

AD-A152 795

SELECTED MEDICAL CARE STATISTICS, FOURTH QUARTER, FY-81. V/1
(U) WASHINGTON HEADQUARTERS SERVICE (DOD) DIR FOR INFO
OP & RPTS. SEP 81. DIOR/L02-81/04

UNCLASSIFIED

F/G 6/5

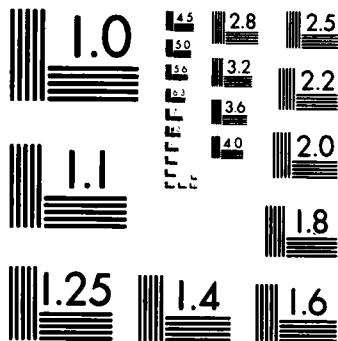
N/L

1 OF 1
AD-A152 795

END
FILMED
11 04 85

1 OF 1

AD-A152 795



MICROCOPY RESOLUTION TEST CHART
NATIONAL BUREAU OF STANDARDS-1963-A

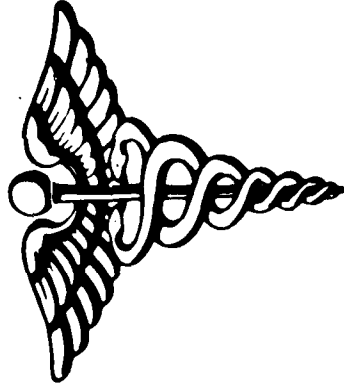
**THIS REPORT IS UNCLASSIFIED AND
ITS DISTRIBUTION IS UNLIMITED**



DEPARTMENT OF DEFENSE

SELECTED MEDICAL CARE STATISTICS

(QUARTER ENDING SEPTEMBER 30, 1981)





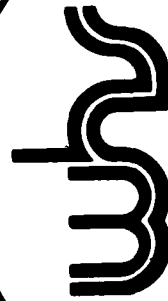
DEPARTMENT OF DEFENSE

SELECTED MEDICAL CARE STATISTICS



OSD

WASHINGTON HEADQUARTERS SERVICES



**DIRECTORATE FOR INFORMATION
OPERATIONS AND REPORTS (DIOR)
THE PENTAGON, WASHINGTON, D.C.**

F O R E W O R D

SELECTED MEDICAL CARE STATISTICS (SMCS) is a quarterly publication prepared by the Washington Headquarters Services, Directorate for Information Operations and Reports (WHS/DIOR) of the Office of the Secretary of Defense.

SMCS presents quarterly summary data concerning medical care provided at fixed military medical facilities located in (1) the United States and (2) outside the United States, in territories, possessions and foreign countries.

This publication is generated from a computerized data base developed and maintained in consonance with Department of Defense Instruction (DoDI) 6015.14, May 19, 1979, under Reports Control Symbol DD-COMP(Q)1474 by the Manpower Management Information Division of WHS/DIOR.

The report is approved for public release. Distribution is unlimited at cost. Requests for additional copies and changes in distribution and addresses should be directed to the Director, Washington Headquarters Services, Room 3E843, The Pentagon, Washington, DC 20301.

C O N T E N T S

<u>Number</u>		<u>Page</u>
Table 1.1	Operating Beds/Operating Bassinets/Beds Occupied - Worldwide	1
Table 1.2	Operating Beds/Operating Bassinets/Beds Occupied - United States	2
Table 1.3	Operating Beds/Operating Bassinets/Beds Occupied - Outside United States	3
Table 2.1	Admissions - Worldwide	4
Table 2.2	Admissions - United States	5
Table 2.3	Admissions - Outside United States	6
Table 3.1	Outpatient Visits and Live Births - Worldwide	7
Table 3.2	Outpatient Visits and Live Births - United States	8
Table 3.3	Outpatient Visits and Live Births - Outside United States	9
	Glossary	10

TABLE 1.1
 DEPARTMENT OF DEFENSE
 SELECTED DATA CONCERNING MEDICAL CARE
 PROVIDED AT FIXED MILITARY FACILITIES
 FOR QUARTER ENDING
 SEPTEMBER 1981

OPERATING BEDS - WORLDWIDE		DOD TOTAL	ARMY FACILITIES	NAVY FACILITIES	AIR FORCE FACILITIES
1.	NUMBER OF OPERATING BEDS	18616	8912	4000	5704
2.	NUMBER OF OPERATING BASSINETS	1984	676	329	979
3.	NUMBER OF BEDS OCCUPIED (DAILY AVERAGE)	14759	7378	3349	4032
4.	BEDS OCCUPIED BY US ACTIVE DUTY UNIFORMED PERSONNEL	5772	3008	1325	1439
	A. MILITARY	5729	2999	1299	1431
	(1) ARMY	2783	2624	43	116
	(2) NAVY-MARINE CORPS	1471	165	1205	101
	(3) AIR FORCE	1475	210	51	1214
	B. OTHER UNIFORMED PERSONNEL (PHS,CG,NOAA)	43	9	26	8
5.	BEDS OCCUPIED BY RETIRED US UNIFORMED PERSONNEL	2323	1058	506	759
	A. RETIRED MILITARY	2304	1050	498	756
	(1) ARMY	954	717	84	153
	(2) NAVY-MARINE CORPS	572	117	341	114
	(3) AIR FORCE	778	216	73	489
	B. OTHER RETIRED UNIFORMED PERSONNEL (PHS,CG,NOAA)	19	8	8	3
6.	BEDS OCCUPIED BY DEPENDENTS OF US ACTIVE DUTY MILITARY PERSONNEL	3756	1801	976	979
	A. ARMY	1583	1434	52	97
	B. NAVY-MARINE CORPS	1080	152	855	73
	C. AIR FORCE	1093	215	69	809
7.	BEDS OCCUPIED BY DEPENDENTS OF RETIRED AND DECEASED US MILITARY PERSONNEL	2101	903	450	748
	A. ARMY	799	582	74	143
	B. NAVY-MARINE CORPS	525	108	310	107
	C. AIR FORCE	777	213	66	498
8.	BEDS OCCUPIED BY DEPENDENTS OF OTHER UNIFORMED PERSONNEL (PHS,CG,NOAA)	57	18	26	13
9.	BEDS OCCUPIED BY ALL OTHER BENEFICIARIES	750	590	66	94

TABLE 1.2
 DEPARTMENT OF DEFENSE
 SELECTED DATA CONCERNING MEDICAL CARE
 PROVIDED AT FIXED MILITARY FACILITIES
 FOR QUARTER ENDING
 SEPTEMBER 1981

	OPERATING BEDS - UNITED STATES	DOD TOTAL	ARMY FACILITIES	NAVY FACILITIES	AIR FORCE FACILITIES
1. NUMBER OF OPERATING BEDS	- TOTAL	15768	7167	3586	5015
2. NUMBER OF OPERATING BASSINETS	- TOTAL	1562	447	283	832
3. NUMBER OF BEDS OCCUPIED (DAILY AVERAGE)	- TOTAL	12673	6119	3008	3546
4. BEDS OCCUPIED BY US ACTIVE DUTY UNIFORMED PERSONNEL	- TOTAL	4647	2316	1166	1165
A. MILITARY	- TOTAL	4605	2307	1141	1157
(1) ARMY		2104	1980	37	87
(2) NAVY-MARINE CORPS		1298	156	1069	73
(3) AIR FORCE		1203	171	35	997
B. OTHER UNIFORMED PERSONNEL (PHS,CG,NOAA)	- TOTAL	42	9	25	8
5. BEDS OCCUPIED BY RETIRED US UNIFORMED PERSONNEL	- TOTAL	2258	1027	495	736
A. RETIRED MILITARY	- TOTAL	2239	1019	487	733
(1) ARMY		922	693	81	148
(2) NAVY-MARINE CORPS		558	116	334	108
(3) AIR FORCE		759	210	72	477
B. OTHER RETIRED UNIFORMED PERSONNEL (PHS,CG,NOAA)	- TOTAL	19	8	8	3
6. BEDS OCCUPIED BY DEPENDENTS OF US ACTIVE DUTY MILITARY PERSONNEL	- TOTAL	3050	1388	835	827
A. ARMY		1196	1080	42	74
B. NAVY-MARINE CORPS		965	146	756	63
C. AIR FORCE		889	162	37	690
7. BEDS OCCUPIED BY DEPENDENTS OF RETIRED AND DECEASED US MILITARY PERSONNEL	- TOTAL	2064	894	439	731
A. ARMY		783	575	70	138
B. NAVY-MARINE CORPS		513	107	304	102
C. AIR FORCE		768	212	65	491
8. BEDS OCCUPIED BY DEPENDENTS OF OTHER UNIFORMED PERSONNEL (PHS,CG,NOAA)	- TOTAL	55	18	24	13
9. BEDS OCCUPIED BY ALL OTHER BENEFICIARIES	- TOTAL	599	476	49	74

TABLE 1.3
DEPARTMENT OF DEFENSE
SELECTED DATA CONCERNING MEDICAL CARE
PROVIDED AT FIXED MILITARY FACILITIES
FOR QUARTER ENDING
SEPTEMBER 1981

OPERATING BEDS - OUTSIDE UNITED STATES	DOD TOTAL	ARMY FACILITIES	NAVY FACILITIES	AIR FORCE FACILITIES
1. NUMBER OF OPERATING BEDS - TOTAL	2848	1745	414	689
2. NUMBER OF OPERATING BASSINETS - TOTAL	422	229	46	147
3. NUMBER OF BEDS OCCUPIED (DAILY AVERAGE) - TOTAL	2086	1259	341	486
4. BEDS OCCUPIED BY US ACTIVE DUTY UNIFORMED PERSONNEL - TOTAL	1125	692	159	274
A. MILITARY	1124	692	158	274
(1) ARMY	679	644	6	29
(2) NAVY-MARINE CORPS	173	9	136	28
(3) AIR FORCE	272	39	16	217
B. OTHER UNIFORMED PERSONNEL (PHS,CG,NOAA) - TOTAL	1	0	1	0
5. BEDS OCCUPIED BY RETIRED US UNIFORMED PERSONNEL - TOTAL	65	31	11	23
A. RETIRED MILITARY	65	31	11	23
(1) ARMY	32	24	3	5
(2) NAVY-MARINE CORPS	14	1	7	6
(3) AIR FORCE	19	6	1	12
B. OTHER RETIRED UNIFORMED PERSONNEL (PHS,CG,NOAA) - TOTAL	0	0	0	0
6. BEDS OCCUPIED BY DEPENDENTS OF US ACTIVE DUTY MILITARY PERSONNEL - TOTAL	706	413	141	152
A. ARMY	387	354	10	23
B. NAVY-MARINE CORPS	115	6	99	10
C. AIR FORCE	204	53	32	119
7. BEDS OCCUPIED BY DEPENDENTS OF RETIRED AND DECEASED US MILITARY PERSONNEL - TOTAL	37	9	11	17
A. ARMY	16	7	4	5
B. NAVY-MARINE CORPS	12	1	6	5
C. AIR FORCE	9	1	1	7
8. BEDS OCCUPIED BY DEPENDENTS OF OTHER UNIFORMED PERSONNEL (PHS,CG,NOAA) - TOTAL	2	0	2	0
9. BEDS OCCUPIED BY ALL OTHER BENEFICIARIES - TOTAL	151	114	17	20

TABLE 2.1
DEPARTMENT OF DEFENSE
SELECTED DATA CONCERNING MEDICAL CARE
PROVIDED AT FIXED MILITARY FACILITIES
FOR QUARTER ENDING
SEPTEMBER 1981

ADMISSIONS - WORLDWIDE		DOD TOTAL	ARMY FACILITIES	NAVY FACILITIES	AIR FORCE FACILITIES
10.	NUMBER OF ADMISSIONS	224720	102287	56476	65957
11.	ADMISSIONS OF US ACTIVE DUTY UNIFORMED PERSONNEL	73110	31079	19067	22964
	A. MILITARY	72583	30996	18759	22828
	(1) ARMY	29210	27376	570	1264
	(2) NAVY-MARINE CORPS	19873	1493	17410	970
	(3) AIR FORCE	23500	2127	779	20594
	B. OTHER UNIFORMED PERSONNEL (PHS, CG, NOAA)	527	83	308	136
12.	ADMISSIONS OF RETIRED US UNIFORMED PERSONNEL	24551	10499	5737	8315
	A. ADMISSIONS OF RETIRED MILITARY	24341	10443	5640	8258
	(1) ARMY	9840	7281	934	1625
	(2) NAVY-MARINE CORPS	6265	1132	3888	1245
	(3) AIR FORCE	8236	2030	818	5388
	B. ADMISSIONS OF OTHER RETIRED UNIFORMED PERSONNEL (PHS, CG, NOAA)	210	56	97	57
13.	ADMISSIONS OF DEPENDENTS OF US ACTIVE DUTY MILITARY PERSONNEL	86001	40499	23411	22091
	A. ARMY	36560	33372	1212	1976
	B. NAVY-MARINE CORPS	25411	3179	20704	1528
	C. AIR FORCE	24030	3948	1495	18587
14.	ADMISSIONS OF DEPENDENTS OF RETIRED AND DECEASED US MILITARY PERSONNEL	28271	11178	6490	10603
	A. ARMY	10323	7382	1075	1866
	B. NAVY-MARINE CORPS	7219	1285	4465	1469
	C. AIR FORCE	10729	2511	950	7268
15.	ADMISSIONS OF DEPENDENTS OF OTHER UNIFORMED MILITARY PERSONNEL	1042	288	520	234
16.	ADMISSIONS OF ALL OTHER BENEFICIARIES	11745	3744	1251	1750

TABLE 2.2
DEPARTMENT OF DEFENSE
SELECTED DATA CONCERNING MEDICAL CARE
PROVIDED AT FIXED MILITARY FACILITIES
FOR QUARTER ENDING
SEPTEMBER 1981

ADMISSIONS - UNITED STATES		DOD TOTAL	ARMY FACILITIES	NAVY FACILITIES	AIR FORCE FACILITIES
10.	NUMBER OF ADMISSIONS	189647	82476	49603	57568
11.	ADMISSIONS OF US ACTIVE DUTY UNIFORMED PERSONNEL	57983	23116	16091	18776
	A. MILITARY	57476	23034	15797	18645
	(1) ARMY	21381	20064	471	846
	(2) NAVY-MARINE CORPS	16952	1389	14876	687
	(3) AIR FORCE	19143	1581	450	17112
	B. OTHER UNIFORMED PERSONNEL (PHS,CG,NOAA)	507	82	294	131
12.	ADMISSIONS OF RETIRED US UNIFORMED PERSONNEL	23925	10257	5557	8111
	A. ADMISSIONS OF RETIRED MILITARY	23719	10201	5461	8057
	(1) ARMY	9553	7082	885	1586
	(2) NAVY-MARINE CORPS	6106	1122	3784	1200
	(3) AIR FORCE	8060	1997	792	5271
	B. ADMISSIONS OF OTHER RETIRED UNIFORMED PERSONNEL (PHS,CG,NOAA)	206	56	96	54
13.	ADMISSIONS OF DEPENDENTS OF US ACTIVE DUTY MILITARY PERSONNEL	59954	30903	20250	18801
	A. ARMY	27437	24933	974	1530
	B. NAVY-MARINE CORPS	22958	3094	18507	1357
	C. AIR FORCE	19559	2876	769	15914
14.	ADMISSIONS OF DEPENDENTS OF RETIRED AND DECEASED US MILITARY PERSONNEL	27713	11012	6272	10429
	A. ARMY	10074	7260	991	1823
	B. NAVY-MARINE CORPS	7063	1275	4361	1427
	C. AIR FORCE	10576	2477	920	7179
15.	ADMISSIONS OF DEPENDENTS OF OTHER UNIFORMED MILITARY PERSONNEL	1006	287	488	231
16.	ADMISSIONS OF ALL OTHER BENEFICIARIES	9066	6901	945	1220

TABLE 2.3
DEPARTMENT OF DEFENSE
SELECTED DATA CONCERNING MEDICAL CARE
PROVIDED AT FIXED MILITARY FACILITIES
FOR QUARTER ENDING
SEPTEMBER 1981

	ADMISSIONS - OUTSIDE UNITED STATES	DOD TOTAL	ARMY FACILITIES	NAVY FACILITIES	AIR FORCE FACILITIES
10. NUMBER OF ADMISSIONS	- TOTAL	35073	19811	6873	8389
11. ADMISSIONS OF US ACTIVE DUTY UNIFORMED PERSONNEL	- TOTAL	15127	7963	2976	4188
A. MILITARY	- TOTAL	15107	7962	2962	4183
(1) ARMY		7829	7312	99	418
(2) NAVY-MARINE CORPS		2921	104	2534	283
(3) AIR FORCE		4357	546	329	3482
B. OTHER UNIFORMED PERSONNEL (PHS,CG,NOAA)	- TOTAL	20	1	14	5
12. ADMISSIONS OF RETIRED US UNIFORMED PERSONNEL	- TOTAL	626	242	180	204
A. ADMISSIONS OF RETIRED MILITARY		622	242	179	201
(1) ARMY		287	199	49	39
(2) NAVY-MARINE CORPS		159	10	104	45
(3) AIR FORCE		176	33	26	117
B. ADMISSIONS OF OTHER RETIRED UNIFORMED PERSONNEL (PHS,CG,NOAA)	- TOTAL	4	0	1	3
13. ADMISSIONS OF DEPENDENTS OF US ACTIVE DUTY MILITARY PERSONNEL	- TOTAL	16047	9596	3161	3290
A. ARMY		9123	8439	238	446
B. NAVY-MARINE CORPS		2453	85	2197	171
C. AIR FORCE		4471	1072	726	2673
14. ADMISSIONS OF DEPENDENTS OF RETIRED AND DECEASED US MILITARY PERSONNEL	- TOTAL	558	166	218	174
A. ARMY		249	122	84	43
B. NAVY-MARINE CORPS		156	10	104	42
C. AIR FORCE		153	34	30	89
15. ADMISSIONS OF DEPENDENTS OF OTHER UNIFORMED MILITARY PERSONNEL	- TOTAL	36	1	32	3
16. ADMISSIONS OF ALL OTHER BENEFICIARIES	- TOTAL	2679	1843	306	530

TABLE 3.1
DEPARTMENT OF DEFENSE
SELECTED DATA CONCERNING MEDICAL CARE
PROVIDED AT FIXED MILITARY FACILITIES
FOR QUARTER ENDING
SEPTEMBER 1981

OUTPATIENT VISITS - WORLDWIDE	DOD TOTAL	ARMY FACILITIES	NAVY FACILITIES	AIR FORCE FACILITIES
17. NUMBER OF OUTPATIENT VISITS	11995113	5153658	3203010	3638445
18. OUTPATIENT VISITS BY US ACTIVE DUTY UNIFORMED PERSONNEL	4922735	2207195	1443754	1271786
A. MILITARY	4904941	2203793	1431837	1269311
(1) ARMY	2166434	2110494	19337	36603
(2) NAVY-MARINE CORPS	1451592	38031	1391784	21777
(3) AIR FORCE	1286915	55268	20716	1210931
B. OTHER UNIFORMED PERSONNEL (PHS,CG,NOAA)	17794	3402	11917	2475
19. OUTPATIENT VISITS BY RETIRED US UNIFORMED PERSONNEL - TOTAL	981620	419238	228588	333794
20. OUTPATIENT VISITS BY DEPENDENTS OF US ACTIVE DUTY UNIFORMED PERSONNEL	3773042	1521173	935380	1316489
A. DEPENDENTS OF MILITARY PERSONNEL	3741550	1513827	919727	1307996
(1) ARMY	1429491	1321246	36171	72074
(2) NAVY-MARINE CORPS	972268	76187	847929	48152
(3) AIR FORCE	1339791	116394	35627	1187770
B. DEPENDENTS OF OTHER UNIFORMED PERSONNEL (PHS,CG,NOAA)	31492	7346	15653	8493
21. OUTPATIENT VISITS BY DEPENDENTS OF RETIRED AND DECEASED US UNIFORMED PERSONNEL	1420485	534671	303749	582065
22. OUTPATIENT VISITS BY ALL OTHER BENEFICIARIES	897231	471381	291539	134311
23. NUMBER OF LIVE BIRTHS	27407	11421	7785	8201

TABLE 3.2
DEPARTMENT OF DEFENSE
SELECTED DATA CONCERNING MEDICAL CARE
PROVIDED AT FIXED MILITARY FACILITIES
FOR QUARTER ENDING
SEPTEMBER 1981

	OUTPATIENT VISITS - UNITED STATES	DOD TOTAL	ARMY FACILITIES	NAVY FACILITIES	AIR FORCE FACILITIES
17. NUMBER OF OUTPATIENT VISITS	- TOTAL	10212261	4145640	2917713	3148908
18. OUTPATIENT VISITS BY US ACTIVE DUTY UNIFORMED PERSONNEL	- TOTAL	3950664	1639371	1284410	1026883
A. MILITARY	- TOTAL	3933901	1635984	1273466	1024451
(1) ARMY		1594663	1558709	14896	21058
(2) NAVY-MARINE CORPS		1296819	35548	1245877	15394
(3) AIR FORCE		1042419	41727	12693	987999
B. OTHER UNIFORMED PERSONNEL (PHS, CG, NOAA)	- TOTAL	16763	3387	10944	2432
19. OUTPATIENT VISITS BY RETIRED US UNIFORMED PERSONNEL	- TOTAL	961080	411109	221939	328032
20. OUTPATIENT VISITS BY DEPENDENTS OF US ACTIVE DUTY UNIFORMED PERSONNEL	- TOTAL	3125675	1180813	845268	1099594
A. DEPENDENTS OF MILITARY PERSONNEL	- TOTAL	3094933	1173480	830128	1091325
(1) ARMY		1090672	1006529	31229	52914
(2) NAVY-MARINE CORPS		889561	73424	773060	43077
(3) AIR FORCE		1114700	93527	25839	995334
B. DEPENDENTS OF OTHER UNIFORMED PERSONNEL (PHS, CG, NOAA)	- TOTAL	30742	7333	15140	8269
21. OUTPATIENT VISITS BY DEPENDENTS OF RETIRED AND DECEASED US UNIFORMED PERSONNEL	- TOTAL	1400576	529004	296222	575350
22. OUTPATIENT VISITS BY ALL OTHER BENEFICIARIES	- TOTAL	774266	385343	269874	119049
23. NUMBER OF LIVE BIRTHS	- TOTAL	22331	8537	6756	7038

TABLE 3.3
DEPARTMENT OF DEFENSE
SELECTED DATA CONCERNING MEDICAL CARE
PROVIDED AT FIXED MILITARY FACILITIES
FOR QUARTER ENDING
SEPTEMBER 1981

-----		-----		-----		-----		-----		
OUTPATIENT VISITS - OUTSIDE UNITED STATES		DOD	ARMY	NAVY	AIR FORCE					
		TOTAL	FACILITIES	FACILITIES	FACILITIES					
17.	NUMBER OF OUTPATIENT VISITS	- TOTAL	1782852	1008018	285297	489537				
18.	OUTPATIENT VISITS BY US ACTIVE DUTY UNIFORMED PERSONNEL	- TOTAL	972071	567824	159344	244903				
A.	MILITARY	- TOTAL	971040	567809	158371	244860				
	(1) ARMY		571771	551785	4441	15545				
	(2) NAVY-MARINE CORPS		154773	2483	145907	6383				
	(3) AIR FORCE		244496	13541	8023	222932				
B.	OTHER UNIFORMED PERSONNEL (PHS, CG, NOAA)	- TOTAL	1031	15	973	43				
19.	OUTPATIENT VISITS BY RETIRED US UNIFORMED PERSONNEL	- TOTAL	20540	8129	6649	5762				
20.	OUTPATIENT VISITS BY DEPENDENTS OF US ACTIVE DUTY UNIFORMED PERSONNEL	- TOTAL	647367	340360	90112	216895				
A.	DEPENDENTS OF MILITARY PERSONNEL	- TOTAL	646617	340347	89599	216671				
	(1) ARMY		338819	314717	4942	19160				
	(2) NAVY-MARINE CORPS		82707	2763	74869	5075				
	(3) AIR FORCE		225091	22867	9788	192436				
B.	DEPENDENTS OF OTHER UNIFORMED PERSONNEL (PHS, CG, NOAA)	- TOTAL	750	13	513	224				
21.	OUTPATIENT VISITS BY DEPENDENTS OF RETIRED AND DECEASED US UNIFORMED PERSONNEL	- TOTAL	19909	5667	7527	6715				
22.	OUTPATIENT VISITS BY ALL OTHER BENEFICIARIES	- TOTAL	122965	86038	21665	15262				
23.	NUMBER OF LIVE BIRTHS	- TOTAL	5076	2884	1029	1163				

G L O S S A R Y

Operating Bed. A bed that is currently set up and ready in all respects for the care of a patient. It must include supporting space, equipment and staff to operate under normal circumstances. Excluded, are nursery bassinets and transient patients' beds.

Occupied Bed. A bed assigned as of midnight to a patient, to include a patient on pass or liberty not in excess of 72 hours, and any bassinet assigned to a newborn infant whose mother has been discharged from the hospital. The definition excludes: any bed assigned to a patient subsisting out, on leave, or absent without leave, and any bed occupied by a transient patient.

Operating Bassinet. A bed designed for the care of an infant that is currently set up in the newborn nursery and ready in all respects for use. It must include support space, equipment and staff to operate under normal circumstances. Excluded are infant transporters.

Admission. An admission is the act of placing an individual under treatment or observation in a medical center or a hospital. The day of admission is the day on which the medical center or hospital makes a formal acceptance of the patient who is to be provided with room, board, and continuous nursing service in an area of the hospital where patients normally stay at least overnight. If both an admission and discharge occur on the same day, then that day is considered as a day of admission and shall be counted as one occupied bed day. The admission of a newborn is deemed to occur at the time of birth.

Outpatient Visits. Visits made to each dispensary or separate, organized clinic of a fixed medical treatment facility for medical advice, examination, diagnosis, treatment, evaluation, consultation, or counseling including visits by military patients who are excused from duty for medical reasons but who have not been admitted for inpatient care in a facility authorized beds for inpatient care and any visits made incident to complete or flight physicals.

Live Births. A live birth is the complete expulsion or extraction from its mother of a product of conception, irrespective of the duration of pregnancy which after such separation, breathes or shows any other evidence of life such as beating of the heart, pulsation of the umbilical cord, or definite movement of voluntary muscles, whether or not the umbilical cord has been cut or the placenta is attached; each such product of such a birth is considered liveborn.

D