

AD-A152 796

SELECTED MEDICAL CARE STATISTICS, THIRD QUARTER, FY-81. 1/1
(U) WASHINGTON HEADQUARTERS SERVICE (DOD) DIR FOR INFO
OP & RPTS. JUN 81. DIOR/L02-81/03

UNCLASSIFIED

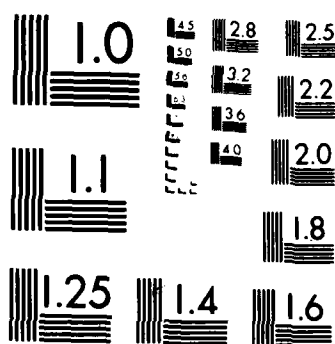
F/G 6/5 N/L

1 OF 1
AD A152 796

END
FILMED
11 04 85

1 OF 1

AD-A152 796



MICROCOPY RESOLUTION TEST CHART
NATIONAL BUREAU OF STANDARDS 1963 A

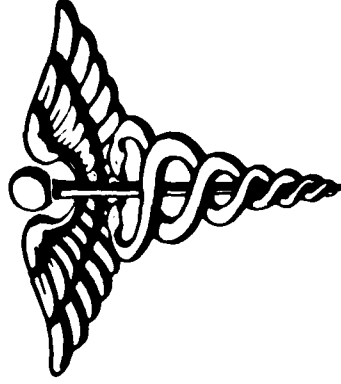
**THIS REPORT IS UNCLASSIFIED AND
ITS DISTRIBUTION IS UNLIMITED**



DEPARTMENT OF DEFENSE

SELECTED MEDICAL CARE STATISTICS

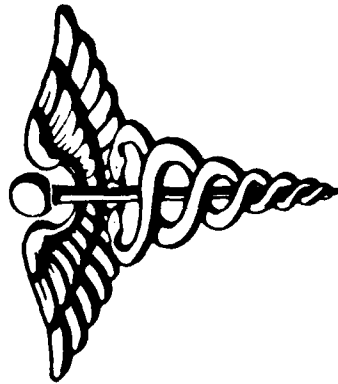
(QUARTER ENDING JUNE 30, 1981)



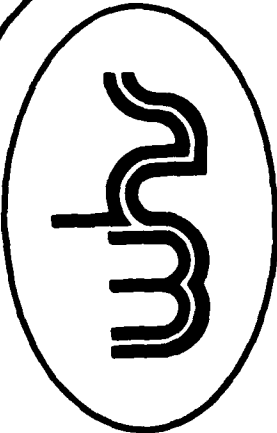


DEPARTMENT OF DEFENSE

SELECTED MEDICAL CARE STATISTICS



OSD WASHINGTON HEADQUARTERS SERVICES



**DIRECTORATE FOR INFORMATION
OPERATIONS AND REPORTS (DIOR)
THE PENTAGON, WASHINGTON, D.C.**

F O R E W O R D

SELECTED MEDICAL CARE STATISTICS (SMCS) is a quarterly publication prepared by the Washington Headquarters Services, Directorate for Information Operations and Reports (WHS/DIOR) of the Office of the Secretary of Defense.

SMCS presents quarterly summary data concerning medical care provided at fixed military medical facilities located in (1) the United States and (2) outside the United States, in territories, possessions and foreign countries.

This publication is generated from a computerized data base developed and maintained in consonance with Department of Defense Instruction (DoDI) 6015.14, May 19, 1979, under Reports Control Symbol DD-COMP(Q)1474 by the Manpower Management Information Division of WHS/DIOR.

The report is approved for public release. Distribution is unlimited at cost. Requests for additional copies and changes in distribution and addresses should be directed to the Director, Washington Headquarters Services, Room 3E843, The Pentagon, Washington, DC 20301.

C O N T E N T S

<u>Number</u>		<u>Page</u>
Table 1.1	Operating Beds/Operating Bassinets/Beds Occupied - Worldwide	1
Table 1.2	Operating Beds/Operating Bassinets/Beds Occupied - United States	2
Table 1.3	Operating Beds/Operating Bassinets/Beds Occupied - Outside United States	3
Table 2.1	Admissions - Worldwide	4
Table 2.2	Admissions - United States	5
Table 2.3	Admissions - Outside United States	6
Table 3.1	Outpatient Visits and Live Births - Worldwide	7
Table 3.2	Outpatient Visits and Live Births - United States	8
Table 3.3	Outpatient Visits and Live Births - Outside United States	9
	Glossary	10

TABLE 1.1
DEPARTMENT OF DEFENSE
SELECTED DATA CONCERNING MEDICAL CARE
PROVIDED AT FIXED MILITARY FACILITIES
FOR QUARTER ENDING
JUNE 1981

OPERATING BEDS - WORLDWIDE		DOD TOTAL	ARMY FACILITIES	NAVY FACILITIES	AIR FORCE FACILITIES
1.	NUMBER OF OPERATING BEDS	18665	8912	4005	5748
2.	NUMBER OF OPERATING BASSINETS	1975	676	310	989
3.	NUMBER OF BEDS OCCUPIED (DAILY AVERAGE)	14652	7201	3362	4089
4.	BEDS OCCUPIED BY US ACTIVE DUTY UNIFORMED PERSONNEL - TOTAL	5851	3067	1305	1479
A.	MILITARY	5816	3058	1284	1474
(1)	ARMY	2822	2654	42	126
(2)	NAVY-MARINE CORPS	1467	175	1191	101
(3)	AIR FORCE	1527	229	51	1247
B.	OTHER UNIFORMED PERSONNEL (PHS,CG,NOAA) - TOTAL	35	9	21	5
5.	BEDS OCCUPIED BY RETIRED US UNIFORMED PERSONNEL - TOTAL	2350	1039	551	760
A.	RETIRED MILITARY	2329	1034	539	756
(1)	ARMY	929	699	87	143
(2)	NAVY-MARINE CORPS	614	123	373	118
(3)	AIR FORCE	786	212	79	495
B.	OTHER RETIRED UNIFORMED PERSONNEL (PHS,CG,NOAA) - TOTAL	21	5	12	4
6.	BEDS OCCUPIED BY DEPENDENTS OF US ACTIVE DUTY MILITARY PERSONNEL - TOTAL	3610	1677	942	991
A.	ARMY	1492	1349	50	93
B.	NAVY-MARINE CORPS	1019	125	819	75
C.	AIR FORCE	1099	203	73	823
7.	BEDS OCCUPIED BY DEPENDENTS OF RETIRED AND DECEASED US MILITARY PERSONNEL - TOTAL	2124	883	473	768
A.	ARMY	792	569	75	148
B.	NAVY-MARINE CORPS	553	111	230	112
C.	AIR FORCE	779	203	38	508
8.	BEDS OCCUPIED BY DEPENDENTS OF OTHER UNIFORMED PERSONNEL (PHS,CG,NOAA) - TOTAL	60	18	27	15
9.	BEDS OCCUPIED BY ALL OTHER BENEFICIARIES - TOTAL	657	517	64	76

TABLE 1.2
DEPARTMENT OF DEFENSE
SELECTED DATA CONCERNING MEDICAL CARE
PROVIDED AT FIXED MILITARY FACILITIES
FOR QUARTER ENDING
JUNE 1981

	OPERATING BEDS - UNITED STATES	DOD TOTAL	ARMY FACILITIES	NAVY FACILITIES	AIR FORCE FACILITIES
1.	NUMBER OF OPERATING BEDS - TOTAL	15808	7167	3586	5055
2.	NUMBER OF OPERATING BASSINETS - TOTAL	1558	447	264	847
3.	NUMBER OF BEDS OCCUPIED (DAILY AVERAGE) - TOTAL	12584	5957	3003	3624
4.	BEDS OCCUPIED BY US ACTIVE DUTY UNIFORMED PERSONNEL - TOTAL	4760	2385	1148	1227
	A. MILITARY	4726	2376	1128	1222
	(1) ARMY	2151	2023	38	90
	(2) NAVY-MARINE CORPS	1298	165	1055	78
	(3) AIR FORCE	1277	188	35	1054
	B. OTHER UNIFORMED PERSONNEL (PHS,CG,NOAA) - TOTAL	34	9	20	5
	BEDS OCCUPIED BY RETIRED US UNIFORMED PERSONNEL - TOTAL	2283	1008	537	738
	A. RETIRED MILITARY	2262	1003	525	734
	(1) ARMY	899	676	85	138
	(2) NAVY-MARINE CORPS	596	122	362	112
	(3) AIR FORCE	767	205	78	484
	B. OTHER RETIRED UNIFORMED PERSONNEL (PHS,CG,NOAA) - TOTAL	21	5	12	4
6.	BEDS OCCUPIED BY DEPENDENTS OF US ACTIVE DUTY MILITARY PERSONNEL - TOTAL	2898	1274	791	833
	A. ARMY	1119	1007	40	72
	B. NAVY-MARINE CORPS	900	118	715	67
	C. AIR FORCE	879	149	36	694
7.	BEDS OCCUPIED BY DEPENDENTS OF RETIRED AND DECEASED US MILITARY PERSONNEL - TOTAL	2083	868	461	754
	A. ARMY	772	557	70	145
	B. NAVY-MARINE CORPS	542	110	324	108
	C. AIR FORCE	769	201	67	501
8.	BEDS OCCUPIED BY DEPENDENTS OF OTHER UNIFORMED PERSONNEL (PHS,CG,NOAA) - TOTAL	58	18	25	15
9.	BEDS OCCUPIED BY ALL OTHER BENEFICIARIES - TOTAL	502	404	41	57

TABLE 1.3
DEPARTMENT OF DEFENSE
SELECTED DATA CONCERNING MEDICAL CARE
PROVIDED AT FIXED MILITARY FACILITIES
FOR QUARTER ENDING
JUNE 1981

OPERATING BEDS - OUTSIDE UNITED STATES	DOD TOTAL	ARMY FACILITIES	NAVY FACILITIES	AIR FORCE FACILITIES
1. NUMBER OF OPERATING BEDS - TOTAL	2857	1745	419	693
2. NUMBER OF OPERATING BASSINETS - TOTAL	417	229	46	142
3. NUMBER OF BEDS OCCUPIED (DAILY AVERAGE) - TOTAL	2068	1244	359	465
4. BEDS OCCUPIED BY US ACTIVE DUTY UNIFORMED PERSONNEL - TOTAL	1091	682	157	252
A. MILITARY - TOTAL	1090	682	156	252
(1) ARMY	671	631	4	36
(2) NAVY-MARINE CORPS	169	10	136	23
(3) AIR FORCE	250	41	16	193
B. OTHER UNIFORMED PERSONNEL (PHS,CG,NOAA) - TOTAL	1	0	1	0
5. BEDS OCCUPIED BY RETIRED US UNIFORMED PERSONNEL - TOTAL	67	31	14	22
A. RETIRED MILITARY - TOTAL	67	31	14	22
(1) ARMY	30	23	2	5
(2) NAVY-MARINE CORPS	18	1	11	6
(3) AIR FORCE	19	7	1	11
B. OTHER RETIRED UNIFORMED PERSONNEL (PHS,CG,NOAA) - TOTAL	0	0	0	0
6. BEDS OCCUPIED BY DEPENDENTS OF US ACTIVE DUTY MILITARY PERSONNEL - TOTAL	712	403	151	158
A. ARMY	373	342	10	21
B. NAVY-MARINE CORPS	119	7	104	8
C. AIR FORCE	220	54	37	129
7. BEDS OCCUPIED BY DEPENDENTS OF RETIRED AND DECEASED US MILITARY PERSONNEL - TOTAL	41	15	12	14
A. ARMY	20	12	5	3
B. NAVY-MARINE CORPS	11	1	6	4
C. AIR FORCE	10	2	1	7
8. BEDS OCCUPIED BY DEPENDENTS OF OTHER UNIFORMED PERSONNEL (PHS,CG,NOAA) - TOTAL	2	0	2	0
9. BEDS OCCUPIED BY ALL OTHER BENEFICIARIES - TOTAL	155	113	23	19

TABLE 2.1
DEPARTMENT OF DEFENSE
SELECTED DATA CONCERNING MEDICAL CARE
PROVIDED AT FIXED MILITARY FACILITIES
FOR QUARTER ENDING
JUNE 1981

ADMISSIONS - WORLDWIDE	DOD TOTAL	ARMY FACILITIES	NAVY FACILITIES	AIR FORCE FACILITIES
10. NUMBER OF ADMISSIONS	218422	97250	55823	65349
11. ADMISSIONS OF US ACTIVE DUTY UNIFORMED PERSONNEL	72158	31070	18880	22208
A. MILITARY	71707	30987	18604	22116
(1) ARMY	29260	27357	573	1330
(2) NAVY-MARINE CORPS	19662	1494	17241	927
(3) AIR FORCE	22785	2136	790	19859
B. OTHER UNIFORMED PERSONNEL (PHS,CG,NOAA)	451	83	276	92
12. ADMISSIONS OF RETIRED US UNIFORMED PERSONNEL	24956	10485	6063	8408
A. ADMISSIONS OF RETIRED MILITARY	24753	10436	5956	8361
(1) ARMY	9841	7282	953	1606
(2) NAVY-MARINE CORPS	6472	1097	4138	1237
(3) AIR FORCE	8440	2057	865	5518
B. ADMISSIONS OF OTHER RETIRED UNIFORMED PERSONNEL (PHS,CG,NOAA)	203	49	107	47
13. ADMISSIONS OF DEPENDENTS OF US ACTIVE DUTY MILITARY PERSONNEL	81485	36850	22410	22225
A. ARMY	33243	30273	1075	1895
B. NAVY-MARINE CORPS	23989	2681	19737	1571
C. AIR FORCE	24253	3896	1598	18759
14. ADMISSIONS OF DEPENDENTS OF RETIRED AND DECEASED US MILITARY PERSONNEL	28433	10900	6770	10763
A. ARMY	10197	7184	1033	1980
B. NAVY-MARINE CORPS	7540	1281	4739	1520
C. AIR FORCE	10696	2435	998	7263
15. ADMISSIONS OF DEPENDENTS OF OTHER UNIFORMED MILITARY PERSONNEL	1043	328	477	238
16. ADMISSIONS OF ALL OTHER BENEFICIARIES	10347	7617	1223	1507

TABLE 2.2
DEPARTMENT OF DEFENSE
SELECTED DATA CONCERNING MEDICAL CARE
PROVIDED AT FIXED MILITARY FACILITIES
FOR QUARTER ENDING
JUNE 1981

ADMISSIONS - UNITED STATES		DOD	ARMY	NAVY	AIR FORCE
		TOTAL	FACILITIES	FACILITIES	FACILITIES
10.	NUMBER OF ADMISSIONS	184444	78375	48702	57367
11.	ADMISSIONS OF US ACTIVE DUTY UNIFORMED PERSONNEL	57526	23261	15878	18387
	A. MILITARY	57104	23178	15627	18299
	(1) ARMY	21562	20196	495	871
	(2) NAVY-MARINE CORPS	16727	1401	14667	659
	(3) AIR FORCE	18815	1581	465	16769
	B. OTHER UNIFORMED PERSONNEL (PHS,CG,NOAA)	422	83	251	88
12.	ADMISSIONS OF RETIRED US UNIFORMED PERSONNEL	24303	10208	5897	8198
	A. ADMISSIONS OF RETIRED MILITARY	24103	10159	5792	8152
	(1) ARMY	9550	7072	913	1565
	(2) NAVY-MARINE CORPS	6301	1078	4030	1193
	(3) AIR FORCE	8252	2009	849	5394
	B. ADMISSIONS OF OTHER RETIRED UNIFORMED PERSONNEL (PHS,CG,NOAA)	200	49	105	46
13.	ADMISSIONS OF DEPENDENTS OF US ACTIVE DUTY MILITARY PERSONNEL	65981	27967	19079	18935
	A. ARMY	24962	22645	824	1493
	B. NAVY-MARINE CORPS	21468	2563	17484	1421
	C. AIR FORCE	19551	2759	771	16021
14.	ADMISSIONS OF DEPENDENTS OF RETIRED AND DECEASED US MILITARY PERSONNEL	27837	10708	6557	10572
	A. ARMY	9931	7040	952	1939
	B. NAVY-MARINE CORPS	7368	1266	4625	1477
	C. AIR FORCE	10538	2402	980	7156
15.	ADMISSIONS OF DEPENDENTS OF OTHER UNIFORMED MILITARY PERSONNEL	1005	327	442	236
16.	ADMISSIONS OF ALL OTHER BENEFICIARIES	7792	5904	849	1039

TABLE 2.3
 DEPARTMENT OF DEFENSE
 SELECTED DATA CONCERNING MEDICAL CARE
 PROVIDED AT FIXED MILITARY FACILITIES
 FOR QUARTER ENDING
 JUNE 1981

	ADMISSIONS - OUTSIDE UNITED STATES	DOD TOTAL	ARMY FACILITIES	NAVY FACILITIES	AIR FORCE FACILITIES
10.	NUMBER OF ADMISSIONS	33978	18875	7121	7982
11.	ADMISSIONS OF US ACTIVE DUTY UNIFORMED PERSONNEL	14632	7809	3002	3821
	A. MILITARY	14603	7809	2977	3817
	(1) ARMY	7698	7161	78	459
	(2) NAVY-MARINE CORPS	2935	93	2574	268
	(3) AIR FORCE	3970	555	325	3090
	B. OTHER UNIFORMED PERSONNEL (PHS,CG,NOAA)	29	0	25	4
12.	ADMISSIONS OF RETIRED US UNIFORMED PERSONNEL	653	277	166	210
	A. ADMISSIONS OF RETIRED MILITARY	650	277	164	209
	(1) ARMY	291	210	40	41
	(2) NAVY-MARINE CORPS	171	19	108	44
	(3) AIR FORCE	188	48	16	124
	B. ADMISSIONS OF OTHER RETIRED UNIFORMED PERSONNEL (PHS,CG,NOAA)	3	0	2	1
13.	ADMISSIONS OF DEPENDENTS OF US ACTIVE DUTY MILITARY PERSONNEL	15504	8883	3331	3290
	A. ARMY	8281	7628	251	402
	B. NAVY-MARINE CORPS	2521	118	2253	150
	C. AIR FORCE	4702	1137	827	2738
14.	ADMISSIONS OF DEPENDENTS OF RETIRED AND DECEASED US MILITARY PERSONNEL	596	192	213	191
	A. ARMY	266	144	81	41
	B. NAVY-MARINE CORPS	172	15	114	43
	C. AIR FORCE	158	33	18	107
15.	ADMISSIONS OF DEPENDENTS OF OTHER UNIFORMED MILITARY PERSONNEL	38	1	35	2
16.	ADMISSIONS OF ALL OTHER BENEFICIARIES	2555	1713	374	468

TABLE 3.1
DEPARTMENT OF DEFENSE
SELECTED DATA CONCERNING MEDICAL CARE
PROVIDED AT FIXED MILITARY FACILITIES
FOR QUARTER ENDING
JUNE 1981

-----		-----		-----		-----		-----		
OUTPATIENT VISITS - WORLDWIDE		DOD	ARMY	NAVY	AIR FORCE					
		TOTAL	FACILITIES	FACILITIES	FACILITIES					
17.	NUMBER OF OUTPATIENT VISITS	- TOTAL	12086595	5252908	3120176	3713511				
18.	OUTPATIENT VISITS BY US ACTIVE DUTY UNIFORMED PERSONNEL	- TOTAL	4874042	2265152	1320506	1288384				
A.	MILITARY	- TOTAL	4856432	2261543	1308932	1285957				
	(1) ARMY		2219592	2163826	18705	37061				
	(2) NAVY-MARINE CORPS		1331044	38486	1270601	21957				
	(3) AIR FORCE		1305796	59231	19626	1226939				
B.	OTHER UNIFORMED PERSONNEL (PHS,CG,NOAA)	- TOTAL	17610	3609	11574	2427				
19.	OUTPATIENT VISITS BY RETIRED US UNIFORMED PERSONNEL	- TOTAL	994465	415284	235363	343818				
20.	OUTPATIENT VISITS BY DEPENDENTS OF US ACTIVE DUTY UNIFORMED PERSONNEL	- TOTAL	3858840	1530961	964558	1363321				
A.	DEPENDENTS OF MILITARY PERSONNEL	- TOTAL	3828062	1523168	949077	1355817				
	(1) ARMY		1433292	1326329	35609	71354				
	(2) NAVY-MARINE CORPS		1001318	76033	877743	47542				
	(3) AIR FORCE		1393452	120806	35725	1236921				
B.	DEPENDENTS OF OTHER UNIFORMED PERSONNEL (PHS,CG,NOAA)	- TOTAL	30778	7793	15481	7504				
21.	OUTPATIENT VISITS BY DEPENDENTS OF RETIRED AND DECEASED US UNIFORMED PERSONNEL	- TOTAL	1457106	547890	316118	593098				
22.	OUTPATIENT VISITS BY ALL OTHER BENEFICIARIES	- TOTAL	902142	493621	283631	124890				
23.	NUMBER OF LIVE BIRTHS	- TOTAL	24038	9673	6984	7381				

TABLE 3.2
 DEPARTMENT OF DEFENSE
 SELECTED DATA CONCERNING MEDICAL CARE
 PROVIDED AT FIXED MILITARY FACILITIES
 FOR QUARTER ENDING
 JUNE 1981

	OUTPATIENT VISITS - UNITED STATES	DOD TOTAL	ARMY FACILITIES	NAVY FACILITIES	AIR FORCE FACILITIES
17. NUMBER OF OUTPATIENT VISITS	- TOTAL	10256460	4215683	2831257	3209520
18. OUTPATIENT VISITS BY US ACTIVE DUTY UNIFORMED PERSONNEL	- TOTAL	3873204	1667826	1163234	1042144
A. MILITARY	- TOTAL	3856748	1664235	1152709	1039804
(1) ARMY		1618545	1583389	14663	20493
(2) NAVY-MARINE CORPS		1177761	36187	1125886	15688
(3) AIR FORCE		1060442	44659	12160	1003623
B. OTHER UNIFORMED PERSONNEL (PHS,CG,NOAA)	- TOTAL	16456	3591	10525	2340
19. OUTPATIENT VISITS BY RETIRED US UNIFORMED PERSONNEL	- TOTAL	973576	406847	229033	337696
20. OUTPATIENT VISITS BY DEPENDENTS OF US ACTIVE DUTY UNIFORMED PERSONNEL	- TOTAL	3197052	1191815	871794	1133443
A. DEPENDENTS OF MILITARY PERSONNEL	- TOTAL	3167152	1184035	856991	1126126
(1) ARMY		1098377	1015486	30323	52568
(2) NAVY-MARINE CORPS		917179	73077	801188	42914
(3) AIR FORCE		1151596	95472	25480	1030644
B. DEPENDENTS OF OTHER UNIFORMED PERSONNEL (PHS,CG,NOAA)	- TOTAL	29900	7780	14803	7317
21. OUTPATIENT VISITS BY DEPENDENTS OF RETIRED AND DECEASED US UNIFORMED PERSONNEL	- TOTAL	1436763	541629	308742	586392
22. OUTPATIENT VISITS BY ALL OTHER BENEFICIARIES	- TOTAL	775865	407566	258454	109845
23. NUMBER OF LIVE BIRTHS	- TOTAL	19492	7246	5928	6318

TABLE 3.3
 DEPARTMENT OF DEFENSE
 SELECTED DATA CONCERNING MEDICAL CARE
 PROVIDED AT FIXED MILITARY FACILITIES
 FOR QUARTER ENDING
 JUNE 1951

		DOD TOTAL	ARMY FACILITIES	NAVY FACILITIES	AIR FORCE FACILITIES
17.	OUTPATIENT VISITS - OUTSIDE UNITED STATES NUMBER OF OUTPATIENT VISITS	1830135	1037225	288919	503991
18.	OUTPATIENT VISITS BY US ACTIVE DUTY UNIFORMED PERSONNEL	1000838	597326	157272	246240
A.	MILITARY	999684	597308	156223	246153
(1)	ARMY	601047	580437	4042	16568
(2)	NAVY-MARINE CORPS	153283	2299	144715	6269
(3)	AIR FORCE	245354	14572	7466	223316
B.	OTHER UNIFORMED PERSONNEL (PHS,CG,NOAA)	1154	18	1049	87
19.	OUTPATIENT VISITS BY RETIRED US UNIFORMED PERSONNEL	20889	8437	6330	6122
20.	OUTPATIENT VISITS BY DEPENDENTS OF US ACTIVE DUTY UNIFORMED PERSONNEL	661788	339146	92764	229878
A.	DEPENDENTS OF MILITARY PERSONNEL	660910	339133	92086	229691
(1)	ARMY	334915	310843	5286	18786
(2)	NAVY-MARINE CORPS	84139	2956	76555	4628
(3)	AIR FORCE	241856	25334	10245	206277
B.	DEPENDENTS OF OTHER UNIFORMED PERSONNEL (PHS,CG,NOAA)	878	13	678	187
21.	OUTPATIENT VISITS BY DEPENDENTS OF RETIRED AND DECEASED US UNIFORMED PERSONNEL	20343	6261	7376	6706
22.	OUTPATIENT VISITS BY ALL OTHER BENEFICIARIES	126277	86055	25177	15045
23.	NUMBER OF LIVE BIRTHS	4546	2427	1056	1063

G L O S S A R Y

Operating Bed. A bed that is currently set up and ready in all respects for the care of a patient. It must include supporting space, equipment and staff to operate under normal circumstances. Excluded, are nursery bassinets and transient patients' beds.

Occupied Bed. A bed assigned as of midnight to a patient, to include a patient on pass or liberty not in excess of 72 hours, and any bassinet assigned to a newborn infant whose mother has been discharged from the hospital. The definition excludes: any bed assigned to a patient subsisting out, on leave, or absent without leave, and any bed occupied by a transient patient.

Operating Bassinet. A bed designed for the care of an infant that is currently set up in the newborn nursery and ready in all respects for use. It must include support space, equipment and staff to operate under normal circumstances. Excluded are infant transporters.

Admission. An admission is the act of placing an individual under treatment or observation in a medical center or a hospital. The day of admission is the day on which the medical center or hospital makes a formal acceptance of the patient who is to be provided with room, board, and continuous nursing service in an area of the hospital where patients normally stay at least overnight. If both an admission and discharge occur on the same day, then that day is considered as a day of admission and shall be counted as one occupied bed day. The admission of a newborn is deemed to occur at the time of birth.

Outpatient Visits. Visits made to each dispensary or separate, organized clinic of a fixed medical treatment facility for medical advice, examination, diagnosis, treatment, evaluation, consultation, or counseling including visits by military patients who are excused from duty for medical reasons but who have not been admitted for inpatient care in a facility authorized beds for inpatient care and any visits made incident to complete or flight physicals.

Live Births. A live birth is the complete expulsion or extraction from its mother of a product of conception, irrespective of the duration of pregnancy which after such separation, breathes or shows any other evidence of life such as beating of the heart, pulsation of the umbilical cord, or definite movement of voluntary muscles, whether or not the umbilical cord has been cut or the placenta is attached; each such product of such a birth is considered liveborn.

IND