

AD-A152 797

SELECTED MEDICAL CARE STATISTICS, SECOND QUARTER, FY-81.
(U) WASHINGTON HEADQUARTERS SERVICE (DOD) DIR FOR INFO
OP & RPTS. MAR 81. DIOR/L02-81/02

V/I

UNCLASSIFIED

F/G 6/5 N/L

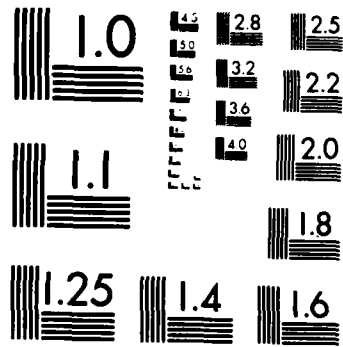
1 OF 1
AD-A152 797



END
FILMED
11 04 85

1 OF 1

AD-A152 797



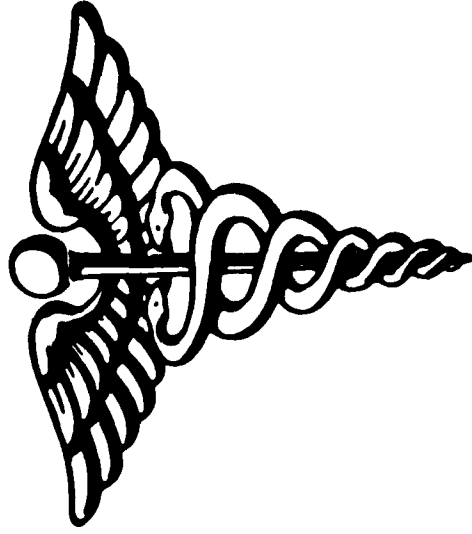
MICROCOPY RESOLUTION TEST CHART
NATIONAL BUREAU OF STANDARDS-1963-A

**THIS REPORT IS UNCLASSIFIED AND
ITS DISTRIBUTION IS UNLIMITED**

DEPARTMENT OF DEFENSE

SELECTED MEDICAL CARE STATISTICS

(QUARTER ENDING MARCH 31, 1981)



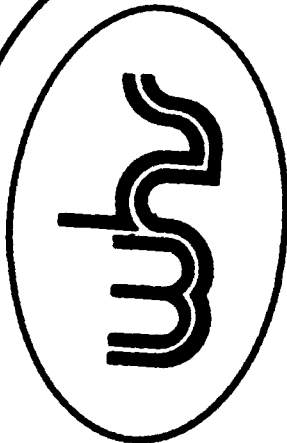
OSD

UNCLASSIFIED//FOR OFFICIAL USE ONLY



DEPARTMENT OF DEFENSE

SELECTED MEDICAL CARE STATISTICS



**DIRECTORATE FOR INFORMATION
OPERATIONS AND REPORTS (DIOR)
THE PENTAGON, WASHINGTON, D.C.**

OSD WASHINGTON FIELD OFFICES

F O R E W O R D

SELECTED MEDICAL CARE STATISTICS (SMCS) is a quarterly publication prepared by the Washington Headquarters Services, Directorate for Information Operations and Reports (WHS/DIOR) of the Office of the Secretary of Defense.

SMCS presents quarterly summary data concerning medical care provided at fixed military medical facilities located in (1) the United States and (2) outside the United States, in territories, possessions and foreign countries.

This publication is generated from a computerized data base developed and maintained in consonance with Department of Defense Instruction (DoDI) 6015.14, May 19, 1979, under Reports Control Symbol DD-COMP(Q)1474 by the Manpower Management Information Division of WHS/DIOR.

The report is approved for public release. Distribution is unlimited at cost. Requests for additional copies and changes in distribution and addresses should be directed to the Director, Washington Headquarters Services, Room 3E843, The Pentagon, Washington, DC 20301.

L I S T O F T A B L E S

Number

- Table 1.1 Operating Beds/Operating Bassinets/Beds Occupied - Worldwide
- Table 1.2 Operating Beds/Operating Bassinets/Beds Occupied - United States
- Table 1.3 Operating Beds/Operating Bassinets/Beds Occupied - Outside United States
-
- Table 2.1 Admissions - Worldwide
- Table 2.2 Admissions - United States
- Table 2.3 Admissions - Outside United States
-
- Table 3.1 Outpatient Visits and Live Births - Worldwide
- Table 3.2 Outpatient Visits and Live Births - United States
- Table 3.3 Outpatient Visits and Live Births - Outside United States

Glossary

TABLE 1.1
DEPARTMENT OF DEFENSE
SELECTED DATA CONCERNING MEDICAL CARE
PROVIDED AT FIXED MILITARY FACILITIES
FOR QUARTER ENDING
MARCH 1981

OPERATING BEDS - WORLDWIDE		DOD TOTAL	ARMY FACILITIES	NAVY FACILITIES	AIR FORCE FACILITIES
1.	NUMBER OF OPERATING BEDS - TOTAL	18811	8912	4172	5727
2.	NUMBER OF OPERATING BASSINETS - TOTAL	1973	676	311	986
3.	NUMBER OF BEDS OCCUPIED (DAILY AVERAGE) - TOTAL	15382	7627	3372	4383
4.	BEDS OCCUPIED BY US ACTIVE DUTY UNIFORMED PERSONNEL - TOTAL	6243	3290	1345	1608
	A. MILITARY - TOTAL	6212	3282	1329	1601
	(1) ARMY	3055	2874	51	130
	(2) NAVY-MARINE CORPS	1530	181	1227	122
	(3) AIR FORCE	1627	227	51	1349
	B. OTHER UNIFORMED PERSONNEL (PHS,CG,NOAA) - TOTAL	31	8	16	7
5.	BEDS OCCUPIED BY RETIRED US UNIFORMED PERSONNEL - TOTAL	2420	1083	539	798
	A. RETIRED MILITARY - TOTAL	2399	1078	527	794
	(1) ARMY	1001	759	82	160
	(2) NAVY-MARINE CORPS	606	121	365	120
	(3) AIR FORCE	792	198	80	514
	B. OTHER RETIRED UNIFORMED PERSONNEL (PHS,CG,NOAA) - TOTAL	21	5	12	4
6.	BEDS OCCUPIED BY DEPENDENTS OF US ACTIVE DUTY MILITARY PERSONNEL - TOTAL	3749	1771	923	1055
	A. ARMY	1576	1430	56	90
	B. NAVY-MARINE CORPS	1014	135	796	83
	C. AIR FORCE	1159	206	71	882
7.	BEDS OCCUPIED BY DEPENDENTS OF RETIRED AND DECEASED US MILITARY PERSONNEL - TOTAL	2215	910	476	829
	A. ARMY	829	599	73	157
	B. NAVY-MARINE CORPS	570	113	335	122
	C. AIR FORCE	816	198	68	550
8.	BEDS OCCUPIED BY DEPENDENTS OF OTHER UNIFORMED PERSONNEL (PHS,CG,NOAA) - TOTAL	52	16	25	11
9.	BEDS OCCUPIED BY ALL OTHER BENEFICIARIES - TOTAL	703	557	64	82

TABLE 1.2
DEPARTMENT OF DEFENSE
SELECTED DATA CONCERNING MEDICAL CARE
PROVIDED AT FIXED MILITARY FACILITIES
FOR QUARTER ENDING
MARCH 1981

OPERATING BEDS - UNITED STATES		DOD TOTAL	ARMY FACILITIES	NAVY FACILITIES	AIR FORCE FACILITIES
1.	NUMBER OF OPERATING BEDS	15887	7167	3665	5055
2.	NUMBER OF OPERATING BASSINETS	1556	447	265	844
3.	NUMBER OF BEDS OCCUPIED (DAILY AVERAGE)	13163	6285	3006	3872
4.	BEDS OCCUPIED BY US ACTIVE DUTY UNIFORMED PERSONNEL	5063	2558	1172	1333
	A. MILITARY	5033	2550	1157	1326
	(1) ARMY	2329	2191	45	93
	(2) NAVY-MARINE CORPS	1340	171	1079	90
	(3) AIR FORCE	1364	188	33	1143
5.	BEDS OCCUPIED BY RETIRED US UNIFORMED PERSONNEL (PHS,CG,NOAA)	30	8	15	7
	BEDS OCCUPIED BY RETIRED US UNIFORMED PERSONNEL	2348	1050	524	774
	A. RETIRED MILITARY	2328	1045	513	770
	(1) ARMY	963	732	78	153
	(2) NAVY-MARINE CORPS	589	119	356	114
	(3) AIR FORCE	776	194	79	503
	B. OTHER RETIRED UNIFORMED PERSONNEL (PHS,CG,NOAA)	20	5	11	4
6.	BEDS OCCUPIED BY DEPENDENTS OF US ACTIVE DUTY MILITARY PERSONNEL	2995	1332	777	886
	A. ARMY	1167	1050	47	70
	B. NAVY-MARINE CORPS	897	129	695	73
	C. AIR FORCE	931	153	35	743
7.	BEDS OCCUPIED BY DEPENDENTS OF RETIRED AND DECEASED US MILITARY PERSONNEL	2172	895	464	813
	A. ARMY	809	589	68	152
	B. NAVY-MARINE CORPS	559	111	329	119
	C. AIR FORCE	804	195	67	542
8.	BEDS OCCUPIED BY DEPENDENTS OF OTHER UNIFORMED PERSONNEL (PHS,CG,NOAA)	51	16	24	11
9.	BEDS OCCUPIED BY ALL OTHER BENEFICIARIES	534	434	45	55

TABLE 1.3
DEPARTMENT OF DEFENSE
SELECTED DATA CONCERNING MEDICAL CARE
PROVIDED AT FIXED MILITARY FACILITIES
FOR QUARTER ENDING
MARCH 1981

OPERATING BEDS - OUTSIDE UNITED STATES		DOD TOTAL	ARMY FACILITIES	NAVY FACILITIES	AIR FORCE FACILITIES
1.	NUMBER OF OPERATING BEDS - TOTAL	2924	1745	507	672
2.	NUMBER OF OPERATING BASSINETS - TOTAL	417	229	46	142
3.	NUMBER OF BEDS OCCUPIED (DAILY AVERAGE) - TOTAL	2219	1342	366	511
4.	BEDS OCCUPIED BY US ACTIVE DUTY UNIFORMED PERSONNEL - TOTAL	1180	732	173	275
	A. MILITARY - TOTAL	1179	732	172	275
	(1) ARMY	726	683	6	37
	(2) NAVY-MARINE CORPS	190	10	148	32
	(3) AIR FORCE	263	39	18	206
B.	OTHER UNIFORMED PERSONNEL (PHS,CG,NOAA) - TOTAL	1	0	1	0
5.	BEDS OCCUPIED BY RETIRED US UNIFORMED PERSONNEL - TOTAL	72	33	15	24
	A. RETIRED MILITARY - TOTAL	71	33	14	24
	(1) ARMY	38	27	4	7
	(2) NAVY-MARINE CORPS	17	2	9	6
	(3) AIR FORCE	16	4	1	11
B.	OTHER RETIRED UNIFORMED PERSONNEL (PHS,CG,NOAA) - TOTAL	1	0	1	0
6.	BEDS OCCUPIED BY DEPENDENTS OF US ACTIVE DUTY MILITARY PERSONNEL - TOTAL	754	439	146	169
	A. ARMY	409	380	9	20
	B. NAVY-MARINE CORPS	117	6	101	10
	C. AIR FORCE	228	53	36	139
7.	BEDS OCCUPIED BY DEPENDENTS OF RETIRED AND DECEASED US MILITARY PERSONNEL - TOTAL	43	15	12	16
	A. ARMY	20	10	5	5
	B. NAVY-MARINE CORPS	11	2	6	3
	C. AIR FORCE	12	3	1	8
8.	BEDS OCCUPIED BY DEPENDENTS OF OTHER UNIFORMED PERSONNEL (PHS,CG,NOAA) - TOTAL	1	0	1	0
9.	BEDS OCCUPIED BY ALL OTHER BENEFICIARIES - TOTAL	169	123	19	27

TABLE 2.1
DEPARTMENT OF DEFENSE
SELECTED DATA CONCERNING MEDICAL CARE
PROVIDED AT FIXED MILITARY FACILITIES
FOR QUARTER ENDING
MARCH 1981

ADMISSIONS - WORLDWIDE		DOD TOTAL	ARMY FACILITIES	NAVY FACILITIES	AIR FORCE FACILITIES
10.	NUMBER OF ADMISSIONS	228732	104477	55155	69100
11.	ADMISSIONS OF US ACTIVE DUTY UNIFORMED PERSONNEL	78153	35093	19041	24019
	A. MILITARY	77723	35010	18796	23917
	(1) ARMY	33333	31330	613	1390
	(2) NAVY-MARINE CORPS	19924	1431	17442	1051
	(3) AIR FORCE	24466	2249	741	21476
	B. OTHER UNIFORMED PERSONNEL (PHS,CG,NOAA)	430	83	245	102
12.	ADMISSIONS OF RETIRED US UNIFORMED PERSONNEL	25742	10692	6107	8943
	A. ADMISSIONS OF RETIRED MILITARY	25512	10634	5984	8894
	(1) ARMY	10148	7509	936	1703
	(2) NAVY-MARINE CORPS	6639	1120	4173	1346
	(3) AIR FORCE	8725	2005	875	5845
	B. ADMISSIONS OF OTHER RETIRED UNIFORMED PERSONNEL (PHS,CG,NOAA)	230	58	123	49
13.	ADMISSIONS OF DEPENDENTS OF US ACTIVE DUTY MILITARY PERSONNEL	83492	38767	21603	23122
	A. ARMY	35122	32093	1131	1898
	B. NAVY-MARINE CORPS	23298	2715	18946	1637
	C. AIR FORCE	25072	3959	1526	19587
14.	ADMISSIONS OF DEPENDENTS OF RETIRED AND DECEASED US MILITARY PERSONNEL	29261	11229	6741	11291
	A. ARMY	10482	7442	1013	2027
	B. NAVY-MARINE CORPS	7670	1319	4710	1641
	C. AIR FORCE	11109	2468	1018	7623
15.	ADMISSIONS OF DEPENDENTS OF OTHER UNIFORMED MILITARY PERSONNEL	996	295	472	229
16.	ADMISSIONS OF ALL OTHER BENEFICIARIES	11088	8401	1191	1496

TABLE 2.2
DEPARTMENT OF DEFENSE
SELECTED DATA CONCERNING MEDICAL CARE
PROVIDED AT FIXED MILITARY FACILITIES
FOR QUARTER ENDING
MARCH 1981

	ADMISSIONS - UNITED STATES	DOD TOTAL	ARMY FACILITIES	NAVY FACILITIES	AIR FORCE FACILITIES
10. NUMBER OF ADMISSIONS	- TOTAL	193240	84325	48084	60831
11. ADMISSIONS OF US ACTIVE DUTY UNIFORMED PERSONNEL	- TOTAL	62999	26885	15991	20123
A. MILITARY	- TOTAL	62597	26803	15771	20023
(1) ARMY		25220	23816	513	891
(2) NAVY-MARINE CORPS		16907	1340	14822	745
(3) AIR FORCE		20470	1647	436	18387
B. OTHER UNIFORMED PERSONNEL (PHS,CG,NOAA)	- TOTAL	402	82	220	100
12. ADMISSIONS OF RETIRED US UNIFORMED PERSONNEL	- TOTAL	25056	10405	5907	8744
A. ADMISSIONS OF RETIRED MILITARY		24828	10347	5786	8695
(1) ARMY		9804	7271	873	1660
(2) NAVY-MARINE CORPS		6459	1104	4060	1295
(3) AIR FORCE		8565	1972	853	5740
B. ADMISSIONS OF OTHER RETIRED UNIFORMED PERSONNEL (PHS,CG,NOAA)	- TOTAL	228	58	121	49
13. ADMISSIONS OF DEPENDENTS OF US ACTIVE DUTY MILITARY PERSONNEL	- TOTAL	67169	29101	18362	19706
A. ARMY		26088	23640	928	1520
B. NAVY-MARINE CORPS		20768	2615	16683	1470
C. AIR FORCE		20313	2846	751	16716
14. ADMISSIONS OF DEPENDENTS OF RETIRED AND DECEASED US MILITARY PERSONNEL	- TOTAL	28670	11052	6506	11112
A. ARMY		10230	7322	929	1979
B. NAVY-MARINE CORPS		7490	1303	4590	1597
C. AIR FORCE		10950	2427	987	7536
15. ADMISSIONS OF DEPENDENTS OF OTHER UNIFORMED MILITARY PERSONNEL	- TOTAL	967	294	450	223
16. ADMISSIONS OF ALL OTHER BENEFICIARIES	- TOTAL	8379	6588	868	923

TABLE 2.3
DEPARTMENT OF DEFENSE
SELECTED DATA CONCERNING MEDICAL CARE
PROVIDED AT FIXED MILITARY FACILITIES
FOR QUARTER ENDING
MARCH 1981

		DOD TOTAL	ARMY FACILITIES	NAVY FACILITIES	AIR FORCE FACILITIES
10.	ADMISSIONS - OUTSIDE UNITED STATES NUMBER OF ADMISSIONS	35492	20152	7071	8269
11.	ADMISSIONS OF US ACTIVE DUTY UNIFORMED PERSONNEL	15154	8208	3050	3896
	A. MILITARY	15126	8207	3025	3894
	(1) ARMY	8113	7514	100	499
	(2) NAVY-MARINE CORPS	3017	91	2620	306
	(3) AIR FORCE	3996	602	305	3089
	B. OTHER UNIFORMED PERSONNEL (PHS,CG,NOAA)	28	1	25	2
12.	ADMISSIONS OF RETIRED US UNIFORMED PERSONNEL	686	287	200	199
	A. ADMISSIONS OF RETIRED MILITARY	684	287	198	199
	(1) ARMY	344	238	63	43
	(2) NAVY-MARINE CORPS	180	16	113	51
	(3) AIR FORCE	160	33	22	105
	B. ADMISSIONS OF OTHER RETIRED UNIFORMED PERSONNEL (PHS,CG,NOAA)	2	0	2	0
13.	ADMISSIONS OF DEPENDENTS OF US ACTIVE DUTY MILITARY PERSONNEL	16323	9666	3241	3416
	A. ARMY	9034	8453	203	378
	B. NAVY-MARINE CORPS	2530	100	2263	167
	C. AIR FORCE	4759	1113	775	2871
14.	ADMISSIONS OF DEPENDENTS OF RETIRED AND DECEASED US MILITARY PERSONNEL	591	177	235	179
	A. ARMY	252	120	84	48
	B. NAVY-MARINE CORPS	180	16	120	44
	C. AIR FORCE	159	41	31	87
15.	ADMISSIONS OF DEPENDENTS OF OTHER UNIFORMED MILITARY PERSONNEL	29	1	22	6
16.	ADMISSIONS OF ALL OTHER BENEFICIARIES	2709	1813	323	573

TABLE 3.1
DEPARTMENT OF DEFENSE
SELECTED DATA CONCERNING MEDICAL CARE
PROVIDED AT FIXED MILITARY FACILITIES
FOR QUARTER ENDING
MARCH 1981

-----		-----		-----		-----		-----	
OUTPATIENT VISITS - WORLDWIDE		DOD		ARMY		NAVY		AIR FORCE	
		TOTAL		FACILITIES		FACILITIES		FACILITIES	
17.	NUMBER OF OUTPATIENT VISITS	- TOTAL	12109825	5143605	3163744	3802476			
18.	OUTPATIENT VISITS BY US ACTIVE DUTY UNIFORMED PERSONNEL	- TOTAL	4839931	2192150	1350849	1296932			
A.	MILITARY	- TOTAL	4820227	2189087	1336582	1294558			
	(1) ARMY		2153188	2099072	18436	35680			
	(2) NAVY-MARINE CORPS		1357349	35554	1299989	21806			
	(3) AIR FORCE		1309690	54461	18157	1237072			
B.	OTHER UNIFORMED PERSONNEL. (PHS, CG, NOAA)	- TOTAL	19704	3063	14267	2374			
19.	OUTPATIENT VISITS BY RETIRED US UNIFORMED PERSONNEL	- TOTAL	994258	415663	235993	342602			
20.	OUTPATIENT VISITS BY DEPENDENTS OF US ACTIVE DUTY UNIFORMED PERSONNEL	- TOTAL	4041545	1597053	1001397	1443095			
A.	DEPENDENTS OF MILITARY PERSONNEL	- TOTAL	4011303	1589598	985499	1436206			
	(1) ARMY		1499501	1389401	36406	73694			
	(2) NAVY-MARINE CORPS		1039114	78308	911777	49029			
	(3) AIR FORCE		1472688	121889	37316	1313483			
B.	DEPENDENTS OF OTHER UNIFORMED PERSONNEL (PHS, CG, NOAA)	- TOTAL	30242	7455	15898	6889			
21.	OUTPATIENT VISITS BY DEPENDENTS OF RETIRED AND DECEASED US UNIFORMED PERSONNEL	- TOTAL	1452954	542205	307950	602799			
22.	OUTPATIENT VISITS BY ALL OTHER BENEFICIARIES	- TOTAL	781137	396534	267555	117048			
23.	NUMBER OF LIVE BIRTHS	- TOTAL	24254	10169	6750	7335			

TABLE 3.2
DEPARTMENT OF DEFENSE
SELECTED DATA CONCERNING MEDICAL CARE
PROVIDED AT FIXED MILITARY FACILITIES
FOR QUARTER ENDING
MARCH 1981

OUTPATIENT VISITS - UNITED STATES		DOD TOTAL	ARMY FACILITIES	NAVY FACILITIES	AIR FORCE FACILITIES
17.	NUMBER OF OUTPATIENT VISITS	10277939	4120359	2878582	3278998
18.	OUTPATIENT VISITS BY US ACTIVE DUTY UNIFORMED PERSONNEL	3879347	1631967	1200648	1046732
A.	MILITARY	3861118	1628916	1187723	1044479
	(1) ARMY	1589944	1555384	14515	20045
	(2) NAVY-MARINE CORPS	1210151	32983	1161674	15494
	(3) AIR FORCE	1061023	40549	11534	1008940
B.	OTHER UNIFORMED PERSONNEL (PHS, CG, NOAA)	18229	3051	12925	2253
19.	OUTPATIENT VISITS BY RETIRED US UNIFORMED PERSONNEL - TOTAL	973881	406903	230239	336739
20.	OUTPATIENT VISITS BY DEPENDENTS OF US ACTIVE DUTY UNIFORMED PERSONNEL	3340218	1237491	906200	1196527
A.	DEPENDENTS OF MILITARY PERSONNEL	3310866	1230057	890896	1189913
	(1) ARMY	1144679	1059358	31481	53840
	(2) NAVY-MARINE CORPS	951614	74959	832600	44055
	(3) AIR FORCE	1214573	95740	26815	1092018
B.	DEPENDENTS OF OTHER UNIFORMED PERSONNEL (PHS, CG, NOAA)	29352	7434	15304	6614
21.	OUTPATIENT VISITS BY DEPENDENTS OF RETIRED AND DECEASED US UNIFORMED PERSONNEL	1433028	536076	300766	596186
22.	OUTPATIENT VISITS BY ALL OTHER BENEFICIARIES	651465	307922	240729	102814
23.	NUMBER OF LIVE BIRTHS	19626	7552	5748	6326

TABLE 3.3
DEPARTMENT OF DEFENSE
SELECTED DATA CONCERNING MEDICAL CARE
PROVIDED AT FIXED MILITARY FACILITIES
FOR QUARTER ENDING
MARCH 1981

	OUTPATIENT VISITS - OUTSIDE UNITED STATES	DOD TOTAL	ARMY FACILITIES	NAVY FACILITIES	AIR FORCE FACILITIES
17. NUMBER OF OUTPATIENT VISITS	- TOTAL	1831886	1023246	285162	523478
18. OUTPATIENT VISITS BY US ACTIVE DUTY UNIFORMED PERSONNEL	- TOTAL	960584	560183	150201	250200
A. MILITARY	- TOTAL	959109	560171	148859	250079
(1) ARMY		563244	543688	3921	15635
(2) NAVY-MARINE CORPS		147198	2571	138315	6312
(3) AIR FORCE		248667	13912	6623	228132
B. OTHER UNIFORMED PERSONNEL (PHS,CG,NOAA)	- TOTAL	1475	12	1342	121
19. OUTPATIENT VISITS BY RETIRED US UNIFORMED PERSONNEL	- TOTAL	20377	8760	5754	5863
20. OUTPATIENT VISITS BY DEPENDENTS OF US ACTIVE DUTY UNIFORMED PERSONNEL	- TOTAL	701327	359562	95197	246568
A. DEPENDENTS OF MILITARY PERSONNEL	- TOTAL	700437	359541	94603	246293
(1) ARMY		354822	330043	4925	19854
(2) NAVY-MARINE CORPS		87500	3349	79177	4974
(3) AIR FORCE		258115	26149	10501	221465
B. DEPENDENTS OF OTHER UNIFORMED PERSONNEL (PHS,CG,NOAA)	- TOTAL	890	21	594	275
21. OUTPATIENT VISITS BY DEPENDENTS OF RETIRED AND DECEASED US UNIFORMED PERSONNEL	- TOTAL	19926	6129	7184	6613
22. OUTPATIENT VISITS BY ALL OTHER BENEFICIARIES	- TOTAL	129672	88612	26826	14234
23. NUMBER OF LIVE BIRTHS	- TOTAL	4628	2617	1002	1009

G L O S S A R Y

Operating Bed. A bed that is currently set up and ready in all respects for the care of a patient. It must include supporting space, equipment and staff to operate under normal circumstances. Excluded, are nursery bassinets and transient patients' beds.

Occupied Bed. A bed assigned as of midnight to a patient, to include a patient on pass or liberty not in excess of 72 hours, and any bassinet assigned to a newborn infant whose mother has been discharged from the hospital. The definition excludes: any bed assigned to a patient subsisting out, on leave, or absent without leave; any bed occupied by a transient patient; and any bassinet assigned to a newborn infant whose mother is still a patient in the hospital.

Operating Bassinet. A bed designed for the care of an infant that is currently set up in the newborn nursery and ready in all respects for use. It must include support space, equipment and staff to operate under normal circumstances. Excluded are infant transporters.

Admission. An admission is the act of placing an individual under treatment or observation in a medical center or a hospital. The day of admission is the day on which the medical center or hospital makes a formal acceptance of the patient who is to be provided with room, board, and continuous nursing service in an area of the hospital where patients normally stay at least overnight. If both an admission and discharge occur on the same day, then that day is considered as a day of admission and shall be counted as one occupied bed day. The admission of a newborn is deemed to occur at the time of birth.

Outpatient Visits. Visits made to each dispensary or separate, organized clinic of a fixed medical treatment facility for medical advice, examination, diagnosis or treatment, including visits by military patients who are excused from duty for medical reasons but who have not been admitted for inpatient care in a facility authorized beds for inpatient care and any visits made incident to complete or flight physicals.

Live Births. A live birth is the complete expulsion or extraction from its mother of a product of conception, irrespective of the duration of pregnancy which after such separation, breathes or shows any other evidence of life such as beating of the heart, pulsation of the umbilical cord, or definite movement of voluntary muscles, whether or not the umbilical cord has been cut or the placenta is attached; each such product of such a birth is considered liveborn.

ND