

AD-A152 799

SELECTED MEDICAL CARE STATISTICS, FIRST QUARTER, FY-82. 1/1  
(U) WASHINGTON HEADQUARTERS SERVICE (DOD) DIR FOR INFO  
OP & RPTS. DEC 81. DIOR/L02-82/01

UNCLASSIFIED

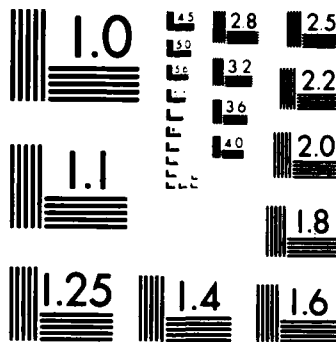
F/G 6/5 N/L

1 OF 1  
AD-A152 799

END  
FILMED  
11 04 85

# 1 OF 1

# AD-A152 799



MICROCOPY RESOLUTION TEST CHART  
NATIONAL BUREAU OF STANDARDS 1963 A

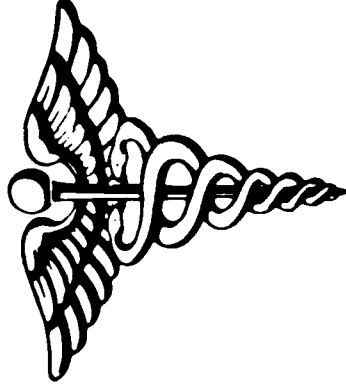
**THIS REPORT IS UNCLASSIFIED AND  
ITS DISTRIBUTION IS UNLIMITED**



**DEPARTMENT OF DEFENSE**

**SELECTED MEDICAL CARE STATISTICS**

**(QUARTER ENDING DECEMBER 31, 1981)**





**DEPARTMENT OF DEFENSE**

**SELECTED MEDICAL CARE STATISTICS**



**OSD WASHINGTON HEADQUARTERS SERVICES**

**whs**

**DIRECTORATE FOR INFORMATION  
OPERATIONS AND REPORTS (DIOR)  
THE PENTAGON, WASHINGTON, D.C.**

F O R E W O R D

SELECTED MEDICAL CARE STATISTICS (SMCS) is a quarterly publication prepared by the Washington Headquarters Services, Directorate for Information Operations and Reports (WHS/DIOR) of the Office of the Secretary of Defense.

SMCS presents quarterly summary data concerning medical care provided at fixed military medical facilities located in (1) the United States and (2) outside the United States, in territories, possessions and foreign countries.

This publication is generated from a computerized data base developed and maintained in consonance with Department of Defense Instruction (DoDI) 6015.14, May 19, 1979, under Reports Control Symbol DD-COMP(Q)1474 by the Manpower Management Information Division of WHS/DIOR.

The report is approved for public release. Distribution is unlimited at cost. Requests for additional copies and changes in distribution and addresses should be directed to the Director, Washington Headquarters Services, Room 3E843, The Pentagon, Washington, DC 20301.

C O N T E N T S

| <u>Number</u> |  | <u>Page</u> |
|---------------|--|-------------|
| Table 1.1     | Operating Beds/Operating Bassinets/Beds Occupied - Worldwide             | 1           |
| Table 1.2     | Operating Beds/Operating Bassinets/Beds Occupied - United States         | 2           |
| Table 1.3     | Operating Beds/Operating Bassinets/Beds Occupied - Outside United States | 3           |
| Table 2.1     | Admissions - Worldwide   | 4           |
| Table 2.2     | Admissions - United States   | 5           |
| Table 2.3     | Admissions - Outside United States                                       | 6           |
| Table 3.1     | Outpatient Visits and Live Births - Worldwide                            | 7           |
| Table 3.2     | Outpatient Visits and Live Births - United States                        | 8           |
| Table 3.3     | Outpatient Visits and Live Births - Outside United States                | 9           |
|               | Glossary   | 10          |

TABLE 1.1  
 DEPARTMENT OF DEFENSE  
 SELECTED DATA CONCERNING MEDICAL CARE  
 PROVIDED AT FIXED MILITARY FACILITIES  
 FOR QUARTER ENDING  
 DECEMBER 1981

| OPERATING BEDS - WORLDWIDE |   | DOD<br>TOTAL | ARMY<br>FACILITIES | NAVY<br>FACILITIES | AIR FORCE<br>FACILITIES |
|----------------------------|---|--------------|--------------------|--------------------|-------------------------|
| 1.                         | NUMBER OF OPERATING BEDS - TOTAL  | 18631        | 8912               | 4015               | 5704                    |
| 2.                         | NUMBER OF OPERATING BASSINETS - TOTAL   | 1974         | 676                | 311                | 987                     |
| 3.                         | NUMBER OF BEDS OCCUPIED (DAILY AVERAGE) - TOTAL                                   | 13996        | 6899               | 3208               | 3889                    |
| 4.                         | BEDS OCCUPIED BY US ACTIVE DUTY UNIFORMED PERSONNEL - TOTAL                       | 5344         | 2741               | 1248               | 1355                    |
|                            | A. MILITARY - TOTAL   | 5304         | 2730               | 1226               | 1348                    |
|                            | (1) ARMY  | 2547         | 2382               | 47                 | 118                     |
|                            | (2) NAVY-MARINE CORPS   | 1387         | 160                | 1132               | 95                      |
|                            | (3) AIR FORCE   | 1370         | 188                | 47                 | 1135                    |
|                            | B. OTHER UNIFORMED PERSONNEL (PHS,CG,NOAA) - TOTAL                                | 40           | 11                 | 22                 | 7                       |
| 5.                         | BEDS OCCUPIED BY RETIRED US UNIFORMED PERSONNEL - TOTAL                           | 2335         | 1075               | 518                | 742                     |
|                            | A. RETIRED MILITARY - TOTAL   | 2312         | 1067               | 509                | 736                     |
|                            | (1) ARMY  | 950          | 729                | 80                 | 141                     |
|                            | (2) NAVY-MARINE CORPS   | 589          | 118                | 360                | 111                     |
|                            | (3) AIR FORCE   | 772          | 220                | 69                 | 484                     |
|                            | B. OTHER RETIRED UNIFORMED PERSONNEL (PHS,CG,NOAA) - TOTAL                        | 23           | 8                  | 9                  | 6                       |
| 6.                         | BEDS OCCUPIED BY DEPENDENTS OF US ACTIVE DUTY MILITARY PERSONNEL - TOTAL          | 3611         | 1724               | 910                | 977                     |
|                            | A. ARMY   | 1521         | 1374               | 48                 | 99                      |
|                            | B. NAVY-MARINE CORPS  | 1005         | 138                | 792                | 75                      |
|                            | C. AIR FORCE  | 1085         | 212                | 70                 | 803                     |
| 7.                         | BEDS OCCUPIED BY DEPENDENTS OF RETIRED AND DECEASED US MILITARY PERSONNEL - TOTAL | 2011         | 856                | 438                | 717                     |
|                            | A. ARMY   | 782          | 571                | 74                 | 137                     |
|                            | B. NAVY-MARINE CORPS  | 513          | 103                | 304                | 107                     |
|                            | C. AIR FORCE  | 716          | 182                | 61                 | 473                     |
| 8.                         | BEDS OCCUPIED BY DEPENDENTS OF OTHER UNIFORMED PERSONNEL (PHS,CG,NOAA) - TOTAL    | 55           | 14                 | 25                 | 16                      |
| 9.                         | BEDS OCCUPIED BY ALL OTHER BENEFICIARIES - TOTAL                                  | 640          | 489                | 69                 | 82                      |

TABLE 1.2  
DEPARTMENT OF DEFENSE  
SELECTED DATA CONCERNING MEDICAL CARE  
PROVIDED AT FIXED MILITARY FACILITIES  
FOR QUARTER ENDING  
DECEMBER 1981

|  | OPERATING BEDS - UNITED STATES | DOD<br>TOTAL | ARMY<br>FACILITIES | NAVY<br>FACILITIES | AIR FORCE<br>FACILITIES |
|--|--------------------------------|--------------|--------------------|--------------------|-------------------------|
| 1. NUMBER OF OPERATING BEDS  | - TOTAL                        | 15768        | 7167               | 3586               | 5015                    |
| 2. NUMBER OF OPERATING BASSINETS   | - TOTAL                        | 1538         | 447                | 262                | 829                     |
| 3. NUMBER OF BEDS OCCUPIED (DAILY AVERAGE)                                   | - TOTAL                        | 11948        | 5648               | 2873               | 3427                    |
| 4. BEDS OCCUPIED BY US ACTIVE DUTY UNIFORMED PERSONNEL                       | - TOTAL                        | 4273         | 2075               | 1101               | 1097                    |
| A. MILITARY  | - TOTAL                        | 4234         | 2064               | 1080               | 1090                    |
| (1) ARMY   |                                | 1893         | 1767               | 43                 | 83                      |
| (2) NAVY-MARINE CORPS  |                                | 1230         | 150                | 1004               | 76                      |
| (3) AIR FORCE  |                                | 1111         | 147                | 33                 | 931                     |
| B. OTHER UNIFORMED PERSONNEL (PHS, CG, NOAA)                                 | - TOTAL                        | 39           | 11                 | 21                 | 7                       |
| 5. BEDS OCCUPIED BY RETIRED US UNIFORMED PERSONNEL                           | - TOTAL                        | 2271         | 1041               | 505                | 725                     |
| A. RETIRED MILITARY  | - TOTAL                        | 2249         | 1033               | 496                | 720                     |
| (1) ARMY   |                                | 918          | 704                | 76                 | 138                     |
| (2) NAVY-MARINE CORPS  |                                | 575          | 116                | 352                | 107                     |
| (3) AIR FORCE  |                                | 756          | 213                | 68                 | 475                     |
| B. OTHER RETIRED UNIFORMED PERSONNEL (PHS, CG, NOAA)                         | - TOTAL                        | 22           | 8                  | 9                  | 5                       |
| 6. BEDS OCCUPIED BY DEPENDENTS OF US ACTIVE DUTY MILITARY PERSONNEL          | - TOTAL                        | 2902         | 1305               | 770                | 827                     |
| A. ARMY  |                                | 1142         | 1025               | 38                 | 79                      |
| B. NAVY-MARINE CORPS   |                                | 892          | 132                | 696                | 64                      |
| C. AIR FORCE   |                                | 868          | 148                | 36                 | 684                     |
| 7. BEDS OCCUPIED BY DEPENDENTS OF RETIRED AND DECEASED US MILITARY PERSONNEL | - TOTAL                        | 1974         | 842                | 427                | 705                     |
| A. ARMY  |                                | 763          | 560                | 69                 | 134                     |
| B. NAVY-MARINE CORPS   |                                | 503          | 102                | 298                | 103                     |
| C. AIR FORCE   |                                | 708          | 180                | 60                 | 468                     |
| 8. BEDS OCCUPIED BY DEPENDENTS OF OTHER UNIFORMED PERSONNEL (PHS, CG, NOAA)  | - TOTAL                        | 53           | 14                 | 23                 | 16                      |
| 9. BEDS OCCUPIED BY ALL OTHER BENEFICIARIES                                  | - TOTAL                        | 475          | 371                | 47                 | 57                      |

TABLE 1.3  
 DEPARTMENT OF DEFENSE  
 SELECTED DATA CONCERNING MEDICAL CARE  
 PROVIDED AT FIXED MILITARY FACILITIES  
 FOR QUARTER ENDING  
 DECEMBER 1981

| OPERATING BEDS - OUTSIDE UNITED STATES   | DOD<br>TOTAL | ARMY<br>FACILITIES | NAVY<br>FACILITIES | AIR FORCE<br>FACILITIES |
|--|--------------|--------------------|--------------------|-------------------------|
| 1. NUMBER OF OPERATING BEDS - TOTAL  | 2863         | 1745               | 429                | 689                     |
| 2. NUMBER OF OPERATING BASSINETS - TOTAL   | 436          | 229                | 49                 | 158                     |
| 3. NUMBER OF BEDS OCCUPIED (DAILY AVERAGE) - TOTAL                                   | 2048         | 1251               | 335                | 462                     |
| 4. BEDS OCCUPIED BY US ACTIVE DUTY UNIFORMED PERSONNEL - TOTAL                       | 1071         | 666                | 147                | 258                     |
| A. MILITARY  | 1070         | 666                | 146                | 258                     |
| (1) ARMY   | 654          | 615                | 4                  | 35                      |
| (2) NAVY-MARINE CORPS  | 157          | 10                 | 128                | 19                      |
| (3) AIR FORCE  | 259          | 41                 | 14                 | 204                     |
| B. OTHER UNIFORMED PERSONNEL (PHS, CG, NOAA) - TOTAL                                 | 1            | 0                  | 1                  | 0                       |
| 5. BEDS OCCUPIED BY RETIRED US UNIFORMED PERSONNEL - TOTAL                           | 64           | 34                 | 13                 | 17                      |
| A. RETIRED MILITARY  | 63           | 34                 | 13                 | 16                      |
| (1) ARMY   | 32           | 25                 | 4                  | 3                       |
| (2) NAVY-MARINE CORPS  | 14           | 2                  | 8                  | 4                       |
| (3) AIR FORCE  | 17           | 7                  | 1                  | 9                       |
| B. OTHER RETIRED UNIFORMED PERSONNEL (PHS, CG, NOAA) - TOTAL                         | 1            | 0                  | 0                  | 1                       |
| 6. BEDS OCCUPIED BY DEPENDENTS OF US ACTIVE DUTY MILITARY PERSONNEL - TOTAL          | 709          | 419                | 140                | 150                     |
| A. ARMY  | 379          | 349                | 10                 | 20                      |
| B. NAVY-MARINE CORPS   | 113          | 6                  | 96                 | 11                      |
| C. AIR FORCE   | 217          | 64                 | 34                 | 119                     |
| 7. BEDS OCCUPIED BY DEPENDENTS OF RETIRED AND DECEASED US MILITARY PERSONNEL - TOTAL | 37           | 14                 | 11                 | 12                      |
| A. ARMY  | 19           | 11                 | 5                  | 3                       |
| B. NAVY-MARINE CORPS   | 10           | 1                  | 5                  | 4                       |
| C. AIR FORCE   | 8            | 2                  | 1                  | 5                       |
| 8. BEDS OCCUPIED BY DEPENDENTS OF OTHER UNIFORMED PERSONNEL (PHS, CG, NOAA) - TOTAL  | 2            | 0                  | 2                  | 0                       |
| 9. BEDS OCCUPIED BY ALL OTHER BENEFICIARIES - TOTAL                                  | 165          | 118                | 22                 | 25                      |

TABLE 2.1  
DEPARTMENT OF DEFENSE  
SELECTED DATA CONCERNING MEDICAL CARE  
PROVIDED AT FIXED MILITARY FACILITIES  
FOR QUARTER ENDING  
DECEMBER 1981

| ADMISSIONS - WORLDWIDE |  | DOD<br>TOTAL | ARMY<br>FACILITIES | NAVY<br>FACILITIES | AIR FORCE<br>FACILITIES |
|------------------------|--|--------------|--------------------|--------------------|-------------------------|
| 10.                    | NUMBER OF ADMISSIONS   | 211422       | 95181              | 53228              | 63013                   |
| 11.                    | ADMISSIONS OF US ACTIVE DUTY UNIFORMED PERSONNEL                       | 67885        | 29176              | 17813              | 20896                   |
|                        | A. MILITARY  | 67379        | 29072              | 17526              | 20781                   |
|                        | (1) ARMY   | 27618        | 25775              | 546                | 1297                    |
|                        | (2) NAVY-MARINE CORPS  | 18544        | 1410               | 16263              | 871                     |
|                        | (3) AIR FORCE  | 21217        | 1887               | 717                | 18613                   |
|                        | B. OTHER UNIFORMED PERSONNEL (PHS,CG,NOAA)                             | 506          | 104                | 287                | 115                     |
| 12.                    | ADMISSIONS OF RETIRED US UNIFORMED PERSONNEL                           | 24020        | 10290              | 5670               | 8060                    |
|                        | A. ADMISSIONS OF RETIRED MILITARY                                      | 23810        | 10231              | 5568               | 8011                    |
|                        | (1) ARMY   | 9440         | 7051               | 862                | 1527                    |
|                        | (2) NAVY-MARINE CORPS  | 6213         | 1117               | 3938               | 1158                    |
|                        | (3) AIR FORCE  | 8157         | 2063               | 768                | 5326                    |
|                        | B. ADMISSIONS OF OTHER RETIRED UNIFORMED PERSONNEL (PHS,CG,NOAA)       | 210          | 59                 | 102                | 49                      |
| 13.                    | ADMISSIONS OF DEPENDENTS OF US ACTIVE DUTY MILITARY PERSONNEL          | 82762        | 38620              | 21880              | 22262                   |
|                        | A. ARMY  | 35021        | 31924              | 1056               | 2041                    |
|                        | B. NAVY-MARINE CORPS   | 23765        | 2853               | 19295              | 1617                    |
|                        | C. AIR FORCE   | 23976        | 3843               | 1529               | 18604                   |
| 14.                    | ADMISSIONS OF DEPENDENTS OF RETIRED AND DECEASED US MILITARY PERSONNEL | 26575        | 10445              | 6135               | 9995                    |
|                        | A. ARMY  | 9792         | 6967               | 966                | 1859                    |
|                        | B. NAVY-MARINE CORPS   | 6904         | 1259               | 4261               | 1384                    |
|                        | C. AIR FORCE   | 9879         | 2219               | 908                | 6752                    |
| 15.                    | ADMISSIONS OF DEPENDENTS OF OTHER UNIFORMED MILITARY PERSONNEL         | 1005         | 238                | 501                | 266                     |
| 16.                    | ADMISSIONS OF ALL OTHER BENEFICIARIES                                  | 9175         | 6412               | 1229               | 1534                    |

TABLE 2.2  
DEPARTMENT OF DEFENSE  
SELECTED DATA CONCERNING MEDICAL CARE  
PROVIDED AT FIXED MILITARY FACILITIES  
FOR QUARTER ENDING  
DECEMBER 1981

| ADMISSIONS - UNITED STATES |  | DOD<br>TOTAL | ARMY<br>FACILITIES | NAVY<br>FACILITIES | AIR FORCE<br>FACILITIES |
|----------------------------|--|--------------|--------------------|--------------------|-------------------------|
| 10.                        | NUMBER OF ADMISSIONS   | 176802       | 75557              | 46282              | 54963                   |
| 11.                        | ADMISSIONS OF US ACTIVE DUTY UNIFORMED PERSONNEL                       | 52221        | 21386              | 14938              | 16897                   |
|                            | A. MILITARY  | 52738        | 21282              | 14670              | 16786                   |
|                            | (1) ARMY   | 19927        | 18670              | 460                | 797                     |
|                            | (2) NAVY-MARINE CORPS  | 15771        | 1293               | 13815              | 663                     |
|                            | (3) AIR FORCE  | 17040        | 1319               | 395                | 15326                   |
|                            | B. OTHER UNIFORMED PERSONNEL (PHS,CG,NOAA)                             | 483          | 104                | 268                | 111                     |
| 12.                        | ADMISSIONS OF RETIRED US UNIFORMED PERSONNEL                           | 23365        | 9992               | 5489               | 7884                    |
|                            | A. ADMISSIONS OF RETIRED MILITARY                                      | 23160        | 9933               | 5387               | 7840                    |
|                            | (1) ARMY   | 9108         | 6818               | 804                | 1486                    |
|                            | (2) NAVY-MARINE CORPS  | 6053         | 1094               | 3839               | 1120                    |
|                            | (3) AIR FORCE  | 7999         | 2021               | 744                | 5234                    |
|                            | B. ADMISSIONS OF OTHER RETIRED UNIFORMED PERSONNEL (PHS,CG,NOAA)       | 205          | 59                 | 102                | 44                      |
| 13.                        | ADMISSIONS OF DEPENDENTS OF US ACTIVE DUTY MILITARY PERSONNEL          | 66795        | 29088              | 18595              | 19112                   |
|                            | A. ARMY  | 26107        | 23619              | 830                | 1658                    |
|                            | B. NAVY-MARINE CORPS   | 21227        | 2770               | 17019              | 1438                    |
|                            | C. AIR FORCE   | 19461        | 2699               | 746                | 16016                   |
| 14.                        | ADMISSIONS OF DEPENDENTS OF RETIRED AND DECEASED US MILITARY PERSONNEL | 26018        | 10270              | 5930               | 9818                    |
|                            | A. ARMY  | 9547         | 6844               | 883                | 1820                    |
|                            | B. NAVY-MARINE CORPS   | 6754         | 1246               | 4165               | 1343                    |
|                            | C. AIR FORCE   | 9717         | 2180               | 882                | 6655                    |
| 15.                        | ADMISSIONS OF DEPENDENTS OF OTHER UNIFORMED MILITARY PERSONNEL         | 967          | 235                | 468                | 264                     |
| 16.                        | ADMISSIONS OF ALL OTHER BENEFICIARIES                                  | 6436         | 4586               | 862                | 988                     |

TABLE 2.3  
 DEPARTMENT OF DEFENSE  
 SELECTED DATA CONCERNING MEDICAL CARE  
 PROVIDED AT FIXED MILITARY FACILITIES  
 FOR QUARTER ENDING  
 DECEMBER 1981

| ADMISSIONS - OUTSIDE UNITED STATES |  | DOD<br>TOTAL | ARMY<br>FACILITIES | NAVY<br>FACILITIES | AIR FORCE<br>FACILITIES |
|------------------------------------|--|--------------|--------------------|--------------------|-------------------------|
| 10.                                | NUMBER OF ADMISSIONS   | 34620        | 19624              | 6946               | 8050                    |
| 11.                                | ADMISSIONS OF US ACTIVE DUTY UNIFORMED PERSONNEL                       | 14664        | 7790               | 2875               | 3999                    |
|                                    | A. MILITARY  | 14641        | 7790               | 2856               | 3995                    |
|                                    | (1) ARMY   | 7691         | 7105               | 86                 | 500                     |
|                                    | (2) NAVY-MARINE CORPS  | 2773         | 117                | 2448               | 208                     |
|                                    | (3) AIR FORCE  | 4177         | 568                | 322                | 3287                    |
|                                    | B. OTHER UNIFORMED PERSONNEL (PHS,CG,NOAA)                             | 23           | 0                  | 19                 | 4                       |
| 12.                                | ADMISSIONS OF RETIRED US UNIFORMED PERSONNEL                           | 655          | 298                | 181                | 176                     |
|                                    | A. ADMISSIONS OF RETIRED MILITARY                                      | 650          | 298                | 181                | 171                     |
|                                    | (1) ARMY   | 332          | 233                | 58                 | 41                      |
|                                    | (2) NAVY-MARINE CORPS  | 160          | 23                 | 99                 | 38                      |
|                                    | (3) AIR FORCE  | 158          | 42                 | 24                 | 92                      |
|                                    | B. ADMISSIONS OF OTHER RETIRED UNIFORMED PERSONNEL (PHS,CG,NOAA)       | 5            | 0                  | 0                  | 5                       |
| 13.                                | ADMISSIONS OF DEPENDENTS OF US ACTIVE DUTY MILITARY PERSONNEL          | 15967        | 9532               | 3285               | 3150                    |
|                                    | A. ARMY  | 8914         | 8305               | 226                | 383                     |
|                                    | B. NAVY-MARINE CORPS   | 2538         | 83                 | 2276               | 179                     |
|                                    | C. AIR FORCE   | 4515         | 1144               | 783                | 2588                    |
| 14.                                | ADMISSIONS OF DEPENDENTS OF RETIRED AND DECEASED US MILITARY PERSONNEL | 557          | 175                | 205                | 177                     |
|                                    | A. ARMY  | 245          | 123                | 83                 | 39                      |
|                                    | B. NAVY-MARINE CORPS   | 150          | 13                 | 96                 | 41                      |
|                                    | C. AIR FORCE   | 162          | 39                 | 26                 | 97                      |
| 15.                                | ADMISSIONS OF DEPENDENTS OF OTHER UNIFORMED MILITARY PERSONNEL         | 38           | 3                  | 33                 | 2                       |
| 16.                                | ADMISSIONS OF ALL OTHER BENEFICIARIES                                  | 2739         | 1826               | 367                | 546                     |

TABLE 3.1  
 DEPARTMENT OF DEFENSE  
 SELECTED DATA CONCERNING MEDICAL CARE  
 PROVIDED AT FIXED MILITARY FACILITIES  
 FOR QUARTER ENDING  
 DECEMBER 1981

| -----                         |  | -----   |            | -----      |            | -----      |  | ----- |  |
|-------------------------------|--|---------|------------|------------|------------|------------|--|-------|--|
| OUTPATIENT VISITS - WORLDWIDE |  |         | DOD        | ARMY       | NAVY       | AIR FORCE  |  |       |  |
|                               |  | TOTAL   | FACILITIES | FACILITIES | FACILITIES | FACILITIES |  |       |  |
| 17.                           | NUMBER OF OUTPATIENT VISITS  | - TOTAL | 11329825   | 4769576    | 2993138    | 3567111    |  |       |  |
| 18.                           | OUTPATIENT VISITS BY US ACTIVE DUTY UNIFORMED PERSONNEL                        | - TOTAL | 4497636    | 2001002    | 1292024    | 1204610    |  |       |  |
| A.                            | MILITARY   | - TOTAL | 4476874    | 1996729    | 1278080    | 1202065    |  |       |  |
|                               | (1) ARMY   |         | 1960617    | 1908141    | 18846      | 33630      |  |       |  |
|                               | (2) NAVY-MARINE CORPS  |         | 1297811    | 35156      | 1241224    | 21431      |  |       |  |
|                               | (3) AIR FORCE  |         | 1218446    | 53432      | 18010      | 1147004    |  |       |  |
| B.                            | OTHER UNIFORMED PERSONNEL (PHS, CG, NOAA)                                      | - TOTAL | 20762      | 4273       | 13944      | 2545       |  |       |  |
| 19.                           | OUTPATIENT VISITS BY RETIRED US UNIFORMED PERSONNEL                            | - TOTAL | 988657     | 418733     | 231712     | 338212     |  |       |  |
| 20.                           | OUTPATIENT VISITS BY DEPENDENTS OF US ACTIVE DUTY UNIFORMED PERSONNEL          | - TOTAL | 3747556    | 1481483    | 927114     | 1338959    |  |       |  |
| A.                            | DEPENDENTS OF MILITARY PERSONNEL   | - TOTAL | 3716123    | 1473193    | 912388     | 1330542    |  |       |  |
|                               | (1) ARMY   |         | 1393718    | 1287430    | 35804      | 70484      |  |       |  |
|                               | (2) NAVY-MARINE CORPS  |         | 966235     | 74375      | 843348     | 48512      |  |       |  |
|                               | (3) AIR FORCE  |         | 1356170    | 111388     | 33236      | 1211546    |  |       |  |
| B.                            | DEPENDENTS OF OTHER UNIFORMED PERSONNEL (PHS, CG, NOAA)                        | - TOTAL | 31433      | 8290       | 14726      | 8417       |  |       |  |
| 21.                           | OUTPATIENT VISITS BY DEPENDENTS OF RETIRED AND DECEASED US UNIFORMED PERSONNEL | - TOTAL | 1369897    | 507242     | 295444     | 567211     |  |       |  |
| 22.                           | OUTPATIENT VISITS BY ALL OTHER BENEFICIARIES                                   | - TOTAL | 726079     | 361116     | 246844     | 118119     |  |       |  |
| 23.                           | NUMBER OF LIVE BIRTHS  | - TOTAL | 25801      | 10703      | 7159       | 7939       |  |       |  |

TABLE 3.2  
DEPARTMENT OF DEFENSE  
SELECTED DATA CONCERNING MEDICAL CARE  
PROVIDED AT FIXED MILITARY FACILITIES  
FOR QUARTER ENDING  
DECEMBER 1981

| -----                             |  | ----- |       | -----      |         | -----      |  | -----      |  |
|-----------------------------------|--|-------|-------|------------|---------|------------|--|------------|--|
| OUTPATIENT VISITS - UNITED STATES |  | DOD   |       | ARMY       |         | NAVY       |  | AIR FORCE  |  |
|                                   |  | TOTAL |       | FACILITIES |         | FACILITIES |  | FACILITIES |  |
| 17.                               | NUMBER OF OUTPATIENT VISITS  | -     | TOTAL | 3807374    | 2710437 | 3078394    |  |            |  |
| 18.                               | OUTPATIENT VISITS BY US ACTIVE DUTY UNIFORMED PERSONNEL                        | -     | TOTAL | 1458672    | 1135136 | 966946     |  |            |  |
|                                   | A. MILITARY  | -     | TOTAL | 1454402    | 1122417 | 964467     |  |            |  |
|                                   | (1) ARMY   |       |       | 1380952    | 15511   | 19988      |  |            |  |
|                                   | (2) NAVY-MARINE CORPS  |       |       | 32770      | 1095680 | 15362      |  |            |  |
|                                   | (3) AIR FORCE  |       |       | 40680      | 11226   | 929117     |  |            |  |
|                                   | B. OTHER UNIFORMED PERSONNEL (PHS, CG, NOAA)                                   | -     | TOTAL | 4270       | 12719   | 2479       |  |            |  |
| 19.                               | OUTPATIENT VISITS BY RETIRED US UNIFORMED PERSONNEL                            | -     | TOTAL | 410871     | 225883  | 332497     |  |            |  |
| 20.                               | OUTPATIENT VISITS BY DEPENDENTS OF US ACTIVE DUTY UNIFORMED PERSONNEL          | -     | TOTAL | 1154816    | 839823  | 1115467    |  |            |  |
|                                   | A. DEPENDENTS OF MILITARY PERSONNEL  | -     | TOTAL | 1146542    | 825568  | 1107280    |  |            |  |
|                                   | (1) ARMY   |       |       | 986129     | 30764   | 52494      |  |            |  |
|                                   | (2) NAVY-MARINE CORPS  |       |       | 71742      | 771199  | 43393      |  |            |  |
|                                   | (3) AIR FORCE  |       |       | 88671      | 23605   | 1011393    |  |            |  |
|                                   | B. DEPENDENTS OF OTHER UNIFORMED PERSONNEL (PHS, CG, NOAA)                     | -     | TOTAL | 8274       | 14255   | 8187       |  |            |  |
| 21.                               | OUTPATIENT VISITS BY DEPENDENTS OF RETIRED AND DECEASED US UNIFORMED PERSONNEL | -     | TOTAL | 501496     | 287931  | 560477     |  |            |  |
| 22.                               | OUTPATIENT VISITS BY ALL OTHER BENEFICIARIES                                   | -     | TOTAL | 281519     | 221664  | 103007     |  |            |  |
| 23.                               | NUMBER OF LIVE BIRTHS  | -     | TOTAL | 7949       | 6031    | 6840       |  |            |  |

TABLE 3.3  
 DEPARTMENT OF DEFENSE  
 SELECTED DATA CONCERNING MEDICAL CARE  
 PROVIDED AT FIXED MILITARY FACILITIES  
 FOR QUARTER ENDING  
 DECEMBER 1981

| OUTPATIENT VISITS - OUTSIDE UNITED STATES |  | ARMY<br>FACILITIES | NAVY<br>FACILITIES | AIR FORCE<br>FACILITIES |
|---|--|--------------------|--------------------|-------------------------|
| 17.                                       | NUMBER OF OUTPATIENT VISITS  | 962202             | 282701             | 488717                  |
| 18.                                       | OUTPATIENT VISITS BY US ACTIVE DUTY UNIFORMED PERSONNEL                        | 542330             | 156888             | 237664                  |
|   | A. MILITARY  | 542327             | 155663             | 237598                  |
|   | (1) ARMY   | 527189             | 3335               | 13642                   |
|   | (2) NAVY-MARINE CORPS  | 2386               | 145544             | 6069                    |
|   | (3) AIR FORCE  | 12752              | 6784               | 217887                  |
|   | B. OTHER UNIFORMED PERSONNEL (PHS,CG,NOAA)                                     | 3                  | 1225               | 66                      |
| 19.                                       | OUTPATIENT VISITS BY RETIRED US UNIFORMED PERSONNEL - TOTAL                    | 7862               | 5829               | 5715                    |
| 20.                                       | OUTPATIENT VISITS BY DEPENDENTS OF US ACTIVE DUTY UNIFORMED PERSONNEL          | 326667             | 87291              | 223492                  |
|   | A. DEPENDENTS OF MILITARY PERSONNEL  | 326651             | 86820              | 223262                  |
|   | (1) ARMY   | 301301             | 5040               | 17990                   |
|   | (2) NAVY-MARINE CORPS  | 2633               | 72149              | 5119                    |
|   | (3) AIR FORCE  | 22717              | 9631               | 200153                  |
|   | B. DEPENDENTS OF OTHER UNIFORMED PERSONNEL (PHS,CG,NOAA)                       | 16                 | 471                | 230                     |
| 21.                                       | OUTPATIENT VISITS BY DEPENDENTS OF RETIRED AND DECEASED US UNIFORMED PERSONNEL | 5746               | 7513               | 6734                    |
| 22.                                       | OUTPATIENT VISITS BY ALL OTHER BENEFICIARIES                                   | 79597              | 25180              | 15112                   |
| 23.                                       | NUMBER OF LIVE BIRTHS  | 2754               | 1128               | 1099                    |
|   | - TOTAL  | 1733620            | 282701             | 488717                  |
|   | - TOTAL  | 936882             | 156888             | 237664                  |
|   | - TOTAL  | 935588             | 155663             | 237598                  |
|   | - TOTAL  | 544166             | 3335               | 13642                   |
|   | - TOTAL  | 153999             | 145544             | 6069                    |
|   | - TOTAL  | 237423             | 6784               | 217887                  |
|   | - TOTAL  | 1294               | 1225               | 66                      |
|   | - TOTAL  | 19406              | 5829               | 5715                    |
|   | - TOTAL  | 637450             | 87291              | 223492                  |
|   | - TOTAL  | 636733             | 86820              | 223262                  |
|   | - TOTAL  | 324331             | 5040               | 17990                   |
|   | - TOTAL  | 79901              | 72149              | 5119                    |
|   | - TOTAL  | 232501             | 9631               | 200153                  |
|   | - TOTAL  | 717                | 471                | 230                     |
|   | - TOTAL  | 19993              | 7513               | 6734                    |
|   | - TOTAL  | 119889             | 25180              | 15112                   |
|   | - TOTAL  | 4981               | 1128               | 1099                    |

## G L O S S A R Y

Operating Bed. A bed that is currently set up and ready in all respects for the care of a patient. It must include supporting space, equipment and staff to operate under normal circumstances. Excluded, are nursery bassinets and transient patients' beds.

Occupied Bed. A bed assigned as of midnight to a patient, to include a patient on pass or liberty not in excess of 72 hours, and any bassinets assigned to a newborn infant whose mother has been discharged from the hospital. The definition excludes: any bed assigned to a patient subsisting out, on leave, or absent without leave, and any bed occupied by a transient patient.

Operating Bassinet. A bed designed for the care of an infant that is currently set up in the newborn nursery and ready in all respects for use. It must include support space, equipment and staff to operate under normal circumstances. Excluded are infant transporters.

Admission. An admission is the act of placing an individual under treatment or observation in a medical center or a hospital. The day of admission is the day on which the medical center or hospital makes a formal acceptance of the patient who is to be provided with room, board, and continuous nursing service in an area of the hospital where patients normally stay at least overnight. If both an admission and discharge occur on the same day, then that day is considered as a day of admission and shall be counted as one occupied bed day. The admission of a newborn is deemed to occur at the time of birth.

Outpatient Visits. Visits made to each dispensary or separate, organized clinic of a fixed medical treatment facility for medical advice, examination, diagnosis, treatment, evaluation, consultation, or counseling including visits by military patients who are excused from duty for medical reasons but who have not been admitted for inpatient care in a facility authorized beds for inpatient care and any visits made incident to complete or flight physicals.

Live Births. A live birth is the complete expulsion or extraction from its mother of a product of conception, irrespective of the duration of pregnancy which after such separation, breathes or shows any other evidence of life such as beating of the heart, pulsation of the umbilical cord, or definite movement of voluntary muscles, whether or not the umbilical cord has been cut or the placenta is attached; each such product of such a birth is considered liveborn.

**ND**