

AD-A152 893

MILITARY MANPOWER STATISTICS, JANUARY, FY-79. (U)
WASHINGTON HEADQUARTERS SERVICE (DOD) DIR FOR INFO
OP & RPTS. JAN 79. DIOR/M03-79/04

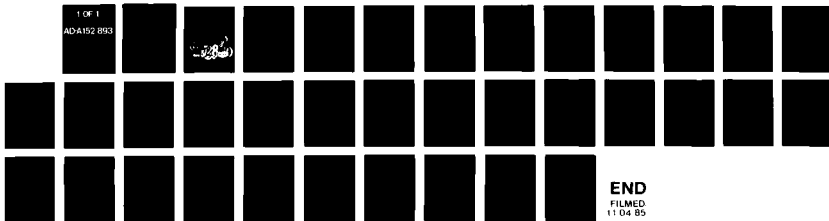
1/1

UNCLASSIFIED

F/G 5/9

N/L

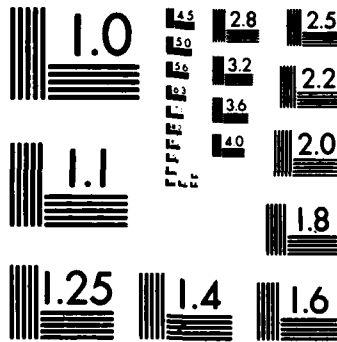
1 OF 1
ADA152 893



END
FILMED
11 04 95

1 OF 1

AD-A152 893



MICROCOPY RESOLUTION TEST CHART
NATIONAL BUREAU OF STANDARDS-1963-A

**THIS REPORT IS UNCLASSIFIED AND
ITS DISTRIBUTION IS UNLIMITED**

MILITARY MANPOWER STATISTICS

AS OF
JANUARY 1979



572834
10

DEPARTMENT OF DEFENSE
WASHINGTON HEADQUARTERS SERVICES
DIRECTORATE FOR INFORMATION
OPERATIONS AND REPORTS

TABLE P10
DEPARTMENT OF DEFENSE
MILITARY/CIVILIAN PERSONNEL

	TOTAL DOD	ARMY	NAVY	MARINE CORPS	AIR FORCE
1. ACTIVE DUTY MILITARY AS OF 31 JAN 1979					
OFFICER	271,480	96,486	61,594	18,426	94,984
ENLISTED	1,755,585	657,143	461,315	169,462	467,665
ACADEMY CADETS	12,710	4,193	4,335	-	4,182
TOTAL ACTIVE DUTY MILITARY	2,039,775	757,822	527,234	187,888	566,831
2. GUARD AND RESERVES AS OF 31 JAN 1979					
NATIONAL GUARD IN PAID STATUS	439,134	347,365	-	-	91,769
	434,359	342,787	-	-	91,572
RESERVES IN PAID STATUS	1,652,151	812,848	331,703	97,076	410,524
	352,403	184,850	81,777	32,464	53,312
TOTAL GUARD AND RESERVES IN PAID STATUS	2,091,285	1,160,213	331,703	97,076	502,293
	786,762	527,637	81,777	32,464	144,884
3. OFFICER TRAINING IN COLLEGES A/ AS OF OCTOBER 1978					
	89,170	63,279	7,872	-	18,019
4. CIVILIAN PERSONNEL - MILITARY AND CIVIL FUNCTIONS B/					
AS OF 31 JAN 1979	TOTAL DOD	ARMY	C/ NAVY	AIR FORCE	OTHER D/ DEFENSE AGENCIES
DIRECT HIRE	971,968	347,168	310,094	238,190	76,516
INDIRECT HIRE	76,215	50,733	10,755	13,432	1,295
TOTAL CIVILIAN PERSONNEL	1,048,183	397,901	320,849	251,622	77,811

A/ EXCLUDES 168,394 IN JUNIOR DIVISION, MILITARY SCHOOLS AND NATIONAL DEFENSE CADETS CORPS.
 B/ INCLUDES CIVIL FUNCTIONS EMPLOYMENT OF 32,695 ARMY AND AIR FORCE, ALSO INCLUDES DISADVANTAGED YOUTH EMPLOYEES.
 C/ INCLUDES MARINE CORPS PERSONNEL.
 D/ INCLUDES OSD/JCS.

DEPARTMENT OF DEFENSE
WASHINGTON HEADQUARTERS SERVICES
DIRECTORATE FOR INFORMATION
OPERATIONS AND REPORTS
APRIL 11, 1979

TABLE P11
DOD MANPOWER COMPARISON
(MILITARY & CIVIL FUNCTIONS)

DATE	TOTAL DOD	ARMY		AIR FORCE		NAVY AND MARINE CORPS		A/ OSD/ JCS				
		MILI- TARY	B/ CIVIL- IAN	MILI- TARY	B/ CIVIL- IAN	MILI- TARY	B/ CIVIL- IAN		TOTAL			
31 OCT 78	3,039,492	768,695	352,741	1,121,436	569,785	240,342	810,127	528,869	190,624	311,361	1,030,854	77,075
30 NOV 78	3,031,627	764,299	351,565	1,115,864	568,999	240,455	809,454	527,958	189,101	312,072	1,029,131	77,178
31 DEC 78	3,018,694	756,645	350,396	1,107,041	567,003	239,622	806,625	529,178	187,928	310,951	1,029,057	76,961
31 JAN 79	3,011,743	757,822	347,168	1,104,990	566,831	238,190	805,021	527,234	187,888	310,094	1,025,216	76,516

A/ CIVILIAN PERSONNEL. MILITARY PERSONNEL ASSIGNED TO OSD, OJCS AND OTHER
DEFENSE ACTIVITIES ARE REPORTED BY THEIR RESPECTIVE SERVICES.

B/ -TOTAL PAID EMPLOYEES- AS REPORTED OFFICIALLY TO THE CIVIL SERVICE COMMISSION;
EXCLUDES OVERSEAS SUPPORT PERSONNEL (INDIRECT HIRE).

DEPARTMENT OF DEFENSE
WASHINGTON HEADQUARTERS SERVICES
DIRECTORATE FOR INFORMATION
OPERATIONS AND REPORTS
APRIL 5, 1979

TABLE P22.1

DEPARTMENT OF DEFENSE
TOTAL ACTIVE DUTY MILITARY PERSONNEL BY SERVICE

DATE	TOTAL DOD	ARMY	NAVY	MARINE CORPS	AIR FORCE
OCT 31, 1978	2,057,973	768,695	528,869	190,624	569,785
NOV 30, 1978	2,050,357	764,299	527,958	189,101	568,999
DEC 31, 1978	2,040,754	756,645	529,178	187,928	567,003
JAN 31, 1979	2,039,775	757,822	527,234	187,888	566,831

DEPARTMENT OF DEFENSE
WASHINGTON HEADQUARTERS SERVICES
DIRECTORATE FOR INFORMATION
OPERATIONS AND REPORTS
APRIL 5, 1979

TABLE P23.1

DEPARTMENT OF DEFENSE
ACTIVE DUTY OFFICER PERSONNEL AND PERCENT OF TOTAL MILITARY PERSONNEL, BY SERVICE

DATE	TOTAL DOD		ARMY		NAVY		MARINE CORPS		AIR FORCE	
	NUMBER	%	NUMBER	%	NUMBER	%	NUMBER	%	NUMBER	%
OCT 31, 1976	273,464	13.3	97,277	12.7	62,331	11.8	18,411	9.7	95,445	16.8
NOV 30, 1976	272,530	13.3	96,788	12.7	62,069	11.8	18,404	9.7	95,269	16.7
DEC 31, 1976	272,181	13.3	96,461	12.7	62,375	11.8	18,307	9.7	95,038	16.8
JAN 31, 1979	271,480	13.3	96,486	12.7	61,584	11.7	18,426	9.8	94,984	16.8

DEPARTMENT OF DEFENSE
WASHINGTON HEADQUARTERS SERVICES
DIRECTORATE FOR INFORMATION
OPERATIONS AND REPORTS
APRIL 5, 1979

TABLE P23.3

DEPARTMENT OF DEFENSE
TOTAL ACTIVE DUTY MILITARY PERSONNEL BY TYPE

DATE	OFFICERS	ENLISTED	A/ OFFICER CANDIDATES	TOTAL
OCT 31, 1976	273,464	1,771,491	13,018	2,057,973
NOV 30, 1976	272,530	1,764,887	12,940	2,050,357
DEC 31, 1976	272,181	1,755,712	12,861	2,040,754
JAN 31, 1979	271,480	1,755,585	12,710	2,039,775

A/ CONSISTS OF THE FOLLOWING:
FOR ARMY - CADETS, U. S. MILITARY ACADEMY
FOR NAVY - MIDSHPMEN, U. S. NAVAL ACADEMY
FOR AIR FORCE - CADETS, U. S. AIR FORCE ACADEMY

DEPARTMENT OF DEFENSE
WASHINGTON HEADQUARTERS SERVICES
DIRECTORATE FOR INFORMATION
OPERATIONS AND REPORTS
APRIL 5, 1979

TABLE P23.4
 DEPARTMENT OF DEFENSE
 ARMY ACTIVE DUTY MILITARY PERSONNEL BY TYPE

DATE	OFFICERS	ENLISTED	U.S. MILITARY ACADEMY	CADETS	TOTAL
OCT 31, 1978	97,277	667,155	4,263		768,695
NOV 30, 1978	96,788	663,301	4,210		764,299
DEC 31, 1978	96,461	655,979	4,205		756,645
JAN 31, 1979	96,486	657,143	4,193		757,822

DEPARTMENT OF DEFENSE
 WASHINGTON HEADQUARTERS SERVICES
 DIRECTORATE FOR INFORMATION
 OPERATIONS AND REPORTS
 APRIL 5, 1979

TABLE P23.41

DEPARTMENT OF DEFENSE
ARMY ACTIVE DUTY MILITARY PERSONNEL

REPORTED STRENGTH, AND ADJUSTMENTS TO REPORTED STRENGTH TO DERIVE "DIRECT PROGRAM STRENGTH" CHARGEABLE TO APPROPRIATION "MILITARY PERSONNEL, ARMY"

DATE	REPORTED STRENGTH		(LESS) CIVIL FUNCTIONS		TOTAL PROGRAM STRENGTH		(LESS) REIMBURSABLES		TOTAL	DIRECT PROGRAM STRENGTH CHARGEABLE TO APPROPRIATION "MILITARY PERSONNEL, ARMY"		CADETS USMA	
	TOTAL	OFF	ENL	OFF	ENL	OFF	ENL	OFFICER		ENLISTED	OFFICER	ENLISTED	
31 OCT 1978	768,695	487	2	645	352	768,206	645	352	767,209	96,145	666,801	4,263	
30 NOV 1978	764,299	494	2	626	340	763,803	626	340	762,837	95,668	662,959	4,210	
31 DEC 1978	756,645	496	2	620	356	756,147	620	356	755,171	95,345	655,621	4,205	
31 JAN 1979	757,822	498	2	603	311	757,322	603	311	756,408	95,385	656,630	4,193	

DEPARTMENT OF DEFENSE
WASHINGTON HEADQUARTERS SERVICES
DIRECTORATE FOR INFORMATION
OPERATIONS AND REPORTS
APRIL 5, 1979

TABLE P23.5

DEPARTMENT OF DEFENSE
NAVY ACTIVE DUTY MILITARY PERSONNEL BY TYPE

DATE	OFFICERS	ENLISTED	MIDSHIPMEN U.S. NAVAL ACADEMY	TOTAL
OCT 31, 1978	62,331	462,151	4,387	528,869
NOV 30, 1978	62,069	461,514	4,375	527,958
DEC 31, 1978	62,375	462,431	4,372	529,178
JAN 31, 1979	61,584	461,315	4,335	527,234

DEPARTMENT OF DEFENSE
WASHINGTON HEADQUARTERS SERVICES
DIRECTORATE FOR INFORMATION
OPERATIONS AND REPORTS
APRIL 5, 1979

TABLE P23.51

DEPARTMENT OF DEFENSE
NAVY ACTIVE DUTY MILITARY PERSONNEL

REPORTED STRENGTH, AND ADJUSTMENTS TO REPORTED STRENGTH TO DERIVE "DIRECT PROGRAM STRENGTH" CHARGEABLE TO APPROPRIATION "MILITARY PERSONNEL, NAVY"

DATE	REPORTED STRENGTH	(LESS) PAID FROM A/ RES PERS APPN	TOTAL PROGRAM STRENGTH	(LESS) REIMBURSABLES	TOTAL	OFFICER	ENLISTED	TOTAL	OFFICER	ENLISTED	OFFICER CANDIDATES
31 OCT 1978	528,869	198	528,671	461	528,210	61,672	466,538	526,683	61,672	460,624	4,387
30 NOV 1978	527,958	201	527,757	467	527,290	61,401	465,889	525,719	61,401	459,943	4,375
31 DEC 1978	529,178	203	528,975	470	528,505	61,702	466,803	527,061	61,702	460,967	4,372
31 JAN 1979	527,234	203	527,031	459	526,572	60,922	465,650	525,024	60,922	459,767	4,335

A/ NAVAL RESERVE PERSONNEL ON ACTIVE DUTY UNDER PROVISIONS OF SEC. 265, TITLE 10, U.S. CODE PAID FROM THE NAVAL RESERVE PERSONNEL APPROPRIATION.

DEPARTMENT OF DEFENSE
WASHINGTON HEADQUARTERS SERVICES
DIRECTORATE FOR INFORMATION
OPERATIONS AND REPORTS
APRIL 5, 1979

TABLE P23.6

DEPARTMENT OF DEFENSE
MARINE CORPS ACTIVE DUTY MILITARY PERSONNEL BY TYPE

DATE	OFFICERS	ENLISTED	TOTAL
OCT 31, 1978	18,411	172,213	190,624
NOV 30, 1978	18,404	170,697	189,101
DEC 31, 1978	18,307	169,621	187,928
JAN 31, 1979	18,426	169,462	187,888

DEPARTMENT OF DEFENSE
WASHINGTON HEADQUARTERS SERVICES
DIRECTORATE FOR INFORMATION
OPERATIONS AND REPORTS
APRIL 5, 1979

TABLE P23.61

DEPARTMENT OF DEFENSE
MARINE CORPS ACTIVE DUTY MILITARY PERSONNEL

REPORTED STRENGTH, AND ADJUSTMENTS TO REPORTED STRENGTH TO DERIVE "DIRECT PROGRAM STRENGTH" CHARGEABLE TO APPROPRIATION "MILITARY PERSONNEL, MARINE CORPS"

DATE	REPORTED STRENGTH	(LESS) PAID FROM A/ RES PERS APPN	TOTAL PROGRAM STRENGTH	REIMBURSABLES (LESS)	OFFICER ENLISTED	TOTAL	OFFICER ENLISTED	ENLISTED	OFFICER CANDIDATES
31 OCT 1976	190,624	62	190,562	20	1	190,541	18,329	172,212	-
30 NOV 1976	189,101	65	189,036	20	1	189,015	18,319	170,696	-
31 DEC 1976	187,928	65	187,863	21	1	187,841	18,221	169,620	-
31 JAN 1979	187,888	66	187,822	21	1	187,800	18,339	169,461	-

A/ MARINE CORPS RESERVE PERSONNEL ON ACTIVE DUTY UNDER PROVISIONS OF SEC. 265, TITLE 10, U.S. CODE PAID FROM THE MARINE CORPS RESERVE PERSONNEL APPROPRIATION.

DEPARTMENT OF DEFENSE
WASHINGTON HEADQUARTERS SERVICES
DIRECTORATE FOR INFORMATION
OPERATIONS AND REPORTS
APRIL 5, 1979

TABLE P23.7
 DEPARTMENT OF DEFENSE
 AIR FORCE ACTIVE DUTY MILITARY PERSONNEL BY TYPE

DATE	OFFICERS	ENLISTED	CADETS U.S.A.F. ACADEMY	TOTAL
OCT 31, 1978	95,445	469,972	4,368	569,785
NOV 30, 1978	95,269	469,375	4,355	568,999
DEC 31, 1978	95,038	467,691	4,284	567,003
JAN 31, 1979	94,984	467,665	4,182	566,831

DEPARTMENT OF DEFENSE
 WASHINGTON HEADQUARTERS SERVICES
 DIRECTORATE FOR INFORMATION
 OPERATIONS AND REPORTS
 APRIL 5, 1979

TABLE P23.71

DEPARTMENT OF DEFENSE
AIR FORCE ACTIVE DUTY MILITARY PERSONNEL

REPORTED STRENGTH, AND ADJUSTMENTS TO REPORTED STRENGTH TO DERIVE "DIRECT PROGRAM STRENGTH" CHARGEABLE TO APPROPRIATION "MILITARY PERSONNEL, AIR FORCE"

DATE	REPORTED STRENGTH	(LESS) ANG/AFR	TOTAL PROGRAM STRENGTH	(LESS) REIMBURSABLES	TOTAL	OFFICER	ENLISTED	TOTAL	OFFICER	ENLISTED	USAF & AVCADS
31 OCT 1978	569,785	224	569,561		569,561						
30 NOV 1978	568,999	225	568,774		568,774						
31 DEC 1978	567,003	221	566,782		566,782						
31 JAN 1979	566,831	224	566,607		566,607						

DEPARTMENT OF DEFENSE
WASHINGTON HEADQUARTERS SERVICES
DIRECTORATE FOR INFORMATION
OPERATIONS AND REPORTS
APRIL 5, 1979

TABLE P25.6

DEPARTMENT OF DEFENSE
WOMEN MILITARY PERSONNEL ON ACTIVE DUTY, OFFICERS, AND ENLISTED BY SERVICE

DATE	TOTAL DOD		ARMY		NAVY		MARINE CORPS		AIR FORCE	
	TOTAL	OFF	TOTAL	OFF	TOTAL	OFF	TOTAL	OFF	TOTAL	OFF
31 OCT 78	135,444	16,877	57,090	6,348	25,673	4,032	5,143	429	47,538	6,068
30 NOV 78	136,417	16,931	57,035	6,323	25,697	4,036	5,156	443	48,329	6,129
31 DEC 78	136,702	16,965	56,358	6,299	26,351	4,092	5,138	443	48,555	6,131
31 JAN 79	137,987	17,079	56,857	6,340	26,545	4,050	5,306	447	49,279	6,242
			118,567	50,742	21,641	4,714	4,713	4,713	41,470	
			119,486	50,712	21,861	4,695	4,695	4,695	42,200	
			119,737	50,059	22,259	4,859	4,859	4,859	42,724	
			120,908	50,517	22,495	4,859	4,859	4,859	43,037	

DEPARTMENT OF DEFENSE
WASHINGTON HEADQUARTERS SERVICES
DIRECTORATE FOR INFORMATION
OPERATIONS AND REPORTS
APRIL 5, 1979

TABLE P26.0

DEPARTMENT OF DEFENSE
MILITARY PERSONNEL ON ACTIVE DUTY BY GRADE IN WHICH SERVING A/
JANUARY 31, 1979

RANK/GRADE	TOTAL DOD	ARMY	NAVY	MARINE CORPS	AIR FORCE
GENERAL OF ARMY - FLEET ADMIRAL	1	1	-	-	-
GENERAL - ADMIRAL	33	10	6	2	13
LT GENERAL - VICE ADMIRAL	112	36	31	7	38
MAJ GENERAL - REAR ADMIRAL (U)	406	167	91	23	125
BRIG GENERAL - REAR ADMIRAL (L)	547	200	131	34	182
COLONEL - CAPTAIN	13,706	4,431	3,620	592	5,063
LIEUTENANT COL - COMMANDER	32,600	11,022	7,594	1,438	12,546
MAJOR - LT COMMANDER	49,719	16,239	12,055	3,008	18,417
CAPTAIN - LIEUTENANT	89,772	28,071	17,272	4,784	39,645
1ST LIEUTENANT - LIEUTENANT (JG)	33,159	10,633	9,018	4,238	9,270
2ND LIEUTENANT - ENSIGN	34,056	12,417	8,908	3,048	9,683
CHIEF WARRANT OFFICER W-4	2,193	1,347	652	192	2
CHIEF WARRANT OFFICER W-3	4,431	3,844	495	92	-
CHIEF WARRANT OFFICER W-2	7,385	5,095	1,677	613	-
WARRANT OFFICER W-1	3,360	2,973	32	355	-
TOTAL OFFICERS	271,480	96,486	61,584	18,426	94,984
E-9	13,084	3,735	3,534	1,257	4,558
E-8	33,804	12,794	8,659	3,322	9,029
E-7	117,605	45,237	30,605	8,672	33,091
E-6	203,377	73,049	64,831	13,520	51,977
E-5	321,063	116,865	82,804	22,515	98,879
E-4	413,488	184,851	94,712	27,348	106,577
E-3	343,911	102,483	90,708	47,099	103,621
E-2	156,996	53,398	48,117	26,030	29,451
E-1	152,257	64,731	37,345	19,699	30,482
TOTAL ENLISTED	1,755,585	657,143	461,315	169,462	467,665
CADETS & MIDSHIPMEN	12,710	4,193	4,395	-	4,182
GRAND TOTAL	2,039,775	757,822	527,234	187,888	566,831

A/ INCLUDES REIMBURSABLE ACTIVE DUTY MILITARY PAY STRENGTHS AND ACTIVE DUTY MILITARY PERSONNEL PAID FROM CIVIL FUNCTIONS, RESERVE, AND NATIONAL GUARD APPROPRIATIONS.

DEPARTMENT OF DEFENSE
WASHINGTON HEADQUARTERS SERVICES
DIRECTORATE FOR INFORMATION OPERATIONS AND REPORTS
APRIL 5, 1979

TABLE P26.04

DEPARTMENT OF DEFENSE
MILITARY PERSONNEL ON ACTIVE DUTY BY GRADE IN WHICH SERVING

REGULAR A/

JANUARY 31, 1979

RANK/GRADE	TOTAL DOD	ARMY	NAVY	MARINE CORPS	AIR FORCE
GENERAL OF ARMY - FLEET ADMIRAL	1	1	-	-	-
GENERAL - ADMIRAL	33	10	8	2	13
LT GENERAL - VICE ADMIRAL	112	36	31	7	38
MAJ GENERAL - REAR ADMIRAL (U)	399	163	89	23	124
BRIG GENERAL - REAR ADMIRAL (L)	543	199	129	33	182
COLONEL - CAPTAIN	13,233	4,234	3,454	561	4,984
LIEUTENANT COL - COMMANDER	29,587	9,280	7,124	1,416	11,767
MAJOR - LT COMMANDER	37,721	9,883	10,304	2,874	14,660
CAPTAIN - LIEUTENANT	50,288	12,065	12,755	4,036	21,432
1ST LIEUTENANT - LIEUTENANT (JG)	12,968	3,916	5,355	2,035	1,662
2ND LIEUTENANT - ENSIGN	11,280	4,021	4,594	877	1,788
CHIEF WARRANT OFFICER W-4	1,642	803	649	188	2
CHIEF WARRANT OFFICER W-3	2,073	1,496	490	87	-
CHIEF WARRANT OFFICER W-2	2,962	676	1,676	610	-
WARRANT OFFICER W-1	393	6	32	355	-
TOTAL OFFICERS	163,235	46,789	46,690	13,104	56,652
E-9	12,946	3,735	3,401	1,255	4,555
E-8	33,460	12,793	8,327	3,314	9,026
E-7	116,337	45,228	29,388	8,638	33,083
E-6	200,225	73,042	61,740	13,472	51,971
E-5	316,785	116,855	78,593	22,474	98,863
E-4	407,434	184,567	89,004	27,336	106,527
E-3	330,856	101,201	79,059	47,097	103,499
E-2	144,516	51,661	37,689	26,029	29,137
E-1	143,327	64,347	28,828	19,697	30,455
TOTAL ENLISTED	1,705,886	653,429	416,029	189,312	467,116
REGULAR TOTAL	1,869,121	700,218	462,719	182,416	523,768

A/ REGULAR PLUS RETIRED REGULAR OFFICERS ON ACTIVE DUTY.

DEPARTMENT OF DEFENSE
WASHINGTON HEADQUARTERS SERVICES
DIRECTORATE FOR INFORMATION OPERATIONS AND REPORTS
APRIL 5, 1979

TABLE P26.05
DEPARTMENT OF DEFENSE
MILITARY PERSONNEL ON ACTIVE DUTY BY GRADE IN WHICH SERVING

RESERVE A/

JANUARY 31, 1979

RANK/GRADE	ARMY	NAVY	MARINE CORPS	AIR FORCE	TOTAL DOD
GENERAL OF ARMY - FLEET ADMIRAL	-	-	-	-	-
GENERAL - ADMIRAL	-	-	-	-	-
LT GENERAL - VICE ADMIRAL	-	-	-	-	-
MAJ GENERAL - REAR ADMIRAL (U)	4	2	-	1	7
BRIG GENERAL - REAR ADMIRAL (L)	1	2	1	-	4
COLONEL - CAPTAIN	197	166	31	79	473
LIEUTENANT COL - COMMANDER	1,742	470	22	779	3,013
MAJOR - LT COMMANDER	6,356	1,751	134	3,757	11,998
CAPTAIN - LIEUTENANT	16,006	4,517	748	18,213	39,484
1ST LIEUTENANT - LIEUTENANT (JG)	6,717	3,663	2,203	7,608	20,191
2ND LIEUTENANT - ENSIGN	8,396	4,314	2,171	7,895	22,776
CHIEF WARRANT OFFICER W-4	544	3	4	-	551
CHIEF WARRANT OFFICER W-3	2,348	5	5	-	2,358
CHIEF WARRANT OFFICER W-2	4,419	1	3	-	4,423
WARRANT OFFICER W-1	2,967	-	-	-	2,967
TOTAL OFFICERS	49,697	14,894	5,322	38,332	108,245
E-9	-	133	2	3	138
E-8	1	332	8	3	344
E-7	9	1,217	34	6	1,268
E-6	7	3,091	48	6	3,152
E-5	10	4,211	41	16	4,278
E-4	284	5,708	12	50	6,054
E-3	1,282	11,649	2	122	13,055
E-2	1,737	10,428	1	314	12,480
E-1	384	8,517	2	27	8,930
TOTAL ENLISTED	3,714	45,286	150	549	49,699
RESERVE TOTAL	53,411	60,180	5,472	38,881	157,944

A/ INCLUDES RESERVE, NATIONAL GUARD, AUS, AND AFUS OFFICERS ON ACTIVE DUTY.

DEPARTMENT OF DEFENSE
WASHINGTON HEADQUARTERS SERVICES
DIRECTORATE FOR INFORMATION OPERATIONS AND REPORTS
APRIL 5, 1979

TABLE P27.1

DEPARTMENT OF DEFENSE
SUMMARY OF ENLISTED PERSONNEL PROCUREMENT
FISCAL YEAR 1979

	OCT 1978	NOV 1978	DEC 1978	JAN 1979	FEB 1979	MAR 1979
TOTAL DEPARTMENT OF DEFENSE	38,345	35,199	30,284	43,605		
INDUCTIONS						
FIRST ENLISTMENTS	22,921	19,673	15,560	26,188		
IMMEDIATE REENLISTMENTS	11,931	12,232	12,476	12,950		
OTHER REENLISTMENTS	1,441	1,475	947	1,867		
RESERVES TO ACTIVE DUTY A/	2,052	1,819	1,301	2,600		
ARMY	16,329	15,040	11,605	19,564		
INDUCTIONS						
FIRST ENLISTMENTS	9,303	7,795	4,721	10,923		
IMMEDIATE REENLISTMENTS	5,528	5,886	6,068	6,889		
OTHER REENLISTMENTS	951	974	530	1,263		
RESERVES TO ACTIVE DUTY	547	385	286	489		
NAVY	8,676	7,581	6,972	10,075		
INDUCTIONS						
FIRST ENLISTMENTS	5,090	4,164	4,015	5,770		
IMMEDIATE REENLISTMENTS	1,867	1,756	1,722	1,884		
OTHER REENLISTMENTS	306	290	265	394		
RESERVES TO ACTIVE DUTY	1,413	1,371	970	2,027		
MARINE CORPS	4,292	3,517	3,004	4,771		
INDUCTIONS						
FIRST ENLISTMENTS	3,179	2,465	2,023	3,653		
IMMEDIATE REENLISTMENTS	906	872	848	913		
OTHER REENLISTMENTS	115	118	88	123		
RESERVES TO ACTIVE DUTY	92	62	45	82		
AIR FORCE	9,043	9,061	8,703	9,195		
INDUCTIONS						
FIRST ENLISTMENTS	5,349	5,249	4,801	5,842		
IMMEDIATE REENLISTMENTS	3,630	3,718	3,838	3,264		
OTHER REENLISTMENTS	69	93	64	87		
RESERVES TO ACTIVE DUTY	-	1	-	2		

A/ INCLUDES NATIONAL GUARD.

DEPARTMENT OF DEFENSE
WASHINGTON HEADQUARTERS SERVICES
DIRECTORATE FOR INFORMATION
OPERATIONS AND REPORTS
APRIL 5, 1979

TABLE P27.21

DEPARTMENT OF DEFENSE
ARMY ENLISTED PERSONNEL PROCUREMENT
FISCAL YEAR 1979

	OCT 1978	NOV 1978	DEC 1978	JAN 1979	FEB 1979	MAR 1979
TOTAL	16,329	15,040	11,605	19,564		
REGULAR ENL. AND REENL. - TOTAL	15,782	14,655	11,319	19,075		
FIRST ENLISTMENTS	9,303	7,795	4,721	10,923		
REENLISTMENTS - TOTAL	6,479	6,860	6,598	8,152		
IMMEDIATE REENLISTMENTS	5,528	5,886	6,068	6,889		
FORMER REGULAR	5,495	5,851	6,035	6,848		
FORMER RESERVE & N.G.	33	35	33	41		
FORMER INDUCTEE	-	-	-	-		
REENL. OTHER THAN IMMEDIATE	951	974	530	1,263		
WITHIN 2-90 DAYS AFTER SEPARATION	99	126	94	143		
FORMER REGULAR	55	71	52	68		
FORMER RESERVE & N.G.	42	54	40	74		
FORMER INDUCTEE	-	-	-	-		
FORMER OFFICER	2	1	2	1		
OVER 90 DAYS AFTER SEPARATION	852	848	436	1,120		
INDUCTIONS	-	-	-	-		
RESERVES AND N.G. CALLS	547	385	286	489		

DEPARTMENT OF DEFENSE
WASHINGTON HEADQUARTERS SERVICES
DIRECTORATE FOR INFORMATION
OPERATIONS AND REPORTS
APRIL 5, 1979

TABLE P27.22

DEPARTMENT OF DEFENSE
NAVY ENLISTED PERSONNEL PROCUREMENT
FISCAL YEAR 1979

	OCT 1978	NOV 1978	DEC 1978	JAN 1979	FEB 1979	MAR 1979
TOTAL	8,676	7,581	6,972	10,075		
REGULAR ENL. AND REENL. - TOTAL	7,263	6,210	6,002	8,048		
FIRST ENLISTMENTS	5,090	4,164	4,015	5,770		
REENLISTMENTS - TOTAL	2,173	2,046	1,987	2,278		
IMMEDIATE REENLISTMENTS	1,867	1,756	1,722	1,884		
FORMER REGULAR	1,804	1,693	1,666	1,813		
FORMER RESERVE	63	73	56	71		
REENL. OTHER THAN IMMEDIATE	306	290	265	394		
WITHIN 2-90 DAYS AFTER SEPARATION	58	65	65	61		
FORMER REGULAR	58	65	65	61		
FORMER RESERVE	-	-	-	-		
OVER 90 DAYS AFTER SEPARATION	248	225	200	333		
INDUCTIONS	-	-	-	-		
RESERVES TO ACTIVE DUTY	1,413	1,371	970	2,027		
FIRST ENLISTMENTS	177	206	158	328		
REENLISTMENTS	96	98	74	70		
REPORTED TO ACTIVE DUTY	1,140	1,067	738	1,629		

DEPARTMENT OF DEFENSE
WASHINGTON HEADQUARTERS SERVICES
DIRECTORATE FOR INFORMATION
OPERATIONS AND REPORTS
APRIL 5, 1979

TABLE P27.23

DEPARTMENT OF DEFENSE
MARINE CORPS ENLISTED PERSONNEL PROCUREMENT
FISCAL YEAR 1979

	OCT 1978	NOV 1978	DEC 1978	JAN 1979	FEB 1979	MAR 1979
TOTAL	4,292	3,517	3,004	4,771		
REGULAR ENL. AND REENL. - TOTAL	4,200	3,455	2,959	4,689		
FIRST ENLISTMENTS	3,179	2,465	2,023	3,653		
REENLISTMENTS - TOTAL	1,021	990	936	1,036		
IMMEDIATE REENLISTMENTS	906	872	848	913		
FORMER REGULAR A/ FORMER RESERVE	904	872	845	909		
FORMER INDUCTEE	2	-	3	4		
REENL. OTHER THAN IMMEDIATE	115	118	88	123		
WITHIN 2-90 DAYS AFTER SEPARATION	-	-	-	1		
FORMER REGULAR	-	-	-	1		
FORMER RESERVE	-	-	-	-		
FORMER INDUCTEE	-	-	-	-		
OVER 90 DAYS AFTER SEPARATION B/	115	118	88	122		
INDUCTIONS	-	-	-	-		
RESERVES TO ACTIVE DUTY	92	62	45	82		
FIRST ENLISTMENTS REENLISTMENTS REPORTED TO ACTIVE DUTY	1 91	1 61	1 44	- 82		

A/ INCLUDES EXTENSIONS FOR WHICH REENLISTMENT BONUS IS PAID.
B/ INCLUDES ENLISTMENTS OF FORMER OFFICERS.

DEPARTMENT OF DEFENSE
WASHINGTON HEADQUARTERS SERVICES
DIRECTORATE FOR INFORMATION
OPERATIONS AND REPORTS
APRIL 5, 1979

TABLE P27.24
 DEPARTMENT OF DEFENSE
 AIR FORCE ENLISTED PERSONNEL PROCUREMENT
 FISCAL YEAR 1979

	OCT 1978	NOV 1978	DEC 1978	JAN 1979	FEB 1979	MAR 1979
TOTAL	9,048	9,061	8,703	9,195		
REGULAR ENL. AND REENL. - TOTAL	9,048	9,060	8,703	9,193		
FIRST ENLISTMENTS	5,349	5,249	4,801	5,842		
REENLISTMENTS - TOTAL	3,699	3,811	3,902	3,351		
IMMEDIATE REENLISTMENTS	3,630	3,718	3,838	3,264		
FORMER REGULAR FORMER RESERVE & N.G.	3,630	3,715	3,836	3,264		
REENL. OTHER THAN IMMEDIATE	69	93	64	87		
WITHIN 2-90 DAYS AFTER SEPARATION	-	-	-	-		
FORMER REGULAR FORMER RESERVE & N.G.	-	-	-	-		
OVER 90 DAYS AFTER SEPARATION A/	69	93	64	87		
INDUCTIONS	-	-	-	-		
RESERVES & N.G. TO ACTIVE DUTY	-	1	-	2		

A/ INCLUDES ENLISTMENTS OF FORMER COMMISSIONED AND WARRANT OFFICERS.

DEPARTMENT OF DEFENSE
 WASHINGTON HEADQUARTERS SERVICES
 DIRECTORATE FOR INFORMATION
 OPERATIONS AND REPORTS
 APRIL 5, 1979

TABLE R11.0
 DEPARTMENT OF DEFENSE
 RESERVE COMPONENT STRENGTH SUMMARY

JANUARY 31, 1979

TYPE OF DUTY	TOTAL	OFFICER	ENLISTED A/
TOTAL	2,249,519	790,264	1,459,255
ON ACTIVE DUTY	158,234	108,535	49,699
NOT ON ACTIVE DUTY	2,091,285	681,729	1,409,556

A/ INCLUDES OFFICER CANDIDATES.

RESERVES BY RESERVE CATEGORY

TYPE OF DUTY	TOTAL	OFFICER	ENLISTED A/
TOTAL	2,249,519	790,264	1,459,255
READY RESERVE	1,309,369	298,929	1,010,440
ON ACTIVE DUTY	158,234	108,535	49,699
NOT ON ACTIVE DUTY	1,151,135	190,394	960,741
ACTIVE STATUS	1,148,994	189,830	959,164
INACTIVE STATUS B/	2,141	564	1,577
STANDBY RESERVE	144,227	96,725	47,502
ON ACTIVE STATUS	67,575	22,333	45,242
INACTIVE STATUS	76,652	74,392	2,260
RETIRED - RETIRED STATUS	795,923	394,610	401,313

A/ INCLUDES OFFICER CANDIDATES.

B/ INACTIVE NATIONAL GUARD AND REP'S IN NON-PAY STATUS.

RESERVES IN "PAID STATUS"

PAY GROUP	TOTAL	OFFICER	ENLISTED
A, B, C, F, M, P	786,762	113,646	673,116
A, B, C, M, P	764,610	113,646	650,964
F	22,152	-	22,152
INITIAL ACTIVE DUTY TRAINING			

DEPARTMENT OF DEFENSE
 WASHINGTON HEADQUARTERS SERVICES
 DIRECTORATE FOR INFORMATION
 OPERATIONS AND REPORTS
 APRIL 11, 1979

TABLE R12.0

DEPARTMENT OF DEFENSE
RESERVE STRENGTH - OFFICER AND ENLISTED

DATE	TOTAL		OFFICERS		ENLISTED A/		TOTAL ENLISTED	ON ACTIVE DUTY	NOT ON ACTIVE DUTY	TOTAL ENLISTED	ON ACTIVE DUTY	NOT ON ACTIVE DUTY
	ON ACTIVE DUTY	NOT ON ACTIVE DUTY	TOTAL OFFICERS	ON ACTIVE DUTY	NOT ON ACTIVE DUTY	TOTAL ENLISTED						
31 OCT 1978	158,674	2,264,317	789,375	109,167	680,208	1,474,942	49,507	1,425,435		1,474,942	49,507	1,425,435
30 NOV 1978	158,346	2,257,611	789,143	109,018	680,125	1,468,468	49,328	1,419,140		1,468,468	49,328	1,419,140
31 DEC 1978	157,997	2,255,408	787,709	108,485	679,224	1,467,699	49,512	1,418,187		1,467,699	49,512	1,418,187
31 JAN 1979	158,234	2,249,519	790,264	108,535	681,729	1,459,255	49,699	1,409,556		1,459,255	49,699	1,409,556

A/ INCLUDES OFFICER CANDIDATES.

DEPARTMENT OF DEFENSE
WASHINGTON HEADQUARTERS SERVICES
DIRECTORATE FOR INFORMATION
OPERATIONS AND REPORTS
APRIL 11, 1979

TABLE R13.0

DEPARTMENT OF DEFENSE
READY RESERVE STRENGTH COMPARED TO STATUTORY LIMITATION

JANUARY 31, 1979

	TOTAL	ON ACTIVE DUTY	NOT ON ACTIVE DUTY
STATUTORY READY RESERVE LIMITATION A/	2,900,000		
UNFILLED SPACES	1,571,256		
READY RESERVE STRENGTH	1,328,744	159,088	1,169,656
COAST GUARD RESERVE	19,375	854	18,521
DOD RESERVE	1,309,369	158,234	1,151,135
ARMY	768,808	53,411	715,397
NATIONAL GUARD B/ ARMY RESERVE	348,873 419,935	1,508 51,903	347,365 368,032
NAVAL RESERVE	229,853	60,180	169,673
MARINE CORPS RESERVE	83,921	5,538	78,383
AIR FORCE	226,787	39,105	187,682
AIR NATIONAL GUARD C/ AIR FORCE RESERVE	92,083 134,704	314 38,791	91,769 95,913

A/ SECTION 205(B), ARMED FORCES RESERVE ACT OF 1952, AS AMENDED.
B/ INCLUDES "INACTIVE NATIONAL GUARD" NUMBERING 2,141 AND REP'S NUMBERING 2,437.
C/ INCLUDES REP'S IN A NON-PAY STATUS NUMBERING 197.

DEPARTMENT OF DEFENSE
WASHINGTON HEADQUARTERS SERVICES
DIRECTORATE FOR INFORMATION
OPERATIONS AND REPORTS
APRIL 11, 1979

TABLE R14.0
 DEPARTMENT OF DEFENSE
 RESERVE COMPONENT PERSONNEL BY RESERVE CATEGORY

DATE	TOTAL	READY				STANDBY	RETIRED
		TOTAL READY	ON ACTIVE DUTY	NOT ON ACTIVE DUTY			
31 OCT 1978	2,264,317	1,304,325	158,674	1,145,651	168,144	791,848	
30 NOV 1978	2,257,611	1,305,898	156,346	1,147,552	157,931	793,782	
31 DEC 1978	2,255,408	1,309,250	157,997	1,151,253	152,595	793,563	
31 JAN 1979	2,249,519	1,309,369	158,234	1,151,135	144,227	795,923	

TABLE R14.0

DEPARTMENT OF DEFENSE
RESERVE COMPONENT PERSONNEL BY RESERVE CATEGORY

OFFICERS

DATE	TOTAL	READY			STANDBY	RETIRED
		TOTAL READY	ON ACTIVE DUTY	NOT ON ACTIVE DUTY		
31 OCT 1978	789,375	300,644	109,167	191,477	95,981	392,750
30 NOV 1978	789,143	300,917	109,018	191,899	95,173	393,053
31 DEC 1978	787,709	298,301	108,485	189,816	96,841	392,567
31 JAN 1979	790,264	298,929	108,535	190,394	96,725	394,610

TABLE R14.0
 DEPARTMENT OF DEFENSE
 RESERVE COMPONENT PERSONNEL BY RESERVE CATEGORY
 ENLISTED A/

DATE	TOTAL	READY			STANDBY	RETIRED
		TOTAL READY	ON DUTY	NOT ON ACTIVE DUTY		
31 OCT 1978	1,474,942	1,003,681	49,507	954,174	72,163	399,098
30 NOV 1978	1,468,468	1,004,981	49,328	955,653	62,758	400,729
31 DEC 1978	1,467,699	1,010,949	49,512	961,437	55,754	400,996
31 JAN 1979	1,459,255	1,010,440	49,699	960,741	47,502	401,313

A/ INCLUDES OFFICER CANDIDATES.

TABLE R18.0

DEPARTMENT OF DEFENSE
RESERVE COMPONENT PERSONNEL IN "PAID STATUS"

DATE	TOTAL	DRILL PAY STATUS	INITIAL ACTIVE DUTY TRAINING
31 OCT 1978	786,866	762,851	24,015
30 NOV 1978	786,360	762,164	24,196
31 DEC 1978	785,852	764,005	21,847
31 JAN 1979	786,762	764,610	22,152

DEPARTMENT OF DEFENSE
WASHINGTON HEADQUARTERS SERVICES
DIRECTORATE FOR INFORMATION
OPERATIONS AND REPORTS
APRIL 11, 1979

TABLE R21.0
 DEPARTMENT OF DEFENSE
 RESERVE COMPONENT PERSONNEL ON ACTIVE DUTY BY COMPONENT
 JANUARY 31, 1979

COMPONENT/PERSONNEL	TOTAL	OFFICER	ENLISTED A/
TOTAL DEPARTMENT OF DEFENSE	158,234	108,535	49,699
ARMY - TOTAL	53,411	49,697	3,714
NATIONAL GUARD OF THE U. S.	1,508	528	980
ARMY RESERVE	51,903	49,169	2,734
NAVAL RESERVE	60,180	14,894	45,286
MARINE CORPS RESERVE	5,538	5,388	150
AIR FORCE - TOTAL	39,105	38,556	549
AIR NATIONAL GUARD OF THE U. S.	314	149	165
AIR FORCE RESERVE	38,791	38,407	384

A/ INCLUDES OFFICER CANDIDATES.

DEPARTMENT OF DEFENSE
 WASHINGTON HEADQUARTERS SERVICES
 DIRECTORATE FOR INFORMATION
 OPERATIONS AND REPORTS
 APRIL 11, 1979

TABLE R22.0

DEPARTMENT OF DEFENSE
RESERVE STRENGTH ON ACTIVE DUTY A/

DATE	TOTAL DOD	ARMY			NAVAL RESERVE	MARINE CORPS RESERVE	AIR FORCE	
		NATIONAL GUARD	ARMY RESERVE	AIR NATIONAL GUARD			AIR FORCE RESERVE	
31 OCT 1978	158,674	1,561	52,165	59,761	5,624	300	39,263	
30 NOV 1978	158,346	1,545	51,787	59,811	5,616	300	39,287	
31 DEC 1978	157,997	1,553	51,667	60,225	5,579	316	38,655	
31 JAN 1979	158,234	1,508	51,903	60,180	5,538	314	38,791	

A/ CONTINGUOUS OR EXTENDED ACTIVE DUTY.
EXCLUDES ACTIVE DUTY FOR RESERVE TRAINING.

DEPARTMENT OF DEFENSE
WASHINGTON HEADQUARTERS SERVICES
DIRECTORATE FOR INFORMATION
OPERATIONS AND REPORTS
APRIL 11, 1979

TABLE R23.0

DEPARTMENT OF DEFENSE
RESERVE COMPONENT PERSONNEL NOT ON ACTIVE DUTY BY COMPONENT AND CATEGORY

JANUARY 31, 1979

COMPONENT/ PERSONNEL	TOTAL	NAT'L GUARD OF THE U.S. A/	ARMY RESERVE	NAVAL RESERVE	MARINE CORPS RESERVE	AIR B/ NAT'L GUARD OF THE U.S.	AIR FORCE RESERVE
TOTAL	2,091,285	347,365	812,848	331,703	97,076	91,769	410,524
OFFICER	681,729	34,976	284,016	170,275	12,327	11,214	168,921
ENLISTED C/	1,409,556	312,389	528,832	161,428	84,749	80,555	241,603
READY RESERVE	1,151,135	347,365	368,032	169,673	78,383	91,769	95,913
OFFICER	190,394	34,976	79,726	34,776	6,801	11,214	22,901
ENLISTED C/	960,741	312,389	288,306	134,897	71,582	80,555	73,012
STANDBY RESERVE	144,227	-	50,280	36,537	13,808	-	43,602
OFFICER	96,725	-	27,543	29,056	2,177	-	37,949
ENLISTED	47,502	-	22,737	7,481	11,631	-	5,653
ACTIVE STATUS	67,575	-	36,280	7,331	13,749	-	10,215
OFFICER	22,333	-	13,546	50	2,118	-	6,619
ENLISTED	45,242	-	22,734	7,281	11,631	-	3,596
INACTIVE STATUS	76,652	-	14,000	29,206	59	-	33,387
OFFICER	74,392	-	13,997	29,006	59	-	31,330
ENLISTED	2,260	-	3	200	-	-	2,057
RETIRED RESERVE	795,923	-	394,536	125,493	4,885	-	271,009
OFFICER	394,610	-	176,747	106,443	3,349	-	108,071
ENLISTED	401,313	-	217,789	19,050	1,536	-	162,938

A/ INCLUDES "INACTIVE NATIONAL GUARD" NUMBERING 2,141 TOTAL, 564 OFFICERS, 1,577 ENLISTED
AND RESERVE ENLISTMENT PROGRAM (REPS) IN A NON-PAY STATUS NUMBERING 2,437.
B/ INCLUDES REPS IN A NON-PAY STATUS NUMBERING 197.
C/ INCLUDES OFFICER CANDIDATES.

DEPARTMENT OF DEFENSE
WASHINGTON HEADQUARTERS SERVICES
DIRECTORATE FOR INFORMATION
OPERATIONS AND REPORTS
APRIL 11, 1979

TABLE R24.0

DEPARTMENT OF DEFENSE
RESERVE STRENGTH NOT ON ACTIVE DUTY A/

DATE	TOTAL DOD	ARMY			AIR FORCE		
		B/ NATIONAL GUARD	ARMY RESERVE	NAVAL RESERVE	MARINE CORPS RESERVE	AIR NATIONAL GUARD	AIR FORCE RESERVE
31 OCT 1978	2,105,643	348,935	816,414	339,584	97,929	91,697	411,084
30 NOV 1978	2,099,265	347,699	815,529	336,404	97,629	91,692	410,312
31 DEC 1978	2,097,411	347,063	816,884	334,469	97,243	91,757	409,995
31 JAN 1979	2,091,285	347,365	812,848	331,703	97,076	91,769	410,524

A/ INCLUDES RESERVES ON ACTIVE DUTY
FOR RESERVE TRAINING PURPOSES
B/ INCLUDES "INACTIVE" NATIONAL GUARD

DEPARTMENT OF DEFENSE
WASHINGTON HEADQUARTERS SERVICES
DIRECTORATE FOR INFORMATION
OPERATIONS AND REPORTS
APRIL 11, 1979

TABLE R26.5
DEPARTMENT OF DEFENSE
SELECTED RESERVE DRILL PAY STRENGTH

JANUARY 31, 1979

COMPONENT/ PERSONNEL	TOTAL	DRILL PAY STATUS A/ B/	INITIAL ACTIVE DUTY TRAINING B/
TOTAL DOD	786,762	764,610	22,152
OFFICERS	113,646	113,646	-
ENLISTED	673,116	650,964	22,152
ARMY NATIONAL GUARD	342,787	329,777	13,010
OFFICERS	34,412	34,412	-
ENLISTED	308,375	295,365	13,010
ARMY RESERVE	184,850	180,928	3,922
OFFICERS	35,932	35,932	-
ENLISTED	148,918	144,996	3,922
NAVAL RESERVE	81,777	81,242	535
OFFICERS	16,818	16,818	-
ENLISTED	64,959	64,424	535
MARINE CORPS RESERVE	32,464	29,887	2,577
OFFICERS	2,550	2,550	-
ENLISTED	29,914	27,337	2,577
AIR NATIONAL GUARD	91,572	90,203	1,369
OFFICERS	11,214	11,214	-
ENLISTED	80,358	78,989	1,369
AIR FORCE RESERVE	53,312	52,573	739
OFFICERS	12,720	12,720	-
ENLISTED	40,592	39,853	739

A/ INCLUDES PAY GROUPS A, B, C, M, P.
B/ INCLUDES PAY GROUP F.

DEPARTMENT OF DEFENSE
WASHINGTON HEADQUARTERS SERVICES
DIRECTORATE FOR INFORMATION
OPERATIONS AND REPORTS
APRIL 11, 1979

