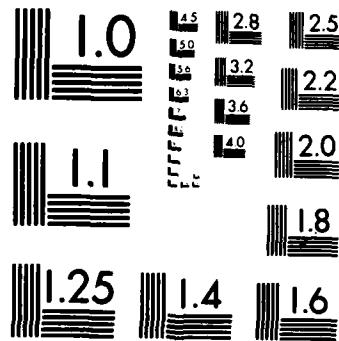


1 OF 1

AD-A152 904



MICROCOPY RESOLUTION TEST CHART
NATIONAL BUREAU OF STANDARDS-1963-A

**THIS REPORT IS UNCLASSIFIED AND
ITS DISTRIBUTION IS UNLIMITED**

MILITARY MANPOWER STATISTICS

as of DECEMBER 1979



4
3
1980

DEPARTMENT OF DEFENSE
WASHINGTON HEADQUARTERS SERVICES
DIRECTORATE FOR INFORMATION
OPERATIONS AND REPORTS

FOREWORD

MILITARY MANPOWER STATISTICS (MMS) is a monthly publication prepared by the Washington Headquarters Services, Directorate for Information Operations and Reports (WHS/DIOR) of the Office of the Secretary of Defense

MMS presents audited statistical data pertaining to active duty military, reserve components, and retired military personnel of the Department of Defense. The publication is generated from a computerized data base developed and maintained by the Manpower Management Information Division of WHS/DIOR.

Requests for additional copies and changes in distribution should be addressed to the Director, Washington Headquarters Services, Room 3E843, The Pentagon, Washington, DC 20301.

TABLE OF CONTENTS

<u>Number</u>	<u>Title</u>
Table P10	Military/Civilian Personnel
Table P11	Department of Defense Manpower Comparison
Table P22.1	Total Active Duty Military Personnel by Service
Table P23.1	Active Duty Officer Personnel and Percent of Total Military Personnel by Service
Table P23.3	Total Active Duty Military Personnel by Type
Table P23.4	Army Active Duty Military Personnel by Type
Table P23.5	Navy Active Duty Military Personnel by Type
Table P23.6	Marine Corps Active Duty Military Personnel by Type
Table P23.7	Air Force Active Duty Military Personnel by Type
Table P23.41	Army Active Duty Military Personnel
Table P23.51	Navy Active Duty Military Personnel
Table P23.61	Marine Corps Active Duty Military Personnel
Table P23.71	Air Force Active Duty Military Personnel
Table P25.6	Women Military Personnel on Active Duty Officers and Enlisted by Service
Table P26.0	Military Personnel on Active Duty by Grade in Which Serving
Table P26.02	Female Military Personnel On Active Duty by Grade in Which Serving

Number

Title

Table P26.04	Military Personnel on Active Duty by Grade in Which Serving - Regular
Table P26.05	Military Personnel on Active Duty by Grade in Which Serving - Reserve
Table P27.1	Summary of Enlisted Personnel Procurement
Table P27.21	Army Enlisted Personnel Procurement
Table P27.22	Navy Enlisted Personnel Procurement
Table P27.23	Marine Corps Enlisted Personnel Procurement
Table P27.24	Air Force Enlisted Personnel Procurement
Table P29.20 - P29.34	Reenlistment Rates by Service
Table P55.0	Reserve Officers' Training Corps Enrollment at Beginning and End of School Year
Table P55.1	Reserve Officer Training Corps Enrollment at Beginning and at End of School Year
Table P55.2	Enrollment in Reserve Officers' Training Corps by Military Service, Category, and Year of ROTC
Table R11.0	Reserve Component Strength Summary
Table R12.0	Reserve Strength - Officer and Enlisted Not on Active Duty
Table R13.0	Ready Reserve and Active Duty Strength Compared to Statutory Limitation
Table R14.0	Reserve Component Personnel by Reserve Category Not on Active Duty - Total
Table R14.0	Reserve Component Personnel by Reserve Category Not on Active Duty - Officers
Table R14.0	Reserve Component Personnel by Reserve Category Not on Active Duty - Enlisted
Table R18.0	Selected Reserve

Number

Title

Table R21.0	Reserve Personnel on Active Duty by Component
Table R22.0	Reserve Strength on Active Duty
Table R23.0	Reserve Personnel by Component and Category Not on Active Duty
Table R24.0	Reserve Strength Not on Active Duty
Table R26.5	Selected Reserve Drill Pay Strength

TABLE P10
DEPARTMENT OF DEFENSE
MILITARY/CIVILIAN PERSONNEL

	TOTAL DOD	ARMY	NAVY	MARINE CORPS	AIR FORCE
1. ACTIVE DUTY MILITARY AS OF 31 DEC 1979					
OFFICER	272,618	96,338	61,991	18,103	96,186
ENLISTED	1,734,707	659,109	455,390	163,799	456,409
ACADEMY CADETS	12,915	4,173	4,476	-	4,266
TOTAL ACTIVE DUTY MILITARY	2,020,240	759,620	521,857	181,902	556,861
2. GUARD AND RESERVES AS OF 31 DEC 1979					
NATIONAL GUARD IN PAID STATUS	447,151	353,553	-	-	93,598
	442,572	349,161	-	-	93,411
RESERVES IN PAID STATUS	1,682,979	833,887	333,015	99,881	416,196
	368,288	191,159	87,198	33,060	56,871
TOTAL GUARD AND RESERVES IN PAID STATUS	2,130,130	1,187,440	333,015	99,881	509,794
	810,860	540,320	87,198	33,060	150,282
3. OFFICER TRAINING IN COLLEGES A/ AS OF OCTOBER 1979					
	93,295	65,186	7,633	-	20,476
4. CIVILIAN PERSONNEL - MILITARY AND CIVIL FUNCTIONS B/					
TOTAL DOD	3,150,370	1,946,666	1,008,670	314,043	880,991
AS OF 31 DEC 1979					
DIRECT HIRE	967,195	347,564	309,334	233,406	76,891
INDIRECT HIRE	75,090	49,515	10,758	13,103	1,714
TOTAL CIVILIAN PERSONNEL	1,042,285	397,079	320,092	246,509	78,605

A/ EXCLUDES 166,212 IN JUNIOR DIVISION, MILITARY
SCHOOLS AND NATIONAL DEFENSE CADETS CORPS.

B/ INCLUDES CIVIL FUNCTIONS EMPLOYMENT OF
39,920 ARMY AND AIR FORCE, ALSO INCLUDES
DISADVANTAGED YOUTH EMPLOYEES.

C/ INCLUDES MARINE CORPS PERSONNEL.
D/ INCLUDES OSD/JCS.

DEPARTMENT OF DEFENSE
WASHINGTON HEADQUARTERS SERVICES
DIRECTORATE FOR INFORMATION
OPERATIONS AND REPORTS
APRIL 23, 1980

TABLE P11

DOD MANPOWER COMPARISON
(MILITARY & CIVIL FUNCTIONS)

DATE	TOTAL DOD	ARMY			AIR FORCE			NAVY AND MARINE CORPS			A/ OSD/ JCS	
		MILI- TARY	B/ CIVIL- IAN	TOTAL	MILI- TARY	B/ CIVIL- IAN	TOTAL	MILI- TARY	MARINE CORPS MILI- TARY	B/ CIVIL- IAN		TOTAL
31 OCT 78	3,039,492	768,695	352,741	1,121,436	569,785	240,342	810,127	526,869	190,624	311,361	1,030,854	77,075
30 NOV 78	3,031,627	764,299	351,565	1,115,864	568,999	240,455	809,454	527,958	189,101	312,072	1,029,131	77,178
31 DEC 78	3,018,684	756,645	350,396	1,107,041	567,003	239,622	806,625	529,178	187,928	310,951	1,028,057	76,961
31 JAN 79	3,011,743	757,822	347,168	1,104,990	566,831	238,190	805,021	527,234	187,888	310,094	1,025,216	76,516
28 FEB 79	3,004,857	755,497	346,805	1,102,302	565,767	237,598	803,365	526,050	186,669	310,109	1,022,828	76,362
31 MAR 79	2,993,929	751,294	346,875	1,098,169	564,611	235,237	799,848	524,922	185,518	309,298	1,019,738	76,174
30 APR 79	2,989,659	750,831	346,791	1,097,622	563,061	234,896	797,957	524,202	183,997	309,939	1,018,138	75,942
31 MAY 79	2,990,789	749,815	349,691	1,099,506	561,649	235,553	797,202	523,649	183,186	310,950	1,017,785	76,286
30 JUN 79	3,002,360	752,468	357,050	1,109,518	562,419	237,785	800,204	524,514	184,269	313,164	1,021,947	70,691
31 JUL 79	3,008,607	756,714	358,047	1,114,761	561,825	238,664	800,489	522,268	185,884	314,613	1,022,765	70,592
31 AUG 79	2,997,877	758,992	351,581	1,110,573	559,984	235,645	795,629	519,512	185,143	311,662	1,016,317	75,358
30 SEP 79	2,987,780	758,852	346,694	1,105,546	559,455	234,249	793,704	523,937	185,250	303,472	1,012,659	75,871
31 OCT 79	2,993,174	763,922	345,338	1,109,260	559,216	233,289	792,505	521,887	184,539	308,633	1,015,059	76,350
30 NOV 79	2,996,675	765,602	347,628	1,113,230	558,462	233,730	792,192	521,337	183,796	309,486	1,014,619	76,634
31 DEC 79	2,987,435	759,620	347,564	1,107,184	556,861	233,406	790,267	521,857	181,902	309,334	1,013,093	76,891

A/ CIVILIAN PERSONNEL, MILITARY PERSONNEL ASSIGNED TO OSD, OJCS AND OTHER DEFENSE ACTIVITIES ARE REPORTED BY THEIR RESPECTIVE SERVICES.

B/ -TOTAL PAID EMPLOYEES- AS REPORTED OFFICIALLY TO THE OFFICE OF PERSONNEL MANAGEMENT, EXCLUDES OVERSEAS SUPPORT PERSONNEL (INDIRECT HIRE).

DEPARTMENT OF DEFENSE
WASHINGTON HEADQUARTERS SERVICES
DIRECTORATE FOR INFORMATION
OPERATIONS AND REPORTS
APRIL 25, 1980

TABLE P22.1

DEPARTMENT OF DEFENSE
TOTAL ACTIVE DUTY MILITARY PERSONNEL BY SERVICE

DATE	TOTAL DOD	ARMY	NAVY	MARINE CORPS	AIR FORCE
OCT 31, 1978	2,057,973	768,695	528,869	190,624	569,785
NOV 30, 1978	2,050,357	764,299	527,958	189,101	568,999
DEC 31, 1978	2,040,754	756,645	529,178	187,928	567,003
JAN 31, 1979	2,039,775	757,822	527,234	187,888	566,831
FEB 28, 1979	2,033,983	755,497	526,050	186,669	565,767
MAR 31, 1979	2,026,345	751,294	524,922	185,518	564,611
APR 30, 1979	2,022,091	750,831	524,202	183,997	563,061
MAY 31, 1979	2,018,299	749,815	523,649	183,186	561,649
JUN 30, 1979	2,023,670	752,468	524,514	184,269	562,419
JUL 31, 1979	2,026,691	756,714	522,268	185,884	561,825
AUG 31, 1979	2,023,631	758,992	519,512	185,143	559,984
SEP 30, 1979	2,027,494	758,852	523,937	185,250	559,455
OCT 31, 1979	2,029,564	763,922	521,887	184,539	559,216
NOV 30, 1979	2,029,197	765,602	521,337	183,796	558,462
DEC 31, 1979	2,020,240	759,620	521,857	181,902	556,861

DEPARTMENT OF DEFENSE
WASHINGTON HEADQUARTERS SERVICES
DIRECTORATE FOR INFORMATION
OPERATIONS AND REPORTS
APRIL 25, 1980

TABLE P23.1

DEPARTMENT OF DEFENSE
ACTIVE DUTY OFFICER PERSONNEL AND PERCENT OF TOTAL MILITARY PERSONNEL, BY SERVICE

DATE	TOTAL DOD		ARMY		NAVY		MARINE CORPS		AIR FORCE	
	NUMBER	%	NUMBER	%	NUMBER	%	NUMBER	%	NUMBER	%
OCT 31, 1978	273,464	13.3	97,277	12.7	62,331	11.8	18,411	9.7	95,445	16.8
NOV 30, 1978	272,530	13.3	96,788	12.7	62,069	11.8	18,404	9.7	95,269	16.7
DEC 31, 1978	272,181	13.3	96,461	12.7	62,375	11.8	18,307	9.7	95,038	16.8
JAN 31, 1979	271,480	13.3	96,486	12.7	61,584	11.7	18,426	9.8	94,984	16.8
FEB 28, 1979	271,085	13.3	96,384	12.8	61,548	11.7	18,423	9.9	94,730	16.7
MAR 31, 1979	270,460	13.3	96,089	12.8	61,405	11.7	18,315	9.9	94,651	16.8
APR 30, 1979	271,115	13.4	96,084	12.8	62,168	11.9	18,354	10.0	94,509	16.8
MAY 31, 1979	273,094	13.5	96,864	12.9	62,363	11.9	18,331	10.0	95,536	17.0
JUN 30, 1979	275,745	13.6	98,714	13.1	62,872	12.0	18,499	10.0	95,660	17.0
JUL 31, 1979	274,005	13.5	97,983	12.9	62,452	12.0	18,319	9.9	95,251	17.0
AUG 31, 1979	273,607	13.5	97,515	12.8	62,248	12.0	18,298	9.9	95,546	17.1
SEP 30, 1979	274,129	13.5	97,381	12.8	62,384	11.9	18,229	9.8	96,135	17.2
OCT 31, 1979	272,799	13.4	96,864	12.7	62,099	11.9	18,162	9.8	95,674	17.1
NOV 30, 1979	272,796	13.4	96,388	12.6	62,159	11.9	18,060	9.8	96,189	17.2
DEC 31, 1979	272,618	13.5	96,338	12.7	61,991	11.9	18,103	10.0	96,186	17.3

DEPARTMENT OF DEFENSE
WASHINGTON HEADQUARTERS SERVICES
DIRECTORATE FOR INFORMATION
OPERATIONS AND REPORTS
APRIL 25, 1980

TABLE P23.3

DEPARTMENT OF DEFENSE
TOTAL ACTIVE DUTY MILITARY PERSONNEL BY TYPE

DATE	OFFICERS	ENLISTED	A/ OFFICER CANDIDATES	TOTAL
OCT 31, 1978	273,464	1,771,491	13,018	2,057,973
NOV 30, 1978	272,530	1,764,887	12,940	2,050,357
DEC 31, 1978	272,181	1,755,712	12,861	2,040,754
JAN 31, 1979	271,480	1,755,585	12,710	2,039,775
FEB 28, 1979	271,085	1,750,237	12,661	2,033,983
MAR 31, 1979	270,460	1,743,362	12,523	2,026,345
APR 30, 1979	271,115	1,738,535	12,441	2,022,091
MAY 31, 1979	273,094	1,733,782	11,423	2,018,299
JUN 30, 1979	275,745	1,736,931	10,994	2,023,670
JUL 31, 1979	274,005	1,740,527	12,159	2,026,691
AUG 31, 1979	273,607	1,736,815	13,209	2,023,631
SEP 30, 1979	274,129	1,740,260	13,105	2,027,494
OCT 31, 1979	272,799	1,743,775	12,990	2,029,564
NOV 30, 1979	272,796	1,743,472	12,929	2,029,197
DEC 31, 1979	272,618	1,734,707	12,915	2,020,240

A/ CONSISTS OF THE FOLLOWING:
FOR ARMY - CADETS, U. S. MILITARY ACADEMY
FOR NAVY - MIDSHIPMEN, U. S. NAVAL ACADEMY
FOR AIR FORCE - CADETS, U. S. AIR FORCE ACADEMY

DEPARTMENT OF DEFENSE
WASHINGTON HEADQUARTERS SERVICES
DIRECTORATE FOR INFORMATION
OPERATIONS AND REPORTS
APRIL 25, 1980

TABLE P23.4

DEPARTMENT OF DEFENSE
ARMY ACTIVE DUTY MILITARY PERSONNEL BY TYPE

DATE	OFFICERS	ENLISTED	CADETS		TOTAL
			U. S. MILITARY ACADEMY		
OCT 31, 1978	97,277	667,155	4,263		768,695
NOV 30, 1978	96,788	663,301	4,210		764,299
DEC 31, 1978	96,461	655,979	4,205		756,645
JAN 31, 1979	96,486	657,143	4,193		757,822
FEB 28, 1979	96,384	654,924	4,189		755,497
MAR 31, 1979	96,089	651,090	4,115		751,294
APR 30, 1979	96,084	650,651	4,096		750,831
MAY 31, 1979	96,864	648,868	4,083		749,815
JUN 30, 1979	98,714	650,556	3,198		752,468
JUL 31, 1979	97,983	654,225	4,506		756,714
AUG 31, 1979	97,515	657,140	4,337		758,992
SEP 30, 1979	97,381	657,184	4,287		758,852
OCT 31, 1979	96,864	662,820	4,238		763,922
NOV 30, 1979	96,388	665,009	4,205		765,602
DEC 31, 1979	96,338	659,109	4,173		759,620

DEPARTMENT OF DEFENSE
WASHINGTON HEADQUARTERS SERVICES
DIRECTORATE FOR INFORMATION
OPERATIONS AND REPORTS
APRIL 25, 1980

TABLE P23.5

DEPARTMENT OF DEFENSE
NAVY ACTIVE DUTY MILITARY PERSONNEL BY TYPE

DATE	OFFICERS	ENLISTED	MIDSHIPMEN		TOTAL
			U. S. NAVAL ACADEMY		
OCT 31, 1978	62,331	462,151	4,387		528,869
NOV 30, 1978	62,069	461,514	4,375		527,958
DEC 31, 1978	62,375	462,431	4,372		529,178
JAN 31, 1979	61,584	461,315	4,335		527,234
FEB 28, 1979	61,548	460,179	4,323		526,050
MAR 31, 1979	61,405	459,237	4,280		524,922
APR 30, 1979	62,168	457,802	4,232		524,202
MAY 31, 1979	62,363	457,091	4,195		523,649
JUN 30, 1979	62,872	458,409	3,233		524,514
JUL 31, 1979	62,452	456,608	3,208		522,268
AUG 31, 1979	62,248	452,794	4,470		519,512
SEP 30, 1979	62,384	457,102	4,451		523,937
OCT 31, 1979	62,099	455,366	4,422		521,887
NOV 30, 1979	62,159	454,768	4,410		521,337
DEC 31, 1979	61,991	455,390	4,476		521,857

DEPARTMENT OF DEFENSE
WASHINGTON HEADQUARTERS SERVICES
DIRECTORATE FOR INFORMATION
OPERATIONS AND REPORTS
APRIL 25, 1980

TABLE P23.6

DEPARTMENT OF DEFENSE
MARINE CORPS ACTIVE DUTY MILITARY PERSONNEL BY TYPE

DATE	OFFICERS	ENLISTED	TOTAL
OCT 31, 1978	18,411	172,213	190,624
NOV 30, 1978	18,404	170,697	189,101
DEC 31, 1978	18,307	169,621	187,928
JAN 31, 1979	18,426	169,462	187,888
FEB 28, 1979	18,423	168,246	186,669
MAR 31, 1979	18,315	167,203	185,518
APR 30, 1979	18,354	165,643	183,997
MAY 31, 1979	18,331	164,855	183,186
JUN 30, 1979	18,499	165,770	184,269
JUL 31, 1979	18,319	167,565	185,884
AUG 31, 1979	18,298	166,845	185,143
SEP 30, 1979	18,229	167,021	185,250
OCT 31, 1979	18,162	166,377	184,539
NOV 30, 1979	18,060	165,736	183,796
DEC 31, 1979	18,103	163,799	181,902

DEPARTMENT OF DEFENSE
WASHINGTON HEADQUARTERS SERVICES
DIRECTORATE FOR INFORMATION
OPERATIONS AND REPORTS
APRIL 25, 1980

TABLE P23.7

DEPARTMENT OF DEFENSE
AIR FORCE ACTIVE DUTY MILITARY PERSONNEL BY TYPE

DATE	OFFICERS	ENLISTED	CADETS		TOTAL
			U.S.A.F.	ACADEMY	
OCT 31, 1978	95,445	469,972	4,368		569,785
NOV 30, 1978	95,269	469,375	4,355		568,999
DEC 31, 1978	95,038	467,681	4,284		567,003
JAN 31, 1979	94,984	467,665	4,182		566,831
FEB 28, 1979	94,730	466,888	4,149		565,767
MAR 31, 1979	94,651	465,832	4,126		564,611
APR 30, 1979	94,509	464,439	4,113		563,061
MAY 31, 1979	95,536	462,968	3,145		561,649
JUN 30, 1979	95,660	462,196	4,563		562,419
JUL 31, 1979	95,251	462,129	4,445		561,825
AUG 31, 1979	95,546	460,036	4,402		559,984
SEP 30, 1979	96,135	458,953	4,367		559,455
OCT 31, 1979	95,674	459,212	4,330		559,216
NOV 30, 1979	96,189	457,959	4,314		558,462
DEC 31, 1979	96,186	456,409	4,266		556,861

DEPARTMENT OF DEFENSE
WASHINGTON HEADQUARTERS SERVICES
DIRECTORATE FOR INFORMATION
OPERATIONS AND REPORTS
APRIL 25, 1980

TABLE P23.41

DEPARTMENT OF DEFENSE
ARMY ACTIVE DUTY MILITARY PERSONNEL

REPORTED STRENGTH, AND ADJUSTMENTS TO REPORTED STRENGTH TO DERIVE "DIRECT PROGRAM STRENGTH" CHARGEABLE TO APPROPRIATION "MILITARY PERSONNEL, ARMY"

DATE	REPORTED STRENGTH	A/ (LESS) EXCLUDABLES	TOTAL PROGRAM STRENGTH	(LESS) REIMBURSABLES	ENL	TOTAL	OFFICER	ENLISTED	CADETS USMA
31 OCT 1978	768,695	487	768,206	645	352	767,209	96,145	666,801	4,263
30 NOV 1978	764,299	494	763,803	626	340	762,837	95,668	662,959	4,210
31 DEC 1978	756,645	496	756,147	620	356	755,171	95,345	655,621	4,205
31 JAN 1979	757,822	498	757,322	603	311	756,408	95,385	656,830	4,193
28 FEB 1979	755,497	499	754,996	583	292	754,121	95,302	654,630	4,189
31 MAR 1979	751,294	497	750,794	527	226	750,041	95,065	650,861	4,115
30 APR 1979	750,831	502	750,326	510	197	749,619	95,072	650,451	4,096
31 MAY 1979	749,815	499	749,313	507	188	748,618	95,858	648,677	4,083
30 JUN 1979	752,468	484	751,981	455	168	751,358	97,775	650,385	3,198
31 JUL 1979	756,714	485	756,225	421	162	755,642	97,077	654,059	4,506
31 AUG 1979	758,992	487	758,501	410	159	757,932	96,616	656,977	4,337
30 SEP 1979	758,852	492	758,356	390	156	757,810	96,499	657,024	4,287
31 OCT 1979	763,922	495	763,424	391	154	762,879	95,978	662,663	4,238
30 NOV 1979	765,602	502	765,097	389	157	764,551	95,497	664,849	4,205
31 DEC 1979	759,620	500	759,117	388	156	758,573	95,450	658,950	4,173

A/ ACTIVE DUTY PERSONNEL PAID BY AN APPROPRIATION OTHER THAN MILITARY PERSONNEL, ARMY, AND EXCLUDED FROM THE END STRENGTH OF THE ARMY. COMPRISED OF CIVIL WORKS PERSONNEL, AND USAR AND ARNG PERSONNEL ON STATUTORY TOURS.

DEPARTMENT OF DEFENSE
WASHINGTON HEADQUARTERS SERVICES
DIRECTORATE FOR INFORMATION
OPERATIONS AND REPORTS
APRIL 25, 1980

TABLE P23.51

DEPARTMENT OF DEFENSE
NAVY ACTIVE DUTY MILITARY PERSONNEL

REPORTED STRENGTH, AND ADJUSTMENTS TO REPORTED STRENGTH TO DERIVE "DIRECT PROGRAM STRENGTH" CHARGEABLE TO APPROPRIATION "MILITARY PERSONNEL, NAVY"

DATE	REPORTED STRENGTH	(LESS) PAID FROM A/ RES PERS APPN	TOTAL PROGRAM STRENGTH	REIMBURSABLES (LESS)	OFFICER ENLISTED	TOTAL	OFFICER	ENLISTED	TOTAL	OFFICER	ENLISTED	OFFICER CANDIDATES
31 OCT 1978	528,869	198	528,671	461	1,527	526,683	61,672	460,624	526,683	61,672	460,624	4,387
30 NOV 1978	527,958	201	527,757	467	1,571	525,719	61,401	459,943	525,719	61,401	459,943	4,375
31 DEC 1978	529,178	203	528,975	470	1,444	527,061	61,702	460,987	527,061	61,702	460,987	4,372
31 JAN 1979	527,234	203	527,031	459	1,548	525,024	60,922	459,767	525,024	60,922	459,767	4,335
28 FEB 1979	526,050	200	525,850	451	1,587	523,812	60,897	458,592	523,812	60,897	458,592	4,323
31 MAR 1979	524,922	198	524,724	441	1,606	522,677	60,766	457,631	522,677	60,766	457,631	4,280
30 APR 1979	524,202	203	523,999	442	1,607	521,950	61,523	456,195	521,950	61,523	456,195	4,232
31 MAY 1979	523,649	200	523,449	435	1,596	521,418	61,728	455,495	521,418	61,728	455,495	4,195
30 JUN 1979	524,514	202	524,312	424	1,616	522,272	62,246	456,793	522,272	62,246	456,793	3,233
31 JUL 1979	522,268	197	522,071	408	1,577	520,086	61,847	455,031	520,086	61,847	455,031	3,208
31 AUG 1979	519,512	194	519,318	434	1,529	517,355	61,620	451,265	517,355	61,620	451,265	4,470
30 SEP 1979	523,937	195	523,742	410	1,480	521,852	61,779	455,622	521,852	61,779	455,622	4,451
31 OCT 1979	521,887	194	521,693	394	1,469	519,830	61,511	453,897	519,830	61,511	453,897	4,422
30 NOV 1979	521,337	195	521,142	400	1,484	519,258	61,564	453,284	519,258	61,564	453,284	4,410
31 DEC 1979	521,857	194	521,663	412	1,469	519,782	61,385	453,921	519,782	61,385	453,921	4,476

A/ NAVAL RESERVE PERSONNEL ON ACTIVE DUTY UNDER PROVISIONS OF SEC. 265, TITLE 10, U.S. CODE PAID FROM THE NAVAL RESERVE PERSONNEL APPROPRIATION.

DEPARTMENT OF DEFENSE
WASHINGTON HEADQUARTERS SERVICES
DIRECTORATE FOR INFORMATION
OPERATIONS AND REPORTS
APRIL 25, 1980

TABLE P23. 61

DEPARTMENT OF DEFENSE
MARINE CORPS ACTIVE DUTY MILITARY PERSONNEL

REPORTED STRENGTH, AND ADJUSTMENTS TO REPORTED STRENGTH TO DERIVE "DIRECT PROGRAM STRENGTH" CHARGEABLE TO APPROPRIATION "MILITARY PERSONNEL, MARINE CORPS"

DATE	REPORTED STRENGTH	(LESS) PAID FROM A/ RES PERS APPN	TOTAL PROGRAM STRENGTH	OFFICER	ENLISTED	TOTAL	REIMBURSABLES	(LESS)	OFFICER	ENLISTED	TOTAL	DIRECT PROGRAM STRENGTH CHARGEABLE TO APPN. "MILITARY PERSONNEL, MARINE CORPS"	OFFICER	ENLISTED	CANDIDATES
31 OCT 1978	190,624	62	190,562	20	1	190,541			18,329		18,329	172,212			-
30 NOV 1978	189,101	65	189,036	20	1	189,015			18,319		18,319	170,696			-
31 DEC 1978	187,928	65	187,863	21	1	187,841			18,221		18,221	169,620			-
31 JAN 1979	187,888	66	187,822	21	1	187,800			18,339		18,339	169,461			-
28 FEB 1979	186,669	66	186,603	20	1	186,582			18,337		18,337	168,245			-
31 MAR 1979	185,518	64	185,454	20	1	185,433			18,231		18,231	167,202			-
30 APR 1979	183,997	65	183,932	20	1	183,911			18,269		18,269	165,642			-
31 MAY 1979	183,166	65	183,121	20	1	183,100			18,246		18,246	164,854			-
30 JUN 1979	184,269	64	184,205	20	1	184,184			18,415		18,415	165,769			-
31 JUL 1979	185,884	63	185,821	21	1	185,799			18,235		18,235	167,564			-
31 AUG 1979	185,143	61	185,082	21	1	185,060			18,216		18,216	166,844			-
30 SEP 1979	185,250	63	185,187	21	1	185,165			18,145		18,145	167,020			-
31 OCT 1979	184,539	64	184,475	21	1	184,453			18,077		18,077	166,376			-
30 NOV 1979	183,796	65	183,731	21	1	183,709			17,974		17,974	165,735			-
31 DEC 1979	181,902	64	181,838	21	1	181,816			18,018		18,018	163,798			-

A/ MARINE CORPS RESERVE PERSONNEL ON ACTIVE DUTY UNDER PROVISIONS OF SEC. 265, TITLE 10, U.S. CODE PAID FROM THE MARINE CORPS RESERVE PERSONNEL APPROPRIATION.

DEPARTMENT OF DEFENSE
WASHINGTON HEADQUARTERS SERVICES
DIRECTORATE FOR INFORMATION OPERATIONS AND REPORTS
APRIL 25, 1980

TABLE P23.71

DEPARTMENT OF DEFENSE
AIR FORCE ACTIVE DUTY MILITARY PERSONNEL

REPORTED STRENGTH, AND ADJUSTMENTS TO REPORTED STRENGTH TO DERIVE "DIRECT PROGRAM STRENGTH" CHARGEABLE TO APPROPRIATION "MILITARY PERSONNEL, AIR FORCE"

DATE	REPORTED STRENGTH	(LESS) ANG/AFR	TOTAL PROGRAM STRENGTH	(LESS) REIMBURSABLES	TOTAL	OFFICER	ENLISTED	TOTAL	OFFICER	ENLISTED	USAF & AVCADS
31 OCT 1978	569,785		569,785		569,785	224		569,561			
30 NOV 1978	568,999	225	568,774		568,774	225		568,549			
31 DEC 1978	567,003	221	566,782		566,782	221		566,561			
31 JAN 1979	566,831	224	566,607		566,607	224		566,383			
28 FEB 1979	565,767	226	565,541		565,541	226		565,315			
31 MAR 1979	564,611	230	564,381		564,381	230		564,151			
30 APR 1979	563,061	230	562,831		562,831	230		562,601			
31 MAY 1979	561,649	231	561,418		561,418	231		561,187			
30 JUN 1979	562,419	230	562,189		562,189	230		561,959			
31 JUL 1979	561,825	228	561,597		561,597	228		561,369			
31 AUG 1979	559,984	222	559,762		559,762	222		559,540			
30 SEP 1979	559,455	235	559,220		559,220	235		558,985			
31 OCT 1979	559,216	233	558,983		558,983	233		558,750			
30 NOV 1979	558,462	236	558,226		558,226	236		557,990			
31 DEC 1979	556,861	234	556,627		556,627	234		556,393			

DEPARTMENT OF DEFENSE
WASHINGTON HEADQUARTERS SERVICES
DIRECTORATE FOR INFORMATION
OPERATIONS AND REPORTS
APRIL 25, 1980

TABLE P25 6

DEPARTMENT OF DEFENSE
WOMEN MILITARY PERSONNEL ON ACTIVE DUTY, OFFICERS, AND ENLISTED BY SERVICE

DATE	TOTAL DOD			ARMY			NAVY			MARINE CORPS			AIR FORCE		
	TOTAL	OFF	ENL AND OFF CAND	TOTAL	OFF	ENL	TOTAL	OFF	ENL AND OFF CAND	TOTAL	OFF	ENL	TOTAL	OFF	ENL
31 OCT 78	135,444	16,877	118,567	57,090	6,348	50,742	25,673	4,032	21,641	5,143	429	4,714	47,538	6,068	41,470
30 NOV 78	136,417	16,931	119,486	57,035	6,323	50,712	25,897	4,036	21,861	5,156	443	4,713	48,329	6,129	42,200
31 DEC 78	136,702	16,965	119,737	56,358	6,299	50,059	26,351	4,092	22,259	5,138	443	4,695	48,855	6,131	42,724
31 JAN 79	137,987	17,079	120,908	56,857	6,340	50,517	26,545	4,050	22,495	5,306	447	4,859	49,279	6,242	43,037
28 FEB 79	138,834	17,257	121,577	57,094	6,419	50,675	26,334	4,071	22,263	5,369	440	4,929	50,037	6,327	43,710
31 MAR 79	140,255	17,345	122,910	56,969	6,437	50,532	26,843	4,077	22,766	5,413	436	4,977	51,030	6,395	44,635
30 APR 79	141,621	17,442	124,179	57,289	6,462	50,827	27,463	4,100	23,363	5,466	455	5,011	51,403	6,425	44,978
31 MAY 79	143,156	17,794	125,362	57,673	6,645	51,028	27,873	4,116	23,757	5,474	456	5,018	52,136	6,577	45,559
30 JUN 79	145,341	18,023	127,318	58,675	6,737	51,938	28,191	4,135	24,056	5,518	453	5,065	52,957	6,698	46,259
31 JUL 79	146,816	18,272	128,544	59,595	6,775	52,820	28,571	4,203	24,368	5,721	447	5,274	52,929	6,847	46,082
31 AUG 79	148,707	18,465	130,242	61,248	6,788	54,460	28,705	4,206	24,499	5,710	443	5,267	53,044	7,028	46,016
30 SEP 79	151,082	18,959	132,123	62,017	6,866	55,151	29,402	4,338	25,064	5,960	459	5,501	53,703	7,276	46,427
31 OCT 79	153,265	19,050	134,215	63,806	6,961	56,845	29,855	4,378	25,477	5,922	456	5,466	53,982	7,255	46,727
30 NOV 79	155,902	19,209	136,693	64,668	6,873	57,795	30,366	4,432	25,934	6,026	456	5,570	54,842	7,448	47,394
31 DEC 79	156,851	19,241	137,610	64,425	6,882	57,543	31,077	4,410	26,667	6,057	464	5,593	55,292	7,485	47,807

DEPARTMENT OF DEFENSE
WASHINGTON HEADQUARTERS SERVICES
DIRECTORATE FOR INFORMATION
OPERATIONS AND REPORTS
APRIL 25, 1980

TABLE P26 0

DEPARTMENT OF DEFENSE
MILITARY PERSONNEL ON ACTIVE DUTY BY GRADE IN WHICH SERVING A/

DECEMBER 31, 1979

RANK/GRADE	TOTAL DOD	ARMY	NAVY	MARINE CORPS	AIR FORCE
GENERAL OF ARMY - FLEET ADMIRAL	1	1	-	-	-
GENERAL - ADMIRAL	33	10	8	2	13
LT GENERAL - VICE ADMIRAL	108	32	32	7	37
MAJ GENERAL - REAR ADMIRAL (U)	410	168	90	23	129
BRIG GENERAL - REAR ADMIRAL (L)	557	212	132	34	179
COLONEL - CAPTAIN	13,884	4,487	3,658	575	5,164
LIEUTENANT COL - COMMANDER	32,657	11,046	7,339	1,488	12,784
MAJOR - LT COMMANDER	49,111	16,264	11,772	2,640	18,435
CAPTAIN - LIEUTENANT	85,208	26,826	17,171	4,630	36,581
1ST LIEUTENANT - LIEUTENANT (JG)	36,407	11,974	10,021	4,659	9,753
2ND LIEUTENANT - ENSIGN	37,080	12,223	8,886	2,861	13,110
CHIEF WARRANT OFFICER W-4	2,171	1,385	590	195	1
CHIEF WARRANT OFFICER W-3	4,382	3,873	435	74	-
CHIEF WARRANT OFFICER W-2	7,561	5,227	1,849	485	-
WARRANT OFFICER W-1	3,048	2,610	8	430	-
TOTAL OFFICERS	272,618	96,338	61,991	18,103	96,186
E-9	12,836	3,751	3,321	1,272	4,492
E-8	23,155	12,741	8,391	3,210	8,813
E-7	116,890	45,242	30,449	8,361	32,838
E-6	200,422	71,410	64,303	12,663	52,046
E-5	315,694	115,838	78,759	22,153	98,944
E-4	391,617	172,927	89,088	27,355	102,247
E-3	330,887	97,355	91,903	42,278	99,351
E-2	151,306	55,300	45,053	24,325	26,628
E-1	181,900	84,545	44,123	22,182	31,050
TOTAL ENLISTED	1,734,707	659,109	455,390	163,799	456,409
CADETS & MIDSHIPMEN	12,915	4,173	4,476	-	4,266
GRAND TOTAL	2,020,240	759,620	521,857	181,902	556,861

A/ INCLUDES REIMBURSABLE ACTIVE DUTY
MILITARY PAY STRENGTHS AND ACTIVE
DUTY MILITARY PERSONNEL PAID FROM
CIVIL FUNCTIONS, RESERVE, AND
NATIONAL GUARD APPROPRIATIONS

DEPARTMENT OF DEFENSE
WASHINGTON HEADQUARTERS SERVICES
DIRECTORATE FOR INFORMATION
OPERATIONS AND REPORTS
APRIL 25, 1980

TABLE P26.02

DEPARTMENT OF DEFENSE
FEMALE MILITARY PERSONNEL ON ACTIVE DUTY BY GRADE IN WHICH SERVING A/

DECEMBER 31, 1979

RANK / GRADE	TOTAL DOD	ARMY	NAVY	MARINE CORPS	AIR FORCE
GENERAL OF ARMY - FLEET ADMIRAL	-	-	-	-	-
GENERAL - ADMIRAL	-	-	-	-	-
LT GENERAL - VICE ADMIRAL	-	-	-	-	-
MAJ GENERAL - REAR ADMIRAL (U)	1	-	-	-	1
BRIG GENERAL - REAR ADMIRAL (L)	6	2	2	1	1
COLONEL - CAPTAIN	222	93	73	4	52
LIEUTENANT COL - COMMANDER	787	235	217	17	318
MAJOR - LT COMMANDER	1,947	632	553	36	726
CAPTAIN - LIEUTENANT	6,922	2,606	1,558	96	2,662
1ST LIEUTENANT - LIEUTENANT (JG)	4,541	1,674	1,068	179	1,620
2ND LIEUTENANT - ENSIGN	4,685	1,549	924	107	2,105
CHIEF WARRANT OFFICER W-4	6	2	1	3	-
CHIEF WARRANT OFFICER W-3	11	5	4	2	-
CHIEF WARRANT OFFICER W-2	55	33	10	12	-
WARRANT OFFICER W-1	58	51	-	7	-
TOTAL OFFICERS	19,241	6,882	4,410	464	7,485
E-9	40	21	4	6	9
E-8	153	78	24	26	25
E-7	751	462	116	71	102
E-6	3,094	1,681	862	198	353
E-5	21,245	10,275	4,306	839	5,825
E-4	37,132	16,636	5,891	1,032	13,573
E-3	35,853	11,245	6,996	1,491	16,121
E-2	16,912	5,930	3,851	1,138	5,993
E-1	21,188	10,890	4,160	792	5,346
TOTAL ENLISTED	136,368	57,218	26,210	5,593	47,347
CADETS & MIDSHIPMEN	1,242	325	457	-	460
GRAND TOTAL	156,851	64,425	31,077	6,057	55,292

A/ INCLUDES REIMBURSABLE ACTIVE DUTY
MILITARY PAY STRENGTHS AND ACTIVE
DUTY MILITARY PERSONNEL PAID FROM
CIVIL FUNCTIONS, RESERVE, AND
NATIONAL GUARD APPROPRIATIONS.

DEPARTMENT OF DEFENSE
WASHINGTON HEADQUARTERS SERVICES
DIRECTORATE FOR INFORMATION
OPERATIONS AND REPORTS
APRIL 25, 1980

TABLE P26.04

DEPARTMENT OF DEFENSE
MILITARY PERSONNEL ON ACTIVE DUTY BY GRADE IN WHICH SERVING.

REGULAR A/

DECEMBER 31, 1979

RANK/GRADE	ARMY	NAVY	MARINE CORPS	AIR FORCE
GENERAL OF ARMY - FLEET ADMIRAL	1	-	-	-
GENERAL - ADMIRAL	33	8	2	13
LT GENERAL - VICE ADMIRAL	107	32	7	37
MAJ GENERAL - REAR ADMIRAL (U)	401	88	23	124
BRIG GENERAL - REAR ADMIRAL (L)	550	130	33	177
COLONEL - CAPTAIN	13,185	3,466	539	4,947
LIEUTENANT COL - COMMANDER	29,174	6,785	1,456	11,696
MAJOR - LT COMMANDER	36,421	10,190	2,514	13,948
CAPTAIN - LIEUTENANT	49,189	12,700	4,073	21,014
1ST LIEUTENANT - LIEUTENANT (JG)	14,558	6,220	2,542	1,691
2ND LIEUTENANT - ENSIGN	11,697	4,467	891	1,848
CHIEF WARRANT OFFICER W-4	1,676	582	187	1
CHIEF WARRANT OFFICER W-3	2,311	432	69	-
CHIEF WARRANT OFFICER W-2	3,314	1,835	478	-
WARRANT OFFICER W-1	446	8	430	-
TOTAL OFFICERS	163,063	46,943	13,244	55,496
E-9	12,698	3,194	1,267	4,487
E-8	32,804	8,061	3,197	8,807
E-7	115,586	29,210	8,320	32,826
E-6	197,246	61,180	12,636	52,038
E-5	311,263	74,416	22,091	98,937
E-4	385,753	83,611	27,348	102,214
E-3	316,021	78,943	42,274	99,124
E-2	138,053	34,055	24,322	26,599
E-1	170,332	33,345	22,178	30,905
TOTAL ENLISTED	1,679,756	406,015	163,633	455,937
REGULAR TOTAL	1,842,819	452,958	176,877	511,433

A/ REGULAR PLUS RETIRED REGULAR
OFFICERS ON ACTIVE DUTY.

DEPARTMENT OF DEFENSE
WASHINGTON HEADQUARTERS SERVICES
DIRECTORATE FOR INFORMATION
OPERATIONS AND REPORTS
APRIL 25, 1980

TABLE P26 05

DEPARTMENT OF DEFENSE
MILITARY PERSONNEL ON ACTIVE DUTY BY GRADE IN WHICH SERVING

RESERVE A/

DECEMBER 31, 1979

RANK/GRADE	TOTAL DOD	ARMY	NAVY	MARINE CORPS	AIR FORCE
GENERAL OF ARMY - FLEET ADMIRAL	-	-	-	-	-
GENERAL - ADMIRAL	-	-	-	-	-
LT GENERAL - VICE ADMIRAL	1	1	-	-	-
MAJ GENERAL - REAR ADMIRAL (U)	9	2	2	-	5
BRIG GENERAL - REAR ADMIRAL (L)	7	2	2	1	2
COLONEL - CAPTAIN	699	254	192	36	217
LIEUTENANT COL - COMMANDER	3,483	1,809	554	32	1,088
MAJOR - LT COMMANDER	12,690	6,495	1,582	126	4,487
CAPTAIN - LIEUTENANT	36,019	15,424	4,471	557	15,567
1ST LIEUTENANT - LIEUTENANT (JG)	21,849	7,869	3,801	2,117	8,062
2ND LIEUTENANT - ENSIGN	25,383	7,732	4,419	1,970	11,262
CHIEF WARRANT OFFICER W-4	495	479	8	8	-
CHIEF WARRANT OFFICER W-3	2,071	2,063	3	5	-
CHIEF WARRANT OFFICER W-2	4,247	4,226	14	7	-
WARRANT OFFICER W-1	2,602	2,602	-	-	-
TOTAL OFFICERS	109,555	48,958	15,048	4,859	40,690
E-9	138	1	127	5	5
E-8	351	2	330	13	6
E-7	1,304	12	1,239	41	12
E-6	3,176	18	3,123	27	8
E-5	4,431	19	4,343	62	7
E-4	5,864	347	5,477	7	33
E-3	14,866	1,675	12,960	4	227
E-2	13,253	2,223	10,998	3	29
E-1	11,568	641	10,778	4	145
TOTAL ENLISTED	54,951	4,938	49,375	166	472
RESERVE TOTAL	164,506	53,896	64,423	5,025	41,162

A/ INCLUDES RESERVE, NATIONAL GUARD,
AUS, AND AFUS OFFICERS ON ACTIVE
DUTY

DEPARTMENT OF DEFENSE
WASHINGTON HEADQUARTERS SERVICES
DIRECTORATE FOR INFORMATION
OPERATIONS AND REPORTS
APRIL 25, 1980

TABLE P27.1

DEPARTMENT OF DEFENSE
SUMMARY OF ENLISTED PERSONNEL PROCUREMENT
FISCAL YEAR 1980

	OCT 1979	NOV 1979	DEC 1979	JAN 1980	FEB 1980	MAR 1980
TOTAL DEPARTMENT OF DEFENSE	52,500	46,109	33,431			
INDUCTIONS	-	-	-			
FIRST ENLISTMENTS	31,154	26,620	17,681			
IMMEDIATE REENLISTMENTS	16,587	15,356	13,635			
OTHER REENLISTMENTS	2,140	1,899	1,507			
RESERVES TO ACTIVE DUTY A/	2,619	2,234	608			
ARMY	26,059	22,055	13,723			
INDUCTIONS	-	-	-			
FIRST ENLISTMENTS	16,528	13,447	6,260			
IMMEDIATE REENLISTMENTS	7,220	6,963	6,483			
OTHER REENLISTMENTS	1,496	1,115	675			
RESERVES TO ACTIVE DUTY	815	530	305			
NAVY	9,997	9,525	6,743			
INDUCTIONS	-	-	-			
FIRST ENLISTMENTS	5,448	4,912	4,420			
IMMEDIATE REENLISTMENTS	2,468	2,491	1,712			
OTHER REENLISTMENTS	329	462	394			
RESERVES TO ACTIVE DUTY	1,752	1,660	217			
MARINE CORPS	4,596	3,897	3,252			
INDUCTIONS	-	-	-			
FIRST ENLISTMENTS	2,796	2,730	1,869			
IMMEDIATE REENLISTMENTS	1,652	995	1,013			
OTHER REENLISTMENTS	102	132	288			
RESERVES TO ACTIVE DUTY	46	40	82			
AIR FORCE	11,648	10,632	9,713			
INDUCTIONS	-	-	-			
FIRST ENLISTMENTS	6,382	5,531	5,132			
IMMEDIATE REENLISTMENTS	5,247	4,907	4,427			
OTHER REENLISTMENTS	213	190	150			
RESERVES TO ACTIVE DUTY	6	4	4			

A/ INCLUDES NATIONAL GUARD.

TABLE P27.21

DEPARTMENT OF DEFENSE
ARMY ENLISTED PERSONNEL PROCUREMENT
FISCAL YEAR 1980

	OCT 1979	NOV 1979	DEC 1979	JAN 1980	FEB 1980	MAR 1980
TOTAL	26,059	22,055	13,723			
REGULAR ENL. AND REENL. - TOTAL	25,244	21,525	13,418			
FIRST ENLISTMENTS	16,528	13,447	6,260			
REENLISTMENTS - TOTAL	8,716	8,078	7,158			
IMMEDIATE REENLISTMENTS	7,220	6,963	6,483			
FORMER REGULAR	7,170	6,895	6,445			
FORMER RESERVE & N.G.	90	68	38			
FORMER INDUCTEE	-	-	-			
REENL. OTHER THAN IMMEDIATE	1,496	1,115	675			
WITHIN 2-90 DAYS AFTER SEPARATION	252	169	118			
FORMER REGULAR	85	47	28			
FORMER RESERVE & N.G.	139	102	83			
FORMER INDUCTEE	10	10	4			
FORMER OFFICER	18	10	3			
OVER 90 DAYS AFTER SEPARATION	1,244	946	557			
INDUCTIONS	-	-	-			
RESERVES AND N.G. CALLS	815	530	305			

DEPARTMENT OF DEFENSE
WASHINGTON HEADQUARTERS SERVICES
DIRECTORATE FOR INFORMATION
OPERATIONS AND REPORTS
APRIL 21, 1980

TABLE P27.22

DEPARTMENT OF DEFENSE
NAVY ENLISTED PERSONNEL PROCUREMENT
FISCAL YEAR 1980

	OCT 1979	NOV 1979	DEC 1979	JAN 1980	FEB 1980	MAR 1980
TOTAL	9,997	9,525	6,743			
REGULAR ENL. AND REENL. - TOTAL	8,245	7,865	6,526			
FIRST ENLISTMENTS	5,448	4,912	4,420			
REENLISTMENTS - TOTAL	2,797	2,953	2,106			
IMMEDIATE REENLISTMENTS	2,468	2,491	1,712			
FORMER REGULAR	2,380	2,406	1,679			
FORMER RESERVE	88	85	33			
REENL. OTHER THAN IMMEDIATE	329	462	394			
WITHIN 2-90 DAYS AFTER SEPARATION	71	94	63			
FORMER REGULAR	71	94	63			
FORMER RESERVE	-	-	-			
OVER 90 DAYS AFTER SEPARATION	258	368	331			
INDUCTIONS	-	-	-			
RESERVES TO ACTIVE DUTY	1,752	1,660	217			
FIRST ENLISTMENTS	252	286	155			
REENLISTMENTS	83	82	49			
REPORTED TO ACTIVE DUTY	1,417	1,292	13			

DEPARTMENT OF DEFENSE
WASHINGTON HEADQUARTERS SERVICES
DIRECTORATE FOR INFORMATION
OPERATIONS AND REPORTS
APRIL 21, 1980

TABLE P27.23

DEPARTMENT OF DEFENSE
MARINE CORPS ENLISTED PERSONNEL PROCUREMENT
FISCAL YEAR 1980

	OCT 1979	NOV 1979	DEC 1979	JAN 1980	FEB 1980	MAR 1980
TOTAL	4,596	3,897	3,252			
REGULAR ENL. AND REENL. - TOTAL	4,550	3,857	3,170			
FIRST ENLISTMENTS	2,796	2,730	1,869			
REENLISTMENTS - TOTAL	1,754	1,127	1,301			
IMMEDIATE REENLISTMENTS	1,652	995	1,013			
FORMER REGULAR A/ FORMER RESERVE FORMER INDUCTEE	1,606 46 -	966 29 -	968 45 -			
REENL. OTHER THAN IMMEDIATE	102	132	288			
WITHIN 2-90 DAYS AFTER SEPARATION	1	1	13			
FORMER REGULAR FORMER RESERVE FORMER INDUCTEE	1 - -	1 - -	5 8 -			
OVER 90 DAYS AFTER SEPARATION B/	101	131	275			
INDUCTIONS	-	-	-			
RESERVES TO ACTIVE DUTY	46	40	82			
FIRST ENLISTMENTS REENLISTMENTS REPORTED TO ACTIVE DUTY	- - 46	- - 40	- - 82			

A/ INCLUDES EXTENSIONS FOR WHICH REENLISTMENT BONUS IS PAID.
B/ INCLUDES ENLISTMENTS OF FORMER OFFICERS.

DEPARTMENT OF DEFENSE
WASHINGTON HEADQUARTERS SERVICES
DIRECTORATE FOR INFORMATION
OPERATIONS AND REPORTS
APRIL 21, 1980

TABLE P27.24

DEPARTMENT OF DEFENSE
AIR FORCE ENLISTED PERSONNEL PROCUREMENT
FISCAL YEAR 1980

	OCT 1979	NOV 1979	DEC 1979	JAN 1980	FEB 1980	MAR 1980
TOTAL	11,848	10,632	9,713			
REGULAR ENL. AND REENL. - TOTAL	11,842	10,628	9,709			
FIRST ENLISTMENTS	6,382	5,531	5,132			
REENLISTMENTS - TOTAL	5,460	5,097	4,577			
IMMEDIATE REENLISTMENTS	5,247	4,907	4,427			
FORMER REGULAR FORMER RESERVE & N.G.	5,247	4,907	4,426			1
REENL. OTHER THAN IMMEDIATE	213	190	150			
WITHIN 2-90 DAYS AFTER SEPARATION	-	-	-			
FORMER REGULAR FORMER RESERVE & N.G.	-	-	-			
OVER 90 DAYS AFTER SEPARATION A/	213	190	150			
INDUCTIONS	-	-	-			
RESERVES & N.G. TO ACTIVE DUTY	6	4	4			

A/ INCLUDES ENLISTMENTS OF FORMER COMMISSIONED AND WARRANT OFFICERS.

TABLE P29.20-29.34

DEPARTMENT OF DEFENSE
REENLISTMENT RATES BY SERVICE

	A/ "UNADJUSTED" REENLISTMENT RATES FOR TOTAL REGULARS				B/ "ADJUSTED" REENLISTMENT RATES FOR TOTAL REGULARS				REENLISTMENT RATE ARMY INDUCTEES			
	TOTAL DOD	ARMY	NAVY	MARINE CORPS	AIR FORCE	TOTAL DOD	ARMY	NAVY	MARINE CORPS	AIR FORCE	UN- ADJUSTED	AD- JUSTED
ELIGIBLES	85,579	33,314	19,979	9,254	23,032	78,162	31,167	19,033	8,446	19,516	-	-
REENLISTMENTS	47,871	20,720	9,114	3,673	14,364	41,035	18,570	8,669	2,840	10,936	-	-
REENLISTMENT RATE	55.9%	62.2%	45.6%	39.7%	62.4%	52.5%	59.6%	45.7%	33.6%	56.0%	-	-

FY 1980 (3 MOS)

TABLE P29.20-29.34

DEPARTMENT OF DEFENSE
REENLISTMENT RATES BY SERVICE

	A/ "UNADJUSTED" REENLISTMENT RATES FOR FIRST-TERM REGULARS				B/ "ADJUSTED" REENLISTMENT RATES FOR FIRST-TERM REGULARS					
	TOTAL DOD	ARMY	NAVY	MARINE CORPS	AIR FORCE	TOTAL DOD	ARMY	NAVY	MARINE CORPS	AIR FORCE
ELIGIBLES	41,457	12,650	12,703	5,169	10,915	37,000	11,718	12,086	4,786	8,410
REENLISTMENTS	16,470	6,439	4,307	1,290	4,434	12,448	5,505	4,082	879	1,982
REENLISTMENT RATE	39.7%	50.9%	33.9%	24.9%	40.6%	33.6%	47.0%	33.8%	18.4%	23.6%

FY 1980 (3 MOS)

TABLE P29.20-29.34

DEPARTMENT OF DEFENSE
REENLISTMENT RATES BY SERVICE

	A/ "UNADJUSTED" REENLISTMENT RATES FOR CAREER REGULARS				B/ "ADJUSTED" REENLISTMENT RATES FOR CAREER REGULARS					
	TOTAL DOD	ARMY	NAVY	MARINE CORPS	AIR FORCE	TOTAL DOD	ARMY	NAVY	MARINE CORPS	AIR FORCE
ELIGIBLES	44,122	20,664	7,276	4,065	12,117	41,162	19,449	6,947	3,660	11,106
REENLISTMENTS	31,401	14,281	4,807	2,383	9,930	28,587	13,065	4,607	1,961	8,954
REENLISTMENT RATE	71.2%	69.1%	66.1%	58.6%	82.0%	69.4%	67.2%	66.3%	53.6%	80.6%

FY 1980 (3 MOS)

DEFINITIONS:

- A/ "UNADJUSTED REENLISTMENT RATE" - THE RATIO OF TOTAL REENLISTMENTS OCCURRING IN A GIVEN PERIOD TO TOTAL SEPARATIONS ELIGIBLE TO REENLIST IN THE SAME PERIOD, EXPRESSED AS A PERCENTAGE.
- B/ "ADJUSTED REENLISTMENT RATE" - THE "UNADJUSTED" RATE ADJUSTED TO EXCLUDE THE EFFECTS OF: (1) EARLY SEPARATIONS FOR IMMEDIATE REENLISTMENTS AND (2) OTHER EARLY DISCHARGES OF ELIGIBLES UNDER EARLY RELEASE PROGRAMS

TABLE P55.0

DEPARTMENT OF DEFENSE
RESERVE OFFICERS' TRAINING CORPS ENROLLMENT AT BEGINNING AND END OF SCHOOL YEAR

SCHOOL YEAR	SENIOR RESERVE OFFICERS' TRAINING CORPS										
	ARMY		NAVY		AIR FORCE		SCHOLARSHIP A/		NON-SCHOLARSHIP A/		TOTAL
	TOTAL DOD	SCHOLARSHIP A/	NON-SCHOLARSHIP	TOTAL	REGULAR A/	CONTRACT	TOTAL	SCHOLARSHIP A/	NON-SCHOLARSHIP A/		
1978-79:	OCT 1978	89,170	63,279	6,546	56,733	7,872	5,698	2,174	18,019	5,590	12,429
	MAY 1979	83,888	61,100	6,242	54,858	6,816	5,148	1,668	15,972	5,632	10,340
1979-80:	OCT 1979	93,295	65,186	6,773	58,413	7,633	5,570	2,063	20,476	5,826	14,650

A/ FINANCIAL ASSISTANCE PROGRAMS UNDER SEC 2107, TITLE 10

SCHOOL YEAR	JUNIOR RESERVE OFFICERS' TRAINING CORPS, AND NATIONAL DEFENSE CADET CORPS										
	ARMY		NAVY		MARINE CORPS		AIR FORCE		N. D. C. C.		TOTAL
	NO. OF SCHOOLS	ENROLLMENT	NO. OF SCHOOLS	ENROLLMENT	NO. OF SCHOOLS	ENROLLMENT	NO. OF SCHOOLS	ENROLLMENT	NO. OF SCHOOLS	ENROLLMENT	
1978-79:	OCT 1978	1,192	168,394	1,185	167,721	105,690	23,655	6,776	31,600	7	673
	MAY 1979	1,180	144,324	1,171	143,530	91,794	20,220	5,536	25,980	9	794
1979-80:	OCT 1979	1,209	166,212	1,205	165,778	105,143	22,951	5,536	32,148	4	434

DEPARTMENT OF DEFENSE
WASHINGTON HEADQUARTERS SERVICES
DIRECTORATE FOR INFORMATION
OPERATIONS AND REPORTS
APRIL 22, 1980

TABLE P55.1

DEPARTMENT OF DEFENSE
RESERVE OFFICER TRAINING CORPS
ENROLLMENT AT BEGINNING AND AT END OF SCHOOL YEAR

SCHOOL YEAR	TOTAL DOD	SENIOR DIVISION				JUNIOR DIVISION A/	
		ARMY	NAVY	TOTAL	REGULAR	CONTRACT	AIR FORCE
1978-79: OCT 1978	89,170	63,279	5,698	7,872	5,698	2,174	18,019
MAY 1979	83,888	61,100	5,148	6,816	5,148	1,668	15,972
1979-80: OCT 1979	93,295	65,186	5,570	7,633	5,570	2,063	20,476
							168,394
							144,324
							166,212

A/ CONSISTS OF HIGH SCHOOLS, ACADEMIES, JUNIOR COLLEGES AND NATIONAL CADET CORPS SCHOOLS

DEPARTMENT OF DEFENSE
WASHINGTON HEADQUARTERS SERVICES
DIRECTORATE FOR INFORMATION
OPERATIONS AND REPORTS
APRIL 22, 1980

TABLE P55.2

DEPARTMENT OF DEFENSE
ENROLLMENT IN RESERVE OFFICERS' TRAINING CORPS BY MILITARY SERVICE,
CATEGORY, AND YEAR OF ROTC

OCTOBER 1979

SENIOR R. O. T. C.

	BASIC			ADVANCED		COM- PLETED ROTC COMM, DEF A/	TOTAL
	FIRST YEAR	SECOND YEAR	FIRST YEAR	SECOND YEAR			
TOTAL DOD	47,506	18,215	13,451	12,391	1,732	93,295 B/	
ARMY	36,249	11,399	8,257	7,762	1,519	65,186	
SCHOLARSHIP	1,049	1,380	2,028	2,043	273	6,773	
NONSCHOLARSHIP	35,200	10,019	6,229	5,719	1,246	58,413	
NAVY	2,977	2,063	1,203	1,390	-	7,633	
REGULAR	1,773	1,579	1,015	1,203	-	5,570	
CONTRACT	1,204	484	188	187	-	2,063	
AIR FORCE	8,280	4,753	3,991	3,239	213	20,476	
SCHOLARSHIP	1,169	1,590	1,549	1,422	96	5,826	
NONSCHOLARSHIP	7,111	3,163	2,442	1,817	117	14,650	

A/ COMPLETED 4-YEAR ROTC REQUIREMENT, BUT COMMISSIONING DEFERRED UNTIL COM-
PLETION OF ACADEMIC WORK NECESSARY FOR GRADUATION, ETC.

B/ INCLUDES 20,405 WOMEN - ARMY 15,931 NAVY 478 AIR FORCE 3,996.

NOTE: THERE WERE 475 SENIOR UNITS (ARMY, NAVY, AIR FORCE) ENROLLING CADETS.

JUNIOR R. O. T. C. AND NATIONAL DEFENSE CADET CORPS

	NO. OF SCHOOLS	ENROLLMENT	
		MALE	FEMALE
TOTAL JUNIOR R. O. T. C. AND N. D. C. C.	1,209	111,845	54,367
JUNIOR R. O. T. C. - TOTAL	1,205	111,546	54,232
ARMY	664	70,225	34,916
NAVY	206	15,394	7,557
MARINE CORPS	57	3,884	1,652
AIR FORCE	278	22,043	10,105
NATIONAL DEFENSE CADET CORPS - ARMY	4	299	135

DEPARTMENT OF DEFENSE
WASHINGTON HEADQUARTERS SERVICES
DIRECTORATE FOR INFORMATION
OPERATIONS AND REPORTS
APRIL 22, 1980

TABLE R11.0
 DEPARTMENT OF DEFENSE
 RESERVE COMPONENT STRENGTH SUMMARY
 DECEMBER 31, 1979

TYPE OF DUTY	RESERVES BY RESERVE CATEGORY		
	TOTAL	OFFICER	ENLISTED A/
TOTAL	2,130,130	663,133	1,466,997
READY RESERVE NOT ON ACTIVE DUTY	1,223,844	182,559	1,041,285
ACTIVE STATUS	1,220,821	181,873	1,038,948
INACTIVE STATUS B/	3,023	686	2,337
STANDBY RESERVE ON ACTIVE STATUS	101,554	83,665	17,889
INACTIVE STATUS	32,390	16,901	15,489
	69,164	66,764	2,400
RETIRED - RETIRED STATUS	804,732	396,909	407,823

A/ INCLUDES OFFICER CANDIDATES.
 B/ INACTIVE NATIONAL GUARD AND REP'S IN NON-PAY STATUS.

SELECTED RESERVE DRILL PAY STATUS INITIAL ACTIVE DUTY TRAINING	RESERVES IN "PAID STATUS"		
	PAY GROUP	TOTAL	OFFICER ENLISTED
A, B, C, M, P, T, Q	810,860	114,446	696,414
F, U	787,399	114,446	672,953
	23,461	-	23,461

DEPARTMENT OF DEFENSE
 WASHINGTON HEADQUARTERS SERVICES
 DIRECTORATE FOR INFORMATION
 OPERATIONS AND REPORTS
 APRIL 23, 1980

TABLE R12.0

DEPARTMENT OF DEFENSE
RESERVE STRENGTH - OFFICER AND ENLISTED
NOT ON ACTIVE DUTY

DATE	TOTAL	OFFICERS	ENLISTED A/
31 OCT 1978	2,105,643	680,208	1,425,435
30 NOV 1978	2,099,265	680,125	1,419,140
31 DEC 1978	2,097,411	679,224	1,418,187
31 JAN 1979	2,091,285	681,729	1,409,556
28 FEB 1979	2,092,893	682,257	1,410,636
31 MAR 1979	2,092,419	679,842	1,412,577
30 APR 1979	2,096,931	680,370	1,416,561
31 MAY 1979	2,092,121	673,812	1,418,309
30 JUN 1979	2,093,845	670,942	1,422,903
31 JUL 1979	2,088,691	665,786	1,422,905
31 AUG 1979	2,175,892	649,548	1,526,344
30 SEP 1979	2,108,840	663,727	1,445,113
31 OCT 1979	2,119,750	663,212	1,456,538
30 NOV 1979	2,126,363	664,288	1,462,075
31 DEC 1979	2,130,130	663,133	1,466,997

A/ INCLUDES OFFICER CANDIDATES.

DEPARTMENT OF DEFENSE
WASHINGTON HEADQUARTERS SERVICES
DIRECTORATE FOR INFORMATION
OPERATIONS AND REPORTS
APRIL 23, 1980

TABLE R13.0

DEPARTMENT OF DEFENSE
READY RESERVE AND ACTIVE DUTY STRENGTH COMPARED TO STATUTORY LIMITATION

DECEMBER 31, 1979

	TOTAL	ON ACTIVE DUTY	NOT ON ACTIVE DUTY
STATUTORY READY RESERVE LIMITATION A/	2,900,000		
SHORTFALL	1,490,629		
READY RESERVE AND ACTIVE DUTY STRENGTH	1,409,371	165,460	1,243,911
COAST GUARD RESERVE	21,021	954	20,067
DOD RESERVE	1,388,350	164,506	1,223,844
ARMY	808,818	53,896	754,922
NATIONAL GUARD B/	355,253	1,700	353,553
ARMY RESERVE	453,565	52,196	401,369
NAVAL RESERVE	244,579	64,423	180,156
MARINE CORPS RESERVE	97,329	5,025	92,304
AIR FORCE	237,624	41,162	196,462
AIR NATIONAL GUARD C/	93,894	296	93,598
AIR FORCE RESERVE	143,730	40,866	102,864

A/ SECTION 205(B), ARMED FORCES RESERVE ACT OF 1952, AS AMENDED.
B/ INCLUDES "INACTIVE NATIONAL GUARD" NUMBERING 3,023 AND REP'S NUMBERING 1,369.
C/ INCLUDES REP'S IN A NON-PAY STATUS NUMBERING 187.

DEPARTMENT OF DEFENSE
WASHINGTON HEADQUARTERS SERVICES
DIRECTORATE FOR INFORMATION
OPERATIONS AND REPORTS
APRIL 23, 1980

TABLE R14.0
 DEPARTMENT OF DEFENSE
 RESERVE COMPONENT PERSONNEL BY RESERVE CATEGORY
 NOT ON ACTIVE DUTY

DATE	TOTAL	READY	STANDBY	RETIRED
31 OCT 1978	2,105,643	1,145,651	168,144	791,848
30 NOV 1978	2,099,265	1,147,552	157,931	793,782
31 DEC 1978	2,097,411	1,151,253	152,595	793,563
31 JAN 1979	2,091,285	1,151,135	144,227	795,923
28 FEB 1979	2,092,893	1,157,516	139,035	796,342
31 MAR 1979	2,092,419	1,166,155	132,679	793,585
30 APR 1979	2,096,931	1,172,987	127,626	796,318
31 MAY 1979	2,092,121	1,175,846	116,255	798,020
30 JUN 1979	2,093,845	1,181,098	113,011	799,736
31 JUL 1979	2,088,691	1,178,602	108,634	801,455
31 AUG 1979	2,175,892	1,194,813	106,425	874,654
30 SEP 1979	2,108,840	1,202,642	103,421	802,777
31 OCT 1979	2,119,750	1,213,769	103,160	802,821
30 NOV 1979	2,125,363	1,220,242	101,822	804,299
31 DEC 1979	2,130,130	1,223,844	101,554	804,732

TABLE R14.0

DEPARTMENT OF DEFENSE
RESERVE COMPONENT PERSONNEL BY RESERVE CATEGORY
NOT ON ACTIVE DUTY

OFFICERS

DATE	TOTAL	READY	STANDBY	RETIRED
31 OCT 1978	680,208	191,477	95,981	392,750
30 NOV 1978	680,125	191,899	95,173	393,053
31 DEC 1978	679,224	189,816	96,841	392,567
31 JAN 1979	681,729	190,394	96,725	394,610
28 FEB 1979	682,257	190,556	96,874	394,827
31 MAR 1979	679,842	190,908	95,841	393,093
30 APR 1979	680,370	191,072	94,805	394,493
31 MAY 1979	673,812	189,569	88,988	395,255
30 JUN 1979	670,942	187,138	88,256	395,548
31 JUL 1979	665,786	183,868	85,830	396,088
31 AUG 1979	649,549	182,709	85,453	381,386
30 SEP 1979	663,727	182,710	84,836	396,181
31 OCT 1979	663,212	182,299	84,561	396,352
30 NOV 1979	664,288	183,819	83,693	396,776
31 DEC 1979	663,133	182,559	83,665	396,909

TABLE R14.0
 DEPARTMENT OF DEFENSE
 RESERVE COMPONENT PERSONNEL BY RESERVE CATEGORY
 NOT ON ACTIVE DUTY

ENLISTED A/

DATE	TOTAL	READY	STANDBY	RETIRED
31 OCT 1978	1,425,435	954,174	72,163	399,098
30 NOV 1978	1,419,140	955,653	62,758	400,729
31 DEC 1978	1,418,187	961,437	55,754	400,996
31 JAN 1979	1,409,556	960,741	47,502	401,313
28 FEB 1979	1,410,636	966,960	42,161	401,515
31 MAR 1979	1,412,577	975,247	36,838	400,492
30 APR 1979	1,416,561	981,915	32,821	401,825
31 MAY 1979	1,418,309	966,277	29,267	402,765
30 JUN 1979	1,422,903	993,960	24,755	404,188
31 JUL 1979	1,422,905	994,734	22,804	405,367
31 AUG 1979	1,526,344	1,012,104	20,972	493,268
30 SEP 1979	1,445,113	1,019,932	18,585	406,596
31 OCT 1979	1,456,538	1,031,470	18,599	406,469
30 NOV 1979	1,462,075	1,036,423	18,129	407,523
31 DEC 1979	1,466,997	1,041,285	17,889	407,823

A/ INCLUDES OFFICER CANDIDATES.

TABLE R18.0

DEPARTMENT OF DEFENSE
SELECTED RESERVE

DATE	TOTAL	DRILL PAY STATUS	INITIAL ACTIVE DUTY TRAINING
31 OCT 1978	786,866	762,851	24,015
30 NOV 1978	786,360	762,164	24,196
31 DEC 1978	785,852	764,005	21,847
31 JAN 1979	786,762	764,610	22,152
28 FEB 1979	790,326	768,656	21,670
31 MAR 1979	793,081	770,712	22,369
30 APR 1979	795,506	773,314	22,192
31 MAY 1979	796,598	773,949	22,649
30 JUN 1979	797,919	769,577	28,342
31 JUL 1979	799,766	768,380	31,386
31 AUG 1979	800,597	769,446	31,151
30 SEP 1979	807,136	778,226	28,910
31 OCT 1979	805,869	778,318	27,551
30 NOV 1979	808,630	781,895	26,735
31 DEC 1979	810,860	787,399	23,461

DEPARTMENT OF DEFENSE
WASHINGTON HEADQUARTERS SERVICES
DIRECTORATE FOR INFORMATION
OPERATIONS AND REPORTS
APRIL 23, 1980

TABLE R21.0
 DEPARTMENT OF DEFENSE
 RESERVE PERSONNEL ON ACTIVE DUTY BY COMPONENT
 DECEMBER 31, 1979

COMPONENT/PERSONNEL	TOTAL	OFFICER	ENLISTED A/
TOTAL DEPARTMENT OF DEFENSE	164,506	109,555	54,951
ARMY - TOTAL	53,896	48,958	4,938
NATIONAL GUARD OF THE U. S.	1,700	462	1,238
ARMY RESERVE	52,196	48,496	3,700
NAVAL RESERVE	64,423	15,048	49,375
MARINE CORPS RESERVE	5,025	4,859	166
AIR FORCE - TOTAL	41,162	40,690	472
AIR NATIONAL GUARD OF THE U. S.	296	151	145
AIR FORCE RESERVE	40,866	40,539	327

A/ INCLUDES OFFICER CANDIDATES.

DEPARTMENT OF DEFENSE
 WASHINGTON HEADQUARTERS SERVICES
 DIRECTORATE FOR INFORMATION
 OPERATIONS AND REPORTS
 APRIL 23, 1980

TABLE R22.0

DEPARTMENT OF DEFENSE
RESERVE STRENGTH ON ACTIVE DUTY A/

DATE	TOTAL DOD	ARMY				AIR FORCE		
		NATIONAL GUARD	ARMY RESERVE	NAVAL RESERVE	MARINE CORPS RESERVE	AIR NATIONAL GUARD	AIR FORCE RESERVE	
31 OCT 1978	158,674	1,561	52,165	59,761	5,624	300	39,263	
30 NOV 1978	158,346	1,545	51,787	59,811	5,616	300	39,287	
31 DEC 1978	157,997	1,553	51,667	60,225	5,579	318	38,655	
31 JAN 1979	158,234	1,508	51,903	60,180	5,538	314	38,791	
28 FEB 1979	158,246	1,523	52,062	60,658	5,433	208	38,362	
31 MAR 1979	158,602	1,488	52,095	60,832	5,232	312	38,643	
30 APR 1979	159,171	1,477	51,994	61,414	5,181	302	38,803	
31 MAY 1979	159,769	1,454	52,025	61,560	5,109	297	39,324	
30 JUN 1979	161,927	1,477	53,184	61,924	5,164	295	39,883	
31 JUL 1979	161,680	1,588	52,558	62,170	5,325	293	39,746	
31 AUG 1979	161,881	1,592	52,467	61,987	5,126	286	40,423	
30 SEP 1979	165,089	1,617	52,924	63,836	5,060	299	41,353	
31 OCT 1979	165,200	1,790	52,850	64,014	5,119	299	41,128	
30 NOV 1979	165,287	1,792	52,495	64,179	5,076	301	41,444	
31 DEC 1979	164,506	1,700	52,196	64,423	5,025	296	40,866	

A/ CONTINUOUS OR EXTENDED ACTIVE DUTY.
EXCLUDES ACTIVE DUTY FOR RESERVE TRAINING.

DEPARTMENT OF DEFENSE
WASHINGTON HEADQUARTERS SERVICES
DIRECTORATE FOR INFORMATION
OPERATIONS AND REPORTS
APRIL 23, 1980

TABLE R23.0

DEPARTMENT OF DEFENSE
RESERVE PERSONNEL BY COMPONENT AND CATEGORY
NOT ON ACTIVE DUTY

DECEMBER 31, 1979

COMPONENT/ PERSONNEL	TOTAL	NAT'L GUARD OF THE U.S. A/	ARMY RESERVE	NAVAL RESERVE	MARINE CORPS RESERVE	AIR B/ NAT'L GUARD OF THE U.S.	AIR FORCE RESERVE
TOTAL	2,130,130	353,553	833,887	333,015	99,881	93,598	416,196
OFFICER	663,133	36,493	274,137	160,258	12,260	11,610	168,375
ENLISTED C/	1,466,997	317,060	559,750	172,757	87,621	81,988	247,821
READY RESERVE	1,223,844	353,553	401,369	180,156	92,304	93,598	102,864
OFFICER	182,559	36,493	73,310	32,543	6,524	11,610	22,079
ENLISTED C/	1,041,285	317,060	328,059	147,613	85,780	81,988	80,785
STANDBY RESERVE	101,554	-	29,806	25,780	2,286	-	43,682
OFFICER	83,665	-	22,783	20,747	1,989	-	38,146
ENLISTED	17,889	-	7,023	5,033	297	-	5,536
ACTIVE STATUS	32,390	-	15,771	4,909	2,211	-	9,499
OFFICER	16,901	-	8,748	59	1,914	-	6,180
ENLISTED	15,489	-	7,023	4,850	297	-	3,319
INACTIVE STATUS	69,164	-	14,035	20,871	75	-	34,183
OFFICER	66,764	-	14,035	20,688	75	-	31,965
ENLISTED	2,400	-	-	183	-	-	2,217
RETIRED RESERVE	804,732	-	402,712	127,079	5,291	-	269,650
OFFICER	396,909	-	178,044	106,968	3,747	-	108,150
ENLISTED	407,823	-	224,668	20,111	1,544	-	161,500

A/ INCLUDES "INACTIVE NATIONAL GUARD" NUMBERING 3,023 TOTAL, 686 OFFICERS, 2,337 ENLISTED AND RESERVE ENLISTMENT PROGRAM (REPS) IN A NON-PAY STATUS NUMBERING 1,369.
B/ INCLUDES REPS IN A NON-PAY STATUS NUMBERING 187.
C/ INCLUDES OFFICER CANDIDATES.

DEPARTMENT OF DEFENSE
WASHINGTON HEADQUARTERS SERVICES
DIRECTORATE FOR INFORMATION
OPERATIONS AND REPORTS
APRIL 23, 1980

TABLE R24 0

DEPARTMENT OF DEFENSE
RESERVE STRENGTH NOT ON ACTIVE DUTY A/

DATE	TOTAL DOD	ARMY				AIR FORCE		
		B/ NATIONAL GUARD	ARMY RESERVE	NAVAL RESERVE	MARINE CORPS RESERVE	AIR NATIONAL GUARD	AIR FORCE RESERVE	
31 OCT 1978	2,105,643	348,935	816,414	339,584	97,929	91,697	411,084	
30 NOV 1978	2,099,265	347,699	815,529	336,404	97,629	91,692	410,312	
31 DEC 1978	2,097,411	347,063	816,884	334,469	97,243	91,757	409,995	
31 JAN 1979	2,091,285	347,365	812,848	331,703	97,076	91,769	410,524	
28 FEB 1979	2,092,893	349,030	814,378	330,096	97,112	91,996	410,281	
31 MAR 1979	2,092,419	349,057	817,979	328,354	95,308	92,272	409,449	
30 APR 1979	2,096,931	349,323	820,308	328,257	96,600	92,476	409,967	
31 MAY 1979	2,092,121	349,460	816,170	326,844	95,799	92,854	410,994	
30 JUN 1979	2,093,845	348,852	818,038	326,763	96,064	92,946	411,182	
31 JUL 1979	2,088,691	348,415	813,158	324,210	97,946	93,109	411,853	
31 AUG 1979	2,175,892	348,099	823,115	325,938	99,484	93,416	485,840	
30 SEP 1979	2,108,840	350,041	823,162	326,527	100,378	93,599	415,133	
31 OCT 1979	2,119,750	350,631	830,256	328,822	100,732	93,650	415,659	
30 NOV 1979	2,126,363	351,959	831,425	331,478	102,232	93,474	415,795	
31 DEC 1979	2,130,130	353,553	833,887	333,015	99,881	93,598	416,196	

A/ INCLUDES RESERVES ON ACTIVE DUTY
FOR RESERVE TRAINING PURPOSES.
B/ INCLUDES "INACTIVE" NATIONAL GUARD.

DEPARTMENT OF DEFENSE
WASHINGTON HEADQUARTERS SERVICES
DIRECTORATE FOR INFORMATION
OPERATIONS AND REPORTS
APRIL 23, 1980

TABLE R26.5
DEPARTMENT OF DEFENSE
SELECTED RESERVE DRILL PAY STRENGTH

DECEMBER 31, 1979

COMPONENT/ PERSONNEL	TOTAL	DRILL PAY STATUS A/	INITIAL ACTIVE DUTY TRAINING B/
TOTAL DOD	810,860	787,399	23,461
OFFICERS	114,446	114,446	-
ENLISTED	696,414	672,953	23,461
ARMY NATIONAL GUARD	349,161	337,337	11,824
OFFICERS	35,807	35,807	-
ENLISTED	313,354	301,530	11,824
ARMY RESERVE	191,159	185,900	5,259
OFFICERS	35,361	35,361	-
ENLISTED	155,798	150,539	5,259
NAVAL RESERVE	87,198	86,470	728
OFFICERS	16,359	16,359	-
ENLISTED	70,839	70,111	728
MARINE CORPS RESERVE	33,060	29,882	3,178
OFFICERS	2,409	2,409	-
ENLISTED	30,651	27,473	3,178
AIR NATIONAL GUARD	93,411	91,681	1,730
OFFICERS	11,610	11,610	-
ENLISTED	81,801	80,071	1,730
AIR FORCE RESERVE	56,871	56,129	742
OFFICERS	12,900	12,900	-
ENLISTED	43,971	43,229	742

A/ INCLUDES PAY GROUPS A, B, C, M, P, T, Q
B/ INCLUDES PAY GROUPS F AND U.

DEPARTMENT OF DEFENSE
WASHINGTON HEADQUARTERS SERVICES
DIRECTORATE FOR INFORMATION
OPERATIONS AND REPORTS
APRIL 23, 1980

