

AD-A152 905

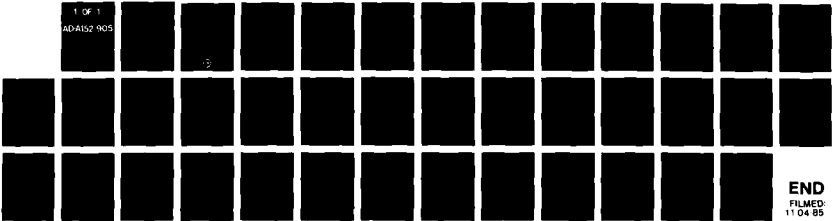
MILITARY MANPOWER STATISTICS, JANUARY, FY-80. (U)
WASHINGTON HEADQUARTERS SERVICE (DOD) DIR FOR INFO OP
& RPTS. JAN 80. DIOR/MO3-80/04

UNCLASSIFIED

F/G 5/9

N/L

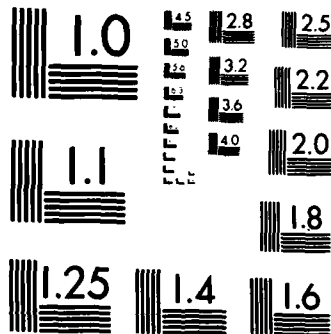
1 OF 1
AD-A152 905



END
FILMED
11 04 85

1 OF 1

AD-A152 905



MICROCOPY RESOLUTION TEST CHART
NATIONAL BUREAU OF STANDARDS-1963-A

**THIS REPORT IS UNCLASSIFIED AND
ITS DISTRIBUTION IS UNLIMITED**

MILITARY MANPOWER STATISTICS
as of



4
3
19
28
19
19
19

DEPARTMENT OF DEFENSE
WASHINGTON HEADQUARTERS SERVICES
DIRECTORATE FOR INFORMATION
OPERATIONS AND REPORTS

• • •

FOREWORD

MILITARY MANPOWER STATISTICS (MMS) is a monthly publication prepared by the Washington Headquarters Services, Directorate for Information Operations and Reports (WHS/DIOR) of the Office of the Secretary of Defense.

MMS presents audited statistical data pertaining to active duty military, reserve components, and retired military personnel of the Department of Defense. The publication is generated from a computerized data base developed and maintained by the Manpower Management Information Division of WHS/DIOR.

Requests for additional copies and changes in distribution should be addressed to the Director, Washington Headquarters Services, Room 3E843, The Pentagon, Washington, DC 20301.

TABLE OF CONTENTS

<u>Number</u>	<u>Title</u>
Table P10	Military/Civilian Personnel
Table P11	Department of Defense Manpower Comparison
Table P22.1	Total Active Duty Military Personnel by Service
Table P23.1	Active Duty Officer Personnel and Percent of Total Military Personnel by Service
Table P23.3	Total Active Duty Military Personnel by Type
Table P23.4	Army Active Duty Military Personnel by Type
Table P23.5	Navy Active Duty Military Personnel by Type
Table P23.6	Marine Corps Active Duty Military Personnel by Type
Table P23.7	Air Force Active Duty Military Personnel by Type
Table P23.41	Army Active Duty Military Personnel
Table P23.51	Navy Active Duty Military Personnel
Table P23.61	Marine Corps Active Duty Military Personnel
Table P23.71	Air Force Active Duty Military Personnel
Table P25.6	Women Military Personnel on Active Duty Officers and Enlisted by Service
Table P26.0	Military Personnel on Active Duty by Grade in Which Serving
Table P26.04	Military Personnel on Active Duty by Grade in Which Serving - Regular

Number

Title

Table P26.05	Military Personnel on Active Duty by Grade in Which Serving - Reserve
Table P27.1	Summary of Enlisted Personnel Procurement
Table P27.21	Army Enlisted Personnel Procurement
Table P27.22	Navy Enlisted Personnel Procurement
Table P27.23	Marine Corps Enlisted Personnel Procurement
Table P27.24	Air Force Enlisted Personnel Procurement
Table R11.0	Reserve Component Strength Summary
Table R12.0	Reserve Strength - Officer and Enlisted Not on Active Duty
Table R13.0	Ready Reserve and Active Duty Strength Compared to Statutory Limitation
Table R14.0	Reserve Component Personnel by Reserve Category Not on Active Duty - Total
Table R14.0	Reserve Component Personnel by Reserve Category Not on Active Duty - Officers
Table R14.0	Reserve Component Personnel by Reserve Category Not on Active Duty - Enlisted
Table R18.0	Selected Reserve
Table R21.0	Reserve Personnel on Active Duty by Component
Table R22.0	Reserve Strength on Active Duty
Table R23.0	Reserve Personnel by Component and Category Not on Active Duty
Table R24.0	Reserve Strength Not on Active Duty
Table R26.5	Selected Reserve Drill Pay Strength

TABLE P10

DEPARTMENT OF DEFENSE
MILITARY/CIVILIAN PERSONNEL

	TOTAL DOD	ARMY	NAVY	MARINE CORPS	AIR FORCE
1. ACTIVE DUTY MILITARY AS OF 31 JAN 1980					
OFFICER	273,149	96,670	61,989	18,011	96,479
ENLISTED	1,742,745	665,093	456,746	164,009	456,897
ACADEMY CADETS	12,737	4,153	4,444	-	4,140
TOTAL ACTIVE DUTY MILITARY	2,028,631	765,916	523,179	182,020	557,516
2. GUARD AND RESERVES AS OF 31 JAN 1980					
NATIONAL GUARD IN PAID STATUS	447,812	354,014	-	-	93,798
	443,148	349,522	-	-	93,626
RESERVES IN PAID STATUS	1,681,834	833,203	333,036	99,317	416,278
	369,711	192,448	87,182	33,080	57,001
TOTAL GUARD AND RESERVES IN PAID STATUS	2,129,646	1,187,217	333,036	99,317	510,076
	812,859	541,970	87,182	33,080	150,627
3. OFFICER TRAINING IN COLLEGES A/ AS OF OCTOBER 1979					
	93,295	65,186	7,633	-	20,476
4. CIVILIAN PERSONNEL - MILITARY AND CIVIL FUNCTIONS B/					
AS OF 31 JAN 1980	TOTAL DOD	ARMY	C/ NAVY	AIR FORCE	OTHER D/ DEFENSE AGENCIES
DIRECT HIRE	963,598	345,598	309,088	232,708	76,204
INDIRECT HIRE	74,479	48,988	10,639	13,091	1,761
TOTAL CIVILIAN PERSONNEL	1,038,077	394,586	319,727	245,799	77,965

A/ EXCLUDES 166,212 IN JUNIOR DIVISION, MILITARY
SCHOOLS AND NATIONAL DEFENSE CADETS CORPS.

B/ INCLUDES CIVIL FUNCTIONS EMPLOYMENT OF
32,856 ARMY AND AIR FORCE, ALSO INCLUDES
DISADVANTAGED YOUTH EMPLOYEES.

C/ INCLUDES MARINE CORPS PERSONNEL.

D/ INCLUDES OSD/JCS.

DEPARTMENT OF DEFENSE
WASHINGTON HEADQUARTERS SERVICES
DIRECTORATE FOR INFORMATION
OPERATIONS AND REPORTS
MAY 28, 1980

TABLE F11
DOD MANPOWER COMPARISON
(MILITARY & CIVIL FUNCTIONS)

DATE	TOTAL DOD	ARMY			AIR FORCE			NAVY AND MARINE CORPS			A/ OSD/ JCS	
		MILI-TARY	B/ CIVIL- IAN	TOTAL	MILI-TARY	B/ CIVIL- IAN	TOTAL	NAVY MILI-TARY	MARINE CORPS MILI-TARY	B/ CIVIL- IAN		TOTAL
31 OCT 78	3,039,492	768,695	352,741	1,121,436	569,785	240,342	810,127	528,869	190,624	311,361	1,030,854	77,075
30 NOV 78	3,031,627	764,299	351,565	1,115,864	568,999	240,455	809,454	527,958	189,101	312,072	1,029,131	77,178
31 DEC 78	3,018,684	756,645	350,396	1,107,041	567,003	239,622	806,625	529,178	187,928	310,951	1,028,057	76,961
31 JAN 79	3,011,743	757,822	347,168	1,104,990	566,831	238,190	805,021	527,234	187,888	310,094	1,025,216	76,516
28 FEB 79	3,004,857	755,497	346,805	1,102,302	565,767	237,598	803,365	526,050	186,669	310,109	1,022,828	76,362
31 MAR 79	2,993,929	751,294	346,675	1,098,169	564,611	235,237	799,848	524,922	185,518	309,298	1,019,738	76,174
30 APR 79	2,989,659	750,831	346,791	1,097,622	563,061	234,896	797,957	524,202	183,997	309,939	1,018,138	75,942
31 MAY 79	2,990,789	749,815	349,691	1,099,506	561,649	235,553	797,202	523,649	183,186	310,950	1,017,785	76,296
30 JUN 79	3,002,360	752,468	357,050	1,109,518	562,419	237,785	800,204	524,514	184,269	313,164	1,021,947	70,691
31 JUL 79	3,008,607	756,714	358,047	1,114,761	561,825	238,664	800,489	522,268	185,884	314,613	1,022,765	70,592
31 AUG 79	2,997,877	758,992	351,581	1,110,573	559,984	235,645	795,629	519,512	185,143	311,652	1,016,317	75,358
30 SEP 79	2,987,780	758,852	346,694	1,105,546	558,455	234,249	793,704	523,937	185,250	303,472	1,012,659	75,871
31 OCT 79	2,993,174	763,922	345,338	1,109,260	559,216	233,289	792,505	521,887	184,539	308,633	1,015,059	76,350
30 NOV 79	2,996,675	765,602	347,628	1,113,230	558,462	233,730	792,192	521,337	183,796	309,486	1,014,619	76,634
31 DEC 79	2,987,435	759,620	347,564	1,107,184	556,861	233,406	790,267	521,857	181,902	309,334	1,013,093	76,891
31 JAN 80	2,952,229	765,916	345,598	1,111,514	557,516	232,708	790,224	523,179	182,020	309,088	1,014,287	76,204

A/ CIVILIAN PERSONNEL. MILITARY PERSONNEL ASSIGNED TO OSD, OJCS AND OTHER DEFENSE ACTIVITIES ARE REPORTED BY THEIR RESPECTIVE SERVICES.

B/ -TOTAL PAID EMPLOYEES- AS REPORTED OFFICIALLY TO THE OFFICE OF PERSONNEL MANAGEMENT; EXCLUDES OVERSEAS SUPPORT PERSONNEL (INDIRECT HIRE).

DEPARTMENT OF DEFENSE
WASHINGTON HEADQUARTERS SERVICES
DIRECTORATE FOR INFORMATION
OPERATIONS AND REPORTS
MAY 14, 1980

TABLE P22.1

DEPARTMENT OF DEFENSE
TOTAL ACTIVE DUTY MILITARY PERSONNEL BY SERVICE

DATE	TOTAL DOD	ARMY	NAVY	MARINE CORPS	AIR FORCE
OCT 01, 1978	2,057,973	768,695	528,869	190,624	569,785
NOV 30, 1978	2,050,357	764,299	527,958	189,101	568,999
DEC 31, 1978	2,040,754	756,645	529,178	187,928	567,003
JAN 31, 1979	2,039,775	757,822	527,234	187,888	566,831
FEB 28, 1979	2,033,983	755,497	526,050	186,669	565,767
MAR 31, 1979	2,026,345	751,294	524,922	185,518	564,611
APR 30, 1979	2,022,091	750,831	524,202	183,997	563,061
MAY 31, 1979	2,018,299	749,815	523,649	183,186	561,649
JUN 30, 1979	2,023,670	752,468	524,514	184,269	562,419
JUL 31, 1979	2,026,591	756,714	522,268	185,884	561,825
AUG 31, 1979	2,023,631	758,992	519,512	185,143	559,984
SEP 30, 1979	2,027,494	758,852	523,937	185,250	559,455
OCT 31, 1979	2,029,564	763,922	521,887	184,539	559,216
NOV 30, 1979	2,029,197	765,602	521,337	183,796	558,462
DEC 31, 1979	2,020,240	759,620	521,857	181,902	556,861
JAN 31, 1980	2,028,631	765,916	523,179	182,020	557,516

DEPARTMENT OF DEFENSE
WASHINGTON HEADQUARTERS SERVICES
DIRECTORATE FOR INFORMATION
OPERATIONS AND REPORTS
MAY 14, 1980

TABLE P23.1

DEPARTMENT OF DEFENSE
ACTIVE DUTY OFFICER PERSONNEL AND PERCENT OF TOTAL MILITARY PERSONNEL, BY SERVICE

DATE	TOTAL DOD		ARMY		NAVY		MARINE CORPS		AIR FORCE	
	NUMBER	%	NUMBER	%	NUMBER	%	NUMBER	%	NUMBER	%
OCT 31, 1978	273,464	13.3	97,277	12.7	62,331	11.8	18,411	9.7	95,445	16.8
NOV 30, 1978	272,530	13.3	96,788	12.7	62,069	11.8	18,404	9.7	95,269	16.7
DEC 31, 1978	272,181	13.3	96,461	12.7	62,375	11.8	18,307	9.7	95,038	16.8
JAN 31, 1979	271,480	13.3	96,486	12.7	61,584	11.7	18,426	9.8	94,984	16.8
FEB 28, 1979	271,085	13.3	96,384	12.8	61,548	11.7	18,423	9.9	94,730	16.7
MAR 31, 1979	270,460	13.3	96,089	12.8	61,405	11.7	18,315	9.9	94,651	16.8
APR 30, 1979	271,115	13.4	96,084	12.8	62,168	11.9	18,354	10.0	94,509	16.8
MAY 31, 1979	273,094	13.5	96,864	12.9	62,363	11.9	18,331	10.0	95,536	17.0
JUN 30, 1979	275,745	13.6	98,714	13.1	62,872	12.0	18,499	10.0	95,660	17.0
JUL 31, 1979	274,005	13.5	97,983	12.9	62,452	12.0	18,319	9.9	95,251	17.0
AUG 31, 1979	273,607	13.5	97,515	12.8	62,248	12.0	18,298	9.9	95,546	17.1
SEP 30, 1979	274,129	13.5	97,381	12.8	62,384	11.9	18,229	9.8	96,135	17.2
OCT 31, 1979	272,799	13.4	96,864	12.7	62,099	11.9	18,162	9.8	95,674	17.1
NOV 30, 1979	272,796	13.4	96,388	12.6	62,159	11.9	18,060	9.8	96,185	17.2
DEC 31, 1979	272,618	13.5	96,338	12.7	61,991	11.9	18,153	10.0	96,186	17.3
JAN 31, 1980	273,149	13.5	96,670	12.6	61,989	11.8	18,011	9.9	96,479	17.3

DEPARTMENT OF DEFENSE
WASHINGTON HEADQUARTERS SERVICES
DIRECTORATE FOR INFORMATION
OPERATIONS AND REPORTS
MAY 14, 1980

TABLE P23.3

DEPARTMENT OF DEFENSE
TOTAL ACTIVE DUTY MILITARY PERSONNEL BY TYPE

DATE	OFFICERS	ENLISTED	A/ OFFICER CANDIDATES	TOTAL
OCT 31, 1978	273,464	1,771,491	13,018	2,057,973
NOV 30, 1978	272,530	1,764,887	12,940	2,050,357
DEC 31, 1978	272,181	1,755,712	12,861	2,040,754
JAN 31, 1979	271,480	1,755,585	12,710	2,039,775
FEB 28, 1979	271,085	1,750,237	12,661	2,033,983
MAR 31, 1979	270,460	1,743,362	12,523	2,026,345
APR 30, 1979	271,115	1,738,535	12,441	2,022,091
MAY 31, 1979	273,094	1,733,782	11,423	2,018,299
JUN 30, 1979	275,745	1,736,931	10,994	2,023,670
JUL 31, 1979	274,005	1,740,527	12,159	2,026,691
AUG 31, 1979	273,607	1,736,815	13,209	2,023,631
SEP 30, 1979	274,129	1,740,260	13,105	2,027,494
OCT 31, 1979	272,799	1,743,775	12,990	2,029,564
NOV 30, 1979	272,796	1,743,472	12,929	2,029,197
DEC 31, 1979	272,618	1,734,707	12,915	2,020,240
JAN 31, 1980	273,149	1,742,745	12,737	2,028,631

A/ CONSISTS OF THE FOLLOWING:
FOR ARMY - CADETS, U. S. MILITARY ACADEMY
FOR NAVY - MIDSHPMEN, U. S. NAVAL ACADEMY
FOR AIR FORCE - CADETS, U. S. AIR FORCE ACADEMY

DEPARTMENT OF DEFENSE
WASHINGTON HEADQUARTERS SERVICES
DIRECTORATE FOR INFORMATION
OPERATIONS AND REPORTS
MAY 14, 1980

TABLE P23.4

DEPARTMENT OF DEFENSE
ARMY ACTIVE DUTY MILITARY PERSONNEL BY TYPE

DATE	OFFICERS	ENLISTED	CADETS		TOTAL
			U. S. MILITARY	ACADEMY	
AUG 31, 1979	97,277	667,155	4,263		768,695
NOV 30, 1979	96,788	663,301	4,210		764,299
DEC 31, 1979	96,461	655,979	4,205		756,645
JAN 31, 1979	96,486	657,143	4,193		757,822
FEB 28, 1979	96,324	654,924	4,189		755,497
MAR 31, 1979	96,089	651,090	4,115		751,294
APR 30, 1979	96,084	650,651	4,096		750,831
MAY 31, 1979	96,864	648,868	4,083		749,815
JUN 30, 1979	98,714	650,556	3,198		752,468
JUL 31, 1979	97,983	654,225	4,506		756,714
AUG 31, 1979	97,515	657,140	4,337		758,992
SEP 30, 1979	97,381	657,184	4,267		758,852
OCT 31, 1979	96,864	662,620	4,238		763,922
NOV 30, 1979	96,388	665,009	4,205		765,602
DEC 31, 1979	96,338	659,109	4,173		759,620
JAN 31, 1980	96,670	665,093	4,153		765,916

DEPARTMENT OF DEFENSE
WASHINGTON HEADQUARTERS SERVICES
DIRECTORATE FOR INFORMATION
OPERATIONS AND REPORTS
MAY 14, 1980

TABLE P23.5

DEPARTMENT OF DEFENSE
NAVY ACTIVE DUTY MILITARY PERSONNEL BY TYPE

DATE	OFFICERS	ENLISTED	MIDSHIPMEN		TOTAL
			U. S. NAVAL	ACADEMY	
OCT 31, 1978	62,331	462,151	4,367		528,869
NOV 30, 1978	62,069	461,514	4,375		527,958
DEC 31, 1978	62,375	462,431	4,372		529,178
JAN 31, 1979	61,584	461,315	4,335		527,234
FEB 28, 1979	61,548	460,179	4,323		526,050
MAR 31, 1979	61,405	459,237	4,280		524,922
APR 30, 1979	62,168	457,802	4,232		524,202
MAY 31, 1979	62,363	457,091	4,195		523,649
JUN 30, 1979	62,872	458,409	3,233		524,514
JUL 31, 1979	62,452	456,608	3,208		522,268
AUG 31, 1979	62,248	452,754	4,470		519,512
SEP 30, 1979	62,384	457,102	4,451		523,937
OCT 31, 1979	62,099	455,366	4,422		521,887
NOV 30, 1979	62,159	454,768	4,410		521,337
DEC 31, 1979	61,991	455,390	4,476		521,857
JAN 31, 1980	61,969	456,746	4,444		523,179

DEPARTMENT OF DEFENSE
WASHINGTON HEADQUARTERS SERVICES
DIRECTORATE FOR INFORMATION
OPERATIONS AND REPORTS
MAY 14, 1980

TABLE P23.6

DEPARTMENT OF DEFENSE
MARINE CORPS ACTIVE DUTY MILITARY PERSONNEL BY TYPE

DATE	OFFICERS	ENLISTED	TOTAL
OCT 31, 1973	18,411	172,213	190,624
NOV 30, 1978	18,404	170,697	189,101
DEC 31, 1978	18,307	169,621	187,928
JAN 31, 1979	18,426	169,462	187,888
FEB 28, 1979	18,423	168,246	186,669
MAR 31, 1979	18,315	167,203	185,518
APR 30, 1979	18,354	165,643	183,997
MAY 31, 1979	18,331	164,855	183,186
JUN 30, 1979	18,499	165,770	184,269
JUL 31, 1979	18,319	167,565	185,884
AUG 31, 1979	18,298	166,845	185,143
SEP 30, 1979	18,229	167,021	185,250
OCT 31, 1979	18,162	166,377	184,539
NOV 30, 1979	18,060	165,736	183,796
DEC 31, 1979	18,103	163,799	181,902
JAN 31, 1980	18,011	164,009	182,020

DEPARTMENT OF DEFENSE
WASHINGTON HEADQUARTERS SERVICES
DIRECTORATE FOR INFORMATION
OPERATIONS AND REPORTS
MAY 14, 1980

TABLE P23.7

DEPARTMENT OF DEFENSE
AIR FORCE ACTIVE DUTY MILITARY PERSONNEL BY TYPE

DATE	OFFICERS	ENLISTED	CADETS U.S.A.F. ACADEMY	TOTAL
OCT 31, 1978	95,445	469,972	4,368	569,785
NOV 30, 1978	95,269	469,375	4,355	568,999
DEC 31, 1978	95,038	467,681	4,284	567,003
JAN 31, 1979	94,984	467,665	4,182	566,831
FEB 28, 1979	94,730	466,889	4,149	565,767
MAR 31, 1979	94,651	465,832	4,128	564,611
APR 30, 1979	94,509	464,439	4,113	563,061
MAY 31, 1979	95,536	462,968	3,145	561,649
JUN 30, 1979	95,660	462,196	4,563	562,419
JUL 31, 1979	95,251	462,129	4,445	561,825
AUG 31, 1979	95,546	460,036	4,402	559,984
SEP 30, 1979	96,135	458,953	4,367	559,455
OCT 31, 1979	95,674	459,212	4,330	559,216
NOV 30, 1979	96,189	457,959	4,314	558,462
DEC 31, 1979	96,186	456,409	4,266	556,861
JAN 31, 1980	96,479	456,897	4,140	557,516

DEPARTMENT OF DEFENSE
WASHINGTON HEADQUARTERS SERVICES
DIRECTORATE FOR INFORMATION
OPERATIONS AND REPORTS
MAY 14, 1980

TABLE P23.41

DEPARTMENT OF DEFENSE
ARMY ACTIVE DUTY MILITARY PERSONNEL

REPORTED STRENGTH, AND ADJUSTMENTS TO REPORTED STRENGTH TO DERIVE "DIRECT PROGRAM STRENGTH" CHARGEABLE TO
APPROPRIATION "MILITARY PERSONNEL, ARMY"

DATE	REPORTED STRENGTH		A/ (LESS) EXCLUDABLES		TOTAL PROGRAM STRENGTH		(LESS) REIMBURSABLES		TOTAL	OFFICER	ENLISTED	CADETS USMA
	TOTAL	ENL	OFF	ENL	TOTAL	OFF	ENL	TOTAL				
30 OCT 1978	768,695	2	487	2	768,206	645	352	767,209	96,145	666,801	4,263	
30 NOV 1978	764,299	2	494	2	763,803	626	340	762,837	95,668	662,959	4,210	
31 DEC 1978	756,645	2	496	2	756,147	620	356	755,171	95,345	655,621	4,205	
31 JAN 1979	757,822	2	498	2	757,322	603	311	756,408	95,385	656,830	4,193	
29 FEB 1979	755,497	2	499	2	754,996	583	292	754,121	95,302	654,630	4,189	
31 MAR 1979	751,294	3	497	3	750,794	527	226	750,041	95,065	650,861	4,115	
30 APR 1979	750,831	3	502	3	750,326	510	197	749,619	95,072	650,451	4,096	
31 MAY 1979	749,815	3	499	3	749,313	507	188	748,618	95,858	648,677	4,083	
30 JUN 1979	752,468	3	484	3	751,981	455	168	751,356	97,775	650,385	3,198	
31 JUL 1979	756,714	4	485	4	756,225	421	162	755,642	97,077	654,059	4,506	
31 AUG 1979	758,992	4	487	4	758,501	410	159	757,932	96,618	656,977	4,337	
30 SEP 1979	758,852	4	492	4	758,356	390	156	757,810	96,499	657,024	4,287	
31 OCT 1979	763,922	3	495	3	763,424	391	154	762,879	95,978	662,663	4,238	
30 NOV 1979	765,502	3	502	3	765,097	389	157	764,551	95,497	664,849	4,205	
31 DEC 1979	759,620	3	500	3	759,117	388	156	758,573	95,450	658,950	4,173	
31 JAN 1980	765,916	2	513	2	765,401	401	160	764,640	95,756	664,931	4,153	

ACTIVE DUTY PERSONNEL PAID BY AN APPROPRIATION OTHER THAN MILITARY PERSONNEL, ARMY, AND EXCLUDED FROM THE END STRENGTH OF THE ARMY, COMPRISED OF CIVIL WORKS PERSONNEL, AND USAR AND ARNG PERSONNEL ON STATUTORY TOURS.

DEPARTMENT OF DEFENSE
WASHINGTON HEADQUARTERS SERVICES
DIRECTORATE FOR INFORMATION
OPERATIONS AND REPORTS
MAY 15, 1980

TABLE P23.51

DEPARTMENT OF DEFENSE
NAVY ACTIVE DUTY MILITARY PERSONNEL

REPORTED STRENGTH, AND ADJUSTMENTS TO REPORTED STRENGTH TO DERIVE "DIRECT PROGRAM STRENGTH" CHARGEABLE TO APPROPRIATION "MILITARY PERSONNEL, NAVY"

DATE	REPORTED STRENGTH	(LESS)		TOTAL PROGRAM STRENGTH	(LESS)		TOTAL	DIRECT PROGRAM STRENGTH CHARGEABLE TO APPROPRIATION "MILITARY PERSONNEL, NAVY"		OFFICER CANDIDATES
		PAID FROM A/ RES PERS APPN	STRENGTH		REIMBURSABLES	ENLISTED		OFFICER	ENLISTED	
31 OCT 1978	528,869	198	528,671	461	1,527	526,683	61,672	460,624	4,387	
30 NOV 1978	527,958	201	527,757	467	1,571	525,719	61,401	459,943	4,375	
31 DEC 1978	529,178	203	528,975	470	1,444	527,061	61,702	460,987	4,372	
31 JAN 1979	527,234	203	527,031	459	1,548	525,024	60,922	459,767	4,335	
29 FEB 1979	526,050	200	525,850	451	1,587	523,812	60,897	458,592	4,323	
31 MAR 1979	524,922	198	524,724	441	1,606	522,677	60,766	457,631	4,280	
30 APR 1979	524,202	203	523,999	442	1,607	521,950	61,523	456,195	4,232	
31 MAY 1979	523,649	200	523,449	435	1,596	521,418	61,728	455,495	4,195	
30 JUN 1979	524,514	202	524,312	424	1,616	522,272	62,246	456,793	3,233	
31 JUL 1979	522,268	197	522,071	408	1,577	520,086	61,847	455,031	3,208	
31 AUG 1979	519,512	194	519,318	434	1,529	517,355	61,620	451,265	4,470	
30 SEP 1979	523,937	195	523,742	410	1,480	521,852	61,779	455,622	4,451	
31 OCT 1979	521,887	194	521,693	394	1,469	519,830	61,511	453,897	4,422	
30 NOV 1979	521,337	195	521,142	400	1,484	519,256	61,564	453,284	4,410	
31 DEC 1979	521,657	194	521,663	412	1,469	519,782	61,385	453,921	4,476	
31 JAN 1980	523,179	194	522,985	416	1,470	521,096	61,379	455,276	4,444	

NAVAL RESERVE PERSONNEL ON ACTIVE DUTY UNDER PROVISIONS OF SEC. 265, TITLE 10, U.S. CODE PAID FROM THE NAVAL RESERVE PERSONNEL APPROPRIATION.

DEPARTMENT OF DEFENSE
WASHINGTON HEADQUARTERS SERVICES
DIRECTORATE FOR INFORMATION
OPERATIONS AND REPORTS
MAY 15, 1980

TABLE P20.61

DEPARTMENT OF DEFENSE
MARINE CORPS ACTIVE DUTY MILITARY PERSONNEL

REPORTED STRENGTH, AND ADJUSTMENTS TO REPORTED STRENGTH TO DERIVE "DIRECT PROGRAM STRENGTH" CHARGEABLE TO APPROPRIATION "MILITARY PERSONNEL, MARINE CORPS"

DATE	REPORTED STRENGTH	(LESS) PAID FROM A/ RES PERS APPN	TOTAL PROGRAM STRENGTH	(LESS) REIMBURSABLES	TOTAL	OFFICER ENLISTED	OFFICER	ENLISTED	TOTAL	DIRECT PROGRAM STRENGTH CHARGEABLE TO APPN. "MILITARY PERSONNEL, MARINE CORPS"	OFFICER ENLISTED	OFFICER	ENLISTED	OFFICER CANDIDATES
31 OCT 1978	190,624	62	190,562	20	189,035	1	18,329	172,212	190,541	18,319	170,696	-	-	-
30 NOV 1978	189,101	65	187,863	21	187,822	1	18,221	169,620	187,800	18,339	169,461	-	-	-
31 DEC 1978	187,928	66	186,669	20	185,454	1	18,231	168,245	185,433	18,269	167,202	-	-	-
31 JAN 1979	187,888	64	186,603	20	183,932	1	18,246	165,642	183,911	18,246	164,854	-	-	-
28 FEB 1979	186,669	65	184,205	21	185,799	1	18,235	167,564	184,184	18,216	166,844	-	-	-
31 MAR 1979	185,518	63	185,821	21	185,082	1	18,145	167,020	185,060	18,145	167,020	-	-	-
30 APR 1979	183,997	63	185,187	21	184,475	1	18,077	166,376	184,453	18,077	166,376	-	-	-
30 MAY 1979	183,186	65	184,731	21	183,709	1	17,974	165,735	183,709	17,974	165,735	-	-	-
30 JUN 1979	184,269	64	181,838	21	181,816	1	18,018	163,798	181,816	18,018	163,798	-	-	-
31 JUL 1979	185,884	61	181,956	21	181,934	1	17,925	164,008	181,934	17,925	164,008	-	-	-
31 AUG 1979	185,143	63	184,539	21	184,475	1	18,077	166,376	184,453	18,077	166,376	-	-	-
30 SEP 1979	185,250	63	184,731	21	183,709	1	17,974	165,735	183,709	17,974	165,735	-	-	-
31 OCT 1979	184,539	64	181,838	21	181,816	1	18,018	163,798	181,816	18,018	163,798	-	-	-
30 NOV 1979	183,796	65	181,956	21	181,934	1	17,925	164,008	181,934	17,925	164,008	-	-	-
30 DEC 1979	181,902	64	181,956	21	181,934	1	17,925	164,008	181,934	17,925	164,008	-	-	-
31 JAN 1980	182,020	64	181,956	21	181,934	1	17,925	164,008	181,934	17,925	164,008	-	-	-

MARINE CORPS RESERVE PERSONNEL ON ACTIVE DUTY UNDER PROVISIONS OF SEC. 265, TITLE 10, U.S. CODE PAID FROM THE MARINE CORPS RESERVE PERSONNEL APPROPRIATION.

DEPARTMENT OF DEFENSE
WASHINGTON HEADQUARTERS SERVICES
DIRECTORATE FOR INFORMATION
OPERATIONS AND REPORTS
MAY 15, 1980

TABLE P23.71

DEPARTMENT OF DEFENSE
AIR FORCE ACTIVE DUTY MILITARY PERSONNEL

REPORTED STRENGTH, AND ADJUSTMENTS TO REPORTED STRENGTH TO DERIVE "DIRECT PROGRAM STRENGTH" CHARGEABLE TO APPROPRIATION "MILITARY PERSONNEL, AIR FORCE"

DATE	REPORTED STRENGTH	(LESS) ANG/AFR	TOTAL PROGRAM STRENGTH	(LESS) REIMBURSABLES	OFFICER ENLISTED	TOTAL	OFFICER ENLISTED	USAF & AVCADS
31 OCT 1978	569,785	224	569,561					
30 NOV 1978	568,999	225	568,774					
31 DEC 1978	567,003	221	566,782					
31 JAN 1979	566,831	224	565,607					
28 FEB 1979	565,767	226	565,541					
31 MAR 1979	564,611	230	564,381					
30 APR 1979	563,061	230	562,831					
31 MAY 1979	561,640	231	561,418					
30 JUN 1979	562,419	230	562,189					
31 JUL 1979	561,825	228	561,597					
31 AUG 1979	559,984	222	559,762					
30 SEP 1979	559,455	235	559,220					
31 OCT 1979	559,216	233	558,983					
30 NOV 1979	558,462	236	558,226					
31 DEC 1979	556,861	234	556,627					
31 JAN 1980	557,516	243	557,273					

DEPARTMENT OF DEFENSE
WASHINGTON HEADQUARTERS SERVICES
DIRECTORATE FOR INFORMATION
OPERATIONS AND REPORTS
MAY 15, 1980

TABLE P25.6

DEPARTMENT OF DEFENSE
WOMEN MILITARY PERSONNEL ON ACTIVE DUTY, OFFICERS, AND ENLISTED BY SERVICE

DATE	TOTAL OGD				ARMY				NAVY				MARINE CORPS				AIR FORCE							
	TOTAL	ENL AND OFF CAND		TOTAL	OFF	ENL	TOTAL	ENL AND OFF CAND		TOTAL	OFF	ENL	TOTAL	ENL AND OFF CAND		TOTAL	OFF	ENL	TOTAL	ENL AND OFF CAND		TOTAL	OFF	ENL
		OFF	ENL					OFF	ENL					OFF	ENL					OFF	ENL			
31 OCT 78	135,444	16,877	118,567	57,090	6,348	50,742	25,673	4,032	21,641	5,143	429	4,714	47,538	6,068	41,470									
30 NOV 78	136,417	16,931	119,486	57,035	6,323	50,712	25,897	4,036	21,861	5,156	443	4,713	48,329	6,129	42,200									
31 DEC 78	136,702	16,965	119,737	56,358	6,299	50,059	26,351	4,092	22,259	5,138	443	4,695	48,855	6,131	42,724									
31 JAN 79	137,987	17,079	120,908	56,857	6,340	50,517	26,545	4,050	22,495	5,306	447	4,859	49,279	6,242	43,037									
28 FEB 79	138,834	17,257	121,577	57,094	6,419	50,675	26,334	4,071	22,263	5,369	440	4,929	50,037	6,327	43,710									
31 MAR 79	140,255	17,345	122,910	56,969	6,437	50,532	26,843	4,077	22,766	5,413	436	4,977	51,030	6,395	44,635									
30 APR 79	141,621	17,442	124,179	57,289	6,462	50,827	27,463	4,100	23,363	5,466	455	5,011	51,403	6,425	44,978									
31 MAY 79	145,156	17,794	125,362	57,673	6,645	51,028	27,873	4,116	23,757	5,474	456	5,018	52,136	6,577	45,559									
30 JUN 79	145,341	18,023	127,318	58,673	6,737	51,938	28,191	4,135	24,056	5,518	453	5,065	52,957	6,698	46,259									
31 JUL 79	146,816	18,272	128,544	59,595	6,775	52,820	28,571	4,203	24,368	5,721	447	5,274	52,929	6,847	46,082									
31 AUG 79	148,707	18,465	130,242	61,248	6,788	54,460	28,705	4,206	24,499	5,710	443	5,267	53,044	7,028	46,016									
30 SEP 79	151,082	18,959	132,123	62,017	6,866	55,151	29,402	4,358	25,044	5,960	459	5,501	53,703	7,276	46,427									
31 OCT 79	153,265	19,050	134,215	63,806	6,961	56,845	29,855	4,378	25,477	5,922	456	5,466	53,682	7,255	46,427									
30 NOV 79	155,902	19,209	136,693	64,666	6,873	57,795	30,366	4,432	25,934	6,026	456	5,570	54,842	7,448	47,394									
31 DEC 79	156,851	19,241	137,610	64,425	6,882	57,543	31,077	4,410	26,667	6,057	464	5,593	55,292	7,485	47,807									
31 JAN 80	159,231	19,470	139,761	65,503	6,907	58,596	31,610	4,488	27,122	6,143	482	5,661	55,975	7,593	48,382									

DEPARTMENT OF DEFENSE
WASHINGTON HEADQUARTERS SERVICES
DIRECTORATE FOR INFORMATION
OPERATIONS AND REPORTS
MAY 15, 1980

TABLE P26.0

DEPARTMENT OF DEFENSE
MILITARY PERSONNEL ON ACTIVE DUTY BY GRADE IN WHICH SERVING A/
JANUARY 31, 1980

RANK/GRADE	TOTAL DOD	ARMY	NAVY	MARINE CORPS	AIR FORCE
GENERAL OF ARMY - FLEET ADMIRAL	1	1	-	-	-
GENERAL - ADMIRAL	32	10	8	2	12
LT GENERAL - VICE ADMIRAL	109	32	32	7	38
MAJ GENERAL - REAR ADMIRAL (U)	407	168	88	23	128
BRIG GENERAL - REAR ADMIRAL (L)	556	212	131	34	179
COLONEL - CAPTAIN	13,965	4,519	3,626	563	5,257
LIEUTENANT COL - COMMANDER	32,512	11,058	7,155	1,477	12,822
MAJOR - LT COMMANDER	49,546	16,345	11,691	2,984	18,526
CAPTAIN - LIEUTENANT	85,192	26,882	17,065	4,861	36,384
1ST LIEUTENANT - LIEUTENANT (JG)	35,679	11,773	10,295	4,030	9,581
2ND LIEUTENANT - ENSIGN	37,970	12,519	9,040	2,860	13,551
CHIEF WARRANT OFFICER W-4	2,181	1,385	579	216	1
CHIEF WARRANT OFFICER W-3	4,361	3,882	430	49	-
CHIEF WARRANT OFFICER W-2	7,780	5,246	1,841	693	-
WARRANT OFFICER W-1	2,858	2,638	8	212	-
TOTAL OFFICERS	273,149	96,670	61,989	18,011	96,479
E-9	12,889	3,787	3,352	1,271	4,479
E-8	33,578	13,118	8,457	3,200	8,603
E-7	117,806	45,863	30,638	8,496	32,809
E-6	200,902	71,551	64,559	12,804	51,988
E-5	318,103	117,513	79,985	22,654	97,950
E-4	395,103	170,847	94,473	26,119	103,664
E-3	323,126	96,301	84,692	42,460	99,673
E-2	159,264	60,718	45,708	25,346	27,492
E-1	181,974	85,395	44,881	21,659	30,039
TOTAL ENLISTED	1,742,745	665,093	456,746	164,009	456,897
CADETS & MIDSHIPMEN	12,737	4,153	4,444	-	4,140
GRAND TOTAL	2,028,631	765,916	523,179	182,020	557,516

A/ INCLUDES REIMBURSABLE ACTIVE DUTY MILITARY PAY STRENGTHS AND ACTIVE DUTY MILITARY PERSONNEL PAID FROM CIVIL FUNCTIONS, RESERVE, AND NATIONAL GUARD APPROPRIATIONS.

DEPARTMENT OF DEFENSE
WASHINGTON HEADQUARTERS SERVICES
DIRECTORATE FOR INFORMATION OPERATIONS AND REPORTS
MAY 14, 1980

TABLE P26.04

DEPARTMENT OF DEFENSE
MILITARY PERSONNEL ON ACTIVE DUTY BY GRADE IN WHICH SERVING

REGULAR A/

JANUARY 31, 1980

RANK/GRADE	TOTAL DOD	ARMY	NAVY	MARINE CORPS	AIR FORCE
GENERAL OF ARMY - FLEET ADMIRAL	1	1	-	-	-
GENERAL - ADMIRAL	32	10	8	2	12
LT GENERAL - VICE ADMIRAL	108	31	32	7	36
MAJ GENERAL - REAR ADMIRAL (U)	399	166	87	23	123
BRIG GENERAL - REAR ADMIRAL (L)	350	210	130	33	177
COLONEL - CAPTAIN	13,252	4,260	3,474	537	4,981
LIFUTENANT COL. - COMMANDER	29,095	9,213	6,701	1,456	11,725
MAJOR - LT COMMANDER	36,840	9,723	10,156	2,861	14,100
CAPTAIN - LIEUTENANT	48,354	11,331	12,633	4,193	21,197
1ST LIEUTENANT - LIEUTENANT (JG)	14,214	4,067	6,208	2,053	1,886
2ND LIEUTENANT - ENSIGN	11,757	4,470	4,568	873	1,846
CHIEF WARRANT OFFICER W-4	1,690	909	571	209	1
CHIEF WARRANT OFFICER W-3	2,286	1,813	427	46	-
CHIEF WARRANT OFFICER W-2	3,513	1,000	1,827	586	-
WARRANT OFFICER W-1	226	8	8	212	-
TOTAL OFFICERS	163,319	47,212	46,830	13,191	56,086
E-9	12,752	3,787	3,225	1,266	4,474
E-8	33,223	13,116	8,122	2,186	6,797
E-7	116,509	45,653	29,402	5,461	32,793
E-6	197,720	71,529	61,434	12,777	51,980
E-5	313,832	117,489	75,794	22,608	57,941
E-4	388,242	170,506	87,995	26,111	103,630
E-3	309,173	94,532	72,754	42,457	59,430
E-2	145,481	58,242	34,551	25,344	27,344
E-1	170,274	84,727	33,855	21,658	30,034
TOTAL ENLISTED	1,667,206	659,781	407,132	163,870	456,423
REGULAR TOTAL	1,850,525	706,993	453,962	177,061	512,509

A/ REGULAR PLUS RETIRED REGULAR
OFFICERS ON ACTIVE DUTY.

DEPARTMENT OF DEFENSE
WASHINGTON HEADQUARTERS SERVICES
DIRECTORATE FOR INFORMATION
OPERATIONS AND REPORTS
MAY 14, 1980

TABLE P26.05
DEPARTMENT OF DEFENSE
MILITARY PERSONNEL ON ACTIVE DUTY BY GRADE IN WHICH SERVING
RESERVE A/

JANUARY 31, 1980

RANK/GRADE	ARMY	NAVY	MARINE CORPS	AIR FORCE
GENERAL OF ARMY - FLEET ADMIRAL	-	-	-	-
GENERAL - ADMIRAL	-	-	-	-
LT GENERAL - VICE ADMIRAL	1	-	-	-
MAJ GENERAL - REAR ADMIRAL (U)	8	1	-	5
BRIG GENERAL - REAR ADMIRAL (L)	6	1	1	2
COLONEL - CAPTAIN	713	152	26	276
LIEUTENANT COL - COMMANDER	3,417	454	21	1,097
MAJOR - LT COMMANDER	12,706	1,535	123	4,426
CAPTAIN - LIEUTENANT	35,836	4,432	668	15,187
1ST LIEUTENANT - LIEUTENANT (JG)	21,465	4,087	1,977	7,695
2ND LIEUTENANT - ENSIGN	26,213	4,472	1,987	11,705
CHIEF WARRANT OFFICER W-4	491	8	7	-
CHIEF WARRANT OFFICER W-3	2,075	3	3	-
CHIEF WARRANT OFFICER W-2	4,267	14	7	-
WARRANT OFFICER W-1	2,630	-	-	-
TOTAL OFFICERS	109,830	15,159	4,820	40,393
E-9	137	127	5	5
E-8	355	335	12	6
E-7	1,297	1,236	35	16
E-6	3,182	3,125	31	6
E-5	4,271	4,192	45	9
E-4	6,861	6,473	5	34
E-3	13,953	11,936	5	243
E-2	13,783	11,157	2	146
E-1	11,700	11,026	1	5
TOTAL ENLISTED	55,539	49,614	132	474
RESERVE TOTAL	165,369	64,770	4,953	40,867

A/ INCLUDES RESERVE NATIONAL GUARD,
AUS, AND AIFUS OFFICERS ON ACTIVE
DUTY.

DEPARTMENT OF DEFENSE
WASHINGTON HEADQUARTERS SERVICES
DIRECTORATE FOR INFORMATION
OPERATIONS AND REPORTS
MAY 14, 1980

TABLE P27.1

DEPARTMENT OF DEFENSE
SUMMARY OF ENLISTED PERSONNEL PROCUREMENT
FISCAL YEAR 1980

	OCT 1979	NOV 1979	DEC 1979	JAN 1980	FEB 1980	MAR 1980
TOTAL DEPARTMENT OF DEFENSE	52,500	46,109	33,431	53,224		
INDUCTIONS	-	-	-	-	-	-
FIRST ENLISTMENTS	31,154	26,620	17,681	32,445		
IMMEDIATE REENLISTMENTS	16,587	15,356	13,635	15,393		
OTHER REENLISTMENTS	2,140	1,899	1,507	2,500		
RESERVES TO ACTIVE DUTY A/	2,619	2,234	608	2,886		
ARMY	26,059	22,055	13,723	26,015		
INDUCTIONS	-	-	-	-	-	-
FIRST ENLISTMENTS	16,528	13,447	6,260	15,852		
IMMEDIATE REENLISTMENTS	7,220	6,963	6,483	7,786		
OTHER REENLISTMENTS	1,496	1,115	675	1,459		
RESERVES TO ACTIVE DUTY	815	530	305	918		
NAVY	9,997	9,525	6,743	11,630		
INDUCTIONS	-	-	-	-	-	-
FIRST ENLISTMENTS	5,448	4,912	4,420	6,691		
IMMEDIATE REENLISTMENTS	2,468	2,491	1,712	2,504		
OTHER REENLISTMENTS	329	462	394	549		
RESERVES TO ACTIVE DUTY	1,752	1,660	217	1,886		
MARINE CORPS	4,596	3,897	3,252	4,340		
INDUCTIONS	-	-	-	-	-	-
FIRST ENLISTMENTS	2,796	2,730	1,869	3,151		
IMMEDIATE REENLISTMENTS	1,652	995	1,013	878		
OTHER REENLISTMENTS	102	132	288	239		
RESERVES TO ACTIVE DUTY	46	40	82	72		
AIR FORCE	11,848	10,632	9,713	11,239		
INDUCTIONS	-	-	-	-	-	-
FIRST ENLISTMENTS	6,382	5,531	5,132	6,751		
IMMEDIATE REENLISTMENTS	5,247	4,907	4,427	4,225		
OTHER REENLISTMENTS	213	190	150	253		
RESERVES TO ACTIVE DUTY	6	4	4	10		

A/ INCLUDES NATIONAL GUARD.

DEPARTMENT OF DEFENSE
WASHINGTON HEADQUARTERS SERVICES
DIRECTORATE FOR INFORMATION
OPERATIONS AND REPORTS
MAY 28, 1980

TABLE P27.21

DEPARTMENT OF DEFENSE
ARMY ENLISTED PERSONNEL PROCUREMENT
FISCAL YEAR 1980

	OCT 1979	NOV 1979	DEC 1979	JAN 1980	FEB 1980	MAR 1980
TOTAL	26,059	22,055	13,723	26,015		
REGULAR ENL. AND REENL. - TOTAL	25,244	21,525	13,418	25,097		
FIRST ENLISTMENTS	16,528	13,447	6,260	15,852		
REENLISTMENTS - TOTAL	8,716	8,078	7,158	9,245		
IMMEDIATE REENLISTMENTS	7,220	6,963	6,483	7,786		
FORMER REGULAR	7,170	6,895	6,445	7,731		
FORMER RESERVE & N.G.	50	68	38	55		
FORMER INDUCTEE	-	-	-	-		
REENL. OTHER THAN IMMEDIATE	1,496	1,115	675	1,459		
WITHIN 2-90 DAYS AFTER SEPARATION	252	169	118	186		
FORMER REGULAR	85	47	28	48		
FORMER RESERVE & N.G.	139	102	83	126		
FORMER INDUCTEE	10	10	4	12		
FORMER OFFICER	18	10	3	-		
OVER 90 DAYS AFTER SEPARATION	1,244	946	557	1,273		
INDUCTIONS	-	-	-	-		
RESERVES AND N.G. CALLS	815	530	305	918		

DEPARTMENT OF DEFENSE
WASHINGTON HEADQUARTERS SERVICES
DIRECTORATE FOR INFORMATION
OPERATIONS AND REPORTS
MAY 28, 1980

TABLE P27.22

 DEPARTMENT OF DEFENSE
 NAVY ENLISTED PERSONNEL PROCUREMENT
 FISCAL YEAR 1980

	OCT 1979	NOV 1979	DEC 1979	JAN 1980	FEB 1980	MAR 1980
TOTAL	9,997	9,525	6,743	11,630		
REGULAR ENL. AND REENL. - TOTAL	8,245	7,865	6,526	9,744		
FIRST ENLISTMENTS	5,448	4,912	4,420	6,691		
REENLISTMENTS - TOTAL	2,797	2,953	2,106	3,053		
IMMEDIATE REENLISTMENTS	2,468	2,491	1,712	2,504		
FORMER REGULAR	2,380	2,406	1,679	2,372		
FORMER RESERVE	88	85	33	132		
REENL. OTHER THAN IMMEDIATE	329	462	394	549		
WITHIN 2-90 DAY'S AFTER SEPARATION	71	94	63	100		
FORMER REGULAR	71	94	63	100		
FORMER RESERVE	-	-	-	-		
OVER 90 DAYS AFTER SEPARATION	258	368	331	449		
INDUCTIONS	-	-	-	-		
RESERVES TO ACTIVE DUTY	1,752	1,660	217	1,886		
FIRST ENLISTMENTS	252	286	155	272		
REENLISTMENTS	83	82	49	82		
REPORTED TO ACTIVE DUTY	1,417	1,292	13	1,532		

 DEPARTMENT OF DEFENSE
 WASHINGTON HEADQUARTERS SERVICES
 DIRECTORATE FOR INFORMATION
 OPERATIONS AND REPORTS
 MAY 28, 1980

TABLE P27.23

DEPARTMENT OF DEFENSE
MARINE CORPS ENLISTED PERSONNEL PROCUREMENT
FISCAL YEAR 1980

	OCT 1979	NOV 1979	DEC 1979	JAN 1980	FEB 1980	MAR 1980
TOTAL	4,596	3,897	3,252	4,340		
REGULAR ENL. AND REENL. - TOTAL	4,550	3,857	3,170	4,268		
FIRST ENLISTMENTS	2,796	2,730	1,869	3,151		
REENLISTMENTS - TOTAL	1,754	1,127	1,301	1,117		
IMMEDIATE REENLISTMENTS	1,652	995	1,013	878		
FORMER REGULAR A/ FORMER RESERVE	1,606	966	968	834		
FORMER INDUCTEE	46	29	45	44		
REENL. OTHER THAN IMMEDIATE	102	132	288	239		
WITHIN 2-90 DAYS AFTER SEPARATION	1	1	13	3		
FORMER REGULAR	1	1	5	3		
FORMER RESERVE	-	-	8	-		
FORMER INDUCTEE	-	-	-	-		
OVER 90 DAYS AFTER SEPARATION B/	101	131	275	236		
INDUCTIONS	-	-	-	-		
RESERVES TO ACTIVE DUTY	46	40	82	72		
FIRST ENLISTMENTS REENLISTMENTS REPORTED TO ACTIVE DUTY	-	-	-	-		
	46	40	82	72		

A/ INCLUDES EXTENSIONS FOR WHICH REENLISTMENT BONUS IS PAID.

B/ INCLUDES ENLISTMENTS OF FORMER OFFICERS.

DEPARTMENT OF DEFENSE
WASHINGTON HEADQUARTERS SERVICES
DIRECTORATE FOR INFORMATION
OPERATIONS AND REPORTS
MAY 28, 1980

TABLE P27.24

DEPARTMENT OF DEFENSE
AIR FORCE ENLISTED PERSONNEL PROCUREMENT
FISCAL YEAR 1980

	OCT 1979	NOV 1979	DEC 1979	JAN 1980	FEB 1980	MAR 1980
TOTAL	11,848	10,632	9,713	11,239		
REGULAR ENL. AND REENL. - TOTAL	11,842	10,628	9,709	11,229		
FIRST ENLISTMENTS	6,382	5,531	5,132	6,751		
REENLISTMENTS - TOTAL	5,460	5,097	4,577	4,478		
IMMEDIATE REENLISTMENTS	5,247	4,907	4,427	4,225		
FORMER REGULAR FORMER RESERVE & N.G.	5,247	4,907	4,426	4,225		
REENL. OTHER THAN IMMEDIATE	213	190	150	253		
WITHIN 2-90 DAYS AFTER SEPARATION	-	-	-	-		
FORMER REGULAR FORMER RESERVE & N.G.	-	-	-	-		
OVER 90 DAYS AFTER SEPARATION A/	213	190	150	253		
INDUCTIONS	-	-	-	-		
RESERVES & N.G. TO ACTIVE DUTY	6	4	4	10		

A/ INCLUDES ENLISTMENTS OF FORMER COMMISSIONED AND WARRANT OFFICERS.

DEPARTMENT OF DEFENSE
WASHINGTON HEADQUARTERS SERVICES
DIRECTORATE FOR INFORMATION
OPERATIONS AND REPORTS
MAY 28, 1980

TABLE R11.0
 DEPARTMENT OF DEFENSE
 RESERVE COMPONENT STRENGTH SUMMARY

JANUARY 31, 1980

RESERVES BY RESERVE CATEGORY			
TYPE OF DUTY	TOTAL	OFFICER	ENLISTED A/
TOTAL	2,129,646	662,563	1,467,083
READY RESERVE			
NOT ON ACTIVE DUTY	1,223,082	182,745	1,040,337
ACTIVE STATUS	1,220,097	182,074	1,038,013
INACTIVE STATUS B/	2,995	671	2,324
STANDBY RESERVE			
ON ACTIVE STATUS	99,484	82,281	17,203
INACTIVE STATUS	31,109	16,216	14,893
	68,375	66,065	2,310
RETIRED - RETIRED STATUS	807,080	397,537	409,543

A/ INCLUDES OFFICER CANDIDATES.

B/ INACTIVE NATIONAL GUARD AND REP'S IN NON-PAY STATUS.

RESERVES IN "PAID STATUS"			
PAY GROUP	TOTAL	OFFICER	ENLISTED
SELECTED RESERVE	812,859	115,097	697,762
DRILL PAY STATUS	789,438	115,097	674,341
INITIAL ACTIVE DUTY TRAINING	23,421	-	23,421

DEPARTMENT OF DEFENSE
 WASHINGTON HEADQUARTERS SERVICES
 DIRECTORATE FOR INFORMATION
 OPERATIONS AND REPORTS
 MAY 28, 1980

TABLE R12.0

DEPARTMENT OF DEFENSE
RESERVE STRENGTH - OFFICER AND ENLISTED
NOT ON ACTIVE DUTY

DATE	TOTAL	OFFICERS	ENLISTED A/
31 OCT 1978	2,105,643	660,208	1,425,435
30 NOV 1978	2,099,265	680,125	1,419,140
31 DEC 1978	2,097,411	679,224	1,418,187
31 JAN 1979	2,091,285	681,729	1,409,556
28 FEB 1979	2,092,893	682,257	1,410,636
31 MAR 1979	2,092,419	679,842	1,412,577
30 APR 1979	2,096,931	680,370	1,416,561
31 MAY 1979	2,092,121	673,812	1,418,309
30 JUN 1979	2,093,845	670,942	1,422,903
31 JUL 1979	2,088,691	665,786	1,422,905
31 AUG 1979	2,175,892	649,548	1,526,344
30 SEP 1979	2,108,840	663,727	1,445,113
31 OCT 1979	2,119,750	663,212	1,456,538
30 NOV 1979	2,126,363	664,288	1,462,075
31 DEC 1979	2,130,130	663,133	1,466,997
31 JAN 1980	2,129,646	662,563	1,467,083

A/ INCLUDES OFFICER CANDIDATES.

DEPARTMENT OF DEFENSE
WASHINGTON HEADQUARTERS SERVICES
DIRECTORATE FOR INFORMATION
OPERATIONS AND REPORTS
MAY 28, 1980

TABLE R13.0

DEPARTMENT OF DEFENSE
 READY RESERVE AND ACTIVE DUTY STRENGTH COMPARED TO STATUTORY LIMITATION
 JANUARY 31, 1980

	TOTAL	ON ACTIVE DUTY	NOT ON ACTIVE DUTY
STATUTORY READY RESERVE LIMITATION A/	2,900,000		
SHORTFALL	1,490,434		
READY RESERVE AND ACTIVE DUTY STRENGTH	1,409,566	166,349	1,243,217
COAST GUARD RESERVE	21,115	980	20,135
DOD RESERVE	1,388,451	165,369	1,223,082
ARMY	809,609	54,770	754,839
NATIONAL GUARD B/	355,821	1,807	354,014
ARMY RESERVE	453,788	52,963	400,825
NAVAL RESERVE	245,197	64,773	180,424
MARINE CORPS RESERVE	96,717	4,959	91,758
AIR FORCE	236,928	40,867	196,061
AIR NATIONAL GUARD C/	94,104	306	93,798
AIR FORCE RESERVE	142,824	40,561	102,263

A/ SECTION 205(B), ARMED FORCES RESERVE ACT OF 1952, AS AMENDED.
 B/ INCLUDES "INACTIVE NATIONAL GUARD" NUMBERING 2,995 AND REP'S NUMBERING 1,497.
 C/ INCLUDES REP'S IN A NON-PAY STATUS NUMBERING 172.

DEPARTMENT OF DEFENSE
 WASHINGTON HEADQUARTERS SERVICES
 DIRECTORATE FOR INFORMATION
 OPERATIONS AND REPORTS
 MAY 28, 1980

TABLE R14.0

DEPARTMENT OF DEFENSE
RESERVE COMPONENT PERSONNEL BY RESERVE CATEGORY
NOT ON ACTIVE DUTY

TOTAL

DATE	TOTAL	READY	STANDBY	RETIRED
31 OCT 1978	2,105,643	1,145,651	168,144	791,848
30 NOV 1978	2,099,265	1,147,552	157,931	793,782
31 DEC 1978	2,097,411	1,151,253	152,595	793,563
31 JAN 1979	2,091,285	1,151,135	144,227	795,923
28 FEB 1979	2,092,893	1,157,516	139,035	796,342
31 MAR 1979	2,092,419	1,166,155	132,679	793,585
30 APR 1979	2,096,931	1,172,987	127,626	796,318
31 MAY 1979	2,092,121	1,175,846	118,255	798,020
30 JUN 1979	2,093,845	1,181,098	113,011	799,736
31 JUL 1979	2,088,691	1,178,602	108,634	801,455
31 AUG 1979	2,175,892	1,194,813	106,425	874,654
30 SEP 1979	2,108,840	1,202,642	103,421	802,777
31 OCT 1979	2,119,750	1,213,769	103,160	802,821
30 NOV 1979	2,126,363	1,220,242	101,822	804,299
31 DEC 1979	2,130,130	1,223,844	101,554	804,732
31 JAN 1980	2,129,646	1,223,082	99,484	807,080

TABLE R14.0

DEPARTMENT OF DEFENSE
RESERVE COMPONENT PERSONNEL BY RESERVE CATEGORY
NOT ON ACTIVE DUTY

OFFICERS

DATE	TOTAL	READY	STANDBY	RETIRED
31 OCT 1978	680,208	191,477	95,981	392,750
30 NOV 1978	680,125	191,899	95,173	393,053
31 DEC 1978	679,224	189,816	96,841	392,567
31 JAN 1979	681,729	190,394	96,725	394,610
28 FEB 1979	682,257	190,556	95,874	394,827
31 MAR 1979	679,842	190,908	95,841	393,093
30 APR 1979	680,370	191,072	94,805	394,493
31 MAY 1979	673,812	189,569	88,988	395,255
30 JUN 1979	670,942	187,138	88,256	395,548
31 JUL 1979	665,786	183,868	85,830	396,088
31 AUG 1979	649,548	182,709	85,453	381,386
30 SEP 1979	663,727	182,710	84,836	396,181
31 OCT 1979	663,212	182,299	84,561	396,352
30 NOV 1979	664,288	183,819	83,693	396,776
31 DEC 1979	663,133	182,559	83,665	393,909
31 JAN 1980	662,563	182,745	82,281	397,537

TABLE R14.0
 DEPARTMENT OF DEFENSE
 RESERVE COMPONENT PERSONNEL BY RESERVE CATEGORY
 NOT ON ACTIVE DUTY

DATE	TOTAL	READY	STANDBY	RETIRED
31 OCT 1978	1,425,435	954,174	72,163	399,098
30 NOV 1978	1,419,140	955,653	62,758	400,729
31 DEC 1978	1,418,187	961,437	55,754	400,996
31 JAN 1979	1,409,556	960,741	47,502	401,313
28 FEB 1979	1,410,636	966,960	42,161	401,515
31 MAR 1979	1,412,577	975,247	36,838	400,492
30 APR 1979	1,416,561	981,915	32,821	401,825
31 MAY 1979	1,418,309	986,277	29,267	402,765
30 JUN 1979	1,422,903	993,960	24,755	404,188
31 JUL 1979	1,422,905	994,734	22,804	405,367
31 AUG 1979	1,526,344	1,012,104	20,972	493,268
30 SEP 1979	1,445,113	1,019,932	18,585	406,596
31 OCT 1979	1,456,538	1,031,470	18,599	406,469
30 NOV 1979	1,462,075	1,036,423	18,129	407,523
31 DEC 1979	1,466,997	1,041,285	17,889	407,823
31 JAN 1980	1,467,083	1,040,337	17,203	409,543

A/ INCLUDES OFFICER CANDIDATES.

TABLE R18.0

DEPARTMENT OF DEFENSE
SELECTED RESERVE

DATE	TOTAL	DRILL PAY STATUS	INITIAL ACTIVE DUTY TRAINING
31 OCT 1978	786,866	762,851	24,015
30 NOV 1978	786,360	762,164	24,196
31 DEC 1978	785,852	764,005	21,847
31 JAN 1979	786,762	764,610	22,152
28 FEB 1979	790,326	768,656	21,670
31 MAR 1979	793,081	770,712	22,369
30 APR 1979	795,506	773,314	22,192
31 MAY 1979	796,598	773,949	22,649
30 JUN 1979	797,919	769,577	28,342
31 JUL 1979	799,766	768,380	31,386
31 AUG 1979	800,597	769,446	31,151
30 SEP 1979	807,136	778,226	28,910
31 OCT 1979	805,869	778,318	27,551
30 NOV 1979	808,630	781,895	26,735
31 DEC 1979	810,860	787,399	23,461
31 JAN 1980	812,859	789,438	23,421

DEPARTMENT OF DEFENSE
WASHINGTON HEADQUARTERS SERVICES
DIRECTORATE FOR INFORMATION
OPERATIONS AND REPORTS
MAY 28, 1980

TABLE R21.0
 DEPARTMENT OF DEFENSE
 RESERVE PERSONNEL ON ACTIVE DUTY BY COMPONENT
 JANUARY 31, 1980

COMPONENT/PERSONNEL	TOTAL	OFFICER	ENLISTED A/
TOTAL DEPARTMENT OF DEFENSE	165,369	109,830	55,539
ARMY - TOTAL	54,770	49,458	5,312
NATIONAL GUARD OF THE U. S.	1,807	472	1,335
ARMY RESERVE	52,963	48,986	3,977
NAVAL RESERVE	64,773	15,159	49,614
MARINE CORPS RESERVE	4,959	4,820	139
AIR FORCE - TOTAL	40,867	40,393	474
AIR NATIONAL GUARD OF THE U. S.	306	162	144
AIR FORCE RESERVE	40,561	40,231	330

A/ INCLUDES OFFICER CANDIDATES.

DEPARTMENT OF DEFENSE
 WASHINGTON HEADQUARTERS SERVICES
 DIRECTORATE FOR INFORMATION
 OPERATIONS AND REPORTS
 MAY 28, 1980

TABLE R22.0

DEPARTMENT OF DEFENSE
RESERVE STRENGTH ON ACTIVE DUTY A/

DATE	TOTAL DOD	ARMY				AIR FORCE		
		NATIONAL GUARD	ARMY RESERVE	NAVAL RESERVE	MARINE CORPS RESERVE	AIR NATIONAL GUARD	AIR FORCE RESERVE	
31 OCT 1978	158,674	1,561	52,165	59,761	5,624	300	39,263	
30 NOV 1978	158,346	1,545	51,787	59,811	5,616	300	39,287	
31 DEC 1978	157,997	1,553	51,667	60,225	5,579	318	38,655	
31 JAN 1979	158,234	1,508	51,903	60,180	5,538	314	38,791	
28 FEB 1979	158,246	1,523	52,062	60,658	5,433	208	38,362	
31 MAR 1979	158,602	1,488	52,095	60,832	5,232	312	38,643	
30 APR 1979	159,171	1,477	51,994	61,414	5,181	302	38,803	
31 MAY 1979	159,769	1,454	52,025	61,560	5,109	297	39,324	
30 JUN 1979	161,927	1,477	53,184	61,924	5,164	295	39,883	
31 JUL 1979	161,680	1,588	52,558	62,170	5,325	293	39,746	
31 AUG 1979	161,881	1,592	52,467	61,987	5,126	286	40,423	
30 SEP 1979	165,089	1,617	52,924	63,836	5,060	299	41,353	
31 OCT 1979	165,200	1,790	52,850	64,014	5,119	299	41,128	
30 NOV 1979	165,287	1,792	52,495	64,179	5,076	301	41,444	
31 DEC 1979	164,506	1,700	52,196	64,423	5,025	296	40,866	
31 JAN 1980	165,369	1,807	52,963	64,773	4,959	306	40,561	

A/ CONTINUOUS OR EXTENDED ACTIVE DUTY.
EXCLUDES ACTIVE DUTY FOR RESERVE TRAINING.

DEPARTMENT OF DEFENSE
WASHINGTON HEADQUARTERS SERVICES
DIRECTORATE FOR INFORMATION
OPERATIONS AND REPORTS
MAY 28, 1980

TABLE R23.0

DEPARTMENT OF DEFENSE
RESERVE PERSONNEL BY COMPONENT AND CATEGORY
NOT ON ACTIVE DUTY

JANUARY 31, 1980

COMPONENT/ PERSONNEL	TOTAL	NAT'L GUARD OF THE U.S. A/	ARMY RESERVE	NAVAL RESERVE	MARINE CORPS RESERVE	AIR B/ NAT'L GUARD OF THE U.S.	AIR FORCE RESERVE
TOTAL	2,129,646	354,014	833,203	333,036	99,317	93,798	416,278
OFFICER	662,563	36,467	273,506	160,696	12,273	11,608	168,011
ENLISTED C/	1,467,083	317,547	559,697	172,338	87,044	82,190	248,267
READY RESERVE	1,223,082	354,014	400,825	180,424	91,758	93,798	102,263
OFFICER	182,745	36,467	73,020	33,180	6,541	11,608	21,929
ENLISTED C/	1,040,337	317,547	327,805	147,244	85,217	82,190	80,334
STANDBY RESERVE	99,484	-	28,565	25,301	2,241	-	43,377
OFFICER	82,281	-	22,008	20,450	1,965	-	37,858
ENLISTED	17,203	-	6,557	4,851	276	-	5,519
ACTIVE STATUS	31,109	-	14,642	4,729	2,165	-	9,573
OFFICER	16,216	-	8,085	59	1,889	-	6,183
ENLISTED	14,893	-	6,557	4,670	276	-	3,390
INACTIVE STATUS	68,375	-	13,923	20,572	76	-	33,604
OFFICER	66,065	-	13,923	20,391	76	-	31,675
ENLISTED	2,310	-	-	181	-	-	2,129
RETIRED RESERVE	807,080	-	403,813	127,311	5,318	-	270,638
OFFICER	397,537	-	178,478	107,068	3,767	-	108,224
ENLISTED	409,543	-	225,335	20,243	1,551	-	162,414

A/ INCLUDES "INACTIVE NATIONAL GUARD" NUMBERING 2,995 TOTAL, 671 OFFICERS, 2,324 ENLISTED AND RESERVE ENLISTMENT PROGRAM (REPS) IN A NON-PAY STATUS NUMBERING 1,497.

B/ INCLUDES REPS IN A NON-PAY STATUS NUMBERING 172.

C/ INCLUDES OFFICER CANDIDATES.

DEPARTMENT OF DEFENSE
WASHINGTON HEADQUARTERS SERVICES
DIRECTORATE FOR INFORMATION
OPERATIONS AND REPORTS
MAY 28, 1980

TABLE R24.0
 DEPARTMENT OF DEFENSE
 RESERVE STRENGTH NOT ON ACTIVE DUTY A/

DATE	TOTAL DOD	ARMY				AIR FORCE		
		B/ NATIONAL GUARD	ARMY RESERVE	NAVAL RESERVE	MARINE CORPS RESERVE	AIR NATIONAL GUARD	AIR FORCE RESERVE	
31 OCT 1978	2,105,643	348,935	816,414	339,584	97,929	91,697	411,084	
30 NOV 1978	2,099,265	347,699	815,529	336,404	97,629	91,692	410,312	
31 DEC 1978	2,097,411	347,063	816,884	334,469	97,243	91,757	409,995	
31 JAN 1979	2,091,285	347,365	812,848	331,703	97,076	91,769	410,524	
28 FEB 1979	2,092,893	349,030	814,378	330,096	97,112	91,996	410,281	
31 MAR 1979	2,092,419	349,057	817,979	328,354	95,308	92,272	409,449	
30 APR 1979	2,096,931	349,323	820,308	328,257	96,600	92,476	409,967	
31 MAY 1979	2,092,121	349,460	816,170	326,844	95,799	92,854	410,994	
30 JUN 1979	2,093,845	348,852	818,038	326,763	96,064	92,946	411,182	
31 JUL 1979	2,088,691	348,415	813,158	324,210	97,946	93,109	411,853	
31 AUG 1979	2,175,892	348,099	823,115	325,938	99,484	93,416	485,840	
30 SEP 1979	2,108,840	350,041	823,162	326,527	100,378	93,599	415,133	
31 OCT 1979	2,119,750	350,631	830,256	328,822	100,732	93,650	415,659	
30 NOV 1979	2,126,363	351,959	831,425	331,478	102,232	93,474	415,795	
31 DEC 1979	2,130,130	353,553	833,887	333,015	99,881	93,598	416,196	
31 JAN 1980	2,129,646	354,014	833,203	333,036	99,317	93,798	416,278	

A/ INCLUDES RESERVES ON ACTIVE DUTY
 FOR RESERVE TRAINING PURPOSES.

B/ INCLUDES "INACTIVE" NATIONAL GUARD.

DEPARTMENT OF DEFENSE
 WASHINGTON HEADQUARTERS SERVICES
 DIRECTORATE FOR INFORMATION
 OPERATIONS AND REPORTS
 MAY 28, 1980

TABLE R26.5

DEPARTMENT OF DEFENSE
SELECTED RESERVE DRILL PAY STRENGTH

JANUARY 31, 1980

COMPONENT/ PERSONNEL	TOTAL	DRILL PAY STATUS A/	INITIAL ACTIVE DUTY TRAINING B/
TOTAL DOD	812,859	789,438	23,421
OFFICERS	115,097	115,097	-
ENLISTED	697,762	674,341	23,421
ARMY NATIONAL GUARD	349,522	337,023	12,499
OFFICERS	35,796	35,796	-
ENLISTED	313,726	301,227	12,499
ARMY RESERVE	192,448	167,456	4,982
OFFICERS	35,476	35,476	-
ENLISTED	156,972	131,980	4,982
NAVAL RESERVE	87,182	86,436	746
OFFICERS	16,842	16,842	-
ENLISTED	70,340	69,594	746
MARINE CORPS RESERVE	33,080	30,362	2,718
OFFICERS	2,424	2,424	-
ENLISTED	30,656	27,938	2,718
AIR NATIONAL GUARD	93,626	91,888	1,738
OFFICERS	11,608	11,608	-
ENLISTED	82,018	80,280	1,738
AIR FORCE RESERVE	57,001	56,263	738
OFFICERS	12,951	12,951	-
ENLISTED	44,050	43,312	738

A/ INCLUDES PAY GROUPS A,B,C,M,P,T,Q.

B/ INCLUDES PAY GROUPS F AND U.

DEPARTMENT OF DEFENSE
WASHINGTON HEADQUARTERS SERVICES
DIRECTORATE FOR INFORMATION
OPERATIONS AND REPORTS
MAY 28, 1980

ND