

AD-A152 907

MILITARY MANPOWER STATISTICS, MARCH, FY-80. (U)
WASHINGTON HEADQUARTERS SERVICE (DOD) DIR FOR INFO
OP & RPTS. MAR 80. DIOR/MO3-80/06

1/1

UNCLASSIFIED

F/G 5/9

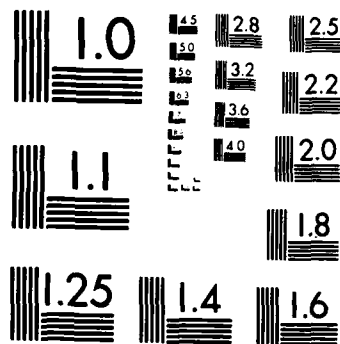
N/L

1 OF 1
AD-A152 907

END
FILMED
11 04 85

1 OF 1

AD-A152 907



MICROCOPY RESOLUTION TEST CHART
NATIONAL BUREAU OF STANDARDS-1963-A

**THIS REPORT IS UNCLASSIFIED AND
ITS DISTRIBUTION IS UNLIMITED**

MILITARY MANPOWER STATISTICS

as of MARCH 1980



4
3
1980

DEPARTMENT OF DEFENSE
WASHINGTON HEADQUARTERS SERVICES
DIRECTORATE FOR INFORMATION
OPERATIONS AND REPORTS

FOREWORD

MILITARY MANPOWER STATISTICS (MMS) is a monthly publication prepared by the Washington Headquarters Services, Directorate for Information Operations and Reports (WHS/DIOR) of the Office of the Secretary of Defense.

MMS presents audited statistical data pertaining to active duty military, reserve components, and retired military personnel of the Department of Defense. The publication is generated from a computerized data base developed and maintained by the Manpower Management Information Division of WHS/DIOR.

Requests for additional copies and changes in distribution should be addressed to the Director, Washington Headquarters Services, Room 3E843, The Pentagon, Washington, DC 20301.

TABLE OF CONTENTS

<u>Number</u>	<u>Title</u>
Table P10	Military/Civilian Personnel
Table P11	Department of Defense Manpower Comparison
Table P22.1	Total Active Duty Military Personnel by Service
Table P23.1	Active Duty Officer Personnel and Percent of Total Military Personnel by Service
Table P23.3	Total Active Duty Military Personnel by Type
Table P23.4	Army Active Duty Military Personnel by Type
Table P23.5	Navy Active Duty Military Personnel by Type
Table P23.6	Marine Corps Active Duty Military Personnel by Type
Table P23.7	Air Force Active Duty Military Personnel by Type
Table P23.41	Army Active Duty Military Personnel
Table P23.51	Navy Active Duty Military Personnel
Table P23.61	Marine Corps Active Duty Military Personnel
Table P23.71	Air Force Active Duty Military Personnel
Table P25.6	Women Military Personnel on Active Duty Officers and Enlisted by Service
Table P26.0	Military Personnel on Active Duty by Grade in Which Serving
Table P26.02	Female Military Personnel on Active Duty by Grade in Which Serving
Table P26.04	Military Personnel on Active Duty by Grade in Which Serving - Regular

Number

Title

Table P26.05	Military Personnel on Active Duty by Grade in Which Serving - Reserve
• Table P27.1	Summary of Enlisted Personnel Procurement
• Table P27.21	Army Enlisted Personnel Procurement
• Table P27.22	Navy Enlisted Personnel Procurement
Table P27.23	Marine Corps Enlisted Personnel Procurement
Table P27.24	Air Force Enlisted Personnel Procurement
Table P29.20-29.34	Reenlistment Rates by Service
Table R11.0	Reserve Component Strength Summary
Table R12.0	Reserve Strength - Officer and Enlisted Not on Active Duty
Table R13.0	Ready Reserve and Active Duty Strength Compared to Statutory Limitation
Table R14.0	Reserve Component Personnel by Reserve Category Not on Active Duty - Total
Table R14.0	Reserve Component Personnel by Reserve Category Not on Active Duty - Officers
Table R14.0	Reserve Component Personnel by Reserve Category Not on Active Duty - Enlisted
Table R18.0	Selected Reserve
• Table R21.0	Reserve Personnel on Active Duty by Component
• Table R22.0	Reserve Strength on Active Duty
• Table R23.0	Reserve Personnel by Component and Category Not on Active Duty
Table R24.0	Reserve Strength Not on Active Duty
Table R26.5	Selected Reserve Drill Pay Strength

TABLE P10

DEPARTMENT OF DEFENSE
MILITARY/CIVILIAN PERSONNEL

	TOTAL DOD	ARMY	NAVY	MARINE CORPS	AIR FORCE
1. ACTIVE DUTY MILITARY AS OF 31 MAR 1980					
OFFICER ENLISTED ACADEMY CADETS	273,173 1,747,346 12,548	96,313 666,426 4,080	62,070 459,327 4,390	18,125 164,203 -	96,665 457,390 4,078
TOTAL ACTIVE DUTY MILITARY	2,033,067	766,819	525,787	182,328	558,133
2. GUARD AND RESERVES AS OF 31 MAR 1980					
NATIONAL GUARD IN PAID STATUS	452,360 447,162	358,056 353,077	- -	- -	94,304 94,085
RESERVES IN PAID STATUS	1,679,805 371,186	831,281 193,802	333,175 86,713	98,180 33,406	417,169 57,265
TOTAL GUARD AND RESERVES IN PAID STATUS	2,132,165 818,348	1,189,337 546,879	333,175 86,713	98,180 33,406	511,473 151,350
3. OFFICER TRAINING IN COLLEGES A/ AS OF OCTOBER 1979					
	93,295	65,186	7,633	-	20,476
4. CIVILIAN PERSONNEL - MILITARY AND CIVIL FUNCTIONS B/					
AS OF 31 MAR 1980	TOTAL DOD	ARMY	C/ NAVY	AIR FORCE	OTHER D/ DEFENSE AGENCIES
DIRECT HIRE	966,266	346,858	310,241	232,898	76,269
INDIRECT HIRE	74,525	49,000	10,656	13,128	1,739
TOTAL CIVILIAN PERSONNEL	1,040,791	395,858	320,899	246,026	78,008

A/ EXCLUDES 166,212 IN JUNIOR DIVISION, MILITARY SCHOOLS AND NATIONAL DEFENSE CADETS CORPS.

B/ INCLUDES CIVIL FUNCTIONS EMPLOYMENT OF 33,252 ARMY AND AIR FORCE, ALSO INCLUDES DISADVANTAGED YOUTH EMPLOYEES.

C/ INCLUDES MARINE CORPS PERSONNEL.
D/ INCLUDES OSD/JCS.

DEPARTMENT OF DEFENSE
WASHINGTON HEADQUARTERS SERVICES
DIRECTORATE FOR INFORMATION
OPERATIONS AND REPORTS

TABLE P11
 DOD MANPOWER COMPARISON
 (MILITARY & CIVIL FUNCTIONS)

DATE	TOTAL DOD	ARMY			AIR FORCE			NAVY AND MARINE CORPS			A/ OSD/ JCS	
		MILI-TARY	CIVIL- IAN	TOTAL	MILI-TARY	B/ CIVIL- IAN	TOTAL	NAVY MILI-TARY	MARINE CORPS MILI-TARY	B/ CIVIL- IAN		TOTAL
31 OCT 78	3,039,492	768,695	352,741	1,121,436	569,785	240,342	810,127	528,869	190,624	311,361	1,030,854	77,075
30 NOV 78	3,031,627	764,299	351,565	1,115,864	568,999	240,455	809,454	527,958	189,101	312,072	1,029,131	77,176
31 DEC 78	3,018,684	756,645	350,395	1,107,041	567,003	239,622	806,625	529,178	187,928	310,951	1,028,057	76,961
31 JAN 79	3,011,743	757,822	347,168	1,104,990	566,831	238,190	805,021	527,234	187,888	310,094	1,025,216	76,516
28 FEB 79	3,004,857	755,497	346,805	1,102,302	565,767	237,598	803,365	526,050	186,669	310,109	1,022,828	76,362
31 MAR 79	2,993,929	751,294	346,875	1,098,169	564,611	235,237	799,848	524,922	185,518	309,298	1,019,738	76,174
30 APR 79	2,989,659	750,831	346,791	1,097,622	563,061	234,896	797,957	524,202	183,997	309,939	1,018,138	75,942
31 MAY 79	2,990,789	749,815	349,691	1,099,506	561,649	235,553	797,202	523,649	183,186	310,950	1,017,785	76,296
30 JUN 79	3,002,360	752,468	357,050	1,109,518	562,419	237,785	800,204	524,514	184,269	313,164	1,021,947	70,691
31 JUL 79	3,008,607	756,714	358,047	1,114,761	561,825	238,664	800,489	522,268	185,884	314,613	1,022,765	70,592
31 AUG 79	2,997,877	758,992	351,581	1,110,573	559,984	235,645	795,629	519,512	185,143	311,662	1,016,317	75,358
30 SEP 79	2,987,780	758,852	346,694	1,105,546	559,455	234,249	793,704	523,937	185,250	303,472	1,012,659	75,871
31 OCT 79	2,993,174	763,922	345,338	1,109,260	559,216	233,289	792,505	521,887	184,539	308,633	1,015,059	76,350
30 NOV 79	2,996,675	765,602	347,626	1,113,230	558,462	233,730	792,192	521,337	183,796	309,486	1,014,619	76,634
31 DEC 79	2,987,435	759,620	347,564	1,107,184	556,861	233,406	790,267	521,857	181,902	309,334	1,013,093	76,891
31 JAN 80	2,992,229	765,916	345,598	1,111,514	557,516	232,708	790,224	523,179	182,020	309,088	1,014,287	76,204
28 FEB 80	2,996,916	766,680	344,948	1,111,628	557,883	233,771	791,654	525,485	182,358	309,392	1,017,235	76,399
31 MAR 80	2,999,333	766,819	346,856	1,113,677	558,133	232,898	791,031	525,787	182,328	310,241	1,018,356	76,269

A/ CIVILIAN PERSONNEL. MILITARY PERSONNEL ASSIGNED TO OSD, OJCS AND OTHER DEFENSE ACTIVITIES ARE REPORTED BY THEIR RESPECTIVE SERVICES.

B/ -TOTAL PAID EMPLOYEES- AS REPORTED OFFICIALLY TO THE OFFICE OF PERSONNEL MANAGEMENT; EXCLUDES OVERSEAS SUPPORT PERSONNEL (INDIRECT HIRÉ).

DEPARTMENT OF DEFENSE
 WASHINGTON HEADQUARTERS SERVICES
 DIRECTORATE FOR INFORMATION
 OPERATIONS AND REPORTS

TABLE P22.1

DEPARTMENT OF DEFENSE
TOTAL ACTIVE DUTY MILITARY PERSONNEL BY SERVICE

DATE	TOTAL DOD	ARMY	NAVY	MARINE CORPS	AIR FORCE
OCT 31, 1978	2,057,973	768,695	528,869	190,624	569,785
NOV 30, 1978	2,050,357	764,299	527,958	189,101	568,999
DEC 31, 1978	2,040,754	756,645	529,178	187,928	567,003
JAN 31, 1979	2,039,775	757,822	527,234	187,888	566,831
FEB 28, 1979	2,033,983	755,497	526,050	186,669	565,767
MAR 31, 1979	2,026,345	751,294	524,922	185,518	564,611
APR 30, 1979	2,022,091	750,831	524,202	183,997	563,061
MAY 31, 1979	2,018,299	749,815	523,649	183,186	561,649
JUN 30, 1979	2,023,670	752,468	524,514	184,269	562,419
JUL 31, 1979	2,026,691	756,714	522,268	185,884	561,825
AUG 31, 1979	2,023,631	758,992	519,512	185,143	559,984
SEP 30, 1979	2,027,494	758,852	523,937	185,250	559,455
OCT 31, 1979	2,029,564	763,922	521,887	184,539	559,216
NOV 30, 1979	2,029,197	765,602	521,337	183,796	558,462
DEC 31, 1979	2,020,240	759,620	521,857	181,902	556,861
JAN 31, 1980	2,028,631	765,916	523,179	182,020	557,516
FEB 28, 1980	2,032,406	766,680	525,485	182,358	557,883
MAR 31, 1980	2,033,067	766,819	525,787	182,328	558,133

DEPARTMENT OF DEFENSE
WASHINGTON HEADQUARTERS SERVICES
DIRECTORATE FOR INFORMATION
OPERATIONS AND REPORTS

TABLE P23.1

DEPARTMENT OF DEFENSE
ACTIVE DUTY OFFICER PERSONNEL AND PERCENT OF TOTAL MILITARY PERSONNEL, BY SERVICE

DATE	TOTAL DOD		ARMY		NAVY		MARINE CORPS		AIR FORCE	
	NUMBER	%	NUMBER	%	NUMBER	%	NUMBER	%	NUMBER	%
OCT 31, 1978	273,464	13.3	97,277	12.7	62,331	11.8	18,411	9.7	95,445	16.8
NOV 30, 1978	272,530	13.3	96,788	12.7	62,069	11.8	18,404	9.7	95,269	16.7
DEC 31, 1978	272,181	13.3	96,461	12.7	62,375	11.8	18,307	9.7	95,038	16.8
JAN 31, 1979	271,480	13.3	96,486	12.7	61,584	11.7	18,426	9.8	94,984	16.8
FEB 28, 1979	271,085	13.3	96,384	12.8	61,548	11.7	18,423	9.9	94,730	16.7
MAR 31, 1979	270,460	13.3	96,089	12.8	61,405	11.7	18,315	9.9	94,651	16.8
APR 30, 1979	271,115	13.4	96,084	12.8	62,168	11.9	18,354	10.0	94,509	16.8
MAY 31, 1979	273,094	13.5	96,864	12.9	62,363	11.9	18,331	10.0	95,536	17.0
JUN 30, 1979	275,745	13.6	98,714	13.1	62,872	12.0	18,499	10.0	95,660	17.0
JUL 31, 1979	274,005	13.5	97,983	12.9	62,452	12.0	18,319	9.9	95,251	17.0
AUG 31, 1979	273,607	13.5	97,515	12.8	62,248	12.0	18,298	9.9	95,546	17.1
SEP 30, 1979	274,129	13.5	97,381	12.8	62,384	11.9	18,229	9.8	96,135	17.2
OCT 31, 1979	272,799	13.4	96,864	12.7	62,099	11.9	18,162	9.8	95,674	17.1
NOV 30, 1979	272,796	13.4	96,388	12.6	62,159	11.9	18,060	9.8	96,189	17.2
DEC 31, 1979	272,618	13.5	96,338	12.7	61,991	11.9	18,103	10.0	96,186	17.3
JAN 31, 1980	273,149	13.5	96,670	12.6	61,989	11.8	18,011	9.9	96,479	17.3
FEB 28, 1980	273,009	13.4	96,320	12.6	61,999	11.8	18,169	10.0	96,521	17.3
MAR 31, 1980	273,173	13.4	96,313	12.6	62,070	11.8	18,125	9.9	96,665	17.3

DEPARTMENT OF DEFENSE
WASHINGTON HEADQUARTERS SERVICES
DIRECTORATE FOR INFORMATION
OPERATIONS AND REPORTS

TABLE P23.3

DEPARTMENT OF DEFENSE
TOTAL ACTIVE DUTY MILITARY PERSONNEL BY TYPE

DATE	OFFICERS	ENLISTED	A/ OFFICER CANDIDATES	TOTAL
OCT 31, 1978	273,464	1,771,491	13,018	2,057,973
NOV 30, 1978	272,530	1,764,887	12,940	2,050,357
DEC 31, 1978	272,181	1,755,712	12,861	2,040,754
JAN 31, 1979	271,480	1,755,585	12,710	2,039,775
FEB 28, 1979	271,085	1,750,237	12,661	2,033,983
MAR 31, 1979	270,460	1,743,362	12,523	2,026,345
APR 30, 1979	271,115	1,738,535	12,441	2,022,091
MAY 31, 1979	273,094	1,733,782	11,423	2,018,299
JUN 30, 1979	275,745	1,736,931	10,994	2,023,670
JUL 31, 1979	274,005	1,740,527	12,159	2,026,691
AUG 31, 1979	273,607	1,736,815	13,209	2,023,631
SEP 30, 1979	274,129	1,740,260	13,105	2,027,494
OCT 31, 1979	272,799	1,743,775	12,990	2,029,564
NOV 30, 1979	272,796	1,743,472	12,929	2,029,197
DEC 31, 1979	272,618	1,734,707	12,915	2,020,240
JAN 31, 1980	273,149	1,742,745	12,737	2,028,631
FEB 28, 1980	273,009	1,746,703	12,694	2,032,406
MAR 31, 1980	273,173	1,747,346	12,548	2,033,067

A/ CONSISTS OF THE FOLLOWING:
FOR ARMY - CADETS, U. S. MILITARY ACADEMY
FOR NAVY - MIDSHPMEN, U. S. NAVAL ACADEMY
FOR AIR FORCE - CADETS, U. S. AIR FORCE ACADEMY

DEPARTMENT OF DEFENSE
WASHINGTON HEADQUARTERS SERVICES
DIRECTORATE FOR INFORMATION
OPERATIONS AND REPORTS

TABLE P23.4

DEPARTMENT OF DEFENSE
ARMY ACTIVE DUTY MILITARY PERSONNEL BY TYPE

DATE	OFFICERS	ENLISTED	CADETS U.S. MILITARY ACADEMY	TOTAL
OCT 31, 1978	97,277	667,155	4,263	768,695
NOV 30, 1978	96,788	663,301	4,210	764,299
DEC 31, 1978	96,461	655,979	4,205	756,645
JAN 31, 1979	96,486	657,143	4,193	757,822
FEB 28, 1979	96,384	654,924	4,189	755,497
MAR 31, 1979	96,089	651,090	4,115	751,294
APR 30, 1979	96,084	650,651	4,096	750,831
MAY 31, 1979	96,864	648,868	4,083	749,815
JUN 30, 1979	98,714	650,556	3,198	752,468
JUL 31, 1979	97,983	654,225	4,506	756,714
AUG 31, 1978	97,515	657,140	4,337	758,992
SEP 30, 1979	97,381	657,184	4,287	758,852
OCT 31, 1979	96,864	662,820	4,238	763,922
NOV 30, 1979	96,388	665,009	4,205	765,602
DEC 31, 1979	96,338	659,109	4,173	759,620
JAN 31, 1980	96,670	665,093	4,153	765,916
FEB 28, 1980	96,320	666,220	4,140	766,680
MAR 31, 1980	96,313	666,426	4,080	766,819

DEPARTMENT OF DEFENSE
WASHINGTON HEADQUARTERS SERVICES
DIRECTORATE FOR INFORMATION
OPERATIONS AND REPORTS

TABLE P23.5

DEPARTMENT OF DEFENSE
NAVY ACTIVE DUTY MILITARY PERSONNEL BY TYPE

DATE	OFFICERS	ENLISTED	MIDSHIPMEN		TOTAL
			U.S. NAVAL	ACADEMY	
OCT 31, 1978	62,331	462,151	4,387		528,869
NOV 30, 1978	62,069	461,514	4,375		527,958
DEC 31, 1978	62,375	462,431	4,372		529,178
JAN 31, 1979	61,584	461,315	4,335		527,234
FEB 28, 1979	61,548	460,179	4,323		526,050
MAR 31, 1979	61,405	459,237	4,280		524,922
APR 30, 1979	62,168	457,802	4,232		524,202
MAY 31, 1979	62,363	457,091	4,195		523,649
JUN 30, 1979	62,872	458,409	3,233		524,514
JUL 31, 1979	62,452	456,608	3,208		522,268
AUG 31, 1979	62,248	452,794	4,470		519,512
SEP 30, 1979	62,384	457,102	4,451		523,937
OCT 31, 1979	62,099	455,366	4,422		521,887
NOV 30, 1979	62,159	454,768	4,410		521,337
DEC 31, 1979	61,991	455,390	4,476		521,857
JAN 31, 1980	61,989	456,746	4,444		523,179
FEB 28, 1980	61,999	459,035	4,451		525,485
MAR 31, 1980	62,070	459,327	4,390		525,787

DEPARTMENT OF DEFENSE
WASHINGTON HEADQUARTERS SERVICES
DIRECTORATE FOR INFORMATION
OPERATIONS AND REPORTS

TABLE P23.6

DEPARTMENT OF DEFENSE
MARINE CORPS ACTIVE DUTY MILITARY PERSONNEL BY TYPE

DATE	OFFICERS	ENLISTED	TOTAL
OCT 31, 1978	18,411	172,213	190,624
NOV 30, 1978	18,404	170,697	189,101
DEC 31, 1978	18,307	169,621	187,928
JAN 31, 1979	18,426	169,462	187,888
FEB 28, 1979	18,423	168,246	186,669
MAR 31, 1979	18,315	167,203	185,518
APR 30, 1979	18,354	165,643	183,997
MAY 31, 1979	18,331	164,855	183,186
JUN 30, 1979	18,499	165,770	184,269
JUL 31, 1979	18,319	167,565	185,884
AUG 31, 1979	18,298	166,845	185,143
SEP 30, 1979	18,229	167,021	185,250
OCT 31, 1979	18,162	166,377	184,539
NOV 30, 1979	18,060	165,736	183,796
DEC 31, 1979	18,103	163,799	181,902
JAN 31, 1980	18,011	164,009	182,020
FEB 28, 1980	18,169	164,189	182,358
MAR 31, 1980	18,125	164,203	182,328

DEPARTMENT OF DEFENSE
WASHINGTON HEADQUARTERS SERVICES
DIRECTORATE FOR INFORMATION
OPERATIONS AND REPORTS

TABLE P23.7

DEPARTMENT OF DEFENSE
AIR FORCE ACTIVE DUTY MILITARY PERSONNEL BY TYPE

DATE	OFFICERS	ENLISTED	CADETS		TOTAL
			U.S.A.F.	ACADEMY	
OCT 31, 1978	95,445	469,972	4,368		569,785
NOV 30, 1978	95,269	469,375	4,355		568,999
DEC 31, 1978	95,038	467,681	4,284		567,003
JAN 31, 1979	94,984	467,665	4,182		566,831
FEB 26, 1979	94,730	466,888	4,149		565,767
MAR 31, 1979	94,651	465,832	4,128		564,611
APR 30, 1979	94,509	464,439	4,113		563,061
MAY 31, 1979	95,536	462,968	3,145		561,649
JUN 30, 1979	95,660	462,196	4,563		562,419
JUL 31, 1979	95,251	462,129	4,445		561,825
AUG 31, 1979	95,546	460,036	4,402		559,984
SEP 30, 1979	96,135	458,953	4,367		559,455
OCT 31, 1979	95,674	459,212	4,330		559,216
NOV 30, 1979	96,189	457,959	4,314		558,462
DEC 31, 1979	96,186	456,409	4,266		556,861
JAN 31, 1980	96,479	456,897	4,140		557,516
FEB 28, 1980	96,521	457,259	4,103		557,883
MAR 31, 1980	96,665	457,390	4,078		558,133

DEPARTMENT OF DEFENSE
WASHINGTON HEADQUARTERS SERVICES
DIRECTORATE FOR INFORMATION
OPERATIONS AND REPORTS

TABLE P23.41

DEPARTMENT OF DEFENSE
ARMY ACTIVE DUTY MILITARY PERSONNEL

REPORTED STRENGTH, AND ADJUSTMENTS TO REPORTED STRENGTH TO DERIVE "DIRECT PROGRAM STRENGTH" CHARGEABLE TO APPROPRIATION "MILITARY PERSONNEL, ARMY"

DATE	REPORTED STRENGTH	A/ (LESS) EXCLUDABLES	TOTAL	OFF	ENL	TOTAL PROGRAM STRENGTH	(LESS) REIMBURSABLES	OFF	ENL	TOTAL	OFFICER	ENLISTED	CADETS USMA
31 OCT 1978	768,695	487	768,206	645	352	767,209	96,145	666,801	4,263				
30 NOV 1978	764,299	494	763,803	626	340	762,837	95,668	662,959	4,210				
31 DEC 1978	756,645	496	756,147	620	356	755,171	95,345	655,621	4,205				
31 JAN 1979	757,822	498	757,322	603	311	756,408	95,385	656,830	4,193				
28 FEB 1979	755,497	499	754,996	583	292	754,121	95,302	654,630	4,189				
31 MAR 1979	751,294	497	750,794	527	226	750,041	95,065	650,861	4,115				
30 APR 1979	750,831	502	750,326	510	197	749,619	95,072	650,451	4,096				
31 MAY 1979	749,815	499	749,313	507	188	748,618	95,858	648,677	4,083				
30 JUN 1979	752,468	484	751,981	455	168	751,358	97,775	650,385	3,198				
31 JUL 1979	756,714	485	756,225	421	162	755,642	97,077	654,059	4,506				
31 AUG 1979	758,992	487	758,501	410	159	757,932	96,618	656,977	4,337				
30 SEP 1979	758,852	492	758,356	390	156	757,810	96,499	657,024	4,287				
31 OCT 1979	763,922	495	763,424	391	154	762,879	95,978	662,663	4,238				
30 NOV 1979	765,602	502	765,097	389	157	764,551	95,497	664,849	4,205				
31 DEC 1979	759,620	500	759,117	388	156	758,573	95,450	658,950	4,173				
31 JAN 1980	765,916	513	765,401	401	160	764,840	95,756	664,931	4,153				
28 FEB 1980	766,680	518	766,159	402	158	765,599	95,400	666,059	4,140				
31 MAR 1980	766,819	516	766,301	403	150	765,748	95,394	666,274	4,080				

A/ ACTIVE DUTY PERSONNEL PAID BY AN APPROPRIATION OTHER THAN MILITARY PERSONNEL, ARMY, AND EXCLUDED FROM THE END STRENGTH OF THE ARMY. COMPRISED OF CIVIL WORKS PERSONNEL, AND USAR AND ARNG PERSONNEL ON STATUTORY TOURS.

DEPARTMENT OF DEFENSE
WASHINGTON HEADQUARTERS SERVICES
DIRECTORATE FOR INFORMATION
OPERATIONS AND REPORTS

TABLE P23. 51

DEPARTMENT OF DEFENSE
NAVY ACTIVE DUTY MILITARY PERSONNEL

REPORTED STRENGTH, AND ADJUSTMENTS TO REPORTED STRENGTH TO DERIVE "DIRECT PROGRAM STRENGTH" CHARGEABLE TO APPROPRIATION "MILITARY PERSONNEL, NAVY"

DATE	REPORTED STRENGTH	(LESS) PAID FROM A/ RES PERS APPN	TOTAL PROGRAM STRENGTH	(LESS) REIMBURSABLES	OFFICER	ENLISTED	TOTAL	DIRECT PROGRAM STRENGTH CHARGEABLE TO APPROPRIATION "MILITARY PERSONNEL, NAVY"	OFFICER	ENLISTED	TOTAL	OFFICER CANDIDATES
31 OCT 1978	528,869	198	528,671	461	1,527	526,683	61,672	460,624	4,387	459,943	4,375	4,375
30 NOV 1978	527,958	201	527,757	467	1,571	525,719	61,401	459,943	4,372	459,943	4,372	4,372
31 DEC 1978	529,178	203	528,975	470	1,444	527,061	61,702	459,767	4,335	459,767	4,335	4,335
31 JAN 1979	527,234	203	527,031	459	1,548	525,024	60,922	458,592	4,280	458,592	4,280	4,280
28 FEB 1979	526,050	200	525,850	451	1,587	523,812	60,897	457,631	4,195	457,631	4,195	4,195
31 MAR 1979	524,922	198	524,724	441	1,606	522,677	60,766	456,195	4,232	456,195	4,232	4,232
30 APR 1979	524,202	203	523,999	442	1,607	521,950	61,523	455,495	4,233	455,495	4,233	4,233
31 MAY 1979	523,649	200	523,449	435	1,596	521,418	61,728	456,793	4,208	456,793	4,208	4,208
30 JUN 1979	524,514	202	524,312	424	1,616	522,272	62,246	455,031	4,470	455,031	4,470	4,470
31 JUL 1979	522,268	197	522,071	408	1,577	520,086	61,847	451,265	4,451	451,265	4,451	4,451
31 AUG 1979	519,512	194	519,318	434	1,529	517,355	61,620	455,622	4,422	455,622	4,422	4,422
30 SEP 1979	523,937	195	523,742	410	1,480	521,852	61,779	453,897	4,410	453,897	4,410	4,410
31 OCT 1979	521,887	194	521,693	394	1,469	519,830	61,511	453,284	4,476	453,284	4,476	4,476
30 NOV 1979	521,337	195	521,142	400	1,484	519,258	61,564	453,276	4,444	453,276	4,444	4,444
31 DEC 1979	521,857	194	521,663	412	1,469	521,099	61,379	457,572	4,390	457,572	4,390	4,390
31 JAN 1980	523,179	194	522,985	416	1,470	523,406	61,383	457,866		457,866		
28 FEB 1980	525,485	196	525,289	420	1,463	523,731	61,455					
31 MAR 1980	525,787	195	525,592	420	1,441							

A/ NAVAL RESERVE PERSONNEL ON ACTIVE DUTY UNDER PROVISIONS OF SEC. 265, TITLE 10, U. S. CODE PAID FROM THE NAVAL RESERVE PERSONNEL APPROPRIATION.

DEPARTMENT OF DEFENSE
WASHINGTON HEADQUARTERS SERVICES
DIRECTORATE FOR INFORMATION OPERATIONS AND REPORTS

TABLE P23.61

DEPARTMENT OF DEFENSE
MARINE CORPS ACTIVE DUTY MILITARY PERSONNEL

REPORTED STRENGTH, AND ADJUSTMENTS TO REPORTED STRENGTH TO DERIVE "DIRECT PROGRAM STRENGTH" CHARGEABLE TO APPROPRIATION "MILITARY PERSONNEL, MARINE CORPS"

DATE	REPORTED STRENGTH	(LESS) PAID FROM A/ RES PERS APPN	TOTAL PROGRAM STRENGTH	(LESS) REIMBURSABLES	OFFICER	ENLISTED	TOTAL	OFFICER	ENLISTED	TOTAL	OFFICER	ENLISTED	OFFICER CANDIDATES
31 OCT 1978	190,624	62	190,562	20	1	1	190,541	18,329	172,212	18,329	172,212	-	-
30 NOV 1978	189,101	65	189,036	20	1	1	189,015	18,319	170,696	18,319	170,696	-	-
31 DEC 1978	187,928	65	187,863	21	1	1	187,841	18,221	169,620	18,221	169,620	-	-
31 JAN 1979	187,888	66	187,822	21	1	1	187,800	18,339	169,461	18,339	169,461	-	-
28 FEB 1979	186,669	66	186,603	20	1	1	186,582	18,337	168,245	18,337	168,245	-	-
31 MAR 1979	185,518	64	185,454	20	1	1	185,433	18,231	167,202	18,231	167,202	-	-
30 APR 1979	183,997	65	183,932	20	1	1	183,911	18,269	165,642	18,269	165,642	-	-
31 MAY 1979	183,186	65	183,121	20	1	1	183,100	18,246	164,854	18,246	164,854	-	-
30 JUN 1979	184,269	64	184,205	20	1	1	184,184	18,415	165,769	18,415	165,769	-	-
31 JUL 1979	185,884	63	185,821	21	1	1	185,799	18,235	167,564	18,235	167,564	-	-
31 AUG 1979	185,143	61	185,082	21	1	1	185,060	18,216	166,844	18,216	166,844	-	-
30 SEP 1979	185,250	63	185,187	21	1	1	185,165	18,145	167,020	18,145	167,020	-	-
31 OCT 1979	184,539	64	184,475	21	1	1	184,453	18,077	166,376	18,077	166,376	-	-
30 NOV 1979	183,796	65	183,731	21	1	1	183,709	17,974	165,735	17,974	165,735	-	-
31 DEC 1979	181,902	64	181,838	21	1	1	181,816	18,018	163,798	18,018	163,798	-	-
31 JAN 1980	182,020	64	181,956	21	1	1	181,934	17,926	164,008	17,926	164,008	-	-
28 FEB 1980	182,358	65	182,293	21	1	1	182,271	18,083	164,188	18,083	164,188	-	-
31 MAR 1980	182,328	67	182,261	21	1	1	182,239	18,037	164,202	18,037	164,202	-	-

A/ MARINE CORPS RESERVE PERSONNEL ON ACTIVE DUTY UNDER PROVISIONS OF SEC. 285, TITLE 10, U.S. CODE PAID FROM THE MARINE CORPS RESERVE PERSONNEL APPROPRIATION.

DEPARTMENT OF DEFENSE
WASHINGTON HEADQUARTERS SERVICES
DIRECTORATE FOR INFORMATION OPERATIONS AND REPORTS

TABLE P23.71

DEPARTMENT OF DEFENSE
AIR FORCE ACTIVE DUTY MILITARY PERSONNEL

REPORTED STRENGTH, AND ADJUSTMENTS TO REPORTED STRENGTH TO DERIVE "DIRECT PROGRAM STRENGTH" CHARGEABLE TO APPROPRIATION "MILITARY PERSONNEL, AIR FORCE"

DATE	REPORTED STRENGTH	(LESS) ANG/AFR	TOTAL PROGRAM STRENGTH	(LESS) REIMBURSABLES	TOTAL	OFFICERS	ENLISTED	OFFICER	ENLISTED	TOTAL	USAF & AVCADS
31 OCT 1976	569,765		569,561		569,561	224					
30 NOV 1976	568,999	225	568,774		568,774	225					
31 DEC 1976	567,003	221	566,782		566,782	221					
31 JAN 1979	566,831	224	566,607		566,607	224					
28 FEB 1979	565,767	226	565,541		565,541	226					
31 MAR 1979	564,611	230	564,381		564,381	230					
30 APR 1979	563,061	230	562,831		562,831	230					
31 MAY 1979	561,649	231	561,418		561,418	231					
30 JUN 1979	562,419	230	562,189		562,189	230					
31 JUL 1979	561,625	228	561,597		561,597	228					
31 AUG 1979	559,984	222	559,762		559,762	222					
30 SEP 1979	559,455	235	559,220		559,220	235					
31 OCT 1979	559,216	233	558,983		558,983	233					
30 NOV 1979	558,462	236	558,226		558,226	236					
31 DEC 1979	556,861	234	556,627		556,627	234					
31 JAN 1980	557,516	243	557,273		557,273	243					
28 FEB 1980	557,883	236	557,647		557,647	236					
31 MAR 1980	558,133	237	557,896		557,896	237					

DEPARTMENT OF DEFENSE
WASHINGTON HEADQUARTERS SERVICES
DIRECTORATE FOR INFORMATION
OPERATIONS AND REPORTS

TABLE P25.6

DEPARTMENT OF DEFENSE
WOMEN MILITARY PERSONNEL ON ACTIVE DUTY, OFFICERS, AND ENLISTED BY SERVICE

DATE	TOTAL DOD			ARMY			NAVY			MARINE CORPS			AIR FORCE		
	TOTAL	OFF	ENL AND OFF CAND	TOTAL	OFF	ENL	TOTAL	OFF	ENL AND OFF CAND	TOTAL	OFF	ENL	TOTAL	OFF	ENL
31 OCT 78	135,444	16,877	118,567	57,090	6,348	50,742	25,673	4,032	21,641	5,143	429	4,714	47,538	6,068	41,470
30 NOV 78	136,417	16,931	119,486	57,035	6,323	50,712	25,897	4,036	21,861	5,156	443	4,713	48,329	6,129	42,200
31 DEC 78	136,702	16,965	119,737	56,358	6,299	50,059	26,351	4,092	22,259	5,138	443	4,695	48,855	6,131	42,724
31 JAN 79	137,987	17,079	120,908	56,857	6,340	50,517	26,545	4,050	22,495	5,306	447	4,859	49,279	6,242	43,037
28 FEB 79	138,834	17,257	121,577	57,094	6,419	50,675	26,334	4,071	22,263	5,369	440	4,929	50,037	6,327	43,710
31 MAR 79	140,255	17,345	122,910	56,969	6,437	50,532	26,843	4,077	22,766	5,413	436	4,977	51,030	6,395	44,635
30 APR 79	141,621	17,442	124,179	57,289	6,462	50,827	27,463	4,100	23,363	5,466	455	5,011	51,403	6,425	44,978
31 MAY 79	143,156	17,794	125,362	57,673	6,645	51,028	27,873	4,116	23,757	5,474	456	5,018	52,136	6,577	45,559
30 JUN 79	145,341	18,023	127,318	58,675	6,737	51,938	28,191	4,135	24,056	5,518	453	5,065	52,957	6,698	46,259
31 JUL 79	146,816	18,272	128,544	59,595	6,775	52,820	28,571	4,203	24,368	5,721	447	5,274	52,929	6,847	46,082
31 AUG 79	148,707	18,465	130,242	61,248	6,788	54,460	28,705	4,206	24,499	5,710	443	5,267	53,044	7,028	46,016
30 SEP 79	151,082	18,959	132,123	62,017	6,866	55,151	29,402	4,358	25,044	5,960	459	5,501	53,703	7,276	46,427
31 OCT 79	153,265	19,050	134,215	63,806	6,961	56,845	29,855	4,378	25,477	5,922	456	5,466	53,682	7,255	46,427
30 NOV 79	155,902	19,209	136,693	64,668	6,873	57,795	30,366	4,432	25,934	6,026	456	5,570	54,842	7,448	47,394
31 DEC 79	156,851	19,241	137,610	64,425	6,882	57,543	31,077	4,410	26,667	6,057	464	5,593	55,292	7,485	47,807
31 JAN 80	159,231	19,470	139,761	65,503	6,907	58,596	31,610	4,488	27,122	6,143	482	5,661	55,975	7,593	48,382
28 FEB 80	161,163	19,588	141,575	65,721	6,894	58,827	32,368	4,529	27,839	6,198	481	5,717	56,876	7,684	49,192
31 MAR 80	162,201	19,806	142,395	65,501	6,982	58,519	32,801	4,562	28,239	6,248	475	5,773	57,651	7,787	49,864

DEPARTMENT OF DEFENSE
WASHINGTON HEADQUARTERS SERVICES
DIRECTORATE FOR INFORMATION
OPERATIONS AND REPORTS

TABLE P26.0

DEPARTMENT OF DEFENSE
MILITARY PERSONNEL ON ACTIVE DUTY BY GRADE IN WHICH SERVING A/
MARCH 31, 1960

RANK/GRADE	ARMY	NAVY	MARINE CORPS	AIR FORCE
GENERAL OF ARMY - FLEET ADMIRAL	1	-	-	-
GENERAL - ADMIRAL	10	8	2	12
LT GENERAL - VICE ADMIRAL	33	32	8	39
MAJ GENERAL - REAR ADMIRAL (U)	167	88	23	128
BRIG GENERAL - REAR ADMIRAL (L)	212	129	34	180
COLONEL - CAPTAIN	4,600	3,583	553	5,309
LIEUTENANT COL - COMMANDER	11,038	7,609	1,461	12,984
MAJOR - LT COMMANDER	16,344	12,003	2,980	18,586
CAPTAIN - LIEUTENANT	26,643	16,006	4,809	35,502
1ST LIEUTENANT - LIEUTENANT (JG)	11,617	10,611	4,087	9,506
2ND LIEUTENANT - ENSIGN	12,452	9,159	2,839	14,418
CHIEF WARRANT OFFICER W-4	1,389	572	203	1
CHIEF WARRANT OFFICER W-3	3,882	435	66	-
CHIEF WARRANT OFFICER W-2	5,194	1,830	667	-
WARRANT OFFICER W-1	2,731	5	393	-
TOTAL OFFICERS	96,313	62,070	18,125	96,665
E-9	3,753	3,390	1,238	4,453
E-8	12,892	8,604	3,106	6,789
E-7	45,414	30,839	8,375	32,777
E-6	75,754	65,905	12,723	51,921
E-5	116,931	80,365	22,553	98,392
E-4	168,970	98,829	27,721	105,890
E-3	94,005	74,635	41,864	97,021
E-2	70,156	47,221	27,401	31,016
E-1	78,551	49,539	19,222	27,131
TOTAL ENLISTED	666,426	459,327	164,203	457,390
CADETS & MIDSHIPMEN	4,080	4,390	-	4,078
GRAND TOTAL	766,819	525,787	162,328	556,133

A/ INCLUDES REIMBURSABLE ACTIVE DUTY
MILITARY PAY STRENGTHS AND ACTIVE
DUTY MILITARY PERSONNEL PAID FROM
CIVIL FUNCTIONS, RESERVE, AND
NATIONAL GUARD APPROPRIATIONS.

DEPARTMENT OF DEFENSE
WASHINGTON HEADQUARTERS SERVICES
DIRECTORATE FOR INFORMATION
OPERATIONS AND REPORTS

TABLE P26 02

FEMALE MILITARY PERSONNEL ON ACTIVE DUTY BY GRADE IN WHICH SERVING A/
DEPARTMENT OF DEFENSE

MARCH 31, 1980

RANK/GRADE	ARMY	NAVY	MARINE CORPS	AIR FORCE	TOTAL DOD
GENERAL OF ARMY - FLEET ADMIRAL	-	-	-	-	-
GENERAL - ADMIRAL	-	-	-	-	-
LT GENERAL - VICE ADMIRAL	-	-	-	-	-
MAJ GENERAL - REAR ADMIRAL (U)	1	-	-	1	2
BRIG GENERAL - REAR ADMIRAL (L)	1	2	1	1	5
COLONEL - CAPTAIN	99	72	4	60	235
LIEUTENANT COL - COMMANDER	251	234	19	328	832
MAJOR - LT COMMANDER	641	537	46	713	1,937
CAPTAIN - LIEUTENANT	2,814	1,546	130	2,759	7,249
1ST LIEUTENANT - LIEUTENANT (JG)	1,444	1,206	134	1,590	4,374
2ND LIEUTENANT - ENSIGN	1,628	950	113	2,335	5,026
CHIEF WARRANT OFFICER W-4	2	1	3	-	6
CHIEF WARRANT OFFICER W-3	5	4	3	-	12
CHIEF WARRANT OFFICER W-2	34	10	14	-	58
WARRANT OFFICER W-1	62	-	8	-	70
TOTAL OFFICERS	6,982	4,562	475	7,787	19,806
E-9	21	3	6	9	39
E-8	78	29	25	27	159
E-7	512	130	61	101	824
E-6	1,979	1,072	193	378	3,622
E-5	10,686	4,405	859	6,131	22,081
E-4	16,676	6,867	1,085	14,687	39,315
E-3	10,918	5,956	1,566	16,627	35,067
E-2	8,006	4,273	1,271	5,343	18,893
E-1	9,327	5,237	687	6,122	21,373
TOTAL ENLISTED	58,203	27,972	5,773	49,425	141,373
CADETS & MIDSHIPMEN	316	267	-	439	1,022
GRAND TOTAL	65,501	32,801	6,248	57,651	162,201

A/ INCLUDES REIMBURSABLE ACTIVE DUTY MILITARY PAY STRENGTHS AND ACTIVE DUTY MILITARY PERSONNEL PAID FROM CIVIL FUNCTIONS, RESERVE, AND NATIONAL GUARD APPROPRIATIONS.

DEPARTMENT OF DEFENSE
WASHINGTON HEADQUARTERS SERVICES
DIRECTORATE FOR INFORMATION OPERATIONS AND REPORTS

TABLE P26.04
 DEPARTMENT OF DEFENSE
 MILITARY PERSONNEL ON ACTIVE DUTY BY GRADE IN WHICH SERVING

REGULAR A/

MARCH 31, 1980

RANK/GRADE	TOTAL DOD	ARMY	NAVY	MARINE CORPS	AIR FORCE
GENERAL OF ARMY - FLEET ADMIRAL	1	1	-	-	-
GENERAL - ADMIRAL	32	10	8	2	12
LT GENERAL - VICE ADMIRAL	111	32	32	8	39
MAJ GENERAL - REAR ADMIRAL (U)	398	165	87	23	123
BRIG GENERAL - REAR ADMIRAL (L)	549	210	128	33	178
COLONEL - CAPTAIN	13,330	4,335	3,438	527	5,030
LIEUTENANT COL - COMMANDER	29,629	9,182	7,146	1,442	11,859
MAJOR - LT COMMANDER	37,035	9,629	10,464	2,881	14,061
CAPTAIN - LIEUTENANT	47,843	11,200	11,678	4,234	20,731
1ST LIEUTENANT - LIEUTENANT (JG)	14,445	4,078	6,263	2,214	1,890
2ND LIEUTENANT - ENSIGN	11,772	4,477	4,582	868	1,845
CHIEF WARRANT OFFICER W-4	1,684	924	563	196	1
CHIEF WARRANT OFFICER W-3	2,329	1,833	432	64	-
CHIEF WARRANT OFFICER W-2	3,581	1,105	1,815	661	-
WARRANT OFFICER W-1	407	10	4	393	-
TOTAL OFFICERS	163,146	47,191	46,640	13,546	55,769
E-9	12,695	3,752	3,262	1,234	4,447
E-8	33,028	12,890	8,257	3,096	8,785
E-7	116,088	45,401	29,588	8,339	32,760
E-6	203,080	75,730	62,739	12,696	51,915
E-5	313,826	116,905	76,143	22,395	98,383
E-4	393,646	168,619	91,460	27,713	105,854
E-3	295,118	92,114	64,379	41,845	96,780
E-2	161,634	67,592	35,818	27,350	30,874
E-1	161,228	77,884	37,072	19,157	27,115
TOTAL ENLISTED	1,690,343	660,887	408,718	163,825	456,913
REGULAR TOTAL	1,853,489	708,078	455,358	177,371	512,682

A/ REGULAR PLUS RETIRED REGULAR OFFICERS ON ACTIVE DUTY.

DEPARTMENT OF DEFENSE
 WASHINGTON HEADQUARTERS SERVICES
 DIRECTORATE FOR INFORMATION OPERATIONS AND REPORTS

TABLE P26.05

DEPARTMENT OF DEFENSE
MILITARY PERSONNEL ON ACTIVE DUTY BY GRADE IN WHICH SERVING

RESERVE A/

MARCH 31, 1980

RANK/GRADE	ARMY	NAVY	MARINE CORPS	AIR FORCE
GENERAL OF ARMY - FLEET ADMIRAL	-	-	-	-
GENERAL - ADMIRAL	-	-	-	-
LT GENERAL - VICE ADMIRAL	1	-	-	-
MAJ GENERAL - REAR ADMIRAL (U)	8	1	-	5
BRIG GENERAL - REAR ADMIRAL (L)	6	1	1	2
COLONEL - CAPTAIN	715	145	26	279
LIEUTENANT COL - COMMANDER	3,463	463	19	1,125
MAJOR - LT COMMANDER	12,878	1,539	99	4,525
CAPTAIN - LIEUTENANT	35,117	4,328	575	14,771
1ST LIEUTENANT - LIEUTENANT (JG)	21,376	4,348	1,873	7,616
2ND LIEUTENANT - ENSIGN	27,096	4,577	1,971	12,573
CHIEF WARRANT OFFICER W-4	481	9	7	-
CHIEF WARRANT OFFICER W-3	2,054	3	2	-
CHIEF WARRANT OFFICER W-2	4,110	15	6	-
WARRANT OFFICER W-1	2,722	1	-	-
TOTAL OFFICERS	110,027	15,430	4,579	40,896
E-9	139	128	4	6
E-8	363	347	10	4
E-7	1,317	1,251	36	17
E-6	3,223	3,166	27	6
E-5	4,415	4,222	158	9
E-4	7,764	7,369	8	36
E-3	12,407	10,256	19	241
E-2	14,160	11,403	51	142
E-1	13,215	12,467	65	16
TOTAL ENLISTED	57,003	50,609	378	477
RESERVE TOTAL	167,030	66,039	4,957	41,373

A/ INCLUDES RESERVE, NATIONAL GUARD, AUS, AND AFUS OFFICERS ON ACTIVE DUTY.

DEPARTMENT OF DEFENSE
WASHINGTON HEADQUARTERS SERVICES
DIRECTORATE FOR INFORMATION OPERATIONS AND REPORTS

TABLE P27.1

DEPARTMENT OF DEFENSE
SUMMARY OF ENLISTED PERSONNEL PROCUREMENT
FISCAL YEAR 1980

	OCT 1979	NOV	DEC 1979	JAN 1980	FEB 1980	MAR 1980
TOTAL DEPARTMENT OF DEFENSE	52,500	46,109	33,431	53,224	48,466	45,694
INDUCTIONS	-	-	-	-	-	-
FIRST ENLISTMENTS	31,154	26,620	17,681	32,445	28,649	25,512
IMMEDIATE REENLISTMENTS	16,587	15,356	13,635	15,393	15,072	15,267
OTHER REENLISTMENTS	2,140	1,899	1,507	2,500	2,238	2,122
RESERVES TO ACTIVE DUTY A/	2,619	2,234	608	2,886	2,507	2,793
ARMY	26,059	22,055	13,723	26,015	21,669	21,839
INDUCTIONS	-	-	-	-	-	-
FIRST ENLISTMENTS	16,528	13,447	6,260	15,852	13,055	11,265
IMMEDIATE REENLISTMENTS	7,220	6,963	6,483	7,786	7,017	6,545
OTHER REENLISTMENTS	1,496	1,115	675	1,459	1,145	1,070
RESERVES TO ACTIVE DUTY	815	530	305	918	452	959
NAVY	9,997	9,525	6,743	11,630	11,719	10,563
INDUCTIONS	-	-	-	-	-	-
FIRST ENLISTMENTS	5,448	4,912	4,420	6,691	6,209	5,664
IMMEDIATE REENLISTMENTS	2,468	2,491	1,712	2,504	3,011	2,639
OTHER REENLISTMENTS	329	462	394	549	522	517
RESERVES TO ACTIVE DUTY	1,752	1,660	217	1,886	1,977	1,743
MARINE CORPS	4,596	3,897	3,252	4,340	4,340	3,899
INDUCTIONS	-	-	-	-	-	-
FIRST ENLISTMENTS	2,796	2,730	1,869	3,151	3,151	2,624
IMMEDIATE REENLISTMENTS	1,652	995	1,013	878	878	1,003
OTHER REENLISTMENTS	102	132	288	239	239	187
RESERVES TO ACTIVE DUTY	46	40	82	72	72	85
AIR FORCE	11,848	10,632	9,713	11,239	10,738	9,393
INDUCTIONS	-	-	-	-	-	-
FIRST ENLISTMENTS	6,382	5,531	5,132	6,751	6,234	5,959
IMMEDIATE REENLISTMENTS	5,247	4,907	4,427	4,225	4,166	3,080
OTHER REENLISTMENTS	213	190	150	253	332	348
RESERVES TO ACTIVE DUTY	6	4	4	10	6	6

A/ INCLUDES NATIONAL GUARD.

DEPARTMENT OF DEFENSE
WASHINGTON HEADQUARTERS SERVICES
DIRECTORATE FOR INFORMATION
OPERATIONS AND REPORTS

TABLE P27 21

DEPARTMENT OF DEFENSE
ARMY ENLISTED PERSONNEL PROCUREMENT
FISCAL YEAR 1980

	OCT 1979	NOV 1979	DEC 1979	JAN 1980	FEB 1980	MAR 1980
TOTAL	26,059	22,055	13,723	26,015	21,669	21,839
REGULAR ENL. AND REENL. - TOTAL	25,244	21,525	13,418	25,097	21,217	20,880
FIRST ENLISTMENTS	16,528	13,447	6,260	15,852	13,055	11,265
REENLISTMENTS - TOTAL	8,716	8,078	7,158	9,245	8,162	9,615
IMMEDIATE REENLISTMENTS	7,220	6,963	6,483	7,786	7,017	8,545
FORMER REGULAR	7,170	6,895	6,445	7,731	6,971	8,484
FORMER RESERVE & N.G.	50	68	38	55	46	61
FORMER INDUCTEE	-	-	-	-	-	-
REENL. OTHER THAN IMMEDIATE	1,496	1,115	675	1,459	1,145	1,070
WITHIN 2-90 DAYS AFTER SEPARATION	252	169	118	186	130	108
FORMER REGULAR	85	47	28	48	35	30
FORMER RESERVE & N.G.	139	102	83	126	73	60
FORMER INDUCTEE	10	10	4	12	13	16
FORMER OFFICER	18	10	3	-	9	2
OVER 90 DAYS AFTER SEPARATION	1,244	946	557	1,273	1,015	962
INDUCTIONS	-	-	-	-	-	-
RESERVES AND N.G. CALLS	815	530	305	918	452	959

DEPARTMENT OF DEFENSE
WASHINGTON HEADQUARTERS SERVICES
DIRECTORATE FOR INFORMATION
OPERATIONS AND REPORTS

TABLE P27.22
 DEPARTMENT OF DEFENSE
 NAVY ENLISTED PERSONNEL PROCUREMENT
 FISCAL YEAR 1980

	OCT 1979	NOV 1979	DEC 1979	JAN 1980	FEB 1980	MAR 1980
TOTAL	9,997	9,525	6,743	11,630	11,719	10,563
REGULAR ENL. AND REENL. - TOTAL	8,245	7,865	6,526	9,744	9,742	8,820
FIRST ENLISTMENTS	5,448	4,912	4,420	6,691	6,209	5,664
REENLISTMENTS - TOTAL	2,797	2,953	2,106	3,053	3,533	3,156
IMMEDIATE REENLISTMENTS	2,468	2,491	1,712	2,504	3,011	2,639
FORMER REGULAR FORMER RESERVE	2,380 88	2,406 85	1,679 33	2,372 132	2,932 79	2,470 169
REENL. OTHER THAN IMMEDIATE	329	462	394	549	522	517
WITHIN 2-90 DAYS AFTER SEPARATION	71	94	63	100	86	90
FORMER REGULAR FORMER RESERVE	71 -	94 -	63 -	100 -	86 -	90 -
OVER 90 DAYS AFTER SEPARATION	258	368	331	449	436	427
INDUCTIONS	-	-	-	-	-	-
RESERVES TO ACTIVE DUTY	1,752	1,660	217	1,886	1,977	1,743
FIRST ENLISTMENTS REENLISTMENTS REPORTED TO ACTIVE DUTY	252 83 1,417	286 82 1,292	155 49 13	272 82 1,532	278 89 1,610	203 80 1,460

DEPARTMENT OF DEFENSE
 WASHINGTON HEADQUARTERS SERVICES
 DIRECTORATE FOR INFORMATION
 OPERATIONS AND REPORTS

TABLE P27.23

DEPARTMENT OF DEFENSE
MARINE CORPS ENLISTED PERSONNEL PROCUREMENT
FISCAL YEAR 1980

	OCT 1979	NOV 1979	DEC 1979	JAN 1980	FEB 1980	MAR 1980
TOTAL	4,596	3,897	3,252	4,340	4,340	3,899
REGULAR ENL. AND REENL. - TOTAL	4,550	3,857	3,170	4,268	4,268	3,814
FIRST ENLISTMENTS	2,796	2,730	1,869	3,151	3,151	2,624
REENLISTMENTS - TOTAL	1,754	1,127	1,301	1,117	1,117	1,190
IMMEDIATE REENLISTMENTS	1,652	995	1,013	878	878	1,003
FORMER REGULAR A/ FORMER RESERVE FORMER INDUCTEE	1,606 46 -	966 29 -	968 45 -	834 44 -	834 44 -	971 32 -
REENL. OTHER THAN IMMEDIATE	102	132	288	239	239	187
WITHIN 2-90 DAYS AFTER SEPARATION	1	1	13	3	3	-
FORMER REGULAR FORMER RESERVE FORMER INDUCTEE	1 - -	1 - -	5 8 -	3 - -	3 - -	- - -
OVER 90 DAYS AFTER SEPARATION B/	101	131	275	236	236	187
INDUCTIONS	-	-	-	-	-	-
RESERVES TO ACTIVE DUTY	46	40	82	72	72	85
FIRST ENLISTMENTS REENLISTMENTS REPORTED TO ACTIVE DUTY	- - 46	- - 40	- - 82	- - 72	- - 72	- - 85

A/ INCLUDES EXTENSIONS FOR WHICH REENLISTMENT BONUS IS PAID.
B/ INCLUDES ENLISTMENTS OF FORMER OFFICERS.

DEPARTMENT OF DEFENSE
WASHINGTON HEADQUARTERS SERVICES
DIRECTORATE FOR INFORMATION
OPERATIONS AND REPORTS

TABLE P27 24

DEPARTMENT OF DEFENSE
AIR FORCE ENLISTED PERSONNEL PROCUREMENT
FISCAL YEAR 1980

	OCT 1979	NOV 1979	DEC 1979	JAN 1980	FEB 1980	MAR 1980
TOTAL	11,848	10,632	9,713	11,239	10,738	9,393
REGULAR ENL. AND REENL. - TOTAL	11,842	10,628	9,709	11,229	10,732	9,387
FIRST ENLISTMENTS	6,382	5,531	5,132	6,751	6,234	5,959
REENLISTMENTS - TOTAL	5,460	5,097	4,577	4,478	4,498	3,428
IMMEDIATE REENLISTMENTS	5,247	4,907	4,427	4,225	4,166	3,080
FORMER REGULAR FORMER RESERVE & N.G.	5,247	4,907	4,426	4,225	4,165	3,079
REENL. OTHER THAN IMMEDIATE	213	190	150	253	332	348
WITHIN 2-90 DAYS AFTER SEPARATION	-	-	-	-	-	-
FORMER REGULAR FORMER RESERVE & N.G.	-	-	-	-	-	-
OVER 90 DAYS AFTER SEPARATION A/	213	190	150	253	332	348
INDUCTIONS	-	-	-	-	-	-
RESERVES & N.G. TO ACTIVE DUTY	6	4	4	10	6	6

A/ INCLUDES ENLISTMENTS OF FORMER COMMISSIONED AND WARRANT OFFICERS.

TABLE P29. 20-29. 34

DEPARTMENT OF DEFENSE
REENLISTMENT RATES BY SERVICE

	A/ "UNADJUSTED" REENLISTMENT RATES FOR TOTAL REGULARS				B/ "ADJUSTED" REENLISTMENT RATES FOR TOTAL REGULARS				REENLISTMENT RATES FOR ARMY INDUCTEES			
	TOTAL DOD	ARMY	NAVY	MARINE CORPS	AIR FORCE	TOTAL DOD	ARMY	NAVY	MARINE CORPS	AIR FORCE	UN- ADJUSTED	AD- JUSTED
FY 1980 (6 MOS)												
ELIGIBLES	167,975	67,380	40,651	17,235	42,709	154,293	62,581	38,392	16,426	36,894	-	-
REENLISTMENTS	96,457	44,049	20,237	6,410	25,761	83,624	39,246	18,762	5,542	20,074	-	-
REENLISTMENT RATE	57.4%	65.4%	49.8%	37.2%	60.3%	54.2%	62.7%	48.9%	33.7%	54.4%	-	-

TABLE P29. 20-29. 34

DEPARTMENT OF DEFENSE
REENLISTMENT RATES BY SERVICE

	A/ "UNADJUSTED" REENLISTMENT RATES FOR FIRST-TERM REGULARS				B/ "ADJUSTED" REENLISTMENT RATES FOR FIRST-TERM REGULARS					
	TOTAL DOD	ARMY	NAVY	MARINE CORPS	AIR FORCE	TOTAL DOD	ARMY	NAVY	MARINE CORPS	AIR FORCE
FY 1980 (6 MOS)										
ELIGIBLES	80,149	25,184	25,066	9,424	20,475	72,756	23,512	23,606	9,007	16,631
REENLISTMENTS	33,353	13,784	9,543	2,300	7,726	26,515	12,109	8,606	1,844	3,956
REENLISTMENT RATE	41.6%	54.7%	38.1%	24.4%	37.7%	36.4%	51.5%	36.5%	20.5%	23.8%

TABLE P29 20-29 34

DEPARTMENT OF DEFENSE
REENLISTMENT RATES BY SERVICE

	A/ "UNADJUSTED" REENLISTMENT RATES FOR CAREER REGULARS				B/ "ADJUSTED" REENLISTMENT RATES FOR CAREER REGULARS					
	TOTAL DOD	ARMY	NAVY	MARINE CORPS	AIR FORCE	TOTAL DOD	ARMY	NAVY	MARINE CORPS	AIR FORCE
FY 1980 (6 MOS)										
ELIGIBLES	87,826	42,196	15,585	7,811	22,234	81,537	39,069	14,786	7,419	20,263
REENLISTMENTS	63,104	30,265	10,694	4,110	18,035	57,109	27,137	10,156	3,698	16,118
REENLISTMENT RATE	71.9%	71.7%	68.6%	52.6%	81.1%	70.0%	69.5%	68.7%	49.8%	79.5%

DEFINITIONS:

- A/ "UNADJUSTED REENLISTMENT RATE" - THE RATIO OF TOTAL REENLISTMENTS OCCURRING IN A GIVEN PERIOD TO TOTAL SEPARATIONS ELIGIBLE TO REENLIST IN THE SAME PERIOD, EXPRESSED AS A PERCENTAGE
- B/ "ADJUSTED REENLISTMENT RATE" - THE "UNADJUSTED" RATE ADJUSTED TO EXCLUDE THE EFFECTS OF: (1) EARLY SEPARATIONS FOR IMMEDIATE REENLISTMENTS AND (2) OTHER EARLY DISCHARGES OF ELIGIBLES UNDER EARLY RELEASE PROGRAMS.

TABLE R11.0

DEPARTMENT OF DEFENSE
RESERVE COMPONENT STRENGTH SUMMARY

MARCH 31, 1980

RESERVES BY RESERVE CATEGORY		
TYPE OF DUTY	TOTAL	OFFICER
TOTAL	2,132,165	664,441
READY RESERVE		
NOT ON ACTIVE DUTY	1,226,255	184,584
ACTIVE STATUS	1,223,076	183,940
INACTIVE STATUS B/	3,179	644
STANDBY RESERVE	96,006	81,008
ON ACTIVE STATUS	29,470	16,815
INACTIVE STATUS	66,536	64,193
RETIRED - RETIRED STATUS	809,904	398,849

A/ INCLUDES OFFICER CANDIDATES.

B/ INACTIVE NATIONAL GUARD AND PEP'S IN NON-PAY STATUS.

RESERVES IN "PAID STATUS"		
PAY GROUP	TOTAL	OFFICER
SELECTED RESERVE	818,348	114,977
DRILL PAY STATUS	A, B, C, M, P, T, O	793,245
INITIAL ACTIVE DUTY TRAINING	F, U	25,103
		-
		703,371
		678,268
		25,103

DEPARTMENT OF DEFENSE
WASHINGTON HEADQUARTERS SERVICES
DIRECTORATE FOR INFORMATION
OPERATIONS AND REPORTS

TABLE R12 0

DEPARTMENT OF DEFENSE
RESERVE STRENGTH - OFFICER AND ENLISTED
NOT ON ACTIVE DUTY

DATE	TOTAL	OFFICERS	ENLISTED A/
31 OCT 1978	2,105,643	680,208	1,425,435
30 NOV 1978	2,099,265	680,125	1,419,140
31 DEC 1978	2,097,411	679,224	1,418,187
31 JAN 1979	2,091,285	681,729	1,409,556
28 FEB 1979	2,092,893	682,257	1,410,636
31 MAR 1979	2,092,419	679,842	1,412,577
30 APR 1979	2,096,931	680,370	1,416,561
31 MAY 1979	2,092,121	673,812	1,418,309
30 JUN 1979	2,093,845	670,942	1,422,903
31 JUL 1979	2,088,691	665,786	1,422,905
31 AUG 1979	2,175,892	649,548	1,526,344
30 SEP 1979	2,108,840	663,727	1,445,113
31 OCT 1979	2,119,750	663,212	1,456,538
30 NOV 1979	2,126,363	664,288	1,462,075
31 DEC 1979	2,130,130	663,133	1,466,997
31 JAN 1980	2,129,646	662,563	1,467,083
28 FEB 1980	2,133,456	663,894	1,469,562
31 MAR 1980	2,132,165	664,441	1,467,724

A/ INCLUDES OFFICER CANDIDATES.

DEPARTMENT OF DEFENSE
WASHINGTON HEADQUARTERS SERVICES
DIRECTORATE FOR INFORMATION
OPERATIONS AND REPORTS

TABLE R13.0

DEPARTMENT OF DEFENSE
READY RESERVE AND ACTIVE DUTY STRENGTH COMPARED TO STATUTORY LIMITATION

MARCH 31, 1980

	TOTAL	ON ACTIVE DUTY	NOT ON ACTIVE DUTY
STATUTORY READY RESERVE LIMITATION A/	2,900,000		
READY RESERVE AND ACTIVE DUTY STRENGTH	1,414,756	168,012	1,246,744
COAST GUARD RESERVE	21,471	982	20,489
DOD RESERVE	1,393,285	167,030	1,226,255
ARMY			
NATIONAL GUARD B/	811,995	54,661	757,334
ARMY RESERVE	359,902	1,846	358,056
	452,093	52,815	399,278
NAVAL RESERVE	246,134	66,039	180,095
MARINE CORPS RESERVE	95,719	4,957	90,762
AIR FORCE			
AIR NATIONAL GUARD C/	239,437	41,373	198,064
AIR FORCE RESERVE	94,603	299	94,304
	144,834	41,074	103,760

A/ SECTION 205(B), ARMED FORCES RESERVE ACT OF 1952, AS AMENDED.

B/ INCLUDES "INACTIVE NATIONAL GUARD" NUMBERING 3,179 AND REP'S NUMBERING 1,800.

C/ INCLUDES REP'S IN A NON-PAY STATUS NUMBERING 219.

DEPARTMENT OF DEFENSE
WASHINGTON HEADQUARTERS SERVICES
DIRECTORATE FOR INFORMATION
OPERATIONS AND REPORTS

TABLE R14.0

DEPARTMENT OF DEFENSE
RESERVE COMPONENT PERSONNEL BY RESERVE CATEGORY
NOT ON ACTIVE DUTY

TOTAL

DATE	TOTAL	READY	STANDBY	RETIRED
31 OCT 1978	2,105,643	1,145,651	169,144	791,848
30 NOV 1978	2,099,265	1,147,552	157,931	793,782
31 DEC 1978	2,097,411	1,151,253	152,595	793,563
31 JAN 1979	2,091,285	1,151,135	144,227	795,923
28 FEB 1979	2,092,893	1,157,516	139,035	796,342
31 MAR 1979	2,092,419	1,166,155	132,679	793,585
30 APR 1979	2,096,931	1,172,987	127,626	796,318
31 MAY 1979	2,092,121	1,175,846	118,255	798,020
30 JUN 1979	2,093,845	1,181,098	113,011	799,736
31 JUL 1979	2,088,691	1,178,602	108,634	801,455
31 AUG 1979	2,175,892	1,194,813	106,425	874,654
30 SEP 1979	2,108,840	1,202,642	103,421	802,777
31 OCT 1979	2,119,750	1,213,769	103,160	802,821
30 NOV 1979	2,126,363	1,220,242	101,822	804,299
31 DEC 1979	2,130,130	1,223,844	101,554	804,732
31 JAN 1980	2,129,646	1,223,082	99,484	807,080
28 FEB 1980	2,133,456	1,227,561	97,545	808,350
31 MAR 1980	2,132,165	1,226,255	96,006	809,904

TABLE R14.0
 DEPARTMENT OF DEFENSE
 RESERVE COMPONENT PERSONNEL BY RESERVE CATEGORY
 NOT ON ACTIVE DUTY

OFFICERS

DATE	TOTAL	READY	STANDBY	RETIRED
31 OCT 1978	680,208	191,477	95,981	392,750
30 NOV 1978	680,125	191,899	95,173	393,053
31 DEC 1978	679,224	189,816	96,841	392,567
31 JAN 1979	681,729	190,394	96,725	394,610
28 FEB 1979	682,257	190,556	96,874	394,827
31 MAR 1979	679,842	190,908	95,841	393,093
30 APR 1979	680,370	191,072	94,805	394,493
31 MAY 1979	673,812	189,569	88,988	395,255
30 JUN 1979	670,942	187,138	88,256	395,548
31 JUL 1979	665,786	183,868	85,830	396,088
31 AUG 1979	649,548	182,709	85,453	381,386
30 SEP 1979	663,727	182,710	84,836	396,181
31 OCT 1979	663,212	182,299	84,561	396,352
30 NOV 1979	664,288	183,819	83,693	396,776
31 DEC 1979	663,133	182,559	83,665	396,909
31 JAN 1980	662,563	182,745	82,281	397,537
28 FEB 1980	663,894	184,484	81,132	398,278
31 MAR 1980	664,441	184,584	81,008	398,849

TABLE R14 0
 DEPARTMENT OF DEFENSE
 RESERVE COMPONENT PERSONNEL BY RESERVE CATEGORY
 NOT ON ACTIVE DUTY

ENLISTED A/

DATE	TOTAL	READY	STANDBY	RETIRED
31 OCT 1978	1,425,435	954,174	72,163	399,098
30 NOV 1978	1,419,140	955,653	62,758	400,729
31 DEC 1978	1,418,187	961,437	59,754	400,996
31 JAN 1979	1,409,556	960,741	47,502	401,313
28 FEB 1979	1,410,636	966,960	42,161	401,515
31 MAR 1979	1,412,577	975,247	36,838	400,492
30 APR 1979	1,416,561	981,915	32,821	401,825
31 MAY 1979	1,418,309	986,277	29,267	402,765
30 JUN 1979	1,422,903	993,960	24,755	404,188
31 JUL 1979	1,422,905	994,734	22,804	405,367
31 AUG 1979	1,526,344	1,012,104	20,972	493,268
30 SEP 1979	1,445,113	1,019,932	18,585	406,596
31 OCT 1979	1,456,538	1,031,470	18,599	406,469
30 NOV 1979	1,462,075	1,036,423	18,129	407,523
31 DEC 1979	1,466,997	1,041,285	17,889	407,823
31 JAN 1980	1,467,083	1,040,337	17,203	409,543
28 FEB 1980	1,469,562	1,043,077	16,413	410,072
31 MAR 1980	1,467,724	1,041,671	14,998	411,055

A/ INCLUDES OFFICER CANDIDATES

TABLE R18.0

DEPARTMENT OF DEFENSE
SELECTED RESERVE

DATE	TOTAL	DRILL PAY STATUS	INITIAL ACTIVE DUTY TRAINING
31 OCT 1978	786,866	762,851	24,015
30 NOV 1978	786,360	762,164	24,196
31 DEC 1978	785,852	764,005	21,847
31 JAN 1979	786,762	764,610	22,152
28 FEB 1979	790,326	768,656	21,670
31 MAR 1979	793,081	770,712	22,369
30 APR 1979	795,506	773,314	22,192
31 MAY 1979	796,598	773,949	22,649
30 JUN 1979	797,919	769,577	28,342
31 JUL 1979	799,766	768,380	31,386
31 AUG 1979	800,597	769,446	31,151
30 SEP 1979	807,136	778,226	28,910
31 OCT 1979	805,869	778,318	27,551
30 NOV 1979	808,630	781,895	26,735
31 DEC 1979	810,860	787,399	23,461
31 JAN 1980	812,859	789,438	23,421
28 FEB 1980	817,152	793,025	24,127
31 MAR 1980	818,348	793,245	25,103

DEPARTMENT OF DEFENSE
WASHINGTON HEADQUARTERS SERVICES
DIRECTORATE FOR INFORMATION
OPERATIONS AND REPORTS

TABLE R21.0
 DEPARTMENT OF DEFENSE
 RESERVE PERSONNEL ON ACTIVE DUTY BY COMPONENT

MARCH 31, 1980

COMPONENT/PERSONNEL	TOTAL	OFFICER	ENLISTED A/
TOTAL DEPARTMENT OF DEFENSE	167,030	110,027	57,003
ARMY - TOTAL	54,661	49,122	5,539
NATIONAL GUARD OF THE U. S.	1,846	464	1,382
ARMY RESERVE	52,815	48,658	4,157
NAVAL RESERVE	66,039	15,430	50,609
MARINE CORPS RESERVE	4,957	4,579	378
AIR FORCE - TOTAL	41,373	40,896	477
AIR NATIONAL GUARD OF THE U. S.	299	168	131
AIR FORCE RESERVE	41,074	40,728	346

A/ INCLUDES OFFICER CANDIDATES.

DEPARTMENT OF DEFENSE
 WASHINGTON HEADQUARTERS SERVICES
 DIRECTORATE FOR INFORMATION
 OPERATIONS AND REPORTS

TABLE R22.0

DEPARTMENT OF DEFENSE
RESERVE STRENGTH ON ACTIVE DUTY A/

DATE	TOTAL DOD	ARMY				AIR FORCE		
		NATIONAL GUARD	ARMY RESERVE	NAVAL RESERVE	MARINE CORPS RESERVE	AIR NATIONAL GUARD	AIR FORCE RESERVE	
31 OCT 1978	158,674	1,561	52,165	59,761	5,624	300	39,263	
30 NOV 1978	158,346	1,545	51,787	59,811	5,616	300	39,287	
31 DEC 1978	157,997	1,553	51,667	60,225	5,579	318	38,655	
31 JAN 1979	158,234	1,508	51,903	60,180	5,538	314	38,791	
28 FEB 1979	158,246	1,523	52,062	60,658	5,433	208	38,362	
31 MAR 1979	158,602	1,488	52,095	60,832	5,232	312	38,643	
30 APR 1979	159,171	1,477	51,994	61,414	5,181	302	38,803	
31 MAY 1979	159,769	1,454	52,025	61,560	5,109	297	39,324	
30 JUN 1979	161,927	1,477	53,184	61,924	5,164	295	39,883	
31 JUL 1979	161,660	1,588	52,558	62,170	5,325	293	39,746	
31 AUG 1979	161,881	1,592	52,467	61,987	5,126	286	40,423	
30 SEP 1979	165,089	1,617	52,924	63,836	5,060	299	41,353	
31 OCT 1979	165,200	1,790	52,850	64,014	5,119	299	41,128	
30 NOV 1979	165,287	1,792	52,495	64,179	5,076	301	41,444	
31 DEC 1979	164,506	1,700	52,196	64,423	5,025	296	40,866	
31 JAN 1980	165,369	1,807	52,963	64,773	4,959	306	40,561	
28 FEB 1980	161,285	588	49,150	65,711	4,857	297	40,682	
31 MAR 1980	167,030	1,846	52,815	66,039	4,957	299	41,074	

A/ CONTINUOUS OR EXTENDED ACTIVE DUTY.
EXCLUDES ACTIVE DUTY FOR RESERVE TRAINING.

DEPARTMENT OF DEFENSE
WASHINGTON HEADQUARTERS SERVICES
DIRECTORATE FOR INFORMATION
OPERATIONS AND REPORTS

TABLE R23.0

DEPARTMENT OF DEFENSE
RESERVE PERSONNEL BY COMPONENT AND CATEGORY
MAY 31, 1960

MARCH 31, 1960

COMPONENT/ PERSONNEL	TOTAL	NAT'L GUARD DEFENSE U.S.A.	ARMY RESERVE	NAVAL RESERVE	MARINE CORPS RESERVE	AIR B/ NAT'L GUARD OF THE U.S.	AIR FORCE RESERVE
TOTAL	2,132,135	385,055	831,081	533,175	98,190	94,304	417,169
OFFICER ENLISTED C/	592,441	34,921	243,132	182,042	12,126	11,652	169,118
	1,539,724	350,134	587,949	351,133	86,064	82,652	248,051
READY RESERVE OFFICER ENLISTED C/	1,225,215	251,075	323,278	180,095	90,762	94,304	103,760
	313,509	34,921	72,238	32,807	5,514	11,652	23,371
	1,041,691	318,154	251,039	147,288	84,548	82,652	80,389
STANDBY RESERVE OFFICER ENLISTED	98,000	-	25,741	25,459	1,950	-	42,826
	81,000	-	20,000	20,000	1,702	-	37,426
	17,000	-	5,741	4,459	248	-	5,400
ACTIVE STATUS OFFICER ENLISTED	20,479	-	13,700	4,356	1,868	-	9,456
	10,815	-	6,813	58	1,620	-	6,219
	12,664	-	6,887	4,298	248	-	3,237
INACTIVE STATUS OFFICER ENLISTED	66,536	-	11,581	21,103	82	-	33,370
	64,102	-	11,981	20,923	82	-	31,207
	2,434	-	-	180	-	-	2,163
RETIRED RESERVE OFFICER ENLISTED	802,904	-	400,232	127,921	5,468	-	270,583
	500,519	-	173,434	107,164	3,850	-	108,321
	302,385	-	226,800	20,757	1,618	-	162,262

A/ INCLUDES "INACTIVE NATIONAL GUARD" NUMBERS 3,179 TOTAL, 644 OFFICERS, 2,535 ENLISTED AND RESERVE (NATIONAL GUARD) IN A NONPAY STATUS NUMBERING 1,800.

B/ INCLUDES 229 IN A NONPAY STATUS NUMBERING 211.

C/ INCLUDES OFFICERS 600 AND 15.

DEPARTMENT OF DEFENSE
WASHINGTON HEADQUARTERS SERVICES
DEFICIT FOR INFORMATION
OPERATIONS AND REPORTS

TABLE R24.0

DEPARTMENT OF DEFENSE
RESERVE STRENGTH NOT ON ACTIVE DUTY A/

DATE	TOTAL DOD	ARMY				AIR FORCE		
		B/ NATIONAL GUARD	ARMY RESERVE	NAVAL RESERVE	MARINE CORPS RESERVE	AIR NATIONAL GUARD	AIR FORCE RESERVE	
31 OCT 1978	2,105,643	348,935	816,414	339,584	97,929	91,697	411,084	
30 NOV 1978	2,099,265	347,699	815,529	336,404	97,629	91,692	410,312	
31 DEC 1978	2,097,411	347,063	816,884	334,469	97,243	91,757	409,995	
31 JAN 1979	2,091,285	347,365	812,848	331,703	97,076	91,769	410,524	
28 FEB 1979	2,092,893	349,030	814,378	330,096	97,112	91,996	410,281	
31 MAR 1979	2,092,419	349,057	817,979	328,354	95,308	92,272	409,449	
30 APR 1979	2,096,931	349,323	820,308	328,257	96,600	92,476	409,967	
31 MAY 1979	2,092,121	349,460	816,170	326,844	95,799	92,854	410,994	
30 JUN 1979	2,093,845	348,852	818,038	326,763	96,064	92,946	411,182	
31 JUL 1979	2,088,691	348,415	813,158	324,210	97,946	93,109	411,853	
31 AUG 1979	2,175,892	348,099	823,115	325,938	99,484	93,416	485,840	
30 SEP 1979	2,108,840	350,041	823,162	326,527	100,378	93,599	415,133	
31 OCT 1979	2,119,750	350,631	830,256	328,822	100,732	93,650	415,659	
30 NOV 1979	2,126,363	351,959	831,425	331,478	102,232	93,474	415,795	
31 DEC 1979	2,130,130	353,553	833,887	333,015	99,881	93,598	416,196	
31 JAN 1980	2,129,646	354,014	833,203	333,036	99,317	93,798	416,278	
28 FEB 1980	2,133,456	356,567	833,047	334,155	99,039	93,955	416,693	
31 MAR 1980	2,132,165	358,056	831,281	333,175	98,180	94,304	417,169	

A/ INCLUDES RESERVES ON ACTIVE DUTY
FOR RESERVE TRAINING PURPOSES.

B/ INCLUDES "INACTIVE" NATIONAL GUARD.

DEPARTMENT OF DEFENSE
WASHINGTON HEADQUARTERS SERVICES
DIRECTORATE FOR INFORMATION
OPERATIONS AND REPORTS

TABLE R26.5

DEPARTMENT OF DEFENSE
SELECTED RESERVE DRILL PAY STRENGTH

MARCH 31, 1980

COMPONENT/ PERSONNEL	TOTAL	DRILL PAY STATUS A/	INITIAL ACTIVE DUTY TRAINING B/
TOTAL DOD	818,346	793,245	25,103
OFFICERS	114,977	114,977	-
ENLISTED	703,371	678,268	25,103
ARMY NATIONAL GUARD	353,077	339,546	13,531
OFFICERS	35,677	35,677	-
ENLISTED	317,400	303,869	13,531
ARMY RESERVE	193,802	188,106	5,696
OFFICERS	35,531	35,531	-
ENLISTED	158,271	152,575	5,696
NAVAL RESERVE	86,713	85,854	859
OFFICERS	16,720	16,720	-
ENLISTED	69,993	69,134	859
MARINE CORPS RESERVE	33,406	30,707	2,699
OFFICERS	2,421	2,421	-
ENLISTED	30,985	28,286	2,699
AIR NATIONAL GUARD	94,085	92,368	1,717
OFFICERS	11,652	11,652	-
ENLISTED	82,433	80,716	1,717
AIR FORCE RESERVE	57,265	56,664	601
OFFICERS	12,976	12,976	-
ENLISTED	44,289	43,688	601

A/ INCLUDES PAY GROUPS A, B, C, M, P, T, Q.

B/ INCLUDES PAY GROUPS F AND U.

DEPARTMENT OF DEFENSE
WASHINGTON HEADQUARTERS SERVICES
DIRECTORATE FOR INFORMATION
OPERATIONS AND REPORTS

ND