

AD-A152 911

MILITARY MANPOWER STATISTICS, JULY, FY-80. (U)
WASHINGTON HEADQUARTERS SERVICE (DOD) DIR FOR INFO
OP & RPTS. JUL 80. DIOR/M03-80/10

171

UNCLASSIFIED

F/G 5/9

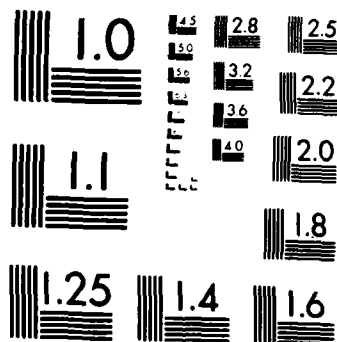
N/L

1 OF 1
AD A152 911

END
FILMED
11/04/85

1 OF 1

AD-A152 911



MICROCOPY RESOLUTION TEST CHART
NATIONAL BUREAU OF STANDARDS-1963-A

**THIS REPORT IS UNCLASSIFIED AND
ITS DISTRIBUTION IS UNLIMITED**

MILITARY MANPOWER STATISTICS

as of JULY 1980



4
3
28
10

DEPARTMENT OF DEFENSE
WASHINGTON HEADQUARTERS SERVICES
DIRECTORATE FOR INFORMATION
OPERATIONS AND REPORTS

FOREWORD

MILITARY MANPOWER STATISTICS (MMS) is a monthly publication prepared by the Washington Headquarters Services, Directorate for Information Operations and Reports (WHS/DIOR) of the Office of the Secretary of Defense.

MMS presents audited statistical data pertaining to active duty military, reserve components, and retired military personnel of the Department of Defense. The publication is generated from a computerized data base developed and maintained by the Manpower Management Information Division of WHS/DIOR.

Requests for additional copies and changes in distribution should be addressed to the Director, Washington Headquarters Services, Room 3E843, The Pentagon, Washington, DC 20301.

TABLE OF CONTENTS

<u>Number</u>	<u>Title</u>
Table P10	Military/Civilian Personnel
Table P11	Department of Defense Manpower Comparison
Table P22.1	Total Active Duty Military Personnel by Service
Table P23.1	Active Duty Officer Personnel and Percent of Total Military Personnel by Service
Table P23.3	Total Active Duty Military Personnel by Type
Table P23.4	Army Active Duty Military Personnel by Type
Table P23.5	Navy Active Duty Military Personnel by Type
Table P23.6	Marine Corps Active Duty Military Personnel by Type
Table P23.7	Air Force Active Duty Military Personnel by Type
Table P23.41	Army Active Duty Military Personnel
Table P23.51	Navy Active Duty Military Personnel
Table P23.61	Marine Corps Active Duty Military Personnel
Table P23.71	Air Force Active Duty Military Personnel
Table P25.6	Women Military Personnel on Active Duty Officers and Enlisted by Service
Table P26.0	Military Personnel on Active Duty by Grade in Which Serving
Table P26.04	Military Personnel on Active Duty by Grade in Which Serving - Regular
Table P26.05	Military Personnel on Active Duty by Grade in Which Serving - Reserve

Number

Title

Table P27.1	Summary of Enlisted Personnel Procurement
Table P27.21	Army Enlisted Personnel Procurement
Table P27.22	Navy Enlisted Personnel Procurement
Table P27.23	Marine Corps Enlisted Personnel Procurement
Table P27.24	Air Force Enlisted Personnel Procurement
Table R11.0	Reserve Component Strength Summary
Table R12.0	Reserve Strength - Officer and Enlisted Not on Active Duty
Table R13.0	Ready Reserve and Active Duty Strength Compared to Statutory Limitation
Table R14.0	Reserve Component Personnel by Reserve Category Not on Active Duty - Total
Table R14.0	Reserve Component Personnel by Reserve Category Not on Active Duty - Officers
Table R14.0	Reserve Component Personnel by Reserve Category Not on Active Duty - Enlisted
Table R18.0	Selected Reserve
Table R21.0	Reserve Personnel on Active Duty by Component
Table R22.0	Reserve Strength on Active Duty
Table R23.0	Reserve Personnel by Component and Category Not on Active Duty
Table R24.0	Reserve Strength Not on Active Duty
Table R26.5	Selected Reserve Drill Pay Strength

TABLE P10

DEPARTMENT OF DEFENSE
MILITARY/CIVILIAN PERSONNEL

	TOTAL DOD	ARMY	NAVY	MARINE CORPS	AIR FORCE
1. ACTIVE DUTY MILITARY AS OF 31 JUL 1980					
OFFICER ENLISTED ACADEMY CADETS	278,166 1,753,015 12,345	98,704 669,487 4,479	62,728 458,999 3,317	18,246 167,794 -	98,488 456,735 4,549
TOTAL ACTIVE DUTY MILITARY	2,043,526	772,670	525,044	186,040	559,772
2. GUARD AND RESERVES AS OF 31 JUL 1980					
NATIONAL GUARD IN PAID STATUS	460,449 453,895	365,194 358,912	- -	- -	95,255 94,983
RESERVES IN PAID STATUS	1,684,154 375,741	838,023 198,072	331,079 85,359	100,483 34,533	414,569 57,777
TOTAL GUARD AND RESERVES IN PAID STATUS	2,144,603 829,636	1,203,217 556,984	331,079 85,359	100,483 34,533	509,824 152,760
3. OFFICER TRAINING IN COLLEGES A/ AS OF OCTOBER 1979					
	93,295	65,186	7,633	-	20,476
4. CIVILIAN PERSONNEL - MILITARY AND CIVIL FUNCTIONS B/					
AS OF 31 JUL 1980	TOTAL DOD	ARMY	C/ NAVY	AIR FORCE	OTHER D/ DEFENSE AGENCIES
DIRECT HIRE	989,601	361,974	317,489	239,573	70,565
INDIRECT HIRE	73,938	48,416	10,667	13,134	1,721
TOTAL CIVILIAN PERSONNEL	1,063,539	410,390	328,156	252,707	72,286

A/ EXCLUDES 166,212 IN JUNIOR DIVISION, MILITARY SCHOOLS AND NATIONAL DEFENSE CADETS CORPS.
 B/ INCLUDES CIVIL FUNCTIONS EMPLOYMENT OF 37,557 ARMY AND AIR FORCE, ALSO INCLUDES DISADVANTAGED YOUTH EMPLOYEES.
 C/ INCLUDES MARINE CORPS PERSONNEL.
 D/ INCLUDES OSD/JCS.

DEPARTMENT OF DEFENSE
WASHINGTON HEADQUARTERS SERVICES
DIRECTORATE FOR INFORMATION
OPERATIONS AND REPORTS

TABLE P11
DOD MANPOWER COMPARISON
(MILITARY & CIVIL FUNCTIONS)

DATE	TOTAL DOD	ARMY		AIR FORCE		NAVY AND MARINE CORPS			A/ GSD/ JCS			
		MILI-TARY	B/ CIVIL- IAN	MILI-TARY	B/ CIVIL- IAN	NAVY MILI-TARY	MARINE CORPS MILI-TARY	B/ CIVIL- IAN		TOTAL		
31 OCT 79	2,993,174	763,922	345,338	1,109,260	559,216	233,289	792,505	521,887	184,539	308,633	1,015,059	76,350
30 NOV 79	2,996,675	765,602	347,628	1,113,230	558,462	233,730	792,192	521,337	183,796	309,486	1,014,619	76,634
31 DEC 79	2,987,435	759,620	347,564	1,107,184	556,861	233,406	790,267	521,857	181,902	309,334	1,013,093	76,891
31 JAN 80	2,992,229	765,916	345,598	1,111,514	557,516	232,708	790,224	523,179	182,020	309,088	1,014,287	76,204
28 FEB 80	2,986,916	766,680	344,948	1,111,628	557,883	232,771	791,654	525,485	182,358	309,392	1,017,235	76,389
31 MAR 80	2,997,333	766,819	346,858	1,113,677	558,133	232,898	791,031	525,787	182,328	310,241	1,018,356	76,269
30 APR 80	2,997,238	764,251	348,543	1,112,794	556,935	232,925	789,860	525,559	181,322	312,191	1,019,152	76,432
31 MAY 80	3,006,373	764,874	352,106	1,116,980	556,310	234,327	790,637	529,078	181,132	312,191	1,022,401	76,355
30 JUN 80	3,023,982	765,506	361,713	1,127,219	558,608	239,131	797,739	527,427	184,551	316,517	1,028,495	70,529
31 JUL 80	3,033,127	772,670	361,974	1,134,644	559,772	239,573	799,345	525,044	186,040	317,489	1,028,573	70,565

A/ CIVILIAN PERSONNEL. MILITARY PERSONNEL ASSIGNED TO GSD, GJCS AND OTHER DEFENSE ACTIVITIES ARE REPORTED BY THEIR RESPECTIVE SERVICES.

B/ -TOTAL PAID EMPLOYEES- AS REPORTED OFFICIALLY TO THE OFFICE OF PERSONNEL MANAGEMENT; EXCLUDES OVERSEAS SUPPORT PERSONNEL (INDIRECT HIRE).

DEPARTMENT OF DEFENSE
WASHINGTON HEADQUARTERS SERVICES
DIRECTORATE FOR INFORMATION
OPERATIONS AND REPORTS

TABLE P22.1

DEPARTMENT OF DEFENSE
TOTAL ACTIVE DUTY MILITARY PERSONNEL BY SERVICE

DATE	TOTAL DOD	ARMY	NAVY	MARINE CORPS	AIR FORCE
OCT 31, 1979	2,029,564	763,922	521,887	184,539	559,216
NOV 30, 1979	2,029,197	765,602	521,337	183,796	558,462
DEC 31, 1979	2,020,240	759,620	521,857	181,902	556,861
JAN 31, 1980	2,028,631	765,916	523,179	182,020	557,516
FEB 28, 1980	2,032,406	766,680	525,485	182,358	557,883
MAR 31, 1980	2,033,067	766,819	525,787	182,328	558,133
APR 30, 1980	2,028,067	764,251	525,559	181,322	556,935
MAY 31, 1980	2,031,394	764,874	529,078	181,132	556,310
JUN 30, 1980	2,036,092	765,506	527,427	184,551	556,608
JUL 31, 1980	2,043,526	772,670	525,044	186,040	559,772

DEPARTMENT OF DEFENSE
WASHINGTON HEADQUARTERS SERVICES
DIRECTORATE FOR INFORMATION
OPERATIONS AND REPORTS

TABLE P23.1

DEPARTMENT OF DEFENSE
ACTIVE DUTY OFFICER PERSONNEL AND PERCENT OF TOTAL MILITARY PERSONNEL, BY SERVICE

DATE	TOTAL DOD		ARMY		NAVY		MARINE CORPS		AIR FORCE	
	NUMBER	%	NUMBER	%	NUMBER	%	NUMBER	%	NUMBER	%
OCT 31, 1979	272,799	13.4	96,864	12.7	62,099	11.9	18,162	9.8	95,674	17.1
NOV 30, 1979	272,796	13.4	96,388	12.6	62,159	11.9	18,060	9.8	96,189	17.2
DEC 31, 1979	272,618	13.5	96,338	12.7	61,991	11.9	18,103	10.0	96,186	17.3
JAN 31, 1980	273,149	13.5	96,670	12.6	61,989	11.8	18,011	9.9	96,479	17.3
FEB 28, 1980	273,009	13.4	96,320	12.6	61,999	11.8	18,169	10.0	96,521	17.3
MAR 31, 1980	273,173	13.4	96,313	12.6	62,070	11.8	18,125	9.9	96,665	17.3
APR 30, 1980	273,806	13.5	96,092	12.6	62,529	11.9	18,082	10.0	97,103	17.4
MAY 31, 1980	277,866	13.7	97,780	12.8	63,630	12.0	18,199	10.0	98,257	17.7
JUN 30, 1980	278,543	13.7	98,260	12.8	63,469	12.0	18,468	10.0	98,346	17.6
JUL 31, 1980	278,166	13.6	98,704	12.8	62,728	11.9	18,246	9.8	98,488	17.6

DEPARTMENT OF DEFENSE
WASHINGTON HEADQUARTERS SERVICES
DIRECTORATE FOR INFORMATION
OPERATIONS AND REPORTS

TABLE P23.3
 DEPARTMENT OF DEFENSE
 TOTAL ACTIVE DUTY MILITARY PERSONNEL BY TYPE

DATE	OFFICERS	ENLISTED	A/ OFFICER CANDIDATES	TOTAL
OCT 31, 1979	272,799	1,743,775	12,990	2,029,564
NOV 30, 1979	272,796	1,743,472	12,929	2,029,197
DEC 31, 1979	272,618	1,734,707	12,915	2,020,240
JAN 31, 1980	273,149	1,742,745	12,737	2,028,631
FEB 28, 1980	273,009	1,746,703	12,694	2,032,406
MAR 31, 1980	273,173	1,747,346	12,548	2,033,067
APR 30, 1980	273,806	1,741,789	12,472	2,028,067
MAY 31, 1980	277,866	1,742,972	10,556	2,031,394
JUN 30, 1980	278,543	1,746,468	11,081	2,036,092
JUL 31, 1980	278,166	1,753,015	12,345	2,043,526

A/ CONSISTS OF THE FOLLOWING:
 FOR ARMY - CADETS, U. S. MILITARY ACADEMY
 FOR NAVY - MIDSHIPMEN, U. S. NAVAL ACADEMY
 FOR AIR FORCE - CADETS, U. S. AIR FORCE ACADEMY

DEPARTMENT OF DEFENSE
 WASHINGTON HEADQUARTERS SERVICES
 DIRECTORATE FOR INFORMATION
 OPERATIONS AND REPORTS

TABLE P23.4

DEPARTMENT OF DEFENSE
ARMY ACTIVE DUTY MILITARY PERSONNEL BY TYPE

DATE	OFFICERS	ENLISTED	CADETS U. S. MILITARY ACADEMY	TOTAL
OCT 31, 1979	96,864	662,620	4,238	763,922
NOV 30, 1979	96,388	665,009	4,205	765,602
DEC 31, 1979	96,338	659,109	4,173	759,620
JAN 31, 1980	96,670	665,093	4,153	765,916
FEB 28, 1980	96,320	666,220	4,140	766,680
MAR 31, 1980	96,313	666,426	4,080	766,819
APR 30, 1980	96,092	664,110	4,049	764,251
MAY 31, 1980	97,780	663,962	3,132	764,874
JUN 30, 1980	98,260	664,130	3,116	765,506
JUL 31, 1980	98,704	669,487	4,479	772,670

DEPARTMENT OF DEFENSE
WASHINGTON HEADQUARTERS SERVICES
DIRECTORATE FOR INFORMATION
OPERATIONS AND REPORTS

TABLE P23.5

DEPARTMENT OF DEFENSE
NAVY ACTIVE DUTY MILITARY PERSONNEL BY TYPE

DATE	OFFICERS	ENLISTED	MIDSHIPMEN U.S. NAVAL ACADEMY	TOTAL
OCT 31, 1979	62,099	455,366	4,422	521,887
NOV 30, 1979	62,159	454,768	4,410	521,337
DEC 31, 1979	61,991	455,390	4,476	521,857
JAN 31, 1980	61,989	456,746	4,444	523,179
FEB 28, 1980	61,999	459,035	4,451	525,485
MAR 31, 1980	62,070	459,327	4,390	525,787
APR 30, 1980	62,529	458,665	4,365	525,559
MAY 31, 1980	63,630	461,084	4,364	529,078
JUN 30, 1980	63,469	460,587	3,371	527,427
JUL 31, 1980	62,728	458,999	3,317	525,044

DEPARTMENT OF DEFENSE
WASHINGTON HEADQUARTERS SERVICES
DIRECTORATE FOR INFORMATION
OPERATIONS AND REPORTS

TABLE P23.6
 DEPARTMENT OF DEFENSE
 MARINE CORPS ACTIVE DUTY MILITARY PERSONNEL BY TYPE

DATE	OFFICERS	ENLISTED	TOTAL
OCT 31, 1979	18,162	166,377	184,539
NOV 30, 1979	18,060	165,736	183,796
DEC 31, 1979	18,103	163,799	181,902
JAN 31, 1980	18,011	164,009	182,020
FEB 28, 1980	18,169	164,169	182,358
MAR 31, 1980	18,125	164,203	182,328
APR 30, 1980	18,082	163,240	181,322
MAY 31, 1980	18,199	162,933	181,132
JUN 30, 1980	18,468	166,083	184,551
JUL 31, 1980	18,246	167,794	186,040

DEPARTMENT OF DEFENSE
 WASHINGTON HEADQUARTERS SERVICES
 DIRECTORATE FOR INFORMATION
 OPERATIONS AND REPORTS

TABLE P23.7

DEPARTMENT OF DEFENSE
AIR FORCE ACTIVE DUTY MILITARY PERSONNEL BY TYPE

DATE	OFFICERS	ENLISTED	CADETS U. S. A. F. ACADEMY	TOTAL
OCT 31, 1979	95,674	459,212	4,330	559,216
NOV 30, 1979	96,189	457,959	4,314	558,462
DEC 31, 1979	96,186	456,409	4,266	556,861
JAN 31, 1980	96,479	456,897	4,140	557,516
FEB 28, 1980	96,521	457,259	4,103	557,883
MAR 31, 1980	96,565	457,390	4,078	558,133
APR 30, 1980	97,103	455,774	4,058	556,935
MAY 31, 1980	98,257	454,993	3,060	556,310
JUN 30, 1980	98,346	455,668	4,594	558,608
JUL 31, 1980	98,488	456,735	4,549	559,772

DEPARTMENT OF DEFENSE
WASHINGTON HEADQUARTERS SERVICES
DIRECTORATE FOR INFORMATION
OPERATIONS AND REPORTS

TABLE P23.41

DEPARTMENT OF DEFENSE
ARMY ACTIVE DUTY MILITARY PERSONNEL

REPORTED STRENGTH, AND ADJUSTMENTS TO REPORTED STRENGTH TO DERIVE "DIRECT PROGRAM STRENGTH" CHARGEABLE TO APPROPRIATION "MILITARY PERSONNEL, ARMY"

DATE	REPORTED STRENGTH	A/ (LESS) EXCLUDABLES	TOTAL PROGRAM STRENGTH	(LESS) REIMBURSABLES	OFF	ENL	TOTAL	OFFICER	ENLISTED	CADETS USMA
31 OCT 1979	763,922	495	763,424	391	391	154	762,879	95,978	662,663	4,238
30 NOV 1979	765,602	502	765,097	389	389	157	764,551	95,497	664,849	4,205
31 DEC 1979	759,620	500	759,117	388	388	156	758,573	95,450	658,950	4,173
31 JAN 1980	765,916	513	765,401	401	401	160	764,840	95,736	664,931	4,153
28 FEB 1980	766,680	518	766,159	402	402	158	765,599	95,400	666,059	4,140
31 MAR 1980	766,819	516	766,301	403	403	150	765,748	95,394	666,274	4,080
30 APR 1980	764,251	514	763,735	402	402	149	763,184	95,176	663,959	4,049
31 MAY 1980	764,874	508	764,364	408	408	155	763,801	96,864	663,805	3,132
30 JUN 1980	765,506	509	764,996	572	572	156	764,268	97,179	663,973	3,116
31 JUL 1980	772,670	503	772,165	566	566	157	771,442	97,635	669,328	4,479

A/ ACTIVE DUTY PERSONNEL PAID BY AN APPROPRIATION OTHER THAN MILITARY PERSONNEL, ARMY, AND EXCLUDED FROM THE END STRENGTH OF THE ARMY. COMPRISED OF CIVIL WORKS PERSONNEL, AND USAR AND ARNG PERSONNEL ON STATUTORY TOURS.

DEPARTMENT OF DEFENSE
WASHINGTON HEADQUARTERS SERVICES
DIRECTORATE FOR INFORMATION
OPERATIONS AND REPORTS

TABLE P23.51

DEPARTMENT OF DEFENSE
NAVY ACTIVE DUTY MILITARY PERSONNEL

REPORTED STRENGTH, AND ADJUSTMENTS TO REPORTED STRENGTH TO DERIVE "DIRECT PROGRAM STRENGTH" CHARGEABLE TO APPROPRIATION "MILITARY PERSONNEL, NAVY"

DATE	REPORTED STRENGTH	(LESS) PAID FROM A/ RES PERS APPN	TOTAL PROGRAM STRENGTH	(LESS) REIMBURSABLES	ENLISTED	TOTAL	OFFICER	ENLISTED	OFFICER	ENLISTED	DIRECT PROGRAM STRENGTH CHARGEABLE TO APPROPRIATION "MILITARY PERSONNEL, NAVY"	OFFICER CANDIDATES
31 OCT 1979	521,887	194	521,693	394	1,469	519,830	61,511	453,897	61,511	453,897	4,422	4,422
30 NOV 1979	521,337	195	521,142	400	1,484	519,258	61,564	453,284	61,564	453,284	4,410	4,410
31 DEC 1979	521,857	194	521,663	412	1,469	519,782	61,385	453,921	61,385	453,921	4,476	4,476
31 JAN 1980	523,179	194	522,985	416	1,470	521,099	61,379	455,276	61,379	455,276	4,444	4,444
28 FEB 1980	525,485	196	525,289	420	1,463	523,406	61,383	457,572	61,383	457,572	4,451	4,451
31 MAR 1980	525,787	195	525,592	420	1,441	523,731	61,455	457,886	61,455	457,886	4,390	4,390
30 APR 1980	525,559	92	525,367	413	1,407	523,547	61,924	457,258	61,924	457,258	4,365	4,365
31 MAY 1980	529,078	192	528,886	422	1,393	527,071	63,016	459,691	63,016	459,691	4,364	4,364
30 JUN 1980	527,427	195	527,232	419	1,317	525,496	62,855	459,270	62,855	459,270	3,371	3,371
31 JUL 1980	525,044	197	524,847	427	1,292	523,128	62,104	457,707	62,104	457,707	3,371	3,371

A/ NAVAL RESERVE PERSONNEL ON ACTIVE DUTY UNDER PROVISIONS OF SEC. 265, TITLE 10, U.S. CODE PAID FROM THE NAVAL RESERVE PERSONNEL APPROPRIATION.

DEPARTMENT OF DEFENSE
WASHINGTON HEADQUARTERS SERVICES
DIRECTORATE FOR INFORMATION OPERATIONS AND REPORTS

TABLE P23.61

DEPARTMENT OF DEFENSE
MARINE CORPS ACTIVE DUTY MILITARY PERSONNEL

REPORTED STRENGTH, AND ADJUSTMENTS TO REPORTED STRENGTH TO DERIVE "DIRECT PROGRAM STRENGTH" CHARGEABLE TO APPROPRIATION "MILITARY PERSONNEL, MARINE CORPS"

DATE	REPORTED STRENGTH	(LESS) PAID FROM A/ RES PERS APPN	TOTAL PROGRAM STRENGTH	(LESS) REIMBURSABLES	OFFICER ENLISTED	TOTAL	OFFICER ENLISTED	TOTAL	OFFICER ENLISTED	OFFICER ENLISTED	OFFICER CANDIDATES
31 OCT 1979	184,539	64	184,475	21	1	184,453	18,077	166,376	18,077	166,376	-
30 NOV 1979	183,796	65	183,731	21	1	183,709	17,974	165,735	17,974	165,735	-
31 DEC 1979	181,902	64	181,838	21	1	181,816	18,018	163,798	18,018	163,798	-
31 JAN 1980	182,020	64	181,956	21	1	181,934	17,926	164,008	17,926	164,008	-
28 FEB 1980	182,358	65	182,293	21	1	182,271	18,083	164,188	18,083	164,188	-
31 MAR 1980	182,328	67	182,261	21	1	182,239	18,037	164,202	18,037	164,202	-
30 APR 1980	181,322	67	181,255	21	1	181,233	17,994	163,239	17,994	163,239	-
31 MAY 1980	181,132	67	181,065	20	1	181,044	18,112	162,932	18,112	162,932	-
30 JUN 1980	184,551	67	184,484	19	1	184,464	18,382	166,082	18,382	166,082	-
31 JUL 1980	186,040	67	185,973	23	1	185,949	18,156	167,793	18,156	167,793	-

A/ MARINE CORPS RESERVE PERSONNEL ON ACTIVE DUTY UNDER PROVISIONS OF SEC. 265, TITLE 10, U.S. CODE PAID FROM THE MARINE CORPS RESERVE PERSONNEL APPROPRIATION.

DEPARTMENT OF DEFENSE
WASHINGTON HEADQUARTERS SERVICES
DIRECTORATE FOR INFORMATION
OPERATIONS AND REPORTS

TABLE P23.71

DEPARTMENT OF DEFENSE
AIR FORCE ACTIVE DUTY MILITARY PERSONNEL

REPORTED STRENGTH, AND ADJUSTMENTS TO REPORTED STRENGTH TO DERIVE "DIRECT PROGRAM STRENGTH" CHARGEABLE TO APPROPRIATION "MILITARY PERSONNEL, AIR FORCE"

DATE	REPORTED STRENGTH	(LESS) ANG/AFR	TOTAL PROGRAM STRENGTH	(LESS) REIMBURSABLES		TOTAL	DIRECT PROGRAM STRENGTH CHARGEABLE TO APPROP. "MILITARY PERSONNEL, AIR FORCE"		USAF & AVCADS
				OFFICER	ENLISTED		TOTAL	OFFICER	
31 OCT 1979	559,216	233	558,983						
30 NOV 1979	556,462	236	556,226						
31 DEC 1979	556,861	234	556,627						
31 JAN 1980	557,516	243	557,273						
28 FEB 1980	557,883	236	557,647						
31 MAR 1980	558,133	237	557,896						
30 APR 1980	556,935	235	556,700						
31 MAY 1980	556,310	231	556,079						
30 JUN 1980	558,608	235	558,373						
31 JUL 1980	559,772	234	559,538						

DEPARTMENT OF DEFENSE
WASHINGTON HEADQUARTERS SERVICES
DIRECTORATE FOR INFORMATION
OPERATIONS AND REPORTS

TABLE P25.6

DEPARTMENT OF DEFENSE
WOMEN MILITARY PERSONNEL ON ACTIVE DUTY, OFFICERS, AND ENLISTED BY SERVICE

DATE	TOTAL DOD			ARMY			NAVY			MARINE CORPS			AIR FORCE		
	TOTAL	OFF	ENL	TOTAL	OFF	ENL	TOTAL	OFF	ENL	TOTAL	OFF	ENL	TOTAL	OFF	ENL
31 OCT 79	153,265	19,050	134,215	63,806	6,961	56,845	29,955	4,378	25,577	5,922	456	5,466	53,682	7,255	46,427
30 NOV 79	155,902	19,209	136,693	64,668	6,873	57,795	30,366	4,432	25,934	6,026	456	5,570	54,642	7,448	47,194
31 DEC 79	156,851	19,241	137,610	64,425	6,882	57,543	31,077	4,410	26,667	6,057	464	5,593	55,292	7,485	47,807
31 JAN 80	159,231	19,470	139,761	65,503	6,907	58,596	31,610	4,488	27,122	6,143	482	5,661	55,975	7,593	48,382
28 FEB 80	161,163	19,588	141,575	65,721	6,894	58,827	32,368	4,529	27,839	6,198	481	5,717	56,876	7,684	49,192
31 MAR 80	162,201	19,806	142,395	65,501	6,982	58,519	32,801	4,562	28,239	6,248	475	5,773	57,651	7,787	49,864
30 APR 80	162,363	19,862	142,501	65,034	6,948	58,086	33,257	4,576	28,681	6,288	474	5,814	57,784	7,864	49,920
31 MAY 80	163,306	20,388	142,918	64,736	7,213	57,523	33,794	4,639	29,155	6,309	483	5,826	58,467	8,053	50,414
30 JUN 80	164,892	20,536	144,356	65,037	7,262	57,775	33,942	4,671	29,271	6,463	501	5,962	59,450	8,102	51,348
31 JUL 80	166,803	20,980	145,823	66,161	7,468	58,693	34,135	4,700	29,435	6,477	497	5,980	60,030	8,315	51,715

DEPARTMENT OF DEFENSE
WASHINGTON HEADQUARTERS SERVICES
DIRECTORATE FOR INFORMATION
OPERATIONS AND REPORTS

TABLE P26.0

DEPARTMENT OF DEFENSE
MILITARY PERSONNEL ON ACTIVE DUTY BY GRADE IN WHICH SERVING A/

JULY 31, 1980

RANK/GRADE	ARMY	NAVY	MARINE CORPS	AIR FORCE
TOTAL DOD	1	-	-	-
GENERAL OF ARMY - FLEET ADMIRAL	1	-	-	-
GENERAL - ADMIRAL	32	8	2	13
LT GENERAL - VICE ADMIRAL	110	32	7	39
MAJ GENERAL - REAR ADMIRAL (U)	412	92	24	125
BRIG GENERAL - REAR ADMIRAL (L)	549	124	33	178
COLONEL - CAPTAIN	14,096	3,507	581	5,324
LIEUTENANT COL - COMMANDER	30,112	7,410	1,505	13,034
MAJOR - LT COMMANDER	49,532	12,230	2,863	18,433
CAPTAIN - LIEUTENANT	84,241	17,193	4,622	35,555
1ST LIEUTENANT - LIEUTENANT (JG)	37,977	9,960	4,798	10,139
2ND LIEUTENANT - ENSIGN	40,569	9,113	2,575	15,647
CHIEF WARRANT OFFICER W-4	2,136	574	187	1
CHIEF WARRANT OFFICER W-3	4,441	521	53	-
CHIEF WARRANT OFFICER W-2	7,757	1,964	523	-
WARRANT OFFICER W-1	3,201	-	473	-
TOTAL OFFICERS	278,166	62,728	18,246	98,488
E-9	12,551	3,294	1,203	4,316
E-8	33,412	8,549	2,912	8,830
E-7	116,117	29,494	8,210	32,900
E-6	206,471	67,084	12,441	51,522
E-5	321,214	81,477	23,939	98,248
E-4	403,813	103,843	25,106	106,263
E-3	297,340	60,854	43,217	96,933
E-2	177,087	48,084	28,280	31,340
E-1	185,010	56,320	22,486	26,383
TOTAL ENLISTED	1,753,015	458,999	167,794	456,735
CADETS & MIDSHIPMEN	12,345	3,317	-	4,549
GRAND TOTAL	2,043,526	525,044	186,040	559,772

A/ INCLUDES REIMBURSABLE ACTIVE DUTY
MILITARY PAY STRENGTHS AND ACTIVE
DUTY MILITARY PERSONNEL PAID FROM
CIVIL FUNCTIONS, RESERVE, AND
NATIONAL GUARD APPROPRIATIONS.

DEPARTMENT OF DEFENSE
WASHINGTON HEADQUARTERS SERVICES
DIRECTORATE FOR INFORMATION
OPERATIONS AND REPORTS

TABLE P26.04
 DEPARTMENT OF DEFENSE
 MILITARY PERSONNEL ON ACTIVE DUTY BY GRADE IN WHICH SERVING

REGULAR A/
 JULY, 1980

RANK/GRADE	ARMY	NAVY	MARINE CORPS	AIR FORCE
GENERAL OF ARMY - FLEET ADMIRAL	1	-	-	-
GENERAL - ADMIRAL	32	8	2	13
LT GENERAL - VICE ADMIRAL	109	32	7	39
MAJ GENERAL - REAR ADMIRAL (U)	403	91	23	120
BRIG GENERAL - REAR ADMIRAL (L)	544	123	33	176
COLONEL - CAPTAIN	13,345	3,356	558	5,038
LIEUTENANT COL - COMMANDER	29,542	6,949	1,481	11,858
MAJOR - LT COMMANDER	37,041	10,778	2,772	13,880
CAPTAIN - LIEUTENANT	47,881	12,702	4,060	20,639
1ST LIEUTENANT - LIEUTENANT (JG)	15,905	5,833	2,535	2,134
2ND LIEUTENANT - ENSIGN	12,154	4,546	894	1,769
CHIEF WARRANT OFFICER W-4	1,684	567	182	1
CHIEF WARRANT OFFICER W-3	2,424	519	52	-
CHIEF WARRANT OFFICER W-2	3,612	1,945	517	-
WARRANT OFFICER W-1	488	-	471	-
TOTAL OFFICERS	165,165	47,449	13,587	55,667
E-9	12,414	3,169	1,199	4,309
E-8	33,042	8,199	2,900	8,827
E-7	114,835	28,285	8,171	32,879
E-6	203,214	63,881	12,415	51,518
E-5	316,303	76,877	23,667	98,241
E-4	394,571	95,118	25,096	106,219
E-3	287,496	52,949	43,185	96,744
E-2	164,092	36,727	28,216	31,335
E-1	171,105	43,296	22,406	26,184
TOTAL ENLISTED	1,697,072	408,501	167,255	456,256
REGULAR TOTAL	1,862,237	455,950	180,842	511,923

A/ REGULAR PLUS RETIRED REGULAR OFFICERS ON ACTIVE DUTY.

DEPARTMENT OF DEFENSE
 WASHINGTON HEADQUARTERS SERVICES
 DIRECTORATE FOR INFORMATION
 OPERATIONS AND REPORTS

TABLE P26.05

DEPARTMENT OF DEFENSE
MILITARY PERSONNEL ON ACTIVE DUTY BY GRADE IN WHICH SERVING

RESERVE A/

JULY 31, 1980

RANK/GRADE	ARMY	NAVY	MARINE CORPS	AIR FORCE	TOTAL DOD
GENERAL OF ARMY - FLEET ADMIRAL	-	-	-	-	-
GENERAL - ADMIRAL	1	-	-	-	1
LT GENERAL - VICE ADMIRAL	2	1	1	5	9
MAJ GENERAL - REAR ADMIRAL (U)	2	1	1	2	5
BRIG GENERAL - REAR ADMIRAL (L)	2	1	-	-	5
COLONEL - CAPTAIN	291	151	23	286	751
LIEUTENANT COL - COMMANDER	1,909	461	24	1,176	3,570
MAJOR - LT COMMANDER	6,395	1,452	91	4,553	12,491
CAPTAIN - LIEUTENANT	16,391	4,491	562	14,916	36,360
1ST LIEUTENANT - LIEUTENANT (JG)	7,677	4,127	2,263	8,005	22,072
2ND LIEUTENANT - ENSIGN	8,289	4,567	1,691	13,878	28,415
CHIEF WARRANT OFFICER W-4	440	7	5	-	452
CHIEF WARRANT OFFICER W-3	2,014	2	1	-	2,017
CHIEF WARRANT OFFICER W-2	4,120	19	6	-	4,145
WARRANT OFFICER W-1	2,711	-	2	-	2,713
TOTAL OFFICERS	50,242	15,279	4,659	42,821	113,001
E-9	1	125	4	7	137
E-8	5	350	12	3	370
E-7	13	1,209	39	21	1,282
E-6	24	3,203	26	4	3,257
E-5	32	4,600	272	7	4,911
E-4	463	8,725	10	44	9,242
E-3	1,718	7,905	32	189	9,844
E-2	1,569	11,357	64	5	12,995
E-1	602	13,024	80	199	13,905
TOTAL ENLISTED	4,427	50,498	539	479	55,943
RESERVE TOTAL	54,669	65,777	5,198	43,300	168,944

A/ INCLUDES RESERVE, NATIONAL GUARD, AUS, AND AFUS OFFICERS ON ACTIVE DUTY.

DEPARTMENT OF DEFENSE
WASHINGTON HEADQUARTERS SERVICES
DIRECTORATE FOR INFORMATION
OPERATIONS AND REPORTS

TABLE P27.1

DEPARTMENT OF DEFENSE
SUMMARY OF ENLISTED PERSONNEL PROCUREMENT
FISCAL YEAR 1980

	OCT 1979	NOV 1979	DEC 1979	JAN 1980	FEB 1980	MAR 1980
TOTAL DEPARTMENT OF DEFENSE	52,500	46,109	33,431	53,224	48,466	45,694
INDUCTIONS	-	-	-	-	-	-
FIRST ENLISTMENTS	31,154	26,620	17,681	32,445	28,649	25,512
IMMEDIATE REENLISTMENTS	16,587	15,356	13,635	15,393	15,072	15,267
OTHER REENLISTMENTS	2,140	1,899	1,507	2,500	2,238	2,122
RESERVES TO ACTIVE DUTY A/	2,619	2,234	608	2,886	2,507	2,793
ARMY	26,059	22,055	13,723	26,015	21,669	21,839
INDUCTIONS	-	-	-	-	-	-
FIRST ENLISTMENTS	16,528	13,447	6,260	15,852	13,055	11,265
IMMEDIATE REENLISTMENTS	7,220	6,963	6,483	7,786	7,017	8,545
OTHER REENLISTMENTS	1,496	1,115	675	1,459	1,145	1,070
RESERVES TO ACTIVE DUTY	815	530	305	918	452	959
NAVY	9,997	9,525	6,743	11,630	11,719	10,563
INDUCTIONS	-	-	-	-	-	-
FIRST ENLISTMENTS	5,448	4,912	4,420	6,691	6,209	5,664
IMMEDIATE REENLISTMENTS	2,468	2,491	1,712	2,504	3,011	2,639
OTHER REENLISTMENTS	329	462	394	549	522	517
RESERVES TO ACTIVE DUTY	1,752	1,660	217	1,886	1,977	1,743
MARINE CORPS	4,596	3,897	3,282	4,340	4,340	3,899
INDUCTIONS	-	-	-	-	-	-
FIRST ENLISTMENTS	2,796	2,730	1,869	3,151	3,151	2,624
IMMEDIATE REENLISTMENTS	1,652	995	1,013	878	878	1,003
OTHER REENLISTMENTS	102	132	288	239	239	187
RESERVES TO ACTIVE DUTY	46	40	82	72	72	65
AIR FORCE	11,848	10,632	9,713	11,239	10,738	9,393
INDUCTIONS	-	-	-	-	-	-
FIRST ENLISTMENTS	6,382	5,531	5,132	6,761	6,234	5,959
IMMEDIATE REENLISTMENTS	5,247	4,907	4,427	4,225	4,166	3,080
OTHER REENLISTMENTS	213	190	150	253	332	348
RESERVES TO ACTIVE DUTY	6	4	4	10	6	6

A/ INCLUDES NATIONAL GUARD.

DEPARTMENT OF DEFENSE
WASHINGTON HEADQUARTERS SERVICES
DIRECTORATE FOR INFORMATION
OPERATIONS AND REPORTS

TABLE P27.1

DEPARTMENT OF DEFENSE
SUMMARY OF ENLISTED PERSONNEL PROCUREMENT
FISCAL YEAR 1980

	APR 1980	MAY 1980	JUN 1980	JUL 1980	AUG 1980	SEP 1980
TOTAL DEPARTMENT OF DEFENSE	40,455	44,712	52,940	58,273		
INDUCTIONS	-	-	-	-	-	-
FIRST ENLISTMENTS	20,857	24,843	35,185	38,575		
IMMEDIATE REENLISTMENTS	15,863	15,637	14,466	15,758		
OTHER REENLISTMENTS	2,013	2,285	2,049	2,420		
RESERVES TO ACTIVE DUTY A/	1,722	1,947	1,238	1,520		
ARMY	18,661	19,859	22,372	27,765		
INDUCTIONS	-	-	-	-	-	-
FIRST ENLISTMENTS	9,474	11,191	14,442	19,644		
IMMEDIATE REENLISTMENTS	7,609	7,257	6,675	6,443		
OTHER REENLISTMENTS	1,134	1,224	1,148	1,463		
RESERVES TO ACTIVE DUTY	444	187	107	215		
NAVY	9,013	11,564	10,894	9,916		
INDUCTIONS	-	-	-	-	-	-
FIRST ENLISTMENTS	4,607	6,499	7,255	5,266		
IMMEDIATE REENLISTMENTS	2,693	2,763	2,172	3,198		
OTHER REENLISTMENTS	474	624	451	456		
RESERVES TO ACTIVE DUTY	1,239	1,678	1,016	1,006		
MARINE CORPS	3,112	3,149	7,832	7,296		
INDUCTIONS	-	-	-	-	-	-
FIRST ENLISTMENTS	2,201	2,010	6,321	5,672		
IMMEDIATE REENLISTMENTS	695	821	1,171	1,214		
OTHER REENLISTMENTS	177	237	226	292		
RESERVES TO ACTIVE DUTY	39	81	114	106		
AIR FORCE	9,669	10,140	11,842	13,306		
INDUCTIONS	-	-	-	-	-	-
FIRST ENLISTMENTS	4,575	5,143	7,167	8,003		
IMMEDIATE REENLISTMENTS	4,866	4,796	4,450	4,903		
OTHER REENLISTMENTS	228	200	224	209		
RESERVES TO ACTIVE DUTY	-	1	1	191		

A/ INCLUDES NATIONAL GUARD.

DEPARTMENT OF DEFENSE
WASHINGTON HEADQUARTERS SERVICES
DIRECTORATE FOR INFORMATION
OPERATIONS AND REPORTS

TABLE P27.21

DEPARTMENT OF DEFENSE
ARMY ENLISTED PERSONNEL PROCUREMENT
FISCAL YEAR 1980

	OCT 1979	NOV 1979	DEC 1979	JAN 1980	FEB 1980	MAR 1980
TOTAL	26,059	22,055	13,723	26,015	21,669	21,839
REGULAR ENL. AND REENL. - TOTAL	25,244	21,525	13,416	25,097	21,217	20,880
FIRST ENLISTMENTS	16,528	13,447	6,280	15,852	13,055	11,265
REENLISTMENTS - TOTAL	8,716	8,078	7,158	9,248	8,162	9,615
IMMEDIATE REENLISTMENTS	7,220	6,963	6,483	7,786	7,017	8,545
FORMER REGULAR	7,170	6,895	6,445	7,731	6,971	8,484
FORMER RESERVE & N.G.	50	68	38	55	46	61
FORMER INDUCTEE	-	-	-	-	-	-
REENL. OTHER THAN IMMEDIATE	1,496	1,115	675	1,459	1,145	1,070
WITHIN 2-90 DAYS AFTER SEPARATION	252	169	118	186	130	108
FORMER REGULAR	85	47	28	48	35	30
FORMER RESERVE & N.G.	139	102	83	126	73	60
FORMER INDUCTEE	10	10	4	12	13	16
FORMER OFFICER	18	10	3	-	9	2
OVER 90 DAYS AFTER SEPARATION	1,244	946	557	1,273	1,015	962
INDUCTIONS	-	-	-	-	-	-
RESERVES AND N.G. CALLS	815	530	305	918	452	959

DEPARTMENT OF DEFENSE
WASHINGTON HEADQUARTERS SERVICES
DIRECTORATE FOR INFORMATION
OPERATIONS AND REPORTS

TABLE P27.21

 DEPARTMENT OF DEFENSE
 ARMY ENLISTED PERSONNEL PROCUREMENT
 FISCAL YEAR 1960

	APR 1960	MAY 1960	JUN 1960	JUL 1960	AUG 1960	SEP 1960
TOTAL	16,661	19,859	22,372	27,765		
REGULAR ENL. AND REENL. - TOTAL	18,217	19,672	22,265	27,550		
FIRST ENLISTMENTS	9,474	11,191	14,442	19,644		
REENLISTMENTS - TOTAL	8,743	8,481	7,823	7,906		
IMMEDIATE REENLISTMENTS	7,609	7,257	6,675	6,443		
FORMER REGULAR	7,546	7,160	6,602	6,352		
FORMER RESERVE & N.G.	63	77	73	91		
FORMER INDUCTEE	-	-	-	-		
REENL. OTHER THAN IMMEDIATE	1,134	1,224	1,148	1,463		
WITHIN 2-90 DAYS AFTER SEPARATION	110	130	118	160		
FORMER REGULAR	26	26	28	38		
FORMER RESERVE & N.G.	63	77	78	67		
FORMER INDUCTEE	18	23	12	25		
FORMER OFFICER	3	4	-	-		
OVER 90 DAYS AFTER SEPARATION	1,024	1,094	1,030	1,313		
INDUCTIONS	-	-	-	-		
RESERVES AND N.G. CALLS	444	187	107	215		

 DEPARTMENT OF DEFENSE
 WASHINGTON HEADQUARTERS SERVICES
 DIRECTORATE FOR INFORMATION
 OPERATIONS AND REPORTS

TABLE P27.22

DEPARTMENT OF DEFENSE
NAVY ENLISTED PERSONNEL PROCUREMENT
FISCAL YEAR 1980

	OCT 1979	NOV 1979	DEC 1979	JAN 1980	FEB 1980	MAR 1980
TOTAL	9,997	9,525	6,743	11,630	11,719	10,563
REGULAR ENL. AND REENL. - TOTAL	8,245	7,865	6,526	9,744	9,742	8,820
FIRST ENLISTMENTS	5,448	4,912	4,420	6,691	6,209	5,664
REENLISTMENTS - TOTAL	2,797	2,953	2,106	3,053	3,533	3,156
IMMEDIATE REENLISTMENTS	2,468	2,491	1,712	2,504	3,011	2,639
FORMER REGULAR	2,380	2,406	1,679	2,372	2,932	2,470
FORMER RESERVE	88	85	33	132	79	169
REENL. OTHER THAN IMMEDIATE	329	462	394	549	522	517
WITHIN 2-90 DAYS AFTER SEPARATION	71	94	63	100	86	90
FORMER REGULAR	71	94	63	100	86	90
FORMER RESERVE	-	-	-	-	-	-
OVER 90 DAYS AFTER SEPARATION	258	368	331	449	436	427
INDUCTIONS	-	-	-	-	-	-
RESERVES TO ACTIVE DUTY	1,752	1,660	217	1,886	1,977	1,743
FIRST ENLISTMENTS	252	286	155	272	278	203
REENLISTMENTS	83	82	49	82	89	80
REPORTED TO ACTIVE DUTY	1,417	1,292	13	1,532	1,610	1,460

DEPARTMENT OF DEFENSE
WASHINGTON HEADQUARTERS SERVICES
DIRECTORATE FOR INFORMATION
OPERATIONS AND REPORTS

TABLE P27.22

DEPARTMENT OF DEFENSE
NAVY ENLISTED PERSONNEL PROCUREMENT
FISCAL YEAR 1980

	APR 1980	MAY 1980	JUN 1980	JUL 1980	AUG 1980	SEP 1980
TOTAL	9,013	11,564	10,894	9,916		
REGULAR ENL. AND REENL. - TOTAL	7,774	9,886	9,878	8,910		
FIRST ENLISTMENTS	4,607	6,499	7,255	5,256		
REENLISTMENTS - TOTAL	3,167	3,387	2,623	3,654		
IMMEDIATE REENLISTMENTS	2,693	2,763	2,172	3,198		
FORMER REGULAR	2,571	2,649	2,105	3,108		
FORMER RESERVE	122	114	67	90		
REENL. OTHER THAN IMMEDIATE	474	624	451	456		
WITHIN 2-90 DAYS AFTER SEPARATION	72	76	69	79		
FORMER REGULAR	72	76	69	79		
FORMER RESERVE	-	-	-	-		
OVER 90 DAYS AFTER SEPARATION	402	548	382	377		
INDUCTIONS	-	-	-	-		
RESERVES TO ACTIVE DUTY	1,239	1,678	1,016	1,006		
FIRST ENLISTMENTS	123	214	99	93		
REENLISTMENTS	74	87	52	110		
REPORTED TO ACTIVE DUTY	1,042	1,377	865	803		

DEPARTMENT OF DEFENSE
WASHINGTON HEADQUARTERS SERVICES
DIRECTORATE FOR INFORMATION
OPERATIONS AND REPORTS

TABLE P27.23

DEPARTMENT OF DEFENSE
MARINE CORPS ENLISTED PERSONNEL PROCUREMENT
FISCAL YEAR 1980

	OCT 1979	NOV 1979	DEC 1979	JAN 1980	FEB 1980	MAR 1980
TOTAL	4,596	3,897	3,252	4,340	4,340	3,899
REGULAR ENL. AND REENL. - TOTAL	4,550	3,857	3,170	4,268	4,268	3,814
FIRST ENLISTMENTS	2,796	2,730	1,869	3,151	3,151	2,624
REENLISTMENTS - TOTAL	1,754	1,127	1,301	1,117	1,117	1,190
IMMEDIATE REENLISTMENTS	1,652	995	1,013	878	878	1,003
FORMER REGULAR A/ FORMER RESERVE FORMER INDUCTEE	1,606 46 -	966 29 -	968 45 -	834 44 -	834 44 -	971 32 -
REENL. OTHER THAN IMMEDIATE	102	132	288	239	239	167
WITHIN 2-90 DAYS AFTER SEPARATION	1	1	19	3	3	-
FORMER REGULAR FORMER RESERVE FORMER INDUCTEE	1 - -	1 - -	8 - 0	3 - -	3 - -	- - -
OVER 90 DAYS AFTER SEPARATION B/	101	131	278	236	236	167
INDUCTIONS	-	-	-	-	-	-
RESERVES TO ACTIVE DUTY	46	40	62	72	72	65
FIRST ENLISTMENTS REENLISTMENTS REPORTED TO ACTIVE DUTY	- - 46	- - 40	- - 62	- - 72	- - 72	- - 65

A/ INCLUDES EXTENSIONS FOR WHICH REENLISTMENT BONUS IS PAID.
B/ INCLUDES ENLISTMENTS OF FORMER OFFICERS.

DEPARTMENT OF DEFENSE
WASHINGTON HEADQUARTERS SERVICES
DIRECTORATE FOR INFORMATION
OPERATIONS AND REPORTS

TABLE P27.23

DEPARTMENT OF DEFENSE
MARINE CORPS ENLISTED PERSONNEL PROCUREMENT
FISCAL YEAR 1960

	APR 1960	MAY 1960	JUN 1960	JUL 1960	AUG 1960	SEP 1960
TOTAL	3,112	3,149	7,832	7,286		
REGULAR ENL. AND REENL. - TOTAL	3,073	3,068	7,718	7,178		
FIRST ENLISTMENTS	2,201	2,010	6,321	5,672		
REENLISTMENTS - TOTAL	872	1,058	1,397	1,506		
IMMEDIATE REENLISTMENTS	695	821	1,171	1,214		
FORMER REGULAR A/	671	790	1,123	1,151		
FORMER RESERVE	24	31	48	63		
FORMER INDUCTEE	-	-	-	-		
REENL. OTHER THAN IMMEDIATE	177	237	226	292		
WITHIN 2-90 DAYS AFTER SEPARATION	-	-	-	-		
FORMER REGULAR	-	-	-	-		
FORMER RESERVE	-	-	-	-		
FORMER INDUCTEE	-	-	-	-		
OVER 90 DAYS AFTER SEPARATION B/	177	237	226	292		
INDUCTIONS	-	-	-	-		
RESERVES TO ACTIVE DUTY	39	61	114	108		
FIRST ENLISTMENTS	-	-	-	-		
REENLISTMENTS	-	-	-	-		
REPORTED TO ACTIVE DUTY	39	61	114	108		

A/ INCLUDES EXTENSIONS FOR WHICH REENLISTMENT BONUS IS PAID.

B/ INCLUDES ENLISTMENTS OF FORMER OFFICERS.

DEPARTMENT OF DEFENSE
WASHINGTON HEADQUARTERS SERVICES
DIRECTORATE FOR INFORMATION
OPERATIONS AND REPORTS

TABLE P27.24

DEPARTMENT OF DEFENSE
AIR FORCE ENLISTED PERSONNEL PROCUREMENT
FISCAL YEAR 1980

	OCT 1979	NOV 1979	DEC 1979	JAN 1980	FEB 1980	MAR 1980
TOTAL	11,848	10,632	9,713	11,239	10,738	9,393
REGULAR ENL. AND REENL. - TOTAL	11,842	10,628	9,709	11,229	10,732	9,387
FIRST ENLISTMENTS	6,382	5,531	5,132	6,751	6,234	5,959
REENLISTMENTS - TOTAL	5,460	5,097	4,577	4,478	4,498	3,428
IMMEDIATE REENLISTMENTS	5,247	4,907	4,427	4,225	4,166	3,080
FORMER REGULAR FORMER RESERVE & N.G.	5,247	4,907	4,428	4,229	4,165	3,079
REENL. OTHER THAN IMMEDIATE	213	190	150	253	332	348
WITHIN 2-90 DAYS AFTER SEPARATION	-	-	-	-	-	-
FORMER REGULAR FORMER RESERVE & N.G.	-	-	-	-	-	-
OVER 90 DAYS AFTER SEPARATION A/	213	190	150	253	332	348
INDUCTIONS	-	-	-	-	-	-
RESERVES & N.G. TO ACTIVE DUTY	6	4	4	10	6	6

A/ INCLUDES ENLISTMENTS OF FORMER COMMISSIONED AND WARRANT OFFICERS.

DEPARTMENT OF DEFENSE
WASHINGTON HEADQUARTERS SERVICES
DIRECTORATE FOR INFORMATION
OPERATIONS AND REPORTS

TABLE P27.24

DEPARTMENT OF DEFENSE
AIR FORCE ENLISTED PERSONNEL PROCUREMENT
FISCAL YEAR 1980

	APR 1980	MAY 1980	JUN 1980	JUL 1980	AUG 1980	SEP 1980
TOTAL	9,669	10,140	11,842	13,306		
REGULAR ENL. AND REENL. - TOTAL	9,669	10,139	11,841	13,115		
FIRST ENLISTMENTS	4,575	5,143	7,167	8,003		
REENLISTMENTS - TOTAL	5,094	4,996	4,674	5,112		
IMMEDIATE REENLISTMENTS	4,866	4,796	4,450	4,903		
FORMER REGULAR FORMER RESERVE & N.G.	4,864	4,794	4,450	4,903		
	2	2	-	-		
REENL. OTHER THAN IMMEDIATE	228	200	224	209		
WITHIN 2-90 DAYS AFTER SEPARATION	-	-	-	-		
FORMER REGULAR FORMER RESERVE & N.G.	-	-	-	-		
OVER 90 DAYS AFTER SEPARATION A/	228	200	224	209		
INDUCTIONS	-	-	-	-		
RESERVES & N.G. TO ACTIVE DUTY	-	1	1	191		

A/ INCLUDES ENLISTMENTS OF FORMER COMMISSIONED AND WARRANT OFFICERS.

DEPARTMENT OF DEFENSE
WASHINGTON HEADQUARTERS SERVICES
DIRECTORATE FOR INFORMATION
OPERATIONS AND REPORTS

TABLE R11.0

DEPARTMENT OF DEFENSE
RESERVE COMPONENT STRENGTH SUMMARY

JULY 31, 1980

RESERVES BY RESERVE CATEGORY		
TYPE OF DUTY	TOTAL	ENLISTED A/
TOTAL	2,144,603	1,476,469
READY RESERVE NOT ON ACTIVE DUTY	1,239,213	1,053,599
ACTIVE STATUS	1,234,221	1,049,255
INACTIVE STATUS B/	4,992	4,344
STANDBY RESERVE ON ACTIVE STATUS	69,002	10,617
INACTIVE STATUS	25,531	6,614
	63,471	2,003
RETIRED - RETIRED STATUS	616,368	414,273

A/ INCLUDES OFFICER CANDIDATES.

B/ INACTIVE NATIONAL GUARD AND REP'S IN NON-PAY STATUS.

RESERVES IN "PAID STATUS"		
PAY GROUP	TOTAL	ENLISTED
SELECTED RESERVE	629,636	713,642
DRILL PAY STATUS	791,263	675,470
INITIAL ACTIVE DUTY TRAINING	38,373	36,372
		1

DEPARTMENT OF DEFENSE
WASHINGTON HEADQUARTERS SERVICES
DIRECTORATE FOR INFORMATION
OPERATIONS AND REPORTS

TABLE R12.0
 DEPARTMENT OF DEFENSE
 RESERVE STRENGTH - OFFICER AND ENLISTED
 NOT ON ACTIVE DUTY

DATE	TOTAL	OFFICERS	ENLISTED A/
31 OCT 1979	2,119,750	663,212	1,456,538
30 NOV 1979	2,126,363	664,288	1,462,075
31 DEC 1979	2,130,130	663,133	1,466,997
31 JAN 1980	2,129,646	662,563	1,467,083
29 FEB 1980	2,133,456	663,894	1,469,562
31 MAR 1980	2,132,165	664,441	1,467,724
30 APR 1980	2,130,393	663,835	1,466,558
31 MAY 1980	2,127,182	664,233	1,462,949
30 JUN 1980	2,132,835	663,535	1,469,300
31 JUL 1980	2,144,603	666,114	1,478,489

A/ INCLUDES OFFICER CANDIDATES.

DEPARTMENT OF DEFENSE
 WASHINGTON HEADQUARTERS SERVICES
 DIRECTORATE FOR INFORMATION
 OPERATIONS AND REPORTS

TABLE R13.0

DEPARTMENT OF DEFENSE
 READY RESERVE AND ACTIVE DUTY STRENGTH COMPARED TO STATUTORY LIMITATION

JULY 31, 1960

	STATUTORY READY RESERVE LIMITATION A/	TOTAL	ON ACTIVE DUTY	NOT ON ACTIVE DUTY
DIFFERENCE	2,900,000	1,470,037		
READY RESERVE AND ACTIVE DUTY STRENGTH	1,429,963	1,429,963	170,095	1,259,868
COAST GUARD RESERVE	21,806	21,806	1,151	20,655
DOD RESERVE	1,408,157	1,408,157	168,944	1,239,213
ARMY NATIONAL GUARD B/ ARMY RESERVE	826,387 366,791 459,596		54,669 1,597 53,072	771,718 365,194 406,524
NAVAL RESERVE	244,571		65,777	178,794
MARINE CORPS RESERVE	95,362		5,198	90,164
AIR FORCE AIR NATIONAL GUARD C/ AIR FORCE RESERVE	241,837 95,544 146,293		43,300 289 43,011	198,537 95,255 103,282

A/ SECTION 205(B), ARMED FORCES RESERVE ACT OF 1952, AS AMENDED.
 B/ INCLUDES "INACTIVE NATIONAL GUARD" NUMBERING 4,992 AND REP'S NUMBERING 1,290.
 C/ INCLUDES REP'S IN A NON-PAY STATUS NUMBERING 272.

DEPARTMENT OF DEFENSE
 WASHINGTON HEADQUARTERS SERVICES
 DIRECTORATE FOR INFORMATION
 OPERATIONS AND REPORTS

TABLE R14.0
 DEPARTMENT OF DEFENSE
 RESERVE COMPONENT PERSONNEL BY RESERVE CATEGORY
 NOT ON ACTIVE DUTY

DATE	TOTAL	READY	STANDBY	RETIRED
31 OCT 1979	2,119,750	1,213,769	103,160	802,821
30 NOV 1979	2,126,363	1,220,242	101,822	804,299
31 DEC 1979	2,130,130	1,223,844	101,554	804,732
31 JAN 1980	2,129,646	1,223,082	99,484	807,080
28 FEB 1980	2,133,455	1,227,561	97,545	808,350
31 MAR 1980	2,132,165	1,226,255	96,008	809,904
30 APR 1980	2,130,393	1,226,823	93,935	809,635
31 MAY 1980	2,127,182	1,224,745	91,885	810,552
30 JUN 1980	2,132,835	1,229,876	90,610	812,349
31 JUL 1980	2,144,603	1,239,213	89,002	816,388

TABLE R14.0
 DEPARTMENT OF DEFENSE
 RESERVE COMPONENT PERSONNEL BY RESERVE CATEGORY
 NOT ON ACTIVE DUTY

OFFICERS

DATE	TOTAL	READY	STANDBY	RETIRED
31 OCT 1979	663,212	182,299	84,561	396,352
30 NOV 1979	664,288	183,619	83,693	396,776
31 DEC 1979	663,133	182,559	83,665	396,909
31 JAN 1980	662,563	182,745	82,281	397,537
28 FEB 1980	663,894	184,484	81,132	398,278
31 MAR 1980	664,441	184,584	81,008	398,849
30 APR 1980	663,635	185,154	80,500	398,181
31 MAY 1980	664,233	185,141	79,718	399,374
30 JUN 1980	663,535	185,450	79,264	398,821
31 JUL 1980	666,114	185,614	78,385	402,115

TABLE R14.0

DEPARTMENT OF DEFENSE
RESERVE COMPONENT PERSONNEL BY RESERVE CATEGORY
NOT ON ACTIVE DUTY

ENLISTED A/

DATE	TOTAL	READY	STANDBY	RETIRED
31 OCT 1979	1,456,538	1,031,470	18,599	406,469
30 NOV 1979	1,462,075	1,036,423	18,129	407,523
31 DEC 1979	1,466,997	1,041,285	17,889	407,823
31 JAN 1980	1,467,083	1,040,337	17,203	409,543
28 FEB 1980	1,469,562	1,043,077	16,413	410,072
31 MAR 1980	1,467,724	1,041,671	14,998	411,055
30 APR 1980	1,466,558	1,041,669	13,435	411,454
31 MAY 1980	1,462,949	1,039,604	12,167	411,178
30 JUN 1980	1,469,300	1,044,426	11,346	413,528
31 JUL 1980	1,478,489	1,053,599	10,617	414,273

A/ INCLUDES OFFICER CANDIDATES.

TABLE R18.0

DEPARTMENT OF DEFENSE
SELECTED RESERVE

DATE	TOTAL	DRILL PAY STATUS	INITIAL ACTIVE DUTY TRAINING
31 OCT 1979	805,869	778,318	27,551
30 NOV 1979	808,630	781,895	26,735
31 DEC 1979	810,860	787,399	23,461
31 JAN 1980	812,859	789,438	23,421
28 FEB 1980	817,152	793,025	24,127
31 MAR 1980	818,348	793,245	25,103
30 APR 1980	819,429	793,787	25,642
31 MAY 1980	821,409	795,057	26,352
30 JUN 1980	825,622	790,967	34,655
31 JUL 1980	829,636	791,263	38,373

DEPARTMENT OF DEFENSE
WASHINGTON HEADQUARTERS SERVICES
DIRECTORATE FOR INFORMATION
OPERATIONS AND REPORTS

TABLE R21.0
 DEPARTMENT OF DEFENSE
 RESERVE PERSONNEL ON ACTIVE DUTY BY COMPONENT
 JULY 31, 1980

COMPONENT/PERSONNEL	TOTAL	OFFICER	ENLISTED A/
TOTAL DEPARTMENT OF DEFENSE	168,944	113,001	55,943
ARMY - TOTAL	54,669	50,242	4,427
NATIONAL GUARD OF THE U. S.	1,597	441	1,156
ARMY RESERVE	53,072	49,801	3,271
NAVAL RESERVE	65,777	15,279	50,498
MARINE CORPS RESERVE	5,198	4,659	539
AIR FORCE - TOTAL	43,300	42,821	479
AIR NATIONAL GUARD OF THE U. S.	289	171	118
AIR FORCE RESERVE	43,011	42,650	361

A/ INCLUDES OFFICER CANDIDATES.

DEPARTMENT OF DEFENSE
 WASHINGTON HEADQUARTERS SERVICES
 DIRECTORATE FOR INFORMATION
 OPERATIONS AND REPORTS

TABLE R22.0

DEPARTMENT OF DEFENSE
RESERVE STRENGTH ON ACTIVE DUTY A/

DATE	TOTAL DOD	ARMY				NAVAL RESERVE	MARINE CORPS RESERVE	AIR FORCE	
		NATIONAL GUARD	ARMY RESERVE	AIR NATIONAL GUARD	AIR FORCE RESERVE				
31 OCT 1979	165,200	1,790	52,850	64,014	5,119	299	41,128		
30 NOV 1979	165,287	1,792	52,495	64,179	5,076	301	41,444		
31 DEC 1979	164,506	1,700	52,196	64,423	5,025	296	40,866		
31 JAN 1980	165,369	1,807	52,963	64,773	4,959	306	40,561		
28 FEB 1980	161,285	588	49,150	65,711	4,857	297	40,682		
31 MAR 1980	167,030	1,846	52,815	66,039	4,957	299	41,074		
30 APR 1980	167,174	1,657	52,545	66,138	4,834	294	41,706		
31 MAY 1980	167,865	1,666	52,646	66,253	4,854	294	42,172		
30 JUN 1980	168,114	1,576	52,772	65,923	5,121	290	42,432		
31 JUL 1980	168,944	1,597	53,072	65,777	5,198	289	43,011		

A/ CONTINUOUS OR EXTENDED ACTIVE DUTY.
EXCLUDES ACTIVE DUTY FOR RESERVE TRAINING.

DEPARTMENT OF DEFENSE
WASHINGTON HEADQUARTERS SERVICES
DIRECTORATE FOR INFORMATION
OPERATIONS AND REPORTS

TABLE R23.0

DEPARTMENT OF DEFENSE
RESERVE PERSONNEL BY COMPONENT AND CATEGORY
NOT ON ACTIVE DUTY

JULY 31, 1980

COMPONENT/ PERSONNEL	TOTAL	NAT'L GUARD OF THE U. S. A/			ARMY RESERVE	NAVAL RESERVE	MARINE CORPS RESERVE	AIR B/	
		NAT'L GUARD OF THE U. S.		AIR FORCE RESERVE					
TOTAL	2,144,603	365,194	838,023	331,079	100,483	95,255	414,569		
OFFICER	666,114	37,381	273,352	162,383	14,044	11,699	167,255		
ENLISTED C/	1,478,489	327,813	564,671	168,696	86,439	83,556	247,314		
READY RESERVE	1,239,213	365,194	406,524	178,794	90,164	95,255	103,282		
OFFICER	185,614	37,381	73,426	34,651	6,311	11,699	22,146		
ENLISTED C/	1,053,599	327,813	333,098	144,143	83,853	83,556	81,136		
STANDBY RESERVE	89,002	-	20,939	23,996	2,065	-	42,002		
OFFICER	78,385	-	19,575	20,373	1,827	-	36,610		
ENLISTED	10,617	-	1,364	3,623	238	-	5,392		
ACTIVE STATUS	25,531	-	9,967	3,547	1,978	-	10,039		
OFFICER	16,917	-	8,603	68	1,740	-	6,506		
ENLISTED	8,614	-	1,364	3,479	238	-	3,533		
INACTIVE STATUS	63,471	-	10,972	20,449	87	-	31,963		
OFFICER	61,468	-	10,972	20,305	87	-	30,104		
ENLISTED	2,003	-	-	144	-	-	1,859		
RETIRED RESERVE	816,388	-	410,560	128,289	8,254	-	269,285		
OFFICER	402,115	-	180,351	107,359	5,906	-	108,499		
ENLISTED	414,273	-	230,209	20,930	2,348	-	160,786		

A/ INCLUDES "INACTIVE NATIONAL GUARD" NUMBERING 4,992 TOTAL, 648 OFFICERS, 4,344 ENLISTED
AND RESERVE ENLISTMENT PROGRAM (REPS) IN A NON-PAY STATUS NUMBERING 1,290.
B/ INCLUDES REPS IN A NON-PAY STATUS NUMBERING 272.
C/ INCLUDES OFFICER CANDIDATES.

DEPARTMENT OF DEFENSE
WASHINGTON HEADQUARTERS SERVICES
DIRECTORATE FOR INFORMATION
OPERATIONS AND REPORTS

TABLE R24.0

DEPARTMENT OF DEFENSE
RESERVE STRENGTH NOT ON ACTIVE DUTY A/

DATE	TOTAL DOD	ARMY				AIR FORCE	
		B/ NATIONAL GUARD	ARMY RESERVE	NAVAL RESERVE	MARINE CORPS RESERVE	AIR NATIONAL GUARD	AIR FORCE RESERVE
31 OCT 1979	2,119,750	350,631	830,256	328,822	100,732	93,650	415,659
30 NOV 1979	2,126,363	351,959	831,425	331,478	102,232	93,474	415,795
31 DEC 1979	2,130,130	353,553	833,887	333,015	99,881	93,598	416,196
31 JAN 1980	2,129,646	354,014	833,203	333,036	99,317	93,798	416,278
28 FEB 1980	2,133,456	356,567	833,047	334,155	99,039	93,955	416,693
31 MAR 1980	2,132,165	358,056	831,281	333,175	98,180	94,304	417,169
30 APR 1980	2,130,393	358,648	832,278	331,589	97,753	94,524	415,601
31 MAY 1980	2,127,182	360,645	832,609	329,700	94,440	94,657	415,131
30 JUN 1980	2,132,835	363,048	832,863	330,310	96,826	94,743	415,045
31 JUL 1980	2,144,603	365,194	838,023	331,079	100,483	95,255	414,569

A/ INCLUDES RESERVES ON ACTIVE DUTY
FOR RESERVE TRAINING PURPOSES.
B/ INCLUDES "INACTIVE" NATIONAL GUARD.

DEPARTMENT OF DEFENSE
WASHINGTON HEADQUARTERS SERVICES
DIRECTORATE FOR INFORMATION
OPERATIONS AND REPORTS

TABLE R26.5
DEPARTMENT OF DEFENSE
SELECTED RESERVE DRILL PAY STRENGTH

JULY 31, 1980

COMPONENT/ PERSONNEL	TOTAL	DRILL PAY STATUS A/ B/	INITIAL ACTIVE DUTY TRAINING B/
TOTAL DOD	829,636	791,263	38,373
OFFICERS	115,794	115,793	1
ENLISTED	713,842	675,470	38,372
ARMY NATIONAL GUARD	358,912	337,436	21,476
OFFICERS	36,733	36,733	-
ENLISTED	322,179	300,703	21,476
ARMY RESERVE	198,072	189,670	8,402
OFFICERS	35,510	35,510	-
ENLISTED	162,562	154,160	8,402
NAVAL RESERVE	85,359	84,580	779
OFFICERS	16,618	16,618	-
ENLISTED	68,741	67,962	779
MARINE CORPS RESERVE	34,533	30,117	4,416
OFFICERS	2,409	2,409	-
ENLISTED	32,124	27,708	4,416
AIR NATIONAL GUARD	94,983	92,598	2,385
OFFICERS	11,699	11,699	-
ENLISTED	83,284	80,899	2,385
AIR FORCE RESERVE	57,777	56,862	915
OFFICERS	12,825	12,824	1
ENLISTED	44,952	44,038	914

A/ INCLUDES PAY GROUPS A, B, C, M, P, T, G.
B/ INCLUDES PAY GROUPS F AND U.

DEPARTMENT OF DEFENSE
WASHINGTON HEADQUARTERS SERVICES
DIRECTORATE FOR INFORMATION
OPERATIONS AND REPORTS

