

AD-A152 912

MILITARY MANPOWER STATISTICS, AUGUST, FY-80. (U)
WASHINGTON HEADQUARTERS SERVICE (DOD) DIR FOR INFO
OP & RPTS. AUG 80. DIOR/M03-80/11

174

UNCLASSIFIED

F/G 5/9

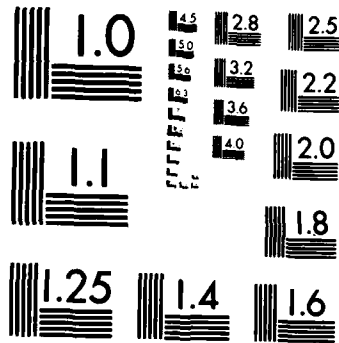
N/L

1 OF 1
AD-A152 912

END
FILMED
11 04 85

1 OF 1

AD-A152 912



MICROCOPY RESOLUTION TEST CHART
NATIONAL BUREAU OF STANDARDS-1963-A

**THIS REPORT IS UNCLASSIFIED AND
ITS DISTRIBUTION IS UNLIMITED**

MILITARY MANPOWER STATISTICS

as of



4
3
19
28
15

DEPARTMENT OF DEFENSE
WASHINGTON HEADQUARTERS SERVICES
DIRECTORATE FOR INFORMATION
OPERATIONS AND REPORTS

FOREWORD

MILITARY MANPOWER STATISTICS (MMS) is a monthly publication prepared by the Washington Headquarters Services, Directorate for Information Operations and Reports (WHS/DIOR) of the Office of the Secretary of Defense.

MMS presents audited statistical data pertaining to active duty military, reserve components, and retired military personnel of the Department of Defense. The publication is generated from a computerized data base developed and maintained by the Manpower Management Information Division of WHS/DIOR.

Requests for additional copies and changes in distribution should be addressed to the Director, Washington Headquarters Services, Room 3E843, The Pentagon, Washington, DC 20301.

TABLE OF CONTENTS

<u>Number</u>	<u>Title</u>
Table P10	Military/Civilian Personnel
Table P11	Department of Defense Manpower Comparison
Table P22.1	Total Active Duty Military Personnel by Service
Table P23.1	Active Duty Officer Personnel and Percent of Total Military Personnel by Service
Table P23.3	Total Active Duty Military Personnel by Type
Table P23.4	Army Active Duty Military Personnel by Type
Table P23.5	Navy Active Duty Military Personnel by Type
Table P23.6	Marine Corps Active Duty Military Personnel by Type
Table P23.7	Air Force Active Duty Military Personnel by Type
Table P23.41	Army Active Duty Military Personnel
Table P23.51	Navy Active Duty Military Personnel
Table P23.61	Marine Corps Active Duty Military Personnel
Table P23.71	Air Force Active Duty Military Personnel
Table P25.6	Women Military Personnel on Active Duty Officers and Enlisted by Service
Table P26.0	Military Personnel on Active Duty by Grade in Which Serving
Table P26.04	Military Personnel on Active Duty by Grade in Which Serving - Regular
Table P26.05	Military Personnel on Active Duty by Grade in Which Serving - Reserve

Number

Title

Table P27.1	Summary of Enlisted Personnel Procurement
Table P27.21	Army Enlisted Personnel Procurement
Table P27.22	Navy Enlisted Personnel Procurement
Table P27.23	Marine Corps Enlisted Personnel Procurement
Table P27.24	Air Force Enlisted Personnel Procurement
Table R11.0	Reserve Component Strength Summary
Table R12.0	Reserve Strength - Officer and Enlisted Not on Active Duty
Table R13.0	Ready Reserve and Active Duty Strength Compared to Statutory Limitation
Table R14.0	Reserve Component Personnel by Reserve Category Not on Active Duty - Total
Table R14.0	Reserve Component Personnel by Reserve Category Not on Active Duty - Officers
Table R14.0	Reserve Component Personnel by Reserve Category Not on Active Duty - Enlisted
Table R18.0	Selected Reserve
Table R21.0	Reserve Personnel on Active Duty by Component
Table R22.0	Reserve Strength on Active Duty
Table R23.0	Reserve Personnel by Component and Category Not on Active Duty
Table R24.0	Reserve Strength Not on Active Duty
Table R26.5	Selected Reserve Drill Pay Strength

TABLE P10
DEPARTMENT OF DEFENSE
MILITARY/CIVILIAN PERSONNEL

	TOTAL DOD	ARMY	NAVY	MARINE CORPS	AIR FORCE
1. ACTIVE DUTY MILITARY AS OF 31 AUG 1980					
OFFICER ENLISTED ACADEMY CADETS	278,009 1,758,686 12,137	98,771 671,456 4,380	62,727 461,268 3,301	18,336 169,311 -	98,175 456,651 4,456
TOTAL ACTIVE DUTY MILITARY	2,048,832	774,607	527,296	187,647	559,282
2. GUARD AND RESERVES AS OF 31 AUG 1980					
NATIONAL GUARD IN PAID STATUS	464,267 457,212	368,411 361,658	- -	- -	95,856 95,554
RESERVES IN PAID STATUS	1,691,910 378,362	841,136 199,936	332,673 85,768	101,839 34,742	416,262 57,916
TOTAL GUARD AND RESERVES IN PAID STATUS	2,156,177 835,574	1,209,547 561,594	332,673 85,768	101,839 34,742	512,118 153,470
3. OFFICER TRAINING IN COLLEGES A/ AS OF OCTOBER 1979					
	93,295	65,186	7,633	-	20,476
4. CIVILIAN PERSONNEL - MILITARY AND CIVIL FUNCTIONS B/					
	TOTAL DOD	ARMY	C/ NAVY	AIR FORCE	OTHER D/ DEFENSE AGENCIES
AS OF 31 AUG 1980	972,840 74,275	352,651 48,576	312,467 10,694	232,112 13,278	75,610 1,727
TOTAL CIVILIAN PERSONNEL	1,047,115	401,227	323,161	245,390	77,337

A/ EXCLUDES 166,212 IN JUNIOR DIVISION, MILITARY SCHOOLS AND NATIONAL DEFENSE CADETS CORPS.
 B/ INCLUDES CIVIL FUNCTIONS EMPLOYMENT OF 36,586 ARMY AND AIR FORCE, ALSO INCLUDES DISADVANTAGED YOUTH EMPLOYEES.
 C/ INCLUDES MARINE CORPS PERSONNEL.
 D/ INCLUDES OSD/JCS.

DEPARTMENT OF DEFENSE
WASHINGTON HEADQUARTERS SERVICES
DIRECTORATE FOR INFORMATION
OPERATIONS AND REPORTS

TABLE P22.1

DEPARTMENT OF DEFENSE
TOTAL ACTIVE DUTY MILITARY PERSONNEL BY SERVICE

DATE	TOTAL DOD	ARMY	NAVY	MARINE CORPS	AIR FORCE
OCT 31, 1979	2,029,564	763,922	521,887	184,539	559,216
NOV 30, 1979	2,029,197	765,602	521,337	183,796	558,462
DEC 31, 1979	2,020,240	759,620	521,857	181,902	556,861
JAN 31, 1980	2,028,631	765,916	523,179	182,020	557,516
FEB 28, 1980	2,032,406	766,680	525,485	182,358	557,883
MAR 31, 1980	2,033,067	766,819	525,787	182,328	558,133
APR 30, 1980	2,028,067	764,251	525,559	181,322	556,935
MAY 31, 1980	2,031,394	764,874	529,078	181,132	556,310
JUN 30, 1980	2,036,092	765,506	527,427	184,551	558,608
JUL 31, 1980	2,043,526	772,670	525,044	186,040	559,772
AUG 31, 1980	2,048,832	774,607	527,296	187,647	559,282

DEPARTMENT OF DEFENSE
WASHINGTON HEADQUARTERS SERVICES
DIRECTORATE FOR INFORMATION
OPERATIONS AND REPORTS

TABLE P23.1

DEPARTMENT OF DEFENSE
ACTIVE DUTY OFFICER PERSONNEL AND PERCENT OF TOTAL MILITARY PERSONNEL, BY SERVICE

DATE	TOTAL DOD		ARMY		NAVY		MARINE CORP'S		AIR FORCE	
	NUMBER	%	NUMBER	%	NUMBER	%	NUMBER	%	NUMBER	%
OCT 31, 1979	272,799	13.4	96,864	12.7	62,099	11.9	18,162	9.8	95,674	17.1
NOV 30, 1979	272,796	13.4	96,388	12.6	62,159	11.9	18,060	9.8	96,189	17.2
DEC 31, 1979	272,618	13.5	96,338	12.7	61,991	11.9	18,103	10.0	96,186	17.3
JAN 31, 1980	273,149	13.5	96,670	12.6	61,989	11.8	18,011	9.9	96,479	17.3
FEB 28, 1980	273,009	13.4	96,320	12.6	61,999	11.8	18,169	10.0	96,521	17.3
MAR 31, 1980	273,173	13.4	96,313	12.6	62,070	11.8	18,125	9.9	96,665	17.3
APR 30, 1980	273,806	13.5	96,092	12.6	62,529	11.9	18,082	10.0	97,103	17.4
MAY 31, 1980	277,866	13.7	97,780	12.8	63,630	12.0	18,199	10.0	98,257	17.7
JUN 30, 1980	278,543	13.7	98,260	12.8	63,469	12.0	18,468	10.0	98,346	17.6
JUL 31, 1980	278,166	13.6	98,704	12.8	62,728	11.9	18,246	9.8	98,488	17.6
AUG 31, 1980	278,009	13.6	98,771	12.8	62,727	11.9	18,336	9.8	98,175	17.6

DEPARTMENT OF DEFENSE
WASHINGTON HEADQUARTERS SERVICES
DIRECTORATE FOR INFORMATION
OPERATIONS AND REPORTS

TABLE P23.3

DEPARTMENT OF DEFENSE
TOTAL ACTIVE DUTY MILITARY PERSONNEL BY TYPE

DATE	OFFICERS	ENLISTED	A/ OFFICER CANDIDATES	TOTAL
OCT 31, 1979	272,799	1,743,775	12,990	2,029,564
NOV 30, 1979	272,796	1,743,472	12,929	2,029,197
DEC 31, 1979	272,618	1,734,707	12,915	2,020,240
JAN 31, 1980	273,149	1,742,745	12,737	2,028,631
FEB 28, 1980	273,009	1,746,703	12,694	2,032,406
MAR 31, 1980	273,173	1,747,346	12,548	2,033,067
APR 30, 1980	273,806	1,741,789	12,472	2,028,067
MAY 31, 1980	277,866	1,742,972	10,556	2,031,394
JUN 30, 1980	278,543	1,746,468	11,081	2,036,092
JUL 31, 1980	278,166	1,753,015	12,345	2,043,526
AUG 31, 1980	278,009	1,758,686	12,137	2,048,832

A/ CONSISTS OF THE FOLLOWING:
FOR ARMY - CADETS, U. S. MILITARY ACADEMY
FOR NAVY - MIDSHIPMEN, U. S. NAVAL ACADEMY
FOR AIR FORCE - CADETS, U. S. AIR FORCE ACADEMY

DEPARTMENT OF DEFENSE
WASHINGTON HEADQUARTERS SERVICES
DIRECTORATE FOR INFORMATION
OPERATIONS AND REPORTS

TABLE P23.4

DEPARTMENT OF DEFENSE
ARMY ACTIVE DUTY MILITARY PERSONNEL BY TYPE

DATE	OFFICERS	ENLISTED	CADETS U.S. MILITARY ACADEMY	TOTAL
OCT 31, 1979	96,864	662,820	4,238	763,922
NOV 30, 1979	96,388	665,009	4,205	765,602
DEC 31, 1979	96,338	659,109	4,173	759,620
JAN 31, 1980	96,670	665,093	4,153	765,916
FEB 28, 1980	96,320	666,220	4,140	766,680
MAR 31, 1980	96,313	666,426	4,080	766,819
APR 30, 1980	96,092	664,110	4,049	764,251
MAY 31, 1980	97,780	663,962	3,132	764,874
JUN 30, 1980	98,260	664,130	3,116	765,506
JUL 31, 1980	98,704	669,487	4,479	772,670
AUG 31, 1980	98,771	671,456	4,380	774,607

DEPARTMENT OF DEFENSE
WASHINGTON HEADQUARTERS SERVICES
DIRECTORATE FOR INFORMATION
OPERATIONS AND REPORTS

TABLE P23.5

DEPARTMENT OF DEFENSE
NAVY ACTIVE DUTY MILITARY PERSONNEL BY TYPE

DATE	OFFICERS	ENLISTED	MIDSHIPMEN U. S. NAVAL ACADEMY	TOTAL
OCT 31, 1979	62,099	455,366	4,422	521,887
NOV 30, 1979	62,159	454,768	4,410	521,337
DEC 31, 1979	61,991	455,390	4,476	521,857
JAN 31, 1980	61,989	456,746	4,444	523,179
FEB 28, 1980	61,999	459,035	4,451	525,485
MAR 31, 1980	62,070	459,327	4,390	525,787
APR 30, 1980	62,529	458,665	4,365	525,559
MAY 31, 1980	63,630	461,084	4,364	529,078
JUN 30, 1980	63,469	460,587	3,371	527,427
JUL 31, 1980	62,728	458,999	3,317	525,044
AUG 31, 1980	62,727	461,268	3,301	527,296

DEPARTMENT OF DEFENSE
WASHINGTON HEADQUARTERS SERVICES
DIRECTORATE FOR INFORMATION
OPERATIONS AND REPORTS

TABLE P23.6
 DEPARTMENT OF DEFENSE
 MARINE CORPS ACTIVE DUTY MILITARY PERSONNEL BY TYPE

DATE	OFFICERS	ENLISTED	TOTAL
OCT 31, 1979	18,162	166,377	184,539
NOV 30, 1979	18,060	165,736	183,796
DEC 31, 1979	18,103	163,799	181,902
JAN 31, 1980	18,011	164,009	182,020
FEB 28, 1980	18,169	164,189	182,358
MAR 31, 1980	18,125	164,203	182,328
APR 30, 1980	18,082	163,240	181,322
MAY 31, 1980	18,199	162,933	181,132
JUN 30, 1980	18,468	166,083	184,551
JUL 31, 1980	18,246	167,794	186,040
AUG 31, 1980	18,336	169,311	187,647

DEPARTMENT OF DEFENSE
 WASHINGTON HEADQUARTERS SERVICES
 DIRECTORATE FOR INFORMATION
 OPERATIONS AND REPORTS

TABLE P23.7

DEPARTMENT OF DEFENSE
AIR FORCE ACTIVE DUTY MILITARY PERSONNEL BY TYPE

DATE	OFFICERS	ENLISTED	CADETS		TOTAL
			U.S.A.F.	ACADEMY	
OCT 31, 1979	95,674	459,212	4,330		559,216
NOV 30, 1979	96,169	457,959	4,314		558,462
DEC 31, 1979	96,186	456,409	4,266		556,861
JAN 31, 1980	96,479	456,897	4,140		557,516
FEB 28, 1980	96,521	457,259	4,103		557,883
MAR 31, 1980	96,665	457,390	4,078		558,133
APR 30, 1980	97,103	455,774	4,058		556,935
MAY 31, 1980	98,257	454,993	3,060		556,310
JUN 30, 1980	98,346	455,668	4,594		558,608
JUL 31, 1980	98,488	456,735	4,549		559,772
AUG 31, 1980	98,175	456,651	4,456		559,282

DEPARTMENT OF DEFENSE
WASHINGTON HEADQUARTERS SERVICES
DIRECTORATE FOR INFORMATION
OPERATIONS AND REPORTS

TABLE P23.41

DEPARTMENT OF DEFENSE
ARMY ACTIVE DUTY MILITARY PERSONNEL

REPORTED STRENGTH, AND ADJUSTMENTS TO REPORTED STRENGTH TO DERIVE "DIRECT PROGRAM STRENGTH" CHARGEABLE TO
APPROPRIATION "MILITARY PERSONNEL, ARMY"

DATE	REPORTED STRENGTH	A/ (LESS) EXCLUDABLES	TOTAL PROGRAM STRENGTH	(LESS) REIMBURSABLES	ENL	OFF	ENL	TOTAL	OFFICER	ENLISTED	CADETS USMA
31 OCT 1979	763,922	495	763,424	391	154	391	154	762,879	95,978	662,663	4,238
30 NOV 1979	765,602	502	765,097	369	157	369	157	764,551	95,497	664,849	4,205
31 DEC 1979	759,620	500	759,117	388	156	388	156	758,573	95,450	658,950	4,173
31 JAN 1980	765,916	513	765,401	401	160	401	160	764,840	95,756	664,931	4,153
28 FEB 1980	766,680	518	766,159	402	158	402	158	765,599	95,400	666,059	4,140
31 MAR 1980	766,819	516	766,301	403	150	403	150	765,748	95,394	666,274	4,080
30 APR 1980	764,251	514	763,735	402	149	402	149	763,184	95,176	663,959	4,049
31 MAY 1980	764,874	508	764,364	408	155	408	155	763,801	96,864	663,805	3,132
30 JUN 1980	765,506	509	764,996	572	156	572	156	764,268	97,179	663,973	3,116
31 JUL 1980	772,670	503	772,165	566	157	566	157	771,442	97,635	669,328	4,479
31 AUG 1980	774,607	491	774,115	549	148	549	148	773,418	97,731	671,307	4,380

A/ ACTIVE DUTY PERSONNEL PAID BY AN APPROPRIATION OTHER THAN MILITARY PERSONNEL, ARMY, AND EXCLUDED FROM THE END STRENGTH OF THE ARMY. COMPRISED OF CIVIL WORKS PERSONNEL, AND USAR AND ARNG PERSONNEL ON STATUTORY TOURS.

DEPARTMENT OF DEFENSE
WASHINGTON HEADQUARTERS SERVICES
DIRECTORATE FOR INFORMATION
OPERATIONS AND REPORTS

TABLE P23 51

DEPARTMENT OF DEFENSE
NAVY ACTIVE DUTY MILITARY PERSONNEL

REPORTED STRENGTH, AND ADJUSTMENTS TO REPORTED STRENGTH TO DERIVE "DIRECT PROGRAM STRENGTH" CHARGEABLE TO APPROPRIATION "MILITARY PERSONNEL, NAVY"

DATE	REPORTED STRENGTH	(LESS) PAID FROM A/ RES PERS APPN	TOTAL PROGRAM STRENGTH	(LESS) REIMBURSABLES	OFFICER	ENLISTED	TOTAL	OFFICER	ENLISTED	TOTAL	OFFICER	ENLISTED	OFFICER CANDIDATES
31 OCT 1979	521,887	194	521,693	394	1,469	1,469	519,830	61,511	453,897	4,422	61,511	453,897	4,422
30 NOV 1979	521,337	195	521,142	400	1,484	1,484	519,258	61,564	453,284	4,410	61,564	453,284	4,410
31 DEC 1979	521,857	194	521,663	412	1,469	1,469	519,782	61,385	453,921	4,476	61,385	453,921	4,476
31 JAN 1980	523,179	194	522,985	416	1,470	1,470	521,099	61,379	455,276	4,444	61,379	455,276	4,444
28 FEB 1980	525,485	196	525,289	420	1,463	1,463	523,406	61,383	457,572	4,451	61,383	457,572	4,451
31 MAR 1980	525,787	195	525,592	420	1,441	1,441	523,731	61,455	457,886	4,390	61,455	457,886	4,390
30 APR 1980	525,559	192	525,367	413	1,407	1,407	523,547	61,924	457,258	4,365	61,924	457,258	4,365
31 MAY 1980	529,078	192	528,886	422	1,393	1,393	527,071	63,016	459,691	4,364	63,016	459,691	4,364
30 JUN 1980	527,427	195	527,232	419	1,317	1,317	525,496	62,855	459,270	3,371	62,855	459,270	3,371
31 JUL 1980	525,044	197	524,847	427	1,292	1,292	523,128	62,104	457,707	3,317	62,104	457,707	3,317
31 AUG 1980	527,296	199	527,097	429	1,292	1,292	525,376	62,099	459,976	3,301	62,099	459,976	3,301

A/ NAVAL RESERVE PERSONNEL ON ACTIVE DUTY UNDER PROVISIONS OF SEC. 265, TITLE 10, U.S. CODE PAID FROM THE NAVAL RESERVE PERSONNEL APPROPRIATION.

DEPARTMENT OF DEFENSE
WASHINGTON HEADQUARTERS SERVICES
DIRECTORATE FOR INFORMATION
OPERATIONS AND REPORTS

TABLE P23.61

DEPARTMENT OF DEFENSE
MARINE CORPS ACTIVE DUTY MILITARY PERSONNEL

REPORTED STRENGTH, AND ADJUSTMENTS TO REPORTED STRENGTH TO DERIVE "DIRECT PROGRAM STRENGTH" CHARGEABLE TO APPROPRIATION "MILITARY PERSONNEL, MARINE CORPS"

DATE	REPORTED STRENGTH	(LESS) PAID FROM A/ RES PERS APPN	TOTAL PROGRAM STRENGTH	(LESS) REIMBURSABLES	OFFICER ENLISTED	TOTAL	DIRECT PROGRAM STRENGTH CHARGEABLE TO APPN. "MILITARY PERSONNEL, MARINE CORPS"	ENLISTED	OFFICER	OFFICER CANDIDATES
31 OCT 1979	184,539	64	184,475	21	1	184,453	184,453	166,376	18,077	-
30 NOV 1979	183,796	65	183,731	21	1	183,709	183,709	165,735	17,974	-
31 DEC 1979	181,902	64	181,838	21	1	181,816	181,816	163,798	18,018	-
31 JAN 1980	182,020	64	181,956	21	1	181,934	181,934	164,008	17,926	-
28 FEB 1980	182,358	65	182,293	21	1	182,271	182,271	164,168	18,083	-
31 MAR 1980	182,328	67	182,261	21	1	182,239	182,239	164,202	18,037	-
30 APR 1980	181,322	67	181,255	21	1	181,233	181,233	163,239	17,994	-
31 MAY 1980	181,132	67	181,065	20	1	181,044	181,044	162,932	18,112	-
30 JUN 1980	184,551	67	184,484	19	1	184,464	184,464	166,082	18,382	-
31 JUL 1980	186,040	67	185,973	23	1	185,949	185,949	167,793	18,156	-
31 AUG 1980	187,647	67	187,580	23	1	187,556	187,556	169,310	18,246	-

A/ MARINE CORPS RESERVE PERSONNEL ON ACTIVE DUTY UNDER PROVISIONS OF SEC. 265, TITLE 10, U.S. CODE PAID FROM THE MARINE CORPS RESERVE PERSONNEL APPROPRIATION.

DEPARTMENT OF DEFENSE
WASHINGTON HEADQUARTERS SERVICES
DIRECTORATE FOR INFORMATION
OPERATIONS AND REPORTS

TABLE P23.71

DEPARTMENT OF DEFENSE
AIR FORCE ACTIVE DUTY MILITARY PERSONNEL

REPORTED STRENGTH, AND ADJUSTMENTS TO REPORTED STRENGTH TO DERIVE "DIRECT PROGRAM STRENGTH" CHARGEABLE TO APPROPRIATION "MILITARY PERSONNEL, AIR FORCE"

DATE	REPORTED STRENGTH	(LESS) ANG/AFR	TOTAL PROGRAM STRENGTH	(LESS) REIMBURSABLES	TOTAL	OFFICER	ENLISTED	TOTAL	OFFICER	ENLISTED	USAF & AVCADS
31 OCT 1979	559,216		558,983		558,983						
30 NOV 1979	558,462	236	558,226		558,226						
31 DEC 1979	556,861	234	556,627		556,627						
31 JAN 1980	557,516	243	557,273		557,273						
28 FEB 1980	557,883	236	557,647		557,647						
31 MAR 1980	558,133	237	557,896		557,896						
30 APR 1980	556,935	235	556,700		556,700						
31 MAY 1980	556,310	231	556,079		556,079						
30 JUN 1980	558,608	235	558,373		558,373						
31 JUL 1980	559,772	234	559,538		559,538						
31 AUG 1980	559,282	234	559,048		559,048						

DEPARTMENT OF DEFENSE
WASHINGTON HEADQUARTERS SERVICES
DIRECTORATE FOR INFORMATION
OPERATIONS AND REPORTS

TABLE P25.6

DEPARTMENT OF DEFENSE
 WOMEN MILITARY PERSONNEL ON ACTIVE DUTY, OFFICERS, AND ENLISTED BY SERVICE

DATE	TOTAL DOD			ARMY			NAVY			MARINE CORPS			AIR FORCE		
	TOTAL	OFF	ENL AND OFF CAND	TOTAL	OFF	ENL	TOTAL	OFF	ENL AND OFF CAND	TOTAL	OFF	ENL	TOTAL	OFF	ENL
31 OCT 79	153,265	19,050	134,215	63,806	6,961	56,845	29,855	4,378	25,477	5,922	456	5,466	53,682	7,255	46,427
30 NOV 79	155,902	19,209	136,693	64,668	6,873	57,795	30,366	4,432	25,934	6,026	456	5,570	54,842	7,448	47,394
31 DEC 79	156,851	19,241	137,610	64,425	6,882	57,543	31,077	4,410	26,667	6,057	464	5,593	55,292	7,485	47,807
31 JAN 80	159,231	19,470	139,761	65,503	6,907	58,596	31,610	4,488	27,122	6,143	482	5,661	55,975	7,593	48,382
28 FEB 80	161,163	19,588	141,575	65,721	6,894	58,827	32,368	4,529	27,839	6,198	481	5,717	56,876	7,684	49,192
31 MAR 80	162,201	19,806	142,395	65,501	6,982	58,519	32,801	4,562	28,239	6,248	475	5,773	57,651	7,767	49,884
30 APR 80	162,363	19,862	142,501	65,034	6,948	58,086	33,257	4,576	28,681	6,288	474	5,814	57,784	7,864	49,920
31 MAY 80	163,306	20,388	142,918	64,736	7,213	57,523	33,794	4,639	29,155	6,309	483	5,826	58,467	8,053	50,414
30 JUN 80	164,892	20,536	144,356	65,037	7,262	57,775	33,942	4,671	29,271	6,463	501	5,962	59,450	8,102	51,348
31 JUL 80	166,803	20,980	145,823	66,161	7,468	58,693	34,135	4,700	29,435	6,477	497	5,980	60,030	8,315	51,715
31 AUG 80	169,424	21,222	148,202	67,713	7,535	60,178	34,732	4,752	29,980	6,702	492	6,210	60,277	8,443	51,834

DEPARTMENT OF DEFENSE
 WASHINGTON HEADQUARTERS SERVICES
 DIRECTORATE FOR INFORMATION
 OPERATIONS AND REPORTS

TABLE P26.0

DEPARTMENT OF DEFENSE
MILITARY PERSONNEL ON ACTIVE DUTY BY GRADE IN WHICH SERVING A/

AUGUST 31, 1980

RANK/GRADE	TOTAL				NAVY	MARINE CORPS	AIR FORCE
	ARMY	DOD					
GENERAL OF ARMY - FLEET ADMIRAL	1						
GENERAL - ADMIRAL	32		9	8		2	13
LT GENERAL - VICE ADMIRAL	109		32	31		7	39
MAJ GENERAL - REAR ADMIRAL (U)	406		167	93		24	122
BRIG GENERAL - REAR ADMIRAL (L)	538		209	122		33	174
COLONEL - CAPTAIN	14,170		4,662	3,632		592	5,284
LIEUTENANT COL - COMMANDER	33,166		11,143	7,640		1,528	12,855
MAJOR - LT COMMANDER	49,530		16,056	12,301		2,879	18,294
CAPTAIN - LIEUTENANT	85,181		28,473	16,741		4,630	35,337
1ST LIEUTENANT - LIEUTENANT (JG)	36,256		11,388	9,859		4,611	10,398
2ND LIEUTENANT - ENSIGN	40,995		13,272	9,259		2,805	15,659
CHIEF WARRANT OFFICER W-4	2,127		1,393	552		182	-
CHIEF WARRANT OFFICER W-3	4,490		3,926	511		53	-
CHIEF WARRANT OFFICER W-2	7,708		5,213	1,978		517	-
WARRANT OFFICER W-1	3,300		2,827	-		473	-
TOTAL OFFICERS	278,009		98,771	62,727		18,336	98,175
E-9	12,641		3,730	3,234		1,215	4,462
E-8	33,396		13,195	8,485		2,812	8,904
E-7	115,643		45,416	28,749		8,378	33,100
E-6	206,653		75,018	67,220		12,806	51,609
E-5	320,525		118,056	80,773		22,962	98,734
E-4	401,668		169,031	102,704		26,200	103,733
E-3	302,758		97,751	64,149		42,128	98,736
E-2	175,903		67,591	50,015		28,296	30,001
E-1	189,499		81,668	55,939		24,520	27,372
TOTAL ENLISTED	1,758,686		671,456	461,268		169,311	456,651
CADETS & MIDSHIPMEN	12,137		4,380	3,301		-	4,456
GRAND TOTAL	2,048,832		774,607	527,296		187,647	559,282

A/ INCLUDES REIMBURSABLE ACTIVE DUTY
MILITARY PAY STRENGTHS AND ACTIVE
DUTY MILITARY PERSONNEL PAID FROM
CIVIL FUNCTIONS, RESERVE, AND
NATIONAL GUARD APPROPRIATIONS.

DEPARTMENT OF DEFENSE
WASHINGTON HEADQUARTERS SERVICES
DIRECTORATE FOR INFORMATION
OPERATIONS AND REPORTS

TABLE P26.04

DEPARTMENT OF DEFENSE
MILITARY PERSONNEL ON ACTIVE DUTY BY GRADE IN WHICH SERVING

REGULAR A/

AUGUST 31, 1980

RANK/GRADE	TOTAL DOD	ARMY	NAVY	MARINE CORPS	AIR FORCE
GENERAL OF ARMY - FLEET ADMIRAL	1	-	-	-	-
GENERAL - ADMIRAL	32	9	8	2	13
LT GENERAL - VICE ADMIRAL	108	31	31	7	39
MAJ GENERAL - REAR ADMIRAL (U)	397	165	92	23	117
BRIG GENERAL - REAR ADMIRAL (L)	533	207	121	33	172
COLONEL - CAPTAIN	13,390	4,363	3,461	571	4,995
LIEUTENANT COL - COMMANDER	29,524	9,243	7,112	1,508	11,661
MAJOR - LT COMMANDER	37,013	9,636	10,879	2,788	13,710
CAPTAIN - LIEUTENANT	48,584	11,786	12,146	4,043	20,609
1ST LIEUTENANT - LIEUTENANT (JG)	14,764	4,006	5,924	2,429	2,405
2ND LIEUTENANT - ENSIGN	12,137	5,008	4,496	869	1,764
CHIEF WARRANT OFFICER W-4	1,667	947	543	177	-
CHIEF WARRANT OFFICER W-3	2,470	1,910	509	51	-
CHIEF WARRANT OFFICER W-2	3,638	1,169	1,957	512	-
WARRANT OFFICER W-1	485	14	-	471	-
TOTAL OFFICERS	164,743	48,495	47,279	13,484	55,485
E-9	12,506	3,729	3,112	1,211	4,454
E-8	33,020	13,190	8,131	2,800	8,899
E-7	114,397	45,401	27,575	8,341	33,080
E-6	203,383	74,995	64,002	12,781	51,605
E-5	315,566	118,019	75,940	22,881	98,726
E-4	392,594	168,504	94,226	26,185	103,679
E-3	292,537	96,084	55,803	42,086	98,564
E-2	162,782	66,256	38,315	28,217	29,994
E-1	176,721	81,127	44,020	24,394	27,180
TOTAL ENLISTED	1,703,506	667,305	411,124	168,896	456,181
REGULAR TOTAL	1,868,249	715,800	458,403	182,380	511,666

A/ REGULAR PLUS RETIRED REGULAR
OFFICERS ON ACTIVE DUTY.

DEPARTMENT OF DEFENSE
WASHINGTON HEADQUARTERS SERVICES
DIRECTORATE FOR INFORMATION
OPERATIONS AND REPORTS

TABLE P26.05
 DEPARTMENT OF DEFENSE
 MILITARY PERSONNEL ON ACTIVE DUTY BY GRADE IN WHICH SERVING
 RESERVE A/
 AUGUST 31, 1980

RANK/GRADE	ARMY	NAVY	MARINE CORPS	AIR FORCE
GENERAL OF ARMY - FLEET ADMIRAL	-	-	-	-
GENERAL - ADMIRAL	-	-	-	-
LT GENERAL - VICE ADMIRAL	1	-	-	-
MAJ GENERAL - REAR ADMIRAL (U)	2	1	1	5
BRIG GENERAL - REAR ADMIRAL (L)	2	1	-	2
COLONEL - CAPTAIN	780	171	21	289
LIEUTENANT COL - COMMANDER	3,642	528	20	1,194
MAJOR - LT COMMANDER	12,517	1,422	91	4,584
CAPTAIN - LIEUTENANT	36,597	4,595	587	14,728
1ST LIEUTENANT - LIEUTENANT (JG)	21,492	3,935	2,182	7,993
2ND LIEUTENANT - ENSIGN	28,858	4,763	1,936	13,895
CHIEF WARRANT OFFICER W-4	460	9	0	-
CHIEF WARRANT OFFICER W-3	2,020	2	2	-
CHIEF WARRANT OFFICER W-2	4,070	21	0	-
WARRANT OFFICER W-1	2,815	-	2	-
TOTAL OFFICERS	113,266	15,448	4,852	42,690
E-9	135	122	4	8
E-8	376	354	12	5
E-7	1,246	1,174	37	20
E-6	3,270	3,218	25	4
E-5	4,959	4,833	81	8
E-4	9,074	8,478	15	54
E-3	10,221	8,346	36	172
E-2	13,121	11,700	79	7
E-1	12,778	11,919	126	192
TOTAL ENLISTED	55,180	50,144	415	470
RESERVE TOTAL	168,446	65,592	5,267	43,160

A/ INCLUDES RESERVE, NATIONAL GUARD, AUS, AND AFUS OFFICERS ON ACTIVE DUTY.

DEPARTMENT OF DEFENSE
 WASHINGTON HEADQUARTERS SERVICES
 DIRECTORATE FOR INFORMATION OPERATIONS AND REPORTS

TABLE P27.1

DEPARTMENT OF DEFENSE
SUMMARY OF ENLISTED PERSONNEL PROCUREMENT
FISCAL YEAR 1980

	OCT 1979	NOV 1979	DEC 1979	JAN 1980	FEB 1980	MAR 1980
TOTAL DEPARTMENT OF DEFENSE	52,500	46,109	33,431	53,224	48,466	45,694
INDUCTIONS	-	-	-	-	-	-
FIRST ENLISTMENTS	31,154	26,620	17,681	32,445	28,649	25,512
IMMEDIATE REENLISTMENTS	16,587	15,356	13,635	15,393	15,072	15,267
OTHER REENLISTMENTS	2,140	1,899	1,507	2,500	2,238	2,122
RESERVES TO ACTIVE DUTY A/	2,619	2,234	608	2,886	2,507	2,793
ARMY	26,059	22,055	13,723	26,015	21,669	21,839
INDUCTIONS	-	-	-	-	-	-
FIRST ENLISTMENTS	16,528	13,447	6,260	15,852	13,055	11,265
IMMEDIATE REENLISTMENTS	7,220	6,963	6,483	7,786	7,017	6,545
OTHER REENLISTMENTS	1,496	1,115	675	1,459	1,145	1,070
RESERVES TO ACTIVE DUTY	815	530	305	918	452	959
NAVY	9,997	9,525	6,743	11,630	11,719	10,563
INDUCTIONS	-	-	-	-	-	-
FIRST ENLISTMENTS	5,448	4,912	4,420	6,691	6,209	5,664
IMMEDIATE REENLISTMENTS	2,468	2,491	1,712	2,504	3,011	2,639
OTHER REENLISTMENTS	329	462	394	549	522	517
RESERVES TO ACTIVE DUTY	1,752	1,660	217	1,886	1,977	1,743
MARINE CORPS	4,596	3,897	3,252	4,340	4,340	3,899
INDUCTIONS	-	-	-	-	-	-
FIRST ENLISTMENTS	2,796	2,730	1,869	3,151	3,151	2,624
IMMEDIATE REENLISTMENTS	1,652	995	1,013	878	878	1,003
OTHER REENLISTMENTS	102	132	288	239	239	187
RESERVES TO ACTIVE DUTY	46	40	82	72	72	85
AIR FORCE	11,848	10,632	9,713	11,239	10,738	9,393
INDUCTIONS	-	-	-	-	-	-
FIRST ENLISTMENTS	6,382	5,531	5,132	6,751	6,234	5,959
IMMEDIATE REENLISTMENTS	5,247	4,907	4,427	4,225	4,166	3,080
OTHER REENLISTMENTS	213	190	150	253	332	348
RESERVES TO ACTIVE DUTY	6	4	4	10	6	6

A/ INCLUDES NATIONAL GUARD.

DEPARTMENT OF DEFENSE
WASHINGTON HEADQUARTERS SERVICES
DIRECTORATE FOR INFORMATION
OPERATIONS AND REPORTS

TABLE P27.1

DEPARTMENT OF DEFENSE
SUMMARY OF ENLISTED PERSONNEL PROCUREMENT
FISCAL YEAR 1980

	APR 1980	MAY 1980	JUN 1980	JUL 1980	AUG 1980	SEP 1980
TOTAL DEPARTMENT OF DEFENSE	40,455	44,712	52,940	58,273	57,597	-
INDUCTIONS	-	-	-	-	-	-
FIRST ENLISTMENTS	20,857	24,843	35,185	38,575	39,994	-
IMMEDIATE REENLISTMENTS	15,863	15,637	14,468	15,758	14,069	-
OTHER REENLISTMENTS	2,013	2,285	2,049	2,420	2,258	-
RESERVES TO ACTIVE DUTY A/	1,722	1,947	1,238	1,520	1,276	-
ARMY	18,661	19,859	22,372	27,765	23,039	-
INDUCTIONS	-	-	-	-	-	-
FIRST ENLISTMENTS	9,474	11,191	14,442	19,644	16,146	-
IMMEDIATE REENLISTMENTS	7,609	7,257	6,675	6,443	5,741	-
OTHER REENLISTMENTS	1,134	1,224	1,148	1,463	1,071	-
RESERVES TO ACTIVE DUTY	444	187	107	215	81	-
NAVY	9,013	11,564	10,894	9,916	15,191	-
INDUCTIONS	-	-	-	-	-	-
FIRST ENLISTMENTS	4,607	6,499	7,255	5,256	10,947	-
IMMEDIATE REENLISTMENTS	2,693	2,763	2,172	3,198	2,426	-
OTHER REENLISTMENTS	474	624	451	456	730	-
RESERVES TO ACTIVE DUTY	1,239	1,678	1,016	1,006	1,088	-
MARINE CORPS	3,112	3,149	7,832	7,286	6,673	-
INDUCTIONS	-	-	-	-	-	-
FIRST ENLISTMENTS	2,201	2,010	6,321	5,672	5,159	-
IMMEDIATE REENLISTMENTS	695	821	1,171	1,214	1,096	-
OTHER REENLISTMENTS	177	237	226	292	320	-
RESERVES TO ACTIVE DUTY	39	81	114	108	98	-
AIR FORCE	9,669	10,140	11,842	13,306	12,694	-
INDUCTIONS	-	-	-	-	-	-
FIRST ENLISTMENTS	4,575	5,143	7,167	8,003	7,742	-
IMMEDIATE REENLISTMENTS	4,866	4,796	4,450	4,903	4,806	-
OTHER REENLISTMENTS	228	200	224	209	137	-
RESERVES TO ACTIVE DUTY	-	1	1	191	9	-

A/ INCLUDES NATIONAL GUARD.

DEPARTMENT OF DEFENSE
WASHINGTON HEADQUARTERS SERVICES
DIRECTORATE FOR INFORMATION
OPERATIONS AND REPORTS

TABLE P27.21

DEPARTMENT OF DEFENSE
ARMY ENLISTED PERSONNEL PROCUREMENT
FISCAL YEAR 1980

	OCT 1979	NOV 1979	DEC 1979	JAN 1980	FEB 1980	MAR 1980
TOTAL	26,059	22,055	13,723	26,015	21,669	21,839
REGULAR ENL. AND REENL. - TOTAL	25,244	21,525	13,418	25,097	21,217	20,880
FIRST ENLISTMENTS	16,528	13,447	6,260	15,852	13,055	11,265
REENLISTMENTS - TOTAL	8,716	8,078	7,158	9,245	8,162	9,615
IMMEDIATE REENLISTMENTS	7,220	6,963	6,483	7,786	7,017	8,545
FORMER REGULAR	7,170	6,895	6,445	7,731	6,971	8,484
FORMER RESERVE & N.G.	50	68	38	55	46	61
FORMER INDUCTEE	-	-	-	-	-	-
REENL. OTHER THAN IMMEDIATE	1,496	1,115	675	1,459	1,145	1,070
WITHIN 2-90 DAYS AFTER SEPARATION	252	169	118	186	130	108
FORMER REGULAR	85	47	28	48	35	30
FORMER RESERVE & N.G.	139	102	83	126	73	60
FORMER INDUCTEE	10	10	4	12	13	16
FORMER OFFICER	18	10	3	-	9	2
OVER 90 DAYS AFTER SEPARATION	1,244	946	557	1,273	1,015	962
INDUCTIONS	-	-	-	-	-	-
RESERVES AND N.G. CALLS	815	530	305	918	452	959

DEPARTMENT OF DEFENSE
WASHINGTON HEADQUARTERS SERVICES
DIRECTORATE FOR INFORMATION
OPERATIONS AND REPORTS

TABLE P27.21

DEPARTMENT OF DEFENSE
ARMY ENLISTED PERSONNEL PROCUREMENT
FISCAL YEAR 1980

	APR 1980	MAY 1980	JUN 1980	JUL 1980	AUG 1980	SEP 1980
TOTAL	18,661	19,859	22,372	27,765	23,039	
REGULAR ENL. AND REENL. - TOTAL	18,217	19,672	22,265	27,550	22,958	
FIRST ENLISTMENTS	9,474	11,191	14,442	19,644	16,146	
REENLISTMENTS - TOTAL	8,743	8,481	7,823	7,906	6,812	
IMMEDIATE REENLISTMENTS	7,609	7,257	6,675	6,443	5,741	
FORMER REGULAR	7,546	7,180	6,602	6,352	5,662	
FORMER RESERVE & N.G.	63	77	73	91	79	
FORMER INDUCTEE	-	-	-	-	-	
REENL. OTHER THAN IMMEDIATE	1,134	1,224	1,148	1,463	1,071	
WITHIN 2-90 DAYS AFTER SEPARATION	110	130	118	150	109	
FORMER REGULAR	26	26	28	38	43	
FORMER RESERVE & N.G.	63	77	78	87	61	
FORMER INDUCTEE	18	23	12	25	5	
FORMER OFFICER	3	4	-	-	-	
OVER 90 DAYS AFTER SEPARATION	1,024	1,094	1,030	1,313	962	
INDUCTIONS	-	-	-	-	-	
RESERVES AND N.G. CALLS	444	187	107	215	81	

TABLE P27.22

DEPARTMENT OF DEFENSE
NAVY ENLISTED PERSONNEL PROCUREMENT
FISCAL YEAR 1980

	OCT 1979	NOV 1979	DEC 1979	JAN 1980	FEB 1980	MAR 1980
TOTAL	9,997	9,525	6,743	11,630	11,719	10,563
REGULAR ENL. AND REENL. - TOTAL	8,245	7,865	6,526	9,744	9,742	8,820
FIRST ENLISTMENTS	5,448	4,912	4,420	6,691	6,209	5,664
REENLISTMENTS - TOTAL	2,797	2,953	2,106	3,053	3,533	3,156
IMMEDIATE REENLISTMENTS	2,468	2,491	1,712	2,504	3,011	2,639
FORMER REGULAR	2,380	2,406	1,679	2,372	2,932	2,470
FORMER RESERVE	88	85	33	132	79	169
REENL. OTHER THAN IMMEDIATE	329	462	394	549	522	517
WITHIN 2-90 DAYS AFTER SEPARATION	71	94	63	100	86	90
FORMER REGULAR	71	94	63	100	86	90
FORMER RESERVE	-	-	-	-	-	-
OVER 90 DAYS AFTER SEPARATION	258	368	331	449	436	427
INDUCTIONS	-	-	-	-	-	-
RESERVES TO ACTIVE DUTY	1,752	1,660	217	1,886	1,977	1,743
FIRST ENLISTMENTS	252	286	155	272	278	203
REENLISTMENTS	83	82	49	82	89	80
REPORTED TO ACTIVE DUTY	1,417	1,292	13	1,532	1,610	1,460

DEPARTMENT OF DEFENSE
WASHINGTON HEADQUARTERS SERVICES
DIRECTORATE FOR INFORMATION
OPERATIONS AND REPORTS

TABLE P27.22

DEPARTMENT OF DEFENSE
NAVY ENLISTED PERSONNEL PROCUREMENT
FISCAL YEAR 1980

	APR 1980	MAY 1980	JUN 1980	JUL 1980	AUG 1980	SEP 1980
TOTAL	9,013	11,564	10,894	9,916	15,191	
REGULAR ENL. AND REENL. - TOTAL	7,774	9,886	9,878	8,910	14,103	
FIRST ENLISTMENTS	4,607	6,499	7,255	5,256	10,947	
REENLISTMENTS - TOTAL	3,167	3,387	2,623	3,654	3,156	
IMMEDIATE REENLISTMENTS	2,693	2,763	2,172	3,198	2,426	
FORMER REGULAR	2,571	2,649	2,105	3,108	2,305	
FORMER RESERVE	122	114	67	90	121	
REENL. OTHER THAN IMMEDIATE	474	624	451	456	730	
WITHIN 2-90 DAYS AFTER SEPARATION	72	76	69	79	146	
FORMER REGULAR	72	76	69	79	146	
FORMER RESERVE	-	-	-	-	-	
OVER 90 DAYS AFTER SEPARATION	402	548	382	377	584	
INDUCTIONS	-	-	-	-	-	
RESERVES TO ACTIVE DUTY	1,239	1,678	1,016	1,006	1,088	
FIRST ENLISTMENTS	123	214	99	93	97	
REENLISTMENTS	74	87	52	110	87	
REPORTED TO ACTIVE DUTY	1,042	1,377	865	803	904	

DEPARTMENT OF DEFENSE
WASHINGTON HEADQUARTERS SERVICES
DIRECTORATE FOR INFORMATION
OPERATIONS AND REPORTS

TABLE P27.23

DEPARTMENT OF DEFENSE
MARINE CORPS ENLISTED PERSONNEL PROCUREMENT
FISCAL YEAR 1980

	OCT 1979	NOV 1979	DEC 1979	JAN 1980	FEB 1980	MAR 1980
TOTAL	4,596	3,897	3,252	4,340	4,340	3,899
REGULAR ENL. AND REENL. - TOTAL	4,550	3,857	3,170	4,268	4,268	3,814
FIRST ENLISTMENTS	2,796	2,730	1,869	3,151	3,151	2,624
REENLISTMENTS - TOTAL	1,754	1,127	1,301	1,117	1,117	1,190
IMMEDIATE REENLISTMENTS	1,652	995	1,013	878	878	1,003
FORMER REGULAR A/ FORMER RESERVE FORMER INDUCTEE	1,606 46 -	966 29 -	968 45 -	834 44 -	834 44 -	971 32 -
REENL. OTHER THAN IMMEDIATE	102	132	288	239	239	187
WITHIN 2-90 DAYS AFTER SEPARATION	1	1	13	3	3	-
FORMER REGULAR FORMER RESERVE FORMER INDUCTEE	1 - -	1 - -	5 8 -	3 - -	3 - -	- - -
OVER 90 DAYS AFTER SEPARATION B/	101	131	275	236	236	187
INDUCTIONS	-	-	-	-	-	-
RESERVES TO ACTIVE DUTY	46	40	82	72	72	85
FIRST ENLISTMENTS REENLISTMENTS REPORTED TO ACTIVE DUTY	- - 46	- - 40	- - 82	- - 72	- - 72	- - 85

A/ INCLUDES EXTENSIONS FOR WHICH REENLISTMENT BONUS IS PAID.

B/ INCLUDES ENLISTMENTS OF FORMER OFFICERS.

DEPARTMENT OF DEFENSE
WASHINGTON HEADQUARTERS SERVICES
DIRECTORATE FOR INFORMATION
OPERATIONS AND REPORTS

TABLE P27.23

DEPARTMENT OF DEFENSE
MARINE CORPS ENLISTED PERSONNEL PROCUREMENT
FISCAL YEAR 1980

	APR 1980	MAY 1980	JUN 1980	JUL 1980	AUG 1980	SEP 1980
TOTAL	3,112	3,149	7,632	7,286	6,673	
REGULAR ENL. AND REENL. - TOTAL	3,073	3,068	7,718	7,178	6,575	
FIRST ENLISTMENTS	2,201	2,010	6,321	5,672	5,159	
REENLISTMENTS - TOTAL	872	1,058	1,397	1,506	1,416	
IMMEDIATE REENLISTMENTS	695	821	1,171	1,214	1,096	
FORMER REGULAR A/ FORMER RESERVE FORMER INDUCTEE	671 24 -	790 31 -	1,123 48 -	1,151 63 -	1,041 55 -	
REENL. OTHER THAN IMMEDIATE	177	237	226	292	320	
WITHIN 2-90 DAYS AFTER SEPARATION	-	-	-	-	30	
FORMER REGULAR FORMER RESERVE FORMER INDUCTEE	- - -	- - -	- - -	- - -	30 30 -	
OVER 90 DAYS AFTER SEPARATION B/	177	237	226	292	290	
INDUCTIONS	-	-	-	-	-	
RESERVES TO ACTIVE DUTY	39	81	114	108	98	
FIRST ENLISTMENTS REENLISTMENTS REPORTED TO ACTIVE DUTY	- - 39	- - 81	- - 114	- - 108	- - 98	- - 98

A/ INCLUDES EXTENSIONS FOR WHICH REENLISTMENT BONUS IS PAID.
B/ INCLUDES ENLISTMENTS OF FORMER OFFICERS.

DEPARTMENT OF DEFENSE
WASHINGTON HEADQUARTERS SERVICES
DIRECTORATE FOR INFORMATION
OPERATIONS AND REPORTS

TABLE P27.24
 DEPARTMENT OF DEFENSE
 AIR FORCE ENLISTED PERSONNEL PROCUREMENT
 FISCAL YEAR 1980

	OCT 1979	NOV 1979	DEC 1979	JAN 1980	FEB 1980	MAR 1980
TOTAL	11,848	10,632	9,713	11,239	10,738	9,393
REGULAR ENL. AND REENL. - TOTAL	11,842	10,628	9,709	11,229	10,732	9,387
FIRST ENLISTMENTS	6,382	5,531	5,132	6,751	6,234	5,959
REENLISTMENTS - TOTAL	5,460	5,097	4,577	4,478	4,498	3,428
IMMEDIATE REENLISTMENTS	5,247	4,907	4,427	4,225	4,166	3,080
FORMER REGULAR FORMER RESERVE & N.G.	5,247	4,907	4,426	4,225	4,165	3,079
REENL. OTHER THAN IMMEDIATE	213	190	150	253	332	348
WITHIN 2-90 DAYS AFTER SEPARATION	-	-	-	-	-	-
FORMER REGULAR FORMER RESERVE & N.G.	-	-	-	-	-	-
OVER 90 DAYS AFTER SEPARATION A/	213	190	150	253	332	348
INDUCTIONS	-	-	-	-	-	-
RESERVES & N.G. TO ACTIVE DUTY	6	4	4	10	6	6

A/ INCLUDES ENLISTMENTS OF FORMER COMMISSIONED AND WARRANT OFFICERS.

DEPARTMENT OF DEFENSE
 WASHINGTON HEADQUARTERS SERVICES
 DIRECTORATE FOR INFORMATION
 OPERATIONS AND REPORTS

TABLE P27.24

DEPARTMENT OF DEFENSE
AIR FORCE ENLISTED PERSONNEL PROCUREMENT
FISCAL YEAR 1980

	APR 1980	MAY 1980	JUN 1980	JUL 1980	AUG 1980	SEP 1980
TOTAL	9,669	10,140	11,842	13,306	12,694	
REGULAR ENL. AND REENL. - TOTAL	9,669	10,139	11,841	13,115	12,685	
FIRST ENLISTMENTS	4,575	5,143	7,167	8,003	7,742	
REENLISTMENTS - TOTAL	5,094	4,996	4,674	5,112	4,943	
IMMEDIATE REENLISTMENTS	4,866	4,796	4,450	4,903	4,806	
FORMER REGULAR FORMER RESERVE & N.G.	4,864	4,794	4,450	4,903	4,806	
	2	2				
REENL. OTHER THAN IMMEDIATE	228	200	224	209	137	
WITHIN 2-90 DAYS AFTER SEPARATION	-	-	-	-	-	
FORMER REGULAR FORMER RESERVE & N.G.	-	-	-	-	-	
OVER 90 DAYS AFTER SEPARATION A/	228	200	224	209	137	
INDUCTIONS	-	-	-	-	-	
RESERVES & N.G. TO ACTIVE DUTY	-	1	1	191	9	

A/ INCLUDES ENLISTMENTS OF FORMER COMMISSIONED AND WARRANT OFFICERS.

TABLE R12 0

DEPARTMENT OF DEFENSE
RESERVE STRENGTH - OFFICER AND ENLISTED
NOT ON ACTIVE DUTY

DATE	TOTAL	OFFICERS	ENLISTED A/
31 OCT 1979	2,119,750	663,212	1,456,538
30 NOV 1979	2,126,353	664,288	1,462,075
31 DEC 1979	2,130,130	663,133	1,466,997
31 JAN 1980	2,129,646	662,563	1,467,083
28 FEB 1980	2,133,456	663,894	1,469,562
31 MAR 1980	2,132,155	664,441	1,467,724
30 APR 1980	2,130,393	663,835	1,466,558
31 MAY 1980	2,127,182	664,233	1,462,949
30 JUN 1980	2,132,835	663,535	1,469,300
31 JUL 1980	2,144,633	666,114	1,478,489
31 AUG 1980	2,156,177	666,098	1,490,079

A/ INCLUDES OFFICER CANDIDATES

DEPARTMENT OF DEFENSE
WASHINGTON HEADQUARTERS SERVICES
DIRECTORATE FOR INFORMATION
OPERATIONS AND REPORTS

TABLE R13.0

DEPARTMENT OF DEFENSE
 READY RESERVE AND ACTIVE DUTY STRENGTH COMPARED TO STATUTORY LIMITATION
 AUGUST 31, 1980

	TOTAL	ON ACTIVE DUTY	NOT ON ACTIVE DUTY
STATUTORY READY RESERVE LIMITATION A/	2,900,000		
DIFFERENCE	1,460,722		
READY RESERVE AND ACTIVE DUTY STRENGTH	1,439,278	169,582	1,269,696
COAST GUARD RESERVE	21,826	1,136	20,690
DDG RESERVE	1,417,452	168,446	1,249,006
ARMY	831,979	54,427	777,552
NATIONAL GUARD B/	369,914	1,503	368,411
ARMY RESERVE	462,065	52,924	409,141
NAVAL RESERVE	246,137	65,592	180,545
MARINE CORPS RESERVE	96,811	5,267	91,544
AIR FORCE	242,525	43,160	199,365
AIR NATIONAL GUARD C/	96,126	270	95,856
AIR FORCE RESERVE	146,399	42,890	103,509

A/ SECTION 205(B), ARMED FORCES RESERVE ACT OF 1952, AS AMENDED.
 B/ INCLUDES "INACTIVE NATIONAL GUARD" NUMBERING 5,400 AND REP'S NUMBERING 1,353.
 C/ INCLUDES REP'S IN A NON-PAY STATUS NUMBERING 302.

DEPARTMENT OF DEFENSE
 WASHINGTON HEADQUARTERS SERVICES
 DIRECTORATE FOR INFORMATION
 OPERATIONS AND REPORTS

TABLE R14.0

DEPARTMENT OF DEFENSE
RESERVE COMPONENT PERSONNEL BY RESERVE CATEGORY
NOT ON ACTIVE DUTY

DATE	TOTAL	READY	STANDBY	RETIRED
31 OCT 1979	2,119,750	1,213,769	103,160	802,821
30 NOV 1979	2,126,363	1,220,242	101,822	804,299
31 DEC 1979	2,130,130	1,223,844	101,554	804,732
31 JAN 1980	2,129,646	1,223,082	99,484	807,080
28 FEB 1980	2,133,456	1,227,561	97,545	808,350
31 MAR 1980	2,132,165	1,226,255	96,006	809,904
30 APR 1980	2,130,393	1,226,823	93,935	809,635
31 MAY 1980	2,127,182	1,224,745	91,885	810,552
30 JUN 1980	2,132,835	1,229,876	90,610	812,349
31 JUL 1980	2,144,603	1,239,213	89,002	816,388
31 AUG 1980	2,156,177	1,249,006	87,363	819,808

TABLE R14.0

DEPARTMENT OF DEFENSE
RESERVE COMPONENT PERSONNEL BY RESERVE CATEGORY
NOT ON ACTIVE DUTY

OFFICERS

DATE	TOTAL	READY	STANDBY	RETIRED
31 OCT 1979	663,212	182,299	84,561	396,352
30 NOV 1979	664,268	183,819	83,693	396,776
31 DEC 1979	663,133	182,559	83,665	396,909
31 JAN 1980	662,563	182,745	82,281	397,537
28 FEB 1980	663,894	184,484	81,132	398,278
31 MAR 1980	664,441	184,584	81,008	398,849
30 APR 1980	663,835	185,154	80,500	398,181
31 MAY 1980	664,233	185,141	79,718	398,374
30 JUN 1980	663,535	185,450	79,264	398,821
31 JUL 1980	666,114	185,614	78,385	402,115
31 AUG 1980	666,098	186,515	77,250	402,333

TABLE R14.C

DEPARTMENT OF DEFENSE
RESERVE COMPONENT BY RESERVE CATEGORY
NOT ON ACTIVE DUTY

ENLISTED A/

DATE	TOTAL	READY	STANDBY	RETIRED
31 OCT 1979	1,456,538	1,031,470	18,599	406,469
30 NOV 1979	1,462,075	1,036,423	18,129	407,523
31 DEC 1979	1,466,997	1,041,285	17,889	407,823
31 JAN 1980	1,467,083	1,040,337	17,203	409,543
28 FEB 1980	1,469,562	1,043,077	16,413	410,072
31 MAR 1980	1,467,724	1,041,671	14,998	411,055
30 APR 1980	1,466,558	1,041,669	13,435	411,454
31 MAY 1980	1,462,949	1,039,604	12,167	411,178
30 JUN 1980	1,469,300	1,044,426	11,346	413,528
31 JUL 1980	1,478,489	1,053,599	10,617	414,273
31 AUG 1980	1,490,079	1,062,491	10,113	417,475

A/ INCLUDES OFFICER CANDIDATES.

TABLE R18.0

DEPARTMENT OF DEFENSE
SELECTED RESERVE

DATE	TOTAL	DRILL PAY STATUS	INITIAL ACTIVE DUTY TRAINING
31 OCT 1979	805,869	778,318	27,551
30 NOV 1979	808,630	781,895	26,735
31 DEC 1979	810,860	787,399	23,461
31 JAN 1980	812,859	789,438	23,421
28 FEB 1980	817,152	793,025	24,127
31 MAR 1980	818,348	793,245	25,103
30 APR 1980	819,429	793,787	25,642
31 MAY 1980	821,409	795,057	26,352
30 JUN 1980	825,622	790,967	34,655
31 JUL 1980	829,636	791,263	38,373
31 AUG 1980	835,574	799,062	36,512

DEPARTMENT OF DEFENSE
WASHINGTON HEADQUARTERS SERVICES
DIRECTORATE FOR INFORMATION
OPERATIONS AND REPORTS

TABLE R21.0
 DEPARTMENT OF DEFENSE
 RESERVE PERSONNEL ON ACTIVE DUTY BY COMPONENT
 AUGUST 31, 1980

COMPONENT/PERSONNEL	TOTAL	OFFICER	ENLISTED A/
TOTAL DEPARTMENT OF DEFENSE	168,446	113,266	55,180
ARMY - TOTAL	54,427	50,276	4,151
NATIONAL GUARD OF THE U. S.	1,503	430	1,073
ARMY RESERVE	52,924	49,846	3,078
NAVAL RESERVE	65,592	15,448	50,144
MARINE CORPS RESERVE	5,267	4,852	415
AIR FORCE - TOTAL	43,160	42,690	470
AIR NATIONAL GUARD OF THE U. S.	270	155	115
AIR FORCE RESERVE	42,890	42,535	355

A/ INCLUDES OFFICER CANDIDATES.

DEPARTMENT OF DEFENSE
 WASHINGTON HEADQUARTERS SERVICES
 DIRECTORATE FOR INFORMATION
 OPERATIONS AND REPORTS

TABLE R22.0

DEPARTMENT OF DEFENSE
RESERVE STRENGTH ON ACTIVE DUTY A/

DATE	TOTAL DOD	ARMY			NAVAL RESERVE	MARINE CORPS RESERVE	AIR FORCE	
		NATIONAL GUARD	ARMY RESERVE	NAVAL RESERVE			AIR NATIONAL GUARD	AIR FORCE RESERVE
31 OCT 1979	165,200	1,790	52,850	64,014	5,119	299	41,128	
30 NOV 1979	165,287	1,792	52,495	64,179	5,076	301	41,444	
31 DEC 1979	164,506	1,700	52,196	64,423	5,025	296	40,866	
31 JAN 1980	165,369	1,807	52,963	64,773	4,959	306	40,561	
28 FEB 1980	161,285	588	49,150	65,711	4,857	297	40,682	
31 MAR 1980	167,030	1,846	52,815	66,039	4,957	299	41,074	
30 APR 1980	167,174	1,657	52,545	66,138	4,834	294	41,706	
31 MAY 1980	167,865	1,666	52,646	66,253	4,854	294	42,172	
30 JUN 1980	168,114	1,576	52,772	65,923	5,121	290	42,432	
31 JUL 1980	168,944	1,597	53,072	65,777	5,198	289	43,011	
31 AUG 1980	168,446	1,503	52,924	65,592	5,267	270	42,890	

A/ CONTINUOUS OR EXTENDED ACTIVE DUTY.
EXCLUDES ACTIVE DUTY FOR RESERVE TRAINING.

DEPARTMENT OF DEFENSE
WASHINGTON HEADQUARTERS SERVICES
DIRECTORATE FOR INFORMATION
OPERATIONS AND REPORTS

TABLE R23.0

DEPARTMENT OF DEFENSE
RESERVE PERSONNEL BY COMPONENT AND CATEGORY
NOT ON ACTIVE DUTY

AUGUST 31, 1980

COMPONENT/ PERSONNEL	TOTAL	NAT'L GUARD OF THE U.S. A/	ARMY RESERVE	NAVAL RESERVE	MARINE CORPS RESERVE	AIR B/ NAT'L GUARD OF THE U.S.	AIR FORCE RESERVE
TOTAL	2,156,177	368,411	841,136	332,673	101,839	95,856	416,262
OFFICER	666,098	37,659	273,079	162,660	13,983	11,729	166,988
ENLISTED C/	1,490,079	330,752	568,057	170,013	87,856	84,127	249,274
READY RESERVE	1,249,006	368,411	409,141	180,545	91,544	95,856	103,509
OFFICER	186,515	37,659	73,745	34,996	6,274	11,729	22,112
ENLISTED C/	1,062,491	330,752	335,396	145,549	85,270	84,127	81,397
STANDBY RESERVE	87,363	-	19,817	23,733	2,039	-	41,774
OFFICER	77,250	-	18,848	20,268	1,802	-	36,332
ENLISTED	10,113	-	969	3,465	237	-	5,442
ACTIVE STATUS	24,854	-	9,241	3,400	1,954	-	10,259
OFFICER	16,656	-	8,273	67	1,717	-	6,599
ENLISTED	8,198	-	968	3,333	237	-	3,660
INACTIVE STATUS	62,509	-	10,576	20,333	85	-	31,515
OFFICER	60,594	-	10,575	20,201	85	-	29,733
ENLISTED	1,915	-	1	132	-	-	1,782
RETIRED RESERVE	819,808	-	412,178	128,395	8,256	-	270,979
OFFICER	402,333	-	180,486	107,396	5,907	-	108,544
ENLISTED	417,475	-	231,692	20,999	2,349	-	162,435

A/ INCLUDES "INACTIVE NATIONAL GUARD" NUMBERING 5,400 TOTAL 666 OFFICERS, 4,734 ENLISTED
AND RESERVE ENLISTMENT PROGRAM (REPS) IN A NON-PAY STATUS NUMBERING 1,353

B/ INCLUDES REPS IN A NON-PAY STATUS NUMBERING 302

C/ INCLUDES OFFICER CANDIDATES.

DEPARTMENT OF DEFENSE
WASHINGTON HEADQUARTERS SERVICES
DIRECTORATE FOR INFORMATION
OPERATIONS AND REPORTS

TABLE R24.0

DEPARTMENT OF DEFENSE
RESERVE STRENGTH NOT ON ACTIVE DUTY A/

DATE	TOTAL DOD	ARMY				AIR FORCE		
		B/ NATIONAL GUARD	ARMY RESERVE	NAVAL RESERVE	MARINE CORPS RESERVE	AIR NATIONAL GUARD	AIR FORCE RESERVE	
31 OCT 1979	2,119,750	350,631	830,256	328,822	100,732	93,650	415,659	
30 NOV 1979	2,126,363	351,959	831,425	331,478	102,232	93,474	415,795	
31 DEC 1979	2,130,130	353,553	833,887	333,015	99,881	93,598	416,196	
31 JAN 1980	2,129,646	354,014	833,203	333,036	99,317	93,798	416,278	
28 FEB 1980	2,133,456	356,567	833,047	334,155	99,039	93,955	416,693	
31 MAR 1980	2,132,165	358,056	831,281	333,175	98,180	94,304	417,169	
30 APR 1980	2,130,393	358,648	832,278	331,589	97,753	94,524	415,601	
31 MAY 1980	2,127,182	360,645	832,609	329,700	94,440	94,657	415,131	
30 JUN 1980	2,132,835	363,048	832,863	330,310	96,826	94,743	415,045	
31 JUL 1980	2,144,603	365,194	838,023	331,079	100,483	95,255	414,569	
31 AUG 1980	2,156,177	368,411	841,136	332,673	101,839	95,856	416,262	

A/ INCLUDES RESERVES ON ACTIVE DUTY
FOR RESERVE TRAINING PURPOSES.
B/ INCLUDES "INACTIVE" NATIONAL GUARD.

DEPARTMENT OF DEFENSE
WASHINGTON HEADQUARTERS SERVICES
DIRECTORATE FOR INFORMATION
OPERATIONS AND REPORTS

TABLE R26.5

DEPARTMENT OF DEFENSE
SELECTED RESERVE DRILL PAY STRENGTH

AUGUST 31, 1980

COMPONENT/ PERSONNEL	TOTAL	DRILL PAY STATUS A/	INITIAL ACTIVE DUTY TRAINING B/
TOTAL DOD	835,574	799,062	36,512
OFFICERS	116,009	116,008	1
ENLISTED	719,565	683,054	36,511
ARMY NATIONAL GUARD			
OFFICERS	361,658	341,867	19,791
ENLISTED	36,993	36,993	-
	324,665	304,874	19,791
ARMY RESERVE			
OFFICERS	199,936	192,067	7,869
ENLISTED	35,461	35,461	-
	164,475	156,606	7,869
NAVAL RESERVE			
OFFICERS	85,768	84,971	797
ENLISTED	16,611	16,611	-
	69,157	68,360	797
MARINE CORPS RESERVE			
OFFICERS	34,742	30,177	4,565
ENLISTED	2,408	2,408	-
	32,334	27,769	4,565
AIR NATIONAL GUARD			
OFFICERS	95,554	93,017	2,537
ENLISTED	11,729	11,729	-
	83,825	81,288	2,537
AIR FORCE RESERVE			
OFFICERS	57,916	56,963	953
ENLISTED	12,807	12,806	1
	45,109	44,157	952

A/ INCLUDES PAY GROUPS A, B, C, M, P, T, Q.

B/ INCLUDES PAY GROUPS F AND U.

DEPARTMENT OF DEFENSE
WASHINGTON HEADQUARTERS SERVICES
DIRECTORATE FOR INFORMATION
OPERATIONS AND REPORTS

