

AD-A152 913

MILITARY MANPOWER STATISTICS, SEPTEMBER, FY-80, (U)
WASHINGTON HEADQUARTERS SERVICE (DOD) DIR FOR INFO
OP & RPTS. SEP 80. DIOR/MO3-80/12

1/1

UNCLASSIFIED

F/G 5/9

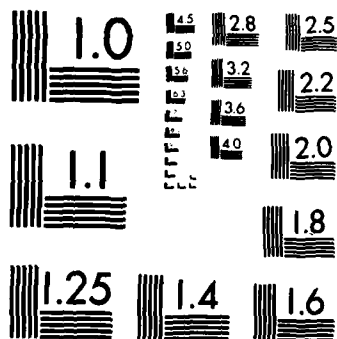
N/L

1 OF 1
AD-A152 913

END
FILMED
11 04 85

1 OF 1

AD-A152 913



MICROCOPY RESOLUTION TEST CHART
NATIONAL BUREAU OF STANDARDS-1963-A

**THIS REPORT IS UNCLASSIFIED AND
ITS DISTRIBUTION IS UNLIMITED**

MILITARY MANPOWER STATISTICS

as of SEPTEMBER 1980



4
3
2
1
0

DEPARTMENT OF DEFENSE
WASHINGTON HEADQUARTERS SERVICES
DIRECTORATE FOR INFORMATION
OPERATIONS AND REPORTS

FOREWORD

MILITARY MANPOWER STATISTICS (MMS) is a monthly publication prepared by the Washington Headquarters Services, Directorate for Information Operations and Reports (WHS/DIOR) of the Office of the Secretary of Defense.

MMS presents audited statistical data pertaining to active duty military, reserve components, and retired military personnel of the Department of Defense. The publication is generated from a computerized data base developed and maintained by the Manpower Management Information Division of WHS/DIOR.

Requests for additional copies and changes in distribution should be addressed to the Director, Washington Headquarters Services, Room 3E843, The Pentagon, Washington, DC 20301.

TABLE OF CONTENTS

<u>Number</u>	<u>Title</u>
Table P10	Military/Civilian Personnel
Table P11	Department of Defense Manpower Comparison
Table P22.1	Total Active Duty Military Personnel by Service
Table P23.1	Active Duty Officer Personnel and Percent of Total Military Personnel by Service
Table P23.3	Total Active Duty Military Personnel by Type
Table P23.4	Army Active Duty Military Personnel by Type
Table P23.5	Navy Active Duty Military Personnel by Type
Table P23.6	Marine Corps Active Duty Military Personnel by Type
Table P23.7	Air Force Active Duty Military Personnel by Type
Table P23.41	Army Active Duty Military Personnel
Table P23.51	Navy Active Duty Military Personnel
Table P23.61	Marine Corps Active Duty Military Personnel
Table P23.71	Air Force Active Duty Military Personnel
Table P25.6	Women Military Personnel on Active Duty Officers and Enlisted by Service
Table P26.0	Military Personnel on Active Duty by Grade in Which Serving
Table P26.02	Female Military Personnel on Active Duty by Grade in Which Serving
Table P26.04	Military Personnel on Active Duty by Grade in Which Serving - Regular
Table P26.05	Military Personnel on Active Duty by Grade in Which Serving - Reserve

Number

Title

Table P27.1	Summary of Enlisted Personnel Procurement
Table P27.21	Army Enlisted Personnel Procurement
Table P27.22	Navy Enlisted Personnel Procurement
Table P27.23	Marine Corps Enlisted Personnel Procurement
Table P27.24	Air Force Enlisted Personnel Procurement
Table P29.20-39.34	Reenlistment Rates by Service
Table R11.0	Reserve Component Strength Summary
Table R12.0	Reserve Strength - Officer and Enlisted Not on Active Duty
Table R13.0	Ready Reserve and Active Duty Strength Compared to Statutory Limitation
Table R14.0	Reserve Component Personnel by Reserve Category Not on Active Duty - Total
Table R14.0	Reserve Component Personnel by Reserve Category Not on Active Duty - Officers
Table R14.0	Reserve Component Personnel by Reserve Category Not on Active Duty - Enlisted
Table R18.0	Selected Reserve
Table R21.0	Reserve Personnel on Active Duty by Component
Table R22.0	Reserve Strength on Active Duty
Table R23.0	Reserve Personnel by Component and Category Not on Active Duty
Table R24.0	Reserve Strength Not on Active Duty
Table R26.5	Selected Reserve Drill Pay Strength

TABLE P10
DEPARTMENT OF DEFENSE
MILITARY/CIVILIAN PERSONNEL

	TOTAL DOD	ARMY	NAVY	MARINE CORPS	AIR FORCE
1. ACTIVE DUTY MILITARY AS OF 30 SEP 1980					
OFFICER ENLISTED ACADEMY CADETS	277,622 1,759,693 13,312	98,717 673,944 4,375	63,058 459,569 4,526	18,198 170,271 -	97,649 455,909 4,411
TOTAL ACTIVE DUTY MILITARY	2,050,627	777,036	527,153	188,469	557,969
2. GUARD AND RESERVES AS OF 30 SEP 1980					
NATIONAL GUARD IN PAID STATUS	470,360 462,845	373,788 366,585	- -	- -	96,572 96,260
RESERVES IN PAID STATUS	1,699,125 383,681	843,784 202,627	335,612 86,751	102,370 35,382	417,359 58,921
TOTAL GUARD AND RESERVES IN PAID STATUS	2,169,485 846,526	1,217,572 569,212	335,612 86,751	102,370 35,382	513,931 155,181
3. OFFICER TRAINING IN COLLEGES A/ AS OF OCTOBER 1979					
	93,295	65,186	7,633	-	20,476
4. CIVILIAN PERSONNEL - MILITARY AND CIVIL FUNCTIONS B/					
	TOTAL DOD	ARMY	C/ NAVY	AIR FORCE	OTHER D/ DEFENSE AGENCIES
AS OF 30 SEP 1980	960,113 74,570	348,534 48,713	302,498 10,731	233,129 13,404	75,952 1,722
TOTAL CIVILIAN PERSONNEL	1,034,683	397,247	313,229	246,533	77,674
A/ EXCLUDES 166,212 IN JUNIOR DIVISION, MILITARY SCHOOLS AND NATIONAL DEFENSE CADETS CORPS.					
B/ INCLUDES CIVIL FUNCTIONS EMPLOYMENT OF 33,525 ARMY AND AIR FORCE. ALSO INCLUDES DISADVANTAGED YOUTH EMPLOYEES.					
C/ INCLUDES MARINE CORPS PERSONNEL.					
D/ INCLUDES OSD/JCS.					

DEPARTMENT OF DEFENSE
WASHINGTON HEADQUARTERS SERVICES
DIRECTORATE FOR INFORMATION
OPERATIONS AND REPORTS

TABLE P22.1

DEPARTMENT OF DEFENSE
TOTAL ACTIVE DUTY MILITARY PERSONNEL BY SERVICE

DATE	TOTAL DOD	ARMY	NAVY	MARINE CORPS	AIR FORCE
OCT 31, 1979	2,029,564	763,922	521,887	184,539	559,216
NOV 30, 1979	2,029,197	765,602	521,337	183,796	558,462
DEC 31, 1979	2,020,240	759,620	521,857	181,902	556,861
JAN 31, 1980	2,028,631	765,916	523,179	182,020	557,516
FEB 28, 1980	2,032,406	766,680	525,485	182,358	557,883
MAR 31, 1980	2,033,067	766,819	525,787	182,328	558,133
APR 30, 1980	2,028,067	764,251	525,559	181,322	556,935
MAY 31, 1980	2,031,394	764,874	529,078	181,132	556,310
JUN 30, 1980	2,036,092	765,506	527,427	184,551	558,608
JUL 31, 1980	2,043,526	772,670	525,044	186,040	559,772
AUG 31, 1980	2,048,832	774,607	527,296	187,647	559,282
SEP 30, 1980	2,050,627	777,036	527,153	188,469	557,969

DEPARTMENT OF DEFENSE
WASHINGTON HEADQUARTERS SERVICES
DIRECTORATE FOR INFORMATION
OPERATIONS AND REPORTS

TABLE P11
DOD MANPOWER COMPARISON
(MILITARY & CIVIL FUNCTIONS)

DATE	TOTAL DOD	ARMY			AIR FORCE			NAVY AND MARINE CORPS			A/OSD/JCS	
		MILI-TARY	B/CIVILIAN	TOTAL	MILI-TARY	B/CIVILIAN	TOTAL	NAVY MILITARY	MARINE CORPS MILITARY	B/CIVILIAN		TOTAL
31 OCT 79	2,993,174	763,922	345,338	1,109,260	559,216	233,289	792,505	521,887	184,539	308,633	1,015,059	76,350
30 NOV 79	2,996,675	765,602	347,628	1,113,230	558,462	233,730	792,192	521,337	183,796	309,486	1,014,619	76,634
31 DEC 79	2,987,435	759,620	347,564	1,107,184	556,861	233,406	790,267	521,857	181,902	308,334	1,013,093	76,891
31 JAN 80	2,992,229	765,916	345,598	1,111,514	557,516	232,708	790,224	523,179	182,020	309,088	1,014,287	76,204
28 FEB 80	2,996,916	766,680	344,948	1,111,628	557,883	233,771	791,654	525,485	182,358	309,392	1,017,235	76,399
31 MAR 80	2,999,333	766,819	346,858	1,113,677	558,133	232,898	791,031	525,787	182,328	310,241	1,018,356	76,269
30 APR 80	2,997,238	764,251	348,543	1,112,794	556,935	232,925	789,860	525,559	181,322	311,271	1,018,152	76,432
31 MAY 80	3,006,373	764,874	352,106	1,116,980	556,310	234,327	790,637	529,078	181,132	312,191	1,022,401	76,355
30 JUN 80	3,023,982	765,506	361,713	1,127,219	558,608	239,131	797,739	527,427	184,551	316,517	1,028,495	70,529
31 JUL 80	3,033,127	772,670	361,974	1,134,644	559,772	239,573	799,345	525,044	186,040	317,469	1,028,573	70,565
31 AUG 80	3,021,672	774,607	352,651	1,127,258	559,262	232,112	791,394	527,296	187,647	312,467	1,027,410	75,610
30 SEP 80	3,010,740	777,036	348,534	1,125,570	557,969	233,129	791,098	527,153	188,469	302,498	1,018,120	75,952

A/ CIVILIAN PERSONNEL. MILITARY PERSONNEL ASSIGNED TO OSD, OJCS AND OTHER DEFENSE ACTIVITIES ARE REPORTED BY THEIR RESPECTIVE SERVICES.

B/ -TOTAL PAID EMPLOYEES- AS REPORTED OFFICIALLY TO THE OFFICE OF PERSONNEL MANAGEMENT; EXCLUDES OVERSEAS SUPPORT PERSONNEL (INDIRECT HIRE).

DEPARTMENT OF DEFENSE
WASHINGTON HEADQUARTERS SERVICES
DIRECTORATE FOR INFORMATION
OPERATIONS AND REPORTS

TABLE P23.1

DEPARTMENT OF DEFENSE
ACTIVE DUTY OFFICER PERSONNEL AND PERCENT OF TOTAL MILITARY PERSONNEL, BY SERVICE

DATE	TOTAL DOD		ARMY		NAVY		MARINE CORPS		AIR FORCE	
	NUMBER	%	NUMBER	%	NUMBER	%	NUMBER	%	NUMBER	%
OCT 31, 1979	272,799	13.4	96,864	12.7	62,099	11.9	18,162	9.8	95,674	17.1
NOV 30, 1979	272,796	13.4	96,388	12.6	62,159	11.9	18,060	9.8	96,189	17.2
DEC 31, 1979	272,618	13.5	96,338	12.7	61,991	11.9	18,103	10.0	96,186	17.3
JAN 31, 1980	273,149	13.5	96,670	12.6	61,989	11.8	18,011	9.9	96,479	17.3
FEB 28, 1980	273,009	13.4	96,320	12.6	61,999	11.8	18,169	10.0	96,521	17.3
MAR 31, 1980	273,173	13.4	96,313	12.6	62,070	11.8	18,125	9.9	96,665	17.3
APR 30, 1980	273,806	13.5	96,092	12.6	62,529	11.9	18,082	10.0	97,103	17.4
MAY 31, 1980	277,866	13.7	97,780	12.8	63,630	12.0	18,199	10.0	98,257	17.7
JUN 30, 1980	278,543	13.7	98,260	12.8	63,469	12.0	18,468	10.0	98,346	17.6
JUL 31, 1980	278,166	13.6	98,704	12.8	62,728	11.9	18,246	9.8	98,488	17.6
AUG 31, 1980	278,009	13.6	98,771	12.8	62,727	11.9	18,336	9.8	98,175	17.6
SEP 30, 1980	277,622	13.5	98,717	12.7	63,058	12.0	18,198	9.7	97,649	17.5

DEPARTMENT OF DEFENSE
WASHINGTON HEADQUARTERS SERVICES
DIRECTORATE FOR INFORMATION
OPERATIONS AND REPORTS

TABLE P23.3

DEPARTMENT OF DEFENSE
TOTAL ACTIVE DUTY MILITARY PERSONNEL BY TYPE

DATE	OFFICERS	ENLISTED	A/ OFFICER CANDIDATES	TOTAL
OCT 31, 1979	272,799	1,743,775	12,990	2,029,564
NOV 30, 1979	272,796	1,743,472	12,929	2,029,197
DEC 31, 1979	272,618	1,734,707	12,915	2,020,240
JAN 31, 1980	273,149	1,742,745	12,737	2,028,631
FEB 29, 1980	273,009	1,746,703	12,694	2,032,406
MAR 31, 1980	273,173	1,747,346	12,548	2,033,067
APR 30, 1980	273,806	1,741,789	12,472	2,028,067
MAY 31, 1980	277,866	1,742,972	10,556	2,031,394
JUN 30, 1980	278,543	1,746,468	11,081	2,036,092
JUL 31, 1980	278,166	1,753,015	12,345	2,043,526
AUG 31, 1980	278,009	1,758,686	12,137	2,048,832
SEP 30, 1980	277,622	1,759,693	13,312	2,050,627

A/ CONSISTS OF THE FOLLOWING:
FOR ARMY - CADETS, U. S. MILITARY ACADEMY
FOR NAVY - MIDSHIPMEN, U. S. NAVAL ACADEMY
FOR AIR FORCE - CADETS, U. S. AIR FORCE ACADEMY

DEPARTMENT OF DEFENSE
WASHINGTON HEADQUARTERS SERVICES
DIRECTORATE FOR INFORMATION
OPERATIONS AND REPORTS

TABLE P23.4

DEPARTMENT OF DEFENSE
ARMY ACTIVE DUTY MILITARY PERSONNEL BY TYPE

DATE	OFFICERS	ENLISTED	J. S. MILITARY ACADEMY	CADETS	TOTAL
OCT 31, 1979	96,864	662,820		4,238	763,922
NOV 30, 1979	96,388	665,009		4,205	765,602
DEC 31, 1979	96,338	659,109		4,173	759,620
JAN 31, 1980	96,670	665,093		4,153	765,916
FEB 28, 1980	96,320	666,220		4,140	766,680
MAR 31, 1980	96,313	666,426		4,080	766,819
APR 30, 1980	96,092	664,110		4,049	764,251
MAY 31, 1980	97,780	663,962		3,132	764,874
JUN 30, 1980	98,260	664,130		3,116	765,506
JUL 31, 1980	98,704	669,487		4,479	772,670
AUG 31, 1980	98,771	671,456		4,380	774,607
SEP 30, 1980	98,717	673,944		4,375	777,036

DEPARTMENT OF DEFENSE
WASHINGTON HEADQUARTERS SERVICES
DIRECTORATE FOR INFORMATION
OPERATIONS AND REPORTS

TABLE P23.5

DEPARTMENT OF DEFENSE
NAVY ACTIVE DUTY MILITARY PERSONNEL BY TYPE

DATE	OFFICERS	ENLISTED	MIDSHIPMEN		TOTAL
			U. S. NAVAL	ACADEMY	
OCT 31, 1979	62,099	455,366	4,422		521,887
NOV 30, 1979	62,159	454,768	4,410		521,337
DEC 31, 1979	61,991	455,390	4,476		521,857
JAN 31, 1980	61,989	456,746	4,444		523,179
FEB 28, 1980	61,999	459,035	4,451		525,485
MAR 31, 1980	62,070	459,327	4,390		525,787
APR 30, 1980	62,529	458,665	4,365		525,559
MAY 31, 1980	63,630	461,084	4,364		529,078
JUN 30, 1980	63,469	460,587	3,371		527,427
JUL 31, 1980	62,728	458,999	3,317		525,044
AUG 31, 1980	62,727	461,268	3,301		527,296
SEP 30, 1980	63,058	459,569	4,526		527,153

DEPARTMENT OF DEFENSE
WASHINGTON HEADQUARTERS SERVICES
DIRECTORATE FOR INFORMATION
OPERATIONS AND REPORTS

TABLE P23.6

DEPARTMENT OF DEFENSE
MARINE CORPS ACTIVE DUTY MILITARY PERSONNEL BY TYPE

DATE	OFFICERS	ENLISTED	TOTAL
OCT 31, 1979	18,162	166,377	184,539
NOV 30, 1979	18,060	165,736	183,796
DEC 31, 1979	18,103	163,799	181,902
JAN 31, 1980	18,011	164,009	182,020
FEB 28, 1980	18,169	164,189	182,358
MAR 31, 1980	18,125	164,203	182,328
APR 30, 1980	18,082	163,240	181,322
MAY 31, 1980	18,199	162,933	181,132
JUN 30, 1980	18,468	166,083	184,551
JUL 31, 1980	18,246	167,794	186,040
AUG 31, 1980	18,336	169,311	187,647
SEP 30, 1980	18,198	170,271	188,469

DEPARTMENT OF DEFENSE
WASHINGTON HEADQUARTERS SERVICES
DIRECTORATE FOR INFORMATION
OPERATIONS AND REPORTS

TABLE P23.7
 DEPARTMENT OF DEFENSE
 AIR FORCE ACTIVE DUTY MILITARY PERSONNEL BY TYPE

DATE	OFFICERS	ENLISTED	CADETS		TOTAL
			U.S.A.F.	ACADEMY	
OCT 31, 1979	95,674	459,212	4,330		559,216
NOV 30, 1979	96,189	457,959	4,314		558,462
DEC 31, 1979	96,186	456,409	4,266		556,861
JAN 31, 1980	96,479	456,897	4,140		557,516
FEB 28, 1980	96,521	457,259	4,103		557,883
MAR 31, 1980	96,665	457,390	4,078		558,133
APR 30, 1980	97,103	455,774	4,058		556,935
MAY 31, 1980	98,257	454,993	3,060		556,310
JUN 30, 1980	98,346	455,668	4,594		558,608
JUL 31, 1980	98,488	456,735	4,549		559,772
AUG 31, 1980	98,175	456,651	4,456		559,282
SEP 30, 1980	97,649	455,909	4,411		557,969

DEPARTMENT OF DEFENSE
 WASHINGTON HEADQUARTERS SERVICES
 DIRECTORATE FOR INFORMATION
 OPERATIONS AND REPORTS

TABLE P23.41

DEPARTMENT OF DEFENSE
ARMY ACTIVE DUTY MILITARY PERSONNEL

REPORTED STRENGTH, AND ADJUSTMENTS TO REPORTED STRENGTH TO DERIVE "DIRECT PROGRAM STRENGTH" CHARGEABLE TO APPROPRIATION "MILITARY PERSONNEL, ARMY"

DATE	REPORTED STRENGTH	A/ (LESS) EXCLUDABLES	OFF	ENL	TOTAL	TOTAL PROGRAM STRENGTH	(LESS) REIMBURSABLES	OFF	ENL	TOTAL	OFFICER	ENLISTED	CADETS USMA
31 OCT 1979	763,922	495	3	3	763,424	391	154	95,978	662,663	4,238			
30 NOV 1979	765,602	502	3	3	765,097	389	157	95,497	664,849	4,205			
31 DEC 1979	759,620	500	3	3	759,117	388	156	95,450	658,950	4,173			
31 JAN 1980	765,916	513	2	2	765,401	401	160	95,756	664,931	4,153			
28 FEB 1980	766,680	518	3	3	766,159	402	158	95,400	666,059	4,140			
31 MAR 1980	766,819	516	2	2	766,301	403	150	95,394	666,274	4,080			
30 APR 1980	764,251	514	2	2	763,735	402	149	95,176	663,959	4,049			
31 MAY 1980	764,874	508	2	2	764,364	408	155	96,864	663,805	3,132			
30 JUN 1980	765,506	509	1	1	764,996	572	156	97,179	663,973	3,116			
31 JUL 1980	772,670	503	2	2	772,165	566	157	97,635	669,328	4,479			
31 AUG 1980	774,607	491	1	1	774,115	549	148	97,731	671,307	4,380			
30 SEP 1980	777,036	499	1	1	776,536	393	145	97,825	673,798	4,375			

A/ ACTIVE DUTY PERSONNEL PAID BY AN APPROPRIATION OTHER THAN MILITARY PERSONNEL, ARMY, AND EXCLUDED FROM THE END STRENGTH OF THE ARMY. COMPRISED OF CIVIL WORKS PERSONNEL, AND USAR AND ARNG PERSONNEL ON STATUTORY TOURS.

DEPARTMENT OF DEFENSE
WASHINGTON HEADQUARTERS SERVICES
DIRECTORATE FOR INFORMATION
OPERATIONS AND REPORTS

TABLE P23.51

DEPARTMENT OF DEFENSE
NAVY ACTIVE DUTY MILITARY PERSONNEL

REPORTED STRENGTH, AND ADJUSTMENTS TO REPORTED STRENGTH TO DERIVE "DIRECT PROGRAM STRENGTH" CHARGEABLE TO APPROPRIATION "MILITARY PERSONNEL, NAVY"

DATE	REPORTED STRENGTH		(LESS) PAID FROM A/ RES PERS APPN		TOTAL	TOTAL PROGRAM STRENGTH		(LESS) REIMBURSABLES		TOTAL	DIRECT PROGRAM STRENGTH CHARGEABLE TO APPROPRIATION "MILITARY PERSONNEL, NAVY"		OFFICER CANDIDATES
	TOTAL	OFFICER	OFFICER	ENLISTED		OFFICER	ENLISTED	OFFICER	ENLISTED				
31 OCT 1979	521,887	194	394	1,469	519,830	61,511	453,897	4,422					
30 NOV 1979	521,337	195	400	1,484	519,258	61,564	453,284	4,410					
31 DEC 1979	521,857	194	412	1,469	519,782	61,385	453,921	4,476					
31 JAN 1980	523,179	194	416	1,470	521,099	61,379	455,276	4,444					
28 FEB 1980	525,681	196	420	1,463	523,602	61,579	457,572	4,451					
31 MAR 1980	525,982	195	420	1,441	523,926	61,650	457,886	4,390					
30 APR 1980	525,751	192	413	1,407	523,739	62,116	457,258	4,365					
31 MAY 1980	529,270	192	422	1,393	527,263	63,208	459,691	4,364					
30 JUN 1980	527,622	195	419	1,317	525,691	63,050	459,270	3,371					
31 JUL 1980	525,241	197	427	1,292	523,325	62,301	457,707	3,317					
31 AUG 1980	527,495	199	429	1,292	525,575	62,298	459,976	3,301					
30 SEP 1980	527,352	199	424	1,301	525,428	62,634	458,268	4,526					

A/ NAVAL RESERVE PERSONNEL ON ACTIVE DUTY UNDER PROVISIONS OF SEC. 265, TITLE 10, U.S. CODE PAID FROM THE NAVAL RESERVE PERSONNEL APPROPRIATION.
February through August revised.

DEPARTMENT OF DEFENSE
WASHINGTON HEADQUARTERS SERVICES
DIRECTORATE FOR INFORMATION OPERATIONS AND REPORTS

TABLE P23.61

DEPARTMENT OF DEFENSE
MARINE CORPS ACTIVE DUTY MILITARY PERSONNEL

REPORTED STRENGTH, AND ADJUSTMENTS TO REPORTED STRENGTH TO DERIVE "DIRECT PROGRAM STRENGTH" CHARGEABLE TO APPROPRIATION "MILITARY PERSONNEL, MARINE CORPS"

DATE	REPORTED STRENGTH	(LESS) PAID FROM A/ RES PERS APPN	TOTAL PROGRAM STRENGTH	TOTAL REIMBURSABLES (LESS)	OFFICER ENLISTED	TOTAL	OFFICER ENLISTED	ENLISTED	OFFICER CANDIDATES
31 OCT 1979	184,539	64	184,475	21	1	184,453	18,077	166,376	-
30 NOV 1979	183,796	65	183,731	21	1	183,709	17,974	165,735	-
31 DEC 1979	181,902	64	181,838	21	1	181,816	18,018	163,798	-
31 JAN 1980	182,020	64	181,956	21	1	181,934	17,926	164,008	-
28 FEB 1980	182,423	65	182,358	21	1	182,336	18,148	164,188	-
31 MAR 1980	182,395	67	182,328	21	1	182,306	18,104	164,202	-
30 APR 1980	181,389	67	181,322	21	1	181,300	18,061	163,239	-
31 MAY 1980	181,199	67	181,132	20	1	181,111	18,179	162,932	-
30 JUN 1980	184,618	67	184,551	19	1	184,531	18,449	166,082	-
31 JUL 1980	186,107	67	186,040	23	1	186,016	18,223	167,793	-
31 AUG 1980	187,714	67	187,647	23	1	187,623	18,313	169,310	-
30 SEP 1980	188,536	67	188,469	24	1	188,444	18,174	170,270	-

A/ MARINE CORPS RESERVE PERSONNEL ON ACTIVE DUTY UNDER PROVISIONS OF SEC. 265, TITLE 10, U.S. CODE PAID FROM THE MARINE CORPS RESERVE PERSONNEL APPROPRIATION.
February through August revised.

DEPARTMENT OF DEFENSE
WASHINGTON HEADQUARTERS SERVICES
DIRECTORATE FOR INFORMATION
OPERATIONS AND REPORTS

TABLE P23.71

DEPARTMENT OF DEFENSE
AIR FORCE ACTIVE DUTY MILITARY PERSONNEL

REPORTED STRENGTH, AND ADJUSTMENTS TO REPORTED STRENGTH TO DERIVE "DIRECT PROGRAM STRENGTH" CHARGEABLE TO APPROPRIATION "MILITARY PERSONNEL, AIR FORCE"

DATE	REPORTED STRENGTH	(LESS) ANG/AFR	TOTAL PROGRAM STRENGTH	(LESS) REIMBURSABLES	DIRECT PROGRAM STRENGTH CHARGEABLE TO APPROP. "MILITARY PERSONNEL, AIR FORCE"	TOTAL	OFFICERS	ENLISTED	OFFICER	ENLISTED	USAF & AVCADS
31 OCT 1979	559,216	233	558,983								
30 NOV 1979	558,462	236	558,226								
31 DEC 1979	556,861	234	556,627								
31 JAN 1980	557,516	243	557,273								
28 FEB 1980	557,883	236	557,647								
31 MAR 1980	558,133	237	557,896								
30 APR 1980	556,935	235	556,700								
31 MAY 1980	556,310	231	556,079								
30 JUN 1980	558,608	235	558,373								
31 JUL 1980	559,772	234	559,538								
31 AUG 1980	559,282	234	559,048								
30 SEP 1980	558,264	295*	557,969								

*Includes 43 enlisted personnel.

TABLE P25.6

DEPARTMENT OF DEFENSE
WOMEN MILITARY PERSONNEL ON ACTIVE DUTY, OFFICERS, AND ENLISTED BY SERVICE

DATE	TOTAL DOD			ARMY			NAVY			MARINE CORPS			AIR FORCE		
	TOTAL	OFF	ENL AND OFF CAND	TOTAL	OFF	ENL	TOTAL	OFF	ENL AND OFF CAND	TOTAL	OFF	ENL	TOTAL	OFF	ENL
31 OCT 79	153,265	19,050	134,215	63,806	6,961	56,845	29,855	4,378	25,477	5,922	456	5,466	53,682	7,255	46,427
30 NOV 79	155,902	19,209	136,693	64,668	6,873	57,795	30,366	4,432	25,934	6,026	456	5,570	54,842	7,448	47,394
31 DEC 79	156,851	19,241	137,610	64,425	6,882	57,543	31,077	4,410	26,667	6,057	464	5,593	55,292	7,485	47,807
31 JAN 80	159,231	19,470	139,761	65,503	6,907	58,596	31,610	4,488	27,122	6,143	482	5,661	55,975	7,593	48,382
28 FEB 80	161,163	19,588	141,575	65,721	6,894	58,827	32,368	4,529	27,839	6,198	481	5,717	56,876	7,684	49,192
31 MAR 80	162,201	19,806	142,395	65,501	6,982	58,519	32,801	4,562	28,239	6,248	475	5,773	57,651	7,787	49,864
30 APR 80	162,363	19,862	142,501	65,034	6,948	58,086	33,257	4,576	28,681	6,288	474	5,814	57,784	7,864	49,920
31 MAY 80	163,306	20,388	142,918	64,736	7,213	57,523	33,794	4,639	29,155	6,309	483	5,826	58,467	8,053	50,414
30 JUN 80	164,892	20,536	144,356	65,037	7,262	57,775	33,942	4,671	29,271	6,463	501	5,962	59,450	8,102	51,348
31 JUL 80	166,803	20,980	145,823	66,161	7,468	58,693	34,135	4,700	29,435	6,477	497	5,980	60,030	8,315	51,715
31 AUG 80	169,424	21,222	148,202	67,713	7,535	60,178	34,732	4,752	29,980	6,702	492	6,210	60,277	8,443	51,834
30 SEP 80	171,418	21,466	149,952	69,338	7,609	61,729	34,980	4,877	30,103	6,706	487	6,219	60,394	8,493	51,901

DEPARTMENT OF DEFENSE
WASHINGTON HEADQUARTERS SERVICES
DIRECTORATE FOR INFORMATION
OPERATIONS AND REPORTS

TAB-E P26.0

DEPARTMENT OF DEFENSE
MILITARY PERSONNEL ON ACTIVE DUTY BY GRADE IN WHICH SERVING A/

SEPTEMBER 30, 1980

RANK/GRADE	ARMY	NAVY	MARINE CORPS	AIR FORCE	TOTAL DOD
GENERAL OF ARMY - FLEET ADMIRAL	1	-	-	-	1
GENERAL - ADMIRAL	32	8	2	13	55
LT GENERAL - VICE ADMIRAL	113	31	7	39	190
MAJ GENERAL - REAR ADMIRAL (U)	436	91	24	121	672
BRIG GENERAL - REAR ADMIRAL (L)	559	129	33	181	802
COLONEL - CAPTAIN	4,613	3,601	585	5,139	13,819
LIEUTENANT COL - COMMANDER	11,159	7,534	1,496	12,644	29,232
MAJOR - LT COMMANDER	15,917	12,256	2,858	18,163	31,131
CAPTAIN - LIEUTENANT	28,553	17,145	4,788	35,292	65,778
1ST LIEUTENANT - LIEUTENANT (JG)	11,289	9,691	4,371	10,456	25,807
2ND LIEUTENANT - ENSIGN	13,376	9,552	2,812	15,601	36,331
CHIEF WARRANT OFFICER W-4	1,403	535	184	-	2,122
CHIEF WARRANT OFFICER W-3	3,978	619	52	-	4,649
CHIEF WARRANT OFFICER W-2	5,142	1,866	512	-	7,520
WARRANT OFFICER W-1	2,855	-	474	-	3,329
TOTAL OFFICERS	98,717	63,058	18,198	97,649	277,622
E-9	3,745	3,219	1,224	4,574	12,762
E-8	13,190	8,374	2,783	9,080	33,427
E-7	45,417	29,181	8,416	33,304	116,318
E-6	74,286	66,442	12,885	51,827	205,440
E-5	119,439	81,072	22,347	99,160	322,018
E-4	168,255	98,697	25,866	103,462	396,280
E-3	99,127	71,356	43,705	98,162	312,350
E-2	65,920	52,084	27,641	28,461	174,106
E-1	84,565	49,144	25,404	27,879	186,992
TOTAL ENLISTED	673,944	459,569	170,271	455,909	1,759,693
CADETS & MIDSHIPMEN	4,375	4,526	-	4,411	13,312
GRAND TOTAL	777,036	527,153	188,469	557,969	2,050,627

A/ INCLUDES REIMBURSABLE ACTIVE DUTY
MILITARY PAY STRENGTHS AND ACTIVE
DUTY MILITARY PERSONNEL PAID FROM
CIVIL FUNCTIONS, RESERVE, AND
NATIONAL GUARD APPROPRIATIONS.

DEPARTMENT OF DEFENSE
WASHINGTON HEADQUARTERS SERVICES
DIRECTORATE FOR INFORMATION
OPERATIONS AND REPORTS

TAB.E P26.02

DEPARTMENT OF DEFENSE
FEMALE MILITARY PERSONNEL ON ACTIVE DUTY BY GRADE IN WHICH SERVING A/

SEPTEMBER 30, 1980

RANK/GRADE		TOTAL - DOD	ARMY	NAVY	MARINE CORPS	AIR FORCE
GENERAL OF ARMY - FLEET ADMIRAL	-	-	-	-	-	-
GENERAL - ADMIRAL	-	-	-	-	-	-
LT GENERAL - VICE ADMIRAL	-	-	-	-	-	-
MAJ GENERAL - REAR ADMIRAL (U)	3	3	1	1	-	1
BRIG GENERAL - REAR ADMIRAL (L)	4	4	1	1	-	2
COLONEL - CAPTAIN	235	235	90	79	6	60
LIEUTENANT COL - COMMANDER	831	831	267	229	21	314
MAJOR - LT COMMANDER	2,172	2,172	696	701	38	737
CAPTAIN - LIEUTENANT	7,681	7,681	3,075	1,593	122	2,891
1ST LIEUTENANT - LIEUTENANT (JG)	4,629	4,629	1,356	1,215	138	1,920
2ND LIEUTENANT - ENSIGN	5,752	5,752	2,010	1,040	134	2,568
CHIEF WARRANT OFFICER W-4	7	7	2	2	3	-
CHIEF WARRANT OFFICER W-3	11	11	6	3	2	-
CHIEF WARRANT OFFICER W-2	70	70	43	13	14	-
WARRANT OFFICER W-1	71	71	62	-	9	-
TOTAL OFFICERS		21,456	7,609	4,877	487	8,493
E-9	41	41	20	3	6	12
E-8	157	157	87	29	23	28
E-7	899	899	552	142	94	111
E-6	4,111	4,111	2,190	1,265	198	458
E-5	24,194	24,194	11,170	4,780	905	7,339
E-4	41,489	41,489	17,777	7,311	1,230	15,171
E-3	38,021	38,021	12,112	6,731	1,710	17,468
E-2	20,203	20,203	7,582	5,306	1,242	6,073
E-1	19,648	19,648	9,861	4,239	811	4,737
TOTAL ENLISTED		148,773	61,351	29,806	6,219	51,397
CADETS & MIDSHIPMEN	1,179	1,179	378	297	-	504
GRAND TOTAL		171,418	69,338	34,980	6,706	60,394

A/ INCLUDES REIMBURSABLE ACTIVE DUTY
MILITARY PAY STRENGTHS AND ACTIVE
DUTY MILITARY PERSONNEL PAID FROM
CIVIL FUNCTIONS, RESERVE, AND
NATIONAL GUARD APPROPRIATIONS.

DEPARTMENT OF DEFENSE
WASHINGTON HEADQUARTERS SERVICES
DIRECTORATE FOR INFORMATION
OPERATIONS AND REPORTS

TABLE P26.04

DEPARTMENT OF DEFENSE
MILITARY PERSONNEL ON ACTIVE DUTY BY GRADE IN WHICH SERVING

REGULAR A/

SEPTEMBER 30, 1980

RANK/GRADE	TOTAL DOD	ARMY	NAVY	MARINE CORPS	AIR FORCE
GENERAL OF ARMY - FLEET ADMIRAL	1	1	-	-	-
GENERAL - ADMIRAL	32	9	8	2	13
LT GENERAL - VICE ADMIRAL	112	35	31	7	39
MAJ GENERAL - REAR ADMIRAL (U)	401	168	90	23	120
BRIG GENERAL - REAR ADMIRAL (L)	556	214	128	33	181
COLONEL - CAPTAIN	13,267	4,314	3,435	564	4,954
LIEUTENANT COL - COMMANDER	29,134	9,174	6,979	1,477	11,504
MAJOR - LT COMMANDER	36,799	9,533	10,826	2,769	13,671
CAPTAIN - LIEUTENANT	48,949	11,648	12,523	4,144	20,634
1ST LIEUTENANT - LIEUTENANT (JG)	14,516	3,942	5,814	2,343	2,417
2ND LIEUTENANT - ENSIGN	12,118	4,952	4,535	869	1,762
CHIEF WARRANT OFFICER W-4	1,666	959	528	179	-
CHIEF WARRANT OFFICER W-3	2,592	1,925	617	50	-
CHIEF WARRANT OFFICER W-2	3,463	1,113	1,843	507	-
WARRANT OFFICER W-1	485	13	-	472	-
TOTAL OFFICERS	164,091	48,000	47,357	19,439	55,295
E-9	12,632	3,744	3,100	1,222	4,566
E-8	33,053	13,184	8,026	2,769	9,074
E-7	115,015	45,401	27,945	8,385	33,284
E-6	202,256	74,262	63,310	12,861	51,823
E-5	317,160	119,408	76,321	22,276	99,155
E-4	387,668	167,658	90,772	25,852	103,386
E-3	300,757	97,564	61,508	43,667	98,018
E-2	160,534	64,849	39,682	27,550	28,453
E-1	176,612	84,031	39,595	25,296	27,690
TOTAL ENLISTED	1,705,687	670,101	410,259	169,878	455,449
REGULAR TOTAL	1,869,778	718,101	457,616	183,317	510,744

A/ REGULAR PLUS RETIRED REGULAR
OFFICERS ON ACTIVE DUTY.

DEPARTMENT OF DEFENSE
WASHINGTON HEADQUARTERS SERVICES
DIRECTORATE FOR INFORMATION
OPERATIONS AND REPORTS

TABLE P26.05

DEPARTMENT OF DEFENSE
MILITARY PERSONNEL ON ACTIVE DUTY BY GRADE IN WHICH SERVING

RESERVE A/

SEPTEMBER 30, 1980

RANK/GRADE	TOTAL - DOD	ARMY	NAVY	MARINE CORPS	AIR FORCE
GENERAL OF ARMY - FLEET ADMIRAL	-	-	-	-	-
GENERAL - ADMIRAL	-	-	-	-	-
LT GENERAL - VICE ADMIRAL	1	1	-	-	-
MAJ GENERAL - REAR ADMIRAL (U)	5	2	1	1	1
BRIG GENERAL - REAR ADMIRAL (L)	3	2	1	-	-
COLONEL - CAPTAIN	671	299	166	21	185
LIEUTENANT COL - COMMANDER	3,699	1,985	555	19	1,140
MAJOR - LT COMMANDER	12,395	6,384	1,430	89	4,492
CAPTAIN - LIEUTENANT (JG)	36,829	16,905	4,622	644	14,658
1ST LIEUTENANT - LIEUTENANT	21,231	7,347	3,877	2,028	8,039
2ND LIEUTENANT - ENSIGN	29,223	8,424	5,017	1,943	13,839
CHIEF WARRANT OFFICER W-4	456	444	7	5	-
CHIEF WARRANT OFFICER W-3	2,057	2,053	2	2	-
CHIEF WARRANT OFFICER W-2	4,057	4,029	23	5	-
WARRANT OFFICER W-1	2,844	2,842	-	2	-
TOTAL OFFICERS	113,531	50,717	15,701	4,759	42,354
E-9	130	1	119	2	8
E-8	374	6	348	14	6
E-7	1,303	16	1,236	31	20
E-6	3,184	24	3,132	24	4
E-5	4,858	31	4,751	71	5
E-4	8,612	597	7,925	14	76
E-3	11,593	1,563	9,848	38	144
E-2	13,572	1,071	12,402	91	8
E-1	10,380	534	9,549	108	189
TOTAL ENLISTED	54,006	3,843	49,310	393	460
RESERVE TOTAL	167,537	54,560	65,011	5,152	42,814

A/ INCLUDES RESERVE, NATIONAL GUARD,
AUS, AND AFUS OFFICERS ON ACTIVE
DUTY.

DEPARTMENT OF DEFENSE
WASHINGTON HEADQUARTERS SERVICES
DIRECTORATE FOR INFORMATION
OPERATIONS AND REPORTS

TABLE P27.1

DEPARTMENT OF DEFENSE
SUMMARY OF ENLISTED PERSONNEL PROCUREMENT
FISCAL YEAR 1980

	OCT 1979	NOV 1979	DEC 1979	JAN 1980	FEB 1980	MAR 1980
TOTAL DEPARTMENT OF DEFENSE	52,500	46,109	33,431	53,224	48,466	45,694
INDUCTIONS	-	-	-	-	-	-
FIRST ENLISTMENTS	31,154	26,620	17,681	32,445	28,649	25,512
IMMEDIATE REENLISTMENTS	16,587	15,396	13,635	15,393	15,072	15,267
OTHER REENLISTMENTS	2,140	1,899	1,507	2,500	2,238	2,122
RESERVES TO ACTIVE DUTY A/	2,619	2,234	608	2,886	2,507	2,793
ARMY	26,059	22,055	13,723	26,015	21,669	21,839
INDUCTIONS	-	-	-	-	-	-
FIRST ENLISTMENTS	16,528	13,447	6,260	15,852	13,055	11,265
IMMEDIATE REENLISTMENTS	7,220	6,963	6,483	7,786	7,017	8,545
OTHER REENLISTMENTS	1,496	1,115	675	1,459	1,145	1,070
RESERVES TO ACTIVE DUTY	815	530	305	918	452	959
NAVY	9,997	9,525	6,743	11,630	11,719	10,563
INDUCTIONS	-	-	-	-	-	-
FIRST ENLISTMENTS	5,448	4,912	4,420	6,691	6,209	5,664
IMMEDIATE REENLISTMENTS	2,468	2,491	1,712	2,504	3,011	2,639
OTHER REENLISTMENTS	329	462	394	549	522	517
RESERVES TO ACTIVE DUTY	1,752	1,660	217	1,886	1,977	1,743
MARINE CORPS	4,596	3,897	3,252	4,340	4,340	3,899
INDUCTIONS	-	-	-	-	-	-
FIRST ENLISTMENTS	2,796	2,730	1,869	3,151	3,151	2,624
IMMEDIATE REENLISTMENTS	1,652	995	1,013	878	878	1,003
OTHER REENLISTMENTS	102	132	288	239	239	187
RESERVES TO ACTIVE DUTY	46	40	82	72	72	85
AIR FORCE	11,848	10,632	9,713	11,239	10,738	9,393
INDUCTIONS	-	-	-	-	-	-
FIRST ENLISTMENTS	6,382	5,531	5,132	6,751	6,234	5,959
IMMEDIATE REENLISTMENTS	5,247	4,907	4,427	4,225	4,166	3,080
OTHER REENLISTMENTS	213	190	150	253	332	348
RESERVES TO ACTIVE DUTY	6	4	4	10	6	6

A/ INCLUDES NATIONAL GUARD.

DEPARTMENT OF DEFENSE
WASHINGTON HEADQUARTERS SERVICES
DIRECTORATE FOR INFORMATION
OPERATIONS AND REPORTS

TABLE P27.1

DEPARTMENT OF DEFENSE
SUMMARY OF ENLISTED PERSONNEL PROCUREMENT
FISCAL YEAR 1980

	APR 1980	MAY 1980	JUN 1980	JUL 1980	AUG 1980	SEP 1980
TOTAL DEPARTMENT OF DEFENSE	40,455	44,712	52,940	58,273	57,597	48,400
INDUCTIONS	-	-	-	-	-	-
FIRST ENLISTMENTS	20,857	24,843	35,185	38,575	39,994	34,115
IMMEDIATE REENLISTMENTS	15,863	15,637	14,468	15,758	14,069	11,832
OTHER REENLISTMENTS	2,013	2,285	2,049	2,420	2,258	1,358
RESERVES TO ACTIVE DUTY A/	1,722	1,947	1,238	1,520	1,276	1,095
ARMY	18,661	19,859	22,372	27,765	23,039	21,803
INDUCTIONS	-	-	-	-	-	-
FIRST ENLISTMENTS	9,474	11,191	14,442	19,644	16,146	15,781
IMMEDIATE REENLISTMENTS	7,609	7,257	6,675	6,443	5,741	5,219
OTHER REENLISTMENTS	1,134	1,224	1,148	1,463	1,071	649
RESERVES TO ACTIVE DUTY	444	187	107	215	81	154
NAVY	9,013	11,564	10,894	9,916	15,191	10,383
INDUCTIONS	-	-	-	-	-	-
FIRST ENLISTMENTS	4,507	6,499	7,255	5,256	10,947	7,166
IMMEDIATE REENLISTMENTS	2,693	2,763	2,172	3,198	2,426	1,832
OTHER REENLISTMENTS	474	624	451	456	730	501
RESERVES TO ACTIVE DUTY	1,239	1,678	1,016	1,006	1,088	884
MARINE CORPS	3,112	3,149	7,832	7,286	6,673	5,401
INDUCTIONS	-	-	-	-	-	-
FIRST ENLISTMENTS	2,201	2,010	6,321	5,672	5,159	4,330
IMMEDIATE REENLISTMENTS	695	821	1,171	1,214	1,096	842
OTHER REENLISTMENTS	177	237	226	292	320	177
RESERVES TO ACTIVE DUTY	39	81	114	108	98	52
AIR FORCE	9,669	10,140	11,842	13,306	12,694	10,813
INDUCTIONS	-	-	-	-	-	-
FIRST ENLISTMENTS	4,575	5,143	7,167	8,003	7,742	6,838
IMMEDIATE REENLISTMENTS	4,866	4,796	4,450	4,903	4,806	3,939
OTHER REENLISTMENTS	228	200	224	209	137	31
RESERVES TO ACTIVE DUTY	-	1	1	191	9	5

A/ INCLUDES NATIONAL GUARD.

DEPARTMENT OF DEFENSE
WASHINGTON HEADQUARTERS SERVICES
DIRECTORATE FOR INFORMATION
OPERATIONS AND REPORTS

TABLE P27.21

DEPARTMENT OF DEFENSE
ARMY ENLISTED PERSONNEL PROCUREMENT
FISCAL YEAR 1980

	OCT 1979	NOV 1979	DEC 1979	JAN 1980	FEB 1980	MAR 1980
TOTAL	26,059	22,055	13,723	26,015	21,669	21,839
REGULAR ENL. AND REENL. - TOTAL	25,244	21,525	13,418	25,097	21,217	20,880
FIRST ENLISTMENTS	16,528	13,447	6,260	15,852	13,055	11,265
REENLISTMENTS - TOTAL	8,716	8,078	7,158	9,245	8,162	9,615
IMMEDIATE REENLISTMENTS	7,220	6,963	6,483	7,786	7,017	8,545
FORMER REGULAR	7,170	6,895	6,445	7,731	6,971	8,484
FORMER RESERVE & N.G.	50	68	38	55	46	61
FORMER INDUCTEE	-	-	-	-	-	-
REENL. OTHER THAN IMMEDIATE	1,496	1,115	675	1,459	1,145	1,070
WITHIN 2-90 DAYS AFTER SEPARATION	252	169	118	186	130	108
FORMER REGULAR	85	47	28	48	35	30
FORMER RESERVE & N.G.	139	102	83	126	73	60
FORMER INDUCTEE	10	10	4	12	13	16
FORMER OFFICER	18	10	3	-	9	2
OVER 90 DAYS AFTER SEPARATION	1,244	946	557	1,273	1,015	962
INDUCTIONS	-	-	-	-	-	-
RESERVES AND N.G. CALLS	815	530	305	918	452	959

DEPARTMENT OF DEFENSE
WASHINGTON HEADQUARTERS SERVICES
DIRECTORATE FOR INFORMATION
OPERATIONS AND REPORTS

TABLE P27.21

DEPARTMENT OF DEFENSE
ARMY ENLISTED PERSONNEL PROCUREMENT
FISCAL YEAR 1980

	APR 1980	MAY 1980	JUN 1980	JUL 1980	AUG 1980	SEP 1980
TOTAL	18,661	19,859	22,372	27,765	23,039	21,803
REGULAR ENL. AND REENL. - TOTAL	18,217	19,672	22,265	27,550	22,958	21,649
FIRST ENLISTMENTS	9,474	11,191	14,442	19,644	16,146	15,781
REENLISTMENTS - TOTAL	8,743	8,481	7,823	7,906	6,812	5,868
IMMEDIATE REENLISTMENTS	7,609	7,257	6,675	6,443	5,741	5,219
FORMER REGULAR FORMER RESERVE & N.G. FORMER INDUCTEE	7,546 63 -	7,180 77 -	6,602 73 -	6,352 91 -	5,662 79 -	5,148 71 -
REENL. OTHER THAN IMMEDIATE	1,134	1,224	1,148	1,463	1,071	649
WITHIN 2-90 DAYS AFTER SEPARATION	110	130	118	150	109	69
FORMER REGULAR FORMER RESERVE & N.G. FORMER INDUCTEE FORMER OFFICER	26 83 18 3	26 77 23 4	28 78 12 -	38 87 25 -	43 61 5 -	26 39 4 -
OVER 90 DAYS AFTER SEPARATION	1,024	1,094	1,030	1,313	962	580
INDUCTIONS	-	-	-	-	-	-
RESERVES AND N.G. CALLS	444	187	107	215	81	154

DEPARTMENT OF DEFENSE
WASHINGTON HEADQUARTERS SERVICES
DIRECTORATE FOR INFORMATION
OPERATIONS AND REPORTS

TABLE P27.22

DEPARTMENT OF DEFENSE
NAVY ENLISTED PERSONNEL PROCUREMENT
FISCAL YEAR 1980

	OCT 1979	NOV 1979	DEC 1979	JAN 1980	FEB 1980	MAR 1980
TOTAL	9,997	9,525	6,743	11,630	11,719	10,563
REGULAR ENL. AND REENL. - TOTAL	8,245	7,865	6,526	9,744	9,742	8,820
FIRST ENLISTMENTS	5,448	4,912	4,420	6,691	6,209	5,664
REENLISTMENTS - TOTAL	2,797	2,953	2,106	3,053	3,533	3,156
IMMEDIATE REENLISTMENTS	2,468	2,491	1,712	2,504	3,011	2,639
FORMER REGULAR	2,380	2,406	1,679	2,372	2,932	2,470
FORMER RESERVE	88	85	33	132	79	169
REENL. OTHER THAN IMMEDIATE	329	462	394	549	522	517
WITHIN 2-90 DAYS AFTER SEPARATION	71	94	63	100	86	90
FORMER REGULAR	71	94	63	100	86	90
FORMER RESERVE	-	-	-	-	-	-
OVER 90 DAYS AFTER SEPARATION	258	368	331	449	436	427
INDUCTIONS	-	-	-	-	-	-
RESERVES TO ACTIVE DUTY	1,752	1,660	217	1,686	1,977	1,743
FIRST ENLISTMENTS	252	286	155	272	278	203
REENLISTMENTS	83	82	49	82	89	80
REPORTED TO ACTIVE DUTY	1,417	1,292	13	1,532	1,610	1,460

DEPARTMENT OF DEFENSE
WASHINGTON HEADQUARTERS SERVICES
DIRECTORATE FOR INFORMATION
OPERATIONS AND REPORTS

TABLE P27.22

DEPARTMENT OF DEFENSE
NAVY ENLISTED PERSONNEL PROCUREMENT
FISCAL YEAR 1980

	APR 1980	MAY 1980	JUN 1980	JUL 1980	AUG 1980	SEP 1980
TOTAL	9,013	11,564	10,894	9,916	15,191	10,383
REGULAR ENL. AND REENL. - TOTAL	7,774	9,886	9,878	8,910	14,103	9,499
FIRST ENLISTMENTS	4,607	6,499	7,255	5,256	10,947	7,166
REENLISTMENTS - TOTAL	3,167	3,387	2,623	3,654	3,156	2,333
IMMEDIATE REENLISTMENTS	2,693	2,763	2,172	3,198	2,426	1,832
FORMER REGULAR FORMER RESERVE	2,571 122	2,649 114	2,105 67	3,108 90	2,305 121	1,711 121
REENL. OTHER THAN IMMEDIATE	474	624	451	456	730	501
WITHIN 2-90 DAYS AFTER SEPARATION	72	76	69	79	146	94
FORMER REGULAR FORMER RESERVE	72	76	69	79	146	94
OVER 90 DAYS AFTER SEPARATION	402	548	382	377	584	407
INDUCTIONS	-	-	-	-	-	-
RESERVES TO ACTIVE DUTY	1,239	1,678	1,016	1,006	1,088	884
FIRST ENLISTMENTS REENLISTMENTS REPORTED TO ACTIVE DUTY	123 74 1,042	214 87 1,377	99 52 865	93 110 803	97 87 904	94 95 695

DEPARTMENT OF DEFENSE
WASHINGTON HEADQUARTERS SERVICES
DIRECTORATE FOR INFORMATION
OPERATIONS AND REPORTS

TABLE P27.23

DEPARTMENT OF DEFENSE
MARINE CORPS ENLISTED PERSONNEL PROCUREMENT
FISCAL YEAR 1980

	OCT 1979	NOV 1979	DEC 1979	JAN 1980	FEB 1980	MAR 1980
TOTAL	4,596	3,897	3,252	4,340	4,340	3,899
REGULAR ENL. AND REENL. - TOTAL	4,550	3,857	3,170	4,268	4,268	3,814
FIRST ENLISTMENTS	2,796	2,730	1,869	3,151	3,151	2,624
REENLISTMENTS - TOTAL	1,754	1,127	1,301	1,117	1,117	1,190
IMMEDIATE REENLISTMENTS	1,652	995	1,013	878	878	1,003
FORMER REGULAR A/ FORMER RESERVE FORMER INDUCTEE	1,606 46 -	966 29 -	968 45 -	834 44 -	834 44 -	971 32 -
REENL. OTHER THAN IMMEDIATE	102	132	288	239	239	187
WITHIN 2-90 DAYS AFTER SEPARATION	1	1	13	3	3	-
FORMER REGULAR FORMER RESERVE FORMER INDUCTEE	1 - -	1 - -	5 8 -	3 - -	3 - -	- - -
OVER 90 DAYS AFTER SEPARATION B/	101	131	275	236	236	187
INDUCTIONS	-	-	-	-	-	-
RESERVES TO ACTIVE DUTY	46	40	82	72	72	85
FIRST ENLISTMENTS REENLISTMENTS REPORTED TO ACTIVE DUTY	- - 46	- - 40	- - 82	- - 72	- - 72	- - 85

A/ INCLUDES EXTENSIONS FOR WHICH REENLISTMENT BONUS IS PAID.
B/ INCLUDES ENLISTMENTS OF FORMER OFFICERS.

DEPARTMENT OF DEFENSE
WASHINGTON HEADQUARTERS SERVICES
DIRECTORATE FOR INFORMATION
OPERATIONS AND REPORTS

TABLE P27.23

DEPARTMENT OF DEFENSE
MARINE CORPS ENLISTED PERSONNEL PROCUREMENT
FISCAL YEAR 1980

	APR 1980	MAY 1980	JUN 1980	JUL 1980	AUG 1980	SEP 1980
TOTAL	3,112	3,149	7,832	7,286	6,673	5,401
REGULAR ENL. AND REENL. - TOTAL	3,073	3,068	7,718	7,178	6,575	5,349
FIRST ENLISTMENTS	2,201	2,010	6,321	5,672	5,159	4,330
REENLISTMENTS - TOTAL	872	1,058	1,397	1,506	1,416	1,019
IMMEDIATE REENLISTMENTS	695	821	1,171	1,214	1,096	842
FORMER REGULAR A/ FORMER RESERVE FORMER INDUCTEE	671 24 -	790 31 -	1,123 48 -	1,151 63 -	1,041 55 -	800 42 -
REENL. OTHER THAN IMMEDIATE	177	237	226	292	320	177
WITHIN 2-90 DAYS AFTER SEPARATION	-	-	-	-	30	8
FORMER REGULAR FORMER RESERVE FORMER INDUCTEE	- - -	- - -	- - -	- - -	30 - -	7 1 -
OVER 90 DAYS AFTER SEPARATION B/	177	237	226	292	290	169
INDUCTIONS	-	-	-	-	-	-
RESERVES TO ACTIVE DUTY	39	81	114	108	98	52
FIRST ENLISTMENTS REENLISTMENTS REPORTED TO ACTIVE DUTY	- - 39	- - 81	- - 114	- - 108	- - 98	- - 52

A/ INCLUDES EXTENSIONS FOR WHICH REENLISTMENT BONUS IS PAID.
B/ INCLUDES ENLISTMENTS OF FORMER OFFICERS.

TABLE P27.24

DEPARTMENT OF DEFENSE
AIR FORCE ENLISTED PERSONNEL PROCUREMENT
FISCAL YEAR 1980

	OCT 1979	NOV 1979	DEC 1979	JAN 1980	FEB 1980	MAR 1980
TOTAL	11,848	10,632	9,713	11,239	10,738	9,393
REGULAR ENL. AND REENL. - TOTAL	11,842	10,628	9,709	11,229	10,732	9,387
FIRST ENLISTMENTS	6,382	5,531	5,132	6,751	6,234	5,959
REENLISTMENTS - TOTAL	5,460	5,097	4,577	4,478	4,498	3,428
IMMEDIATE REENLISTMENTS	5,247	4,907	4,427	4,225	4,166	3,080
FORMER REGULAR FORMER RESERVE & N.G.	5,247	4,907	4,426	4,225	4,165	3,079
REENL. OTHER THAN IMMEDIATE	213	190	150	253	332	348
WITHIN 2-90 DAYS AFTER SEPARATION	-	-	-	-	-	-
FORMER REGULAR FORMER RESERVE & N.G.	-	-	-	-	-	-
OVER 90 DAYS AFTER SEPARATION A/	213	190	150	253	332	348
INDUCTIONS	-	-	-	-	-	-
RESERVES & N.G. TO ACTIVE DUTY	6	4	4	10	6	6

A/ INCLUDES ENLISTMENTS OF FORMER COMMISSIONED AND WARRANT OFFICERS.

DEPARTMENT OF DEFENSE
WASHINGTON HEADQUARTERS SERVICES
DIRECTORATE FOR INFORMATION
OPERATIONS AND REPORTS

TABLE P27.24

DEPARTMENT OF DEFENSE
AIR FORCE ENLISTED PERSONNEL PROCUREMENT
FISCAL YEAR 1980

	APR 1980	MAY 1980	JUN 1980	JUL 1980	AUG 1980	SEP 1980
TOTAL	9,669	10,140	11,842	13,306	12,694	10,813
REGULAR ENL. AND REENL. - TOTAL	9,669	10,139	11,841	13,115	12,685	10,808
FIRST ENLISTMENTS	4,575	5,143	7,167	8,003	7,742	6,838
REENLISTMENTS - TOTAL	5,094	4,996	4,674	5,112	4,943	3,970
IMMEDIATE REENLISTMENTS	4,866	4,796	4,450	4,903	4,806	3,939
FORMER REGULAR FORMER RESERVE & N.G.	4,864 2	4,794 2	4,450	4,903	4,806	3,939
REENL. OTHER THAN IMMEDIATE	228	200	224	209	137	31
WITHIN 2-90 DAYS AFTER SEPARATION	-	-	-	-	-	-
FORMER REGULAR FORMER RESERVE & N.G.	-	-	-	-	-	-
OVER 90 DAYS AFTER SEPARATION A/	228	200	224	209	137	31
INDUCTIONS	-	-	-	-	-	-
RESERVES & N.G. TO ACTIVE DUTY	-	1	1	191	9	5

A/ INCLUDES ENLISTMENTS OF FORMER COMMISSIONED AND WARRANT OFFICERS.

DEPARTMENT OF DEFENSE
WASHINGTON HEADQUARTERS SERVICES
DIRECTORATE FOR INFORMATION
OPERATIONS AND REPORTS

TABLE P29 20-29.34

DEPARTMENT OF DEFENSE
REENLISTMENT RATES BY SERVICE

	A/ "UNADJUSTED" REENLISTMENT RATES FOR TOTAL REGULARS					B/ "ADJUSTED" REENLISTMENT RATES FOR TOTAL REGULARS					REENLISTMENT RATE ARMY INDUCTEES	
	TOTAL DOD	ARMY	NAVY	MARINE CORPS	AIR FORCE	TOTAL DOD	ARMY	NAVY	MARINE CORPS	AIR FORCE	UN- AD- JUSTED	AD- JUSTED
FY 1979												
ELIGIBLES	343,032	144,849	74,818	37,016	86,349	322,679	134,924	73,598	36,668	77,489	-	-
REENLISTMENTS	181,338	81,443	35,367	12,398	52,130	162,994	71,505	35,488	12,047	43,954	-	-
REENLISTMENT RATE	52.9%	56.2%	47.3%	33.5%	60.4%	50.5%	53.0%	48.2%	32.9%	56.7%	-	-
FY 1980												
ELIGIBLES	343,425	133,010	86,251	35,032	89,132	334,952	136,721	83,581	34,928	79,722	-	-
REENLISTMENTS	190,260	82,793	41,556	12,388	53,523	183,494	86,494	40,500	12,237	44,263	-	-
REENLISTMENT RATE	55.4%	62.2%	48.2%	35.4%	60.0%	54.8%	63.3%	48.5%	35.0%	55.5%	-	-

TABLE P29.20-29.34

DEPARTMENT OF DEFENSE
REENLISTMENT RATES BY SERVICE

	A/ "UNADJUSTED" REENLISTMENT RATES FOR FIRST-TERM REGULARS				B/ "ADJUSTED" REENLISTMENT RATES FOR FIRST-TERM REGULARS					
	TOTAL DOD	ARMY	NAVY	MARINE CORPS	AIR FORCE	TOTAL DOD	ARMY	NAVY	MARINE CORPS	AIR FORCE
FY 1979										
ELIGIBLES	171,034	62,909	45,204	21,029	41,892	159,988	59,604	44,308	20,925	35,151
REENLISTMENTS	64,001	27,027	16,949	4,107	15,918	54,369	23,714	17,080	4,010	9,565
REENLISTMENT RATE	37.4%	43.0%	37.5%	19.5%	38.0%	34.0%	39.8%	38.5%	19.2%	27.2%
FY 1980										
ELIGIBLES	165,525	50,288	53,670	19,364	42,203	161,232	52,231	51,976	19,575	37,450
REENLISTMENTS	64,762	25,434	19,721	4,493	15,114	61,610	27,370	19,138	4,672	10,430
REENLISTMENT RATE	39.1%	50.6%	36.7%	23.2%	35.8%	38.2%	52.4%	36.8%	23.9%	27.9%

TABLE P29.20-29.34

DEPARTMENT OF DEFENSE
REENLISTMENT RATES BY SERVICE

	A/ "UNADJUSTED" REENLISTMENT RATES FOR CAREER REGULARS				B/ "ADJUSTED" REENLISTMENT RATES FOR CAREER REGULARS					
	TOTAL DOD	ARMY	NAVY	MARINE CORPS	AIR FORCE	TOTAL DOD	ARMY	NAVY	MARINE CORPS	AIR FORCE
FY 1979										
ELIGIBLES	171,998	81,940	29,614	15,987	44,457	162,691	75,320	29,290	15,743	42,338
REENLISTMENTS	117,337	54,416	18,418	8,291	36,212	108,625	47,791	18,408	8,037	34,389
REENLISTMENT RATE	68.2%	66.4%	62.2%	51.9%	81.5%	66.8%	63.5%	62.8%	51.1%	81.2%
FY 1980										
ELIGIBLES	177,900	82,722	32,581	15,668	46,929	173,720	84,490	31,605	15,353	42,272
REENLISTMENTS	125,498	57,359	21,835	7,895	38,409	121,884	59,124	21,362	7,565	33,833
REENLISTMENT RATE	70.5%	69.3%	67.0%	50.4%	81.8%	70.2%	70.0%	67.6%	49.3%	80.0%

DEFINITIONS:

A/ "UNADJUSTED REENLISTMENT RATE" - THE RATIO OF TOTAL REENLISTMENTS OCCURRING IN A GIVEN PERIOD TO TOTAL SEPARATIONS ELIGIBLE TO REENLIST IN THE SAME PERIOD, EXPRESSED AS A PERCENTAGE.

B/ "ADJUSTED REENLISTMENT RATE" - THE "UNADJUSTED" RATE ADJUSTED TO EXCLUDE THE EFFECTS OF: (1) EARLY SEPARATIONS FOR IMMEDIATE REENLISTMENTS AND (2) OTHER EARLY DISCHARGES OF ELIGIBLES UNDER EARLY RELEASE PROGRAMS.

TABLE R11.0

DEPARTMENT OF DEFENSE
RESERVE COMPONENT STRENGTH SUMMARY

SEPTEMBER 30, 1980

RESERVES BY RESERVE CATEGORY			
TYPE OF DUTY	TOTAL	OFFICER	ENLISTED A/
TOTAL	2,169,495	667,529	1,501,956
READY RESERVE NOT ON ACTIVE DUTY	1,262,533	188,244	1,074,259
ACTIVE STATUS	1,256,939	187,580	1,069,389
INACTIVE STATUS B/	5,534	664	4,870
STANDBY RESERVE ON ACTIVE STATUS	86,032	76,356	9,676
INACTIVE STATUS	23,980	16,125	7,855
INACTIVE STATUS	62,052	60,231	1,821
RETIRED - RETIRED STATUS	820,950	402,929	418,021

A/ INCLUDES OFFICER CANDIDATES.

B/ INACTIVE NATIONAL GUARD AND REP'S IN NON-PAY STATUS.

RESERVES IN "PAID STATUS"			
SELECTED RESERVE	PAY GROUP	TOTAL	OFFICER
DRILL PAY STATUS	A, B, C, M, P, T, O	846,526	116,885
INITIAL ACTIVE DUTY TRAINING	F, U	813,970	116,885
		32,556	-
			729,641
			697,085
			32,556

DEPARTMENT OF DEFENSE
WASHINGTON HEADQUARTERS SERVICES
DIRECTORATE FOR INFORMATION
OPERATIONS AND REPORTS

TABLE R12.0

DEPARTMENT OF DEFENSE
RESERVE STRENGTH - OFFICER AND ENLISTED
NOT ON ACTIVE DUTY

DATE	TOTAL	OFFICERS	ENLISTED A/
31 OCT 1979	2,119,750	663,212	1,456,538
30 NOV 1979	2,126,363	664,288	1,462,075
31 DEC 1979	2,130,130	663,133	1,466,997
31 JAN 1980	2,129,646	662,563	1,467,083
28 FEB 1980	2,133,456	663,894	1,469,562
31 MAR 1980	2,132,165	664,441	1,467,724
30 APR 1980	2,130,393	663,835	1,466,558
31 MAY 1980	2,127,182	664,233	1,462,949
30 JUN 1980	2,132,835	663,535	1,469,300
31 JUL 1980	2,144,603	666,114	1,478,489
31 AUG 1980	2,156,177	666,098	1,490,079
30 SEP 1980	2,169,485	667,529	1,501,956

A/ INCLUDES OFFICER CANDIDATES

DEPARTMENT OF DEFENSE
WASHINGTON HEADQUARTERS SERVICES
DIRECTORATE FOR INFORMATION
OPERATIONS AND REPORTS

TABLE R13.0

DEPARTMENT OF DEFENSE
 READY RESERVE AND ACTIVE DUTY STRENGTH COMPARED TO STATUTORY LIMITATION
 SEPTEMBER 30, 1980

	TOTAL	ON ACTIVE DUTY	NOT ON ACTIVE DUTY
STATUTORY READY RESERVE LIMITATION A/	2,900,000		
DIFFERENCE	1,448,303		
READY RESERVE AND ACTIVE DUTY STRENGTH	1,451,697	168,666	1,283,031
COAST GUARD RESERVE	21,657	1,129	20,528
DOD RESERVE	1,430,040	167,537	1,262,503
ARMY	839,294	54,560	784,734
NATIONAL GUARD B/	375,270	1,482	373,788
ARMY RESERVE	464,024	53,078	410,946
NAVAL RESERVE	248,735	65,011	183,724
MARINE CORPS RESERVE	97,339	5,152	92,187
AIR FORCE	244,672	42,814	201,858
AIR NATIONAL GUARD C/	96,842	270	96,572
AIR FORCE RESERVE	147,830	42,544	105,286

A/ SECTION 205(B), ARMED FORCES RESERVE ACT OF 1952, AS AMENDED.
 B/ INCLUDES "INACTIVE NATIONAL GUARD" NUMBERING 5,534 AND REP'S NUMBERING 1,669.
 C/ INCLUDES REP'S IN A NON-PAY STATUS NUMBERING 271.

DEPARTMENT OF DEFENSE
 WASHINGTON HEADQUARTERS SERVICES
 DIRECTORATE FOR INFORMATION
 OPERATIONS AND REPORTS

TABLE R14.0

DEPARTMENT OF DEFENSE
RESERVE COMPONENT PERSONNEL BY RESERVE CATEGORY
NOT ON ACTIVE DUTY

TOTAL

DATE	TOTAL	READY	STANDBY	RETIRED
31 OCT 1979	2,119,750	1,213,769	103,160	802,821
30 NOV 1979	2,126,363	1,220,242	101,822	804,299
31 DEC 1979	2,130,130	1,223,844	101,554	804,732
31 JAN 1980	2,129,646	1,223,082	99,484	807,080
28 FEB 1980	2,133,456	1,227,561	97,545	808,350
31 MAR 1980	2,132,165	1,226,255	96,006	809,904
30 APR 1980	2,130,393	1,226,823	93,935	809,635
31 MAY 1980	2,127,182	1,224,745	91,885	810,552
30 JUN 1980	2,132,835	1,229,876	90,610	812,349
31 JUL 1980	2,144,603	1,239,213	89,002	816,388
31 AUG 1980	2,156,177	1,249,006	87,363	819,808
30 SEP 1980	2,169,485	1,262,503	86,032	820,950

TABLE R14.0

DEPARTMENT OF DEFENSE
RESERVE COMPONENT PERSONNEL BY RESERVE CATEGORY
NOT ON ACTIVE DUTY

OFFICERS

DATE	TOTAL	READY	STANDBY	RETIRED
31 OCT 1979	663,212	182,299	84,561	396,352
30 NOV 1979	664,288	183,819	83,693	396,776
31 DEC 1979	663,133	182,559	83,665	396,909
31 JAN 1980	662,563	182,745	82,281	397,537
28 FEB 1980	663,894	184,484	81,132	398,278
31 MAR 1980	664,441	184,584	81,008	398,849
30 APR 1980	663,835	185,154	80,500	398,181
31 MAY 1980	664,233	185,141	79,718	399,374
30 JUN 1980	663,535	185,450	79,264	398,821
31 JUL 1980	666,114	185,614	78,385	402,115
31 AUG 1980	666,098	186,515	77,250	402,333
30 SEP 1980	667,529	188,244	76,356	402,929

TABLE R14.0
 DEPARTMENT OF DEFENSE
 RESERVE COMPONENT PERSONNEL BY RESERVE CATEGORY
 NOT ON ACTIVE DUTY

		ENLISTED A/			
DATE	TOTAL	READY	STANDBY	RETIRED	
31 OCT 1979	1,456,538	1,031,470	18,599	406,469	
30 NOV 1979	1,462,075	1,036,423	18,129	407,523	
31 DEC 1979	1,466,997	1,041,285	17,889	407,823	
31 JAN 1980	1,467,083	1,040,337	17,203	409,543	
28 FEB 1980	1,469,562	1,043,077	16,413	410,072	
31 MAR 1980	1,467,724	1,041,671	14,998	411,055	
30 APR 1980	1,466,558	1,041,669	13,435	411,454	
31 MAY 1980	1,462,949	1,039,604	12,167	411,178	
30 JUN 1980	1,469,300	1,044,426	11,346	413,528	
31 JUL 1980	1,478,489	1,053,599	10,617	414,273	
31 AUG 1980	1,490,079	1,062,491	10,113	417,475	
30 SEP 1980	1,501,956	1,074,259	9,676	418,021	

A/ INCLUDES OFFICER CANDIDATES

TABLE R18.0

DEPARTMENT OF DEFENSE
SELECTED RESERVE

DATE	TOTAL	DRILL PAY STATUS	INITIAL ACTIVE DUTY TRAINING
31 OCT 1979	805,869	778,318	27,551
30 NOV 1979	808,630	781,895	26,735
31 DEC 1979	810,860	787,399	23,461
31 JAN 1980	812,859	789,438	23,421
28 FEB 1980	817,152	793,025	24,127
31 MAR 1980	818,348	793,245	25,103
30 APR 1980	819,429	793,787	25,642
31 MAY 1980	821,409	795,057	26,352
30 JUN 1980	825,622	790,967	34,655
31 JUL 1980	829,636	791,263	38,373
31 AUG 1980	835,574	799,062	36,512
30 SEP 1980	846,526	813,970	32,556

DEPARTMENT OF DEFENSE
WASHINGTON HEADQUARTERS SERVICES
DIRECTORATE FOR INFORMATION
OPERATIONS AND REPORTS

TABLE R21.0
 DEPARTMENT OF DEFENSE
 RESERVE PERSONNEL ON ACTIVE DUTY BY COMPONENT
 SEPTEMBER 30, 1980

COMPONENT/PERSONNEL	TOTAL	OFFICER	ENLISTED A/
TOTAL DEPARTMENT OF DEFENSE	167,537	113,531	54,006
ARMY - TOTAL	54,560	50,717	3,843
NATIONAL GUARD OF THE U. S.	1,482	439	1,043
ARMY RESERVE	53,078	50,278	2,800
NAVAL RESERVE	65,011	15,701	49,310
MARINE CORPS RESERVE	5,152	4,759	393
AIR FORCE - TOTAL	42,814	42,354	460
AIR NATIONAL GUARD OF THE U. S.	270	162	108
AIR FORCE RESERVE	42,544	42,192	352

A/ INCLUDES OFFICER CANDIDATES.

DEPARTMENT OF DEFENSE
 WASHINGTON HEADQUARTERS SERVICES
 DIRECTORATE FOR INFORMATION
 OPERATIONS AND REPORTS

TABLE R22.0

DEPARTMENT OF DEFENSE
RESERVE STRENGTH ON ACTIVE DUTY A/

DATE	TOTAL DOD	ARMY				AIR FORCE		
		NATIONAL GUARD	ARMY RESERVE	NAVAL RESERVE	MARINE CORPS RESERVE	AIR NATIONAL GUARD	AIR FORCE RESERVE	
31 OCT 1979	165,200	1,790	52,850	64,014	5,119	299	41,128	
30 NOV 1979	165,287	1,792	52,495	64,179	5,076	301	41,444	
31 DEC 1979	164,506	1,700	52,196	64,423	5,025	296	40,866	
31 JAN 1980	165,369	1,807	52,963	64,773	4,959	306	40,561	
28 FEB 1980	161,285	588	49,150	65,711	4,857	297	40,682	
31 MAR 1980	167,030	1,846	52,815	66,039	4,957	299	41,074	
30 APR 1980	167,174	1,657	52,545	66,138	4,834	294	41,706	
31 MAY 1980	167,885	1,666	52,640	66,253	4,854	294	42,172	
30 JUN 1980	168,114	1,576	52,772	65,923	5,121	290	42,432	
31 JUL 1980	158,944	1,597	53,072	65,777	5,198	289	43,011	
31 AUG 1980	168,446	1,500	52,924	65,592	5,267	270	42,890	
30 SEP 1980	167,537	1,482	53,078	65,011	5,152	270	42,544	

A/ CONTINUOUS OR EXTENDED ACTIVE DUTY.
EXCLUDES ACTIVE DUTY FOR RESERVE TRAINING.

DEPARTMENT OF DEFENSE
WASHINGTON HEADQUARTERS SERVICES
DIRECTORATE FOR INFORMATION
OPERATIONS AND REPORTS

TABLE R23.0

DEPARTMENT OF DEFENSE
RESERVE PERSONNEL BY COMPONENT AND CATEGORY
NOT ON ACTIVE DUTY

SEPTEMBER 30, 1980

COMPONENT/ PERSONNEL	TOTAL	NAT'L GUARD OF THE U. S. A/	ARMY RESERVE	NAVAL RESERVE	MARINE CORPS RESERVE	AIR B/ NAT'L GUARD OF THE U. S.	AIR FORCE RESERVE
TOTAL	2,169,485	373,788	843,784	335,612	102,370	96,572	417,359
OFFICER	667,529	37,951	273,786	163,049	13,832	11,878	167,033
ENLISTED C/	1,501,956	335,837	569,998	172,563	88,538	84,694	250,326
READY RESERVE	1,262,503	373,788	410,946	183,724	92,187	96,572	105,286
OFFICER	188,244	37,951	74,341	35,485	6,228	11,878	22,361
ENLISTED C/	1,074,259	335,837	336,605	148,239	85,959	84,694	82,925
STANDBY RESERVE	86,032	-	19,407	23,337	1,929	-	41,359
OFFICER	76,356	-	18,467	20,109	1,697	-	36,083
ENLISTED	9,676	-	940	3,228	232	-	5,276
ACTIVE STATUS	23,980	-	9,024	3,175	1,842	-	9,939
OFFICER	16,125	-	8,085	69	1,610	-	6,361
ENLISTED	7,855	-	939	3,106	232	-	3,578
INACTIVE STATUS	62,052	-	10,383	20,162	87	-	31,420
OFFICER	60,231	-	10,382	20,040	87	-	29,722
ENLISTED	1,821	-	1	122	-	-	1,698
RETIRED RESERVE	820,950	-	413,431	128,551	8,254	-	270,714
OFFICER	402,929	-	180,978	107,455	5,907	-	108,589
ENLISTED	418,021	-	232,453	21,096	2,347	-	162,125

A/ INCLUDES "INACTIVE NATIONAL GUARD" NUMBERING 5,534 TOTAL, 664 OFFICERS, 4,870 ENLISTED AND RESERVE ENLISTMENT PROGRAM (REPS) IN A NON-PAY STATUS NUMBERING 1,669.

B/ INCLUDES REPS IN A NON-PAY STATUS NUMBERING 271.

C/ INCLUDES OFFICER CANDIDATES.

DEPARTMENT OF DEFENSE
WASHINGTON HEADQUARTERS SERVICES
DIRECTORATE FOR INFORMATION
OPERATIONS AND REPORTS

TABLE R24.0

DEPARTMENT OF DEFENSE
RESERVE STRENGTH NOT ON ACTIVE DUTY A/

DATE	TOTAL DOD	ARMY				AIR FORCE	
		B/ NATIONAL GUARD	ARMY RESERVE	NAVAL RESERVE	MARINE CORPS RESERVE	AIR NATIONAL GUARD	AIR FORCE RESERVE
31 OCT 1979	2,119,750	350,631	830,256	328,822	100,732	93,650	415,659
30 NOV 1979	2,126,363	351,959	831,425	331,478	102,232	93,474	415,795
31 DEC 1979	2,130,130	353,553	833,887	333,015	99,881	93,598	416,196
31 JAN 1980	2,129,646	354,014	833,203	333,036	99,317	93,798	416,278
28 FEB 1980	2,133,456	356,567	833,047	334,155	99,039	93,955	416,693
31 MAR 1980	2,132,165	358,056	831,281	333,175	98,180	94,304	417,169
30 APR 1980	2,130,393	358,648	832,278	331,589	97,753	94,524	415,601
31 MAY 1980	2,127,162	360,645	832,609	329,700	94,440	94,657	415,131
30 JUN 1980	2,132,835	363,048	832,863	330,310	96,826	94,743	415,045
31 JUL 1980	2,144,603	365,194	838,023	331,079	100,483	95,255	414,569
31 AUG 1980	2,156,177	368,411	841,136	332,673	101,839	95,856	416,262
30 SEP 1980	2,169,485	373,788	843,784	335,612	102,370	96,572	417,359

A/ INCLUDES RESERVES ON ACTIVE DUTY
FOR RESERVE TRAINING PURPOSES.
B/ INCLUDES "INACTIVE" NATIONAL GUARD.

DEPARTMENT OF DEFENSE
WASHINGTON HEADQUARTERS SERVICES
DIRECTORATE FOR INFORMATION
OPERATIONS AND REPORTS

TABLE R26.5

DEPARTMENT OF DEFENSE
SELECTED RESERVE DRILL PAY STRENGTH

SEPTEMBER 30, 1980

COMPONENT/ PERSONNEL	TOTAL	DRILL PAY STATUS A/ B/	INITIAL ACTIVE DUTY TRAINING B/
TOTAL DOD	846,526	813,970	32,556
OFFICERS	116,885	116,885	-
ENLISTED	729,641	697,085	32,556
ARMY NATIONAL GUARD	366,585	350,025	16,560
OFFICERS	37,287	37,287	-
ENLISTED	329,298	312,738	16,560
ARMY RESERVE	202,627	195,146	7,481
OFFICERS	35,632	35,632	-
ENLISTED	166,995	159,514	7,481
NAVAL RESERVE	86,751	85,854	897
OFFICERS	16,741	16,741	-
ENLISTED	70,010	69,113	897
MARINE CORPS RESERVE	35,382	31,222	4,160
OFFICERS	2,380	2,380	-
ENLISTED	33,002	28,842	4,160
AIR NATIONAL GUARD	96,260	93,775	2,485
OFFICERS	11,878	11,878	-
ENLISTED	84,382	81,897	2,485
AIR FORCE RESERVE	58,921	57,948	973
OFFICERS	12,967	12,967	-
ENLISTED	45,954	44,981	973

A/ INCLUDES PAY GROUPS A, B, C, M, P, T, O.

B/ INCLUDES PAY GROUPS F AND U.

DEPARTMENT OF DEFENSE
WASHINGTON HEADQUARTERS SERVICES
DIRECTORATE FOR INFORMATION
OPERATIONS AND REPORTS

