

AD-A152 914

MILITARY MANPOWER STATISTICS, OCTOBER, FY-81. (U)
WASHINGTON HEADQUARTERS SERVICE (DOD) DIR FOR INFO
OP & RPTS. OCT 80. DIOR/M03-81/01

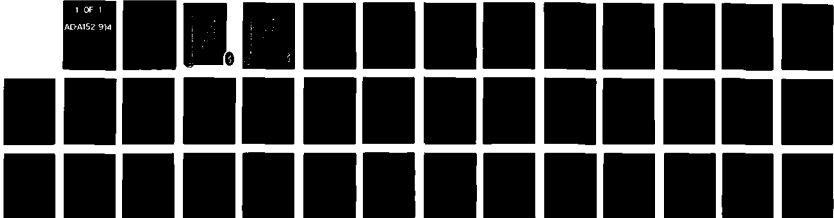
1/1

UNCLASSIFIED

F/G 5/9

N/L

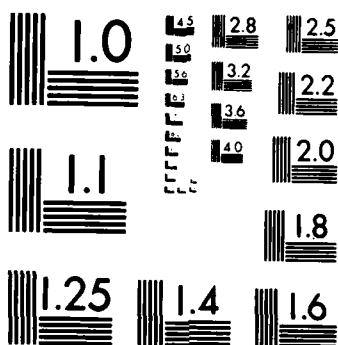
1 OF 1
AD-A152 914



END
FILMED:
11 04 85

1 OF 1

AD-A152 914



MICROCOPY RESOLUTION TEST CHART
NATIONAL BUREAU OF STANDARDS-1963-A

**THIS REPORT IS UNCLASSIFIED AND
ITS DISTRIBUTION IS UNLIMITED**



Department of Defense

MILITARY MANPOWER STATISTICS

OCTOBER 1980





Department of Defense

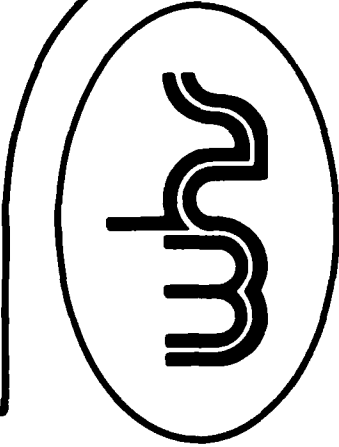
MILITARY MANPOWER STATISTICS

OCTOBER 1980



OSD

WASHINGTON HEADQUARTERS SERVICES



DIRECTORATE FOR INFORMATION
OPERATIONS AND REPORTS (DIOR)
THE PENTAGON, WASHINGTON, D.C.

FOREWORD

MILITARY MANPOWER STATISTICS (MMS) is a monthly publication prepared by the Washington Headquarters Services, Directorate for Information Operations and Reports (WHS/DIOR) of the Office of the Secretary of Defense.

MMS presents audited statistical data pertaining to active duty military, reserve components, and retired military personnel of the Department of Defense. The publication is generated from a computerized data base developed and maintained by the Manpower Management Information Division of WHS/DIOR.

Requests for additional copies and changes in distribution should be addressed to the Director, Washington Headquarters Services, Room 3E843, The Pentagon, Washington, DC 20301.

TABLE OF CONTENTS

<u>Number</u>	<u>Title</u>
Table P10	Military/Civilian Personnel
Table P11	Department of Defense Manpower Comparison
Table P22.1	Total Active Duty Military Personnel by Service
Table P23.1	Active Duty Officer Personnel and Percent of Total Military Personnel by Service
Table P23.3	Total Active Duty Military Personnel by Type
Table P23.4	Army Active Duty Military Personnel by Type
Table P23.5	Navy Active Duty Military Personnel by Type
Table P23.6	Marine Corps Active Duty Military Personnel by Type
Table P23.7	Air Force Active Duty Military Personnel by Type
Table P23.41	Army Active Duty Military Personnel
Table P23.51	Navy Active Duty Military Personnel
Table P23.61	Marine Corps Active Duty Military Personnel
Table P23.71	Air Force Active Duty Military Personnel
Table P25.6	Women Military Personnel on Active Duty Officers and Enlisted by Service
Table P26.0	Military Personnel on Active Duty by Grade in Which Serving
Table P26.04	Military Personnel on Active Duty by Grade in Which Serving - Regular
Table P26.05	Military Personnel on Active Duty by Grade in Which Serving - Reserve

<u>Number</u>	<u>Title</u>
Table P27.1	Summary of Enlisted Personnel Procurement
Table P27.21	Army Enlisted Personnel Procurement
Table P27.22	Navy Enlisted Personnel Procurement
Table P27.23	Marine Corps Enlisted Personnel Procurement
Table P27.24	Air Force Enlisted Personnel Procurement
Table R11.0	Reserve Component Strength Summary
Table R12.0	Reserve Strength - Officer and Enlisted Not on Active Duty
Table R13.0	Ready Reserve and Active Duty Strength Compared to Statutory Limitation
Table R14.0	Reserve Component Personnel by Reserve Category Not on Active Duty - Total
Table R14.0	Reserve Component Personnel by Reserve Category Not on Active Duty - Officers
Table R14.0	Reserve Component Personnel by Reserve Category Not on Active Duty - Enlisted
Table R18.0	Selected Reserve
Table R21.0	Reserve Personnel on Active Duty by Component
Table R22.0	Reserve Strength on Active Duty
Table R23.0	Reserve Personnel by Component and Category Not on Active Duty
Table R24.0	Reserve Strength Not on Active Duty
Table R26.5	Selected Reserve Drill Pay Strength

TABLE P10

DEPARTMENT OF DEFENSE
MILITARY/CIVILIAN PERSONNEL

	TOTAL DOD	ARMY	NAVY	MARINE CORPS	AIR FORCE
1. ACTIVE DUTY MILITARY AS OF 31 OCT 1980					
OFFICER	277,794	98,351	62,889	18,160	98,394
ENLISTED	1,761,671	674,869	459,088	170,079	457,635
ACADEMY CADETS	13,272	4,361	4,535	-	4,376
TOTAL ACTIVE DUTY MILITARY	2,052,737	777,581	526,512	188,239	560,405
2. GUARD AND RESERVES AS OF 31 OCT 1980					
NATIONAL GUARD IN PAID STATUS	471,858	375,199	-	-	96,659
	464,301	367,907	-	-	96,394
RESERVES IN PAID STATUS	1,706,565	850,134	337,302	102,455	416,674
	385,909	205,583	86,225	35,515	58,586
TOTAL GUARD AND RESERVES IN PAID STATUS	2,178,423	1,225,333	337,302	102,455	513,333
	850,210	573,490	86,225	35,515	154,980
3. OFFICER TRAINING IN COLLEGES A/ AS OF OCTOBER 1979	93,295	65,186	7,633	-	20,476
4. CIVILIAN PERSONNEL - MILITARY AND CIVIL FUNCTIONS B/					
AS OF 31 OCT 1980	TOTAL DOD	ARMY	C/ NAVY	AIR FORCE	OTHER D/ DEFENSE AGENCIES
DIRECT HIRE	967,491	348,187	311,514	233,436	74,354
INDIRECT HIRE	74,354	48,751	10,641	13,232	1,730
TOTAL CIVILIAN PERSONNEL	1,041,845	396,938	322,155	246,668	76,084

A/ EXCLUDES 166,212 IN JUNIOR DIVISION, MILITARY

SCHOOLS AND NATIONAL DEFENSE CADETS CORPS.

B/ INCLUDES CIVIL FUNCTIONS EMPLOYMENT OF

34,283 ARMY AND AIR FORCE, ALSO INCLUDES

DISADVANTAGED YOUTH EMPLOYEES.

C/ INCLUDES MARINE CORPS PERSONNEL.

D/ INCLUDES OSD/JCS.

DEPARTMENT OF DEFENSE
WASHINGTON HEADQUARTERS SERVICES
DIRECTORATE FOR INFORMATION
OPERATIONS AND REPORTS

TABLE P11

DOD MANPOWER COMPARISON

(MILITARY & CIVIL FUNCTIONS)

DATE	TOTAL DOD	ARMY			AIR FORCE			NAVY AND MARINE CORPS			A/ OSD/ JCS	
		MILI-TARY	CIVIL-IAN	TOTAL	MILI-TARY	B/ CIVIL-IAN	TOTAL	MILI-TARY	MARINE CORPS	B/ CIVIL-IAN		TOTAL
31 OCT 80	3,020,228	777,581	348,187	1,125,768	560,405	233,436	793,841	526,512	188,239	311,514	1,026,265	74,354

A/ CIVILIAN PERSONNEL. MILITARY PERSONNEL ASSIGNED TO OSD, OJCS AND OTHER DEFENSE ACTIVITIES ARE REPORTED BY THEIR RESPECTIVE SERVICES

B/ -TOTAL PAID EMPLOYEES- AS REPORTED OFFICIALLY TO THE OFFICE OF PERSONNEL MANAGEMENT; EXCLUDES OVERSEAS SUPPORT PERSONNEL (INDIRECT HIRE)

DEPARTMENT OF DEFENSE
WASHINGTON HEADQUARTERS SERVICES
DIRECTORATE FOR INFORMATION
OPERATIONS AND REPORTS

TABLE P22.1

DEPARTMENT OF DEFENSE
TOTAL ACTIVE DUTY MILITARY PERSONNEL BY SERVICE

DATE	TOTAL DOD	ARMY	NAVY	MARINE CORPS	AIR FORCE
OCT 31, 1980	2,052,737	777,581	526,512	188,239	560,405

DEPARTMENT OF DEFENSE
WASHINGTON HEADQUARTERS SERVICES
DIRECTORATE FOR INFORMATION
OPERATIONS AND REPORTS

TABLE P23.1

DEPARTMENT OF DEFENSE
ACTIVE DUTY OFFICER PERSONNEL AND PERCENT OF TOTAL MILITARY PERSONNEL, BY SERVICE

DATE	TOTAL DOD		ARMY		NAVY		MARINE CORPS		AIR FORCE	
	NUMBER	%	NUMBER	%	NUMBER	%	NUMBER	%	NUMBER	%
OCT 31, 1980	277,794	13.5	98,351	12.6	62,889	11.9	18,160	9.6	98,394	17.6

DEPARTMENT OF DEFENSE
WASHINGTON HEADQUARTERS SERVICES
DIRECTORATE FOR INFORMATION
OPERATIONS AND REPORTS

TABLE P23.3

DEPARTMENT OF DEFENSE
TOTAL ACTIVE DUTY MILITARY PERSONNEL BY TYPE

DATE	OFFICERS	ENLISTED	A/ OFFICER CANDIDATES	TOTAL
OCT 31, 1980	277,794	1,761,671	13,272	2,052,737

A/ CONSISTS OF THE FOLLOWING:
FOR ARMY - CADETS, U. S. MILITARY ACADEMY
FOR NAVY - MIDSHIPMEN, U. S. NAVAL ACADEMY
FOR AIR FORCE - CADETS, U. S. AIR FORCE ACADEMY

DEPARTMENT OF DEFENSE
WASHINGTON HEADQUARTERS SERVICES
DIRECTORATE FOR INFORMATION
OPERATIONS AND REPORTS

TABLE P23.4

DEPARTMENT OF DEFENSE
ARMY ACTIVE DUTY MILITARY PERSONNEL BY TYPE

DATE	OFFICERS	ENLISTED	CADETS U.S. MILITARY ACADEMY	TOTAL
OCT 31, 1980	98,351	674,869	4,361	777,581

DEPARTMENT OF DEFENSE
WASHINGTON HEADQUARTERS SERVICES
DIRECTORATE FOR INFORMATION
OPERATIONS AND REPORTS

TABLE P23.5

DEPARTMENT OF DEFENSE
NAVY ACTIVE DUTY MILITARY PERSONNEL BY TYPE

DATE	OFFICERS	ENLISTED	MIDSHIPMEN U.S. NAVAL ACADEMY	TOTAL
OCT 31, 1980	62,889	459,088	4,535	526,512

DEPARTMENT OF DEFENSE
WASHINGTON HEADQUARTERS SERVICES
DIRECTORATE FOR INFORMATION
OPERATIONS AND REPORTS

TABLE P23.6

DEPARTMENT OF DEFENSE
MARINE CORPS ACTIVE DUTY MILITARY PERSONNEL BY TYPE

DATE	OFFICERS	ENLISTED	TOTAL
OCT 31, 1980	18,160	170,079	188,239

DEPARTMENT OF DEFENSE
WASHINGTON HEADQUARTERS SERVICES
DIRECTORATE FOR INFORMATION
OPERATIONS AND REPORTS

TABLE P23.7

DEPARTMENT OF DEFENSE
AIR FORCE ACTIVE DUTY MILITARY PERSONNEL BY TYPE

DATE	OFFICERS	ENLISTED	CADETS U.S.A.F. ACADEMY	TOTAL
OCT 31, 1980	98,394	457,635	4,376	560,405

DEPARTMENT OF DEFENSE
WASHINGTON HEADQUARTERS SERVICES
DIRECTORATE FOR INFORMATION
OPERATIONS AND REPORTS

TABLE P23.41

DEPARTMENT OF DEFENSE
ARMY ACTIVE DUTY MILITARY PERSONNEL

REPORTED STRENGTH, AND ADJUSTMENTS TO REPORTED STRENGTH TO DERIVE "DIRECT PROGRAM STRENGTH" CHARGEABLE TO APPROPRIATION "MILITARY PERSONNEL, ARMY"

DATE	REPORTED STRENGTH	A/ (LESS) EXCLUDABLES	TOTAL PROGRAM STRENGTH	(LESS) REIMBURSABLES	DIRECT PROGRAM STRENGTH CHARGEABLE TO APPROPRIATION "MILITARY PERSONNEL, ARMY"	CADETS USMA				
	TOTAL	OFF	ENL	TOTAL	OFF	ENL	TOTAL	OFFICER	ENLISTED	
31 OCT 1960	777,581	508	2	777,071	395	148	776,528	97,448	674,719	4,361

A/ ACTIVE DUTY PERSONNEL PAID BY AN APPROPRIATION OTHER THAN MILITARY PERSONNEL, ARMY, AND EXCLUDED FROM THE END STRENGTH OF THE ARMY. COMPRISED OF CIVIL WORKS PERSONNEL, AND USAR AND ARNG PERSONNEL ON STATUTORY TOURS.

DEPARTMENT OF DEFENSE
WASHINGTON HEADQUARTERS SERVICES
DIRECTORATE FOR INFORMATION
OPERATIONS AND REPORTS

TABLE P23.51

DEPARTMENT OF DEFENSE
NAVY ACTIVE DUTY MILITARY PERSONNEL

REPORTED STRENGTH, AND ADJUSTMENTS TO REPORTED STRENGTH TO DERIVE "DIRECT PROGRAM STRENGTH" CHARGEABLE TO APPROPRIATION "MILITARY PERSONNEL, NAVY"

DATE	REPORTED STRENGTH	(LESS) PAID FROM A/ RES PERS APPN	TOTAL PROGRAM STRENGTH	(LESS) REIMBURSABLES	OFFICER ENLISTED	TOTAL	OFFICER ENLISTED	OFFICER ENLISTED	OFFICER CANDIDATES
31 OCT 1980	526,512	199	526,313	419	1,265	524,629	62,271	457,823	4,535

A/ NAVAL RESERVE PERSONNEL ON ACTIVE DUTY UNDER PROVISIONS OF SEC. 265, TITLE 10, U.S. CODE PAID FROM THE NAVAL RESERVE PERSONNEL APPROPRIATION.

DEPARTMENT OF DEFENSE
WASHINGTON HEADQUARTERS SERVICES
DIRECTORATE FOR INFORMATION OPERATIONS AND REPORTS

TABLE P23.61

DEPARTMENT OF DEFENSE
MARINE CORPS ACTIVE DUTY MILITARY PERSONNEL

REPORTED STRENGTH, AND ADJUSTMENTS TO REPORTED STRENGTH TO DERIVE "DIRECT PROGRAM STRENGTH" CHARGEABLE TO APPROPRIATION "MILITARY PERSONNEL, MARINE CORPS"

DATE	REPORTED STRENGTH	(LESS) PAID FROM A/ RES PERS APPN	TOTAL PROGRAM STRENGTH	(LESS) REIMBURSABLES	DIRECT PROGRAM STRENGTH CHARGEABLE TO APPN. "MILITARY PERSONNEL, MARINE CORPS"	TOTAL	OFFICER	ENLISTED	OFFICER	ENLISTED	OFFICER CANDIDATES
31 OCT 1980	188,239	56	188,173	24	188,148	188,148	18,070	170,078	-	-	-

A/ MARINE CORPS RESERVE PERSONNEL ON ACTIVE DUTY UNDER PROVISIONS OF SEC. 265, TITLE 10, U.S. CODE PAID FROM THE MARINE CORPS RESERVE PERSONNEL APPROPRIATION.

DEPARTMENT OF DEFENSE
WASHINGTON HEADQUARTERS SERVICES
DIRECTORATE FOR INFORMATION
OPERATIONS AND REPORTS

TABLE P23.71

DEPARTMENT OF DEFENSE
AIR FORCE ACTIVE DUTY MILITARY PERSONNEL

REPORTED STRENGTH, AND ADJUSTMENTS TO REPORTED STRENGTH TO DERIVE "DIRECT PROGRAM STRENGTH" CHARGEABLE TO APPROPRIATION "MILITARY PERSONNEL, AIR FORCE"

DATE	REPORTED STRENGTH	(LESS) ANG/AFR	TOTAL PROGRAM STRENGTH	(LESS) REIMBURSABLES	OFFICER ENLISTED	TOTAL	OFFICER ENLISTED	OFFICER	ENLISTED	USAF & AVCADS
31 OCT 1980	560,405	259	560,146							

DEPARTMENT OF DEFENSE
WASHINGTON HEADQUARTERS SERVICES
DIRECTORATE FOR INFORMATION
OPERATIONS AND REPORTS

TABLE P25.6

DEPARTMENT OF DEFENSE
 WOMEN MILITARY PERSONNEL ON ACTIVE DUTY, OFFICERS, AND ENLISTED BY SERVICE

DATE	TOTAL DOD		ARMY		NAVY		MARINE CORPS		AIR FORCE						
	TOTAL	OFF	TOTAL	OFF	TOTAL	OFF	TOTAL	OFF	TOTAL	OFF					
31 OCT 80	173,307	21,818	151,489	70,039	7,638	62,401	35,279	4,929	30,350	6,787	486	6,301	61,202	8,765	52,437

DEPARTMENT OF DEFENSE
 WASHINGTON HEADQUARTERS SERVICES
 DIRECTORATE FOR INFORMATION
 OPERATIONS AND REPORTS

TABLE P26.0

DEPARTMENT OF DEFENSE
MILITARY PERSONNEL ON ACTIVE DUTY BY GRADE IN WHICH SERVING A/

OCTOBER 31, 1980

RANK/GRADE	TOTAL DOD	ARMY	NAVY	MARINE CORPS	AIR FORCE
GENERAL OF ARMY - FLEET ADMIRAL	1	1	-	-	-
GENERAL - ADMIRAL	32	9	8	2	13
LT GENERAL - VICE ADMIRAL	114	37	31	7	39
MAJ GENERAL - REAR ADMIRAL (U)	404	170	89	25	120
BRIG GENERAL - REAR ADMIRAL (L)	560	216	131	32	181
COLONEL - CAPTAIN	13,799	4,592	3,510	578	5,119
LIEUTENANT COL - COMMANDER	32,795	11,096	7,510	1,512	12,677
MAJOR - LT COMMANDER	49,262	16,063	12,192	2,824	18,183
CAPTAIN - LIEUTENANT	85,836	28,648	17,178	4,845	35,165
1ST LIEUTENANT - LIEUTENANT (JG)	35,740	11,081	9,755	4,265	10,639
2ND LIEUTENANT - ENSIGN	41,637	13,022	9,504	2,853	16,258
CHIEF WARRANT OFFICER W-4	2,117	1,412	525	180	-
CHIEF WARRANT OFFICER W-3	4,676	3,988	636	52	-
CHIEF WARRANT OFFICER W-2	7,457	5,124	1,820	513	-
WARRANT OFFICER W-1	3,364	2,892	-	472	-
TOTAL OFFICERS	277,794	96,351	62,889	18,160	98,394
E-9	12,793	3,748	3,211	1,216	4,618
E-8	33,595	13,070	8,389	2,963	9,163
E-7	116,998	45,363	29,909	8,278	33,428
E-6	203,758	74,344	64,702	12,658	52,054
E-5	321,374	119,768	80,070	22,566	98,970
E-4	395,477	170,532	97,129	24,646	103,170
E-3	320,134	100,245	76,690	43,942	99,257
E-2	168,052	62,711	51,693	27,084	26,574
E-1	189,490	85,068	47,295	26,726	30,401
TOTAL ENLISTED	1,761,671	674,869	459,088	170,079	457,635
CADETS & MIDSHIPMEN	13,272	4,361	4,535	-	4,376
GRAND TOTAL	2,052,737	777,581	526,512	188,239	560,405

A/ INCLUDES REIMBURSABLE ACTIVE DUTY
MILITARY PAY STRENGTHS AND ACTIVE
DUTY MILITARY PERSONNEL PAID FROM
CIVIL FUNCTIONS, RESERVE, AND
NATIONAL GUARD APPROPRIATIONS.

DEPARTMENT OF DEFENSE
WASHINGTON HEADQUARTERS SERVICES
DIRECTORATE FOR INFORMATION
OPERATIONS AND REPORTS

TABLE P26.04

DEPARTMENT OF DEFENSE
MILITARY PERSONNEL ON ACTIVE DUTY BY GRADE IN WHICH SERVING

REGULAR A/

OCTOBER 31, 1980

RANK/GRADE	ARMY	NAVY	MARINE CORPS	AIR FORCE
GENERAL OF ARMY - FLEET ADMIRAL	1	-	-	-
GENERAL - ADMIRAL	32	8	2	13
LT GENERAL - VICE ADMIRAL	113	31	7	39
MAJ GENERAL - REAR ADMIRAL (U)	399	88	24	119
BRIG GENERAL - REAR ADMIRAL (L)	557	130	32	181
COLONEL - CAPTAIN	13,124	3,348	557	4,932
LIEUTENANT COL - COMMANDER	29,085	6,941	1,492	11,537
MAJOR - LT COMMANDER	36,892	10,778	2,734	13,719
CAPTAIN - LIEUTENANT	11,525	12,540	4,179	20,583
1ST LIEUTENANT - LIEUTENANT (JG)	3,886	5,720	2,316	2,323
2ND LIEUTENANT - ENSIGN	12,111	4,537	858	1,763
CHIEF WARRANT OFFICER W-4	1,668	518	176	-
CHIEF WARRANT OFFICER W-3	2,622	635	50	-
CHIEF WARRANT OFFICER W-2	3,440	1,797	506	-
WARRANT OFFICER W-1	494	-	472	-
TOTAL OFFICERS	163,590	47,071	13,405	55,209
E-9	12,655	3,092	1,214	4,602
E-8	33,194	8,042	2,949	9,129
E-7	115,630	28,690	8,248	33,295
E-6	200,466	61,600	12,630	51,915
E-5	316,393	75,253	22,510	98,896
E-4	387,261	89,643	24,630	103,061
E-3	307,398	65,612	43,904	99,126
E-2	154,854	39,430	26,987	26,562
E-1	179,571	38,222	26,597	30,219
TOTAL ENLISTED	1,707,382	409,584	169,669	456,805
REGULAR TOTAL	1,870,972	456,655	183,074	512,014

A/ REGULAR PLUS RETIRED REGULAR OFFICERS ON ACTIVE DUTY.

DEPARTMENT OF DEFENSE
WASHINGTON HEADQUARTERS SERVICES
DIRECTORATE FOR INFORMATION
OPERATIONS AND REPORTS

TABLE P26.05

DEPARTMENT OF DEFENSE
MILITARY PERSONNEL ON ACTIVE DUTY BY GRADE IN WHICH SERVING
RESERVE A/

OCTOBER 31, 1980

RANK/GRADE	TOTAL- DOD	ARMY	NAVY	MARINE CORPS	AIR FORCE
GENERAL OF ARMY - FLEET ADMIRAL	-	-	-	-	-
GENERAL	-	-	-	-	-
LT GENERAL	1	1	-	-	-
MAJ GENERAL	5	2	1	1	1
BRIG GENERAL	3	2	1	-	-
COLONEL	675	305	162	21	187
LIEUTENANT COL	3,710	1,981	569	20	1,140
MAJOR	12,380	6,412	1,414	90	4,454
CAPTAIN	37,039	17,123	4,638	656	14,582
1ST LIEUTENANT	21,495	7,195	4,035	1,349	8,316
2ND LIEUTENANT	29,526	8,069	4,967	1,995	14,495
CHIEF WARRANT OFFICER W-4	449	438	7	4	-
CHIEF WARRANT OFFICER W-3	2,054	2,051	1	2	-
CHIEF WARRANT OFFICER W-2	4,017	3,987	23	7	-
WARRANT OFFICER W-1	2,880	2,880	-	-	-
TOTAL OFFICERS	114,234	50,446	15,818	4,755	43,185
E-9	138	1	119	2	16
E-8	431	6	347	14	34
E-7	1,398	16	1,219	30	133
E-6	3,292	23	3,102	28	139
E-5	4,991	34	4,817	56	74
E-4	8,216	605	7,486	16	109
E-3	12,736	1,489	11,078	38	131
E-2	13,238	836	12,263	97	12
E-1	9,919	535	9,073	129	182
TOTAL ENLISTED	54,289	3,545	49,504	410	830
RESERVE TOTAL	168,493	53,991	65,322	5,165	44,015

A/ INCLUDES RESERVE, NATIONAL GUARD,
AUS, AND AFUS OFFICERS ON ACTIVE
DUTY.

DEPARTMENT OF DEFENSE
WASHINGTON HEADQUARTERS SERVICES
DIRECTORATE FOR INFORMATION
OPERATIONS AND REPORTS

TABLE P27.1

DEPARTMENT OF DEFENSE
SUMMARY OF ENLISTED PERSONNEL PROCUREMENT
FISCAL YEAR 1981

	OCT 1980	NOV 1980	DEC 1980	JAN 1981	FEB 1981	MAR 1981
TOTAL DEPARTMENT OF DEFENSE	49,831					
INDUCTIONS						
FIRST ENLISTMENTS	27,819					
IMMEDIATE REENLISTMENTS	16,801					
OTHER REENLISTMENTS	3,495					
RESERVES TO ACTIVE DUTY A/	1,716					
ARMY	19,837					
INDUCTIONS						
FIRST ENLISTMENTS	11,100					
IMMEDIATE REENLISTMENTS	6,645					
OTHER REENLISTMENTS	2,027					
RESERVES TO ACTIVE DUTY	65					
NAVY	11,535					
INDUCTIONS						
FIRST ENLISTMENTS	5,849					
IMMEDIATE REENLISTMENTS	3,558					
OTHER REENLISTMENTS	599					
RESERVES TO ACTIVE DUTY	1,529					
MARINE CORPS	4,653					
INDUCTIONS						
FIRST ENLISTMENTS	3,308					
IMMEDIATE REENLISTMENTS	967					
OTHER REENLISTMENTS	258					
RESERVES TO ACTIVE DUTY	120					
AIR FORCE	13,806					
INDUCTIONS						
FIRST ENLISTMENTS	7,562					
IMMEDIATE REENLISTMENTS	5,631					
OTHER REENLISTMENTS	611					
RESERVES TO ACTIVE DUTY	2					

A/ INCLUDES NATIONAL GUARD.

TABLE P27.21

DEPARTMENT OF DEFENSE
ARMY ENLISTED PERSONNEL PROCUREMENT
FISCAL YEAR 1981

	OCT 1980	NOV 1980	DEC 1980	JAN 1981	FEB 1981	MAR 1981
TOTAL	19,837					
REGULAR ENL. AND REENL. - TOTAL	19,772					
FIRST ENLISTMENTS	11,100					
REENLISTMENTS - TOTAL	8,672					
IMMEDIATE REENLISTMENTS	6,645					
FORMER REGULAR	6,562					
FORMER RESERVE & N.G.	83					
FORMER INDUCTEE	-					
R-ENL OTHER THAN IMMEDIATE	2,027					
WITHIN 2-90 DAYS AFTER SEPARATION	209					
FORMER REGULAR	60					
FORMER RESERVE & N.G.	139					
FORMER INDUCTEE	10					
FORMER OFFICER	-					
OVER 90 DAYS AFTER SEPARATION	1,818					
INDUCTIONS	-					
RESERVES AND N.G. CALLS	65					

DEPARTMENT OF DEFENSE
WASHINGTON HEADQUARTERS SERVICES
DIRECTORATE FOR INFORMATION
OPERATIONS AND REPORTS

TABLE P27.22

DEPARTMENT OF DEFENSE
NAVY ENLISTED PERSONNEL PROCUREMENT
FISCAL YEAR 1981

	OCT 1980	NOV 1980	DEC 1980	JAN 1981	FEB 1981	MAR 1981
TOTAL	11,535					
REGULAR ENL. AND REENL. - TOTAL	10,006					
FIRST ENLISTMENTS	5,843					
REENLISTMENTS - TOTAL	4,157					
IMMEDIATE REENLISTMENTS	3,558					
FORMER REGULAR	3,438					
FORMER RESERVE	120					
REENL. OTHER THAN IMMEDIATE	599					
WITHIN 290 DAYS AFTER SEPARATION	135					
FORMER REGULAR	135					
FORMER RESERVE	-					
OVER 90 DAYS AFTER SEPARATION	464					
INDUCTIONS	-					
RESERVES TO ACTIVE DUTY	1,529					
FIRST ENLISTMENTS	155					
REENLISTMENTS	142					
REPORTED TO ACTIVE DUTY	1,232					

DEPARTMENT OF DEFENSE
WASHINGTON HEADQUARTERS SERVICES
DIRECTORATE FOR INFORMATION
OPERATIONS AND REPORTS

TABLE P27 23

DEPARTMENT OF DEFENSE
MARINE CORPS ENLISTED PERSONNEL PROCUREMENT
FISCAL YEAR 1981

	OCT 1980	NOV 1980	DEC 1980	JAN 1981	FEB 1981	MAR 1981
TOTAL	4,653					
REGULAR ENL. AND REENL. TOTAL	4,533					
FIRST ENLISTMENTS	3,308					
REENLISTMENTS - TOTAL	1,225					
IMMEDIATE REENLISTMENTS	967					
FORMER REGULAR A/ FORMER RESERVE FORMER INDUCTEE	940 27 -					
REENL OTHER THAN IMMEDIATE	258					
WITHIN 2-90 DAYS AFTER SEPARATION	2					
FORMER REGULAR FORMER RESERVE FORMER INDUCTEE	2 - -					
OVER 90 DAYS AFTER SEPARATION B/	256					
INDUCTIONS						
RESERVES TO ACTIVE DUTY	120					
FIRST ENLISTMENTS REENLISTMENTS REPORTED TO ACTIVE DUTY	- - 120					

A/ INCLUDES EXTENSIONS FOR WHICH REENLISTMENT BONUS IS PAID
B/ INCLUDES ENLISTMENTS OF FORMER OFFICERS.

TABLE P27 24

DEPARTMENT OF DEFENSE
AIR FORCE ENLISTED PERSONNEL PROCUREMENT
FISCAL YEAR 1981

	OCT 1980	NOV 1980	DEC 1980	JAN 1981	FEB 1981	MAR 1981
--	-------------	-------------	-------------	-------------	-------------	-------------

TOTAL 13 806

REGULAR ENL AND REENL. - TOTAL 13,804

FIRST ENLISTMENTS 7,562

REENLISTMENTS - TOTAL 6,242

IMMEDIATE REENLISTMENTS 5,631

FORMER REGULAR 5,630

FORMER RESERVE & N G. 1

REENL OTHER THAN IMMEDIATE 611

WITHIN 2-90 DAYS AFTER SEPARATION -

FORMER REGULAR -

FORMER RESERVE & N.G. -

OVER 90 DAYS AFTER SEPARATION: A/ 611

INDUCTIONS -

RESERVES & N G. TO ACTIVE DUTY 2

A/ INCLUDES ENLISTMENTS OF FORMER COMMISSIONED AND WARRANT OFFICERS.

TABLE R11.0

DEPARTMENT OF DEFENSE
RESERVE COMPONENT STRENGTH SUMMARY

OCTOBER 31, 1980

RESERVES BY RESERVE CATEGORY			
TYPE OF DUTY	TOTAL	OFFICER	ENLISTED A/
TOTAL	2,178,423	667,943	1,510,480
READY RESERVE NOT ON ACTIVE DUTY	1,270,690	188,850	1,081,840
ACTIVE STATUS	1,264,983	188,174	1,076,809
INACTIVE STATUS B/	5,707	676	5,031
STANDBY RESERVE ON ACTIVE STATUS	85,181	75,683	9,498
INACTIVE STATUS	23,726	15,977	7,749
	61,455	59,706	1,749
RETIRED - RETIRED STATUS	822,552	403,410	419,142

A/ INCLUDES OFFICER CANDIDATES.

B/ INACTIVE NATIONAL GUARD AND REP'S IN NON-PAY STATUS.

RESERVES IN "PAID STATUS"			
PAY GROUP	TOTAL	OFFICER	ENLISTED
SELECTED RESERVE	850,210	115,975	734,235
DRILL PAY STATUS	617,292	115,975	701,317
INITIAL ACTIVE DUTY TRAINING	32,918	-	32,918
A, B, C, M, P, T, Q			
F, U			

DEPARTMENT OF DEFENSE
WASHINGTON HEADQUARTERS SERVICES
DIRECTORATE FOR INFORMATION
OPERATIONS AND REPORTS

TABLE R12.0

DEPARTMENT OF DEFENSE
RESERVE STRENGTH - OFFICER AND ENLISTED
NOT ON ACTIVE DUTY

DATE	TOTAL	OFFICERS	ENLISTED A/
31 OCT 1980	2,178,423	667,943	1,510,480

A/ INCLUDES OFFICER CANDIDATES.

DEPARTMENT OF DEFENSE
WASHINGTON HEADQUARTERS SERVICES
DIRECTORATE FOR INFORMATION
OPERATIONS AND REPORTS

TABLE R13.0

DEPARTMENT OF DEFENSE
 READY RESERVE AND ACTIVE DUTY STRENGTH COMPARED TO STATUTORY LIMITATION
 OCTOBER 31, 1980

	TOTAL	ON ACTIVE DUTY	NOT ON ACTIVE DUTY
STATUTORY READY RESERVE LIMITATION A/	2,900,000		
DIFFERENCE	1,439,210		
READY RESERVE AND ACTIVE DUTY STRENGTH	1,460,790	169,629	1,291,161
COAST GUARD RESERVE	21,607	1,136	20,471
DOD RESERVE	1,439,183	168,493	1,270,690
ARMY	845,452	53,991	791,461
NATIONAL GUARD B/	376,464	1,265	375,199
ARMY RESERVE	468,988	52,726	416,262
NAVAL RESERVE	251,119	65,322	185,797
MARINE CORPS RESERVE	97,337	5,165	92,172
AIR FORCE	245,275	44,015	201,260
AIR NATIONAL GUARD C/	96,970	311	96,659
AIR FORCE RESERVE	148,305	43,704	104,601

A/ SECTION 205(B), ARMED FORCES RESERVE ACT OF 1952, AS AMENDED.
 B/ INCLUDES "INACTIVE NATIONAL GUARD" NUMBERING 5,707 AND REP'S NUMBERING 1,585.
 C/ INCLUDES REP'S IN A NON-PAY STATUS NUMBERING 299.

DEPARTMENT OF DEFENSE
 WASHINGTON HEADQUARTERS SERVICES
 DIRECTORATE FOR INFORMATION
 OPERATIONS AND REPORTS

TABLE R14.0

DEPARTMENT OF DEFENSE
RESERVE COMPONENT PERSONNEL BY RESERVE CATEGORY
NOT ON ACTIVE DUTY

DATE	TOTAL	READY	STANDBY	RETIRED
31 OCT 1980	2,178,423	1,270,690	65,181	822,552

TABLE R14.0

DEPARTMENT OF DEFENSE
RESERVE COMPONENT PERSONNEL BY RESERVE CATEGORY
NOT ON ACTIVE DUTY

OFFICERS

DATE	TOTAL	READY	STANDBY	RETIRED
31 OCT 1980	667,943	188,850	75,683	403,410

TABLE R14.0

DEPARTMENT OF DEFENSE
RESERVE COMPONENT PERSONNEL BY RESERVE CATEGORY
NOT ON ACTIVE DUTY

DATE	ENLISTED A/		
	TOTAL	READY	STANDBY
31 OCT 1980	1,510,480	1,081,840	9,498
			419,142

A/ INCLUDES OFFICER CANDIDATES.

TABLE R18.0

DEPARTMENT OF DEFENSE
SELECTED RESERVE

DATE	TOTAL	DRILL PAY STATUS	INITIAL ACTIVE DUTY TRAINING
31 OCT 1980	850,210	817,292	32,918

DEPARTMENT OF DEFENSE
WASHINGTON HEADQUARTERS SERVICES
DIRECTORATE FOR INFORMATION
OPERATIONS AND REPORTS

TABLE R21.0
 DEPARTMENT OF DEFENSE
 RESERVE PERSONNEL ON ACTIVE DUTY BY COMPONENT
 OCTOBER 31, 1980

COMPONENT/PERSONNEL	TOTAL	OFFICER	ENLISTED A/
TOTAL DEPARTMENT OF DEFENSE	168,493	114,204	54,289
ARMY - TOTAL	53,991	50,446	3,545
NATIONAL GUARD OF THE U. S.	1,265	431	834
ARMY RESERVE	52,726	50,015	2,711
NAVAL RESERVE	65,322	15,818	49,504
MARINE CORPS RESERVE	5,165	4,755	410
AIR FORCE - TOTAL	44,015	43,185	830
AIR NATIONAL GUARD OF THE U. S.	1,311	162	149
AIR FORCE RESERVE	43,704	43,023	681

A/ INCLUDES OFFICER CANDIDATES.

DEPARTMENT OF DEFENSE
 WASHINGTON HEADQUARTERS SERVICES
 DIRECTORATE FOR INFORMATION
 OPERATIONS AND REPORTS

TABLE R22.0

DEPARTMENT OF DEFENSE
RESERVE STRENGTH ON ACTIVE DUTY A/

DATE	TOTAL DOD	ARMY			NAVAL RESERVE			MARINE CORPS RESERVE		AIR FORCE	
		NATIONAL GUARD	ARMY RESERVE	NAVAL RESERVE	NAVAL RESERVE	MARINE CORPS RESERVE	AIR NATIONAL GUARD	AIR FORCE RESERVE			
31 OCT 1980	168,493	1,265	52,726	65,322	5,165	311	43,704				

A/ CONTINUOUS OR EXTENDED ACTIVE DUTY
EXCLUDES ACTIVE DUTY FOR RESERVE TRAINING.

DEPARTMENT OF DEFENSE
WASHINGTON HEADQUARTERS SERVICES
DIRECTORATE FOR INFORMATION
OPERATIONS AND REPORTS

TABLE R23.0

DEPARTMENT OF DEFENSE
RESERVE PERSONNEL BY COMPONENT AND CATEGORY
NOT ON ACTIVE DUTY

OCTOBER 31, 1980

COMPONENT/ PERSONNEL	TOTAL	NAT'L GUARD OF THE U. S. A/			ARMY RESERVE	NAVAL RESERVE	MARINE CORPS RESERVE	AIR B/	
								NAT'L GUARD OF THE U. S.	AIR FORCE RESERVE
TOTAL	2,178,423	375,199	850,134	337,302	102,455	96,659	416,674		
OFFICER	667,943	37,955	275,054	162,740	13,899	11,875	166,420		
ENLISTED C/	1,510,480	337,244	575,080	174,562	88,556	84,784	250,254		
READY RESERVE	1,270,690	375,199	416,262	185,797	92,172	96,659	104,601		
OFFICER	188,850	37,955	75,531	35,448	6,221	11,875	21,820		
ENLISTED C/	1,081,840	337,244	340,731	150,349	85,951	84,784	82,781		
STANDBY RESERVE	85,181	-	19,068	22,746	1,991	-	41,376		
OFFICER	75,683	-	18,170	19,767	1,744	-	36,002		
ENLISTED	9,498	-	898	2,979	247	-	5,374		
ACTIVE STATUS	23,726	-	8,862	2,940	1,903	-	10,021		
OFFICER	15,977	-	7,965	73	1,656	-	6,283		
ENLISTED	7,749	-	897	2,867	247	-	3,738		
INACTIVE STATUS	61,455	-	10,206	19,806	88	-	31,355		
OFFICER	59,706	-	10,205	19,694	88	-	29,719		
ENLISTED	1,749	-	1	112	-	-	1,636		
RETIRED RESERVE	822,552	-	414,804	128,759	8,292	-	270,697		
OFFICER	403,410	-	181,353	107,525	5,934	-	108,598		
ENLISTED	419,142	-	233,451	21,234	2,358	-	162,099		

A/ INCLUDES "INACTIVE NATIONAL GUARD" NUMBERING 5,707 TOTAL, 676 OFFICERS, 5,031 ENLISTED AND RESERVE ENLISTMENT PROGRAM (REPS) IN A NON-PAY STATUS NUMBERING 1,585.

B/ INCLUDES REPS IN A NON-PAY STATUS NUMBERING 239.

C/ INCLUDES OFFICER CANDIDATES.

DEPARTMENT OF DEFENSE
WASHINGTON HEADQUARTERS SERVICES
DIRECTORATE FOR INFORMATION
OPERATIONS AND REPORTS

TABLE R24.0

DEPARTMENT OF DEFENSE
RESERVE STRENGTH NOT ON ACTIVE DUTY A/

DATE	TOTAL OOD	ARMY			AIR FORCE		
		B/ NATIONAL GUARD	ARMY RESERVE	NAVAL RESERVE	MARINE CORPS RESERVE	AIR NATIONAL GUARD	AIR FORCE RESERVE
31 OCT 1980	2,178,423	375,199	850,134	337,302	102,455	96,659	416,674

A/ INCLUDES RESERVES ON ACTIVE DUTY
FOR RESERVE TRAINING PURPOSES.
B/ INCLUDES "INACTIVE" NATIONAL GUARD.

DEPARTMENT OF DEFENSE
WASHINGTON HEADQUARTERS SERVICES
DIRECTORATE FOR INFORMATION
OPERATIONS AND REPORTS

TABLE R26.5

DEPARTMENT OF DEFENSE
SELECTED RESERVE DRILL PAY STRENGTH

OCTOBER 31, 1980

COMPONENT/ PERSONNEL	TOTAL	DRILL PAY STATUS A/	INITIAL ACTIVE DUTY TRAINING B/
TOTAL DOD	850,210	817,292	32,918
OFFICERS	115,975	115,975	-
ENLISTED	734,235	701,317	32,918
ARMY NATIONAL GUARD	367,907	352,274	15,633
OFFICERS	37,279	37,279	-
ENLISTED	330,628	314,995	15,633
ARMY RESERVE	205,583	197,255	8,328
OFFICERS	35,623	35,623	-
ENLISTED	169,960	161,632	8,328
NAVAL RESERVE	86,225	85,326	899
OFFICERS	15,873	15,873	-
ENLISTED	70,352	69,453	899
MARINE CORPS RESERVE	35,515	30,969	4,546
OFFICERS	2,366	2,366	-
ENLISTED	33,149	28,603	4,546
AIR NATIONAL GUARD	96,394	93,912	2,482
OFFICERS	11,875	11,875	-
ENLISTED	84,519	82,037	2,482
AIR FORCE RESERVE	58,586	57,556	1,030
OFFICERS	12,959	12,959	-
ENLISTED	45,627	44,597	1,030

A/ INCLUDES PAY GROUPS A, B, C, M, P, T, Q.

B/ INCLUDES PAY GROUPS F AND U.

DEPARTMENT OF DEFENSE
WASHINGTON HEADQUARTERS SERVICES
DIRECTORATE FOR INFORMATION
OPERATIONS AND REPORTS