

AD-A152 916

MILITARY MANPOWER STATISTICS, DECEMBER, FY-81. (U)
WASHINGTON HEADQUARTERS SERVICE (DOD) DIR FOR INFO
OP & RPTS. DEC 80. DIOR/M03-81/03

1/1

UNCLASSIFIED

F/G 5/9

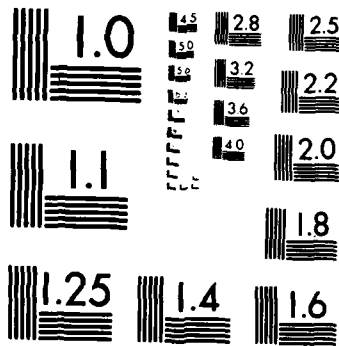
N/L

1 OF 1
AD-A152 916

END
FILMED:
11 04 85

1 OF 1

AD-A152 916



MICROCOPY RESOLUTION TEST CHART
NATIONAL BUREAU OF STANDARDS 1963-A

**THIS REPORT IS UNCLASSIFIED AND
ITS DISTRIBUTION IS UNLIMITED**



Department of Defense
MILITARY MANPOWER STATISTICS
DECEMBER 1980



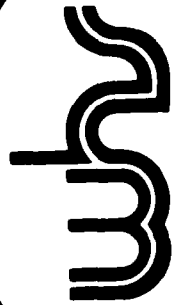


Department of Defense

MILITARY MANPOWER STATISTICS



DIRECTORATE FOR INFORMATION
OPERATIONS AND REPORTS (DIOR)
THE PENTAGON, WASHINGTON, D.C.



OSD WASH-NGTON HEADQUARTERS SERVICES

FOREWORD

MILITARY MANPOWER STATISTICS (MMS) is a monthly publication prepared by the Washington Headquarters Services, Directorate for Information Operations and Reports (WHS/DIOR) of the Office of the Secretary of Defense.

The MMS report presents audited statistical data pertaining to military personnel on active duty and personnel in military reserve components, for the current fiscal year on a monthly basis. The publication is generated from a computerized data base developed and maintained by the Manpower Management Information Division of WHS/DIOR. The March, June, September, and December issues contain quarterly summaries of certain data as shown in the List of Tables.

Requests for additional copies and changes in distribution should be addressed to the Director, Washington Headquarters Services, Room 3E843, The Pentagon, Washington, D.C. 20301.

NOTE: This issue of the Military Manpower Statistics contains the Reserve strength tables for both November and December 1980. The Reserve strength data were not included in the November 1980 issue of this publication.

TABLE OF CONTENTS

Section

1

Active Duty Military Manpower Statistics

2

Reserve Military Manpower Statistics

LIST OF TABLES

<u>Number</u>	<u>Title</u>
Table P10	Military/Civilian Personnel
Table P11	Department of Defense Manpower Comparison
Table P22.1	Total Active Duty Military Personnel by Service
Table P23.1	Active Duty Officer Personnel and Percent of Total Military Personnel by Service
Table P23.3	Total Active Duty Military Personnel by Type
Table P23.4	Army Active Duty Military Personnel by Type
Table P23.5	Navy Active Duty Military Personnel by Type
Table P23.6	Marine Corps Active Duty Military Personnel by Type
Table P23.7	Air Force Active Duty Military Personnel by Type
Table P23.41	Army Active Duty Military Personnel
Table P23.51	Navy Active Duty Military Personnel
Table P23.61	Marine Corps Active Duty Military Personnel
Table P23.71	Air Force Active Duty Military Personnel
Table P25.6	Women Military Personnel on Active Duty Officers and Enlisted by Service
Table P26.0	Military Personnel on Active Duty by Grade in Which Serving
Table P26.02	Female Military Personnel on Active Duty by Grade in Which Serving (Quarterly)
Table P26.04	Military Personnel on Active Duty by Grade in Which Serving - Regular

<u>Number</u>	<u>Title</u>
Table P26.05	Military Personnel on Active Duty by Grade in Which Serving - Reserve
Table P27.1	Summary of Enlisted Personnel Procurement
Table P27.21	Army Enlisted Personnel Procurement
Table P27.22	Navy Enlisted Personnel Procurement
Table P27.23	Marine Corps Enlisted Personnel Procurement
Table P27.24	Air Force Enlisted Personnel Procurement
Table P29.20-29.34	Reenlistment Rates by Service (Quarterly)
Table 309A	Active Duty Military Personnel Strength by Regional Area and by Country (Quarterly)
Table R11.0	Reserve Component Strength Summary
Table R12.0	Reserve Strength - Officer and Enlisted Not on Active Duty
Table R13.0	Ready Reserve and Active Duty Strength Compared to Statutory Limitation
Table R14.0	Reserve Component Personnel by Reserve Category Not on Active Duty - Total
Table R14.0	Reserve Component Personnel by Reserve Category Not on Active Duty - Officers
Table R14.0	Reserve Component Personnel by Reserve Category Not on Active Duty - Enlisted
Table R18.0	Selected Reserve
Table R21.0	Reserve Personnel on Active Duty by Component
Table R22.0	Reserve Strength on Active Duty
Table R23.0	Reserve Personnel by Component and Category Not on Active Duty

Number

Title

Table R24.0	Reserve Strength Not on Active Duty
Table R26.5	Selected Reserve Drill Pay Strength
Table R26.5	Selected Reserve Drill Pay Strength

Section 1

ACTIVE DUTY MILITARY MANPOWER STATISTICS

TABLE P10

DEPARTMENT OF DEFENSE
MILITARY/CIVILIAN PERSONNEL

	TOTAL DOD	ARMY	NAVY	MARINE CORPS	AIR FORCE
1. ACTIVE DUTY MILITARY AS OF 31 DEC 1980					
OFFICER ENLISTED ACADEMY CADETS	277,811 1,759,847 13,100	98,226 669,817 4,308	63,218 463,867 4,497	17,951 169,241 -	98,416 456,922 4,295
TOTAL ACTIVE DUTY MILITARY	2,050,758	772,351	531,582	187,192	559,633
2. GUARD AND RESERVES AS OF 31 DEC 1980					
NATIONAL GUARD IN PAID STATUS	475,606 462,933	378,911 368,062	- -	- -	96,695 94,871
RESERVES IN PAID STATUS	1,734,960 388,596	881,680 208,165	337,350 87,110	100,528 35,207	415,402 58,114
TOTAL GUARD AND RESERVES IN PAID STATUS	2,210,566 651,529	1,260,591 576,227	337,350 87,110	100,528 35,207	512,097 152,985
3. OFFICER TRAINING IN COLLEGES A/ AS OF OCTOBER 1980					
	102,626	71,240	8,300	-	23,086
4. CIVILIAN PERSONNEL - MILITARY AND CIVIL FUNCTIONS B/					
AS OF 31 DEC 1980	TOTAL DOD	ARMY	C/ NAVY	AIR FORCE	OTHER D/ DEFENSE AGENCIES
DIRECT HIRE	972,999	347,031	314,610	233,540	77,518
INDIRECT HIRE	72,758	47,093	10,654	13,261	1,750
TOTAL CIVILIAN PERSONNEL	1,045,757	394,424	325,264	246,801	79,268

A/ EXCLUDES 179,194 IN JUNIOR DIVISION, MILITARY
SCHOOLS AND NATIONAL DEFENSE CADETS CORPS.B/ INCLUDES CIVIL FUNCTIONS EMPLOYMENT OF
34,566 ARMY AND AIR FORCE. ALSO INCLUDES
DISADVANTAGED YOUTH EMPLOYEES.

C/ INCLUDES MARINE CORPS PERSONNEL.

D/ INCLUDES OSD/JCS.

DEPARTMENT OF DEFENSE
WASHINGTON HEADQUARTERS SERVICES
DIRECTORATE FOR INFORMATION
OPERATIONS AND REPORTS

TABLE P11

DOD MANPOWER COMPARISON

(MILITARY & CIVIL FUNCTIONS)

DATE	TOTAL DOD	ARMY		AIR FORCE			NAVY AND MARINE CORPS			A/ OSD/ JCS		
		MILI-TARY	CIVIL-IAN	TOTAL	MILI-TARY	B/ CIVIL-IAN	TOTAL	NAVY MILI-TARY	MARINE CORPS MILI-TARY		B/ CIVIL-IAN	TOTAL
31 OCT 80	3,020,228	777,581	348,187	1,125,768	560,405	233,436	793,841	526,512	188,239	311,514	1,026,265	74,354
30 NOV 80	3,027,191	776,357	347,504	1,123,861	560,892	233,425	794,317	529,993	188,248	313,173	1,031,414	77,599
31 DEC 80	3,023,757	772,351	347,331	1,119,682	559,633	233,540	793,173	531,582	187,192	314,610	1,033,384	77,518

A/ CIVILIAN PERSONNEL. MILITARY PERSONNEL ASSIGNED TO OSD, OJCS AND OTHER DEFENSE ACTIVITIES ARE REPORTED BY THEIR RESPECTIVE SERVICES.

B/ -TOTAL PAID EMPLOYEES- AS REPORTED OFFICIALLY TO THE OFFICE OF PERSONNEL MANAGEMENT; EXCLUDES OVERSEAS SUPPORT PERSONNEL (INDIRECT HIRE).

DEPARTMENT OF DEFENSE
WASHINGTON HEADQUARTERS SERVICES
DIRECTORATE FOR INFORMATION
OPERATIONS AND REPORTS

TABLE P22.1

DEPARTMENT OF DEFENSE
TOTAL ACTIVE DUTY MILITARY PERSONNEL BY SERVICE

DATE	TOTAL DOD	ARMY	NAVY	MARINE CORPS	AIR FORCE
OCT 31, 1980	2,052,737	777,581	526,512	188,239	560,405
NOV 30, 1980	2,055,490	776,357	529,993	188,248	560,892
DEC 31, 1980	2,050,758	772,351	531,582	187,192	559,633

DEPARTMENT OF DEFENSE
WASHINGTON HEADQUARTERS SERVICES
DIRECTORATE FOR INFORMATION
OPERATIONS AND REPORTS

TABLE P23.1

DEPARTMENT OF DEFENSE
 ACTIVE DUTY OFFICER PERSONNEL AND PERCENT OF TOTAL MILITARY PERSONNEL, BY SERVICE

DATE	TOTAL DOD		ARMY		NAVY		MARINE CORPS		AIR FORCE	
	NUMBER	%	NUMBER	%	NUMBER	%	NUMBER	%	NUMBER	%
OCT 31, 1980	277,794	13.5	98,351	12.6	62,889	11.9	18,160	9.6	98,394	17.6
NOV 30, 1980	277,855	13.5	98,038	12.6	63,190	11.9	18,022	9.6	98,605	17.6
DEC 31, 1980	277,811	13.5	98,226	12.7	63,218	11.9	17,951	9.6	98,416	17.6

DEPARTMENT OF DEFENSE
 WASHINGTON HEADQUARTERS SERVICES
 DIRECTORATE FOR INFORMATION
 OPERATIONS AND REPORTS

TABLE P23.3

DEPARTMENT OF DEFENSE
TOTAL ACTIVE DUTY MILITARY PERSONNEL BY TYPE

DATE	OFFICERS	ENLISTED	A/ OFFICER CANDIDATES	TOTAL
OCT 31, 1980	277,794	1,761,671	13,272	2,052,737
NOV 30, 1980	277,855	1,764,435	13,200	2,055,490
DEC 31, 1980	277,811	1,759,847	13,100	2,050,758

A/ CONSISTS OF THE FOLLOWING:
FOR ARMY - CADETS, U. S. MILITARY ACADEMY
FOR NAVY - MIDSHIPMEN, U. S. NAVAL ACADEMY
FOR AIR FORCE - CADETS, U. S. AIR FORCE ACADEMY

DEPARTMENT OF DEFENSE
WASHINGTON HEADQUARTERS SERVICES
DIRECTORATE FOR INFORMATION
OPERATIONS AND REPORTS

TABLE P23.4

DEPARTMENT OF DEFENSE
ARMY ACTIVE DUTY MILITARY PERSONNEL BY TYPE

DATE	OFFICERS	ENLISTED	U.S. MILITARY ACADEMY	CADETS	TOTAL
OCT 31, 1980	98,351	674,869	4,361	777,581	
NOV 30, 1980	98,038	673,967	4,352	776,357	
DEC 31, 1980	98,226	669,817	4,308	772,351	

DEPARTMENT OF DEFENSE
WASHINGTON HEADQUARTERS SERVICES
DIRECTORATE FOR INFORMATION
OPERATIONS AND REPORTS

TABLE P23.5

DEPARTMENT OF DEFENSE
NAVY ACTIVE DUTY MILITARY PERSONNEL BY TYPE

DATE	OFFICERS	ENLISTED	MIDSHIPMEN		TOTAL
			U.S. NAVAL ACADEMY		
OCT 31, 1980	62,889	459,088	4,535		526,512
NOV 30, 1980	63,190	462,304	4,499		529,993
DEC 31, 1980	63,218	463,867	4,497		531,582

DEPARTMENT OF DEFENSE
WASHINGTON HEADQUARTERS SERVICES
DIRECTORATE FOR INFORMATION
OPERATIONS AND REPORTS

TABLE P23.6

DEPARTMENT OF DEFENSE
MARINE CORPS ACTIVE DUTY MILITARY PERSONNEL BY TYPE

DATE	OFFICERS	ENLISTED	TOTAL
OCT 31, 1980	18,160	170,079	188,239
NOV 30, 1980	18,022	170,226	188,248
DEC 31, 1980	17,951	169,241	187,192

DEPARTMENT OF DEFENSE
WASHINGTON HEADQUARTERS SERVICES
DIRECTORATE FOR INFORMATION
OPERATIONS AND REPORTS

TABLE P23.7

DEPARTMENT OF DEFENSE
AIR FORCE ACTIVE DUTY MILITARY PERSONNEL BY TYPE

DATE	OFFICERS	ENLISTED	CADETS		TOTAL
			U.S.A.F.	ACADEMY	
OCT 31, 1980	98,394	457,635	4,376		560,405
NOV 30, 1980	98,605	457,938	4,349		560,892
DEC 31, 1980	98,416	456,922	4,295		559,633

DEPARTMENT OF DEFENSE
WASHINGTON HEADQUARTERS SERVICES
DIRECTORATE FOR INFORMATION
OPERATIONS AND REPORTS

TABLE P23.41

DEPARTMENT OF DEFENSE
ARMY ACTIVE DUTY MILITARY PERSONNEL

REPORTED STRENGTH, AND ADJUSTMENTS TO REPORTED STRENGTH TO DERIVE "DIRECT PROGRAM STRENGTH" CHARGEABLE TO APPROPRIATION "MILITARY PERSONNEL, ARMY"

DATE	REPORTED STRENGTH		A/ (LESS) EXCLUDABLES		TOTAL PROGRAM STRENGTH		(LESS) REIMBURSABLES		DIRECT PROGRAM STRENGTH CHARGEABLE TO APPROPRIATION "MILITARY PERSONNEL, ARMY"		CADETS USMA		
	TOTAL	ENL	OFF	ENL	TOTAL	ENL	OFF	ENL	TOTAL	OFFICER	ENLISTED		
31 OCT 1980	777,581	2	508	2	777,071	148	395	148	776,528	97,448	674,719	4,361	
30 NOV 1980	776,357	1	510	1	775,846	25	395	25	775,426	97,133	673,941	4,352	
31 DEC 1980	772,351	1	515	1	771,835	142	396	142	771,297	97,315	669,674	4,308	

A/ ACTIVE DUTY PERSONNEL PAID BY AN APPROPRIATION OTHER THAN MILITARY PERSONNEL, ARMY, AND EXCLUDED FROM THE END STRENGTH OF THE ARMY. COMPRISED OF CIVIL WORKS PERSONNEL, AND USAR AND ARNG PERSONNEL ON STATUTORY TOURS.

DEPARTMENT OF DEFENSE
WASHINGTON HEADQUARTERS SERVICES
DIRECTORATE FOR INFORMATION
OPERATIONS AND REPORTS

TABLE P23 51

DEPARTMENT OF DEFENSE
NAVY ACTIVE DUTY MILITARY PERSONNEL

REPORTED STRENGTH, AND ADJUSTMENTS TO REPORTED STRENGTH TO DERIVE "DIRECT PROGRAM STRENGTH" CHARGEABLE TO APPROPRIATION "MILITARY PERSONNEL, NAVY"

DATE	REPORTED STRENGTH	(LESS)		TOTAL PROGRAM STRENGTH	(LESS)		TOTAL	DIRECT PROGRAM STRENGTH CHARGEABLE TO APPROPRIATION "MILITARY PERSONNEL, NAVY"		OFFICER CANDIDATES
		PAID FROM A/ RES PERS APPN	OFFICER		ENLISTED	OFFICER		ENLISTED		
31 OCT 1980	526,512	199	419	526,313	1,265	1,265	524,629	62,271	457,823	4,535
30 NOV 1980	529,993	202	399	529,791	1,273	1,273	528,119	62,589	461,031	4,499
31 DEC 1980	531,582	224	402	531,358	1,277	1,277	529,679	62,592	462,590	4,497

A/ NAVAL RESERVE PERSONNEL ON ACTIVE DUTY UNDER PROVISIONS OF SEC 265, TITLE 10, U.S. CODE PAID FROM THE NAVAL RESERVE PERSONNEL APPROPRIATION.

DEPARTMENT OF DEFENSE
WASHINGTON HEADQUARTERS SERVICES
DIRECTORATE FOR INFORMATION
OPERATIONS AND REPORTS

TABLE P23.61

DEPARTMENT OF DEFENSE
MARINE CORPS ACTIVE DUTY MILITARY PERSONNEL

REPORTED STRENGTH, AND ADJUSTMENTS TO REPORTED STRENGTH TO DERIVE "DIRECT PROGRAM STRENGTH" CHARGEABLE TO APPROPRIATION "MILITARY PERSONNEL, MARINE CORPS"

DATE	REPORTED STRENGTH	(LESS) PAID FROM A/ RES PERS APPN	TOTAL PROGRAM STRENGTH	REIMBURSABLES (LESS)	OFFICER ENLISTED	TOTAL	OFFICER ENLISTED	DIRECT PROGRAM STRENGTH CHARGEABLE TO APPN. "MILITARY PERSONNEL, MARINE CORPS"	OFFICER ENLISTED	OFFICER CANDIDATES
31 OCT 1980	188,239	66	188,173	24	1	188,148	18,070	170,078	-	-
30 NOV 1980	188,248	66	188,182	24	1	188,157	17,932	170,225	-	-
31 DEC 1980	187,192	66	187,126	24	1	187,101	17,861	169,240	-	-

A/ MARINE CORPS RESERVE PERSONNEL ON ACTIVE DUTY UNDER PROVISIONS OF SEC. 265, TITLE 10, U.S. CODE PAID FROM THE MARINE CORPS RESERVE PERSONNEL APPROPRIATION.

DEPARTMENT OF DEFENSE
WASHINGTON HEADQUARTERS SERVICES
DIRECTORATE FOR INFORMATION
OPERATIONS AND REPORTS

TABLE P23.71

DEPARTMENT OF DEFENSE
AIR FORCE ACTIVE DUTY MILITARY PERSONNEL

REPORTED STRENGTH, AND ADJUSTMENTS TO REPORTED STRENGTH TO DERIVE "DIRECT PROGRAM STRENGTH" CHARGEABLE TO APPROPRIATION "MILITARY PERSONNEL, AIR FORCE"

DATE	REPORTED STRENGTH	(LESS) ANG/AFR	TOTAL PROGRAM STRENGTH	(LESS) REIMBURSABLES		TOTAL	DIRECT PROGRAM STRENGTH CHARGEABLE TO APPROP. "MILITARY PERSONNEL, AIR FORCE"		USAF & AVCADS
				OFFICER	ENLISTED		OFFICER	ENLISTED	
31 OCT 1980	560,405	259	560,146						
30 NOV 1980	560,892	233	560,659						
31 DEC 1980	559,633	257	559,376						

DEPARTMENT OF DEFENSE
WASHINGTON HEADQUARTERS SERVICES
DIRECTORATE FOR INFORMATION
OPERATIONS AND REPORTS

TABLE P25.6

DEPARTMENT OF DEFENSE
 WOMEN MILITARY PERSONNEL ON ACTIVE DUTY, OFFICERS, AND ENLISTED BY SERVICE

DATE	TOTAL DOD		ARMY		NAVY		MARINE CORPS		AIR FORCE					
	TOTAL	OFF	TOTAL	OFF	TOTAL	OFF	TOTAL	OFF	TOTAL	OFF				
31 OCT 80	173,307	21,818	70,039	7,638	62,401	35,279	4,929	30,350	6,787	486	6,301	61,202	8,765	52,437
30 NOV 80	174,540	21,964	70,240	7,583	62,657	35,973	5,031	30,942	6,766	480	6,286	61,561	8,870	52,691
31 DEC 80	174,589	22,046	69,980	7,645	62,335	36,292	5,044	31,248	6,750	481	6,269	61,567	8,876	52,691

DEPARTMENT OF DEFENSE
 WASHINGTON HEADQUARTERS SERVICES
 DIRECTORATE FOR INFORMATION
 OPERATIONS AND REPORTS

TABLE P26.0

DEPARTMENT OF DEFENSE
MILITARY PERSONNEL ON ACTIVE DUTY BY GRADE IN WHICH SERVING A/

DECEMBER 31, 1980

RANK/GRADE	TOTAL DOD	ARMY	NAVY	MARINE CORPS	AIR FORCE
GENERAL OF ARMY - FLEET ADMIRAL	1	1	-	-	-
GENERAL - ADMIRAL	32	9	8	2	13
LT GENERAL - VICE ADMIRAL	113	36	31	7	39
MAJ GENERAL - REAR ADMIRAL (U)	404	171	88	24	121
BRIG GENERAL - REAR ADMIRAL (L)	553	214	131	32	176
COLONEL - CAPTAIN	13,955	4,636	3,573	567	5,179
LIEUTENANT COL - COMMANDER	33,170	11,169	7,662	1,512	12,827
MAJOR - LT COMMANDER	49,732	16,137	12,519	2,865	18,211
CAPTAIN - LIEUTENANT	84,480	28,009	16,453	4,709	35,309
1ST LIEUTENANT - LIEUTENANT (JG)	36,344	11,034	10,281	4,403	10,626
2ND LIEUTENANT - ENSIGN	41,415	13,316	9,561	2,623	15,915
CHIEF WARRANT OFFICER W-4	2,104	1,421	509	174	-
CHIEF WARRANT OFFICER W-3	4,661	4,006	604	51	-
CHIEF WARRANT OFFICER W-2	7,340	5,032	1,798	510	-
WARRANT OFFICER W-1	3,507	3,035	-	472	-
TOTAL OFFICERS	277,811	98,226	63,218	17,951	98,416
E-9	12,808	3,730	3,229	1,199	4,650
E-8	33,904	13,270	8,414	3,023	9,197
E-7	117,920	45,781	30,198	8,200	33,741
E-6	205,419	75,374	64,936	13,033	52,076
E-5	322,038	120,145	80,467	23,074	98,352
E-4	393,748	172,046	91,546	26,900	103,256
E-3	329,416	100,711	85,344	43,809	99,552
E-2	165,607	61,626	52,490	25,120	26,371
E-1	178,987	77,134	47,243	24,883	29,727
TOTAL ENLISTED	1,759,847	669,817	463,867	169,241	456,922
CADETS & MIDSHIPMEN	13,100	4,308	4,497	-	4,295
GRAND TOTAL	2,050,758	772,351	531,582	187,192	559,633

A/ INCLUDES REIMBURSABLE ACTIVE DUTY
MILITARY PAY STRENGTHS AND ACTIVE
DUTY MILITARY PERSONNEL PAID FROM
CIVIL FUNCTIONS, RESERVE, AND
NATIONAL GUARD APPROPRIATIONS.

DEPARTMENT OF DEFENSE
WASHINGTON HEADQUARTERS SERVICES
DIRECTORATE FOR INFORMATION
OPERATIONS AND REPORTS

TABLE P26.02

DEPARTMENT OF DEFENSE
FEMALE MILITARY PERSONNEL ON ACTIVE DUTY BY GRADE IN WHICH SERVING A/
DECEMBER 31, 1980

RANK/GRADE	ARMY	NAVY	MARINE CORPS	AIR FORCE	TOTAL DOD
GENERAL OF ARMY - FLEET ADMIRAL	-	-	-	-	-
GENERAL - ADMIRAL	-	-	-	-	-
LT GENERAL - VICE ADMIRAL	-	-	-	-	-
MAJ GENERAL - REAR ADMIRAL (U)	3	1	-	1	5
BRIG GENERAL - REAR ADMIRAL (L)	4	1	-	2	7
COLONEL - CAPTAIN	243	81	6	62	392
LIEUTENANT COL - COMMANDER	859	234	23	323	1,419
MAJOR - LT COMMANDER	2,242	714	50	736	3,742
CAPTAIN - LIEUTENANT	7,843	1,652	104	3,034	12,633
1ST LIEUTENANT - LIEUTENANT (JG)	4,660	1,284	153	1,897	7,994
2ND LIEUTENANT - ENSIGN	6,027	1,060	117	2,821	10,025
CHIEF WARRANT OFFICER W-4	7	2	3	-	12
CHIEF WARRANT OFFICER W-3	11	3	2	-	16
CHIEF WARRANT OFFICER W-2	78	12	14	-	104
WARRANT OFFICER W-1	69	-	9	-	78
TOTAL OFFICERS	22,046	5,044	481	8,876	36,447
E-9	46	4	6	14	70
E-8	168	28	23	29	228
E-7	961	165	94	121	1,341
E-6	4,455	1,388	214	545	6,602
E-5	25,075	4,955	980	7,758	38,768
E-4	42,631	6,824	1,314	16,080	66,849
E-3	40,553	8,506	1,731	17,609	68,399
E-2	18,614	5,512	1,161	5,632	30,929
E-1	18,896	3,573	746	4,417	27,632
TOTAL ENLISTED	151,399	30,955	6,269	52,205	190,828
CADETS & MIDSHIPMEN	1,144	293	-	486	1,923
GRAND TOTAL	174,589	36,292	6,750	61,567	279,198

A/ INCLUDES REIMBURSABLE ACTIVE DUTY MILITARY PAY STRENGTHS AND ACTIVE DUTY MILITARY PERSONNEL PAID FROM CIVIL FUNCTIONS, RESERVE, AND NATIONAL GUARD APPROPRIATIONS.

DEPARTMENT OF DEFENSE
WASHINGTON HEADQUARTERS SERVICES
DIRECTORATE FOR INFORMATION OPERATIONS AND REPORTS

TABLE P26.04

DEPARTMENT OF DEFENSE
MILITARY PERSONNEL ON ACTIVE DUTY BY GRADE IN WHICH SERVING

REGULAR A/

DECEMBER 31, 1980

RANK/GRADE	TOTAL DOD	ARMY	NAVY	MARINE CORPS	AIR FORCE
GENERAL OF ARMY - FLEET ADMIRAL	1	1	-	-	-
GENERAL - ADMIRAL	32	9	8	2	13
LT GENERAL - VICE ADMIRAL	112	35	31	7	39
MAJ GENERAL - REAR ADMIRAL (U)	399	169	87	23	120
BRIG GENERAL - REAR ADMIRAL (L)	550	212	130	32	176
COLONEL - CAPTAIN	13,270	4,322	3,412	548	4,988
LIEUTENANT COL - COMMANDER	29,377	9,187	7,033	1,489	11,668
MAJOR - LT COMMANDER	37,007	9,440	10,955	2,776	13,836
CAPTAIN - LIEUTENANT	49,137	11,311	12,017	4,125	21,684
1ST LIEUTENANT - LIEUTENANT (JG)	13,876	3,818	5,907	2,388	1,763
2ND LIEUTENANT - ENSIGN	12,179	5,123	4,419	877	1,760
CHIEF WARRANT OFFICER W-4	1,655	984	501	170	-
CHIEF WARRANT OFFICER W-3	2,605	1,952	603	50	-
CHIEF WARRANT OFFICER W-2	3,351	1,072	1,775	504	-
WARRANT OFFICER W-1	484	12	-	472	-
TOTAL OFFICERS	164,035	47,647	46,878	13,463	56,047
E-9	12,665	3,729	3,105	1,197	4,634
E-8	33,491	13,263	8,067	3,005	9,156
E-7	116,506	45,766	28,955	8,167	33,618
E-6	202,089	75,355	61,795	13,006	51,933
E-5	316,892	120,112	75,585	22,913	98,282
E-4	386,441	171,451	84,962	26,881	103,147
E-3	315,242	99,417	72,623	43,754	99,448
E-2	152,656	61,031	40,249	25,025	26,351
E-1	168,811	76,517	37,939	24,792	29,563
TOTAL ENLISTED	1,704,793	666,641	413,280	168,740	456,132
REGULAR TOTAL	1,868,828	714,288	460,158	182,203	512,179

A/ REGULAR PLUS RETIRED REGULAR
OFFICERS ON ACTIVE DUTYDEPARTMENT OF DEFENSE
WASHINGTON HEADQUARTERS SERVICES
DIRECTORATE FOR INFORMATION
OPERATIONS AND REPORTS

TABLE P26.05

DEPARTMENT OF DEFENSE
MILITARY PERSONNEL ON ACTIVE DUTY BY GRADE IN WHICH SERVING

RESERVE A/

DECEMBER 31, 1980

RANK/GRADE	ARMY	NAVY	MARINE CORPS	AIR FORCE
GENERAL OF ARMY - FLEET ADMIRAL	-	-	-	-
GENERAL	-	-	-	-
LT GENERAL	1	-	-	-
MAJ GENERAL	5	1	1	1
BRIG GENERAL	3	1	-	-
COLONEL	685	161	19	191
LIEUTENANT COL	3,793	629	23	1,159
MAJOR	12,725	1,564	89	4,375
CAPTAIN	35,343	4,436	584	13,625
1ST LIEUTENANT	22,468	4,374	2,015	8,863
2ND LIEUTENANT	29,236	5,142	1,746	14,155
CHIEF WARRANT OFFICER W-4	449	8	4	-
CHIEF WARRANT OFFICER W-3	2,056	1	1	-
CHIEF WARRANT OFFICER W-2	3,989	23	6	-
WARRANT OFFICER W-1	3,023	-	-	-
TOTAL OFFICERS	113,776	16,340	4,488	42,369
E-9	143	124	2	16
E-8	413	347	18	41
E-7	1,414	1,243	33	123
E-6	3,330	3,141	27	143
E-5	5,146	4,882	161	70
E-4	7,307	6,584	19	109
E-3	14,174	12,721	55	104
E-2	12,951	12,241	95	20
E-1	10,176	9,304	91	164
TOTAL ENLISTED	55,054	50,587	501	790
RESERVE TOTAL	168,830	66,927	4,989	43,159

A/ INCLUDES RESERVE, NATIONAL GUARD,
AUS, AND AFUS OFFICERS ON ACTIVE
DUTY.

DEPARTMENT OF DEFENSE
WASHINGTON HEADQUARTERS SERVICES
DIRECTORATE FOR INFORMATION
OPERATIONS AND REPORTS

TABLE P27.1

DEPARTMENT OF DEFENSE
SUMMARY OF ENLISTED PERSONNEL PROCUREMENT
FISCAL YEAR 1981

	OCT 1980	NOV 1980	DEC 1980	JAN 1981	FEB 1981	MAR 1981
TOTAL DEPARTMENT OF DEFENSE	49,831	46,533	36,687			
INDUCTIONS	-	-	-			
FIRST ENLISTMENTS	27,819	25,050	16,880			
IMMEDIATE REENLISTMENTS	16,801	15,995	16,351			
OTHER REENLISTMENTS	3,495	3,299	1,985			
RESERVES TO ACTIVE DUTY A/	1,716	2,189	1,471			
ARMY	19,837	14,869	12,698			
INDUCTIONS	-	-	-			
FIRST ENLISTMENTS	11,100	8,220	5,275			
IMMEDIATE REENLISTMENTS	6,645	5,148	6,407			
OTHER REENLISTMENTS	2,027	1,449	973			
RESERVES TO ACTIVE DUTY	65	52	43			
NAVY	11,535	15,039	9,961			
INDUCTIONS	-	-	-			
FIRST ENLISTMENTS	5,849	7,805	4,952			
IMMEDIATE REENLISTMENTS	3,558	4,128	2,953			
OTHER REENLISTMENTS	599	1,031	669			
RESERVES TO ACTIVE DUTY	1,529	2,075	1,387			
MARINE CORPS	4,653	5,042	2,896			
INDUCTIONS	-	-	-			
FIRST ENLISTMENTS	3,308	3,337	1,583			
IMMEDIATE REENLISTMENTS	967	1,456	1,141			
OTHER REENLISTMENTS	258	188	132			
RESERVES TO ACTIVE DUTY	120	61	40			
AIR FORCE	13,806	11,583	11,132			
INDUCTIONS	-	-	-			
FIRST ENLISTMENTS	7,562	5,688	5,070			
IMMEDIATE REENLISTMENTS	5,631	5,263	5,850			
OTHER REENLISTMENTS	611	631	211			
RESERVES TO ACTIVE DUTY	2	1	1			

A/ INCLUDES NATIONAL GUARD.

DEPARTMENT OF DEFENSE
WASHINGTON HEADQUARTERS SERVICE
DIRECTORATE FOR INFORMATION
OPERATIONS AND REPORTS

TABLE P27.21

DEPARTMENT OF DEFENSE
ARMY ENLISTED PERSONNEL PROCUREMENT
FISCAL YEAR 1981

	OCT 1980	NOV 1980	DEC 1980	JAN 1981	FEB 1981	MAR 1981
TOTAL	19,837	14,869	12,698			
REGULAR ENL. AND REENL. - TOTAL	19,772	14,817	12,655			
FIRST ENLISTMENTS	11,100	8,220	5,275			
REENLISTMENTS - TOTAL	8,672	6,597	7,380			
IMMEDIATE REENLISTMENTS	6,645	5,148	6,407			
FORMER REGULAR	6,562	5,084	6,314			
FORMER RESERVE & N.G.	83	64	93			
FORMER INDUCTEE	-	-	-			
REENL. OTHER THAN IMMEDIATE	2,027	1,449	973			
WITHIN 2-90 DAYS AFTER SEPARATION	209	139	112			
FORMER REGULAR	60	29	29			
FORMER RESERVE & N.G.	139	95	72			
FORMER INDUCTEE	10	15	9			
FORMER OFFICER	-	-	2			
OVER 90 DAYS AFTER SEPARATION	1,818	1,310	861			
INDUCTIONS	-	-	-			
RESERVES AND N.G. CALLS	65	52	43			

DEPARTMENT OF DEFENSE
WASHINGTON HEADQUARTERS SERVICES
DIRECTORATE FOR INFORMATION
OPERATIONS AND REPORTS

TABLE P27.22

DEPARTMENT OF DEFENSE
NAVY ENLISTED PERSONNEL PROCUREMENT
FISCAL YEAR 1981

	OCT 1980	NOV 1980	DEC 1980	JAN 1981	FEB 1981	MAR 1981
TOTAL	11,535	15,039	9,961			
REGULAR ENL. AND REENL. - TOTAL	10,006	12,964	8,574			
FIRST ENLISTMENTS	5,849	7,805	4,952			
REENLISTMENTS - TOTAL	4,157	5,159	3,622			
IMMEDIATE REENLISTMENTS	3,558	4,128	2,953			
FORMER REGULAR FORMER RESERVE	3,438 120	4,039 89	2,848 105			
REENL. OTHER THAN IMMEDIATE	599	1,031	669			
WITHIN 2-90 DAYS AFTER SEPARATION	135	259	161			
FORMER REGULAR FORMER RESERVE	135	259	161			
OVER 90 DAYS AFTER SEPARATION	464	772	508			
INDUCTIONS						
RESERVES TO ACTIVE DUTY	1,529	2,075	1,387			
FIRST ENLISTMENTS	155	288	157			
REENLISTMENTS	142	133	110			
REPORTED TO ACTIVE DUTY	1,232	1,654	1,120			

DEPARTMENT OF DEFENSE
WASHINGTON HEADQUARTERS SERVICES
DIRECTORATE FOR INFORMATION
OPERATIONS AND REPORTS

TABLE P27.23

DEPARTMENT OF DEFENSE
MARINE CORPS ENLISTED PERSONNEL PROCUREMENT
FISCAL YEAR 1981

	OCT 1980	NOV 1980	DEC 1980	JAN 1981	FEB 1981	MAR 1981
TOTAL	4,653	5,042	2,896			
REGULAR ENL. AND REENL. - TOTAL	4,533	4,981	2,856			
FIRST ENLISTMENTS	3,308	3,337	1,583			
REENLISTMENTS - TOTAL	1,225	1,644	1,273			
IMMEDIATE REENLISTMENTS	967	1,456	1,141			
FORMER REGULAR A/	940	1,422	1,105			
FORMER RESERVE	27	34	36			
FORMER INDUCTEE	-	-	-			
REENL. OTHER THAN IMMEDIATE	258	188	132			
WITHIN 2-90 DAYS AFTER SEPARATION	2	3	6			
FORMER REGULAR	2	3	6			
FORMER RESERVE	-	-	-			
FORMER INDUCTEE	-	-	-			
OVER 90 DAYS AFTER SEPARATION B/	256	185	126			
INDUCTIONS	-	-	-			
RESERVES TO ACTIVE DUTY	120	61	40			
FIRST ENLISTMENTS	-	-	-			
REENLISTMENTS	-	-	-			
REPORTED TO ACTIVE DUTY	120	61	40			

A/ INCLUDES EXTENSIONS FOR WHICH REENLISTMENT BONUS IS PAID.

B/ INCLUDES ENLISTMENTS OF FORMER OFFICERS.

TABLE P27.24

DEPARTMENT OF DEFENSE
AIR FORCE ENLISTED PERSONNEL PROCUREMENT
FISCAL YEAR 1981

	OCT 1980	NOV 1980	DEC 1980	JAN 1981	FEB 1981	MAR 1981
TOTAL	13,806	11,583	11,132			
REGULAR ENL. AND REENL. - TOTAL	13,804	11,582	11,131			
FIRST ENLISTMENTS	7,562	5,688	5,070			
REENLISTMENTS - TOTAL	6,242	5,894	6,061			
IMMEDIATE REENLISTMENTS	5,631	5,263	5,850			
FORMER REGULAR FORMER RESERVE & N.G.	5,630	5,262	5,849			
	1	1	1			
REENL. OTHER THAN IMMEDIATE	611	631	211			
WITHIN 2-90 DAYS AFTER SEPARATION	-	-	-			
FORMER REGULAR FORMER RESERVE & N.G.	-	-	-			
OVER 90 DAYS AFTER SEPARATION A/	611	631	211			
INDUCTIONS	-	-	-			
RESERVES & N.G. TO ACTIVE DUTY	2	1	1			

A/ INCLUDES ENLISTMENTS OF FORMER COMMISSIONED AND WARRANT OFFICERS

TABLE P29 20-29.34

DEPARTMENT OF DEFENSE
REENLISTMENT RATES BY SERVICE

	A/ "UNADJUSTED" REENLISTMENT RATES FOR TOTAL REGULARS				B/ "ADJUSTED" REENLISTMENT RATES FOR TOTAL REGULARS				REENLISTMENT RATES FOR ARMY INDUCTEES			
	TOTAL DOD	ARMY	NAVY	MARINE CORPS	AIR FORCE	TOTAL DOD	ARMY	NAVY	MARINE CORPS	AIR FORCE	UN- ADJUSTED	AD- JUSTED
FY 1979												
ELIGIBLES	343,032	144,849	74,818	37,016	86,349	322,679	134,924	73,598	36,668	77,489	-	-
REENLISTMENTS	181,338	81,443	35,367	12,398	52,130	162,994	71,505	35,488	12,047	43,954	-	-
REENLISTMENT RATE	52.9%	56.2%	47.3%	33.5%	60.4%	50.5%	53.0%	48.2%	32.9%	56.7%	-	-
FY 1980												
ELIGIBLES	343,425	133,010	86,251	35,032	89,132	334,952	136,721	83,581	34,928	79,722	-	-
REENLISTMENTS	190,260	82,793	41,556	12,388	53,523	183,494	86,494	40,500	12,237	44,263	-	-
REENLISTMENT RATE	55.4%	62.2%	48.2%	35.4%	60.0%	54.8%	63.3%	48.5%	35.0%	55.5%	-	-
FY 1981 (3 MOS)												
ELIGIBLES	82,600	27,277	23,411	6,789	25,123	67,994	19,681	21,645	6,508	20,160	-	-
REENLISTMENTS	50,627	18,110	13,502	2,271	16,744	54,424	28,849	11,769	1,996	11,810	-	-
REENLISTMENT RATE	61.3%	66.4%	57.7%	33.5%	66.6%	80.0%	146.6%	54.4%	30.7%	58.6%	-	-

DEPARTMENT OF DEFENSE
WASHINGTON HEADQUARTERS SERVICES
DIRECTORATE FOR INFORMATION
OPERATIONS AND REPORTS

TABLE P29.20-29.34

DEPARTMENT OF DEFENSE
REENLISTMENT RATES BY SERVICE

	A/ "UNADJUSTED" REENLISTMENT RATES FOR FIRST-TERM REGULARS				B/ "ADJUSTED" REENLISTMENT RATES FOR FIRST-TERM REGULARS					
	TOTAL DOD	ARMY	NAVY	MARINE CORPS	AIR FORCE	TOTAL DOD	ARMY	NAVY	MARINE CORPS	AIR FORCE
FY 1979										
ELIGIBLES	171,034	62,909	45,204	21,029	41,892	159,988	59,604	44,308	20,925	35,151
REENLISTMENTS	64,001	27,027	16,949	4,107	15,918	54,369	23,714	17,080	4,010	9,565
REENLISTMENT RATE	37.4%	43.0%	37.5%	19.5%	38.0%	34.0%	39.8%	38.5%	19.2%	27.2%
FY 1980										
ELIGIBLES	165,525	50,288	53,670	19,364	42,203	161,232	52,231	51,976	19,575	37,450
REENLISTMENTS	64,762	25,434	19,721	4,493	15,114	61,610	27,370	19,138	4,672	10,430
REENLISTMENT RATE	39.1%	50.6%	36.7%	23.2%	35.8%	38.2%	52.4%	36.8%	23.9%	27.9%
FY 1981 (3 MOS)										
ELIGIBLES	38,221	8,042	13,506	5,448	11,225	31,363	4,709	12,520	5,377	8,757
REENLISTMENTS	16,595	4,166	6,164	1,302	4,963	17,488	8,585	5,152	1,235	2,516
REENLISTMENT RATE	43.4%	51.8%	45.6%	23.9%	44.2%	55.8%	182.3%	41.2%	23.0%	28.7%

TABLE P29 20-29 34

DEPARTMENT OF DEFENSE
REENLISTMENT RATES BY SERVICE

	A/ "UNADJUSTED" REENLISTMENT RATES FOR CAREER REGULARS					B/ "ADJUSTED" REENLISTMENT RATES FOR CAREER REGULARS				
	TOTAL DOD	ARMY	NAVY	MARINE CORPS	AIR FORCE	TOTAL DOD	ARMY	NAVY	MARINE CORPS	AIR FORCE
FY 1979										
ELIGIBLES	171,998	81,940	29,614	15,987	44,457	162,691	75,320	29,290	15,743	42,338
REENLISTMENTS	117,337	54,416	18,418	8,291	36,212	108,625	47,791	18,408	8,037	34,389
REENLISTMENT RATE	68.2%	66.4%	62.2%	51.9%	81.5%	66.8%	63.5%	62.8%	51.1%	81.2%
FY 1980										
ELIGIBLES	177,900	82,722	32,581	15,668	46,929	173,720	84,490	31,605	15,353	42,272
REENLISTMENTS	125,498	57,359	21,835	7,895	38,409	121,884	59,124	21,362	7,565	33,833
REENLISTMENT RATE	70.5%	69.3%	67.0%	50.4%	81.8%	70.2%	70.0%	67.6%	49.3%	80.0%
FY 1981 (3 MOS)										
ELIGIBLES	44,379	19,235	9,905	1,341	13,898	36,631	14,972	9,125	1,131	11,403
REENLISTMENTS	34,032	13,944	7,338	969	11,781	36,936	20,264	6,617	761	9,294
REENLISTMENT RATE	76.7%	72.5%	74.1%	72.3%	84.8%	100.8%	135.3%	72.5%	67.3%	81.5%

DEFINITIONS:

A/ "UNADJUSTED REENLISTMENT RATE" - THE RATIO OF TOTAL REENLISTMENTS OCCURRING IN A GIVEN PERIOD TO TOTAL SEPARATIONS ELIGIBLE TO REENLIST IN THE SAME PERIOD, EXPRESSED AS A PERCENTAGE.

B/ "ADJUSTED REENLISTMENT RATE" - THE "UNADJUSTED" RATE ADJUSTED TO EXCLUDE

THE EFFECTS OF: (1) EARLY SEPARATIONS FOR IMMEDIATE REENLISTMENTS AND (2) OTHER EARLY DISCHARGES OF ELIGIBLES UNDER EARLY RELEASE PROGRAMS.

TABLE P309A

DEPARTMENT OF DEFENSE
ACTIVE DUTY MILITARY PERSONNEL STRENGTHS BY REGIONAL AREA AND BY COUNTRY
DECEMBER 31, 1980

REGIONAL AREA/COUNTRY	TOTAL	ARMY	AIR FORCE	NAVY	MARINE CORPS
TOTAL WORLDWIDE	2,050,982	772,351	559,633	531,806	187,192
ASHORE	1,843,707	772,351	559,633	329,711	182,012
AFLCOT	207,275	-	-	202,095	5,180
U.S. TERRITORY AND SPECIAL LOCATIONS	1,575,997	519,722	448,451	451,487	156,337
CONTINENTAL U.S.	1,265,940	467,538	406,091	255,754	136,557
ALASKA	19,522	7,726	10,083	1,524	189
HAWAII	43,043	16,764	6,042	10,866	9,371
AMERICAN SAMOA	7	7	-	-	-
GUAM	8,843	18	3,809	4,638	378
JOHNSTON ATOLL	125	117	8	-	-
MIDWAY ISLANDS	457	-	-	457	-
PUERTO RICO	3,639	381	70	3,011	177
TRUST TERRITORY OF THE PACIFIC ISLANDS	36	36	-	-	-
U.S. MISCELLANEOUS PACIFIC ISLANDS	6	-	-	-	6
VIRGIN ISLANDS OF THE U.S.	10	8	-	2	-
WAKE ISLAND	4	-	4	-	-
TRANSIENTS	79,067	27,127	22,344	20,109	9,487
AFLCOT	155,298	-	-	155,126	172
TOTAL FOREIGN COUNTRIES	474,985	252,629	111,182	80,319	30,855
ASHORE	423,008	252,629	111,182	33,350	25,847
AFLCOT	51,977	-	-	46,969	5,008
(1) WESTERN & SOUTHERN EUROPE	323,379	214,526	77,161	27,078	4,614
AUSTRIA	37	6	6	1	24
BELGIUM*	2,098	1,321	642	108	27
CYPRUS	12	2	-	-	10
DENMARK*	45	5	19	11	10
FINLAND	20	5	3	2	10
FRANCE*	70	16	16	6	32
GERMANY (FED. REPUBLIC & WEST BERLIN)*	242,454	206,456	35,620	273	103
GREECE*	3,097	486	2,246	349	16
GREENLAND*	283	-	283	-	-
ICELAND*	2,612	2	1,022	1,482	106
IRELAND	12	2	4	-	6
ITALY*	11,542	4,035	4,150	3,093	264
LUXEMBOURG*	6	-	-	-	6
NETHERLANDS*	2,351	693	1,632	16	10
NORWAY*	251	36	110	29	76
PORTUGAL*	1,355	61	968	316	10
SPAIN	8,643	31	4,825	3,620	167
SWEDEN	17	1	5	4	7

TABLE P309A

DEPARTMENT OF DEFENSE
ACTIVE DUTY MILITARY PERSONNEL STRENGTHS BY REGIONAL AREA AND BY COUNTRY
DECEMBER 31, 1980

REGIONAL AREA/COUNTRY	TOTAL	ARMY	AIR FORCE	NAVY	MARINE CORPS
SWITZERLAND	44	6	4	2	32
TURKEY*	4,973	1,167	3,721	67	18
UNITED KINGDOM*	24,547	195	21,885	2,144	323
AFFLOAT	18,910	-	-	15,553	3,357
*EUROPEAN NATO	(295,684)	(214,473)	(72,314)	(7,896)	(1,001)
(2) EAST ASIA & PACIFIC	113,230	30,822	31,210	27,377	23,821
AUSTRALIA	657	7	266	377	7
BURMA	11	3	2	-	6
CHINA (MAINLAND)	12	3	2	1	6
HONG KONG	37	6	6	12	13
INDONESIA	49	11	12	13	13
JAPAN (INCLUDING OKINAWA)	45,055	2,315	14,098	6,827	21,815
OKINAWA	(30,212)	(1,190)	(8,965)	(2,633)	(17,424)
MALAYSIA	15	6	2	-	7
NEW ZEALAND	71	4	9	51	7
PHILIPPINES	14,468	31	8,072	5,083	1,282
REPUBLIC OF KOREA	37,452	28,382	8,713	291	66
SINGAPORE	24	4	1	12	7
THAILAND	99	50	27	9	13
AFFLOAT	15,280	-	-	14,701	579
(3) AFRICA, NEAR EAST & SOUTH ASIA	15,027	463	570	12,706	1,288
AFGHANISTAN	6	-	-	-	6
ALGERIA	2	2	-	-	-
BAHRAIN	66	2	-	64	-
BANGLADESH	7	1	-	-	6
BRITISH INDIAN OCEAN TERRITORY	1,412	-	-	1,412	-
CAMEROON	6	2	-	-	6
CONGO	5	-	-	-	5
EGYPT	158	6	101	31	20
ETHIOPIA	10	-	-	-	10
GABON	6	-	-	-	6
GHANA	10	3	-	-	7
INDIA	34	3	4	5	22
IRAN	21	6	3	3	9
ISRAEL	95	40	21	7	27
IVORY COAST	10	3	-	-	7
JORDAN	21	9	5	-	7
KENYA	27	8	7	-	12
KUWAIT	21	14	1	-	6
LEBANON	21	2	4	-	15

TABLE P309A

DEPARTMENT OF DEFENSE
ACTIVE DUTY MILITARY PERSONNEL STRENGTHS BY REGIONAL AREA AND BY COUNTRY
DECEMBER 31, 1980

REGIONAL AREA/COUNTRY	TOTAL	ARMY	AIR FORCE	NAVY	MARINE CORPS
LIBERIA	20	5	3	5	7
MADAGASCAR	8	-	-	1	7
MALAWI	2	2	-	-	-
MALI	6	-	-	-	6
MAURITIUS	6	-	-	-	6
MOROCCO	39	9	6	4	20
NEPAL	10	2	-	-	8
NIGER	7	-	-	-	7
NIGERIA	14	4	2	-	8
OMAN	2	-	1	-	1
PAKISTAN	27	5	6	1	15
SAUDI ARABIA	752	295	387	57	13
SENEGAL	8	-	-	-	8
SEYCHELLES	4	-	4	-	-
SOMALIA	7	2	-	-	5
SOUTH AFRICA	17	1	3	2	11
SRI LANKA	9	-	-	3	6
SUDAN	14	2	2	-	10
SYRIA	11	2	-	-	9
TANZANIA, UNITED REPUBLIC OF	9	-	-	-	9
TUNISIA	29	17	1	2	9
UPPER VOLTA	6	-	-	-	6
YEMEN (SANA)	17	7	4	-	6
ZAIRE	21	9	5	-	7
ZAMBIA	6	-	-	-	6
AFLOAT	12,036	-	-	11,109	927
(4) WESTERN HEMISPHERE	19,132	6,488	2,197	9,397	1,050
ANTIGUA	124	-	5	119	-
ARGENTINA	26	3	7	6	10
BAHAMAS, THE	44	-	2	36	6
BARBADOS	7	-	-	1	6
BERMUDA	1,344	-	-	1,261	83
BOLIVIA	14	5	2	-	7
BRAZIL	45	10	6	6	23
CANADA	668	9	252	395	12
CHILE	16	2	1	1	12
COLOMBIA	26	6	3	3	14
COSTA RICA	11	2	-	-	9
CUBA (GUANTANAMO)	2,070	-	3	1,617	450
DOMINICAN REPUBLIC	17	3	1	4	9

TABLE P309A

DEPARTMENT OF DEFENSE
ACTIVE DUTY MILITARY PERSONNEL STRENGTHS BY REGIONAL AREA AND BY COUNTRY
DECEMBER 31, 1980

REGIONAL AREA/COUNTRY	TOTAL	ARMY	AIR FORCE	NAVY	MARINE CORPS
ECUADOR	21	4	5	3	9
EL SALVADOR	29	6	3	-	20
GUATEMALA	14	4	1	-	9
GUYANA	6	-	-	-	6
HAITI	10	1	1	-	8
HONDURAS	20	2	9	1	8
JAMAICA	14	-	-	-	14
MEXICO	27	11	3	1	12
NICARAGUA	12	3	1	-	8
PANAMA	8,739	6,399	1,873	326	141
PARAGUAY	10	2	1	1	6
PERU	25	6	7	3	9
URUGUAY	13	4	1	2	6
VENEZUELA	29	6	10	5	8
AFLOAT	5,751	-	-	5,606	145
(5) ANTARCTICA	68	-	-	68	-
(6) EASTERN EUROPE	177	66	23	6	82
BULGARIA	10	2	2	-	6
CZECHOSLOVAKIA	11	1	3	-	7
GERMAN DEMOCRATIC REPUBLIC	52	45	-	-	7
HUNGARY	10	3	1	-	6
POLAND	15	2	2	-	11
ROMANIA	13	3	2	-	8
UNION OF SOVIET SOCIALIST REPUBLICS	46	7	7	5	27
YUGOSLAVIA	20	3	6	1	10
(7) UNDISTRIBUTED	3,972	264	21	3,687	-

NOTE: ASHORE INCLUDES TEMPORARILY SHORE-BASED.

DEPARTMENT OF DEFENSE
WASHINGTON HEADQUARTERS SERVICES
DIRECTORATE FOR INFORMATION
OPERATIONS AND REPORTS
MAR 16, 1981

Section 2

RESERVE MILITARY MANPOWER STATISTICS

TABLE R11.0
 DEPARTMENT OF DEFENSE
 RESERVE COMPONENT STRENGTH SUMMARY

NOVEMBER 30, 1980

TYPE OF DUTY	RESERVES BY RESERVE CATEGORY	
	TOTAL	FNLISTED A/
TOTAL	2,177,167	1,509,595
READY RESERVE		
NOT ON ACTIVE DUTY	1,270,106	1,080,864
ACTIVE STATUS		
INACTIVE STATUS B/	1,264,020	1,075,477
	6,086	5,387
STANDBY RESERVE		
ON ACTIVE STATUS	83,901	9,146
INACTIVE STATUS	23,426	7,503
	60,475	1,643
RETIRED - RETIRED STATUS	823,160	419,585

A/ INCLUDES OFFICER CANDIDATES.

B/ INACTIVE NATIONAL GUARD AND REP'S IN NON-PAY STATUS.

SELECTED RESERVE	RESERVES IN "PAID STATUS"	
	PAY GROUP	ENLISTED
DRILL PAY STATUS		
A, B, C, M, P, T, Q	853,042	735,904
F, U	819,837	703,699
INITIAL ACTIVE DUTY TRAINING	33,205	33,205
TOTAL	116,138	116,138

DEPARTMENT OF DEFENSE
 WASHINGTON HEADQUARTERS SERVICES
 DIRECTORATE FOR INFORMATION
 OPERATIONS AND REPORTS

TABLE R11.0

DEPARTMENT OF DEFENSE
RESERVE COMPONENT STRENGTH SUMMARY

DECEMBER 31, 1980

RESERVES BY RESERVE CATEGORY			
TYPE OF DUTY	TOTAL	OFFICER	ENLISTED A/
TOTAL	2,210,566	687,536	1,523,030
READY RESERVE NOT ON ACTIVE DUTY	1,274,399	189,832	1,084,567
ACTIVE STATUS	1,265,257	188,806	1,076,451
INACTIVE STATUS B/	9,142	1,026	8,116
STANDBY RESERVE ON ACTIVE STATUS	82,792	73,824	8,968
INACTIVE STATUS	23,387	15,971	7,416
	59,405	57,853	1,552
RETIRED - RETIRED STATUS	853,375	423,680	429,495

A/ INCLUDES OFFICER CANDIDATES.

B/ INACTIVE NATIONAL GUARD AND REP'S IN NON-PAY STATUS.

RESERVES IN "PAID STATUS"			
	PAY GROUP	TOTAL	OFFICER ENLISTED
SELECTED RESERVE		851,529	736,027
DRILL PAY STATUS	A, B, C, M, P, T, O	821,896	706,394
INITIAL ACTIVE DUTY TRAINING	F, U	29,633	29,633

DEPARTMENT OF DEFENSE
WASHINGTON HEADQUARTERS SERVICES
DIRECTORATE FOR INFORMATION
OPERATIONS AND REPORTS

TABLE R12.0

DEPARTMENT OF DEFENSE
RESERVE STRENGTH - OFFICER AND ENLISTED
NOT ON ACTIVE DUTY

DATE	TOTAL	OFFICERS	ENLISTED A/
31 OCT 1980	2,178,423	667,943	1,510,480
30 NOV 1980	2,177,167	667,572	1,509,595

A/ INCLUDES OFFICER CANDIDATES

DEPARTMENT OF DEFENSE
WASHINGTON HEADQUARTERS SERVICES
DIRECTORATE FOR INFORMATION
OPERATIONS AND REPORTS

TABLE R12.0

DEPARTMENT OF DEFENSE
RESERVE STRENGTH - OFFICER AND ENLISTED
NOT ON ACTIVE DUTY

DATE	TOTAL	OFFICERS	ENLISTED A/
31 OCT 1980	2,178,423	667,943	1,510,480
30 NOV 1980	2,177,167	667,572	1,509,595
31 DEC 1980	2,210,566	687,536	1,523,030

A/ INCLUDES OFFICER CANDIDATES.

DEPARTMENT OF DEFENSE
WASHINGTON HEADQUARTERS SERVICES
DIRECTORATE FOR INFORMATION
OPERATIONS AND REPORTS

TABLE R13.0

DEPARTMENT OF DEFENSE
 READY RESERVE AND ACTIVE DUTY STRENGTH COMPARED TO STATUTORY LIMITATION
 NOVEMBER 30, 1980

	TOTAL	ON ACTIVE DUTY	NOT ON ACTIVE DUTY
STATUTORY READY RESERVE LIMITATION A/	2,900,000		
DIFFERENCE	1,438,639		
READY RESERVE AND ACTIVE DUTY STRENGTH	1,461,361	170,828	1,290,533
COAST GUARD RESERVE	21,562	1,135	20,427
DOD RESERVE	1,439,799	169,693	1,270,106
ARMY			
NATIONAL GUARD B/	845,371	53,801	791,570
ARMY RESERVE	377,988	1,181	376,807
	467,383	52,620	414,763
NAVAL RESERVE	253,232	66,460	186,772
MARINE CORPS RESERVE	96,527	5,112	91,415
AIR FORCE			
AIR NATIONAL GUARD C/	244,669	44,320	200,349
AIR FORCE RESERVE	96,874	304	96,570
	147,795	44,016	103,779

A/ SECTION 205(B), ARMED FORCES RESERVE ACT OF 1952, AS AMENDED.
 B/ INCLUDES "INACTIVE NATIONAL GUARD" NUMBERING 6,086 AND REP'S NUMBERING 1,548.
 C/ INCLUDES REP'S IN A NON-PAY STATUS NUMBERING 247.

DEPARTMENT OF DEFENSE
 WASHINGTON HEADQUARTERS SERVICES
 DIRECTORATE FOR INFORMATION
 OPERATIONS AND REPORTS

TABLE R13.0

DEPARTMENT OF DEFENSE
 READY RESERVE AND ACTIVE DUTY STRENGTH COMPARED TO STATUTORY LIMITATION
 DECEMBER 31, 1980

	TOTAL	ON ACTIVE DUTY	NOT ON ACTIVE DUTY
STATUTORY READY RESERVE LIMITATION A/	2,900,000		
DIFFERENCE	1,434,034		
READY RESERVE AND ACTIVE DUTY STRENGTH	1,465,966	170,218	1,295,748
COAST GUARD RESERVE	22,487	1,138	21,349
DOD RESERVE	1,443,479	169,080	1,274,399
ARMY	849,415	53,755	795,660
NATIONAL GUARD B/	379,987	1,076	378,911
ARMY RESERVE	469,428	52,679	416,749
NAVAL RESERVE	254,471	66,927	187,544
MARINE CORPS RESERVE	95,224	4,989	90,235
AIR FORCE	244,369	43,409	200,960
AIR NATIONAL GUARD C/	96,984	289	96,695
AIR FORCE RESERVE	147,385	43,120	104,265

A/ SECTION 205(B), ARMED FORCES RESERVE ACT OF 1952, AS AMENDED.
 B/ INCLUDES "INACTIVE NATIONAL GUARD" NUMBERING 9,142 AND REP'S NUMBERING 1,707.
 C/ INCLUDES REP'S IN A NON-PAY STATUS NUMBERING 219

DEPARTMENT OF DEFENSE
 WASHINGTON HEADQUARTERS SERVICES
 DIRECTORATE FOR INFORMATION
 OPERATIONS AND REPORTS

TABLE R14.0

DEPARTMENT OF DEFENSE
RESERVE COMPONENT PERSONNEL BY RESERVE CATEGORY
NOT ON ACTIVE DUTY

TOTAL

DATE	TOTAL	READY	STANDBY	RETIRED
31 OCT 1980	2,178,423	1,270,690	85,181	822,552
30 NOV 1980	2,177,167	1,270,106	83,901	823,160

DEPARTMENT OF DEFENSE
WASHINGTON HEADQUARTERS SERVICES
DIRECTORATE FOR INFORMATION
OPERATIONS AND REPORTS

TABLE R14.0

DEPARTMENT OF DEFENSE
RESERVE COMPONENT PERSONNEL BY RESERVE CATEGORY
NOT ON ACTIVE DUTY

OFFICERS

DATE	TOTAL	READY	STANDBY	RETIRED
31 OCT 1980	667,943	188,850	75,683	403,410
30 NOV 1980	667,572	189,242	74,755	403,575

TABLE R14.0

DEPARTMENT OF DEFENSE
RESERVE COMPONENT PERSONNEL BY RESERVE CATEGORY
NOT ON ACTIVE DUTY

ENLISTED A/

DATE	TOTAL	READY	STANDBY	RETIRED
31 OCT 1980	1,510,480	1,081,840	9,498	419,142
30 NOV 1980	1,509,595	1,080,864	9,146	419,585

A/ INCLUDES OFFICER CANDIDATES.

TABLE R14.0

DEPARTMENT OF DEFENSE
RESERVE COMPONENT PERSONNEL BY RESERVE CATEGORY
NOT ON ACTIVE DUTY

DATE	TOTAL			STANDBY	RETIRED
	TOTAL	READY	STANDBY		
31 OCT 1980	2,178,423	1,270,690	85,181	822,552	
30 NOV 1980	2,177,167	1,270,106	83,901	823,160	
31 DEC 1980	2,210,566	1,274,399	82,792	853,375	

DEPARTMENT OF DEFENSE
WASHINGTON HEADQUARTERS SERVICES
DIRECTORATE FOR INFORMATION
OPERATIONS AND REPORTS

TABLE R14.0

DEPARTMENT OF DEFENSE
RESERVE COMPONENT PERSONNEL BY RESERVE CATEGORY
NOT ON ACTIVE DUTY

OFFICERS

DATE	TOTAL	READY	STANDBY	RETIRED
31 OCT 1980	667,943	188,850	75,683	403,410
30 NOV 1980	667,572	189,242	74,755	403,575
31 DEC 1980	687,536	189,832	73,824	423,880

TABLE R14.0

DEPARTMENT OF DEFENSE
RESERVE COMPONENT PERSONNEL BY RESERVE CATEGORY
NOT ON ACTIVE DUTY

ENLISTED A/

DATE	TOTAL	READY	STANDBY	RETIRED
31 OCT 1980	1,510,480	1,081,840	9,498	419,142
30 NOV 1980	1,509,595	1,080,864	9,146	419,585
31 DEC 1980	1,523,030	1,084,567	8,968	429,495

A/ INCLUDES OFFICER CANDIDATES.

TABLE R18.0

DEPARTMENT OF DEFENSE
SELECTED RESERVE

DATE	TOTAL	DRILL PAY STATUS	INITIAL ACTIVE DUTY TRAINING
31 OCT 1980	850,210	817,292	32,918
30 NOV 1980	853,042	819,837	33,205

DEPARTMENT OF DEFENSE
WASHINGTON HEADQUARTERS SERVICES
DIRECTORATE FOR INFORMATION
OPERATIONS AND REPORTS

TABLE R18.0

DEPARTMENT OF DEFENSE
SELECTED RESERVE

DATE	TOTAL	DRILL PAY STATUS	INITIAL ACTIVE DUTY TRAINING
31 OCT 1980	850,210	817,292	32,918
30 NOV 1980	853,042	819,837	33,205
31 DEC 1980	851,529	821,896	29,633

DEPARTMENT OF DEFENSE
WASHINGTON HEADQUARTERS SERVICES
DIRECTORATE FOR INFORMATION
OPERATIONS AND REPORTS

TABLE R21.0

DEPARTMENT OF DEFENSE
RESERVE PERSONNEL ON ACTIVE DUTY BY COMPONENT

NOVEMBER 30, 1980

COMPONENT/PERSONNEL	TOTAL	OFFICER	ENLISTED A/
TOTAL DEPARTMENT OF DEFENSE	169,693	114,666	55,027
ARMY - TOTAL	53,801	50,334	3,467
NATIONAL GUARD OF THE U. S.	1,181	424	757
ARMY RESERVE	52,620	49,910	2,710
NAVAL RESERVE	66,460	16,245	50,215
MARINE CORPS RESERVE	5,112	4,575	537
AIR FORCE - TOTAL	44,320	43,512	808
AIR NATIONAL GUARD OF THE U. S.	304	164	140
AIR FORCE RESERVE	44,016	43,348	668

A/ INCLUDES OFFICER CANDIDATES.

DEPARTMENT OF DEFENSE
WASHINGTON HEADQUARTERS SERVICES
DIRECTORATE FOR INFORMATION
OPERATIONS AND REPORTS

TABLE R21.0

DEPARTMENT OF DEFENSE
RESERVE PERSONNEL ON ACTIVE DUTY BY COMPONENT

DECEMBER 31, 1980

COMPONENT / PERSONNEL	TOTAL	OFFICER	ENLISTED A/
TOTAL DEPARTMENT OF DEFENSE	169,080	114,026	55,054
ARMY - TOTAL	53,755	50,579	3,176
NATIONAL GUARD OF THE U. S.	1,076	413	663
ARMY RESERVE	52,679	50,166	2,513
NAVAL RESERVE	66,927	16,340	50,587
MARINE CORPS RESERVE	4,989	4,488	501
AIR FORCE - TOTAL	43,409	42,619	790
AIR NATIONAL GUARD OF THE U. S.	289	165	124
AIR FORCE RESERVE	43,120	42,454	666

A/ INCLUDES OFFICER CANDIDATES.

DEPARTMENT OF DEFENSE
WASHINGTON HEADQUARTERS SERVICES
DIRECTORATE FOR INFORMATION
OPERATIONS AND REPORTS

TABLE R22.0

DEPARTMENT OF DEFENSE
RESERVE STRENGTH ON ACTIVE DUTY A/

DATE	TOTAL DOD	ARMY				AIR FORCE		
		NATIONAL GUARD	ARMY RESERVE	NAVAL RESERVE	MARINE CORPS RESERVE	AIR NATIONAL GUARD	AIR FORCE RESERVE	
31 OCT 1980	168,493	1,265	52,726	65,322	5,165	311	43,704	
30 NOV 1980	169,693	1,181	52,620	66,460	5,112	304	44,016	

A/ CONTINUOUS OR EXTENDED ACTIVE DUTY.
EXCLUDES ACTIVE DUTY FOR RESERVE TRAINING.

TABLE R22.0

DEPARTMENT OF DEFENSE
RESERVE STRENGTH ON ACTIVE DUTY A/

DATE	TOTAL DOD	ARMY			NAVAL RESERVE	MARINE CORPS RESERVE	AIR FORCE	
		NATIONAL GUARD	ARMY RESERVE	AIR NATIONAL GUARD			AIR FORCE RESERVE	
31 OCT 1980	168,493	1,265	52,726	65,322	5,165	311	43,704	
30 NOV 1980	169,693	1,181	52,620	66,460	5,112	304	44,016	
31 DEC 1980	169,080	1,076	52,679	66,927	4,989	289	43,120	

A/ CONTINUOUS OR EXTENDED ACTIVE DUTY.
EXCLUDES ACTIVE DUTY FOR RESERVE TRAINING.

DEPARTMENT OF DEFENSE
WASHINGTON HEADQUARTERS SERVICES
DIRECTORATE FOR INFORMATION
OPERATIONS AND REPORTS

TABLE R23 0

DEPARTMENT OF DEFENSE
RESERVE PERSONNEL BY COMPONENT AND CATEGORY
NOT ON ACTIVE DUTY

NOVEMBER 30, 1980

COMPONENT/ PERSONNEL	TOTAL	NAT'L GUARD OF THE U. S. A/	ARMY RESERVE	NAVAL RESERVE	MARINE CORPS RESERVE	AIR B/ NAT'L GUARD OF THE U. S.	AIR FORCE RESERVE
TOTAL	2,177,167	376,807	848,774	337,534	101,664	96,570	415,818
OFFICER	667,572	37,983	275,422	162,234	13,900	11,915	166,118
ENLISTED C/	1,509,595	338,824	573,352	175,300	87,764	84,655	249,700
READY RESERVE	1,270,106	376,807	414,763	186,772	91,115	96,570	103,779
OFFICER	189,242	37,983	76,056	35,535	6,245	11,915	21,508
ENLISTED C/	1,080,864	338,824	338,707	151,237	85,170	84,655	82,271
STANDBY RESERVE	83,901	-	18,783	21,849	1,927	-	41,342
OFFICER	74,755	-	17,928	19,111	1,704	-	36,012
ENLISTED	9,146	-	855	2,738	223	-	5,330
ACTIVE STATUS	23,426	-	8,752	2,703	1,836	-	10,135
OFFICER	15,923	-	7,898	73	1,613	-	6,339
ENLISTED	7,503	-	854	2,630	223	-	3,796
INACTIVE STATUS	60,475	-	10,031	19,146	91	-	31,207
OFFICER	58,832	-	10,030	19,038	91	-	29,673
ENLISTED	1,643	-	1	108	-	-	1,534
RETIRED RESERVE	823,160	-	415,228	128,913	8,322	-	270,697
OFFICER	403,575	-	181,438	107,588	5,951	-	108,598
ENLISTED	419,585	-	233,790	21,325	2,371	-	162,099

A/ INCLUDES "INACTIVE NATIONAL GUARD" NUMERING 6,086 TOTAL, 699 OFFICERS, 5,387 ENLISTED AND RESERVE ENLISTMENT PROGRAM (REPS) IN A NON-PAY STATUS NUMERING 1,548.

B/ INCLUDES REPS IN A NON-PAY STATUS NUMERING 247.

C/ INCLUDES OFFICER CANDIDATES.

DEPARTMENT OF DEFENSE
WASHINGTON HEADQUARTERS SERVICES
DIRECTORATE FOR INFORMATION
OPERATIONS AND REPORTS

TABLE R23.0

DEPARTMENT OF DEFENSE
RESERVE PERSONNEL BY COMPONENT AND CATEGORY
NOT ON ACTIVE DUTY

DECEMBER 31, 1980

COMPONENT/ PERSONNEL	TOTAL	NAT'L GUARD OF THE U.S. A/	ARMY RESERVE	NAVAL RESERVE	MARINE CORPS RESERVE	AIR B/	
						NAT'L GUARD OF THE U.S.	AIR FORCE RESERVE
TOTAL	2,210,566	378,911	881,680	337,350	100,528	96,695	415,402
OFFICER	687,536	38,001	295,508	161,648	13,927	11,944	166,508
ENLISTED C/	1,523,030	340,910	586,172	175,702	86,601	84,751	248,894
READY RESERVE	1,274,399	378,911	416,749	187,544	90,235	96,695	104,265
OFFICER	189,832	38,001	76,337	35,844	6,237	11,944	21,469
ENLISTED C/	1,084,567	340,910	340,412	151,700	83,998	84,751	82,796
STANDBY RESERVE	82,792	-	18,553	20,779	1,933	-	41,527
OFFICER	73,824	-	17,625	18,181	1,714	-	36,304
ENLISTED	8,968	-	928	2,598	219	-	5,223
ACTIVE STATUS	23,387	-	8,731	2,565	1,842	-	10,249
OFFICER	15,971	-	7,804	74	1,623	-	6,470
ENLISTED	7,416	-	927	2,491	219	-	3,779
INACTIVE STATUS	59,405	-	9,822	18,214	91	-	31,278
OFFICER	57,853	-	9,821	18,107	91	-	29,834
ENLISTED	1,552	-	1	107	-	-	1,444
RETIRED RESERVE	853,375	-	446,378	129,027	8,360	-	269,610
OFFICER	423,880	-	201,546	107,623	5,976	-	108,735
ENLISTED	429,495	-	244,832	21,404	2,384	-	160,875

A/ INCLUDES "INACTIVE NATIONAL GUARD" NUMBERING 9,142 TOTAL, 1026 OFFICERS, 8,116 ENLISTED AND RESERVE ENLISTMENT PROGRAM (REPS) IN A NON-PAY STATUS NUMBERING 1,707.

B/ INCLUDES REPS IN A NON-PAY STATUS NUMBERING 219.

C/ INCLUDES OFFICER CANDIDATES.

DEPARTMENT OF DEFENSE
WASHINGTON HEADQUARTERS SERVICES
DIRECTORATE FOR INFORMATION
OPERATIONS AND REPORTS

TABLE R24.0

DEPARTMENT OF DEFENSE
RESERVE STRENGTH NOT ON ACTIVE DUTY A/

DATE	TOTAL DOD	ARMY				AIR FORCE		
		B/ NATIONAL GUARD	ARMY RESERVE	NAVAL RESERVE	MARINE CORPS RESERVE	AIR NATIONAL GUARD	AIR FORCE RESERVE	
31 OCT 1980	2,178,423	375,199	850,134	337,302	102,455	96,659	416,674	
30 NOV 1980	2,177,167	376,807	848,774	337,534	101,664	96,570	415,818	

A/ INCLUDES RESERVES ON ACTIVE DUTY
FOR RESERVE TRAINING PURPOSES.
B/ INCLUDES "INACTIVE" NATIONAL GUARD.

DEPARTMENT OF DEFENSE
WASHINGTON HEADQUARTERS SERVICES
DIRECTORATE FOR INFORMATION
OPERATIONS AND REPORTS

TABLE R24.0

DEPARTMENT OF DEFENSE
RESERVE STRENGTH NOT ON ACTIVE DUTY A/

DATE	TOTAL DOD	ARMY			AIR FORCE		
		B/ NATIONAL GUARD	ARMY RESERVE	NAVAL RESERVE	MARINE CORPS RESERVE	AIR NATIONAL GUARD	AIR FORCE RESERVE
31 OCT 1980	2,178,423	375,199	850,134	337,302	102,455	96,659	416,674
30 NOV 1980	2,177,167	376,807	848,774	337,534	101,664	96,570	415,818
31 DEC 1980	2,210,566	378,911	881,680	337,350	100,528	96,695	415,402

A/ INCLUDES RESERVES ON ACTIVE DUTY
FOR RESERVE TRAINING PURPOSES.

B/ INCLUDES "INACTIVE" NATIONAL GUARD.

DEPARTMENT OF DEFENSE
WASHINGTON HEADQUARTERS SERVICES
DIRECTORATE FOR INFORMATION
OPERATIONS AND REPORTS

TABLE R26.5

DEPARTMENT OF DEFENSE
SELECTED RESERVE DRILL PAY STRENGTH

NOVEMBER 30, 1980

COMPONENT/ PERSONNEL	TOTAL	DRILL PAY STATUS A/	INITIAL ACTIVE DUTY TRAINING B/
TOTAL DOD	853,042	819,837	33,205
OFFICERS	116,138	116,138	-
ENLISTED	736,904	703,699	33,205
ARMY NATIONAL GUARD	369,173	353,066	16,107
OFFICERS	37,284	37,284	-
ENLISTED	331,889	315,782	16,107
ARMY RESERVE	207,057	198,521	8,536
OFFICERS	35,657	35,657	-
ENLISTED	171,400	162,864	8,536
NAVAL RESERVE	86,594	85,657	937
OFFICERS	15,934	15,934	-
ENLISTED	70,660	69,723	937
MARINE CORPS RESERVE	35,417	31,055	4,362
OFFICERS	2,391	2,391	-
ENLISTED	33,026	28,664	4,362
AIR NATIONAL GUARD	96,323	94,010	2,313
OFFICERS	11,915	11,915	-
ENLISTED	84,408	82,095	2,313
AIR FORCE RESERVE	58,478	57,528	950
OFFICERS	12,957	12,957	-
ENLISTED	45,521	44,571	950

A/ INCLUDES PAY GROUPS A, B, C, M, P, T, Q.

B/ INCLUDES PAY GROUPS F AND U.

DEPARTMENT OF DEFENSE
WASHINGTON HEADQUARTERS SERVICES
DIRECTORATE FOR INFORMATION
OPERATIONS AND REPORTS

TABLE R26.5

DEPARTMENT OF DEFENSE
SELECTED RESERVE DRILL PAY STRENGTH

DECEMBER 31, 1980

COMPONENT/ PERSONNEL	TOTAL	DRILL PAY STATUS A/	INITIAL ACTIVE DUTY TRAINING B/
TOTAL DOD	851,529	821,896	29,633
OFFICERS	115,502	115,502	-
ENLISTED	736,027	706,394	29,633
ARMY NATIONAL GUARD	368,062	353,353	14,709
OFFICERS	36,975	36,975	-
ENLISTED	331,087	316,378	14,709
ARMY RESERVE	208,165	201,001	7,164
OFFICERS	35,502	35,502	-
ENLISTED	172,663	165,499	7,164
NAVAL RESERVE	87,110	86,103	1,007
OFFICERS	16,108	16,108	-
ENLISTED	71,002	69,995	1,007
MARINE CORPS RESERVE	35,207	31,508	3,699
OFFICERS	2,407	2,407	-
ENLISTED	32,800	29,101	3,699
AIR NATIONAL GUARD	94,871	92,666	2,205
OFFICERS	11,628	11,628	-
ENLISTED	83,243	81,038	2,205
AIR FORCE RESERVE	58,114	57,265	849
OFFICERS	12,882	12,882	-
ENLISTED	45,232	44,383	849

A/ INCLUDES PAY GROUPS A, B, C, M, P, T, Q.

B/ INCLUDES PAY GROUPS F AND U.

DEPARTMENT OF DEFENSE
WASHINGTON HEADQUARTERS SERVICES
DIRECTORATE FOR INFORMATION
OPERATIONS AND REPORTS

