

AD-A153 286

MILITARY MANPOWER STATISTICS, APRIL, FY-81. (U)  
WASHINGTON HEADQUARTERS SERVICE (DOD) DIR FOR INFO  
OP & RPTS. APR 81. DIOR/MO3-81/07

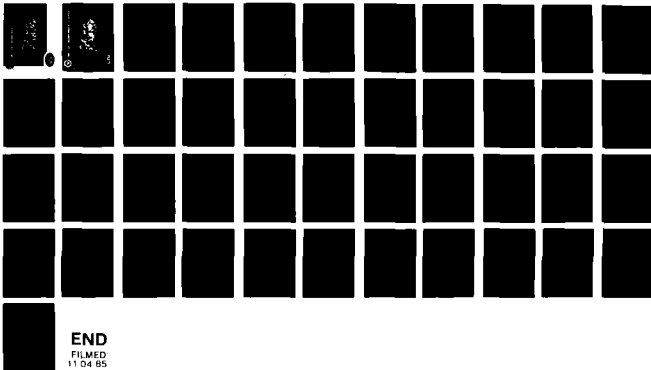
17A

UNCLASSIFIED

F/G 5/9

N/L

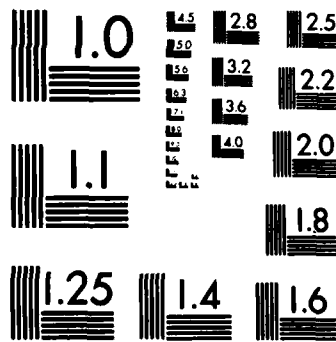
1 OF 1  
AD-A153 286



END  
FILMED  
11 04 85

# 1 OF 1

# AD-A153 286



MICROCOPY RESOLUTION TEST CHART  
NATIONAL BUREAU OF STANDARDS-1963-A

**THIS REPORT IS UNCLASSIFIED AND  
ITS DISTRIBUTION IS UNLIMITED**



# Department of Defense **MILITARY MANPOWER STATISTICS**

APRIL 1981

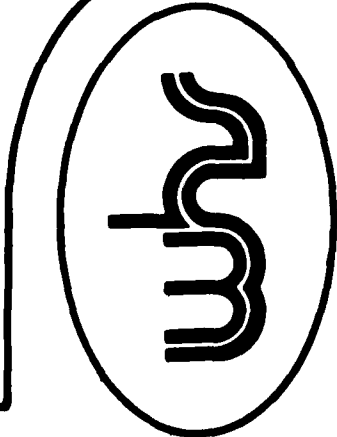




Department of Defense  
**MILITARY MANPOWER STATISTICS**

OSD

MAN-POWER AND OPERATIONS REPORTS (MOR)



DIRECTORATE FOR INFORMATION  
 OPERATIONS AND REPORTS (DIOR)  
 THE PENTAGON, WASHINGTON, D.C.

## F O R E W O R D

MILITARY MANPOWER STATISTICS (MMS) is a monthly publication prepared by the Washington Headquarters Services, Directorate for Information Operations and Reports (WHS/DIOR) of the Office of the Secretary of Defense.

The MMS report presents audited statistical data pertaining to military personnel on active duty and personnel in military reserve components, for the current fiscal year on a monthly basis. The March, June, September, and December issues contain quarterly summaries of certain military manpower data as annotated in the Table of Contents. Although these tables are revised quarterly, they are published without changes in two subsequent monthly editions of this publication. The publication is generated from a computerized data base developed and maintained by the Manpower Management Information Division of WHS/DIOR.

The report is approved for public release: distribution unlimited, at cost. Requests for additional copies and changes in distribution should be addressed to the Director, Washington Headquarters Services, Room 3E843, The Pentagon, Washington, D.C. 20301.

## G L O S S A R Y   O F   T E R M S

Active Duty. Full-time duty in the active service of a uniformed service, including duty on the active list, full-time training duty, annual training duty, and attendance while in the active service, at a school designated as a service school by law or by the Secretary concerned.

Actual Strength. The number of personnel in, or projected to be in, an organization or account at a specified point in time.

Armed Forces of the United States. Includes the Army, Navy, Air Force, Marine Corps, and Coast Guard, and all components thereof.

Assigned Strength. Actual strength of an entire service, not necessarily equal to combined unit actual strengths since individuals may be assigned but not joined.

Authorized Strength. The total strength authorized by Congress (for Internal Service applications only). Authorized strength may be used synonymously with documented strength as defined below.

Cadet or Midshipman Enrolled in the Reserve Officers Training Corps (ROTC) Program. A member of the Senior Reserve Officer Training Corps (SROTC) under 10 U.S.C. 2107 for tuition, fees, books, and laboratory expenses.

Continental United States. Unless otherwise qualified, means the 48 contiguous States and the District of Columbia.

Enlisted Member. A person enlisted, enrolled, or conscripted into the military service.

Enlistment. (1) A voluntary entrance into military service under enlisted status, as distinguished from induction through Selective Service.

(2) A period of time, contractual or prescribed by law, which enlisted members serve between enrollment and discharge.

Officer. A commissioned or warrant officer.

Reserve Components. The Army National Guard of the United States, Army Reserve, Naval Reserve, Marine Corps Reserve, Air National Guard of the United States, Air Force Reserve, Coast Guard Reserve, and the Reserve Corps of the Public Health Service.

Service Academy Cadet or Midshipman. A person in training at one of the service academies to become a commissioned officer.

Transients. All military members who are not available for duty while executing permanent change of station (PCS) orders. Transients shall comprise all military personnel in a travel, proceed, leave enroute, or temporary duty enroute status on PCS orders to execute an accession, separation, training, operational, or rotational move.

Warrant Officer. A person who holds a commission or warrant in a warrant officer grade.

T A B L E O F C O N T E N T S

<u>Section 1</u>	<u>Active Duty Military Manpower Statistics</u>
Table P10	Military/Civilian Personnel
Table P11	Department of Defense Manpower Comparison
Table P22.1	Total Active Duty Military Personnel by Service
Table P23.1	Active Duty Officer Personnel and Percent of Total Military Personnel by Service
Table P23.3	Total Active Duty Military Personnel by Type
Table P23.4	Army Active Duty Military Personnel by Type
Table P23.5	Navy Active Duty Military Personnel by Type
Table P23.6	Marine Corps Active Duty Military Personnel by Type
Table P23.7	Air Force Active Duty Military Personnel by Type
Table P23.41	Army Active Duty Military Personnel
Table P23.51	Navy Active Duty Military Personnel
Table P23.61	Marine Corps Active Duty Military Personnel
Table P23.71	Air Force Active Duty Military Personnel
Table P25.6	Women Military Personnel on Active Duty Officers and Enlisted by Service

Table P26.0	Military Personnel on Active Duty by Grade in Which Serving
*Table P26.02	Female Military Personnel on Active Duty by Grade in Which Serving
Table P26.04	Military Personnel on Active Duty by Grade in Which Serving - Regular
Table P26.05	Military Personnel on Active Duty by Grade in Which Serving - Reserve
Table P27.1	Summary of Enlisted Personnel Procurement
Table P27.21	Army Enlisted Personnel Procurement
Table P27.22	Navy Enlisted Personnel Procurement
Table P27.23	Marine Corps Enlisted Personnel Procurement
Table P27.24	Air Force Enlisted Personnel Procurement
*Table P29.20-29-34	Reenlistment Rates by Service
*Table P309A	Active Duty Military Personnel Strength by Regional Area and by Country

\* Prepared quarterly, this table will be updated in March, June, September and December.

**Section 2**      **Reserve Military Manpower Statistics**

<b>Table R11.0</b>	<b>Reserve Component Strength Summary</b>
<b>Table R12.0</b>	<b>Reserve Strength - Officer and Enlisted Not on Active Duty</b>
<b>Table R13.0</b>	<b>Ready Reserve and Active Duty Strength Compared to Statutory Limitation</b>
<b>Table R14.0</b>	<b>Reserve Component Personnel by Reserve Category Not on Active Duty - Total</b>
<b>Table R14.0</b>	<b>Reserve Component Personnel by Reserve Category Not on Active Duty - Officers</b>
<b>Table R14.0</b>	<b>Reserve Component Personnel by Reserve Category Not on Active Duty - Enlisted</b>
<b>Table R18.0</b>	<b>Selected Reserve</b>
<b>Table R21.0</b>	<b>Reserve Personnel on Active Duty by Component</b>
<b>Table R22.0</b>	<b>Reserve Strength on Active Duty</b>
<b>Table R23.0</b>	<b>Reserve Personnel by Component and Category Not on Active Duty</b>
<b>Table R24.0</b>	<b>Reserve Strength Not on Active Duty</b>
<b>Table R26.5</b>	<b>Selected Reserve Drill Pay Strength</b>

**Section 1**

**ACTIVE DUTY MILITARY MANPOWER STATISTICS**

TABLE P10

DEPARTMENT OF DEFENSE  
MILITARY/CIVILIAN PERSONNEL

	TOTAL DOD	ARMY	NAVY	MARINE CORPS	AIR FORCE
1. ACTIVE DUTY MILITARY AS OF 30 APR 1981					
OFFICER	280,505	98,517	64,573	18,216	99,199
ENLISTED	1,767,238	671,761	466,431	168,642	460,404
ACADEMY CADETS	12,673	4,116	4,402	-	4,155
TOTAL ACTIVE DUTY MILITARY	2,060,416	774,394	535,406	186,858	563,758
2. GUARD AND RESERVES AS OF 30 APR 1981					
NATIONAL GUARD IN PAID STATUS	487,634	389,786	-	-	97,848
	477,489	379,804	-	-	97,685
RESERVES IN PAID STATUS	1,729,750	884,698	342,469	96,568	406,015
	399,243	216,761	87,781	35,390	59,311
TOTAL GUARJ AND RESERVES IN PAID STATUS	2,217,384	1,274,484	342,469	96,568	503,863
	876,732	596,565	87,781	35,390	156,996
3. OFFICER TRAINING IN COLLEGES A/ AS OF OCTOBER 1980					
	102,626	71,240	8,300	-	23,086
4. CIVILIAN PERSONNEL - MILITARY AND CIVIL FUNCTIONS B/					
AS OF 30 APR 1981	TOTAL DOD	ARMY	C/ NAVY	AIR FORCE	OTHER D/ DEFENSE AGENCIES
DIRECT HIRE	979,838	349,964	318,691	232,668	78,515
INDIRECT HIRE	74,911	49,231	10,732	13,223	1,725
TOTAL CIVILIAN PERSONNEL	1,054,749	399,195	329,423	245,891	80,240

A/ EXCLUDES 179,194 IN JUNIOR DIVISION, MILITARY  
SCHOOLS AND NATIONAL DEFENSE CADETS CORPS.B/ INCLUDES CIVIL FUNCTIONS EMPLOYMENT OF  
34,155 ARMY AND AIR FORCE, ALSO INCLUDES  
DISADVANTAGED YOUTH EMPLOYEES.

C/ INCLUDES MARINE CORPS PERSONNEL.

D/ INCLUDES OSD/JCS.

DEPARTMENT OF DEFENSE  
WASHINGTON HEADQUARTERS SERVICES  
DIRECTORATE FOR INFORMATION  
OPERATIONS AND REPORTS

TABLE P11  
 DOD MANPOWER COMPARISON  
 (MILITARY & CIVIL FUNCTIONS)

DATE	TOTAL DOD	ARMY			AIR FORCE			NAVY AND MARINE CORPS			A/ OSD/ JCS	
		MILI-TARY	CIVIL- IAN	TOTAL	MILI-TARY	CIVIL- IAN	TOTAL	NAVY MILI-TARY	MARINE CORPS MILI-TARY	B/ CIVIL- IAN		TOTAL
31 OCT 80	3,020,228	777,581	348,187	1,125,768	560,405	233,436	793,841	526,512	188,239	311,514	1,026,265	74,354
30 NOV 80	3,027,191	776,357	347,504	1,123,861	560,892	233,425	794,317	529,993	188,248	313,173	1,031,414	77,599
31 DEC 80	3,023,757	772,351	347,331	1,119,682	559,633	233,540	793,173	531,582	187,192	314,610	1,033,384	77,518
31 JAN 81	3,028,540	773,852	346,548	1,120,400	561,460	231,667	793,127	532,453	187,785	317,163	1,037,401	77,612
28 FEB 81	3,033,085	774,771	346,306	1,121,077	562,661	231,097	793,758	535,878	188,073	316,766	1,040,717	77,533
31 MAR 81	3,036,328	774,321	347,321	1,121,642	563,506	231,806	795,312	536,483	187,740	317,254	1,041,477	77,897
30 APR 81	3,040,254	774,394	349,964	1,124,358	563,758	232,668	796,426	535,406	186,858	318,691	1,040,955	78,515

A/ CIVILIAN PERSONNEL. MILITARY PERSONNEL ASSIGNED TO OSD, OJCS AND OTHER DEFENSE ACTIVITIES ARE REPORTED BY THEIR RESPECTIVE SERVICES.

B/ -TOTAL PAID EMPLOYEES- AS REPORTED OFFICIALLY TO THE OFFICE OF PERSONNEL MANAGEMENT; EXCLUDES OVERSEAS SUPPORT PERSONNEL (INDIRECT HIRE).

DEPARTMENT OF DEFENSE  
 WASHINGTON HEADQUARTERS SERVICES  
 DIRECTORATE FOR INFORMATION  
 OPERATIONS AND REPORTS

TABLE P22.1

DEPARTMENT OF DEFENSE  
TOTAL ACTIVE DUTY MILITARY PERSONNEL BY SERVICE

DATE	TOTAL DOD	ARMY	NAVY	MARINE CORPS	AIR FORCE
OCT 31, 1980	2,052,737	777,581	526,512	188,239	560,405
NOV 30, 1980	2,055,490	776,357	529,993	188,248	560,892
DEC 31, 1980	2,050,758	772,351	531,582	187,192	559,633
JAN 31, 1981	2,055,550	773,852	532,453	187,785	561,460
FEB 28, 1981	2,061,383	774,771	535,878	188,073	562,661
MAR 31, 1981	2,062,050	774,321	536,483	187,740	563,506
APR 30, 1981	2,060,416	774,394	535,406	186,858	563,758

DEPARTMENT OF DEFENSE  
WASHINGTON HEADQUARTERS SERVICES  
DIRECTORATE FOR INFORMATION  
OPERATIONS AND REPORTS

TABLE P23.1

DEPARTMENT OF DEFENSE  
ACTIVE DUTY OFFICER PERSONNEL AND PERCENT OF TOTAL MILITARY PERSONNEL, BY SERVICE

DATE	TOTAL DOD		ARMY		NAVY		MARINE CORPS		AIR FORCE	
	NUMBER	%	NUMBER	%	NUMBER	%	NUMBER	%	NUMBER	%
OCT 31, 1980	277,794	13.5	98,351	12.6	62,889	11.9	18,160	9.6	98,394	17.6
NOV 30, 1980	277,855	13.5	98,038	12.6	63,190	11.9	18,022	9.6	98,605	17.6
DEC 31, 1980	277,811	13.5	98,226	12.7	63,218	11.9	17,951	9.6	98,416	17.6
JAN 31, 1981	278,455	13.5	98,557	12.7	63,259	11.9	18,040	9.6	98,599	17.6
FEB 28, 1981	279,205	13.5	98,474	12.7	63,699	11.9	18,115	9.6	98,917	17.6
MAR 31, 1981	279,747	13.6	98,423	12.7	64,049	11.9	18,145	9.7	99,130	17.6
APR 30, 1981	280,505	13.6	98,517	12.7	64,573	12.1	18,216	9.7	99,199	17.6

DEPARTMENT OF DEFENSE  
WASHINGTON HEADQUARTERS SERVICES  
DIRECTORATE FOR INFORMATION  
OPERATIONS AND REPORTS

TABLE P23.3

DEPARTMENT OF DEFENSE  
TOTAL ACTIVE DUTY MILITARY PERSONNEL BY TYPE

DATE	OFFICERS	ENLISTED	A/ OFFICER CANDIDATES	TOTAL
OCT 31, 1980	277,794	1,761,671	13,272	2,052,737
NOV 30, 1980	277,855	1,764,435	13,200	2,055,490
DEC 31, 1980	277,811	1,759,847	13,100	2,050,758
JAN 31, 1981	278,455	1,764,160	12,915	2,055,550
FEB 28, 1981	279,205	1,769,318	12,860	2,061,383
MAR 31, 1981	279,747	1,769,554	12,749	2,062,050
APR 30, 1981	280,505	1,767,238	12,673	2,060,416

A/ CONSISTS OF THE FOLLOWING:  
FOR ARMY - CADETS, U. S. MILITARY ACADEMY  
FOR NAVY - MIDSHPMEN, U. S. NAVAL ACADEMY  
FOR AIR FORCE - CADETS, U. S. AIR FORCE ACADEMY

DEPARTMENT OF DEFENSE  
WASHINGTON HEADQUARTERS SERVICES  
DIRECTORATE FOR INFORMATION  
OPERATIONS AND REPORTS

TABLE P23.4

DEPARTMENT OF DEFENSE  
ARMY ACTIVE DUTY MILITARY PERSONNEL BY TYPE

DATE	OFFICERS	ENLISTED	CADETS U.S. MILITARY ACADEMY	TOTAL
OCT 31, 1980	96,351	674,869	4,361	777,581
NOV 30, 1980	96,038	673,967	4,352	776,367
DEC 31, 1980	96,226	669,817	4,308	772,351
JAN 31, 1981	96,557	671,055	4,240	773,852
FEB 28, 1981	96,474	672,067	4,230	774,771
MAR 31, 1981	96,423	671,743	4,155	774,321
APR 30, 1981	96,517	671,761	4,116	774,394

DEPARTMENT OF DEFENSE  
WASHINGTON HEADQUARTERS SERVICES  
DIRECTORATE FOR INFORMATION  
OPERATIONS AND REPORTS

TABLE P23.5

DEPARTMENT OF DEFENSE  
NAVY ACTIVE DUTY MILITARY PERSONNEL BY TYPE

DATE	OFFICERS	ENLISTED	MIDSHIPMEN U.S. NAVAL ACADEMY	TOTAL
OCT 31, 1980	62,889	459,088	4,535	526,512
NOV 30, 1980	63,190	462,304	4,499	529,993
DEC 31, 1980	63,218	463,867	4,497	531,582
JAN 31, 1981	63,259	464,749	4,445	532,453
FEB 28, 1981	63,699	467,749	4,430	535,878
MAR 31, 1981	64,049	468,018	4,416	536,483
APR 30, 1981	64,573	466,431	4,402	535,406

DEPARTMENT OF DEFENSE  
WASHINGTON HEADQUARTERS SERVICES  
DIRECTORATE FOR INFORMATION  
OPERATIONS AND REPORTS

TABLE P23.6

DEPARTMENT OF DEFENSE  
MARINE CORPS ACTIVE DUTY MILITARY PERSONNEL BY TYPE

DATE	OFFICERS	ENLISTED	TOTAL
OCT 31, 1980	19,160	170,079	189,239
NOV 30, 1980	18,022	170,226	188,248
DEC 31, 1980	17,951	169,241	187,192
JAN 31, 1981	18,040	169,745	187,785
FEB 28, 1981	18,115	169,956	188,073
MAR 31, 1981	18,145	169,595	187,740
APR 30, 1981	18,216	168,642	186,858

DEPARTMENT OF DEFENSE  
WASHINGTON HEADQUARTERS SERVICES  
DIRECTORATE FOR INFORMATION  
OPERATIONS AND REPORTS

TABLE P23.7

DEPARTMENT OF DEFENSE  
AIR FORCE ACTIVE DUTY MILITARY PERSONNEL BY TYPE

DATE	OFFICERS	ENLISTED	CADETS		TOTAL
			U.S.A.F.	ACADEMY	
OCT 31, 1980	98,394	457,635	4,376		560,405
NOV 30, 1980	98,605	457,938	4,349		560,892
DEC 31, 1980	98,416	456,922	4,295		559,633
JAN 31, 1981	98,599	458,631	4,230		561,460
FEB 28, 1981	98,917	459,544	4,200		562,661
MAR 31, 1981	99,130	460,198	4,178		563,506
APR 30, 1981	99,199	460,404	4,155		563,758

DEPARTMENT OF DEFENSE  
WASHINGTON HEADQUARTERS SERVICES  
DIRECTORATE FOR INFORMATION  
OPERATIONS AND REPORTS

TABLE P23.41

DEPARTMENT OF DEFENSE  
ARMY ACTIVE DUTY MILITARY PERSONNEL

REPORTED STRENGTH, AND ADJUSTMENTS TO REPORTED STRENGTH TO DERIVE "DIRECT PROGRAM STRENGTH" CHARGEABLE TO APPROPRIATION "MILITARY PERSONNEL, ARMY"

DATE	REPORTED STRENGTH	A/ (LESS) EXCLUDABLES	OFF	ENL	TOTAL	OFF	ENL	TOTAL	DIRECT PROGRAM STRENGTH CHARGEABLE TO APPROPRIATION "MILITARY PERSONNEL, ARMY"	OFFICER	ENLISTED	CADETS USMA
31 OCT 1980	777,581	508	2	148	777,071	385	148	776,528	97,448	674,719	4,361	
30 NOV 1980	776,357	510	1	25	775,846	395	25	775,426	97,133	673,941	4,352	
31 DEC 1980	772,351	515	1	142	771,835	386	142	771,297	97,315	669,674	4,308	
31 JAN 1981	773,852	360	2	135	773,490	400	135	772,955	97,797	670,918	4,240	
28 FEB 1981	774,771	364	2	133	774,405	400	133	773,872	97,710	671,932	4,230	
31 MAR 1981	774,321	368	2	136	773,951	411	136	773,404	97,644	671,605	4,155	
30 APR 1981	774,394	364	3	136	774,027	410	136	773,481	97,743	671,622	4,116	

A/ ACTIVE DUTY PERSONNEL PAID BY AN APPROPRIATION OTHER THAN MILITARY PERSONNEL, ARMY, AND EXCLUDED FROM THE END STRENGTH OF THE ARMY. COMPRISED OF CIVIL WORKS PERSONNEL, AND USAR AND ARNG PERSONNEL ON STATUTORY TOURS.

DEPARTMENT OF DEFENSE  
WASHINGTON HEADQUARTERS SERVICES  
DIRECTORATE FOR INFORMATION OPERATIONS AND REPORTS

TABLE P23. 51

DEPARTMENT OF DEFENSE  
NAVY ACTIVE DUTY MILITARY PERSONNEL

REPORTED STRENGTH, AND ADJUSTMENTS TO REPORTED STRENGTH TO DERIVE "DIRECT PROGRAM STRENGTH" CHARGEABLE TO APPROPRIATION "MILITARY PERSONNEL, NAVY"

DATE	REPORTED STRENGTH	(LESS) PAID FROM A/ RES PERS APPN	TOTAL PROGRAM STRENGTH	(LESS) REIMBURSABLES	TOTAL	OFFICER	ENLISTED	TOTAL	OFFICER	ENLISTED	OFFICER CANDIDATES
31 OCT 1980	526,512	199	526,313	419	526,629	62,271	457,823	4,535	62,271	457,823	4,535
30 NOV 1980	529,993	202	529,791	399	528,119	62,589	461,031	4,499	62,589	461,031	4,499
31 DEC 1980	531,582	224	531,358	402	529,679	62,592	462,590	4,497	62,592	462,590	4,497
31 JAN 1981	532,453	223	532,230	408	530,507	62,628	463,434	4,445	62,628	463,434	4,445
28 FEB 1981	535,878	221	535,557	407	533,932	63,071	466,431	4,430	63,071	466,431	4,430
31 MAR 1981	536,483	218	536,265	407	534,512	63,424	466,672	4,416	63,424	466,672	4,416
30 APR 1981	535,406	220	535,186	409	533,441	63,944	465,095	4,402	63,944	465,095	4,402

A/ NAVAL RESERVE PERSONNEL ON ACTIVE DUTY UNDER PROVISIONS OF SEC. 265, TITLE 10, U.S. CODE PAID FROM THE NAVAL RESERVE PERSONNEL APPROPRIATION.

DEPARTMENT OF DEFENSE  
WASHINGTON HEADQUARTERS SERVICES  
DIRECTORATE FOR INFORMATION  
OPERATIONS AND REPORTS

TABLE P23.61

DEPARTMENT OF DEFENSE  
MARINE CORPS ACTIVE DUTY MILITARY PERSONNEL

REPORTED STRENGTH, AND ADJUSTMENTS TO REPORTED STRENGTH TO DERIVE "DIRECT PROGRAM STRENGTH" CHARGEABLE TO APPROPRIATION "MILITARY PERSONNEL, MARINE CORPS"

DATE	REPORTED STRENGTH	(LESS) PAID FROM A/ RES PERS APPN	TOTAL PROGRAM STRENGTH	(LESS) REIMBURSABLES	OFFICER ENLISTED	TOTAL	OFFICER	ENLISTED	DIRECT PROGRAM STRENGTH CHARGEABLE TO APPN. "MILITARY PERSONNEL, MARINE CORPS"	OFFICER	ENLISTED	OFFICER CANDIDATES
31 OCT 1980	188,239	66	188,173	24	1	188,148	18,070	170,078	188,148	18,070	170,078	-
30 NOV 1980	188,248	66	188,182	24	1	188,157	17,932	170,225	188,157	17,932	170,225	-
31 DEC 1980	187,192	66	187,126	24	1	187,101	17,861	169,240	187,101	17,861	169,240	-
31 JAN 1981	187,785	66	187,719	24	1	187,694	17,950	169,744	187,694	17,950	169,744	-
28 FEB 1981	188,073	66	188,007	24	1	187,982	18,025	169,957	187,982	18,025	169,957	-
31 MAR 1981	187,740	66	187,674	24	1	187,649	18,055	169,594	187,649	18,055	169,594	-
30 APR 1981	186,858	66	186,792	24	1	186,767	18,126	168,641	186,767	18,126	168,641	-

A/ MARINE CORPS RESERVE PERSONNEL ON ACTIVE DUTY UNDER PROVISIONS OF SEC. 265, TITLE 10, U.S. CODE PAID FROM THE MARINE CORPS RESERVE PERSONNEL APPROPRIATION.

DEPARTMENT OF DEFENSE  
WASHINGTON HEADQUARTERS SERVICES  
DIRECTORATE FOR INFORMATION  
OPERATIONS AND REPORTS

TABLE P23.71

DEPARTMENT OF DEFENSE  
AIR FORCE ACTIVE DUTY MILITARY PERSONNEL

REPORTED STRENGTH, AND ADJUSTMENTS TO REPORTED STRENGTH TO DERIVE "DIRECT PROGRAM STRENGTH" CHARGEABLE TO APPROPRIATION "MILITARY PERSONNEL, AIR FORCE"

DATE	REPORTED STRENGTH	(LESS) ANG/AFR	TOTAL PROGRAM STRENGTH	(LESS) REIMBURSABLES	TOTAL	OFFICERS	ENLISTED	OFFICER	ENLISTED	TOTAL	OFFICER	ENLISTED	USAF & AVCADS
31 OCT 1980	560,405		560,146		560,146	259							
30 NOV 1980	560,892	233	560,659		560,659	233							
31 DEC 1980	559,633	257	559,376		559,376	257							
31 JAN 1981	561,460	257	561,203		561,203	257							
28 FEB 1981	562,661	270	562,391		562,391	270							
31 MAR 1981	563,506	272	563,234		563,234	272							
30 APR 1981	563,758	285	563,473		563,473	285							

DEPARTMENT OF DEFENSE  
WASHINGTON HEADQUARTERS SERVICES  
DIRECTORATE FOR INFORMATION  
OPERATIONS AND REPORTS

TABLE P25.6

DEPARTMENT OF DEFENSE  
 WOMEN MILITARY PERSONNEL ON ACTIVE DUTY, OFFICERS, AND ENLISTED BY SERVICE

DATE	TOTAL DOD			ARMY			NAVY			MARINE CORPS			AIR FORCE		
	TOTAL	OFF	ENL AND OFF CAND	TOTAL	OFF	ENL	TOTAL	OFF	ENL AND OFF CAND	TOTAL	OFF	ENL	TOTAL	OFF	ENL
31 OCT 80	173,307	21,818	151,489	70,039	7,638	62,401	35,279	4,929	30,350	6,787	486	6,301	61,202	8,765	52,437
30 NOV 80	174,840	21,984	152,856	70,240	7,583	62,657	35,973	5,031	30,942	6,766	480	6,286	61,561	8,870	52,691
31 DEC 80	174,589	22,048	152,543	69,980	7,645	62,335	36,292	5,044	31,248	6,750	481	6,269	61,567	8,876	52,691
31 JAN 81	176,291	22,238	154,053	70,810	7,696	63,114	36,517	5,069	31,448	6,860	499	6,361	62,104	8,974	53,130
28 FEB 81	177,746	22,428	155,318	71,176	7,740	63,436	37,087	5,181	31,906	6,996	498	6,498	62,487	9,009	53,478 *
* 31 MAR 81	178,798	22,535	156,263	71,276	7,752	63,524	37,549	5,247	32,302	6,985	491	6,494	62,988	9,045	53,943 *
30 APR 81	179,144	22,578	156,566	71,237	7,772	63,465	37,716	5,257	32,459	7,008	492	6,516	63,183	9,057	54,126

\*Revised

DEPARTMENT OF DEFENSE  
 WASHINGTON HEADQUARTERS SERVICES  
 DIRECTORATE FOR INFORMATION  
 OPERATIONS AND REPORTS

TABLE P26.0

DEPARTMENT OF DEFENSE  
MILITARY PERSONNEL ON ACTIVE DUTY BY GRADE IN WHICH SERVING A/

APRIL 30, 1981

RANK/GRADE	ARMY	NAVY	MARINE CORPS	AIR FORCE
GENERAL OF ARMY - FLEET ADMIRAL	-	-	-	-
GENERAL - ADMIRAL	32	8	2	13
LT GENERAL - VICE ADMIRAL	112	30	7	39
MAJ GENERAL - REAR ADMIRAL (U)	404	88	25	123
BRIG GENERAL - REAR ADMIRAL (L)	562	136	34	177
COLONEL - CAPTAIN	14,220	3,684	540	5,346
LIEUTENANT COL - COMMANDER	33,204	7,638	1,533	12,871
MAJOR - LT COMMANDER	50,571	12,724	2,874	18,539
CAPTAIN - LIEUTENANT	86,437	16,977	4,779	34,312
1ST LIEUTENANT - LIEUTENANT (JG)	38,757	10,097	4,200	11,573
2ND LIEUTENANT - ENSIGN	38,005	10,095	2,789	16,206
CHIEF WARRANT OFFICER W-4	2,091	477	179	-
CHIEF WARRANT OFFICER W-3	5,028	883	85	-
CHIEF WARRANT OFFICER W-2	7,452	1,736	665	-
WARRANT OFFICER W-1	3,630	-	504	-
<b>TOTAL OFFICERS</b>	<b>280,505</b>	<b>64,573</b>	<b>18,216</b>	<b>99,199</b>
E-9	12,833	3,270	1,211	4,604
E-8	34,022	8,376	3,041	9,260
E-7	117,853	30,357	8,251	33,692
E-6	207,895	65,393	12,952	52,228
E-5	327,899	80,076	24,755	100,365
E-4	407,768	99,863	27,352	105,566
E-3	331,412	84,263	43,557	98,141
E-2	186,716	55,139	29,290	31,925
E-1	140,840	39,695	18,233	24,623
<b>TOTAL ENLISTED</b>	<b>1,767,238</b>	<b>466,431</b>	<b>168,642</b>	<b>460,404</b>
CADETS & MIDSHIPMEN	12,673	4,402	-	4,155
<b>GRAND TOTAL</b>	<b>2,060,416</b>	<b>535,406</b>	<b>186,858</b>	<b>563,758</b>

A/ INCLUDES REIMBURSABLE ACTIVE DUTY  
MILITARY PAY STRENGTHS AND ACTIVE  
DUTY MILITARY PERSONNEL PAID FROM  
CIVIL FUNCTIONS, RESERVE, AND  
NATIONAL GUARD APPROPRIATIONS.

DEPARTMENT OF DEFENSE  
WASHINGTON HEADQUARTERS SERVICES  
DIRECTORATE FOR INFORMATION  
OPERATIONS AND REPORTS

TABLE P26.02

DEPARTMENT OF DEFENSE  
FEMALE MILITARY PERSONNEL ON ACTIVE DUTY BY GRADE IN WHICH SERVING A/

MARCH 31, 1981  
(Revised)

RANK/GRADE	TOTAL DOD	ARMY	NAVY	MARINE CORPS	AIR FORCE
GENERAL OF ARMY - FLEET ADMIRAL	-	-	-	-	-
GENERAL - ADMIRAL	-	-	-	-	-
LT GENERAL - VICE ADMIRAL	-	-	-	-	-
MAJ GENERAL - REAR ADMIRAL (U)	3	1	1	-	1
BRIG GENERAL - REAR ADMIRAL (L)	4	1	1	-	2
COLONEL - CAPTAIN	245	90	86	6	63
LIEUTENANT COL - COMMANDER	865	287	235	21	322
MAJOR - LT COMMANDER	2,294	773	713	50	758
CAPTAIN - LIEUTENANT	8,092	3,191	1,716	124	3,061
1ST LIEUTENANT - LIEUTENANT (JG)	5,271	1,749	1,294	141	2,087
2ND LIEUTENANT - ENSIGN	5,567	1,534	1,183	119	2,751
CHIEF WARRANT OFFICER W-4	7	1	3	3	-
CHIEF WARRANT OFFICER W-3	16	6	3	7	-
CHIEF WARRANT OFFICER W-2	82	58	12	12	-
WARRANT OFFICER W-1	69	61	-	8	-
<b>TOTAL OFFICERS</b>	<b>22,535</b>	<b>7,752</b>	<b>5,247</b>	<b>491</b>	<b>9,045</b>
E-9	46	22	4	6	14
E-8	173	88	28	24	33
E-7	1,007	596	182	97	132
E-6	4,860	2,524	1,516	226	594
E-5	26,539	12,088	4,999	1,043	8,409
E-4	45,959	18,761	8,346	1,512	17,340
E-3	40,377	12,637	8,433	1,647	17,660
E-2	19,340	8,023	5,176	1,283	4,858
E-1	16,859	8,431	3,335	656	4,437
<b>TOTAL ENLISTED</b>	<b>155,160</b>	<b>63,170</b>	<b>32,019</b>	<b>6,494</b>	<b>53,477</b>
CADETS & MIDSHIPMEN	1,103	354	283	-	466
<b>GRAND TOTAL</b>	<b>178,798</b>	<b>71,276</b>	<b>37,549</b>	<b>6,985</b>	<b>62,988</b>

A/ INCLUDES REIMBURSABLE ACTIVE DUTY  
MILITARY PAY STRENGTHS AND ACTIVE  
DUTY MILITARY PERSONNEL PAID FROM  
CIVIL FUNCTIONS, RESERVE, AND  
NATIONAL GUARD APPROPRIATIONS.

DEPARTMENT OF DEFENSE  
WASHINGTON HEADQUARTERS SERVICES  
DIRECTORATE FOR INFORMATION  
OPERATIONS AND REPORTS

TABLE P26.04

DEPARTMENT OF DEFENSE  
MILITARY PERSONNEL ON ACTIVE DUTY BY GRADE IN WHICH SERVING

REGULAR A/

APRIL 30, 1981

RANK/GRADE	TOTAL DOD	ARMY	NAVY	MARINE CORPS	AIR FORCE
GENERAL OF ARMY - FLEET ADMIRAL	-	-	-	-	-
GENERAL - ADMIRAL	32	9	8	2	13
LT GENERAL - VICE ADMIRAL	111	35	30	7	39
MAJ GENERAL - REAR ADMIRAL (U)	398	166	86	24	122
BRIG GENERAL - REAR ADMIRAL (L)	558	213	134	34	177
COLONEL - CAPTAIN	13,548	4,401	3,481	522	5,144
LIEUTENANT COL - COMMANDER	29,378	9,263	6,890	1,512	11,713
MAJOR - LT COMMANDER	37,080	9,398	10,932	2,788	13,962
CAPTAIN - LIEUTENANT	50,795	12,537	12,481	4,220	21,557
1ST LIEUTENANT - LIEUTENANT (JG)	14,718	4,463	5,931	2,311	2,013
2ND LIEUTENANT - ENSIGN	10,044	3,023	4,385	872	1,764
CHIEF WARRANT OFFICER W-4	1,651	1,011	464	176	-
CHIEF WARRANT OFFICER W-3	2,988	2,025	880	83	-
CHIEF WARRANT OFFICER W-2	3,451	1,091	1,701	659	-
WARRANT OFFICER W-1	512	8	-	504	-
<b>TOTAL OFFICERS</b>	<b>165,264</b>	<b>47,643</b>	<b>47,403</b>	<b>13,714</b>	<b>56,504</b>
E-9	12,682	3,744	3,142	1,207	4,589
E-8	33,611	13,341	8,032	3,025	9,213
E-7	116,417	45,543	29,087	8,216	33,571
E-6	204,524	77,313	62,206	12,920	52,085
E-5	322,637	122,686	74,972	24,677	100,302
E-4	399,602	174,600	92,199	27,332	105,471
E-3	317,276	104,668	71,013	43,490	98,105
E-2	174,829	69,940	43,901	29,199	31,789
E-1	131,141	57,967	30,433	18,123	24,618
<b>TOTAL ENLISTED</b>	<b>1,712,719</b>	<b>669,802</b>	<b>414,985</b>	<b>166,189</b>	<b>459,743</b>
<b>REGULAR TOTAL</b>	<b>1,877,983</b>	<b>717,445</b>	<b>462,388</b>	<b>161,903</b>	<b>516,247</b>

A/ REGULAR PLUS RETIRED REGULAR  
OFFICERS ON ACTIVE DUTY.

DEPARTMENT OF DEFENSE  
WASHINGTON HEADQUARTERS SERVICES  
DIRECTORATE FOR INFORMATION  
OPERATIONS AND REPORTS

TABLE P26.05

DEPARTMENT OF DEFENSE  
MILITARY PERSONNEL ON ACTIVE DUTY BY GRADE IN WHICH SERVING  
RESERVE A/

APRIL 30, 1981

RANK/GRADE	TOTAL DOD	ARMY	NAVY	MARINE CORPS	AIR FORCE
GENERAL OF ARMY - FLEET ADMIRAL	-	-	-	-	-
GENERAL - ADMIRAL	-	-	-	-	-
LT GENERAL - VICE ADMIRAL	1	1	-	-	-
MAJ GENERAL - REAR ADMIRAL (U)	6	2	2	1	1
BRIG GENERAL - REAR ADMIRAL (L)	4	2	2	-	-
COLONEL - CAPTAIN	672	249	203	18	202
LIEUTENANT COL - COMMANDER	3,826	1,899	748	21	1,158
MAJOR - LT COMMANDER	13,491	7,036	1,792	86	4,577
CAPTAIN - LIEUTENANT	35,642	17,832	4,496	558	12,755
1ST LIEUTENANT - LIEUTENANT (JG)	24,039	8,424	4,166	1,889	9,560
2ND LIEUTENANT - ENSIGN	27,961	5,892	5,710	1,917	14,442
CHIEF WARRANT OFFICER W-4	440	424	13	3	-
CHIEF WARRANT OFFICER W-3	2,040	2,035	3	2	-
CHIEF WARRANT OFFICER W-2	4,001	3,960	35	6	-
WARRANT OFFICER W-1	3,118	3,118	-	-	-
TOTAL OFFICERS	115,241	50,874	17,170	4,502	42,695
E-9	151	4	128	4	15
E-8	411	4	344	16	47
E-7	1,436	10	1,270	35	121
E-6	3,371	9	3,167	32	143
E-5	5,262	18	5,103	78	63
E-4	8,166	387	7,664	20	95
E-3	14,136	783	13,250	67	36
E-2	11,887	422	11,238	91	136
E-1	9,699	322	9,262	110	5
TOTAL ENLISTED	54,519	1,959	51,446	453	661
RESERVE TOTAL	169,760	52,833	68,616	4,955	43,356

A/ INCLUDES RESERVE, NATIONAL GUARD,  
AUS, AND AFUS OFFICERS ON ACTIVE  
DUTY.

DEPARTMENT OF DEFENSE  
WASHINGTON HEADQUARTERS SERVICES  
DIRECTORATE FOR INFORMATION  
OPERATIONS AND REPORTS

TABLE P27.1  
 DEPARTMENT OF DEFENSE  
 SUMMARY OF ENLISTED PERSONNEL PROCUREMENT  
 FISCAL YEAR 1981

	OCT 1980	NOV 1980	DEC 1980	JAN 1981	FEB 1981	MAR 1981
TOTAL DEPARTMENT OF DEFENSE	49,831	46,533	36,687	47,198	45,031	46,524
INDUCTIONS	-	-	-	-	-	-
FIRST ENLISTMENTS	27,819	25,050	16,880	26,427	24,947	23,873
IMMEDIATE REENLISTMENTS	16,801	15,995	16,351	15,740	15,039	17,626
OTHER REENLISTMENTS	3,495	3,299	1,985	3,278	3,011	3,005
RESERVES TO ACTIVE DUTY A/	1,716	2,189	1,471	1,753	2,034	2,020
ARMY	19,837	14,869	12,698	18,930	17,550	18,785
INDUCTIONS	-	-	-	-	-	-
FIRST ENLISTMENTS	11,100	8,220	5,275	10,087	9,411	9,172
IMMEDIATE REENLISTMENTS	6,645	5,148	6,407	6,890	6,322	7,768
OTHER REENLISTMENTS	2,027	1,449	973	1,798	1,735	1,719
RESERVES TO ACTIVE DUTY	65	52	43	155	82	126
NAVY	11,535	15,039	9,961	10,561	11,880	11,884
INDUCTIONS	-	-	-	-	-	-
FIRST ENLISTMENTS	5,849	7,805	4,952	5,665	6,334	5,909
IMMEDIATE REENLISTMENTS	3,558	4,128	2,953	2,678	2,952	3,385
OTHER REENLISTMENTS	599	1,031	669	717	773	805
RESERVES TO ACTIVE DUTY	1,529	2,075	1,387	1,501	1,821	1,785
MARINE CORPS	4,653	5,042	2,896	5,665	4,919	4,525
INDUCTIONS	-	-	-	-	-	-
FIRST ENLISTMENTS	3,308	3,337	1,583	3,763	3,197	2,553
IMMEDIATE REENLISTMENTS	967	1,456	1,141	1,449	1,328	1,540
OTHER REENLISTMENTS	258	188	132	360	283	339
RESERVES TO ACTIVE DUTY	120	61	40	93	111	93
AIR FORCE	13,806	11,583	11,132	12,042	10,682	11,330
INDUCTIONS	-	-	-	-	-	-
FIRST ENLISTMENTS	7,562	5,688	5,070	6,912	6,005	6,239
IMMEDIATE REENLISTMENTS	5,631	5,263	5,850	4,723	4,437	4,933
OTHER REENLISTMENTS	611	631	211	403	220	142
RESERVES TO ACTIVE DUTY	2	1	1	4	20	16

A/ INCLUDES NATIONAL GUARD.

DEPARTMENT OF DEFENSE  
 WASHINGTON HEADQUARTERS SERVICES  
 DIRECTORATE FOR INFORMATION  
 OPERATIONS AND REPORTS

TABLE P27.1

DEPARTMENT OF DEFENSE  
SUMMARY OF ENLISTED PERSONNEL PROCUREMENT  
FISCAL YEAR 1981

	APR 1981	MAY 1981	JUN 1981	JUL 1981	AUG 1981	SEP 1981
TOTAL DEPARTMENT OF DEFENSE	40,415					
INDUCTIONS						
FIRST ENLISTMENTS	18,973					
IMMEDIATE REENLISTMENTS	17,524					
OTHER REENLISTMENTS	2,632					
RESERVES TO ACTIVE DUTY A/	1,286					
ARMY	17,762					
INDUCTIONS						
FIRST ENLISTMENTS	8,280					
IMMEDIATE REENLISTMENTS	7,659					
OTHER REENLISTMENTS	1,712					
RESERVES TO ACTIVE DUTY	111					
NAVY	8,569					
INDUCTIONS						
FIRST ENLISTMENTS	3,472					
IMMEDIATE REENLISTMENTS	3,500					
OTHER REENLISTMENTS	505					
RESERVES TO ACTIVE DUTY	1,092					
MARINE CORPS	3,067					
INDUCTIONS						
FIRST ENLISTMENTS	1,557					
IMMEDIATE REENLISTMENTS	1,190					
OTHER REENLISTMENTS	248					
RESERVES TO ACTIVE DUTY	72					
AIR FORCE	11,017					
INDUCTIONS						
FIRST ENLISTMENTS	5,664					
IMMEDIATE REENLISTMENTS	5,175					
OTHER REENLISTMENTS	187					
RESERVES TO ACTIVE DUTY	11					

A/ INCLUDES NATIONAL GUARD.

DEPARTMENT OF DEFENSE  
WASHINGTON HEADQUARTERS SERVICES  
DIRECTORATE FOR INFORMATION  
OPERATIONS AND REPORTS

TABLE P27.21

DEPARTMENT OF DEFENSE  
ARMY ENLISTED PERSONNEL PROCUREMENT  
FISCAL YEAR 1981

	OCT 1980	NOV 1980	DEC 1980	JAN 1981	FEB 1981	MAR 1981
TOTAL	19,837	14,869	12,698	18,930	17,550	18,785
REGULAR ENL. AND REENL. - TOTAL	19,772	14,817	12,655	18,775	17,468	18,659
FIRST ENLISTMENTS	11,100	8,220	5,275	10,087	9,411	9,172
REENLISTMENTS - TOTAL	8,672	6,597	7,380	8,688	8,057	9,487
IMMEDIATE REENLISTMENTS	6,645	5,148	6,407	6,890	6,322	7,768
FORMER REGULAR	6,562	5,084	6,314	6,795	6,246	7,670
FORMER RESERVE & N.G.	83	64	93	95	76	98
FORMER INDUCTEE	-	-	-	-	-	-
REENL. OTHER THAN IMMEDIATE	2,027	1,449	973	1,798	1,735	1,719
WITHIN 2-90 DAYS AFTER SEPARATION	209	139	112	173	149	157
FORMER REGULAR	60	29	29	32	30	33
FORMER RESERVE & N.G.	139	95	72	118	103	116
FORMER INDUCTEE	10	15	9	15	13	6
FORMER OFFICER	-	-	2	8	3	2
OVER 90 DAYS AFTER SEPARATION	1,818	1,310	861	1,625	1,586	1,562
INDUCTIONS	-	-	-	-	-	-
RESERVES AND N.G. CALLS	65	52	43	155	82	126

DEPARTMENT OF DEFENSE  
WASHINGTON HEADQUARTERS SERVICES  
DIRECTORATE FOR INFORMATION  
OPERATIONS AND REPORTS

TABLE P27.21

DEPARTMENT OF DEFENSE  
ARMY ENLISTED PERSONNEL PROCUREMENT  
FISCAL YEAR 1981

	APR 1981	MAY 1981	JUN 1981	JUL 1981	AUG 1981	SEP 1981
TOTAL	17,762					
REGULAR ENL. AND REENL. - TOTAL	17,651					
FIRST ENLISTMENTS	8,280					
REENLISTMENTS - TOTAL	9,371					
IMMEDIATE REENLISTMENTS	7,659					
FORMER REGULAR	7,596					
FORMER RESERVE & N.G.	63					
FORMER INDUCTEE	-					
REENL. OTHER THAN IMMEDIATE	1,712					
WITHIN 2-90 DAYS AFTER SEPARATION	161					
FORMER REGULAR	41					
FORMER RESERVE & N.G.	113					
FORMER INDUCTEE	4					
FORMER OFFICER	3					
OVER 90 DAYS AFTER SEPARATION	1,551					
INDUCTIONS	-					
RESERVES AND N.G. CALLS	111					

DEPARTMENT OF DEFENSE  
WASHINGTON HEADQUARTERS SERVICES  
DIRECTORATE FOR INFORMATION  
OPERATIONS AND REPORTS

TABLE P27.22

DEPARTMENT OF DEFENSE  
NAVY ENLISTED PERSONNEL PROCUREMENT  
FISCAL YEAR 1981

	OCT 1980	NOV 1980	DEC 1980	JAN 1981	FEB 1981	MAR 1981
TOTAL	11,535	15,039	9,961	10,561	11,880	11,884
REGULAR ENL. AND REENL. - TOTAL	10,006	12,964	8,574	9,060	10,059	10,099
FIRST ENLISTMENTS	5,849	7,805	4,952	5,665	6,334	5,909
REENLISTMENTS - TOTAL	4,157	5,159	3,622	3,395	3,725	4,190
IMMEDIATE REENLISTMENTS	3,558	4,128	2,953	2,678	2,952	3,385
FORMER REGULAR	3,438	4,039	2,848	2,567	2,832	3,224
FORMER RESERVE	120	89	105	111	120	161
REENL. OTHER THAN IMMEDIATE	599	1,031	669	717	773	805
WITHIN 2-90 DAYS AFTER SEPARATION	135	259	161	139	149	153
FORMER REGULAR	135	259	161	139	149	153
FORMER RESERVE	-	-	-	-	-	-
OVER 90 DAYS AFTER SEPARATION	464	772	508	578	624	652
INDUCTIONS	-	-	-	-	-	-
RESERVES TO ACTIVE DUTY	1,529	2,075	1,387	1,501	1,821	1,785
FIRST ENLISTMENTS	155	288	157	183	191	186
REENLISTMENTS	142	133	110	85	99	138
REPORTED TO ACTIVE DUTY	1,232	1,654	1,120	1,233	1,531	1,461

DEPARTMENT OF DEFENSE  
WASHINGTON HEADQUARTERS SERVICES  
DIRECTORATE FOR INFORMATION  
OPERATIONS AND REPORTS.

TABLE P27.22

DEPARTMENT OF DEFENSE  
NAVY ENLISTED PERSONNEL PROCUREMENT  
FISCAL YEAR 1961

	APR 1961	MAY 1961	JUN 1961	JUL 1961	AUG 1961	SEP 1961
TOTAL	8,569					
REGULAR ENL. AND REENL. - TOTAL	7,477					
FIRST ENLISTMENTS	3,472					
REENLISTMENTS - TOTAL	4,005					
IMMEDIATE REENLISTMENTS	3,500					
FORMER REGULAR	3,315					
FORMER RESERVE	185					
REENL. OTHER THAN IMMEDIATE	505					
WITHIN 2-90 DAYS AFTER SEPARATION	96					
FORMER REGULAR	96					
FORMER RESERVE	-					
OVER 90 DAYS AFTER SEPARATION	409					
INDUCTIONS	-					
RESERVES TO ACTIVE DUTY	1,092					
FIRST ENLISTMENTS	109					
REENLISTMENTS	102					
REPORTED TO ACTIVE DUTY	881					

DEPARTMENT OF DEFENSE  
WASHINGTON HEADQUARTERS SERVICES  
DIRECTORATE FOR INFORMATION  
OPERATIONS AND REPORTS

TABLE P27.23

DEPARTMENT OF DEFENSE  
MARINE CORPS ENLISTED PERSONNEL PROCUREMENT  
FISCAL YEAR 1981

	OCT 1980	NOV 1980	DEC 1980	JAN 1981	FEB 1981	MAR 1981
TOTAL	4,653	5,042	2,896	5,665	4,919	4,525
REGULAR ENL. AND REENL. - TOTAL	4,533	4,981	2,856	5,572	4,808	4,432
FIRST ENLISTMENTS	3,308	3,337	1,583	3,763	3,197	2,553
REENLISTMENTS - TOTAL	1,225	1,644	1,273	1,809	1,611	1,879
IMMEDIATE REENLISTMENTS	967	1,456	1,141	1,449	1,328	1,540
FORMER REGULAR A/ FORMER RESERVE FORMER INDUCTEE	940 27 -	1,422 34 -	1,105 36 -	1,418 31 -	1,288 40 -	1,484 56 -
REENL. OTHER THAN IMMEDIATE	258	188	132	360	283	339
WITHIN 2-90 DAYS AFTER SEPARATION	2	3	6	20	40	40
FORMER REGULAR FORMER RESERVE FORMER INDUCTEE	2 - -	3 - -	6 - -	20 - -	40 - -	40 - -
OVER 90 DAYS AFTER SEPARATION B/	256	185	126	340	243	299
INDUCTIONS	-	-	-	-	-	-
RESERVES TO ACTIVE DUTY	120	61	40	93	111	93
FIRST ENLISTMENTS REENLISTMENTS REPORTED TO ACTIVE DUTY	- - 120	- - 61	- - 40	- - 93	- - 111	- - 93

A/ INCLUDES EXTENSIONS FOR WHICH REENLISTMENT BONUS IS PAID.  
B/ INCLUDES ENLISTMENTS OF FORMER OFFICERS.

DEPARTMENT OF DEFENSE  
WASHINGTON HEADQUARTERS SERVICES  
DIRECTORATE FOR INFORMATION  
OPERATIONS AND REPORTS

TABLE P27.23

DEPARTMENT OF DEFENSE  
MARINE CORPS ENLISTED PERSONNEL PROCUREMENT  
FISCAL YEAR 1981

	APR 1981	MAY 1981	JUN 1981	JUL 1981	AUG 1981	SEP 1981
TOTAL	3,067					
REGULAR ENL. AND REENL. - TOTAL	2,995					
FIRST ENLISTMENTS	1,557					
REENLISTMENTS - TOTAL	1,438					
IMMEDIATE REENLISTMENTS	1,190					
FORMER REGULAR A/ FORMER RESERVE FORMER INDUCTEE	1,152 38 -					
REENL. OTHER THAN IMMEDIATE	248					
WITHIN 2-90 DAYS AFTER SEPARATION	32					
FORMER REGULAR FORMER RESERVE FORMER INDUCTEE	32 - -					
OVER 90 DAYS AFTER SEPARATION B/	216					
INDUCTIONS	-					
RESERVES TO ACTIVE DUTY	72					
FIRST ENLISTMENTS REENLISTMENTS REPORTED TO ACTIVE DUTY	- - 72					

A/ INCLUDES EXTENSIONS FOR WHICH REENLISTMENT BONUS IS PAID.  
B/ INCLUDES ENLISTMENTS OF FORMER OFFICERS.

DEPARTMENT OF DEFENSE  
WASHINGTON HEADQUARTERS SERVICES  
DIRECTORATE FOR INFORMATION  
OPERATIONS AND REPORTS

TABLE P27.24  
 DEPARTMENT OF DEFENSE  
 AIR FORCE ENLISTED PERSONNEL PROCUREMENT  
 FISCAL YEAR 1981

	OCT 1980	NOV 1980	DEC 1980	JAN 1981	FEB 1981	MAR 1981
TOTAL	13,806	11,583	11,132	12,042	10,682	11,330
REGULAR ENL. AND REENL. - TOTAL	13,804	11,582	11,131	12,038	10,662	11,314
FIRST ENLISTMENTS	7,562	5,688	5,070	6,912	6,005	6,239
REENLISTMENTS - TOTAL	6,242	5,894	6,061	5,126	4,657	5,075
IMMEDIATE REENLISTMENTS	5,631	5,263	5,650	4,723	4,437	4,933
FORMER REGULAR FORMER RESERVE & N.G.	5,630 1	5,262 1	5,649 1	4,722 1	4,437 -	4,933 -
REENL. OTHER THAN IMMEDIATE	611	631	211	403	220	142
WITHIN 2-90 DAYS AFTER SEPARATION	-	-	-	-	-	-
FORMER REGULAR FORMER RESERVE & N.G.	-	-	-	-	-	-
OVER 90 DAYS AFTER SEPARATION A/	611	631	211	403	220	142
INDUCTIONS	-	-	-	-	-	-
RESERVES & N.G. TO ACTIVE DUTY	2	1	1	4	20	16

A/ INCLUDES ENLISTMENTS OF FORMER COMMISSIONED AND WARRANT OFFICERS.

DEPARTMENT OF DEFENSE  
 WASHINGTON HEADQUARTERS SERVICES  
 DIRECTORATE FOR INFORMATION  
 OPERATIONS AND REPORTS

TABLE P27.24

DEPARTMENT OF DEFENSE  
AIR FORCE ENLISTED PERSONNEL PROCUREMENT  
FISCAL YEAR 1981

	APR 1981	MAY 1981	JUN 1981	JUL 1981	AUG 1981	SEP 1981
TOTAL	11,017					
REGULAR ENL. AND REENL. - TOTAL	11,006					
FIRST ENLISTMENTS	5,664					
REENLISTMENTS - TOTAL	5,342					
IMMEDIATE REENLISTMENTS	5,175					
FORMER REGULAR FORMER RESERVE & N.G.	5,175					
REENL. OTHER THAN IMMEDIATE	167					
WITHIN 2-90 DAYS AFTER SEPARATION	-					
FORMER REGULAR FORMER RESERVE & N.G.	-					
OVER 90 DAYS AFTER SEPARATION A/	167					
INDUCTIONS	-					
RESERVES & N.G. TO ACTIVE DUTY	11					

A/ INCLUDES ENLISTMENTS OF FORMER COMMISSIONED AND WARRANT OFFICERS.

DEPARTMENT OF DEFENSE  
WASHINGTON HEADQUARTERS SERVICES  
DIRECTORATE FOR INFORMATION  
OPERATIONS AND REPORTS

TABLE P29.20-29.34

DEPARTMENT OF DEFENSE  
REENLISTMENT RATES BY SERVICE

	A/ "UNADJUSTED" REENLISTMENT RATES FOR TOTAL REGULARS				B/ "ADJUSTED" REENLISTMENT RATES FOR TOTAL REGULARS				REENLISTMENT RATE ARMY INDUCTEES			
	TOTAL DOD	ARMY	NAVY	MARINE CORPS	AIR FORCE	TOTAL DOD	ARMY	NAVY	MARINE CORPS	AIR FORCE	UN- ADJUSTED	AD- JUSTED
<b>FY 1979</b>												
ELIGIBLES	343,032	144,849	74,818	37,016	86,349	322,679	134,924	73,598	36,668	77,489	-	-
REENLISTMENTS	181,338	81,443	35,367	12,396	52,130	162,994	71,505	35,488	12,047	43,954	-	-
REENLISTMENT RATE	52.9%	56.2%	47.3%	33.5%	60.4%	50.5%	53.0%	48.2%	32.9%	56.7%	-	-
<b>FY 1980</b>												
ELIGIBLES	343,425	133,010	86,251	35,032	89,132	334,952	136,721	83,581	34,928	79,722	-	-
REENLISTMENTS	190,260	82,793	41,556	12,386	53,523	183,494	86,494	40,500	12,237	44,263	-	-
REENLISTMENT RATE	55.4%	62.2%	48.2%	35.4%	60.0%	54.8%	63.3%	48.5%	35.0%	55.5%	-	-
<b>FY 1981 (6 MOS)</b>												
ELIGIBLES	161,190	56,278	44,812	13,691	46,409	152,023	59,578	41,815	12,929	37,701	-	-
REENLISTMENTS	100,260	38,957	25,345	5,124	30,634	91,477	42,256	22,647	4,399	22,175	-	-
REENLISTMENT RATE	62.2%	69.2%	56.6%	37.4%	66.4%	60.2%	70.9%	54.2%	34.0%	58.8%	-	-

DEPARTMENT OF DEFENSE  
WASHINGTON HEADQUARTERS SERVICES  
DIRECTORATE FOR INFORMATION  
OPERATIONS AND REPORTS

TABLE P29.20-29.34

DEPARTMENT OF DEFENSE  
REENLISTMENT RATES BY SERVICE

	A/ "UNADJUSTED" REENLISTMENT RATES FOR FIRST-TERM REGULARS				B/ "ADJUSTED" REENLISTMENT RATES FOR FIRST-TERM REGULARS					
	TOTAL DOD	ARMY	NAVY	MARINE CORPS	AIR FORCE	TOTAL DOD	ARMY	NAVY	MARINE CORPS	AIR FORCE
<b>FY 1979</b>										
ELIGIBLES	171,034	62,909	45,204	21,029	41,892	159,988	59,604	44,308	20,925	35,151
REENLISTMENTS	64,001	27,027	16,949	4,107	15,918	54,369	23,714	17,080	4,010	9,565
REENLISTMENT RATE	37.4%	43.0%	37.5%	19.5%	38.0%	34.0%	39.6%	38.5%	19.2%	27.2%
<b>FY 1980</b>										
ELIGIBLES	165,525	50,288	53,670	19,364	42,203	161,232	52,231	51,976	19,575	37,450
REENLISTMENTS	64,762	25,434	19,721	4,493	15,114	61,610	27,370	19,138	4,672	10,430
REENLISTMENT RATE	39.1%	50.6%	36.7%	23.2%	35.8%	38.2%	52.4%	36.8%	23.9%	27.9%
<b>FY 1981 (6 MOS)</b>										
ELIGIBLES	75,235	17,487	25,756	10,791	21,201	69,212	17,483	24,212	10,502	17,015
REENLISTMENTS	33,848	10,234	11,354	2,968	9,292	28,076	10,230	9,994	2,712	5,140
REENLISTMENT RATE	45.0%	58.5%	44.1%	27.5%	43.8%	40.6%	58.5%	41.3%	25.8%	30.2%

TABLE P29.20-29.34

DEPARTMENT OF DEFENSE  
REENLISTMENT RATES BY SERVICE

	A/ "UNADJUSTED" REENLISTMENT RATES FOR CAREER REGULARS					B/ "ADJUSTED" REENLISTMENT RATES FOR CAREER REGULARS				
	TOTAL DOD	ARMY	NAVY	MARINE CORPS	AIR FORCE	TOTAL DOD	ARMY	NAVY	MARINE CORPS	AIR FORCE
<b>FY 1979</b>										
ELIGIBLES	171,998	81,940	29,614	15,987	44,457	162,691	75,320	29,290	15,743	42,338
REENLISTMENTS	117,337	54,416	18,418	8,291	36,212	108,625	47,791	18,408	8,037	34,389
REENLISTMENT RATE	68.2%	66.4%	62.2%	51.9%	81.5%	66.8%	63.5%	62.8%	51.1%	81.2%
<b>FY 1980</b>										
ELIGIBLES	177,900	82,722	32,581	15,668	46,929	173,720	84,490	31,605	15,353	42,272
REENLISTMENTS	125,498	57,359	21,835	7,895	38,409	121,884	59,124	21,362	7,565	33,833
REENLISTMENT RATE	70.5%	69.3%	67.0%	50.4%	81.8%	70.2%	70.0%	67.6%	49.3%	80.0%
<b>FY 1981 (6 MOS)</b>										
ELIGIBLES	85,955	38,791	19,056	2,900	25,208	82,811	42,095	17,603	2,427	20,686
REENLISTMENTS	66,412	28,723	13,991	2,156	21,542	63,401	32,026	12,653	1,687	17,035
REENLISTMENT RATE	77.3%	74.0%	73.4%	74.3%	85.5%	76.6%	76.1%	71.9%	69.5%	82.4%

DEFINITIONS:

- A/ "UNADJUSTED REENLISTMENT RATE" - THE RATIO OF TOTAL REENLISTMENTS OCCURRING IN A GIVEN PERIOD TO TOTAL SEPARATIONS ELIGIBLE TO REENLIST IN THE SAME PERIOD, EXPRESSED AS A PERCENTAGE.
- B/ "ADJUSTED REENLISTMENT RATE" - THE "UNADJUSTED" RATE ADJUSTED TO EXCLUDE THE EFFECTS OF: (1) EARLY SEPARATIONS FOR IMMEDIATE REENLISTMENTS AND (2) OTHER EARLY DISCHARGES OF ELIGIBLES UNDER EARLY RELEASE PROGRAMS.

TABLE P309A

DEPARTMENT OF DEFENSE  
ACTIVE DUTY MILITARY PERSONNEL STRENGTHS BY REGIONAL AREA AND BY COUNTRY

MARCH 31, 1961

REGIONAL AREA/COUNTRY	TOTAL	ARMY	AIR FORCE	NAVY	MARINE CORPS
TOTAL WORLDWIDE	2,062,346	774,321	563,506	536,779	187,740
ASHORE	1,846,714	774,321	563,506	328,096	180,791
AFLOAT	215,632	-	-	208,683	6,949
U.S. TERRITORY AND SPECIAL LOCATIONS	1,562,569	517,901	448,734	442,585	153,349
CONTINENTAL U.S.	1,278,715	473,727	409,691	258,955	136,342
ALASKA	19,679	7,661	10,303	1,510	205
HAWAII	41,882	16,847	6,052	11,100	7,883
AMERICAN SAMOA	1	1	-	-	-
GUAM	9,234	18	4,004	4,815	397
JOHNSTON ATOLL	143	134	9	-	-
MIDWAY ISLANDS	474	-	-	474	-
PUERTO RICO	3,497	348	47	2,934	168
TRUST TERRITORY OF THE PACIFIC ISLANDS	36	36	-	-	-
U.S. MISCELLANEOUS PACIFIC ISLANDS	4	-	-	-	4
VIRGIN ISLANDS OF THE U.S.	12	10	-	2	-
WAKE ISLAND	6	-	6	-	-
TRANSIENTS	62,167	19,119	18,622	16,237	6,189
AFLOAT	146,719	-	-	146,558	161
TOTAL FOREIGN COUNTRIES	499,777	256,420	114,772	94,194	34,391
ASHORE	430,864	256,420	114,772	32,069	27,603
AFLOAT	68,913	-	-	62,125	6,788
(1) WESTERN & SOUTHERN EUROPE	336,220	218,759	79,697	34,647	3,117
AUSTRIA	33	6	6	1	20
BELGIUM*	2,131	1,327	663	111	30
CYPRUS	16	2	1	-	13
DENMARK*	45	5	19	12	9
FINLAND	19	5	3	2	9
FRANCE*	70	18	15	6	31
GERMANY (FED. REPUBLIC & WEST BERLIN)*	247,620	210,643	36,587	291	97
GREECE*	3,396	556	2,396	428	16
GREENLAND*	318	-	318	-	-
ICELAND*	3,002	2	1,009	1,864	127
IRELAND	11	1	4	-	6
ITALY*	12,202	3,976	4,330	3,626	270
LUXEMBOURG*	6	-	-	-	6
MALTA	1	1	-	-	-
NETHERLANDS*	2,403	739	1,640	15	9
NORWAY*	236	37	120	35	44
PORTUGAL*	1,407	67	1,009	322	9
SPAIN	8,961	27	5,106	3,669	179

TABLE P309A

DEPARTMENT OF DEFENSE  
ACTIVE DUTY MILITARY PERSONNEL STRENGTHS BY REGIONAL AREA AND BY COUNTRY

MARCH 31, 1981

REGIONAL AREA/COUNTRY	TOTAL	ARMY	AIR FORCE	NAVY	MARINE CORPS
SWEDEN	16	1	6	3	6
SWITZERLAND	39	5	4	2	28
TURKEY*	5,245	1,155	4,002	68	20
UNITED KINGDOM*	25,208	186	22,459	2,226	337
AFLOAT	23,815	-	-	21,964	1,851
*EUROPEAN NATO	(303,289)	(218,711)	(74,567)	(9,006)	(1,005)
(2) EAST ASIA & PACIFIC	122,570	30,579	32,358	32,899	26,734
AUSTRALIA	677	17	273	10	10
BURMA	13	3	4	-	6
CHINA	12	3	4	1	4
HONG KONG	36	5	6	12	13
INDONESIA	51	12	11	14	14
JAPAN (INCLUDING OKINAWA)	46,137	2,337	14,428	7,555	21,817
OKINAWA	(29,782)	(1,173)	(8,922)	(3,029)	(16,658)
MALAYSIA	14	6	2	-	6
NEW ZEALAND	69	3	10	50	6
PHILIPPINES	15,664	31	8,303	4,702	2,628
REPUBLIC OF KOREA	37,883	28,109	9,291	231	252
SINGAPORE	23	4	1	12	6
THAILAND	99	49	25	10	15
AFLOAT	21,892	-	-	19,935	1,957
(3) AFRICA, NEAR EAST & SOUTH ASIA	19,464	465	474	17,927	598
AFGHANISTAN	6	2	-	-	4
ALGERIA	2	2	-	-	-
BAHRAIN	62	2	-	60	-
BANGLADESH	8	2	-	-	6
BRITISH INDIAN OCEAN TERRITORY	1,523	-	-	1,523	-
CAMEROON	6	-	-	-	6
CONGO	6	-	-	-	6
EGYPT	168	11	103	31	23
ETHIOPIA	11	-	-	-	11
GABON	6	-	-	-	6
GHANA	11	3	-	-	8
INDIA	46	4	4	5	33
ISRAEL	97	41	21	8	27
IVORY COAST	9	3	-	-	6
JORDAN	23	10	5	-	8
KENYA	27	8	7	-	12
KUWAIT	24	14	1	1	8
LEBANON	20	2	4	-	14

TABLE P309A

DEPARTMENT OF DEFENSE  
ACTIVE DUTY MILITARY PERSONNEL STRENGTHS BY REGIONAL AREA AND BY COUNTRY

MARCH 31, 1981

REGIONAL AREA/COUNTRY	TOTAL	ARMY	AIR FORCE	NAVY	MARINE CORPS
LIBERIA	19	5	2	5	7
MADAGASCAR	8	-	-	1	7
MALAWI	2	2	-	-	-
MALI	7	-	-	-	7
MAURITIUS	6	-	-	-	6
MOROCCO	51	11	6	3	31
NEPAL	9	1	-	-	8
NIGER	6	-	-	-	6
NIGERIA	15	4	1	-	10
OMAN	3	-	1	1	1
PAKISTAN	34	7	6	1	20
ST. HELENA	6	-	6	-	-
SAUDI ARABIA	651	292	287	58	14
SENEGAL	10	-	-	2	8
SEYCHELLES	4	-	4	-	-
SOMALIA	8	2	-	-	6
SOUTH AFRICA	14	1	3	2	8
SRI LANKA	9	-	-	3	6
SUDAN	13	2	2	-	9
SYRIA	11	2	-	-	9
TANZANIA, UNITED REPUBLIC OF	6	-	-	-	6
TUNISIA	24	11	1	2	10
UPPER VOLTA	6	-	-	-	6
YEMEN (SANA)	23	12	5	-	6
ZAIRE	21	9	5	-	7
ZAMBIA	5	-	-	-	5
AFLGAT	16,438	-	-	16,221	217
WESTERN HEMISPHERE	20,459	6,493	2,215	7,891	3,860
ANTIGUA	122	-	1	121	-
ARGENTINA	27	4	7	7	9
BAHAMAS, THE	45	-	2	37	6
BARBADOS	5	-	-	1	4
BERMUDA	1,358	-	-	1,276	82
BOLIVIA	13	4	1	-	8
BRAZIL	45	12	6	6	21
CANADA	656	10	244	391	11
CHILE	14	2	1	1	10
COLOMBIA	26	6	4	3	13
COSTA RICA	12	2	-	-	10
CUBA (GUANTANAMO)	2,339	-	3	1,710	626

(4)

TABLE P309A

DEPARTMENT OF DEFENSE  
ACTIVE DUTY MILITARY PERSONNEL STRENGTHS BY REGIONAL AREA AND BY COUNTRY  
MARCH 31, 1981

REGIONAL AREA/COUNTRY	TOTAL	ARMY	AIR FORCE	NAVY	MARINE CORPS
DOMINICAN REPUBLIC	18	4	1	4	9
ECUADOR	20	5	4	3	8
EL SALVADOR	66	43	3	-	20
GUATEMALA	16	6	1	-	9
GUYANA	6	-	-	-	6
HAITI	9	1	1	-	7
HONDURAS	20	4	7	1	8
JAMAICA	13	-	-	1	12
MEXICO	24	8	3	2	11
NETHERLANDS ANTILLES	1	-	-	-	1
NICARAGUA	13	2	1	-	10
PANAMA	6,745	6,363	1,905	311	166
PARAGUAY	10	2	1	1	6
PERU	25	6	8	3	8
URUGUAY	15	4	1	3	7
VENEZUELA	28	5	10	4	9
AFLOAT	6,768	-	-	4,005	2,763
(5) ANTARCTICA	74	-	-	74	-
(6) EASTERN EUROPE	174	64	22	6	82
BULGARIA	10	2	2	-	6
CZECHOSLOVAKIA	13	1	3	-	9
GERMAN DEMOCRATIC REPUBLIC	51	44	-	-	7
HUNGARY	11	3	1	-	7
POLAND	15	2	2	-	11
ROMANIA	14	3	2	-	9
UNION OF SOVIET SOCIALIST REPUBLICS	41	6	6	5	24
YUGOSLAVIA	19	3	6	1	9
(7) UNDISTRIBUTED	816	60	6	750	-

NOTE: ASHORE INCLUDES TEMPORARILY SHORE-BASED.

DEPARTMENT OF DEFENSE  
WASHINGTON HEADQUARTERS SERVICES  
DIRECTORATE FOR INFORMATION  
OPERATIONS AND REPORTS

**Section 2**

**RESERVE MILITARY MANPOWER STATISTICS**

TABLE R11.0

DEPARTMENT OF DEFENSE  
RESERVE COMPONENT STRENGTH SUMMARY

APRIL 30, 1981

TYPE OF DUTY	RESERVES BY RESERVE CATEGORY		
	TOTAL	OFFICER	ENLISTED A/
TOTAL	2,217,384	688,197	1,529,187
READY RESERVE NOT ON ACTIVE DUTY	1,286,268	190,492	1,095,776
ACTIVE STATUS	1,278,779	189,770	1,089,009
INACTIVE STATUS B/	7,489	722	6,767
STANDBY RESERVE ON ACTIVE STATUS	80,859	72,272	8,587
INACTIVE STATUS	22,031	14,821	7,210
	58,828	57,451	1,377
RETIRED - RETIRED STATUS	850,257	425,433	424,824

A/ INCLUDES OFFICER CANDIDATES.

B/ INACTIVE NATIONAL GUARD AND REP'S IN NON-PAY STATUS.

SELECTED RESERVE DRILL PAY STATUS INITIAL ACTIVE DUTY TRAINING	RESERVES IN "PAID STATUS"		
	PAY GROUP	TOTAL	OFFICER ENLISTED
A, B, C, M, P, T, Q F, U	876,732	118,335	758,397
	876,732	118,335	758,397

DEPARTMENT OF DEFENSE  
WASHINGTON HEADQUARTERS SERVICES  
DIRECTORATE FOR INFORMATION  
OPERATIONS AND REPORTS

TABLE R12.0

DEPARTMENT OF DEFENSE  
RESERVE STRENGTH - OFFICER AND ENLISTED  
NOT ON ACTIVE DUTY

DATE	TOTAL	OFFICERS	ENLISTED A/
31 OCT 1980	2,178,423	667,943	1,510,480
30 NOV 1980	2,177,167	667,572	1,509,595
31 DEC 1980	2,210,566	687,536	1,523,030
31 JAN 1981	2,210,094	686,979	1,523,115
28 FEB 1981	2,226,157	703,607	1,522,550
31 MAR 1981	2,211,722	687,560	1,524,162
30 APR 1981	2,217,384	688,197	1,529,187

A/ INCLUDES OFFICER CANDIDATES.

DEPARTMENT OF DEFENSE  
WASHINGTON HEADQUARTERS SERVICES  
DIRECTORATE FOR INFORMATION  
OPERATIONS AND REPORTS

TABLE R13.0

DEPARTMENT OF DEFENSE  
 READY RESERVE AND ACTIVE DUTY STRENGTH COMPARED TO STATUTORY LIMITATION

APRIL 30, 1981

	TOTAL	ON ACTIVE DUTY	NOT ON ACTIVE DUTY
STATUTORY READY RESERVE LIMITATION A/	2,900,000		
DIFFERENCE	1,422,786		
READY RESERVE AND ACTIVE DUTY STRENGTH	1,477,214	170,895	1,306,319
COAST GUARD RESERVE	21,186	1,135	20,051
DOD RESERVE	1,456,028	169,760	1,286,268
ARMY	860,148	52,833	807,315
NATIONAL GUARD B/	390,544	758	389,786
ARMY RESERVE	469,604	52,075	417,529
NAVAL RESERVE	260,105	68,616	191,489
MARINE CORPS RESERVE	91,216	4,955	86,261
AIR FORCE	244,559	43,356	201,203
AIR NATIONAL GUARD C/	98,096	248	97,848
AIR FORCE RESERVE	146,463	43,108	103,355

A/ SECTION 205(B), ARMED FORCES RESERVE ACT OF 1952, AS AMENDED.  
 B/ INCLUDES "INACTIVE NATIONAL GUARD" NUMBERING 7,489 AND REP'S NUMBERING 2,493.  
 C/ INCLUDES REP'S IN A NON-PAY STATUS NUMBERING 163.

DEPARTMENT OF DEFENSE  
 WASHINGTON HEADQUARTERS SERVICES  
 DIRECTORATE FOR INFORMATION  
 OPERATIONS AND REPORTS

TABLE R14.0

DEPARTMENT OF DEFENSE  
RESERVE COMPONENT PERSONNEL BY RESERVE CATEGORY  
NOT ON ACTIVE DUTY

TOTAL

DATE	TOTAL	READY	STANDBY	RETIRED
31 OCT 1980	2,178,423	1,270,690	85,181	822,552
30 NOV 1980	2,177,167	1,270,106	83,901	823,160
31 DEC 1980	2,210,566	1,274,399	82,792	853,375
31 JAN 1981	2,210,094	1,271,852	83,316	854,926
28 FEB 1981	2,226,157	1,274,643	82,400	869,114
31 MAR 1981	2,211,722	1,279,823	81,440	850,459
30 APR 1981	2,217,384	1,286,268	80,859	850,257

DEPARTMENT OF DEFENSE  
WASHINGTON HEADQUARTERS SERVICES  
DIRECTORATE FOR INFORMATION  
OPERATIONS AND REPORTS

TABLE R14.0

DEPARTMENT OF DEFENSE  
RESERVE COMPONENT PERSONNEL BY RESERVE CATEGORY  
NOT ON ACTIVE DUTY

OFFICERS

DATE	TOTAL	READY	STANDBY	RETIRED
31 OCT 1980	667,943	188,850	75,683	403,410
30 NOV 1980	667,572	189,242	74,755	403,575
31 DEC 1980	687,536	189,832	73,824	423,880
31 JAN 1981	686,979	188,085	74,589	424,305
28 FEB 1981	703,607	188,266	73,813	441,528
31 MAR 1981	687,560	189,537	72,966	425,057
30 APR 1981	688,197	190,492	72,272	425,433

TABLE R14.0

DEPARTMENT OF DEFENSE  
RESERVE COMPONENT PERSONNEL BY RESERVE CATEGORY  
NOT ON ACTIVE DUTY

ENLISTED A/

DATE	TOTAL	READY	STANDBY	RETIRED
31 OCT 1980	1,510,480	1,081,840	9,498	419,142
30 NOV 1980	1,509,595	1,080,864	9,146	419,585
31 DEC 1980	1,523,030	1,084,567	8,968	429,495
31 JAN 1981	1,523,115	1,083,767	8,727	430,621
28 FEB 1981	1,522,350	1,086,377	8,587	427,586
31 MAR 1981	1,524,162	1,090,286	8,474	425,402
30 APR 1981	1,529,187	1,095,776	8,587	424,624

A/ INCLUDES OFFICER CANDIDATES

TABLE R18.0

DEPARTMENT OF DEFENSE  
SELECTED RESERVE

DATE	TOTAL	DRILL PAY STATUS	INITIAL ACTIVE DUTY TRAINING
31 OCT 1980	850,210	817,292	32,918
30 NOV 1980	853,042	819,837	33,205
31 DEC 1980	851,529	821,896	29,633
31 JAN 1981	864,007	833,148	30,859
28 FEB 1981	869,410	869,410	
31 MAR 1981	874,431	874,431	
30 APR 1981	876,732	876,732	

DEPARTMENT OF DEFENSE  
WASHINGTON HEADQUARTERS SERVICES  
DIRECTORATE FOR INFORMATION  
OPERATIONS AND REPORTS

TABLE R21.0

DEPARTMENT OF DEFENSE  
RESERVE PERSONNEL ON ACTIVE DUTY BY COMPONENT

APRIL 30, 1981

COMPONENT/PERSONNEL	TOTAL	OFFICER	ENLISTED A/
TOTAL DEPARTMENT OF DEFENSE	169,760	115,241	54,519
ARMY - TOTAL	52,833	50,874	1,959
NATIONAL GUARD OF THE U. S.	758	388	370
ARMY RESERVE	52,075	50,486	1,589
NAVAL RESERVE	68,616	17,170	51,446
MARINE CORPS RESERVE	4,955	4,502	453
AIR FORCE - TOTAL	43,356	42,695	661
AIR NATIONAL GUARD OF THE U. S.	248	175	73
AIR FORCE RESERVE	43,108	42,520	588

A/ INCLUDES OFFICER CANDIDATES.

DEPARTMENT OF DEFENSE  
WASHINGTON HEADQUARTERS SERVICES  
DIRECTORATE FOR INFORMATION  
OPERATIONS AND REPORTS

TABLE R22.0

DEPARTMENT OF DEFENSE  
RESERVE STRENGTH ON ACTIVE DUTY A/

DATE	TOTAL DOD	ARMY				AIR FORCE		
		NATIONAL GUARD	ARMY RESERVE	NAVAL RESERVE	MARINE CORPS RESERVE	AIR NATIONAL GUARD	AIR FORCE RESERVE	
31 OCT 1980	168,493	1,265	52,726	65,322	5,165	311	43,704	
30 NOV 1980	169,693	1,181	52,620	66,460	5,112	304	44,016	
31 DEC 1980	169,080	1,076	52,679	66,927	4,989	289	43,120	
31 JAN 1981	169,426	894	52,732	67,308	5,015	291	43,186	
28 FEB 1981	170,082	866	52,485	68,392	4,999	284	43,062	
31 MAR 1981	170,400	810	52,156	69,003	5,060	284	43,087	
30 APR 1981	169,760	758	52,075	68,616	4,955	248	43,108	

A/ CONTINGUOUS OR EXTENDED ACTIVE DUTY.  
EXCLUDES ACTIVE DUTY FOR RESERVE TRAINING.

DEPARTMENT OF DEFENSE  
WASHINGTON HEADQUARTERS SERVICES  
DIRECTORATE FOR INFORMATION  
OPERATIONS AND REPORTS

TABLE R23.0

DEPARTMENT OF DEFENSE  
RESERVE PERSONNEL BY COMPONENT AND CATEGORY  
NOT ON ACTIVE DUTY

APRIL 30, 1981

COMPONENT/ PERSONNEL	TOTAL	NAT'L GUARD OF THE U.S. A/	ARMY RESERVE	NAVAL RESERVE	MARINE CORPS RESERVE	AIR B/	
						NAT'L GUARD OF THE U.S.	AIR FORCE RESERVE
TOTAL	2,217,384	389,786	884,698	342,469	96,568	97,848	406,015
OFFICER	688,197	37,921	295,793	161,299	13,867	11,983	167,334
ENLISTED C/	1,529,187	351,865	588,905	181,170	82,701	85,865	238,681
READY RESERVE	1,286,268	389,786	417,529	191,489	86,261	97,848	103,355
OFFICER	190,492	37,921	76,829	34,670	6,143	11,983	22,946
ENLISTED C/	1,095,776	351,865	340,700	156,819	80,118	85,865	80,409
STANDBY RESERVE	80,859	-	17,268	21,365	1,929	-	40,297
OFFICER	72,272	-	16,292	18,871	1,738	-	35,371
ENLISTED	8,587	-	976	2,494	191	-	4,926
ACTIVE STATUS	22,031	-	8,230	2,387	1,834	-	9,580
OFFICER	14,821	-	7,254	78	1,643	-	5,846
ENLISTED	7,210	-	976	2,309	191	-	3,734
INACTIVE STATUS	58,828	-	9,038	18,978	95	-	30,717
OFFICER	57,451	-	9,038	18,793	95	-	29,525
ENLISTED	1,377	-	-	185	-	-	1,192
RETIRED RESERVE	850,257	-	449,901	129,615	8,378	-	262,363
OFFICER	425,433	-	202,672	107,758	5,986	-	109,017
ENLISTED	424,824	-	247,229	21,857	2,392	-	153,346

A/ INCLUDES "INACTIVE NATIONAL GUARD" NUMBERING 7,489 TOTAL, 722 OFFICERS, 6,767 ENLISTED AND RESERVE ENLISTMENT PROGRAM (REPS) IN A NON-PAY STATUS NUMBERING 2,493.

B/ INCLUDES REPS IN A NON-PAY STATUS NUMBERING 163.

C/ INCLUDES OFFICER CANDIDATES.

DEPARTMENT OF DEFENSE  
WASHINGTON HEADQUARTERS SERVICES  
DIRECTORATE FOR INFORMATION  
OPERATIONS AND REPORTS

TABLE R24.0

DEPARTMENT OF DEFENSE  
RESERVE STRENGTH NOT ON ACTIVE DUTY A/

DATE	TOTAL DOD	ARMY				AIR FORCE	
		B/ NATIONAL GUARD	ARMY RESERVE	NAVAL RESERVE	MARINE CORPS RESERVE	AIR NATIONAL GUARD	AIR FORCE RESERVE
31 OCT 1980	2,178,423	375,199	850,134	337,302	102,455	96,659	416,674
30 NOV 1980	2,177,167	376,807	848,774	337,534	101,664	96,570	415,818
31 DEC 1980	2,210,566	378,911	881,680	337,350	100,528	96,695	415,402
31 JAN 1981	2,210,094	381,695	880,477	337,813	99,201	96,863	414,045
28 FEB 1981	2,226,157	384,942	899,364	338,217	98,187	97,060	408,387
31 MAR 1981	2,211,722	387,748	861,501	340,306	96,798	97,694	407,675
30 APR 1981	2,217,384	389,786	884,698	342,469	96,568	97,848	406,015

A/ INCLUDES RESERVES ON ACTIVE DUTY  
FOR RESERVE TRAINING PURPOSES.  
B/ INCLUDES "INACTIVE" NATIONAL GUARD.

DEPARTMENT OF DEFENSE  
WASHINGTON HEADQUARTERS SERVICES  
DIRECTORATE FOR INFORMATION  
OPERATIONS AND REPORTS

TABLE R26.5

DEPARTMENT OF DEFENSE  
SELECTED RESERVE DRILL PAY STRENGTH

APRIL 30, 1981

COMPONENT/ PERSONNEL	TOTAL	DRILL PAY STATUS A/	INITIAL ACTIVE DUTY TRAINING B/
TOTAL DOD OFFICERS ENLISTED	876,732 118,335 758,397	876,732 118,335 758,397	- - -
ARMY NATIONAL GUARD OFFICERS ENLISTED	379,804 37,199 342,605	379,804 37,199 342,605	- - -
ARMY RESERVE OFFICERS ENLISTED	216,761 37,136 179,625	216,761 37,136 179,625	- - -
NAVAL RESERVE OFFICERS ENLISTED	87,781 16,713 71,068	87,781 16,713 71,068	- - -
MARINE CORPS RESERVE OFFICERS ENLISTED	35,390 2,445 32,945	35,390 2,445 32,945	- - -
AIR NATIONAL GUARD OFFICERS ENLISTED	97,685 11,983 85,702	97,685 11,983 85,702	- - -
AIR FORCE RESERVE OFFICERS ENLISTED	59,311 12,859 46,452	59,311 12,859 46,452	- - -

A/ INCLUDES PAY GROUPS A, B, C, M, P, T, Q.

B/ INCLUDES PAY GROUPS F AND U.

DEPARTMENT OF DEFENSE  
WASHINGTON HEADQUARTERS SERVICES  
DIRECTORATE FOR INFORMATION  
OPERATIONS AND REPORTS

