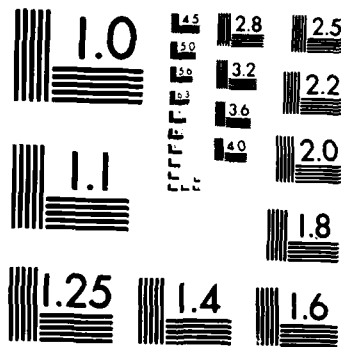


1 OF 1

AD-A153 289



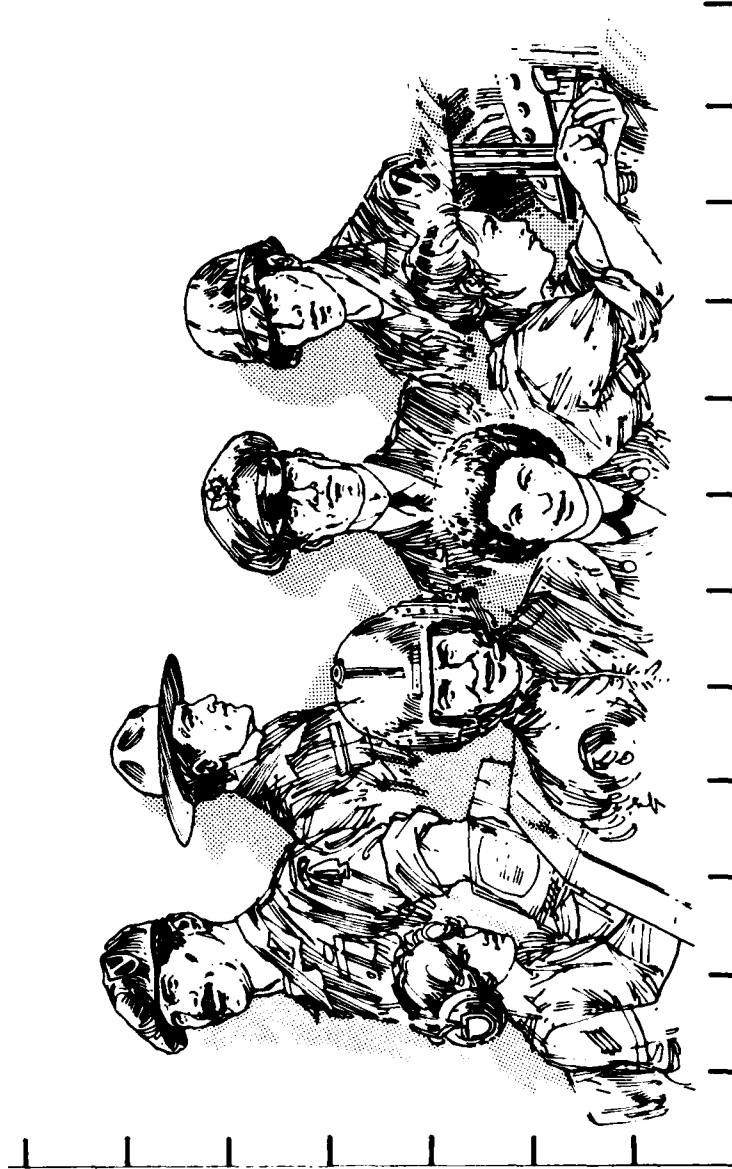
MICROCOPY RESOLUTION TEST CHART
NATIONAL BUREAU OF STANDARDS-1963-A

**THIS REPORT IS UNCLASSIFIED AND
ITS DISTRIBUTION IS UNLIMITED**



Department of Defense
MILITARY MANPOWER STATISTICS

JULY 1981

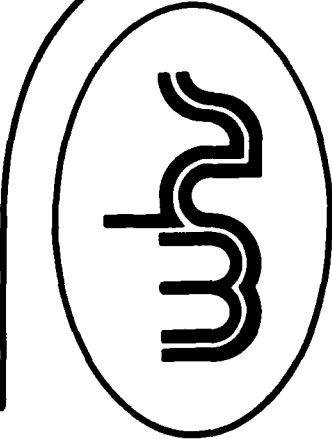
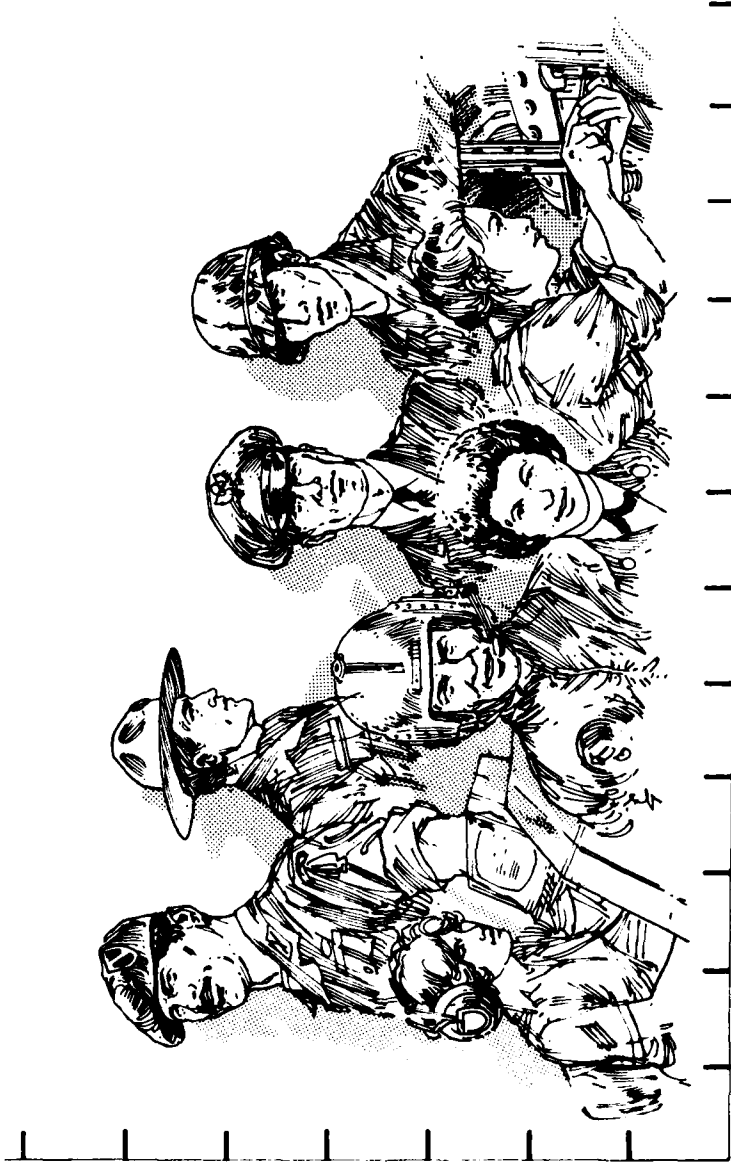




Department of Defense
MILITARY MANPOWER STATISTICS

OSD

WASHINGTON HEADQUARTERS SERVICES



**DIRECTORATE FOR INFORMATION
 OPERATIONS AND REPORTS (DIOR)
 THE PENTAGON, WASHINGTON, D.C.**

F O R E W O R D

MILITARY MANPOWER STATISTICS (MMS) is a monthly publication prepared by the Washington Headquarters Services, Directorate for Information Operations and Reports (WHS/DIOR) of the Office of the Secretary of Defense.

The MMS report presents audited statistical data pertaining to military personnel on active duty and personnel in military reserve components, for the current fiscal year on a monthly basis. The March, June, September, and December issues contain quarterly summaries of certain military manpower data as annotated in the Table of Contents. Although these tables are revised quarterly, they are published without changes in two subsequent monthly editions of this publication. The publication is generated from a computerized data base developed and maintained by the Manpower Management Information Division of WHS/DIOR.

The report is approved for public release at cost: distribution unlimited. Requests for additional copies and changes in distribution should be addressed to the Director, Washington Headquarters Services, Room 3E843, The Pentagon, Washington, D.C. 20301.

T A B L E O F C O N T E N T S

<u>Section 1</u>	<u>Active Duty Military Manpower Statistics</u>	<u>Page</u>
Table P10	Summary of Military Personnel	3
Table P11	Department of Defense Manpower Comparison	4
Table P22.1	Total Active Duty Military Personnel by Service	5
Table P23.1	Active Duty Officer Personnel and Percent of Total Military Personnel by Service	6
Table P23.3	Total Active Duty Military Personnel by Type	7
Table P23.4	Army Active Duty Military Personnel by Type	8
Table P23.5	Navy Active Duty Military Personnel by Type	9
Table P23.6	Marine Corps Active Duty Military Personnel by Type	10
Table P23.7	Air Force Active Duty Military Personnel by Type	11
Table P23.41	Army Active Duty Military Personnel	12
Table P23.51	Navy Active Duty Military Personnel	13
Table P23.61	Marine Corps Active Duty Military Personnel	14
Table P23.71	Air Force Active Duty Military Personnel	15
Table P25.6	Women Military Personnel on Active Duty Officers and Enlisted by Service	16

Section 1

Active Duty Military Manpower Statistics

	<u>Page</u>
Table P26.0	17
Military Personnel on Active Duty by Grade in Which Serving	
*Table P26.02	18
Female Military Personnel on Active Duty by Grade in Which Serving	
Table P26.04	19
Military Personnel on Active Duty by Grade in Which Serving - Regular	
Table P26.05	20
Military Personnel on Active Duty by Grade in Which Serving - Reserve	
Table P27.1	21
Summary of Enlisted Personnel Procurement	
Table P27.21	23
Army Enlisted Personnel Procurement	
Table P27.22	25
Navy Enlisted Personnel Procurement	
Table P27.23	27
Marine Corps Enlisted Personnel Procurement	
Table P27.24	29
Air Force Enlisted Personnel Procurement	
*Table P29.20-29-34	31
Reenlistment Rates by Service	
*Table P309A	34
Active Duty Military Personnel Strength by Regional Area and by Country	

* Prepared quarterly, this table will be updated in March, June, September and December.

<u>Section 2</u>	<u>Reserve Military Manpower Statistics</u>	<u>Page</u>
Table R11.0	Reserve Component Strength Summary	41
Table R12.0	Reserve Strength - Officer and Enlisted Not on Active Duty	42
Table R13.0	Ready Reserve and Active Duty Strength Compared to Statutory Limitation	43
Table R14.0	Reserve Component Personnel by Reserve Category Not on Active Duty - Total	44
Table R14.0	Reserve Component Personnel by Reserve Category Not on Active Duty - Officers	45
Table R14.0	Reserve Component Personnel by Reserve Category Not on Active Duty - Enlisted	46
Table R18.0	Selected Reserve	47
Table R21.0	Reserve Personnel on Active Duty by Component	48
Table R22.0	Reserve Strength on Active Duty	49
Table R23.0	Reserve Personnel by Component and Category Not on Active Duty	50
Table R24.0	Reserve Strength Not on Active Duty	51
Table R26.5	Selected Reserve Drill Pay Strength	52
	Glossary of Terms	53

Section 1

ACTIVE DUTY MILITARY MANPOWER STATISTICS

TABLE P10

DEPARTMENT OF DEFENSE
SUMMARY OF MILITARY PERSONNEL

	TOTAL DOD	ARMY	NAVY	MARINE CORPS	AIR FORCE
1. ACTIVE DUTY MILITARY AS OF 31 JUL 1981					
OFFICER	285,681	101,557	65,734	18,280	100,110
ENLISTED	1,782,251	670,353	475,984	171,914	464,000
ACADEMY CADETS	13,798	4,611	4,647	-	4,540
TOTAL ACTIVE DUTY MILITARY	2,081,730	776,521	546,365	190,194	568,650
2. GUARD AND RESERVES AS OF 31 JUL 1981					
NATIONAL GUARD IN PAID STATUS	390,712	292,927	-	-	97,785
	479,925	382,252	-	-	97,673
RESERVES IN PAID STATUS	1,713,887	889,510	339,083	91,612	393,682
	406,662	223,109	87,654	36,356	59,543
TOTAL GUARD AND RESERVES IN PAID STATUS	2,104,599	1,182,437	339,083	91,612	982,934
	886,587	605,361	87,654	36,356	314,432
3. OFFICER TRAINING IN COLLEGES A/ AS OF OCTOBER 1980					
	102,626	71,240	8,300	-	23,086

A/ EXCLUDES 179,194 IN JUNIOR DIVISION, MILITARY
SCHOOLS AND NATIONAL DEFENSE CADETS CORPS.

TABLE P11
 DOD MANPOWER COMPARISON
 (MILITARY & CIVIL FUNCTIONS)

DATE	TOTAL DOD	ARMY			AIR FORCE			NAVY AND MARINE CORPS			A/ OSD/ JCS	
		MILI-TARY	B/ CIVIL- IAN	TOTAL	MILI-TARY	B/ CIVIL- IAN	TOTAL	NAVY MILI-TARY	MARINE CORPS MILI-TARY	B/ CIVIL- IAN		TOTAL
31 OCT 80	3,020,228	777,581	348,187	1,125,768	560,405	233,436	793,841	526,512	188,239	311,514	1,026,265	74,354
30 NOV 80	3,027,191	776,357	347,504	1,123,861	560,892	233,425	794,317	529,993	188,248	313,173	1,031,414	77,599
31 DEC 80	3,023,757	772,351	347,331	1,119,682	559,633	233,540	793,173	531,582	187,192	314,610	1,033,384	77,518
31 JAN 81	3,028,540	773,852	346,548	1,120,400	561,460	231,667	793,127	532,453	187,785	317,163	1,037,401	77,612
28 FEB 81	3,033,085	774,771	346,306	1,121,077	562,661	231,097	793,758	535,878	188,073	316,766	1,040,717	77,533
31 MAR 81	3,036,328	774,321	347,321	1,121,642	563,506	231,806	795,312	536,483	187,740	317,254	1,041,477	77,897
30 APR 81	3,040,254	774,394	349,964	1,124,358	563,758	232,668	796,426	535,406	186,858	318,691	1,040,955	78,515
31 MAY 81	3,053,602	774,202	354,770	1,128,972	564,013	234,608	798,621	539,188	186,394	320,933	1,046,515	79,494
30 JUN 81	3,058,933	773,806	358,872	1,132,678	566,973	237,758	804,731	540,829	188,748	320,255	1,049,832	71,692
31 JUL 81	3,104,384	776,521	374,390	1,150,911	568,650	244,272	812,922	546,365	190,194	329,913	1,066,472	74,079

A/ CIVILIAN PERSONNEL. MILITARY PERSONNEL ASSIGNED TO OSD, OJCS AND OTHER DEFENSE ACTIVITIES ARE REPORTED BY THEIR RESPECTIVE SERVICES.

B/ -TOTAL PAID EMPLOYEES- AS REPORTED OFFICIALLY TO THE OFFICE OF PERSONNEL MANAGEMENT; EXCLUDES OVERSEAS SUPPORT PERSONNEL (INDIRECT HIRE).

TABLE P22.1

DEPARTMENT OF DEFENSE
TOTAL ACTIVE DUTY MILITARY PERSONNEL BY SERVICE

DATE	TOTAL DOD	ARMY	NAVY	MARINE CORPS	AIR FORCE
OCT 31, 1980	2,052,737	777,581	526,512	188,239	560,405
NOV 30, 1980	2,055,490	776,357	529,993	188,248	560,892
DEC 31, 1980	2,050,758	772,351	531,582	187,192	559,633
JAN 31, 1981	2,055,550	773,852	532,453	187,785	561,460
FEB 28, 1981	2,061,383	774,771	535,878	188,073	562,661
MAR 31, 1981	2,062,050	774,321	536,483	187,740	563,506
APR 30, 1981	2,060,416	774,394	535,406	186,858	563,758
MAY 31, 1981	2,063,797	774,202	539,188	186,394	564,013
JUN 30, 1981	2,070,356	773,806	540,829	188,748	566,973
JUL 31, 1981	2,081,730	776,521	546,365	190,194	568,650

TABLE P23.1

DEPARTMENT OF DEFENSE
ACTIVE DUTY OFFICER PERSONNEL AND PERCENT OF TOTAL MILITARY PERSONNEL, BY SERVICE

DATE	TOTAL DOD		ARMY		NAVY		MARINE CORPS		AIR FORCE	
	NUMBER	%	NUMBER	%	NUMBER	%	NUMBER	%	NUMBER	%
OCT 31, 1980	277,794	13.5	98,351	12.6	62,889	11.9	18,160	9.6	98,394	17.6
NOV 30, 1980	277,855	13.5	98,038	12.6	63,190	11.9	18,022	9.6	98,605	17.6
DEC 31, 1980	277,811	13.5	98,226	12.7	63,218	11.9	17,951	9.6	98,416	17.6
JAN 31, 1981	278,455	13.5	98,557	12.7	63,259	11.9	18,040	9.6	98,599	17.6
FEB 28, 1981	279,205	13.5	98,474	12.7	63,699	11.9	18,115	9.6	98,917	17.6
MAR 31, 1981	279,747	13.6	98,423	12.7	64,049	11.9	18,145	9.7	99,130	17.6
APR 30, 1981	280,505	13.6	98,517	12.7	64,573	12.1	18,216	9.7	99,199	17.6
MAY 31, 1981	284,940	13.8	100,521	13.0	65,918	12.2	18,332	9.8	100,169	17.8
JUN 30, 1981	285,643	13.8	101,257	13.1	65,840	12.2	18,374	9.7	100,172	17.7
JUL 31, 1981	285,681	13.7	101,557	13.1	65,734	12.0	18,280	9.6	100,110	17.6

TABLE P23.3

DEPARTMENT OF DEFENSE
TOTAL ACTIVE DUTY MILITARY PERSONNEL BY TYPE

DATE	OFFICERS	ENLISTED	A/ OFFICER CANDIDATES	TOTAL
OCT 31, 1980	277,794	1,761,671	13,272	2,052,737
NOV 30, 1980	277,855	1,764,435	13,200	2,055,490
DEC 31, 1980	277,811	1,759,847	13,100	2,050,758
JAN 31, 1981	278,455	1,764,180	12,915	2,055,550
FEB 28, 1981	279,205	1,769,318	12,860	2,061,383
MAR 31, 1981	279,747	1,769,554	12,749	2,062,050
APR 30, 1981	280,505	1,767,238	12,673	2,060,416
MAY 31, 1981	284,940	1,769,178	9,679	2,063,797
JUN 30, 1981	285,643	1,773,651	11,062	2,070,356
JUL 31, 1981	285,681	1,782,251	13,798	2,081,730

A/ CONSISTS OF THE FOLLOWING:
FOR ARMY - CADETS, U. S. MILITARY ACADEMY
FOR NAVY - MIDSHPMEN, U. S. NAVAL ACADEMY
FOR AIR FORCE - CADETS, U. S. AIR FORCE ACADEMY

TABLE P23.4

DEPARTMENT OF DEFENSE
ARMY ACTIVE DUTY MILITARY PERSONNEL BY TYPE

DATE	OFFICERS	ENLISTED	CADETS U.S. MILITARY ACADEMY	TOTAL
OCT 31, 1980	98,351	674,869	4,361	777,581
NOV 30, 1980	98,038	673,967	4,352	776,357
DEC 31, 1980	98,226	669,817	4,308	772,351
JAN 31, 1981	98,557	671,055	4,240	773,852
FEB 28, 1981	98,474	672,067	4,230	774,771
MAR 31, 1981	98,423	671,743	4,155	774,321
APR 30, 1981	98,517	671,761	4,116	774,394
MAY 31, 1981	100,521	670,551	3,130	774,202
JUN 30, 1981	101,257	669,427	3,122	773,806
JUL 31, 1981	101,557	670,353	4,611	776,521

TABLE P23.5
 DEPARTMENT OF DEFENSE
 NAVY ACTIVE DUTY MILITARY PERSONNEL BY TYPE

DATE	OFFICERS	ENLISTED	MIDSHIPMEN U.S. NAVAL ACADEMY	TOTAL
OCT 31, 1980	62,889	459,088	4,535	526,512
NOV 30, 1980	63,190	462,304	4,499	529,993
DEC 31, 1980	63,218	463,867	4,497	531,582
JAN 31, 1981	63,259	464,749	4,445	532,453
FEB 28, 1981	63,699	467,749	4,430	535,878
MAR 31, 1981	64,049	468,018	4,416	536,483
APR 30, 1981	64,573	466,431	4,402	535,406
MAY 31, 1981	65,918	469,913	3,357	539,188
JUN 30, 1981	65,840	471,638	3,351	540,829
JUL 31, 1981	65,734	475,984	4,647	546,365

TABLE P23.6

DEPARTMENT OF DEFENSE
MARINE CORPS ACTIVE DUTY MILITARY PERSONNEL BY TYPE

DATE	OFFICERS	ENLISTED	TOTAL
OCT 31, 1980	18,160	170,079	188,239
NOV 30, 1980	18,022	170,226	188,248
DEC 31, 1980	17,951	169,241	187,192
JAN 31, 1981	18,040	169,745	187,785
FEB 28, 1981	18,115	169,958	188,073
MAR 31, 1981	18,145	169,595	187,740
APR 30, 1981	18,216	168,642	186,858
MAY 31, 1981	18,332	168,062	186,394
JUN 30, 1981	18,374	170,374	188,748
JUL 31, 1981	18,280	171,914	190,194

TABLE P23.7
 DEPARTMENT OF DEFENSE
 AIR FORCE ACTIVE DUTY MILITARY PERSONNEL BY TYPE

DATE	OFFICERS	ENLISTED	CADETS U.S.A.F. ACADEMY	TOTAL
OCT 31, 1980	98,394	457,635	4,376	560,405
NOV 30, 1980	98,605	457,938	4,349	560,892
DEC 31, 1980	98,416	456,922	4,295	559,633
JAN 31, 1981	98,599	458,631	4,230	561,460
FEB 28, 1981	98,917	459,544	4,200	562,661
MAR 31, 1981	99,130	460,198	4,178	563,506
APR 30, 1981	99,199	460,404	4,155	563,758
MAY 31, 1981	100,169	460,652	3,192	564,013
JUN 30, 1981	100,172	462,212	4,589	566,973
JUL 31, 1981	100,110	464,000	4,540	568,650

TABLE P23.41

DEPARTMENT OF DEFENSE
ARMY ACTIVE DUTY MILITARY PERSONNEL

REPORTED STRENGTH, AND ADJUSTMENTS TO REPORTED STRENGTH TO DERIVE "DIRECT PROGRAM STRENGTH" CHARGEABLE TO APPROPRIATION "MILITARY PERSONNEL, ARMY"

DATE	REPORTED STRENGTH	A/ EXCLUDABLES	OFF	ENL	TOTAL	(LESS) REIMBURSABLES	DIRECT PROGRAM STRENGTH CHARGEABLE TO APPROPRIATION "MILITARY PERSONNEL, ARMY"	OFFICER	ENLISTED	CADETS USMA
31 OCT 1980	777,581	508	2	148	776,528	395	776,528	97,448	674,719	4,361
30 NOV 1980	776,357	510	1	25	775,426	395	775,426	97,133	673,941	4,352
31 DEC 1980	772,351	515	1	142	771,297	396	771,297	97,315	669,674	4,308
31 JAN 1981	773,852	360	2	135	772,955	400	772,955	97,797	670,918	4,240
28 FEB 1981	774,771	364	2	133	773,872	400	773,872	97,710	671,932	4,230
31 MAR 1981	774,321	368	2	136	773,404	411	773,404	97,644	671,605	4,155
30 APR 1981	774,394	364	3	136	773,481	410	773,481	97,743	671,622	4,116
31 MAY 1981	774,202	374	5	131	773,282	410	773,282	99,737	670,415	3,130
30 JUN 1981	773,806	383	6	136	772,854	427	772,854	100,447	669,285	3,122
31 JUL 1981	776,521	373	4	136	775,617	391	775,617	100,793	670,213	4,611

A/ ACTIVE DUTY PERSONNEL PAID BY AN APPROPRIATION OTHER THAN MILITARY PERSONNEL, ARMY, AND EXCLUDED FROM THE END STRENGTH OF THE ARMY. COMPRISED OF CIVIL WORKS PERSONNEL, AND USAR AND ARNG PERSONNEL ON STATUTORY TOURS.

TABLE P23.51

DEPARTMENT OF DEFENSE
NAVY ACTIVE DUTY MILITARY PERSONNEL

REPORTED STRENGTH, AND ADJUSTMENTS TO REPORTED STRENGTH TO DERIVE "DIRECT PROGRAM STRENGTH" CHARGEABLE TO APPROPRIATION "MILITARY PERSONNEL, NAVY"

DATE	REPORTED STRENGTH	TOTAL	PAID FROM A/ RES PERS APPN	OFF	ENL	OFFICER	ENLISTED	TOTAL	OFFICER	ENLISTED	OFFICER CANDIDATES
						(LESS) REIMBURSABLES					
31 OCT 1980	526,512	526,512	199	-	-	419	1,265	524,629	62,271	457,823	4,535
30 NOV 1980	529,993	529,993	202	-	-	399	1,273	528,119	62,589	461,031	4,499
31 DEC 1980	531,582	531,582	224	-	-	402	1,277	529,679	62,592	462,590	4,497
31 JAN 1981	532,453	532,453	223	-	-	408	1,315	530,507	62,628	463,434	4,445
28 FEB 1981	535,878	535,878	221	-	-	407	1,318	533,932	63,071	466,431	4,430
31 MAR 1981	536,483	536,483	218	-	-	407	1,346	534,512	63,424	466,672	4,416
30 APR 1981	535,406	535,406	220	-	-	409	1,336	533,441	63,944	465,095	4,402
31 MAY 1981	539,188	539,188	221	-	-	411	1,341	537,215	65,286	468,572	3,357
30 JUN 1981	540,829	540,829	226	-	-	422	1,324	538,857	65,192	470,314	3,351
31 JUL 1981	546,365	546,365	223	-	-	392	1,311	544,439	65,119	474,673	4,647

A/ NAVAL RESERVE PERSONNEL ON ACTIVE DUTY UNDER PROVISIONS OF SEC. 265, TITLE 10, U.S. CODE PAID FROM THE NAVAL RESERVE PERSONNEL APPROPRIATION.

TABLE P23.61

DEPARTMENT OF DEFENSE
MARINE CORPS ACTIVE DUTY MILITARY PERSONNEL

REPORTED STRENGTH, AND ADJUSTMENTS TO REPORTED STRENGTH TO DERIVE "DIRECT PROGRAM STRENGTH" CHARGEABLE TO APPROPRIATION "MILITARY PERSONNEL, MARINE CORPS"

DATE	REPORTED STRENGTH	PAID FROM A/ RES PERS APPN	(LESS) REIMBURSABLES	DIRECT PROGRAM STRENGTH CHARGEABLE TO APPN. "MILITARY PERSONNEL, MARINE CORPS"	OFFICER	ENLISTED	TOTAL	OFFICER	ENLISTED	OFFICER CANDIDATES
31 OCT 1980	188,239	66	24	188,149	18,070	170,078				-
30 NOV 1980	188,248	66	24	188,157	17,932	170,225				-
31 DEC 1980	187,192	66	24	187,101	17,861	169,240				-
31 JAN 1981	187,785	66	24	187,694	17,950	169,744				-
28 FEB 1981	188,073	66	24	187,982	18,025	169,957				-
31 MAR 1981	187,740	66	24	187,649	18,055	169,594				-
30 APR 1981	186,858	66	24	186,767	18,126	168,641				-
31 MAY 1981	186,394	65	24	186,304	18,243	168,061				-
30 JUN 1981	188,748	65	24	188,658	18,285	170,373				-
31 JUL 1981	190,194	64	23	190,106	18,193	171,913				-

A/ MARINE CORPS RESERVE PERSONNEL ON ACTIVE DUTY UNDER PROVISIONS OF SEC. 265, TITLE 10, U.S. CODE PAID FROM THE MARINE CORPS RESERVE PERSONNEL APPROPRIATION.

TABLE P23.71

DEPARTMENT OF DEFENSE
AIR FORCE ACTIVE DUTY MILITARY PERSONNEL

REPORTED STRENGTH, AND ADJUSTMENTS TO REPORTED STRENGTH TO DERIVE "DIRECT PROGRAM STRENGTH" CHARGEABLE TO APPROPRIATION "MILITARY PERSONNEL, AIR FORCE"

DATE	REPORTED STRENGTH	ANG/AFR	TOTAL	OFF	ENL	OFFICER	ENLISTED	TOTAL	OFFICER	ENLISTED	USAFA & AVCADS
31 OCT 1980	560,405		560,405	259	-						
30 NOV 1980	560,892		560,892	233	-						
31 DEC 1980	559,633		559,633	257	-						
31 JAN 1981	561,460		561,460	257	-						
28 FEB 1981	562,661		562,661	270	-						
31 MAR 1981	563,506		563,506	272	-						
30 APR 1981	563,758		563,758	285	-						
31 MAY 1981	564,013		564,013	268	-						
30 JUN 1981	566,973		566,973	273	-						
31 JUL 1981	568,650		568,650	297	-						

TABLE P25.6

DEPARTMENT OF DEFENSE
WOMEN MILITARY PERSONNEL ON ACTIVE DUTY, OFFICERS, AND ENLISTED BY SERVICE

DATE	TOTAL DOD		ARMY		NAVY		MARINE CORPS		AIR FORCE						
	TOTAL	OFF	TOTAL	OFF	TOTAL	OFF	TOTAL	OFF	TOTAL	OFF					
31 OCT 80	173,307	21,818	151,489	70,039	7,638	62,401	35,279	4,929	30,350	6,787	486	6,301	61,202	8,765	52,437
30 NOV 80	174,540	21,964	152,576	70,240	7,593	62,657	35,973	5,031	30,942	6,766	480	6,286	61,561	8,870	52,691
31 DEC 80	174,589	22,046	152,543	69,980	7,645	62,335	36,292	5,044	31,248	6,750	481	6,269	61,567	8,876	52,691
31 JAN 81	176,291	22,238	154,053	70,810	7,696	63,114	36,517	5,069	31,448	6,860	499	6,361	62,104	8,974	53,130
28 FEB 81	177,746	22,428	155,318	71,176	7,740	63,436	37,087	5,181	31,906	6,996	498	6,498	62,487	9,009	53,478
31 MAR 81	178,798	22,535	156,263	71,276	7,752	63,524	37,549	5,247	32,302	6,985	491	6,494	62,988	9,045	53,943
30 APR 81	179,144	22,578	156,566	71,237	7,772	63,465	37,716	5,257	32,459	7,008	492	6,516	63,183	9,057	54,126
31 MAY 81	179,615	22,959	156,656	71,143	8,011	63,132	38,304	5,332	32,972	7,010	513	6,497	63,158	9,103	54,055
30 JUN 81	180,695	22,988	157,707	71,159	8,047	63,112	38,952	5,328	33,624	7,178	520	6,658	63,406	9,093	54,313
31 JUL 81	181,125	23,239	157,886	71,497	8,163	63,334	39,444	5,391	34,053	7,260	519	6,741	62,924	9,166	53,758

TABLE P26.0

DEPARTMENT OF DEFENSE
MILITARY PERSONNEL ON ACTIVE DUTY BY GRADE IN WHICH SERVING A/

JULY 31, 1981

RANK/GRADE	TOTAL DOD	ARMY	NAVY	MARINE CORPS	AIR FORCE
GENERAL - ADMIRAL	32	9		2	12
LT GENERAL - VICE ADMIRAL	121	43	33	7	38
MAJ GENERAL - REAR ADMIRAL (U)	396	163	85	23	125
BRIG GENERAL - REAR ADMIRAL (L)	559	214	135	33	177
COLONEL - CAPTAIN	14,261	4,671	3,643	583	5,364
LIEUTENANT COL - COMMANDER	33,039	11,177	7,616	1,495	12,751
MAJOR - LT COMMANDER	50,064	16,244	12,677	2,888	18,255
CAPTAIN - LIEUTENANT	90,730	31,825	18,635	4,775	35,495
1ST LIEUTENANT - LIEUTENANT (JG)	38,488	11,836	9,562	4,664	12,426
2ND LIEUTENANT - ENSIGN	39,792	11,512	10,281	2,532	15,467
CHIEF WARRANT OFFICER W-4	2,148	1,482	495	171	-
CHIEF WARRANT OFFICER W-3	4,980	4,132	775	73	-
CHIEF WARRANT OFFICER W-2	7,186	4,869	1,788	529	-
WARRANT OFFICER W-1	3,885	3,380	-	505	-
TOTAL OFFICERS	285,681	101,557	65,734	18,280	100,110
E-9	12,924	3,716	3,345	1,195	4,668
E-8	33,915	13,260	8,387	3,008	9,260
E-7	118,944	46,504	30,192	8,196	34,052
E-6	209,225	77,069	67,446	13,054	51,656
E-5	335,716	122,548	85,049	24,985	103,134
E-4	409,156	173,835	102,569	26,875	105,877
E-3	335,312	113,525	79,160	44,253	98,374
E-2	172,101	58,858	54,358	29,346	29,539
E-1	154,958	61,038	45,478	21,002	27,440
TOTAL ENLISTED	1,782,251	670,353	475,984	171,914	464,000
CADETS & MIDSHIPMEN	13,798	4,611	4,647	-	4,540
GRAND TOTAL	2,081,730	776,521	546,365	190,194	568,650

A/ INCLUDES REIMBURSABLE ACTIVE DUTY
MILITARY PAY STRENGTHS

TABLE P26.02

DEPARTMENT OF DEFENSE
FEMALE MILITARY PERSONNEL ON ACTIVE DUTY BY GRADE IN WHICH SERVING A/

JUNE 30, 1981

RANK/GRADE	TOTAL DOD	ARMY	NAVY	MARINE CORPS	AIR FORCE
GENERAL - ADMIRAL	-	-	-	-	-
LT GENERAL - VICE ADMIRAL	-	-	-	-	-
MAJ GENERAL - REAR ADMIRAL (U)	2	1	-	-	1
BRIG GENERAL - REAR ADMIRAL (L)	4	1	1	-	2
COLONEL - CAPTAIN	244	86	84	6	68
LIEUTENANT COL - COMMANDER	882	301	237	21	323
MAJOR - LT COMMANDER	2,385	805	785	48	747
CAPTAIN - LIEUTENANT	3,668	3,498	1,868	125	3,177
1ST LIEUTENANT - LIEUTENANT (JG)	5,111	1,489	1,234	142	2,246
2ND LIEUTENANT - ENSIGN	5,517	1,738	1,103	147	2,529
CHIEF WARRANT OFFICER W-4	6	1	2	3	-
CHIEF WARRANT OFFICER W-3	17	7	3	7	-
CHIEF WARRANT OFFICER W-2	83	60	11	12	-
WARRANT OFFICER W-1	69	60	-	9	-
TOTAL OFFICERS	22,988	8,047	5,328	520	9,093
E-9	43	21	3	5	14
E-8	175	90	28	23	34
E-7	1,058	622	200	101	135
E-6	5,230	2,589	1,717	232	692
E-5	27,570	11,938	5,761	1,135	8,736
E-4	45,440	19,373	7,170	1,494	17,403
E-3	43,450	12,962	10,255	1,779	18,454
E-2	13,481	8,028	4,744	1,227	4,482
E-1	15,214	7,215	3,535	662	3,802
TOTAL ENLISTED	156,661	62,838	33,413	6,658	53,752
CADETS & MIDSHIPMEN	1,046	274	211	-	561
GRAND TOTAL	180,695	71,159	38,952	7,178	63,406

A/ INCLUDES REIMBURSABLE ACTIVE DUTY
MILITARY PAY STRENGTHS

TABLE P26.04

DEPARTMENT OF DEFENSE
MILITARY PERSONNEL ON ACTIVE DUTY BY GRADE IN WHICH SERVING

REGULAR A/

JULY 31, 1981

RANK/GRADE	TOTAL DOD	ARMY	NAVY	MARINE CORPS	AIR FORCE
GENERAL - ADMIRAL	32	9	9	2	12
LT GENERAL - VICE ADMIRAL	120	42	33	7	38
MAJ GENERAL - REAR ADMIRAL (U)	393	161	85	22	125
BRIG GENERAL - REAR ADMIRAL (L)	556	212	134	33	177
COLONEL - CAPTAIN	13,604	4,398	3,476	566	5,164
LIEUTENANT COL - COMMANDER	29,159	9,217	6,915	1,475	11,552
MAJOR - LT COMMANDER	37,160	9,469	10,961	2,797	13,933
CAPTAIN - LIEUTENANT	52,621	12,331	13,779	4,211	22,300
1ST LIEUTENANT - LIEUTENANT (JG)	14,755	4,466	5,300	2,380	2,609
2ND LIEUTENANT - ENSIGN	11,763	4,769	4,325	919	1,750
CHIEF WARRANT OFFICER W-4	1,706	1,055	483	168	-
CHIEF WARRANT OFFICER W-3	2,903	2,060	772	71	-
CHIEF WARRANT OFFICER W-2	3,308	1,037	1,748	523	-
WARRANT OFFICER W-1	521	16	-	505	-
TOTAL OFFICERS	168,601	49,242	48,020	13,679	57,660
E-9	12,764	3,713	3,216	1,187	4,648
E-8	33,500	13,254	8,041	2,993	9,212
E-7	117,492	46,490	28,913	8,163	33,926
E-6	205,799	77,059	64,231	13,010	51,499
E-5	330,243	122,531	79,957	24,685	103,070
E-4	399,737	173,572	93,515	26,851	105,799
E-3	322,746	113,127	67,096	44,183	98,340
E-2	160,913	58,663	43,469	29,258	29,523
E-1	144,460	60,767	35,560	20,893	27,240
TOTAL ENLISTED	1,727,654	669,176	423,998	171,223	463,257
REGULAR TOTAL	1,896,255	718,418	472,018	184,902	520,917

A/ REGULAR PLUS RETIRED REGULAR
OFFICERS ON ACTIVE DUTY

TABLE P26.05
DEPARTMENT OF DEFENSE
MILITARY PERSONNEL ON ACTIVE DUTY BY GRADE IN WHICH SERVING

RESERVE A/
JULY 31, 1981

RANK/GRADE	TOTAL DOD	ARMY	NAVY	MARINE CORPS	AIR FORCE
GENERAL - ADMIRAL	-	-	-	-	-
LT GENERAL - VICE ADMIRAL	1	1	-	-	-
MAJ GENERAL - REAR ADMIRAL (U)	3	2	-	1	-
BRIQ GENERAL - REAR ADMIRAL (L)	3	2	1	-	-
COLONEL - CAPTAIN	657	273	167	17	200
LIEUTENANT COL - COMMANDER	3,880	1,960	701	20	1,199
MAJOR - LT COMMANDER	12,904	6,775	1,716	91	4,322
CAPTAIN - LIEUTENANT	38,109	19,494	4,856	564	13,195
1ST LIEUTENANT - LIEUTENANT (JG)	23,733	7,370	4,262	2,284	9,817
2ND LIEUTENANT - ENSIGN	28,029	6,743	5,956	1,613	13,717
CHIEF WARRANT OFFICER W-4	442	427	12	3	-
CHIEF WARRANT OFFICER W-3	2,077	2,072	3	2	-
CHIEF WARRANT OFFICER W-2	3,878	3,892	40	6	-
WARRANT OFFICER W-1	3,364	3,364	-	-	-
TOTAL OFFICERS	117,080	52,315	17,714	4,601	42,450
E-9	160	3	129	8	20
E-8	415	6	346	15	48
E-7	1,452	14	1,279	33	126
E-6	3,426	10	3,215	44	157
E-5	5,473	17	5,092	300	64
E-4	9,419	263	9,054	24	78
E-3	12,566	398	12,064	70	34
E-2	11,188	195	10,889	88	16
E-1	10,498	271	9,918	109	200
TOTAL ENLISTED	54,597	1,177	51,986	691	743
RESERVE TOTAL	171,677	53,492	69,700	5,292	43,193

A/ INCLUDES RESERVE, NATIONAL GUARD,
AUS, AND AFUS OFFICERS ON ACTIVE
DUTY.

TABLE P27.1

DEPARTMENT OF DEFENSE
SUMMARY OF ENLISTED PERSONNEL PROCUREMENT
FISCAL YEAR 1981

	OCT 1980	NOV 1980	DEC 1980	JAN 1981	FEB 1981	MAR 1981
TOTAL DEPARTMENT OF DEFENSE	49,831	46,533	36,687	47,198	45,031	46,524
INDUCTIONS	-	-	-	-	-	-
FIRST ENLISTMENTS	27,819	25,050	16,880	26,427	24,947	23,873
IMMEDIATE REENLISTMENTS	16,801	15,995	16,351	15,740	15,039	17,626
OTHER REENLISTMENTS	3,495	3,299	1,985	3,278	3,011	3,005
RESERVES TO ACTIVE DUTY A/	1,716	2,189	1,471	1,753	2,034	2,020
ARMY	19,837	14,869	12,698	18,930	17,550	18,785
INDUCTIONS	-	-	-	-	-	-
FIRST ENLISTMENTS	11,100	8,220	5,275	10,087	9,411	9,172
IMMEDIATE REENLISTMENTS	6,645	5,148	6,407	6,890	6,322	7,768
OTHER REENLISTMENTS	2,027	1,449	973	1,798	1,735	1,719
RESERVES TO ACTIVE DUTY	65	52	43	155	82	126
NAVY	11,535	15,039	9,961	10,561	11,880	11,884
INDUCTIONS	-	-	-	-	-	-
FIRST ENLISTMENTS	5,849	7,805	4,952	5,665	6,334	5,903
IMMEDIATE REENLISTMENTS	3,558	4,128	2,953	2,678	2,952	3,383
OTHER REENLISTMENTS	399	1,031	669	717	773	805
RESERVES TO ACTIVE DUTY	1,529	2,075	1,387	1,501	1,821	1,785
MARINE CORPS	4,653	5,042	2,896	5,665	4,919	4,525
INDUCTIONS	-	-	-	-	-	-
FIRST ENLISTMENTS	3,308	3,337	1,583	3,763	3,197	2,553
IMMEDIATE REENLISTMENTS	967	1,456	1,141	1,449	1,328	1,540
OTHER REENLISTMENTS	258	188	132	360	283	339
RESERVES TO ACTIVE DUTY	120	61	40	93	111	93
AIR FORCE	13,606	11,583	11,132	12,042	10,682	11,330
INDUCTIONS	-	-	-	-	-	-
FIRST ENLISTMENTS	7,562	5,688	5,070	6,912	6,005	6,239
IMMEDIATE REENLISTMENTS	5,631	5,263	5,850	4,723	4,437	4,933
OTHER REENLISTMENTS	611	631	211	403	220	142
RESERVES TO ACTIVE DUTY	2	1	1	4	20	16

A/ INCLUDES NATIONAL GUARD.

TABLE P27.1

DEPARTMENT OF DEFENSE
SUMMARY OF ENLISTED PERSONNEL PROCUREMENT
FISCAL YEAR 1981

	APR 1981	MAY 1981	JUN 1981	JUL 1981	AUG 1981	SEP 1981
TOTAL DEPARTMENT OF DEFENSE	40,415	45,539	51,512	58,825		
INDUCTIONS	-	-	-	-		
FIRST ENLISTMENTS	18,973	23,033	31,886	36,307		
IMMEDIATE REENLISTMENTS	17,524	17,695	15,702	16,916		
OTHER REENLISTMENTS	2,632	2,838	2,275	3,110		
RESERVES TO ACTIVE DUTY A/	1,286	1,973	1,649	2,492		
ARMY	17,762	16,077	19,585	20,732		
INDUCTIONS	-	-	-	-		
FIRST ENLISTMENTS	8,280	7,675	11,699	12,532		
IMMEDIATE REENLISTMENTS	7,659	6,812	6,472	6,510		
OTHER REENLISTMENTS	1,712	1,492	1,340	1,517		
RESERVES TO ACTIVE DUTY	111	98	74	173		
NAVY	8,569	14,533	11,678	16,647		
INDUCTIONS	-	-	-	-		
FIRST ENLISTMENTS	3,472	7,607	6,687	10,650		
IMMEDIATE REENLISTMENTS	3,500	4,206	2,971	2,980		
OTHER REENLISTMENTS	505	924	595	1,029		
RESERVES TO ACTIVE DUTY	1,092	1,796	1,425	1,988		
MARINE CORPS	3,067	3,995	7,570	7,289		
INDUCTIONS	-	-	-	-		
FIRST ENLISTMENTS	1,557	2,175	6,117	5,394		
IMMEDIATE REENLISTMENTS	1,190	1,494	1,192	1,391		
OTHER REENLISTMENTS	248	253	125	380		
RESERVES TO ACTIVE DUTY	72	73	136	124		
AIR FORCE	11,017	10,934	12,679	14,157		
INDUCTIONS	-	-	-	-		
FIRST ENLISTMENTS	5,664	5,576	7,383	7,731		
IMMEDIATE REENLISTMENTS	5,175	5,183	5,067	6,035		
OTHER REENLISTMENTS	167	169	215	184		
RESERVES TO ACTIVE DUTY	11	6	14	207		

A/ INCLUDES NATIONAL GUARD.

TABLE P27.21
 DEPARTMENT OF DEFENSE
 ARMY ENLISTED PERSONNEL PROCUREMENT
 FISCAL YEAR 1981

	OCT 1980	NOV 1980	DEC 1980	JAN 1981	FEB 1981	MAR 1981
TOTAL	19,637	14,869	12,698	16,930	17,550	16,785
REGULAR ENL. AND REENL. - TOTAL	19,772	14,817	12,655	18,775	17,468	16,659
FIRST ENLISTMENTS	11,100	8,220	5,275	10,087	9,411	9,172
REENLISTMENTS - TOTAL	8,672	6,597	7,380	8,688	8,057	9,487
IMMEDIATE REENLISTMENTS	6,645	5,148	6,407	6,890	6,322	7,768
FORMER REGULAR	6,562	5,084	6,314	6,795	6,246	7,670
FORMER RESERVE & N.G.	83	64	93	95	76	98
FORMER INDUCTEE	-	-	-	-	-	-
REENL. OTHER THAN IMMEDIATE	2,027	1,449	973	1,798	1,735	1,719
WITHIN 2-90 DAYS AFTER SEPARATION	209	139	112	173	149	157
FORMER REGULAR	60	29	29	32	30	33
FORMER RESERVE & N.G.	139	95	72	118	103	116
FORMER INDUCTEE	10	15	9	15	13	6
FORMER OFFICER	-	-	2	8	3	2
OVER 90 DAYS AFTER SEPARATION	1,818	1,310	861	1,625	1,586	1,562
INDUCTIONS	-	-	-	-	-	-
RESERVES AND N.G. CALLS	65	52	43	155	82	126

TABLE P27.21

DEPARTMENT OF DEFENSE
ARMY ENLISTED PERSONNEL PROCUREMENT
FISCAL YEAR 1981

	APR 1981	MAY 1981	JUN 1981	JUL 1981	AUG 1981	SEP 1981
TOTAL	17,762	16,077	19,585	20,732		
REGULAR ENL. AND REENL. - TOTAL	17,651	15,979	19,511	20,559		
FIRST ENLISTMENTS	8,280	7,675	11,699	12,532		
REENLISTMENTS - TOTAL	9,371	8,304	7,812	8,027		
IMMEDIATE REENLISTMENTS	7,659	6,812	6,472	6,510		
FORMER REGULAR	7,596	6,741	6,390	6,467		
FORMER RESERVE & N.G.	63	71	82	43		
FORMER INDUCTEE	-	-	-	-		
REENL. OTHER THAN IMMEDIATE	1,712	1,492	1,340	1,517		
WITHIN 2-90 DAYS AFTER SEPARATION	161	164	131	170		
FORMER REGULAR	41	30	33	46		
FORMER RESERVE & N.G.	113	125	85	112		
FORMER INDUCTEE	4	8	13	12		
FORMER OFFICER	3	1	-	-		
OVER 90 DAYS AFTER SEPARATION	1,551	1,328	1,209	1,347		
INDUCTIONS	-	-	-	-		
RESERVES AND N.G. CALLS	111	98	74	173		

TABLE P27.22
 DEPARTMENT OF DEFENSE
 NAVY ENLISTED PERSONNEL PROCUREMENT
 FISCAL YEAR 1981

	OCT 1980	NOV 1980	DEC 1980	JAN 1981	FEB 1981	MAR 1981
TOTAL	11,535	15,039	9,961	10,561	11,880	11,884
REGULAR ENL. AND REENL. - TOTAL	10,006	12,964	8,574	9,060	10,059	10,099
FIRST ENLISTMENTS	5,849	7,805	4,952	5,665	6,334	5,909
REENLISTMENTS - TOTAL	4,157	5,159	3,622	3,395	3,725	4,190
IMMEDIATE REENLISTMENTS	3,558	4,128	2,953	2,678	2,952	3,385
FORMER REGULAR	3,438	4,039	2,848	2,567	2,832	3,224
FORMER RESERVE	120	89	105	111	120	161
REENL. OTHER THAN IMMEDIATE	599	1,031	669	717	773	805
WITHIN 2-90 DAYS AFTER SEPARATION	135	259	161	139	149	153
FORMER REGULAR	135	259	161	139	149	153
FORMER RESERVE	-	-	-	-	-	-
OVER 90 DAYS AFTER SEPARATION	464	772	508	578	624	652
INDUCTIONS	-	-	-	-	-	-
RESERVES TO ACTIVE DUTY	1,529	2,075	1,387	1,501	1,821	1,785
FIRST ENLISTMENTS	156	288	157	183	191	186
REENLISTMENTS	142	133	110	85	99	138
REPORTED TO ACTIVE DUTY	1,232	1,654	1,120	1,233	1,531	1,461

TABLE P27.22

DEPARTMENT OF DEFENSE
NAVY ENLISTED PERSONNEL PROCUREMENT
FISCAL YEAR 1981

	APR 1981	MAY 1981	JUN 1981	JUL 1981	AUG 1981	SEP 1981
TOTAL	8,569	14,533	11,678	16,647		
REGULAR ENL. AND REENL. - TOTAL	7,477	12,737	10,253	14,659		
FIRST ENLISTMENTS	3,472	7,607	6,687	10,650		
REENLISTMENTS - TOTAL	4,005	5,130	3,566	4,009		
IMMEDIATE REENLISTMENTS	3,500	4,206	2,971	2,980		
FORMER REGULAR	3,315	3,984	2,813	2,839		
FORMER RESERVE	185	222	158	141		
REENL. OTHER THAN IMMEDIATE	505	924	595	1,029		
WITHIN 2-90 DAYS AFTER SEPARATION	96	179	132	218		
FORMER REGULAR	96	179	132	218		
FORMER RESERVE	-	-	-	-		
OVER 90 DAYS AFTER SEPARATION	409	745	463	811		
INDUCTIONS	-	-	-	-		
RESERVES TO ACTIVE DUTY	1,092	1,796	1,425	1,988		
FIRST ENLISTMENTS	109	183	155	213		
REENLISTMENTS	102	140	114	94		
REPORTED TO ACTIVE DUTY	881	1,473	1,156	1,681		

TABLE P27.23
 DEPARTMENT OF DEFENSE
 MARINE CORPS ENLISTED PERSONNEL PROCUREMENT
 FISCAL YEAR 1981

	OCT 1980	NOV 1980	DEC 1980	JAN 1981	FEB 1981	MAR 1981
TOTAL	4,653	5,042	2,896	5,665	4,919	4,525
REGULAR ENL. AND REENL. - TOTAL	4,533	4,981	2,856	5,572	4,808	4,432
FIRST ENLISTMENTS	3,308	3,337	1,583	3,763	3,197	2,553
REENLISTMENTS - TOTAL	1,225	1,644	1,273	1,809	1,611	1,879
IMMEDIATE REENLISTMENTS	967	1,456	1,141	1,449	1,328	1,540
FORMER REGULAR A/ FORMER RESERVE	940	1,422	1,105	1,418	1,288	1,484
FORMER INDUCTEE	27	34	36	31	40	56
REENL. OTHER THAN IMMEDIATE	258	188	132	360	283	339
WITHIN 2-90 DAYS AFTER SEPARATION	2	3	6	20	40	40
FORMER REGULAR FORMER RESERVE FORMER INDUCTEE	2	3	6	20	40	40
OVER 90 DAYS AFTER SEPARATION B/	256	185	126	340	243	299
INDUCTIONS	-	-	-	-	-	-
RESERVES TO ACTIVE DUTY	120	61	40	93	111	93
FIRST ENLISTMENTS REENLISTMENTS REPORTED TO ACTIVE DUTY	120	61	40	93	111	93

A/ INCLUDES EXTENSIONS FOR WHICH REENLISTMENT BONUS IS PAID.
 B/ INCLUDES ENLISTMENTS OF FORMER OFFICERS.

TABLE P27.23

DEPARTMENT OF DEFENSE
MARINE CORPS ENLISTED PERSONNEL PROCUREMENT
FISCAL YEAR 1981

	APR 1981	MAY 1981	JUN 1981	JUL 1981	AUG 1981	SEP 1981
TOTAL	3,067	3,995	7,570	7,289		
REGULAR ENL. AND REENL. - TOTAL	2,995	3,922	7,434	7,165		
FIRST ENLISTMENTS	1,557	2,175	6,117	5,394		
REENLISTMENTS - TOTAL	1,438	1,747	1,317	1,771		
IMMEDIATE REENLISTMENTS	1,190	1,494	1,192	1,391		
FORMER REGULAR A/ FORMER RESERVE FORMER INDUCTEE	1,152 38 -	1,448 46 -	1,162 30 -	1,342 49 -		
REENL. OTHER THAN IMMEDIATE	248	253	125	380		
WITHIN 2-90 DAYS AFTER SEPARATION	32	40	11	50		
FORMER REGULAR FORMER RESERVE FORMER INDUCTEE	32 - -	40 - -	11 - -	46 4 -		
OVER 90 DAYS AFTER SEPARATION B/	216	213	114	330		
INDUCTIONS	-	-	-	-		
RESERVES TO ACTIVE DUTY	72	73	136	124		
FIRST ENLISTMENTS REENLISTMENTS REPORTED TO ACTIVE DUTY	- - 72	- - 73	- - 136	- - 124		

A/ INCLUDES EXTENSIONS FOR WHICH REENLISTMENT BONUS IS PAID

B/ INCLUDES ENLISTMENTS OF FORMER OFFICERS.

TABLE P27.24
 DEPARTMENT OF DEFENSE
 AIR FORCE ENLISTED PERSONNEL PROCUREMENT
 FISCAL YEAR 1981

	OCT 1980	NOV 1980	DEC 1980	JAN 1981	FEB 1981	MAR 1981
TOTAL	13,806	11,583	11,132	12,042	10,682	11,330
REGULAR ENL. AND REENL. - TOTAL	13,804	11,582	11,131	12,038	10,662	11,314
FIRST ENLISTMENTS	7,562	5,688	5,070	6,912	6,005	6,239
REENLISTMENTS - TOTAL	6,242	5,894	6,061	5,126	4,657	5,075
IMMEDIATE REENLISTMENTS	5,631	5,263	5,850	4,723	4,437	4,933
FORMER REGULAR FORMER RESERVE & N.G.	5,630	5,262	5,849	4,722	4,437	4,933
	1	1	1	1	-	-
REENL. OTHER THAN IMMEDIATE	611	631	211	403	220	142
WITHIN 2-90 DAYS AFTER SEPARATION	-	-	-	-	-	-
FORMER REGULAR FORMER RESERVE & N.G.	-	-	-	-	-	-
OVER 90 DAYS AFTER SEPARATION A/	611	631	211	403	220	142
INDUCTIONS	-	-	-	-	-	-
RESERVES & N.G. TO ACTIVE DUTY	2	1	1	4	20	16

A/ INCLUDES ENLISTMENTS OF FORMER COMMISSIONED AND WARRANT OFFICERS.

TABLE P27.24

DEPARTMENT OF DEFENSE
AIR FORCE ENLISTED PERSONNEL PROCUREMENT
FISCAL YEAR 1981

	APR 1981	MAY 1981	JUN 1981	JUL 1981	AUG 1981	SEP 1981
TOTAL	11,017	10,934	12,679	14,157		
REGULAR ENL. AND REENL. - TOTAL	11,006	10,928	12,665	13,950		
FIRST ENLISTMENTS	5,664	5,576	7,383	7,731		
REENLISTMENTS - TOTAL	5,342	5,352	5,282	6,219		
IMMEDIATE REENLISTMENTS	5,175	5,183	5,067	6,035		
FORMER REGULAR FORMER RESERVE & N.G.	5,175	5,183	5,067	6,035		
REENL. OTHER THAN IMMEDIATE	167	169	215	184		
WITHIN 2-90 DAYS AFTER SEPARATION	-	-	-	-		
FORMER REGULAR FORMER RESERVE & N.G.	-	-	-	-		
OVER 90 DAYS AFTER SEPARATION A/	167	169	215	184		
INDUCTIONS	-	-	-	-		
RESERVES & N.G. TO ACTIVE DUTY	11	6	14	207		

A/ INCLUDES ENLISTMENTS OF FORMER COMMISSIONED AND WARRANT OFFICERS.

TABLE P29. 20-29. 34

DEPARTMENT OF DEFENSE
REENLISTMENT RATES BY SERVICE

	A/ "UNADJUSTED" REENLISTMENT RATES FOR TOTAL REGULARS				B/ "ADJUSTED" REENLISTMENT RATES FOR TOTAL REGULARS				REENLISTMENT RATES FOR ARMY INDUCTEES			
	TOTAL DOD	ARMY	NAVY	MARINE CORPS	AIR FORCE	TOTAL DOD	ARMY	NAVY	MARINE CORPS	AIR FORCE	UN- ADJUSTED	AD- JUSTED
FY 1979												
ELIGIBLES	343,032	144,849	74,818	37,016	86,349	322,679	134,924	73,598	36,668	77,489	-	-
REENLISTMENTS	181,338	81,443	35,367	12,398	52,130	162,994	71,505	35,488	12,047	43,954	-	-
REENLISTMENT RATE	52.9%	56.2%	47.3%	33.5%	60.4%	50.5%	53.0%	48.2%	32.9%	56.7%	-	-
FY 1980												
ELIGIBLES	343,425	133,010	86,251	35,032	89,132	334,952	136,721	83,581	34,928	79,722	-	-
REENLISTMENTS	190,260	82,793	41,556	12,386	53,523	183,494	86,494	40,500	12,237	44,263	-	-
REENLISTMENT RATE	55.4%	62.2%	48.2%	35.4%	60.0%	54.8%	63.3%	48.5%	35.0%	55.5%	-	-
FY 1981 (9 MOS)												
ELIGIBLES	241,887	86,499	65,862	20,292	69,234	231,264	92,420	61,636	19,620	57,588	-	-
REENLISTMENTS	152,492	59,830	38,653	7,750	46,259	142,565	65,750	34,959	7,166	34,690	-	-
REENLISTMENT RATE	63.0%	69.2%	58.7%	38.2%	66.8%	61.6%	71.1%	56.7%	36.5%	60.2%	-	-

TABLE P29.20-29.34

DEPARTMENT OF DEFENSE
REENLISTMENT RATES BY SERVICE

	A/ "UNADJUSTED" REENLISTMENT RATES FOR FIRST-TERM REGULARS				B/ "ADJUSTED" REENLISTMENT RATES FOR FIRST-TERM REGULARS					
	TOTAL DOD	ARMY	NAVY	MARINE CORPS	AIR FORCE	TOTAL DOD	ARMY	NAVY	MARINE CORPS	AIR FORCE
FY 1979										
ELIGIBLES	171,034	62,909	45,204	21,029	41,892	159,988	59,604	44,308	20,925	35,151
REENLISTMENTS	64,001	27,027	16,949	4,107	15,918	54,369	23,714	17,080	4,010	9,565
REENLISTMENT RATE	37.4%	43.0%	37.5%	19.5%	38.0%	34.0%	39.8%	38.5%	19.2%	27.2%
FY 1980										
ELIGIBLES	165,525	50,288	53,670	19,364	42,203	161,232	52,231	51,976	19,575	37,450
REENLISTMENTS	64,762	25,434	19,721	4,493	15,114	61,610	27,370	19,138	4,672	10,430
REENLISTMENT RATE	39.1%	50.6%	36.7%	23.2%	35.8%	38.2%	52.4%	36.8%	23.9%	27.9%
FY 1981 (9 MOS)										
ELIGIBLES	112,000	27,480	36,717	15,981	31,822	104,683	27,641	34,797	15,929	26,316
REENLISTMENTS	51,727	16,283	16,868	4,475	14,101	44,866	16,444	15,271	4,507	8,644
REENLISTMENT RATE	46.2%	59.3%	45.9%	28.0%	44.3%	42.9%	59.5%	43.9%	28.3%	32.8%

TABLE P29.20-29.34
DEPARTMENT OF DEFENSE
REENLISTMENT RATES BY SERVICE

	A/ "UNADJUSTED" REENLISTMENT RATES FOR CAREER REGULARS					B/ "ADJUSTED" REENLISTMENT RATES FOR CAREER REGULARS				
	TOTAL DOD	ARMY	NAVY	MARINE CORPS	AIR FORCE	TOTAL DOD	ARMY	NAVY	MARINE CORPS	AIR FORCE
FY 1979										
ELIGIBLES	171,998	81,940	29,614	15,987	44,457	162,691	75,320	29,290	15,743	42,338
REENLISTMENTS	117,337	54,416	18,418	8,291	36,212	108,625	47,791	18,408	8,037	34,389
REENLISTMENT RATE	68.2%	66.4%	62.2%	51.9%	81.5%	66.8%	63.5%	62.8%	51.1%	81.2%
FY 1980										
ELIGIBLES	177,900	82,722	32,581	15,668	46,929	173,720	84,490	31,605	15,353	42,272
REENLISTMENTS	125,498	57,359	21,835	7,895	38,409	121,884	59,124	21,362	7,565	33,833
REENLISTMENT RATE	70.5%	69.3%	67.0%	50.4%	81.8%	70.2%	70.0%	67.6%	49.3%	80.0%
FY 1981 (9 MOS)										
ELIGIBLES	129,887	59,019	29,145	4,311	37,412	126,581	64,779	26,839	6,691	31,272
REENLISTMENTS	100,765	43,547	21,785	3,275	32,158	97,699	49,306	19,688	2,659	26,046
REENLISTMENT RATE	77.6%	73.8%	74.7%	76.0%	86.0%	77.2%	76.1%	73.4%	72.0%	83.3%

DEFINITIONS:
A/ "UNADJUSTED REENLISTMENT RATE" - THE RATIO OF TOTAL REENLISTMENTS OCCURRING IN A GIVEN PERIOD TO TOTAL SEPARATIONS ELIGIBLE TO REENLIST IN THE SAME PERIOD, EXPRESSED AS A PERCENTAGE.
B/ "ADJUSTED REENLISTMENT RATE" - THE "UNADJUSTED" RATE ADJUSTED TO EXCLUDE THE EFFECTS OF: (1) EARLY SEPARATIONS FOR IMMEDIATE REENLISTMENTS AND (2) OTHER EARLY DISCHARGES OF ELIGIBLES UNDER EARLY RELEASE PROGRAMS.

TABLE P309A

DEPARTMENT OF DEFENSE
ACTIVE DUTY MILITARY PERSONNEL STRENGTHS BY REGIONAL AREA AND BY COUNTRY

JUNE 30, 1961

REGIONAL AREA/COUNTRY	TOTAL	ARMY	AIR FORCE	NAVY	MARINE CORPS
TOTAL WORLDWIDE	2,070,645	773,806	566,973	541,118	188,748
ASHORE	1,852,472	773,806	566,973	330,388	181,305
AFLOAT	218,173	-	-	210,730	7,443
U.S. TERRITORY AND SPECIAL LOCATIONS	1,579,657	516,656	454,153	454,344	154,504
CONTINENTAL U.S.	1,258,379	458,848	406,989	256,595	135,947
ALASKA	20,211	8,046	10,513	1,447	205
HAWAII	44,315	17,352	6,374	11,120	9,469
AMERICAN SAMOA	1	1	-	-	-
GUAM	9,103	20	3,994	4,727	362
JOHNSTON ATOLL	148	140	8	-	-
MIDWAY ISLANDS	454	-	-	454	-
PUERTO RICO	3,547	369	50	2,948	180
TRUST TERRITORY OF THE PACIFIC ISLANDS	38	38	-	-	-
U.S. MISCELLANEOUS PACIFIC ISLANDS	2	-	-	-	2
VIRGIN ISLANDS OF THE U.S.	9	7	-	2	-
WAKE ISLAND	6	-	6	-	-
TRANSIENTS	88,261	31,835	26,219	22,010	8,197
AFLOAT	155,183	-	-	155,041	142
TOTAL FOREIGN COUNTRIES	490,988	257,150	112,820	86,774	34,244
ASHORE	427,998	257,150	112,820	31,085	26,943
AFLOAT	62,990	-	-	55,689	7,301
1) WESTERN & SOUTHERN EUROPE	331,377	219,026	78,329	29,656	4,366
AUSTRIA	32	6	5	1	20
BELGIUM*	2,119	1,330	650	109	30
CYPRUS	14	2	1	-	11
DENMARK*	45	6	15	14	10
FINLAND	20	5	3	2	10
FRANCE*	71	19	15	6	31
GERMANY (FED REPUBLIC & WEST BERLIN)*	246,887	210,618	35,858	293	116
GREECE*	3,310	494	2,395	407	14
GREENLAND*	304	-	304	-	-
ICELAND*	2,858	4	1,073	1,670	111
IRELAND	6	2	2	-	2
ITALY*	12,193	4,024	4,263	3,643	263
LUXEMBOURG*	7	-	-	-	7
MALTA	1	1	-	-	-
NETHERLANDS*	2,431	769	1,640	13	9
NORWAY*	230	38	123	32	37
PORTUGAL*	1,395	71	1,004	311	9
SPAIN	8,786	28	4,937	3,643	178

TABLE P309A

DEPARTMENT OF DEFENSE
ACTIVE DUTY MILITARY PERSONNEL STRENGTHS BY REGIONAL AREA AND BY COUNTRY
JUNE 30, 1981

REGIONAL AREA/COUNTRY	TOTAL	ARMY	AIR FORCE	NAVY	MARINE CORPS
SWEDEN	17	1	6	4	6
SWITZERLAND	34	4	4	2	24
TURKEY*	5,017	1,146	3,793	61	17
UNITED KINGDOM*	25,266	458	22,238	2,275	295
AFLOAT	20,334	-	-	17,168	3,166
*EUROPEAN NATO	(302,133)	(218,977)	(73,371)	(8,836)	(949)
(2) EAST ASIA & PACIFIC	117,112	30,751	31,756	28,574	26,031
AUSTRALIA	643	22	254	356	11
BURMA	11	3	2	-	6
CHINA	13	4	2	2	5
HONG KONG	38	5	6	13	14
INDONESIA	53	15	13	14	11
JAPAN (INCLUDING OKINAWA)	46,240	2,312	14,108	6,931	22,889
MALAYSIA	17	8	2	-	7
NEW ZEALAND	69	2	11	50	6
NORFOLK ISLAND	1	-	1	-	-
PHILIPPINES	14,552	29	8,422	4,963	1,138
REPUBLIC OF KOREA	37,608	28,298	8,911	302	97
SINGAPORE	24	4	1	11	8
THAILAND	95	49	23	11	12
AFLOAT	17,748	-	-	15,921	1,827
(3) AFRICA, NEAR EAST & SOUTH ASIA	19,647	516	588	18,060	483
AFGHANISTAN	7	2	-	-	5
ALGERIA	2	2	-	-	-
BAHRAIN	64	2	-	62	-
BANGLADESH	10	2	-	-	8
BRITISH INDIAN OCEAN TERRITORY (INCLUDES DIEGO GARCIA)	1,459	-	3	1,456	-
CAMEROON	7	2	-	-	5
CONGO	6	-	-	-	6
EGYPT	179	18	108	30	23
ETHIOPIA	7	-	-	-	7
GABON	7	-	-	-	7
GHANA	10	3	-	-	7
INDIA	40	4	4	5	27
ISRAEL	101	43	24	8	26
IVORY COAST	10	3	-	-	7
JORDAN	26	15	5	-	6
KENYA	31	8	6	-	17
KUWAIT	26	19	1	-	6

TABLE P309A

DEPARTMENT OF DEFENSE
ACTIVE DUTY MILITARY PERSONNEL STRENGTHS BY REGIONAL AREA AND BY COUNTRY

JUNE 30, 1981

REGIONAL AREA/COUNTRY	TOTAL	ARMY	AIR FORCE	NAVY	MARINE CORPS
LEBANON	17	2	2	1	12
LESOTHO	1	-	-	-	1
LIBERIA	18	7	2	4	5
MADAGASCAR	7	-	-	1	6
MALAWI	2	2	-	-	-
MALI	6	-	-	-	6
MAURITIUS	6	-	-	-	6
MOROCCO	49	9	8	3	29
NEPAL	11	2	-	-	9
NIGER	6	-	-	-	6
NIGERIA	16	7	2	-	7
OMAN	4	1	1	1	1
PAKISTAN	28	5	6	1	16
ST. HELENA (INCLUDES ASCENSION ISLAND)	13	-	13	-	-
SAUDI ARABIA	763	312	382	56	13
SENEGAL	10	-	-	2	8
SEYCHELLES	4	-	4	-	-
SOMALIA	8	2	-	-	6
SOUTH AFRICA	20	3	4	2	11
SRI LANKA	9	-	-	3	6
SUDAN	17	6	2	-	9
SYRIA	13	3	-	-	10
TANZANIA, UNITED REPUBLIC OF	6	-	-	-	6
TUNISIA	24	13	1	1	9
UPPER VOLTA	6	-	-	-	6
YEMEN (SANA)	22	11	5	-	6
ZAIRE	22	8	5	-	9
ZAMBIA	5	-	-	-	5
AFLOAT	16,542	-	-	16,424	118
(4) WESTERN HEMISPHERE	22,108	6,733	2,123	9,971	3,281
ANTIGUA	116	-	1	115	-
ARGENTINA	24	4	6	6	8
BAHAMAS, THE	38	-	2	31	5
BARBADOS	5	-	-	1	4
BERMUDA	1,336	-	-	1,251	85
BOLIVIA	12	5	1	-	6
BRAZIL	220	12	6	6	196
CANADA	645	9	241	382	13
CHILE	16	3	1	1	11
COLOMBIA	25	7	4	2	12

TABLE P309A

DEPARTMENT OF DEFENSE
ACTIVE DUTY MILITARY PERSONNEL STRENGTHS BY REGIONAL AREA AND BY COUNTRY
JUNE 30, 1981

REGIONAL AREA/COUNTRY	TOTAL	ARMY	AIR FORCE	NAVY	MARINE CORPS
COSTA RICA	10	2	-	-	8
CUBA (GUANTANAMO)	2,128	-	1	1,671	456
DOMINICAN REPUBLIC	20	4	1	4	11
ECUADOR	21	5	4	3	9
EL SALVADOR	53	28	3	-	22
GUATEMALA	16	5	1	-	10
GUYANA	6	-	-	-	6
HAITI	9	2	1	-	6
HONDURAS	19	3	7	1	8
JAMAICA	12	-	-	1	11
MEXICO	26	9	4	2	11
NICARAGUA	10	2	1	-	7
PANAMA	8,691	6,614	1,817	307	153
PARAGUAY	14	3	1	1	9
PERU	23	5	7	3	8
SURINAME	1	1	-	-	-
TURKS AND CAICOS ISLANDS	1	-	-	-	-
URUGUAY	14	4	1	3	6
VENEZUELA	31	6	11	4	10
AFLOAT	8,366	-	-	6,176	2,190
(5) ANTARCTICA	71	-	-	71	-
(6) EASTERN EUROPE	175	67	19	6	63
BULGARIA	10	2	2	-	6
CZECHOSLOVAKIA	10	-	3	-	7
GERMAN DEMOCRATIC REPUBLIC	53	46	-	-	7
HUNGARY	13	3	1	-	9
POLAND	15	3	2	-	10
ROMANIA	15	3	2	-	10
UNION OF SOVIET SOCIALIST REPUBLICS	43	7	5	5	26
YUGOSLAVIA	16	3	4	1	8
(7) UNDISTRIBUTED	498	57	5	436	-

NOTE: ASHORE INCLUDES TEMPORARILY SHORE-BASED.

Section 2

RESERVE MILITARY MANPOWER STATISTICS

TABLE R11.0
 DEPARTMENT OF DEFENSE
 RESERVE COMPONENT STRENGTH SUMMARY

JULY 31, 1981

TYPE OF DUTY	RESERVES BY RESERVE CATEGORY	
	TOTAL	ENLISTED A/ OFFICER
TOTAL	2,104,599	1,419,334
READY RESERVE NOT ON ACTIVE DUTY	1,187,664	992,121
ACTIVE STATUS	1,178,633	983,806
INACTIVE STATUS B/	9,031	8,315
STANDBY RESERVE ON ACTIVE STATUS	73,182	7,884
INACTIVE STATUS	21,841	6,691
	51,341	1,193
RETIRED - RETIRED STATUS	843,753	419,329
	424,424	

A/ INCLUDES OFFICER CANDIDATES.

B/ INACTIVE NATIONAL GUARD AND REP'S IN NON-PAY STATUS.

SELECTED RESERVE	RESERVES IN "PAID STATUS"	
	PAY GROUP	ENLISTED OFFICER
A, B, C, F, P, T, Q	686,587	119,829
U, AGR*		766,758
	TOTAL	

* FULL-TIME ACTIVE DUTY SUPPORT PERSONNEL

TABLE R12.0
 DEPARTMENT OF DEFENSE
 RESERVE STRENGTH - OFFICER AND ENLISTED
 NOT ON ACTIVE DUTY

DATE	TOTAL	OFFICERS	ENLISTED A/
31 OCT 1980	2,178,423	667,943	1,510,480
30 NOV 1980	2,177,167	667,572	1,509,595
31 DEC 1980	2,210,566	687,536	1,523,030
31 JAN 1981	2,210,094	686,979	1,523,115
28 FEB 1981	2,226,157	703,607	1,522,550
31 MAR 1981	2,211,722	687,560	1,524,162
30 APR 1981	2,217,384	688,197	1,529,187
31 MAY 1981	2,218,769	687,765	1,531,004
30 JUN 1981	2,213,878	687,877	1,526,001
31 JUL 1981	2,104,599	685,265	1,419,334

A/ INCLUDES OFFICER CANDIDATES.

TABLE R13.0
 DEPARTMENT OF DEFENSE
 READY RESERVE AND ACTIVE DUTY STRENGTH COMPARED TO STATUTORY LIMITATION
 JULY 31, 1981

	TOTAL	ON ACTIVE DUTY	NOT ON ACTIVE DUTY
STATUTORY READY RESERVE LIMITATION A/	2,900,000		
DIFFERENCE	1,519,680		
READY RESERVE AND ACTIVE DUTY STRENGTH	1,380,320	172,753	1,207,567
COAST GUARD RESERVE	20,979	1,076	19,903
DOD RESERVE	1,359,341	171,677	1,187,664
ARMY			
NATIONAL GUARD B/	772,590	53,492	719,098
ARMY RESERVE	293,572	645	292,927
	479,018	52,847	426,171
NAVAL RESERVE	258,474	69,700	188,774
MARINE CORPS RESERVE	88,256	5,292	82,964
AIR FORCE			
AIR NATIONAL GUARD C/	240,021	43,193	196,828
AIR FORCE RESERVE	98,057	272	97,785
	141,964	42,921	99,043

A/ SECTION 205(B), ARMED FORCES RESERVE ACT OF 1952, AS AMENDED.
 B/ INCLUDES "INACTIVE NATIONAL GUARD" NUMBERING 9,031 AND REP'S NUMBERING 1,644.
 C/ INCLUDES REP'S IN A NON-PAY STATUS NUMBERING 260.

TABLE R14.0
 DEPARTMENT OF DEFENSE
 RESERVE COMPONENT PERSONNEL BY RESERVE CATEGORY
 NOT ON ACTIVE DUTY

DATE	TOTAL	READY	STANDBY	RETIRED
31 OCT 1980	2,178,423	1,270,690	85,181	822,552
30 NOV 1980	2,177,167	1,270,106	83,901	823,160
31 DEC 1980	2,210,566	1,274,399	82,792	853,375
31 JAN 1981	2,210,094	1,271,852	83,316	854,926
28 FEB 1981	2,226,157	1,274,643	82,400	869,114
31 MAR 1981	2,211,722	1,279,823	81,440	850,459
30 APR 1981	2,217,384	1,286,268	80,859	850,257
31 MAY 1981	2,218,769	1,288,066	79,910	850,793
30 JUN 1981	2,213,878	1,286,442	79,163	848,273
31 JUL 1981	2,104,599	1,187,664	73,182	843,753

TABLE R14.0

DEPARTMENT OF DEFENSE
RESERVE COMPONENT PERSONNEL BY RESERVE CATEGORY
NOT ON ACTIVE DUTY

OFFICERS

DATE	TOTAL	READY	STANDBY	RETIRED
31 OCT 1980	667,943	188,850	75,683	403,410
30 NOV 1980	667,572	189,242	74,755	403,575
31 DEC 1980	687,536	189,832	73,824	423,880
31 JAN 1981	686,979	188,085	74,589	424,305
28 FEB 1981	703,607	188,266	73,813	441,528
31 MAR 1981	687,560	189,537	72,966	425,057
30 APR 1981	688,197	190,492	72,272	425,433
31 MAY 1981	687,765	190,559	71,479	425,727
30 JUN 1981	687,877	190,955	70,934	425,988
31 JUL 1981	685,265	195,543	65,298	424,424

TABLE R14.0
 DEPARTMENT OF DEFENSE
 RESERVE COMPONENT PERSONNEL BY RESERVE CATEGORY
 NOT ON ACTIVE DUTY

ENLISTED A/

DATE	TOTAL	READY	STANDBY	RETIRED
31 OCT 1980	1,510,480	1,081,840	9,498	419,142
30 NOV 1980	1,509,595	1,080,864	9,146	419,585
31 DEC 1980	1,523,030	1,084,567	8,968	429,495
31 JAN 1981	1,523,115	1,083,767	8,727	430,621
28 FEB 1981	1,522,550	1,086,377	8,587	427,586
31 MAR 1981	1,524,162	1,090,286	8,474	425,402
30 APR 1981	1,529,187	1,095,776	8,587	424,824
31 MAY 1981	1,531,004	1,097,507	8,431	425,066
30 JUN 1981	1,526,001	1,095,487	8,229	422,285
31 JUL 1981	1,419,334	992,121	7,884	419,329

A/ INCLUDES OFFICER CANDIDATES.

TABLE R18.0

DEPARTMENT OF DEFENSE
SELECTED RESERVE

DATE	TOTAL	DRILL PAY STATUS	INITIAL ACTIVE DUTY TRAINING
31 OCT 1980	850,210	817,292	32,918
30 NOV 1980	853,042	819,837	33,205
31 DEC 1980	851,529	821,896	29,633
31 JAN 1981	864,007	833,148	30,859
28 FEB 1981	869,410	869,410	
31 MAR 1981	874,431	874,431	
30 APR 1981	876,732	876,732	
31 MAY 1981	880,291	880,291	
30 JUN 1981	884,232	884,232	
31 JUL 1981	886,587	886,587	

TABLE R21.0

DEPARTMENT OF DEFENSE
RESERVE PERSONNEL ON ACTIVE DUTY BY COMPONENT

JULY 31, 1981

COMPONENT/PERSONNEL	TOTAL	OFFICER	ENLISTED A/
TOTAL DEPARTMENT OF DEFENSE	171,677	117,080	54,597
ARMY - TOTAL	53,492	52,315	1,177
NATIONAL GUARD OF THE U. S.	645	408	237
ARMY RESERVE	52,847	51,907	940
NAVAL RESERVE	69,700	17,714	51,986
MARINE CORPS RESERVE	5,292	4,601	691
AIR FORCE - TOTAL	43,193	42,450	743
AIR NATIONAL GUARD OF THE U. S.	272	195	77
AIR FORCE RESERVE	42,921	42,255	666

A/ INCLUDES OFFICER CANDIDATES.

TABLE R22.0
 DEPARTMENT OF DEFENSE
 RESERVE STRENGTH ON ACTIVE DUTY A/

DATE	TOTAL DOD	ARMY			NAVAL RESERVE	MARINE CORPS RESERVE	AIR FORCE	
		NATIONAL GUARD	ARMY RESERVE	AIR NATIONAL GUARD			AIR FORCE RESERVE	
31 OCT 1980	168,493	1,265	52,726	65,322	5,165	311	43,704	
30 NOV 1980	169,693	1,181	52,620	66,460	5,112	304	44,016	
31 DEC 1980	169,080	1,076	52,679	66,927	4,989	289	43,120	
31 JAN 1981	169,426	894	52,732	67,308	5,015	291	43,186	
28 FEB 1981	170,088	866	52,485	68,392	4,999	284	43,062	
31 MAR 1981	170,400	810	52,156	69,003	5,060	284	43,087	
30 APR 1981	169,760	758	52,075	68,616	4,955	248	43,108	
31 MAY 1981	170,053	705	52,147	68,650	4,899	255	43,397	
30 JUN 1981	170,500	634	52,624	68,899	4,939	274	43,130	
31 JUL 1981	171,677	645	52,847	69,700	5,292	272	42,921	

A/ CONTINUOUS OR EXTENDED ACTIVE DUTY.
 EXCLUDES ACTIVE DUTY FOR RESERVE TRAINING.

TABLE R23.0

DEPARTMENT OF DEFENSE
RESERVE PERSONNEL BY COMPONENT AND CATEGORY
NOT ON ACTIVE DUTY

JULY 31, 1981

COMPONENT/ PERSONNEL	TOTAL	NAT'L GUARD OF THE U.S. A/	ARMY RESERVE	NAVAL RESERVE	MARINE CORPS RESERVE	AIR B/ NAT'L GUARD OF THE U.S.	AIR FORCE RESERVE
TOTAL	2,104,599	292,927	889,510	339,083	91,612	97,785	393,682
OFFICER	685,265	38,847	294,452	161,866	12,073	12,089	165,938
ENLISTED C/	1,419,334	254,080	595,058	177,217	79,539	85,696	227,744
READY RESERVE	1,187,664	292,927	426,171	188,774	82,964	97,785	99,043
OFFICER	195,543	38,847	80,488	35,674	6,035	12,089	22,410
ENLISTED C/	992,121	254,080	345,683	153,100	76,929	85,696	76,633
STANDBY RESERVE	73,182	-	11,876	20,526	1,944	-	38,836
OFFICER	65,298	-	10,990	18,440	1,770	-	34,098
ENLISTED	7,884	-	886	2,086	174	-	4,738
ACTIVE STATUS	21,841	-	7,648	1,986	1,845	-	10,362
OFFICER	15,150	-	6,762	79	1,671	-	6,638
ENLISTED	6,691	-	886	1,907	174	-	3,724
INACTIVE STATUS	51,341	-	4,228	18,540	99	-	28,474
OFFICER	50,148	-	4,228	18,361	99	-	27,460
ENLISTED	1,193	-	-	179	-	-	1,014
RETIRED RESERVE	843,753	-	451,463	129,783	6,704	-	255,803
OFFICER	424,424	-	202,974	107,752	4,268	-	109,430
ENLISTED	419,329	-	248,489	22,031	2,436	-	146,373

A/ INCLUDES "INACTIVE NATIONAL GUARD" NUMBERING 9,031 TOTAL, 716 OFFICERS, 8,315 ENLISTED
AND RESERVE ENLISTMENT PROGRAM (REPS) IN A NON-PAY STATUS NUMBERING 1,644.

B/ INCLUDES REPS IN A NON-PAY STATUS NUMBERING 260

C/ INCLUDES OFFICER CANDIDATES

TABLE R24.0

DEPARTMENT OF DEFENSE
RESERVE STRENGTH NOT ON ACTIVE DUTY A/

DATE	TOTAL DOD	ARMY				MARINE CORPS RESERVE	AIR FORCE	
		B/ NATIONAL GUARD	ARMY RESERVE	NAVAL RESERVE	AIR NATIONAL GUARD		AIR FORCE RESERVE	
31 OCT 1980	2,178,423	375,199	850,134	337,302	102,455	96,659	416,674	
30 NOV 1980	2,177,167	376,807	848,774	337,534	101,664	96,570	415,818	
31 DEC 1980	2,210,566	378,911	881,680	337,350	100,528	96,695	415,402	
31 JAN 1981	2,210,094	381,695	880,477	337,813	99,201	96,863	414,045	
28 FEB 1981	2,226,157	384,942	899,364	338,217	98,187	97,060	408,387	
31 MAR 1981	2,211,722	387,748	881,501	340,306	96,798	97,694	407,675	
30 APR 1981	2,217,384	389,786	884,698	342,469	96,568	97,848	406,015	
31 MAY 1981	2,218,769	391,251	885,437	342,364	96,466	97,799	405,452	
30 JUN 1981	2,213,878	392,101	887,364	340,104	95,469	97,797	401,043	
31 JUL 1981	2,104,599	292,927	889,510	339,083	91,612	97,785	393,682	

A/ INCLUDES RESERVES ON ACTIVE DUTY
FOR RESERVE TRAINING PURPOSES.

B/ INCLUDES "INACTIVE" NATIONAL GUARD.

TABLE R26.5

DEPARTMENT OF DEFENSE
SELECTED RESERVE DRILL PAY STRENGTH

JULY 31, 1981

COMPONENT/ PERSONNEL	TOTAL	DRILL PAY STATUS A/	INITIAL ACTIVE DUTY TRAINING
TOTAL DOD	886,587	886,587	-
OFFICERS	119,829	119,829	-
ENLISTED	766,758	766,758	-
ARMY NATIONAL GUARD	382,252	382,252	-
OFFICERS	38,131	38,131	-
ENLISTED	344,121	344,121	-
ARMY RESERVE	223,109	223,109	-
OFFICERS	37,391	37,391	-
ENLISTED	185,718	185,718	-
NAVAL RESERVE	87,654	87,654	-
OFFICERS	16,795	16,795	-
ENLISTED	70,859	70,859	-
MARINE CORPS RESERVE	36,356	36,356	-
OFFICERS	2,551	2,551	-
ENLISTED	33,805	33,805	-
AIR NATIONAL GUARD	97,673	97,673	-
OFFICERS	12,089	12,089	-
ENLISTED	85,584	85,584	-
AIR FORCE RESERVE	59,543	59,543	-
OFFICERS	12,872	12,872	-
ENLISTED	46,671	46,671	-

A/ INCLUDES PAY GROUPS A, B, C, F, P, T, Q, U, AGR (FULL-TIME ACTIVE DUTY
SUPPORT PERSONNEL)

G L O S S A R Y O F T E R M S

Active Duty. Full-time duty in the active service of a uniformed service, including duty on the active list, full-time training duty, annual training duty, and attendance while in the active service, at a school designated as a service school by law or by the Secretary concerned.

Actual Strength. The number of personnel in, or projected to be in, an organization or account at a specified point in time.

Armed Forces of the United States. Includes the Army, Navy, Air Force, Marine Corps, and Coast Guard, and all components thereof.

Assigned Strength. Actual strength of an entire service, not necessarily equal to combined unit actual strengths since individuals may be assigned but not joined.

Authorized Strength. The total strength authorized by Congress (for internal Service applications only). Authorized strength may be used synonymously with documented strength as defined below.

Cadet or Midshipman Enrolled in the Reserve Officers Training Corps (ROTC) Program. A member of the Senior Reserve Officer Training Corps (SROTC) under 10 U.S.C. 2107 for tuition, fees, books, and laboratory expenses.

Continental United States. Unless otherwise qualified, means the 48 contiguous States and the District of Columbia.

Enlisted Member. A person enlisted, enrolled, or conscripted into the military service.

Enlistment. (1) A voluntary entrance into military service under enlisted status, as distinguished from induction through Selective Service.

(2) A period of time, contractual or prescribed by law, which enlisted members serve between enrollment and discharge.

Officer. A commissioned or warrant officer.

Reserve Components. The Army National Guard of the United States, Army Reserve, Naval Reserve, Marine Corps Reserve, Air National Guard of the United States, Air Force Reserve, Coast Guard Reserve, and the Reserve Corps of the Public Health Service.

Service Academy Cadet or Midshipman. A person in training at one of the service academies to become a commissioned officer.

Transients. All military members who are not available for duty while executing permanent change of station (PCS) orders. Transients shall comprise all military personnel in a travel, proceed, leave enroute, or temporary duty enroute status on PCS orders to execute an accession, separation, training, operational, or rotational move.

Warrant Officer. A person who holds a commission or warrant in a warrant officer grade.

