

AD-A153 306

MILITARY MANPOWER STATISTICS, DECEMBER, FY-83. (U)  
WASHINGTON HEADQUARTERS SERVICE (DOD) DIR FOR INFO  
OP & RPTS. DEC 82. DIOR/MO3-83/03

1/1

UNCLASSIFIED

F/G 5/9

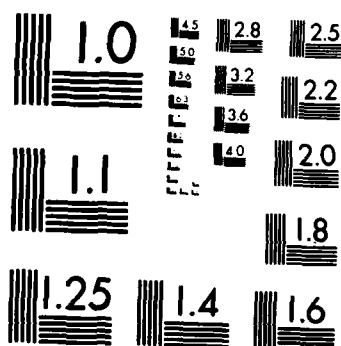
N/L

1 OF 1  
AD A153 306

END  
FILMED  
110485

# 1 OF 1

# AD-A153 306



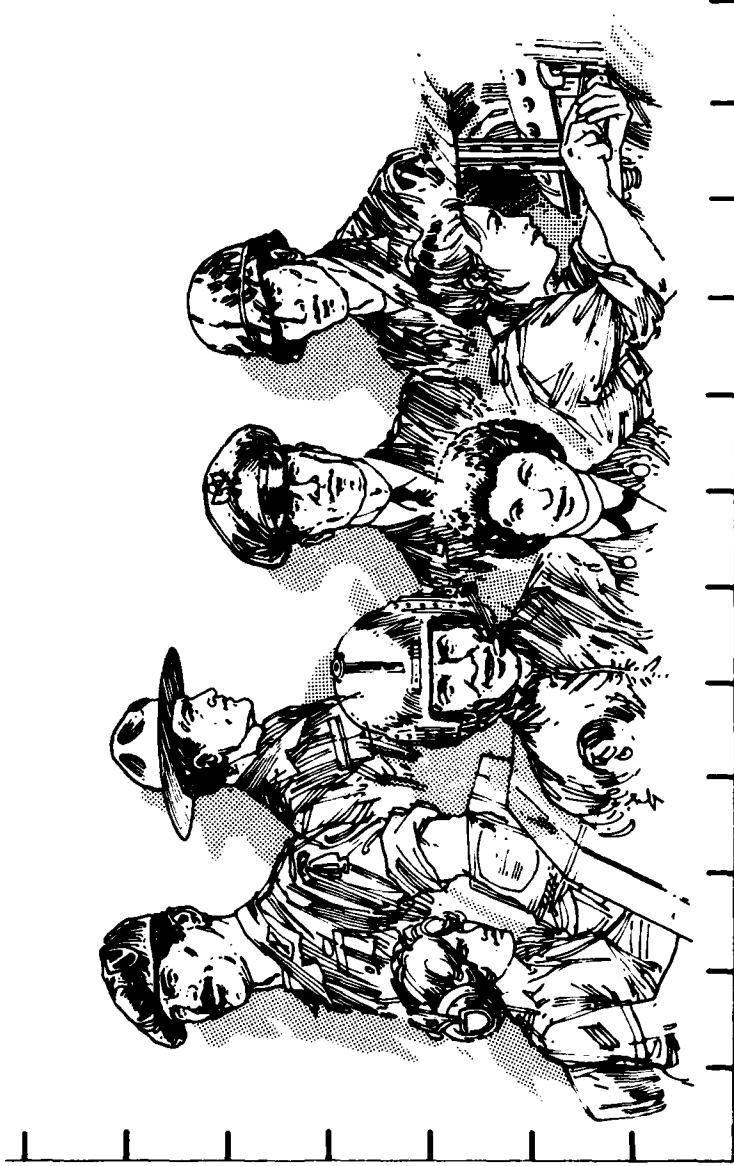
MICROCOPY RESOLUTION TEST CHART  
NATIONAL BUREAU OF STANDARDS-1963-A

**THIS REPORT IS UNCLASSIFIED AND  
ITS DISTRIBUTION IS UNLIMITED**



# Department of Defense **MILITARY MANPOWER STATISTICS**

**DECEMBER 1982**



Department of Defense

**Military Manpower Statistics**

December 1982

Issued Monthly by

Washington Headquarters Services  
Directorate for Information  
Operations and Reports

## F O R E W O R D

MILITARY MANPOWER STATISTICS (MMS) is a monthly publication prepared by the Washington Headquarters Services, Directorate for Information Operations and Reports (WHS/DIOR) of the Office of the Secretary of Defense.

The MMS report presents audited statistical data pertaining to military personnel on active duty and personnel in military reserve components, for the current fiscal year on a monthly basis. The March, June, September, and December issues contain quarterly summaries of certain military manpower data as annotated in the Table of Contents. Although these tables are revised quarterly, they are published without changes in two subsequent monthly editions of this publication. The publication is generated from a computerized data base developed and maintained by the Manpower Management Information Division of WHS/DIOR.

The report is approved for public release at cost: distribution unlimited. However, all requests for this publication and DoD-wide data contained therein should be referred to WHS/DIOR or cognizant offices in the Office of the Secretary of Defense. Questions concerning the material in this publication, and requests for additional copies, should be addressed to the Director for Information Operations and Reports, WHS, Room 1C535, The Pentagon, Washington, D.C. 20301. (When ordering please cite publication number MO3.)

T A B L E O F C O N T E N T S

<u>Section 1</u>	<u>Active Duty Military Manpower Statistics</u>	<u>Page</u>
Figure 1-1	Department of Defense Active Duty Military Personnel	3
Table P10	Summary of Military Personnel	5
Table P11	Department of Defense Manpower Comparison	6
Table P22.1	Total Active Duty Military Personnel by Service	7
Table P23.1	Active Duty Officer Personnel and Percent of Total Military Personnel by Service	8
Table P23.3	Total Active Duty Military Personnel by Type	9
Table P23.4	Army Active Duty Military Personnel by Type	10
Table P23.5	Navy Active Duty Military Personnel by Type	11
Table P23.6	Marine Corps Active Duty Military Personnel by Type	12
Table P23.7	Air Force Active Duty Military Personnel by Type	13
Table P23.41	Army Active Duty Military Personnel	14
Table P23.51	Navy Active Duty Military Personnel	15
Table P23.61	Marine Corps Active Duty Military Personnel	16
Table P23.71	Air Force Active Duty Military Personnel	17
Table P25.6	Women Military Personnel on Active Duty Officers and Enlisted by Service	18

<u>Section 1</u>	<u>Active Duty Military Manpower Statistics</u>	<u>Page</u>
Table P26.0	Military Personnel on Active Duty by Grade in Which Serving	19
Table P26.02	Female Military Personnel on Active Duty by Grade in Which Serving	20
Table P26.04	Military Personnel on Active Duty by Grade in Which Serving - Regular	21
Table P26.05	Military Personnel on Active Duty by Grade in Which Serving - Reserve	22
Table P27.1	Summary of Enlisted Personnel Procurement	23
Table P27.21	Army Enlisted Personnel Procurement	24
Table P27.22	Navy Enlisted Personnel Procurement	25
Table P27.23	Marine Corps Enlisted Personnel Procurement	26
Table P27.24	Air Force Enlisted Personnel Procurement	27
*Table P29.20-29.34	Reenlistment Rates by Service	28
*Table P309A	Active Duty Military Personnel Strength by Regional Area and by Country	31

\* Prepared quarterly, this table is updated in March, June, September and December.

<u>Section 2</u>	<u>Reserve Military Manpower Statistics</u>	<u>Page</u>
Table R11.0	Reserve Component Strength Summary	37
Table R12.0	Reserve Strength - Officer and Enlisted Not on Active Duty	38
Table R13.0	Ready Reserve and Active Duty Strength Compared to Statutory Limitation	39
Table R14.0	Reserve Component Personnel by Reserve Category Not on Active Duty - Total	40
Table R14.0	Reserve Component Personnel by Reserve Category Not on Active Duty - Officers	41
Table R14.0	Reserve Component Personnel by Reserve Category Not on Active Duty - Enlisted	42
Table R21.0	Reserve Personnel on Active Duty by Component	43
Table R22.0	Reserve Strength on Active Duty	44
Table R23.0	Reserve Personnel by Component and Category Not on Active Duty	45
Table R24.0	Reserve Strength Not on Active Duty	46
Table R26.5	Selected Reserve Strength	47
Glossary of Terms		49

Section 1

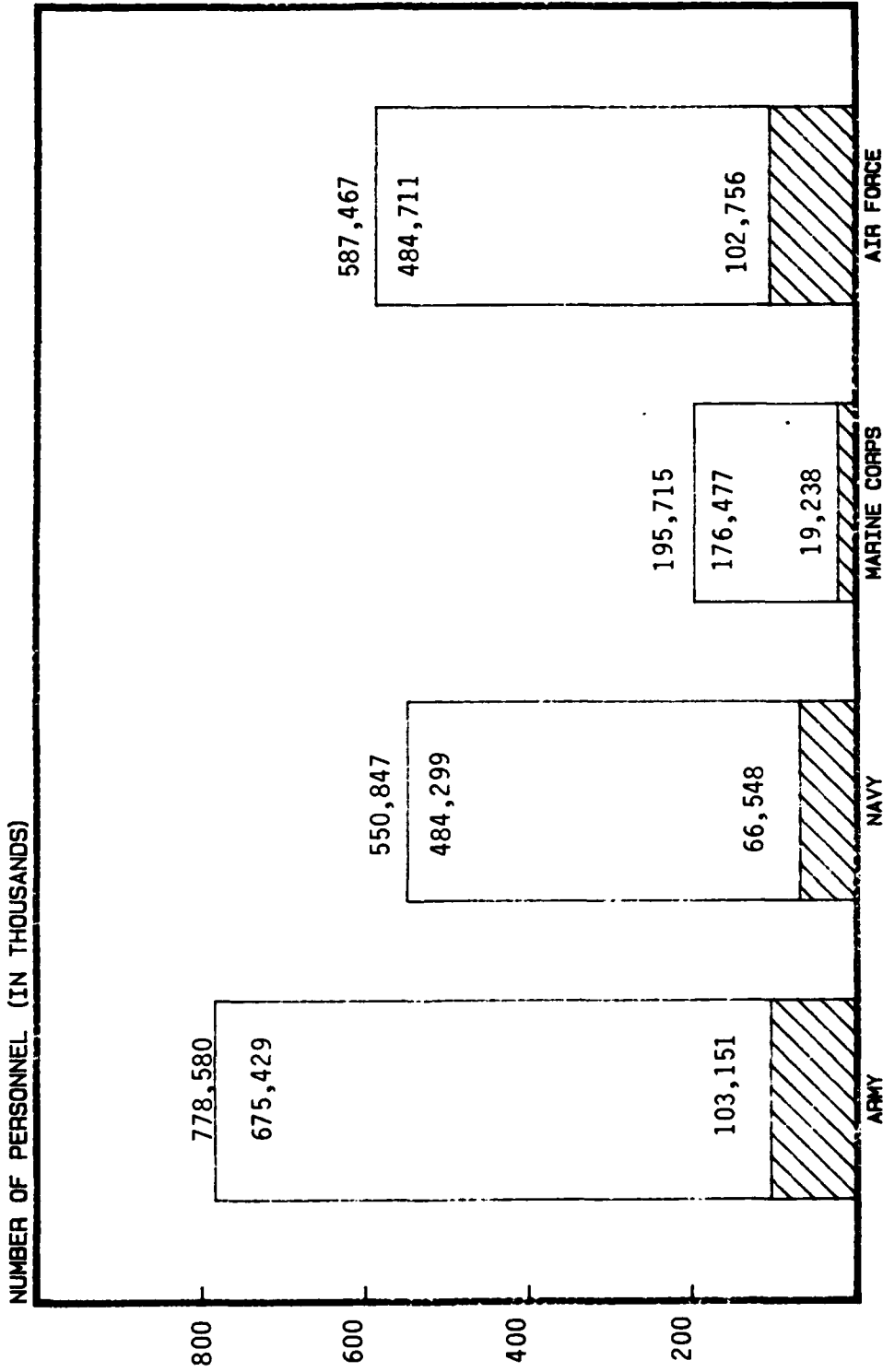
ACTIVE DUTY MILITARY MANPOWER STATISTICS\*

\*NOTE: Excluded from all total DOD strength figures for Fiscal Year 1983 in this Section are approximately 41,000 full-time military personnel who are paid from other than active duty military personnel appropriations. This group is funded from appropriations for reserve components and Corps of Engineers civil functions.

# DOD ACTIVE DUTY MILITARY PERSONNEL

DECEMBER 31, 1982

OFFICERS  ENLISTED/ CADETS 



MILITARY SERVICE

FIGURE 1-1

TABLE P10

DEPARTMENT OF DEFENSE  
SUMMARY OF MILITARY PERSONNEL

	TOTAL DOD	ARMY	NAVY	MARINE CORPS	AIR FORCE
1. ACTIVE DUTY MILITARY AS OF 31 DEC 1982					
OFFICER	291,693	103,151	66,548	19,238	102,756
ENLISTED	1,807,613	671,033	479,766	176,477	480,337
ACADEMY CADETS	13,303	4,396	4,533	-	4,374
TOTAL ACTIVE DUTY MILITARY	2,112,609	778,580	550,847	195,715	567,467
2. GUARD AND RESERVES AS OF 31 DEC 1982					
NATIONAL GUARD IN PAID STATUS	523,061	421,739	-	-	101,322
	512,425	411,321	-	-	101,104
RESERVES IN PAID STATUS	1,746,908	946,857	336,706	94,855	368,490
	469,286	257,356	107,665	40,502	63,763
TOTAL GUARD AND RESERVES IN PAID STATUS	2,269,969	1,368,596	336,706	94,855	469,812
	981,711	668,677	107,665	40,502	164,867
3. OFFICER TRAINING IN COLLEGES A/ AS OF MAY 1982	102,594	75,789	7,457	-	19,348

A/ EXCLUDES 191,316 IN JUNIOR DIVISION, MILITARY  
SCHOOLS AND NATIONAL DEFENSE CADETS CORPS.

TABLE P11  
 DOD MANPOWER COMPARISON  
 (MILITARY & CIVIL FUNCTIONS)

DATE	TOTAL DOD	ARMY			AIR FORCE			NAVY AND MARINE CORPS			A/ OSD/ JCS	
		MILI-TARY	CIVIL-IAN	TOTAL	MILI-TARY	CIVIL-IAN	TOTAL	NAVY MILI-TARY	MARINE CORPS MILI-TARY	B/ CIVIL-IAN		TOTAL
31 OCT 82	3,124,005	781,295	365,146	1,146,441	584,626	241,320	825,946	547,671	194,107	327,453	1,069,231	82,387
30 NOV 82	3,137,736	783,904	367,977	1,151,881	586,314	243,103	829,417	547,908	195,880	329,869	1,073,657	82,781
31 DEC 82	3,139,984	778,580	369,211	1,147,791	587,467	243,980	831,447	550,847	195,715	331,469	1,078,031	82,715

A/ CIVILIAN PERSONNEL. MILITARY PERSONNEL ASSIGNED TO OSD, OJCS AND OTHER DEFENSE ACTIVITIES ARE REPORTED BY THEIR RESPECTIVE SERVICES.

B/ -TOTAL PAID EMPLOYEES- AS REPORTED OFFICIALLY TO THE OFFICE OF PERSONNEL MANAGEMENT; EXCLUDES OVERSEAS SUPPORT PERSONNEL (INDIRECT HIRE).

TABLE P22.1

DEPARTMENT OF DEFENSE  
TOTAL ACTIVE DUTY MILITARY PERSONNEL BY SERVICE

DATE	TOTAL DOD	ARMY	NAVY	MARINE CORPS	AIR FORCE
OCT 31, 1982	2,107,699	781,295	547,671	194,107	584,626
NOV 30, 1982	2,114,006	783,904	547,908	195,880	586,314
DEC 31, 1982	2,112,609	778,580	550,847	195,715	587,467

TABLE P23.1

DEPARTMENT OF DEFENSE  
ACTIVE DUTY OFFICER PERSONNEL AND PERCENT OF TOTAL MILITARY PERSONNEL, BY SERVICE

DATE	TOTAL DOD		ARMY		NAVY		MARINE CORPS		AIR FORCE	
	NUMBER	%	NUMBER	%	NUMBER	%	NUMBER	%	NUMBER	%
OCT 31, 1982	290,847	13.8	103,232	13.2	66,365	12.1	18,922	9.7	102,328	17.5
NOV 30, 1982	291,369	13.8	103,247	13.2	66,622	12.2	18,866	9.6	102,634	17.5
DEC 31, 1982	291,693	13.8	103,151	13.2	66,548	12.1	19,238	9.8	102,756	17.5

TABLE P23.3

DEPARTMENT OF DEFENSE  
TOTAL ACTIVE DUTY MILITARY PERSONNEL BY TYPE

DATE	OFFICERS	ENLISTED	A/ OFFICER CANDIDATES	TOTAL
OCT 31, 1982	290,847	1,803,409	13,443	2,107,699
NOV 30, 1982	291,369	1,809,240	13,397	2,114,006
DEC 31, 1982	291,693	1,807,613	13,303	2,112,609

A/ CONSISTS OF THE FOLLOWING:  
FOR ARMY - CADETS, U. S. MILITARY ACADEMY  
FOR NAVY - MIDSHPMEN, U. S. NAVAL ACADEMY  
FOR AIR FORCE - CADETS, U. S. AIR FORCE ACADEMY

TABLE P23.4

DEPARTMENT OF DEFENSE  
ARMY ACTIVE DUTY MILITARY PERSONNEL BY TYPE

DATE	OFFICERS	ENLISTED	CADETS U.S. MILITARY ACADEMY	TOTAL
OCT 31, 1982	103,232	673,600	4,463	781,295
NOV 30, 1982	103,247	676,223	4,434	783,904
DEC 31, 1982	103,151	671,033	4,396	778,580

TABLE P23.5

DEPARTMENT OF DEFENSE  
NAVY ACTIVE DUTY MILITARY PERSONNEL BY TYPE

DATE	OFFICERS	ENLISTED	MIDSHIPMEN U. S. NAVAL ACADEMY	TOTAL
OCT 31, 1982	66,365	476,768	4,538	547,671
NOV 30, 1982	66,622	476,754	4,532	547,908
DEC 31, 1982	66,548	479,766	4,533	550,847

TABLE P23.6  
 DEPARTMENT OF DEFENSE  
 MARINE CORPS ACTIVE DUTY MILITARY PERSONNEL BY TYPE

DATE	OFFICERS	ENLISTED	TOTAL
OCT 31, 1982	18,922	175,185	194,107
NOV 30, 1982	18,666	177,014	195,680
DEC 31, 1982	19,238	176,477	195,715

TABLE P23.7

DEPARTMENT OF DEFENSE  
AIR FORCE ACTIVE DUTY MILITARY PERSONNEL BY TYPE

DATE	OFFICERS	ENLISTED	CADETS		TOTAL
			U.S.A.F.	ACADEMY	
OCT 31, 1982	102,328	477,856	4,442		584,626
NOV 30, 1982	102,634	479,249	4,431		586,314
DEC 31, 1982	102,756	480,337	4,374		587,467

TABLE P23.41

DEPARTMENT OF DEFENSE  
ARMY ACTIVE DUTY MILITARY PERSONNEL

REPORTED STRENGTH, AND ADJUSTMENTS TO REPORTED STRENGTH TO DERIVE "DIRECT PROGRAM STRENGTH" CHARGEABLE TO APPROPRIATION "MILITARY PERSONNEL, ARMY"

DATE	REPORTED STRENGTH	(LESS) REIMBURSABLES	OFF	ENL	TOTAL	OFFICER	ENLISTED	CADETS USMA
31 OCT 1982	781,295	469	269	780,557	102,763	673,331	4,463	
30 NOV 1982	783,904	466	264	783,174	102,781	675,959	4,434	
31 DEC 1982	776,560	462	274	777,844	102,689	670,759	4,396	

TABLE P23.51

DEPARTMENT OF DEFENSE  
NAVY ACTIVE DUTY MILITARY PERSONNEL

REPORTED STRENGTH, AND ADJUSTMENTS TO REPORTED STRENGTH TO DERIVE "DIRECT PROGRAM STRENGTH" CHARGEABLE TO APPROPRIATION "MILITARY PERSONNEL, NAVY"

DATE	REPORTED STRENGTH	(LESS)		DIRECT PROGRAM STRENGTH CHARGEABLE TO APPROPRIATION "MILITARY PERSONNEL, NAVY"			OFFICER CANDIDATES
		REIMBURSABLES	ENLISTED	TOTAL	OFFICER	ENLISTED	
31 OCT 1982	547,671	414	1,030	546,227	65,951	475,738	4,528
30 NOV 1982	547,908	414	1,035	546,459	66,208	475,719	4,532
31 DEC 1982	550,847	414	1,062	549,371	66,134	478,704	4,533

TABLE P23.61

DEPARTMENT OF DEFENSE  
MARINE CORPS ACTIVE DUTY MILITARY PERSONNEL

REPORTED STRENGTH, AND ADJUSTMENTS TO REPORTED STRENGTH TO DERIVE "DIRECT PROGRAM STRENGTH" CHARGEABLE TO APPROPRIATION "MILITARY PERSONNEL, MARINE CORPS"

DATE	REPORTED STRENGTH	(LESS) REIMBURSABLES	DIRECT PROGRAM STRENGTH CHARGEABLE TO APPN. "MILITARY PERSONNEL, MARINE CORPS"	OFFICER ENLISTED	ENLISTED	OFFICER ENLISTED	ENLISTED	OFFICER CANDIDATES
31 OCT 1982	194,107	26	194,077	4	18,896	175,181	-	-
30 NOV 1982	195,860	26	195,850	4	18,840	177,010	-	-
31 DEC 1982	195,715	26	195,686	3	19,212	176,474	-	-

TABLE P23.71

DEPARTMENT OF DEFENSE  
AIR FORCE ACTIVE DUTY MILITARY PERSONNEL

REPORTED STRENGTH, AND ADJUSTMENTS TO REPORTED STRENGTH TO DERIVE "DIRECT PROGRAM STRENGTH" CHARGEABLE TO APPROPRIATION "MILITARY PERSONNEL, AIR FORCE"

DATE	REPORTED STRENGTH	TOTAL	(LESS)		TOTAL	OFFICER	ENLISTED	ENLISTED	OFFICER	ENLISTED	TOTAL	DIRECT PROGRAM STRENGTH CHARGEABLE TO APPROP. "MILITARY PERSONNEL, AIR FORCE"		USAFA & AVCADS	
			REIMBURSABLES	REIMBURSABLES								OFFICER	ENLISTED	OFFICER	ENLISTED
31 OCT 1982	584,626	584,626			584,626						584,626				
30 NOV 1982	586,314	586,314			586,314						586,314				
31 DEC 1982	587,467	587,467			587,467						587,467				



TABLE P26.0  
 DEPARTMENT OF DEFENSE  
 MILITARY PERSONNEL ON ACTIVE DUTY BY GRADE IN WHICH SERVING A/  
 DECEMBER 31, 1982

RANK/GRADE	TOTAL DOD	ARMY	NAVY	MARINE CORPS	AIR FORCE
GENERAL - ADMIRAL	32	11	8	2	11
LT GENERAL - VICE ADMIRAL	118	45	30	7	36
MAJ GENERAL - REAR ADMIRAL (U)	364	141	81	23	119
BRIG GENERAL - REAR ADMIRAL (L)	531	198	131	33	169
COLONEL - CAPTAIN	14,312	4,630	3,733	583	5,366
LIEUTENANT COL - COMMANDER	32,153	10,804	7,272	1,541	12,536
MAJOR - LT COMMANDER	50,376	16,175	12,714	3,051	18,436
CAPTAIN - LIEUTENANT	92,028	31,892	18,626	5,024	36,486
1ST LIEUTENANT - LIEUTENANT (JG)	46,630	15,338	10,351	4,395	16,546
2ND LIEUTENANT - ENSIGN	36,000	9,286	10,649	3,014	13,051
CHIEF WARRANT OFFICER W-4	2,126	1,516	482	128	-
CHIEF WARRANT OFFICER W-3	5,618	4,266	1,213	139	-
CHIEF WARRANT OFFICER W-2	7,330	5,538	1,258	534	-
WARRANT OFFICER W-1	4,075	3,311	-	764	-
TOTAL OFFICERS	291,693	103,151	66,548	19,238	102,756
E-9	13,666	4,074	3,500	1,257	4,835
E-8	36,159	14,891	8,101	3,543	9,624
E-7	121,434	48,250	29,227	8,812	35,145
E-6	216,400	82,546	64,639	14,771	54,444
E-5	338,266	118,039	89,081	26,994	104,152
E-4	418,390	182,605	98,984	31,998	104,803
E-3	379,988	114,728	99,389	46,338	119,533
E-2	133,148	41,007	43,179	24,882	24,080
E-1	150,162	64,893	43,666	17,882	23,721
TOTAL ENLISTED	1,807,613	671,033	479,766	176,477	480,337
CADETS & MIDSHIPMEN	13,303	4,396	4,533	-	4,374
GRAND TOTAL	2,112,609	778,580	550,847	195,715	567,467

A/ INCLUDES REIMBURSABLE ACTIVE DUTY  
 MILITARY PAY STRENGTHS

TABLE P26.02

DEPARTMENT OF DEFENSE  
 FEMALE MILITARY PERSONNEL ON ACTIVE DUTY BY GRADE IN WHICH SERVING A/  
 DECEMBER 31, 1982

RANK/GRADE	TOTAL DOD	ARMY	NAVY	MARINE CORPS	AIR FORCE
GENERAL - ADMIRAL	-	-	-	-	-
LT GENERAL - VICE ADMIRAL	-	-	-	-	-
MAJ GENERAL - REAR ADMIRAL (U)	-	-	-	-	-
BRIG GENERAL - REAR ADMIRAL (L)	6	2	2	-	2
COLONEL - CAPTAIN	253	84	87	5	77
LIEUTENANT COL - COMMANDER	940	291	281	30	338
MAJOR - LT COMMANDER	2,842	997	972	58	815
CAPTAIN - LIEUTENANT	9,880	3,643	2,135	136	3,966
1ST LIEUTENANT - LIEUTENANT (JG)	6,896	2,246	1,273	166	3,211
2ND LIEUTENANT - ENSIGN	4,701	1,648	1,066	155	1,832
CHIEF WARRANT OFFICER W-4	8	1	4	3	-
CHIEF WARRANT OFFICER W-3	16	7	5	4	-
CHIEF WARRANT OFFICER W-2	119	97	8	14	-
WARRANT OFFICER W-1	78	63	-	15	-
<b>TOTAL OFFICERS</b>	<b>25,739</b>	<b>9,079</b>	<b>5,833</b>	<b>586</b>	<b>10,241</b>
E-9	41	19	5	6	11
E-8	215	122	36	28	29
E-7	1,445	640	271	122	212
E-6	7,895	3,922	2,237	390	1,346
E-5	31,415	11,618	6,831	1,532	11,434
E-4	53,316	22,463	10,057	1,973	18,823
E-3	45,898	15,519	11,665	2,059	16,655
E-2	12,857	4,456	3,958	1,242	3,201
E-1	13,437	6,320	3,484	648	2,985
<b>TOTAL ENLISTED</b>	<b>166,519</b>	<b>65,279</b>	<b>38,544</b>	<b>8,000</b>	<b>54,696</b>
CADETS & MIDSHIPMEN	1,371	428	435	-	508
<b>GRAND TOTAL</b>	<b>193,629</b>	<b>74,786</b>	<b>44,812</b>	<b>8,586</b>	<b>65,445</b>

A/ INCLUDES REIMBURSABLE ACTIVE DUTY  
 MILITARY PAY STRENGTHS

TABLE P26.04

DEPARTMENT OF DEFENSE  
MILITARY PERSONNEL ON ACTIVE DUTY BY GRADE IN WHICH SERVING

REGULAR A/

DECEMBER 31, 1982

RANK/GRADE	TOTAL DOD	ARMY	NAVY	MARINE CORPS	AIR FORCE
GENERAL - ADMIRAL	32	11	8	2	11
LT GENERAL - VICE ADMIRAL	116	43	30	7	36
MAJ GENERAL - REAR ADMIRAL (U)	361	139	81	22	119
BRIG GENERAL - REAR ADMIRAL (L)	528	196	130	33	169
COLONEL - CAPTAIN	13,865	4,469	3,655	570	5,171
LIEUTENANT COL - COMMANDER	30,059	9,837	6,933	1,511	11,778
MAJOR - LT COMMANDER	43,812	13,195	11,540	3,003	16,074
CAPTAIN - LIEUTENANT	54,475	12,452	13,202	4,364	24,457
1ST LIEUTENANT - LIEUTENANT (JG)	16,053	6,824	5,240	2,237	1,752
2ND LIEUTENANT - ENSIGN	8,722	2,343	3,955	731	1,693
CHIEF WARRANT OFFICER W-4	1,738	1,140	470	128	-
CHIEF WARRANT OFFICER W-3	3,560	2,223	1,202	135	-
CHIEF WARRANT OFFICER W-2	2,595	828	1,233	534	-
WARRANT OFFICER W-1	771	7	-	764	-
TOTAL OFFICERS	176,687	53,707	47,679	14,041	61,260
E-9	13,606	4,073	3,452	1,248	4,833
E-8	36,021	14,884	8,011	3,514	9,612
E-7	120,940	48,235	28,825	8,752	35,128
E-6	215,580	82,540	63,933	14,669	54,418
E-5	335,493	118,029	86,653	26,714	104,097
E-4	411,934	182,588	92,555	31,959	104,732
E-3	365,612	114,700	85,152	46,287	119,473
E-2	123,024	40,979	33,140	24,832	24,073
E-1	138,713	64,696	32,656	17,829	23,532
TOTAL ENLISTED	1,760,923	670,724	434,477	175,824	479,898
REGULAR TOTAL	1,937,610	724,431	482,156	189,865	541,158

A/ REGULAR PLUS RETIRED REGULAR  
OFFICERS ON ACTIVE DUTY.

TABLE P26.05  
DEPARTMENT OF DEFENSE  
MILITARY PERSONNEL ON ACTIVE DUTY BY GRADE IN WHICH SERVING

RESERVE A/  
DECEMBER 31, 1982

RANK/GRADE	TOTAL DOD	ARMY	NAVY	MARINE CORPS	AIR FORCE
GENERAL - ADMIRAL	-	-	-	-	-
LT GENERAL - VICE ADMIRAL	2	2	-	-	-
MAJ GENERAL - REAR ADMIRAL (U)	3	2	-	1	-
BRIG GENERAL - REAR ADMIRAL (L)	3	2	1	-	-
COLONEL - CAPTAIN	447	161	78	13	195
LIEUTENANT COL - COMMANDER	2,094	967	339	30	758
MAJOR - LT COMMANDER	6,564	2,980	1,174	48	2,362
CAPTAIN - LIEUTENANT	37,553	19,440	5,424	660	12,029
1ST LIEUTENANT - LIEUTENANT (JG)	30,577	8,514	5,111	2,158	14,794
2ND LIEUTENANT - ENSIGN	27,278	6,943	6,694	2,283	11,358
CHIEF WARRANT OFFICER W-4	388	376	12	-	-
CHIEF WARRANT OFFICER W-3	2,058	2,043	11	4	-
CHIEF WARRANT OFFICER W-2	4,735	4,710	25	-	-
WARRANT OFFICER W-1	3,304	3,304	-	-	-
<b>TOTAL OFFICERS</b>	<b>115,006</b>	<b>49,444</b>	<b>18,859</b>	<b>5,197</b>	<b>41,496</b>
E-9	60	1	48	9	2
E-8	138	7	90	29	12
E-7	494	15	402	60	17
E-6	820	6	706	82	26
E-5	2,773	10	2,428	280	55
E-4	6,456	17	6,329	39	71
E-3	14,376	28	14,237	51	60
E-2	10,124	28	10,039	50	7
E-1	11,449	197	11,010	53	189
<b>TOTAL ENLISTED</b>	<b>46,690</b>	<b>309</b>	<b>45,289</b>	<b>653</b>	<b>439</b>
<b>RESERVE TOTAL</b>	<b>161,696</b>	<b>49,753</b>	<b>64,158</b>	<b>5,850</b>	<b>41,935</b>

A/ INCLUDES RESERVE, NATIONAL GUARD,  
AUS, AND AFUS OFFICERS ON ACTIVE  
DUTY.

TABLE P27.1  
 DEPARTMENT OF DEFENSE  
 SUMMARY OF ENLISTED PERSONNEL PROCUREMENT  
 FISCAL YEAR 1983

	CCT 1982	NOV 1982	DEC 1982	JAN 1983	FEB 1983	MAR 1983
TOTAL DEPARTMENT OF DEFENSE	56,164	45,760	41,504			
INDUCTIONS	-	-	-			
FIRST ENLISTMENTS	32,960	25,024	19,632			
IMMEDIATE REENLISTMENTS	16,229	16,620	18,590			
OTHER REENLISTMENTS	3,956	2,645	1,835			
RESERVES TO ACTIVE DUTY A/	3,019	1,471	1,447			
ARMY	22,106	15,912	13,273			
INDUCTIONS	-	-	-			
FIRST ENLISTMENTS	13,475	11,907	6,125			
IMMEDIATE REENLISTMENTS	6,921	6,589	6,584			
OTHER REENLISTMENTS	1,664	1,268	525			
RESERVES TO ACTIVE DUTY	46	148	39			
NAVY	16,657	9,509	10,697			
INDUCTIONS	-	-	-			
FIRST ENLISTMENTS	9,238	4,264	5,657			
IMMEDIATE REENLISTMENTS	3,188	3,270	3,091			
OTHER REENLISTMENTS	1,489	708	815			
RESERVES TO ACTIVE DUTY	2,742	1,267	1,334			
MARINE CORPS	7,049	5,246	4,875			
INDUCTIONS	-	-	-			
FIRST ENLISTMENTS	4,756	3,591	2,609			
IMMEDIATE REENLISTMENTS	1,757	1,290	1,991			
OTHER REENLISTMENTS	336	316	210			
RESERVES TO ACTIVE DUTY	200	49	65			
AIR FORCE	10,352	11,093	12,459			
INDUCTIONS	-	-	-			
FIRST ENLISTMENTS	5,491	5,262	5,241			
IMMEDIATE REENLISTMENTS	4,363	5,471	6,924			
OTHER REENLISTMENTS	467	353	285			
RESERVES TO ACTIVE DUTY	31	7	9			

A/ INCLUDES NATIONAL GUARD.

TABLE P27.21

DEPARTMENT OF DEFENSE  
ARMY ENLISTED PERSONNEL PROCUREMENT  
FISCAL YEAR 1983

	OCT 1982	NOV 1982	DEC 1982	JAN 1983	FEB 1983	MAR 1983
TOTAL	22,106	19,912	13,273			
REGULAR ENL. AND REENL. - TOTAL	22,060	19,764	13,234			
FIRST ENLISTMENTS	13,475	11,907	6,125			
REENLISTMENTS - TOTAL	8,585	7,857	7,109			
IMMEDIATE REENLISTMENTS	6,921	6,589	6,584			
FORMER REGULAR	6,921	6,588	6,584			
FORMER RESERVE & N.G.	-	1	-			
FORMER INDUCTEE	-	-	-			
REENL. OTHER THAN IMMEDIATE	1,664	1,268	525			
WITHIN 2-90 DAYS AFTER SEPARATION	164	94	48			
FORMER REGULAR	7	9	8			
FORMER RESERVE & N.G.	141	78	35			
FORMER INDUCTEE	8	5	2			
FORMER OFFICER	8	2	3			
OVER 90 DAYS AFTER SEPARATION	1,500	1,174	477			
INDUCTIONS	-	-	-			
RESERVES AND N.G. CALLS	46	148	39			

TABLE P27.22

DEPARTMENT OF DEFENSE  
NAVY ENLISTED PERSONNEL PROCUREMENT  
FISCAL YEAR 1983

	OCT 1982	NOV 1982	DEC 1982	JAN 1983	FEB 1983	MAR 1983
TOTAL	16,657	9,509	10,897			
REGULAR ENL. AND REENL. - TOTAL	13,915	8,242	9,563			
FIRST ENLISTMENTS	9,238	4,264	5,657			
REENLISTMENTS - TOTAL	4,677	3,979	3,906			
IMMEDIATE REENLISTMENTS	3,180	3,270	3,091			
FORMER REGULAR FORMER RESERVE	3,093 35	3,075 195	2,837 254			
REENL. OTHER THAN IMMEDIATE	1,489	708	815			
WITHIN 2-90 DAYS AFTER SEPARATION	311	126	138			
FORMER REGULAR FORMER RESERVE	311	126	138			
OVER 90 DAYS AFTER SEPARATION	1,178	582	677			
INDUCTIONS	-	-	-			
RESERVES TO ACTIVE DUTY	2,742	1,267	1,334			
FIRST ENLISTMENTS REENLISTMENTS REPORTED TO ACTIVE DUTY	- 179 2,563	- 95 1,172	- 148 1,186			

TABLE P27 23

DEPARTMENT OF DEFENSE  
MARINE CORPS ENLISTED PERSONNEL PROCUREMENT  
FISCAL YEAR 1983

	OCT 1982	NOV 1982	DEC 1982	JAN 1983	FEB 1983	MAR 1983
TOTAL	7,049	5,246	4,875			
REGULAR ENL. AND REENL. - TOTAL	6,849	5,197	4,810			
FIRST ENLISTMENTS	4,756	3,591	2,609			
REENLISTMENTS - TOTAL	2,093	1,606	2,201			
IMMEDIATE REENLISTMENTS	1,757	1,290	1,991			
FORMER REGULAR A/	1,708	1,262	1,961			
FORMER RESERVE	49	28	30			
FORMER INDUCTEE	-	-	-			
REENL. OTHER THAN IMMEDIATE	336	316	210			
WITHIN 2-90 DAYS AFTER SEPARATION	50	33	28			
FORMER REGULAR	45	31	24			
FORMER RESERVE	-	2	4			
FORMER INDUCTEE	5	-	-			
OVER 90 DAYS AFTER SEPARATION B/	286	283	182			
INDUCTIONS	-	-	-			
RESERVES TO ACTIVE DUTY	200	19	65			
FIRST ENLISTMENTS	-	-	-			
REENLISTMENTS	1	1	-			
REPORTED TO ACTIVE DUTY	199	48	65			

A/ INCLUDES EXTENSIONS FOR WHICH REENLISTMENT BONUS IS PAID  
B/ INCLUDES ENLISTMENTS OF FORMER OFFICERS.

TABLE P27.24

DEPARTMENT OF DEFENSE  
AIR FORCE ENLISTED PERSONNEL PROCUREMENT  
FISCAL YEAR 1983

	OCT 1982	NOV 1982	DEC 1982	JAN 1983	FEB 1983	MAR 1983
TOTAL	10,352	11,093	12,459			
REGULAR ENL. AND REENL. - TOTAL	10,321	11,086	12,450			
FIRST ENLISTMENTS	5,491	5,262	5,241			
REENLISTMENTS - TOTAL	4,830	5,824	7,209			
IMMEDIATE REENLISTMENTS	4,363	5,471	6,924			
FORMER REGULAR FORMER RESERVE & N.G.	4,359	5,471	6,923			1
REENL. OTHER THAN IMMEDIATE	467	353	285			
WITHIN 2-90 DAYS AFTER SEPARATION	-	-	-			
FORMER REGULAR FORMER RESERVE & N.G.	-	-	-			
OVER 90 DAYS AFTER SEPARATION A/	467	353	285			
INDUCTIONS	-	-	-			
RESERVES & N.G. TO ACTIVE DUTY	31	7	9			

A/ INCLUDES ENLISTMENTS OF FORMER COMMISSIONED AND WARRANT OFFICERS.

TABLE P29.20-29.34  
 DEPARTMENT OF DEFENSE  
 REENLISTMENT RATES BY SERVICE

	A/ "UNADJUSTED" REENLISTMENT RATES FOR FIRST-TERM REGULARS				B/ "ADJUSTED" REENLISTMENT RATES FOR FIRST-TERM REGULARS					
	TOTAL DOD	ARMY	NAVY	MARINE CORPS	AIR FORCE	TOTAL DOD	ARMY	NAVY	MARINE CORPS	AIR FORCE
<b>FY 1979</b>										
ELIGIBLES	171,034	62,909	45,204	21,029	41,892	159,388	59,604	44,308	20,925	35,151
REENLISTMENTS	64,001	27,027	16,949	4,107	13,918	54,369	23,714	17,080	4,010	9,565
REENLISTMENT RATE	37.4%	43.0%	37.5%	19.5%	38.0%	34.0%	39.8%	38.5%	19.2%	27.2%
<b>FY 1980</b>										
ELIGIBLES	165,525	50,288	53,670	19,364	42,203	161,232	52,231	51,976	19,575	37,450
REENLISTMENTS	64,762	25,434	19,721	4,493	15,114	61,610	27,370	19,138	4,672	10,430
REENLISTMENT RATE	39.1%	50.6%	36.7%	23.2%	35.6%	38.2%	52.4%	36.8%	23.9%	27.9%
<b>FY 1991</b>										
ELIGIBLES	161,600	36,762	55,107	23,875	43,856	158,676	43,013	53,583	24,120	37,960
REENLISTMENTS	69,435	21,312	22,968	6,340	18,815	67,709	25,563	22,521	6,630	12,995
REENLISTMENT RATE	43.0%	55.0%	41.7%	26.6%	42.9%	42.7%	59.4%	42.0%	27.5%	34.2%
<b>FY 1983 (3 MOS)</b>										
ELIGIBLES	27,487	2,798	9,970	4,891	9,828	23,758	2,408	10,406	4,514	6,430
REENLISTMENTS	15,402	1,265	5,355	1,986	6,796	11,533	875	5,653	1,589	3,416
REENLISTMENT RATE	56.0%	45.2%	53.7%	40.6%	69.1%	48.5%	36.3%	54.3%	35.2%	53.1%

TABLE P-29. 20-29. 34

DEPARTMENT OF DEFENSE  
REENLISTMENT RATES BY SERVICE

	A/ "UNADJUSTED" REENLISTMENT RATES FOR CAREER REGULARS				B/ "ADJUSTED" REENLISTMENT RATES FOR CAREER REGULARS					
	TOTAL DOD	ARMY	NAVY	MARINE CORPS	AIR FORCE	TOTAL DOD	ARMY	NAVY	MARINE CORPS	AIR FORCE
<b>FY 1979</b>										
ELIGIBLES	171,998	81,940	29,614	15,987	44,457	162,691	75,320	29,290	15,743	42,338
REENLISTMENTS	117,337	54,416	18,418	8,291	36,212	108,625	47,791	18,408	8,037	34,389
REENLISTMENT RATE	68.2%	66.4%	62.2%	51.9%	81.5%	66.8%	63.5%	62.8%	51.1%	81.2%
<b>FY 1980</b>										
ELIGIBLES	177,900	82,722	32,581	15,668	46,929	173,720	84,430	31,605	15,353	42,272
REENLISTMENTS	125,498	57,359	21,835	7,895	38,409	121,884	59,124	21,362	7,565	33,833
REENLISTMENT RATE	70.5%	69.3%	67.0%	50.4%	81.8%	70.2%	70.0%	67.6%	49.3%	80.0%
<b>FY 1981</b>										
ELIGIBLES	172,448	77,981	39,196	5,578	45,693	173,303	88,944	36,879	4,950	42,530
REENLISTMENTS	132,092	56,580	28,551	4,177	42,784	133,278	67,542	26,518	3,552	35,666
REENLISTMENT RATE	76.6%	72.6%	72.8%	74.9%	86.1%	76.9%	75.9%	71.9%	71.8%	83.9%
<b>FY 1983 (3 MOS)</b>										
ELIGIBLES	30,486	7,156	8,622	3,967	10,741	26,786	7,079	9,482	3,015	7,210
REENLISTMENTS	25,546	5,347	7,088	3,149	9,962	21,896	5,270	7,986	2,199	6,441
REENLISTMENT RATE	83.8%	74.7%	82.2%	79.4%	92.7%	81.7%	74.4%	84.2%	72.9%	89.3%

A/ "UNADJUSTED REENLISTMENT RATE" - THE RATIO OF TOTAL REENLISTMENTS OCCURRING IN A GIVEN PERIOD TO TOTAL SEPARATIONS ELIGIBLE TO REENLIST IN THE SAME PERIOD, EXPRESSED AS A PERCENTAGE.

B/ "ADJUSTED REENLISTMENT RATE" - THE "UNADJUSTED" RATE ADJUSTED TO EXCLUDE THE EFFECTS OF: (1) EARLY SEPARATIONS FOR IMMEDIATE REENLISTMENTS AND (2) OTHER EARLY DISCHARGES OF ELIGIBLES UNDER EARLY RELEASE PROGRAMS.

TABLE P29.20-29.34

DEPARTMENT OF DEFENSE  
REENLISTMENT RATES BY SERVICE

	A/ "UNADJUSTED" REENLISTMENT RATES FOR TOTAL REGULARS				B/ "ADJUSTED" REENLISTMENT RATES FOR TOTAL REGULARS				REENLISTMENT RATE ARMY INDUCTEES			
	TOTAL DOD	ARMY	NAVY	MARINE CORPS	AIR FORCE	TOTAL DOD	ARMY	NAVY	MARINE CORPS	AIR FORCE	UN- ADJUSTED	AD- JUSTED
<b>FY 1979</b>												
ELIGIBLES	343,032	144,849	74,818	37,016	86,349	322,679	134,924	73,398	36,668	77,489	-	-
REENLISTMENTS	181,338	81,443	35,357	12,396	52,130	162,994	71,505	35,498	12,047	43,954	-	-
REENLISTMENT RATE	52.9%	56.2%	47.3%	33.5%	60.4%	50.5%	53.0%	48.2%	32.9%	56.7%	-	-
<b>FY 1980</b>												
ELIGIBLES	343,425	133,010	86,251	35,032	89,192	334,952	136,721	83,581	34,928	79,722	-	-
REENLISTMENTS	190,260	82,793	41,556	12,386	53,523	183,494	86,494	40,500	12,237	44,263	-	-
REENLISTMENT RATE	55.4%	62.2%	48.2%	35.4%	60.0%	54.8%	63.3%	48.5%	35.0%	55.5%	-	-
<b>FY 1981</b>												
ELIGIBLES	334,048	116,743	94,303	29,453	93,549	331,979	131,957	90,462	29,070	80,490	-	-
REENLISTMENTS	201,527	77,892	51,519	10,517	61,599	200,987	33,105	49,039	10,182	48,661	-	-
REENLISTMENT RATE	60.3%	66.7%	54.6%	35.7%	65.8%	60.5%	70.6%	54.2%	35.0%	60.5%	-	-
<b>FY 1983 (3 MOS)</b>												
ELIGIBLES	57,973	9,954	18,592	8,856	20,569	50,544	9,487	19,888	7,529	13,640	-	-
REENLISTMENTS	40,948	5,612	12,443	5,135	16,758	33,429	6,145	13,639	3,788	9,857	-	-
REENLISTMENT RATE	70.6%	66.4%	66.9%	58.0%	81.5%	66.1%	64.8%	68.6%	50.3%	72.3%	-	-

DEPARTMENT OF DEFENSE  
ACTIVE DUTY MILITARY PERSONNEL STRENGTHS BY REGIONAL AREA AND BY COUNTRY

DECEMBER 31, 1982

REGIONAL AREA/COUNTRY	TOTAL	ARMY	AIR FORCE	NAVY	MARINE CORPS
TOTAL OVERSEASIDE	2,112,604	778,580	587,467	550,847	195,715
ASHORE	1,843,486	778,580	587,467	328,866	188,553
AFLAOT	229,118	0	0	221,981	7,137
U.S. TERRITORY AND SPECIAL LOCATIONS:					
CONTINENTAL UNITED STATES (CONUS)	1,618,981	514,631	468,886	466,452	161,011
ALASKA	1,280,139	462,285	423,442	252,343	141,629
HAWAII	20,860	4,022	10,473	1,108	187
GUAM	45,224	17,381	6,302	12,006	9,576
	3,026	34	4,040	4,571	361
JOHNSON ATOLL	155	127	8	0	0
MIDWAY ISLANDS	1	0	1	0	0
PURTO RICO	3,774	436	44	2,799	495
TRUST TERRITORY OF THE PACIFIC ISLANDS	38	32	1	5	0
VIRGINIA ISLANDS OF THE U.S.	4	8	0	1	0
WAKE ISLAND	6	0	6	0	0
TRANSIENTS	49,254	30,276	23,769	22,782	8,131
AFLAOT	171,554	0	0	170,722	632
TOTAL FOREIGN COUNTRIES	497,628	239,749	118,581	84,394	34,704
ASHORE	439,839	259,949	118,581	33,135	28,174
AFLAOT	57,789	0	0	51,259	6,530
(1) WESTERN & SOUTHERN EUROPE	339,727	219,772	81,671	36,749	1,535
AUSTRIA	35	5	2	0	26
BELGIUM	2,239	1,445	650	112	32
CYPRUS	13	2	1	0	10
DENMARK	55	5	18	18	14
FINLAND	19	5	2	2	10
FRANCE	94	42	11	8	33
GERMANY (FED. REPUBLIC & WEST BERLIN)	249,196	210,832	37,995	286	83
GIBRALTAR	1	0	0	1	0
GREECE	5,480	596	2,446	423	15
GREENLAND	314	0	314	0	0
ICELAND	2,439	2	1,087	1,747	101
IRELAND	4	3	0	0	1
ITALY	12,981	4,464	4,202	4,010	281
LUXEMBOURG	6	3	0	0	3
MALTA	5	2	0	0	0
NETHERLANDS	2,456	774	1,776	15	1
NORWAY	136	57	11	27	19
PORTUGAL	1,000	65	1,034	364	13
SPAIN	8,711	13	4,877	3,720	194

TABLE 1000A  
 DEPARTMENT OF DEFENSE  
 ACTIVE DUTY MILITARY PERSONNEL STRENGTHS BY REGIONAL AREA AND BY COUNTRY  
 DECEMBER 31, 1962

REGIONAL AREA/COUNTRY	TOTAL	ARMY	AIR FORCE	NAVY	MARINE CORPS
SWEDEN	16	1	6	2	7
SWITZERLAND	51	5	5	0	25
TURKEY*	5,140	1,269	3,774	78	13
UNITED KINGDOM*	26,124	142	25,515	2,261	356
AFGANI	25,446	0	0	25,653	293
(EUROPEAN NATO)	315,658	219,740	81,657	13,091	1,160
(2) EAST ASIA & PACIFIC	125,861	51,533	59,147	29,585	28,406
AUSTRALIA	679	4	266	395	4
BURMA	11	3	2	0	6
CHINA	14	4	2	2	10
HONG KONG	41	13	4	14	10
INDONESIA	44	10	12	11	11
JAPAN (INCLUDING OKINAWA)	47,714	2,440	14,598	8,441	24,035
MALAYSIA	14	7	2	0	7
NEW ZEALAND	67	2	10	43	6
PHILIPPINES	14,417	44	8,973	4,647	753
REPUBLIC OF KOREA	40,133	24,732	10,445	337	619
SINGAPORE	26	7	2	9	8
THAILAND	104	52	51	9	12
AFLOAT	18,191	0	0	15,271	2,920
(3) AFRICA, MIDDLE EAST AND SOUTH ASIA	17,358	1,612	590	12,908	2,248
AFGHANISTAN	6	0	0	0	6
ALGERIA	4	2	0	0	6
BAHRAIN	78	2	0	76	0
BANGLADESH	4	2	0	0	6
BRITISH INDIAN OCEAN TERRITORY (INCLUDES DIEGO GARCIA)	1,101	0	11	1,070	0
CAMEROON	4	2	0	0	6
CONGO	7	1	0	0	6
EGYPT	1,430	1,154	190	27	25
ETHIOPIA	7	0	0	0	7
GABON	6	0	0	0	6
GHANA	12	4	0	0	4
INDIA	52	5	4	4	13
ISRAEL	75	24	15	0	23
IVORY COAST	11	4	0	0	7
JORDAN	53	21	6	0	7
KENYA	52	17	4	1	10
KUWAIT	21	14	1	1	6

TABLE P309A

DEPARTMENT OF DEFENSE  
ACTIVE DUTY MILITARY PERSONNEL STRENGTHS BY REGIONAL AREA AND BY COUNTRY

DECEMBER 31, 1982

REGIONAL AREA/COUNTRY	TOTAL	ARMY	AIR FORCE	NAVY	MARINE CORPS
LEHANGN	78	6	0	1	71
LIBERIA	24	12	2	3	7
MADAGASCAR	8	0	0	2	6
MALAWI	1	1	0	0	0
MALI	6	0	0	0	6
MAURITIUS	6	0	0	0	6
MOROCCO	49	20	9	3	17
NEPAL	9	3	0	0	6
NIGER	6	0	0	0	6
NIGERIA	26	10	3	0	13
OMAN	7	3	3	1	0
PAKISTAN	28	6	6	1	15
ST. HELENA (INCLUDES ASCENSION ISLAND)	1	0	1	0	0
SAUDI ARABIA	703	238	399	53	13
SENEGAL	11	0	0	2	9
SEYCHELLES	4	0	4	0	0
SOMALIA	19	12	1	0	6
SOUTH AFRICA	21	2	5	2	12
SRI LANKA	9	0	0	3	6
SUDAN	22	9	4	0	9
SYRIA	12	3	0	0	9
TANZANIA, UNITED REPUBLIC OF	4	0	0	0	4
TUNISIA	25	14	1	1	9
UNITED ARAB EMIRATES	2	0	2	0	0
UPPER VOLTA	6	0	0	0	6
YEMEN (SANA'A)	18	8	4	0	6
ZAIRE	23	9	5	0	9
ZAMBIA	6	0	0	0	6
ZIMBABWE	6	0	0	0	6
AFLOAT	13,459	0	0	11,631	1,828
(4) WESTERN HEMISPHERE	16,356	7,118	2,103	4,717	2,418
ANTIGUA	116	0	1	115	0
ARGENTINA	22	4	8	1	9
BAHAMAS, THE	43	0	6	31	6
BARBADOS	7	0	0	1	6
BELIZE	1	1	0	0	0
BERMUDA	1,416	0	0	1,328	88
BOLIVIA	12	3	2	0	7
BRAZIL	51	10	8	7	26

## TABLE P109A

DEPARTMENT OF DEFENSE  
ACTIVE DUTY MILITARY PERSONNEL STRENGTHS BY REGIONAL AREA AND BY COUNTRY

BY COUNTRY 31, 1982

REGIONAL AREA/COUNTRY	TOTAL	ARMY	AIR FORCE	NAVY	MARINE CORPS
CANADA	534	13	203	407	11
CHILE	16	3	1	1	11
COLOMBIA	26	5	4	3	14
COSTA RICA	11	2	0	0	9
CUBA (GUANTANAMO)	2,195	0	0	1,739	456
DOMINICAN REPUBLIC	18	4	2	3	9
ECUADOR	25	6	7	3	9
EL SALVADOR	52	31	1	1	19
GUATEMALA	25	5	1	0	17
GUYANA	6	0	0	0	6
HAITI	11	2	1	0	8
HONDURAS	30	8	12	1	9
JAMAICA	12	1	0	1	10
MEXICO	29	9	6	2	12
NICARAGUA	13	5	0	0	8
PANAMA	9,986	6,986	1,921	357	1,989
PARAGUAY	13	3	1	1	7
PERU	24	6	6	4	8
SURINAME	2	2	0	0	0
TURKS AND CAICOS ISLANDS	1	0	1	0	0
URUGUAY	14	5	1	1	7
VENEZUELA	24	4	10	6	9
AFL0AT	2,193	0	0	704	1,489
(5) ANTARCTICA	67	0	0	67	0
(6) EASTERN EUROPE	183	63	19	4	97
BULGARIA	10	2	2	0	6
CZECHOSLOVAKIA	12	1	4	0	7
GERMAN DEMOCRATIC REPUBLIC	45	34	0	0	7
HUNGARY	12	4	1	0	7
POLAND	16	3	1	0	12
ROMANIA	15	4	1	0	10
UNION OF SOVIET SOCIALIST REPUBLICS	57	7	8	3	39
YUGOSLAVIA	16	4	2	1	9
(7) UNDISFRUITED	476	61	51	364	0

NOTE: A-SHORE INCLUDES TEMPORARILY SHORT-BASED.

**Section 2**

**RESERVE MILITARY MANPOWER STATISTICS**

TABLE R11.0  
 DEPARTMENT OF DEFENSE  
 RESERVE COMPONENT STRENGTH SUMMARY  
 DECEMBER 31, 1982

TYPE OF DUTY	RESERVES BY RESERVE CATEGORY		
	TOTAL	OFFICER	ENLISTED A/
TOTAL	2,269,969	696,301	1,573,668
READY RESERVE NOT ON ACTIVE DUTY	1,381,423	219,158	1,162,265
ACTIVE STATUS	1,372,544	218,554	1,153,990
INACTIVE STATUS B/	8,879	604	8,275
STANDBY RESERVE	49,175	46,717	2,458
ON ACTIVE STATUS	7,678	5,612	2,066
INACTIVE STATUS	41,497	41,105	392
RETIRED - RETIRED STATUS	839,371	430,426	408,945

A/ INCLUDES OFFICER CANDIDATES.

B/ INACTIVE NATIONAL GUARD AND REP'S IN NON-PAY STATUS.

SELECTED RESERVE	RESERVES IN "PAID STATUS"		
	PAY GROUP	TOTAL	OFFICER ENLISTED
A, B, C, F, P, T, O	981,711	137,931	843,780
U, AGR*			

\* FULL-TIME ACTIVE DUTY SUPPORT PERSONNEL

TABLE R12.0

DEPARTMENT OF DEFENSE  
RESERVE STRENGTH - OFFICER AND ENLISTED  
NOT ON ACTIVE DUTY

DATE	TOTAL	OFFICERS	ENLISTED A/
31 OCT 1982	2,262,518	695,033	1,567,485
30 NOV 1982	2,264,041	695,669	1,568,372
31 DEC 1982	2,269,969	696,301	1,573,668

A/ INCLUDES OFFICER CANDIDATES.

TABLE R13 0  
 DEPARTMENT OF DEFENSE  
 READY RESERVE AND ACTIVE DUTY STRENGTH COMPARED TO STATUTORY LIMITATION  
 DECEMBER 31, 1982

	TOTAL	ON ACTIVE DUTY	NOT ON ACTIVE DUTY
STATUTORY READY RESERVE LIMITATION A/	2,900,000		
DIFFERENCE	1,339,071		
READY RESERVE AND ACTIVE DUTY STRENGTH	1,560,929	161,680	1,399,249
COAST GUARD RESERVE	18,454	628	17,826
DOD RESERVE	1,542,475	161,052	1,381,423
ARMY	951,639	49,753	901,886
NATIONAL GUARD B/	422,248	509	421,739
ARMY RESERVE	529,391	49,244	480,147
NAVAL RESERVE	251,284	64,158	187,126
MARINE CORPS RESERVE	91,052	5,206	85,846
AIR FORCE	248,500	41,935	206,565
AIR NATIONAL GUARD C/	101,571	249	101,322
AIR FORCE RESERVE	146,929	41,686	105,243

A/ SECTION 205(B), ARMED FORCES RESERVE ACT OF 1952, AS AMENDED.  
 B/ INCLUDES "INACTIVE NATIONAL GUARD" NUMBERING 8,879 AND REP'S NUMBERING 1,539.  
 C/ INCLUDES REP'S IN A NON-PAY STATUS NUMBERING 148.

TABLE R14.0

DEPARTMENT OF DEFENSE  
RESERVE COMPONENT PERSONNEL BY RESERVE CATEGORY  
NOT ON ACTIVE DUTY

DATE	TOTAL	READY	STANDBY	RETIRED
31 OCT 1982	2,262,518	1,372,075	51,587	838,856
30 NOV 1982	2,264,041	1,373,379	51,152	839,510
31 DEC 1982	2,269,969	1,381,423	49,175	839,371

TABLE R14.0

DEPARTMENT OF DEFENSE  
RESERVE COMPONENT PERSONNEL BY RESERVE CATEGORY  
NOT ON ACTIVE DUTY

OFFICERS

DATE	TOTAL	READY	STANDBY	RETIRED
31 OCT 1982	695,033	217,572	47,335	430,126
30 NOV 1982	695,669	217,692	47,001	430,976
31 DEC 1982	696,301	219,158	46,717	430,426

TABLE R14.0

DEPARTMENT OF DEFENSE  
RESERVE COMPONENT PERSONNEL BY RESERVE CATEGORY  
NOT ON ACTIVE DUTY

ENLISTED A/

DATE	TOTAL	READY	STANDBY	RETIRED
31 OCT 1982	1,567,485	1,154,503	4,252	408,730
30 NOV 1982	1,568,372	1,155,687	4,151	408,534
31 DEC 1982	1,573,668	1,162,265	2,458	408,945

A/ INCLUDES OFFICER CANDIDATES.

TABLE R21.0

DEPARTMENT OF DEFENSE  
RESERVE PERSONNEL ON ACTIVE DUTY BY COMPONENT

DECEMBER 31, 1982

COMPONENT/PERSONNEL	TOTAL	OFFICER	ENLISTED A/
TOTAL DEPARTMENT OF DEFENSE	161,052	115,006	46,046
ARMY - TOTAL	49,753	49,444	309
NATIONAL GUARD OF THE U. S.	509	452	57
ARMY RESERVE	49,244	48,992	252
NAVAL RESERVE	64,158	18,869	45,289
MARINE CORPS RESERVE	5,206	5,197	9
AIR FORCE - TOTAL	41,935	41,496	439
AIR NATIONAL GUARD OF THE U. S.	249	200	49
AIR FORCE RESERVE	41,686	41,296	390

A/ INCLUDES OFFICER CANDIDATES.

TABLE R22.0

DEPARTMENT OF DEFENSE  
RESERVE STRENGTH ON ACTIVE DUTY A/

DATE	TOTAL DOD	ARMY			NAVAL RESERVE	MARINE CORPS RESERVE	AIR FORCE	
		NATIONAL GUARD	ARMY RESERVE	AIR NATIONAL GUARD			AIR FORCE RESERVE	
31 OCT 1982	161,295	498	49,281	63,936	6,065	252	41,263	
30 NOV 1982	161,956	520	49,484	64,061	5,989	254	41,648	
31 DEC 1982	161,052	509	49,244	64,158	5,206	249	41,686	

A/ CONTINUOUS OR EXTENDED ACTIVE DUTY  
EXCLUDES ACTIVE DUTY FOR RESERVE TRAINING

TABLE R23.0

DEPARTMENT OF DEFENSE  
RESERVE PERSONNEL BY COMPONENT AND CATEGORY  
NOT ON ACTIVE DUTY

DECEMBER 31, 1982

COMPONENT/ PERSONNEL	TOTAL	NAT'L GUARD OF THE U.S. A/	ARMY RESERVE	NAVAL RESERVE	MARINE CORPS RESERVE	AIR B/ NAT'L GUARD OF THE U.S.	AIR FORCE RESERVE
TOTAL	2,269,969	421,739	946,857	336,706	94,855	101,322	368,490
OFFICER	696,301	41,011	300,538	167,407	12,909	12,600	161,836
ENLISTED C/	1,573,668	380,728	646,319	169,299	81,946	88,722	206,654
READY RESERVE	1,381,423	421,739	480,147	187,126	85,846	101,322	105,243
OFFICER	219,158	41,011	93,636	42,446	6,535	12,600	22,930
ENLISTED C/	1,162,265	380,728	386,511	144,680	79,311	88,722	82,313
STANDBY RESERVE	49,175	-	298	17,476	1,387	-	30,014
OFFICER	46,717	-	214	16,380	1,288	-	28,835
ENLISTED	2,458	-	84	1,096	99	-	1,179
ACTIVE STATUS	7,678	-	190	1,111	602	-	5,575
OFFICER	5,612	-	106	89	704	-	4,713
ENLISTED	2,066	-	84	1,022	98	-	862
INACTIVE STATUS	41,497	-	108	16,365	585	-	24,439
OFFICER	41,105	-	108	16,291	584	-	24,122
ENLISTED	392	-	-	74	1	-	317
RETIRED RESERVE	839,371	-	466,412	132,104	7,622	-	233,233
OFFICER	430,426	-	206,688	108,581	5,086	-	110,071
ENLISTED	408,945	-	259,724	23,523	2,536	-	123,162

A/ INCLUDES "INACTIVE NATIONAL GUARD" NUMBERING 8,879 TOTAL, 604 OFFICERS, 8,275 ENLISTED  
AND RESERVE ENLISTMENT PROGRAM (REPS) IN A NON-PAY STATUS NUMBERING 1,539.

B/ INCLUDES REPS IN A NON-PAY STATUS NUMBERING 148.

C/ INCLUDES OFFICER CANDIDATES.

TABLE R24.0

DEPARTMENT OF DEFENSE  
RESERVE STRENGTH NOT ON ACTIVE DUTY A/

DATE	TOTAL DOD	ARMY				AIR FORCE		
		B/ NATIONAL GUARD	ARMY RESERVE	NAVAL RESERVE	MARINE CORPS RESERVE	AIR NATIONAL GUARD	AIR FORCE RESERVE	
31 OCT 1982	2,262,518	419,717	948,150	325,527	94,741	100,718	373,665	
30 NOV 1982	2,264,041	420,641	950,009	325,839	94,692	100,765	372,075	
31 DEC 1982	2,269,969	421,739	946,857	336,706	94,855	101,322	368,490	

A/ INCLUDES RESERVES ON ACTIVE DUTY  
FOR RESERVE TRAINING PURPOSES.  
B/ INCLUDES "INACTIVE" NATIONAL GUARD.

TABLE R26.5

DEPARTMENT OF DEFENSE  
SELECTED RESERVE STRENGTH A/

COMPONENT/ PERSONNEL	OCT 1982	NOV 1982	DEC 1982	JAN 1983	FEB 1983	MAR 1983
TOTAL DOD OFFICERS	963,233	965,154	981,711			
ENLISTED	135,452	135,693	137,931			
	827,781	829,461	843,780			
ARMY NATIONAL GUARD OFFICERS	409,019	410,070	411,321			
ENLISTED	40,312	40,442	40,407			
	368,707	369,628	370,914			
ARMY RESERVE OFFICERS	255,740	255,480	257,356			
ENLISTED	48,007	48,053	48,224			
	207,733	207,427	209,132			
NAVAL RESERVE OFFICERS	93,721	94,762	107,665			
ENLISTED	17,933	18,116	19,724			
	75,788	76,646	87,941			
MARINE CORPS RESERVE OFFICERS	40,230	40,331	40,502			
ENLISTED	2,916	2,942	2,973			
	37,314	37,389	37,529			
AIR NATIONAL GUARD OFFICERS	100,550	100,590	101,104			
ENLISTED	12,370	12,186	12,594			
	88,180	88,402	88,510			
AIR FORCE RESERVE OFFICERS	63,973	63,921	63,763			
ENLISTED	13,914	13,952	14,009			
	50,059	49,969	49,754			

A/ INCLUDES PAY GROUPS A, B, C, F, P, T, Q, U, AGR (FULL-TIME ACTIVE DUTY SUPPORT PERSONNEL)

## G L O S S A R Y   O F   T E R M S

Active Duty. Full-time duty in the active service of a uniformed service, including duty on the active list, full-time training duty, annual training duty, and attendance while in the active service, at a school designated as a service school by law or by the Secretary concerned.

Actual Strength. The number of personnel in, or projected to be in, an organization or account at a specified point in time.

Armed Forces of the United States. Includes the Army, Navy, Air Force, Marine Corps, and Coast Guard, and all components thereof.

Assigned Strength. Actual strength of an entire service, not necessarily equal to combined unit actual strengths since individuals may be assigned but not joined.

Authorized Strength. The total strength authorized by Congress (for internal Service applications only). Authorized strength may be used synonymously with documented strength as defined below.

Cadet or Midshipman Enrolled in the Reserve Officers Training Corps (ROTC) Program. A member of the Senior Reserve Officer Training Corps (SROTC) under 10 U.S.C. 2107 for tuition, fees, books, and laboratory expenses.

Continental United States. Unless otherwise qualified, means the 48 contiguous States and the District of Columbia.

Enlisted Member. A person enlisted, enrolled, or conscripted into the military service.

Enlistment. (1) A voluntary entrance into military service under enlisted status, as distinguished from induction through Selective Service.

(2) A period of time, contractual or prescribed by law, which enlisted members serve between enrollment and discharge.

Officer. A commissioned or warrant officer.

Reserve Components. The Army National Guard of the United States, Army Reserve, Naval Reserve, Marine Corps Reserve, Air National Guard of the United States, Air Force Reserve, Coast Guard Reserve, and the Reserve Corps of the Public Health Service.

Service Academy Cadet or Midshipman. A person in training at one of the service academies to become a commissioned officer.

Transients. All military members who are not available for duty while executing permanent change of station (PCS) orders. Transients shall comprise all military personnel in a travel, proceed, leave enroute, or temporary duty enroute status on PCS orders to execute an accession, separation, training, operational, or rotational move.

Warrant Officer. A person who holds a commission or warrant in a warrant officer grade.

**ND**