

AD-A153 309

MILITARY MANPOWER STATISTICS, MARCH, FY-83. (U)
WASHINGTON HEADQUARTERS SERVICE (DOD) DIR FOR INFO
OP & RPTS. MAR 83. D10R/M03-83/06

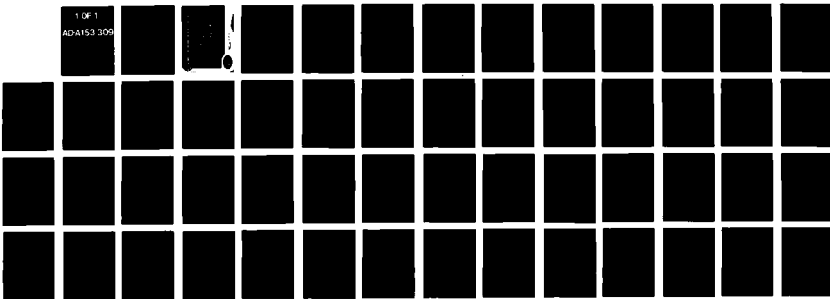
11

UNCLASSIFIED

F/G 5/9

N/L

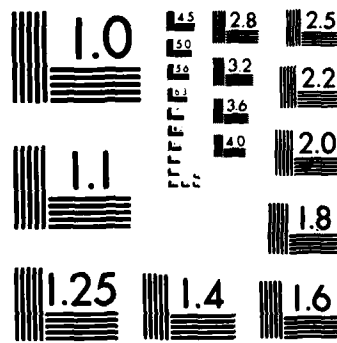
1 OF 1
AD-A153 309



END
FILMED
1104 85

1 OF 1

AD-A153 309



MICROCOPY RESOLUTION TEST CHART
NATIONAL BUREAU OF STANDARDS-1963-A

**THIS REPORT IS UNCLASSIFIED AND
ITS DISTRIBUTION IS UNLIMITED**



Department of Defense
MILITARY MANPOWER STATISTICS

MARCH 1983



Department of Defense

Military Manpower Statistics

March 1983

Issued Monthly by

Washington Headquarters Services
Directorate for Information
Operations and Reports

FOREWORD

Military Manpower Statistics (MMS) is a monthly publication prepared by the Washington Headquarters Services, Directorate for Information Operations and Reports (WHS/DIOR) of the Office of the Secretary of Defense.

The MMS report presents audited statistical data pertaining to military personnel on active duty and personnel in military reserve components, for the current fiscal year on a monthly basis. The March, June, September, and December issues contain quarterly summaries of certain military manpower data as annotated in the Table of Contents. Although these tables are revised quarterly, they are published without changes in two subsequent monthly editions of this publication. The publication is generated from a computerized data base developed and maintained by the Manpower Management Information Division of WHS/DIOR.

The report is approved for public release at cost: distribution unlimited. However, all requests for this publication and DOD-wide data contained therein should be referred to WHS/DIOR or cognizant offices in the Office of the Secretary of Defense. Questions concerning the material in this publication, and requests for additional copies, should be addressed to the Director for Information Operations and Reports, WHS, Room 1C535, The Pentagon, Washington, D.C. 20301. (When ordering please cite publication number M03.)

T A B L E O F C O N T E N T S

<u>Section 1</u>	<u>Active Duty Military Manpower Statistics</u>	<u>Page</u>
Figure 1-1	Department of Defense Active Duty Military Personnel	3
Table P10	Summary of Military Personnel	5
Table P11	Department of Defense Manpower Comparison	6
Table P22.1	Total Active Duty Military Personnel by Service	7
Table P23.1	Active Duty Officer Personnel and Percent of Total Military Personnel by Service	8
Table P23.3	Total Active Duty Military Personnel by Type	9
Table P23.4	Army Active Duty Military Personnel by Type	10
Table P23.5	Navy Active Duty Military Personnel by Type	11
Table P23.6	Marine Corps Active Duty Military Personnel by Type	12
Table P23.7	Air Force Active Duty Military Personnel by Type	13
Table P23.41	Army Active Duty Military Personnel	14
Table P23.51	Navy Active Duty Military Personnel	15
Table P23.61	Marine Corps Active Duty Military Personnel	16
Table P23.71	Air Force Active Duty Military Personnel	17
Table P25.6	Women Military Personnel on Active Duty Officers and Enlisted by Service	18

<u>Section 1</u>	<u>Active Duty Military Manpower Statistics</u>	<u>Page</u>
Table P26.0	Military Personnel on Active Duty by Grade in Which Serving	19
Table P26.02	Female Military Personnel on Active Duty by Grade in Which Serving	20
Table P26.04	Military Personnel on Active Duty by Grade in Which Serving - Regular	21
Table P26.05	Military Personnel on Active Duty by Grade in Which Serving - Reserve	22
Table P27.1	Summary of Enlisted Personnel Procurement	23
Table P27.21	Army Enlisted Personnel Procurement	24
Table P27.22	Navy Enlisted Personnel Procurement	25
Table P27.23	Marine Corps Enlisted Personnel Procurement	26
Table P27.24	Air Force Enlisted Personnel Procurement	27
*Table P29.20-29.34	Reenlistment Rates by Service	28
*Table P309A	Active Duty Military Personnel Strength by Regional Area and by Country	31

* Prepared quarterly, this table is updated in March, June, September and December.

<u>Section 2</u>	<u>Reserve Military Manpower Statistics</u>	<u>Page</u>
Table R11.0	Reserve Component Strength Summary	39
Table R12.0	Reserve Strength - Officer and Enlisted Not on Active Duty	40
Table R13.0	Ready Reserve and Active Duty Strength Compared to Statutory Limitation	41
Table R14.0	Reserve Component Personnel by Reserve Category Not on Active Duty - Total	42
Table R14.0	Reserve Component Personnel by Reserve Category Not on Active Duty - Officers	43
Table R14.0	Reserve Component Personnel by Reserve Category Not on Active Duty - Enlisted	44
Table R21.0	Reserve Personnel on Active Duty by Component	45
Table R22.0	Reserve Strength on Active Duty	46
Table R23.0	Reserve Personnel by Component and Category Not on Active Duty	47
Table R24.0	Reserve Strength Not on Active Duty	48
Table R26.5	Selected Reserve Strength	49
	Glossary of Terms	50

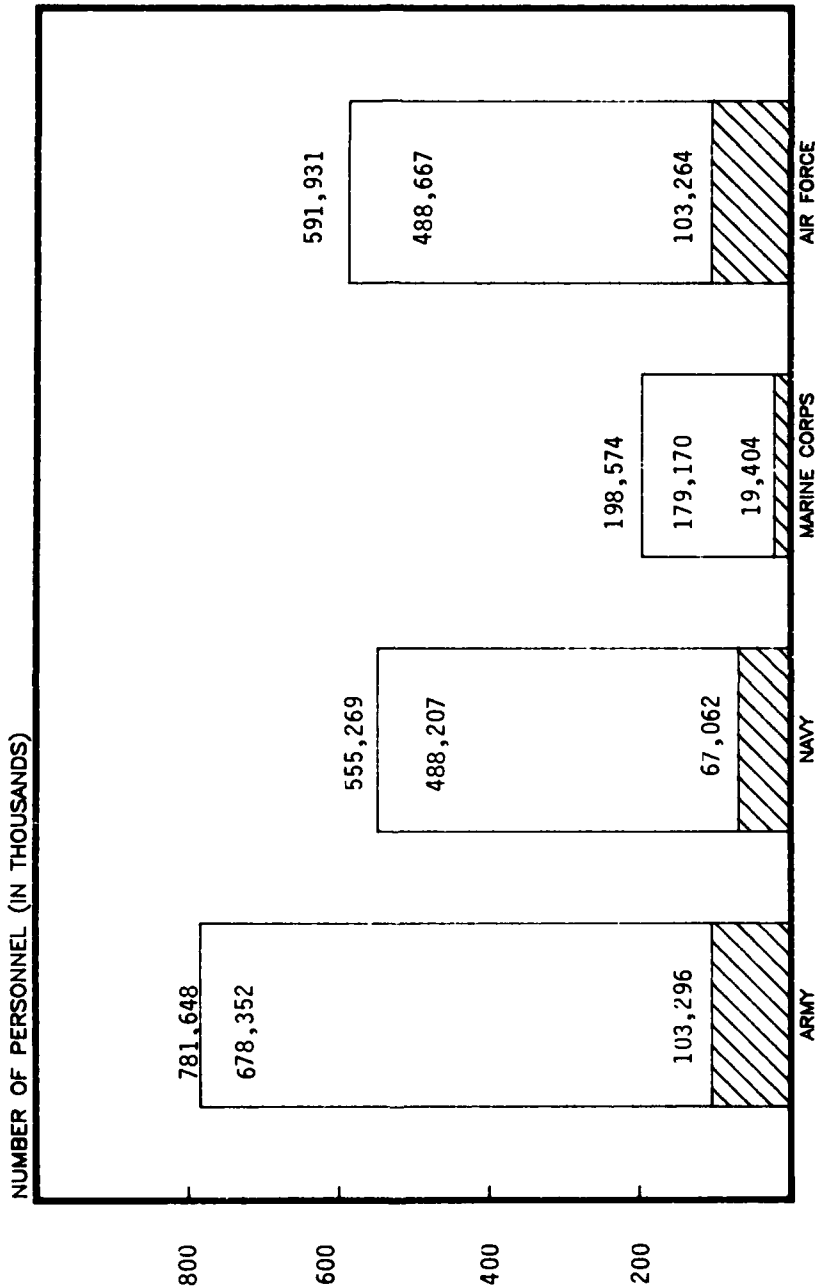
Section 1

ACTIVE DUTY MILITARY MANPOWER STATISTICS*

*NOTE: Excluded from all total DOD strength figures for Fiscal Year 1983 in this Section are approximately 41,000 full-time military personnel who are paid from other than active duty military personnel appropriations. This group is funded from appropriations for reserve components and Corps of Engineers civil functions.

DOD ACTIVE DUTY MILITARY PERSONNEL
MARCH 31, 1983

OFFICERS  ENLISTED/ CADETS 



MILITARY SERVICE

FIGURE 1-1

TABLE P10

DEPARTMENT OF DEFENSE
SUMMARY OF MILITARY PERSONNEL

	TOTAL DOD	ARMY	NAVY	MARINE CORPS	AIR FORCE
1. ACTIVE DUTY MILITARY AS OF 31 MAR 1983					
OFFICER	293,026	103,296	67,062	19,404	103,264
ENLISTED	1,821,315	674,028	483,680	179,170	484,437
ACADEMY CADETS	13,081	4,324	4,527	-	4,230
TOTAL ACTIVE DUTY MILITARY	2,127,422	781,648	555,269	198,574	591,931
2. GUARD AND RESERVES AS OF 31 MAR 1983					
NATIONAL GUARD IN PAID STATUS	527,231	425,257	-	-	101,974
	516,504	414,752	-	-	101,752
RESERVES IN PAID STATUS	1,731,716	943,396	328,469	95,767	364,084
	466,244	255,773	102,407	43,626	64,438
TOTAL GUARD AND RESERVES IN PAID STATUS	2,258,947	1,368,653	328,469	95,767	466,058
	982,748	670,525	102,407	43,626	166,190
3. OFFICER TRAINING IN COLLEGES A/ AS OF MAY 1982	102,594	75,769	7,457	-	19,348

A/ EXCLUDES 191,316 IN JUNIOR DIVISION, MILITARY
SCHOOLS AND NATIONAL DEFENSE CADETS CORPS.

TABLE P11
 DOD MANPOWER COMPARISON
 (MILITARY & CIVIL FUNCTIONS)

DATE	ARMY			AIR FORCE			NAVY AND MARINE CORPS			A/ O&D/ JUS		
	TOTAL DOD	MILI- TARY	B/ CIVIL- IAN	TOTAL	MILI- TARY	B/ CIVIL- IAN	TOTAL	NAVY MILI- TARY	MARINE CORPS MILI- TARY		B/ CIVIL- IAN	TOTAL
31 OCT 82	3,124,005	791,295	365,146	1,146,441	584,626	241,320	625,946	547,671	194,107	327,453	1,069,231	82,387
30 NOV 82	3,137,736	783,904	367,977	1,151,881	586,014	243,103	829,417	547,908	195,880	329,869	1,073,657	82,781
31 DEC 82	3,139,964	778,560	369,211	1,147,791	587,467	243,380	831,447	550,847	195,715	331,469	1,078,031	82,715
31 JAN 83	3,143,600	780,188	367,607	1,147,795	588,749	242,427	831,176	553,329	197,558	331,525	1,082,412	82,217
26 FEB 83	3,150,275	781,050	368,814	1,150,464	590,210	242,592	832,807	551,303	198,662	334,795	1,084,780	82,224
31 MAR 83	3,157,497	781,648	371,257	1,152,905	591,931	242,888	834,819	555,269	198,574	333,957	1,087,800	81,973

A/ CIVILIAN PERSONNEL. MILITARY PERSONNEL ASSIGNED TO OSD, OJCS AND OTHER DEFENSE ACTIVITIES ARE REPORTED BY THEIR RESPECTIVE SERVICES.

B/ -TOTAL PAID EMPLOYEES- AS REPORTED OFFICIALLY TO THE OFFICE OF PERSONNEL MANAGEMENT; EXCLUDES OVERSEAS SUPPORT PERSONNEL (INDIRECT HIRE).

TABLE P22.1

DEPARTMENT OF DEFENSE
TOTAL ACTIVE DUTY MILITARY PERSONNEL BY SERVICE

DATE	TOTAL DOD	ARMY	NAVY	MARINE CORPS	AIR FORCE
OCT 31, 1982	2,107,699	781,295	547,671	194,107	584,626
NOV 30, 1982	2,114,006	783,904	547,908	195,880	586,314
DEC 31, 1982	2,112,609	778,580	550,847	195,715	587,467
JAN 31, 1983	2,119,824	780,188	553,329	197,558	588,749
FEB 28, 1983	2,121,850	781,650	551,303	198,682	590,215
MAR 31, 1983	2,127,422	781,648	555,269	198,574	591,931

TABLE P23.1

DEPARTMENT OF DEFENSE
ACTIVE DUTY OFFICER PERSONNEL AND PERCENT OF TOTAL MILITARY PERSONNEL, BY SERVICE

DATE	TOTAL DOD		ARMY		NAVY		MARINE CORPS		AIR FORCE	
	NUMBER	%	NUMBER	%	NUMBER	%	NUMBER	%	NUMBER	%
OCT 31, 1982	290,847	13.8	103,232	13.2	66,365	12.1	18,922	9.7	102,328	17.5
NOV 30, 1982	291,369	13.8	103,247	13.2	66,522	12.2	18,866	9.6	102,634	17.5
DEC 31, 1982	291,693	13.8	103,151	13.2	66,548	12.1	19,238	9.8	102,756	17.5
JAN 31, 1983	292,414	13.8	103,448	13.3	66,560	12.0	19,364	9.8	103,042	17.5
FEB 28, 1983	292,764	13.8	103,312	13.2	66,846	12.1	19,427	9.8	103,179	17.5
MAR 31, 1983	293,026	13.8	103,296	13.2	67,062	12.1	19,404	9.8	103,264	17.4

TABLE P23.3

DEPARTMENT OF DEFENSE
TOTAL ACTIVE DUTY MILITARY PERSONNEL BY TYPE

DATE	OFFICERS	ENLISTED	A/ OFFICER CANDIDATES	TOTAL
OCT 31, 1982	290,847	1,803,409	13,443	2,107,699
NOV 30, 1982	291,369	1,809,240	13,397	2,114,006
DEC 31, 1982	291,693	1,807,613	13,303	2,112,609
JAN 31, 1983	292,414	1,814,190	13,220	2,119,824
FEB 28, 1983	292,764	1,815,980	13,106	2,121,850
MAR 31, 1983	293,026	1,821,315	13,061	2,127,422

A/ CONSISTS OF THE FOLLOWING:
FOR ARMY - CADETS, U. S. MILITARY ACADEMY
FOR NAVY - MIDSHPMEN, U. S. NAVAL ACADEMY
FOR AIR FORCE - CADETS, U. S. AIR FORCE ACADEMY

TABLE P23.4

DEPARTMENT OF DEFENSE
ARMY ACTIVE DUTY MILITARY PERSONNEL BY TYPE

DATE	OFFICERS	ENLISTED	CADETS U.S. MILITARY ACADEMY	TOTAL
OCT 31, 1982	103,232	673,600	4,463	781,295
NOV 30, 1982	103,247	676,223	4,434	783,904
DEC 31, 1982	103,151	671,033	4,396	778,580
JAN 31, 1983	103,448	672,355	4,385	780,188
FEB 28, 1983	103,312	674,009	4,329	781,650
MAR 31, 1983	103,296	674,028	4,324	781,648

TABLE P23.5

DEPARTMENT OF DEFENSE
NAVY ACTIVE DUTY MILITARY PERSONNEL BY TYPE

DATE	OFFICERS	ENLISTED	MIDSHIPMEN		TOTAL
			U. S. NAVAL ACADEMY		
OCT 31, 1982	66,365	476,768	4,538		547,671
NOV 30, 1982	66,622	476,754	4,532		547,908
DEC 31, 1982	66,548	479,766	4,533		550,847
JAN 31, 1983	66,560	482,241	4,528		553,329
FEB 28, 1983	66,846	479,929	4,528		551,303
MAR 31, 1983	67,062	483,680	4,527		555,269

TABLE P23.6

DEPARTMENT OF DEFENSE
MARINE CORPS ACTIVE DUTY MILITARY PERSONNEL BY TYPE

DATE	OFFICERS	ENLISTED	TOTAL
OCT 31, 1982	18,922	175,185	194,107
NOV 30, 1982	18,866	177,014	195,880
DEC 31, 1982	19,238	176,477	195,715
JAN 31, 1983	19,364	178,194	197,558
FEB 28, 1983	19,427	179,255	198,682
MAR 31, 1983	19,404	179,170	198,574

TABLE P23.7

DEPARTMENT OF DEFENSE
AIR FORCE ACTIVE DUTY MILITARY PERSONNEL BY TYPE

DATE	OFFICERS	ENLISTED	CADETS U.S.A.F. ACADEMY	TOTAL
OCT 31, 1982	102,328	477,856	4,442	584,626
NOV 30, 1982	102,634	479,249	4,431	586,314
DEC 31, 1982	102,756	480,337	4,374	587,467
JAN 31, 1983	103,042	481,400	4,307	588,749
FEB 28, 1983	103,179	482,787	4,249	590,215
MAR 31, 1983	103,264	484,437	4,230	591,931

TABLE P23.41

DEPARTMENT OF DEFENSE
ARMY ACTIVE DUTY MILITARY PERSONNEL

REPORTED STRENGTH, AND ADJUSTMENTS TO REPORTED STRENGTH TO DERIVE "DIRECT PROGRAM STRENGTH" CHARGEABLE TO APPROPRIATION "MILITARY PERSONNEL, ARMY"

DATE	REPORTED STRENGTH	(LESS) REIMBURSABLES	OFF	ENL	TOTAL	OFFICER	ENLISTED	CADETS USMA
31 OCT 1982	781,295		469	269	780,557	102,763	673,331	4,463
30 NOV 1982	783,904		466	264	783,174	102,781	675,959	4,434
31 DEC 1982	778,580		462	274	777,844	102,689	670,759	4,396
31 JAN 1983	780,188		467	293	779,428	102,981	672,062	4,385
28 FEB 1983	781,650		475	304	780,871	102,837	673,705	4,329
31 MAR 1983	781,648		474	306	780,868	102,822	673,722	4,324

TABLE P23.51

DEPARTMENT OF DEFENSE
NAVY ACTIVE DUTY MILITARY PERSONNEL

REPORTED STRENGTH, AND ADJUSTMENTS TO REPORTED STRENGTH TO DERIVE "DIRECT PROGRAM STRENGTH" CHARGEABLE TO APPROPRIATION "MILITARY PERSONNEL, NAVY"

DATE	REPORTED STRENGTH	(LESS) REIMBURSABLES		TOTAL	DIRECT PROGRAM STRENGTH CHARGEABLE TO APPROPRIATION "MILITARY PERSONNEL, NAVY"		OFFICER CANDIDATES
		OFFICER	ENLISTED		OFFICER	ENLISTED	
31 OCT 1962	547,671	414	1,030	546,227	65,951	475,738	4,538
30 NOV 1962	547,908	414	1,035	546,459	66,208	475,719	4,532
31 DEC 1962	550,847	414	1,062	549,371	66,134	478,704	4,533
31 JAN 1963	553,329	429	1,087	551,813	66,131	481,154	4,528
28 FEB 1963	551,303	427	1,091	549,785	66,419	478,838	4,528
31 MAR 1963	555,269	424	1,105	553,740	66,638	482,575	4,527

TABLE P23.61

DEPARTMENT OF DEFENSE
MARINE CORPS ACTIVE DUTY MILITARY PERSONNEL

REPORTED STRENGTH, AND ADJUSTMENTS TO REPORTED STRENGTH TO DERIVE "DIRECT PROGRAM STRENGTH" CHARGEABLE TO APPROPRIATION "MILITARY PERSONNEL, MARINE CORPS"

DATE	REPORTED STRENGTH	(LESS) REIMBURSABLES	DIRECT PROGRAM STRENGTH CHARGEABLE TO APPN. "MILITARY PERSONNEL, MARINE CORPS"		TOTAL	OFFICER CANDIDATES	
			OFFICER	ENLISTED		OFFICER	ENLISTED
31 OCT 1982	194,107	26	4	18,896	194,077	175,181	-
30 NOV 1982	195,880	26	4	18,840	195,850	177,010	-
31 DEC 1982	195,715	26	3	19,212	195,686	176,474	-
31 JAN 1983	197,558	25	3	19,339	197,530	178,191	-
28 FEB 1983	198,682	25	3	19,402	198,654	179,252	-
31 MAR 1983	198,574	25	3	19,379	198,546	179,167	-

TABLE P23.71

DEPARTMENT OF DEFENSE
AIR FORCE ACTIVE DUTY MILITARY PERSONNEL

REPORTED STRENGTH, AND ADJUSTMENTS TO REPORTED STRENGTH TO DERIVE "DIRECT PROGRAM STRENGTH" CHARGEABLE TO APPROPRIATION "MILITARY PERSONNEL, AIR FORCE"

DATE	REPORTED STRENGTH	(LESS) REIMBURSABLES	DIRECT PROGRAM STRENGTH CHARGEABLE TO APPROP. "MILITARY PERSONNEL, AIR FORCE"	USAF & AVCADS
	TOTAL	OFFICER	ENLISTED	TOTAL
		OFFICER	ENLISTED	OFFICER
				ENLISTED
				AVCADS
31 OCT 1982	584,626			584,626
30 NOV 1982	586,314			586,314
31 DEC 1982	587,467			587,467
31 JAN 1983	588,749			588,749
28 FEB 1983	590,215			590,215
31 MAR 1983	591,931			591,931

TABLE P25.6

DEPARTMENT OF DEFENSE
WOMEN MILITARY PERSONNEL ON ACTIVE DUTY, OFFICERS, AND ENLISTED BY SERVICE

DATE	TOTAL DOD			ARMY			NAVY			MARINE CORPS			AIR FORCE		
	TOTAL	OFF	ENL AND OFF CAND	TOTAL	OFF	ENL	TOTAL	OFF	ENL AND OFF CAND	TOTAL	OFF	ENL	TOTAL	OFF	ENL
31 OCT 82	189,515	25,507	164,008	72,260	9,029	63,231	43,836	5,786	38,050	8,556	564	7,992	64,863	10,128	54,735
30 NOV 82	192,750	25,703	167,047	74,792	9,097	65,695	44,113	5,843	38,270	8,647	558	8,089	65,198	10,205	54,993
31 DEC 82	193,062	25,739	167,323	74,358	9,079	65,279	44,673	5,833	38,840	8,586	586	8,000	65,445	10,241	55,204
31 JAN 83	195,056	25,919	169,137	75,519	9,129	66,390	45,213	5,880	39,333	8,682	593	8,089	65,642	10,317	55,325
28 FEB 83	195,768	25,973	169,795	75,965	9,104	66,861	45,127	5,965	39,162	8,808	596	8,212	65,868	10,308	55,560
31 MAR 83	196,869	26,034	170,835	76,162	9,096	67,066	45,914	6,014	39,900	8,810	595	8,215	65,983	10,329	55,654

TABLE P26.0

DEPARTMENT OF DEFENSE
MILITARY PERSONNEL ON ACTIVE DUTY BY GRADE IN WHICH SERVING A/
MARCH 31, 1983

RANK/GRADE	TOTAL DOD	ARMY	NAVY	MARINE CORPS	AIR FORCE
GENERAL - ADMIRAL	34	12	8	2	12
LT GENERAL - VICE ADMIRAL	118	45	32	6	35
MAJ GENERAL - REAR ADMIRAL (U)	362	140	78	24	120
BRIG GENERAL - REAR ADMIRAL (L)	532	198	131 B/	33	170
COLONEL - CAPTAIN	14,399	4,645	3,738	585	5,431
LIEUTENANT COL - COMMANDER	32,390	10,809	7,328	1,594	12,659
MAJOR - LT COMMANDER	50,850	16,372	12,806	3,051	18,621
CAPTAIN - LIEUTENANT	92,044	31,564	18,848	5,329	36,303
1ST LIEUTENANT - LIEUTENANT (JG)	47,357	16,425	10,538	3,956	16,438
2ND LIEUTENANT - ENSIGN	35,767	8,424	10,623	3,245	13,475
CHIEF WARRANT OFFICER W-4	2,140	1,520	479	141	-
CHIEF WARRANT OFFICER W-3	5,692	4,302	1,204	186	-
CHIEF WARRANT OFFICER W-2	7,576	5,622	1,249	705	-
WARRANT OFFICER W-1	3,765	3,216	-	547	-
TOTAL OFFICERS	293,026	103,296	67,062	19,404	103,264
E-9	13,587	4,056	3,443	1,237	4,851
E-8	36,139	14,969	7,910	3,610	9,650
E-7	121,439	48,052	29,210	8,998	35,179
E-6	216,304	82,262	66,761	14,567	54,614
E-5	343,527	118,498	91,867	27,987	105,155
E-4	415,757	180,520	93,610	34,081	107,545
E-3	388,566	115,747	105,923	45,797	121,099
E-2	145,487	48,124	45,943	26,841	24,579
E-1	138,509	61,700	38,993	16,052	21,764
TOTAL ENLISTED	1,821,315	674,028	483,680	179,170	484,437
CADETS & MIDSHIPMEN	13,081	4,324	4,527	-	4,230
GRAND TOTAL	2,127,422	781,648	555,269	198,574	591,931

A/ INCLUDES REIMBURSABLE ACTIVE DUTY
MILITARY PAY STRENGTHS

B/ INCLUDES 4 PERSONS IN THE NEWLY REESTABLISHED GRADE OF COMMODORE.

TABLE P26.02

DEPARTMENT OF DEFENSE
FEMALE MILITARY PERSONNEL ON ACTIVE DUTY BY GRADE IN WHICH SERVING A/
MARCH 31, 1983

RANK/GRADE	TOTAL DOD	ARMY	NAVY	MARINE CORPS	AIR FORCE
GENERAL	-	-	-	-	-
LT GENERAL	-	-	-	-	-
MAJ GENERAL	-	-	-	-	-
BRIG GENERAL	6	2	2	-	2
COLONEL	-	-	-	-	-
LIEUTENANT COL	254	87	84	5	78
MAJOR	944	289	282	30	343
	2,925	1,015	1,003	58	849
CAPTAIN	-	-	-	-	-
1ST LIEUTENANT	10,103	3,667	2,207	149	4,080
2ND LIEUTENANT	6,997	2,477	1,326	144	3,050
	4,570	1,381	1,093	169	1,927
CHIEF WARRANT OFFICER W-4	9	2	4	3	-
CHIEF WARRANT OFFICER W-3	18	7	5	6	-
CHIEF WARRANT OFFICER W-2	122	99	8	15	-
WARRANT OFFICER W-1	86	70	-	16	-
TOTAL OFFICERS	26,034	9,096	6,014	595	10,329
E-9	40	18	5	6	11
E-8	218	123	35	31	29
E-7	1,496	870	272	125	229
E-6	8,217	3,972	2,392	391	1,462
E-5	32,255	11,663	7,314	1,570	11,708
E-4	54,136	23,332	9,324	2,112	19,368
E-3	46,291	15,497	13,054	2,082	16,148
E-2	12,516	4,498	3,577	1,357	3,084
E-1	14,395	7,093	3,633	541	3,128
TOTAL ENLISTED	170,054	67,066	39,606	8,215	55,167
CADETS & MIDSHIPMEN	1,199	418	294	-	487
GRAND TOTAL	197,287	76,580	45,914	8,810	65,983

A/ INCLUDES REIMBURSABLE ACTIVE DUTY
MILITARY PAY STRENGTHS

TABLE P26.04

DEPARTMENT OF DEFENSE
MILITARY PERSONNEL ON ACTIVE DUTY BY GRADE IN WHICH SERVING
REGULAR A/
MARCH 31, 1983

RANK/GRADE	TOTAL DOD	ARMY	NAVY	MARINE CORPS	AIR FORCE
GENERAL - ADMIRAL	34	12	8	2	12
LT GENERAL - VICE ADMIRAL	116	43	32	6	35
MAJ GENERAL - REAR ADMIRAL (U)	359	138	78	23	120
BRIG GENERAL - REAR ADMIRAL (L)	530	196	131	33	170
COLONEL - CAPTAIN	13,946	4,487	3,651	574	5,234
LIEUTENANT COL - COMMANDER	30,332	9,858	6,978	1,571	11,925
MAJOR - LT COMMANDER	44,456	13,460	11,558	3,016	16,422
CAPTAIN - LIEUTENANT	54,007	12,080	13,202	4,646	24,079
1ST LIEUTENANT - LIEUTENANT (JG)	16,342	7,078	4,965	2,086	2,213
2ND LIEUTENANT - ENSIGN	8,939	2,306	4,043	810	1,780
CHIEF WARRANT OFFICER W-4	1,780	1,174	467	139	-
CHIEF WARRANT OFFICER W-3	3,729	2,357	1,191	181	-
CHIEF WARRANT OFFICER W-2	2,871	940	1,226	705	-
WARRANT OFFICER W-1	555	8	-	547	-
TOTAL OFFICERS	177,996	54,137	47,530	14,339	61,990
E-9	13,526	4,054	3,395	1,227	4,850
E-8	36,001	14,963	7,816	3,582	9,640
E-7	120,929	48,030	26,800	8,934	35,165
E-6	217,463	82,351	66,039	14,484	54,589
E-5	340,695	118,491	89,598	27,507	105,099
E-4	410,397	180,509	86,387	34,028	107,473
E-3	373,013	115,713	90,512	45,754	121,034
E-2	133,724	48,075	34,443	26,794	24,412
E-1	128,905	61,509	29,655	15,961	21,760
TOTAL ENLISTED	1,774,653	673,695	438,645	178,291	484,022
REGULAR TOTAL	1,952,649	727,832	486,175	192,630	546,012

A/ REGULAR PLUS RETIRED REGULAR OFFICERS ON ACTIVE DUTY.

TABLE P26.05
DEPARTMENT OF DEFENSE
MILITARY PERSONNEL ON ACTIVE DUTY BY GRADE IN WHICH SERVING

RESERVE A/

MARCH 31, 1983

RANK/GRADE	TOTAL DOD	ARMY	NAVY	MARINE CORPS	AIR FORCE
GENERAL - ADMIRAL	-	-	-	-	-
LT GENERAL - VICE ADMIRAL	2	2	-	-	-
MAJ GENERAL - REAR ADMIRAL (U)	3	2	-	1	-
BRIG GENERAL - REAR ADMIRAL (L)	2	2	-	-	-
COLONEL - CAPTAIN	453	158	87	11	197
LIEUTENANT COL - COMMANDER	2,058	951	350	23	734
MAJOR - LT COMMANDER	6,394	2,912	1,248	35	2,199
CAPTAIN - LIEUTENANT	38,037	19,484	5,646	593	12,224
1ST LIEUTENANT - LIEUTENANT (JG)	31,015	9,347	5,573	1,870	14,225
2ND LIEUTENANT - ENSIGN	26,328	6,118	5,580	2,435	11,695
CHIEF WARRANT OFFICER W-4	360	346	12	2	-
CHIEF WARRANT OFFICER W-3	1,963	1,945	13	5	-
CHIEF WARRANT OFFICER W-2	4,705	4,682	23	-	-
WARRANT OFFICER W-1	3,210	3,210	-	-	-
TOTAL OFFICERS	115,030	49,159	19,532	5,065	41,274
E-9	61	2	48	10	1
E-8	138	6	94	28	10
E-7	510	22	410	64	14
E-6	841	11	722	83	25
E-5	2,832	7	2,289	480	56
E-4	5,360	11	5,223	53	73
E-3	15,553	34	15,411	43	65
E-2	11,763	49	11,500	47	167
E-1	9,604	191	9,338	71	4
TOTAL ENLISTED	46,662	333	45,035	879	415
RESERVE TOTAL	161,692	49,492	64,567	5,944	41,689

A/ INCLUDES RESERVE, NATIONAL GUARD,
AUS, AND AFUS OFFICERS ON ACTIVE
DUTY.

TABLE P27.1
 DEPARTMENT OF DEFENSE
 SUMMARY OF ENLISTED PERSONNEL PROCUREMENT
 FISCAL YEAR 1983

	OCT 1982	NOV 1982	DEC 1982	JAN 1983	FEB 1983	MAR 1983
TOTAL DEPARTMENT OF DEFENSE	56,164	45,760	41,504	44,445	42,911	55,739
INDUCTIONS	-	-	-	-	-	-
FIRST ENLISTMENTS	32,960	25,024	19,632	24,641	22,275	27,560
IMMEDIATE REENLISTMENTS	16,229	16,620	18,590	15,269	17,111	23,444
OTHER REENLISTMENTS	3,956	2,645	1,835	2,468	2,268	2,631
RESERVES TO ACTIVE DUTY A/	3,019	1,471	1,447	2,067	1,257	2,104
ARMY	22,106	19,912	13,273	17,709	19,888	20,702
INDUCTIONS	-	-	-	-	-	-
FIRST ENLISTMENTS	13,475	11,907	6,125	9,701	11,776	12,341
IMMEDIATE REENLISTMENTS	6,921	6,589	6,584	6,994	6,795	7,251
OTHER REENLISTMENTS	1,664	1,268	525	1,046	1,267	1,011
RESERVES TO ACTIVE DUTY	46	148	39	68	50	99
NAVY	16,657	9,509	10,897	10,741	7,844	12,665
INDUCTIONS	-	-	-	-	-	-
FIRST ENLISTMENTS	9,238	4,264	5,657	5,824	2,645	6,968
IMMEDIATE REENLISTMENTS	3,188	3,270	3,091	2,253	3,641	2,908
OTHER REENLISTMENTS	1,489	708	815	807	448	1,071
RESERVES TO ACTIVE DUTY	2,742	1,267	1,334	1,857	1,110	1,918
MARINE CORPS	7,049	5,246	4,875	5,454	4,597	3,911
INDUCTIONS	-	-	-	-	-	-
FIRST ENLISTMENTS	4,756	3,591	2,609	3,856	2,934	2,272
IMMEDIATE REENLISTMENTS	1,757	1,290	1,991	1,158	1,335	1,395
OTHER REENLISTMENTS	336	316	210	311	239	167
RESERVES TO ACTIVE DUTY	200	49	65	129	89	77
AIR FORCE	10,352	11,093	12,459	10,541	10,582	18,261
INDUCTIONS	-	-	-	-	-	-
FIRST ENLISTMENTS	5,491	5,262	5,241	5,260	4,920	5,979
IMMEDIATE REENLISTMENTS	4,363	5,471	6,924	4,964	5,340	11,890
OTHER REENLISTMENTS	467	353	285	304	314	382
RESERVES TO ACTIVE DUTY	31	7	9	13	8	10

A/ INCLUDES NATIONAL GUARD.

TABLE P27.21

DEPARTMENT OF DEFENSE
ARMY ENLISTED PERSONNEL PROCUREMENT
FISCAL YEAR 1983

	OCT 1982	NOV 1982	DEC 1982	JAN 1983	FEB 1983	MAR 1983
TOTAL	22,106	19,912	13,273	17,709	19,888	20,702
REGULAR ENL. AND REENL. - TOTAL	22,060	19,764	13,234	17,641	19,838	20,603
FIRST ENLISTMENTS	13,475	11,907	6,125	9,701	11,776	12,341
REENLISTMENTS - TOTAL	8,585	7,857	7,109	7,940	8,062	8,262
IMMEDIATE REENLISTMENTS	6,921	6,589	6,584	6,894	6,795	7,251
FORMER REGULAR	6,921	6,588	6,584	6,893	6,795	7,250
FORMER RESERVE & N.G.	-	1	-	1	-	1
FORMER INDUCTEE	-	-	-	-	-	-
REENL. OTHER THAN IMMEDIATE	1,664	1,268	525	1,046	1,267	1,011
WITHIN 2-90 DAYS AFTER SEPARATION	164	94	48	55	48	32
FORMER REGULAR	7	9	8	11	8	6
FORMER RESERVE & N.G.	141	78	35	41	33	21
FORMER INDUCTEE	8	5	2	1	6	3
FORMER OFFICER	8	2	3	2	1	2
OVER 90 DAYS AFTER SEPARATION	1,500	1,174	477	991	1,219	979
INDUCTIONS	-	-	-	-	-	-
RESERVES AND N.G. CALLS	46	148	39	68	50	99

TABLE P27.22

DEPARTMENT OF DEFENSE
NAVY ENLISTED PERSONNEL PROCUREMENT
FISCAL YEAR 1983

	OCT 1982	NOV 1982	DEC 1982	JAN 1983	FEB 1983	MAR 1983
TOTAL	16,657	9,509	10,897	10,741	7,844	12,865
REGULAR ENL. AND REENL. - TOTAL	13,915	8,242	9,563	8,884	6,734	10,947
FIRST ENLISTMENTS	9,238	4,264	5,657	5,824	2,645	6,968
REENLISTMENTS - TOTAL	4,677	3,978	3,906	3,060	4,089	3,979
IMMEDIATE REENLISTMENTS	3,188	3,270	3,091	2,253	3,641	2,908
FORMER REGULAR	3,093	3,075	2,837	2,071	3,344	2,651
FORMER RESERVE	95	195	254	182	297	257
REENL. OTHER THAN IMMEDIATE	1,489	708	815	807	448	1,071
WITHIN 2-90 DAYS AFTER SEPARATION	311	126	138	114	83	173
FORMER REGULAR	311	126	138	114	83	173
FORMER RESERVE	-	-	-	-	-	-
OVER 90 DAYS AFTER SEPARATION	1,178	582	677	693	365	898
INDUCTIONS	-	-	-	-	-	-
RESERVES TO ACTIVE DUTY	2,742	1,267	1,334	1,857	1,110	1,918
FIRST ENLISTMENTS	179	95	148	113	195	145
REENLISTMENTS	2,563	1,172	1,186	1,744	915	1,773
REPORTED TO ACTIVE DUTY						

TABLE P27.23
 DEPARTMENT OF DEFENSE
 MARINE CORPS ENLISTED PERSONNEL PROCUREMENT
 FISCAL YEAR 1983

	OCT 1982	NOV 1982	DEC 1982	JAN 1983	FEB 1983	MAR 1983
TOTAL	7,049	5,246	4,875	5,454	4,597	3,911
REGULAR ENL. AND REENL. - TOTAL	6,849	5,197	4,810	5,325	4,508	3,834
FIRST ENLISTMENTS	4,756	3,591	2,609	3,856	2,934	2,272
REENLISTMENTS - TOTAL	2,093	1,606	2,201	1,469	1,574	1,562
IMMEDIATE REENLISTMENTS	1,757	1,290	1,991	1,158	1,335	1,395
FORMER REGULAR A/ FORMER RESERVE FORMER INDUCTEE	1,708 49 -	1,262 28 -	1,961 30 -	1,133 25 -	1,295 40 -	1,353 42 -
REENL. OTHER THAN IMMEDIATE	336	316	210	311	239	167
WITHIN 2-90 DAYS AFTER SEPARATION	50	33	28	38	21	23
FORMER REGULAR FORMER RESERVE FORMER INDUCTEE	45 - 5	31 2 -	24 4 -	29 9 -	20 - 1	19 3 1
OVER 90 DAYS AFTER SEPARATION B/	286	283	182	273	218	144
INDUCTIONS	-	-	-	-	-	-
RESERVES TO ACTIVE DUTY	200	49	65	129	89	77
FIRST ENLISTMENTS REENLISTMENTS REPORTED TO ACTIVE DUTY	1 199	1 48	- 65	1 128	- 89	- 77

A/ INCLUDES EXTENSIONS FOR WHICH REENLISTMENT BONUS IS PAID.
 B/ INCLUDES ENLISTMENTS OF FORMER OFFICERS.

TABLE P27.24

DEPARTMENT OF DEFENSE
AIR FORCE ENLISTED PERSONNEL PROCUREMENT
FISCAL YEAR 1983

	OCT 1982	NOV 1982	DEC 1982	JAN 1983	FEB 1983	MAR 1983
TOTAL	10,352	11,093	12,459	10,541	10,582	18,261
REGULAR ENL. AND REENL. - TOTAL	10,321	11,086	12,450	10,528	10,574	18,251
FIRST ENLISTMENTS	5,491	5,262	5,241	5,260	4,920	5,979
REENLISTMENTS - TOTAL	4,830	5,824	7,209	5,268	5,654	12,272
IMMEDIATE REENLISTMENTS	4,363	5,471	6,924	4,964	5,340	11,890
FORMER REGULAR FORMER RESERVE & N.G.	4,359 4	5,471 -	6,923 1	4,963 1	5,336 4	11,889 1
REENL. OTHER THAN IMMEDIATE	467	353	285	304	314	382
WITHIN 2-90 DAYS AFTER SEPARATION	-	-	-	-	-	-
FORMER REGULAR FORMER RESERVE & N.G.	-	-	-	-	-	-
OVER 90 DAYS AFTER SEPARATION A/	467	353	285	304	314	382
INDUCTIONS	-	-	-	-	-	-
RESERVES & N.G. TO ACTIVE DUTY	31	7	9	13	8	10

A/ INCLUDES ENLISTMENTS OF FORMER COMMISSIONED AND WARRANT OFFICERS.

TABLE P29 20-29 34

DEPARTMENT OF DEFENSE
REENLISTMENT RATES BY SERVICE

	A/ "UNADJUSTED" REENLISTMENT RATES FOR CAREER REGULARS				B/ "ADJUSTED" REENLISTMENT RATES FOR CAREER REGULARS					
	TOTAL DOD	ARMY	NAVY	MARINE CORPS	AIR FORCE	TOTAL DOD	ARMY	NAVY	MARINE CORPS	AIR FORCE
FY 1979										
ELIGIBLES	171,998	81,940	29,614	15,987	44,457	162,691	75,320	29,290	15,743	42,338
REENLISTMENTS	117,337	54,416	18,418	8,291	36,212	108,625	47,791	13,408	8,037	34,389
REENLISTMENT RATE	68.2%	66.4%	62.2%	51.9%	81.5%	66.8%	63.5%	62.8%	51.1%	81.2%
FY 1980										
ELIGIBLES	177,900	82,722	32,581	15,668	46,929	173,720	84,490	31,605	15,353	42,272
REENLISTMENTS	125,498	57,359	21,835	7,895	38,409	121,884	59,124	21,362	7,565	33,833
REENLISTMENT RATE	70.5%	69.3%	67.0%	50.4%	81.8%	70.2%	70.0%	67.6%	49.3%	80.0%
FY 1981										
ELIGIBLES	172,448	77,981	39,196	5,578	49,693	173,303	88,944	36,879	4,950	42,530
REENLISTMENTS	132,092	56,580	28,551	4,177	42,784	133,278	67,542	26,518	3,552	35,666
REENLISTMENT RATE	76.6%	72.6%	72.8%	74.9%	86.1%	76.9%	75.9%	71.9%	71.8%	83.9%
FY 1982										
ELIGIBLES	180,434	81,029	38,533	11,606	49,266	175,586	86,759	38,479	11,825	38,523
REENLISTMENTS	147,186	63,623	30,305	8,855	44,403	152,334	69,353	30,579	9,068	33,727
REENLISTMENT RATE	81.6%	78.5%	78.6%	76.3%	90.1%	86.8%	79.9%	79.5%	76.7%	87.6%
FY 1983 (6 MOS)										
ELIGIBLES	89,200	43,021	16,677	7,165	22,337	84,153	45,552	18,417	5,842	14,342
REENLISTMENTS	73,318	33,063	13,708	5,769	20,778	68,311	35,594	15,473	4,447	12,797
REENLISTMENT RATE	82.2%	76.9%	82.2%	80.5%	93.0%	81.2%	78.1%	84.0%	75.1%	89.2%

A/ "UNADJUSTED REENLISTMENT RATE" - THE RATIO OF TOTAL REENLISTMENTS OCCURRING IN A GIVEN PERIOD TO TOTAL SEPARATIONS ELIGIBLE TO REENLIST IN THE SAME PERIOD, EXPRESSED AS A PERCENTAGE.
 B/ "ADJUSTED REENLISTMENT RATE" - THE "UNADJUSTED" RATE ADJUSTED TO EXCLUDE THE EFFECTS OF: (1) EARLY SEPARATIONS FOR IMMEDIATE REENLISTMENTS AND (2) OTHER EARLY DISCHARGES OF ELIGIBLES UNDER EARLY RELEASE PROGRAMS.

TABLE P29.20-29.34

DEPARTMENT OF DEFENSE
REENLISTMENT RATES BY SERVICE

	A/ "UNADJUSTED" REENLISTMENT RATES FOR FIRST-TERM REGULARS					B/ "ADJUSTED" REENLISTMENT RATES FOR FIRST-TERM REGULARS				
	TOTAL DOD	ARMY	NAVY	MARINE CORPS	AIR FORCE	TOTAL DOD	ARMY	NAVY	MARINE CORPS	AIR FORCE
FY 1979										
ELIGIBLES	171,034	62,909	45,204	21,029	41,892	159,988	59,604	44,308	20,925	35,151
REENLISTMENTS	64,001	27,027	16,949	4,107	15,918	54,369	23,714	17,080	4,010	9,565
REENLISTMENT RATE	37.4%	43.0%	37.5%	19.5%	38.0%	34.0%	39.6%	38.5%	19.2%	27.2%
FY 1980										
ELIGIBLES	165,525	50,288	53,670	19,364	42,203	161,232	52,231	51,976	19,575	37,450
REENLISTMENTS	64,762	25,434	19,721	4,493	15,114	61,610	27,370	19,138	4,672	10,430
REENLISTMENT RATE	39.1%	50.6%	36.7%	23.2%	35.8%	38.2%	52.4%	36.8%	23.9%	27.9%
FY 1981										
ELIGIBLES	161,600	38,762	55,107	23,875	43,856	158,676	43,013	53,583	24,120	37,960
REENLISTMENTS	69,435	21,312	22,968	6,340	18,815	67,709	25,563	22,521	6,630	12,995
REENLISTMENT RATE	43.0%	55.0%	41.7%	26.6%	42.9%	42.7%	59.4%	42.0%	27.5%	34.2%
FY 1982										
ELIGIBLES	148,862	36,302	43,659	21,342	47,559	149,480	39,276	45,522	21,769	42,913
REENLISTMENTS	77,279	21,008	21,949	7,262	27,060	69,725	23,982	23,871	3,103	18,769
REENLISTMENT RATE	51.9%	57.9%	50.3%	34.0%	56.9%	46.6%	61.1%	52.4%	14.3%	43.7%
FY 1983 (6 MOS)										
ELIGIBLES	72,020	18,697	18,812	10,057	24,454	62,709	20,995	18,931	9,002	13,781
REENLISTMENTS	40,798	8,202	9,901	4,521	18,174	31,920	10,500	10,473	3,425	7,522
REENLISTMENT RATE	56.6%	43.9%	52.6%	45.0%	74.3%	50.9%	50.0%	55.3%	38.0%	54.6%

TABLE P29.20-29.34

DEPARTMENT OF DEFENSE
REENLISTMENT RATES BY SERVICE

	A/ "UNADJUSTED" REENLISTMENT RATES FOR TOTAL REGULARS					B/ "ADJUSTED" REENLISTMENT RATES FOR TOTAL REGULARS					REENLISTMENT RATE ARMY INDUCTEES	
	TOTAL DOD	ARMY	NAVY	MARINE CORPS	AIR FORCE	TOTAL DOD	ARMY	NAVY	MARINE CORPS	AIR FORCE	UN- ADJUSTED	AD- JUSTED
FY 1979												
ELIGIBLES	343,032	144,849	74,818	37,016	86,349	322,679	134,924	73,598	36,668	77,489	-	-
REENLISTMENTS	181,338	81,443	35,367	12,398	52,130	162,994	71,505	35,488	12,047	43,954	-	-
REENLISTMENT RATE	52.9%	56.2%	47.3%	33.5%	60.4%	50.5%	53.0%	48.2%	32.9%	56.7%	-	-
FY 1980												
ELIGIBLES	343,425	133,010	86,251	35,032	89,132	334,952	136,721	83,581	34,928	79,722	-	-
REENLISTMENTS	190,260	82,793	41,556	12,388	53,523	183,494	86,494	40,500	12,237	44,263	-	-
REENLISTMENT RATE	55.4%	62.2%	48.2%	35.4%	60.0%	54.8%	63.3%	48.5%	35.0%	55.5%	-	-
FY 1981												
ELIGIBLES	334,048	116,743	94,303	29,453	93,549	331,979	131,957	90,462	29,070	80,490	-	-
REENLISTMENTS	201,527	77,892	51,519	10,517	61,599	200,987	93,105	49,039	10,182	48,661	-	-
REENLISTMENT RATE	60.3%	66.7%	54.6%	35.7%	65.8%	60.5%	70.6%	54.2%	35.0%	60.5%	-	-
FY 1982												
ELIGIBLES	329,296	117,331	82,192	32,948	96,825	325,066	126,035	84,001	33,594	81,436	-	-
REENLISTMENTS	224,465	84,631	52,254	16,117	71,463	222,059	93,335	54,450	12,171	62,103	-	-
REENLISTMENT RATE	68.2%	72.1%	63.6%	48.9%	73.8%	68.3%	74.1%	64.8%	36.2%	76.3%	-	-
FY 1983 (6 MOS)												
ELIGIBLES	161,220	61,718	35,489	17,222	46,791	146,862	66,547	37,348	14,844	28,123	-	-
REENLISTMENTS	114,116	41,265	23,609	10,290	38,952	100,231	46,094	25,946	7,872	20,319	-	-
REENLISTMENT RATE	70.8%	66.9%	66.5%	59.7%	83.2%	68.2%	69.3%	69.5%	53.0%	72.3%	-	-

TABLE P309A

 DEPARTMENT OF DEFENSE
 ACTIVE DUTY MILITARY PERSONNEL STRENGTHS BY REGIONAL AREA AND BY COUNTRY 1/

REGIONAL AREA/COUNTRY	MARCH 31, 1983				
	TOTAL	ARMY	AIR FORCE	NAVY	MARINE CORPS
U. S. TERRITORY AND SPECIAL LOCATIONS					
CONTINENTAL UNITED STATES (CONUS)	1,299,513	474,883	433,466	248,652	142,512
ALASKA	20,838	8,206	10,819	1,603	210
HAWAII	46,306	17,511	6,266	12,600	9,929
GUAM	9,114	34	3,985	4,748	347
JOHANSTON ATOLL	142	136	6	0	0
NAVASSA ISLAND	4	4	0	0	0
PUERTO RICO	3,570	442	46	2,896	186
TRUST TERRITORY OF THE PACIFIC ISLANDS	39	33	1	5	0
VIRGINIA ISLANDS OF THE U.S.	10	9	0	1	0
WAKE ISLAND	8	0	0	0	0
TRANSIENTS	61,979	21,096	16,420	17,154	7,309
AFLCMT	168,830	0	0	166,442	2,388
TOTAL-U.S. TERR. AND SPECIAL LOCATIONS	1,610,353	522,354	471,017	454,181	162,881
(1) WESTERN & SOUTHERN EUROPE					
AUSTRIA	32	5	2	0	25
BELGIUM*	2,306	1,510	651	113	32
CYPRUS	14	3	1	0	10
DENMARK*	54	5	20	16	13
FINLAND	18	5	2	2	9
FRANCE*	95	43	11	8	33
GERMANY (FED.- REPUBLIC & WEST BERLIN)*	248,386	209,897	38,104	295	90
GIBRALTAR	1	0	0	1	0
GREECE*	3,550	627	2,469	439	15
GREENLAND*	318	0	318	0	0
ICELAND*	3,090	2	1,087	1,888	113
IRELAND	8	2	0	0	6
ITALY*	13,053	4,315	4,331	4,140	267
LUXEMBOURG*	6	0	0	0	6
MALTA	2	2	0	0	0
NETHERLANDS*	2,651	822	1,805	15	9
MOKHAY*	201	38	115	34	14
PORTUGAL*	1,613	69	1,146	385	13
SPAIN*	9,461	18	5,402	3,853	188
SWEDEN	17	1	6	2	8
SWITZERLAND	31	5	3	0	23
TURKEY*	5,162	1,289	3,762	92	19
UNITED KINGDOM*	26,944	255	23,996	2,353	342
AFFLOAT	16,306	0	0	14,072	2,234

1/ INCLUDES PERSONNEL PERMANENTLY ASSIGNED AND ON TDY OVER 30 DAYS.

TABLE P309A

DEPARTMENT OF DEFENSE
ACTIVE DUTY MILITARY PERSONNEL STRENGTHS BY REGIONAL AREA AND BY COUNTRY

MARCH 31, 1983

REGIONAL AREA/COUNTRY	TOTAL	ARMY	AIR FORCE	NAVY	MARINE CORPS
TOTAL-WESTERN & SOUTHERN EUROPE	333,319	218,913	83,231	27,708	3,467
(•EUROPEAN NATO)	(316,890)	(218,890)	(83,217)	(13,631)	(1,152)
(•EUROPEAN NATO PERMANENTLY ASSIGNED)	(315,159)	(218,948) ^{2/}	(81,501)	(13,576)	(1,134)
(2) EAST ASIA AND PACIFIC					
AUSTRALIA	698	6	277	407	8
BURMA	11	3	2	0	6
CHINA	19	5	2	2	10
FIJI	1	0	0	1	0
HONG KONG	41	13	4	14	10
INDONESIA	44	12	11	10	11
JAPAN (INCLUDING OKINAWA)	48,427	2,419	14,468	7,496	24,044
MALAYSIA	17	8	2	0	7
NEW ZEALAND	65	2	10	47	6
PHILIPPINES	14,956	163	8,951	5,044	798
REPUBLIC OF KOREA	41,273	28,653	11,033	341	1,246
SINGAPORE	30	7	3	11	9
THAILAND	109	55	33	10	11
AFLOAT	26,918	0	0	24,226	2,692
TOTAL-EAST ASIA & PACIFIC	132,609	31,346	34,796	37,609	28,858
(3) AFRICA, NEAR EAST AND SOUTH ASIA					
AFGHANISTAN	6	0	0	0	6
ALGERIA	8	2	0	0	6
BAHRAIN	83	2	0	81	0
BANGLADESH	8	2	0	0	6
BRITISH INDIAN OCEAN TERRITORY (INCLUDES DIEGO GARCIA)	1,162	0	10	1,152	0
CAMERON	8	2	0	0	6
CONGO	7	1	0	0	6
EGYPT	1,441	1,276	108	31	26
ETHIOPIA	7	0	0	0	7
GABON	6	0	0	0	6
GHANA	11	3	0	0	8
INDIA	38	5	4	5	24
ISRAEL	75	24	17	6	28
IVORY COAST	10	3	0	0	7
JORDAN	30	16	7	0	7
KENYA	33	15	4	1	13
KUWAIT	26	18	1	1	6

2/ HIGHER FIGURE FOR PERMANENTLY ASSIGNED PERSONNEL RESULTS FROM A GREATER NUMBER OF EUROPEAN NATO PERMANENTLY ASSIGNED PERSONNEL ON TDY ELSEWHERE THAN PERSONNEL ON TDY IN EUROPEAN NATO FROM OTHER AREAS.

TABLE P309A

DEPARTMENT OF DEFENSE
ACTIVE DUTY MILITARY PERSONNEL STRENGTHS BY REGIONAL AREA AND BY COUNTRY

REGIONAL AREA/COUNTRY	MARCH 31, 1983				
	TOTAL	ARMY	AIR FORCE	NAVY	MARINE CORPS
LEBANON	52	34	0	1	17
LIBERIA	25	13	2	3	7
MADAGASCAR	8	0	0	2	6
MALAWI	2	2	0	0	0
MALDIVES	0	0	0	0	0
MALI	6	0	0	0	6
MAURITIUS	6	0	0	0	6
MOROCCO	44	15	11	2	16
NEPAL	8	2	0	0	6
NIGER	6	0	0	0	6
NIGERIA	19	3	3	0	13
OMAN	7	3	3	1	0
PAKISTAN	29	7	6	1	15
ST. HELENA (INCLUDES ASCENSION ISLAND)	9	0	9	0	0
SAUDI ARABIA	621	247	306	55	13
SENEGAL	11	0	0	2	9
SEYCHELLES	4	0	4	0	0
SOMALIA	15	7	1	1	6
SOUTH AFRICA	23	2	7	2	12
SRI LANKA	9	0	0	3	6
SUDAN	24	11	4	0	9
SYRIA	12	3	0	0	9
TANZANIA, UNITED REPUBLIC OF	8	0	0	0	8
TUNISIA	21	13	1	1	6
UNITED ARAB EMIRATES	2	0	2	0	0
UPPER VOLTA	6	0	0	0	6
YEMEN (SANA'A)	24	15	3	0	6
ZAIRE	25	11	5	0	9
ZAMBIA	6	0	0	0	6
ZIMBABWE	8	0	0	0	8
AFLOAT	17,502	0	0	15,554	1,948
TOTAL-AFRICA, NEAR EAST & SOUTH ASIA	21,501	1,757	518	16,905	2,321
(*) WESTERN HEMISPHERE					
ANTIGUA	122	0	1	121	0
ARGENTINA	23	4	8	2	9
BARBADOS, THE	44	0	6	32	6
BERMUDA	7	0	0	1	6
BELIZE	2	2	0	0	0
BERMUDA	1,854	0	0	1,759	95
BOLIVIA	11	2	2	0	7

TABLE P 309A

DEPARTMENT OF DEFENSE
ACTIVE DUTY MILITARY PERSONNEL STRENGTHS BY REGIONAL AREA AND BY COUNTRY

MARCH 31, 1983

REGIONAL AREA/COUNTRY	TOTAL	ARMY	ATR FORCE	NAVY	MARINE CORPS
BRAZIL	50	11	7	7	25
CANADA	657	10	202	433	12
CHILE	16	3	1	1	11
COLOMBIA	28	5	6	3	14
COSTA RICA	12	3	0	0	9
CUBA (GUANTANAMO)	2,313	0	0	1,844	469
DOMINICAN REPUBLIC	16	2	2	3	9
ECUADOR	25	6	7	3	9
EL SALVADOR	68	46	1	1	20
GUATEMALA	19	5	1	0	13
GUYANA	6	0	0	0	6
HAITI	14	5	1	0	8
HONDURAS	26	7	9	1	9
JAMAICA	13	0	0	3	10
MEXICO	29	8	6	2	13
NICARAGUA	12	4	0	0	8
PANAMA	9,507	6,972	2,027	361	147
PARAGUAY	13	4	1	1	7
PERU	30	6	7	9	8
SURINAME	2	2	0	0	0
TURKS AND CAICOS ISLANDS	1	0	1	0	0
URUGUAY	14	4	2	1	7
VENEZUELA	29	4	11	5	9
AFLCAT	13,717	0	0	13,712	5
TOTAL-WESTERN HEMISPHERE	28,680	7,115	2,309	18,305	951
(5) ANTARCTICA	67	0	0	67	0
(6) EASTERN EUROPE					
BULGARIA	9	1	2	0	6
CZECHOSLOVAKIA	10	1	3	0	6
GERMAN DEMOCRATIC REPUBLIC	47	40	0	0	7
HUNGARY	12	4	1	0	7
POLAND	16	3	1	0	12
ROMANIA	15	4	1	0	10
UNION OF SOVIET SOCIALIST REPUBLICS	57	7	8	3	39
YUGOSLAVIA	18	4	4	1	9
AFLCAT	223	0	0	223	0
TOTAL-EASTERN EUROPE	407	64	20	227	96
(7) UNDISTRIBUTED	277	99	40	138	0

TABLE P309A

DEPARTMENT OF DEFENSE
ACTIVE DUTY MILITARY PERSONNEL STRENGTHS BY REGIONAL AREA AND BY COUNTRY

MARCH 31, 1983

REGIONAL AREA/COUNTRY	TOTAL	ARMY	AIR FORCE	NAVY	MARINE CORPS
TOTAL FOREIGN COUNTRIES	517,069	259,294	120,914	101,168	35,693
ASHORE	442,194	259,294	120,914	33,172	28,814
AFLOAT	74,875	0	0	67,996	6,879
TOTAL WORLDWIDE	2,127,422	781,648	591,931	555,269	198,574
ASHORE	1,883,717	781,648	591,931	320,831	189,307
AFLOAT	243,705	0	0	234,438	9,267

NOTE. ASHORE INCLUDES TEMPORARILY SHORE-BASED.

Section 2

RESERVE MILITARY MANPOWER STATISTICS*

TABLE R11.0

DEPARTMENT OF DEFENSE
RESERVE COMPONENT STRENGTH SUMMARY

MARCH 31, 1983

TYPE OF DUTY	RESERVES BY RESERVE CATEGORY		
	TOTAL	OFFICER	ENLISTED A/
TOTAL	2,258,947	692,993	1,565,954
READY RESERVE NOT ON ACTIVE DUTY	1,376,446	217,623	1,158,623
ACTIVE STATUS	1,367,763	217,221	1,150,542
INACTIVE STATUS B/	8,683	602	6,081
STANDBY RESERVE ON ACTIVE STATUS	45,456	43,545	1,911
INACTIVE STATUS	6,927	5,109	1,818
	38,529	38,436	93
RETIRED - RETIRED STATUS	837,045	431,625	405,420

A/ INCLUDES OFFICER CANDIDATES.

B/ INACTIVE NATIONAL GUARD AND REP'S IN NON-PAY STATUS.

SELECTED RESERVE	RESERVES IN "PAID STATUS"		
	PAY GROUP	TOTAL	OFFICER ENLISTED
A, B, C, F, P, T, Q	982,748	137,718	845,030
U, AGR*			

* FULL-TIME ACTIVE DUTY SUPPORT PERSONNEL

TABLE R12.0

DEPARTMENT OF DEFENSE
RESERVE STRENGTH - OFFICER AND ENLISTED
NOT ON ACTIVE DUTY

DATE	TOTAL	OFFICERS	ENLISTED A/
31 OCT 1982	2,262,518	695,033	1,567,485
30 NOV 1982	2,264,041	695,669	1,568,372
31 DEC 1982	2,269,969	696,301	1,573,668
31 JAN 1983	2,270,165	696,098	1,574,067
28 FEB 1983	2,257,908	693,531	1,564,377
31 MAR 1983	2,258,947	692,993	1,565,954

A/ INCLUDES OFFICER CANDIDATES.

TABLE R13.0

DEPARTMENT OF DEFENSE
 READY RESERVE AND ACTIVE DUTY STRENGTH COMPARED TO STATUTORY LIMITATION
 MARCH 31, 1963

	TOTAL	ON ACTIVE DUTY	NOT ON ACTIVE DUTY
STATUTORY READY RESERVE LIMITATION A/	2,900,000		
DIFFERENCE	1,343,957		
READY RESERVE AND ACTIVE DUTY STRENGTH	1,556,043	162,310	1,393,733
COAST GUARD RESERVE	17,904	617	17,287
DOD RESERVE	1,538,139	161,693	1,376,446
ARMY	950,377	49,493	900,884
NATIONAL GUARD B/	425,845	588	425,257
ARMY RESERVE	524,532	48,905	475,627
NAVAL RESERVE	245,766	64,567	181,199
MARINE CORPS RESERVE	92,169	5,944	86,225
AIR FORCE	249,827	41,689	208,138
AIR NATIONAL GUARD C/	102,219	245	101,974
AIR FORCE RESERVE	147,608	41,444	106,164

A/ SECTION 205(B), ARMED FORCES RESERVE ACT OF 1952, AS AMENDED.

B/ INCLUDES "INACTIVE NATIONAL GUARD" NUMBERING 8,683 AND REP'S NUMBERING 1,822

C/ INCLUDES REP'S IN A NON-PAY STATUS NUMBERING 128.

TABLE R14.0

DEPARTMENT OF DEFENSE
RESERVE COMPONENT PERSONNEL BY RESERVE CATEGORY
NOT ON ACTIVE DUTY

DATE	TOTAL		
	READY	STANDBY	RETIRED
31 OCT 1982	1,372,075	51,587	838,856
30 NOV 1982	1,373,379	51,152	839,510
31 DEC 1982	1,381,423	49,175	839,371
31 JAN 1983	1,380,977	50,082	839,106
28 FEB 1983	1,372,648	47,362	837,898
31 MAR 1983	1,376,446	45,456	837,045

TABLE R14.0

DEPARTMENT OF DEFENSE
RESERVE COMPONENT PERSONNEL BY RESERVE CATEGORY
NOT ON ACTIVE DUTY

OFFICERS

DATE	TOTAL	READY	STANDBY	RETIRED
31 OCT 1982	695,033	217,572	47,335	430,126
30 NOV 1982	695,669	217,692	47,001	430,976
31 DEC 1982	696,301	219,158	46,717	430,426
31 JAN 1983	696,098	218,130	47,353	430,615
28 FEB 1983	693,531	217,504	44,603	431,424
31 MAR 1983	692,993	217,823	43,545	431,625

TABLE R14.0
 DEPARTMENT OF DEFENSE
 RESERVE COMPONENT PERSONNEL BY RESERVE CATEGORY
 NOT ON ACTIVE DUTY
 ENLISTED A/

DATE	TOTAL	READY	STANDBY	RETIRED
31 OCT 1982	1,567,485	1,154,503	4,252	408,730
30 NOV 1982	1,568,372	1,155,687	4,151	408,534
31 DEC 1982	1,573,668	1,162,265	2,458	408,945
31 JAN 1983	1,574,067	1,162,847	2,729	408,491
28 FEB 1983	1,564,377	1,155,144	2,759	406,474
31 MAR 1983	1,565,954	1,158,623	1,911	405,420

A/ INCLUDES OFFICER CANDIDATES.

TABLE R21.0
 DEPARTMENT OF DEFENSE
 RESERVE PERSONNEL ON ACTIVE DUTY BY COMPONENT
 MARCH 31, 1983

COMPONENT/PERSONNEL	TOTAL	OFFICER	ENLISTED A/
TOTAL DEPARTMENT OF DEFENSE	161,693	115,031	46,662
ARMY - TOTAL	49,493	49,160	333
NATIONAL GUARD OF THE U. S.	588	482	106
ARMY RESERVE	48,905	48,678	227
NAVAL RESERVE	64,567	19,532	45,035
MARINE CORPS RESERVE	5,944	5,065	879
AIR FORCE - TOTAL	41,589	41,274	415
AIR NATIONAL GUARD OF THE U. S.	245	209	36
AIR FORCE RESERVE	41,444	41,065	379

A/ INCLUDES OFFICER CANDIDATES.

TABLE R22.0
 DEPARTMENT OF DEFENSE
 RESERVE STRENGTH ON ACTIVE DUTY A/

DATE	TOTAL DOD	ARMY			AIR FORCE		
		NATIONAL GUARD	ARMY RESERVE	NAVAL RESERVE	MARINE CORPS RESERVE	AIR NATIONAL GUARD	AIR FORCE RESERVE
31 OCT 1982	161,295	498	49,281	63,936	6,065	252	41,263
30 NOV 1982	161,956	520	49,484	64,061	5,989	254	41,648
31 DEC 1982	161,052	509	49,244	64,158	5,206	249	41,686
31 JAN 1983	162,304	534	49,238	64,632	5,689	244	41,967
28 FEB 1983	161,980	546	49,051	64,346	6,064	240	41,733
31 MAR 1983	161,693	588	48,905	64,567	5,944	245	41,444

A/ CONTINUOUS OR EXTENDED ACTIVE DUTY.
 EXCLUDES ACTIVE DUTY FOR RESERVE TRAINING.

TABLE R23.0

DEPARTMENT OF DEFENSE
RESERVE PERSONNEL BY COMPONENT AND CATEGORY
NOT ON ACTIVE DUTY

MARCH 31, 1983

COMPONENT/ PERSONNEL	TOTAL	NAT'L GUARD OF THE U.S. A/	ARMY RESERVE	NAVAL RESERVE	MARINE CORPS RESERVE	AIR B/ NAT'L GUARD OF THE U.S.	AIR FORCE RESERVE
TOTAL	2,258,947	425,257	943,396	328,469	95,767	101,974	364,084
OFFICER	692,993	40,921	299,988	163,050	14,045	12,555	162,434
ENLISTED C/	1,565,954	384,336	643,408	165,419	81,722	89,419	201,650
READY RESERVE	1,376,446	425,257	475,627	181,199	86,225	101,974	106,164
OFFICER	217,823	40,921	93,184	40,574	6,565	12,555	24,004
ENLISTED C/	1,158,623	384,336	382,443	140,625	79,640	89,419	82,160
STANDBY RESERVE	45,456	-	269	14,740	1,455	-	28,992
OFFICER	43,545	-	191	13,729	1,357	-	28,268
ENLISTED	1,911	-	78	1,011	98	-	724
ACTIVE STATUS	6,927	-	179	1,041	627	-	5,080
OFFICER	5,109	-	101	88	530	-	4,390
ENLISTED	1,818	-	78	953	97	-	690
INACTIVE STATUS	38,529	-	90	13,699	828	-	23,912
OFFICER	38,436	-	90	13,641	827	-	23,878
ENLISTED	93	-	-	58	1	-	34
RETIRED RESERVE	837,045	-	467,500	132,530	8,087	-	228,928
OFFICER	431,625	-	206,613	108,747	6,103	-	110,162
ENLISTED	405,420	-	260,887	23,783	1,984	-	118,766

A/ INCLUDES "INACTIVE NATIONAL GUARD" NUMBERING 8,683 TOTAL, 602 OFFICERS, 8,081 ENLISTED

AND RESERVE ENLISTMENT PROGRAM (REPS) IN A NON-PAY STATUS NUMBERING 1,822.

B/ INCLUDES REPS IN A NON-PAY STATUS NUMBERING 128.

C/ INCLUDES OFFICER CANDIDATES.

TABLE R24.0

DEPARTMENT OF DEFENSE
RESERVE STRENGTH NOT ON ACTIVE DUTY A/

DATE	TOTAL DOD	ARMY			AIR FORCE		
		B/ NATIONAL GUARD	ARMY RESERVE	NAVAL RESERVE	MARINE CORPS RESERVE	AIR NATIONAL GUARD	AIR FORCE RESERVE
31 OCT 1982	2,262,518	419,717	948,150	325,527	94,741	100,718	373,665
30 NOV 1982	2,264,041	420,641	950,009	325,839	94,692	100,785	372,075
31 DEC 1982	2,269,969	421,739	946,857	336,706	94,855	101,322	368,490
31 JAN 1983	2,270,165	423,246	947,833	334,367	95,533	101,535	367,651
28 FEB 1983	2,257,908	424,247	939,212	331,396	96,007	101,790	365,256
31 MAR 1983	2,258,947	425,257	943,396	328,469	95,767	101,974	364,084

A/ INCLUDES RESERVES ON ACTIVE DUTY
FOR RESERVE TRAINING PURPOSES.
B/ INCLUDES "INACTIVE" NATIONAL GUARD.

TABLE R26.5

DEPARTMENT OF DEFENSE
SELECTED RESERVE STRENGTH A/

COMPONENT/ PERSONNEL	OCT 1982	NOV 1982	DEC 1982	JAN 1983	FEB 1983	MAR 1983
TOTAL DOD	963,233	965,154	981,711	983,276	978,487	982,748
OFFICERS	135,452	135,693	137,931	138,190	137,329	137,718
ENLISTED	827,781	829,461	843,780	845,086	841,158	845,030
ARMY NATIONAL GUARD	409,019	410,070	411,321	412,925	414,039	414,752
OFFICERS	40,312	40,442	40,407	40,425	40,335	40,319
ENLISTED	368,707	369,628	370,914	372,500	373,704	374,433
ARMY RESERVE	255,740	255,480	257,356	256,379	255,903	255,773
OFFICERS	48,007	48,053	48,224	48,241	48,419	48,715
ENLISTED	207,733	207,427	209,132	208,138	207,484	207,058
NAVAL RESERVE	93,721	94,762	107,665	108,270	102,541	102,407
OFFICERS	17,933	18,116	19,724	19,999	18,907	18,910
ENLISTED	75,788	76,646	87,941	88,271	83,634	83,497
MARINE CORPS RESERVE	40,230	40,331	40,502	40,619	40,259	43,626
OFFICERS	2,916	2,942	2,973	2,986	3,007	3,073
ENLISTED	37,314	37,389	37,529	37,633	37,252	40,553
AIR NATIONAL GUARD	100,550	100,590	101,104	101,332	101,583	101,752
OFFICERS	12,370	12,188	12,594	12,510	12,518	12,548
ENLISTED	88,180	88,402	88,510	88,822	89,065	89,204
AIR FORCE RESERVE	63,973	63,921	63,763	63,751	64,162	64,438
OFFICERS	13,914	13,952	14,009	14,029	14,143	14,153
ENLISTED	50,059	49,969	49,754	49,722	50,019	50,285

A/ INCLUDES PAY GROUPS A, B, C, F, P, T, G, U, AGR (FULL-TIME ACTIVE DUTY SUPPORT PERSONNEL)

G L O S S A R Y O F T E R M S

Active Duty. Full-time duty in the active service of a uniformed service, including duty on the active list, full-time training duty, annual training duty, and attendance while in the active service, at a school designated as a service school by law or by the Secretary concerned.

Actual Strength. The number of personnel in, or projected to be in, an organization or account at a specified point in time.

Armed Forces of the United States. Includes the Army, Navy, Air Force, Marine Corps, and Coast Guard, and all components thereof.

Assigned Strength. Actual strength of an entire service, not necessarily equal to combined unit actual strengths since individuals may be assigned but not joined.

Authorized Strength. The total strength authorized by Congress (for internal Service applications only). Authorized strength may be used synonymously with documented strength as defined below.

Cadet or Midshipman Enrolled in the Reserve Officers Training Corps (ROTC) Program. A member of the Senior Reserve Officer Training Corps (SROTC) under 10 U.S.C. 2107 for tuition, fees, books, and laboratory expenses.

Continental United States. Unless otherwise qualified, means the 48 contiguous States and the District of Columbia.

Enlisted Member. A person enlisted, enrolled, or conscripted into the military service.

Enlistment. (1) A voluntary entrance into military service under enlisted status, as distinguished from induction through Selective Service.

(2) A period of time, contractual or prescribed by law, which enlisted members serve between enrollment and discharge.

Officer. A commissioned or warrant officer.

Reserve Components. The Army National Guard of the United States, Army Reserve, Naval Reserve, Marine Corps Reserve, Air National Guard of the United States, Air Force Reserve, Coast Guard Reserve, and the Reserve Corps of the Public Health Service.

Service Academy Cadet or Midshipman. A person in training at one of the service academies to become a commissioned officer.

Transients. All military members who are not available for duty while executing permanent change of station (PCS) orders. Transients shall comprise all military personnel in a travel, proceed, leave enroute, or temporary duty enroute status on PCS orders to execute an accession, separation, training, operational, or rotational move.

Warrant Officer. A person who holds a commission or warrant in a warrant officer grade.