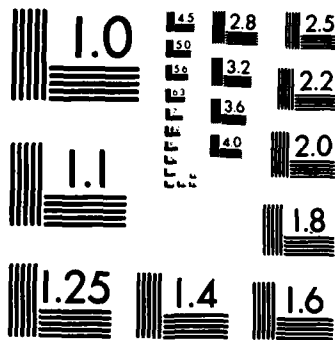


1 OF 1

AD-A153 313



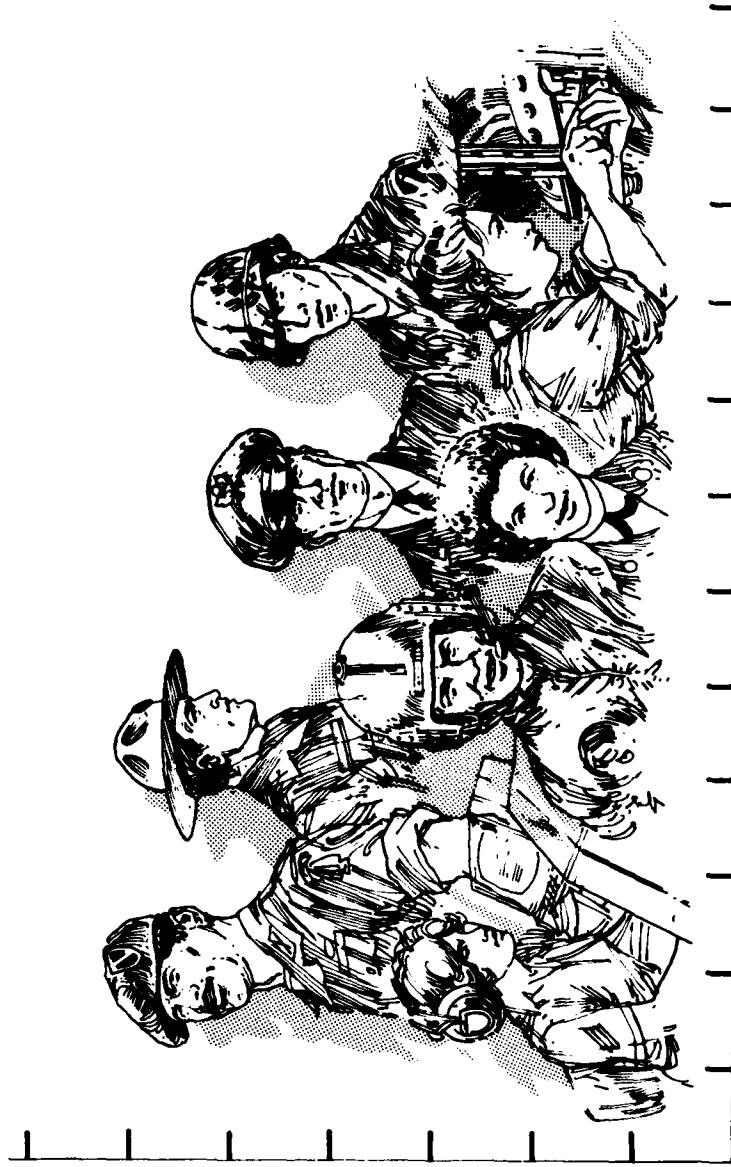
MICROCOPY RESOLUTION TEST CHART
NATIONAL BUREAU OF STANDARDS-1963-A

**THIS REPORT IS UNCLASSIFIED AND
ITS DISTRIBUTION IS UNLIMITED**



Department of Defense **MILITARY MANPOWER STATISTICS**

JULY 1983



Department of Defense

Military Manpower Statistics

July 1983

Issued Monthly by

**Washington Headquarters Services
Directorate for Information
Operations and Reports**

FOREWORD

Military Manpower Statistics (MMS) is a monthly publication prepared by the Washington Headquarters Services, Directorate for Information Operations and Reports (WHS/DIOR) of the Office of the Secretary of Defense.

The MMS report presents audited statistical data pertaining to military personnel on active duty and personnel in military reserve components, for the current fiscal year on a monthly basis. The March, June, September, and December issues contain quarterly summaries of certain military manpower data as annotated in the Table of Contents. Although these tables are revised quarterly, they are published without changes in two subsequent monthly editions of this publication. The publication is generated from a computerized data base developed and maintained by the Manpower Management Information Division of WHS/DIOR.

The report is approved for public release at cost: distribution unlimited. However, all requests for this publication and DOD-wide data contained therein should be referred to WHS/DIOR or cognizant offices in the Office of the Secretary of Defense. Questions concerning the material in this publication, and requests for additional copies, should be addressed to the Director for Information Operations and Reports, WHS, Room 1C535, The Pentagon, Washington, D.C. 20301. (When ordering please cite publication number M03.)

T A B L E O F C O N T E N T S

<u>Section 1</u>	<u>Active Duty Military Manpower Statistics</u>	<u>Page</u>
Figure 1-1	Department of Defense Active Duty Military Personnel	3
Table P10	Summary of Military Personnel	5
Table P11	Department of Defense Manpower Comparison	6
Table P22.1	Total Active Duty Military Personnel by Service	7
Table P23.1	Active Duty Officer Personnel and Percent of Total Military Personnel by Service	8
Table P23.3	Total Active Duty Military Personnel by Type	9
Table P23.4	Army Active Duty Military Personnel by Type	10
Table P23.5	Navy Active Duty Military Personnel by Type	11
Table P23.6	Marine Corps Active Duty Military Personnel by Type	12
Table P23.7	Air Force Active Duty Military Personnel by Type	13
Table P23.41	Army Active Duty Military Personnel	14
Table P23.51	Navy Active Duty Military Personnel	15
Table P23.61	Marine Corps Active Duty Military Personnel	16
Table P23.71	Air Force Active Duty Military Personnel	17
Table P25.6	Women Military Personnel on Active Duty Officers and Enlisted by Service	18

<u>Section 1</u>	<u>Active Duty Military Manpower Statistics</u>	<u>Page</u>
Table P26.0	Military Personnel on Active Duty by Grade in Which Serving	19
Table P26.02	Female Military Personnel on Active Duty by Grade in Which Serving	20
Table P26.04	Military Personnel on Active Duty by Grade in Which Serving - Regular	21
Table P26.05	Military Personnel on Active Duty by Grade in Which Serving - Reserve	22
Table P27.1	Summary of Enlisted Personnel Procurement	23
Table P27.21	Army Enlisted Personnel Procurement	25
Table P27.22	Navy Enlisted Personnel Procurement	27
Table P27.23	Marine Corps Enlisted Personnel Procurement	29
Table P27.24	Air Force Enlisted Personnel Procurement	31
*Table P29.20-29.34	Reenlistment Rates by Service	33
*Table P309A	Active Duty Military Personnel Strength by Regional Area and by Country	36

* Prepared quarterly, this table is updated in March, June, September and December.

<u>Section 2</u>	<u>Reserve Military Manpower Statistics</u>	<u>Page</u>
Table R11.0	Reserve Component Strength Summary	43
Table R12.0	Reserve Strength - Officer and Enlisted Not on Active Duty	44
Table R13.0	Ready Reserve and Active Duty Strength Compared to Statutory Limitation	45
Table R14.0	Reserve Component Personnel by Reserve Category Not on Active Duty - Total	46
Table R14.0	Reserve Component Personnel by Reserve Category Not on Active Duty - Officers	47
Table R14.0	Reserve Component Personnel by Reserve Category Not on Active Duty - Enlisted	48
Table R21.0	Reserve Personnel on Active Duty by Component	49
Table R22.0	Reserve Strength on Active Duty	50
Table R23.0	Reserve Personnel by Component and Category Not on Active Duty	51
Table R24.0	Reserve Strength Not on Active Duty	52
Table R26.5	Selected Reserve Strength	53
	Glossary of Terms	55

Section 1

ACTIVE DUTY MILITARY MANPOWER STATISTICS*

*NOTE: Excluded from all total DOD strength figures for Fiscal Year 1983 in this Section are approximately 41,000 full-time military personnel who are paid from other than active duty military personnel appropriations. This group is funded from appropriations for reserve components and Corps of Engineers civil functions.

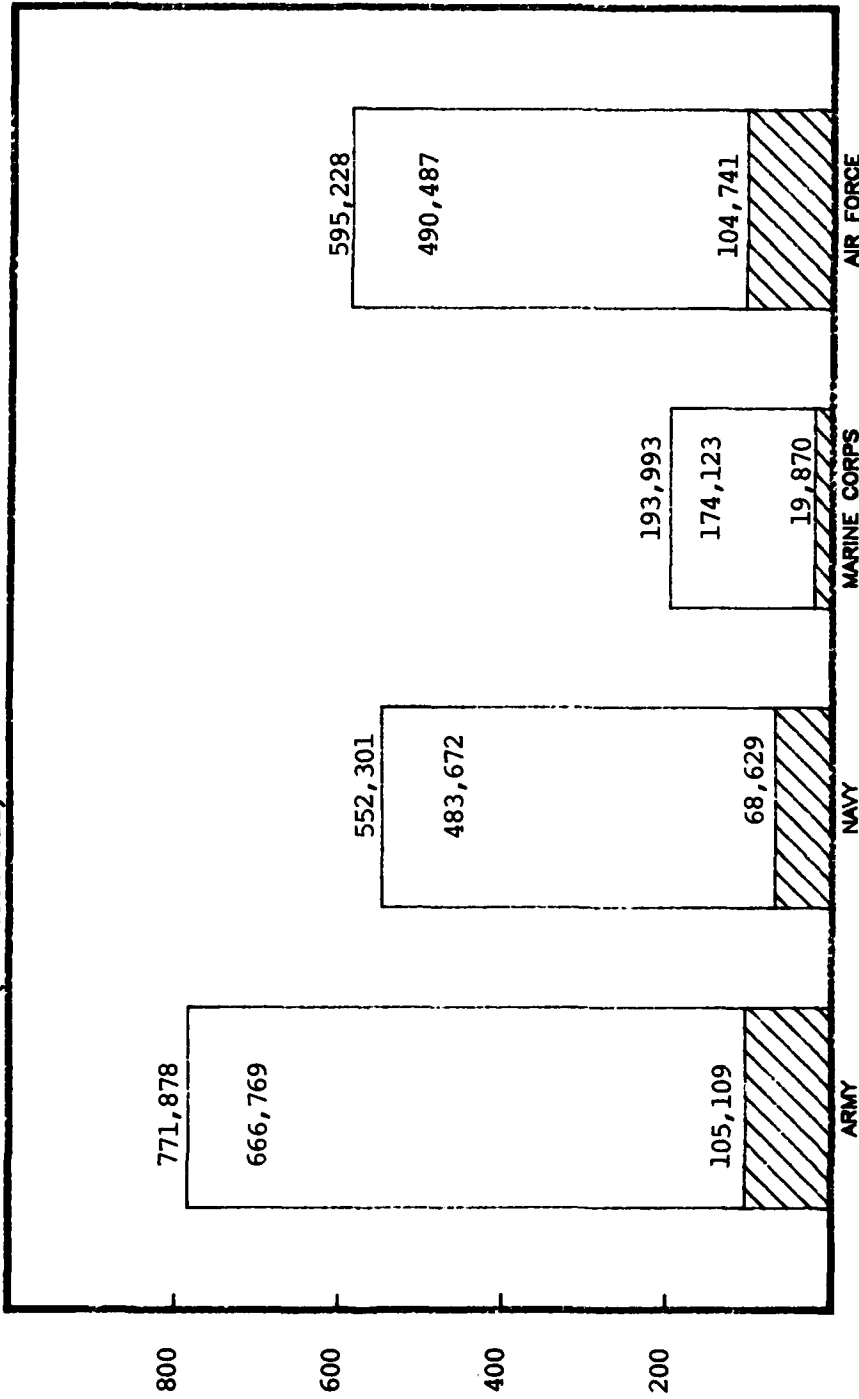
DOD ACTIVE DUTY MILITARY PERSONNEL

JULY 31, 1983

ENLISTED/
CADETS

OFFICERS

NUMBER OF PERSONNEL (IN THOUSANDS)



MILITARY SERVICE

FIGURE 1-1

TABLE P10

DEPARTMENT OF DEFENSE
SUMMARY OF MILITARY PERSONNEL

	TOTAL DOD	ARMY	NAVY	MARINE CORPS	AIR FORCE
1. ACTIVE DUTY MILITARY AS OF JUL 31 1983					
OFFICER ENLISTED ACADEMY CADETS	298,349	105,109	68,629	19,870	104,741
TOTAL ACTIVE DUTY MILITARY	1,801,603	662,052	479,480	174,123	485,948
	13,448	4,717	4,192	-	4,539
	2,113,400	771,878	552,301	193,993	595,228
2. GUARD AND RESERVES AS OF JUL 31 1983					
NATIONAL GUARD PAID STATUS	524,684	422,724	-	-	101,960
	514,044	412,203	-	-	101,841
RESERVES PAID STATUS	1,736,568	959,207	323,267	97,612	356,482
	471,040	257,056	106,774	41,227	65,983
TOTAL GUARD AND RESERVES PAID STATUS	2,261,252	1,381,931	323,267	97,612	458,442
	985,084	669,259	106,774	41,227	167,824
3. OFFICER TRAINING IN COLLEGES A/ AS OF MAY 1982					
	102,594	75,789	7,457	-	19,348

A/ EXCLUDES 191,316 IN JUNIOR DIVISION, MILITARY SCHOOLS AND NATIONAL CADETS CORPS.

TABLE P11
 OOD MANPOWER COMPARISON
 (MILITARY & CIVIL FUNCTIONS)

DATE	TOTAL OOD	ARMY			AIR FORCE			NAVY AND MARINE CORPS			OSD/JCS	
		MILT- TARY	CIVIL- IAN A/	TOTAL	MILI- TARY	CIVIL- IAN A/	TOTAL	NAVY MILI- TARY	MARINE CORPS MILI- TARY	CIVIL- IAN A/		TOTAL
OCT 31 82	3,124,005	781,295	365,146	1,146,441	584,626	241,320	825,946	547,671	194,107	327,453	1,069,231	82,387
NOV 30 82	3,137,736	783,904	367,977	1,151,881	586,314	243,103	829,417	547,908	195,880	329,869	1,073,657	82,781
JEC 31 82	3,139,984	778,580	369,211	1,147,791	587,467	243,980	831,447	550,847	195,715	331,969	1,078,031	82,715
JAN 31 83	3,143,600	780,188	367,607	1,147,795	588,749	242,427	831,176	553,329	197,558	331,525	1,082,412	82,217
FEB 28 83	3,150,275	781,650	368,814	1,150,464	590,215	242,592	832,807	551,303	198,682	334,795	1,084,780	82,224
MAR 31 83	3,157,497	781,648	371,257	1,152,905	591,931	242,888	834,819	555,269	198,574	333,957	1,087,800	81,973
APR 30 83	3,152,367	779,034	372,585	1,151,619	592,017	241,539	833,556	553,954	198,050	333,432	1,085,436	81,756
MAY 31 83	3,159,888	776,720	377,983	1,154,703	593,459	243,141	836,600	552,755	196,665	336,803	1,086,223	82,362
JUN 30 83	3,165,057	771,808	387,166	1,158,974	593,958	247,753	841,711	554,133	195,770	338,648	1,088,551	75,821
JUL 31 83	3,166,702	771,878	389,799	1,161,677	595,228	249,018	844,246	552,301	193,993	338,743	1,085,037	75,742

A/ *TOTAL PAID EMPLOYEES* AS REPORTED OFFICIALLY TO THE OFFICE OF PERSONNEL
 MANAGEMENT; EXCLUDES OVERSEAS SUPPORT PERSONNEL (INDIRECT HIRE).

B/ CIVILIAN PERSONNEL ONLY. MILITARY PERSONNEL ASSIGNED TO OSD, OJCS AND OTHER
 DEFENSE ACTIVITIES ARE REPORTED BY THEIR RESPECTIVE SERVICES.

TABLE P22.1

DEPARTMENT OF DEFENSE
TOTAL ACTIVE DUTY MILITARY PERSONNEL BY SERVICE

DATE	TOTAL DOD	ARMY	NAVY	MARINE CORPS	AIR FORCE
OCT 31 1982	2,107,699	781,295	547,671	194,107	584,626
NOV 30 1982	2,114,006	783,904	547,908	195,880	586,314
DEC 31 1982	2,112,609	778,580	550,847	195,715	587,467
JAN 31 1983	2,119,824	780,188	553,329	197,558	588,749
FEB 28 1983	2,121,850	781,650	551,303	198,682	590,215
MAR 31 1983	2,127,422	781,648	555,269	198,574	591,931
APR 30 1983	2,123,055	779,034	553,954	198,050	592,017
MAY 31 1983	2,119,599	776,720	552,755	196,689	593,459
JUN 30 1983	2,115,669	771,808	554,133	195,770	593,958
JUL 31 1983	2,113,400	771,878	552,301	193,993	595,228

TABLE P23.1

DEPARTMENT OF DEFENSE
ACTIVE DUTY OFFICER PERSONNEL AND PERCENT OF TOTAL MILITARY PERSONNEL, BY SERVICE

DATE	TOTAL DOD		ARMY		NAVY		MARINE CORPS		AIR FORCE	
	NUMBER	%	NUMBER	%	NUMBER	%	NUMBER	%	NUMBER	%
OCT 31 1982	290,847	13.8	103,232	13.2	66,365	12.1	18,922	9.7	102,328	17.5
NOV 30 1982	291,369	13.8	103,247	13.2	66,622	12.2	18,866	9.6	102,634	17.5
DEC 31 1982	291,693	13.8	103,151	13.2	66,548	12.1	19,238	9.8	102,756	17.5
JAN 31 1983	292,414	13.8	103,448	13.3	66,560	12.0	19,364	9.8	103,042	17.5
FEB 28 1983	292,764	13.8	103,312	13.2	66,846	12.1	19,427	9.8	103,179	17.5
MAR 31 1983	293,026	13.8	103,296	13.2	67,062	12.1	19,404	9.8	103,264	17.4
APR 30 1983	293,592	13.8	103,356	13.3	66,997	12.1	19,643	9.9	103,596	17.5
MAY 31 1983	296,217	14.0	104,684	13.5	68,092	12.3	19,717	10.0	103,724	17.5
JUN 30 1983	298,567	14.1	105,105	13.6	68,924	12.4	19,936	10.2	104,602	17.6
JUL 31 1983	298,349	14.1	105,109	13.6	68,629	12.4	19,870	10.2	104,741	17.6

TABLE P23.3

DEPARTMENT OF DEFENSE
TOTAL ACTIVE DUTY MILITARY PERSONNEL BY TYPE

DATE	TOTAL	OFFICERS	ENLISTED	A/ OFFICER CANDIDATES
OCT 31 1982	2,107,699	290,847	1,803,409	13,443
NOV 30 1982	2,114,006	291,369	1,809,240	13,397
DEC 31 1982	2,112,609	291,693	1,807,613	13,303
JAN 31 1983	2,119,824	292,414	1,814,190	13,220
FEB 28 1983	2,121,850	292,764	1,815,980	13,106
MAR 31 1983	2,127,422	293,026	1,821,315	13,081
APR 30 1983	2,123,055	293,592	1,816,533	12,930
MAY 31 1983	2,119,599	296,217	1,812,463	10,919
JUN 30 1983	2,115,669	298,567	1,807,251	9,851
JUL 31 1983	2,113,400	298,349	1,801,603	13,448

A/ CONSISTS OF THE FOLLOWING:
FOR ARMY - CADETS, U. S. MILITARY ACADEMY
FOR NAVY - MIDSHIPMEN, U. S. NAVAL ACADEMY
FOR AIR FORCE - CADETS, U. S. AIR FORCE ACADEMY

TABLE P23.4

DEPARTMENT OF DEFENSE		ARMY ACTIVE DUTY MILITARY PERSONNEL BY TYPE			CADETS
DATE	TOTAL	OFFICERS	ENLISTED	U.S. MILITARY	ACADEMY
OCT 31 1982	781,295	103,232	673,600	4,463	
NOV 30 1982	783,204	103,247	676,223	4,434	
DEC 31 1982	778,580	103,151	671,033	4,396	
JAN 31 1983	780,188	103,448	672,355	4,385	
FEB 28 1983	781,650	103,312	674,009	4,329	
MAR 31 1983	781,648	103,296	674,028	4,324	
APR 30 1983	779,034	103,356	671,397	4,281	
MAY 31 1983	776,720	104,684	668,660	3,376	
JUN 30 1983	771,808	105,105	663,394	3,309	
JUL 31 1983	771,878	105,109	662,052	4,717	

TABLE P23.5

DEPARTMENT OF DEFENSE
NAVY ACTIVE DUTY MILITARY PERSONNEL BY TYPE

DATE	TOTAL	OFFICERS	ENLISTED	MIDSHIPMEN U.S. NAVAL ACADEMY
OCT 31 1982	547,671	66,365	476,768	4,538
NOV 30 1982	547,908	66,622	476,754	4,532
DEC 31 1982	550,847	66,548	479,766	4,533
JAN 31 1983	553,329	66,560	482,241	4,528
FEB 28 1983	551,303	66,846	479,929	4,528
MAR 31 1983	555,269	67,062	483,680	4,527
APR 30 1983	553,954	66,997	482,511	4,446
MAY 31 1983	552,755	68,092	481,286	3,377
JUN 30 1983	554,133	68,924	481,833	3,376
JUL 31 1983	552,301	68,629	479,480	4,192

TABLE P23.6
 DEPARTMENT OF DEFENSE
 MARINE CORPS ACTIVE DUTY MILITARY PERSONNEL BY TYPE

DATE	TOTAL	OFFICERS	ENLISTED
OCT 31 1982	194,107	18,922	175,185
NOV 30 1982	195,880	18,866	177,014
DEC 31 1982	195,715	19,238	176,477
JAN 31 1983	197,558	19,364	178,194
FEB 28 1983	198,682	19,427	179,255
MAR 31 1983	198,574	19,404	179,170
APR 30 1983	198,050	19,643	178,407
MAY 31 1983	196,665	19,717	176,948
JUN 30 1983	195,770	19,936	175,834
JUL 31 1983	193,993	19,870	174,123

TABLE P23.7

DEPARTMENT OF DEFENSE
AIR FORCE ACTIVE DUTY MILITARY PERSONNEL BY TYPE

DATE	TOTAL	OFFICERS	ENLISTED	CADETS U.S.A.F. ACADEMY
OCT 31 1982	584,626	102,328	477,856	4,442
NOV 30 1982	586,314	102,634	479,249	4,431
DEC 31 1982	587,467	102,756	480,337	4,374
JAN 31 1983	588,749	103,042	481,400	4,307
FEB 28 1983	590,215	103,179	482,787	4,249
MAR 31 1983	591,931	103,264	484,437	4,230
APR 30 1983	592,017	103,596	484,218	4,203
MAY 31 1983	593,459	103,724	485,569	4,166
JUN 30 1983	593,958	104,602	486,190	3,166
JUL 31 1983	595,228	104,741	485,948	4,539

TABLE P23.41

DEPARTMENT OF DEFENSE
ARMY ACTIVE DUTY MILITARY PERSONNEL

REPORTED STRENGTH, AND ADJUSTMENTS TO REPORTED STRENGTH TO DERIVE DIRECT PROGRAM STRENGTH CHARGEABLE TO APPROPRIATION "MILITARY PERSONNEL, ARMY"

DATE	REPORTED STRENGTH		(LESS) REIMBURSABLES		DIRECT PROGRAM STRENGTH CHARGEABLE TO APPROPRIATION "MILITARY PERSONNEL, ARMY"		CADETS USMA	
	TOTAL	ENLISTED	OFFICER	ENLISTED	TOTAL	OFFICER	ENLISTED	USMA
OCT 31 1982	781,295	269	469	269	780,557	102,763	673,331	4,463
NOV 30 1982	783,904	264	466	264	783,174	102,781	675,959	4,434
DEC 31 1982	778,580	274	462	274	777,844	102,689	670,759	4,396
JAN 31 1983	780,188	293	467	293	779,428	102,981	672,062	4,385
FEB 28 1983	781,650	304	475	304	780,871	102,837	673,705	4,329
MAR 31 1983	781,648	306	474	306	780,868	102,822	673,722	4,324
APR 30 1983	779,034	314	470	314	778,250	102,886	671,083	4,281
MAY 31 1983	776,720	314	449	314	775,957	104,235	668,346	3,376
JUN 30 1983	771,808	314	442	314	771,052	104,663	663,080	3,309
JUL 31 1983	771,878	306	431	306	771,141	104,678	661,746	4,717

TABLE P23.51

DEPARTMENT OF DEFENSE
NAVY ACTIVE DUTY MILITARY PERSONNEL

REPORTED STRENGTH, AND ADJUSTMENTS TO REPORTED STRENGTH TO DERIVE DIRECT PROGRAM STRENGTH CHARGEABLE TO APPROPRIATION "MILITARY PERSONNEL, NAVY"

DATE	REPORTED STRENGTH	(LESS) REIMBURSABLES	TOTAL	OFFICER ENLISTED	TOTAL	OFFICER	ENLISTED	OFFICER CANDIDATES
OCT 31 1982	547,671	414	546,227	1,030	546,227	65,951	475,738	4,538
NOV 30 1982	547,908	414	546,459	1,035	546,459	66,208	475,719	4,532
DEC 31 1982	550,847	414	549,371	1,062	549,371	66,134	478,704	4,533
JAN 31 1983	553,329	429	551,813	1,087	551,813	66,131	481,154	4,528
FEB 28 1983	551,303	427	549,785	1,091	549,785	66,419	478,838	4,527
MAR 31 1983	555,269	424	553,740	1,105	553,740	66,638	482,575	4,446
APR 30 1983	553,954	425	552,431	1,098	552,431	66,572	481,413	4,446
MAY 31 1983	552,755	422	551,230	1,103	551,230	67,670	480,183	3,377
JUN 30 1983	554,133	435	552,583	1,115	552,583	68,489	480,718	3,376
JUL 31 1983	552,301	429	550,762	1,110	550,762	68,200	478,370	4,192

TABLE P23.61

DEPARTMENT OF DEFENSE
MARINE CORPS ACTIVE DUTY MILITARY PERSONNEL

REPORTED STRENGTH, AND ADJUSTMENTS TO REPORTED STRENGTH TO DERIVE DIRECT PROGRAM STRENGTH CHARGEABLE TO APPROPRIATION "MILITARY PERSONNEL, MARINE CORPS"

DATE	REPORTED STRENGTH	(LESS) REIMBURSABLES	DIRECT PROGRAM STRENGTH CHARGEABLE TO APPN. "MILITARY PERSONNEL, MARINE CORPS"
OCT 31 1982	194,107	26	194,077
NOV 30 1982	195,880	26	195,850
DEC 31 1982	195,715	26	195,686
JAN 31 1983	197,558	25	197,530
FEB 28 1983	198,682	25	198,654
MAR 31 1983	198,574	25	198,546
APR 30 1983	198,050	25	198,022
MAY 31 1983	196,665	25	196,637
JUN 30 1983	195,770	25	195,742
JUL 31 1983	193,993	26	193,967

OFFICER ENLISTED	TOTAL	OFFICER	ENLISTED	OFFICER CANDIDATES
4	194,077	18,896	175,181	-
4	195,850	18,840	177,010	-
3	195,686	19,212	176,474	-
3	197,530	19,339	178,191	-
3	198,654	19,402	179,252	-
3	198,546	19,379	179,167	-
3	198,022	19,618	178,404	-
3	196,637	19,692	176,945	-
3	195,742	19,911	175,831	-
3	193,967	19,844	174,123	-

TABLE P23.71

DEPARTMENT OF DEFENSE
AIR FORCE ACTIVE DUTY MILITARY PERSONNEL

REPORTED STRENGTH, AND ADJUSTMENTS TO REPORTED STRENGTH TO DERIVE "DIRECT PROGRAM STRENGTH"
CHARGEABLE TO APPROPRIATION "MILITARY PERSONNEL, AIR FORCE"

DATE	REPORTED STRENGTH	(LESS)		DIRECT PROGRAM STRENGTH CHARGEABLE TO		USAF &	
		OFFICER	ENLISTED	APPROP. "MILITARY PERSONNEL, AIR FORCE"	ENLISTED	AVCADS	
OCT 31 1982	584,626	-	-	584,626	102,328	477,856	4,442
NOV 30 1982	586,314	-	-	586,314	102,634	479,249	4,431
DEC 31 1982	587,467	-	-	587,467	102,756	480,337	4,374
JAN 31 1983	588,749	-	-	588,749	103,042	481,400	4,307
FEB 28 1983	590,215	-	-	590,215	103,179	482,787	4,249
MAR 31 1983	591,931	-	-	591,931	103,264	484,437	4,230
APR 30 1983	592,017	-	-	592,017	103,596	484,218	4,203
MAY 31 1983	593,459	-	-	593,459	103,724	485,569	4,166
JUN 30 1983	593,958	-	-	593,958	104,602	486,190	3,166
JUL 31 1983	595,228	-	-	595,228	104,741	485,948	4,539

TABLE P25.6

DEPARTMENT OF DEFENSE
FEMALE MILITARY PERSONNEL ON ACTIVE DUTY, OFFICERS, AND ENLISTED BY SERVICE

DATE	TOTAL DOD				ARMY				NAVY				MARINE CORPS				AIR FORCE					
	TOTAL		ENL AND OFF CAND		TOTAL		OFF		ENL		TOTAL		OFF		ENL		TOTAL		OFF		ENL	
OCT 31 82	189,515	25,507	164,008	72,260	9,029	63,231	43,836	5,786	38,050	8,556	564	7,992	64,863	10,128	54,735							
NOV 30 92	192,750	25,703	167,047	74,792	9,097	65,695	44,113	5,843	38,270	8,164	558	8,089	65,198	10,205	54,993							
DEC 31 82	193,062	25,739	167,323	74,358	9,079	65,279	44,673	5,833	38,840	8,586	586	8,000	65,445	10,241	55,204							
JAN 31 83	195,056	25,919	169,137	75,519	9,129	66,390	45,213	5,880	39,333	8,682	593	8,089	65,642	10,317	55,325							
FEB 28 83	195,768	25,973	169,795	75,965	9,104	66,861	45,127	5,965	39,162	8,808	596	8,212	65,868	10,308	55,560							
MAR 31 83	196,869	26,034	170,835	76,162	9,096	67,066	45,914	6,014	39,900	8,810	595	8,215	65,996	10,329	55,654							
APR 30 83	197,060	26,091	170,969	76,101	9,135	66,966	46,087	5,996	40,091	8,876	594	8,282	65,996	10,365	55,630							
MAY 31 83	197,138	26,281	170,857	75,944	9,291	66,653	46,346	6,056	40,290	8,860	596	8,264	65,988	10,338	55,650							
JUN 30 83	197,341	26,638	170,703	75,684	9,367	66,317	46,667	6,207	40,460	8,912	605	8,307	66,078	10,459	55,619							
JUL 31 83	197,229	26,803	170,426	75,414	9,395	66,019	46,664	6,214	40,450	8,878	620	8,258	66,273	10,574	55,699							

TABLE P26.0

DEPARTMENT OF DEFENSE
MILITARY PERSONNEL ON ACTIVE DUTY BY GRADE IN WHICH SERVING

JULY 31, 1983

RANK/GRADE	TOTAL 000	ARMY	NAVY	MARINE CORPS	AIR FORCE
GENERAL - ADMIRAL	34	-	8	-	-
LT GENERAL - VICE ADMIRAL	129	51	34	7	12
MAJ GENERAL - REAR ADMIRAL (U)	355	136	77	23	37
BRIG GENERAL - REAR ADMIRAL (L) A/	528	196	129	33	119
COLONEL - CAPTAIN	14,435	4,683	3,736	591	5,425
LIEUTENANT COL - COMMANDER	32,507	10,736	7,538	1,595	12,638
MAJOR - LT COMMANDER	51,209	16,531	12,575	3,053	19,050
CAPTAIN - LIEUTENANT	97,065	33,538	20,589	5,292	37,646
1st LIEUTENANT - LIEUTENANT (J6)	45,473	14,112	10,706	4,800	15,855
2nd LIEUTENANT - ENSIGN	37,505	10,400	10,254	3,062	13,789
CHIEF WARRANT OFFICER W-4	2,297	1,543	619	135	-
CHIEF WARRANT OFFICER W-3	5,809	4,354	1,282	173	-
CHIEF WARRANT OFFICER W-2	7,405	5,762	1,082	561	-
WARRANT OFFICER W-1	3,598	3,055	-	543	-
TOTAL OFFICERS	298,349	105,109	68,629	19,870	104,741
E-9	13,777	4,054	3,707	1,260	4,756
E-8	37,441	15,263	8,697	3,751	9,730
E-7	120,649	49,592	26,618	8,975	35,464
E-6	223,138	82,192	70,198	15,192	55,556
E-5	347,965	118,338	96,928	27,411	105,288
E-4	405,145	172,932	96,339	31,489	104,385
E-3	379,652	112,122	97,205	44,685	125,640
E-2	149,158	51,304	45,940	27,491	24,423
E-1	124,678	56,255	33,848	13,869	20,706
TOTAL ENLISTED	1,801,603	662,052	479,480	174,123	485,948
CADETS & MIDSHIPMEN	13,448	4,717	4,192	-	4,539
GRAND TOTAL	2,113,400	771,878	552,301	193,993	595,228

A/ INCLUDES THE NEWLY REESTABLISHED RANK OF COMMODORE.

TABLE P26.02

DEPARTMENT OF DEFENSE
FEMALE MILITARY PERSONNEL ON ACTIVE DUTY BY GRADE IN WHICH SERVING

JULY 31, 1983

RANK/GRADE	TOTAL DOD	ARMY	NAVY	MARINE CORPS	AIR FORCE
GENERAL - ADMIRAL	-	-	-	-	-
LT GENERAL - VICE ADMIRAL	-	-	-	-	-
MAJ GENERAL - REAR ADMIRAL(U)	1	-	1	-	-
BRIG GENERAL - REAR ADMIRAL(L) A/	6	2	1	-	3
COLONEL - CAPTAIN	255	85	89	5	76
LIEUTENANT COL - COMMANDER	968	302	294	32	340
MAJOR - LT COMMANDER	3,073	1,080	1,034	59	900
CAPTAIN - LIEUTENANT	10,792	3,883	2,358	148	4,403
1st LIEUTENANT - LIEUTENANT (JG)	6,507	2,242	1,292	193	2,780
2nd LIEUTENANT - ENSIGN	4,980	1,615	1,145	148	2,072
CHIEF WARRANT OFFICER W-4	4	1	-	3	-
CHIEF WARRANT OFFICER W-3	13	9	-	4	-
CHIEF WARRANT OFFICER W-2	116	103	-	13	-
WARRANT OFFICER W-1	88	73	-	15	-
TOTAL OFFICERS	26,803	9,395	6,214	620	10,574
E-9	47	17	8	9	13
E-8	227	126	43	29	29
E-7	1,662	1,032	248	131	251
E-6	8,925	4,130	2,541	422	1,832
E-5	34,230	12,099	8,656	1,615	11,860
E-4	54,563	23,555	9,930	2,012	19,066
E-3	44,088	13,961	11,810	2,188	16,129
E-2	13,741	5,251	3,944	1,293	3,253
E-1	11,675	5,337	3,051	559	2,728
TOTAL ENLISTED	169,158	65,508	40,231	8,258	55,161
CADETS & MIDSHPMEN	1,268	511	219	-	538
GRAND TOTAL	197,229	75,414	46,664	8,878	66,273

A/ INCLUDES THE NEWLY REESTABLISHED RANK OF COMMODORE.

TABLE P26.04

DEPARTMENT OF DEFENSE
MILITARY PERSONNEL ON ACTIVE DUTY BY GRADE IN WHICH SERVING

REGULAR A/

JULY 31, 1983

RANK/GRADE	TOTAL DOD	ARMY	NAVY	MARINE CORPS	AIR FORCE
GENERAL - ADMIRAL	34	12	8	2	12
LT GENERAL - VICE ADMIRAL	127	49	34	7	37
MAJ GENERAL - REAR ADMIRAL (U)	352	134	77	22	119
BRIG GENERAL - REAR ADMIRAL (L) B/	526	194	129	33	170
COLONEL - CAPTAIN	14,014	4,544	3,656	584	5,230
LIEUTENANT COL - COMMANDER	30,617	9,871	7,219	1,568	11,959
MAJOR - LT COMMANDER	44,841	13,592	11,446	2,985	16,818
CAPTAIN - LIEUTENANT	57,338	13,303	14,841	4,633	24,561
1st LIEUTENANT - LIEUTENANT (J6)	16,196	5,402	5,162	2,486	3,146
2nd LIEUTENANT - ENSIGN	10,687	4,019	3,903	830	1,935
CHIEF WARRANT OFFICER W-4	1,953	1,215	605	133	-
CHIEF WARRANT OFFICER W-3	3,894	2,457	1,269	168	-
CHIEF WARRANT OFFICER W-2	2,444	818	1,408	558	-
WARRANT OFFICER W-1	549	6	-	543	-
TOTAL OFFICERS	183,572	55,616	49,417	14,552	63,987
E-3	13,724	4,052	3,667	1,250	4,755
E-8	37,293	15,251	8,595	3,729	9,718
E-7	120,166	49,562	26,239	8,914	35,451
E-6	222,285	82,173	69,460	15,120	55,532
E-5	344,940	118,324	94,434	26,952	105,230
E-4	399,107	172,923	90,438	31,439	104,307
E-3	363,869	112,069	82,301	44,655	124,844
E-2	137,317	51,238	34,682	27,457	23,940
E-1	111,394	55,875	25,812	13,837	15,870
TOTAL ENLISTED	1,750,095	661,467	435,628	173,353	479,647
REGULAR TOTAL	1,933,667	717,083	485,045	187,905	543,634

A/ REGULAR PLUS RETIRED REGULAR OFFICERS ON ACTIVE DUTY.

B/ INCLUDES THE NEWLY REESTABLISHED RANK OF COMMODORE.

TABLE P26.05

DEPARTMENT OF DEFENSE
MILITARY PERSONNEL ON ACTIVE DUTY BY GRADE IN WHICH SERVING

RESERVE A/

JULY 31, 1983

RANK/GRADE	TOTAL DOD	ARMY	NAVY	MARINE CORPS	AIR FORCE
GENERAL - ADMIRAL	-	-	-	-	-
LT GENERAL - VICE ADMIRAL	2	2	-	-	-
MAJ GENERAL - REAR ADMIRAL(U)	3	2	-	1	-
BRIG GENERAL - REAR ADMIRAL(L) B/	2	2	-	-	-
COLONEL - CAPTAIN	421	139	80	7	195
LIEUTENANT COL - COMMANDER	1,890	865	319	27	679
MAJOR - LT COMMANDER	6,368	2,939	1,129	68	2,232
CAPTAIN - LIEUTENANT	39,727	20,235	5,748	659	13,085
1st LIEUTENANT - LIEUTENANT (JG)	29,277	8,710	5,544	2,314	12,709
2nd LIEUTENANT - ENSIGN	26,818	6,381	6,351	2,232	11,854
CHIEF WARRANT OFFICER W-4	344	328	14	2	-
CHIEF WARRANT OFFICER W-3	1,915	1,897	13	5	-
CHIEF WARRANT OFFICER W-2	4,961	4,944	14	3	-
WARRANT OFFICER W-1	3,049	3,049	-	-	-
TOTAL OFFICERS	114,777	49,493	19,212	5,318	40,754
E-9	53	2	40	10	1
E-8	148	12	102	22	12
E-7	483	30	379	61	13
E-6	853	19	738	72	24
E-5	3,025	14	2,494	459	58
E-4	6,038	9	5,901	50	78
E-3	15,783	53	14,904	30	796
E-2	11,841	66	11,258	34	483
E-1	13,284	380	8,036	32	4,836
TOTAL ENLISTED	51,508	585	43,852	770	6,301
RESERVE TOTAL	166,285	50,078	63,064	6,088	41,055

A/ INCLUDES RESERVE, NATIONAL GUARD, AUS, AND AFUS OFFICERS ON ACTIVE DUTY.
B/ INCLUDES THE NEWLY REESTABLISHED RANK OF COMMODORE.

TABLE P27.1

DEPARTMENT OF DEFENSE
SUMMARY OF ENLISTED PERSONNEL PROCUREMENT
FISCAL YEAR 1983

	OCT 1982	NOV 1982	DEC 1982	JAN 1983	FEB 1983	MAR 1983
TOTAL DEPARTMENT OF DEFENSE	56,164	45,760	41,504	44,445	42,911	55,739
INDUCTIONS	-	-	-	-	-	-
FIRST ENLISTMENTS	32,960	25,024	19,632	24,641	22,275	27,560
IMMEDIATE REENLISTMENTS	16,229	16,620	18,590	15,269	17,111	23,444
OTHER REENLISTMENTS	3,956	2,645	1,835	2,468	2,268	2,631
RESERVES TO ACTIVE DUTY A/	3,019	1,471	1,447	2,067	1,257	2,104
ARMY	22,106	19,912	13,273	17,709	19,888	20,702
INDUCTIONS	-	-	-	-	-	-
FIRST ENLISTMENTS	13,475	11,907	6,125	9,701	11,776	12,341
IMMEDIATE REENLISTMENTS	6,921	6,589	6,584	6,894	6,795	7,251
OTHER REENLISTMENTS	1,664	1,268	525	1,046	1,267	1,011
RESERVES TO ACTIVE DUTY	46	148	39	68	50	99
NAVY	16,657	9,509	10,897	10,741	7,844	12,865
INDUCTIONS	-	-	-	-	-	-
FIRST ENLISTMENTS	9,238	4,264	5,657	5,824	2,645	6,968
IMMEDIATE REENLISTMENTS	3,188	3,270	3,091	2,253	3,641	2,908
OTHER REENLISTMENTS	1,489	708	815	807	448	1,071
RESERVES TO ACTIVE DUTY	2,742	1,267	1,334	1,857	1,110	1,918
MARINE CORPS	7,049	5,246	4,875	5,454	4,597	3,911
INDUCTIONS	-	-	-	-	-	-
FIRST ENLISTMENTS	4,756	3,591	2,609	3,856	2,934	2,272
IMMEDIATE REENLISTMENTS	1,757	1,290	1,991	1,158	1,335	1,395
OTHER REENLISTMENTS	336	316	210	311	239	167
RESERVES TO ACTIVE DUTY	200	49	65	129	89	77
AIR FORCE	10,352	11,093	12,459	10,541	10,582	18,261
INDUCTIONS	-	-	-	-	-	-
FIRST ENLISTMENTS	5,491	5,262	5,241	5,260	4,920	5,979
IMMEDIATE REENLISTMENTS	4,363	5,471	6,924	4,964	5,340	11,890
OTHER REENLISTMENTS	467	353	285	304	314	362
RESERVES TO ACTIVE DUTY	31	7	9	13	8	10

A/ INCLUDES NATIONAL GUARD.

TABLE P27.1

DEPARTMENT OF DEFENSE
SUMMARY OF ENLISTED PERSONNEL PROCUREMENT
FISCAL YEAR 1983

	APR 1983	MAY 1983	JUN 1983	JUL 1983	AUG 1983	SEP 1983
TOTAL DEPARTMENT OF DEFENSE	41,844	37,388	41,339	51,029		
INDUCTIONS	-	-	-	-	-	-
FIRST ENLISTMENTS	19,571	19,338	21,567	28,042		
IMMEDIATE REENLISTMENTS	19,197	15,482	16,767	19,133		
OTHER REENLISTMENTS	1,785	1,227	1,175	1,334		
RESERVES TO ACTIVE DUTY A/	1,291	1,341	1,830	2,520		
ARMY	17,053	14,898	14,897	21,868		
INDUCTIONS	-	-	-	-	-	-
FIRST ENLISTMENTS	8,399	8,108	7,601	12,891		
IMMEDIATE REENLISTMENTS	7,875	6,361	6,542	7,758		
OTHER REENLISTMENTS	746	360	720	974		
RESERVES TO ACTIVE DUTY	33	69	34	245		
NAVY	9,768	8,391	10,324	12,909		
INDUCTIONS	-	-	-	-	-	-
FIRST ENLISTMENTS	4,070	3,803	5,176	6,377		
IMMEDIATE REENLISTMENTS	3,769	2,901	3,319	4,514		
OTHER REENLISTMENTS	753	575	293	167		
RESERVES TO ACTIVE DUTY	1,176	1,112	1,536	1,851		
MARINE CORPS	3,051	3,266	4,969	5,092		
INDUCTIONS	-	-	-	-	-	-
FIRST ENLISTMENTS	1,948	2,050	3,681	3,801		
IMMEDIATE REENLISTMENTS	948	922	952	1,006		
OTHER REENLISTMENTS	86	143	87	118		
RESERVES TO ACTIVE DUTY	69	151	249	167		
AIR FORCE	11,972	10,833	11,149	11,160		
INDUCTIONS	-	-	-	-	-	-
FIRST ENLISTMENTS	5,154	5,377	5,109	4,973		
IMMEDIATE REENLISTMENTS	6,605	5,298	5,954	5,855		
OTHER REENLISTMENTS	200	149	75	75		
RESERVES TO ACTIVE DUTY	13	9	11	257		

A/ INCLUDES NATIONAL GUARD.

TABLE P27.21

DEPARTMENT OF DEFENSE
ARMY ENLISTED PERSONNEL PROCUREMENT
FISCAL YEAR 1983

	OCT 1982	NOV 1982	DEC 1982	JAN 1983	FEB 1983	MAR 1983
TOTAL	22,106	19,912	13,273	17,709	19,888	20,702
REGULAR ENL. AND REENL. - TOTAL	22,060	19,764	13,234	17,641	19,838	20,603
FIRST ENLISTMENTS	13,475	11,907	6,125	9,701	11,776	12,341
REENLISTMENTS - TOTAL	8,585	7,857	7,109	7,940	8,062	8,262
IMMEDIATE REENLISTMENTS	6,921	6,589	6,584	6,894	6,795	7,251
FORMER REGULAR	6,921	6,588	6,584	6,893	6,795	7,250
FORMER RESERVE & N.G.	-	1	-	1	-	1
FORMER INDUCTEE	-	-	-	-	-	-
REENL. OTHER THAN IMMEDIATE	1,664	1,268	525	1,046	1,267	1,011
WITHIN 2-90 DAYS AFTER SEPARATION	164	94	48	55	48	32
FORMER REGULAR	7	9	8	11	8	6
FORMER RESERVE & N.G.	141	78	35	41	33	21
FORMER INDUCTEE	8	5	2	1	6	3
FORMER OFFICER	8	2	3	2	1	2
OVER 90 DAYS AFTER SEPARATION	1,500	1,174	477	991	1,219	979
RESERVES AND N.G. CALLS	46	148	39	68	50	99

TABLE P27.21

DEPARTMENT OF DEFENSE
ARMY ENLISTED PERSONNEL PROCUREMENT
FISCAL YEAR 1983

	APR 1983	MAY 1983	JUN 1983	JUL 1983	AUG 1983	SEP 1983
TOTAL	17,053	14,898	14,897	21,868		
REGULAR ENL. AND REENL. - TOTAL	17,020	14,829	14,863	21,623		
FIRST ENLISTMENTS	8,399	8,108	7,601	12,891		
REENLISTMENTS - TOTAL	8,621	6,721	7,262	8,732		
IMMEDIATE REENLISTMENTS	7,875	6,361	6,542	7,758		
FORMER REGULAR FORMER RESERVE & N.G. FORMER INDUCTEE	7,874 1 -	6,361 - -	6,542 - -	7,758 - -		
REENL. OTHER THAN IMMEDIATE	746	360	720	974		
WITHIN 2-90 DAYS AFTER SEPARATION	20	11	26	35		
FORMER REGULAR FORMER RESERVE & N.G. FORMER INDUCTEE FORMER OFFICER	5 13 1 1	3 9 1 1	3 20 1 2	4 29 1 1		
OVER 90 DAYS AFTER SEPARATION	726	349	694	939		
RESERVES AND N.G. CALLS	33	69	34	245		

TABLE P27-22

DEPARTMENT OF DEFENSE
NAVY ENLISTED PERSONNEL PROCUREMENT
FISCAL YEAR 1983

	OCT 1982	NOV 1982	DEC 1982	JAN 1983	FEB 1983	MAR 1983
TOTAL	16,657	9,509	10,897	10,741	7,844	12,865
REGULAR ENL. AND REENL. - TOTAL	13,915	8,242	9,563	8,884	6,734	10,947
FIRST ENLISTMENTS	9,238	4,264	5,657	5,824	2,645	6,968
REENLISTMENTS - TOTAL	4,677	3,978	3,906	3,060	4,089	3,979
IMMEDIATE REENLISTMENTS	3,188	3,270	3,091	2,253	3,641	2,908
FORMER REGULAR	3,093	3,075	2,837	2,071	3,344	2,651
FORMER RESERVE	95	195	254	182	297	257
REENL. OTHER THAN IMMEDIATE	1,489	708	815	807	448	1,071
WITHIN 2-90 DAYS AFTER SEPARATION	311	126	138	114	83	173
FORMER REGULAR	311	126	138	114	83	173
FORMER RESERVE	-	-	-	-	-	-
OVER 90 DAYS AFTER SEPARATION	1,178	582	677	693	365	898
RESERVES TO ACTIVE DUTY	2,742	1,267	1,334	1,857	1,110	1,918
FIRST ENLISTMENTS	-	-	-	-	-	-
REENLISTMENTS	179	95	148	113	195	145
REPORTED TO ACTIVE DUTY	2,563	1,172	1,186	1,744	915	1,773

TABLE P27.22

DEPARTMENT OF DEFENSE
NAVY ENLISTED PERSONNEL PROCUREMENT
FISCAL YEAR 1983

	APR 1983	MAY 1983	JUN 1983	JUL 1983	AUG 1983	SEP 1983
TOTAL	9,768	8,391	10,324	12,909		
REGULAR EML. AND REENL. - TOTAL	8,592	7,279	8,788	11,058		
FIRST ENLISTMENTS	4,070	3,803	5,176	6,377		
REENLISTMENTS - TOTAL	4,522	3,476	3,612	4,681		
IMMEDIATE REENLISTMENTS	3,769	2,901	3,319	4,514		
FORMER REGULAR	3,532	2,700	3,083	4,208		
FORMER RESERVE	237	201	236	306		
REENL. OTHER THAN IMMEDIATE	753	575	293	167		
WITHIN 2-90 DAYS AFTER SEPARATION	143	86	66	76		
FORMER REGULAR	143	86	66	76		
FORMER RESERVE	-	-	-	-		
OVER 90 DAYS AFTER SEPARATION	610	489	227	91		
RESERVES TO ACTIVE DUTY	1,176	1,112	1,536	1,851		
FIRST ENLISTMENTS	-	-	-	-		
REENLISTMENTS	170	127	145	155		
REPORTED TO ACTIVE DUTY	1,006	985	1,391	1,696		

TABLE P27.23

DEPARTMENT OF DEFENSE
MARINE CORPS ENLISTED PERSONNEL PROCUREMENT
FISCAL YEAR 1983

	OCT 1982	NOV 1982	DEC 1982	JAN 1983	FEB 1983	MAR 1983
TOTAL	7,049	5,246	4,875	5,454	4,597	3,911
REGULAR ENL. AND REENL. - TOTAL	6,849	5,197	4,810	5,325	4,508	3,834
FIRST ENLISTMENTS	4,756	3,591	2,609	3,856	2,934	2,272
REENLISTMENTS - TOTAL	2,093	1,606	2,201	1,469	1,574	1,562
IMMEDIATE REENLISTMENTS	1,757	1,290	1,991	1,158	1,335	1,395
FORMER REGULAR A/ FORMER RESERVE FORMER INDUCTEE	1,708 49 -	1,262 28 -	1,961 30 -	1,133 25 -	1,295 40 -	1,353 42 -
REENL. OTHER THAN IMMEDIATE	336	316	210	311	239	167
WITHIN 2-90 DAYS AFTER SEPARATION	50	33	28	38	21	23
FORMER REGULAR FORMER RESERVE FORMER INDUCTEE	45 - 5	31 2 -	24 4 -	29 9 -	20 - 1	19 3 1
OVER 90 DAYS AFTER SEPARATION	286	283	182	273	218	144
RESERVES TO ACTIVE DUTY	200	49	65	129	89	77
FIRST ENLISTMENTS REENLISTMENTS REPORTED TO ACTIVE DUTY	- 1 199	- 1 48	- - 65	- 1 128	- - 89	- - 77

A/ INCLUDES EXTENSIONS FOR WHICH REENLISTMENT BONUS IS PAID.
B/ INCLUDES ENLISTMENTS OF FORMER OFFICERS.

TABLE P27.23

DEPARTMENT OF DEFENSE
MARINE CORPS ENLISTED PERSONNEL PROCUREMENT
FISCAL YEAR 1983

	APR 1983	MAY 1983	JUN 1983	JUL 1983	AUG 1983	SEP 1983
TOTAL	3,051	3,266	4,969	5,092		
REGULAR ENL. AND REENL. - TOTAL	2,982	3,115	4,720	4,925		
FIRST ENLISTMENTS	1,948	2,050	3,681	3,801		
REENLISTMENTS - TOTAL	1,034	1,065	1,039	1,124		
IMMEDIATE REENLISTMENTS	948	922	952	1,006		
FORMER REGULAR A/	919	887	908	951		
FORMER RESERVE	29	35	44	55		
FORMER INDUCTEE	-	-	-	-		
REENL. OTHER THAN IMMEDIATE	86	143	87	118		
WITHIN 2-90 DAYS AFTER SEPARATION	6	10	16	4		
FORMER REGULAR	5	9	15	4		
FORMER RESERVE	1	1	1	-		
FORMER INDUCTEE	-	-	-	-		
OVER 90 DAYS AFTER SEPARATION	80	133	71	114		
RESERVES TO ACTIVE DUTY	69	151	249	167		
FIRST ENLISTMENTS	-	-	-	-		
REENLISTMENTS	-	1	1	1		
REPORTED TO ACTIVE DUTY	69	150	248	166		

A/ INCLUDES EXTENSIONS FOR WHICH REENLISTMENT BONUS IS PAID.
B/ INCLUDES ENLISTMENTS OF FORMER OFFICERS.

TABLE P27.24

DEPARTMENT OF DEFENSE
AIR FORCE ENLISTED PERSONNEL PROCUREMENT
FISCAL YEAR 1983

	OCT 1982	NOV 1982	DEC 1982	JAN 1983	FEB 1983	MAR 1983
TOTAL	10,352	11,093	12,459	10,541	10,582	18,261
REGULAR ENL. AND REENL. - TOTAL	10,321	11,086	12,450	10,528	10,574	18,251
FIRST ENLISTMENTS	5,491	5,262	5,241	5,260	4,920	5,979
REENLISTMENTS - TOTAL	4,830	5,824	7,209	5,268	5,654	12,272
IMMEDIATE REENLISTMENTS	4,363	5,471	6,924	4,964	5,340	11,890
FORMER REGULAR FORMER RESERVE & N.G.	4,359	5,471	6,923	4,963	5,336	11,889
REENL. OTHER THAN IMMEDIATE	467	353	285	304	314	382
OVER 90 DAYS AFTER SEPARATION A/	467	353	285	304	314	382
RESERVES & N.G. TO ACTIVE DUTY	31	7	9	13	8	10

A/ INCLUDES ENLISTMENTS OF FORMER COMMISSIONED AND WARRANT OFFICERS.

TABLE P27.24

DEPARTMENT OF DEFENSE
AIR FORCE ENLISTED PERSONNEL PROCUREMENT
FISCAL YEAR 1983

	APR 1983	MAY 1983	JUN 1983	JUL 1983	AUG 1983	SEP 1983
TOTAL	11,972	10,833	11,149	11,160		
REGULAR ENL. AND REENL. - TOTAL	11,959	10,824	11,138	10,903		
FIRST ENLISTMENTS	5,154	5,377	5,109	4,973		
REENLISTMENTS - TOTAL	6,805	5,447	6,029	5,930		
IMMEDIATE REENLISTMENTS	6,505	5,298	5,954	5,855		
FORMER REGULAR	6,602	5,297	5,952	5,853		
FORMER RESERVE & N.G.	3	1	2	2		
REENL. OTHER THAN IMMEDIATE	200	149	75	75		
OVER 90 DAYS AFTER SEPARATION A/	200	149	75	75		
RESERVES & N.G. TO ACTIVE DUTY	13	9	11	257		

A/ INCLUDES ENLISTMENTS OF FORMER COMMISSIONED AND WARRANT OFFICERS.

TABLE P29.20-29.34
DEPARTMENT OF DEFENSE
REENLISTMENT RATES BY SERVICE

	A/ "UNADJUSTED" REENLISTMENT RATES FOR TOTAL REGULARS					B/ "ADJUSTED" REENLISTMENT RATES FOR TOTAL REGULARS				
	TOTAL DOD	ARMY	NAVY	MARINE CORPS	AIR FORCE	TOTAL DOD	ARMY	NAVY	MARINE CORPS	AIR FORCE
FY 1979										
ELIGIBLES	343,032	144,849	74,818	37,016	86,349	322,679	134,924	73,598	36,668	77,489
REENLISTMENTS	181,338	81,443	35,367	12,398	52,130	162,994	71,505	35,488	12,047	43,954
REENLISTMENT RATE	52.9%	56.2%	47.3%	33.5%	60.4%	50.5%	53.0%	48.2%	32.9%	56.7%
FY 1980										
ELIGIBLES	343,425	133,010	86,251	35,032	89,132	334,952	136,721	83,581	34,928	79,722
REENLISTMENTS	190,260	82,793	41,556	12,388	53,523	183,494	86,494	40,500	12,237	44,263
REENLISTMENT RATE	55.4%	62.2%	48.2%	35.4%	60.0%	54.8%	63.3%	48.5%	35.0%	55.5%
FY 1981										
ELIGIBLES	334,048	116,743	94,303	29,453	93,549	331,979	131,957	90,462	29,070	80,490
REENLISTMENTS	201,527	77,892	51,519	10,517	61,599	200,987	93,105	49,039	10,182	48,661
REENLISTMENT RATE	60.3%	66.7%	54.6%	35.7%	65.8%	60.5%	70.6%	54.2%	35.0%	60.5%
FY 1982										
ELIGIBLES	329,296	117,331	82,192	32,948	96,825	325,066	126,035	84,001	33,594	81,436
REENLISTMENTS	224,465	84,631	52,254	16,117	71,463	212,452	93,335	54,450	12,171	52,496
REENLISTMENT RATE	68.2%	72.1%	63.6%	48.9%	73.8%	65.4%	74.1%	64.8%	36.2%	64.5%
FY 1983 (9 MOS)										
ELIGIBLES	247,442	93,117	58,272	26,720	69,333	229,578	103,689	56,010	25,121	44,758
REENLISTMENTS	168,841	62,137	35,825	14,070	56,809	156,435	72,709	39,033	12,427	32,266
REENLISTMENT RATE	68.2%	66.7%	61.5%	52.7%	81.9%	68.1%	70.1%	69.7%	49.5%	72.1%

A/ "UNADJUSTED REENLISTMENT RATE" - THE RATIO OF TOTAL REENLISTMENTS OCCURRING IN A GIVEN PERIOD TO TOTAL SEPARATIONS ELIGIBLE TO REENLIST IN THE SAME PERIOD, EXPRESSED AS A PERCENTAGE.

B/ "ADJUSTED REENLISTMENT RATE" - THE "UNADJUSTED" RATE ADJUSTED TO EXCLUDE THE EFFECTS OF: (1) EARLY SEPARATIONS FOR IMMEDIATE REENLISTMENTS AND (2) OTHER EARLY DISCHARGES OF ELIGIBLES UNDER EARLY RELEASE PROGRAMS.

TABLE P29.20-29.34
DEPARTMENT OF DEFENSE
REENLISTMENT RATES BY SERVICE

	A/ "UNADJUSTED" REENLISTMENT RATES FOR FIRST-TERM REGULARS					B/ "ADJUSTED" REENLISTMENT RATES FOR FIRST-TERM REGULARS				
	TOTAL DOD	ARMY	NAVY	MARINE CORPS	AIR FORCE	TOTAL DOD	ARMY	NAVY	MARINE CORPS	AIR FORCE
FY 1979										
ELIGIBLES	171,034	62,909	45,204	21,029	41,892	159,988	59,604	44,308	20,925	35,151
REENLISTMENTS	64,001	27,027	16,949	4,107	15,918	54,369	23,714	17,080	4,010	9,565
REENLISTMENT RATE	37.4%	43.0%	37.5%	19.5%	38.0%	34.0%	39.8%	38.5%	19.2%	27.2%
FY 1980										
ELIGIBLES	165,525	50,288	53,670	19,364	42,203	161,232	52,231	51,976	19,575	37,450
REENLISTMENTS	64,762	25,434	19,721	4,493	15,114	61,610	27,370	19,138	4,672	10,430
REENLISTMENT RATE	39.1%	50.6%	36.7%	23.2%	35.8%	38.2%	52.4%	36.8%	23.9%	27.9%
FY 1981										
ELIGIBLES	161,600	38,762	55,107	23,875	43,856	158,676	43,013	53,583	24,120	37,960
REENLISTMENTS	69,435	21,512	22,968	6,340	18,815	67,709	25,563	22,521	6,630	12,995
REENLISTMENT RATE	43.0%	55.0%	41.7%	26.6%	42.9%	42.7%	59.4%	42.0%	27.5%	34.2%
FY 1982										
ELIGIBLES	148,862	36,302	43,659	21,342	47,559	149,480	39,276	45,522	21,769	42,913
REENLISTMENTS	77,279	21,008	21,949	7,262	27,060	69,725	23,982	23,871	3,103	18,769
REENLISTMENT RATE	51.9%	57.9%	50.3%	34.0%	56.9%	46.6%	61.1%	52.4%	14.3%	43.7%
FY 1983 (9 MOS)										
ELIGIBLES	109,546	27,337	29,728	16,879	34,602	96,237	31,051	28,100	16,149	20,937
REENLISTMENTS	57,819	11,976	14,777	6,343	24,723	47,889	15,690	15,552	5,570	11,077
REENLISTMENT RATE	53.3%	43.8%	49.7%	37.6%	71.4%	49.8%	50.5%	55.3%	34.5%	52.9%

A/ "UNADJUSTED REENLISTMENT RATE" - THE RATIO OF TOTAL REENLISTMENTS OCCURRING IN A GIVEN PERIOD TO TOTAL SEPARATIONS, ELIGIBLE TO REENLIST IN THE SAME PERIOD, EXPRESSED AS A PERCENTAGE.

B/ "ADJUSTED REENLISTMENT RATE" - THE "UNADJUSTED" RATE ADJUSTED TO EXCLUDE THE EFFECTS OF: (1) EARLY SEPARATIONS FOR IMMEDIATE REENLISTMENTS AND (2) OTHER EARLY DISCHARGES OF ELIGIBLES UNDER EARLY RELEASE PROGRAMS.

TABLE P29.20-29.34
DEPARTMENT OF DEFENSE
REENLISTMENT RATES BY SERVICE

	A/ *UNADJUSTED* REENLISTMENT RATES FOR CAREER REGULARS				B/ *ADJUSTED* REENLISTMENT RATES FOR CAREER REGULARS					
	TOTAL DOD	ARMY	NAVY	MARINE CORPS	AIR FORCE	TOTAL DOD	ARMY	NAVY	MARINE CORPS	AIR FORCE
FY 1979										
ELIGIBLES	171,998	81,940	29,614	15,987	44,457	162,691	75,520	29,290	15,743	42,338
REENLISTMENTS	117,337	54,416	18,418	8,291	36,212	108,625	47,751	18,408	8,037	34,389
REENLISTMENT RATE	68.2%	66.4%	62.2%	51.9%	81.5%	66.8%	63.5%	62.8%	51.1%	81.2%
FY 1980										
ELIGIBLES	177,900	82,722	32,581	15,668	46,929	173,720	84,490	31,605	15,353	42,272
REENLISTMENTS	125,498	57,359	21,835	7,895	38,409	121,884	59,124	21,362	7,565	33,833
REENLISTMENT RATE	70.5%	69.3%	67.0%	50.4%	81.8%	70.2%	70.0%	67.6%	49.3%	80.0%
FY 1981										
ELIGIBLES	172,448	77,981	39,196	5,578	49,693	173,303	88,944	36,879	4,950	42,530
REENLISTMENTS	132,092	56,580	28,551	4,177	42,784	133,278	67,542	26,518	3,552	35,666
REENLISTMENT RATE	76.6%	72.6%	72.8%	74.9%	86.1%	76.9%	75.9%	71.9%	71.8%	83.9%
FY 1982										
ELIGIBLES	180,434	81,029	38,533	11,606	49,266	175,586	86,759	38,479	11,825	38,523
REENLISTMENTS	147,186	63,623	30,305	8,855	44,403	142,727	69,353	30,579	9,068	33,727
REENLISTMENT RATE	81.6%	78.5%	78.6%	76.3%	90.1%	81.3%	79.9%	79.5%	76.7%	87.6%
FY 1983 (9 MOS)										
ELIGIBLES	138,896	65,780	28,544	9,841	34,731	133,341	72,638	27,910	8,972	23,821
REENLISTMENTS	111,022	50,161	21,048	7,727	32,046	108,546	57,019	23,481	6,857	21,189
REENLISTMENT RATE	79.9%	76.3%	73.7%	78.5%	92.4%	81.4%	78.5%	84.1%	76.4%	89.0%

A/ *UNADJUSTED REENLISTMENT RATE* - THE RATIO OF TOTAL REENLISTMENTS OCCURRING IN A GIVEN PERIOD TO TOTAL SEPARATIONS ELIGIBLE TO REENLIST IN THE SAME PERIOD, EXPRESSED AS A PERCENTAGE.

B/ *ADJUSTED REENLISTMENT RATE* - THE *UNADJUSTED* RATE ADJUSTED TO EXCLUDE THE EFFECTS OF: (1) EARLY SEPARATIONS FOR IMMEDIATE REENLISTMENTS AND (2) OTHER EARLY DISCHARGES OF ELIGIBLES UNDER EARLY RELEASE PROGRAMS.

TABLE P309A

DEPARTMENT OF DEFENSE
ACTIVE DUTY MILITARY PERSONNEL STRENGTHS BY REGIONAL AREA AND BY COUNTRY^{1/}

JUNE 30, 1983

REGIONAL AREA/COUNTRY	TOTAL	ARMY	AIR FORCE	NAVY	MARINE CORPS
U. S. TERRITORY AND SPECIAL LOCATIONS					
CONTINENTAL UNITED STATES (CONUS)	1,285,838	463,858	429,453	252,394	140,133
ALASKA	20,322	7,821	10,679	1,617	205
HAWAII	46,319	17,321	6,392	12,793	9,813
AMERICAN SAMOA	1	1	0	0	0
GUAM	8,969	32	3,869	4,666	402
JOHNSTON ATOLL	135	128	7	0	0
NAVASSA ISLAND	1	1	0	0	0
PUERTO RICO	3,922	465	42	3,033	382
TRUST TERRITORY OF THE PACIFIC ISLANDS ^{2/}	76	33	13	30	0
VIRGIN ISLANDS OF THE U.S.	9	8	0	1	0
WAKE ISLAND	6	0	6	0	0
TRANSIENTS	78,171	29,929	22,862	17,591	7,789
AFLOAT	159,986	0	0	159,986	0
TOTAL-U.S. TERR. AND SPECIAL LOCATIONS	1,603,755	519,597	473,323	452,111	158,724
(1) WESTERN & SOUTHERN EUROPE					
AUSTRIA	32	5	2	0	25
BELGIUM*	2,303	1,487	669	117	30
CYPRUS	14	2	2	0	10
DENMARK*	53	5	21	16	11
FINLAND	19	5	2	2	10
FRANCE*	73	16	15	9	33
GERMANY (FED. REPUBLIC & WEST BERLIN)*	242,985	204,472	38,124	310	79
GIB-ALTAR	1	0	0	1	0
GREECE*	3,499	540	2,493	452	14
GREENLAND*	350	0	330	0	0
ICELAND*	3,124	2	1,097	1,920	105
IRELAND	8	2	0	0	6
ITALY*	13,430	4,310	4,548	4,319	253
LUXEMBOURG*	6	0	0	0	6
MALTA	2	2	0	0	0
NETHERLANDS*	2,616	744	1,849	15	8
NORWAY*	213	36	129	33	15
PORTUGAL*	1,582	68	1,103	398	13
SPAIN*	9,014	28	5,294	3,503	189
SWEDEN	17	1	6	2	8
SWITZERLAND	32	5	3	0	24
TURKEY*	5,083	1,262	3,706	97	18
UNITED KINGDOM*	27,098	230	24,158	2,389	321

1. Totals by location reflect personnel on TDY of 30 days or more.

2. Includes four civic-action teams of approximately 13 persons each (1 in Palau and 3 in the Federated States of Micronesia).

TABLE P309A

DEPARTMENT OF DEFENSE
ACTIVE DUTY MILITARY PERSONNEL STRENGTHS BY REGIONAL AREA AND BY COUNTRY

REGIONAL AREA/COUNTRY	JUNE 30, 1983				NAVY	MARINE CORPS
	TOTAL	ARMY	AIR FORCE	NAF		
AFL0AT	32,252	0	0	0	31,008	1,244
TOTAL-WESTERN & SOUTHERN EUROPE	343,786	213,222	83,551	0	44,591	2,422
(*EUROPEAN NATO)	(311,809)	(213,200)	(83,536)		(13,578)	(1,095)
(*EUROPEAN NATO PERMANENTLY ASSIGNED)	(306,812)	(213,401)	(81,071)		(11,250)	(1,090)
(2) EAST ASIA AND PACIFIC						
AUSTRALIA	685	8	237	432	8	8
BURMA	12	4	2	0	6	6
CHINA	20	6	3	2	9	9
FIJI	1	0	0	1	0	0
HONG KONG	42	13	5	13	11	11
INDONESIA	44	11	12	11	10	10
JAPAN (INCLUDING OKINAWA)	48,496	2,398	14,325	7,559	24,214	24,214
MALAYSIA	16	7	2	0	7	7
NEW ZEALAND	67	2	10	49	6	6
PHILIPPINES	15,123	52	8,858	4,941	1,272	1,272
REPUBLIC OF KOREA	38,882	27,397	10,716	354	415	415
SINGAPORE	30	6	3	12	9	9
THAILAND	138	58	59	11	10	10
AFL0AT	23,214	0	0	0	21,148	2,066
TOTAL-EAST ASIA & PACIFIC	126,770	29,962	34,232	34,533	28,043	28,043
(3) AFRICA, NEAR EAST AND SOUTH ASIA						
AFGHANISTAN	6	0	0	0	6	6
ALGERIA	8	2	0	0	6	6
BAHRAIN	93	3	0	90	0	0
BANGLADESH	8	2	0	0	6	6
BRITISH INDIAN OCEAN TERRITORY (INCLUDES DIEGO GARCIA)	1,186	0	11	1,175	0	0
CAMEROON	8	2	0	0	6	6
CONGO	8	1	0	0	6	6
EGYPT	1,365	1,220	88	31	26	26
ETHIOPIA	12	0	0	0	12	12
GABON	6	0	0	0	6	6
GHANA	12	4	0	0	8	8
INDIA	31	4	4	5	18	18
ISRAEL	83	27	19	8	29	29
IVORY COAST	10	3	0	0	7	7
JORDAN	24	10	7	0	7	7
KENYA	36	12	11	2	11	11

TABLE P 309A

DEPARTMENT OF DEFENSE
ACTIVE DUTY MILITARY PERSONNEL STRENGTHS BY REGIONAL AREA AND BY COUNTRY

JUNE 30, 1983

REGIONAL AREA/COUNTRY	TOTAL	ARMY	AIR FORCE	NAVY	MARINE CORPS
KUWAIT	27	19	1	1	6
LEBANON	90	72	0	1	17
LIBERIA	32	20	2	3	7
MADAGASCAR	8	0	0	2	6
MALAWI	3	3	0	0	0
MALI	6	0	0	0	6
MAURITIUS	6	0	0	0	6
MOROCCO	43	11	13	3	16
NEPAL	8	2	0	0	6
NIGER	6	0	0	0	6
NIGERIA	20	3	4	0	13
OMAN	18	6	3	1	8
PAKISTAN	31	5	7	2	17
ST. HELENA (INCLUDES ASCENSION ISLAND)	1	0	1	0	0
SAUDI ARABIA	627	250	303	61	13
SENEGAL	10	0	2	0	8
SEYCHELLES	4	0	4	0	0
SOMALIA	24	15	1	2	6
SOUTH AFRICA	20	2	5	2	11
SRI LANKA	9	0	0	3	6
SUDAN	23	9	5	0	9
SYRIA	13	3	0	0	10
TANZANIA, UNITED REPUBLIC OF	7	0	0	0	7
TUNISIA	26	14	2	1	9
UNITED ARAB EMIRATES	2	0	2	0	0
UPPER VOLTA	6	0	0	0	6
YEMEN (SANAA)	16	7	4	0	5
ZAIRE	23	9	5	0	9
ZARZIA	6	0	0	0	6
ZIMBABWE	8	2	0	0	6
AFLCOT	16,605	0	0	12,361	4,244
TOTAL-AFRICA, NEAR EAST & SOUTH ASIA	20,624	1,742	502	13,757	4,623
(4) WESTERN HEMISPHERE					
ANTIGUA	113	0	1	112	0
ARGENTINA	21	3	7	2	9
BAHAMAS, THE	37	0	2	29	6
BARBADOS	9	2	0	1	6
BELIZE	2	1	0	1	0
BERMUDA	1,050	0	0	1,764	86
BOLIVIA	11	2	3	0	6

TABLE P 309A
DEPARTMENT OF DEFENSE
ACTIVE DUTY MILITARY PERSONNEL STRENGTHS BY REGIONAL AREA AND BY COUNTRY

REGIONAL AREA/COUNTRY	JUNE 30, 1983				
	TOTAL	ARMY	AIR FORCE	NAVY	MARINE CORPS
BRAZIL	51	12	7	7	25
CANADA	660	12	202	433	13
CHILE	16	3	1	1	11
COLOMBIA	56	34	4	4	14
COSTA RICA	12	3	0	0	9
CUBA (CUANTANARO)	2,322	0	0	1,877	445
DOMINICAN REPUBLIC	17	4	2	3	8
ECUADOR	24	5	7	3	9
EL SALVADOR	96	74	2	0	20
GUATEMALA	23	6	1	0	16
GUYANA	6	0	0	0	6
HAITI	12	3	1	0	8
HONDURAS	255	234	8	2	11
JAMAICA	13	1	0	3	9
MEXICO	31	9	6	2	14
NICARAGUA	12	4	0	0	8
PANAMA	9,182	6,716	1,956	394	116
PARAGUAY	12	3	1	1	7
PERU	29	6	7	9	7
SURINAME	3	3	0	0	0
TURKS AND CAICOS ISLANDS	1	0	1	0	0
URUGUAY	14	4	2	1	7
VENEZUELA	30	5	11	5	9
AFLD ⁽⁵⁾	4,954	0	0	3,980	974
TOTAL-WESTERN HEMISPHERE	19,874	7,149	2,232	8,634	1,859
(5) ANTARCTICA	64	0	0	64	0
(6) EASTERN EUROPE					
BULGARIA	9	2	2	0	5
CZECHOSLOVAKIA	11	1	3	0	7
GERMAN DEMOCRATIC REPUBLIC	44	41	0	0	7
HUNGARY	12	4	1	0	7
POLAND	16	3	1	0	12
ROMANIA	15	4	1	0	10
UNION OF SOVIET SOCIALIST REPUBLICS	60	8	8	5	39
YUGOSLAVIA	21	4	1	1	12
TOTAL-EASTERN EUROPE	192	67	20	6	99
(7) UNDISTRIBUTED	258	69	98	91	0
TOTAL FOREIGN COUNTRIES	511,914	252,211	120,635	102,022	37,046

TABLE P309A

DEPARTMENT OF DEFENSE
ACTIVE DUTY MILITARY PERSONNEL STRENGTHS BY REGIONAL AREA AND BY COUNTRY

JUNE 30, 1983

REGIONAL AREA/COUNTRY	TOTAL	ARMY	AIR FORCE	NAVY	MARINE CORPS
ASHORE	439,543	252,211	120,635	33,179	28,518
AFL OAT	77,371	0	0	68,843	8,528
TOTAL WORLDWIDE	2,115,669	771,808	593,958	554,133	195,770
ASHORE	1,876,312	771,808	593,958	325,304	187,242
AFL OAT	237,357	0	0	228,829	8,528

NOTE. ASHORE INCLUDES TEMPORARILY SHORE-BASED.

Section 2

RESERVE MILITARY MANPOWER STATISTICS

TABLE R11.0

DEPARTMENT OF DEFENSE
RESERVE COMPONENT STRENGTH SUMMARY

JULY 31, 1983

TYPE OF DUTY	RESERVES BY RESERVE CATEGORY		ENLISTED A/
	TOTAL	OFFICER	
TOTAL	2,261,252	691,030	1,570,222
READY RESERVE	1,389,775	218,934	1,170,841
STANDY RESERVE	43,453	41,926	1,527
ON ACTIVE STATUS	6,246	4,771	1,475
INACTIVE STATUS	37,207	37,155	52
RETIRED - RETIRED STATUS	828,024	430,170	397,854
A/ INCLUDES OFFICER CANDIDATES.			

RESERVES IN "PAID STATUS"

SELECTED RESERVE	RESERVES IN "PAID STATUS"		ENLISTED
	PAY GROUP	TOTAL	
A,B,C,D,F,P,T,Q	985,084	140,614	844,470
U,AGR*			

* FULL-TIME SUPPORT - ACTIVE GUARD & RESERVES

TABLE R12.0
 DEPARTMENT OF DEFENSE
 RESERVE STRENGTH - OFFICER AND ENLISTED

DATE	TOTAL	OFFICERS	ENLISTED A/
OCT 31 1982	2,262,518	695,033	1,567,485
NOV 30 1982	2,264,041	695,669	1,568,372
DEC 31 1982	2,269,969	696,301	1,573,668
JAN 31 1983	2,270,165	696,098	1,574,067
FEB 28 1983	2,257,908	693,531	1,564,377
MAR 31 1983	2,258,947	692,993	1,565,954
APR 30 1983	2,261,958	692,453	1,569,505
MAY 31 1983	2,257,912	690,443	1,567,469
JUN 30 1983	2,257,753	690,510	1,567,243
JUL 31 1983	2,261,252	691,030	1,570,222

A/ INCLUDES OFFICER CANDIDATES.

TABLE R13.0

DEPARTMENT OF DEFENSE
 READY RESERVE AND ACTIVE DUTY STRENGTH COMPARED TO STATUTORY LIMITATION

JULY 31, 1983

	TOTAL	ON ACTIVE DUTY	READY RESERVE
STATUTORY READY RESERVE LIMITATION A/	2,900,000		
DIFFERENCE	1,326,271		
READY RESERVE AND ACTIVE DUTY STRENGTH	1,573,729	166,882	1,406,847
COAST GUARD RESERVE	17,669	597	17,072
DOD RESERVE	1,556,060	166,285	1,389,775
ARMY	964,692	50,078	914,614
NATIONAL GUARD	423,342	618	422,724
ARMY RESERVE	541,350	49,460	491,890
NAVAL RESERVE	240,836	63,064	177,772
MARINE CORPS RESERVE	93,748	6,088	87,660
AIR FORCE	256,784	47,055	209,729
AIR NATIONAL GUARD	102,213	253	101,960
AIR FORCE RESERVE	154,571	46,802	107,769

A/ SECTION 205(B), ARMED FORCES RESERVE ACT OF 1952, AS AMENDED.

TABLE R14.0
 DEPARTMENT OF DEFENSE
 RESERVE COMPONENT PERSONNEL BY RESERVE CATEGORY

DATE	TOTAL	READY	STANDBY	RETIRED
OCT 31 1982	2,262,518	1,372,075	51,587	838,856
NOV 30 1982	2,264,041	1,373,379	51,152	839,510
DEC 31 1982	2,269,969	1,381,423	49,175	839,371
JAN 31 1983	2,270,165	1,380,977	50,082	839,106
FEB 28 1983	2,257,908	1,372,648	47,362	837,898
MAR 31 1983	2,258,947	1,376,446	45,456	837,045
APR 30 1983	2,261,958	1,381,552	43,845	836,561
MAY 31 1983	2,257,912	1,379,325	43,474	835,113
JUN 30 1983	2,257,753	1,387,106	43,556	827,091
JUL 31 1983	2,261,252	1,389,775	43,453	828,024

TABLE R14.0

DEPARTMENT OF DEFENSE
RESERVE COMPONENT PERSONNEL BY RESERVE CATEGORY

OFFICERS

DATE	TOTAL	READY	STANDBY	RETIRED
OCT 31 1982	695,033	217,572	47,335	430,126
NOV 30 1982	695,669	217,692	47,001	430,976
DEC 31 1982	696,301	219,158	46,717	430,426
JAN 31 1983	696,098	218,130	47,353	430,615
FEB 28 1983	693,531	217,504	44,603	431,424
MAR 31 1983	692,993	217,823	43,545	431,625
APR 30 1983	692,453	218,667	42,020	431,766
MAY 31 1983	690,443	217,555	41,866	431,022
JUN 30 1983	690,510	218,235	41,986	430,289
JUL 31 1983	691,030	218,934	41,926	430,170

TABLE R14-0

DEPARTMENT OF DEFENSE
RESERVE COMPONENT PERSONNEL BY RESERVE CATEGORY

DATE	TOTAL	READY	STANDBY	RETIRED
OCT 31 1982	1,567,485	1,154,503	4,252	408,730
NOV 30 1982	1,568,372	1,155,687	4,151	408,534
DEC 31 1982	1,573,668	1,162,265	2,458	408,945
JAN 31 1983	1,574,067	1,162,847	2,729	408,491
FEB 28 1983	1,564,377	1,155,144	2,759	406,474
MAR 31 1983	1,565,954	1,158,623	1,911	405,420
APR 30 1983	1,569,505	1,162,885	1,825	404,795
MAY 31 1983	1,567,469	1,161,770	1,608	404,091
JUN 30 1983	1,567,243	1,168,871	1,570	396,802
JUL 31 1983	1,570,222	1,170,841	1,527	397,854

A/ INCLUDES OFFICER CANDIDATES

TABLE R21.0
 DEPARTMENT OF DEFENSE
 RESERVE PERSONNEL ON ACTIVE DUTY BY COMPONENT

JULY 31, 1983

----- COMPONENT/PERSONNEL -----	----- TOTAL -----	----- OFFICER -----	----- ENLISTED A/ -----
TOTAL DEPARTMENT OF DEFENSE	166,285	114,777	51,508
ARMY - TOTAL	50,078	49,493	585
NATIONAL GUARD OF THE U. S.	618	455	163
ARMY RESERVE	49,460	49,038	422
NAVAL RESERVE	63,064	19,212	43,852
MARINE CORPS RESERVE	6,088	5,318	770
AIR FORCE - TOTAL	47,055	40,754	6,301
AIR NATIONAL GUARD OF THE U. S.	253	213	40
AIR FORCE RESERVE	46,802	40,541	6,261

A/ INCLUDES OFFICER CANDIDATES.

TABLE R22.0

DEPARTMENT OF DEFENSE
RESERVE STRENGTH ON ACTIVE DUTY A/

DATE	TOTAL DOD	ARMY			NAVAL RESERVE	MARINE CORPS RESERVE	AIR FORCE		
		NATIONAL GUARD	ARMY RESERVE				AIR NATIONAL GUARD	AIR FORCE RESERVE	
OCT 31 1982	161,295	498	49,281	63,936	6,065	252	41,263		
NOV 30 1982	161,956	520	49,484	64,061	5,989	254	41,648		
DEC 31 1982	161,052	509	49,244	64,158	5,206	249	41,686		
JAN 31 1983	162,304	534	49,238	64,632	5,689	244	41,967		
FEB 28 1983	161,980	546	49,051	64,346	6,064	240	41,733		
MAR 31 1983	161,693	588	48,905	64,567	5,944	245	41,444		
APR 30 1983	160,856	578	48,867	63,478	5,937	251	41,745		
MAY 31 1983	159,684	585	48,695	62,815	5,845	250	41,494		
JUN 30 1983	161,028	591	49,151	63,591	6,119	258	41,518		
JUL 31 1983	166,285	618	49,460	63,064	6,088	253	46,802		

A/ CONTINUOUS OR EXTENDED ACTIVE DUTY.
EXCLUDES ACTIVE DUTY FOR RESERVE TRAINING.

TABLE R23.0

DEPARTMENT OF DEFENSE
RESERVE PERSONNEL BY COMPONENT AND CATEGORY

JULY 31, 1983

COMPONENT/ PERSONNEL	TOTAL	NAT'L GUARD OF THE U. S.	ARMY RESERVE	NAVAL RESERVE	MARINE CORPS RESERVE	AIR NAT'L GUARD OF THE U.S.	AIR FORCE RESERVE
TOTAL	2,261,252	422,724	959,207	323,267	97,612	101,960	356,482
OFFICER	691,030	41,990	299,385	160,087	14,246	12,593	162,729
ENLISTED	1,570,222	380,734	659,822	163,180	83,366	89,367	193,753
READY RESERVE	1,389,775	422,724	491,890	177,772	87,660	101,960	107,769
OFFICER	218,934	41,990	94,340	39,422	6,435	12,593	24,154
ENLISTED	1,170,841	380,734	397,550	138,350	81,225	89,367	83,615
STANDBY RESERVE	43,453	-	274	12,652	1,687	-	28,840
OFFICER	41,926	-	214	11,886	1,566	-	28,260
ENLISTED	1,527	-	60	766	121	-	580
ACTIVE STATUS	6,246	-	157	804	507	-	4,778
OFFICER	4,771	-	97	89	387	-	4,198
ENLISTED	1,475	-	60	715	120	-	580
INACTIVE STATUS	37,207	-	117	11,848	1,180	-	24,062
OFFICER	37,155	-	117	11,797	1,179	-	24,062
ENLISTED	52	-	-	51	1	-	-
RETIRED RESERVE	828,024	-	467,043	132,843	8,265	-	219,873
OFFICER	430,170	-	204,831	108,779	6,245	-	110,315
ENLISTED	397,854	-	262,212	24,064	2,020	-	109,558

TABLE R24.0

DEPARTMENT OF DEFENSE
RESERVE STRENGTH

DATE	TOTAL DOD	ARMY			NAVAL RESERVE	MARINE CORPS RESERVE	AIR FORCE		
		NATIONAL GUARD	ARMY RESERVE				AIR NATIONAL GUARD	AIR FORCE RESERVE	
OCT 31 1982	2,262,518	419,717	948,150	325,527	94,741	100,718	373,665		
NOV 30 1982	2,269,041	420,641	950,009	325,839	94,692	100,785	372,075		
DEC 31 1982	2,269,969	421,739	946,857	336,706	94,855	101,322	368,490		
JAN 31 1983	2,270,165	423,246	947,833	334,367	95,533	101,535	367,651		
FEB 28 1983	2,257,908	424,247	939,212	331,396	96,007	101,790	365,256		
MAR 31 1983	2,258,947	425,257	943,396	328,469	95,767	101,974	364,084		
APR 30 1983	2,261,958	425,362	949,791	325,626	95,938	102,050	363,191		
MAY 31 1983	2,257,912	424,492	948,720	323,463	96,435	102,097	362,705		
JUN 30 1983	2,257,753	423,545	955,227	323,099	98,609	101,947	355,326		
JUL 31 1983	2,261,252	422,724	959,207	323,267	97,612	101,960	356,482		

TABLE R26.5

DEPARTMENT OF DEFENSE
SELECTED RESERVE STRENGTH A/

COMPONENT/ PERSONNEL	OCT 1982	NOV 1982	DEC 1982	JAN 1983	FEB 1983	MAR 1983
TOTAL DOD	963,233	965,154	981,711	983,276	978,487	982,748
OFFICERS	135,452	135,693	137,931	138,190	137,329	137,718
ENLISTED	827,781	829,461	843,780	845,086	841,158	845,030
TOTAL DOD	963,233	965,154	981,711	983,276	978,487	982,748
OFFICERS	135,452	135,693	137,931	138,190	137,329	137,718
ENLISTED	827,781	829,461	843,780	845,086	841,158	845,030
ARMY NATIONAL GUARD	409,019	410,070	411,321	412,925	414,039	414,752
OFFICERS	40,312	40,442	40,407	40,425	40,335	40,319
ENLISTED	368,707	369,628	370,914	372,500	373,704	374,433
ARMY RESERVE	255,740	255,480	257,356	256,379	255,903	255,773
OFFICERS	48,007	48,053	48,224	48,241	48,419	48,715
ENLISTED	207,733	207,427	209,132	208,138	207,484	207,058
NAVAL RESERVE	93,721	94,762	107,665	108,270	102,541	102,407
OFFICERS	17,933	18,116	19,724	19,999	18,907	18,910
ENLISTED	75,788	76,646	87,941	88,271	83,634	83,497
MARINE CORPS RESERVE	40,230	40,331	40,502	40,619	40,259	43,626
OFFICERS	2,916	2,942	2,973	2,986	3,007	3,073
ENLISTED	37,314	37,389	37,529	37,633	37,252	40,553
AIR NATIONAL GUARD	100,550	100,590	101,104	101,332	101,583	101,752
OFFICERS	12,370	12,188	12,594	12,510	12,518	12,548
ENLISTED	88,180	88,402	88,510	88,822	89,065	89,204
AIR FORCE RESERVE	63,973	63,921	63,763	63,751	64,162	64,438
OFFICERS	13,914	13,952	14,009	14,029	14,143	14,153
ENLISTED	50,059	49,969	49,754	49,722	50,019	50,285

A/ INCLUDES PAY GROUPS A,B,C,D,F,P,T,Q,U,AGR (FULL-TIME SUPPORT - ACTIVE GUARD AND RESERVE)

TABLE R26.5

DEPARTMENT OF DEFENSE
SELECTED RESERVE STRENGTH A/

COMPONENT / PERSONNEL	APR 1983	MAY 1983	JUN 1983	JUL 1983	AUG 1983	SEP 1983
TOTAL DOD OFFICERS	982,966	982,263	985,127	985,084		
ENLISTED	138,104	139,047	140,041	140,614		
	844,862	843,216	845,086	844,470		
ARMY NATIONAL GUARD OFFICERS	414,626	413,413	413,002	412,203		
ENLISTED	40,302	40,440	40,993	41,378		
	374,324	372,973	372,009	370,825		
ARMY RESERVE OFFICERS	257,784	257,129	258,223	257,056		
ENLISTED	48,911	49,156	49,152	49,197		
	208,873	207,973	209,071	207,859		
NAVAL RESERVE OFFICERS	103,095	104,328	105,569	106,774		
ENLISTED	19,068	19,557	19,919	20,146		
	84,027	84,771	85,650	86,628		
MARINE CORPS RESERVE OFFICERS	40,839	40,377	40,940	41,227		
ENLISTED	3,086	3,077	3,078	3,052		
	37,753	37,300	37,862	38,175		
AIR NATIONAL GUARD OFFICERS	101,863	101,979	101,845	101,841		
ENLISTED	12,578	12,591	12,628	12,593		
	89,285	89,388	89,217	89,248		
AIR FORCE RESERVE OFFICERS	64,759	65,037	65,548	65,983		
ENLISTED	14,159	14,226	14,271	14,248		
	50,600	50,811	51,277	51,735		

A/ INCLUDES PAY GROUPS A,B,C,D,F,P,T,O,U,AGR (FULL-TIME SUPPORT - ACTIVE GUARD AND RESERVE)

G L O S S A R Y O F T E R M S

Active Duty. Full-time duty in the active service of a uniformed service, including duty on the active list, full-time training duty, annual training duty, and attendance while in the active service, at a school designated as a service school by law or by the Secretary concerned.

Actual Strength. The number of personnel in, or projected to be in, an organization or account at a specified point in time.

Armed Forces of the United States. Includes the Army, Navy, Air Force, Marine Corps, and Coast Guard, and all components thereof.

Assigned Strength. Actual strength of an entire service, not necessarily equal to combined unit actual strengths since individuals may be assigned but not joined.

Authorized Strength. The total strength authorized by Congress (for internal Service applications only). Authorized strength may be used synonymously with documented strength as defined below.

Cadet or Midshipman Enrolled in the Reserve Officers Training Corps (ROTC) Program. A member of the Senior Reserve Officer Training Corps (SROTC) under 10 U.S.C. 2107 for tuition, fees, books, and laboratory expenses.

Continental United States. Unless otherwise qualified, means the 48 contiguous States and the District of Columbia.

Enlisted Member. A person enlisted, enrolled, or conscripted into the military service.

Enlistment. (1) A voluntary entrance into military service under enlisted status, as distinguished from induction through Selective Service.

(2) A period of time, contractual or prescribed by law, which enlisted members serve between enrollment and discharge.

Officer. A commissioned or warrant officer.

Reserve Components. The Army National Guard of the United States, Army Reserve, Naval Reserve, Marine Corps Reserve, Air National Guard of the United States, Air Force Reserve, Coast Guard Reserve, and the Reserve Corps of the Public Health Service.

Service Academy Cadet or Midshipman. A person in training at one of the service academies to become a commissioned officer.

Transients. All military members who are not available for duty while executing permanent change of station (PCS) orders. Transients shall comprise all military personnel in a travel, proceed, leave enroute, or temporary duty enroute status on PCS orders to execute an accession, separation, training, operational, or rotational move.

Warrant Officer. A person who holds a commission or warrant in a warrant officer grade.

