

MICROCOPY

CHART

DIOR/P05-78

DEPARTMENT OF DEFENSE

PRIME CONTRACT AWARDS ~~OVER \$100,000~~

IN LABOR SURPLUS AREAS

~~FOR THE FISCAL YEAR~~

FISCAL YEAR 1978



AD-A154001

DEPARTMENT OF DEFENSE
WASHINGTON HEADQUARTERS SERVICES
DIRECTORATE FOR INFORMATION
OPERATIONS AND REPORTS

DEPARTMENT OF DEFENSE
PRIME CONTRACT AWARDS OVER \$10,000 IN LABOR SURPLUS AREAS
BY TYPE OF PREFERENCE

FISCAL YEAR 1978

WASHINGTON HEADQUARTERS SERVICES
DIRECTORATE FOR INFORMATION
OPERATIONS AND REPORTS

OCTOBER 31, 1979

OCT 1977 - SEP 1978

(THOUSANDS OF DOLLARS)

AWARDS IN AREAS AND SECTIONS

PREFERENCE AWARDS

COMBINED SM. BUS. /
LAPOR SUPPLUS AREA
SET-ASIDE
ASPR 1-706.7

SIZE OF BUSINESS AND PERIOD	TOTAL PROCUREMENT 1		TOTAL		CERTIFIED AWARDS 2		LAPOR SURPLUS AREAS 3		SET-ASIDE ASPR 1-706.7	
	AMOUNT	PERCENT	AMOUNT	PERCENT	AMOUNT	PERCENT	AMOUNT	PERCENT	AMOUNT	PERCENT

TOTAL BUSINESS FIRMS

OCT-DEC 1977	15,367,216	100.0	10,227,893	100.0	54,750	100.0	22,416	100.0	22,417	100.0	9,917	100.0
JAN-MAR 1978	10,594,879	100.0	3,878,253	100.0	31,662	100.0	16,469	100.0	7,216	100.0	5,977	100.0
APR-JUN 1978	11,529,461	100.0	5,495,423	100.0	12,883	100.0	4,233	100.0	11,179	100.0	5,937	100.0
JUL-SEP 1978	12,188,788	100.0	4,556,650	100.0	55,161	100.0	887	100.0	40,772	100.0	13,782	100.0
TOTAL, FY78 TO DATE	49,579,544	100.0	23,758,219	100.0	154,656	100.0	37,539	100.0	61,564	100.0	35,533	100.0

SMALL BUSINESS FIRMS

OCT-DEC 1977	2,229,574	14.5	1,370,306	13.4	41,091	75.1	16,852	75.2	14,322	63.9	9,917	100.0
JAN-MAR 1978	1,584,036	15.0	503,867	14.5	29,123	92.0	16,809	91.0	6,337	87.8	5,977	100.0
APR-JUN 1978	1,561,466	14.4	880,478	16.0	9,401	73.0	4,320	102.1	7,784	69.6	5,937	100.0
JUL-SEP 1978	2,897,717	23.9	1,267,555	27.8	48,123	86.9	850	95.8	33,571	82.3	13,702	100.0
TOTAL, FY78 TO DATE	8,372,793	16.9	4,022,206	16.9	127,738	82.6	30,191	80.4	62,014	76.0	35,533	100.0

LARGE BUSINESS FIRMS

OCT-DEC 1977	13,117,642	85.5	8,857,517	86.6	13,659	74.9	5,564	24.8	8,095	36.1		
JAN-MAR 1978	8,970,043	85.0	2,974,386	85.5	2,539	8.0	1,660	9.0	879	12.2		
APR-JUN 1978	9,867,995	85.6	4,614,945	84.0	3,482	27.0	87	2.1	3,395	30.4		
JUL-SEP 1978	9,251,071	76.1	3,289,095	72.2	7,238	13.1	37	4.2	7,201	17.7		
TOTAL, FY78 TO DATE	41,206,751	83.1	19,736,013	83.1	26,918	17.4	7,348	19.6	19,570	24.0		

1 PRIME CONTRACT AWARDS WITH U.S. BUSINESS FIRMS FOR WORK PERFORMANCE IN THE UNITED STATES, EXCLUDES CONTRACTS AWARDED TO GOVERNMENT AGENCIES, EDUCATIONAL AND NONPROFIT INSTITUTIONS, FOR WORK OUTSIDE THE U.S. AND FOREIGN MILITARY SALES.

2 AWARDS TO CERTIFIED FIRMS LOCATED IN A CLASSIFIED AREA OF SUBSTANTIAL UNEMPLOYMENT OR IN OR NEAR A CLASSIFIED SECTION OF CONCENTRATED UNEMPLOYMENT OR UNDEREMPLOYMENT WHICH ARE ELIGIBLE FOR PREFERENCE IN THE AWARD OF CERTAIN FEDERAL PROCUREMENT CONTRACTS UNDER DEFENSE MANPOWER POLICY NUMBER 4, AND AWARDS TO FIRMS WHICH, NOT SO CERTIFIED, AGREE TO HAVE A SUBSTANTIAL PROPORTION OF A CONTRACT PERFORMED BY A CERTIFIED FIRM, ACTING AS A FIRST-TIER SUBCONTRACTOR, LOCATED IN OR NEAR SUCH AREAS AND SECTIONS, AMOUNTING TO MORE THAN 25 PERCENT OF THE CONTRACT PRICE.

3 INCLUDES LAPOR SUPPLUS AREA OR INDUSTRY SET-ASIDE AWARDS BY OTHER THAN CERTIFICATION METHOD AND TIF-BID PREFERENCE AWARDS TO PRIME CONTRACTORS IN AREAS OF SUBSTANTIAL UNEMPLOYMENT.

SECTION I

LABOR SURPLUS AREA OR INDUSTRY SET-ASIDE AWARDS
BY OTHER THAN CERTIFICATION OR TIF-BID PREFERENCE METHODS

R E P O R T F O R M A T

L I N E 1.

ITEM 6 CONTRACTOR NAME
 ITEM 7 CITY NAME
 ITEM 7 STATE OR COUNTRY NAME
 ITEM 6 CONTRACTOR CODE
 ITEM 7 CITY CODE
 ITEM 7 STATE OR COUNTRY CODE

L I N E 2.

A. SUBMITTING DEPARTMENT
 B. REPORT MONTH
 C. PURCHASING OFFICE
 ITEM 5 REPORT NUMBER
 ITEM 1A CONTRACT NUMBER
 F. DEPARTMENT
 ITEM 2A ACTIVITY
 ITEM 2B FISCAL YEAR
 ITEM 2C SPECIAL NUMBER
 ITEM 3 CORRECTION OF PRIOR YSD
 F. ITEM 5A MINORITY BUSINESS FIRM
 H. ITEM 7C MULTI-YEAR PROCUREMENT
 I. ITEM 8 SURJECT WALSH-HEALEY / SERVICE CONTRACT ACT
 J. ITEM 9 LABOR SURPLUS AREA
 K. ITEM 10A FSC OR SERVICE CODE
 L. ITEM 10R SYSTEM OR EQUIPMENT CODE
 M. ITEM 10C DDOP CODE
 N. ITEM 11 DESCRIPTION OF COMMODITY OR SERVICE
 O. ITEM 12 COMMODATED PROCUREMENT
 P. ITEM 13 SYNOPSIS OF PROPOSED PROCUREMENT
 Q. ITEM 14 KIND OF PROCUREMENT ACTION
 R. ITEM 15 CONTRACT PLACEMENT
 S. ITEM 16 TYPE OF BUSINESS CONCERN
 T. ITEM 17 NEGOTIATION EXCEPTION
 U. ITEM 1A EXTENT OF COMPETITION IN NEGOTIATION
 V. ITEM 19 CERTIFIED COST OR PRICING DATA
 W. ITEM 20 TYPE OF CONTRACT
 X. ITEM 21 CONTRACT ADMINISTRATION
 Y. ITEM 21A COST ACCOUNTING STANDARDS
 Z. ITEM 22 AWARD MONTH
 1. ITEM 23 EST. COMPLETION MONTH + YEAR
 2. ITEM 24 DOLLARS IN THOUSANDS

A B C D E F G H I J K L M N O P Q R S T U V W X Y Z 77 \$1000

CALIFORNIA FOODS
 4 T 0130 9795 S-00138-R-00297 H C A 218 8915 000 02 FRUITS AND VEGETABLES CALIFORNIA 041739 3050 05 1 8 J 2 2 I LA 154
 NORTHWEST PACKING CO
 4 T 0130 9794 S-00138-R-00317 H C A 218 8950 000 07 CONDIMENTS AND RELATED PRODUCTS CALIFORNIA 649960 3050 05 1 8 J 2 2 I LA 186
 CITY TOTAL 2 1,070

PHARMACEUTICAL LABS
 4 D 0120 1574 S-00120-A-04540 H C A 219 6515 000 08 MEDICAL + SURGICAL INSTRUMENTS, FOUR CALIFORNIA 640085 3222 05 1 8 J 2 2 E KA 42
 TRINIDADE
 4 J 0400 0094 S-00400-R-00223 H C A 234 6230 000 09E ELECTRIC PORTABLE AND HAND LIGHTING CALIFORNIA 630430 3450 05 1 8 J 2 2 I DA 46
 LA MESA
 4 K 0500 0550 S-00500-R-01104 H C A 252 6145 000 09F WIRE + CABLE, ELECTRICAL CALIFORNIA 374560 3720 05 1 8 K 1 2 K CA 24

CAPITOL METALS CO INC
 4 M 0500 0424 S-00500-R-00559 H C B 241 9515 000 09F PLATE, SHEET, AND STRIP IRON AND STE CALIFORNIA 024143 3750 05 1 8 K 2 2 K DA 19
 4 N 0500 1757 S-00500-R-02054 H C B 241 9515 000 09F PLATE, SHEET, AND STRIP IRON AND STE CALIFORNIA 643500 3750 05 1 8 K 2 2 C GA 18
 4 O 0500 1733 S-00500-R-02101 H C B 241 9515 000 09F PLATE, SHEET, AND STRIP IRON AND STE CALIFORNIA 643500 3750 05 1 8 K 2 2 C GA 18
 4 P 0500 2624 S-00500-R-03101 H C B 241 9515 000 09E PLATE, SHEET, AND STRIP IRON AND STE CALIFORNIA 643500 3750 05 1 8 K 2 2 F LA 13
 CONTRACTOR TOTAL 4 374560

ENGINEERING MATERIALS CO
 4 L 0500 0452 S-00500-R-01189 H C A 219 5310 000 09E NUTS AND WASHERS CALIFORNIA 315060 3940 05 1 8 J 2 2 I DA 15
 4 E 0500 2779 S-00500-R-03174 H C A 219 5310 000 09E NUTS AND WASHERS CALIFORNIA 643500 3940 05 1 8 J 2 2 F DA 22
 CONTRACTOR TOTAL 2 37

PRESSLEY PRECISION METALS
 4 C 0500 2453 S-00500-R-03161 H C A 219 9515 000 09E PLATE, SHEET, AND STRIP IRON AND STE CALIFORNIA 007719 3880 05 1 8 K 2 2 F JA 29
 TRAVERDOL LABORATORIES INC
 4 L 0120 0435 S-00120-R-00018 H C A 219 6505 000 09A DRUGS, BIOLOGICALS, AND OFFICIALS CALIFORNIA 846242 3880 05 1 8 J 2 1 L OR 225
 CITY TOTAL 2 254

TRULIF LEWIS FOODS INC
 4 T 0130 9296 S-00138-R-00204 H C A 226 8915 000 02 FRUITS AND VEGETABLES CALIFORNIA 876435 4300 05 1 8 J 2 2 I LA 403
 4 U 0130 8884 S-00138-R-02071 H C A 226 8915 000 02 FRUITS AND VEGETABLES CALIFORNIA 847420 4300 05 1 8 J 2 2 H OR 543
 4 V 0130 8645 S-00138-R-08148 H C A 226 8915 000 02 FRUITS AND VEGETABLES CALIFORNIA 643500 4300 05 1 8 J 2 2 D FA 24
 4 W 0130 9720 S-00138-R-00172 H C A 226 8915 000 02 FRUITS AND VEGETABLES CALIFORNIA 643500 4300 05 1 8 J 2 2 F GA 32
 4 X 0130 9204 S-00138-R-00301 H C A 226 8915 000 02 FRUITS AND VEGETABLES CALIFORNIA 643500 4300 05 1 8 J 2 2 I LA 261
 4 Y 0130 9251 S-00138-R-00324 H C A 226 8915 000 02 FRUITS AND VEGETABLES CALIFORNIA 643500 4300 05 1 8 J 2 2 I LA 213
 CONTRACTOR TOTAL 5 1,577
 CITY TOTAL 6 1,940

CAMPBELL CHEMICAL CO
 4 Z 0130 9296 S-00138-R-00204 H C A 226 8915 000 02 FRUITS AND VEGETABLES CALIFORNIA 162180 4610 05 1 8 J 2 2 I LA 403

HYLAND ELECTRIC SUPPLY CO SOUTH GATE CALIFORNIA 6A1830 6720 05 6 A 6 5 J 01A 1 R J 2 2 K 0A 21

ADHUNT LABORATORIES SOUTH PASADENA CALIFORNIA 086080 6750 05 6 A 6 5 A 01A 1 R J 2 2 F 0A 225

EASTERN PACIFIC MILLS CO INC STOCKTON CALIFORNIA 038848 6870 05 6 A 6 5 J 01A 1 R J 2 2 D 0A 27

REI VARIETY GOODS STOCKTON CALIFORNIA 038824 6870 05 6 A 6 5 J 01A 1 R J 2 2 K 0A 12

THE VARIETY GOODS STOCKTON CALIFORNIA 087928 6870 05 6 A 6 5 H 01A 1 R J 2 2 I 0A 213

WESTERN LUMBER SALES INC STOCKTON CALIFORNIA 947550 6870 05 6 A 6 5 J 01A 1 R J 2 2 I 0A 88

WHITE TESTES STEEL CORP TORRANCE CALIFORNIA 905820 7120 05 6 A 6 5 C 01A 1 B K 2 2 K 0A 29

UPWOOD CO TORRANCE CALIFORNIA 90A540 7120 05 6 A 6 5 B 01A 1 R J 2 2 H 0A 26

COMPASSY COMPANY UNION CITY CALIFORNIA 900420 7335 05 6 A 6 5 C 01A 1 B K 2 2 F 0A 13

ORCA CHEMICAL CO UNION CITY CALIFORNIA 666717 7335 05 6 A 6 5 J 01A 1 R J 2 2 B 0A 54

PACIFIC STATES STEEL CORP UNION CITY CALIFORNIA 666400 7335 05 6 A 6 5 J 01A 1 R K 2 2 L 0A 15

LAURENCE CORP VAN NUYS CALIFORNIA 176278 7400 05 6 A 6 5 J 01A 1 R J 2 2 C 0A 116

410001

Y 77

X * V

U T T T

S Q Q Q

P P P P

O O O O

N N N N

M M M M

L L L L

K K K K

J J J J

I I I I

H H H H

G G G G

F F F F

11

K A

J J

I I

H H

G G

F F

E E

D D

C C

B B

A A

00

00

00

00

00

154220 2260 00

COV OPARD

RAILS, KEYS, AND PINS

TOTAL 11

11

NEW JERSEY 105250 3615 31

NEW JERSEY 681560 3230 31

NEW JERSEY 038862 4580 31

NEW JERSEY 851060 4580 31

NEW JERSEY 060980 4610 31

NEW JERSEY 082365 4610 31

NEW JERSEY 246774 4710 31

NEW JERSEY 741435 4925 31

NEW JERSEY 6 A 3 5 J 01A 1 R J 2 2 0 A9

NEW JERSEY 6 A 3 5 J 01A 1 R J 2 2 F B9

NEW JERSEY 6 A 6 5 J 01A 1 R K 2 2 G H9

NEW JERSEY 6 A 3 5 J 01A 1 R K 2 2 I A0

NEW JERSEY 6 A 3 5 J 01A 1 R J 2 2 F C9

NEW JERSEY 6 A 6 5 J 01A 1 R J 2 2 F JA

NEW JERSEY 6 A 6 5 J 01A 1 R J 2 2 G C9

NEW JERSEY 6 A 6 5 J 01A 1 R J 2 2 F C9

NEW JERSEY 6 A 6 5 J 01A 1 R J 2 2 F C9

NEW JERSEY 6 A 6 5 J 01A 1 R J 2 2 F C9

NEW JERSEY 6 A 6 5 J 01A 1 R J 2 2 F C9

NEW JERSEY 6 A 6 5 J 01A 1 R J 2 2 F C9

NEW JERSEY 6 A 6 5 J 01A 1 R J 2 2 F C9

NEW JERSEY 6 A 6 5 J 01A 1 R J 2 2 F C9

CONTRACTOR	CITY	STATE	ZIP	DATE	AMOUNT	STATUS	REMARKS
AMERIME CORP	UNION	NJ	07001	6/10/80	4610	PAID	UNITS AND WASHES
AUTO SWAGE CO INC	UNION	NJ	07001	6/10/80	4610	PAID	LOCKERS, RINS, AND SMELVIN
DALE FASHIONS INC	WINFLAND	NJ	08809	6/10/80	4710	PAID	CLOTHING, SPECIAL PURPOSE
ROLLER BEARING CO OF AMERICA	WEST TRENTON	NJ	08604	6/10/80	4925	PAID	BEARINGS, ANTI-FRICTION, UNMOUNTED
CONTRACTOR TOTAL					4,101		

\$ (000)

BASE EQUIPMENT CO INC ELIZABETH NEW JERSEY 041733 1240 31 1 9 J 2 2 H A 9 46

WESTHOUSE ELECTRIC SUPPLY CO ELIZABETH NEW JERSEY 950110 1240 31 1 9 J 2 2 H A 9 37

PLASTIC CORP HAMBURG NEW JERSEY 687240 1730 31 6 A 3 5 J 0 1 A 1 H K 2 2 K H 9 22

BANKS BROS CORP KEASBY NEW JERSEY 094180 2070 31 6 A 6 5 J 0 1 A 1 B J 2 2 I B 9 42

INSULATION COMPONENTS CORP MOONACHIE NEW JERSEY 487880 7770 31 6 A 3 5 J 0 1 A 1 R K 2 2 J A 9 15

LITTON SYSTEMS INC MORRIS PLAINS NEW JERSEY 556820 2800 31 6 A 3 5 J 0 1 A 1 R J 2 2 D J 8 32

DESBORGH NEW JERSEY 677150 2950 31 6 A 6 5 A 0 1 A 1 R J 2 2 O G 4 16

ASSOCIATED INTERNATIONAL CHEMICALS NEWARK NEW JERSEY 028719 3010 31 6 A 9 5 J 0 1 A 1 R J 2 2 R L 7 55-

CLEVER BROS CORP NEWARK NEW JERSEY 036832 3010 31 6 A 6 5 A 0 1 A 1 R J 2 2 I K 7 12

LIFE INDUSTRIES INC PATTERSON NEW JERSEY 554660 3450 31 6 A 6 5 J 0 1 A 1 9 J 2 2 H L 9 1,110

DIETZMAN INC PISCATAWAY NEW JERSEY 105250 3615 31 6 A 6 5 J 0 1 A 1 9 J 2 2 F L 4 33

TOTAL

TOTAL

TOTAL

TOTAL

TOTAL

TOTAL

TOTAL

TOTAL

TOTAL

TOTAL

TOTAL

TOTAL

TOTAL

TOTAL

TOTAL

TOTAL

TOTAL

TOTAL

TOTAL

TOTAL

TOTAL

TOTAL

TOTAL

TOTAL

TOTAL

TOTAL

TOTAL

TOTAL

TOTAL

CONTRACTOR	CONTRACT NO	DATE	AMOUNT	STATUS	DESCRIPTION	DATE	AMOUNT	STATUS	DESCRIPTION	DATE	AMOUNT	STATUS	DESCRIPTION
JA HAR SILICONE CORP	4 C 0400-2127	5-00400-A-01244	503615	0120	NEW JERSEY RUBBER FABRICATED MATRIALS	6 A 6 5 J 01A	1 0 J 2 2 R GA	1A					
GENERAL CARLF COOP	4 J 0500	0121 5-00500-M-00344	374560	0100	NEW JERSEY CARLF, ELECTRICAL	6 A 3 5 C 01A	1 R K 2 2 J FA	16					
FIAMCO INDUSTRIES	1 R 0409	0713 A-04409-6-0016A	321247	0370	NEW JERSEY AMMUNITION, OVER 125 MM	5 A 9 5 J 01A	1 A K 2 1 H	193-					
WALL ROPE WORKS INC	4 G 0500	4052 5-00500-P-02476	927180	0450	NEW JERSEY FIBER ROPE, CORDAGE, AND TWINE	6 A 3 5 J 01A	1 R K 2 2 G A9	1A					
WIRE WILLIAMS B CORP	4 F 0500	2220 5-00500-A-C1059	040331	0450	NEW JERSEY WIRE, NONELECTRICAL, IRON AND STEEL	6 A 3 5 J 01A	1 R K 2 2 E KA	2A					
BEACON SAFETY PRODUCTS CO	4 K 0700	068A 5-00700-7-C1354	102440	0520	NEW JERSEY FIRE FIGHTING EQUIPMENT	6 A 6 5 J 01A	1 R J 2 2 K DA	44					
HOSPICABLE PRODUCTS INC	4 H 0120	1147 5-00120-M-04157	471467	0540	NEW JERSEY HOSPITAL FURNITURE, EQUIPMENT, UTENS	6 A 6 5 J 01A	1 B J 2 2 H FA	109					
CONTRACTOR TOTAL			158					49					
WIRE PRO INC	4 F 0400	3707 5-00400-A-02296	964915	057A	NEW JERSEY CARLE CORD + WIRE ASSEMBLIES COMMUNI	6 A 6 5 J 01A	1 R J 2 2 F A9	1A					
VEONITRON CORP	4 L 0120	0645 5-00120-A-04172	916320	0750	NEW JERSEY HOSPITAL FURNITURE, EQUIPMENT, UTENS	6 A 6 5 C 01A	1 R J 2 2 L FA	101					
MURPHY P W CO INC	4 D 0400	3003 5-00400-A-0144A	032409	0790	NEW JERSEY CHEMICALS	6 A 6 5 J 01A	1 0 J 2 2 0 MA	1A					
MAX EQUIPMENT CO	4 F 0700	5018 5-00700-A-C1040	035513	1070	NEW JERSEY HOSE AND TUBING, FLEXIBLE	6 A 6 5 J 01A	1 R K 2 2 F KA	47					
CONTRACTOR TOTAL			72					25					
INDUSTRIAL COMPONENTS CORP	4 J 0500	0270 5-00500-7-00034	447800	1200	NEW JERSEY CARLF, ELECTRICAL	6 A 4 5 J 01A	1 R K 2 2 J CA	19					
ALLEN CHEMICAL CORP	4 J 0500	5217 5-00500-A-00126	033100	1260	NEW JERSEY MISCELLANEOUS CHEMICAL SPECIALTIES	6 A 4 5 R 01A	1 R J 2 2 I A9	1A					
CONTRACTOR TOTAL			4					14					

ACCOUNT NUMBER	DESCRIPTION	AMOUNT	DATE	STATUS	OTHER
ULTRA CARBON CORP	MICHIGAN	87600	0380	23	
4 I 0400 1056 S-00400-A-00268	RAY CITY	214	5977	000	09F ELECTRICAL CONTACT BRUSHES AND FLEXY
4 J 0400 0265 S-00400-A-00268	RAY CITY	214	5977	000	09F ELECTRICAL CONTACT BRUSHES AND FLEXY
CONTRACTOR TOTAL					
62					
SUPERMAN BROS CASHING CO	MICHIGAN	78710	1610	23	
4 A 0130 8297 S-00130-A-00651	EAST JORDAN	210	8915	000	92 FRUITS AND VEGETABLES
4 X 0130 8199 S-00130-A-00651	EAST JORDAN	210	8915	000	92 FRUITS AND VEGETABLES
CONTRACTOR TOTAL					
62					
FLEXFAB INC	MICHIGAN	347962	2550	23	
4 0 0700 1281 S-00700-A-01181	HASTINGS	217	4720	000	09F ROSE AND TURNING, FLEXIBLE
4 0 0700 1281 S-00700-A-01181	HASTINGS	217	4720	000	09F ROSE AND TURNING, FLEXIBLE
CONTRACTOR TOTAL					
73					
ELASTIC FOOT PRODUCTS CO	MICHIGAN	921325	2780	23	
4 4 0130 8159 S-00130-A-00597	IMLAY CITY	230	8950	000	02 CONDIMENT AND RELATED PRODUCTS
4 4 0130 8159 S-00130-A-00597	IMLAY CITY	230	8950	000	02 CONDIMENT AND RELATED PRODUCTS
CONTRACTOR TOTAL					
18					
DEFICO CORP	MICHIGAN	026671	3270	23	
4 0 0400 4678 S-00400-A-02682	LIVONIA	230	9120	000	09F RUBBER FABRICATED MATERIALS
4 0 0400 4678 S-00400-A-02682	LIVONIA	230	9120	000	09F RUBBER FABRICATED MATERIALS
CONTRACTOR TOTAL					
57					
EDFORD F T DE MICHIGAN	MICHIGAN	284940	3760	23	
2 I 1359 0281 A-00102-7-00533	MONTAGUE	271	6850	000	09F MISCELLANEOUS CHEMICAL SPECIALTIES
2 I 1359 0469 A-00102-7-00533	MONTAGUE	271	6850	000	09F MISCELLANEOUS CHEMICAL SPECIALTIES
4 0 0400 4083 S-00400-A-00102	MONTAGUE	271	6850	000	09F MISCELLANEOUS CHEMICAL SPECIALTIES
CONTRACTOR TOTAL					
260					
KEENE CORP	MICHIGAN	522970	1880	23	
4 J 0400 0018 S-00400-7-01914	MUSKEGON	271	3110	000	09F BEARINGS, ANTI-FRICTION, UNMOUNTED
4 2 0400 0400 S-00400-7-01914	MUSKEGON	271	3110	000	09F BEARINGS, ANTI-FRICTION, UNMOUNTED
CONTRACTOR TOTAL					
57					
CASHLEAD PRODUCTS INC	MICHIGAN	155700	6460	23	
4 F 0400 4642 S-00400-4-01726	ROCHESTER CITY	278	3990	000	090 MISCELLANEOUS MATERIALS HANDLING FOR
4 0 0400 2671 S-00400-4-01726	ROCHESTER CITY	278	3990	000	090 MISCELLANEOUS MATERIALS HANDLING FOR
CONTRACTOR TOTAL					
210					
STATE TOTAL					
14					
765					

ACCOUNT NUMBER	DESCRIPTION	AMOUNT	DATE	STATUS	OTHER
4 I 0400 1056 S-00400-A-00268	RAY CITY	214	5977	000	09F ELECTRICAL CONTACT BRUSHES AND FLEXY
4 J 0400 0265 S-00400-A-00268	RAY CITY	214	5977	000	09F ELECTRICAL CONTACT BRUSHES AND FLEXY
CONTRACTOR TOTAL					
62					
4 A 0130 8297 S-00130-A-00651	EAST JORDAN	210	8915	000	92 FRUITS AND VEGETABLES
4 X 0130 8199 S-00130-A-00651	EAST JORDAN	210	8915	000	92 FRUITS AND VEGETABLES
CONTRACTOR TOTAL					
62					
4 0 0700 1281 S-00700-A-01181	HASTINGS	217	4720	000	09F ROSE AND TURNING, FLEXIBLE
4 0 0700 1281 S-00700-A-01181	HASTINGS	217	4720	000	09F ROSE AND TURNING, FLEXIBLE
CONTRACTOR TOTAL					
73					
4 4 0130 8159 S-00130-A-00597	IMLAY CITY	230	8950	000	02 CONDIMENT AND RELATED PRODUCTS
4 4 0130 8159 S-00130-A-00597	IMLAY CITY	230	8950	000	02 CONDIMENT AND RELATED PRODUCTS
CONTRACTOR TOTAL					
18					
4 0 0400 4678 S-00400-A-02682	LIVONIA	230	9120	000	09F RUBBER FABRICATED MATERIALS
4 0 0400 4678 S-00400-A-02682	LIVONIA	230	9120	000	09F RUBBER FABRICATED MATERIALS
CONTRACTOR TOTAL					
57					
2 I 1359 0281 A-00102-7-00533	MONTAGUE	271	6850	000	09F MISCELLANEOUS CHEMICAL SPECIALTIES
2 I 1359 0469 A-00102-7-00533	MONTAGUE	271	6850	000	09F MISCELLANEOUS CHEMICAL SPECIALTIES
4 0 0400 4083 S-00400-A-00102	MONTAGUE	271	6850	000	09F MISCELLANEOUS CHEMICAL SPECIALTIES
CONTRACTOR TOTAL					
260					
4 J 0400 0018 S-00400-7-01914	MUSKEGON	271	3110	000	09F BEARINGS, ANTI-FRICTION, UNMOUNTED
4 2 0400 0400 S-00400-7-01914	MUSKEGON	271	3110	000	09F BEARINGS, ANTI-FRICTION, UNMOUNTED
CONTRACTOR TOTAL					
57					
4 F 0400 4642 S-00400-4-01726	ROCHESTER CITY	278	3990	000	090 MISCELLANEOUS MATERIALS HANDLING FOR
4 0 0400 2671 S-00400-4-01726	ROCHESTER CITY	278	3990	000	090 MISCELLANEOUS MATERIALS HANDLING FOR
CONTRACTOR TOTAL					
210					
STATE TOTAL					
14					
765					

HOSTON INSULATED WIRE FABRIC CO HUSTON MASS 128400 0200 22 6 A 3 5 J 01A 1 R K 2 2 H F9 207

4 H 0500 5006 S-00500-A-C1514 F C A 204 6145 000 C9F WIRE + CABLE, ELECTRICAL

MICRO HYDRAULIC VALVE CO INC HAVENHILL MASS 603020 0300 22 6 A 9 5 J 01A 1 R K 2 2 F FA 91-

4 F 0700 6150 S-00700-7-C2453 R C A 204 6420 000 C9F VALVES, NONPOWERED

PLYMOUTH RUBBER CO INC CANTON MASS 688200 0400 27 6 A 5 A 01A 1 R J 2 2 K CA 16

4 K 0600 9856 S-00600-7-C2724 R C A 204 5970 000 C9F ELECTRICAL INSULATORS AND INSULATING 6 A 6 5 A 01A 1 R J 2 2 J DA 236

4 K 0400 0412 S-00400-7-C1525 W C A 204 5170 000 C9F ELECTRICAL INSULATORS AND INSULATING 6 A 6 5 A 01A 1 R J 2 2 J DA 236

4 J 0600 0084 S-00600-7-C1626 R C A 204 5970 000 C9F ELECTRICAL INSULATORS AND INSULATING 6 A 6 5 A 01A 1 R J 2 2 J DA 118

4 L 0400 115A S-00400-8-C0541 R C A 204 5970 000 C9F ELECTRICAL INSULATORS AND INSULATING 6 A 6 5 A 01A 1 R J 2 2 L CA 22

4 L 0400 1067 S-00400-8-C0643 R C A 204 5970 000 C9F ELECTRICAL INSULATORS AND INSULATING 6 A 6 5 A 01A 1 R J 2 2 L CA 26

4 F 0500 5554 S-00500-8-C2136 R C A 204 5370 000 C9F ELECTRICAL INSULATORS AND INSULATING 6 A 3 5 A 01A 1 R J 2 2 F JA 77

4 F 0400 5556 S-00400-8-C2162 R C A 204 5070 000 C9F ELECTRICAL INSULATORS AND INSULATING 6 A 6 5 A 01A 1 R J 2 2 F TA 73

CONTRACTOR TOTAL 518

MARKET FOWLE CO FIVEFIT MASS 576480 0830 22 6 A 6 5 C 01A 1 R J 2 2 D JA 29

4 U 0400 1321 S-00400-8-C1427 R C A 204 7110 000 C9F FOOD COOKING, BAKING, AND WARMING EQ 6 A 6 5 C 01A 1 R J 2 2 D JA 29

EASTON CANVAS PRODUCTS INC HAVENHILL MASS 291120 1130 22 6 A 6 5 D 01A 1 R J 2 2 I 09 53

4 T 0120 3350 S-00120-8-C516A R C A 214 6545 000 C9H MEDICAL SETS, KITS, AND OUTFITS

C S T CONTAINER SERVICE INC LOWELL MASS 019152 1340 22 6 A 3 5 J 01A 1 R K 2 2 F 09 99

4 F 0700 1912 S-00700-8-C0069 R C A 222 4930 000 C9F LUBRICATION AND FUEL DISPENSING EQUI 6 A 3 5 J 01A 1 R K 2 2 F 09 99

NEW BEDFORD TEXTILE CO NEW BEDFORD MASS 639060 1810 22 6 A 6 5 J 01A 1 R K 2 2 0 JA 67

4 D 0500 2055 S-00500-8-C0100 F C A 230 4070 000 C9F FIBER ROPE, CORDAGE, AND TWINE 6 A 6 5 J 01A 1 R K 2 2 0 JA 67

4 H 0500 5079 S-00500-8-C2514 D C A 230 4070 000 C9F FIBER ROPE, CORDAGE, AND TWINE 6 A 3 5 J 01A 1 R K 2 2 M 04 3A

CONTRACTOR TOTAL 105

INSULATED PRODUCTS CO INC NORTH ADAMS MASS 691700 1870 22 6 A 3 5 J 01A 1 R J 2 2 G L9 A,543

4 G 0100 1775 S-00100-8-C1044 R C A 240 6415 000 A9 CLOTHING, SPECIAL PURPOSE

WELLS CO TOPSFIELD MASS 739560 2850 27 6 A 6 5 J 01A 1 R J 2 2 G 00 50

4 W 0500 4506 S-00400-8-C2451 D C A 204 6230 000 C9F ELECTRIC PORTABLE AND HAND LIGHTING 6 A 6 5 J 01A 1 R J 2 2 G 00 50

4 W 0500 4828 S-00400-8-C2451 D C A 204 6230 000 C9F ELECTRIC PORTABLE AND HAND LIGHTING 6 A 6 5 J 01A 1 R J 2 2 H 19 99

CONTRACTOR TOTAL 144

CENTRAL CABLE CORP WILLIAMSTOWN MASS 379560 3310 22 6 A 3 5 A 01A 1 R K 2 2 K MA 62

4 K 0500 0393 S-00500-8-C0504 R C A 240 6145 000 C9F WIRE + CABLE, ELECTRICAL

WOSTON CO WOSTON MASS 640340 3190 22 6 A 6 5 N 01A 1 R J 2 2 L CA 34

4 L 0500 1304 S-00400-8-C0504 R C A 234 4350 000 C9F CERAMICTILES AND FIBRE SURFACING MATS 6 A 6 5 N 01A 1 R J 2 2 L CA 34

STATE TOTAL 10

A B C D E F G H I J K L M N O P Q R S T U V W X Y Z

MARYLAND 115260 0160 21 1 R K 2 2 G A 9 10

MARYLAND 278452 0160 21 1 R K 2 2 G A 9 10

MARYLAND 010952 0160 21 1 R K 2 2 G A 9 10

MARYLAND 922800 0160 21 1 R K 2 2 G A 9 10

MARYLAND 099140 0215 21 1 R K 2 2 G A 9 10

MARYLAND 379560 0970 21 1 R K 2 2 G A 9 10

MARYLAND 040118 0970 21 1 R K 2 2 G A 9 10

MARYLAND 025288 0970 21 1 R K 2 2 G A 9 10

MARYLAND 031702 1910 21 1 R K 2 2 G A 9 10

MARYLAND 115260 2660 21 1 R K 2 2 G A 9 10

MARYLAND 722550 2710 21 1 R K 2 2 G A 9 10

MARYLAND 549210 2860 21 1 R K 2 2 G A 9 10

MARYLAND 549210 2860 21 1 R K 2 2 G A 9 10

MARYLAND 549210 2860 21 1 R K 2 2 G A 9 10

MARYLAND 549210 2860 21 1 R K 2 2 G A 9 10

MARYLAND 549210 2860 21 1 R K 2 2 G A 9 10

MARYLAND 549210 2860 21 1 R K 2 2 G A 9 10

MARYLAND 549210 2860 21 1 R K 2 2 G A 9 10

MARYLAND 549210 2860 21 1 R K 2 2 G A 9 10

MARYLAND 549210 2860 21 1 R K 2 2 G A 9 10

MARYLAND 549210 2860 21 1 R K 2 2 G A 9 10

A B C C C D D D D E E E E F F F F F G G H I J J J J K K K L L L M M M N N N N N O O P P S T T T U U V W X Y Y Z Z (1000)

COGN 7 FLEERACH COOP 239040 0290 19
6 J 6134 9251 5-00134-8-C0704 R C A 213 815 000 02 BOXES, CARIONS, AND CRATES 6 A 3 5 B 01A 1 R J 2 2 I H 0 A61

4 L 9500 0995 5-00400-8-C0749 R C A 223 5940 000 095 LUGS, TERMINALS, AND TERMINAL STRIPS 80115 1120 19
HOMER LOUTSIARA 859 1 B J 2 2 I F A 19

STATE TOTAL 2

 A B C D E F G H I J K L M N O P Q R S T U V W X Y Z

COMPANY	ADDRESS	CITY	STATE	ZIP	PHONE	MARK	DATE	AMOUNT
COALFIELD CORP	LONDON	KENTUCKY		2230	026767	1A	6 A 1 5 J 01A	1 2 J CA 47
W R S INC	MANCHESTER	KENTUCKY		2350	074311	1A	6 A 3 5 J 01A	1 R K 1 2 J CA 679
CONTRACTOR TOTAL								1 R K 1 2 J CA 833
MELBOY STEEL CO INC	NEWPORT	KENTUCKY		2650	595740	1A	6 A 3 5 J 01A	1 R K 2 2 L DA 49
CLOWALTA PAPER CO INC	OLIVE HILL	KENTUCKY		2710	390340	1A	6 A 5 5 J 01A	1 R J 2 2 K FA 306
ISLAND CREEK COAL CO	PRICE	KENTUCKY		2925	501060	1A	6 A 3 5 C 01A	1 9 K 1 2 L CA 111
STATE TOTAL								

A R CCCC 0000 FFFFFFFFFFFFFF F G H I JJJ KKKK LLL MMM NNNNNNNNNNNNNNNNNNNNNNNNN O P Q R S TTTT U V W X Y ZZ \$10000

MUSGRAV PACKING CO INDIANA 623460 0250 15 104
4 T 013H 9297 S-0013H-A-C0300 R C A 254 8915 000 02 FRUITS AND VEGETABLES 6 A 6 5 C 01A 1 R J 2 2 I LK 104
4 F 013H 895A S-0013H-A-C1000 R C A 254 8915 000 02 FRUITS AND VEGETABLES 6 A 6 5 C 01A 1 R J 2 2 F TA 32
4 T 013H 9101 S-0013H-A-C1140 R C A 254 8915 000 02 FRUITS AND VEGETABLES 6 A 3 5 R 01A 1 R J 2 2 M KR 0A

CONTRACTOR TOTAL 224

ISAACSON STRUCTURAL STEEL CO INDIANA 500705 1880 15 11
4 F 0500 2275 S-000500-A-C1057 R C R 21A 9520 000 09F STRUCTURAL SHAPES, IRON AND STEEL 6 A 6 5 J 01A 1 R K 2 2 F LA 11

HEEK PERRY S TRUCKING CO INC MONTGOMERY 02157R 3450 15 39
4 J 0600 0021 S-000600-7-01655 R C R 279 9110 000 00R FUELS, SOLID 6 A 6 5 J 01A 1 R K 1 2 J K7 39
4 J 0600 0022 S-000600-7-01655 R C R 279 9110 000 00R FUELS, SOLID 6 A 6 5 J 01A 1 R K 1 2 J K7 21
4 J 0600 1003 S-000600-7-01702 R C R 279 9110 000 00R FUELS, SOLID 6 A 3 5 J 01A 1 R K 1 2 J K7 8R5

CONTRACTOR TOTAL 445
STATE TOTAL 680

***** F G H I J J J K K K L L L M M M N N N N N N N N N N N N N N N N N N N O O P P S T T T U V W X Y Z

WATSON FLOYD & SON TRUCKING SEP STATE	682340	3870	14	6	A	6	5	J	U	1	A	1	R	J	2	2	0	HA	81
WATSON FLOYD & SON TRUCKING SEP STATE	00334A	5340	14	6	A	7	5	J	U	1	A	1	H	K	1	2	J	KA	56

WATSON FLOYD & SON TRUCKING SEP STATE 682340 3870 14 6 A 6 5 J U 1 A 1 R J 2 2 0 HA 81

WATSON FLOYD & SON TRUCKING SEP STATE 00334A 5340 14 6 A 7 5 J U 1 A 1 H K 1 2 J KA 56

WATSON FLOYD & SON TRUCKING SEP STATE TOTAL ?

WATSON FLOYD & SON TRUCKING SEP STATE 97

A B C D E F G H I J K L M N O P Q R S T U V W X Y Z

016045 1270 10
 6 A 3 5 J 01A 1 H J 2 2 E 69 13
 6 A 3 5 J 01A 1 A J 2 2 F 69 25
 6 A 3 5 J 01A 1 B K 2 2 F 69 46
 6 A 3 5 J 01A 1 B K 2 2 F 69 30
 6 A 3 5 J 01A 1 B K 2 2 F 69 89
 6 A 3 5 J 01A 1 B K 2 2 G 09 67
 6 A 3 5 J 01A 1 B J 2 2 H 09 14

CONTRACTOR TOTAL 7 286
 METRIC SYSTEMS CORP
 2 F 1981 0307 A-61339-7-C007A FORT WALTON BEACH FLORIDA 600390 1260 10
 2 D 1981 0240 A-61339-7-C007A R C A 217 5840 000 A7 RADAR EQUIPMENT, EXCEPT AIRBORNE A A 7 5 J 01A 2 A J 1 F 6A 30
 CONTRACTOR TOTAL 2 380

LUDDY ELECTRONICS & SYSTEMS INC
 2 T 1959 7689 A-00104-8-C00M9 POMPANO BEACH FLORIDA 560670 2970 10
 2 G 1959 5761 A-00104-8-C00M1 R C A 214 5865 000 A6 SPECIALIZED AMMUNITION HANDLING AND A A 6 5 J 01A 1 B J 2 2 H L9 232
 CITY TOTAL 2 526

EMPESON ELECTRIC CO
 1 F 0009 1637 A-00009-6-C0071 TAMPA FLORIDA 310919 3480 10
 5 A 7 5 J 01A 2 H K 2 1 F 53

FEDON GEORGE F & CO
 1 D 0009 1191 A-00009-9-A-C0098 TAMPA FLORIDA 029842 3540 10
 CITY TOTAL 2 1,267
 STATE TOTAL 13 2,457

AMMUNITION, OVER 125 MM 1,267
 AMMUNITION, OVER 125 MM 2,457

AMMUNITION, OVER 125 MM 1,267
 AMMUNITION, OVER 125 MM 2,457

AMMUNITION, OVER 125 MM 1,267
 AMMUNITION, OVER 125 MM 2,457

AMMUNITION, OVER 125 MM 1,267
 AMMUNITION, OVER 125 MM 2,457

AMMUNITION, OVER 125 MM 1,267
 AMMUNITION, OVER 125 MM 2,457

AMMUNITION, OVER 125 MM 1,267
 AMMUNITION, OVER 125 MM 2,457

A B C D E F G H I J K L M N O P Q R S T U V W X Y Z

PHOENIX STEEL CORP
6 X 0500 0590 5-00400-A-01175 R C A 270 9515 000 C9E PLATE, SHEET, AND STEEL IRON AND STEEL 6 A 35 C 01A 1 R K 2 2 K DA 13

KFENE CORP
6 J 0400 0200 5-00400-7-03112 R C A 270 5970 000 C9E ELECTRICAL INSULATORS AND INSULATING 6 A 65 0 01A 1 R J 2 2 J AA 31
6 K 0400 0376 5-00400-7-03112 R C A 270 5970 000 C9E ELECTRICAL INSULATORS AND INSULATING 6 A 65 H 01A 1 R J 2 2 J BA 61
CONTRACTOR TOTAL 92

ALLIED CHEMICAL CORP
6 C 0400 2642 5-00400-A-01116 R C A 270 6810 000 C9F CHEMICALS 6 A 65 0 01A 1 R J 2 2 C FA 28
STATE TOTAL 6 133

CLAYMONT
6 A 270 9515 000 C9E PLATE, SHEET, AND STEEL IRON AND STEEL 6 A 35 C 01A 1 R K 2 2 K DA 13
NEWARK
6 J 0400 0200 5-00400-7-03112 R C A 270 5970 000 C9E ELECTRICAL INSULATORS AND INSULATING 6 A 65 0 01A 1 R J 2 2 J AA 31
6 K 0400 0376 5-00400-7-03112 R C A 270 5970 000 C9E ELECTRICAL INSULATORS AND INSULATING 6 A 65 H 01A 1 R J 2 2 J BA 61
NORTH CLAYMONT
6 C 0400 2642 5-00400-A-01116 R C A 270 6810 000 C9F CHEMICALS 6 A 65 0 01A 1 R J 2 2 C FA 28
STATE TOTAL 6 133

PAGE A

A R CCCC 0000 FFFFFFFFFFFFFFFFFFFFFFFFFFFFFFFFFFFFFF D P R S TTTT U V W X Y Z 77 \$10001

STEWART WAGNER CO
H I O R E P O R T
R C A 205 5360 000 C9E MISCELLANEOUS HARDWARE 6 A 7 5 C 01A 1 B K 3 2 G GA 12
R C A 205 5360 000 C9E MISCELLANEOUS HARDWARE 6 A 4 5 C 01A 1 B K 2 2 F LA 60
R C A 205 5360 000 C9E MISCELLANEOUS HARDWARE 6 A 4 5 C 01A 1 B K 2 2 F JA 44
CONTRACTOR TOTAL 115

DICKINSON K CO
C A R B A N
R C A 222 6515 000 C9A MEDICAL + SURGICAL INSTRUMENTS, FOOT 10480 0150 07 1 B J 2 2 A FA 11
R C A 222 6515 000 C9A MEDICAL + SURGICAL INSTRUMENTS, FOOT 6 A 6 5 A 01A 1 B J 2 2 B FA 25
R C A 222 6515 000 C9A MEDICAL + SURGICAL INSTRUMENTS, EQUI 6 A 3 5 A 01A 1 B J 2 2 C GA 72
CONTRACTOR TOTAL 104

DANF L C CO
E S S E X
R C A 216 6230 000 C9E ELECTRIC PORTABLE AND HAND LIGHTING 273620 0630 07 6 A 6 5 J 01A 1 B J 2 2 H HA 21

NICHOLS ENGINEERING INC
S H E L L O N
R C C 205 K534 000 S1 VESSELS 643670 1220 07 6 A 4 5 J 01A 1 B J 2 2 L PA 19

TORRINGTON CO INC
T O R R I N G T O N
R C A 222 3110 000 C9E BEARINGS, ANTI-FRICTION, UNMOUNTED 881100 1470 07 6 A 4 5 C 01A 1 B J 2 2 L HA 18

TIMES WIRE & CABLE CO INC
W A L L I N G F O R D
R C A 217 6145 000 C9E WIRE + CABLE, ELECTRICAL 875460 1460 07 6 A 3 5 C 01A 1 B J 2 2 K CA 34
STATE TOTAL 315

A P CCCC DDDD EEEEEEEEEEE E F G H I JJJ KKK LLL MMM NNNNNNNNNNNNNNNNNNNNNNNNNNNNNNN O P Q R S TTTT U V W X Y Z 77 \$10001														
CITY	CONTRACT NO	DATE	DESCRIPTION	QUANTITY	UNIT PRICE	TOTAL	STATUS	DATE	STATUS	DATE	STATUS	DATE	STATUS	DATE
	S S CO		NEW YORK	753350	0.950	33								
	4 C 0600	4110	GAS WELDING, HEAT CUTTING, AND METAL	6	6.5	J 01A	1	9	J	2	F	HA		45
			1,053											
	CARLSLE CORP		NEW YORK	169620	0.990	33								
	4 A 0500	0297	WIRE & CABLE, ELECTRICAL	6	6.5	C 01A	1	B	K	2	A	FA		17
	MEAGARA MACHINE & TOOL WORKS		NEW YORK	643200	1.000	33								
	2 H 1450	1124	PUNCHING AND SHAPING MACHINES	8	3.5	A 01A	1	B	J	2	H	KA		39
	DELCO ELECTRONICS CO		NEW YORK	258670	14.80	33								
	4 R 0500	1464	WIRE & CABLE, ELECTRICAL	6	3.5	J 01A	1	B	K	2	C	JA		20
	STERILIZATOR CO		NEW YORK	016930	1.880	33								
	4 C 0120	1464	HOSPITAL FURNITURE, EQUIPMENT, UTENS	6	6.5	J 01A	1	B	J	2	C	GA		22
	PANAL INDUSTRIES INC		NEW YORK	027350	1.920	33								
	1 D 0609	1244	AMMUNITION, OVER 125 MM	5	3.5	J 01A	1	B	J	2	D			1,193
	SERFCA FOODS CORP		NEW YORK	774200	2.100	33								
	4 D 013H	4567	FRUITS AND VEGETABLES	6	3.5	B 01A	1	B	J	2	C	FA		16
	SARCO CO INC		NEW YORK	763080	2.110	33								
	4 F 0700	4439	VALVES, NONPOWERED	6	6.5	C 01A	1	B	J	2	E	LA		17
	4 E 0700	4404	VALVES, NONPOWERED	6	4.5	C 01A	1	B	J	2	E	LA		13
			CONTRACTOR TOTAL			30								
	MASON CANNING CO		NEW YORK	576060	2.300	33								
	4 I 013H	9286	FRUITS AND VEGETABLES	6	6.5	C 01A	1	B	J	2	I	A9		268
	SMITH PACKAGING CORP		NEW YORK	280691	3.120	33								
	4 Y 013H	9263	PACKAGING AND PACKING BULK MATERIALS	6	6.5	J 01A	1	B	J	2	I	H9		43
	PAPA MARIO K SONS INC		NEW YORK	668100	3.150	33								
	4 F 0100	1164	CLOTHING, SPECIAL PURPOSE	6	3.5	J 01A	1	B	J	2	F	CA		128
	4 H 0100	1367	CLOTHING, SPECIAL PURPOSE	6	6.5	J 01A	1	B	J	2	G	CA		631
	4 H 0100	1380	HOSIERY, HONWEAR, AND CLOTHING ACCF	6	6.5	J 01A	1	B	J	2	G	F9		250
			CONTRACTOR TOTAL			3								
	F E H WFG CORP		NEW YORK	326220	3.605	33								
	4 F 0400	3057	SEEDS AND SPINDS	6	6.5	J 01A	1	B	J	2	F	A9		64
	FONGERA E & CO INC		NEW YORK	357190	3.740	33								
	4 G 0120	2841	DRUGS, BIOLOGICALS, AND OFFICIAL PFA	6	6.5	J 01A	1	B	J	2	G	LA		70
	CHELSEA LABORATORIES INC		NEW YORK	032973	4.030	33								
	4 F 0120	2892	DRUGS, BIOLOGICALS, AND OFFICIAL PFA	6	6.5	J 01A	1	B	J	2	F	GA		62

A B C D E F G H I J K L M N O P Q R S T U V W X Y Z

CONTRACTOR	DESCRIPTION	QUANTITY	UNIT	PRICE	TOTAL	DATE	STATUS	AMOUNT
MODERN MAID FOOD PRODUCTS INC	JAMAICA	NEW YORK	616583	4120	33	6 A 6 5 0 01A	1 R J 2 2 F TA	17
4 G 013H 9911 S-0013H-A-C0151	B C A 251 8920 000 R2	BAKERY AND CEREAL PRODUCTS						93
4 L 013H 8297 S-0013H-A-C0226	B C A 251 8920 000 R2	BAKERY AND CEREAL PRODUCTS						164
4 C 013H 8665 S-0013H-A-C0745	B C A 251 8920 000 R2	BAKERY AND CEREAL PRODUCTS						44
4 F 013H 8683 S-0013H-A-C0847	B C A 251 8920 000 R2	BAKERY AND CEREAL PRODUCTS						145
4 F 013H 8811 S-0013H-A-C0977	B C A 251 8920 000 R2	BAKERY AND CEREAL PRODUCTS						225
4 H 013H 9012 S-0013H-A-C0996	B C A 251 8920 000 R2	BAKERY AND CEREAL PRODUCTS						75
4 I 013H 9158 S-0013H-A-C1139	B C A 251 8920 000 R2	BAKERY AND CEREAL PRODUCTS						204
4 Y 013H 9167 S-0013H-A-C1162	B C A 251 8920 000 R2	BAKERY AND CEREAL PRODUCTS						107
CONTRACTOR TOTAL 1.078								
T R INC	JAMESTOWN	NEW YORK	45213	4130	33	6 A 6 5 4 01A	1 R J 2 2 L HA	16
4 L 0500 0867 S-00500-A-C1051	B C A 254 3110 000 C9F	BEARINGS, ANTI-FRICTION, UNMOUNTED						
HALO OPTICAL PRODUCTS INC	JOHNSTOWN	NEW YORK	426887	4160	33	6 A 6 5 5 J 01A	1 R J 2 2 G C9	141
4 G 0120 2854 S-00120-A-C05156	B C A 249 6540 000 C9B	OPTICIANS INSTRUMENTS, EQUIPMENT, +						
ISSACHOP MFG CO INC	LITTLE FALLS	NEW YORK	031822	4650	33	6 A 6 5 5 J 01A	1 R J 2 2 H F9	375
4 Y 0100 1456 S-00100-A-C1205	B C A 272 4415 000 A9	CLOTHING, SPECIAL PURPOSE						
Z A CO	MASPETH	NEW YORK	012069	4990	33	6 A 6 5 5 J 01A	1 R J 2 2 D HA	90
4 D 0400 2942 S-00400-A-C1920	B C A 251 5925 000 C9E	ELECTRICAL WARE AND SUPPLIES						
WEDJAY SYRUPS INC	MIDDLETOWN	NEW YORK	003578	5210	33	6 A 6 5 5 J 01A	1 R J 2 2 O G9	50
4 D 013H 8601 S-0013H-A-C0859	B C A 256 8925 000 R2	SUGAR, CONFECTIONERY, AND NUTS						71
4 G 013H 8914 S-0013H-A-C1038	B C A 256 8925 000 R2	SUGAR, CONFECTIONERY, AND NUTS						70
4 I 013H 9271 S-0013H-A-C1214	B C A 256 8925 000 R2	SUGAR, CONFECTIONERY, AND NUTS						
CONTRACTOR TOTAL 1.91								
ROCK SAM UNIFORM & CIVILIAN CAP CO	NEW YORK	NEW YORK	126040	5740	33	6 A 6 5 5 J 01A	1 R J 2 2 F D9	97
4 G 0100 1274 S-00100-A-C1073	B C A 251 8405 000 A9	OUTERWEAR, HATS						
COLONIAL METALS CO	NEW YORK	NEW YORK	208260	5740	33	6 A 6 5 5 B 01A	1 R K 2 2 D G9	58
4 D 0500 1999 S-00500-A-C1691	B C B 251 9640 000 C9E	NONFERROUS BASE METAL REFINERY + INT						
RODMELL COOP	NEW YORK	NEW YORK	734660	5740	33	6 A 6 5 5 J 01A	1 R J 2 2 F R9	25
4 Y 0400 4124 S-00400-A-C2487	B C A 251 5945 000 A7	CABLE CORO + WIRE ASSEMBLIES COMMUNI						
CITY TOTAL 1.80								
WHITBROOK INC	ROCKWICH	NEW YORK	032596	6030	33	6 A 6 5 5 J 01A	1 R J 2 2 C FA	24
4 G 0120 1513 S-00120-A-C0586	B C B 258 6505 000 C9H	DRUGS, BIOLOGICALS, AND OFFICIAL REA						
INDUSTRIAL COMPONENTS CORP	ROCKWICH	NEW YORK	487800	6100	33	6 A 6 5 5 J 01A	1 R K 2 2 C TA	29
4 G 0500 1634 S-00500-A-C0854	B C B 253 6165 000 C9E	WIRE + CABLE, ELECTRICAL						17
4 F 0400 2741 S-00400-A-C0805	B C B 253 6165 000 C9E	WIRE + CABLE, ELECTRICAL						19
4 H 0400 5041 S-00500-A-C0905	B C B 253 6165 000 C9E	WIRE + CABLE, ELECTRICAL						
CONTRACTOR TOTAL 6.6								

A R CCCC 0000 EEEEEE F G H I J K L M N O P Q R S T U V W X Y Z Z

GAPLOCK INC. NEW YORK 371145 6400 33 6 A 6 5 C 01A 1 R J 2 2 H LA 20
MATCH CHEMICAL CO INC NEW YORK 632329 6675 33 6 A 6 5 J 01A 1 R J 2 2 B FA 23

VELAN VALVE COFF PLATTSBURGH NEW YORK 915572 6710 33 6 A 6 5 B 01A 1 R K 2 2 G C4 39
LALLY MFG CORP PORT LYDEN NEW YORK 541050 6460 33 6 A 6 5 J 01A 1 B J 2 2 A GR 530

SUPPHE OIL CO RICHMOND HILL NEW YORK 464435 7120 33 6 A 6 5 J 01A 1 R J 2 2 G TA 17
PAPA MARIO & SONS INC RICHMOND HILL NEW YORK 666100 7130 33 6 A 6 5 J 01A 1 B J 2 2 A JB 70

ASTRODYNE INC ROCKVILLE CENTER NEW YORK 075677 7250 33 6 A 6 5 J 01A 1 R J 2 2 I 09 36
CYPRUS MINES CORP ZONE NEW YORK 244005 7270 33 6 A 6 5 C 01A 1 R K 2 2 K HA 71

CYPBUS WISE & CARLE CO ZONE NEW YORK 007327 7270 33 6 A 6 5 C 01A 1 R K 2 2 H 09 190
CONTRACTOR TOTAL 330 601

----- PAGE 26 -----

ACCOUNT NUMBER	DESCRIPTION	AMOUNT	DATE	STATUS	OTHER
4 C 0120 1360 S-00120-R-00515	BRISTOL MYERS CO SYRACUSE NEW YORK	136745	8390	33	1 R J 2 2 C 0A
4 C 0120 2747 S-00120-R-04909	RESPONSABLE PRODUCTS INC UTICA NEW YORK	026763	8680	33	1 R J 2 2 G 1A
4 K 0120 0046 S-00120-7-05265	SPECTRONICS CORP WESTBURY NEW YORK	817540	9230	33	1 R J 2 2 I 08
4 C 0760 3164 S-00700-9-01784	BOSTON PNEUMATICS INC WOODSIDE NEW YORK	128655	9480	33	1 R K 2 2 C KA
4 I 0120 3473 S-00120-R-01285	NOBLE PTME PRODUCTS CO YONKERS NEW YORK	039977	9530	33	1 R J 2 2 I LA
STATE TOTAL		11,863			

Company Name	Product Description	Quantity	Unit Price	Total	Material
A R CCCC 0000	TTTT U V W X Y 77			\$1000	
OSTERHECK CO	NCAP	3140			
4 R 0400 1892	6 A 6 5 J 01A				1 B J 2 2 0 IA
	NCAP				
247					
AERQUIP CO	NCAP	3430			
4 G 0700 5444	6 A 4 5 R 01A				1 R K 2 2 G JA
	NCAP				
13					
RUMPHY TEXTILE MILL	NCAP	3650			
4 H 0100 0691	6 A 3 5 J 01A				1 R J 2 2 A LA
	NCAP				
335					
MUPLINGTON INDUSTRIES INC	NCAP	5270			
4 F 0100 120X	6 A 3 5 C 01A				1 R J 2 2 F 09
	NCAP				
216					
FLLTS A M HOSTIFY CO	NCAP	5000			
4 J 0100 0073	6 A 3 5 J 01A				1 B J 2 2 J HA
	NCAP				
464					
STATE TOTAL				1,276	

A B C D E F G H I J K L M N O P Q R S T U V W X Y Z Z \$10000

WYCOFF INDUSTRIES INC. AMBLEP PA 64775 00A0 19 6 A 3 5 J 01A 1 R J 2 2 F FA 14
4 E 0500 2403 S-00400-A-C2367 R C A 260 5330 000 C9F PACKING AND GASKET MATERIALS 6 A 5 5 J 01A 1 R J 2 2 F FA 12
4 F 0500 2550 S-00400-A-C2421 R C A 260 5330 000 C9F PACKING AND GASKET MATERIALS 6 A 5 5 J 01A 1 R J 2 2 F FA 12
CONTRACTOR TOTAL 26

LOSD CORP CAMBRIDGE SPCS PA 557915 0650 39 6 A 6 5 J 01A 1 R J 2 2 K FA 18
4 K 0400 0731 S-00400-A-C0409 R C A 252 9330 000 C9F PLASTICS FABRICATED MATERIALS 6 A 6 5 J 01A 1 R J 2 2 K FA 19
4 L 0400 0929 S-00400-A-C0409 R C A 252 9330 000 C9F PLASTICS FABRICATED MATERIALS 6 A 6 5 J 01A 1 R J 2 2 K FA 19
CONTRACTOR TOTAL 57

GENTEX CORP CARMONDALE PA 386160 0670 39 6 A 4 5 J 01A 1 R K 2 2 K 08 18
4 K 0500 0315 S-00500-7-00026 R C A 256 4020 000 C9F FIBER ROPE, CORDAGE, AND TWINE 6 A 4 5 J 01A 1 R K 2 2 K 08 18
MGNFIL LABORATORIES INC FORT WASHINGTON PA 592725 176A 39 6 A 3 5 C 01A 1 R J 2 2 0 H8 19
4 D 0120 1764 S-00120-A-C0575 R C A 260 6505 000 C9R DRUGS, BIOLOGICALS, AND OFFICIAL REA 6 A 3 5 C 01A 1 R J 2 2 0 H8 19

STANDARD PRESSED STEEL CO JENKINTOWN PA 825240 2395 39 6 A 4 5 C 01A 1 R J 2 2 L FA 20
4 L 0500 0710 S-00500-7-00096 R C A 260 5310 000 C9F NUTS AND WASHERS 6 A 4 5 C 01A 1 R J 2 2 L FA 20
4 J 0500 0835 S-00500-7-00132 R C A 260 5310 000 C9F NUTS AND WASHERS 6 A 4 5 C 01A 1 R K 2 2 B H8 69
4 B 0500 1413 S-00500-7-00132 R C A 260 5310 000 C9F NUTS AND WASHERS 6 A 4 5 C 01A 1 R K 2 2 B H8 18
4 A 0500 1010 S-00500-7-00132 R C A 260 5310 000 C9F NUTS AND WASHERS 6 A 4 5 C 01A 1 R K 2 2 A GA 10
4 C 0500 1968 S-00500-A-C2122 R C A 260 5310 000 C9F NUTS AND WASHERS 6 A 6 5 9 01A 1 R J 2 2 C FA 15
4 D 0500 2156 S-00500-A-C2292 R C A 260 5310 000 C9F NUTS AND WASHERS 6 A 6 5 0 01A 1 R J 2 2 C FA 10
4 F 0500 2670 S-00500-A-C3196 R C A 260 5310 000 C9E NUTS AND WASHERS 6 A 6 5 C 01A 1 R J 2 2 F LA 12
4 F 0500 2756 S-00500-A-C3258 R C A 260 5310 000 C9E NUTS AND WASHERS 6 A 3 5 C 01A 1 R J 2 2 F JA 13
4 G 0500 4000 S-00500-A-C3464 R C A 260 5310 000 C9E NUTS AND WASHERS 6 A 6 5 C 01A 1 R J 2 2 G TA 14
4 H 0500 6099 S-00500-A-00093 R C A 260 5310 000 C9F NUTS AND WASHERS 6 A 4 5 A 01A 1 R J 2 2 H LA 10
CONTRACTOR TOTAL 195

S K F INDUSTRIES INC KING OF PRUSSIA PA 753000 244R 39 6 A 6 5 R 01A 1 R J 2 2 F R9 34
4 E 0500 2360 S-00500-A-C2771 R C A 260 3110 000 C9F BEARINGS, ANTI-FRICTION, UNMOUNTED 6 A 6 5 R 01A 1 R J 2 2 F R9 34
4 G 0500 4360 S-00500-A-C375A R C A 260 3110 000 C9F BEARINGS, ANTI-FRICTION, UNMOUNTED 6 A 6 5 R 01A 1 R J 2 2 G C9 12
CONTRACTOR TOTAL 46

ETIQU BUSINESS SYSTEMS INC MOOSTIC PA 556757 3325 39 6 A 4 5 R 01A 1 R J 2 2 K A4 125
4 K 0400 0701 S-00400-7-00153 R C A 256 7530 000 C9F STATIONERY AND RECORD FORMS 6 A 4 5 R 01A 1 R J 2 2 K A4 125
4 A 0400 1643 S-00400-7-00153 R C A 256 7530 000 C9E STATIONERY AND RECORD FORMS 6 A 4 5 R 01A 1 R J 2 2 A CA 62
4 D 0400 2050 S-00400-7-00153 R C A 256 7530 000 C9E STATIONERY AND RECORD FORMS 6 A 4 5 R 01A 1 R J 2 2 D FA 75
CONTRACTOR TOTAL 262

UNITED STATES STEEL CORP MUNHALL PA 905A20 3415 39 6 A 6 5 C 01A 1 R K 2 2 K CA 10
4 K 0500 0441 S-00500-A-C0573 R C A 262 9515 000 C9F PLATE, SHEET, AND STRIP IRON AND STE 6 A 6 5 C 01A 1 R K 2 2 K CA 10

AMATEX CORP HOPKINTOWN PA 019A17 3660 39 6 A 3 5 J 01A 1 R J 2 2 H P9 513
2 I 1959 6916 A-00104-A-C0960 R C A 260 4730 000 A3 FITTINGS AND SPECIALTIES HOSE, PIPE, 6 A 3 5 J 01A 1 R J 2 2 H P9 513

P S G INDUSTRIES INC OFOKASIF PA 662107 3985 39 6 A 6 5 J 01A 1 R J 2 2 F C9 161
4 F 0500 3424 S-00500-A-C1396 R C A 260 6645 000 C9E COSSHOPE, TEMPERATURE + HUMIDITY MEA 6 A 6 5 J 01A 1 R J 2 2 F C9 161

***** F G H I J J J K K K L L L M M N N N N N N N N N N N N N N N N O P Q R S T T T T U V W X Y Z Z \$10001

ACTION MFG CO	PHILADELPHIA	PA	001061	4005	39	5 A 7 5 J 01A	1 B J 2 2 Y	180
I 1 8009 2440 A-00000-1-C0177	H C A 260 1325 FAC AG	FOMAS						
AMASSADUE SEAT CO INC	PHILADELPHIA	PA	056615	4005	39	6 A 6 5 J 01A	1 B J 2 2 A CA	15
4 A 0120 0919 S-00170-A-C0204	B C A 260 6540 000 C98 OPTICIANS INSTRUMENTS, EQUIPMENT, +							
4 I 0120 1674 S-00170-A-C0366	R C A 260 6540 000 C98 OPTICIANS INSTRUMENTS, EQUIPMENT, +							
CONTRACTOR TOTAL								77
FALCON CANDY CO	PHILADELPHIA	PA	021086	4005	39	6 A 6 5 J 01A	1 B J 2 2 I M9	529
4 I 0138 9270 S-00138-A-C07040	R C A 260 8925 000 02 SUGAR, CONFECTIONERY, AND NUTS							
GENERAL ELECTRIC CO	PHILADELPHIA	PA	380520	4005	39	6 A 6 5 C 01A	1 B J 2 2 R FA	17
4 C 0400 2185 S-00400-A-C0767	R C A 260 5975 000 C98 ELECTRICAL HARDWARE AND SUPPLIES							
KEYSTONE CARBID COCP	PHILADELPHIA	PA	005597	4005	39	6 A 6 5 J 01A	1 B J 2 2 R GA	51
4 C 0400 7172 S-00400-A-C1190	R C A 260 5940 000 C98 LUGS, TERMINALS, AND TERMINAL STRIPS							
MEDLEY TOOL & MOLD CO INC	PHILADELPHIA	PA	003980	4005	39	6 A 6 5 J 01A	1 B J 2 2 F JA	55
4 F 0400 3422 S-00400-A-C1041	A C A 260 5975 000 C98 ELECTRICAL HARDWARE AND SUPPLIES							
4 H 0400 4469 S-00400-A-C3047	A C A 260 5975 000 C98 ELECTRICAL HARDWARE AND SUPPLIES							
CONTRACTOR TOTAL								74
SCHIMMANN DAVID & SONS	PHILADELPHIA	PA	777210	4005	39	6 A 3 5 J 01A	1 B J 2 2 H M9	164
4 M 0100 1409 S-00100-A-C1163	R C A 260 8405 000 A9 OUTFEAR, MENS							
4 N 0100 1428 S-00100-A-C1182	R C A 260 8440 000 A9 HOSIERY, HANDWEAR, AND CLOTHING ACCE							
4 I 0100 1442 S-00100-A-C1182	R C A 260 8440 000 A9 HOSIERY, HANDWEAR, AND CLOTHING ACCE							
CONTRACTOR TOTAL								82
CITY TOTAL								
LONG ISLAND STRUCTURAL STEEL CORP	PHILADELPHIA	PA	011116	4040	39	6 A 6 5 J 01A	1 A K 2 2 A CA	19
4 A 0500 1063 S-00500-A-C1774	R C R 262 9520 000 C98 STRUCTURAL SHAPES, IRON AND STEEL							
GOYTHREYS INC	SCRANTON	PA	421853	4520	39	6 A 6 5 J 01A	1 B J 2 2 C FA	30
4 C 0500 1768 S-00500-A-C0264	R C A 256 3940 000 C98 FLOCKS, TACKLE, SINGING, AND SLINGS							
LEMMON PHARMACAL CO	SELLERSVILLE	PA	003244	4535	39	6 A 3 5 J 01A	1 B J 2 2 Y M9	21
4 I 0120 3518 S-00120-A-C1370	R C A 260 6505 000 C98 DRUGS, BIOLOGICALS, AND OFFICIAL REF							
GENTEX CORP	SIMPSON	PA	386168	4663	39	6 A 6 5 J 01A	1 B J 2 2 I FA	364
3 I 0530 0526 F-4160A-A-C1196	B C A 256 8475 000 A9 SPECIALIZED FLIGHT CLOTHING AND ACCE							
PARKER STEEL EQUIPMENT CO INC	SIMPSON	PA	033122	4663	39	6 A 6 5 J 01A	1 B J 2 2 K CA	118
4 L 0400 0906 S-00400-A-C0629	A C A 256 3090 000 C98 MISCELLANEOUS MATERIALS HANDLING EQU							
4 H 0400 4053 S-00400-A-C0629	A C A 256 3090 000 C98 MISCELLANEOUS MATERIALS HANDLING EQU							
CONTRACTOR TOTAL								236-
CITY TOTAL								
F S D COAL SALES CO	TYREVOTON	PA	826100	5190	39			

ACCOUNT	DEBIT	CREDIT	BALANCE	DATE	DESCRIPTION	CHECK NO.	AMOUNT	CHECK	DATE	BALANCE
F A D COAL SALES CO			326100	5190	PA					
6 J 0400	0211	5-00600-7-01672		6 A 5 5 J 01A	IRON AND STEEL	6 A 3 5 C 01A		1 A K 1 2 J DA	109	
JESSOP STEEL CO			510480	5195	PA					
6 C 0500	1706	5-00500-R-02047		6 A 3 5 C 01A	IRON AND STEEL	6 A 3 5 C 01A		1 A K 2 2 C FA	14	
GRAYBAR ELECTRIC CO INC			408160	5615	PA					
6 L 0400	1263	5-00600-R-00663		6 A 5 5 C 01A	ELECTRICAL HARDWARE AND SUPPLIES	6 A 5 5 C 01A		1 A J 2 2 L HA	23	
6 L 0400	1271	5-00600-R-00663		6 A 5 5 C 01A	ELECTRICAL HARDWARE AND SUPPLIES	6 A 5 5 C 01A		1 A J 2 2 L DA	12	
6 L 0400	1272	5-00600-R-00663		6 A 5 5 C 01A	ELECTRICAL HARDWARE AND SUPPLIES	6 A 5 5 C 01A		1 A J 2 2 L DA	22	
6 L 0400	1266	5-00600-R-00692		6 A 5 5 C 01A	ELECTRICAL HARDWARE AND SUPPLIES	6 A 5 5 C 01A		1 A J 2 2 L HA	43	
CONTRACTOR TOTAL								100		
STATE TOTAL								47		
								147		
								3,114		

0000	SCAR	A13000	0060	61			
0000	SCAR				6 A 6 5 C 01A	1 B J 2 2 L 1A	162
0000	SCAR	021071	0760	41			
0000	SCAR				6 A 4 5 J 01A	1 H J 2 2 H 6A	473
	TOTAL						
							515

A B C D E F G H I J K L M N O P Q R S T U V W X Y Z

SOURCE: 1980-1981
C C A 241 5075 000 OF ELECTRICAL HARDWARE AND SUPPLIES 1760 43 16
C C A 241 5075 000 OF ELECTRICAL HARDWARE AND SUPPLIES 1760 43 16
CONTRACTOR TOTAL 2 27
STAFF TOTAL 2 17

COMPANY NAME	STATE	ADDRESS	CITY	ZIP	QUANTITY	UNIT PRICE	TOTAL PRICE	DATE
STAS SYNTHETIC FIBER CORP	NEW YORK	92377	2136	43	17A	1	17A	17
4 F 0580 2514 S-00500-4-02874	E C A	320 4020 000	C9F	FIBER ROPE, CORDAGE, AND TWINE	6 A	3 4	J 17A	1 B K 2 2 E JA
LICHTENSTEIN A G A ASSOC INC	FLORIDA	005138	2700	33	5 R	J 04	5 R J 1 2 K	46
5 K 0051 0007 A-00051-7-00070	C C O	356 2694 000	C2	SERVICE OTHER THAN P641 - 9698	8 A	5 J 04	5 R J 1 2 K	46
HALO OPTICAL PRODUCTS INC	NEW YORK	426827	4160	33	1 9	J 2 2 T C9	1 9 J 2 2 T C9	30
4 T 0120 3562 S-00120-8-05285	H C A	340 6540 000	C9B	OPTICIANS INSTRUMENTS, EQUIPMENT, +	6 A	3 5 J 07	1 9 J 2 2 T C9	30
GIBSON & GUSHMAN INC	SUFFOLK	390450	8450	33	1 9	J 1 2 J	1 9 J 1 2 J	249
5 J 0051 0002 0-00051-7-00076	O C O	353 2986 000	C2	WIVES + HARBORS, OR FLOOD CONTROL	8 A	7 4 J 01R	1 9 J 1 2 J	249
STATE TOTAL				342				

A B C D E F G H I J K L M N O P Q R S T U V W X Y Z

ELKINS SINK INC 4 P 0120 1071 S-00120-A-C0399 STATE TOTAL 1

CHERRY HILL R C A 390 6505 000 CASH DRUGS, BIOLOGICALS, AND OFFICIAL PFA 6 A Y R 0000 0 0 J 2 2 R DA

NEW JERSEY 107940 0815 41 19

\$(000)

A B C D E F G H I J K L M N O P Q R S T U V W X Y Z \$ ()

OMNI WAVE ELECTRONICS CORP
3 K F 0 4 0 3 7 7 F - 0 9 0 0 3 - 8 - 0 3 0 3 5 R C A 3 1 6 1 2 7 0 A F L 0 7
STATE TOTAL 1
GLoucester MASS 00345A 1020 27
AIRCRAFT GUNBERY PIPE CONTROL COMPO N A 4 3 5 J 0 2 1 A - J 2 2 J 0 8
67 67

A B C D E F G H I J K L M N O P Q R S T U V W X Y Z

UNIVERSAL WIRE PRODUCTS INC. NORTH HAVEN CONN 06470 0960 07 17
5 C 0500 1537 S-00500-H-0022A H C A 317 4010 000 C9F CHAIN AND WIRE ROPE 1 B K 2 2 C GA

TOTAL 1

A H 0000 0000 E E E E E E E E E E F F G H I J J J K K K K L L L M M M N N N N N N N N N N N N N N N N N N N O P Q R S T T T T U V W X X X Y Y Z Z \$1000

ELECTRONIC MEMORIES & MAGNETICS HAWTHORNE CALIFORNIA 305835 2960 05 8 A 3 5 A 1001 5 R J 1 2 J I A 1 A

3 J 0A13 0000 F-04407-7-00201 B C C 319 M871 000 S1 ADP AND/OR FAM EQUIPMENT 3880 05 A 4 3 5 A 1002 1 R J 1 2 L K 7 1 3

MCCPAM EDISON CO LOS ANGELES CALIFORNIA 5905A0 3880 05 A 4 3 5 A 1002 1 R J 1 2 L K 7 1 3

Y L 0A13 0004 F-04407-R-C0004 R C C 319 J519 000 S1 EQUIPMENT OTHER THAN J501-J51A 037507 3880 05 8 A 3 5 J 0000 0 0 J 1 2 A 1 1 9

MEYERS J A & CO INC LOS ANGELES CALIFORNIA 037507 3880 05 8 A 3 5 J 0000 0 0 J 1 2 A 1 1 9

5 G 0A73 0007 A-00073-R-C0047 R C A 319 1906 000 S1 ART 132 132

CITY TOTAL 132

DAY CITIES DISPOSAL CO NEWTON AFB CALIFORNIA 100765 4740 05 8 A 3 3 J 0000 0 0 J 1 2 K I A 6 7

3 K 0A13 0055 F-04407-R-C0007 D C C 332 5712 000 S1 GARAGE COLLECTION 297330 6760 05 6 A 3 4 J 019 1 R K 2 2 F I A 1 2

EDWARDS E H CO SOUTH SAN FRANCISCO CALIFORNIA 297330 6760 05 6 A 3 4 J 019 1 R K 2 2 F I A 1 2

4 F 0500 2680 S-00500-A-C243A D C A 341 4010 000 C9F CHAIN AND WIRE PUFF 229 229

STATE TOTAL 5

R E P O R T F O R M A T

L I N E 1.

ITEM 6 CONTRACTOR NAME
ITEM 7 CITY NAME
ITEM 7 STATE OR COUNTRY NAME
ITEM 6 CONTRACTOR CODE
ITEM 7 CITY CODE
ITEM 7 STATE OR COUNTRY CODE

L I N E 2.

A. SUBMITTING DEPARTMENT
B. REPORT MONTH
C. PURCHASING OFFICE
D. ITEM 1A REPORT NUMBER
E. ITEM 2 CONTRACT NUMBER
F. DEPARTMENT
G. ITEM 2A ACTIVITY
H. ITEM 2B FISCAL YEAR
I. ITEM 2C SERIAL NUMBER
J. ITEM 3 CORRECTION OF PRIOR 350
K. ITEM 5A MINORITY BUSINESS FIRM
L. ITEM 7C MULTI-YEAR PROCUREMENT
M. ITEM 8 SUBJECT WALSH-HEALEY / SERVICE CONTRACT ACT
N. ITEM 9 LAROP SURPLUS AREA
O. ITEM 10A FSC OR SERVICE CODE
P. ITEM 10B SYSTEM OR EQUIPMENT CODE
Q. ITEM 10C DDCP CODE
R. ITEM 11 DESCRIPTION OF COMMUNITY OR SERVICE
S. ITEM 12 COORDINATED PROCUREMENT
T. ITEM 13 SYNOPSIS OF PROPOSED PROCUREMENT
U. ITEM 14 KIND OF PROCUREMENT ACTION
V. ITEM 15 CONTRACT PLACEMENT
W. ITEM 16 TYPE OF BUSINESS CONCERN
X. ITEM 17 NEGOTIATION EXCEPTION
Y. ITEM 18 EXTENT OF COMPETITION IN NEGOTIATION
Z. ITEM 19 CERTIFIED COST OR PRICING DATA
AA. ITEM 20 TYPE OF CONTRACT
AB. ITEM 21 CONTRACT ADMINISTRATION
AC. ITEM 21A COST ACCOUNTING STANDARDS
AD. ITEM 22 AWARD MONTH
AE. ITEM 23 EST. COMPLETION MONTH + YEAR
AF. ITEM 24 DOLLARS IN THOUSANDS

SECTION 2

TIE-BID PREFERENCE AWARDS IN LABOR SURPLUS AREAS

Contract ID	Agency	Fiscal Year	Program	Activity	Amount	Month	Day	Page
4 K 013H 0184 5-0013H-R-C0534	MONQUEL	6 A	WISCONSIN	CONDIMENTS AND RELATED PRODUCTS	0670	50	1 R J 2 2 J DA	42
4 K 013H 0184 5-0013H-R-C0606	R2	6 A	WISCONSIN	CONDIMENTS AND RELATED PRODUCTS	0670	50	1 R J 2 2 J DA	40
CONTRACTOR TOTAL								
4 K 0700 06A9 5-00700-7-C0365	MACHINEFFE	6 A	WISCONSIN	PIPE FIGHTING EQUIPMENT	3150	50	1 H J 2 2 K DA	34
4 J 013H 0045 5-0013H-7-C2095	MENOMONTF	6 A	WISCONSIN	BEVERAGES, NONALCOHOLIC	5330	50	1 B J 2 2 J FA	510
STATE TOTAL								

ISLAND CREEK COAL CO	ALLINGDALE										
4 J 0600 0663 S-00600-7-016A3	B C A 275 9110 000	AMB FUELS, SOLID	HVA	501060	0055	49	6 A 6 5 C 01A	1 R K 1 2 J G8	2,514		
PITTSBORG COAL SALES CORP	FARLING		HVA	6A59A3	0775	49	6 A 3 5 C 01A	1 R K 1 2 J C9	41		
4 C 0600 2085 S-00600-8-01657	D C A 245 9110 000	AMB FUELS, SOLID									
LESLIE R COAL CO	ELKINS		HVA	041180	0880	49	6 A 3 5 J 01A	1 R K 1 2 G G9	561		
4 C 0600 2765 S-00600-8-016A1	F C A 270 9110 000	AMB FUELS, SOLID									
MOUNTAIN STATE IMPLANTABLES INC	FENWICK		HVA	024547	0975	49	6 A 6 5 J 01A	1 R J 2 2 G 09	36		
4 C 0700 5524 S-00700-9-C3775	B C A 275 4220 000	C9E MARINE LIFESAIVING AND DIVING EQUIPME									
MITCHELL ENERGY CORP	TAEGER		HVA	038151	1420	49	6 A 3 5 J 01A	1 R K 1 2 F G9	51		
4 C 0600 2727 S-00600-8-01682	A C A 247 9110 000	AMB FUELS, SOLID									
STEVENS CHARLES H CO	KFYSEF		HVA	016913	1530	49	6 A 3 5 J 01A	1 R J 2 2 J L7	25		
4 J 0600 0053 S-00600-8-C0201	R C A 214 7125 000	C9E CABINETS, LOCKERS, BINS, AND SHELVIN									
4 N 0400 2476 S-00400-8-C1543	B C A 218 7125 000	C9E CABINETS, LOCKERS, BINS, AND SHELVIN									
CONTRACTOR TOTAL 42											
PITTSBORG COAL SALES CORP	LORANN		HVA	6A5983	1680	49	6 A 7 5 C 01A	1 R K 1 2 I C9	143		
4 I 0600 3077 S-00600-8-016A3	F C B 245 9110 000	AMB FUELS, SOLID									
GOODRICH B F CO	RICHMOND		HVA	401100	2600	49	8 A 3 5 C 01A	1 R J 2 J G8	74		
2 L 1560 0729 A-003A3-A-C0029	B C A 275 4220 000	A1C MARINE LIFESAIVING AND DIVING EQUIPME									
RITCHIE RUMBER & PLASTIC CO	SMITHVILLE		HVA	016054	2775	49	6 A 3 5 J 01A	1 R K 2 2 F 09	113		
4 F 0700 4185 S-00700-8-C2479	R C A 266 4220 000	A3 MARINE LIFESAIVING AND DIVING EQUIPME									
4 G 0700 5576 S-00700-8-C3394	R C A 266 4220 000	C9E MARINE LIFESAIVING AND DIVING EQUIPME									
CONTRACTOR TOTAL 156											
RUDROFCRAFTERS OF WVA	SMITHVILLE		HVA	0156A3	2775	49	6 A 6 5 J 01A	1 R J 2 2 C J8	45		
4 C 0700 2770 S-00700-8-C1733	B C A 266 4220 000	C9E MARINE LIFESAIVING AND DIVING EQUIPME									
CITY TOTAL 201											
STATE TOTAL 12 3,643											

ACCOUNT NUMBER	DESCRIPTION	AMOUNT	DATE	STATE	TOTAL
BYRD FOODS, INC.					
4 T 013H 9294 S-00134H-N-00102	PARKSLEY VIRGINIA	1525.31	30A0	47	
	R C A 210 0915 000 02		6 A 6 5 J 01A	1 R J 2 2 T L A	105
ASSOCIATED INTERNATIONAL CHEMICALS	POPTSMOUTH VIRGINIA	078719	3210	47	
4 K 0600 0521 S-00400-7-02782	R C B 239 6A10 000 09E		6 A 6 5 J 01A	1 R J 2 2 K C A	73
NATIONAL COLLIFRIES INC.	VANSANT VIRGINIA	022709	39A5	47	
4 J 0600 0634 S-00600-7-01682	R C B 275 9110 000 000		6 A 3 5 C 01A	1 R K 1 2 J G A	1,45A
MILCOM SYSTEMS CORP	VIRGINIA BEACH VIRGINIA	607390	6050	47	
2 J 1850 0063 N-00600-7-00445	R C A 239 5895 000 07		6 A 6 5 J 01A	3 R J 2 J I A	90
STATE TOTAL					
					1,725

A B C D E F G H I J K L M N O P Q R S T U V W X Y Z 0 1 2 3 4 5 6 7 8 9

ACCOUNT	STATE	DATE	AMOUNT	DESCRIPTION
STANDARD PRESSED STEEL CO 4 C 0500 1481 S-00500-A-C1974	PA	6 A 3 5 C 1013 1 R J 2 2 C DA	2395 39	JENKINTOWN NUTS AND WASHERS
GENERAL ATOMICS CORP 4 K 0980 0151 S-00900-A-C0061	PA	6 A 3 1 A 0000 0 0 J 2 2 J GA	379020 6005 39	PHILADELPHIA ELECTRON TUBES AND ASSOCIATED HARDWARE
PAULSEN WAREHOUSE COOP 4 F 0500 2724 S-00500-A-C2431	PA	6 A 3 4 J 17A 1 B K 2 2 F LA	5000 39	SUNBURY CHAIN AND WTRF ROPE
STATE TOTAL		92	3	

A B C D E F G H I J K L M N O P Q R S T U V W X Y Z \$ (0 0 0)

AURORA CONTROL STATE TOTAL 1
S J C M 7 0 0 1 0 A - 0 0 0 6 7 - 6 - C 0 0 0 1 G C A 3 7 A 6 1 1 5 0 0 0 C 9 F G E N E R A T O R S A N D G F N E R A T O R S W A S H I N G T O N 0 1 1 0 0 4 2 0 6 0 4 A
1 9

SECTION 3

CERTIFIED LABOR SURPLUS AREA SET-ASIDE AWARDS

REPORT FORMAT

LINE 1.

ITEM 6 CONTRACTOR NAME
 ITEM 7 CITY NAME
 ITEM 7 STATE OR COUNTRY NAME
 ITEM 6 CONTRACTOR CODE
 ITEM 7 CITY CODE
 ITEM 7 STATE OR COUNTRY CODE

LINE 2.

ITEM 5 SUBMITTING DEPARTMENT
 ITEM 10 REPORT MONTH
 ITEM 10 PURCHASING OFFICE
 ITEM 7 REPORT NUMBER
 ITEM 7 CONTRACT NUMBER
 ITEM 2A DEPARTMENT
 ITEM 2B ACTIVITY
 ITEM 2C FISCAL YEAR
 ITEM 2D SERIAL NUMBER
 ITEM 3 CORRECTION OF PRIOR 350
 ITEM 5A MINORITY BUSINESS FIRM
 ITEM 7C MULTI-YEAR PROCUREMENT
 ITEM 8 SUBJECT WALSH-HEALEY / SERVICE CONTRACT ACT
 ITEM 9 LABOR SURPLUS ARFA
 ITEM 10A FSC OR SERVICE CODE
 ITEM 10B SYSTEM OR EQUIPMENT CODE
 ITEM 10C DDCP CODE
 ITEM 11 DESCRIPTION OF COMMODITY OR SERVICE
 ITEM 12 COORDINATED PROCUREMENT
 ITEM 13 SYNOPSIS OF PROPOSED PROCUREMENT
 ITEM 14 KIND OF PROCUREMENT ACTION
 ITEM 15 CONTRACT PLACEMENT
 ITEM 16 TYPE OF BUSINESS CONCERN
 ITEM 17 NEGOTIATION EXCEPTION
 ITEM 18 EXTENT OF COMPETITION IN NEGOTIATION
 ITEM 19 CERTIFIED COST OR PRICING DATA
 ITEM 20 TYPE OF CONTRACT
 ITEM 21 CONTRACT ADMINISTRATION
 ITEM 21A COST ACCOUNTING STANDARDS
 ITEM 22 AWARD MONTH
 ITEM 23 EST. COMPLETION MONTH * YEAR
 ITEM 24 DOLLARS IN THOUSANDS

A H CCC 0000 FFFFEFFEEFFEE F G H I J J J K K K L L L M M M N N N N N N N N N N N N N N N N N N N O P Q R S T T T U V W X Y Z Z \$10001

CAL WESTERN PACKAGING CORP
4 L 013H A191 S-0013H-A-C0641 R C A 499 8945 000 B2 COMPTON CALIFORNIA 156302 1300 05 6 A 6 5 J 01A 1 B J 2 1 K AA 102

NATIONAL PIPE ROSE CORP
4 K 0700 066A S-00700-A-C0642 R C A 499 4210 000 C9E CALIFORNIA 634700 1390 05 6 A 3 5 J 01A 1 B K 2 2 K AA 314
4 L 0700 1463 S-00700-A-C0617 R C A 499 4210 000 C9E PIPE FIGHTING EQUIPMENT 6 A 3 5 J 01A 1 B K 2 2 L JA 100
4 C 0700 2875 S-00700-A-C1501 R C A 499 4210 000 C9E PIPE FIGHTING EQUIPMENT 6 A 3 5 J 01A 1 B K 2 2 C AA 229

CONTRACTOR TOTAL 3 643
CITY TOTAL 4 745

KAYNAK MFG CO INC
4 A 0500 0914 S-00500-A-C123A R C A 499 5310 000 C9F FULLERTON CALIFORNIA 522470 2560 05 6 A 6 5 A 01A 1 B J 2 2 A DA 15
4 B 0500 1365 S-00500-A-C1226 R C A 499 5310 000 C9E NUTS AND WASHERS 6 A 3 5 C 01A 1 B J 2 2 B FA 17

CONTRACTOR TOTAL 2 33

ROMAN CORP
4 L 0500 0362 S-00500-A-C0509 R C A 499 6145 000 C9E LOS ANGELES CALIFORNIA 036546 3880 05 6 A 6 5 J 01A 1 B K 2 2 K AA 20

HILLS INDUS COFFEE INC
3 H JA27 1149 S-0013H-2-50032 R C A 499 8955 000 B2 SAN FRANCISCO CALIFORNIA 460320 6090 05 6 A 6 5 A 01A 5 B J 1 2 H HA 15

N C C FOOD CORP
4 K 013H A095 S-0013H-A-C000A R C A 499 8915 000 B2 SAN JOSE CALIFORNIA 630708 6130 05 6 A 6 5 B 01A 1 B J 2 2 J DA 46

STOFFER C W
4 J 013H A055 S-0013H-A-C0521 R C A 499 8915 000 B2 SAN JOSE CALIFORNIA 837150 6130 05 6 A 6 5 J 01A 1 B J 2 2 J AA 34

CASE SWAYNE CO INC
4 J 013H 8041 S-0013H-7-C041A R C A 499 8915 000 B2 SANTA ANA CALIFORNIA 174600 6300 05 6 A 6 5 J 01A 1 B J 2 2 J AA 155

MOUNT MAQUANA APPLE CO
4 L 013H A197 S-0013H-A-C0014 R C A 499 8915 000 B2 WATSONVILLE CALIFORNIA 033729 7530 05 6 A 6 5 J 01A 1 B J 2 2 K AA 21

CONTRACTOR TOTAL 12 1,069

A B C D E F G H I J K L M N O P Q R S T U V W X Y Z \$ (0 0 0 0)

REL INC
 3 R F402 1820 F-04601-8-C0104 N C A 499 5820 000 A7 RADIO + TELEVISION COMMUNICATION EQUI 01A 3 5 J 01A 4 B J 2 2 A IA 25

SOUTHERN FLUID CONTROLS CORP
 4 K 0700 0431 S-00700-7-C0202 R C A 499 4820 000 A3 VALVES, NONPOWERED FLOPIDA 024312 0380 10 147
 4 K 0700 0434 S-00700-8-C0056 R C A 499 4820 000 A3 VALVES, NONPOWERED FLOPIDA 016045 1220 10 60
 4 K 0700 0468 S-00700-8-C0071 R C A 499 4820 000 A3 VALVES, NONPOWERED FLOPIDA 6 A 6 5 J 01A 1 R K 2 2 K L8 251
 4 L 0700 1437 S-00700-8-C0079 R C A 499 4820 000 C9E VALVES, NONPOWERED FLOPIDA 6 A 6 5 J 01A 1 R K 2 2 L L8 2A
 4 L 0700 1189 S-00700-8-C0009 R C A 499 4820 000 A3 VALVES, NONPOWERED FLOPIDA 6 A 6 5 J 01A 1 B K 2 2 L L8 13
 4 C 0700 2581 S-00700-8-C1069 R C A 499 4820 000 C9E VALVES, NONPOWERED FLOPIDA 6 A 6 5 J 01A 1 R K 2 2 C C9 36

WES PART OF FLORIDA INC
 2 A 1460 1874 N-00383-7-C1189 R C A 499 4220 000 A9 MARINE LIFESAIVING AND DIVING EQUIPME 01A 6 5 J 01A 1 R J 2 2 K F8 76
 4 H 0700 2281 S-00700-7-C0107 R C A 499 4220 000 C9E MARINE LIFESAIVING AND DIVING EQUIPME 01A 6 5 J 01A 1 R J 2 2 R L8 112

CONTRACTOR TOTAL 188

AMERICAN SAFETY EQUIPMENT COOP
 2 F 1460 9856 N-00383-8-C0457 R C A 499 4220 000 A9 MARINE LIFESAIVING AND DIVING EQUIPME 01A 6 5 C 01A 1 R J 2 2 C D9 11
 2 E 1460 7458 N-00383-8-C0457 R C A 499 4220 000 A9 MARINE LIFESAIVING AND DIVING EQUIPME 01A 6 5 J 01A 1 R J 2 2 R R9 24

CONTRACTOR TOTAL 35
 STATE TOTAL 783

BOYRTON BEACH
 FORT LAUDERDALE
 LAKE WORTH
 MIAMI

CONTRACTOR TOTAL 535
 CONTRACTOR TOTAL 2
 CONTRACTOR TOTAL 11

A H CCCC DDHD EEEEEEEEEEE F G H I J I J K K K L L M M N N N N N N N N N O P Q R S T T T U U V W X Y Z Z (000)

ACTION RESOURCES INC HONOLULU CITY HAWAII 037134 0440 12
5 3 CARA 013 7-0CMM4-M-C0005 C C D 499 PG.99 000 02 SERVICE OTHER THAN P141 - 969K
STATE TOTAL 1 22

8 A 3 5 J 01A 5 H J 1 2 A

22

22

22

CONTRACTOR	CONTRACT NO.	DESCRIPTION	AMOUNT	DATE	STATUS	REMARKS
GIRFALIAN FABRICS INC	5-00100-8-C0284	CLOTHING, SPECIAL PURPOSE	590340	04950	6 A 3 5 J 01A	1 R J 2 2 K I A 496
MOHEN MAI FOOD PRODUCTS INC	5-00130-7-C1137	BAKERY AND CEREAL PRODUCTS	616583	4120	6 A 6 5 J 01A	1 R J 2 2 J K 7 196
WELMETCO LTD	5-00100-8-C0307	INDIVIDUAL EQUIPMENT	017166	5135	6 A 3 5 J 01A	1 B J 2 2 J C A 195
HOLIDAY SYRUPS INC	5-00130-8-C0454	SUGAR, CONFECTIONERY, AND NUTS	003578	5210	6 A 6 5 J 01A	1 R J 2 2 J A 8 25
LEVINE SAMOEL PLUMBING HTG SUP INC	5-00700-8-C0284	VALVES, NONPOWDERED	549780	5740	6 A 6 5 J 01A	1 B K 2 2 L L A 11
GARLOCK INC	5-00500-8-C0201	PACKING AND GASKET MATERIALS	373195	6400	6 A 6 5 C 01A	1 R J 2 2 C H A 13
VEIAN VALVE CONF	5-00700-8-C1524	VALVES, NONPOWDERED	915572	6710	6 A 3 5 C 01A	1 R K 2 2 C C 9 45
PAVA MARIO & SONS INC	5-00100-8-C0324	CLOTHING, SPECIAL PURPOSE	668100	7130	6 A 6 5 J 01A	1 B J 2 2 K I A 68
BRISTOL MYERS CO	5-00120-8-C0177	CPUGS, BIOLOGICALS, AND OFFICIAL REA	136785	8300	6 A 3 5 A 01A	1 R J 2 2 K C 8 15
DISPOSABLE PROFILES INC	5-00120-8-C0307	SURG CLOTHING + TEXTILE SPEC	026763	8680	6 A 3 5 R 01A	1 R J 2 2 A C 8 53
DISPOSABLE PROFILES INC	5-00120-8-C0365	SURG CLOTHING + TEXTILE SPEC	026763	8680	6 A 3 5 R 01A	1 R J 2 2 A C 8 62
DISPOSABLE PROFILES INC	5-00120-8-C0465	SURG CLOTHING + TEXTILE SPEC	026763	8680	6 A 3 5 R 01A	1 B J 2 2 A F A 34
DISPOSABLE PROFILES INC	5-00120-8-C0466	SURG CLOTHING + TEXTILE SPEC	026763	8680	6 A 3 5 R 01A	1 B J 2 2 C H 8 39
DISPOSABLE PROFILES INC	5-00120-8-C0465	SURG CLOTHING + TEXTILE SPEC	271470	8680	6 A 6 5 R 01A	1 B J 2 2 C F A 34

CONTRACTOR TOTAL 5 1,709

----- PAGE 11 -----

----- PAGE 11 -----

A B CCCC 0000 EEEEEEEEFEEF F G H I JJJ KKK LLL MMM NNNNNNNNNNNNNNNNNNNNNNNNNNNNNNN D P Q R S YTTT U V W X Y Z77 \$ (000)

ALLEY CASSETTY COAL CO REAYER DAM KENTUCKY 03311A 0240 1A 6 A 3 5 J 01A 1 R K 1 2 J K8 120
4 J 0600 1005 S-00600-7-01697 R C A 499 9110 000 AAB FUELS, SOLIN 6 A 3 5 J 01A 1 R K 1 2 J L8 40
4 J 0600 1117 S-00600-7-01706 R C A 499 9110 000 AAB FUELS, SOLIN 150

CONTRACTOR TOTAL 2

P R S INC REPEA KENTUCKY 02431E 0300 1A 6 A 3 5 J 01A 1 R K 1 2 G C9 20

CONCOAL CORP COALDALE KENTUCKY 024196 0415 1A 6 A 3 5 J 01A 1 R K 1 2 J K7 74

MARTIN MARIETTA ALUMINUM INC LEWISPORT KENTUCKY 439740 2160 1A 4 3 9 7 4 0 2 1 6 0 1 A 1 R K 2 2 L E8 194

4 L 0500 0155 S-00500-7-00022 R C A 499 9535 000 C9E PLATE, SHEET, STRIP, + FOIL, MONFESR 6 A 4 5 C 01A 1 R K 2 2 L E8

HEBLE COAL CORP LIVINGSTON KENTUCKY 024225 2210 1A 6 A 6 5 J 01A 1 D K 1 2 J D8 306

4 J 0600 0123 S-00600-7-01668 R C A 499 9110 000 AAB FUELS, SOLIN

P R S INC MANCHESTER KENTUCKY 024311 2350 1A 6 A 3 5 J 01A 1 R K 1 2 J G8 366

4 J 0600 0336 S-00600-7-01680 R C A 499 9110 000 AAB FUELS, SOLIN 6 A 3 5 J 01A 1 R K 1 2 J L8 171

4 J 0600 0995 S-00600-7-01701 R C A 499 9110 000 AAB FUELS, SOLIN 6 A 3 5 J 01A 1 R K 1 2 J C9 2,173

4 C 0600 1964 S-00600-A-01660 F C H 499 9110 000 AAB FUELS, SOLIN 6 A 9 5 J 01A 1 R K 1 2 D C9 2,173-

4 D 0600 1964 S-00600-A-01660 2 F C H 499 9110 000 AAB FUELS, SOLIN 2

CONTRACTOR TOTAL 487

STATE TOTAL 8 1,231

A R CCCC 0000 EEEEEEEEEEE F G H I JJJ KKKK LLL MMM NNNNNNNNNNNNNNNNNNNNNNNNN O P Q R S TTTT U V W X Y Z Z \$4000

SHIVE MATTEW & ASSOCIATES DAVENPORT IOWA 042R00 2100 16
S I CR25 0024 4-00M25-A-00002 B C C 499 2699 000 S1 SERVICE OTHER THAN RR&I - 2698 R A 4 5 J 01A 5 R J 1 2 A 11

STATE TOTAL 1 11

A B C D E F G H I J K L M N O P Q R S T U V W X Y Z \$ (000)

MORGAN PACKING CO	AUSTIN	INDIANA	627660	0250	15
4 L 013H A210 S-0013H-A-C0037	R C A 499 8950 000 02	COMMITMENTS AND RELATED PRODUCTS	6 A 6 5 C 01A	1 R J 2 2 K CA	5A
4 C 013H A515 S-0013H-A-C0045	R C A 499 8915 000 02	FRUITS AND VEGETABLES	6 A 6 5 B 01A	1 R J 2 2 C FA	52
CONTRACTOR TOTAL	2	110			
STATE TOTAL	2	110			

CONTRACTOR	STATE	CONTRACT NO.	DATE	AMOUNT	DESCRIPTION	DATE	AMOUNT	PAGE	8
ABELLEVILLE SHOES MFG. CO	ILLINOIS	0100 0782 S-90100-A-C0632	6 A 6 5 J 01A	0640	FOOTWEAR, MENS	1 0 J 2 2 C 1A	239		
		0100 0136 S-90100-A-C0600	6 A 6 5 J 01A	0640	FOOTWEAR, MENS	1 0 J 2 2 J 1A	350		
		CONTRACTOR TOTAL		107820					
MAYHEM OSCAR & CO INC	ILLINOIS	0130 0152 S-00130-7-CZ102	6 A 6 5 B 01A	1710	MEAT, POULTRY, AND FISH	1 0 J 2 2 J 08	1,381		
		0100 0271 S-00100-A-C0325	6 A 6 5 J 01A	3870	BOXES, CARTONS, AND CRATES	1 0 J 2 2 K 10	432		
		CONTRACTOR TOTAL		585840					
WELLS COAL CO	ILLINOIS	0100 0020 S-90600-6-00170	6 A 6 5 C 01A	6115	FUELS, SOLID	1 0 K 1 2 J K7	99		
		TOTAL		2,503					

0 1 2 3 4 5 6 7 8 9 A B C D E F G H I J K L M N O P Q R S T U V W X Y Z (000)

STATS INC CORP K A 0100 0138 F-4160A-7-C11539 K B 0100 0373 F-4160A-8-C05543	NCAP PRCHTS + AERIAL PICK UP, DLVRY + CGO PRCHTS + AERIAL PICK UP, DLVRY + CGO	ASHFVILLE A C A 499 1670 000 A9 E C A 499 1670 000 A9	6106A0 U1R0 34 8 A 3 5 J 01A 8 A 3 5 J 01A	1 D J 2 2 K E8 1 R J 2 2 R H8	169 252
CONTRACTOR TOTAL 2					

KINGS POINT MFG CO K J 0100 0043 S-00100-5-C1124 K N 0100 0083 S-00100-5-C1124 1 K O 0100 0083 S-00100-5-C1124 2 K P 0100 0405 S-00100-8-C0306 K Q 0100 0405 S-00100-8-C0306 2 K R 0100 0405 S-00100-8-C0306 1 K S 0100 0405 S-00100-8-C0306 2 K T 0700 0604 S-00700-8-C0338	NCAP INDIVIDUAL EQUIPMENT INDIVIDUAL EQUIPMENT INDIVIDUAL EQUIPMENT OUTERWEAR, MENS OUTERWEAR, MENS OUTERWEAR, MENS OUTERWEAR, MENS PARAFIN LIFESAIVING AND DIVING EQUIPME	FAYETTEVILLE A C A 499 8465 000 A9 H C A 499 8465 000 A9 A C A 499 8465 000 A9 B C A 499 8405 000 A9 B C A 499 8405 000 A9 B C A 499 8405 000 A9 B C A 499 8405 000 A9 B C A 499 4220 000 A3	530150 1850 34 6 A 7 5 J 01A 6 A 7 5 J 01A 6 A 7 5 J 01A 6 A 3 5 J 01A 6 A 3 5 J 01A 6 A 3 5 J 01A 6 A 3 5 J 01A 6 A 3 5 J 01A	1 H J 2 2 J F6 1 H J 2 2 J F6 1 R J 2 2 J F6 1 R J 2 2 B A9 1 R J 2 2 B A9 1 R J 2 2 B A9 1 R J 2 2 B A9 1 R J 2 2 B A9 1 R J 2 2 K E8	15 15 15- 2,873- 2,873- 2,873- 2,873- 12
CONTRACTOR TOTAL 27					

MANNIF HOUSTERY MILLS INC K J 0100 0007 S-00100-8-C0205	NCAP HOSIERY, HANDWEAR, AND CLOTHING ACCE	KINGS MOUNTAIN R C A 499 8440 000 A9	584520 2780 34 6 A 3 5 J 01A	1 R J 2 2 J F8 1 R J 2 2 J F8	387
--	--	---	---------------------------------	----------------------------------	-----

MCDAE INDUSTRIES INC K K 0100 0134 S-00100-7-C1663 K L 0100 0791 S-00100-8-C0631	NCAP FOOTWEAR, MENS FOOTWEAR, MENS	MOUNT GILEAD R C A 499 8430 000 A9 R C A 499 8430 000 A9	593008 3590 34 6 A 6 5 J 01A 6 A 6 5 J 01A	1 R J 2 2 J F8 1 R J 2 2 C I8	841 1,466
CONTRACTOR TOTAL 2,307					

SPENTAL CORP THE K K FF30 0129 F-4160A-7-C1509 J D FF30 0473 F-4160A-8-C0800	NCAP PRCHTS + AERIAL PICK UP, DLVRY + CGO PRCHTS + AERIAL PICK UP, DLVRY + CGO	ROXBORO E C A 499 1670 000 A9 F C A 499 1670 000 A9	832620 4550 34 8 A 3 5 J 01A 8 A 3 5 J 01A	1 R J 2 2 K I8 1 H J 2 2 D K8	185 54
CONTRACTOR TOTAL 239					

ELLIS A M HOSIERY CO K J 0100 0006 S-00100-7-C1591	NCAP HOSIERY, HANDWEAR, AND CLOTHING ACCE	STATESVILLE R C A 499 8440 000 A9	308450 5000 34 6 A 6 5 J 01A	1 R J 2 2 J F8 1 R J 2 2 J F8	80
STATE TOTAL 3,641					

A R 00000000 FFFFFFFFFFFF E G M I JJJ KKKK LLL MMM NNNNNNNNNNNNNNNNNNNNNNNNNN D P Q R S TTTT U V W X Y Z Z \$ (000)

GLENN BERRY MFG INC
4 K 0100 0005 5-00100-R-00249 R C A 499 R415 000 A9 CLOTHING, SPECIAL PURPOSE OKLAHOMA 395220 1090 37
STATE TOTAL 1 1.146 1 8 J 2 2 K A9 1.146

A R CCCC DDDD EEEEEEEEEEEEEE F G H I JJJ KKKK LLL MMM NNNNNNNNNNNNNNNNNNNNNNNNN O P Q R S TTTT U V W X * Y ZZ \$(000)

COLUMBIA KNIT INC
4 C 0100 0696 S-00100-R-C0649
STATE TOTAL 1

PORTLAND
B C A 499 M405 000 A9 CUTERHEAR, MENS
704

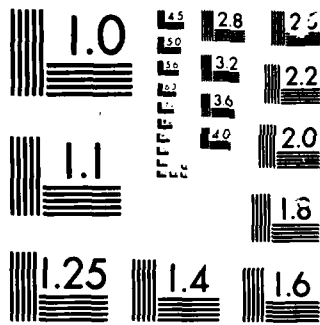
034261 2310 30

6 A 6 5 J 01A 1 B J 2 2 C I R

704

A B C D E F G H I J K L M N O P Q R S T U V W X Y Z Z \$0000

TEXAS CITRUS EXCHANGE MAPLINGEN TEXAS 867140 3500 44 6 A 6 5 J 01A 1 H J 2 2 K RA 10
4 L 013H R211 S-0013H-A-C0043 R C A 499 8915 000 02 FRUITS AND VEGETABLES
STATE TOTAL 1



MICROCOPY

CHART

SECTION 4

COMBINED SMALL BUSINESS/LABOR SURPLUS AREA SET-ASIDES

R E P O R T F O R M A T

L I N E 1.

ITEM 6 CONTRACTOR NAME
 ITEM 7 CITY NAME
 ITEM 7 STATE OR COUNTRY NAME
 ITEM 6 CONTRACTOR CODE
 ITEM 7 CITY CODE
 ITEM 7 STATE OR COUNTRY CODE

L I N E 2.

A. SUBMITTING DEPARTMENT
 B. REPORT MONTH
 C. PURCHASING OFFICE
 D. ITEM 1A REPORT NUMBER
 E. ITEM 2 CONTRACT NUMBER
 F. DEPARTMENT
 G. ITEM 2B ACTIVITY
 H. ITEM 2C FISCAL YEAR
 I. ITEM 20 SERIAL NUMBER
 J. ITEM 3 CORRECTION OF PRIOR ISO
 K. ITEM 5A MINORITY BUSINESS FIRM
 L. ITEM 7C MULTI-YEAR PROCUREMENT
 M. ITEM 8 SUBJECT WALSH-HEALY / SERVICE CONTRACT ACT
 N. ITEM 9 LARG SUPPLUS APPA
 O. ITEM 10A ESC OR SERVICE CODE
 P. ITEM 10B SYSTEM OR EQUIPMENT CODE
 Q. ITEM 10C UDDP CODE
 R. ITEM 11 DESCRIPTION OF COMMODITY OR SERVICE
 S. ITEM 12 COMBINATED PROCUREMENT
 T. ITEM 13 SYNOPSIS OF PROPOSED PROCUREMENT
 U. ITEM 14 KIND OF PROCUREMENT ACTION
 V. ITEM 15 CONTRACT PLACEMENT
 W. ITEM 16 TYPE OF BUSINESS CONCERN
 X. ITEM 17 NEGOTIATION EXCEPTION
 Y. ITEM 18 EXTENT OF COMPETITION IN NEGOTIATION
 Z. ITEM 19 CERTIFIED COST OR PRICING DATA
 AA. ITEM 20 TYPE OF CONTRACT
 AB. ITEM 21 CONTRACT ADMINISTRATION
 AC. ITEM 21A COST ACCOUNTING STANDARDS
 AD. ITEM 22 AWARD MONTH
 AE. ITEM 23 EST. COMPLETION MONTH + YEAR
 AF. ITEM 24 DOLLARS IN THOUSANDS

A R 0000 0000 0000 0000 0000 0000 0000 0000 0 P Q R S T U V W X Y Z 77 \$(000)

STEINREPS D-MOS, INC CAROL 9010 PUERTO RCO A32320 0160 PP 177
4 K 0100 0154 5-00100-M-00213 R C A 652 8440 000 A9 HOSIFRY, HANDWEA, AND CLOTHING ACCE 6 A 6 5 J 01H 1 R J 2 2 K I R

CONSOLIDATED KNITTING MILLS CO INC CORPO/AL PUERTO RCO 220176 0320 PP 306
4 L 0100 0300 5-00100-S-00339 R C A 619 8415 000 A9 CLOTHING, SPECIAL PURPOSE 6 A 6 5 J 01B 1 R J 2 2 L A 9

STATE TOTAL 2 483

ACCOUNT	DESCRIPTION	AMOUNT	DATE	STATUS	OTHER
4 G 013H 4973 S-00134-A-C1040	DANRUSY CONN FOOD OILS AND FATS	040801 0250 07	6 A 6 5 J 01H	1 B J 2 2 G JM	40
4 L 0400 1231 S-00400-B-C0403	ESSEY CONN ELECTRIC PORTABLE AND HAND LIGHTING	273420 0450 07	6 A 6 4 J 01H	1 B J 2 2 L F8	13
4 I 0400 6254 S-00500-A-C1817	HARTCO CONN PLATE, SHEET, STOP, + FOIL, NONFERROUS	037765 0600 07	6 A 3 4 J 01H	1 B J 2 2 I C9	23
4 I 0400 6254 S-00500-B-C1817	CONTRACTOR TOTAL	6 A 3 4 J 01B	1 B J 2 2 I C9		23
4 D 0500 2021 S-00500-7-00152	MILFORD CONN MISCELLANEOUS HARDWARE	914200 0770 07	6 A 4 5 J 17A	1 B K 2 2 O 1A	95
4 G 0500 2014 S-00500-B-C1814	NORTH HAVEN CONN WIFE, NON-ELECTRICAL, IRON AND STEEL	132770 0960 07	6 A 6 5 J 17A	1 B K 2 2 G 1A	36
4 F 0500 2257 S-00500-A-C2364	NORTH HAVEN CONN CHAIN AND WIRE ROPE	908470 0960 07	6 A 3 5 J 01B	1 B K 2 2 E 1A	38
4 A 0500 0905 S-00500-A-C0143	POMFRET CONN CHAIN AND WIRE ROPE	010529 1087 07	6 A 3 4 J 47A	1 B K 2 2 A 1A	28
4 A 0500 0906 S-00500-A-C0143	CONTRACTOR TOTAL	6 A 6 5 J 17A	1 B J 2 2 A 0A		28
2 F 1430 1454 N-00123-A-C0525	ROCKY HILL CONN PONTONS AND FLOATING DOCKS	014542 1160 07	6 A 6 4 J 01B	1 B J 2 2 F 69	18
2 F 1430 1457 N-00123-A-C0526	CONTRACTOR TOTAL		6 A 6 4 J 01H	1 B J 2 2 F 69	71
2 F 1430 1458 N-00123-A-C0526	STATE TOTAL		6 A 6 4 J 01A	1 B J 2 2 F 69	71
	CONTRACTOR TOTAL	231	6 A 6 4 J 01B	1 B J 2 2 F 69	71
	STATE TOTAL	555			

A B C D E F G H I J K L M N O P Q R S T U V W X Y Z \$1000

FAST WIND INDUSTRIES INC	DOVER	DELAWARE	022919	0170	UA	6 A 7 5 J 0 1 R	1 R J 2 2 E FA	126-
6 F 0100 1128 S-00100-6-C1256	D C A 610 R415 000 A3	CLOTHING, SPECIAL PURPOSE				6 A 5 5 J 0 1 R	1 R J 2 2 J JA	1,368
4 J 0100 0000 S-10100-7-C1082	D C A 593 R465 000 A0	INDIVIDUAL EQUIPMENT						
	CONTRACTOR TOTAL		1,242					

HOCKESSIN FOOD PRODUCTS CORP	HOCKESSIN	DELAWARE	462880	0295	UA	6 A 6 5 J 0 1 R	1 R J 2 2 B FA	72
4 H 0100 8851 S-00134-A-01115	R C A 670 R415 000 B2	FRUITS AND VEGETABLES						
	STATE TOTAL		1,316					

A B C D E F G H I J K L M N O P Q R S T U V W X Y Z

NORTH AMERICAN TRAILING CO COCOA BEACH FLORIDA 035042 0730 10 519

MASS SIGNAL LIGHT CO INC NAPLES FLORIDA 018524 2460 10 33

552

2

TOTAL

STATE

A B C D E F G H I J K L M N O P Q R S T U V W X Y Z 1 2 3 4 5 6 7 8 9 0

FOY LOCK COSP
4 1 0000 2717 1-0000-8-00023 R C A 699 5300 000 09F MISCELLANEOUS HARDWARE 14 6 A 4 5 J 17A 1 B K 2 2 F JA 96

4 0 0000 2000 5-0000-8-00023 R C A 699 5300 000 09F MISCELLANEOUS HARDWARE 192 6 A 6 5 J 17A 1 B K 2 2 D HA 96

CURTIS TOR TOTAL 2 192

STATE TOTAL 2 192

SILO GROVE ILLINOIS 036699 7510 14

STATE OF NEW YORK
 DEPARTMENT OF TAXATION AND FINANCE
 TAX RETURN FOR THE YEAR 1967

NAME: [REDACTED] ADDRESS: [REDACTED] CITY: [REDACTED] STATE: NY ZIP: [REDACTED]

EMPLOYER: [REDACTED] EMPLOYEE ID: [REDACTED] SOCIAL SECURITY: [REDACTED]

DATE OF BIRTH: [REDACTED] DATE OF DEATH: [REDACTED]

STATUS: [REDACTED] DEPENDENTS: [REDACTED]

AGREEMENT: [REDACTED] SIGNATURE: [REDACTED]

DATE: [REDACTED] TAXPAYER'S ID: [REDACTED]

PREPARED BY: [REDACTED] FEE: [REDACTED]

RECEIVED: [REDACTED] OFFICE: [REDACTED]

DATE: [REDACTED] AGENT: [REDACTED]

ADDRESS: [REDACTED] CITY: [REDACTED]

STATE: NY ZIP: [REDACTED]

PHONE: [REDACTED]

FAX: [REDACTED]

EMAIL: [REDACTED]

WEBSITE: [REDACTED]

OTHER: [REDACTED]

NOTES: [REDACTED]

DISCLAIMER: [REDACTED]

TERMS AND CONDITIONS: [REDACTED]

AGREEMENT: [REDACTED]

SIGNATURE: [REDACTED]

DATE: [REDACTED]

AGENT: [REDACTED]

10-10-68

10-10-68

10-10-68

10-10-68

10-10-68

10-10-68

10-10-68

10-10-68

10-10-68

10-10-68

10-10-68

10-10-68

10-10-68

10-10-68

10-10-68

10-10-68

10-10-68

10-10-68

10-10-68

10-10-68

10-10-68

10-10-68

10-10-68

10-10-68

10-10-68

10-10-68

10-10-68

10-10-68

10-10-68

10-10-68

10-10-68

10-10-68

10-10-68

10-10-68

10-10-68

10-10-68

10-10-68

10-10-68

10-10-68

10-10-68

10-10-68

10-10-68

10-10-68

10-10-68

10-10-68

ALBANY ELECTRIC SUPPLY CO INC NEW YORK 0950 33 07450 0950 33 1 R K 2 2 C A 9 170

BALTIMORE METAL SUPPLY CO NEW YORK 0950 33 01444 0950 33 1 R K 2 2 C A 9 170

BUFFALO ELECTRIC SUPPLY CO NEW YORK 0950 33 01444 0950 33 1 R K 2 2 C A 9 170

BUFFALO ELECTRIC SUPPLY CO NEW YORK 0950 33 01444 0950 33 1 R K 2 2 C A 9 170

BUFFALO ELECTRIC SUPPLY CO NEW YORK 0950 33 01444 0950 33 1 R K 2 2 C A 9 170

BUFFALO ELECTRIC SUPPLY CO NEW YORK 0950 33 01444 0950 33 1 R K 2 2 C A 9 170

BUFFALO ELECTRIC SUPPLY CO NEW YORK 0950 33 01444 0950 33 1 R K 2 2 C A 9 170

BUFFALO ELECTRIC SUPPLY CO NEW YORK 0950 33 01444 0950 33 1 R K 2 2 C A 9 170

BUFFALO ELECTRIC SUPPLY CO NEW YORK 0950 33 01444 0950 33 1 R K 2 2 C A 9 170

BUFFALO ELECTRIC SUPPLY CO NEW YORK 0950 33 01444 0950 33 1 R K 2 2 C A 9 170

BUFFALO ELECTRIC SUPPLY CO NEW YORK 0950 33 01444 0950 33 1 R K 2 2 C A 9 170

----- PAGE 22 -----

NEW MEXICO 026749 0670 42
SPECIAL PICK UP, DELVY + 500 H A 9 4 J 01R 1 R J 2 2 L L 7 90-

LAS VEGAS
B C A 6.30 16.70 ASD 09
STATE TOTAL 1

NAVAJO TEXTILES OF NEW MEXICO INC
3 L FEED 0268 P-910A-6-016.57

A B C D E F G H I J K L M N O P Q R S T U V W X Y Z 1 2 3 4 5 6 7 8 9 0

DEPOSIT & SON CO
% 0 0100 0150 5-00100-N-00+15
VIRELAND NJ 07095 8405 000 A9
NEW JERSEY 07095 8405 000 A9
CITY TOTAL 1,644
STATE TOTAL 17
TOTAL 1,661

6 A 6 5 J 018 1 H J 2 2 H KH 1,596

ACCOUNT NUMBER	DESCRIPTION	DATE	AMOUNT	CHECK NUMBER	DEBIT	CREDIT	BALANCE
4 R 0000 0000	NEW JERSEY	04/27/80	04650	31			
4 L 0500 07A1	FIRER ROPE, CONDAG, AND TWINE	06/05/80	04820	000	09F		
4 R 0200 1244	PACKING AND GASKET MATERIALS	06/05/80	04800	31			
4 F 0500 2514	LOCKS, TACKLE, RIGGING, AND SLINGS	06/05/80	06000	31			
4 J 0500 6374	LOCKS, TACKLE, RIGGING, AND SLINGS	06/05/80	06000	31			
	CONTRACTOR TOTAL			2			151
4 I 0100 1531	SLEEP PRODUCTS INC	06/05/80	04205	000	09		
4 J 0130 0037	PACKAGING AND PACKING HULK MATERIALS	06/05/80	04800	000	02		
	TOTAL			2			2,414
4 R 0500 1327	PACKING AND GASKET MATERIALS	06/04/80	2070	31			
4 J 0500 6374	PACKING AND GASKET MATERIALS	06/05/80	04800	31			
	CONTRACTOR TOTAL			2			24
4 F 0700 4517	VALVES, NONPOWERED	06/03/80	03379	2320	31		
4 R 0500 1605	MISCELLANEOUS HARDWARE	06/04/80	59840	3110	31		
4 F 0801 2224	POWER CONVERSION EQUIPMENT, ELECTRIC	07/21/80	3435	31			
4 R 0100 0400	CABINETS, LOCKERS, BINS, AND SHELVES	08/23/80	4610	31			
4 R 0100 1394	MISC MELTING, SOLDERING, + HEATING	06/06/80	6610	31			
	CITY TOTAL			2			165
4 R 0100 1433	CLOTHING, SPECIAL PURPOSE	06/07/80	4710	31			
	CITY TOTAL			2			44

UNIT	DESCRIPTION	QUANTITY	UNIT PRICE	TOTAL
4 1 0130	GRAND HAVEN	2360	23	27
4 1 0130	SELF-CONTAINED REFRIGERATION UNITS	155700	23	226
4 1 0130	STEEPLING HEIGHTS	409350	23	192
4 1 0130	FRAGS AND SACKS			
4 1 0130	FRUITS AND VEGETABLES			
	TOTAL			

 A B C D E F G H I J K L M N O P Q R S T U V W X Y Z
 \$1000

A B C D E F G H I J K L M N O P Q R S T U V W X Y Z

DOWN EAST ASSOCIATES
2 I 1959 7259 A-00104-A-0290A R C A 699 4820 000 A3 VALVES, NONPOWFFED

YALF CORDAGE INC
4 I 0500 6227 S-00500-A-0250A D C A 640 4020 000 C9F FINER ROPE, CORDAGE, AND TWINE

STATE TOTAL 2

2780A5 0700 20 K A 3 4 J 01A 1 R J 2 2 I F 9 11

042027 2020 20 6 8 6 5 J 01B 1 R K 2 2 T A 9 14

MAINE
YARMOUTH

MAINE
25

CONTRACTOR	CONTRACT NO	DESCRIPTION	AMOUNT	DATE	STATUS	OTHER
HILLS MFG CO	6-10630	ASHEVILLE	0180	1850	34	129
WELLS MFG CO	6-10630	ASHEVILLE	0180	1850	34	129
MANESS W C MFG CO	571560	RAYSON CITY	0630	34		97
MANESS W C MFG CO	571560	RAYSON CITY	0630	34		170
CONTRACTOR TOTAL						
KINGS POINT MFG CO	530150	FAYETTEVILLE	1850	34		56
WELLS MFG CO	530150	FAYETTEVILLE	1850	34		56
SUPREME MFG CO INC	448430	GASTONIA	2040	34		1184
WELLS MFG CO	448430	GASTONIA	2040	34		1184
BRANFORD WIFE & MFG CO	132770	MOUNTAIN HOME	3620	34		38
WELLS MFG CO	132770	MOUNTAIN HOME	3620	34		38
CONTRACTOR TOTAL						
STATE						11708

A B C D E F G H I J K L M N O P Q R S T U V W X Y Z \$1000

A B C D E F G H I J K L M N O P Q R S T U V W X Y Z 0 1 2 3 4 5 6 7 8 9 * # \$ % & ' () * + , - . / : ; < = > ? @ [\] ^ _ ` { | } ~

OKLAHOMA AEROSPACE INC. HARTSHORNE OKLAHOMA 655265 2150 37
I F AM01 1957 A-BA001-A-00704 A C A 633 1430 CMC A2 GUIDED MISSILE REMOTE CONTROL SYSTEM 8 A X 6 J 018 1 R J 2 2 F 44
STATF TOTAL 1 44

A B C D E F G H I J K L M N O P Q R S T U V W X Y Z \$10001

PLATT S SONS R C A 505 4010 000 C9F CHAIN AND WIRE ROPE PA 687268 0290 19 6 A 4 5 J 01B 1 B K 2 2 F A9 58

COLUMBIA R C A 641 9650 000 C9E NONFERROUS BASE METAL REFINERY + INT 20R260 0955 39 6 A 3 4 J 17A 1 A K 2 2 J L7 36
R C A 694 9650 000 C9F NONFERROUS BASE METAL REFINERY + INT 6 A 6 5 J 17A 1 B K 2 2 J L7 36
R C A 694 9650 000 C9E NONFERROUS BASE METAL REFINERY + INT 6 A 6 4 J 01B 1 B K 2 2 B 04 18
R C A 641 9650 000 C9E NONFERROUS BASE METAL REFINERY + INT 6 A 3 4 J 01A 1 B K 2 2 F M8 19
CONTRACTOR TOTAL 6

TECHALLOY CO INC R C A 660 9505 000 C9F WIRE, NONELECTRICAL, IRON AND STEEL PA 85R900 4105 39 6 A 3 4 J 17A 1 B K 2 2 K 08 38

SCRANTON R C A 556 5975 000 C9E ELECTRICAL HARDWARE AND SUPPLIES PA 421A63 4520 39 6 A 4 4 J 01D 1 B J 2 2 L 08 23
R C A 656 5975 000 C9F ELECTRICAL HARDWARE AND SUPPLIES 6 A 6 4 J 01A 1 B J 2 2 A FA 53
R C A 656 5975 000 C9E ELECTRICAL HARDWARE AND SUPPLIES 6 A 6 4 J 01B 1 B J 2 2 R FA 16
R C A 656 5975 000 C9E ELECTRICAL HARDWARE AND SUPPLIES 6 A 3 4 J 01H 1 B J 2 2 0 GA 91
R C A 656 4030 000 C9F FITTINGS FOR ROPE, CABLE, AND CHAIN 6 A 4 4 J 17A 1 B K 2 2 J CA 17
R C A 656 4030 000 C9F FITTINGS FOR ROPE, CABLE, AND CHAIN 6 A 4 5 J 01B 1 B K 2 2 C GA 35
CONTRACTOR TOTAL 6

GENTEX CORP R C A 656 8415 000 A9 CLOTHING, SPECIAL PURPOSE PA 386160 4663 39 6 A 6 5 J 01D 1 B J 2 2 E F9 295

SUMMARY R C A 680 4010 000 C9E CHAIN AND WIRE ROPE PA 671K80 5000 39 6 A 6 5 J 01A 1 B K 2 2 F JA 27
R C A 680 4010 000 C9E CHAIN AND WIRE ROPE 6 A 6 4 J 17A 1 B K 2 2 F LA 19
R C A 680 4010 000 C9E CHAIN AND WIRE ROPE 6 A 4 5 J 01A 1 B K 2 2 C JA 14
R C A 680 4010 000 C9E CHAIN AND WIRE ROPE 6 A 4 5 J 17A 1 B K 2 2 I A9 26
CONTRACTOR TOTAL 4

SMITH D F INC R C D 688 Y979 000 C2 MISCELLANEOUS UTILITIES FACILITIES PA 011764 5115 39 A A 7 4 J 01R 1 B J 1 2 I 550-

STATE TOTAL 1A 471

A B C D E F G H I J K L M N O P Q R S T U V W X Y Z

ADFL LUMBER COOP LAURENCEVILLE VIRGINIA 004510 2450 47 365
4 0 0400 2691 S-00400-P-01526 B C A 624 5990 000 690 MISCELLANEOUS MATERIALS HANDLING EQU 6 A 6 4 J UID 1 B J 2 2 C JM 365
STATE TOTAL 1

A B C D E F G H I J K L M N O P Q R S T U V W X Y Z
 0 1 2 3 4 5 6 7 8 9 A B C D E F G H I J K L M N O P Q R S T U V W X Y Z

549780 3430 50
 6 A 3 4 J 01R 1 R K 2 2 L JA 37
 6 A 5 4 J 01R 1 R K 2 2 A JA 37
 6 A 5 4 J 01R 1 R K 2 2 A 09 25
 6 A 5 4 J 01R 1 R K 2 2 O F9 59

611700 3430 50
 6 A 5 4 J 01R 1 R K 2 2 L JA 106
 6 A 3 4 J 01R 1 R K 2 2 L LA 86
 6 A 5 4 J 01R 1 R K 2 2 L KA 86

611850 3430 50
 6 A 5 4 J 01R 1 R K 2 2 L TA 21
 6 A 5 4 J 01R 1 R K 2 2 J MA 33
 6 A 5 4 J 01R 1 R K 2 2 J LA 22
 6 A 5 4 J 01R 1 R K 2 2 L RA 11
 6 A 5 4 J 01R 1 R K 2 2 A CA 48
 6 A 5 5 J 01R 1 R K 2 2 O F9 57

WISCONSIN
 VALVES, NONPOWERED
 VALVES, NONPOWERED
 VALVES, NONPOWERED
 VALVES, NONPOWERED

MILWAUKEE
 VALVES, NONPOWERED
 VALVES, NONPOWERED
 VALVES, NONPOWERED

MILWAUKEE
 VALVES, NONPOWERED
 VALVES, NONPOWERED
 VALVES, NONPOWERED
 VALVES, NONPOWERED

CONTRACTOR TOTAL
 CITY TOTAL
 STATE TOTAL

CONTRACTOR TOTAL
 CITY TOTAL
 STATE TOTAL

CONTRACTOR TOTAL
 CITY TOTAL
 STATE TOTAL

CONTRACTOR TOTAL
 CITY TOTAL
 STATE TOTAL

CONTRACTOR TOTAL
 CITY TOTAL
 STATE TOTAL

CONTRACTOR TOTAL
 CITY TOTAL
 STATE TOTAL

CONTRACTOR TOTAL
 CITY TOTAL
 STATE TOTAL

CONTRACTOR TOTAL
 CITY TOTAL
 STATE TOTAL

CONTRACTOR TOTAL
 CITY TOTAL
 STATE TOTAL

CONTRACTOR TOTAL
 CITY TOTAL
 STATE TOTAL

CONTRACTOR TOTAL
 CITY TOTAL
 STATE TOTAL

CONTRACTOR TOTAL
 CITY TOTAL
 STATE TOTAL

END

DTIC

6-86