

MICROCOPY RESOLUTION TEST CHART
NATIONAL BUREAU OF STANDARDS-1963-A

PHOTOGRAPH THIS SHEET

II

LEVEL

1

INVENTORY

AD-A154 343

DTIC ACCESSION NUMBER

MA-00622

DOCUMENT IDENTIFICATION

Oct 1978

DISTRIBUTION STATEMENT A

Approved for public release;
Distribution Unlimited

DISTRIBUTION STATEMENT

ACCESSION FOR

NTIS GRA&I

DTIC TAB

UNANNOUNCED

JUSTIFICATION

BY

DISTRIBUTION /

AVAILABILITY CODES

DIST

AVAIL AND/OR SPECIAL

A-1



DISTRIBUTION STAMP

DTIC
ELECT
JUN 3 1985
S D

DATE ACCESSIONED

DATE RETURNED

85 6 3 033

DATE RECEIVED IN DTIC

REGISTERED OR CERTIFIED NO.

PHOTOGRAPH THIS SHEET AND RETURN TO DTIC-DDAC

AD-A154 343

**NASHUA RIVER BASIN
HOLDEN, MASSACHUSETTS**

**KENDALL RESERVOIR DAM
MA 00622**

**PHASE I INSPECTION REPORT
NATIONAL DAM INSPECTION PROGRAM**



**DEPARTMENT OF THE ARMY
NEW ENGLAND DIVISION, CORPS OF ENGINEERS
WALTHAM, MASS. 02154**

OCTOBER 1978

KENDALL RESERVOIR DAM

MA 00622

NASHUA RIVER BASIN
HOLDEN, MASSACHUSETTS

PHASE I - INSPECTION REPORT
NATIONAL DAM INSPECTION
PROGRAM

UNCLASSIFIED

SECURITY CLASSIFICATION OF THIS PAGE (When Data Entered)

REPORT DOCUMENTATION PAGE		READ INSTRUCTIONS BEFORE COMPLETING FORM
1. REPORT NUMBER MA 00622	2. GOVT ACCESSION NO.	3. RECIPIENT'S CATALOG NUMBER
4. TITLE (and Subtitle) Kendall Reservoir Dam NATIONAL PROGRAM FOR INSPECTION OF NON-FEDERAL DAMS		5. TYPE OF REPORT & PERIOD COVERED INSPECTION REPORT
7. AUTHOR(s) U.S. ARMY CORPS OF ENGINEERS NEW ENGLAND DIVISION		6. PERFORMING ORG. REPORT NUMBER
9. PERFORMING ORGANIZATION NAME AND ADDRESS		8. CONTRACT OR GRANT NUMBER(s)
11. CONTROLLING OFFICE NAME AND ADDRESS DEPT. OF THE ARMY, CORPS OF ENGINEERS NEW ENGLAND DIVISION, NEDED 424 TRAPELO ROAD, WALTHAM, MA. 02254		10. PROGRAM ELEMENT, PROJECT, TASK AREA & WORK UNIT NUMBERS
14. MONITORING AGENCY NAME & ADDRESS (if different from Controlling Office)		12. REPORT DATE October 1978
		13. NUMBER OF PAGES 65
		15. SECURITY CLASS. (of this report) UNCLASSIFIED
		15a. DECLASSIFICATION/DOWNGRADING SCHEDULE
16. DISTRIBUTION STATEMENT (of this Report) APPROVAL FOR PUBLIC RELEASE: DISTRIBUTION UNLIMITED		
17. DISTRIBUTION STATEMENT (of the abstract entered in Block 20, if different from Report)		
18. SUPPLEMENTARY NOTES Cover program reads: Phase I Inspection Report, National Dam Inspection Program; however, the official title of the program is: National Program for Inspection of Non-Federal Dams; use cover date for date of report.		
19. KEY WORDS (Continue on reverse side if necessary and identify by block number) DAMS, INSPECTION, DAM SAFETY, Nashua River Basin Holden, Massachusetts Kendall Brook, Tributary of Asnebumskit Brook		
20. ABSTRACT (Continue on reverse side if necessary and identify by block number) The dam is an earthfill dam located at the northern end of Kendall Reservoir. The dam is about 1120 ft. long and 39 ft. high. The major problems are the deteriorating concrete on the spillway. Generally the dam is considered to be in good condition. It has been classified as high in the hazard category. It is recommended that the City of Worcester employ a qualified engineer to investigate the seepage at the toe of the dam.		

NATIONAL DAM INSPECTION
PROGRAM

PHASE I INSPECTION REPORT

BRIEF ASSESSMENT

Identification No.: MA00622

Name of Dam: Kendall Reservoir

Town: Holden

County and State: Worcester County, Massachusetts

Stream: Kendall Brook - Tributary of Asnebumskit
Brook

Date of Inspection: September 13, 1978

Kendall Reservoir Dam is an earthfill dam located at the northern end of Kendall Reservoir. An earthfill dike is located at the southern end of the reservoir. The dam and dike were both constructed around 1911 for a water supply reservoir by the City of Worcester. The dam is about 1,120 feet long and a maximum of 39 feet high. The dike is about 210 feet long and 7 feet high. The spillway is a rectangular concrete channel through the dam. The weir which is 35 feet long, has flashboards 18 inches high. There is an outlet conduit beneath the embankment that terminates in a concrete headwall at the downstream toe. Discharge from this conduit flows north to Eagle Lake. There is also a gate house located on the dike. The outlet conduit from the gate house is regulated by the City of Worcester to provide water to the distribution reservoirs. Flow is controlled by slide gates at two inlets under the gate house. The discharge conduit is a 30-inch cast-iron pipe which extends 1,000 feet south, and discharges at a concrete distribution basin.

Additional structures were designed to allow water to flow from Quinapoxet Reservoir and Pine Hill Reservoir, north and west of Kendall Reservoir. The purpose was to maintain a high water level in Kendall and the lower reservoirs (Holden No. 1 and No. 2).

KENDALL RESERVOIR DAM

The dam and dike were neither designed nor constructed according to current approved procedures. Based on the visual inspection, the limited engineering data, and inadequate maintenance of the appurtenances, certain conditions at the dam must be corrected to assure the continued performance of the structures. Generally, the dam and dike are considered to be in good condition. Because of the potential danger to lives and property downstream of Eagle Lake, the dam has been placed in the "high" hazard category according to Corps of Engineers guidelines for hazard potential.

The major problems are the deteriorating concrete on the spillway, particularly on the side walls; the slight seepage in the vicinity of the outlet at the toe of the dam; and the accumulation of soil and debris burying the outlet at the headwall.

Hydraulic analyses indicate that the spillway (without flashboards) can discharge a flow of 2,022 cubic feet per second (cfs) at elevation (El) 820.0, which is approximately the top of the dam.

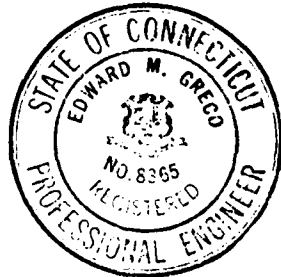
An outflow test flood of 1,700 cfs (the probable maximum flood) would raise the reservoir level to a maximum El 819.2, and would not overtop the dam.

It is recommended that the City of Worcester employ a qualified consultant to investigate the seepage at the toe of the dam. It is also recommended that the Owner repair the concrete on the spillway, clear the debris from the outlet, and fill in the animal burrows on the slopes. The Owner should continue the program of maintenance inspections.

Repair of the spillway and outlet at the dam should be undertaken by the Owner within a year of receipt of this Phase I Inspection Report. The

KENDALL RESERVOIR DAM

remaining work should be implemented within two years.
An alternative to these recommendations would be to
lower the water level in the reservoir.



A handwritten signature in cursive script, appearing to read "Edward M. Greco".

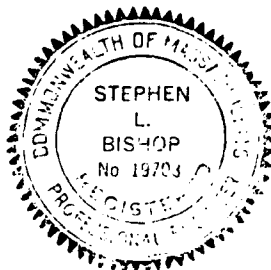
Edward M. Greco, P.E.
Project Manager
Metcalf & Eddy, Inc.

Connecticut Registration
No. 08365

Approved by:

A handwritten signature in cursive script, appearing to read "Stephen L. Bishop".

Stephen L. Bishop, P.E.
Vice President
Metcalf & Eddy, Inc.



Massachusetts Registration
No. 19703

KENDALL RESERVOIR DAM

This Phase I Inspection Report on Kendall Reservoir Dam has been reviewed by the undersigned Review Board members. In our opinion, the reported findings, conclusions, and recommendations are consistent with the Recommended Guidelines for Safety Inspection of Dams, and with good engineering judgment and practice, and is hereby submitted for approval.

Richard F. Doherty

RICHARD F. DOHERTY, MEMBER
Water Control Branch
Engineering Division

Carney M. Terzian

CARNEY M. TERZIAN, MEMBER
Design Branch
Engineering Division

Joseph A. McElroy

JOSEPH A. MCELROY, CHAIRMAN
Chief, NED Materials Testing Lab.
Foundations & Materials Branch
Engineering Division

APPROVAL RECOMMENDED:

Joe B. Fryar

JOE B. FRYAR
Chief, Engineering Division

PREFACE

This report is prepared under guidance contained in Recommended Guidelines for Safety Inspection of Dams, for a Phase I Investigation. Copies of these guidelines may be obtained from the Office of Chief of Engineers, Washington, D. C. 20314. The purpose of a Phase I Investigation is to identify expeditiously those dams which may pose hazards to human life or property. The assessment of the general condition of the dam is based upon available data and visual inspections. Detailed investigation, and analyses involving topographic mapping, subsurface investigations, testing, and detailed computational evaluations are beyond the scope of a Phase I Investigation; however, the investigation is intended to identify any need for such studies.

In reviewing this report, it should be realized that the reported condition of the dam is based on observations of field conditions at the time of inspection along with data available to the inspection team. In cases where the reservoir was lowered or drained prior to inspection, such action, while improving the stability and safety of the dam, removes the normal load on the structure and may obscure certain conditions which might otherwise be detectable if inspected under the normal operating environment of the structure.

It is important to note that the condition of a dam depends on numerous and constantly changing internal and external conditions, and is evolutionary in nature. It would be incorrect to assume that the present condition of the dam will continue to represent the condition of the dam at some point in the future. Only through continued care and inspection can there be any chance that unsafe conditions be detected.

Phase I inspections are not intended to provide detailed hydrology and hydraulic analyses. In accordance with the established Guidelines, the Spillway Test flood is based on the estimated "Probable Maximum Flood" for the region (greatest reasonably possible storm runoff), or fractions thereof. Because of the magnitude and rarity of such a storm event, a finding that a spillway will not pass the test flood should not be interpreted as necessarily posing a highly inadequate condition. The test flood provides a measure of relative spillway capacity and serves as an aid in determining the need for more detailed hydrologic and hydraulic studies, considering the size of the dam, its general conditions and the downstream damage potential.

KENDALL RESERVOIR DAM

TABLE OF CONTENTS

	<u>Page</u>
BRIEF ASSESSMENT	
PREFACE	
OVERVIEW PHOTO	
LOCATION MAP	
REPORT	
SECTION 1 - PROJECT INFORMATION	1
1.1 General	1
1.2 Description of Project	2
1.3 Pertinent Data	6
SECTION 2 - ENGINEERING DATA	10
2.1 General	10
2.2 Construction Records	10
2.3 Operating Records	10
2.4 Evaluation of Data	11
SECTION 3 - VISUAL INSPECTION	12
3.1 Findings	12
3.2 Evaluation	14
SECTION 4 - OPERATING PROCEDURES	15
4.1 Procedures	15
4.2 Maintenance of Dam	15
4.3 Maintenance of Operating Facilities	15
4.4 Description of Any Warning System in Effect	16
4.5 Evaluation	16
SECTION 5 - HYDRAULIC/HYDROLOGIC	17
5.1 Evaluation of Features	17

KENDALL RESERVOIR DAM

TABLE OF CONTENTS (Continued)

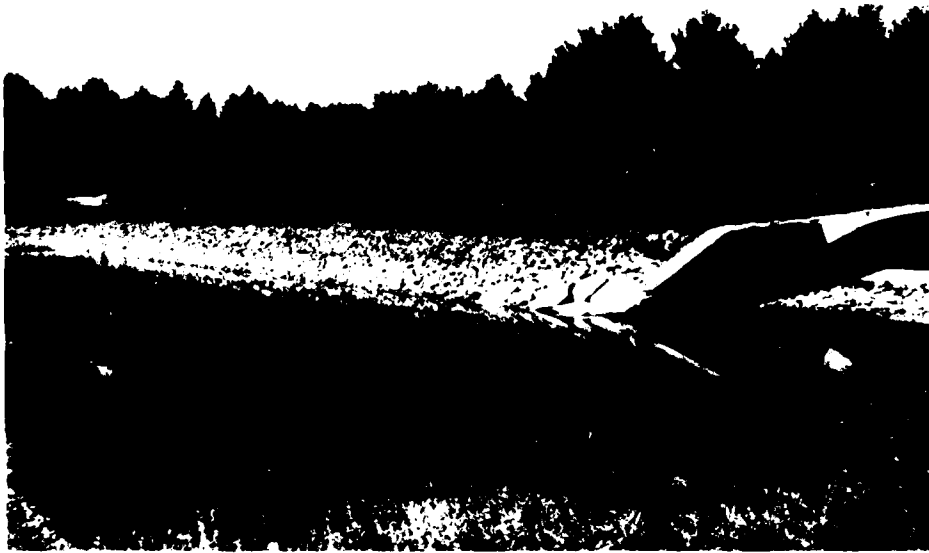
	<u>Page</u>
SECTION 6 - STRUCTURAL STABILITY	19
6.1 Evaluation of Structural Stability	19
SECTION 7 - ASSESSMENT, RECOMMENDATIONS, AND REMEDIAL MEASURES	20
7.1 Dam Assessment	20
7.2 Recommendations	20
7.3 Remedial Measures	21
7.4 Alternatives	21

APPENDIXES

APPENDIX A - PERIODIC INSPECTION CHECKLIST	
APPENDIX B - PLAN OF DAM AND PREVIOUS INSPECTION REPORTS	
APPENDIX C - PHOTOGRAPHS	
APPENDIX D - HYDROLOGIC AND HYDRAULIC COMPUTATIONS	
APPENDIX E - INFORMATION AS CONTAINED IN THE NATIONAL INVENTORY OF DAMS	

KENDALL RESERVOIR DAM

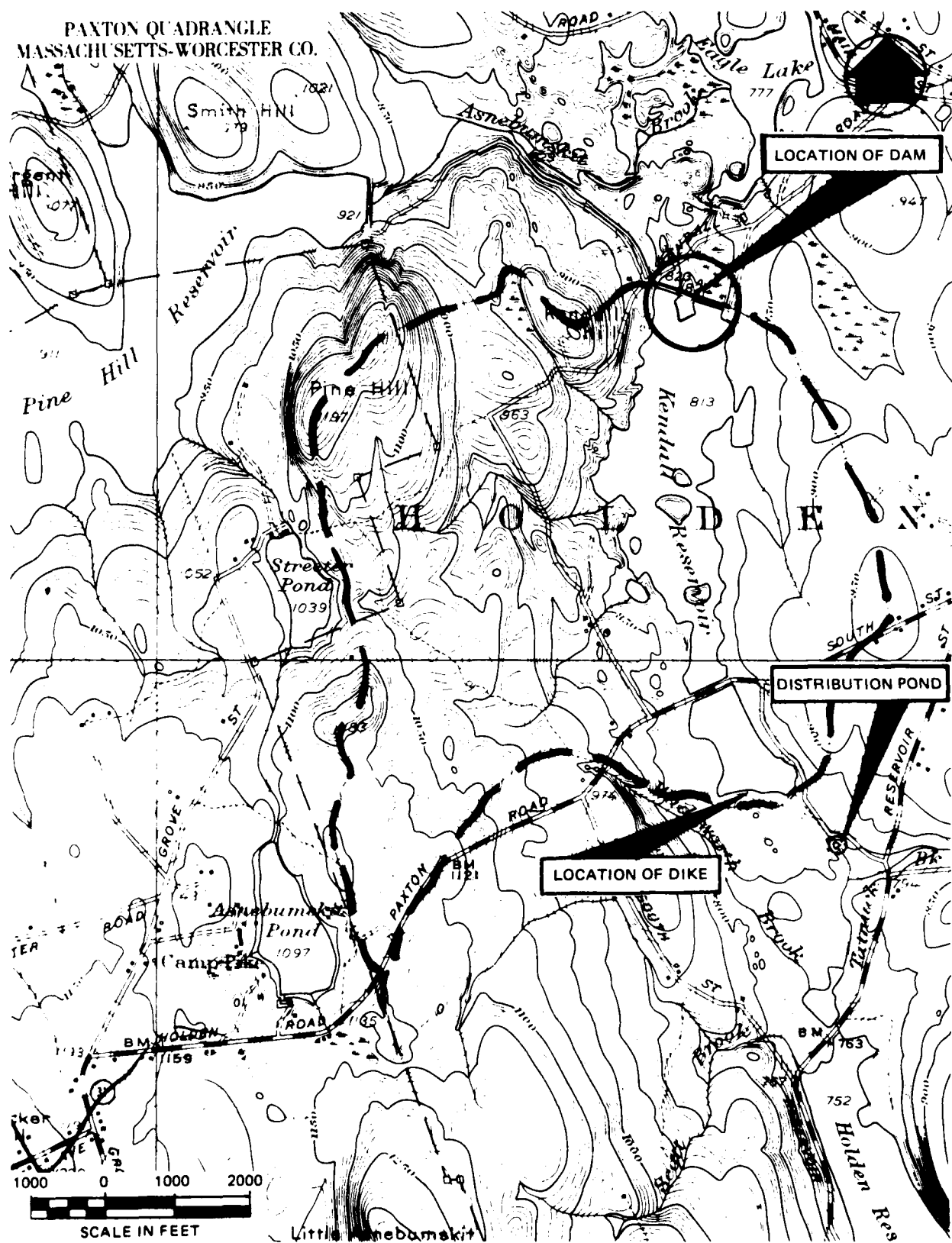
**OVERVIEW
KENDALL RESERVOIR
HOLDEN, MASSACHUSETTS**



UPSTREAM FACE OF DAM, AND SPILLWAY

**Location and Direction of Photographs
Shown on Figure in Appendix B**

PAXTON QUADRANGLE
MASSACHUSETTS-WORCESTER CO.



LOCATION MAP - KENDALL RESERVOIR DAM

NATIONAL DAM INSPECTION
PROGRAM

PHASE I INSPECTION REPORT

KENDALL RESERVOIR DAM

SECTION 1

PROJECT INFORMATION

1.1 General

a. Authority. Public Law 92-367, August 8, 1972, authorized the Secretary of the Army, through the Corps of Engineers, to initiate a national program of dam inspection throughout the United States. The New England Division of the Corps of Engineers has been assigned the responsibility of supervising the inspection of dams within the New England Region. Metcalf & Eddy, Inc. has been retained by the New England Division to inspect and report on selected dams in the State of Massachusetts. Authorization and notice to proceed was issued to Metcalf & Eddy, Inc. under a letter of July 28, 1978, from Ralph T. Garver, Colonel, Corps of Engineers. Contract No. DACW 33-78-V-0306 has been assigned by the Corps of Engineers for this work.

b. Purpose

- (1) Perform technical inspection and evaluation of non-Federal dams to identify conditions which threaten the public safety and thus permit correction in a timely manner by non-Federal interests.
- (2) Encourage and assist the States to initiate quickly effective dam safety programs for non-Federal dams.
- (3) Update, verify and complete the National Inventory of Dams.

KENDALL RESERVOIR DAM

1.2 Description of Project

- a. Location. Kendall Reservoir Dam is located on Kendall Brook, a tributary of Asnebumskit Brook, in the Town of Holden, Worcester County, Massachusetts (see Location Map).
- b. Description of Dam and Appurtenances. There are two impoundment structures on Kendall Reservoir: an earthfill dam at the northern end, and an earthfill dike at the southern end. Route 31 (South Road) crosses the reservoir on an embankment near the southern end (see Location Map). The main dam is a maximum 39 feet high and is divided into two sections by a ridge of natural ground. The east section is about 740 feet long and the west section about 380 feet long. The flat, grass-covered crest is about 25 feet wide. The average elevation of the crest varies only slightly from 819.9 at the upstream side, to 820.7 at the downstream side. The upstream face of the dam is protected with riprap, and the slope is estimated at 2:1 (horizontal: vertical). The downstream face, which is covered with grass, slopes at about 2 to 2.5:1. The toe at the downstream slope is generally at the tree line.

There are three manholes on the crest of the dam: two, 100 feet, and one, 400 feet west of the right abutment. The first two manholes provide access to a surge relief chamber and two valves. The line is a 36-inch riveted steel force main through which water is pumped from Quinapoxet Reservoir to Kendall Reservoir. Two 11 mgd (million gallons per day) pumps at Quinapoxet Reservoir pump the water through the line. The outlet for the pipe is submerged about 10 feet below the elevation of the crest of the spillway. A blow-off pipe for this line can be seen protruding from the upstream face of the dam, overhanging the reservoir.

The third manhole, at 400 feet west of the east abutment, provides access to the low-level outlet. This manhole was opened, and

KENDALL RESERVOIR DAM

found to be a dry, concrete chamber. The gate valve was not visible from the ground surface.

There is a concrete headwall at the outlet of the conduit, in the woods beyond the downstream toe of the dam. This headwall is mostly buried under soil and debris, and the pipe is not visible.

The concrete rectangular channel spillway is located about 350 feet east of the west abutment. It is a flat, broad-crested weir constructed with a concrete slab and concrete side walls.

The crest of the spillway, which is 35 feet long, is at El 813.0 (benchmark elevation estimated from a U.S.G.S. topographic map). Flashboards on the crest of the weir are 1.5 inches thick and a total of 18 inches high. The flashboards are supported by seven square iron pins. There is also a concrete arched footbridge spanning the spillway. The spillway side walls are 8 feet high at the maximum. The concrete downstream channel is 35 feet wide, 130 feet long, and slopes at about 7:1 (estimated from Figure B-1). The side walls are also concrete, and about 3 feet high.

The Asnebumskit Canal (see Figure B-2) is an open concrete channel that conveys water from Pine Hill Reservoir to Kendall Reservoir. The discharge spillway for the canal is located upstream of the west abutment of the dam. Water flows over the 120-foot long concrete weir and down a gently dipping (3:1) field-stone cascade. The crest of this weir is 3 feet higher than the crest of the spillway at the dam. Flow into the canal and therefore into Kendall Reservoir is controlled by a dam and headworks situated about 1/2-mile northwest on Asnebumskit Brook.

The dike at the southern end of the reservoir is 210 feet long and a maximum of 7 feet high (see Figure B-3, Plan of Dike). The crest of the dike is generally 27 feet wide, except in the area of the gate house. The elevation of the grass-covered crest varies from 820.8 to

KENDALL RESERVOIR DAM

823.0. The upstream slope is approximately 3:1 and covered with riprap. The downstream face, which slopes at 2:1, is covered with grass. There is also a concrete staircase on downstream face that is used as a walkway to the gate house.

The gate house is located on an earth berm which extends into the reservoir from about the midpoint of the dike. It is a single-story concrete superstructure on a concrete foundation. The intake structure is rectangular and extends below the floor of the gate house. Two gates allow water to enter a buried 30-inch cast-iron outlet pipe which leads to the distribution basin about 1,000 feet downstream.

- c. Size Classification. Kendall Reservoir Dam is classified in the "intermediate" category since it has a maximum height of 39 feet and a maximum storage capacity of 3,915 acre-feet.
- d. Hazard Classification. Kendall Reservoir is situated in an undeveloped rural area northwest of the City of Worcester. Failure of the dike would result in minor damage to woodland before the flood was channeled into Tatnuck Brook and Holden Reservoir No. 1. However, if the dam failed, the resulting flood water would be discharged to Eagle Lake, about 1/4-mile downstream. Flood water from Kendall Reservoir would raise the level in Eagle Lake, resulting in flooding in the Main Street and High Street areas north of Eagle Lake, and considerable damage to property, and possibly loss of life. For this reason, the dam has been placed in the "high" hazard category. This hazard would be compounded if the flooding resulted in failure of the Eagle Lake dam as well.
- e. Ownership. The reservoir, dam, and dike are owned by the Department of Public Works Operations-Water, City of Worcester, 20 East Worcester Street, Worcester, Massachusetts and are a significant element of the water supply system. Mr. Kenneth Starbard, Supervisor of Water Supply (telephone 617-829-4811), granted

KENDALL RESERVOIR DAM

permission to enter the property and inspect the dam.

- f. Operator. The Supervisor of Water Supply and his staff operate the outlets at the dam as well as pumping stations appurtenant to the system.
- g. Purpose of Dam. The purpose of the dam is to provide storage for the City of Worcester water supply. There are four other integrated reservoirs in the area: Quinapoxet to the north, Pine Hill to the west, and Holden Reservoirs No. 1 and No. 2 to the south.
- h. Design and Construction History. The only plan available for this dam is dated 1905. However, the dam was presumably constructed sometime after 1911, which is when the design was approved by the Worcester County Commissioners. The Asnebumskit Canal, from Pine Hill Reservoir, was apparently built at about the same time. The force main from Quinapoxet Reservoir was not in operation until 1931. Generally the dam has been maintained in good condition since the time of construction. Slight seepage through the embankment of the dam has been noted since the earliest inspection reports (1928). An inspection report dated 1965 cited the deterioration of the concrete spillway. There is no record of subsequent repairs to the concrete. In fact, the inspection reports for both 1965 and 1973 have descriptions similar to the present condition of the spillway. According to the Supervisor of Water Supply, the only previous work in the area pertained to the maintenance of the embankment and grounds.
- i. Normal Operational Procedures. The normal operating procedure at this dam, and at the other dams in the area, is to attain maximum storage in the reservoir, without any waste (overflow) out of the watershed via the spillway. For this reason the flashboards at the spillway remain in place all year round. In addition to direct surface drainage, Kendall Reservoir receives flow from both Quinapoxet and Pine Hill Reservoirs. Discharge from the reservoir is through the

KENDALL RESERVOIR DAM

outlets at the dike, and eventually into distribution reservoirs (Holden Reservoirs No. 1 and No. 2). These outlets remain open as required to maintain the water level in Holden Reservoir No. 2.

1.3 Pertinent Data

- a. Drainage Area. The direct drainage area to Kendall Reservoir is approximately 1,209 acres (1.89 square miles). It consists of hilly woodland areas with limited residential development on South Road (Route 31). Storage at the reservoir is increased by pumping from Quinapoxet Reservoir (maximum rate 22 mgd) and discharge from Pine Hill through the Asnebumskit Canal.
- b. Discharge at the Dam Site. Normal discharge from the reservoir occurs over the spillway at the dam, to the tributary stream leading to Eagle Lake, about 1/4 mile downstream. Water for the water supply system is discharged through the gates at the dike. Water flows across the drainage divide in a buried 30-inch cast-iron pipe to an open distribution pool about 1,000 feet south of the dike. From there the flow travels in a natural stream channel (Tatnuck Brook) to Holden Reservoir No. 1.

Hydraulic analyses indicate that the spillway can discharge 2,022 cfs at about El 820.0, which is approximately the top of the dam. An outflow test flood of 1,700 cfs (the probable maximum flood) will not overtop the dam.

The dam was not overtopped in the 1938 or 1955 floods.

- c. Elevation (feet above Mean Sea Level (MSL)). A benchmark was established on the crest of the spillway at El 813.0 which was estimated from a U. S. Geological Survey topographic map.

(1) Top dam: Main Dam: 819.7 to 821.0
Dike: 820.3 to 823.0

(2) Test flood pool: 819.2

KENDALL RESERVOIR DAM

- (3) Design surcharge (original design):
Unknown
- (4) Full flood control pool: Not applicable
(N/A)
- (5) Recreation pool: N/A
- (6) Spillway crest: 813.0
- (7) Upstream portal invert diversion tunnel:
N/A
- (8) Stream bed at dam (outlet channel):
782.0
- (9) Maximum tailwater: None

d. Reservoir

- (1) Length of maximum pool: 7,200 feet
- (2) Length of recreation pool: N/A
- (3) Length of flood control pool: N/A

e. Storage (acre-feet)

- (1) Test flood surcharge (net): 1,060 at El
819.2
- (2) Top of dam: 3,915
- (3) Flood control pool: N/A
- (4) Recreation pool: N/A
- (5) Spillway crest: 2,700 (with 18-inch
flashboards)

f. Reservoir Surface (acres)

- *(1) Top dam: 171
- *(2) Maximum pool: 171

*Based on the assumption that the surface area will not significantly increase with changes in reservoir elevation from 813.0 to 820.1.

KENDALL RESERVOIR DAM

- (3) Flood-control pool: N/A
- (4) Recreation pool: 171
- (5) Spillway crest: 171

g. Dam

- (1) Type: Main dam: earthfill
Dike: earthfill
- (2) Length: Main dam: 1,120 feet
Dike: 210 feet
- (3) Height: Main dam: 39 feet - maximum
Dike: 7 feet - maximum
- (4) Top width: Main dam: 25 feet
Dike: 27 feet
- (5) Side slopes: Main dam - Upstream: 2:1
Downstream: 2 to 2.5:1
Dike - Upstream: 3:1
Downstream: 2:1
- (6) Zoning: Unknown
- (7) Impervious core: Shown on plan (Figure B-2) but no additional information.
- (8) Cutoff: Unknown
- (9) Grout curtain: Unknown

1. Spillway

- (1) Type: Broad-crested weir - flashboards
- (2) Length of weir: 35 feet
- (3) Crest elevation: 813.0
814.5 (top of
flashboards)
- (4) Gates: None
- (5) Upstream channel: Stone pavement, and
concrete wingwalls.
- (6) Downstream channel: Concrete channel
with vertical walls; maximum 35 feet

KENDALL RESERVOIR DAM

wide, 3 feet deep. Channel is 120 feet long, then changes to stone pavement and natural stream bed.

- j. Regulating Outlets. The low level outlet at the dam is not visible, but is reported operated by a gate valve accessible through a manhole on the crest. The outlet at the dike consists of a concrete gate house built over an open, rectangular well. Two outlets controlled by a slide gate allow flow to enter the 30-inch cast-iron outlet pipe which leads to the distribution pool about 1,000 feet downstream.

KENDALL RESERVOIR DAM

SECTION 2

ENGINEERING DATA

- 2.1 General. The only plans available for Kendall Reservoir Dam are a plan of the spillway and embankment, dated 1905, and two plans of the Asnebumskit Canal, Headworks, and spillway, dated 1906. There are no plans for the dike. There are no specifications or computations available from the Owner, State, or County offices, relative to the design and construction of the dam or dike. The remaining data available for this evaluation were visual observations made during inspection, review of previous inspection reports, and conversations with City, State, and County personnel.

We acknowledge the assistance and cooperation of personnel of the Massachusetts Department of Public Works: Messrs. Willis Regan and Raymond Rochford, and of the Massachusetts Department of Environmental Quality Engineering, Division of Waterways: Messrs. John J. Hannon and Joseph Iagallo.

Also, we acknowledge the cooperation and assistance of personnel from the Worcester County Engineer's Office: Messrs. John O'Toole, Joseph Brazauskas, and Mr. Wallace Lindquist - recently retired from county service.

Mr. Kenneth Starbard, and personnel from the Worcester Department of Public Works Operations-Water, provided information on the construction, history, and operation of the dam.

- 2.2 Construction Records. There are no construction records available.
- 2.3 Operating Records. Operation records are kept at the Department of Public Works office in Worcester. These are daily reports of water level, storage volume, rainfall, pumping rates from Quinapoxet Reservoir, depth of flow over weir, and volume of overflow into Wachusett Reservoir.

KENDALL RESERVOIR DAM

2.4 Evaluation

- a. Availability. There is very little engineering data available for this dam. The Department of Public Works file is incomplete.
- b. Adequacy. The lack of in-depth engineering data did not allow for a definitive review. Therefore the adequacy of this dam could not be assessed from the standpoint of reviewing design and construction data, but is based primarily on visual inspection, past performance history and engineering judgment.
- c. Validity. The 1905 drawing of Kendall Dam was compared to the existing conditions at the site. Apparently the gate house shown on the plan was never constructed. This and other minor discrepancies suggest that the drawing is not entirely valid.

KENDALL RESERVOIR DAM

SECTION 3

VISUAL INSPECTION

3.1 Findings

- a. General. The Phase I Inspection of the dam and dike at Kendall Reservoir was performed on September 13, 1978. A copy of the inspection checklist is in Appendix A. Previous inspections of this dam have been made by others since 1924. A partial listing of these inspections is in Appendix B. Copies of the 1973 inspection reports by the Massachusetts Department of Public Works for both the dam and the dike are also included in Appendix B.
- b. Dam. The earthfill dam at the north end of the reservoir is in good condition. The major area of concern is the seepage about 55 feet beyond the downstream toe of the dam. This seepage occurs in the woods, in the vicinity of the buried concrete headwall of the low-level outlet. Slight settlement of the crest was noted along the alignment of the outlet pipe. A second area of slight seepage was noted at the downstream toe of the embankment, to the left of the spillway. In addition, a number of animal burrows were apparent on the crest and downstream slope of the dam. Otherwise the embankment is flat, straight, and free of trees and brush. The riprapped upstream slope of the dam is in very good condition. Generally, the embankment appears to be well-maintained by the Owner.
- c. Appurtenant Structures. The spillway at Kendall Dam is in poor condition due to deterioration of the concrete. The side walls, from the approach to the discharge channel, show severe spalling and efflorescence. The reinforcing is visible in many locations, and beginning to rust, and the crumbled concrete is accumulating on the floor of the spillway. Minor amounts of grass are growing in the construction joints on the concrete slab, and along the base of the side walls. The rest of the channel floor is in

KENDALL RESERVOIR DAM

good condition and clear of debris and vegetation. The flashboards are in place, and appear to be in good condition.

The low-level outlet structure at the dam could not be inspected. The inlet is submerged in the reservoir, and although the access manhole was opened, the gate valve was not visible from the ground surface. The headwall for the conduit outlet is buried under accumulated dirt and debris, and there are signs of seepage in the area. Apparently the outlet has not been used in many years. The force main which conducts water from Quinapoxet and Pine Hill Reservoirs is located near the right abutment, but the pipe is buried and the outlet in Kendall Reservoir is submerged.

The side channel spillway at the right abutment of the dam discharges water from the Asnebumskit Canal. The stone cascade on this spillway is in good condition, with only a few weeds growing between the stones. The concrete lining of the canal is also in good condition.

The dike and water supply outlet are located at the southern end of Kendall Reservoir. The earthfill dike ties into natural ground at both abutments. The crest is flat and clear of brush and trees. A concrete stairway is located on the downstream slope. The riprap on the upstream slope is in good condition, and supports only small amounts of vegetation.

The gate house at the dike was opened by the Supervisor of Water Supply for a brief inspection. Two slide gates regulate flow from the reservoir to the gate house well. Screens are used in the influent channels to collect floating debris. The screens are checked daily and cleaned if necessary.

- d. Reservoir Area. Since Kendall Reservoir is used for a public drinking water supply, development is prohibited near the reservoir. All the shorefront property is owned by the City of Worcester. The entire drainage area is hilly woodland, with only a very few houses.

KENDALL RESERVOIR DAM

State Route 31 (South Road) crosses the reservoir near its southern end. The only other road in the watershed is the private property of the Worcester Department of Public Works.

- e. Downstream Channel. Discharge from the spillway flows down the rectangular concrete-lined channel, over a short section of rock pavement, and into the natural stream channel. The channel is free of debris, and relatively clear of vegetation. The stream continues through woodland to Eagle Lake, about 1,500 feet north of the dam.

- 3.2 Evaluation. The dam and dike at Kendall Reservoir appear to be in good condition. However, the seepage through the downstream toe of the dam indicates a potentially hazardous situation, and the spillway is in a deteriorated condition. These structures are not adequately maintained. Recommended measures to improve these conditions are stated in Section 7.3.

SECTION 4

OPERATING PROCEDURES

- 4.1 Procedures. The storage in Kendall Reservoir is carefully controlled by the Department of Public Works Operations-Water, as it is a significant element in the public water supply system of the City of Worcester. Conduits, both pipeline and open canal, connected to the reservoir, supply water either by gravity from Pine Hill Reservoir in the west, or by pumping from Quinapoxet Reservoir, north of Kendall Reservoir. In addition, it is possible for the operators to reverse the process and pump water back up to Pine Hill Reservoir when necessary. Water stored in Kendall Reservoir is allowed to flow through the 30-inch pipe at the southern outlet to a distribution pool about 1,000 feet downstream. The water flows from the pool, which is also used for gaging flow in an open channel to Holden Reservoir No. 1. The purpose of the procedure is to: 1) maintain the maximum safe storage in all five reservoirs in the system, and at the same time prevent waste by overflow out of the watershed via the spillways, and 2) maintain a high water level in Holden Reservoir No. 2, the last reservoir in the system which serves the City of Worcester.

Daily records of operating procedures are maintained by the Worcester Department of Public Works.

- 4.2 Maintenance of Dam. The Supervisor of Water Supply for the Worcester Department of Public Works retains a staff for maintenance of the dam and related facilities. The regular work consists of mowing the grass on both the dam and the dike, removing brush and debris from firelanes, brooks, and the spillway channel, and clearing dead wood from the watershed area, as well as regulating the water levels in the reservoirs.
- 4.3 Maintenance of Operating Facilities. The screens at the gate house are checked daily and cleaned if necessary.

KENDALL RESERVOIR DAM

4.4 Description of Any Warning System in Effect.
There are no warning systems in effect at this dam.

4.5 Evaluation. An effective operating program has been developed for ensuring a constant supply of water to the City of Worcester. Maintenance of the dam and watershed is regularly scheduled, however, more attention should be paid to the maintenance of appurtenances - particularly the spillway and low-level outlet. In addition, the need for an emergency warning procedure is evident, considering that the dam is in the "high" hazard category. Recommendations for a more thorough maintenance program and a warning system are included in Section 7.3.

KENDALL RESERVOIR DAM

SECTION 5

HYDRAULIC/HYDROLOGIC

5.1 Evaluation of Features

- a. Design Data. The probable maximum flood (PMF) rate was determined to be 2,000 cfs per square mile. This calculation is based on an average drainage area slope of 6.6 percent, the pond-plus-swamp area to drainage area ratio of 14 percent, and the U.S. Army Corps of Engineers' Flow Rates (dated December 1977). Applying the full PMF rate to the 1.89 square miles of drainage area results in a calculated peak flood flow of 3,780 cfs as the inflow test flood. By adjusting the inflow test flood for surcharge storage, the maximum discharge rate was established as 1,700 cfs (900 cfs per square mile) with the water surface at El 819.2. During peak outflow, the spillway (without flashboards) would be discharging 100 percent of the surcharge, and about one foot of freeboard would remain at the dam. Hydraulic analyses indicate that the spillway has the capacity to discharge up to 2,022 cfs at reservoir El 820 (approximately the top of the dam).
- b. Experience Data. The daily operating records for the 1938 and 1955 floods were reviewed at the Department of Public Works office. These indicated that the dam was not overtopped in either storm.
- c. Visual Observations. At the time of the inspection the water level in the reservoir was almost 2 feet below the crest of the spillway. The concrete on the spillway and particularly on the sidewalls is badly spalled. Although this condition is not particularly hazardous at this time, it should be corrected as continued deterioration could result in collapse of the spillway walls. Also, the low-level outlet at the dam was blocked with soil and debris. This should be cleared to allow the

KENDALL RESERVOIR DAM

d. Overtopping Potential. As noted previously, neither the dam nor the dike would be overtopped by the test flood. Were the dam to fail, the initial outflow would be in the order of 45,000 cfs, producing an initial wave with a height of 13 feet at a velocity of 10 feet per second.

It would take 2.2 hours for the reservoir to drain, and the flood would flow to Eagle Lake.

KENDALL RESERVOIR DAM

SECTION 6
STRUCTURAL STABILITY

6.1 Evaluation of Structural Stability

- a. Visual Observations. The evaluation of the stability of Kendall Reservoir dam and dike is based on the visual inspection conducted on September 13, 1978. As discussed in Section 3, Visual Inspection, the embankments appear to be in good condition. However, the seepage near the downstream toe and the numerous animal burrows indicate a possibly hazardous situation.
- b. Design and Construction Data. There is only one plan available on the design of this dam. This plan (Figure B-2) shows a core wall of unidentified composition. The validity of this drawing is in question, however, because it also shows a two-story gate chamber which does not exist at this time. Furthermore, information does not appear to exist on the type, shear strength, and permeability of the soil and/or rock materials of the embankment.
- c. Operating Records. There is no evidence that instrumentation of any type was ever installed in Kendall Reservoir Dam. The performance of this dam under prior loading can only be inferred by physical evidence at the site.
- d. Post-Construction Changes. There are no as-built drawings available for Kendall Reservoir Dam.
- e. Seismic Stability. The dam is located in Seismic Zone No. 2 and in accordance with Phase I "Recommended Guidelines" does not warrant seismic analyses.

KENDALL RESERVOIR DAM

SECTION 7
ASSESSMENT, RECOMMENDATIONS,
AND REMEDIAL MEASURES

7.1 Dam Assessment

- a. Condition. Kendall Reservoir Dam was neither designed nor constructed according to the current approved state-of-the-art procedures. Based on the visual inspection of the site, there are areas of concern which must be corrected to assure the continued performance of this dam. Generally, the dam is considered to be in good condition. The major problems are the deteriorated concrete on the spillway, and the seepage at the downstream toe of the dam, near the buried outlet headwall.

Hydraulic analyses indicate that the spillway without flashboards can discharge a flow of 1,700 cfs (the full test flood) without overtopping the dam.

- b. Adequacy. The lack of in-depth engineering data did not allow for a definitive review. Therefore the adequacy of this dam could not be assessed from the standpoint of reviewing design and construction data, but is based primarily on visual inspection, past performance history and engineering judgment.
- c. Urgency. The recommendations and remedial measures outlined below should be implemented by the Owner within two years after receipt of this Phase I Inspection Report. However, repair of the concrete walls and floor of the spillway should be undertaken within one year.
- d. Need for Additional Investigations. Additional investigations to further assess the adequacy of the dam are outlined below in Section 7.2, Recommendations.

- 7.2 Recommendations. In view of the concerns over the continued performance of the dam it is recommended that the Owner employ a qualified consultant to investigate the seepage at the toe of the dam.

KENDALL RESERVOIR DAM

The recommendations on repairs and maintenance procedures are outlined below under Section 7.3, Remedial Measures.

7.3 Remedial Measures

a. Operating and Maintenance Procedures. The ground and embankments of the dam and dike are well maintained. However, it is recommended that the Owner add the following items to the maintenance program:

- (1) rebuild or repair the concrete sidewalls to the spillway, and resurface the floor of the channel
- (2) replace the "permanent" flashboards with collapsible flashboards designed to break away during periods of high flow or remove the flashboards,
- (3) remove the debris from the low-level outlet, and clear the trees away from the toe to expose the seepage area,
- (4) fill in the animal burrows on the crest and downstream slopes of both the dam and the dike,
- (5) all repairs and maintenance should be undertaken in accordance with all applicable State regulations,
- (6) institute a definite plan for surveillance and a warning system during periods of unusually heavy rains and/or runoff,
- (7) technical inspections of this dam should be conducted on a bi-annual basis.

7.4 Alternatives. An alternative to implementing the recommendation and the maintenance procedures itemized above would be to lower the water level in the reservoir.

KENDALL RESERVOIR DAM

APPENDIX A
PERIODIC INSPECTION
CHECKLIST

KENDALL RESERVOIR DAM

PERIODIC INSPECTION

PARTY ORGANIZATION

PROJECT Kendall Reservoir

DATE 13 Sept. 1978

TIME 1:00 pm

WEATHER sunny, 70°

W.S. ELEV. 811.7 U.S. - DN.S.

Assumed benchmark El 813 on crest of spillway Based on USGS topographic map

PARTY:

- | | |
|-------------------------|-----------|
| 1. <u>Ed Greco</u> | 6. _____ |
| 2. <u>Susan Pierce</u> | 7. _____ |
| 3. <u>Dan Bornstein</u> | 8. _____ |
| 4. <u>Lyle Branagan</u> | 9. _____ |
| 5. _____ | 10. _____ |

PROJECT FEATURE	INSPECTED BY	REMARKS
1. <u>Dam / Dike</u>	<u>E. Greco / S. Pierce</u>	
2. <u>Spillway / Gate</u>	<u>L. Branagan / D. Bornstein</u>	
3. _____		
4. _____		
5. _____		
6. _____		
7. _____		
8. _____		
9. _____		
10. _____		

PERIODIC INSPECTION CHECK LIST

PROJECT Kendall Dam DATE 9-13-78
 PROJECT FEATURE Dam NAME E. Greco
 DISCIPLINE Geotechnical NAME S. Pierce

Note: d/s = downstream u/s = upstream

AREA EVALUATED	CONDITIONS
<u>AN EMBANKMENT</u>	
Crest Elevation	Downstream side of crest higher than upstream. varies from 819.7 to 821
Current Pool Elevation	811.7
Maximum Impoundment to Date	unknown
Surface Cracks	none visible
Pavement Condition	grass crest / 3 manholes on crest 2-100' from right abutment, 1-400' from rt abt.
Movement or Settlement of Crest	small hole on crest
Lateral Movement	none visible
Vertical Alignment	relatively flat
Horizontal Alignment	relatively straight
Condition at Abutment and at Concrete Structures	abutments tie into natural ground
Indications of Movement of Structural Items on Slopes	none
Trespassing on Slopes	wood chuck holes near left spillway abutment
Sloughing or Erosion of Slopes or Abutments	none
Rock Slope Protection - Riprap Failures	riprap on upstream slope in good condition
Unusual Movement or Cracking at or near Toes	none
Unusual Embankment or Downstream Seepage	55' from d/s toe - slight seep in vicinity of buried concrete headwall, in line with outlet manhole. D/s toe at left end of dam wet
Piping or Boils	settlement visible along crest from manhole to buried headwall
Foundation Drainage Features	none visible
Toe Drains	none visible
Instrumentation System	unknown

PERIODIC INSPECTION CHECK LIS.

PROJECT Kendall

DATE 9-13-78

PROJECT FEATURE Dike

NAME E Greco

DISCIPLINE Geotechnical

NAME S Pierce

AREA EVALUATED	CONDITION
<u>DIKE EMBANKMENT</u>	Earthfill dike at south end of Kendall Reservoir
Crest Elevation	820.8 to 823.0
Current Pool Elevation	811.7
Maximum Impoundment to Date	unknown
Surface Cracks	none
Pavement Condition	grass crest
Movement or Settlement of Crest	none - minor irregularities to surface
Lateral Movement	none visible
Vertical Alignment	relatively flat
Horizontal Alignment	relatively straight
Condition at Abutment and at Concrete Structures	no concrete. Dike ties into natural ground at both abutments, possible backrock outcrop at left abutment
Indications of Movement of Structural Items on Slopes	none
Trespassing on Slopes	none, (concrete steps on d/s face of dam)
Sloughing or Erosion of Slopes or Abutments	none; separation between mortared riprap and gatehouse
Rock Slope Protection - Riprap Failures	riprap on u/s slope, grouted only in vicinity of gate structure
Unusual Movement or Cracking at or near Toes	none visible
Unusual Embankment or Downstream Seepage	none
Piping or Boils	none
Foundation Drainage Features	none
Tail Drains	none
Instrumentation System	none

PERIODIC INSPECTION CHECK LIST

PROJECT Kendall Reservoir DATE 9-13-78
 PROJECT FEATURE Gate House NAME L Branagan
 DISCIPLINE _____ NAME D Bernstein

AREA EVALUATED	CONDITION
<u>OUTLET WORKS - CONTROL TOWER</u>	Paired concrete superstructure and foundation, built on end of earth berm
1. Concrete and Structural	Concrete headwall at ups face of structure
General Condition	good - minor exposed aggregate at water line
Condition of Joints	good
Spalling	none
Visible Reinforcing	none
Rusting or Staining of Concrete	none
Any Seepage or Efflorescence	minor efflorescence at water line
Joint Alignment	good
Unusual Seepage or Leaks in Gate	gate not visible
Cracks	none
Rusting or Corrosion of Steel	n/a
2. Mechanical and Electrical	n/a
Air Vents	"
Float Wells	"
Crane Hoist	"
Elevator	"
Hydraulic System	"
Service Gates	"
Emergency Gates	"
Lightning Protection System	"
Emergency Power System	"
Wiring and Lighting System in Gate Chamber	"

PERIODIC INSPECTION CHECK LIST

PROJECT Kendall Reservoir

DATE 9-13-78

PROJECT FEATURE outlet at stilling basin

NAME L Branagan

DISCIPLINE _____

NAME D Bornstein

AREA EVALUATED	CONDITION
<u>OUTLET WORKS - OUTLET STRUCTURE * AND OUTLET CHANNEL</u>	
General Condition of Concrete	Good around stilling basin; piers at weir in poor condition
Rust or Staining	weir plate slightly rusted
Spalling	heavy spalling of piers at weir
Erosion or Cavitation	none
Visible Reinforcing	none
Any Seepage or Efflorescence	slight efflorescence at piers
Condition at Joints	n/a
Drain Holes	none
Channel	stone-masonry side walls 2' wide, 1-3' high extend 50 feet d/s of weir
Loose Rock or Trees Overhanging Channel	none
Condition of Discharge Channel	natural stone and gravel pavement, some weeds growing in channel near ups end

* 30 inch cast iron outlet pipe from gate house to stilling basin
Basin is concrete-lined with iron weir plate
outlet pipe stands vertically (submerged) in center of basin

PERIODIC INSPECTION CHECK LIST

PROJECT Kendall Reservoir DATE 9-13-78
 PROJECT FEATURE Spillway NAME L. Brainagan
 DISCIPLINE Hydraulics NAME D. Bornstein

AREA EVALUATED	CONDITION
<u>OUTLET WORKS - SPILLWAY WEIR, APPROACH AND DISCHARGE CHANNELS</u>	
a. Approach Channel	earth with random stone and cobbles, concrete training walls
General Condition	channel in fair condition; walls in very poor condition - concrete spalled
Loose Rock Overhanging Channel	none
Trees Overhanging Channel	none
Floor of Approach Channel	earth
b. Weir and Training Walls	flat concrete slab with concrete walls, concrete pedestrian bridge arches over spillway
General Condition of Concrete	weir - fair walls - very poor
Rust or Staining	slight, visible on reinforcing
Spalling	severe
Any Visible Reinforcing	yes, in numerous locations
Any Seepage or Efflorescence	severe efflorescence; no seepage
Drain Holes	none
c. Discharge Channel	concrete channel changes to earth channel
General Condition	walls in very poor condition
Loose Rock Overhanging Channel	none
Trees Overhanging Channel	none
Floor of Channel	concrete slabs change to earth channel
Other Obstructions	none

APPENDIX B

PLAN OF DAM AND PREVIOUS
INSPECTION REPORTS

	<u>Page</u>
Figure B-1. Plan of Dam, 1978 Survey	B-1
Figure B-2. Plan of Dam	B-2
Figure B-3. Plan of Dike	B-3
Figure B-4. Plan of Canal at Dam	B-4
Previous Inspections (Partial Listing)	B-5
Inspection Reports by Massachusetts Department of Public Works, March, 1973	B-7

KENDALL RESERVOIR DAM

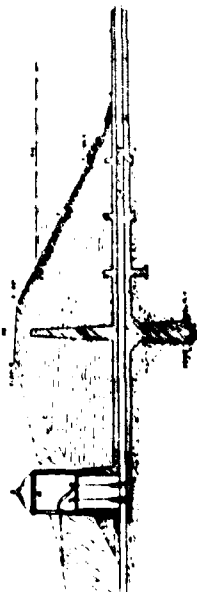
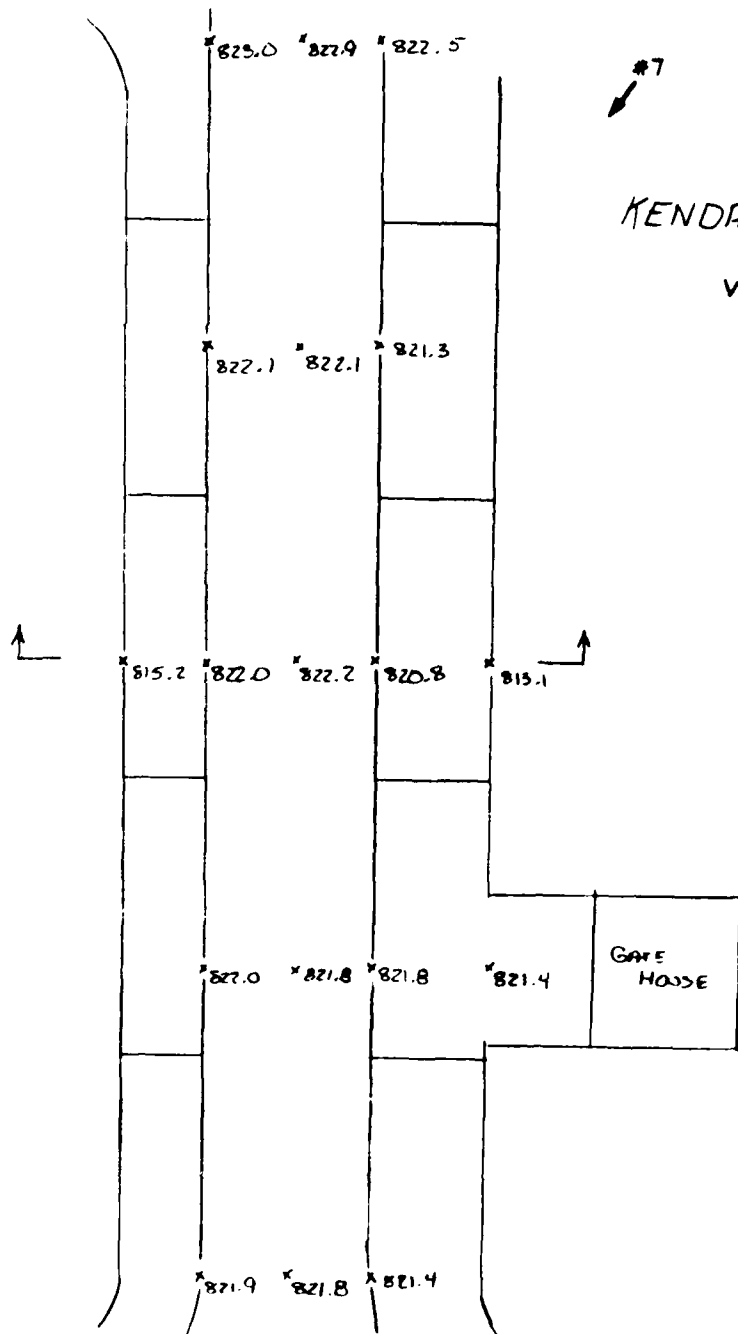


FIGURE B-2
 WORCESTER COUNTY COMMISSIONERS
 WORCESTER GOVERNMENT CENTER DEPARTMENT
 PLAN OF
 DAM
 ADRIAN RIVER
 HOLDEN MASS
 FOR THE CITY OF WORCESTER
 AS FILED AND APPROVED BY THE
 COUNTY COMMISSIONERS
 DOCKET #466
 NOTES AS NOTED
 TRACED BY SCOLORON 7/9/42
 TRACKING CHECKED BY T. G. KELLY 11/2/42 DAM NO. 2-104
 APPROVED: MAR 24 1942
 [Signature]

NOTE: THIS DRAWING HAS BEEN
 RECEIVED 50%
 FRED W. WILSON ARCHT. MAR 31 1942



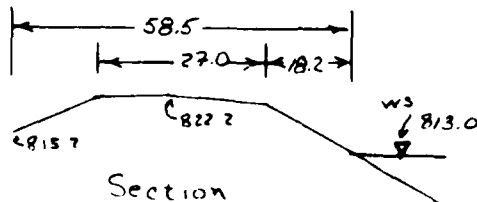
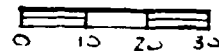
KENDALL RESERVOIR

WS. 813.0

NOTES:

- 1) Elevations shown based on assumed benchmark or spillway crest 813.0 (MSL)
- 2) Information shown from field survey of Sept. 11, 1978
- 3) *7 Shows direction of view of photograph
- 4) See figure B-1 for PLAN OF DAM.

Scale in Feet

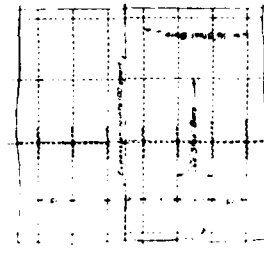


WETZEL & EDDY, INC. ENGINEERS BOSTON, MA.	U.S. ARMY ENGINEER DIV. NEW ENGLAND COMPS OF ENGINEERS GALTHAM, MA.
NATIONAL PROGRAM OF INSPECTION OF NON-FED. DAMS	
KENDALL RESERVOIR DAM	
FIGURE B-2, PLAN OF DIKE	
TRIBUTARY NARRUA RIVER	MASSACHUSETTS
SCALE: 1" = 30'	DATE: NOVEMBER, 1978

City Engineer's Office, Worcester, Mass.
 March 1906.

SECTION OF SPILLWAY at 266.

PLAN OF SPILLWAY AND LOWER END OF CONDUIT
 Scale 20' = 1"



Kendall Reservoir

ORIGINAL CONDUIT
 ORIGINAL SPILLWAY
 TYPICAL SECTION

Ashtabumskit

Canal

NOTE: THIS DRAWING HAS BEEN
 REDUCED 50%.

Approved Sept 19.06
 George W. Cook
 Thomas Goodale
 George Allen
 County Commissioners

COPIED FROM ORIGINAL
 WORCESTER COUNTY COMMISSIONERS
 RECORDS, RECORDS DEPARTMENT
 PLAN OF
 CANAL AT DAM
 ACROSS ASHTABUMSKIT BROOK
 HOLDEN, MASS.
 AS FILED AND APPROVED BY THE
 COUNTY COMMISSIONERS
 NOV 9 1906

TOWN OR CITY *Holden.* DECREE NO. *464* PLAN NO. *2-01* DAM NO. *2-01*

LOCATION *On Road from Holden to Paxton. -Kendall Brook.* C. C. DOCKET NO. *Asnebumskit by Canal.*

DESCRIPTION OF DAM		DESCRIPTION OF RESERVOIR & WATERSHED	
Type	<i>Earthen Dam. - Concrete Core Wall.</i>	Name of Main Stream	<i>Kettle (Kendall) Brook</i>
Length	<i>1300.</i>	" " any other Streams	<i>Asnebumskit by Canal.</i>
Height	<i>40.</i>	Length of Watershed	
Thickness top	<i>20.</i>	Width " "	
" bottom	<i>Greatest width bottom = 166.</i>	Is Watershed Cultivated	
Downstream Slope	<i>2:1</i>	Percent In Forests	
Upstream	<i>Riprap 24" thick</i>	Sleepiness of Slope	
Length of Spillway	<i>Crest 76 above at west end.</i>	Kind of Soil	
Size of Gates	<i>Duplicating Gate Valves 24" c.i. w.c.</i>	No. of Acres in Watershed	<i>935 88 M</i>
Location of Gates	<i>450' to left Spillway</i>	" " " Reservoir	
Flashboards used	<i>No.</i>	Length of Reservoir	
Width Flashboards or Gates		Width " "	
Dam designed by	<i>City of Worcester.</i>	Max Flow Cu. Ft per Sec.	
" constructed by		Head of Flashboards-Low Water	
Year constructed	<i>1912</i>	" " " High "	
GENERAL REMARKS	<i>Owned by City of Worcester. Water Dept with C. C. Records March 14, 1911. Vol. 30. P. 440. See City Plan # 2769. Inspected Jan. 14, 1924 L.O. Marden.</i>	GENERAL REMARKS	<i>Inspected: 3-26-37 W. O. Lindquist Traced: E. C. Carcoren, Feb. 16, 1940. Tracing checked by F.E.R. & D.M. 3-6-1940. Inspected: Dec. 27, 1940 - L. H. Spofford. Dec. 7, 1942 - L.O.M. & J.F.C. Sept. 16, 1943 - L.O.M. Elmy & Starbuck. Nov. 18, 1947. " " " Mandy L.O.M.</i>

2. Library Bureau 10-92760

PREVIOUS INSPECTIONS (PARTIAL LISTING)
 COPY OF INSPECTION CARD ON FILE AT THE MASSACHUSETTS
 DEPARTMENT OF PUBLIC WORKS, DISTRICT OFFICE, WORCESTER.

TOWN OR CITY **HOLDEN** DECREE NO. PLAN NO. DAM NO. **21-23**
 LOCATION **Upper end of Kendall Res. Dyke** C. C. DOCKET NO. **041**

DESCRIPTION OF DAM DESCRIPTION OF RESERVOIR & WATERSHED

Type	<i>Earth</i>	Name of Main Stream	
Length		" " any other Streams	
Height		Length of Watershed	
Thickness top		Width " "	
" bottom		Is Watershed Cultivated	
Downstream Slope		Percent in Forests	
Upstream "		Steepness of Slope	
Length of Spillway		Kind of Soil	
Size of Gates		No. of Acres in Watershed	
Location of Gates		" " " Reservoir	
Flashboards used		Length of Reservoir	
Width Flashboards or Gates		Width " "	
Dam designed by		Max Flow Cu. Ft per Sec.	
" constructed by		Head or Flashboards-Low Water	
Year constructed		" " " High "	

GENERAL REMARKS

City of Worcester Water Dept.

Inspected: Dec 7, 1928 - L. O. Marden
Nov 19, 1939 - " " "
Aug 24, 1932 - " " "
Mar 26, 1937 - W. O. Lindquist
Nov 1, 1943 - LOM

GENERAL REMARKS

PREVIOUS INSPECTIONS (PARTIAL LISTING)
 COPY OF INSPECTION CARD ON FILE AT THE MASSACHUSETTS
 DEPARTMENT OF PUBLIC WORKS, DISTRICT OFFICE, WORCESTER.

Recvd
DIN. of W.W.: 1-30-74

FILE REA

INSPECTION REPORT - DAMS AND RESERVOIRS

1. Location: City/Town HOLDEN Dam No. 3-14-134-4
Name of Dam KENDALL RES. DAM Inspected by MICHAUD
MULCAHY + KANN
Date of Inspection MARCH 27, 1973

2. Owner/s: per: Assessors _____ Prev. Inspection

Reg. of Deeds _____ Pers. Contact _____

1. CITY OF WORCESTER, FRANCIS J. McGRATH, CITY MANAGER
Name St. & No. City/Town State Tel. No.
2. _____
Name St. & No. City/Town State Tel. No.
3. _____
Name St. & No. City/Town State Tel. No.

3. Caretaker (if any) e.g. superintendent, plant manager, appointed by absentee owner, appointed by multi owners.

Name: _____ St. & No.: _____
City/Town: _____ State: _____ Tel. No.: _____

4. No. of Pictures taken NONE

5. Degree of Hazard: (if dam should fail completely)*

1. Minor _____ 2. Moderate _____
3. Severe 4. Disastrous _____

* This rating may change as land use changes (future development)

6. Outlet Control: Automatic _____ Manual _____
NONE Operative _____ yes; _____ No.

Comments: FLASHBOARDS CONTROL HEIGHT OF WATER AT SPILLWAY

7. Upstream Face of Dam: Conditions:

1. Good 2. Minor Repairs _____
3. Major Repairs _____ 4. Urgent Repairs _____

or Comments:

8. Downstream Face of Dams

Condition: 1. Good ✓ 2. Minor Repairs _____
3. Major Repairs _____ 4. Urgent Repairs _____

Comments:

9. Emergency Spillway: NONE

Condition: 1. Good _____ 2. Minor Repairs _____
3. Major Repairs _____ 4. Urgent Repairs _____

Comments:

10. Water Level at time of inspection: 6 ft. above _____ below ✓
top of dam ✓ principal spillway _____
other _____

11. Summary of Deficiencies Noted:

Growth (Trees and Brush) on Embankment NO
Animal Burrows and Washouts NO
Damage to slopes or top of dam NO
Cracked or Damaged Masonry YES (see #12)
Evidence of Seepage NO
Evidence of Piping NO
Erosion NO
Leaks NO
Trash and/or debris impeding flow NO
Clogged or blocked spillway NO
Other NO

12. Remarks & Recommendations: (Fully Explain)

THIS DAM IS WELL KEPT BY CITY OF WORCESTER WATER DEPT. THERE IS SOME SPALLING OF THE CEMENT CONCRETE WALLS OF THE SPILLWAY. THIS PRESENTS NO DANGER TO DAM.

13. Overall Condition:

- 1. Safe _____
- 2. Minor repairs needed _____
- 3. Conditionally safe - major repairs needed _____
- 4. Unsafe _____
- 5. Reservoir impoundment no longer exists (explain)
Recommend removal from inspection list _____

BOSTON COPY

845-S

130

DESCRIPTION OF DAM

DISTRICT 3

Submitted by MICHAUD
MULCAHY & KANN Dam No. 3-14-134-4

Date MARCH 27, 1973 City/Town HOLDEN

Name of Dam KENDALL RES. DAM

1. Location: Topo Sheet No. 20 C

Provide 8½" x 11" in clear copy of topo map with location of Dam clearly indicated.

2. Year built: _____ Year/s of subsequent repairs _____

3. Purpose of Dam: Water Supply Recreational _____

Irrigation _____ Other _____

4. Drainage Area: 9.35 sq. mi. _____ acres

5. Normal Ponding Area: 175 acres; Ave. depth _____

Impoundment: _____ gals.; _____ acre ft.

6. No. and type of dwellings located adjacent to pond or reservoir

NONE i.e. summer homes, etc. _____

7. Dimensions of Dam: Length 1100'± Max. Height 35'±

Slopes: Upstream Face 2:1

Downstream Face 2:1

Width across top 30'±

8. Classification of Dam by Material:

Earth Conc. Masonry Stone Masonry _____

Timber _____ Rockfill Other _____

9. A. Description of present land usage downstream of dam:

90 % rural; 10 % urban.

B. Is there a storage area or flood plain downstream of dam which could accommodate the impoundment in the event of a complete dam failure? yes _____ no

10. Risk to life and property in event of complete failure.

No. of people 400± .
No. of homes 50± .
No. of Businesses 6± .
No. of industries 1 . Type Textile
No. of utilities 5 . Type WATER GAS
SEWER, Tel, Elec.
Railroads 1 .
Other dams 3-14-134-07, 11 .
Other NONE .

11. Attach Sketch of dam to this form showing section and plan on 8 1/2" x 11" sheet.

12. How to Locate:

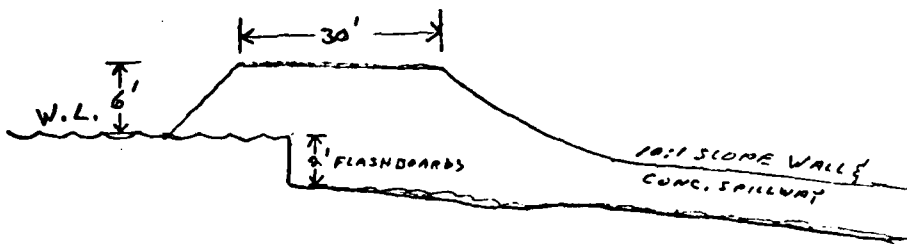
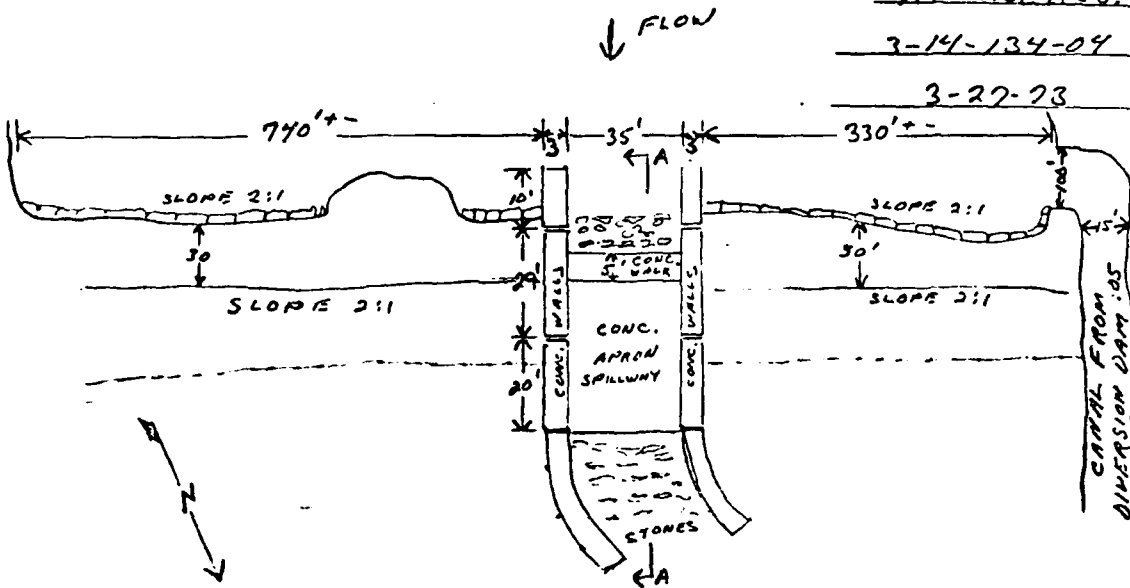
FROM RTE # 122A HEADING N'WLY TAKE A LEFT
ON KENDALL ROAD TO END, DAM ON LT.

HOLDEN

KENDALL RES. DAM

3-14-134-04

3-27-73



SECTION A-A

Recvd
Div. of W.W. 1-30-74

INSPECTION REPORT - DAMS AND RESERVOIRS

1. Locations: City/Town HOLDEN Dam No. 3-14-134-044
Name of Dam KENDALL REC. DAM Inspected by ED. MULCAHY
MARVIN R. MICHAUD
Date of Inspection 3-27-73

2. Owner/s; per: Assessors _____ Prev. Inspection
Reg. of Deeds _____ Pers. Contact _____

1. CITY OF WORCESTER FRANCIS J. McGRATH CITY MANAGER
Name St. & No. City/Town State Tel. No.
2. _____
Name St. & No. City/Town State Tel. No.
3. _____
Name St. & No. City/Town State Tel. No.

3. Caretaker (if any) e.g. superintendent, plant manager, appointed by absentee owner, appointed by multi owners.

Name: _____ St. & No.: _____
City/Town: _____ State: _____ Tel.No.: _____

4. No. of Pictures taken NONE

5. Degree of Hazard: (if dam should fail completely)*

1. Minor 2. Moderate _____
3. Severe _____ 4. Disastrous _____

* This rating may change as land use changes (future development)

6. Outlet Control: Automatic NONE Manual _____
Operative _____ yes; _____ No.

Comments:

7. Upstream Face of Dam: Condition:

1. Good 2. Minor Repairs _____
3. Major Repairs _____ 4. Urgent Repairs _____

or Comments:

8. Downstream Face of Dams

Condition: 1. Good ✓ 2. Minor Repairs _____
3. Major Repairs _____ 4. Urgent Repairs _____

Comments:

9. Emergency Spillway: NONE

Condition: 1. Good _____ 2. Minor Repairs _____
3. Major Repairs _____ 4. Urgent Repairs _____

Comments:

10. Water Level at time of inspection: 4 ft. above _____ below ✓
top of dam ✓ principal spillway _____
other _____

11. Summary of Deficiencies Noted:

Growth (Trees and Brush) on Embankment NONE
Animal Burrows and Washouts NONE
Damage to slopes or top of dam NONE
Cracked or Damaged Masonry NONE
Evidence of Seepage NONE
Evidence of Piping NONE
Erosion NONE
Leaks NONE
Trash and/or debris impeding flow NONE
Clogged or blocked spillway NONE
Other NONE

BOSTON COPY

DESCRIPTION OF DAM

DISTRICT 3

Submitted by MICHAUD MULLCAHY + KANN Dam No. 3-14-134-04A

Date MARCH 27 1973 City/Town WILMINGTON

Name of Dam KENDALL RES. DAM

1. Location: Topo Sheet No. 20C

Provide 8½" x 11" in clear copy of topo map with location of Dam clearly indicated.

2. Year built: _____ Year/s of subsequent repairs _____

3. Purpose of Dam: Water Supply Recreational _____

Irrigation _____ Other _____

4. Drainage Area: 7.5 sq. mi. _____ acres

5. Normal Ponding Area: 1 acres; Ave. depth _____

Impoundments: _____ gals.; _____ acre ft.

6. No. and type of dwellings located adjacent to pond or reservoir

NONE i.e. summer homes, etc. _____

7. Dimensions of Dam: Length 700' ± Max. Height 4'

Slopes: Upstream Face 1:1

Downstream Face 1:1

Width across top 47'

8. Classification of Dam by Materials:

Earth Conc. Masonry _____ Stone Masonry _____

Timber _____ Rockfill _____ Other _____

9. A. Description of present land usage downstream of dam:

100 % rural; _____ % urban.

B. Is there a storage area or flood plain downstream of dam which could accommodate the impoundment in the event of a complete dam failure? yes no _____

DAM NO. 3-14-134-04A

10. Risk to life and property in event of complete failure.

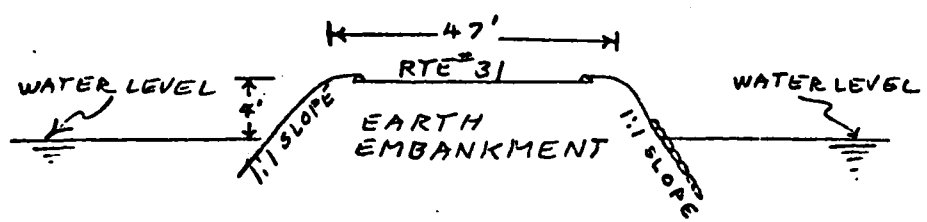
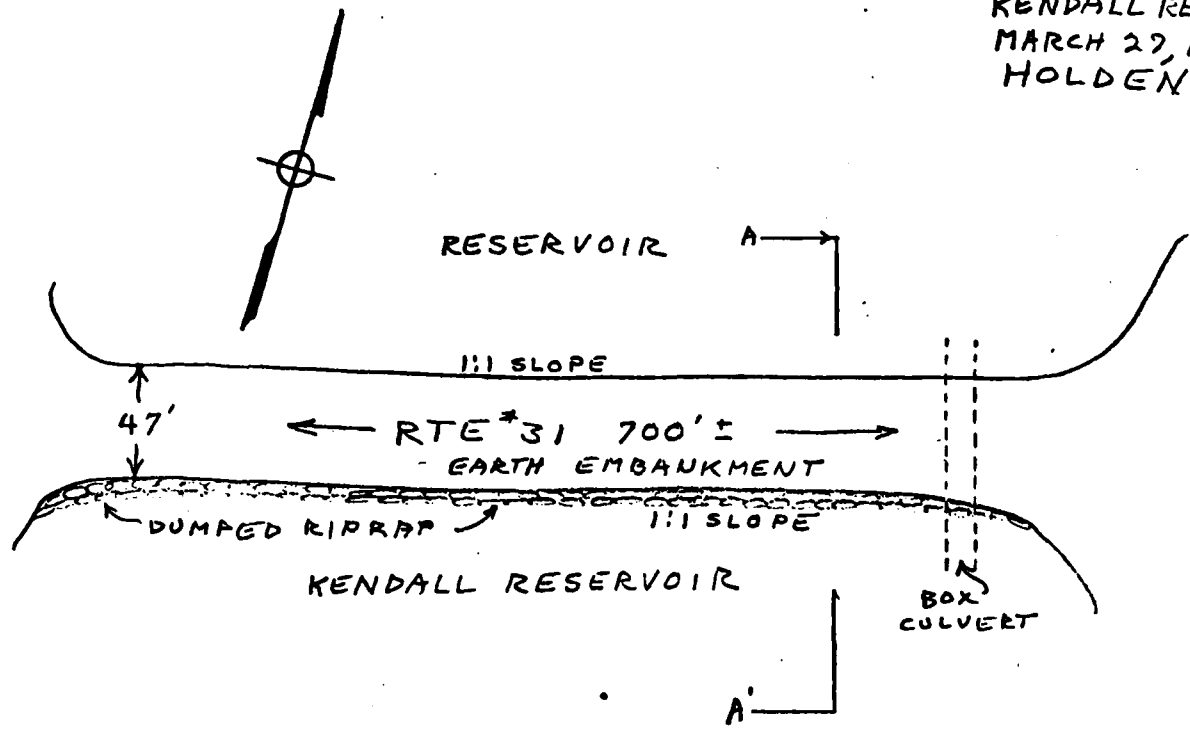
No. of people NONE .
No. of homes NONE .
No. of Businesses NONE .
No. of industries NONE . Type _____
No. of utilities NONE . Type _____
Railroads NONE .
Other dams NONE .
Other NONE .

11. Attach Sketch of dam to this form showing section and plan on 8 $\frac{1}{2}$ " x 11" sheet.

12. How to Locate:

FROM HOLDEN CENTER TAKE 31 WEST
TO RESERVOIR + DAM.

DAM#3-14-134-41
KENDALL RES. DAM
MARCH 27, 1973
HOLDEN



SECTION A-A'

Recvd
Div. of W.W. 1-30-74

INSPECTION REPORT - DAMS AND RESERVOIRS

1. Location: City/Town HOLDEN Dam No. 3-14-134-4.1
Name of Dam DAM BELOW KENDALL RES. Inspected by MICHAUD MILCAPHY + KANN
Date of Inspection MARCH 28, 1973

2. Owner/s: per: Assessors _____ Prev. Inspection
Reg. of Deeds _____ Pers. Contact _____

1. CITY OF WORCESTER FRANCIS V. McGRATH CITY MANAGER
Name _____ St. & No. _____ City/Town State Tel. No. _____

2. _____
Name _____ St. & No. _____ City/Town State Tel. No. _____

3. _____
Name _____ St. & No. _____ City/Town State Tel. No. _____

3. Caretaker (if any) e.g. superintendent, plant manager, appointed by absentee owner, appointed by multi owners.

Name: _____ St. & No.: _____
City/Town: _____ State: _____ Tel. No.: _____

4. No. of Pictures taken NONE

5. Degree of Hazard: (if dam should fail completely)*

1. Minor _____ 2. Moderate _____
3. Severe _____ 4. Disastrous _____

* This rating may change as land use changes (future development)

6. Outlet Control: Automatic _____ Manual
Operative _____ yes; No.

Comments:

7. Upstream Face of Dam: Condition:

1. Good _____ 2. Minor Repairs _____
3. Major Repairs _____ 4. Urgent Repairs _____

Comments:

8. Downstream Face of Dams:

Condition: 1. Good ✓ 2. Minor Repairs _____
3. Major Repairs _____ 4. Urgent Repairs _____

Comments:

9. Emergency Spillway: NONE

Condition: 1. Good _____ 2. Minor Repairs _____
3. Major Repairs _____ 4. Urgent Repairs _____

Comments:

10. Water Level at time of inspection: 5 ft. above _____ below ✓
top of dam ✓ principal spillway _____
other _____

11. Summary of Deficiencies Noted:

Growth (Trees and Brush) on Embankment NO
Animal Burrows and Washouts NO
Damage to slopes or top of dam NO
Cracked or Damaged Masonry NO
Evidence of Seepage NO
Evidence of Piping NO
Erosion NO
Leaks NO
Trash and/or debris impeding flow NO
Clogged or blocked spillway NO
Other NO

12. Remarks & Recommendations: (Fully Explain)

THIS DAM IS IN VERY GOOD CONDITION AND WELL MAINTAINED BY CITY OF WORCESTER WATER DEPT.

This appears to be a pump house. What is it doing in our listing? Confirm!!!

13. Overall Conditions:

- 1. Safe _____
- 2. Minor repairs needed _____
- 3. Conditionally safe - major repairs needed _____
- 4. Unsafe _____
- 5. Reservoir impoundment no longer exists (explain)
Recommend removal from inspection list _____

BOSTON COPY

DESCRIPTION OF DAM

DISTRICT 3
Submitted by MICHAUD
MULCAHY + KANN Dam No. 3-14-134-4.1
Date MARCH 28, 1973 City/Town HOLDEN
Name of Dam DAM BELOW KENDALL RES.

1. Location: Topo Sheet No. 20C

Provide 8 1/2" x 11" in clear copy of topo map with location of Dam clearly indicated.

2. Year built: _____ Year/s of subsequent repairs _____

3. Purpose of Dam: Water Supply Recreational _____

Irrigation _____ Other _____

4. Drainage Area: 2.5 sq. mi. _____ acres

5. Normal Ponding Area: 175± acres; Ave. depth _____

Impoundment: _____ gals.; _____ acre ft.

6. No. and type of dwellings located adjacent to pond or reservoir

GATE HOUSE i.e. summer homes, etc. _____

7. Dimensions of Dam: Length 180'± Max. Height 9'

Slopes: Upstream Face 2:1

Downstream Face 1:1

Width across top 28'

8. Classification of Dam by Materials:

Earth Conc. Masonry Stone Masonry _____

Timber _____ Rockfill Other _____

9. A. Description of present land usage downstream of dam:

80 % rural; 20 % urban.

B. Is there a storage area or flood plain downstream of dam which could accommodate the impoundment in the event of a complete dam failure? yes no _____

DAM NO. 3-14-134-4.1

10. Risk to life and property in event of complete failure.

No. of people NONE.

No. of homes NONE.

No. of Businesses NONE.

No. of industries NONE. Type _____

No. of utilities NONE. Type _____

Railroads NONE.

Other dams 3-14-134-3.1, 03, 02, 01

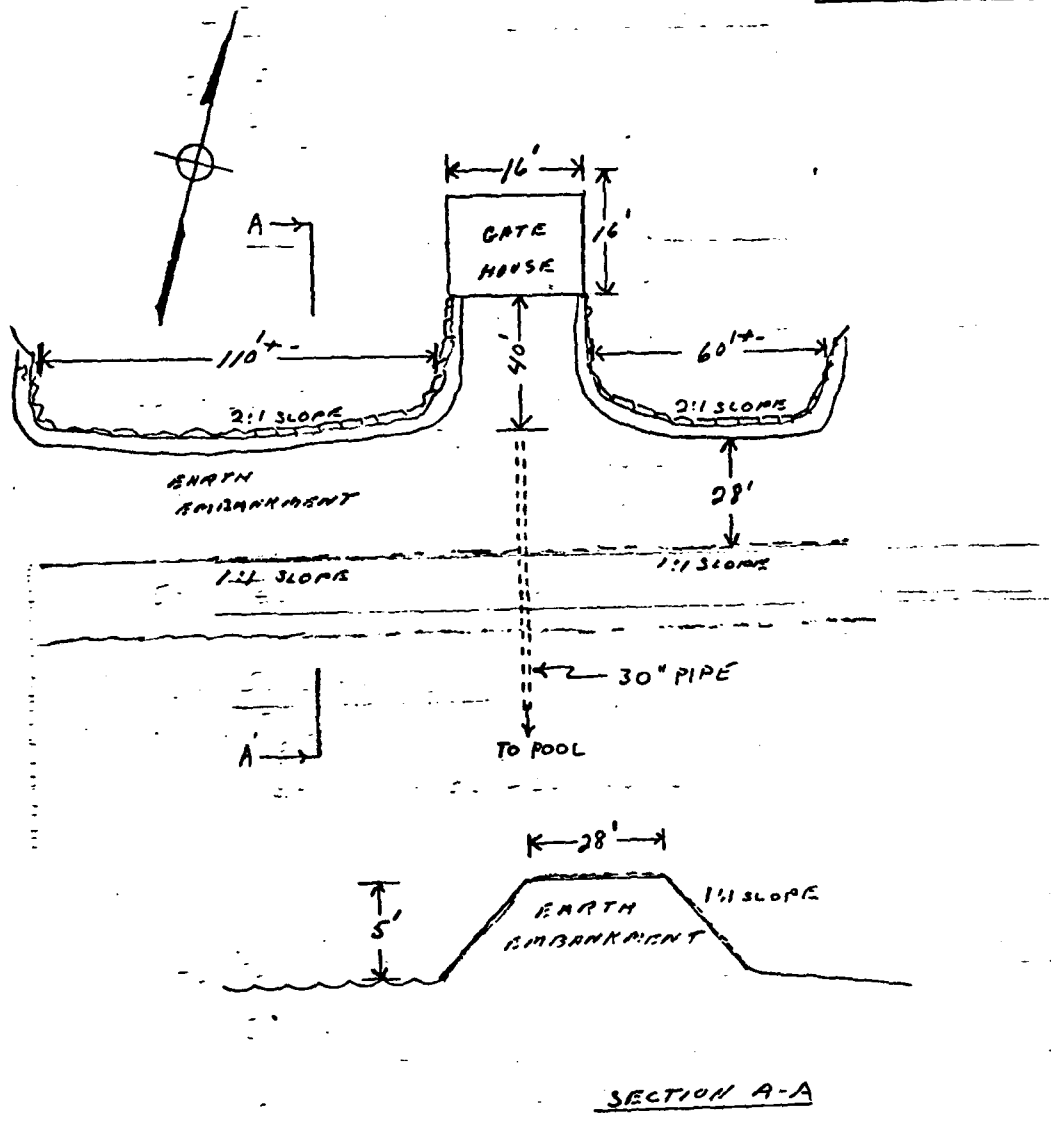
Other NONE.

11. Attach Sketch of dam to this form showing section and plan.
on 8½" x 11" sheet.

12. HOW TO LOCATE

FROM 1924 TAKE RTE 31 W'LY TAKE LT. ON
PAVED RD. JUST BEFORE RESERVOIR TO DAM.

HOLDEN
3-14-134-04.1
DAM BELOW KENDALL RES.
3-28-73



APPENDIX C
PHOTOGRAPHS

KENDALL RESERVOIR DAM



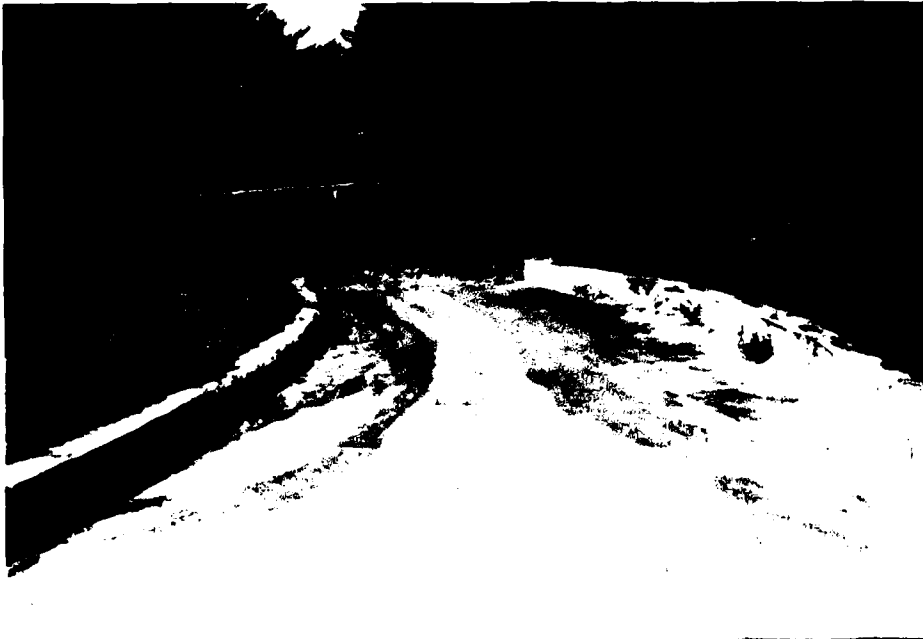
NO. 1 UPSTREAM SLOPE OF DAM



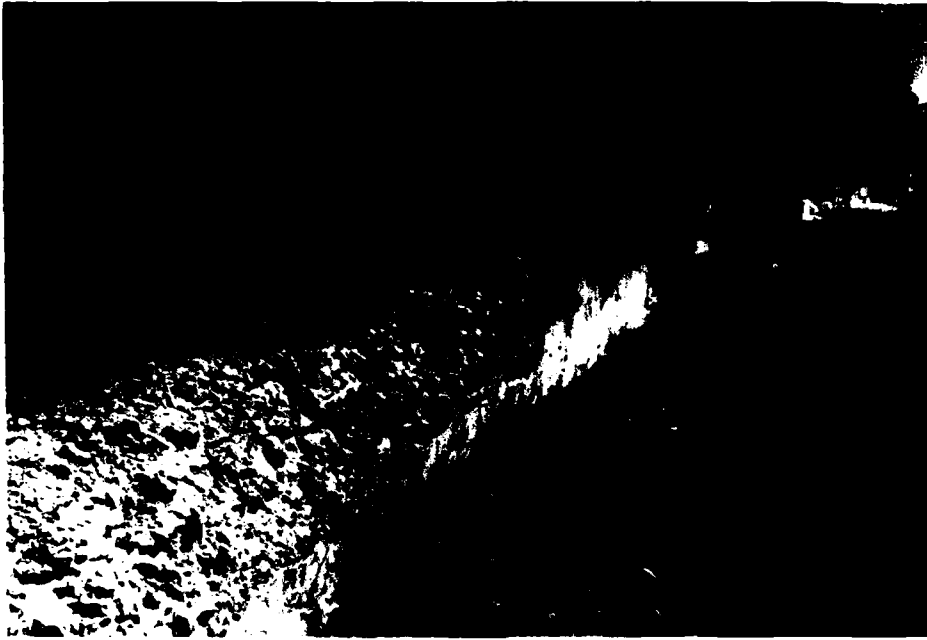
NO. 2 DOWNSTREAM SLOPE OF DAM



NO. 3 UPSTREAM VIEW OF SPILLWAY



NO. 4 DOWNSTREAM SPILLWAY CHANNEL



**NO. 5 DETAIL OF DETERIORATION AND SPALLING OF
WALL OF SPILLWAY CHANNEL**



**NO. 6 OUTLET FOR DIVERSION CANAL FROM
PINE HILL RESERVOIR**



NO. 7 DIKE AND GATE HOUSE AT SOUTH END OF RESERVOIR



NO. 8 DISTRIBUTION POOL DOWNSTREAM OF DIKE

APPENDIX D
HYDROLOGIC AND HYDRAULIC
COMPUTATIONS

KENDALL RESERVOIR DAM

I Test Flood, 100 year storm & Storage Functions

1- Total Drainage Area - 1.89 mi²

2- Pond(s) Area: 0.267 mi²
 Swamp(s) Area: 0.000
Total Area Ponds & Swamps: 0.267 mi²

% Ponds & Swamps = $\frac{0.267}{1.89} = 14.1\%$

3- East side - 6.1% Slope } Say Ave Slope = 6.6%
 West side - 7.2% Slope }

4- Using C. of E. Curves for Peak Flow Rates & above guide values the Peak Flow Rate was estimated to be somewhat lower than "Rolling", and taken at 2000 c.f.s./mi². The dam size is "intermediate"; hazard potential is "high". Use full PMF as rest flood.

5- Test Flood Inflow = (2000)1.89 = 3780 c.f.s.

6- Pond Storage

The pond area is 0.267 sq. mi. at elev. 813. Based on a const. area, storage increases at 171 ac. feet per foot of depth increase. A report by M&E, Inc. (J 2188), lists the reservoir storage as 2430 acre feet - presumably below the spillway crest. Storage above the crest is 1197 ac. ft. at pond el. 820

7- Storage Functions are based on $Q_{out} = Q_{in} [1 - \frac{S_{out}}{R}]$

S_{out} = Storage Vol. in Reservoir related to final Q_{out} in terms of inches of rain over the drainage area.

$S(\text{in Inches}) = 12 D \left(\frac{.267}{1.89} \right) = 1.7 D$ $D, R = \text{6hr rain of } 5'' \text{ or more}$

D = Storage Depth (above spillway) on reservoir, in feet

8- Storage Functions: ($F_T = F_{100}$); $D=0$ @ Res. El. 813.

$F_{TF} = 3780 - 199 S = 3780 - 338 D$

METCALF & EDDY, ENGINEERS

② Discharge Rating

A- Spillway - [Ref. V.T. Chow - "Open Chan. Hydr." - pp 360-362]

Let $Q_s \approx 3.12 L H^{1.5} = 109.2 H^{1.5}$ w/ $L = 35'$ width
 Spillway is ungated & has no flashboards. El. = 813

H	1	2	3	4	5	6	7	feet.
Pond El.	814	815	816	817	818	819	820	
Q_s	109	309	567	874	1221	1605	2022	cf.

B- Low Level Outlet

[Ref.: Williams & Hazen - "Hydr. Tables" - pp 31

Located at southerly end of Reservoir - with discharge toward Holden Reservoir No. 2.



Due to Gate:
 $2 \text{ Ent.} + 2 \text{ Exit Losses} = 3 \frac{V^2}{2g} = 3 h_v$
 $H = 1.2 \left(\frac{h_v}{1000} \right) + 3 h_v$
 Use $C = 110$

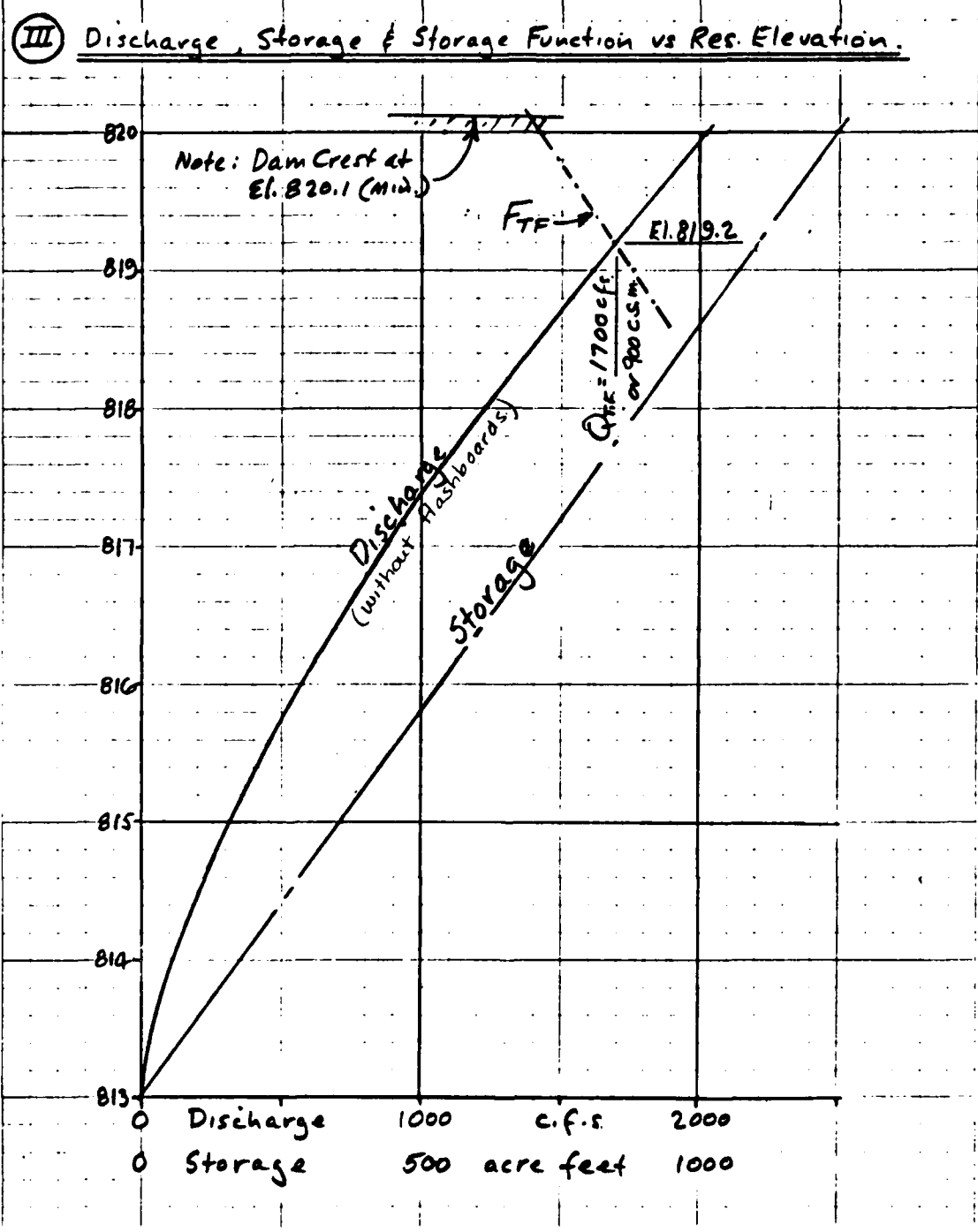
Q_0	$h_v/1000$	h_v	H	Pond El.
27.85	4.28	0.5	6.6	801.6
40.23	8.4	1.04	13.2	808.2
46.42	11.0	1.39	17.4	812.4
54.1	14.7	1.89	23.3	818.3

At nominal pond elev., $Q_0 = 47 \text{ cfs} \pm$

Time to lower reservoir $t' = \frac{(711) (83500)}{47 (3600)} = 44 \text{ hours}^*$

* This outlet discharges to Holden Res. No 1 - If lowering was due to approaching storm, it would probably be undesirable to outlet this way.

METCALF & EDDY, ENGINEERS



METCALF & EDDY, ENGINEERS

Project Nat. Program of Non-Fed Dams Acct No 5864 Page 4 of 4
 Subject Worcester Mass. Riva Compld By LEB Date 10/11/78
 Detail KENDALL RESERVOIR Ch'd. By MLL Date 11/6/78

IV Failure of Dam

Peak Failure Flow: No Overtopping - Test Flood Outflow = 1700 cfs

Pond Elevation - 819.2

Toe Elevation - 785

$$Y_0 = 34.2'$$

Dam Length Subject to Breaching = 332'

$$W_0 = 40\% (332') = 132.8$$

$$Q_p = 1.68 W_0 (Y_0)^{1.5} = 1.68 (132.8) (34.2)^{1.5} = 44,600 \text{ c.f.s.}$$

Storage Volume Released:

Storage Above Spillway $6.2 (171) = 1060$

Storage Below Spillway (See I-6) 2430

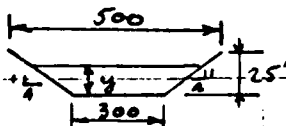
$S = \text{Total Storage} = 3490 - \text{Say } 3,500 \text{ Ac. Ft.}$

Channel Hydraulics:

$$S = \frac{5}{800} = .00625 ; n = .06$$

$$V = \frac{1.49}{.06} R^{2/3} = 1.96 R^{2/3}$$

$$A = y(300 + 4y); P = 300 + 8.25y$$



y	A	P	V	Q
2	616	316.5	3.05	1880
4	1264	333	4.77	6030
6	1944	349.5	6.15	12000
8	2656	366	7.35	19500
10	3400	382.5	8.41	28600
12	4176	399	9.39	39200
14	4984	415.5	10.3	51300

The initial wave would be about 13 feet high at an average velocity about 10 fps.

No appreciable storage reduction could occur before the initial wave reaches Eagle Lake.

1500' Distr. in Eagle Lake, Stump Pt. & swamp with a total area of 0.15 mi² ±
 Drainage of Kendall could raise the distr. ponds by 36' ±, if confined

Time to Drain:

$$\frac{43560 (3500)}{3600 (\frac{1}{2}) (44600)} = 1.9 \text{ Hours, or } 114 \text{ minutes}$$

APPENDIX E

INFORMATION AS CONTAINED IN
THE NATIONAL INVENTORY OF DAMS

KENDALL RESERVOIR DAM

END

FILMED

7-85

DTIC