

AD-A154 817

CIVILIAN MANPOWER STATISTICS, SECOND QUARTER, FY-85.
WASHINGTON HEADQUARTERS SERVICE (DOD) DIR FOR INFO
OP & RPTS. MAR 85. DIOR/MO4-85/02

V/E

UN CLASSIFIED

F/G 5/9

N/L

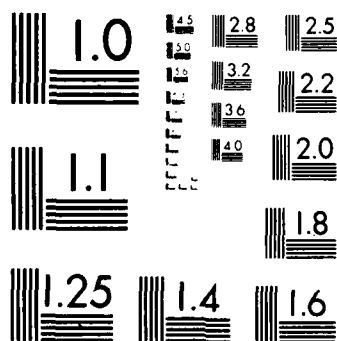
1 OF 1

AD-A154 817

END
FILMED
11 04 85

1 OF 1

AD-A154 817



MICROCOPY RESOLUTION TEST CHART
NATIONAL BUREAU OF STANDARDS 1963-A

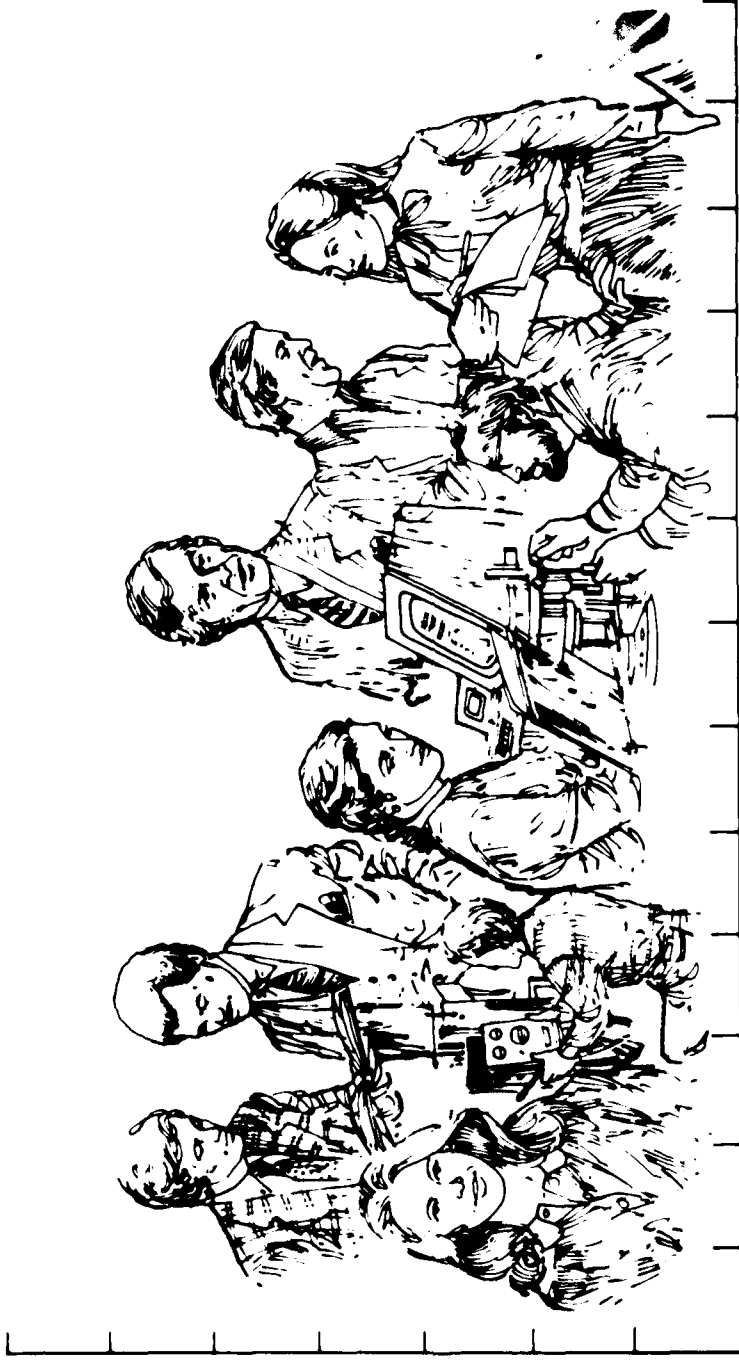
THIS REPORT IS UNCLASSIFIED AND
ITS DISTRIBUTION IS UNLIMITED

M04

Department of Defense

CIVILIAN MANPOWER STATISTICS

MARCH 1985



Department of Defense Civilian Manpower Statistics

**Issued Quarterly by
Directorate for Information
Operations and Reports (DIOR)**

For Sale by the Superintendent of Documents
U. S. Government Printing Office
Washington, D.C. 20402

FOREWORD

Civilian Manpower Statistics (CMS) is a quarterly publication prepared by the Washington Headquarters Services, Directorate for Information Operations and Reports (WHS/DIOR) of the Office of the Secretary of Defense.

CMS provides statistical information on the civilian work force of the Department of Defense (DoD), with the exception of personnel of the National Security Agency, the Defense Intelligence Agency, and personnel paid from nonappropriated funds. It is produced primarily from a computerized data base developed and maintained by WHS/DIOR from monthly information provided to the Office of Personnel Management on SF-113A, Monthly Report of Federal Civilian Employment.

TABLE OF CONTENTS

TABLE	PAGE
1 DoD Civilian Employment, by Function and Employment Status, According to Defense Component: March 31, 1985	1
2 Trends in DoD Civilian Employment Subject to OMB Ceiling, by Function, Employment Status, and Defense Component	2
3 DoD Direct Hire Civilian Personnel Subject to OMB Ceilings, by Function and Defense Component	3
4 DoD Direct and Indirect Hire Civilian Personnel, by Component (Excluding the Military Departments), According to Type: March 31, 1985	4
5 DoD Direct Hire Civilian Personnel, by Type, According to Defense Component: March 31, 1985	5
6 DoD Civilian Personnel, by Location and Type, According to Defense Component: March 31, 1985	6
7 DoD Indirect Hire Civilian Personnel, by Country, According to Defense Component: March 31, 1985	7
GLOSSARY	8

DoD Civilian Employment by Function and Employment Status.
According to Defense Joint March 31, 1985

FUNCTION/EMPLOYMENT STATUS	TOTAL DoD	ARMY	NAVY b/	AIR FORCE	OTHER DoD ORGANIZATIONS c/
MILITARY FUNCTIONS					
OMB Ceiling Employment	1,116,559	417,182	351,841	261,055	86,481
Direct Hire	1,030,824	356,933	341,356	247,780	84,767
Indirect Hire	85,723	60,249	10,485	13,275	1,714
Total Employment	1,128,105	420,097	356,503	263,009	88,496
Direct Hire	1,042,382	359,848	346,018	249,734	86,782
Indirect Hire	85,723	60,249	10,485	13,275	1,714
CIVIL FUNCTIONS (NOT DIRECT HIRE)					
OMB Ceiling Employment	28,187	28,183	0	4	0
Total Employment	29,431	29,427	0	4	0
TOTAL MILITARY AND CIVIL FUNCTIONS					
OMB Ceiling Employment	1,144,746	445,365	351,841	261,059	86,481
Direct Hire	1,059,023	385,116	341,356	247,784	84,767
Indirect Hire	85,723	60,249	10,485	13,275	1,714
Total Employment	1,157,536	449,524	356,503	263,013	88,496
Direct Hire	1,071,813	389,275	346,018	249,738	86,782
Indirect Hire	85,723	60,249	10,485	13,275	1,714

a/ Included in Total Employment but excluded from Office of Management and Budget (OMB) Ceiling Employment are employees exempt from OMB ceiling control. Refer to Office of Personnel Management Federal Personnel Manual System Supplement 298-2, Subchapter 53, for a delineation of employment exempt from ceiling control.

b/ Includes Marine Corps civilian personnel

c/ See the Glossary for a list of Other DoD Organizations.

TABLE 2

Trends in DoD Civilian Employment Subject to OMB Ceiling,
By Function, Employment Status, and Defense Component

FUNCTION/COMPONENT EMPLOYMENT STATUS	END STRENGTHS, LAST 4 FISCAL YEARS				LAST 3 MONTHS		
	30 SEP 81	30 SEP 82	30 SEP 83	30 SEP 84	31 JAN 85	28 FEB 85	31 MAR 85
MILITARY FUNCTIONS	1,019,466	1,029,854	1,067,824	1,089,585	1,110,327	1,116,067	1,116,559
DIRECT HIRE a/	939,942	947,061	983,644	1,004,488	1,025,164	1,029,184	1,030,836
INDIRECT HIRE b/	79,524	82,793	84,180	85,097	85,163	86,883	85,723
ARMY	372,111	379,316	392,346	405,084	414,161	417,108	417,182
DIRECT HIRE	318,278	322,057	333,722	345,194	354,141	355,630	356,933
INDIRECT HIRE	53,833	57,259	58,624	59,890	60,020	61,478	60,249
NAVY	320,858	319,554	339,552	342,851	350,926	351,953	351,841
DIRECT HIRE	310,123	308,885	328,907	332,468	340,693	341,465	341,356
INDIRECT HIRE	10,735	10,669	10,645	10,383	10,233	10,488	10,485
AIR FORCE	246,165	248,508	252,330	253,884	259,129	260,404	261,055
DIRECT HIRE	232,933	235,456	239,367	240,903	245,945	247,200	247,780
INDIRECT HIRE	13,232	13,052	12,963	12,981	13,184	13,204	13,275
OTHER DoD ORGANIZATIONS c/	80,332	82,476	83,596	87,766	86,111	86,602	86,481
DIRECT HIRE	78,608	80,663	81,648	85,923	84,385	84,889	84,767
INDIRECT HIRE	1,724	1,813	1,948	1,843	1,726	1,713	1,714
CIVIL FUNCTIONS a/	31,800	31,573	32,823	28,974	28,373	27,869	28,187
(ALL DIRECT HIRE)	31,796	31,569	32,819	28,972	28,370	27,865	28,183
Army	4	4	4	2	3	4	4
Air Force							
TOTAL MILITARY AND CIVIL FUNCTIONS	1,051,266	1,061,427	1,100,647	1,118,559	1,138,700	1,143,936	1,144,746
DIRECT HIRE a/	971,742	978,634	1,016,467	1,033,462	1,053,537	1,057,053	1,059,023
INDIRECT HIRE b/	79,524	82,793	84,180	85,097	85,163	86,883	85,723

a/ As reported officially to the Office of Personnel Management

b/ Foreign Nationals supporting U.S. Military Forces overseas under contracts or agreements with foreign governments

c/ See Glossary for a list of Other DoD Organizations

TABLE 3

DoD Direct Hire Civilian Personnel Subject to OMB Ceiling,
by Function and Defense Component

FUNCTION/COMPONENT	TOTAL EMPLOYMENT				PROGRAMMED STRENGTH 30 SEP 84	FULL-TIME WITH PERMANENT APPOINTMENTS		
	31 JAN 85	28 FEB 85	31 MAR 85	31 JAN 85		28 FEB 85	31 MAR 85	
MILITARY FUNCTIONS	1,025,164	1,029,184	1,030,836	968,120	902,767	905,612	906,823	
Army	354,141	355,630	356,933	331,644	301,666	302,753	303,501	
Navy	340,693	341,465	341,356	319,907	301,159	301,858	302,129	
Air Force	245,945	247,200	247,788	232,823	222,922	223,705	224,163	
OSD & Organizations Serviced by OSD ^{a/}	3,724	3,705	3,726	2,707	3,476	3,496	3,515	
Defense Audiovisual Agency	258	255	244	502	239	235	235	
Defense Communications Agency	1,808	1,809	1,842	1,751	1,713	1,710	1,739	
Defense Contract Audit Agency	4,128	4,117	4,132	3,742	4,068	4,054	4,066	
Defense Investigative Service	3,289	3,359	3,434	3,455	3,246	3,286	3,319	
Defense Logistics Agency	48,789	49,113	49,369	48,192	46,442	46,736	47,027	
Defense Mapping Agency	8,887	8,896	8,955	8,650	8,663	8,669	8,718	
Defense Nuclear Agency	692	692	697	670	628	631	636	
Department of Defense	12,002	12,129	12,368	10,481	7,868	7,828	7,775	
Dependents Schools	808	814	0	711	677	651	0	
Uniformed Services University of the Health Sciences								
CIVIL FUNCTIONS	28,373	27,869	28,187	N/A	26,175	25,842	26,045	
Army	28,370	27,865	28,183		26,172	25,838	26,041	
Air Force	3	4	4		3	4	4	
TOTAL MILITARY AND CIVIL FUNCTIONS	1,053,537	1,057,053	1,059,023	N/A	928,942	931,454	932,868	

a/ See the Glossary for a list of OSD and Organizations Serviced by OSD.

TABLE 4

DoD Direct and Indirect Hire Civilian Personnel by Component,
According to Type (Excluding the Military Departments)

31 MAR 85

DEFENSE COMPONENT	TOTAL	DIRECT HIRE CIVILIANS	INDIRECT HIRE CIVILIANS
TOTAL	88,496	86,782	1,714
OSD And Organizations Serviced by OSD a/	3,782	3,768	14
Defense Audiovisual Agency	256	256	0
Defense Communications Agency	1,912	1,902	10
Defense Contract Audit Agency	4,175	4,170	5
Defense Investigative Service	3,466	3,466	0
Defense Logistics Agency	51,168	50,271	897
Defense Mapping Agency	9,055	9,053	2
Defense Nuclear Agency	704	704	0
Department of Defense Dependents Schools	13,154	12,368	786
Uniformed Services University of the Health Sciences	824	824	0

a/ See the Glossary for a list of OSD and Organizations Serviced by OSD.

TABLE 5

DoD Direct Hire Civilian Personnel, by Type
According to Defense Component: March 31, 1985

TYPE OF PERSONNEL	TOTAL DoD	ARMY	NAVY	AIR FORCE	OTHER DoD ORGANIZATIONS a/
TOTAL	1,071,813	389,275	346,018	249,738	86,782
BY STATUS					
Full-Time	1,038,855	375,805	338,291	242,581	82,178
Part-Time	28,434	11,157	7,231	6,335	3,711
Intermittent	4,524	2,313	496	822	893
BY CAREER SERVICE CATEGORY					
Competitive	887,148	309,413	302,000	206,296	69,439
Excepted and SES	184,665	79,862	44,018	43,442	17,343
BY TYPE OF APPOINTMENT					
Permanent	945,614	334,741	305,083	227,187	78,603
Temporary/Indefinite	126,199	54,534	40,935	22,551	8,179
BY CITIZENSHIP					
U.S. Citizens	1,029,633	372,502	328,910	241,922	86,299
Non-Citizens	42,180	16,773	17,108	7,816	483
BY LABOR CATEGORY					
Salaries	713,773	274,124	204,326	159,515	75,808
Wage Board	358,040	115,151	141,692	90,223	10,974

a/ See the Glossary for a list of Other DoD Organizations.

TABLE 6

DoD Direct Hire Civilian Personnel, by Location/Type,
According to Defense Component March 31, 1985 a/

LOCATION/TYPE OF PERSONNEL	TOTAL DoD	ARMY	NAVY	AIR FORCE	OTHER DoD ORGANIZATIONS b/
WORLDWIDE TOTAL	1,071,813	389,275	346,018	249,738	86,782
UNITED STATES	972,092	343,522	320,518	234,326	73,726
By Location					
Washington, D.C.	86,178	28,692	37,763	6,367	13,356
Remainder of U.S.	885,914	314,830	282,755	227,959	60,370
By Labor Category					
Salaried	651,083	249,575	193,186	145,372	62,950
Wage Board	321,009	93,947	127,332	88,954	10,776
By Citizenship					
U.S. Citizens	971,396	343,131	320,297	234,295	73,673
Non-Citizens	696	391	221	31	53
U.S. TERRITORIES	7,246	1,138	5,091	941	76
By Labor Category					
Salaried	3,527	761	2,290	415	61
Wage Board	3,719	377	2,801	526	15
By Citizenship					
U.S. Citizens	7,173	1,137	5,039	941	56
Non-Citizens	73	1	52	0	20
FOREIGN COUNTRIES	92,475	44,615	20,409	14,471	12,980
By Labor Category					
Salaried	59,163	23,788	8,850	13,728	12,797
Wage Board	33,312	20,827	11,559	743	183
By Citizenship					
U.S. Citizens	51,064	28,234	3,574	6,686	12,570
Non-Citizens	41,411	16,381	16,835	7,785	410

a/ Includes personnel not subject to Office of Management and Budget (OMB) ceiling control.

b/ See the Glossary for a list of the Other DoD Organizations.

c/ The Washington, D.C. Standard Metropolitan Statistical Area (SMSA) consists of the District of Columbia; Montgomery, Prince Georges, Charles, Calvert, and Frederick counties in Maryland; Alexandria, Fairfax, Falls Church, Manassas and Manassas Park cities, and Arlington, Fairfax, Loudoun, Stafford, and Prince William counties in Virginia.

TABLE 7

DoD Indirect Hire Civilian Personnel, by Country,
According to Defense Component: March 31, 1985

COUNTRY	TOTAL DoD	ARMY	NAVY	AIR FORCE	OTHER DoD ORGANIZATIONS a/
TOTAL	85,722	60,249	10,485	13,275	1,713
BELGIUM	638	591	0	47	0
COLOMBIA	1	0	0	0	1
GERMANY	60,042	52,597	0	6,042	1,403
GREECE	575	19	128	410	18
GUAM	0	0	0	0	0
ITALY	62	0	62	0	0
JAPAN	17,320	3,413	9,159	4,567	181
KOREA	3,315	3,315	0	0	0
NETHERLANDS	389	314	0	75	0
PHILIPPINES	6	0	6	0	0
SPAIN	2,036	0	1,122	827	87
UNITED KINGDOM	1,338	0	8	1,307	23

a/ See the Glossary for a list of Other DoD Organizations.

GLOSSARY

CIVILIAN FUNCTIONS. Functions primarily associated with the civil works program of the Army Corps of Engineers. This program encompasses planning, programming, designing, constructing, and operating Federal water resource projects for navigation, flood control, hydroelectric power, water supply, recreation, and related activities. Civil functions also includes cemeterial workers (Army) and several conservation management employees (Air Force).

COMPETITIVE SERVICE. All civil service positions in the Executive Branch, except:

1. Positions which are specifically exempted from the competitive service by or under statute;
2. Positions which appointments are made by nomination for confirmation by the Senate, unless the Senate otherwise directs or when specifically included in the competitive service by statute;
3. Positions in the Senior Executive Service.

Also includes civil service positions not in the Executive Branch which are specifically included in the competitive service by statute.

DIRECT HIRE CIVILIANS. Employees hired directly by an agency of the Department of Defense (DoD). Included are foreign nationals hired by DoD to support DoD activities in their home countries.

DoD. Department of Defense.

EXCEPTED SERVICE. All positions in the Executive Branch of the Federal government (except Senior Executive Service positions) which are specifically excepted from the competitive service by or pursuant to a statute, the President, or the Office of Personnel Management.

FULL-TIME EMPLOYEES. Employees who are regularly scheduled to work the number of hours and days in the administrative work week for their employment group or class (Usually 5 days of 8 hours each).

INLURET HIRE NATIONALS. Foreign nationals assigned to support U.S. forces through contracts or arrangements with foreign governments (or agencies thereof). These personnel are employees of the foreign governments involved.

INTERMITTENT EMPLOYEES. Employees who are employed with no prescheduled tour of duty (i.e., employed on an irregular or occasional basis).

MILITARY FUNCTIONS. Activities normally associated with the uniformed services.

OMB CEILING EMPLOYMENT. Employees subject to the Office of Management and Budget (OMB) ceilings established to administer Presidential employment ceiling limitations. Refer to the Office of Personnel Management Federal Personnel Manual System Supplement 208 2, Subchapter 53, for a delineation of employment exempt from ceiling control.

TYPE DOD ORGANIZATIONS

*Office of the Secretary of Defense (OSD)

*Joint Chiefs of Staff (JCS)

*Inspector General of the Department of Defense

Department of Defense Agencies:

*Defense Advanced Research Projects Agency (DARPA)

Defense Audiovisual Agency (DAVA)

Defense Communications Agency (DCA)

Defense Contract Audit Agency (DCAA)

Defense Investigative Service (DIS)

*ORGANIZATIONS SERVICED BY OSD

- *Defense Legal Services Agency (DLSA)
- Defense Logistics Agency (DLA)
- Defense Mapping Agency (DMA)
- Defense Nuclear Agency (DNA)
- *Defense Security Assistance Agency (DSAA)
- *Strategic Defense Initiative Organization

Department of Defense Field Activities:

- *Armed Forces Information Service (AFIS)
- *Department of Defense Dependents Schools (DODDS) (Headquarters Only)
- *Office of Civilian Health and Medical Program Office (OCHAMPUS)
- *Office of Economic Adjustment (OEA)
- *Tri-Service Medical Information System Program Office (TRIMIS)
- *Washington Headquarters Services (WHS)

*U. S. Court of Military Appeals

Uniformed Services University of the Health Sciences (USUHS)

PART-TIME EMPLOYEES. Employees who are regularly scheduled for a prearranged tour of duty which is less than the specified number of hours or days worked by full-time employees in the same employment group or class.

PERMANENT APPOINTMENTS. Permanent appointments are defined within each type of service as follows:

1. **COMPETITIVE SERVICE** - Employees serving under career appointments who are serving or who have completed their initial appointment probation or who are not required to serve an initial appointment probation. Also includes employees with career-conditional appointments.

*ORGANIZATIONS SERVICED BY OSD

2. EXCEPTED SERVICE - Employees whose appointments carry no restrictions or conditions, such as conditional appointments, indefinite or specific time limitations, or trial periods. Based on tenure, can include employees serving trial periods or those whose tenure is equivalent to career-conditional in the competitive service.

3 SENIOR EXECUTIVE SERVICE (SES) - All SES employees except those serving under "limited term" and "limited emergency" appointments

SALARIED EMPLOYEES. Primarily employees occupying positions subject to the Classification Act of 1949, as amended and a limited number of other employees whose compensation is established by other legislation, Executive Order, or administrative determination.

SENIOR EXECUTIVE SERVICE (SES). Positions in an agency which are grade 16, 17, or 18 of the General Schedule or Level IV or V of the Executive Schedule (unless exempted). Also includes equivalent positions which need not be filled by appointment by the President and confirmation by the Senate and which have not been specifically excluded from the SES.

TOTAL PAID CIVILIAN EMPLOYMENT. Total direct and indirect hire civilian employment. For direct hires, includes, with some exceptions, all direct hire employees who had not officially separated as of the report date and who either worked during the reporting period or were on paid leave.

WAGE SYSTEM EMPLOYEES. Employees whose basic rates of pay are fixed in accordance with locally prevailing rates or by wage boards or similar administrative authority. Includes prevailing rate employees. (Prevailing rate employees are those employed by an agency in a recognized trade or craft; other skilled mechanical craft; or an unskilled, semiskilled, or skilled manual labor occupation. Also includes any other person, including a foreman or supervisor, in a position where trade, craft, or labor experience and knowledge is a paramount requirement.)

ND