

AD-A157000

RIA

ADA157000

AD



US ARMY
MATERIEL
COMMAND

TECHNICAL REPORT BRL-TR-2655

TECHNICAL
LIBRARY

SAFE SEPARATION DISTANCES BETWEEN SAND
COVERED CORRUGATED STEEL PIPES
CONTAINING EXPLOSIVE CHARGES

Harry J. Reeves

May 1985

APPROVED FOR PUBLIC RELEASE; DISTRIBUTION UNLIMITED.

US ARMY BALLISTIC RESEARCH LABORATORY
ABERDEEN PROVING GROUND, MARYLAND

Destroy this report when it is no longer needed.
Do not return it to the originator.

Additional copies of this report may be obtained
from the National Technical Information Service,
U. S. Department of Commerce, Springfield, Virginia
22161.

The findings in this report are not to be construed as an official
Department of the Army position, unless so designated by other
authorized documents.

The use of trade names or manufacturers' names in this report
does not constitute indorsement of any commercial product.

UNCLASSIFIED

SECURITY CLASSIFICATION OF THIS PAGE (When Data Entered)

REPORT DOCUMENTATION PAGE		READ INSTRUCTIONS BEFORE COMPLETING FORM
1. REPORT NUMBER TECHNICAL REPORT BRL-TR-2655	2. GOVT ACCESSION NO.	3. RECIPIENT'S CATALOG NUMBER
4. TITLE (and Subtitle) Safe Separation Distances Between Sand Covered Corrugated Steel Pipes Containing Explosive Charges	5. TYPE OF REPORT & PERIOD COVERED	
	6. PERFORMING ORG. REPORT NUMBER	
7. AUTHOR(s) Harry J. Reeves	8. CONTRACT OR GRANT NUMBER(s)	
9. PERFORMING ORGANIZATION NAME AND ADDRESS US Army Ballistic Research Laboratory ATTN: AMXBR-VLD Aberdeen Proving Ground, MD 21005-5066	10. PROGRAM ELEMENT, PROJECT, TASK AREA & WORK UNIT NUMBERS	
11. CONTROLLING OFFICE NAME AND ADDRESS US Army Ballistic Research Laboratory ATTN: AMXBR-OD-ST Aberdeen Proving Ground, MD 21005-5066	12. REPORT DATE May 1985	
	13. NUMBER OF PAGES 28	
14. MONITORING AGENCY NAME & ADDRESS (if different from Controlling Office)	15. SECURITY CLASS. (of this report) UNCLASSIFIED	
	15a. DECLASSIFICATION/DOWNGRADING SCHEDULE	
16. DISTRIBUTION STATEMENT (of this Report) Approved for public release, distribution unlimited.		
17. DISTRIBUTION STATEMENT (of the abstract entered in Block 20, if different from Report)		
18. SUPPLEMENTARY NOTES		
19. KEY WORDS (Continue on reverse side if necessary and identify by block number) Blast Safe Separation Blast Damage Ammunition Storage Steel Pipes High Explosives		
20. ABSTRACT (Continue on reverse side if necessary and identify by block number) Storing ammunition in sand or earth covered pipes would permit tactical units, with limited real estate assets, to construct non-permanent storage sites, quickly and economically, to support maintenance operations requiring downloading and for the storage of selected basic load items. To provide safety design guidance for such a facility, the Ballistic Research Laboratory sponsored by the Department of Defense Explosive Safety Board, conducted a series of donor acceptor tests employing sand covered corrugated steel		

UNCLASSIFIED

SECURITY CLASSIFICATION OF THIS PAGE(When Data Entered)

pipes to determine the safe separation distance between pipes required to localize damage in the event that the ordnance items in one pipe detonate en masse. Steel pipes with diameters ranging from 0.5-2.0 ft. (15-61 cm), two diameters in length, containing explosive charges weighing up to 47.5 lbs (21.5 kg) were used to support this effort.

The results of a regression and discriminant analysis of the test results can be used to either design a new facility or evaluate the safety of an existing facility.

Limited test data are also available on the influence of venting, explosive charge position, top cover depth and the effectiveness of sand-air-sand barriers versus all sand barriers.

UNCLASSIFIED

SECURITY CLASSIFICATION OF THIS PAGE(When Data Entered)

TABLE OF CONTENTS

	<u>Page</u>
LIST OF ILLUSTRATIONS	5
I. INTRODUCTION	7
II. TEST PROCEDURES	7
III. RESULTS AND OBSERVATIONS	10
IV. DISCUSSION	20
V. CONCLUSIONS	21
ACKNOWLEDGEMENTS	23
DISTRIBUTION LIST	25

LIST OF ILLUSTRATIONS

<u>Figure</u>		<u>Page</u>
1	STANDARD TEST SETUP	8
2	STANDARD TEST SETUP	9
3	TEST SETUP: SAND-AIR-SAND BARRIERS TEST NO 13	11
4	TEST SETUP: SAND-AIR-SAND BARRIERS TEST NO 14	12
5	TEST SETUP: IMPROVED VENTING TEST NO 21	13
6	TEST SETUP: RESTRICTED VENTING TEST NOS 22 and 25	14
7	TEST RESULTS	17
8	TEST RESULTS	18
9	TEST RESULTS	19
10	OBSERVED AND PREDICTED SAFE SEPARATION DISTANCES VERSUS EXPLO- SIVE CHARGE WEIGHT	22

I. INTRODUCTION

A. Background

The use of separated earth covered pipes, for the non-standard storage of ammunition, has been proposed in the past. The acceptance of such a practice would permit tactical units, with limited real estate assets, to construct non-permanent storage sites, quickly and economically, to support maintenance operations requiring downloading and for the storage of selected basic load items. Unfortunately, the data base required to design such a facility, safely and economically, is inadequate.

To satisfy this data base requirement, in part, the Ballistic Research Laboratory (BRL) proposed to conduct a limited series of donor-acceptor tests employing sand covered corrugated steel pipes and bare explosive charges. The proposal was accepted and funded by the Department of Defense Explosive Safety Board (DDESB).

B. Objective

The primary test objectives were as follows:

1. Determine the minimum distance between sand covered corrugated steel pipes such that when an explosive charge positioned inside one pipe (donor) is detonated, the other pipes (acceptors) exhibit no significant visible sign of blast inducted damage.
2. Compare the relative effectiveness of sand versus sand-air-sand barrier between the donor and acceptor pipe.

II. TEST PROCEDURES

The standard donor-acceptor test setup used in this series of tests is shown in Figures 1 and 2. The explosive charge weight, separation distances between the donor and acceptor pipes, and pipe diameters were systematically varied to experimentally establish safe separation distances, as a function of charge weight and pipe diameter, for the standard test setup.

The setup employed standard commercial grade corrugated steel pipes, two diameters in length, with diameters ranging from 0.5-2.0 ft (15-61 cm) with a wall thickness of 0.0625-inches (1.6 mm). The pipes were separated, covered to a depth of approximately one diameter, and closed on one end with sand.

The explosive charges were positioned near the closed end of the donor pipes. Cast pentolite charges were used for charge weights up to 0.75 lbs (340 grams). Hand packed Composition C-4 charges, 2 through 25 lbs (0.9 through 11 kg) and cast Composition B charges, 47.5 lbs (21.5 kg), were used in the remaining tests.

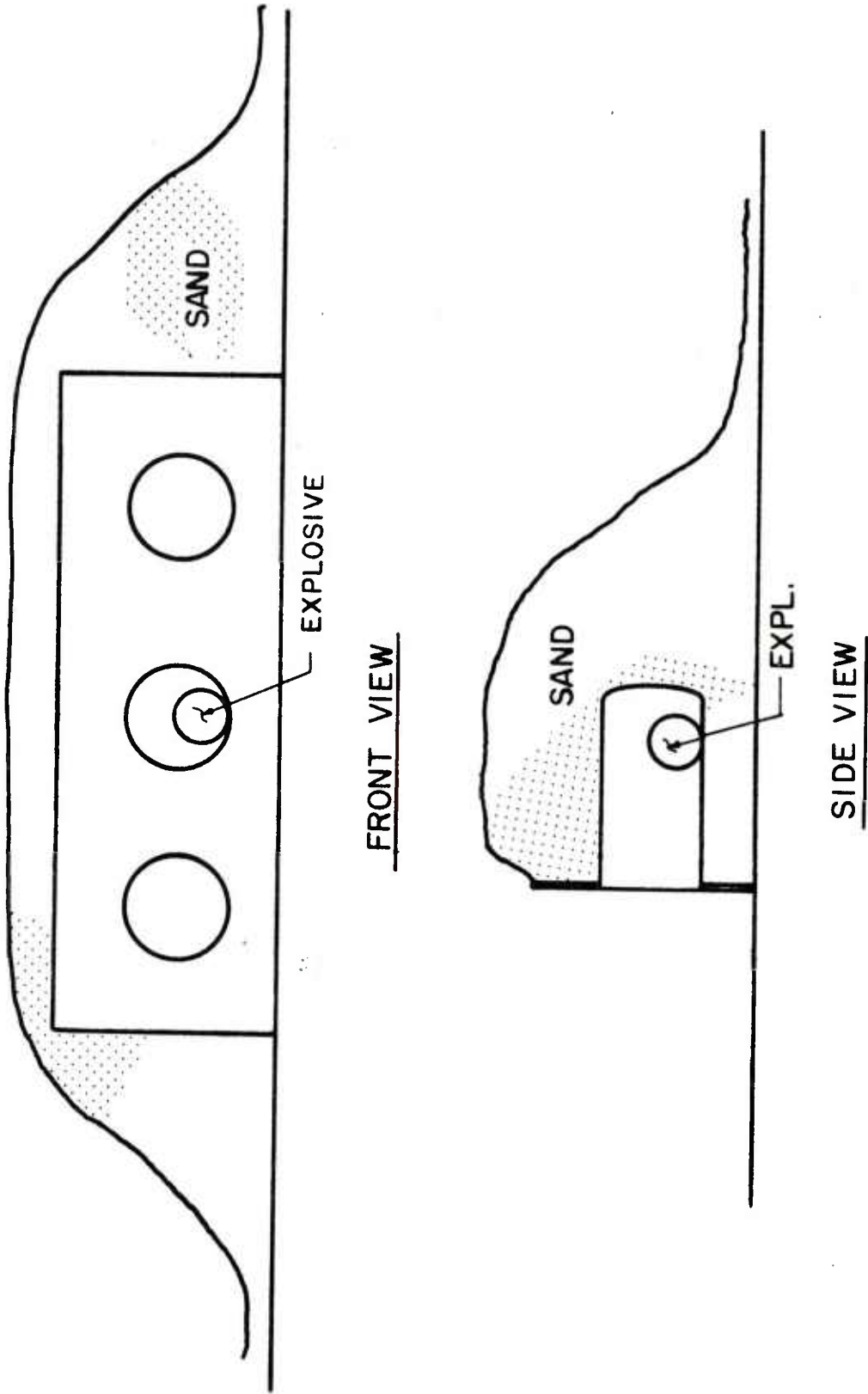


Figure 1. Standard Test Setup

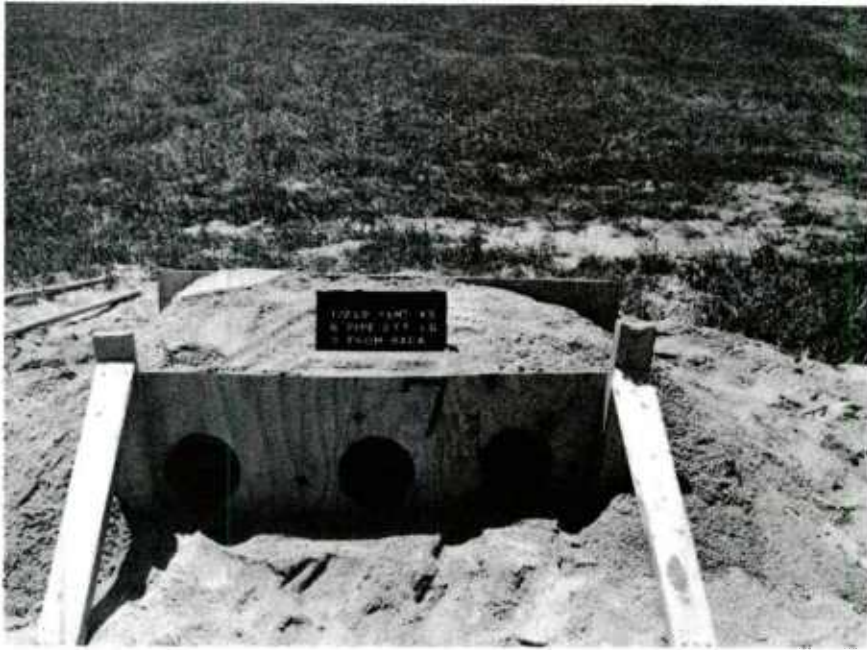


Figure 2. Standard Test Setup

A limited number of additional tests were conducted to investigate the effects of:

1. Positioning the explosive charge in the center of the donor pipe.
2. Increasing the pipe length from two to four diameters.
3. Separating the donor and acceptor pipes with sand-air-sand barriers. See Figures 3 and 4.
4. Separating the normally closed ends of the pipes from the sand barrier to increase venting. See Figure 5.
5. Increasing the depth of the sand cover on top of the pipes from one to four pipe diameters.
6. Positioning four sand filled 155 mm propelling charge cans between the explosive charge and the normally open end of a donor pipe. See Figure 6.

Test results were documented by recording any blast induced deformation at the front (open) and rear (normally closed) ends of the acceptor pipes. This assessment procedure permitted test results to be ranked quantitatively for a given pipe diameter.

III. RESULTS & OBSERVATIONS

Test results are presented in Table 1 and Figures 7, 8, and 9. Observations, based on the test results, are discussed in the following sections.

A. Explosive Charge Location

Moving the explosive charge from the center to the normally closed end of the donor pipe changed the location of damage on the acceptor pipes from the center to the normally closed ends, see Tests 7 and 8. As expected, damage to the normally closed ends of the acceptor pipes was greater than that observed at the open ends for all test configurations.

B. Pipe Length

Increasing the length of 0.5 ft (15 cm) pipes from two to four diameters, see Tests 2 and 7, had little or no effect on test results.

C. Sand-Air-Sand Barriers

The performance of the sand-air-sand barriers versus all sand barriers was disappointing. The damage suffered by the acceptors with sand-air-sand barriers was measurably greater than those observed in a similar test with all sand barriers. Compare Tests 12 and 14.

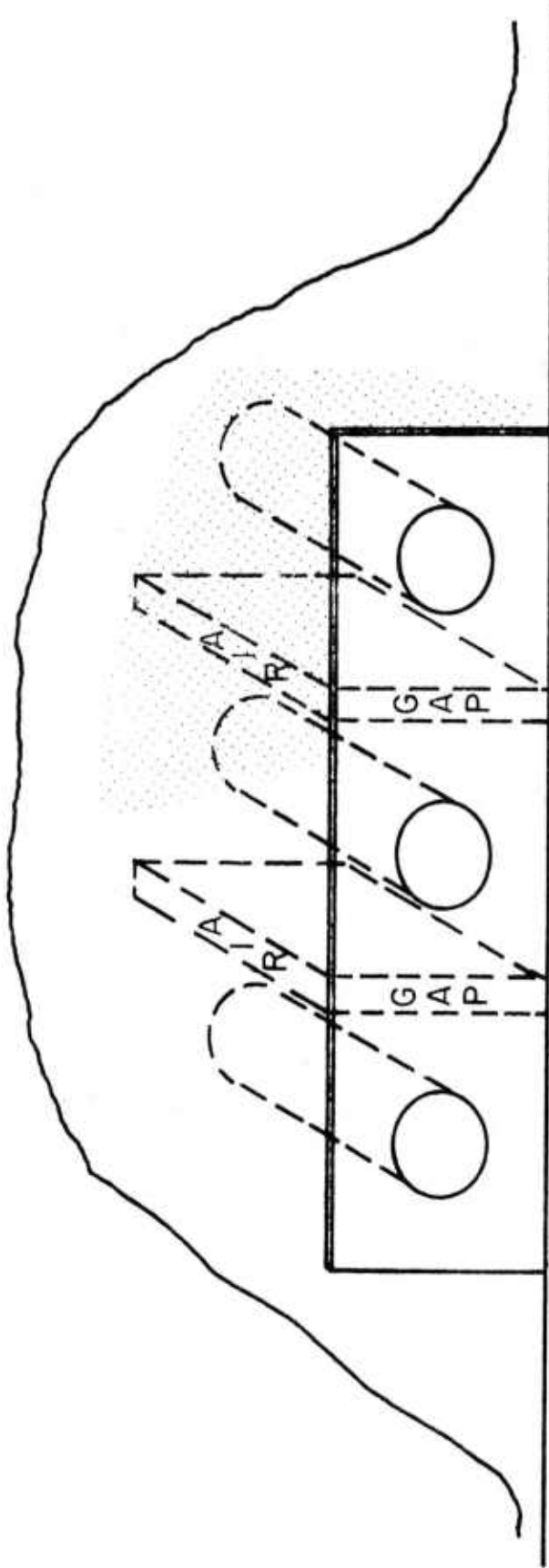


Figure 3. Test Setup: Sand-Air-Sand Barriers Test No. 13

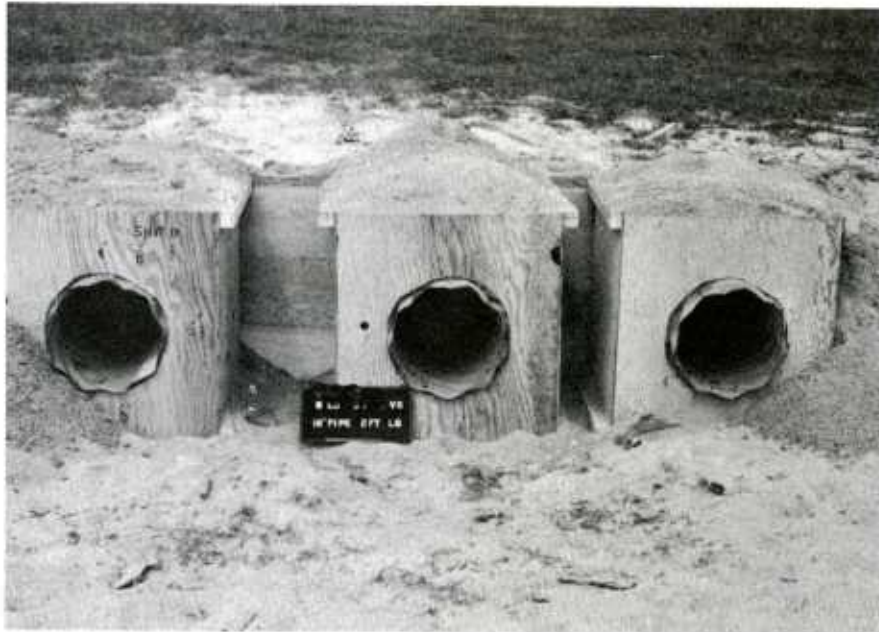


Figure 4. Sand-Air-Sand Barriers Test No. 14

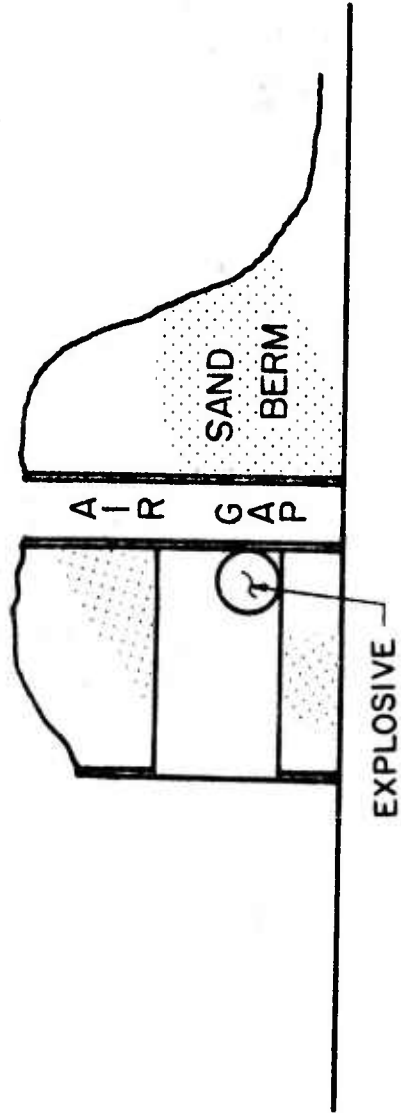


Figure 5. Test Setup - Improved Venting Test No. 21

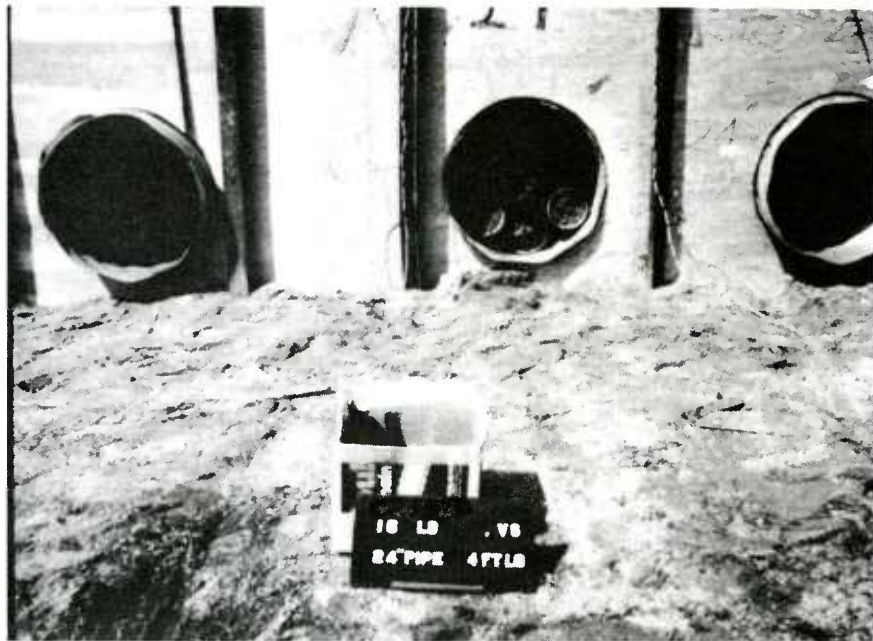


Figure 6. Test Setup - Restricted Venting Test Nos. 22 and 25

Table 1. Oonor-Acceptor Test Results for Corrugated Steel Pipe

TEST NO.	PIPE DIAMETER	PIPE LN	HE WEIGHT		ACCEPTOR A		ACCEPTOR B		REMARKS	
			LBS	(KG)	SPACING (DIA)	DEFORMATION	SPACING (DIA)	DEFORMATION		
1			0.25	(0.1134)	0.5	5.6 in (14 cm) 5.0 in (13 cm)	F ₁ R ₂	1.0	ND ³	See Footnote 4
2			0.50	(0.2268)	1.0	5.8 in (15 cm) 5.5 in (14 cm)	F R	1.5	NO	
3			0.75	(0.3402)	1.5	5.8 in (15 cm) 5.0 in (13 cm)	F R	2.0	ND	
4	0.5 ft (15.24 cm)	1.0 ft (30.48 cm)	4.0	(1.8144)	4.0	ND		5.0	NO	
5			8.0	(3.6288)	4.0	2.5 in (6 cm)	F	5.0	5.5 in (14 cm) 5.5 in (14 cm)	
6			8.0	(3.6288)	4.0	0 in (0 cm) 0 in (0 cm)	F R	5.0	1.5 in (4 cm) 0.8 in (2 cm)	Overhead sand cover depth increased from one to four diameters.
7		2.0 ft (61 cm)	0.5	(0.2268)	1.0	See Remarks		1.5	NO	Slight crushing observed in center of Acceptor A.
8			0.5	(0.2268)	1.0	NO 4.0 in (10 cm)	F R	1.5	NO	
9			4.0	(1.8144)	0.5	6.5 in (17 cm) 1.0 in (3 cm)	F R	1.0	10.2 in (26 cm) 5.0 in (13 cm)	
10			2.0	(0.9072)	0.5	11.4 in (29 cm) 5.5 in (14 cm)	F R	1.0	ND	
11	1.0 ft (30.5 cm)	2.0 ft (61 cm)	4.0	(1.8144)	1.0	8.8 in (22 cm) 2.2 in (6 cm)	F R	1.5	NO	
12			8.0	(3.6288)	1.5	7.5 in (19 cm) 3.2 in (8 cm)	F R	2.0	11.5 in (29 cm) 10.0 in (25 cm)	
13			12.0	(5.4432)	1.0 Sand- -0.5 Air	4.5 in (11 cm) 1.0 in (3 cm)	F R	1.5 Sand- -0.5 Air	3.5 in (9 cm) 2.6 in (7 cm)	

Table 1. Donor-Acceptor Test Results for Corrugated Steel Pipe (Continued)

TEST NO.	PIPE DIAMETER	PIPE LN	HE WEIGHT		ACCEPTOR A		ACCEPTOR B		REMARKS
			LBS	(KG)	SPACING	DEFORMATION	SPACING	DEFORMATION	
14	1.0 ft (30.5 cm)	2.0 ft (61 cm)	8.0	(3.6288)	1.0 Sand- -0.5 Air	5.5 in (14 cm) F 1.0 in (3 cm) R	1.0 Sand- -1.0 Air	6.0 in (15 cm) F 3.0 in (8 cm) R	
15			6.0	(2.7202)	1.0	6.8 in (17 cm) F 1.5 in (4 cm) R	1.5	9.8 in (25 cm) F 6.4 in (16 cm) R	
16			6.75	(3.0618)	0.5	16.5 in (42 cm) F 7.2 in (18 cm) R	1.0	ND	
17	1.5 ft (45.7 cm)	3.0 ft (91.4 cm)	13.5	(6.1236)	1.0	ND 11.0 in (28 cm) F	1.5	16.0 in (41 cm) F 14.0 in (36 cm) R	
18			13.5	(6.1236)	2.0	ND	2.5	ND	
19			16.0	(7.2576)	0.5	22.5 in (57 cm) F 2.0 in (5 cm) R	1.0	22.8 in (58 cm) F 17.5 in (44 cm) R	
20			25.0	(11.34)	1.5	21.0 in (53 cm) F 6.0 in (15 cm) R	2.0	ND	
21	2.0 ft (61 cm)	4.0 ft (122 cm)	16.0	(7.2576)	0.5	23.0 in (58 cm) F 6.0 in (15 cm) R	1.0	ND	Six inch (15 cm) air gap between normally closed end of pipe and sand berm.
22			16.0	(7.2576)	1.0	21.8 in (55 cm) F 3.0 in (7.6 cm) R	1.5	ND	Donor contained four 155 mm propellant charge cans.
23			47.5	(21.546)	3.0	ND	4.0	ND	
24			47.5	(21.546)	2.0	22.0 in (56 cm) F 18.7 in (47 cm) R	2.5	ND 19.0 in (48 cm) R	
25			25.0	(11.34)	2.0	ND 22.8 in (58 cm) R	2.5	ND	Donor contained four 155 mm propellant charge cans.

1. Shortest distance between the sidewalls at the front or open end of the damaged pipe.
2. Shortest distance between the sidewalls at the rear or closed end of the damaged pipe.
3. No Damage.
4. The HE charge was positioned in the center of the donor pipe in Tests 1, 2, 3, and 7. The HE charge was positioned in the rear or closed end of the donor pipe in the remaining tests.



Test No. 10

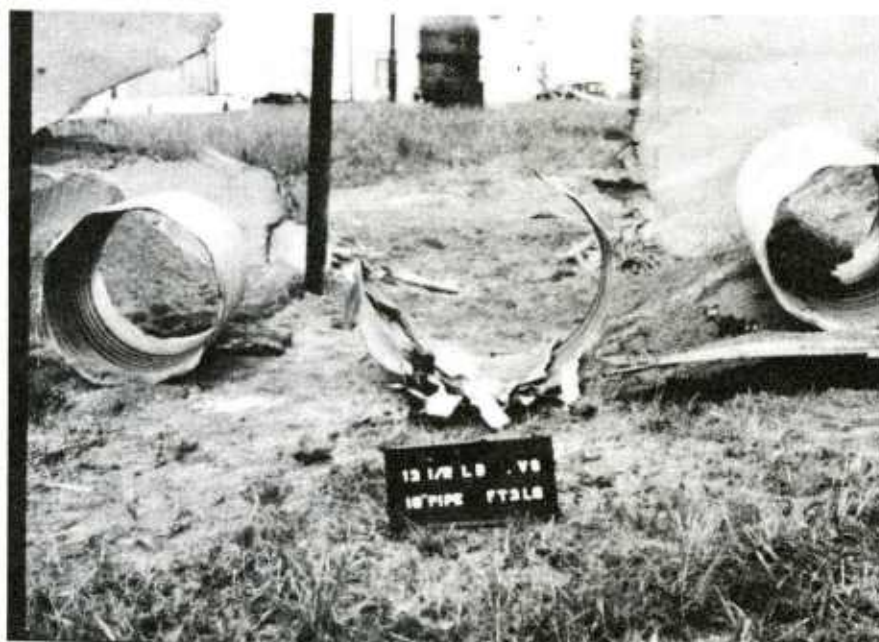


Test No. 11

Figure 7. Test Results



Test No. 17



Test No. 18

Figure 8. Test Results

D. Improved Venting

Providing an opening at the normally closed ends of the pipes to improve venting, see Figure 5, reduced the safe separation distance requirement by approximately one half pipe diameter. Compare Tests 19 and 21.

E. Restricted Venting

Positioning four sand-filled 155 cm propelling charge cans between the explosive charge and the normally open end of the donor pipe, to restrict venting, increased the safe separation distance by approximately one quarter of a pipe diameter. Compare Tests 19 and 22 and Tests 20 and 25.

F. Increased Top Cover

Increasing the overhead sand cover depth from one to four pipe diameters increased the safe separation distance requirement by an estimated one pipe diameter. Compare Tests 5 and 6.

IV. DISCUSSION

In general, the test results offered few surprises and with the exception of the performance of the sand-air-sand barriers, data trends could have been predicted a priori in qualitative terms.

The relatively poor performance of the sand-air-sand barriers was unexpected. Unfortunately, the point at which the performance of sand-air-sand barriers equal or exceed those of all sand barriers cannot be predicted with the limited data base generated in this series of tests. However, the decision to employ sand-air-sand barriers, based on performance, must take into consideration the relative construction and maintenance costs, quantity-distance restrictions and the type of ordnance to be stored.

A cursory examination of the test results, for the standard test setup, show that the safe separation criteria established for the small diameter pipe cannot be used to predict safe separation distances for the large diameter pipe in terms of a simple explosive charge weight to pipe volume ratio. As expected, the smaller diameter pipes appear stronger than the larger diameter pipes on a charge weight to volume ratio basis. This can be accounted for in part by the fact that the pressure required to deform (crush) a steel pipe with a constant wall thickness decreases as the diameter of the pipe increases.

The results of a regression and discriminant analysis of the test results can be used to either design a new facility or evaluate the safety of an existing facility. The (1) regression and (2) discriminant equations are:

$$(1) \text{ Distance (inches)} = 15.48 + 4.524 (\text{LOC}) - .009 (\text{Ratio}) + 1.156 (\text{Wgt}) \\ - 11.675 (\text{DAM})$$

Where:

LOC = 1 for HE charge in center of pipe, 2 for HE charge in rear of pipe

$$\text{RATIO} = \frac{\text{Volume of Pipe (in.}^3\text{)}}{\text{HE Wgt (lb)}}$$

$$\text{Wgt} = \text{HE Wgt. (lb)}$$

$$\text{DAM} = 1 \text{ for damage, } 0 \text{ for no damage}$$

$$(2) \text{ RES} = - .624 + .1618 (\text{SD}) - 1.312 (\text{LOC}) + .00178 (\text{Ratio}) - .178 (\text{Wgt})$$

Where:

RES = positive for no damage, negative for damage

SD = separation distance in inches

LOC = 1 for HE charge in center of pipe, 2 for HE charge in rear of pipe

$$\text{RATIO} = \frac{\text{Volume of Pipe (in.}^3\text{)}}{\text{HE Wgt. (lb)}}$$

$$\text{Wgt} = \text{HE Wgt (lb)}$$

A comparison of the observed and predicted safe separation distances are presented in Figure 10. The predicted values were generated using both the regression equation (equation 1 - no damage case) and the discriminant equation (equation 2 where RES is set to zero - solve for SD).

In actual practice, storage facilities using sand covered pipes present potential debris and overpressure hazards that will be directional. Additional testing will be required to identify these hazards quantitatively before a safe site plan can be prepared.

V. CONCLUSIONS

Conservative estimates of the safe separation distances between sand covered steel pipes, designed to store explosive ordnance items, have been established empirically via donor acceptor tests. Limited test data are also available on the influence of venting, explosive charge position, top cover depth and the effectiveness of sand-air-sand barriers.

While the results of this series of tests can be used to estimate the distance between pipes required to localize damage in the event that the explosive ordnance items in one pipe detonate en masse, they do not identify debris and overpressure hazards. This will require additional testing.

- OBSERVED - NO DAMAGE
- OBSERVED - DAMAGE
- PREDICTED - NO DAMAGE (REGRESSION)
- △ PREDICTED - NO DAMAGE (DISCRIMINANT)

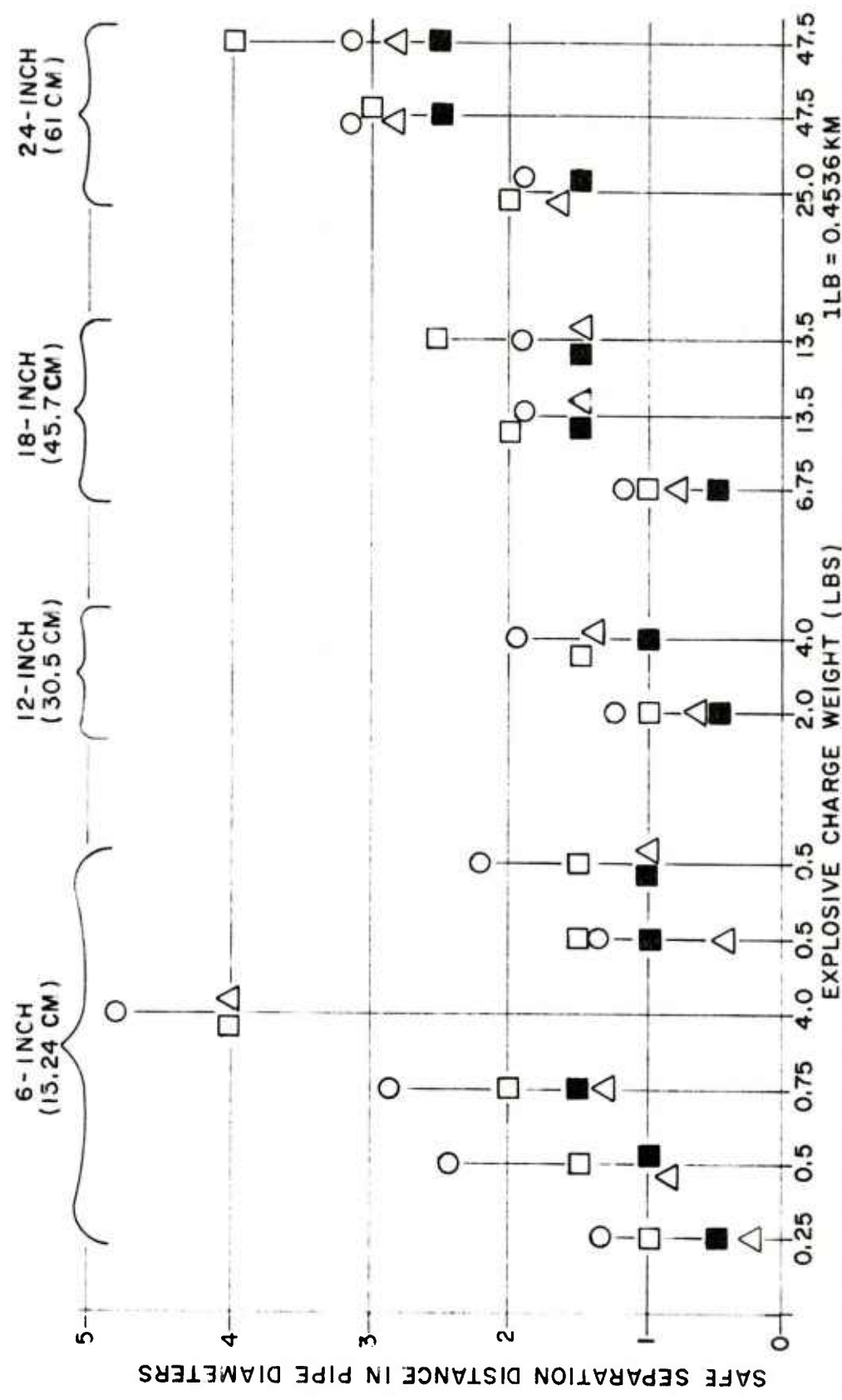


FIGURE 10. OBSERVED AND PREDICTED SAFE SEPARATION DISTANCES VERSUS EXPLOSIVE CHARGE WEIGHT.

ACKNOWLEDGEMENTS

The author is indebted to Mr. Terry Hanson, Mr. Rick Kane and Mr. Ronald Burk for their assistance in performing the experimental tests; and to Mr. Jack Grynovicki for his assistance in developing the regression and discriminant functions.

DISTRIBUTION LIST

<u>No. of Copies</u>	<u>Organization</u>	<u>No. of Copies</u>	<u>Organization</u>
12	Administrator Defense Technical Info Center ATTN: DTIC-DDA Cameron Station Alexandria, VA 22304-6145	1	Commander US Army Materiel Command ATTN: AMCDRA-ST 5001 Eisenhower Avenue Alexandria, VA 22333-0001
1	Chairman Department of Defense Explosives Safety Board 2461 Eisenhower Avenue Alexandria, VA 22331	1	Commander US Army Materiel Command ATTN: DRCSF 5001 Eisenhower Avenue Alexandria, VA 22333
1	Under Secretary of Defense for Research and Engineering Department of Defense Washington, DC 20301	1	Director SARCOM Field Safety Office Charlestown, IN 47111
1	Assistant Secretary of Defense (MRA&L) ATTN: EO&SP Washington, DC 20301	1	HQDA (DAPE-HRS) Washington, DC 20310
1	Director Defense Nuclear Agency ATTN: SPTD, Mr. T.E. Kennedy Washington, DC 20305	1	Commander Armament R&D Center US Army AMCCOM ATTN: SMCAR-TSS Dover, NJ 07801
1	Director Defense Nuclear Agency ATTN: DDST(E), Dr. E. Sevin Washington, DC 20305	1	Commander Armament R&D Center US Army AMCCOM ATTN: SMCAR-TDC Dover, NJ 07801
1	Director Defense Nuclear Agency ATTN: LEEE, Mr. J. Eddy Washington, DC 20305	1	Commander US Army AMCCOM, ARDC ATTN: SMCAR-SA Rock Island, IL 61299
1	HQDA ATTN: DAMA-CSM-CA, Mr. Lippi Washington, DC 20310	1	Commander Armament R&D Center US Army AMCCOM ATTN: SMCAR-LCM-SP Dover, NJ 07801
1	HQDA ATTN: COL R.D. Orton Washington, DC 20310		
1	HQDA DAMA-ART-M Washington, DC 20310		

DISTRIBUTION LIST

<u>No. of Copies</u>	<u>Organization</u>	<u>No. of Copies</u>	<u>Organization</u>
1	Commander US Army Armament, Munitions and Chemical Command ATTN: SMCAR-ESP-L Rock Island, IL 61299	1	Commander US Army Missile Command ATTN: AMSMI-R Redstone Arsenal, AL 35898
1	Director Benet Weapons Laboratory Armament R&D Center US Army AMCCOM ATTN: SMCAR-LCB-TL Watervliet, NY 12189	1	Commander US Army Missile Command ATTN: AMSMI-YDL Redstone Arsenal, AL 35898
1	Commander US Army Aviation Research and Development Command ATTN: AMSAV-E 4300 Goodfellow Blvd St. Louis, MO 63120	1	Commander US Army Tank Automotive Command ATTN: AMSTA-TSL Warren, MI 48090
1	Director US Army Air Mobility Research and Development Laboratory Ames Research Center Moffett Field, CA 94035	1	Director US Army TRADOC Systems Analysis Activity ATTN: ATAA-SL White Sands Missile Range, NM 88002
1	Commander US Army Communications - Electronics Command ATTN: AMSEL-ED Fort Monmouth, NJ 07703	1	Commandant US Army Infantry School ATTN: ATSH-CD-CSO-OR Fort Benning, GA 31905
1	Commander US Army Electronics Research and Development Command Technical Support Activity ATTN: DELSD-L Fort Monmouth, NJ 07703-5301	1	Commander US Army Belvoir R&D Center ATTN: AMDME-ND Mr. R. L. Brooke Fort Belvoir, VA 22060
1	Commander US Army Electronics Research and Development Command Technical Support Activity ATTN: DELSD-L Fort Monmouth, NJ 07703-5301	1	Chief of Engineers Department of the Army ATTN: DAEN-RDL, Mr. A.E. Simonini Washington, DC 20314
1	Commander US Army Communications- Electronics Command ATTN: AMSEL-BD Fort Monmouth, NJ 07703	1	Chief of Engineers Department of the Army ATTN: DAEN-RDZ-A, Dr. J. Choromokos Washington, DC 20314

DISTRIBUTION LIST

<u>No. of Copies</u>	<u>Organization</u>	<u>No. of Copies</u>	<u>Organization</u>
1	Chief of Engineers Department of the Army ATTN: DAEN-ECE-T, Mr. R.L. Wight Washington, DC 20314	1	Commander Naval Weapons Center ATTN: Code 0632, Mr. G. Ostermann China Lake, CA 93555
1	Commander US Army Engineer Waterways Experiment Station ATTN: WESNP P.O. Box 631 Vicksburg, MS 39180	1	Commander Naval Surface Weapons Center Dahlgren Laboratory ATTN: E-23, Mr. J.J. Walsh Dahlgren, VA 22448
1	Commander US Army Development & Employment Agency ATTN: MODE-TED-SAB Fort Lewis, WA 98433	1	Commander Naval Surface Weapons Center White Oak Laboratory ATTN: R-15, Mr. M.M. Swisdak Silver Spring, MD 20910
1	Commanding Officer Naval Facilities Engineering Command ATTN: Code 04T5 200 Stoval Street Alexandria, VA 22332	1	Commanding Officer Naval Weapons Support Center Crane, IN 47522
1	Chief of Naval Operations Department of the Navy ATTN: OP-411, CAPT V.E. Strickland Washington, DC 20350	1	Commander Naval EOD Technology Center ATTN: Code D, Mr. L. Dickinson Indian Head, MD 20640
1	Chief of Naval Operations Department of the Navy ATTN: OP-411, Mr. C. Ferraro, Jr. Washington, DC 20350	1	Officer in Charge Naval Civil Engineering Laboratory ATTN: Code L51, Mr. W.A. Keenan Port Hueneme, CA 93041
1	Chief of Naval Operations Department of the Navy ATTN: OP-411, Mr. C. Ferraro, Jr. Washington, DC 20350	1	AFWL/SUL Kirtland AFB, NM 87117
1	Commander Naval Sea Systems Command ATTN: SEA-06H, Mr. E.A. Daugherty Washington, DC 20362	1	AFISC/SEW ATTN: COL W.F. Gavitt, Jr. Norton AFB, CA 92409
1	Commander Naval Sea Systems Command ATTN: SEA-0333 Washington, DC 20362	1	AFISC/SEV ATTN: Mr. K.R. Shopher Norton AFB, CA 92409
		1	AFSC/IGFG/SDOA Andrews AFB Washington, DC 20334
		1	AFAL/DLYV ATTN: Mr. R.L. McGuire Eglin AFB, FL 32542-5000

DISTRIBUTION LIST

<u>No. of Copies</u>	<u>Organization</u>	<u>No. of Copies</u>	<u>Organization</u>
1	Air Force Armament Laboratory ATTN: AFATL/DLODL Eglin AFB, FL 32542-5000	1	Ammann & Whitney ATTN: Mr. N. Dobbs Suite 1700 Two World Trade Center New York, NY 10048
1	AFESC/RDC ATTN: Mr W.C. Buchholtz Tyndall AFB, FL 32403	1	Black & Vetach Consulting Engineers ATTN: Mr. H.L. Callahan 1500 Meadow Lake Parkway Kansas City, MO 64114
1	Director Office of Operational and Environmental Safety US Department of Energy Washington, DC 20545	1	Lovelace Research Institute ATTN: Dr. E.R. Fletcher P.O. Box 5890 Albuquerque, NM 87115
1	Albuquerque Operations Office US Department of Energy ATTN: Division of Operational Safety P.O. Box 5400 Albuquerque, NM 87115	1	Southwest Research Institute ATTN: Dr. W.E. Baker 6220 Culebra Road San Antonio, TX 78228
1	Mason & Hanger-Silas Mason Co., Inc. Pantex Plant ATTN: Director of Development P.O. Box 647 Amarillo, TX 79105	1	IIT Research Institute ATTN: Mrs. H. Napadensky 10 West 35th Street Chicago, IL 60616
1	Director U.S. Bureau of Mines Pittsburgh Mining & Safety Research Center ATTN: Mr. Richard W. Watson 4800 Forbes Avenue Pittsburgh, PA 15213	1	Applied Research Associates, Inc. ATTN: Mr. J.L. Drake 1204 Openwood Street Vicksburg, MS 39180
1	President Institute of Makers of Explosives ATTN: Mr. F.P. Smith, Jr., 1575 Eye Street, N.W., Washington, DC 20005		<u>Aberdeen Proving Ground</u> Dir, USAMSAA ATTN: AMXSU-D AMXSU-MP, H. Cohen Cdr, USATECOM ATTN: AMSTE-TO-F Cdr, CRDC, AMCCOM ATTN: SMCCR-RSP-A SMCCR-MU SMCCR-SPS-IL
1	Agbabian Associates ATTN: Dr. D.P. Reddy 250 N. Nash Street El Segundo, CA 90245		

USER EVALUATION SHEET/CHANGE OF ADDRESS

This Laboratory undertakes a continuing effort to improve the quality of the reports it publishes. Your comments/answers to the items/questions below will aid us in our efforts.

1. BRL Report Number _____ Date of Report _____
2. Date Report Received _____
3. Does this report satisfy a need? (Comment on purpose, related project, or other area of interest for which the report will be used.) _____

4. How specifically, is the report being used? (Information source, design data, procedure, source of ideas, etc.) _____

5. Has the information in this report led to any quantitative savings as far as man-hours or dollars saved, operating costs avoided or efficiencies achieved, etc? If so, please elaborate. _____

6. General Comments. What do you think should be changed to improve future reports? (Indicate changes to organization, technical content, format, etc.) _____

CURRENT ADDRESS

Name _____

Organization _____

Address _____

City, State, Zip _____

7. If indicating a Change of Address or Address Correction, please provide the New or Correct Address in Block 6 above and the Old or Incorrect address below.

OLD ADDRESS

Name _____

Organization _____

Address _____

City, State, Zip _____

(Remove this sheet along the perforation, fold as indicated, staple or tape closed, and mail.)