

AD-A161 074

SELECTED MEDICAL CARE STATISTICS THIRD QUARTER FY-85

1/1

(U) WASHINGTON HEADQUARTERS SERVICES (DOD) DC

DIRECTORATE FOR INFORMATION OPERATIONS AND REPORTS

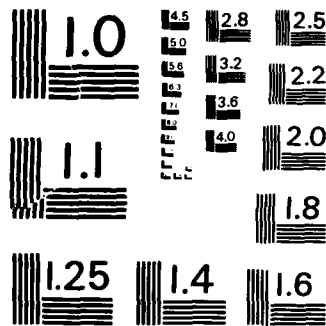
30 JUN 85 DIOR/L02-85/03

F/G 6/5

NL

UNCLASSIFIED





MICROCOPY RESOLUTION TEST CHART
NATIONAL BUREAU OF STANDARDS-1963-A

DIER | 102-85/03

L02

DEPARTMENT OF DEFENSE

SELECTED MEDICAL CARE STATISTICS

Quarter Ending June 30, 1985

Third Quarter, FY-85



This document has been approved for release and sale in unlimited quantities.

85 11 18 002

ADA 16102

Department of Defense Selected Medical Care Statistics

Quarter Ending June 30, 1985

*Washington Headquarters Services
Directorate for Information
Operations and Reports*

~~FOR SALE BY THE SUPERINTENDENT OF DOCUMENTS
U.S. GOVERNMENT PRINTING OFFICE
WASHINGTON, D.C. 20402~~

FOREWORD

Selected Medical Care Statistics (SMCS) is a quarterly publication prepared by the Washington Headquarters Services, Directorate for Information Operations and Reports (WHS/DIOR) of the Office of the Secretary of Defense.

SMCS presents quarterly summary data concerning medical care provided at fixed military medical facilities located in (1) the United States and (2) outside the United States, in territories, possessions and foreign countries.

This publication is generated from a computerized data base developed and maintained in consonance with Department of Defense Instruction (DoDI) 6015.14, November 14, 1977, under Reports Control Symbol DD-COMP(Q)1474 by the Manpower Management Information Division of WHS/DIOR.

TABLE OF CONTENTS

TABLE NUMBER		PAGE
Table 1.1	Operating Beds/Operating Bassinets/Beds Occupied - Worldwide	1
Table 1.2	Operating Beds/Operating Bassinets/Beds Occupied - United States	2
Table 1.3	Operating Beds/Operating Bassinets/Beds Occupied - Outside United States	3
Table 2.1	Admissions - Worldwide	4
Table 2.2	Admissions - United States	5
Table 2.3	Admissions - Outside United States	6
Table 3.1	Outpatient Visits and Live Births - Worldwide	7
Table 3.2	Outpatient Visits and Live Births - United States	8
Table 3.3	Outpatient Visits and Live Births - Outside United States	9
	GLOSSARY	10

TABLE 1.1
DEPARTMENT OF DEFENSE
SELECTED DATA CONCERNING MEDICAL CARE
PROVIDED AT FIXED MILITARY FACILITIES
FOR QUARTER ENDING
JUNE 1985

OPERATING BEDS - WORLDWIDE		DOD TOTAL	ARMY FACILITIES	NAVY FACILITIES	AIR FORCE FACILITIES
1.	NUMBER OF OPERATING BEDS	18,747	7,936	4,857	5,954
2.	NUMBER OF OPERATING BASSINETS	2,063	620	328	1,115
3.	NUMBER OF BEDS OCCUPIED (DAILY AVERAGE)	14,732	6,730	3,555	4,447
4.	BEDS OCCUPIED BY US ACTIVE DUTY UNIFORMED PERSONNEL - TOTAL	5,419	2,415	1,664	1,340
	A. MILITARY	5,361	2,402	1,629	1,330
	(1) ARMY	2,280	2,097	58	125
	(2) NAVY-MARINE CORPS	1,767	141	1,517	109
	(3) AIR FORCE	1,314	164	54	1,096
	B. OTHER UNIFORMED PERSONNEL (PHS,CG,NOAA)	58	13	35	10
5.	BEDS OCCUPIED BY RETIRED US UNIFORMED PERSONNEL - TOTAL	2,446	1,173	467	806
	A. RETIRED MILITARY	2,419	1,164	457	798
	(1) ARMY	1,015	780	76	159
	(2) NAVY-MARINE CORPS	568	135	316	117
	(3) AIR FORCE	836	249	65	522
	B. OTHER RETIRED UNIFORMED PERSONNEL (PHS,CG,NOAA)	27	9	10	8
6.	BEDS OCCUPIED BY DEPENDENTS OF US ACTIVE DUTY MILITARY PERSONNEL - TOTAL	4,152	1,785	928	1,439
	(1) ARMY	1,620	1,435	50	135
	(2) NAVY-MARINE CORPS	1,086	145	817	124
	(3) AIR FORCE	1,446	205	61	1,180
7.	BEDS OCCUPIED BY DEPENDENTS OF RETIRED AND DECEASED US MILITARY PERSONNEL - TOTAL	2,094	923	401	770
	(1) ARMY	817	600	71	146
	(2) NAVY-MARINE CORPS	496	115	270	111
	(3) AIR FORCE	781	208	60	513
8.	BEDS OCCUPIED BY DEPENDENTS OF OTHER UNIFORMED PERSONNEL (PHS,CG,NOAA)	58	17	25	16
9.	BEDS OCCUPIED BY ALL OTHER BENEFICIARIES - TOTAL	563	417	70	76

TABLE 1.2
DEPARTMENT OF DEFENSE
SELECTED DATA CONCERNING MEDICAL CARE
PROVIDED AT FIXED MILITARY FACILITIES
FOR QUARTER ENDING
JUNE 1985

OPERATING BEDS - UNITED STATES		DOD TOTAL	ARMY FACILITIES	NAVY FACILITIES	AIR FORCE FACILITIES
1.	NUMBER OF OPERATING BEDS	16,103	6,579	4,314	5,210
2.	NUMBER OF OPERATING BASSINETS	1,712	464	287	961
3.	NUMBER OF BEDS OCCUPIED (DAILY AVERAGE)	12,618	5,578	3,173	3,867
4.	BEDS OCCUPIED BY US ACTIVE DUTY UNIFORMED PERSONNEL	4,337	1,834	1,430	1,073
	A. MILITARY	4,281	1,821	1,397	1,063
	(1) ARMY	1,702	1,564	53	85
	(2) NAVY-MARINE CORPS	1,518	128	1,306	84
	(3) AIR FORCE	1,061	129	38	894
	B. OTHER UNIFORMED PERSONNEL (PHS,CG,NOAA)	56	13	33	10
5.	BEDS OCCUPIED BY RETIRED US UNIFORMED PERSONNEL	2,375	1,142	453	780
	A. RETIRED MILITARY	2,348	1,133	443	772
	(1) ARMY	982	757	72	153
	(2) NAVY-MARINE CORPS	552	133	308	111
	(3) AIR FORCE	814	243	63	508
	B. OTHER RETIRED UNIFORMED PERSONNEL (PHS,CG,NOAA)	27	9	10	8
6.	BEDS OCCUPIED BY DEPENDENTS OF US ACTIVE DUTY MILITARY PERSONNEL	3,335	1,334	816	1,185
	(1) ARMY	1,189	1,045	41	103
	(2) NAVY-MARINE CORPS	984	140	740	104
	(3) AIR FORCE	1,162	149	35	978
7.	BEDS OCCUPIED BY DEPENDENTS OF RETIRED AND DECEASED US MILITARY PERSONNEL	2,055	908	393	754
	(1) ARMY	799	589	68	142
	(2) NAVY-MARINE CORPS	487	114	266	107
	(3) AIR FORCE	769	205	59	505
8.	BEDS OCCUPIED BY DEPENDENTS OF OTHER UNIFORMED PERSONNEL (PHS,CG,NOAA)	57	17	24	16
9.	BEDS OCCUPIED BY ALL OTHER BENEFICIARIES	459	343	57	59

TABLE 1.3
DEPARTMENT OF DEFENSE
SELECTED DATA CONCERNING MEDICAL CARE
PROVIDED AT FIXED MILITARY FACILITIES
FOR QUARTER ENDING
JUNE 1985

OPERATING BEDS - OUTSIDE UNITED STATES		DOD TOTAL	ARMY FACILITIES	NAVY FACILITIES	AIR FORCE FACILITIES
1.	NUMBER OF OPERATING BEDS	2,644	1,357	543	744
2.	NUMBER OF OPERATING BASSINETS	351	156	41	154
3.	NUMBER OF BEDS OCCUPIED (DAILY AVERAGE)	2,114	1,152	382	580
4.	BEDS OCCUPIED BY US ACTIVE DUTY UNIFORMED PERSONNEL	1,082	581	234	267
A.	MILITARY	1,080	581	232	267
(1)	ARMY	578	533	5	40
(2)	NAVY-MARINE CORPS	249	13	211	25
(3)	AIR FORCE	253	35	16	202
B.	OTHER UNIFORMED PERSONNEL (PHS,CG,NOAA)	2	0	2	0
5.	BEDS OCCUPIED BY RETIRED US UNIFORMED PERSONNEL	71	31	14	26
A.	RETIRED MILITARY	71	31	14	26
(1)	ARMY	33	23	4	6
(2)	NAVY-MARINE CORPS	16	2	8	6
(3)	AIR FORCE	22	6	2	14
B.	OTHER RETIRED UNIFORMED PERSONNEL (PHS,CG,NOAA)	0	0	0	0
6.	BEDS OCCUPIED BY DEPENDENTS OF US ACTIVE DUTY MILITARY PERSONNEL	817	451	112	254
(1)	ARMY	431	390	9	32
(2)	NAVY-MARINE CORPS	102	5	77	20
(3)	AIR FORCE	284	56	26	202
7.	BEDS OCCUPIED BY DEPENDENTS OF RETIRED AND DECEASED US MILITARY PERSONNEL	39	15	8	16
(1)	ARMY	18	11	3	4
(2)	NAVY-MARINE CORPS	9	1	4	4
(3)	AIR FORCE	12	3	1	8
8.	BEDS OCCUPIED BY DEPENDENTS OF OTHER UNIFORMED PERSONNEL (PHS,CG,NOAA)	1	0	1	0
9.	BEDS OCCUPIED BY ALL OTHER BENEFICIARIES	104	74	13	17

TABLE 2.1
DEPARTMENT OF DEFENSE
SELECTED DATA CONCERNING MEDICAL CARE
PROVIDED AT FIXED MILITARY FACILITIES
FOR QUARTER ENDING
JUNE 1985

ADMISSIONS - WORLDWIDE		DOD TOTAL	ARMY FACILITIES	NAVY FACILITIES	AIR FORCE FACILITIES
10.	NUMBER OF ADMISSIONS	242,926	104,016	60,433	78,477
11.	ADMISSIONS OF US ACTIVE DUTY UNIFORMED PERSONNEL	71,483	30,117	20,974	20,392
	A. MILITARY	70,892	30,000	20,664	20,228
	(1) ARMY	28,390	26,315	673	1,402
	(2) NAVY-MARINE CORPS	21,883	1,595	19,245	1,043
	(3) AIR FORCE	20,619	2,090	746	17,783
	B. OTHER UNIFORMED PERSONNEL (PHS, CG, NOAA)	591	117	310	164
12.	ADMISSIONS OF RETIRED US UNIFORMED PERSONNEL	28,937	13,042	6,354	9,541
	A. ADMISSIONS OF RETIRED MILITARY	28,633	12,943	6,226	9,464
	(1) ARMY	11,806	8,868	1,023	1,915
	(2) NAVY-MARINE CORPS	7,050	1,403	4,292	1,355
	(3) AIR FORCE	9,777	2,672	911	6,194
	B. ADMISSIONS OF OTHER RETIRED UNIFORMED PERSONNEL (PHS, CG, NOAA)	304	99	128	77
13.	ADMISSIONS OF DEPENDENTS OF US ACTIVE DUTY MILITARY PERSONNEL	102,812	42,416	25,156	35,240
	A. ARMY	39,344	34,969	1,225	3,150
	B. NAVY-MARINE CORPS	28,208	3,183	22,350	2,675
	C. AIR FORCE	35,260	4,264	1,581	29,415
14.	ADMISSIONS OF DEPENDENTS OF RETIRED AND DECEASED US MILITARY PERSONNEL	29,994	12,270	6,398	11,326
	A. ARMY	11,439	8,179	1,097	2,163
	B. NAVY-MARINE CORPS	7,443	1,486	4,348	1,609
	C. AIR FORCE	11,112	2,605	953	7,554
15.	ADMISSIONS OF DEPENDENTS OF OTHER UNIFORMED MILITARY PERSONNEL	1,208	311	537	360
16.	ADMISSIONS OF ALL OTHER BENEFICIARIES	8,492	5,860	1,014	1,618

TABLE 2.2
DEPARTMENT OF DEFENSE
SELECTED DATA CONCERNING MEDICAL CARE
PROVIDED AT FIXED MILITARY FACILITIES
FOR QUARTER ENDING
JUNE 1985

ADMISSIONS - UNITED STATES		DOD TOTAL	ARMY FACILITIES	NAVY FACILITIES	AIR FORCE FACILITIES
10.	NUMBER OF ADMISSIONS	- TOTAL	83,902	53,401	67,699
11.	ADMISSIONS OF US ACTIVE DUTY UNIFORMED PERSONNEL	- TOTAL	22,559	17,791	16,403
	A. MILITARY	- TOTAL	22,442	17,508	16,240
	(1) ARMY	21,042	19,524	589	929
	(2) NAVY-MARINE CORPS	18,669	1,449	16,453	767
	(3) AIR FORCE	16,477	1,469	464	14,544
	B. OTHER UNIFORMED PERSONNEL (PHS,CG,NOAA)	565	117	285	163
12.	ADMISSIONS OF RETIRED US UNIFORMED PERSONNEL	- TOTAL	12,691	6,133	9,256
	A. ADMISSIONS OF RETIRED MILITARY	27,787	12,593	6,011	9,183
	(1) ARMY	11,383	8,586	952	1,845
	(2) NAVY-MARINE CORPS	6,846	1,382	4,175	1,289
	(3) AIR FORCE	9,558	2,625	884	6,049
	B. ADMISSIONS OF OTHER RETIRED UNIFORMED PERSONNEL (PHS,CG,NOAA)	293	98	122	73
13.	ADMISSIONS OF DEPENDENTS OF US ACTIVE DUTY MILITARY PERSONNEL	- TOTAL	31,404	22,001	29,470
	A. ARMY	28,764	25,404	967	2,393
	B. NAVY-MARINE CORPS	25,665	3,085	20,171	2,399
	C. AIR FORCE	28,446	2,905	863	24,678
14.	ADMISSIONS OF DEPENDENTS OF RETIRED AND DECEASED US MILITARY PERSONNEL	- TOTAL	12,033	6,204	11,081
	A. ARMY	11,143	8,022	1,007	2,114
	B. NAVY-MARINE CORPS	7,257	1,460	4,262	1,535
	C. AIR FORCE	10,918	2,551	935	7,432
15.	ADMISSIONS OF DEPENDENTS OF OTHER UNIFORMED MILITARY PERSONNEL	- TOTAL	310	520	356
16.	ADMISSIONS OF ALL OTHER BENEFICIARIES	- TOTAL	4,905	752	1,133

TABLE 2.3
DEPARTMENT OF DEFENSE
SELECTED DATA CONCERNING MEDICAL CARE
PROVIDED AT FIXED MILITARY FACILITIES
FOR QUARTER ENDING
JUNE 1985

	ADMISSIONS - OUTSIDE UNITED STATES	DOD TOTAL	ARMY FACILITIES	NAVY FACILITIES	AIR FORCE FACILITIES
10. NUMBER OF ADMISSIONS	- TOTAL	37,924	20,114	7,032	10,778
11. ADMISSIONS OF US ACTIVE DUTY UNIFORMED PERSONNEL	- TOTAL	14,730	7,558	3,183	3,989
A. MILITARY	- TOTAL	14,704	7,558	3,158	3,988
(1) ARMY		7,348	6,791	84	473
(2) NAVY-MARINE CORPS		3,214	146	2,792	276
(3) AIR FORCE		4,142	621	282	3,239
B. OTHER UNIFORMED PERSONNEL (PHS, CG, NOAA)	- TOTAL	26	0	25	1
12. ADMISSIONS OF RETIRED US UNIFORMED PERSONNEL	- TOTAL	857	351	221	285
A. ADMISSIONS OF RETIRED MILITARY		846	350	215	281
(1) ARMY		423	282	71	70
(2) NAVY-MARINE CORPS		204	21	117	66
(3) AIR FORCE		219	47	27	145
B. ADMISSIONS OF OTHER RETIRED UNIFORMED PERSONNEL (PHS, CG, NOAA)	- TOTAL	11	1	6	4
13. ADMISSIONS OF DEPENDENTS OF US ACTIVE DUTY MILITARY PERSONNEL	- TOTAL	19,937	11,012	3,155	5,770
A. ARMY		10,580	9,565	258	757
B. NAVY-MARINE CORPS		2,543	88	2,179	276
C. AIR FORCE		6,814	1,359	718	4,737
14. ADMISSIONS OF DEPENDENTS OF RETIRED AND DECEASED US MILITARY PERSONNEL	- TOTAL	676	237	194	245
A. ARMY		296	157	90	49
B. NAVY-MARINE CORPS		186	26	86	74
C. AIR FORCE		194	54	18	122
15. ADMISSIONS OF DEPENDENTS OF OTHER UNIFORMED MILITARY PERSONNEL	- TOTAL	22	1	17	4
16. ADMISSIONS OF ALL OTHER BENEFICIARIES	- TOTAL	1,702	955	262	485

TABLE 3.1
 DEPARTMENT OF DEFENSE
 SELECTED DATA CONCERNING MEDICAL CARE
 PROVIDED AT FIXED MILITARY FACILITIES
 FOR QUARTER ENDING
 JUNE 1985

	OUTPATIENT VISITS - WORLDWIDE	DOD TOTAL	ARMY FACILITIES	NAVY FACILITIES	AIR FORCE FACILITIES
17.	NUMBER OF OUTPATIENT VISITS	12,533,362	5,250,602	3,271,877	4,010,883
18.	OUTPATIENT VISITS BY US ACTIVE DUTY UNIFORMED PERSONNEL				
	- TOTAL	4,775,638	2,057,975	1,393,873	1,323,790
A.	MILITARY	4,752,987	2,053,500	1,379,820	1,319,667
	(1) ARMY	2,017,739	1,954,627	20,200	42,912
	(2) NAVY-MARINE CORPS	1,414,724	44,191	1,340,590	29,943
	(3) AIR FORCE	1,320,524	54,682	19,030	1,246,812
B.	OTHER UNIFORMED PERSONNEL (PHS, CG, NOAA)	22,651	4,475	14,053	4,123
19.	OUTPATIENT VISITS BY RETIRED US UNIFORMED PERSONNEL - TOTAL	1,166,098	487,495	258,067	420,536
20.	OUTPATIENT VISITS BY DEPENDENTS OF US ACTIVE DUTY UNIFORMED PERSONNEL				
	- TOTAL	4,181,821	1,656,018	1,013,599	1,512,204
A.	DEPENDENTS OF MILITARY PERSONNEL	4,148,835	1,649,279	996,755	1,502,801
	(1) ARMY	1,579,854	1,454,494	38,807	86,553
	(2) NAVY-MARINE CORPS	1,066,138	80,026	924,130	61,982
	(3) AIR FORCE	1,502,843	114,759	33,818	1,354,266
B.	DEPENDENTS OF OTHER UNIFORMED PERSONNEL (PHS, CG, NOAA)	32,986	6,739	16,844	9,403
21.	OUTPATIENT VISITS BY DEPENDENTS OF RETIRED AND DECEASED US UNIFORMED PERSONNEL	1,507,958	578,766	302,019	627,173
22.	OUTPATIENT VISITS BY ALL OTHER BENEFICIARIES	901,847	470,348	304,319	127,180
23.	NUMBER OF LIVE BIRTHS	28,723	11,168	7,877	9,678

TABLE 3.2
DEPARTMENT OF DEFENSE
SELECTED DATA CONCERNING MEDICAL CARE
PROVIDED AT FIXED MILITARY FACILITIES
FOR QUARTER ENDING
JUNE 1985

	OUTPATIENT VISITS - UNITED STATES	DOD TOTAL	ARMY FACILITIES	NAVY FACILITIES	AIR FORCE FACILITIES
17. NUMBER OF OUTPATIENT VISITS	- TOTAL	10,558,928	4,178,181	2,972,313	3,408,434
18. OUTPATIENT VISITS BY US ACTIVE DUTY UNIFORMED PERSONNEL	- TOTAL	3,797,290	1,509,978	1,240,052	1,047,260
A. MILITARY	- TOTAL	3,775,729	1,505,506	1,226,930	1,043,293
(1) ARMY		1,467,540	1,424,286	16,419	26,835
(2) NAVY-MARINE CORPS		1,262,211	40,819	1,199,194	22,198
(3) AIR FORCE		1,045,978	40,401	11,317	994,260
B. OTHER UNIFORMED PERSONNEL (PHS, CG, NOAA)	- TOTAL	21,561	4,472	13,122	3,967
19. OUTPATIENT VISITS BY RETIRED US UNIFORMED PERSONNEL	- TOTAL	1,137,490	475,330	250,323	411,837
20. OUTPATIENT VISITS BY DEPENDENTS OF US ACTIVE DUTY UNIFORMED PERSONNEL	- TOTAL	3,336,724	1,198,306	914,340	1,224,078
A. DEPENDENTS OF MILITARY PERSONNEL	- TOTAL	3,305,154	1,191,574	898,472	1,215,108
(1) ARMY		1,121,902	1,025,851	33,038	63,013
(2) NAVY-MARINE CORPS		974,533	76,103	842,357	56,073
(3) AIR FORCE		1,208,719	89,620	23,077	1,096,022
B. DEPENDENTS OF OTHER UNIFORMED PERSONNEL (PHS, CG, NOAA)	- TOTAL	31,570	6,732	15,868	8,970
21. OUTPATIENT VISITS BY DEPENDENTS OF RETIRED AND DECEASED US UNIFORMED PERSONNEL	- TOTAL	1,482,672	570,419	294,096	618,157
22. OUTPATIENT VISITS BY ALL OTHER BENEFICIARIES	- TOTAL	804,752	424,148	273,502	107,102
23. NUMBER OF LIVE BIRTHS	- TOTAL	23,207	8,034	6,867	8,306

TABLE 3.3
DEPARTMENT OF DEFENSE
SELECTED DATA CONCERNING MEDICAL CARE
PROVIDED AT FIXED MILITARY FACILITIES
FOR QUARTER ENDING
JUNE 1985

	OUTPATIENT VISITS - OUTSIDE UNITED STATES	DOD TOTAL	ARMY FACILITIES	NAVY FACILITIES	AIR FORCE FACILITIES
17. NUMBER OF OUTPATIENT VISITS	- TOTAL	1,974,434	1,072,421	299,564	602,449
18. OUTPATIENT VISITS BY US ACTIVE DUTY UNIFORMED PERSONNEL	- TOTAL	978,348	547,997	153,821	276,530
A. MILITARY	- TOTAL	977,258	547,994	152,890	276,374
(1) ARMY		550,199	530,341	3,781	16,077
(2) NAVY-MARINE CORPS		152,513	3,372	141,396	7,745
(3) AIR FORCE		274,546	14,281	7,713	252,552
B. OTHER UNIFORMED PERSONNEL (PHS,CG,NOAA)	- TOTAL	1,090	3	931	156
19. OUTPATIENT VISITS BY RETIRED US UNIFORMED PERSONNEL	- TOTAL	28,608	12,185	7,744	8,699
20. OUTPATIENT VISITS BY DEPENDENTS OF US ACTIVE DUTY UNIFORMED PERSONNEL	- TOTAL	845,097	457,712	99,259	288,126
A. DEPENDENTS OF MILITARY PERSONNEL	- TOTAL	843,681	457,705	98,283	287,693
(1) ARMY		457,952	428,643	5,769	23,540
(2) NAVY-MARINE CORPS		91,605	3,923	81,773	5,909
(3) AIR FORCE		294,124	25,139	10,741	258,244
B. DEPENDENTS OF OTHER UNIFORMED PERSONNEL (PHS,CG,NOAA)	- TOTAL	1,416	7	976	433
21. OUTPATIENT VISITS BY DEPENDENTS OF RETIRED AND DECEASED US UNIFORMED PERSONNEL	- TOTAL	25,286	8,347	7,923	9,016
22. OUTPATIENT VISITS BY ALL OTHER BENEFICIARIES	- TOTAL	97,095	46,200	30,817	20,078
23. NUMBER OF LIVE BIRTHS	- TOTAL	5,516	3,134	1,010	1,372

GLOSSARY

Admission. An admission is the act of placing an individual under treatment or observation in a medical center or a hospital. The day of admission is the day on which the medical center or hospital makes a formal acceptance of the patient who is to be provided with room, board, and continuous nursing service in an area of the hospital where patients normally stay at least overnight. If both an admission and discharge occur on the same day, then that day is considered as a day of admission and shall be counted as one occupied bed day. The admission of a newborn is deemed to occur at time of birth.

Live Births. A live birth is the complete expulsion or extraction from its mother of a product of conception, irrespective of the duration of pregnancy which after such separation, breathes or shows any other evidence of life such as beating of the heart, pulsation of the umbilical cord, or definite movement of voluntary muscles, whether or not the umbilical cord has been cut, or the placenta is attached; each such product of such a birth is considered liveborn.

Occupied Bed. A bed assigned as of midnight to a patient, to include a patient on pass or liberty not in excess of 72 hours, and any bassinets assigned to a newborn infant whose mother has been discharged from the hospital. The definition excludes: any bed assigned to a patient subsisting out, on leave, or absent without leave, and any bed occupied by a transient patient.

Operating Bed. A bed that is currently set up and ready in all respects for the care of a patient. It must include supporting space, equipment and staff to operate under normal circumstances. Excluded are nursery bassinets and transient patients' beds.

Operating Bassinet. A bed designed for the care of an infant that is currently set up in the newborn nursery and ready in all respects for use. It must include support space, equipment and staff to operate under normal circumstances. Excluded are infant transporters.

Outpatient Visits. Visits made to each dispensary or separate, organized clinic of a fixed medical treatment facility for medical advice, examination, diagnosis, treatment, evaluation, consultation, or counseling, including visits by military patients who are excused from duty for medical reasons but who have not been admitted for inpatient care in a facility authorized beds for inpatient care and any visits made incident to complete physicals or flight physicals.

END

Dtjic

5-86