

AD-A163 313

PRIME CONTRACT AWARDS BY STATE FISCAL YEAR 1985(U)
WASHINGTON HEADQUARTERS SERVICES (DOD) DC DIRECTORATE
FOR INFORMATION OPERATIONS AND REPORTS 1985

1/1

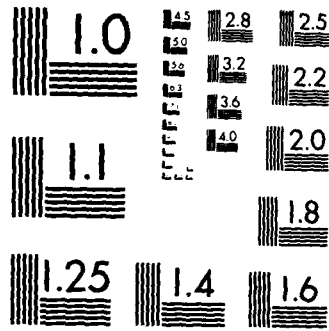
UNCLASSIFIED

DIOR/P89-85/02

F/G 15/5

NL





MICROCOPY RESOLUTION TEST CHART
NATIONAL BUREAU OF STANDARDS-1963-A

12

AD-A163 313

Department of Defense PRIME CONTRACT AWARDS BY STATE

Fiscal Year 1985

DTIC
ELECTE
JAN 24 1986
S D



DTIC FILE COPY

DISTRIBUTION STATEMENT A
Approved for public release
Distribution Unlimited

PRIME CONTRACT AWARDS BY STATE

Fiscal Year 1985

**Department of Defense
Washington Headquarters Services
Directorate for Information
Operations and Reports**

~~For sale by the Superintendent of Documents, U.S. Government Printing Office, Washington, D.C. 20540~~

DTIC and NTIS identification number for this publication is DIOR/P09-85/02

FOREWORD

Prime Contract Awards by State is published semiannually.

This report provides information on Department of Defense procurement actions. Data are broken down into three categories:

- 1) Total U.S. Actions;
- 2) Actions Not Distributed by State; and
- 3) Total State Actions, which is further divided into separate totals for each state.

Accession For	
NTIS CRA&I	<input checked="" type="checkbox"/>
DTIC TAB	<input type="checkbox"/>
Unannounced	<input type="checkbox"/>
Justification	
By	
Distribution /	
Availability Codes	
Dist	Avail and/or Special
A-1	



TABLE OF CONTENTS

Introduction.	1
Tables:	
Table 1. Net Value and Percent Distribution of DOD Procurement Actions, by State: FY 1985, FY 1984, and Fourth Quarter FY 1985 and FY 1984	3
Table 2. Net Value and Percent Distribution of DOD Military Procurement Actions, by State: FY 1985, FY 1984 and Fourth Quarter FY 1985 and FY 1984.	4
Table 3. Net Value and Percent Distribution of DOD Military Procurement Actions, by State, According to Defense Component: FY 1985	5
Table 4. Net Value and Percent Distribution of DOD Military Procurement Actions, by State: FY 1985, FY 1984, and FY 1983	6
Table 5. Net Value and Percent Distribution of Civil Functions Procurement Actions, by State: FY 1985, FY 1984, and FY 1983	7

INTRODUCTION

Prime Contract Awards by State provides a wide variety of information on all Department of Defense (DOD) procurement actions. Both military and civil functions (i.e., ~~Army Corps of Engineers -- Civil Works~~) procurements are represented. The data are presented by state and include the net value of procurements awarded to each state as well as each state's percentage of the total for all state procurements.

The total net value of procurement actions for Fiscal Year (FY) 1985 and FY 1984 are shown for all of DOD in Table 1 and for its military components only in Table 2. These tables also provide, for comparison purposes, data for the fourth quarter of FY 1985 and FY 1984. The total net value of military procurement actions for FY 1985 (presented in Table 2) are displayed according to defense component in Table 3. Table 4 displays the total net value of military procurement actions for FY 1983 through FY 1985. Data on the total net value of civil functions procurement actions for FY 1983 through FY 1985 are provided in Table 5.

NOTES ON COVERAGE

Data in this report reflect the net value of debit and credit procurement actions over \$25,000, i.e., terminations, price changes, or other downward adjustments which are deducted from a contractor's total award amount, while modifications and other positive adjustments are treated as increases. Procurement actions include definitive contracts; the obligated portions of letter contracts; and job orders, task orders, delivery orders, or any other orders against existing contracts. Contracts for research and development, services, construction, and supplies and equipment are included. Contracts awarded by DOD to other Government agencies as intragovernmental orders and foreign military sales (reimbursable sales to foreign governments) are also included.

The data base from which information for this report is collected does not include data on those parts of indefinite quantity contracts (except for petroleum products) that have not been translated into specific orders to businesses, those contracts that have not yet become mutually binding agreements between the Government and the contractor, or prime contracts awarded by other U.S. government agencies and financed with DOD funds.

Location of Contracts

Contract work is not necessarily performed in the state where the contract is awarded. Most manufacturing contracts have been attributed to the contractor's location where the product will be processed and assembled. When contract work has been performed at more than one plant, the contract has been attributed to the location where the largest dollar amount of work was produced. Both construction and service contracts have been attributed to the state where the work is to be performed. Contracts for transportation and communications services have been attributed to the state where the contractor's home office is located. For purchases from wholesale or other distribution firms, the location is the contractor's business address.

Totals

The United States total in the tables includes all contracts awarded for work performed in the United States. The United States as used here includes the 50 states, the District of Columbia, U.S. possessions, the Commonwealth of Puerto Rico, the Trust Territories of the Pacific, and other areas subject to complete U.S. sovereignty.

The subtotal "Not Distributed by State" includes all contract actions of \$25,000 or less for performance in the United States. This subtotal also includes all contract

Table 1. Net Value and Percent Distribution of DOD Procurement Actions, by State: FY 1985, FY 1984, and Fourth Quarter FY 1985 and FY 1984^{1,2}

(Amounts in Thousands)

STATE	FISCAL YEAR 1985		FISCAL YEAR 1984		FOURTH QUARTER FY 1985 (JULY-SEPT)		FOURTH QUARTER FY 1984 (JULY-SEPT)	
	AMOUNT	PERCENT	AMOUNT	PERCENT	AMOUNT	PERCENT	AMOUNT	PERCENT
TOTAL, U.S.	\$153,531,443		\$136,506,573		\$46,430,862		\$40,331,502	
NOT DISTRIBUTED BY STATE	13,435,162		12,511,596		4,609,661		4,546,577	
STATE TOTALS	140,096,281	100.0	123,994,977	100.0	41,821,201	100.0	35,784,925	100.0
Alabama	1,417,942	1.0	1,131,637	0.9	422,651	1.0	411,316	1.1
Alaska	550,403	0.4	436,501	0.4	173,329	0.4	167,761	0.5
Arizona	2,005,768	1.4	1,764,241	1.4	698,293	1.7	525,448	1.5
Arkansas	809,597	0.6	691,732	0.6	144,333	0.3	144,153	0.4
California	29,114,566	20.8	28,519,741	23.0	8,525,661	20.4	7,545,193	21.1
Colorado	1,563,371	1.1	1,153,188	0.9	601,985	1.4	401,991	1.1
Connecticut	5,543,448	4.0	5,459,344	4.4	2,292,032	5.5	1,608,894	4.5
Delaware	261,408	0.2	226,338	0.2	35,037	0.1	30,823	0.1
District of Columbia	1,103,549	0.8	815,499	0.7	248,379	0.6	199,593	0.6
Florida	5,271,239	3.8	4,033,680	3.3	1,559,046	3.7	1,466,787	4.1
Georgia	3,520,329	2.5	3,122,839	2.5	652,102	1.6	712,119	2.0
Hawaii	626,153	0.4	536,735	0.4	272,372	0.7	178,467	0.5
Idaho	50,430	*	50,796	*	21,086	0.1	16,550	*
Illinois	1,693,394	1.2	1,475,916	1.2	570,234	1.4	502,428	1.4
Indiana	3,176,772	2.3	2,521,610	2.0	1,193,448	2.9	812,280	2.3
Iowa	589,762	0.4	405,277	0.3	209,896	0.5	137,526	0.4
Kansas	2,138,934	1.5	2,361,961	1.9	719,199	1.7	554,576	1.5
Kentucky	505,511	0.4	448,060	0.4	137,868	0.3	107,920	0.3
Louisiana	2,175,371	1.6	1,855,210	1.5	173,582	0.4	261,968	0.7
Maine	956,753	0.7	532,352	0.4	109,559	0.3	138,672	0.4
Maryland	4,608,106	3.3	4,013,171	3.2	1,740,852	4.2	1,398,135	3.9
Massachusetts	7,713,546	5.5	7,028,885	5.7	1,768,217	4.2	1,996,358	5.6
Michigan	2,789,002	2.0	2,510,005	2.0	852,076	2.0	1,059,142	3.0
Minnesota	2,297,918	1.6	1,826,129	1.5	737,448	1.8	572,748	1.6
Mississippi	1,309,653	0.9	2,189,633	1.8	322,259	0.8	213,178	0.6
Missouri	7,612,713	5.4	6,520,208	5.3	2,844,094	6.8	1,580,144	4.4
Montana	101,983	0.1	83,456	0.1	21,684	0.1	29,046	0.1
Nebraska	193,460	0.1	166,959	0.1	68,385	0.2	48,829	0.1
Nevada	127,615	0.1	128,604	0.1	44,061	0.1	44,937	0.1
New Hampshire	678,188	0.5	662,912	0.5	247,454	0.6	217,246	0.6
New Jersey	3,862,142	2.8	3,277,608	2.6	1,510,524	3.6	1,109,657	3.1
New Mexico	492,284	0.5	552,451	0.4	174,516	0.4	219,065	0.6
New York	10,032,702	7.2	9,514,628	7.7	3,394,554	8.1	2,579,844	7.2
North Carolina	1,028,561	0.7	862,850	0.7	357,923	0.9	344,693	1.0
North Dakota	206,535	0.1	181,401	0.1	93,299	0.2	66,208	0.2
Ohio	4,648,327	3.3	2,803,866	2.3	1,121,987	2.7	1,198,729	3.4
Oklahoma	602,378	0.4	535,415	0.4	195,045	0.5	122,285	0.3
Oregon	255,885	0.2	230,454	0.2	115,750	0.3	52,223	0.1
Pennsylvania	4,148,728	3.0	3,252,502	2.6	810,899	1.9	1,200,308	3.4
Rhode Island	431,269	0.3	395,770	0.3	135,418	0.3	127,347	0.4
South Carolina	490,286	0.3	478,024	0.4	182,928	0.4	272,243	0.8
South Dakota	77,546	0.1	46,604	*	15,116	*	20,888	0.1
Tennessee	793,420	0.6	795,834	0.6	166,281	0.4	177,429	0.5
Texas	10,561,556	7.5	8,750,329	7.1	2,410,882	5.8	2,030,779	5.7
Utah	788,794	0.6	880,448	0.7	251,352	0.6	243,087	0.7
Vermont	163,429	0.1	170,066	0.1	67,351	0.2	76,547	0.2
Virginia	6,166,768	4.4	4,604,833	3.7	1,985,492	4.7	1,510,472	4.2
Washington	3,559,364	2.5	2,884,412	2.3	1,073,739	2.6	829,906	2.3
West Virginia	90,336	0.1	72,075	0.1	17,174	*	20,233	0.1
Wisconsin	1,064,501	0.8	959,207	0.8	320,771	0.8	480,921	1.3
Wyoming	124,586	0.1	73,581	0.1	13,578	*	17,833	*

¹ For clarification on the limitations and conditions of coverage, see the introduction.

² All figures include civil functions procurement actions. See Table 5.

Note: An asterisk in the percent column represents a figure of less than 0.05 percent. Percentages may not add up due to rounding.

Table 2. Net Value and Percent Distribution of DOD Military Procurement Actions, by State: FY 1985, FY 1984, and Fourth Quarter FY 1985 and FY 1984¹

(Amounts in Thousands)

STATE	FISCAL YEAR TO DATE				THREE MONTH PERIOD			
	1985 (OCT 84-SEPT 85)		1984 (OCT 83-SEPT 84)		FISCAL YEAR 1985 (JULY-SEPT 1985)		FISCAL YEAR 1984 (JULY-SEPT 1984)	
	AMOUNT	PERCENT	AMOUNT	PERCENT	AMOUNT	PERCENT	AMOUNT	PERCENT
TOTAL, U.S.	\$151,771,621		\$134,661,974		\$45,893,746		\$39,746,917	
NOT DISTRIBUTED BY STATE	13,175,642		12,244,082		4,523,073		4,445,265	
STATE TOTALS	138,595,979	100.0	122,417,892	100.0	41,370,673	100.0	35,301,652	100.0
Alabama	1,378,999	1.0	1,105,627	0.9	411,263	1.0	407,656	1.2
Alaska	518,669	0.4	425,692	0.3	154,790	0.4	160,001	0.5
Arizona	2,000,444	1.4	1,750,876	1.4	697,436	1.7	518,523	1.5
Arkansas	783,768	0.6	653,936	0.5	140,658	0.3	124,287	0.4
California	29,036,422	21.0	28,445,730	23.2	8,490,204	20.5	7,515,307	21.3
Colorado	1,558,852	1.1	1,147,591	0.9	601,651	1.5	399,281	1.1
Connecticut	5,540,829	4.0	5,455,213	4.5	2,291,277	5.5	1,607,994	4.6
Delaware	259,236	0.2	223,601	0.2	33,743	0.1	29,717	0.1
District of Columbia	1,090,448	0.8	807,685	0.7	243,921	0.6	197,946	0.6
Florida	5,229,226	3.8	3,983,777	3.3	1,539,231	3.7	1,452,745	4.1
Georgia	3,461,051	2.5	3,078,398	2.5	630,685	1.5	685,767	1.9
Hawaii	616,884	0.4	516,329	0.4	271,035	0.7	176,457	0.5
Idaho	40,653	*	40,663	*	19,778	*	14,481	*
Illinois	1,585,167	1.1	1,409,666	1.2	549,134	1.3	489,410	1.4
Indiana	3,172,026	2.3	2,516,196	2.1	1,192,495	2.9	810,951	2.3
Iowa	576,271	0.4	384,193	0.3	206,126	0.5	130,390	0.4
Kansas	2,130,180	1.5	2,353,318	1.9	714,340	1.7	548,350	1.6
Kentucky	477,717	0.3	412,612	0.3	131,845	0.3	98,785	0.3
Louisiana	1,939,863	1.4	1,579,394	1.3	127,112	0.3	217,190	0.6
Maine	955,447	0.7	530,257	0.4	108,799	0.3	138,375	0.4
Maryland	4,578,676	3.3	3,988,288	3.3	1,732,684	4.2	1,393,950	3.9
Massachusetts	7,707,010	5.6	7,016,652	5.7	1,765,895	4.3	1,994,703	5.7
Michigan	2,770,422	2.0	2,496,240	2.0	842,196	2.0	1,053,398	3.0
Minnesota	2,277,859	1.6	1,808,913	1.5	729,856	1.8	569,082	1.6
Mississippi	1,212,887	0.9	2,067,852	1.7	283,924	0.7	172,772	0.5
Missouri	7,559,771	5.5	6,454,750	5.3	2,818,402	6.8	1,549,181	4.4
Montana	99,678	0.1	81,001	0.1	20,251	*	27,731	0.1
Nebraska	181,661	0.1	161,175	0.1	63,337	0.2	47,707	0.1
Nevada	127,481	0.1	128,268	0.1	43,983	0.1	44,628	0.1
New Hampshire	677,730	0.5	661,832	0.5	247,270	0.6	216,622	0.6
New Jersey	3,831,795	2.8	3,252,945	2.7	1,493,587	3.6	1,104,794	3.1
New Mexico	489,569	0.4	510,299	0.4	172,135	0.4	187,617	0.5
New York	10,007,004	7.2	9,473,010	7.7	3,382,123	8.2	2,564,391	7.3
North Carolina	994,162	0.7	839,794	0.7	350,527	0.8	335,821	1.0
North Dakota	202,702	0.1	172,672	0.1	90,531	0.2	58,149	0.2
Ohio	4,613,821	3.3	2,772,628	2.3	1,116,755	2.7	1,191,329	3.4
Oklahoma	583,653	0.4	518,963	0.4	186,468	0.5	113,802	0.3
Oregon	194,950	0.1	162,087	0.1	99,184	0.2	42,471	0.1
Pennsylvania	4,122,966	3.0	3,234,037	2.6	801,943	1.9	1,194,047	3.4
Rhode Island	428,167	0.3	395,602	0.3	135,690	0.3	127,306	0.4
South Carolina	464,441	0.3	454,467	0.4	178,210	0.4	267,933	0.8
South Dakota	75,048	0.1	42,756	*	14,891	*	20,080	0.1
Tennessee	749,061	0.5	768,731	0.6	152,866	0.4	167,233	0.5
Texas	10,451,631	7.5	8,609,251	7.0	2,394,914	5.8	1,991,966	5.6
Utah	788,102	0.6	878,071	0.7	251,352	0.6	242,964	0.7
Vermont	161,276	0.1	169,519	0.1	65,770	0.2	76,300	0.2
Virginia	6,151,866	4.4	4,574,442	3.7	1,982,716	4.8	1,490,627	4.2
Washington	3,498,041	2.5	2,820,034	2.3	1,055,299	2.6	818,676	2.3
West Virginia	58,302	*	55,225	*	11,392	*	15,722	*
Wisconsin	1,059,646	0.8	954,187	0.8	317,421	0.8	479,204	1.4
Wyoming	124,449	0.1	73,447	0.1	13,578	*	17,833	0.1

¹ For clarification on the limitations and conditions of coverage, see the introduction.
 Note: An asterisk in the percent column represents a figure of less than 0.05 percent. Percentages may not add up due to rounding.

Table 3. Net Value and Percent Distribution of DOD Military Procurement Actions, by State, According to Defense Component: FY 1985¹

(Amounts in Thousands)

STATE	TOTAL ²		ARMY	NAVY	AIR FORCE	DEFENSE LOGISTICS AGENCY
	AMOUNT	PERCENT				
TOTAL, U.S.	\$151,771,621		\$33,448,880	\$50,975,691	\$50,799,467	\$12,637,239
NOT DISTRIBUTED BY STATE	13,175,642		3,478,427	3,411,679	3,183,844	2,867,916
STATE TOTALS	138,595,979	100.0	29,970,453	47,564,012	47,615,623	9,769,323
Alabama	1,378,999	1.0	744,378	217,840	247,986	150,453
Alaska	518,669	0.4	162,131	82,100	148,579	105,817
Arizona	2,000,444	1.4	559,603	465,865	813,033	24,065
Arkansas	783,768	0.6	425,732	259,403	55,501	43,132
California	29,036,422	21.0	5,033,501	9,383,076	12,635,824	1,373,708
Colorado	1,558,852	1.1	244,549	96,140	1,093,475	48,216
Connecticut	5,540,829	4.0	1,461,418	2,701,683	1,254,640	117,741
Delaware	259,236	0.2	18,646	13,663	34,415	192,393
District of Columbia	1,090,448	0.8	98,790	696,565	46,072	68,754
Florida	5,229,226	3.8	1,857,486	968,658	2,087,417	145,434
Georgia	3,461,051	2.5	540,568	238,125	2,532,930	141,454
Hawaii	616,884	0.4	245,967	152,782	59,939	145,597
Idaho	40,653	*	8,911	2,521	18,237	10,849
Illinois	1,585,167	1.1	429,349	225,076	537,794	343,111
Indiana	3,172,026	2.3	1,854,840	410,182	698,375	200,381
Iowa	576,271	0.4	173,227	93,021	166,555	143,225
Kansas	2,130,180	1.5	409,819	57,041	1,640,284	22,200
Kentucky	477,717	0.3	180,837	25,341	19,361	251,749
Louisiana	1,939,863	1.4	202,318	1,396,162	40,429	300,468
Maine	955,447	0.7	60,203	831,339	38,309	25,459
Maryland	4,578,676	3.3	614,510	1,758,806	1,479,457	177,488
Massachusetts	7,707,010	5.6	2,356,450	2,859,208	2,182,677	162,766
Michigan	2,770,422	2.0	2,054,255	236,284	325,848	143,254
Minnesota	2,277,859	1.6	711,431	1,218,603	260,467	54,136
Mississippi	1,212,887	0.9	154,959	698,864	66,112	291,982
Missouri	7,559,771	5.5	634,609	4,735,420	2,062,785	109,556
Montana	99,678	0.1	39,338	1,992	20,088	38,229
Nebraska	181,661	0.1	62,385	2,115	75,799	35,472
Nevada	127,481	0.1	43,466	15,230	60,656	3,068
New Hampshire	677,730	0.5	111,610	371,928	142,413	20,890
New Jersey	3,831,795	2.8	693,333	1,474,228	1,185,172	281,513
New Mexico	489,569	0.4	140,841	51,150	256,958	20,664
New York	10,007,004	7.2	623,926	5,932,307	2,607,704	436,700
North Carolina	994,162	0.7	375,317	312,110	96,743	166,003
North Dakota	202,702	0.1	80,185	47,769	41,194	33,089
Ohio	4,613,821	3.3	652,854	546,691	3,192,269	211,094
Oklahoma	583,653	0.4	231,112	23,532	221,810	106,675
Oregon	194,950	0.1	35,986	58,115	45,733	40,297
Pennsylvania	4,122,966	3.0	1,305,147	1,635,084	656,094	440,135
Rhode Island	428,167	0.3	30,973	324,315	3,631	55,757
South Carolina	464,441	0.3	178,375	175,990	53,611	50,966
South Dakota	75,048	0.1	50,370	438	17,478	6,762
Tennessee	749,061	0.5	304,332	37,310	268,612	136,958
Texas	10,451,631	7.5	1,583,959	1,914,814	4,535,689	2,384,402
Utah	788,102	0.6	88,789	35,644	547,405	76,259
Vermont	161,276	0.1	28,112	63,625	64,752	4,106
Virginia	6,151,866	4.4	1,114,158	3,747,524	499,174	156,320
Washington	3,498,041	2.5	304,498	762,810	2,317,843	80,658
West Virginia	58,302	*	6,677	27,694	2,466	20,308
Wisconsin	1,059,646	0.8	600,473	177,670	137,346	109,938
Wyoming	124,449	0.1	45,750	159	18,482	60,032

¹ For clarification on the limitations and conditions of coverage, see the introduction.

² Total includes all departments shown, plus other Defense agencies.

Note: An asterisk in the percent column represents a figure of less than 0.05 percent. Percentages may not add up due to rounding.

Table 4. Net Value and Percent Distribution of DOD Military Procurement Actions, by State: FY 1985, FY 1984, and FY 1983¹

(Amounts in Thousands)

STATE	FISCAL YEAR 1985		FISCAL YEAR 1984		FISCAL YEAR 1983	
	AMOUNT	PERCENT	AMOUNT	PERCENT	AMOUNT	PERCENT
TOTAL, U.S.	\$151,771,621		\$134,661,974		\$129,942,322	
NOT DISTRIBUTED BY STATE	13,175,642		12,244,082		12,904,927	
STATE TOTALS	138,595,979	100.0	122,417,892	100.0	117,037,395	100.0
Alabama	1,378,999	1.0	1,105,627	0.9	1,100,093	0.9
Alaska	518,669	0.4	425,692	0.3	367,795	0.3
Arizona	2,000,444	1.4	1,750,876	1.4	1,350,698	1.2
Arkansas	783,768	0.6	653,936	0.5	571,903	0.5
California	29,036,422	21.0	28,445,730	23.2	26,299,154	22.5
Colorado	1,558,852	1.1	1,147,591	0.9	999,992	0.9
Connecticut	5,540,829	4.0	5,455,213	4.5	5,126,170	4.4
Delaware	259,236	0.2	223,601	0.2	217,720	0.2
District of Columbia	1,090,448	0.8	807,685	0.7	1,128,445	1.0
Florida	5,229,226	3.8	3,983,777	3.3	4,597,446	3.9
Georgia	3,461,051	2.5	3,078,398	2.5	2,378,152	2.0
Hawaii	616,884	0.4	516,329	0.4	615,083	0.5
Idaho	40,653	*	40,663	*	34,651	*
Illinois	1,585,167	1.1	1,409,666	1.2	1,437,783	1.2
Indiana	3,172,026	2.3	2,516,196	2.1	2,115,396	1.8
Iowa	576,271	0.4	384,193	0.3	392,446	0.3
Kansas	2,130,180	1.5	2,353,318	1.9	1,564,331	1.3
Kentucky	477,717	0.3	412,612	0.3	398,070	0.3
Louisiana	1,939,863	1.4	1,579,394	1.3	1,211,396	1.0
Maine	955,447	0.7	530,257	0.4	403,079	0.3
Maryland	4,578,676	3.3	3,988,288	3.3	3,522,823	3.0
Massachusetts	7,707,010	5.6	7,016,652	5.7	6,315,296	5.4
Michigan	2,770,422	2.0	2,496,240	2.0	1,737,606	1.5
Minnesota	2,277,859	1.6	1,808,913	1.5	1,584,025	1.4
Mississippi	1,212,887	0.9	2,067,852	1.7	1,683,874	1.4
Missouri	7,559,771	5.5	6,454,750	5.3	5,560,829	4.8
Montana	99,678	0.1	81,001	0.1	106,060	0.1
Nebraska	181,661	0.1	161,175	0.1	152,411	0.1
Nevada	127,481	0.1	128,268	0.1	158,353	0.1
New Hampshire	677,730	0.5	661,832	0.5	540,263	0.5
New Jersey	3,831,795	2.8	3,252,945	2.7	2,622,405	2.2
New Mexico	489,569	0.4	510,299	0.4	447,272	0.4
New York	10,007,004	7.2	9,473,010	7.7	9,601,163	8.2
North Carolina	994,162	0.7	839,794	0.7	767,452	0.7
North Dakota	202,702	0.1	172,672	0.1	132,244	0.1
Ohio	4,613,821	3.3	2,772,628	2.3	3,325,167	2.8
Oklahoma	583,653	0.4	518,963	0.4	596,159	0.5
Oregon	194,950	0.1	162,087	0.1	138,944	0.1
Pennsylvania	4,122,966	3.0	3,234,037	2.6	3,288,771	2.8
Rhode Island	428,167	0.3	395,602	0.3	380,504	0.3
South Carolina	464,441	0.3	454,467	0.4	353,731	0.3
South Dakota	75,048	0.1	42,756	*	32,450	*
Tennessee	749,061	0.5	768,731	0.6	791,176	0.7
Texas	10,451,631	7.5	8,609,251	7.0	8,103,777	6.9
Utah	788,102	0.6	878,071	0.7	718,975	0.6
Vermont	161,276	0.1	169,519	0.1	179,763	0.2
Virginia	6,151,866	4.4	4,574,442	3.7	7,052,814	6.0
Washington	3,498,041	2.5	2,820,034	2.3	3,935,487	3.4
West Virginia	58,302	*	55,225	*	89,288	0.1
Wisconsin	1,059,646	0.8	954,187	0.8	769,642	0.7
Wyoming	124,449	0.1	73,447	0.1	38,868	*

¹ For clarification on the limitations and conditions of coverage, see the introduction.
 Note: An asterisk in the percent column represents a figure of less than 0.05 percent. Percentages may not add up due to rounding.

Table 5. Net Value and Percent Distribution of DOD Civil Functions Procurement Actions, by State: FY 1985, FY 1984, and FY 1983^{1,2}

(Amounts in Thousands)

STATE	FISCAL YEAR 1985		FISCAL YEAR 1984		FISCAL YEAR 1983	
	AMOUNT	PERCENT	AMOUNT	PERCENT	AMOUNT	PERCENT
TOTAL, U.S.	\$1,759,822		\$1,844,599		\$1,947,951	
NOT DISTRIBUTED BY STATE	259,520		267,514		241,162	
STATE TOTALS	1,500,302	100.0	1,577,085	100.0	1,706,789	100.0
Alabama	38,943	2.6	26,010	1.6	26,974	1.6
Alaska	31,734	2.1	10,809	0.7	18,634	1.1
Arizona	5,324	0.4	13,365	0.8	9,050	0.5
Arkansas	25,829	1.7	37,796	2.4	56,881	3.3
California	78,144	5.2	74,011	4.7	88,006	5.2
Colorado	4,519	0.3	5,597	0.4	6,942	0.4
Connecticut	2,619	0.2	4,131	0.3	5,178	0.4
Delaware	2,172	0.1	2,737	0.2	1,817	0.1
District of Columbia	13,101	0.9	7,814	0.5	4,972	0.3
Florida	42,013	2.8	49,903	3.2	52,741	3.1
Georgia	59,278	4.0	44,441	2.8	70,949	4.2
Hawaii	9,269	0.6	20,406	1.3	23,892	1.4
Idaho	9,777	0.7	10,133	0.6	14,640	0.9
Illinois	108,227	7.2	66,250	4.2	96,895	5.7
Indiana	4,746	0.3	5,414	0.3	1,765	0.1
Iowa	13,491	0.9	21,084	1.3	14,202	0.8
Kansas	8,754	0.6	8,643	0.5	10,242	0.6
Kentucky	27,794	1.9	35,448	2.2	21,505	1.3
Louisiana	235,508	15.7	275,816	17.5	272,592	16.0
Maine	1,306	0.1	2,095	0.1	1,683	0.1
Maryland	29,430	2.0	24,883	1.6	16,798	1.0
Massachusetts	6,536	0.4	12,233	0.8	12,209	0.7
Michigan	18,580	1.2	13,765	0.9	44,557	2.6
Minnesota	20,059	1.3	17,216	1.1	20,801	1.2
Mississippi	96,766	6.4	121,781	7.7	156,447	9.2
Missouri	52,942	3.5	65,458	4.2	76,690	4.5
Montana	2,305	0.2	2,455	0.2	10,741	0.6
Nebraska	11,799	0.8	5,784	0.4	10,370	0.6
Nevada	134	*	336	*	329	*
New Hampshire	458	*	1,080	0.1	478	*
New Jersey	30,347	2.0	24,663	1.6	17,570	1.0
New Mexico	2,715	0.2	42,152	2.7	15,683	0.9
New York	25,698	1.7	41,618	2.6	33,448	2.0
North Carolina	34,399	2.3	23,056	1.5	18,816	1.1
North Dakota	3,833	0.3	8,729	0.6	4,269	0.3
Ohio	34,506	2.3	31,238	2.0	39,742	2.3
Oklahoma	18,725	1.2	16,452	1.0	15,451	0.9
Oregon	60,935	4.1	69,367	4.3	41,800	2.4
Pennsylvania	25,762	1.7	18,465	1.2	39,935	2.3
Rhode Island	3,102	0.2	168	*	954	0.1
South Carolina	25,845	1.7	23,557	1.5	46,213	2.7
South Dakota	2,498	0.2	3,848	0.2	9,961	0.6
Tennessee	44,359	3.0	27,103	1.7	37,139	2.2
Texas	109,925	7.3	141,078	8.9	125,102	7.3
Utah	692	*	2,377	0.2	3,249	0.2
Vermont	2,153	0.1	547	*	93	*
Virginia	14,902	1.0	30,391	1.9	18,996	1.1
Washington	61,323	4.1	64,378	4.1	50,120	2.9
West Virginia	32,034	2.1	16,850	1.1	32,421	1.9
Wisconsin	4,855	0.3	5,020	0.3	5,716	0.3
Wyoming	137	*	134	*	131	*

¹ For clarification on the limitations and conditions of coverage, see the introduction.

² Data in this table include civil functions procurement actions of the Corps of Engineers, Department of the Army, involving flood control and river and harbor work. (Civil functions procurement actions are also included in the data in Table 1.)

END

FILMED

2-86

DTIC