

AD-A163 612

L(2) STABILITY FOR WEAK SOLUTIONS OF THE NAVIER-STOKES  
EQUATIONS IN  $R^3$ (U) WISCONSIN UNIV-MADISON MATHEMATICS  
RESEARCH CENTER P SECCHI NOV 85 MRC-TSR-2885

1/1

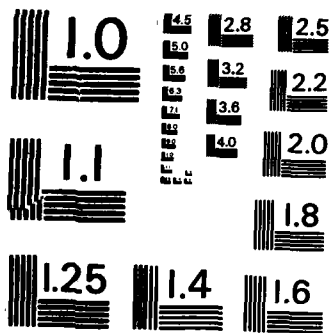
UNCLASSIFIED

DAAG29-80-C-0041

F/G 20/4

NL





MICROCOPY RESOLUTION TEST CHART  
 NATIONAL BUREAU OF STANDARDS-1963-A

2

AD-A163 612

MRC Technical Summary Report #2885

$L^\infty$  STABILITY FOR WEAK SOLUTIONS OF THE  
NAVIER-STOKES EQUATIONS IN  $R^3$

Paolo Secchi

**Mathematics Research Center  
University of Wisconsin—Madison  
610 Walnut Street  
Madison, Wisconsin 53705**

November 1985

(Received October 14, 1985)

**DTIC  
ELECTE  
S FEB 5 1986 D  
B**

**DTIC FILE COPY**

**Approved for public release  
Distribution unlimited**

Sponsored by

U. S. Army Research Office  
P. O. Box 12211  
Research Triangle Park  
North Carolina 27709

86 2 5 030

UNIVERSITY OF WISCONSIN-MADISON  
MATHEMATICS RESEARCH CENTER

$L^2$  STABILITY FOR WEAK SOLUTIONS OF THE  
NAVIER-STOKES EQUATIONS IN  $R^3$

Paolo Secchi\*

Technical Summary Report #2885  
November 1985

ABSTRACT

In this paper we study  $L^2$  stability for weak solutions of the Navier-Stokes system of equations (1), in the whole space  $R^3$ . We assume that it is given a weak solution  $v$  satisfying certain hypotheses (essentially  $v \in L^{2p/p-3}(0; +\infty; L^p)$ ,  $p > 3$ ) and we prove that, to an arbitrarily large perturbation of his initial velocity, it corresponds a weak solution  $u$  such that the  $L^2$ -norm  $\|u(t) - v(t)\|$  converges to zero as time  $t$  tends to infinity.

AMS (MOS) Subject Classifications: 35B35, 35K55, 35Q10, 76D05

Key Words: nonlinear partial differential equations, viscous fluid motions, initial value problem, asymptotic stability, Navier-Stokes equations

Work Unit Number 1 (Applied Analysis)

---

\*Department of Mathematics-University of Trento 38050 POVO (Trento) Italy.

---

Sponsored by the United States Army under Contract No. DAAG29-80-C-0041 and by GNAFA of CNR (Italian National Research Council).

SIGNIFICANCE AND EXPLANATION

We consider the motion of a viscous fluid filling the whole space  $R^3$ , governed by the classical Navier-Stokes equations (1). Existence of global (in time) regular solutions for that system of non-linear partial differential equations is still an open problem. Up to now, the only available global existence theorem (other than for sufficiently small initial data) is that of weak (turbulent) solutions. From both the mathematical and the physical point of view, an interesting property is the stability of such weak solutions. We assume that  $v(t,x)$  is a solution, with initial datum  $v_0(x)$ . We suppose that the initial datum is perturbed and consider one weak solution  $u$  corresponding to the new initial velocity. Then we prove that, due to viscosity, the perturbed weak solution  $u$  approaches in a suitable norm the unperturbed one, as time goes to  $+\infty$ , without smallness assumptions on the initial perturbation.

*infinity*

Accession For	
NTIS GRA&I	<input checked="" type="checkbox"/>
DTIC TAB	<input type="checkbox"/>
Unannounced	<input type="checkbox"/>
Justification	
By _____	
Distribution/	
Availability Codes	
Dist	Avail and/or Special
A-1	




---

The responsibility for the wording and views expressed in this descriptive summary lies with MRC, and not with the author of this report

$L^2$  STABILITY FOR WEAK SOLUTIONS OF THE  
NAVIER-STOKES EQUATIONS IN  $\mathbb{R}^3$

Paolo Secchi\*

Introduction

Consider the initial value problem for the non-stationary Navier-Stokes equations in the whole space  $\mathbb{R}^3$

$$(1) \quad \begin{aligned} u' + (u \cdot \nabla)u - \Delta u + \nabla p &= f && \text{in } Q_T = ]0, T[ \times \mathbb{R}^3, \\ \operatorname{div} u &= 0 && \text{in } Q_T, \\ u|_{t=0} &= u_0 && \text{in } \mathbb{R}^3, \\ \lim_{|x| \rightarrow \infty} u(t, x) &= 0 && \text{for } t \in ]0, T[, \end{aligned}$$

where  $T \in ]0, +\infty[$ ,  $u' = \frac{\partial u}{\partial t}$  and  $(u \cdot \nabla)u = \sum_{i=1}^3 u_i \frac{\partial u}{\partial x_i}$ . Here  $u$  and  $p$  denote, respectively, the unknown velocity and pressure; moreover, the given initial velocity  $u_0$  satisfies  $\operatorname{div} u_0 = 0$  in  $\mathbb{R}^3$ .

We denote by  $L^p = L^p(\mathbb{R}^3)$ ,  $1 < p < \infty$ , the usual Lebesgue space of  $\mathbb{R}^3$ -valued functions on  $\mathbb{R}^3$  and by  $\|\cdot\|_p$  its norm; the  $L^2$ -norm is simply denoted by  $\|\cdot\|$ . Denote by  $H^1 = H^1(\mathbb{R}^3)$  the  $L^2$ -Sobolev space of order 1 and by  $H^{-1}$  the dual space of  $H^1$ . Let  $\mathcal{D}$  be the set of all smooth functions  $\varphi$  with compact support in  $\mathbb{R}^3$  such that  $\operatorname{div} \varphi = 0$ . We denote by  $H$  the  $L^2$ -closure of  $\mathcal{D}$  and by  $V$  the  $H^1$ -closure of  $\mathcal{D}$ . By a weak solution of problem (1) we mean a vector  $u \in L^\infty(0, T; H) \cap L^2(0, T; V)$ , for all  $T > 0$ , such that

$$\int_0^T \int [u \cdot \varphi' + (u \cdot \nabla) \varphi \cdot u + u \cdot \Delta \varphi + f \cdot \varphi] dx dt = - \int u_0 \varphi|_{t=0} dx,$$

for every regular divergence free vector field  $\varphi(t, x)$ , with compact support with respect to the space variables and such that  $\varphi(T, x) = 0$ . The weak solution  $u$  is also assumed to satisfy the following energy inequality:

---

\*Department of Mathematics-University of Trento 38050 POVO (Trento) Italy

---

Sponsored by the United States Army under Contract No. DAAG29-80-C-0041 and by GNAFA of CNR (Italian National Research Council).

$$(2) \quad \|u(t)\|^2 + 2 \int_0^t \|\nabla u\|^2 ds < \|u_0\|^2 + 2 \int_0^t \int f \cdot u \, dx ds ,$$

for all  $t > 0$ . (1)

In [2], Caffarelli-Kohn-Nirenberg construct the so-called suitable weak solutions of (1) by the method of retarded mollification. They consider approximate solutions  $u_N$ ,  $N = 1, 2, \dots$ , such that

$$\begin{aligned} u_N' + (\psi_\delta(u_N) \cdot \nabla) u_N - \Delta u_N + \nabla p_N &= f && \text{in } \Omega, \\ \operatorname{div} u_N &= 0 && \text{in } \Omega_T, \\ u_N|_{t=0} &= u_0 && \text{in } \Omega, \end{aligned}$$

where  $\psi_\delta(u_N)$  is a certain retarded mollification of  $u_N$  ([2]),  $u_0 \in H$ ,

$f \in L^2(0, T; H^{-1})$ . They prove that there exists a subsequence  $u_N$  which converges in  $L^2_{loc}(\mathbb{R}^3 \times (0, T))$  to a weak solution of (1).

A simpler construction of a suitable weak solution is the one of Beirão da Veiga [1], made by considering the approximate problem

$$\begin{aligned} u_\varepsilon' + (u_\varepsilon \cdot \nabla) u_\varepsilon + \varepsilon \Delta^2 u_\varepsilon - \Delta u_\varepsilon + \nabla p_\varepsilon &= f_\varepsilon && \text{in } \Omega_T, \\ \operatorname{div} u_\varepsilon &= 0 && \text{in } \Omega_T, \\ u_\varepsilon|_{t=0} &= u_{0,\varepsilon} && \text{in } \mathbb{R}^3, \end{aligned}$$

where  $u_{0,\varepsilon} \in H^2 \cap V$ ,  $u_{0,\varepsilon} \rightarrow u_0$  in  $L^2$  as  $\varepsilon \rightarrow 0$ ,  $f_\varepsilon \in L^2(0, T; L^2)$  and  $f_\varepsilon \rightarrow f$  in  $L^2(0, T; H^{-1})$  as  $\varepsilon \rightarrow 0$ .

This paper deals with the asymptotic stability in  $L^2$  of weak solutions of problem (1), with respect to perturbations of the initial data. Let  $v_0 \in H$  and  $f \in L^1(0, +\infty; H^{-1}) \cap L^2(0, +\infty; H^{-1})$ . Assume that to  $v_0$  and  $f$  it corresponds a sequence of approximate solutions, constructed as in [1] or in [2], weakly convergent in

(1) For more informations about the weak solutions of the Navier-Stokes equations, see [3], [5], [6], [8].

$L^{2p/p-3}(0, +\infty; L^p)$ ,  $p > 3$ , to a weak solution  $v$ . Since  $v \in L^{2p/p-3}(0, +\infty; L^p)$ , it is the unique weak solution of (1) (see [8]).

We prove the following stability result:

Theorem A. Assume that the above conditions hold and let  $u_0 \in H$ . Then there exists a weak solution  $u$  of problem (1), corresponding to the initial velocity  $u_0$  and the same external force  $f$ , such that

$$(3) \quad \|u(t) - v(t)\| \rightarrow 0 \quad \text{as } t \rightarrow \infty.$$

We prove theorem A for the weak solutions constructed in [1] and in [2]. Thus we show that such solutions, whatever be the initial velocity in  $H$ , converges, as  $t$  goes to infinity, to the given solution  $v$ . Our proof is inspired by the method of Schonbek [7] and Kajikiya-Miyakawa [4] for the study of the asymptotic behaviour of the weak solutions of (1).

In what follows  $C$  denotes various constants depending at most on  $p$  and the data  $u_0, v_0, f$ .

#### Proof of theorem A

The hypotheses on  $u_0$  and  $f$  assure the existence of a global weak solution  $u$  (see [1], [2]). We start by showing a formal proof of property (3).

Let  $(u, p_1), (v, p_2)$  be two solutions corresponding to  $(u_0, f), (v_0, f)$  respectively.

Then the difference  $w = u - v$  satisfies the system

$$(4) \quad \begin{aligned} w' + (u \cdot \nabla)w + (w \cdot \nabla)v - \Delta w + \nabla \pi &= 0 && \text{in } Q_T, \\ \operatorname{div} w &= 0 && \text{in } Q_T, \\ w|_{t=0} &= w_0 && \text{in } \mathbb{R}^3, \end{aligned}$$

where  $\pi = p_1 - p_2$ ,  $w_0 = u_0 - v_0$ . Multiply equation (4) by  $w$  and integrate over  $\mathbb{R}^3$ . Since  $u, v, w$  are divergence free, by integrating by parts we obtain

$$(5) \quad \frac{1}{2} \frac{d}{dt} \|w\|^2 + \int (\nabla w) \cdot w = \int (w \cdot \nabla)w \cdot v.$$

Consider the term on the right. By Hölder's inequality we get

$$(6) \quad \left| \int (w \cdot \nabla) w \cdot v \right| < |w|_r | \nabla w | |v|_p,$$

where  $\frac{1}{r} + \frac{1}{p} = \frac{1}{2}$ . By interpolation we have

$$|w|_r < C | \nabla w |^{3/p} |w|^{1-3/p},$$

hence, from (6), we get

$$\left| \int (w \cdot \nabla) w \cdot v \right| < C | \nabla w |^{1+3/p} |w|^{1-3/p} |v|_p.$$

By introducing this last inequality in (5) and by using the Young's inequality, one obtains

$$(7) \quad \frac{d}{dt} |w|^2 + | \nabla w |^2 < C |w|^2 |v|_p^{\frac{2p}{p-3}}.$$

Consider now the Fourier transform  $\hat{w}$  of  $w$ . Applying Plancherel's theorem to (7) gives

$$(8) \quad \frac{d}{dt} |\hat{w}|^2 + \int |\xi|^2 |\hat{w}|^2 d\xi < C |\hat{w}|^2 |v|_p^{\frac{2p}{p-3}}.$$

We now decompose the frequency domain into two time-dependent subdomains. Let  $S(t)$  be the sphere in  $\mathbb{R}^3$  centered at the origin with radius  $r(t) = [\alpha/(t+1)]^{1/2}$ ,  $\alpha > 1$ . We have

$$\begin{aligned} \int |\xi|^2 |\hat{w}|^2 d\xi &= \int_{S(t)} |\xi|^2 |\hat{w}|^2 d\xi + \int_{S(t)^c} |\xi|^2 |\hat{w}|^2 d\xi > \\ \frac{\alpha}{t+1} \int_{S(t)^c} |\hat{w}|^2 d\xi &= \frac{\alpha}{t+1} |\hat{w}|^2 - \frac{\alpha}{t+1} \int_{S(t)} |\hat{w}|^2 d\xi. \end{aligned}$$

Then from (8) we obtain

$$(9) \quad \frac{d}{dt} |\hat{w}|^2 + \frac{\alpha}{t+1} |\hat{w}|^2 < \frac{\alpha}{t+1} \int_{S(t)} |\hat{w}|^2 d\xi + C |\hat{w}|^2 |v|_p^{\frac{2p}{p-3}}.$$

Now, in order to estimate the first term on the right-hand side, we proceed as in [7] by considering the Fourier transform of equation (4):

$$(10) \quad \hat{w}' + |\xi|^2 \hat{w} = G(\xi, t),$$

where  $G(\xi, t) = -((u \cdot \nabla) w)^\wedge - ((w \cdot \nabla) v)^\wedge - i \xi \pi$ .

The solution of (10) is given by

$$\hat{w}(\xi, t) = e^{-|\xi|^2 t} \hat{w}_0(\xi) + \int_0^t e^{-|\xi|^2(t-s)} G(\xi, s) ds,$$

so we have

$$(11) \quad |\hat{w}(\xi, t)|^2 < 2e^{-2|\xi|^2 t} |\hat{w}_0(\xi)|^2 + 2t \int_0^t e^{-2|\xi|^2(t-s)} |G(\xi, s)|^2 ds.$$

We estimate the single terms of  $G(\xi, t)$ .

By integrating by parts and since  $u$  is divergence free, we have

$$\begin{aligned} |((u \cdot \nabla) \hat{w})| &= \left| \int_{\mathbb{R}^3} \sum_{j=1}^3 \frac{\partial}{\partial x_j} (u_j w) e^{-i\xi \cdot x} dx \right| = \\ & \left| \int_{\mathbb{R}^3} \sum_{j=1}^3 u_j w \xi_j e^{-i\xi \cdot x} dx \right| < |\xi| \|u\| \|w\|. \end{aligned}$$

In a similar way we obtain

$$|((w \cdot \nabla) \hat{v})| < |\xi| \|v\| \|w\|.$$

In order to estimate the pressure term in  $G(\xi, t)$ , take the divergence of equation (4):

$$(12) \quad -\Delta \pi = \sum_{i,j=1}^3 \frac{\partial^2}{\partial x_i \partial x_j} (u_i w_j + w_i v_j).$$

Taking the Fourier transform of (12) gives

$$|\xi|^2 \hat{\pi} = - \sum_{i,j=1}^3 \xi_i \xi_j (u_i w_j + w_i v_j),$$

from which one obtains

$$|\hat{\pi}| < (\|u\| + \|v\|) \|w\|.$$

Then we have

$$(13) \quad \begin{aligned} |G(\xi, t)| &< 2|\xi| (\|u(t)\| + \|v(t)\|) \|w(t)\|, \\ &< 4|\xi| (\|u(t)\|^2 + \|v(t)\|^2), \end{aligned}$$

where we have used

$|w(t)| < |u(t)| + |v(t)|$ . From the energy inequality (2) we have

$$|u(t)|^2 + |v(t)|^2 < C \quad \forall t > 0,$$

where the constant  $C$  is an increasing function of the  $L^2$ -norms of  $u_0, v_0$  and of the  $L^1(0, +\infty; H^{-1})$  and  $L^2(0, +\infty; H^{-1})$ -norms of  $f$ . Thus, from (13), we get

$$(14) \quad |G(\xi, t)| < C|\xi| \quad \forall t > 0.$$

Introducing (14) in (11) and a direct calculation of the integral yield

$$\begin{aligned} |\hat{w}(\xi, t)|^2 &< 2 e^{-2|\xi|^2 t} |\hat{w}_0(\xi)|^2 + Ct(1 - e^{-2|\xi|^2 t}) \\ &< 2 e^{-2|\xi|^2 t} |\hat{w}_0(\xi)|^2 + Ct. \end{aligned}$$

Thus the first term in the right-hand side of (9) is estimated as follows:

$$\begin{aligned} \frac{\alpha}{t+1} \int_{S(t)} |\hat{w}|^2 d\xi &< \frac{2\alpha}{t+1} \int_{S(t)} e^{-2|\xi|^2 t} |\hat{w}_0|^2 d\xi + c \int_{S(t)} d\xi \\ &< \frac{2\alpha}{t+1} \int_{R^3} e^{-2|\xi|^2 t} |\hat{w}_0|^2 d\xi + c(t+1)^{-3/2}, \end{aligned}$$

and from (9) we obtain

$$(15) \quad \begin{aligned} \frac{d}{dt} |w|^2 + \frac{\alpha}{t+1} |w|^2 &< \frac{2\alpha}{t+1} \int_{R^3} e^{-2|\xi|^2 t} |\hat{w}_0|^2 d\xi + c(t+1)^{-3/2} + \\ &+ C|w|^2 |v| \frac{2p}{p-3}. \end{aligned}$$

Multiplying by the integrating factor  $(t+1)^\alpha$  gives

$$\frac{d}{dt} [(t+1)^\alpha \hat{w}_1^2] < 2\alpha(t+1)^{\alpha-1} \int_{\mathbb{R}^3} e^{-2|\xi|^2 t} |\hat{w}_0|^2 d\xi \\ + C(t+1)^{\alpha-3/2} + C_0(t+1)^\alpha |\hat{w}_1|^2 |v|_p^{\frac{2p}{p-3}}.$$

Via the Gronwell inequality we thus obtain

$$(t+1)^\alpha \hat{w}_1^2 < J(v) |\hat{w}_0|^2 + 2\alpha J(v) \int_0^t (\tau+1)^{\alpha-1} \int_{\mathbb{R}^3} e^{-2|\xi|^2 \tau} |\hat{w}_0|^2 d\xi d\tau \\ + CJ(v)(t+1)^{\alpha-1/2},$$

where  $J(v) = \exp(C_0 \int_0^{+\infty} |v(s)|_p^{\frac{2p}{p-3}} ds) < \infty$ .

Finally we have

$$(16) \quad |\hat{w}|^2 < J(v)(t+1)^{-\alpha} |\hat{w}_0|^2 + 2\alpha J(v)(t+1)^{-\alpha} \int_0^t (\tau+1)^{\alpha-1} \int_{\mathbb{R}^3} e^{-2|\xi|^2 \tau} |\hat{w}_0|^2 d\xi d\tau + \\ CJ(v)(t+1)^{-1/2}.$$

The first and third term clearly converge to zero as  $t \rightarrow \infty$ . The same is easily proved for the second term by applying the l'Hopital and Lebesgue theorems and using the fact that  $\hat{w}_0 \in L^2$ .

The same behavior can be proved for the weak solutions constructed in [1] and [2]. In fact, proceeding as above, one can prove inequality (16) for the approximate solutions of [1] and [2]. Then, by passing to the limit, one obtains (16) for such weak solutions, from which one has the behavior at  $t \rightarrow \infty$  (for more detail see [4], [7]).

#### REFERENCES

- [1] H. Beirão da Veiga, "On the suitable weak solutions to the Navier-Stokes equations in the whole space", *J. Math. Pures et Appl.*, 64 (1985), 77-86.
- [2] L. Caffarelli-R. Kohn-L. Nirenberg, "Partial regularity of suitable weak solutions of the Navier-Stokes equations," *Comm. Pure Appl. Math.*, 35 (1982), 771-831.
- [3] Y. Giga, "Weak and strong solutions of the Navier-Stokes initial value problem," *Publ. RIMS Kyoto Univ.*, 13 (1983), 887-910.
- [4] R. Kajikiya-T. Miyakawa, "On  $L^2$  decay of weak solutions of the Navier-Stokes equations in  $\mathbb{R}^n$ ," to appear.
- [5] O. A. Ladyzhenskaja, "The mathematical theory of viscous incompressible flows", Gordon and Breach, New York (1969).
- [6] J. L. Lions, "Quelques méthodes de résolution des problèmes solution des problèmes aux limites non linéaires," Dunod et Gauthier-Villars, Paris (1969).
- [7] M. E. Schonbek, " $L^2$  decay for weak solutions of the Navier-Stokes equations," *Arch. Rat. Mech. Anal.*, 88 (1985), 209-222.
- [8] J. Serrin, "The initial value problem for the Navier-Stokes equations," R.E. Langer ed., University of Wisconsin Press, Madison (1963), 69-98.

REPORT DOCUMENTATION PAGE		READ INSTRUCTIONS BEFORE COMPLETING FORM
1. REPORT NUMBER #2885	2. GOVT ACCESSION NO. AD-A1636	3. RECIPIENT'S CATALOG NUMBER 12
4. TITLE (and Subtitle) $L^2$ STABILITY FOR WEAK SOLUTIONS OF THE NAVIER-STOKES EQUATIONS IN $R^3$		5. TYPE OF REPORT & PERIOD COVERED Summary Report - no specific reporting period
		6. PERFORMING ORG. REPORT NUMBER
7. AUTHOR(s) Paolo Secchi		8. CONTRACT OR GRANT NUMBER(s) DAAG29-80-C-0041
9. PERFORMING ORGANIZATION NAME AND ADDRESS Mathematics Research Center, University of 610 Walnut Street Madison, Wisconsin 53705		10. PROGRAM ELEMENT, PROJECT, TASK AREA & WORK UNIT NUMBERS Work Unit Number 1 - (Applied Analysis)
11. CONTROLLING OFFICE NAME AND ADDRESS U. S. Army Research Office P. O. Box 12211 Research Triangle Park, North Carolina 27709		12. REPORT DATE November 1985
		13. NUMBER OF PAGES 8
14. MONITORING AGENCY NAME & ADDRESS (if different from Controlling Office)		15. SECURITY CLASS. (of this report)  UNCLASSIFIED
		15a. DECLASSIFICATION/DOWNGRADING SCHEDULE
16. DISTRIBUTION STATEMENT (of this Report)  Approved for public release; distribution unlimited.		
17. DISTRIBUTION STATEMENT (of the abstract entered in Block 20, if different from Report)		
18. SUPPLEMENTARY NOTES		
19. KEY WORDS (Continue on reverse side if necessary and identify by block number)  nonlinear partial differential equations, viscous fluid motions, initial value problem, asymptotic stability, Navier-Stokes equations		
20. ABSTRACT (Continue on reverse side if necessary and identify by block number)  In this paper we study $L^2$ stability for weak solutions of the Navier- Stokes system of equations (1), in the whole space $R^3$ . We assume that it is given a weak solution $v$ satisfying certain hypotheses (essentially $v \in L^{2p/p-3}(0; +\infty; L^p)$ , $p > 3$ ) and we prove that, to an arbitrarily large per- turbation of his initial velocity, it corresponds a weak solution $u$ such that the $L^2$ -norm $\ u(t) - v(t)\ $ converges to zero as time $t$ tends to infinity.		

END

FILMED

3 - 86

DTIC