

AD-A165 199

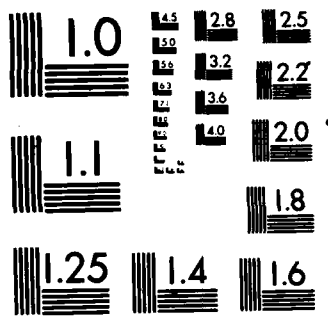
CIVILIAN MANPOWER STATISTICS FIRST QUARTER FY-86 (H)  
WASHINGTON HEADQUARTERS SERVICES (DOD) DC DIRECTORATE  
FOR INFORMATION OPERATIONS AND REPORTS 31 DEC 83  
DIOR/M04-86/01 F/G 3/9

1/1

UNCLASSIFIED

NL

END  
DATE  
FILMED  
J R 7



MICROCOPY RESOLUTION TEST CHART  
NATIONAL BUREAU OF STANDARDS-1963-A

A165-199

Department of Defense

M04

# CIVILIAN MANPOWER STATISTICS

*First Quarter, FY-86.*

DECEMBER 1985

ADA165199

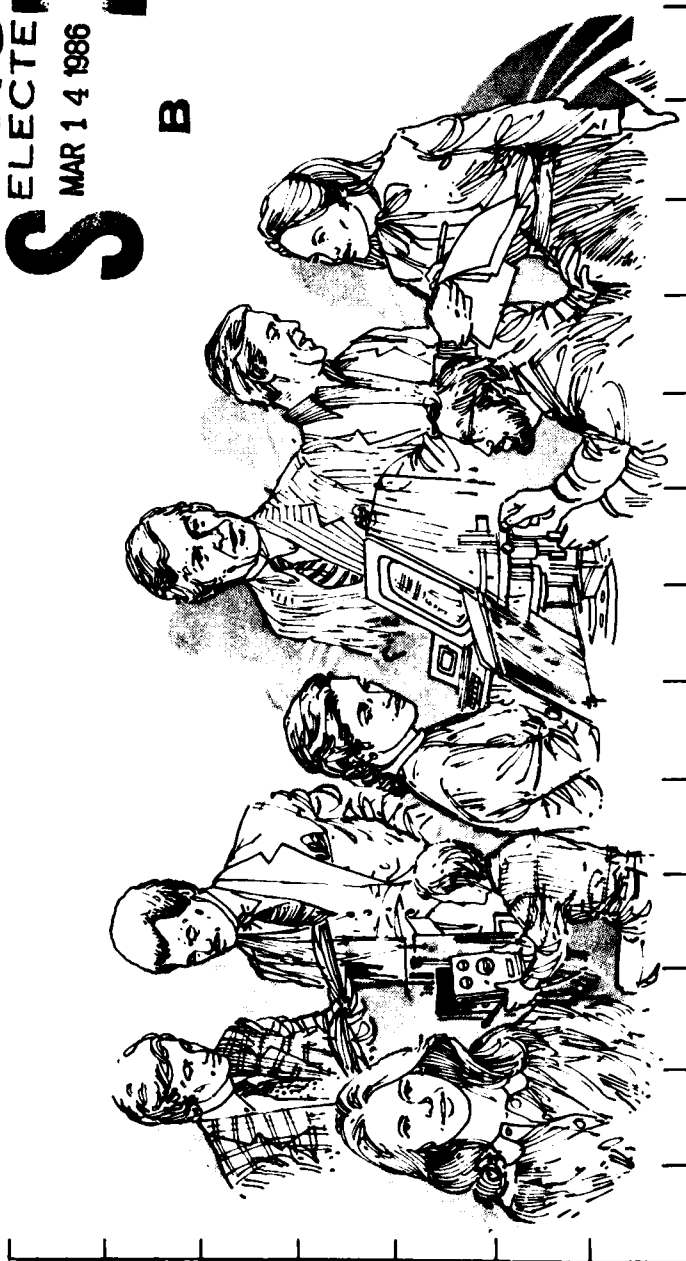


OSD

FORM 1-78 (REV. 1-78) USE PREVIOUS EDITIONS

DTIC  
ELECTE  
S MAR 14 1986

B



Wm

DISTRIBUTION STATEMENT A  
Approved for public release  
Distribution Unlimited

86 3 14 025

Department of Defense  
**CIVILIAN MANPOWER STATISTICS**  
December 31, 1985

*Issued Quarterly by  
Washington Headquarters Services  
Directorate for Information  
Operations and Reports (DIOR)*

FOR SALE BY THE SUPERINTENDENT OF DOCUMENTS  
U.S. GOVERNMENT PRINTING OFFICE  
WASHINGTON, D.C. 20542

*DTIC and NTIS identification number for this publication is DIOR/M04-86/01.*

## FOREWORD

*Civilian Manpower Statistics (CMS)* is a quarterly publication prepared by the Washington Headquarters Services, Directorate for Information Operations and Reports (WHS/DIOR) of the Office of the Secretary of Defense.

CMS provides statistical information on the civilian work force of the Department of Defense (DoD), with the exception of personnel of the National Security Agency, the Defense Intelligence Agency, and personnel paid from nonappropriated funds. It is produced primarily from a computerized data base developed and maintained by WHS/DIOR from monthly information provided to the Office of Personnel Management on SF-113A, Monthly Report of Federal Civilian Employment.

## TABLE OF CONTENTS

	<u>Page</u>
Table 1 DoD Civilian Employment, by Function and Employment Status, According to Defense Component: December 31, 1985.....	1
Table 2 Trends in DoD Civilian Employment Subject to OMB Ceiling, by Function, Employment Status and Defense Component .....	2
Figure 1 Trends in DoD Civilian Employment/FY82 - FY85, Military and Civil Functions, Direct Hires .....	3
Figure 2 Trends in DoD Civilian Employment/FY82 - FY85, Military and Civil Functions, Indirect Hires .....	4
Table 3 DoD Direct Hire Civilian Personnel Subject to OMB Ceilings, by Function and Defense Component .....	5
Table 4 DoD Direct and Indirect Hire Civilian Personnel, by Component (Excluding the Military Departments), According to Type: December 31, 1985 .....	6
Table 5 DoD Direct Hire Civilian Personnel, by Type, According to Defense Component: December 31, 1985 .....	7
Table 6 DoD Civilian Personnel, by Location and Type, According to Defense Component: December 31, 1985 .....	8
Table 7 DoD Indirect Hire Civilian Personnel, by Country, According to Defense Component: December 31, 1985 .....	9
GLOSSARY .....	10

TABLE 1

DoD Civilian Employment, by Function and Employment Status,  
According to Defense Component: December 31, 1985

FUNCTION/EMPLOYMENT STATUS	TOTAL DoD a/	ARMY	NAVY b/	AIR FORCE	OTHER DoD ORGANIZATIONS c/
<b>MILITARY FUNCTIONS</b>					
OMB Ceiling Employment	1,143,971	424,823	358,442	269,185	91,521
Direct Hire	1,057,273	363,937	347,853	255,676	89,810
Indirect Hire	86,698	60,886	10,589	13,512	1,711
Total Employment	1,154,554	427,764	362,783	271,323	92,684
Direct Hire	1,067,856	366,878	352,194	257,811	90,973
Indirect Hire	86,698	60,886	10,589	13,512	1,711
<b>CIVIL FUNCTIONS (ALL DIRECT HIRE)</b>					
OMB Ceiling Employment	28,946	28,943	0	3	0
Total Employment	30,311	30,308	0	3	0
<b>TOTAL MILITARY AND CIVIL FUNCTIONS</b>					
OMB Ceiling Employment	1,172,917	453,766	358,442	269,188	91,521
Direct Hire	1,086,219	392,880	347,853	255,676	89,810
Indirect Hire	86,698	60,886	10,589	13,512	1,711
Total Employment	1,184,865	458,072	362,783	271,326	92,684
Direct Hire	1,098,167	397,186	352,194	257,814	90,973
Indirect Hire	86,698	60,886	10,589	13,512	1,711

a/ Included in Total Employment but excluded from Office of Management and Budget (OMB) Ceiling Employment are employees exempt from OMB ceiling control. Refer to Office of Personnel Management Federal Personnel Manual System Supplement 298-2, Subchapter 53, for a delineation of employment exempt from ceiling control.

b/ Includes Marine Corps civilian personnel.

c/ See the Glossary for a list of Other DoD Organizations.

TABLE 2

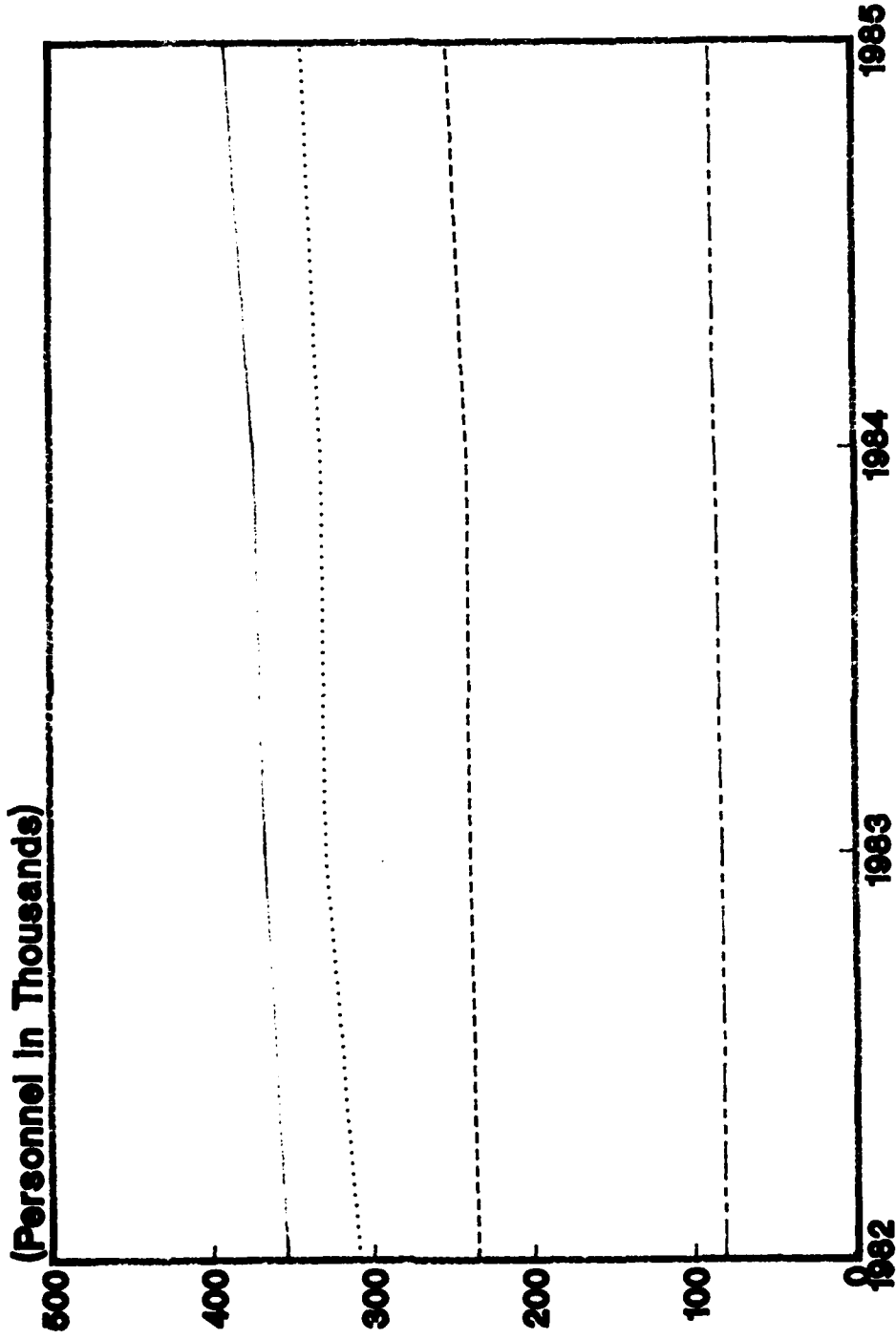
Trends in DoD Civilian Employment Subject to OMB Ceiling,  
By Function, Employment Status, and Defense Component

FUNCTION/COMPONENT EMPLOYMENT STATUS	END STRENGTHS, LAST 4 FISCAL YEARS				LAST 3 MONTHS		
	30 SEP 82	30 SEP 83	30 SEP 84	30 SEP 85	31 OCT 85	30 NOV 85	31 DEC 85
<b>MILITARY FUNCTIONS</b>	1,029,854	1,067,824	1,089,585	1,129,745	1,135,943	1,139,854	1,143,971
DIRECT HIRE <sup>a/</sup>	947,061	983,644	1,004,488	1,043,240	1,049,585	1,053,349	1,057,273
INDIRECT HIRE <sup>b/</sup>	82,793	84,180	85,097	86,505	86,358	86,505	86,698
<b>ARMY</b>	379,316	392,346	405,084	421,780	422,546	423,296	424,823
DIRECT HIRE	322,057	333,722	345,194	360,887	361,738	362,547	363,937
INDIRECT HIRE	57,259	58,624	59,890	60,893	60,808	60,749	60,886
<b>NAVY</b>	319,554	339,552	342,851	353,501	357,499	358,275	358,442
DIRECT HIRE	308,885	328,907	332,468	343,061	347,097	347,752	347,853
INDIRECT HIRE	10,669	10,645	10,383	10,440	10,402	10,523	10,589
<b>AIR FORCE</b>	248,508	252,330	253,884	265,018	265,946	267,589	269,185
DIRECT HIRE	235,456	239,367	240,903	251,550	252,501	254,065	255,673
INDIRECT HIRE	13,052	12,963	12,981	13,468	13,445	13,524	13,512
<b>OTHER DoD ORGANIZATIONS <sup>c/</sup></b>	82,476	83,596	87,766	89,446	89,952	90,694	91,521
DIRECT HIRE	80,663	81,648	85,923	87,742	88,249	88,985	89,810
INDIRECT HIRE	1,813	1,948	1,843	1,704	1,703	1,709	1,711
<b>CIVIL FUNCTIONS <sup>a/</sup></b>	31,573	32,823	28,974	30,029	30,049	29,746	28,946
(ALL DIRECT HIRE)	31,569	32,819	28,972	30,026	30,046	29,743	28,943
Army	4	4	2	3	3	3	3
Air Force							
<b>TOTAL MILITARY AND CIVIL FUNCTIONS</b>	1,081,427	1,100,647	1,118,559	1,159,774	1,165,992	1,169,600	1,172,917
DIRECT HIRE <sup>a/</sup>	978,634	1,016,467	1,033,462	1,073,269	1,079,634	1,083,095	1,086,219
INDIRECT HIRE <sup>b/</sup>	82,793	84,180	85,097	86,505	86,358	86,505	86,698

a/ As reported officially to the Office of Personnel Management  
b/ Foreign Nationals supporting U.S. Military Forces overseas under contracts or agreements with foreign governments  
c/ See Glossary for a list of Other DoD Organizations

**TRENDS IN DoD CIVILIAN EMPLOYMENT/FY82 - FY85**  
**MILITARY AND CIVIL FUNCTIONS**

Army                      Navy                      Air Force                      Other DoD Orgs.



**FIGURE 1 - Direct Hires**

# TRENDS IN DoD CIVILIAN EMPLOYMENTS/FY82 - FY85

## MILITARY AND CIVIL FUNCTIONS

Other DoD Orgs.

Air Force

Navy

Army

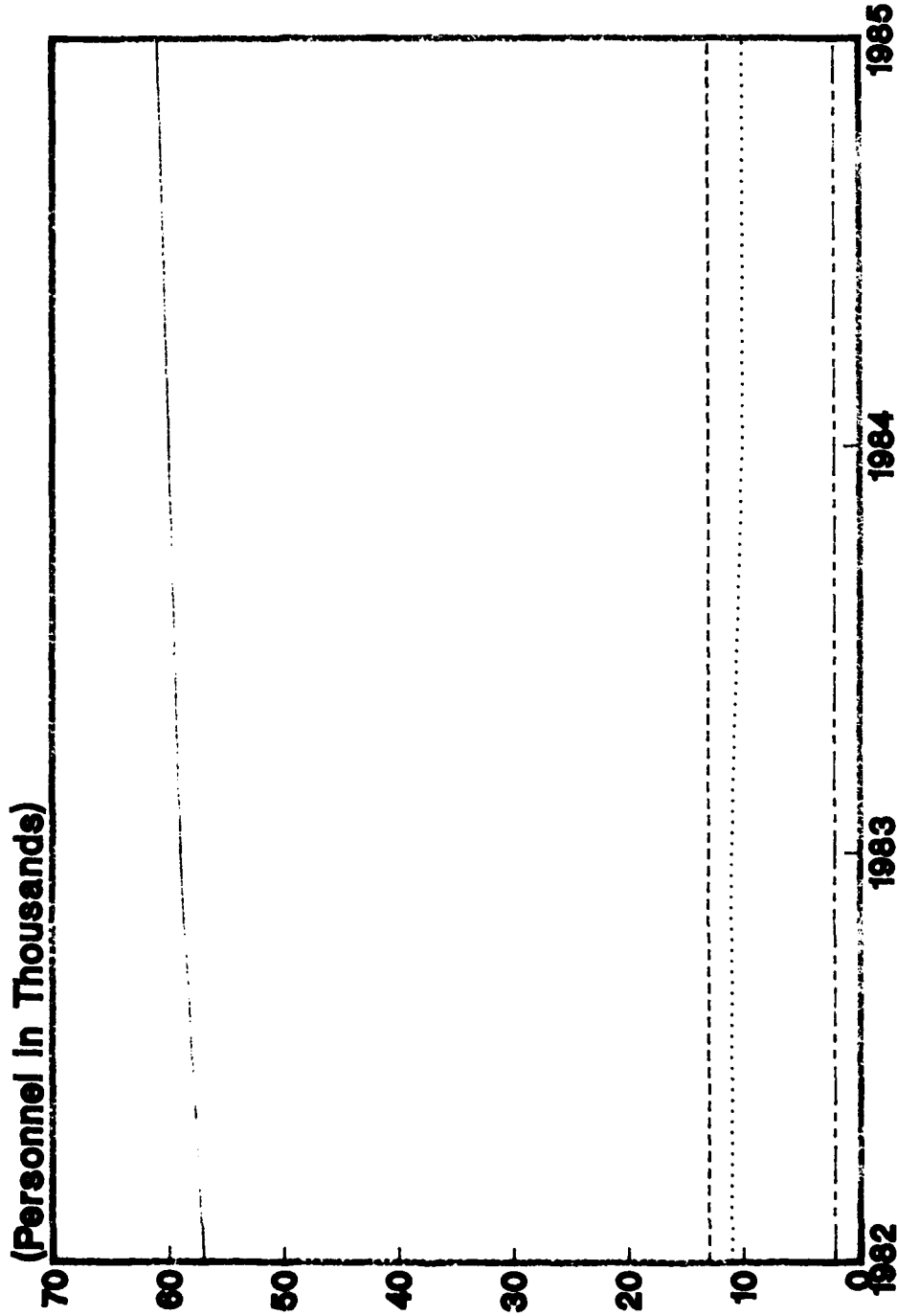


FIGURE 2 - Indirect Hires

TABLE 3

DoD Direct Hire Civilian Personnel Subject to OMB Ceiling,  
by Function and Defense Component

FUNCTION/COMPONENT	TOTAL EMPLOYMENT				FULL-TIME WITH PERMANENT APPOINTMENTS			
	31 OCT 85	30 NOV 85	31 DEC 85	PROGRAMMED STRENGTH 30 SEP 85	31 OCT 85	30 NOV 85	31 DEC 85	31 DEC 85
<b>MILITARY FUNCTIONS</b>	1,049,585	1,053,349	1,057,273	1,039,150	921,765	923,453	925,501	
Army	361,738	362,547	363,937	359,078	305,875	306,340	306,648	
Navy	347,097	347,752	347,853	342,420	306,506	306,768	307,295	
Air Force	252,501	254,065	255,679	250,400	228,338	228,802	229,720	
OSD & Organizations Serviced by OSD a/	3,848	3,929	3,945	3,810	3,690	3,712	3,732	
Defense Communications Agency	1,926	1,907	1,954	1,885	1,815	1,805	1,823	
Defense Contract Audit Agency	4,643	4,639	4,652	4,636	4,566	4,562	4,563	
Defense Investigative Service	3,605	3,678	3,758	3,520	3,361	3,367	3,394	
Defense Logistics Agency	51,316	51,771	52,051	50,678	49,041	49,517	49,703	
Defense Mapping Agency	9,141	9,135	9,154	9,076	8,924	8,915	8,921	
Defense Nuclear Agency	9,747	9,747	9,765	9,748	8,670	8,670	8,681	
Department of Defense	12,227	12,363	12,702	12,104	8,318	8,318	8,340	
Dependents Schools								
Uniformed Services University of the Health Sciences	796	816	829	795	665	677	691	
<b>CIVIL FUNCTIONS</b>	30,049	29,746	28,946	N/A	27,140	27,090	26,657	
Army	30,046	29,743	28,943		27,137	27,087	26,654	
Air Force	3	3	3		3	3	3	
<b>TOTAL MILITARY AND CIVIL FUNCTIONS</b>	1,079,634	1,083,095	1,086,219	N/A	948,905	950,543	952,158	

a/ See the Glossary for a list of OSD and Organizations Serviced by OSD.

TABLE 4

DoD Direct and Indirect Hire Civilian Personnel by Component,  
According to Type (Excluding the Military Departments)

31 DEC 85

DEFENSE COMPONENT	TOTAL	DIRECT HIRE CIVILIANS	INDIRECT HIRE CIVILIANS
TOTAL	92,684	90,973	1,711
OSD And Organizations Serviced by OSD a/	4,014	4,000	14
Defense Communications Agency	2,027	2,017	10
Defense Contract Audit Agency	4,700	4,695	5
Defense Investigative Service	3,782	3,782	0
Defense Logistics Agency	53,800	52,903	897
Defense Mapping Agency	9,266	9,264	2
Defense Nuclear Agency	772	772	0
Department of Defense Dependents Schools	13,485	12,702	783
Uniformed Services University of the Health Sciences	838	838	0

a/ See the Glossary for a list of OSD and Organizations Serviced by OSD.

TABLE 5

DoD Direct Hire Civilian Personnel, by Type,  
According to Defense Component: December 31, 1985

TYPE OF PERSONNEL	TOTAL DoD	ARMY	NAVY	AIR FORCE	OTHER DoD ORGANIZATIONS a/
<b>TOTAL</b>	1,098,167	397,186	352,194	257,814	90,973
<b>BY STATUS</b>					
Full-Time	1,064,909	383,244	344,519	250,705	86,441
Part-Time	27,761	11,135	6,788	6,113	3,725
Intermittent	5,497	2,807	887	996	807
<b>BY CAREER SERVICE CATEGORY</b>					
Competitive	909,145	315,551	308,722	212,409	72,463
Excepted and SES	189,022	81,635	43,472	45,405	18,510
<b>BY TYPE OF APPOINTMENT</b>					
Permanent	964,894	338,712	310,406	232,839	82,937
Temporary/Indefinite	133,273	58,474	41,788	24,975	8,036
<b>BY CITIZENSHIP</b>					
U.S. Citizens	1,056,211	380,316	335,557	249,849	90,489
Non-Citizens	41,956	16,870	16,637	7,965	484
<b>BY LABOR CATEGORY</b>					
Salaries	739,776	280,264	214,018	165,715	79,779
Wage Board	358,391	116,922	138,176	92,099	11,194

a/ See the Glossary for a list of Other DoD Organizations.

TABLE 6

DoD Direct Hire Civilian Personnel, by Location/Type,  
According to Defense Component: December 31, 1985 a/

LOCATION/TYPE OF PERSONNEL	TOTAL DoD	ARMY	NAVY	AIR FORCE	OTHER DoD ORGANIZATIONS b/
<b>WORLDWIDE TOTAL</b>	1,098,167	397,186	352,194	257,814	90,973
<b>UNITED STATES</b>	995,922	350,009	326,672	241,678	77,563
By Location					
Washington, D.C.	88,764	29,212	39,004	6,421	14,127
Remainder of U. S.	907,158	320,797	287,668	235,257	63,436
By Labor Category					
Salaries	674,349	254,427	202,421	150,916	66,585
Wage Board	321,573	95,582	124,251	90,762	10,978
By Citizenship					
U. S. Citizens	995,277	349,620	326,503	241,652	77,502
Non-Citizens	645	389	169	26	61
<b>U. S. TERRITORIES</b>	7,567	1,218	5,303	972	74
By Labor Category					
Salaries	3,747	828	2,431	424	64
Wage Board	3,820	390	2,872	548	10
By Citizenship					
U. S. Citizens	7,498	1,217	5,253	972	56
Non-Citizens	69	1	50	0	18
<b>FOREIGN COUNTRIES</b>	94,678	45,959	20,219	15,164	13,336
By Labor Category					
Salaries	61,680	25,009	9,166	14,375	13,130
Wage Board	32,998	20,950	11,053	7,789	206
By Citizenship					
U. S. Citizens	53,436	29,479	3,801	7,225	12,931
Non-Citizens	41,242	16,480	16,418	7,939	405

a/ Includes personnel not subject to Office of Management and Budget (OMB) ceiling control.  
b/ See the Glossary for a list of the Other DoD Organizations.  
c/ The Washington, D.C., Standard Metropolitan Statistical Area (SMSA) consists of the District of Columbia; Montgomery, Prince Georges, Charles, Calvert, and Frederick counties in Maryland; Alexandria, Fairfax, Falls Church, Manassas, Manassas Park cities, and Arlington, Fairfax, Loudoun, Stafford, and Prince William counties in Virginia.

TABLE 7

DoD Indirect Hire Civilian Personnel, by Country,  
According to Defense Component: December 31, 1985

COUNTRY	TOTAL DoD	ARMY	NAVY	AIR FORCE	OTHER DoD ORGANIZATIONS <sup>a</sup>
TOTAL	86,682	60,886	10,574	13,512	1,710
BELGIUM	958	799	0	159	0
COLOMBIA	1	0	0	0	1
GERMANY	60,623	53,047	0	6,159	1,417
GREECE	550	14	127	392	17
GUAM	4	0	4	0	0
ITALY	4	0	4	0	0
JAPAN	17,364	3,421	9,224	4,550	169
KOREA	3,261	3,261	0	0	0
NETHERLANDS	421	344	0	77	0
PHILIPPINES	6	0	6	0	0
SPAIN	2,075	0	1,142	847	86
UNITED KINGDOM	1,415	0	67	1,328	20

<sup>a/</sup> See the Glossary for a list of Other DoD Organizations.

## GLOSSARY

Civilian Functions. Functions primarily associated with the civil works program of the Army Corps of Engineers. This program encompasses planning, programming, designing, constructing, and operating Federal water resource projects for navigation, flood control, hydroelectric power, water supply, recreation, and related activities. Civil functions also includes cemeterial workers (Army) and several conservation management employees (Air Force).

Competitive Service. All civil service positions in the Executive Branch, except:

1. Positions which are specifically exempted from the competitive service by or under statute;
2. Positions which appointments are made by nomination for confirmation by the Senate, unless the Senate otherwise directs or when specifically included in the competitive service by statute;
3. Positions in the Senior Executive Service.

Also includes civil service positions not in the Executive Branch which are specifically included in the competitive service by statute.

Direct Hire Civilians. Employees hired directly by an agency of the Department of Defense (DoD). Included are foreign nations hired by DoD to support DoD activities in their home countries.

DoD. Department of Defense.

Exempted Service. All positions in the Executive Branch of the Federal government (except Senior Executive Service positions) which are specifically excepted from the competitive service by or pursuant to a statute, the President, or the Office of Personnel Management.

Full-Time Employees. Employees who are regularly scheduled to work the number of hours and days in the administrative work week for their employment group or class. (Usually 5 days of 8 hours each.)

Indirect Hire Civilians. Foreign nationals assigned to support U.S. forces through contracts or agreements with foreign governments (or agencies thereof). These personnel are employees of the foreign governments involved.

Intermittent Employees. Employees who are employed with no prescheduled tour of duty (i.e., employed on irregular or occasional basis).

Military Functions. Activities normally associated with the uniformed services.

OMB Ceiling Employment. Employees subject to the Office of Management and Budget (OMB) ceilings established to administer Presidential employment ceiling limitations. Refer to the Office of Personnel Management System Supplement 298-2, Subchapter 53, for a delineation of employment exempt from ceiling control.

#### OTHER DoD ORGANIZATIONS

- \*Office of the Secretary of Defense (OSD)
- \*Joint Chiefs of Staff (JCS)
- \*Inspector General of the Department of Defense

#### Department of Defense Agencies:

- \*Defense Advanced Research Projects Agency (DARPA)
- Defense Communications Agency (DCA)
- Defense Contract Audit Agency (DCAA)
- Defense Investigative Service (DIS)
- \*Defense Legal Services Agency (DLSA)
- Defense Logistics Agency (DLA)
- Defense Mapping Agency (DMA)
- Defense Nuclear Agency (DNA)
- \*Defense Security Assistance Agency (DSAA)
- \*Strategic Defense Initiative Organization

NOTE: \*Organizations serviced by OSD.

Department of Defense Field Activities:

- \*American Forces Information Service (AFIS)
- \*Defense Information Services Activity (DISA)
- \*Defense Medical Systems Support Center (DMSSC)
- \*Defense Technology Security Administration (DTSA)
- \*Department of Defense Dependents Schools (DODDS) (Headquarters Only)
- \*Office of Civilian Health and Medical Program Office (OCHAMPUS)
- \*Office of Economic Adjustment (OEA)
- \*Washington Headquarters Services (WHS)

\*U.S. Court of Military Appeals

Uniformed Services University of the Health Sciences (USUHS)

Part-Time Employees. Employees who are regularly scheduled for a prearranged tour of duty which is less than the specified number of hours or days worked by full-time employees in the same employment group or class.

Permanent Appointments. Permanent appointments are defined within each type of service as follows:

1. **COMPETITIVE SERVICE** - Employees serving under career appointments who are serving or who have completed their initial appointment probation or who are not required to serve an initial appointment probation. Also includes employees with career-conditional appointments.
2. **EXCEPTED SERVICE** - Employees whose appointments carry no restrictions or conditions, such as conditional appointments indefinite or specific time limitations, or trial periods. Based on tenure, can include employees serving trial periods or those whose tenure is equivalent to career-conditional in the competitive service.

*NOTE: \*Organizations serviced by OSD*

3. SENIOR EXECUTIVE SERVICE (SES) - All SES employees except those serving under "limited term" and "limited emergency" appointments.

Salariated Employees. Primarily employees occupying positions subject to the Classification Act of 1949, as amended, and a limited number of other employees whose compensation is established by other legislation, Executive Order, or administrative determination.

Senior Executive Service (SES). Positions in an agency which grade 16, 17, or 18 of the General Schedule or Level IV or V of the Executive Schedule (unless exempted). Also includes equivalent positions which need not be filled by appointment by the President and confirmation by the Senate and which have not been specifically excluded from the SES.

Total Paid Civilian Employment. total direct and indirect hire civilian employment. For direct hires, includes, with some exceptions, all direct hire employees who had not officially separated as of the reporting period or were on paid leave.

Wage System Employees. Employees whose basic rates of pay are fixed in accordance with locally prevailing rates or by wage boards or similar administrative authority. Includes prevailing rate employees. (Prevailing rate employees are those employed by an agency in a recognized trade or craft; other skilled mechanical craft; or an unskilled, semiskilled, or skilled manual labor occupation. Also includes any other person, including a foreman or supervisor, in a position where trade, craft, or labor experience and knowledge is a paramount requirement.)

DATE  
FILMED  
- 88