

AD-A166 181

MILITARY MANPOWER STATISTICS FIRST QUARTER FY-86 (U)
WASHINGTON HEADQUARTERS SERVICES (DOD) DC DIRECTORATE
FOR INFORMATION OPERATIONS AND REPORTS 31 DEC 85
DIOR/003-86/01

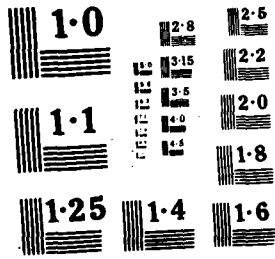
1/1

UNCLASSIFIED

F/G 5/9

ML

END
DATE
11/85
BY



AD-A166181

M03

Department of Defense

DIER/M03-86/01

MILITARY MANPOWER STATISTICS

DECEMBER 1985

First Quarter, FY 86



AD-A166181



DIRECTORATE FOR INFORMATION
OPERATIONS AND REPORTS (DIOR)

Department of Defense
MILITARY MANPOWER STATISTICS
December 31, 1985

*Issued Quarterly by
Washington Headquarters Services
Directorate for Information
Operations and Reports*

*FOR SALE BY THE SUPERINTENDENT OF DOCUMENTS
U.S. GOVERNMENT PRINTING OFFICE
WASHINGTON, D.C. 20402*

DTIC AND NTIS IDENTIFICATION NUMBER FOR THIS PUBLICATION IS DIOR/M03-86/01.

FOREWORD

Military Manpower Statistics (MMS) is a quarterly publication generated from a computerized data base of manpower information. The MMS report consists of 26 statistical tables providing a variety of information on various aspects of Department of Defense (DoD) military manpower. In addition to summary data, detailed data are provided by Military Department or defense component, type of personnel (officer, enlisted), grade, and location. Selected tables also provide data on women in the military.

**NOTE: Excluded from all total DoD strength figures for fiscal year 1985 are approximately 55,000 full-time military personnel who are paid from other than active duty military personnel appropriations. This group is funded from appropriations for reserve components and Corps of Engineers civil functions.*

TABLE OF CONTENTS

Active Duty Military Manpower Statistics

<u>Table</u>		<u>Page</u>
Table P10	Summary of Military Personnel	1
Figure 1	Active Duty Military Personnel As of December 31, 1985	1.1
Table P11	Department of Defense Manpower Comparison	2
Table P11.1	Military and Civilian Direct Hire Civilian Personnel by Component (Excluding the Military Departments), According to Type	3
Table P22.1	Total Active Duty Military Personnel by Service	4
Table P23.1	Active Duty Officer Personnel and Percent of Total Military Personnel by Service	5
Table P23.3	Total Active Duty Military Personnel by Type	6
Table P23.4	Army Active Duty Military Personnel by Type	7
Table P23.5	Navy Active Duty Military Personnel by Type	8
Table P23.6	Marine Corps Active Duty Military Personnel by Type	9
Table P23.7	Air Force Active Duty Military Personnel by Type	10

Active Duty Military Manpower Statistics

<u>Table</u>		<u>Page</u>
Table P23.11	Army Active Duty Military Personnel	11
Table P23.51	Navy Active Duty Military Personnel	12
Table P23.61	Marine Corps Active Duty Military Personnel	13
Table P23.71	Air Force Active Duty Military Personnel	14
Table P25.6	Female Military Personnel on Active Duty, Officers and Enlisted by Service	15
Figure 2	Female Military Personnel on Active Duty December 31, 1985	15.1
Table P26.0	Military Personnel on Active Duty by Grade in Which Serving	16
Table P26.02	Female Military Personnel on Active Duty by Grade in Which Serving	17
Table P26.04	Military Personnel on Active Duty by Grade in Which Serving - Regular	18
Table P26.05	Military Personnel on Active Duty by Grade in Which Serving - Reserve	19
Table P27.1	Summary of Enlisted Personnel Accessions	20
Table P27.21	Army Enlisted Personnel Accessions	21

Active Duty Military Manpower Statistics

<u>Table</u>		<u>Page</u>
Table P27.22	Navy Enlisted Personnel Accessions	22
Table P27.23	Marine Corps Enlisted Personnel Accessions	23
Table P27.24	Air Force Enlisted Personnel Accessions	24
Table P29.20-29.34	Reenlistment Rates by Service	25
Table P309A	Active Duty Military Personnel Strengths by Regional Area and by Country	28
	Glossary of Terms	33

TABLE P10

DEPARTMENT OF DEFENSE
SUMMARY OF MILITARY PERSONNEL

	TOTAL DOD	ARMY	NAVY	MARINE CORPS	AIR FORCE

ACTIVE DUTY MILITARY AS OF OCT 31 1985					
OFFICER	308,639	109,661	70,340	20,183	108,455
ENLISTED	1,829,085	668,202	494,191	177,779	488,913
CADETS & MIDSHIPMEN	13,636	4,516	4,631	-	4,489
TOTAL ACTIVE DUTY MILITARY	2,151,360	782,379	569,162	197,962	601,857

ACTIVE DUTY MILITARY AS OF NOV 30 1985					
OFFICER	308,347	109,332	70,397	20,052	108,566
ENLISTED	1,831,200	669,858	494,817	177,281	489,244
CADETS & MIDSHIPMEN	13,531	4,510	4,540	-	4,481
TOTAL ACTIVE DUTY MILITARY	2,153,078	783,700	569,754	197,333	602,291

ACTIVE DUTY MILITARY AS OF DEC 31 1985					
OFFICER	308,119	109,226	70,270	20,008	108,615
ENLISTED	1,828,805	665,937	495,111	177,163	490,594
CADETS & MIDSHIPMEN	13,455	4,472	4,539	-	4,444
TOTAL ACTIVE DUTY MILITARY	2,150,379	779,635	569,920	197,171	603,653

**Active Duty Military Personnel
As Of December 31, 1985**

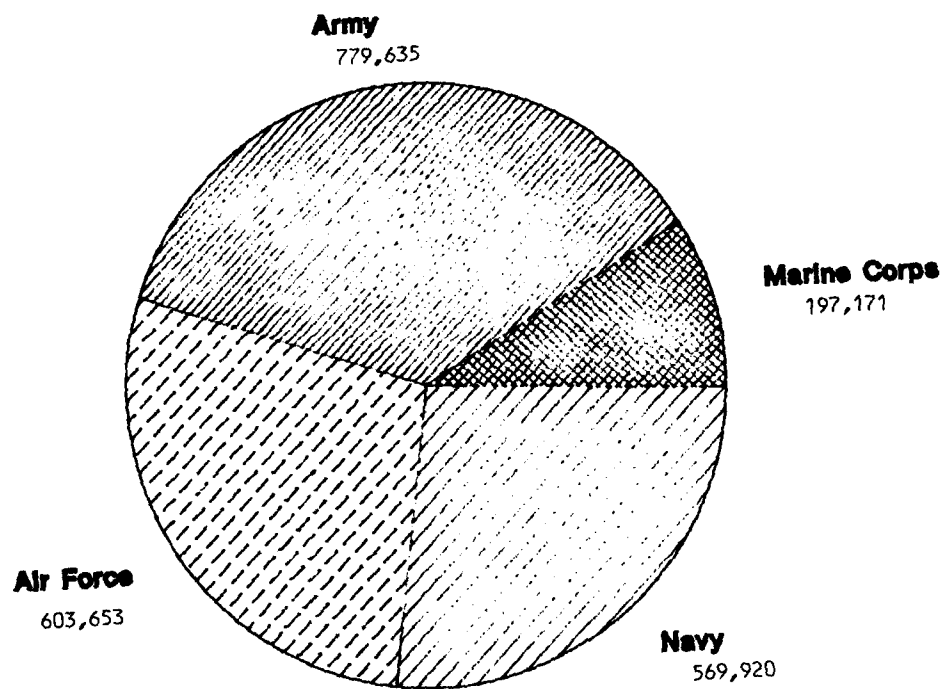


Figure 1

1.1

TABLE P11
DOD MANPOWER COMPARISON
(MILITARY & CIVIL FUNCTIONS) A/

DATE	TOTAL DOD	ARMY			NAVY AND MARINE CORPS				AIR FORCE			OTHER DoD ORGANI- ZATIONS
		MILI- TARY	CIVIL- IAN B/	TOTAL	NAVY MILI- TARY	MARINE CORPS MILI- TARY	CIVIL- IAN B/	TOTAL	MILI- TARY	CIVIL- IAN B/	TOTAL	CIVIL- IAN C/
OCT 31 85	3,241,857	782,379	395,621	1,178,000	569,162	197,962	351,307	1,118,431	601,857	254,233	856,090	89,336
NOV 30 85	3,247,529	783,700	396,333	1,180,033	569,754	197,333	352,001	1,119,088	602,291	256,028	858,319	90,089
DEC 31 85	3,248,546	779,635	397,186	1,176,821	569,920	197,171	352,194	1,119,285	603,653	257,814	861,467	90,973

A/ CIVIL FUNCTIONS INCLUDES CIVILIAN PERSONNEL ONLY.

B/ "TOTAL PAID EMPLOYEES" AS REPORTED OFFICIALLY TO THE OFFICE OF PERSONNEL MANAGEMENT. EXCLUDES OVERSEAS SUPPORT PERSONNEL (INDIRECT HIRE).

C/ CIVILIAN PERSONNEL ONLY. MILITARY PERSONNEL ASSIGNED TO OTHER DoD ORGANIZATIONS ARE REPORTED BY THEIR RESPECTIVE SERVICES

TABLE P11.1
MILITARY AND DIRECT HIRE CIVILIAN PERSONNEL, BY COMPONENT (EXCLUDING
THE MILITARY DEPARTMENTS), ACCORDING TO TYPE
DECEMBER 31, 1985

DEFENSE COMPONENT	TOTAL	CIVILIAN A/	TOTAL	MILITARY B/	
				OFFICER	ENLISTED
OSD & ORGANIZATIONS SERVICED BY OSD C/	6,243	4,000	2,243	1,623	620
DEFENSE COMMUNICATIONS AGENCY	4,695	4,695	-	-	-
DEFENSE CONTRACT AUDIT AGENCY	3,782	3,782	-	-	-
DEFENSE INVESTIGATIVE SERVICE	53,899	52,903	996	825	171
DEFENSE LOGISTICS AGENCY	9,720	9,264	456	198	258
DEFENSE MAPPING AGENCY	1,296	772	524	321	203
DEFENSE NUCLEAR AGENCY	12,702	12,702	-	-	-
DOD DEPENDENTS SCHOOLS OF THE HEALTH SCIENCES	1,000	838	162	102	60
TOTAL	97,131	90,973	6,158	3,661	2,497

A/ INCLUDES PERSONNEL NOT SUBJECT TO OFFICE OF MANAGEMENT AND BUDGET (OMB) CEILING CONTROL
B/ MILITARY PERSONNEL ASSIGNED TO OTHER DoD ORGANIZATIONS ARE ALSO INCLUDED IN THE STRENGTH
FIGURES FOR THE RESPECTIVE SERVICES
C/ SEE THE GLOSSARY FOR A LIST OF ORGANIZATIONS SERVICED BY OSD.
D/ EXCLUDES STUDENTS

TABLE P22.1
 DEPARTMENT OF DEFENSE
 TOTAL ACTIVE DUTY MILITARY PERSONNEL BY SERVICE

DATE	TOTAL DOD	ARMY	NAVY	MARINE CORPS	AIR FORCE
OCT 31 1985	2,151,360	782,379	569,162	197,962	601,857
NOV 30 1985	2,153,078	783,700	569,754	197,333	602,291
DEC 31 1985	2,150,379	779,635	569,920	197,171	603,653

TABLE P23.1
 DEPARTMENT OF DEFENSE
 ACTIVE DUTY OFFICER PERSONNEL AND PERCENT OF TOTAL MILITARY PERSONNEL, BY SERVICE

DATE	TOTAL DOD		ARMY		NAVY		MARINE CORPS		AIR FORCE	
	NUMBER	%	NUMBER	%	NUMBER	%	NUMBER	%	NUMBER	%
OCT 31 1985	308,639	14.3	109,661	14.0	70,340	12.4	20,183	10.2	108,455	18.0
NOV 30 1985	308,347	14.3	109,332	14.0	70,397	12.4	20,052	10.2	108,566	18.0
DEC 31 1985	308,119	14.3	109,226	14.0	70,270	12.3	20,008	10.1	108,615	18.0

TABLE P23.3
DEPARTMENT OF DEFENSE
TOTAL ACTIVE DUTY MILITARY PERSONNEL BY TYPE

DATE	TOTAL	OFFICERS	ENLISTED	A/ CADETS AND MIDSHIPMEN
OCT 31 1985	2,151,360	308,639	1,829,085	13,636
NOV 30 1985	2,153,078	308,347	1,831,200	13,531
DEC 31 1985	2,150,379	308,119	1,828,805	13,455

A/ CONSISTS OF THE FOLLOWING:
FOR ARMY - CADETS, U. S. MILITARY ACADEMY
FOR NAVY - MIDSHIPMEN, U. S. NAVAL ACADEMY
FOR AIR FORCE - CADETS, U. S. AIR FORCE ACADEMY

TABLE P23.4
 DEPARTMENT OF DEFENSE
 ARMY ACTIVE DUTY MILITARY PERSONNEL BY TYPE

DATE	TOTAL	OFFICERS	ENLISTED	CADETS U.S. MILITARY ACADEMY
OCT 31 1985	782,379	109,661	668,202	4,516
NOV 30 1985	783,700	109,332	669,858	4,510
DEC 31 1985	779,635	109,226	665,937	4,472

TABLE P23.5
 DEPARTMENT OF DEFENSE
 NAVY ACTIVE DUTY MILITARY PERSONNEL BY TYPE

DATE	TOTAL	OFFICERS	ENLISTED	MIDSHIPMEN U.S. NAVAL ACADEMY
OCT 31 1985	569,162	70,340	494,191	4,631
NOV 30 1985	569,754	70,397	494,817	4,540
DEC 31 1985	569,920	70,270	495,111	4,539

TABLE P23.6
 DEPARTMENT OF DEFENSE
 MARINE CORPS ACTIVE DUTY MILITARY PERSONNEL BY TYPE

DATE	TOTAL	OFFICERS	ENLISTED
OCT 31 1985	197,962	20,183	177,779
NOV 30 1985	197,333	20,052	177,281
DEC 31 1985	197,171	20,008	177,163

TABLE P23.7
 DEPARTMENT OF DEFENSE
 AIR FORCE ACTIVE DUTY MILITARY PERSONNEL BY TYPE

DATE	TOTAL	OFFICERS	ENLISTED	CADETS U S A F ACADEMY
OCT 31 1985	601,857	108,455	488,913	4,489
NOV 30 1985	602,291	108,566	489,244	4,481
DEC 31 1985	603,653	108,615	490,594	4,444

TABLE P23 41
 DEPARTMENT OF DEFENSE
 ARMY ACTIVE DUTY MILITARY PERSONNEL
 REPORTED STRENGTH AND ADJUSTMENTS TO REPORTED STRENGTH TO DERIVE "DIRECT PROGRAM STRENGTH"
 CHARGEABLE TO APPROPRIATION "MILITARY PERSONNEL, ARMY"

DATE	REPORTED STRENGTH	(LESS) REIMBURSABLES		DIRECT PROGRAM STRENGTH CHARGEABLE TO APPROPRIATION "MILITARY PERSONNEL, ARMY"			CADETS U S MILITARY ACADEMY
	TOTAL	OFFICER	ENLISTED	TOTAL	OFFICER	ENLISTED	
OCT 31 1985	782,379	468	302	781,609	109,193	667,900	4,516
NOV 30 1985	783,700	452	302	782,946	108,880	669,556	4,510
DEC 31 1985	779,635	444	312	778,879	108,782	665,625	4,472

TABLE P23.51

DEPARTMENT OF DEFENSE
NAVY ACTIVE DUTY MILITARY PERSONNEL

REPORTED STRENGTH, AND ADJUSTMENTS TO REPORTED STRENGTH TO DERIVE "DIRECT PROGRAM STRENGTH"
CHARGEABLE TO APPROPRIATION "MILITARY PERSONNEL, NAVY"

DATE	REPORTED STRENGTH	(LESS) REIMBURSABLES		DIRECT PROGRAM STRENGTH CHARGEABLE TO APPROPRIATION "MILITARY PERSONNEL, NAVY"			MIDSHIPMEN U.S. NAVAL ACADEMY
	TOTAL	OFFICER	ENLISTED	TOTAL	OFFICER	ENLISTED	
OCT 31 1985	569,162	389	1,016	567,757	69,951	493,175	4,631
NOV 30 1985	569,754	374	1,002	568,378	70,023	493,815	4,540
DEC 31 1985	569,920	375	1,043	568,502	69,895	494,068	4,539

TABLE P23.61
 DEPARTMENT OF DEFENSE
 MARINE CORPS ACTIVE DUTY MILITARY PERSONNEL
 REPORTED STRENGTH, AND ADJUSTMENTS TO REPORTED STRENGTH TO DERIVE "DIRECT PROGRAM STRENGTH"
 CHARGEABLE TO APPROPRIATION "MILITARY PERSONNEL, MARINE CORPS"

DATE	REPORTED STRENGTH	(LESS) REIMBURSABLES		DIRECT PROGRAM STRENGTH CHARGEABLE TO APPN "MILITARY PERSONNEL, MARINE CORPS"		
	TOTAL	OFFICER	ENLISTED	TOTAL	OFFICER	ENLISTED
OCT 31 1985	197,962	26	1	197,935	20,157	177,778
NOV 30 1985	197,333	26	1	197,306	20,026	177,280
DEC 31 1985	197,171	26	1	197,144	19,982	177,162

TABLE P23 71
 DEPARTMENT OF DEFENSE
 AIR FORCE ACTIVE DUTY MILITARY PERSONNEL
 REPORTED STRENGTH, AND ADJUSTMENTS TO REPORTED STRENGTH TO DERIVE "DIRECT PROGRAM STRENGTH"
 CHARGEABLE TO APPROPRIATION "MILITARY PERSONNEL, AIR FORCE"

DATE	REPORTED STRENGTH	(LESS) REIMBURSABLES		DIRECT PROGRAM STRENGTH CHARGEABLE TO APPROP: "MILITARY PERSONNEL, AIR FORCE"			
	TOTAL	OFFICER	ENLISTED	TOTAL	OFFICER	ENLISTED	CADETS U S A F ACADEMY
OCT 31 1985	601,857	-	-	601,857	108,455	488,913	4,489
NOV 30 1985	602,291	-	-	602,291	108,566	489,244	4,481
DEC 31 1985	603,653	-	-	603,653	108,615	490,594	4,444

TABLE P25.6
 DEPARTMENT OF DEFENSE
 FEMALE MILITARY PERSONNEL ON ACTIVE DUTY, OFFICERS AND ENLISTED, BY SERVICE

DATE	TOTAL DOD			ARMY			NAVY			MARINE CORPS			AIR FORCE		
	TOTAL	OFF	ENLISTED, CADETS & MIDSHIPMEN	TOTAL	OFF	ENL & CADETS	TOTAL	OFF	ENL & MID-SHIPMEN	TOTAL	OFF	ENL	TOTAL	OFF	ENL & CADETS
7 31 85	212,567	30,551	182,016	79,605	10,956	68,649	52,719	6,950	45,769	9,824	647	9,177	70,419	11,998	58,421
9 30 85	213,347	30,639	182,708	79,720	10,888	68,832	53,076	7,064	46,012	9,827	646	9,181	70,724	12,041	58,683
11 31 85	213,357	30,491	182,866	79,309	10,853	68,456	53,248	6,961	46,287	9,746	646	9,100	71,054	12,031	59,023

**Female Military Personnel on Active Duty
December 31, 1985**

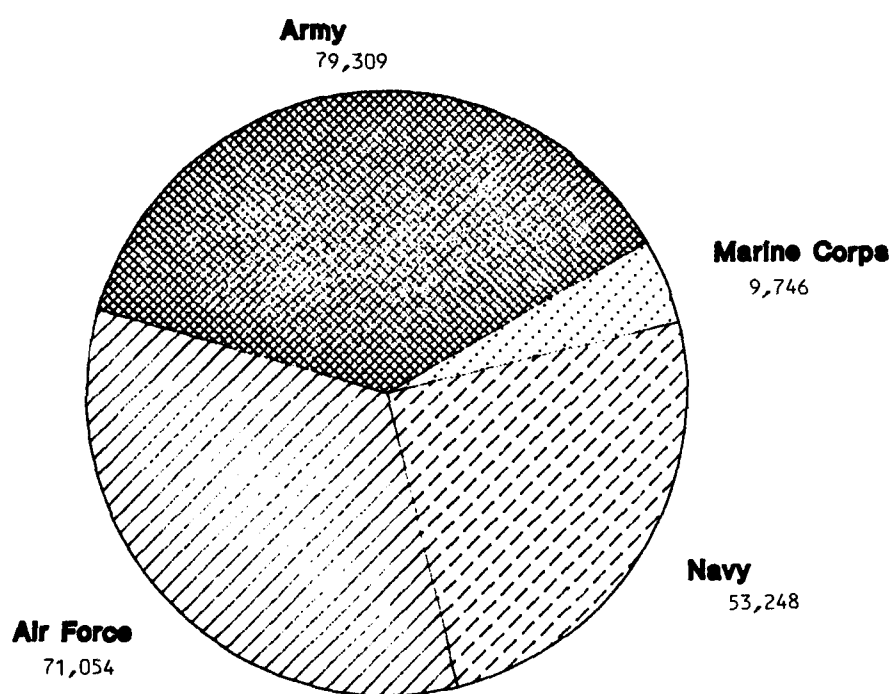


Figure 2

TABLE P26.0
DEPARTMENT OF DEFENSE
MILITARY PERSONNEL ON ACTIVE DUTY BY GRADE IN WHICH SERVING
DECEMBER 31, 1985

RANK/GRADE	TOTAL DOD	ARMY	NAVY	MARINE CORPS	AIR FORCE
GENERAL - ADMIRAL	36	11	9	3	13
LT GENERAL - VICE ADMIRAL	125	49	33	7	36
MAJ GENERAL - REAR ADMIRAL	365	142	82	22	119
BRIG GENERAL - REAR ADMIRAL(L)	527	196	127	33	171
COLONEL - CAPTAIN	14,830	4,872	3,685	649	5,624
LIEUTENANT COL - COMMANDER	33,077	10,950	7,802	1,648	12,677
MAJOR - LT COMMANDER	53,667	17,204	13,289	3,246	19,928
CAPTAIN - LIEUTENANT	103,478	35,337	21,707	5,918	40,516
1st LIEUTENANT - LIEUTENANT (JG)	44,047	14,598	10,524	4,566	14,359
2nd LIEUTENANT - ENSIGN	37,955	10,415	9,902	2,466	15,172
CHIEF WARRANT OFFICER W-4	3,195	2,012	1,065	118	-
CHIEF WARRANT OFFICER W-3	5,237	4,087	919	231	-
CHIEF WARRANT OFFICER W-2	9,337	7,545	1,126	666	-
WARRANT OFFICER W-1	2,243	1,808	-	435	-
TOTAL OFFICERS	308,119	109,226	70,270	20,008	108,615
E-9	15,155	4,471	4,536	1,343	4,805
E-8	38,762	15,399	9,780	3,725	9,858
E-7	131,589	51,850	32,549	9,402	37,788
E-6	238,514	87,441	78,358	15,465	57,250
E-5	356,276	118,458	101,915	25,280	110,623
E-4	453,428	199,233	99,990	34,276	119,929
E-3	329,566	90,234	91,075	54,499	93,758
E-2	134,931	40,551	40,536	21,013	32,781
E-1	130,584	58,300	36,322	12,160	23,802
TOTAL ENLISTED	1,828,805	665,937	495,111	177,163	490,594
CADETS & MIDSHIPMEN	13,455	4,472	4,539	-	4,444
GRAND TOTAL	2,150,379	779,635	569,920	197,171	603,653

TABLE P26.02
DEPARTMENT OF DEFENSE
FEMALE MILITARY PERSONNEL ON ACTIVE DUTY BY GRADE IN WHICH SERVING
DECEMBER 31, 1985

RANK/GRADE	TOTAL DOD	ARMY	NAVY	MARINE CORPS	AIR FORCE
GENERAL - ADMIRAL	-	-	-	-	-
LT GENERAL - VICE ADMIRAL	-	-	-	-	-
MAJ GENERAL - REAR ADMIRAL	-	-	-	-	-
BRIG GENERAL - REAR ADMIRAL(L)	9	4	2	-	3
COLONEL - CAPTAIN	298	95	100	9	94
LIEUTENANT COL - COMMANDER	1,153	368	364	29	392
MAJOR - LT COMMANDER	3,866	1,333	1,234	69	1,230
CAPTAIN - LIEUTENANT	13,015	4,573	2,782	219	5,441
1st LIEUTENANT - LIEUTENANT (JG)	5,956	2,207	1,346	181	2,222
2nd LIEUTENANT - ENSIGN	5,812	1,963	1,105	95	2,649
CHIEF WARRANT OFFICER W-4	10	-	7	3	-
CHIEF WARRANT OFFICER W-3	36	27	5	4	-
CHIEF WARRANT OFFICER W-2	217	185	16	16	-
WARRANT OFFICER W-1	119	98	-	21	-
TOTAL OFFICERS	30,491	10,853	6,961	646	12,031
E-9	63	19	13	10	21
E-8	373	198	70	40	65
E-7	3,111	1,635	671	145	660
E-6	14,002	5,811	4,255	579	3,357
E-5	41,474	14,604	10,395	1,881	14,594
E-4	55,188	25,073	10,689	2,261	17,165
E-3	37,900	10,352	11,777	2,559	13,212
E-2	14,688	4,120	4,200	1,165	5,203
E-1	14,657	6,149	3,844	460	4,204
TOTAL ENLISTED	181,456	67,961	45,914	9,100	58,481
CADETS & MIDSHIPMEN	1,410	495	373	-	542
GRAND TOTAL	213,357	79,309	53,248	9,746	71,054

TABLE P26.04
DEPARTMENT OF DEFENSE
MILITARY PERSONNEL ON ACTIVE DUTY BY GRADE IN WHICH SERVING
REGULAR A/
DECEMBER 31, 1985

RANK/GRADE	TOTAL DOD	ARMY	NAVY	MARINE CORPS	AIR FORCE
GENERAL - ADMIRAL	36	11	9	3	13
LT GENERAL - VICE ADMIRAL	123	48	33	6	36
MAJ GENERAL - REAR ADMIRAL	362	140	81	22	119
BRIG GENERAL - REAR ADMIRAL(L)	523	193	126	33	171
COLONEL - CAPTAIN	14,398	4,710	3,621	643	5,424
LIEUTENANT COL - COMMANDER	31,825	10,420	7,575	1,623	12,207
MAJOR - LT COMMANDER	47,624	14,042	12,267	3,209	18,106
CAPTAIN - LIEUTENANT	59,790	13,906	14,737	5,210	25,937
1st LIEUTENANT - LIEUTENANT (JG)	16,210	6,565	4,997	2,137	2,511
2nd LIEUTENANT - ENSIGN	11,366	3,502	4,444	960	2,460
CHIEF WARRANT OFFICER W-4	2,900	1,734	1,049	117	-
CHIEF WARRANT OFFICER W-3	4,059	2,916	914	229	-
CHIEF WARRANT OFFICER W-2	3,197	1,415	1,120	662	-
WARRANT OFFICER W-1	441	6	-	435	-
TOTAL OFFICERS	192,854	59,608	50,973	15,289	66,984
E-9	15,120	4,468	4,519	1,329	4,804
E-8	38,680	15,382	9,729	3,711	9,858
E-7	151,326	51,813	32,364	9,366	37,783
E-6	237,925	87,406	77,884	15,401	57,234
E-5	352,715	118,447	99,184	25,165	109,919
E-4	446,357	199,212	93,229	34,211	119,705
E-3	314,414	90,164	76,348	54,485	93,417
E-2	126,495	40,428	32,327	21,003	32,737
E-1	121,521	58,039	27,688	12,151	23,643
TOTAL ENLISTED	1,784,553	665,359	453,272	176,822	489,100
CADETS & MIDSHIPMEN	13,455	4,472	4,539	-	4,444
REGULAR TOTAL	1,990,862	729,439	508,784	192,111	560,528

A/ REGULAR PLUS RETIRED REGULAR OFFICERS ON ACTIVE DUTY

TABLE P26 05
 DEPARTMENT OF DEFENSE
 MILITARY PERSONNEL ON ACTIVE DUTY BY GRADE IN WHICH SERVING
 RESERVE A/
 DECEMBER 31, 1985

RANK/GRADE	TOTAL DOD	ARMY	NAVY	MARINE CORPS	AIR FORCE
GENERAL - ADMIRAL	-	-	-	-	-
LT GENERAL - VICE ADMIRAL	2	1	-	1	-
MAJ GENERAL - REAR ADMIRAL	3	2	1	-	-
BRIG GENERAL - REAR ADMIRAL(L)	4	3	1	-	-
COLONEL - CAPTAIN	432	162	64	6	200
LIEUTENANT COL - COMMANDER	1,252	530	227	25	470
MAJOR - LT COMMANDER	6,043	3,162	1,022	37	1,822
CAPTAIN - LIEUTENANT	43,688	21,431	6,970	708	14,579
1st LIEUTENANT - LIEUTENANT (JG)	27,837	8,033	5,527	2,429	11,848
2nd LIEUTENANT - ENSIGN	26,589	6,913	5,458	1,506	12,712
CHIEF WARRANT OFFICER W-4	295	278	16	1	-
CHIEF WARRANT OFFICER W-3	1,178	1,171	5	2	-
CHIEF WARRANT OFFICER W-2	6,140	6,130	6	4	-
WARRANT OFFICER W-1	1,802	1,802	-	-	-
TOTAL OFFICERS	115,265	49,618	19,297	4,719	41,631
E-9	35	3	17	14	1
E-8	82	17	51	14	-
E-7	263	37	185	36	5
E-6	589	35	474	64	16
E-5	3,561	11	2,731	115	704
E-4	7,071	21	6,761	65	224
E-3	15,152	70	14,727	14	341
E-2	8,436	123	8,259	10	44
E-1	9,063	261	8,634	9	159
TOTAL ENLISTED	44,252	578	41,839	341	1,494
RESERVE TOTAL	159,517	50,196	61,136	5,060	43,125

A/ INCLUDES RESERVE, NATIONAL GUARD, AUS, AND AFUS OFFICERS ON ACTIVE DUTY.

TABLE P27 1
DEPARTMENT OF DEFENSE
SUMMARY OF ENLISTED PERSONNEL ACCESSIONS
FISCAL YEAR 1986

	OCT 1985	NOV 1985	DEC 1985	JAN 1986	FEB 1986	MAR 1986
TOTAL DEPARTMENT OF DEFENSE	48.810	45.496	37.044			
INDUCTIONS	-	-	-			
FIRST ENLISTMENTS	24.993	24.570	17.479			
IMMEDIATE REENLISTMENTS	18.873	17.021	16.613			
OTHER REENLISTMENTS	2.930	1.754	1.256			
RESERVES TO ACTIVE DUTY A/	2.014	2.151	1.696			
ARMY	22.220	18.876	11.969			
INDUCTIONS	-	-	-			
FIRST ENLISTMENTS	12.200	11.610	4.920			
IMMEDIATE REENLISTMENTS	7.878	6.331	6.655			
OTHER REENLISTMENTS	2.075	827	360			
RESERVES TO ACTIVE DUTY	67	108	34			
NAVY	12.468	13.132	10.606			
INDUCTIONS	-	-	-			
FIRST ENLISTMENTS	5.238	5.837	4.600			
IMMEDIATE REENLISTMENTS	4.965	4.845	3.960			
OTHER REENLISTMENTS	445	489	473			
RESERVES TO ACTIVE DUTY	1.820	1.961	1.573			
MARINE CORPS	3.282	4.036	4.361			
INDUCTIONS	-	-	-			
FIRST ENLISTMENTS	1.975	2.548	2.404			
IMMEDIATE REENLISTMENTS	1.054	1.240	1.735			
OTHER REENLISTMENTS	127	167	139			
RESERVES TO ACTIVE DUTY	126	81	83			
AIR FORCE	10.840	9.452	10.108			
INDUCTIONS	-	-	-			
FIRST ENLISTMENTS	5.580	4.575	5.555			
IMMEDIATE REENLISTMENTS	4.976	4.605	4.263			
OTHER REENLISTMENTS	283	271	284			
RESERVES TO ACTIVE DUTY	1	1	6			

A/ INCLUDES NATIONAL GUARD.

TABLE P27 21
 DEPARTMENT OF DEFENSE
 ARMY ENLISTED PERSONNEL ACCESSIONS
 FISCAL YEAR 1986

	OCT 1985 ----	NOV 1985 ----	DEC 1985 ----	JAN 1986 ----	FEB 1986 ----	MAR 1986 ----
TOTAL	22,220	18,876	11,969			
REGULAR ENL AND REENL - TOTAL	22,153	18,768	11,935			
FIRST ENLISTMENTS	12,200	11,610	4,920			
REENLISTMENTS - TOTAL	9,953	7,158	7,015			
IMMEDIATE REENLISTMENTS	7,878	6,331	6,655			
FORMER REGULAR	7,876	6,331	6,653			
FORMER RESERVE & N G	2	-	2			
FORMER INDUCTEE	-	-	-			
REENL OTHER THAN IMMEDIATE	2,075	827	360			
WITHIN 2-90 DAYS AFTER SEPARATION	11	16	13			
FORMER REGULAR	5	10	3			
FORMER RESERVE & N G	5	2	2			
FORMER INDUCTEE	1	-	6			
FORMER OFFICER	-	4	2			
OVER 90 DAYS AFTER SEPARATION	2,064	811	347			
RESERVES AND N G CALLS	67	108	34			

TABLE P27 22
 DEPARTMENT OF DEFENSE
 NAVY ENLISTED PERSONNEL ACCESSIONS
 FISCAL YEAR 1986

	OCT 1985 ---	NOV 1985 ---	DEC 1985 ---	JAN 1986 ---	FEB 1986 ---	MAR 1986 ---
TOTAL	12.468	13.132	10.606			
REGULAR ENL. AND REENL. - TOTAL	10.648	11.171	9.033			
FIRST ENLISTMENTS	5.238	5.837	4.600			
REENLISTMENTS - TOTAL	5.410	5.334	4.433			
IMMEDIATE REENLISTMENTS	4.965	4.845	3.960			
FORMER REGULAR	4.721	4.604	3.773			
FORMER RESERVE	244	241	187			
REENL. OTHER THAN IMMEDIATE	445	489	473			
WITHIN 2-90 DAYS AFTER SEPARATION	91	98	84			
FORMER REGULAR	91	98	84			
FORMER RESERVE	-	-	-			
OVER 90 DAYS AFTER SEPARATION	354	391	389			
RESERVES TO ACTIVE DUTY	1.820	1.961	1.573			
FIRST ENLISTMENTS	224	184	140			
REENLISTMENTS	1.596	1.777	1.433			
REPORTED TO ACTIVE DUTY						

TABLE P27.23
DEPARTMENT OF DEFENSE
MARINE CORPS ENLISTED PERSONNEL ACCESSIONS
FISCAL YEAR 1986

	OCT 1985 ----	NOV 1985 ----	DEC 1985 ----	JAN 1986 ----	FEB 1986 ----	MAR 1986 ----
TOTAL	3,282	4,036	4,361			
REGULAR ENL. AND REENL. - TOTAL	3,156	3,955	4,278			
FIRST ENLISTMENTS	1,975	2,548	2,404			
REENLISTMENTS - TOTAL	1,181	1,407	1,874			
IMMEDIATE REENLISTMENTS	1,054	1,240	1,735			
FORMER REGULAR A/	1,052	1,233	1,732			
FORMER RESERVE	2	7	3			
FORMER INDUCTEE	-	-	-			
REENL. OTHER THAN IMMEDIATE	127	167	139			
WITHIN 2-90 DAYS AFTER SEPARATION	22	28	22			
FORMER REGULAR	20	25	19			
FORMER RESERVE	2	3	3			
FORMER INDUCTEE	-	-	-			
OVER 90 DAYS AFTER SEPARATION	105	139	117			
RESERVES TO ACTIVE DUTY	126	81	83			
FIRST ENLISTMENTS	-	-	-			
REENLISTMENTS	1	-	1			
REPORTED TO ACTIVE DUTY	125	81	82			

A/ INCLUDES EXTENSIONS FOR WHICH REENLISTMENT BONUS IS PAID.
B/ INCLUDES ENLISTMENTS OF FORMER OFFICERS

TABLE P27 24
 DEPARTMENT OF DEFENSE
 AIR FORCE ENLISTED PERSONNEL ACCESSIONS
 FISCAL YEAR 1986

	OCT 1985 -----	NOV 1985 -----	DEC 1985 -----	JAN 1986 -----	FEB 1986 -----	MAR 1986 -----
TOTAL	10,840	9,452	10,108			
REGULAR ENL AND REENL - TOTAL	10,839	9,451	10,102			
FIRST ENLISTMENTS	5,580	4,575	5,555			
REENLISTMENTS - TOTAL	5,259	4,876	4,547			
IMMEDIATE REENLISTMENTS	4,976	4,605	4,263			
FORMER REGULAR FORMER RESERVE & N G	4,976 -	4,604 1	4,263 -			
REENL. OTHER THAN IMMEDIATE	283	271	284			
OVER 90 DAYS AFTER SEPARATION A/	283	271	284			
RESERVES & N G TO ACTIVE DUTY	1	1	6			

A/ INCLUDES ENLISTMENTS OF FORMER COMMISSIONED AND WARRANT OFFICERS

TABLE P29.20-29.34
DEPARTMENT OF DEFENSE
REENLISTMENT RATES BY SERVICE

	A/ "UNADJUSTED" REENLISTMENT RATES FOR TOTAL REGULARS					B/ "ADJUSTED" REENLISTMENT RATES FOR TOTAL REGULARS				
	TOTAL DOD	ARMY	NAVY	MARINE CORPS	AIR FORCE	TOTAL DOD	ARMY	NAVY	MARINE CORPS	AIR FORCE
FY 1981										
ELIGIBLES	341,428	116,743	94,303	36,833	93,549	339,304	131,957	90,462	36,395	80,490
REENLISTMENTS	206,917	77,892	51,519	15,907	61,599	206,315	93,105	49,039	15,510	48,661
REENLISTMENT RATE	60.6%	66.7%	54.6%	43.2%	65.8%	60.8%	70.6%	54.2%	42.6%	60.5%
FY 1982										
ELIGIBLES	329,296	117,331	82,192	32,948	96,825	325,066	126,035	84,001	33,594	81,436
REENLISTMENTS	224,465	84,631	52,254	16,117	71,463	212,452	93,335	54,450	12,171	52,496
REENLISTMENT RATE	68.2%	72.1%	63.6%	48.9%	73.8%	65.4%	74.1%	64.8%	36.2%	64.5%
FY 1983										
ELIGIBLES	327,636	128,084	75,173	29,736	94,643	324,238	144,379	79,977	30,460	69,422
REENLISTMENTS	223,760	82,369	51,201	15,646	74,544	220,054	98,661	55,446	16,592	49,355
REENLISTMENT RATE	68.3%	64.3%	68.1%	52.6%	78.8%	67.9%	68.3%	69.3%	54.5%	71.1%
FY 1984										
ELIGIBLES	325,572	122,340	86,828	34,243	82,161	317,672	133,217	88,703	31,882	63,870
REENLISTMENTS	218,139	76,954	59,394	19,002	62,789	209,221	87,831	60,254	16,631	44,505
REENLISTMENT RATE	67.0%	62.9%	68.4%	55.5%	76.4%	65.9%	65.9%	67.9%	52.2%	69.7%
FY 1985										
ELIGIBLES	298,619	90,301	87,995	31,800	88,523	380,028	153,153	87,380	31,656	107,839
REENLISTMENTS	187,649	50,951	58,137	16,557	62,004	217,909	63,434	56,737	16,418	81,320
REENLISTMENT RATE	62.8%	56.4%	66.1%	52.1%	70.0%	57.3%	41.4%	64.9%	51.9%	75.4%

- A/ "UNADJUSTED REENLISTMENT RATE" - THE RATIO OF TOTAL REENLISTMENTS OCCURRING IN A GIVEN PERIOD TO TOTAL SEPARATIONS ELIGIBLE TO REENLIST IN THE SAME PERIOD, EXPRESSED AS A PERCENTAGE.
- B/ "ADJUSTED REENLISTMENT RATE" - THE "UNADJUSTED" RATE ADJUSTED TO EXCLUDE THE EFFECTS OF: (1) EARLY SEPARATIONS FOR IMMEDIATE REENLISTMENTS AND (2) OTHER EARLY DISCHARGES OF ELIGIBLES UNDER EARLY RELEASE PROGRAMS.

TABLE P29.20-29.34
DEPARTMENT OF DEFENSE
REENLISTMENT RATES BY SERVICE

	A/ "UNADJUSTED" REENLISTMENT RATES FOR FIRST-TERM REGULARS					B/ "ADJUSTED" REENLISTMENT RATES FOR FIRST-TERM REGULARS				
	TOTAL DOD	ARMY	NAVY	MARINE CORPS	AIR FORCE	TOTAL DOD	ARMY	NAVY	MARINE CORPS	AIR FORCE
FY 1981										
ELIGIBLES	161,600	38,762	55,107	23,875	43,856	158,676	43,013	53,583	24,120	37,960
REENLISTMENTS	69,435	21,312	22,968	6,340	18,815	67,709	25,563	22,521	6,630	12,995
REENLISTMENT RATE	43.0%	55.0%	41.7%	26.6%	42.9%	42.7%	59.4%	42.0%	27.5%	34.2%
FY 1982										
ELIGIBLES	148,862	36,302	43,659	21,342	47,559	149,480	39,276	45,522	21,769	42,913
REENLISTMENTS	77,279	21,008	21,949	7,262	27,060	69,725	23,982	23,871	3,103	18,769
REENLISTMENT RATE	51.9%	57.9%	50.3%	34.0%	56.9%	46.6%	61.1%	52.4%	14.3%	43.7%
FY 1983										
ELIGIBLES	145,300	39,353	39,185	19,524	47,238	140,783	45,114	41,372	20,059	34,238
REENLISTMENTS	75,914	16,100	21,824	6,906	31,084	70,773	21,858	23,182	7,631	18,102
REENLISTMENT RATE	52.2%	40.9%	55.7%	35.4%	65.8%	50.3%	48.5%	56.0%	38.0%	52.9%
FY 1984										
ELIGIBLES	144,076	36,136	45,924	22,027	39,989	137,437	38,519	47,311	20,642	30,965
REENLISTMENTS	74,652	14,558	26,631	8,710	24,753	66,800	16,941	26,813	7,317	15,729
REENLISTMENT RATE	51.8%	40.3%	58.0%	39.5%	61.9%	48.6%	44.0%	56.7%	35.4%	50.8%
FY 1985										
ELIGIBLES	182,591	67,278	46,588	21,068	47,657	226,129	102,290	47,336	21,138	55,365
REENLISTMENTS	87,795	28,995	25,445	7,641	25,714	101,753	35,516	25,099	7,716	33,422
REENLISTMENT RATE	48.1%	43.1%	54.6%	36.3%	54.0%	45.0%	34.7%	53.0%	36.5%	60.4%

- A/ "UNADJUSTED REENLISTMENT RATE" - THE RATIO OF TOTAL REENLISTMENTS OCCURRING IN A GIVEN PERIOD TO TOTAL SEPARATIONS ELIGIBLE TO REENLIST IN THE SAME PERIOD, EXPRESSED AS A PERCENTAGE.
- B/ "ADJUSTED REENLISTMENT RATE" - THE "UNADJUSTED" RATE ADJUSTED TO EXCLUDE THE EFFECTS OF: (1) EARLY SEPARATIONS FOR IMMEDIATE REENLISTMENTS AND (2) OTHER EARLY DISCHARGES OF ELIGIBLES UNDER EARLY RELEASE PROGRAMS.

TABLE P29 20-29 34
DEPARTMENT OF DEFENSE
REENLISTMENT RATES BY SERVICE

	A/ "UNADJUSTED" REENLISTMENT RATES FOR CAREER REGULARS					B/ "ADJUSTED" REENLISTMENT RATES FOR CAREER REGULARS				
	TOTAL DOD	ARMY	NAVY	MARINE CORPS	AIR FORCE	TOTAL DOD	ARMY	NAVY	MARINE CORPS	AIR FORCE
FY 1981										
ELIGIBLES	179 828	77 981	39 196	12 958	49 693	180 628	88 944	36 879	12 275	42 530
REENLISTMENTS	137 482	56 580	28 551	9 567	42 784	138 606	67 542	26 518	8 880	35 666
REENLISTMENT RATE	76 5%	72 6%	72 8%	73 8%	86 1%	76 7%	75 9%	71 9%	72 3%	83 9%
FY 1982										
ELIGIBLES	180 434	81 029	38 533	11 606	49 266	175 586	86 759	38 479	11 825	38 523
REENLISTMENTS	147 186	63 673	30 305	8 855	44 403	142 727	69 353	30 579	9 068	33 727
REENLISTMENT RATE	81 6%	78 5%	78 6%	76 3%	90 1%	81 3%	79 9%	79 5%	76 7%	87 6%
FY 1983										
ELIGIBLES	182 336	88 731	35 988	10 212	47 405	183 455	99 265	38 605	10 401	35 184
REENLISTMENTS	147 846	66 269	29 377	8 740	43 460	149 281	76 803	32 264	8 961	31 253
REENLISTMENT RATE	81 1%	74 7%	81 6%	85 6%	91 7%	81 4%	77 4%	83 6%	86 2%	88 8%
FY 1984										
ELIGIBLES	181 496	86 204	40 904	12 216	42 172	180 235	94 698	41 392	11 240	32 905
REENLISTMENTS	143 487	62 396	32 763	10 292	38 036	142 421	70 890	33 441	9 314	28 776
REENLISTMENT RATE	79 1%	72 4%	80 1%	84 3%	90 2%	79 0%	74 9%	80 8%	82 9%	87 5%
FY 1985										
ELIGIBLES	116 028	23 023	41 407	10 732	40 866	153 899	50 863	40 044	10 518	52 474
REENLISTMENTS	99 854	21 956	32 692	8 916	36 290	116 156	27 918	31 638	8 702	47 898
REENLISTMENT RATE	86 1%	95 4%	79 0%	83 1%	88 8%	75 5%	54 9%	79 0%	82 7%	91 3%

- A/ "UNADJUSTED REENLISTMENT RATE" - THE RATIO OF TOTAL REENLISTMENTS OCCURRING IN A GIVEN PERIOD TO TOTAL SEPARATIONS ELIGIBLE TO REENLIST IN THE SAME PERIOD, EXPRESSED AS A PERCENTAGE
- B/ "ADJUSTED REENLISTMENT RATE" - THE "UNADJUSTED" RATE ADJUSTED TO EXCLUDE THE EFFECTS OF: (1) EARLY SEPARATIONS FOR IMMEDIATE REENLISTMENTS AND (2) OTHER EARLY DISCHARGES OF ELIGIBLES UNDER EARLY RELEASE PROGRAMS

TABLE P309A
 DEPARTMENT OF DEFENSE
 ACTIVE DUTY MILITARY PERSONNEL STRENGTHS BY REGIONAL AREA AND BY COUNTRY
 DECEMBER 31, 1985

REGIONAL AREA/COUNTRY	TOTAL	ARMY	NAVY	MARINE CORPS	AIR FORCE
U S TERRITORY AND SPECIAL LOCATIONS					
CONTINENTAL UNITED STATES (CONUS)	1,318,110	467,736	274,307	145,022	431,045
ALASKA	20,765	7,786	1,943	198	10,838
HAWAII	46,375	18,004	12,261	9,428	6,682
AMERICAN SAMOA	1	1	0	0	0
GUAM	9,015	30	4,571	386	4,028
JOHNSTON ATOLL	150	144	0	0	6
MIDWAY ISLANDS	10	0	10	0	0
PUERTO RICO	3,699	465	3,033	161	40
TRUST TERRITORY OF THE PACIFIC ISLANDS ^{1/}	63	48	2	0	13
VIRGIN ISLANDS OF THE U S	10	9	0	0	1
WARE ISLAND	7	0	0	0	7
TRANSIENTS	79,001	29,424	19,214	10,454	19,909
AFLOAT	188,259	0	187,209	1,050	0
TOTAL-U S TERR AND SPECIAL LOCATIONS	1,665,465	523,647	502,550	166,699	472,569
FOREIGN COUNTRIES					
1) WESTERN & SOUTHERN EUROPE					
AUSTRIA	30	6	0	22	2
BELGIUM*	3,117	1,326	120	34	1,637
CYPRUS	13	3	0	10	0
DENMARK*	61	8	20	10	23
FINLAND	20	5	2	11	2
FRANCE*	72	18	10	34	10
GERMANY (FED REPUBLIC & WEST BERLIN)*	247,349	205,985	346	90	40,928
GIBRALTAR	3	0	3	0	0
GREECE*	3,541	517	495	14	2,515
GREENLAND*	313	0	0	0	313
ICELAND*	3,127	2	1,758	94	1,273
IRELAND	10	2	0	8	0
ITALY*	14,926	4,133	4,846	253	5,694
LUXEMBOURG*	11	5	0	6	0
MALTA	6	0	0	6	0
NETHERLANDS*	2,882	918	17	10	1,937
NORWAY*	219	37	38	21	123
PORTUGAL*	1,702	71	383	13	1,235
SPAIN*	9,310	24	3,879	202	5,205
SWEDEN	14	1	2	6	5

^{1/} Includes five civic action teams of approximately 13 persons each (1 in Palau and 4 in the Federated States of Micronesia).

TABLE P309A
DEPARTMENT OF DEFENSE
ACTIVE DUTY MILITARY PERSONNEL STRENGTHS BY REGIONAL AREA AND BY COUNTRY

DECEMBER 31, 1985

REGIONAL AREA/COUNTRY	TOTAL	ARMY	NAVY	MARINE CORPS	AIR FORCE
SWITZERLAND	32	3	0	26	3
TURKEY*	5,024	1,222	97	19	3,686
UNITED KINGDOM*	28,952	210	2,346	358	26,038
VATICAN CITY	6	0	0	6	0
AFLOAT	14,839	0	12,123	2,516	0
TOTAL-WESTERN & SOUTHERN EUROPE	335,379	214,496	26,485	3,769	90,629
(*EUROPEAN NATO)	(320,606)	(214,476)	(14,355)	(1,158)	(90,617)
(*EUROPEAN NATO PERMANENTLY ASSIGNED)	(321,145)	(214,498)	(14,306)	(1,158)	(91,183)
(2) EAST ASIA AND PACIFIC					
AUSTRALIA	714	10	413	10	281
BURMA	11	3	0	6	2
CHINA	23	5	3	12	3
FIJI	1	0	1	0	0
HONG KONG	44	14	14	11	5
INDONESIA	45	10	12	12	11
JAPAN (INCLUDING OKINAWA)	47,632	2,204	7,323	21,922	16,183
MALAYSIA	22	9	1	9	3
NEW ZEALAND	69	1	52	6	10
PHILIPPINES	15,611	62	4,959	1,306	9,284
REPUBLIC OF KOREA	43,252	30,445	391	1,227	11,189
SINGAPORE	23	3	12	6	2
THAILAND	110	57	10	13	30
AFLOAT	12,000	0	11,587	413	0
TOTAL-EAST ASIA & PACIFIC	119,557	32,823	24,778	24,953	37,003
(3) AFRICA, NEAR EAST AND SOUTH ASIA					
AFGHANISTAN	4	0	0	4	0
ALGERIA	9	3	0	6	0
BAHRAIN	89	1	87	0	1
BANGLADESH	9	2	0	7	0
BURKINA FASO	6	0	0	6	0
BRITISH INDIAN OCEAN TERRITORY (INCLUDES DIEGO GARCIA)	1,244	0	1,237	0	7
CAMEROON	8	2	0	6	0
CHAD	15	3	0	12	0
CONGO	8	0	2	6	0
DJIBOUTI	6	0	0	6	0
EGYPT	1,404	1,288	30	27	59
ETHIOPIA	7	0	0	7	0
GABON	6	0	0	6	0

TABLE P309A
DEPARTMENT OF DEFENSE
ACTIVE DUTY MILITARY PERSONNEL STRENGTHS BY REGIONAL AREA AND BY COUNTRY
DECEMBER 31, 1985

REGIONAL AREA/COUNTRY	TOTAL	ARMY	NAVY	MARINE CORPS	AIR FORCE
GHANA	11	3	0	8	0
INDIA	40	6	5	24	5
ISRAEL	73	25	9	22	17
IVORY COAST	14	4	0	9	1
IRAQ	6	0	0	6	0
JORDAN	32	20	0	8	4
KENYA	46	10	12	21	3
KUWAIT	27	14	2	8	3
LEBANON	20	5	0	15	0
LIBERIA	19	8	2	7	2
MADAGASCAR	8	0	2	6	0
MALAWI	3	3	0	0	0
MALI	5	0	0	5	0
MAURITIUS	6	0	0	6	0
MOROCCO	52	14	3	22	13
NEPAL	7	3	0	4	0
NIGER	7	1	0	6	0
NIGERIA	16	3	0	10	3
OMAN	21	3	1	9	8
PAKISTAN	42	14	3	17	8
ST. HELENA (INCLUDES ASCENSION ISLAND)	2	0	0	0	2
SAUDI ARABIA	460	190	43	22	205
SENEGAL	13	1	2	10	0
SIERRA LEONE	6	0	0	6	0
SEYCHELLES	4	0	0	0	4
SOMALIA	35	22	4	6	3
SOUTH AFRICA	22	2	3	13	4
SRI LANKA	12	0	3	9	0
SUDAN	31	7	0	11	13
SYRIA	11	3	0	8	0
TANZANIA, UNITED REPUBLIC OF	8	0	0	8	0
TUNISIA	27	10	2	11	4
UNITED ARAB EMIRATES	12	5	1	5	1
YEMEN (SANAA)	13	6	0	4	3
ZAIRE	26	10	0	10	6
ZAMBIA	6	0	0	6	0
ZIMBABWE	8	2	0	6	0
AFLOAT	9,500	0	9,302	198	0
TOTAL--AFRICA, NEAR EAST & SOUTH ASIA	13,466	1,693	10,755	639	379

TABLE P309A
DEPARTMENT OF DEFENSE
ACTIVE DUTY MILITARY PERSONNEL STRENGTHS BY REGIONAL AREA AND BY COUNTRY

REGIONAL AREA/COUNTRY	TOTAL	ARMY	NAVY	MARINE CORPS	AIR FORCE
(4) WESTERN HEMISPHERE					
ANTIGUA	75	0	73	0	2
ARGENTINA	22	4	2	11	5
BAHAMAS THE	47	0	22	7	18
BARBADOS	19	10	2	7	0
BELIZE	4	3	1	0	0
BERMUDA	1,500	0	1,416	84	0
BOLIVIA	14	4	0	7	3
BRAZIL	52	11	9	27	5
CANADA	521	9	389	12	111
CHILE	19	3	1	13	2
COLOMBIA	29	8	4	13	4
COSTA RICA	16	6	0	10	0
CUBA (GUANTANAMO)	2,274	0	1,839	433	2
DOMINICAN REPUBLIC	18	4	2	10	2
ECUADOR	25	5	3	10	7
EL SALVADOR	69	37	0	28	4
GRENADA	7	1	0	6	0
GUATEMALA	21	6	0	14	1
GUYANA	6	0	0	6	0
HAITI	14	5	0	8	1
HONDURAS 2/	883	848	3	24	8
JAMAICA	14	1	3	10	0
MEXICO	33	10	3	14	6
NICARAGUA	13	2	0	10	1
PANAMA	8,865	5,868	445	191	2,361
PARAGUAY	13	3	1	7	2
PERU	35	4	11	13	7
SURINAME	3	3	0	0	0
TRINIDAD AND TOBAGO	6	0	0	6	0
URUGUAY	15	4	2	7	2
VENEZUELA	31	3	4	8	16
AFLOAT	818	0	818	0	0
TOTAL-WESTERN HEMISPHERE	15,481	6,862	5,053	996	2,570
(5) ANTARCTICA	133	34	99	0	0
(6) EASTERN EUROPE					
BULGARIA	12	2	0	8	2
CZECHOSLOVAKIA	13	1	0	9	3

2/ Number includes military personnel on TDY for planning and conduct of exercises.

TABLE P309A
DEPARTMENT OF DEFENSE
ACTIVE DUTY MILITARY PERSONNEL STRENGTHS BY REGIONAL AREA AND BY COUNTRY

DECEMBER 31, 1985					
REGIONAL AREA/COUNTRY	TOTAL	ARMY	NAVY	MARINE CORPS	AIR FORCE
GERMAN DEMOCRATIC REPUBLIC	52	45	0	7	0
HUNGARY	16	4	0	11	1
POLAND	14	3	0	10	1
ROMANIA	12	3	0	8	1
UNION OF SOVIET SOCIALIST REPUBLICS	61	7	5	42	7
YUGOSLAVIA	29	4	1	20	4
TOTAL-EASTERN EUROPE	209	69	6	115	19
(7) UNDISTRIBUTED					
ASHORE	689	11	194	0	484
TOTAL-UNDISTRIBUTED	689	11	194	0	484
TOTAL FOREIGN COUNTRIES	484.914	255.988	67.370	30.472	131.084
ASHORE	447.957	255.988	33.540	27.345	131.084
AFLOAT	36.957	0	33.830	3.127	0
TOTAL WORLDWIDE	2,150,379	779,635	569,920	197,171	603,653
ASHORE	1,925,163	779,635	348,881	192,994	603,653
AFLOAT	225,216	0	221,039	4,177	0

NOTE ASHORE INCLUDES TEMPORARILY SHORE-BASED

GLOSSARY OF TERMS

Active Duty: Full-time duty in the active service of a uniformed service, including duty on the active list, full-time training duty, annual training duty, and attendance while in the active service, at a school designated as a service school by law or by the Secretary concerned.

Armed Forces of the United States: Includes the Army, Navy, Air Force, Marine Corps, and Coast Guard, and all components thereof.

Career Regular: Individual serving on active duty in the regular component for a second or subsequent term of service or on an extended tour for which a reenlistment bonus was paid. An individual serving on an initial term of service in the regular component of a Service with at least 24 months of prior active duty with another Service will be considered a career regular.

Civil Functions: Functions primarily associated with the Civil Works program of the Army Corps of Engineers. This program encompasses planning, programming, designing, constructing, and operating Federal water resource projects for navigation, flood control, hydroelectric power, water supply, recreation, and related activities. Civil Functions also includes cemeterial workers (Army) and several conservation management employees (Air Force).

Continental United States: Unless otherwise qualified, means the 48 contiguous states and the District of Columbia.

Direct Hire Civilians: Employees hired directly by an agency of DoD. Includes foreign nationals hired by DoD to support DoD activities in their home countries.

Early Separations for Reenlistment: Separations prior to expiration of term of service for purpose of immediate reenlistment, as provided under service regulations.

Enlisted Member: A person enlisted, enrolled, or conscripted into the military service.

Enlistment: (1) A voluntary entrance into military service under enlisted status, as distinguished from induction through Selective Service.

(2) A period of time, contractual or prescribed by law, which enlisted members serve between enrollment and discharge.

First Term Regular: Individual serving on an initial term of service in the regular component of a Service, including those with prior active in a nonregular component of the same Service (e.g., as a reservist or inductee). An individual serving on an initial term of service in the regular component of a Service who has less than 24 months of prior active duty with another Service will also be considered a first term regular.

Indirect Hire Civilians: Foreign nationals assigned to support U.S. forces through contracts or agreements with foreign governments (or agencies thereof). These personnel are employees of the foreign governments involved. All indirect hires support military functions.

Officer: A commissioned or warrant officer.

OTHER DEPARTMENT OF DEFENSE ORGANIZATIONS

- *Office of the Secretary of Defense (OSD)
- *Joint Chiefs of Staff (JCS)
- *Inspector General of the Department of Defense

NOTE *Organizations Serviced by OSD

Department of Defense Agencies:

- *Defense Advanced Research Projects Agency (DARPA)
- **Defense Audiovisual Agency (DAVA)
- Defense Communications Agency (DCA)
- Defense Contract Audit Agency (DCAA)
- Defense Investigative Service (DIS)
- *Defense Legal Services Agency (DLSA)
- Defense Logistics Agency (DLA)
- Defense Mapping Agency (DMA)
- Defense Nuclear Agency (DNA)
- *Defense Security Assistance Agency (DSAA)
- *Strategic Defense Initiative Organization

Department of Defense Field Activities:

- *Armed Forces Information Service (AFIS)
- *Defense Information Services Activity (DISA)
- *Defense Medical Systems Support Center (DMSSC)
- *Defense Technology Security Administration (DTSA)
- *Department of Defense Dependents Schools (DODDS)
(Headquarters Only)
- *Office of Civilian Health and Medical Program
Office (OCHAMPUS)
- *Office of Economic Adjustment (OEA)
- *Washington Headquarters Services (WHS)

- *U.S. Court of Military Appeals
- Uniformed Services University of the Health Sciences (USUHS)

NOTE: * Organizations Serviced by OSD

** Effective September 30, 1985, the Defense
Audiovisual Agency was disestablished.

Reenlistment: Entry into active duty in the regular component of individuals with prior military service, either as regulars or as inductees of the same Service, either immediately or within 90 days after separation from a prior tour of active duty.

Reserve Components: The Army National Guard of the United States, Army Reserve, Naval Reserve, Marine Corps Reserve, Air National Guard of the United States, Air Force Reserve, and Coast Guard Reserve.

Separations, Eligible to Reenlist: Separations of individuals who, under current Service policies, are eligible (or available) for reenlistment in the regular components.

Service Academy Cadet or Midshipman: A person in training at one of the Service academies to become a commissioned officer.

Warrant Officer: A person who holds a commission or warrant in a warrant officer grade.

END

DATE
FILMED

11 = 86

DTIC