

MICROCOPY RESOLUTION TEST CHART

PHOTOGRAPH THIS SHEET

# UNDERWATER FACILITIES INSPECTIONS & ASSESSMENTS



AD-A166 232

DTIC ACCESSION NUMBER

LEVEL

LEVEL

NAVAL STATION  
ADAK, ALASKA  
FPO-1-81(5)

INVENTORY

DOCUMENT IDENTIFICATION

**DISTRIBUTION STATEMENT A**

Approved for public release;  
Distribution Unlimited

DISTRIBUTION STATEMENT

ACCESSION FOR

NTIS  GRA&I

DTIC  TAB

UNANNOUNCED

JUSTIFICATION

BY

DISTRIBUTION /

AVAILABILITY CODES

DIST

AVAIL AND/OR SPECIAL

A-1

DISTRIBUTION STAMP



**DTIC**  
**ELECTE**  
APR 15 1986  
**S** **D**  
**D**

ACCESSIONED

DATE RETURNED

DATE RECEIVED IN DTIC

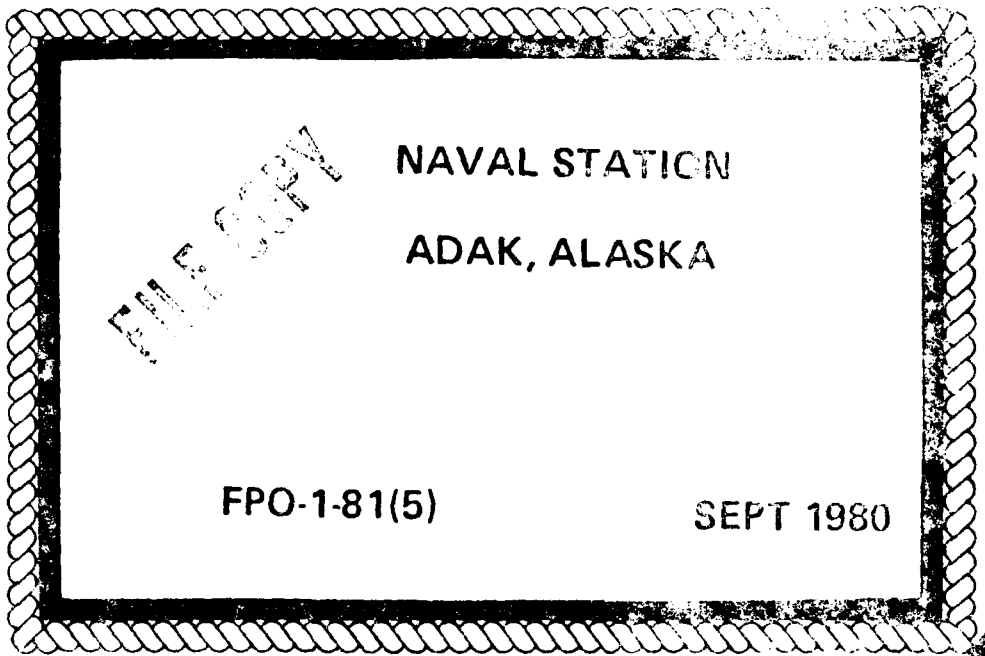
REGISTERED OR CERTIFIED NO.

PHOTOGRAPH THIS SHEET AND RETURN TO DTIC-DDAC



# UNDERWATER FACILITIES INSPECTIONS & ASSESSMENTS

AD-A166 232



OCEAN ENGINEERING AND CONSTRUCTION PROJECT OFFICE  
CHESAPEAKE DIVISION  
NAVAL FACILITIES ENGINEERING COMMAND  
WASHINGTON, D.C. 20374

**UNDERWATER FACILITIES  
INSPECTIONS  
AND  
ASSESSMENTS  
AT**

**FILE COPY**

**NAVAL STATION  
ADAK, ALASKA**

**FPO-1-81(5)**

**SEPT 1980**

**PERFORMED FOR:**

**OCEAN ENGINEERING AND CONSTRUCTION PROJECT OFFICE  
CHESAPEAKE DIVISION  
NAVAL FACILITIES ENGINEERING COMMAND  
WASHINGTON, D.C. 20374**

**INSPECTION PERFORMED  
AND REPORT PREPARED BY:**

**UNDERWATER CONSTRUCTION TEAM TWO  
PORT HUENEME, CA**

**DISTRIBUTION STATEMENT A**

**Approved for public release;  
Distribution Unlimited**

Unclassified

SECURITY CLASSIFICATION OF THIS PAGE

REPORT DOCUMENTATION PAGE

1a. REPORT SECURITY CLASSIFICATION  
Unclassified

1b. RESTRICTIVE MARKINGS

2a. SECURITY CLASSIFICATION AUTHORITY

3. DISTRIBUTION AVAILABILITY OF REP.  
Approved for public release;  
distribution is unlimited

2b. DECLASSIFICATION/DOWNGRADING SCHEDULE

4. PERFORMING ORGANIZATION REPORT NUMBER

5. MONITORING ORGANIZATION REPORT #  
FPO-1-81(5)

6a. NAME OF PERFORM. ORG.  
Underwater Construction  
Team Two

6b. OFFICE SYM

7a. NAME OF MONITORING ORGANIZATION  
Ocean Engineering  
& Construction  
Project Office  
CHESNAVFACENCOM

6c. ADDRESS (City, State, and Zip Code)  
Port Hueneme, CA

7b. ADDRESS (City, State, and Zip )  
BLDG. 212, Washington Navy Yard  
Washington, D.C. 20374-2121

8a. NAME OF FUNDING ORG.

8b. OFFICE SYM

9. PROCUREMENT INSTRUMENT INDENT #

8c. ADDRESS (City, State & Zip)

10. SOURCE OF FUNDING NUMBERS

PROGRAM ELEMENT #	PROJECT #	TASK #	WORK UNIT ACCESS #
-------------------	-----------	--------	--------------------

11. TITLE (Including Security Classification)

Underwater Facilities Inspection & Assessment at Naval Station Adak, Alaska

12. PERSONAL AUTHOR(S)

13a. TYPE OF REPORT

13b. TIME COVERED  
FROM TO

14. DATE OF REP. (YYMMDD) 15. PAGES  
80-9 52

16. SUPPLEMENTARY NOTATION

17. COSATI CODES  
FIELD GROUP SUB-GROUP

18. SUBJECT TERMS (Continue on reverse if nec.)  
Underwater inspection, Mooring inspection,  
Naval Station Adak, Alaska

19. ABSTRACT (Continue on reverse if necessary & identify by block number)

20. DISTRIBUTION/AVAILABILITY OF ABSTRACT  
SAME AS RPT.

21. ABSTRACT SECURITY CLASSIFICATION

22a. NAME OF RESPONSIBLE INDIVIDUAL  
Jacqueline B. Riley  
DD FORM 1473, 84MAR

22b. TELEPHONE 22c. OFFICE SYMBOL  
202-433-3881

SECURITY CLASSIFICATION OF THIS PAGE

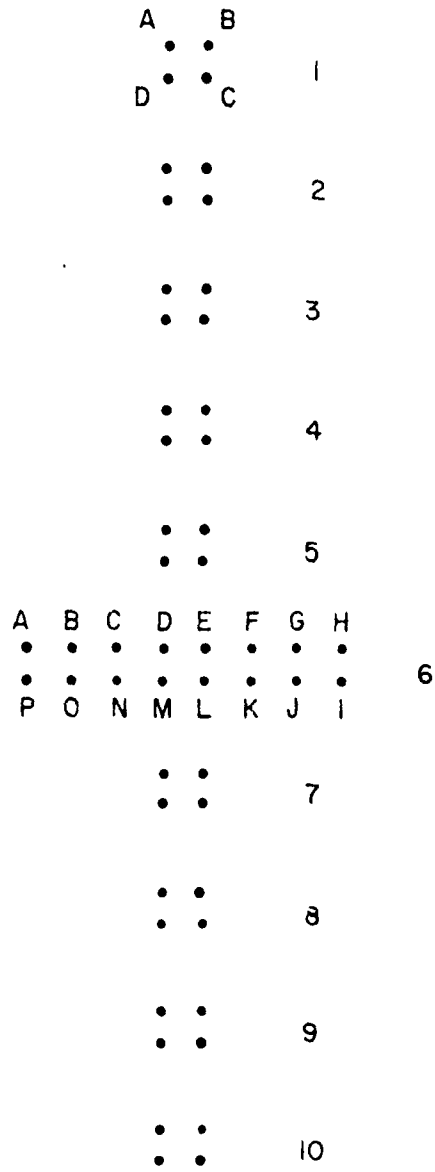
## INTRODUCTION

The underwater inspections reported herein were performed by Underwater Construction Team Two (UCT-2) at the request of and with funding from the Underwater Inspection Program managed by Naval Facilities Engineering Command, Chesapeake Division, Code FPO-1. This program is part of the Specialized Inspection Program initiated in FY 80 and directed by the Naval Facilities Engineering Command, (NAVFACENGCOM), Code 100 office. This centrally funded program establishes within NAVFACENGCOM the capability for coordinating all Navy efforts to inspect and assess the underwater condition of the Navy's major waterfront facilities.

The UCT-2 inspections were planned by FPO-1 as part of the Underwater Inspection Program. However, FPO-1 manpower limitations prevented the desired monitoring and integration of these inspections into the program, thus the inspection data was not recorded and reported in the manner established for the program. The underwater inspection report included herein is as received from UCT-2 with the following items added by FPO-1:

- Sketch of Pier P102
- Pier T-1403 pile plan
- Fuel Pier pile plan

RUNWAY APPROACH LIGHT PILINGS  
NAVAL STATION ADAK, ALASKA



SHORE

INSPECTION SUMMARY FOR ADAK RUNWAY APPROACH LIGHT PILINGS

1. Commencing 16 July 1980 UCT TWO Det Adak inspected the runway centerline approach lights at Naval Station Adak, Alaska. The inspection data is referenced to Y & D drawing number 1,090,364, sheet 2 of 11. The runway approach light support pilings are 16 inch diameter creosote treated timber piles with tar impregnated burlap cap covers. There were a total of 10 bents with four vertical and four batter piles per bent.

2. A total of 56 piles were inspected from mud line to the high water mark. Since no as-built drawings were available a numbering system was established in which bents were numbered 1 - 10 going shoreward and batter piles lettered consecutively (see attached sketch). From the mud line to the high water mark, all piles appear in excellent condition. There exists a moderate growth of barnacles, and sea anemones and heavy kelp growth in the splash zone. Of the 56 piles, five had moderate damage ranging from evidence of marine borers to structural damage from apparent dredge cutter head contact or ship impact. Inspection sheets of all piles are attached as tab (A) of this enclosure. A sketch of pile placement and the numbering system used on the data sheets is included as tab (B).

Enclosure (1)



DEPARTMENT OF THE NAVY  
UNDERWATER CONSTRUCTION TEAM TWO  
NAVAL CONSTRUCTION BATTALION CENTER  
PORT HUENEME, CALIFORNIA 93043

UCT2:DMF:vm  
5000  
9 December 1980

From: Officer in Charge, Underwater Construction Team TWO  
To: Commanding Officer, Naval Station Adak, Alaska

Subj: Report of Pier Inspections NAVSTA Adak

Ref: (a) UCT TWO OpOrd 5-80 of 8 Apr 80

Encl: (1) Inspection Data and Summary for Runway Approach Light Pilings  
(2) Supply Pier (P-102) Inspection Report with Photos #17  
(3) Supply Pier (T-1409) Inspection Report with Photos #1747  
(4) Fuel Pier (T-1403)

1. As tasked by reference (a), UCT TWO Det Adak conducted an inspection of the Runway Approach Light Pilings, Supply Pier T-1403, Supply Pier P-102, and the Fuel Pier at Naval Station Adak, Alaska.

2. Enclosures (1) through (4) are forwarded as the preliminary report on the subject project. A final report will be prepared and forwarded by CHESNAVFACENCOM.

T. H. CHRISTENSEN

Copy to:  
PWC Adak, AK  
COMCBPAC (w/o encls)  
COM31STNCR (w/o encls)  
CHESDIV (FPO-1) (2 copies)

INSPECTION SUMMARY FOR SUPPLY PIER #P-102

1. UCT TWO Det Adak, Alaska inspected Supply Pier P-102 commencing 21 July 1980. The inspection data is referenced to NAVFAC drawing number 6077532.
2. The Supply Pier is constructed of 16 inch diameter concrete reinforced piles. Each bent has either four piles (bents 1-9) or eight piles (remaining 29 bents). A total of 168 piles were inspected from the mud line to the high water mark. Of the 168 piles inspected, four had minor to moderate damage including some spalling and slight rust bleeding. In general the pilings of this recently constructed pier seem to be in excellent condition, and are only lightly covered with marine growth.
3. Inspection sheets of all piles are attached as tab (A) of this enclosure. Photos of this inspection are attached as tab (B).

Enclosure (2)

LOCATION: Adak, Alaska DATE: 16 July 1980 DIVERS: Johnston EO-2, Craig SM-3

PIER NAME/NO. Runway approach lights PILE YPE:  BEARING  FENDER  SHEET  
 PILE MATERIAL:  TIMBER  STEEL PIPE  STEEL SHEET  CONCRETE  STEEL "H" PILE

TIME OF DAY: 09:50 TIDE: WATER DEPTH FROM DATUM = GAUGE DEPTH - TIDE:

BENT NO.	PILE NO.	PILE DAMAGE			TYPE DAMAGE			GAUGE DIMENSIONS OF DAMAGE			COMMENTS			
		NO	MIN	MOD	MAJ	SEV	Mech	Bio	Func	DEPTH		HGT	WIDTH	FENETR
2	DB	XX												Moderate biological growth moderate kelp at splash zone
2	D	XX												" " " " "
3	AB	XX												" " " " "
3	A	XX												" " " " "
3	B	XX												" " " " "
3	C	XX												" " " " "
3	D	XX												" " " " "
4	A	XX												" " " " "
4	B	XX												" " " " "
4	C	XX												" " " " "
4	D	XX												" " " " "
5	A	XX												" " " " "
5	B	XX												" " " " "
5	C	XX												" " " " "

NO=NONE, MIN=MINIMUM, MOD=MODERATE, MAJ=MAJOR, SEV=SEVER, MECH=MECHANICAL, BIO=BIOLOGICAL, FUNC=FUNCTIONAL

LOCATION: Adak, Alaska DATE: 16 July 1980 DIVERS: Johnston EO-2, Craig SW-3

PIER NAME/NO. Runway approach lights PILE TYPE:  BEARING  FENDER  SHEET

PILE MATERIAL:  TIMBER  STEEL PIPE  STEEL SHEET  CONCRETE  STEEL "H" PILE

TIME OF DAY: 09:50 TIDE: WATER DEPTH FROM DATUM = GAUGE DEPTH - TIDE:

PIL NO.	PIL NO.	PIL NO.	PIL NO.	PIL NO.	PIL NO.	PIL NO.	PIL NO.	PIL NO.	PIL NO.	PIL NO.	PIL NO.	PIL NO.	GAUGE DIMENSIONS OF DAMAGE		COMMENTS
													HGT	WIDTH	
1	AB	AX													Moderate biological growth Heavy kelp at splash zone
1	A	XX													" " " " "
1	BA	XX													" " " " "
1	B	XX													" " " " "
1	CB	XX													" " " " "
1	C	XX													" " " " "
1	DB	XX													" " " " "
2	D	XX													" " " " "
2	AD	XX													" " " " "
2	A	XX													" " " " "
2	DB	XX													" " " " "
2	B	XX													" " " " "
2	CJ	XX													" " " " "
2	C	XX													" " " " "

NOTES: MIN=MINIMUM, NOT=NO, SEVER=SEVER, MECH=MECHANICAL, BIO=BIOLOGICAL, FUNC=FUNCTIONAL

LOCATION: Adak, Alaska DATE: 16 July 1980 DIVERS: Pierce UT-2, DeVille EG-3

PIER NAME/NO. RUBY APPROX. BEARS PILE TYPE:  BEARING  FENDER  SHEET

PILE MATERIAL:  TIMBER  STEEL PIPE  STEEL SHEET  CONCRETE  STEEL "H" PILE

TIME OF DAY: 12:12 TIDE: WATER DEPTH FROM DATUM = GAUGE DEPTH - TIDE:

BENT NO.	PILE NO.	FILE DAMAGE NO.	FILE DAMAGE	TYPE DAMAGE	SEV	MECH	BIC	FUNC	GAUGE DIMENSIONS OF DAMAGE			COMMENTS
									DEPTH	WIDTH	FENETR	
												Bio. growth 4" at surface
7	D	XK										" " " "
8	A3	CK										" " " "
8	B4	KA										" " " "
8	C3	KK										" " " "
8	DE	KL										" " " "
9	A	XC										" " " "
9	B	XX										" " " "
9	C	XC										" " " "
9	D	XX										" " " "
10	A	CL							2'	6"	1"	Damage at the mud line
10	B	XY										Bio. growth 4" on pile
10	C	CK										" " " "
10	D	KK										" " " "

NOVONE, MIN-MINIMUM, MOD-MODERATE, MAJ-MAJOR, SEV-SEVER, NECH=MECHANICAL, BIC=BIOL, FUNC=FUNCTIONAL



OPERATION OF THE U.S. NAVY  
 NAVAL CONSTRUCTION ENGINEERING CENTER  
 PORT HUENEME CALIFORNIA 93043

LOCATION: Adak, Alaska DATE: 22 July 1980 DIVERS: Hunter SM-1, Yarnell EACH

PIER NAME/NO. New supply pier; no. 5 PILE TYPE:  BEARING  FENDER  SHEET

PILE MATERIAL:  TIMBER  STEEL PIPE  STEEL SHEET  CONCRETE  STEEL "H" PILE

TIME OF DAY: 11:25 TIDE: WATER DEPTH FROM DATUM = GAUGE DEPTH - TIDE:

BENT NO.	PILE NO.	PILE DAMAGE			TYPE DAMAGE			GAUGE		DIMENSIONS OF DAMAGE		COMMENTS
		NO	MIN	MOD	SEV	MECH	BIO	FUNC	DEPTH	HGT	WIDTH	
11	3	XXX										
11	H											Light biological growth Moderate kelp at surf zone
10	A											" " " "
10	B	XXX										
10	C	XXX										
10	D-1											Light biological growth only
10	D-2	XXX										
10	E											Light biological growth only
10	F	XXX										
10	G											Light biological growth only Light biological growth Moderate kelp at surf zone
10	H											
	Bent 9 was not inspected because of its proximity to bent 10											
8	C											Light biological growth Moderate kelp at surf zone
8	D-1	XXX										

NO=NONE, MIN=MINIMUM, MOD=MODERATE, X=XXX, SEV=SEVER, MECH=MECHANICAL, BIO=BIOLOGICAL, FUNC=FUNCTIONAL

PERMANENT CODE: 3000 TEAM 200  
 NAVAL CONSTRUCTION BATTALION CENTER  
 PORT HUENEME CALIFORNIA 93043

LOCATION: Adak, Alaska DATE: 22 July 1980 DIVERS: Hunter SW-1, Yarnell EACN  
 PIER NAME/NO. New supply pier; no. 5 PILE TYPE:  BEARING  FENDER  SHEET  
 PILE MATERIAL:  TIMBER  STEEL PIPE  STEEL SHEET  CONCRETE  STEEL "H" PILE  
 TIME OF DAY: 11:25 TIDE: \_\_\_\_\_ WATER DEPTH FROM DATUM = GAUGE DEPTH - TIDE: \_\_\_\_\_

PENT NO.	PILE NO.	PILE DAMAGE		TYPE DAMAGE		GAUGE		DIMENSIONS OF DAMAGE		COMMENTS	
		NO. MIN	NO. MAX	SEV	MECH	BIO	FUNC	DEPTH	HGT		WIDTH
8	D-2		XX								Light biological growth only
8	E-1	XX									
8	E-2	XX									
8	F		XX								Light biological growth Moderate kelp at surf zone
7	C		XX								" " " "
7	D-1	XXX									
7	D-2	XX									
7	E	XXX									
7	F		XX								Light biological growth only
6	C		XX								" " " "
6	* D-F	XXX									
6	* D-A		XX								Light biological growth only
6	* E-P	XXX									
6	* E-A	XXX									

NONE=MINIMUM MOD=MODERATE, MAJ=MAJOR, SEV=SEVER, MECH=MECHANICAL, BIO=BIOLOGICAL, FUNC=FUNCTIONAL  
 \* F= Forward batter, A= After batter

ENGINEERING DIVISION  
 NAVAL CONSTRUCTION BATTALION CENTER  
 PORT HUENEME CALIFORNIA 93043

LOCATION: Adak, Alaska DATE: 22 July 1980 DIVERS: Hunter SW-1, Yarnell EACN

PIER NAME/NO: New supply pier; no. 5 PILE TYPE:  BEARING  FENDER  SHEET

PILE MATERIAL:  TIMBER  STEEL PIPE  STEEL SHEET  CONCRETE  STEEL "H" PILE

TIME OF DAY: 11:25 TIDE: \_\_\_\_\_ WATER DEPTH FROM DATUM = GAUGE DEPTH - TIDE: \_\_\_\_\_

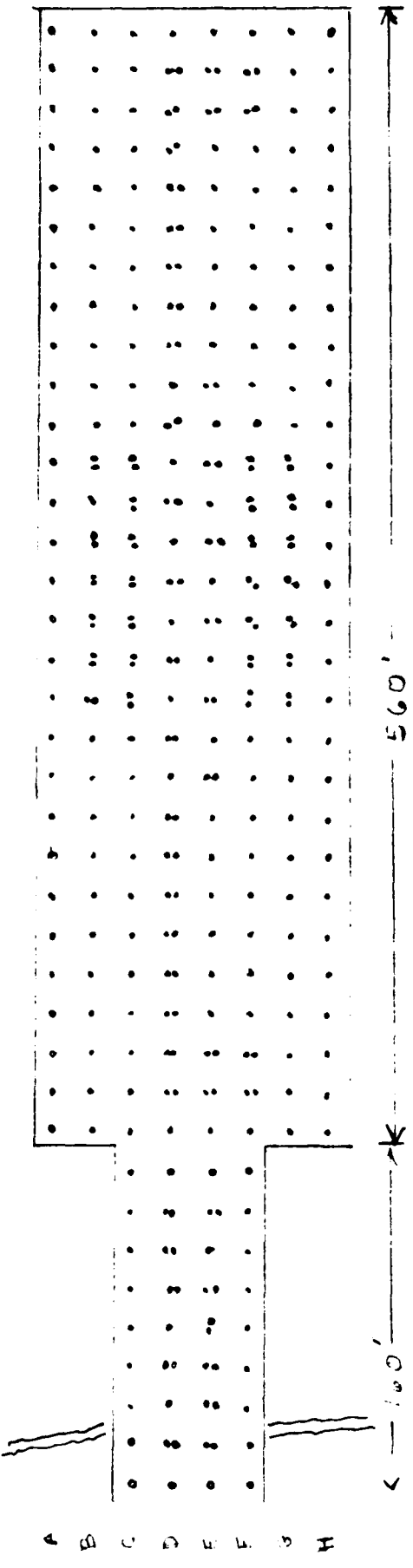
BENT NO.	PILE NO.	PILE DAMAGE			TYPE MECH	GAGE DEPTH	DIMENSIONS OF DAMAGE			COMMENTS												
		NO	MIN	MOD			MAC	SEV	BIG		FUNC	DEPTH	HGT	WIDTH	PENETH							
6	F	XX																				
5	C																					Light biological growth Light kelp at surf zone
5	D																					Light biological growth only
5	E-F	XXX																				
5	E-A	XXX																				
5	F																					Light biological growth Light kelp at surf zone
4	C																					" " " "
4	D-F	XXX																				
4	D-A																					Light biological growth only
4	E-F	XXX																				
4	E-A	XXX																				
4	F																					Light biological growth Light kelp at surf zone
3	C																					" " " "
3	D-F	XX																				Light biological growth only

NO=NONE, MIN=MINIMUM, MOD=MODERATE, MAJ=MAJOR, SEV=SEVER, MECH=MECHANICAL, BIO=BIOLOGICAL, FUNC=FUNCTIONAL  
 \* F= Forward batter, A= After batter



AREA SURVEY

1 2 3 4 5 6 7 8 9 10 11 12 13 14 15 16 17 18 19 20 21 22 23 24 25 26 27 28 29 30 31 32 33 34 35 36 37 38



FIELD PLAN - NOT TO SCALE

Each DOT = Pole, Double Dots = Butter Piles

U.S. DEPARTMENT OF COMMERCE  
 NATIONAL CENTER FOR ENVIRONMENTAL ENGINEERING  
 PORT HUENEME CALIFORNIA 93043

LOCATION: Adak, Alaska DATE: 22 July 1980 DIVERS: Hunter SW-1, Yarnell EACN

PIER NAME/NO. New supply pier; no. 5 PILE TYPE:  BEARING  FENDER  SHEET

PILE MATERIAL:  TIMBER  STEEL PIPE  STEEL SHEET  CONCRETE  STEEL "H" PILE

TIME OF DAY: 11:25 TIDE: \_\_\_\_\_ WATER DEPTH FROM DATUM = GAUGE DEPTH - TIDE: \_\_\_\_\_

BENT NO.	PILE NO.	PILE DAMAGE		TYPE DAMAGE	GAUGE DIMENSIONS OF DAMAGE			COMMENTS										
		NO	MIN		SEV	MECH	BIO		FUNC	DEPT	HGT	WIDTH	PENETR					
12	C	XXX																
12	D-1	XX																
12	D-2	XX																Light biological growth only
12	E	XXX																
12	F	XXX																
12	G			XX														Light biological growth only
12	H			XX														Light biological growth Moderate kelp at surf zone
11	A			XX														" " " "
11	B	XXX																
11	C	XXX																
11	D-1	XXX																
11	D-2			XX														Light biological growth only
11	E	XXX																
11	F	XXX																

NO=NONE, MIN=MINIMUM, MOD=MODERATE, MA=MAJOR, OR, SEV=SEVER, MECH=MECHANICAL, BIO=BIOLOGICAL, FUNC=FUNCTIONAL

OFFICE OF NAVAL ARCHITECTURE  
NAVAL CONSTRUCTION BATTALION CENTER  
PORT HUENEME CALIFORNIA 93043

LOCATION: Adak, Alaska DATE: 22 July 1980 DIVERS: Hunter SW-1, Yarnell EACN  
 PIER NAME/NO. New supply pier; no. 5 PILE TYPE:  BEARING  FENDER  SHEET  
 PILE MATERIAL:  TIMBER  STEEL PIPE  STEEL SHEET  CONCRETE  STEEL "H" PILE  
 TIME OF DAY: 11:25 TIDE: \_\_\_\_\_ WATER DEPTH FROM DATUM = GAUGE DEPTH - TIDE: \_\_\_\_\_

PNT NO.	PILE NO.	PILE DAMAGE			TYPE DAMAGE			GAUGE DIMENSIONS OF DAMAGE			COMMENTS												
		NC	MIN	MOD	MAJ	SEV	MECH	BIO	FUNC	DEPTH		HGT	WIDTH	PENETR									
14	P	XXX																					
14	G																						Light biological growth only
14	H																						Light biological growth
13	A																						Moderate kelp at surf zone
13	B																						" " " "
13	C																						" " " "
13	D-1																						" " " "
13	D-2																						" " " "
13	E																						Light biological growth only
13	F																						Light biological growth
13	G																						Moderate kelp at surf zone
12	A																						" " " "
12	B																						Light biological growth only

NC=NONE, MIN=MINIMUM, MOD=MODERATE, MAJ=MAJOR, SEV=SEVER, MECH=MECHANICAL, BIO=BIOLOGICAL, FUNC=FUNCTIONAL

LOCATION: Adak, Alaska DATE: 22 July 1980 DIVERS: Hunter SM-1, Yarnell SACN  
 PIER NAME/NO. New supply pier no. 5 PILE TYPE:  BEARING  FENDER  SHEET  
 PILE MATERIAL:  TIMBER  STEEL PIPE  STEEL SHEET  CONCRETE  STEEL "H" PILE  
 TIME OF DAY: 11:15 TIDE: \_\_\_\_\_ WATER DEPTH FROM DATUM = GAUGE DEPTH - TIDE: \_\_\_\_\_

DENT NO.	PILE NO.	PILE DAMAGE			TYPE DAMAGE			GAUGE DIMENSIONS OF DAMAGE			COMMENTS							
		NO	MIN	MOD	MAJ	SEV	MECH	BIO	FUNC	DEPTH		HGT	WIDTH	PENETR				
15	B	XXX																
15	C	XXX																
15	D-1	XXX																
15	D-2	XXX																
15	E	XXX																
15	F	XXX																
15	G																	Light biological growth only
15	H																	Light biological growth Moderate kelp at surf zone
14	A																	" " " "
14	B																	Light biological growth only
14	C	XXX																
14	D-1																	Light biological growth only
14	D-2	XXX																
14	E	XXX																

NO=NONE, MIN=MINIMUM, MOD=MODERATE, MAJ=MAJOR, SEV=SEVER, MECH=MECHANICAL, BIO=BIOLOGICAL, FUNC=FUNCTIONAL

NAVY ENGINEERING CENTER  
 NAVAL ARCHITECTURE BATTALION CENTER  
 FORT HUENEME CALIFORNIA 93043

LOCATION: Adak, Alaska DATE: 22 July 1980 DIVERS: Johnston EO-2, Wright BU-2

PIER NAME/NO. New supply pier; no. 5 PILE TYPE:  BEARING  FENDER  SHEET

PILE MATERIAL:  TIMBER  STEEL PIPE  STEEL SHEET  CONCRETE  STEEL "H" PILE

TIME OF DAY: 10:30 TIDE: \_\_\_\_\_ WATER DEPTH FROM DATUM = GAUGE DEPTH - TIDE: \_\_\_\_\_

BENT NO.	PILE NO.	PILE DAMAGE			TYPE	DAMAGE	GAUGE DEPTH	DIMENSIONS OF DAMAGE			COMMENTS	
		NO	MIN	MOD				MAJ	SEV	BIO		FUNC
17	E											
17	F											
17	G											Light biological growth only
17	H											Light biological growth Moderate kelp at surf zone
15	A											" " " "
16	B											
16	C											
16	D-1											
16	D-2											
16	E											Light biological growth only
16	F											
16	G											
16	H											Light biological growth Moderate kelp at surf zone
15	A											" " " "

NO=NONE, MIN=MINIMUM, MOD=MODERATE, MAJ=MAJOR, SEV=SEVERE, MECH=MECHANICAL, BIO=BIOLOGICAL, FUNC=FUNCTIONAL

LOCATION: Adak, Alaska DATE: 22 July 1980 DIVERS: Johnston EO-2, Wright BU-2

PIER NAME/NO. New supply pier; no. 5 PILE TYPE:  BEARING  FENDER  SHEET

PILE MATERIAL:  TIMBER  STEEL PIPE  STEEL SHEET  CONCRETE  STEEL "H" PILE

TIME OF DAY: 10:15 TIDE: \_\_\_\_\_ WATER DEPTH FROM DATUM = GAUGE DEPTH - TIDE: \_\_\_\_\_

BENT NO.	PILE NO.	PILE DAMAGE			TYPE DAMAGE			GAUGE DAMAGE		DIMENSIONS OF DAMAGE		COMMENTS
		NO	MIN	MAJ	SEV	MECH	BIO	FUNC	DEPTH	HGT	WIDTH	
12	A											Light biological growth Moderate kelp at surf zone
18	B	XXX										
18	C	XXX										
18	D-1	XXX										
18	D-2	XXX										
18	E											Light biological growth only
19	F	XXX										
19	G	XXX										
18	H											Light biological growth Moderate kelp at surf zone
17	A											" " " "
17	B	XXX										
17	C	XXX										
17	D-1											Light biological growth only
17	D-2	XXX										

NC=NONE, MTN=MINIMUM, MCT=MODERATE, MJ=MAJOR, SEV=SEVER, MECH=MECHANICAL, BIO= BIOLOGICAL, FUNC=FUNCTIONAL

NAVAL CONSTRUCTION BATTALION CENTER  
PORT HUENEME, CALIFORNIA 93043

LOCATION: Adak, Alaska DATE: 22 July 1980 DIVERS: Johnston EO-2, Wright BU-2

PIER NAME/NO. New supply pier; no. 5 PILE TYPE:  BEARING  FENDER  SHEET

PILE MATERIAL:  TIMBER  STEEL PIPE  STEEL SHEET  CONCRETE  STEEL "H" PILE

TIME OF DAY: 10:15 TIDE: \_\_\_\_\_ WATER DEPTH FROM DATUM = GAUGE DEPTH - TIDE: \_\_\_\_\_

BLNT NO.	PILE NO.	PILE DAMAGE		TYPE DAMAGE		GAUGE DAMAGE		DIMENSIONS OF DAMAGE		COMMENTS
		NO	NO	NO	NO	NO	NO	HGT	WIDTH	
20	D-2	XXX								
20	E	XX								
20	F	XXX								
20	G	XXX								
20	H		XX							Light biological growth Medium kelp at surf zone
19	A		XX							" " " "
19	B		XX							Light biological growth only
19	C	XXX								
19	D		XX							Light biological growth only
19	E-1		XX							" " " "
19	E-2	XXX								
19	F	XXX								
19	G	XXX								
19	H		X							Light biological growth Medium kelp at surf zone

NO=NONE, NI=MINOR, MD=MODERATE, MA=MAJOR, SEV=SEVERE, MECH=Mechanical, BIO=Biological, FUNC=FUNCTIONAL

LOCATION: Adak, Alaska DATE: 22 July 1980 DIVER: Johnston EO-2, Wright BU-2

PIER NAME/NO. New supply pier; no. 5 PILE TYPE:  BEARING  FENDER  SHEET

PILE MATERIAL:  TIMBER  STEEL PIPE  STEEL SHEET  CONCRETE  STEEL "H" PILE

TIME OF DAY: 09:50 TIDE: WATER DEPTH FROM DATUM = GAUGE DEPTH - TIDE:

PENT NO.	PILE NO.	PILE DAMAGE		TYPE	DAMAGE	GAUGE	DIMENSIONS OF DAMAGE		COMMENTS
		NO. MIN	NO. MAX				SEV	MCH	
21	B-F		XX						Light biological growth only
21	C-F	XX							
21	C-A	XX							
21	D		XX						Light biological growth only
21	E-1		XX						" " " "
21	E-2		XX						" " " "
21	F-F	XX							
21	F-A	XX							
21	G-F	XX							
21	H		XX						Light biological growth Moderate kelp at surf zone
20	A		XX						" " " "
20	B	XX							
20	C		XX						Light biological growth only
20	D-1	XX							

NO=NONE MIN=MINIMUM MCD=MODERATE MAJ=MAJOR SEV=SEVERE MECH=MECHANICAL F=FUNCTIONAL E=ENCLOSURE  
 \* F= Forward batter A= After batter

LOCATION: Adak, Alaska DATE: 22 July 1970 DIVERS: Johnston EG-2, Wright B1-2

PIER NAME/NO. New supply pier; no. 5 PILE TYPE:  BEARING  FLENDER  SHEET

PILE MATERIAL:  TIMBER  STEEL PIPE  STEEL SHEET  CONCRETE  STEEL "H" PILE

TIME OF DAY: 09:40 TIDE: WATER DEPTH FROM DATUM = GAUGE DEPTH - TIDE:

BENT PILE NO.	PILE DAMAGE		TYPE DAMAGE		GAUGE DIMENSIONS OF DAMAGE		COMMENTS
	NO	MINOR	MAJ	SEV	MECH	BIO	
	HGT	WIDTH	DEPTH				
22	B-F	XX					Light biological growth only
22	B-A	YXX					
22	C-F	YXX					
22	C-A	YXX					
22	D-1	YXX					
22	D-2	XX					Light biological growth only
22	E	XX					" " " "
22	F-F	YXX					
22	F-A	YXX					
22	G-F	YXX					
22	G-A	YXX					
22	H	XX					Light biological growth Moderate kept at surf zone
21	A	XX					" " " "
21	B-A	YXX					

NO=NONE, MIN=MINIMUM, MOD=MODERATE, MAJ=MAJOR, SEV=SEVERE, MECH=MECHANICAL, BIO=BIOLOGICAL, FUNC=FUNCTIONAL  
 \*F= Forward batter A= After batter





UNDESEATED  
 NAVAL CONSTRUCTION INFORMATION CENTER  
 PORT HUENEME CALIFORNIA 93043

LOCATION: Adak, Alaska DATE: 21 July 1981 DIVERS: DeMille EO-3, Duran EO-3

PIER NAME/NO. New supply pier; no. 5 PILE TYPE:  BEARING  FENDER  SHEET

PILE MATERIAL:  TIMBER  STEEL PIPE  STEEL SHEET  CONCRETE  STEEL "H" PILE

TIME OF DAY: 13:45 TIDE: WATER DEPTH FROM DATUM = GAUGE DEPTH - TIDE:

BENT NO.	PILE NO.	PILE DAMAGE			TYPE DAMAGE	SEV	MECH	BIG	FUNC	GAUGE DEPTH	DIMENSIONS OF DAMAGE			COMMENTS
		NO	MIN	MOD							MAJ	HGT	WIDTH	
26	* 1-A													
26	H													Light biological growth Moderate kelp at surf zone
25	A													" " " "
25	* B-A													
25	* B-F													
25	* C-A													Light biological growth only
25	* C-F													
25	D													
25	E-1													Light biological growth
25	E-2													
25	* F-A													
25	* F-F													Light biological growth only
25	* G-A													
25	* 7-F													

NO=NONE, MIN=MINIMU, MOD=MODERATE, MAJ=MAJOR, SEV=SEVER, MECH=MECHANICAL, BIO=BIOLOGICAL, FUNC=FUNCTIONAL  
 \* F = Form and batter A = After batter

WATER CONSTRUCTION TEAM TWO  
 NAVAL CONSTRUCTION BATTALION CENTER  
 PORT HUENEME, CALIFORNIA 93043

LOCATION: Adak, Alaska DATE: 21 July 1980 DIVERS: DeMille EC-3, Duran EO-3

PIER NAME/NO. New supply pier; no. 5 PILE TYPE:  BEARING  FENDER  SHEET

PILE MATERIAL:  TIMBER  STEEL PIPE  STEEL SHEET  CONCRETE  STEEL "H" PILE

TIME OF DAY: 13:00 TIDE: \_\_\_\_\_ WATER DEPTH FROM DATUM = GAUGE DEPTH - TIDE: \_\_\_\_\_

PILE NO.	TYPE	PILE DAMAGE			TYPE	DAMAGE	GAUGE DEPTH	DIMENSIONS OF DAMAGE			COMMENTS	
		MIN	MOD	MAJ				SEV	MECH	EIC		FUNC
27	* G-A											
27	* G-F											Light biological growth only
27	H											Light biological growth Moderate kelp at surf zone
26	A											" " " "
26	* B-F											
26	* B-A											
26	* C-F											
26	* C-A											Light biological growth only
26	D-1											
26	D-2											
26	E											Light biological growth only
26	* F-F											
26	* F-A											Light biological growth only
26	* G-F											

NO=NONE, MIN=MINIMUM, MOD=MODERATE, MAJ=MAJOR, SEV=SEVERE, MECH=MECHANICAL, BIO=BIOLOGICAL, FUNC=FUNCTIONAL  
 \* F=Forward Batter, A= After Batter

OPERATION AS CHECK TEAM TWO  
 NAVAL CONSTRUCTION BATTALION CENTER  
 PORT HUENEME, CALIFORNIA 93043

LOCATION: Adak, Alaska

DATE: 21 July 1980

DIVERS: DeKille EO-3, Duran EO-3

PIER NAME/NO. New supply pier; no. 5

PILE TYPE:  BEARING

FENDER

SHEET

PILE MATERIAL:  TIMBER

STEEL PIPE

STEEL SHEET

CONCRETE

STEEL "H" PILE

TIME OF DAY: 12:30

TIDE: \_\_\_\_\_

WATER DEPTH FROM DATUM = GAUGE DEPTH - TIDE: \_\_\_\_\_

BENT NO.	PILE NO.	PILE DAMAGE			TYPE DAMAGE			GAUGE DIMENSIONS OF DAMAGE			COMMENTS			
		NO	MIN	MOD	MAJ	SEV	MECH	BIO	FUNC	DEPTH		HGT	WIDTH	PENETR
28	E													Light biological growth
28	F								XXXX	10'	5"	8"		Spalding; rust bleed present no rebar exposed
26	G													Light biological growth
28	H													Light biological growth Moderate kelp at surf zone
27	A													" " " "
27	* B-A													" " " "
27	* B-F													Light biological growth only
27	* C-A													
27	* C-F													
27	D													Light biological growth only
27	E-1													" " " "
27	* E-2													
27	* F-A													
27	* F-F													

NO=NONE, MIN=MINIMUM, MCD=MODERATE, MAJ=MAJOR, SEV=SEVER, MECH=MECHANICAL, BIO=BIOLOGICAL, FUNC=FUNCTIONAL  
 \* A = After batter F = Forward batter

NAVAL CONSTRUCTION BATTALION CENTER  
PORT HUENEME CALIFORNIA 93043

LOCATION: Adak, Alaska DATE: 21 July 1980 DIVERS: Armstrong CE-1, Yoris CM-3

PIER NAME/NO. New supply pier ; no. 5 PILE TYPE:  BEARING  FENDER  SHEET

PILE MATERIAL:  TIMBER  STEEL PIPE  STEEL SHEET  CONCRETE  STEEL "H" PILE

TIME OF DAY: 12:20 TIDE: \_\_\_\_\_ WATER DEPTH FROM DATUM = GAUGE DEPTH - TIDE: \_\_\_\_\_

BENT NO.	PILE NO.	PILE DAMAGE			TYPE MECH	DAMAGE EIO	FUNC	DEPTH	DIMENSIONS OF DAMAGE			COMMENTS
		NO	MOD	MAJ					SEV	HGT	WIDTH	
29	A											Light biological growth Moderate kelp at surf zone
29	B	XXX										
29	C	XXX										
29	D-1	XXX										
29	D-2	XXX										
29	E	XXX										
29	F											Light biological growth only couze, no rebar exposed rust bleed is present
29	G		XXX				10'	8"	8"	2"		Light biological growth Moderate kelp at surf zone
28	A											" " " "
28	B	XXX										
28	C	XXX										
28	D-1	XXX										
28	D-2	XXX										

NO=NONE, MIN=MINIMUM, MOD=MODERATE, MAJ=MAJOR, SEV=SEVERE, MECH=MECHANICAL, EIO=BIOLOGICAL, FUNC=FUNCTIONAL

UNDERWATER CONSTRUCTION TEAM TWO  
 NAVAL CONSTRUCTION BATTALION CENTER  
 PORT HUENEME, CALIFORNIA 93043

LOCATION: Adak, Alaska DATE: 21 July 1980 DIVERS: Armstrong, CE-1, Voria, CM-3

PIER NAME/NO. New supply pier; no. 5 PILE TYPE:  BEARING  FENDER  SHEET

PILE MATERIAL:  TIMBER  STEEL PIPE  STEEL SHEET  CONCRETE  STEEL "H" PILE

TIME OF DAY: 12:20 TIDE: \_\_\_\_\_ WATER DEPTH FROM DATUM = GAUGE DEPTH - TIDE: \_\_\_\_\_

BENT NO.	PILE NO.	PILE DAMAGE		TYPE DAMAGE	GAUGE		DIMENSIONS OF DAMAGE		COMMENTS
		NO	MIN		DEPTH	DEPTH	HGT	WIDTH	
31	D-2	XXX							
31	E	XXX							
31	F	XXX							
31	G	XXX							
31	H		XX						Light biological growth Moderate kelp at surf zone
30	A		XX						" " " "
30	B		XX						Light biological growth only
30	C	XXX							
20	D-1	XXX							
30	D-2	XXX							
30	E	XXX							
30	F		XXX		XXX	10'	3"	6"	2"
30	G		XX						Light biological growth Light kelp at surf zone
30	H		XX						Light biological growth Moderate kelp at surf zone

NO=NONE, MIN=MINIMUM, MOD=MODERATE, MAJ=MAJOR, SEV=SEVER, MECH=MECHANICAL, BIO=BIOLOGICAL, FUNC=FUNCTIONAL

NAVAL CONSTRUCTION BATTALION CENTER  
PORT HUENEME, CALIFORNIA 93043

LOCATION: Adak, Alaska DATE: 21 July 1980 DIVERS: Gilliam HM-2, Yarnell EACH

PIER NAME/NO. New supply pier; no. 5 PILE TYPE:  BEARING  FENDER  SHEET

PILE MATERIAL:  TIMBER  STEEL PIPE  STEEL SHEET  CONCRETE  STEEL "H" PILE

TIME OF DAY: 10:30 TIDE: \_\_\_\_\_ WATER DEPTH FROM DATUM = GAUGE DEPTH - TIDE: \_\_\_\_\_

PNT NO.	PILE NO.	PILE DAMAGE			TYPE DAMAGE	GAUGE DEPTH	DIMENSIONS OF DAMAGE		COMMENTS
		NO	MIN	MOD			HGT	WIDTH	
33	H								Light biological growth Moderate kelp at surf zone
32	A		XX			35'	3'		Rough aggregate exposed not a smooth surface
32	B		XX			35'	3'		" " " "
32	C	XX							
32	D-1	XX							
32	D-2	XX							
32	E			XX					Light biological growth only
32	F	XX							
32	G			XX					Light biological growth only
32	H			XX					Light biological growth Moderate kelp at surf zone
31	A			XX					" " " "
31	B			XX					Light biological growth only
31	C	XX							
31	D-1	XX							

NO=NONE, MIN=MINIMUM, MOD=MODERATE, MAJ=MAJOR, SPV=SEVER, MECH=MECHANICAL, BIO=BIOLOGICAL, FUNC=FUNCTIONAL

NAVY CONSTRUCTION BATTALION CENTER  
PORT HUENEME CALIFORNIA 33043

LOCATION: Adak, Alaska DATE: 21 July 1980 DIVERS: Gilliam HM-2, Yarnell EACN

PIER NAME/NO. New supply pier; no. 5 PILE TYPE:  BEARING  FENDER  SHEET

PILE MATERIAL:  TIMBER  STEEL PIPE  STEEL SHEET  CONCRETE  STEEL "H" PILE

TIME OF DAY: 10:00 TIDE: \_\_\_\_\_ WATER DEPTH FROM DATUM = GAUGE DEPTH - TIDE: \_\_\_\_\_

BENT NO.	PILE NO.	PILE DAMAGE			TYPE DAMAGE	TYPE MECH	BIG	FUNC	GAUGE DEPTH	DIMENSIONS OF DAMAGE			COMMENTS
		NO	MIN	MOD						MAJ	SEV	HGT	
34	D-1												Light biological growth only
34	D-2												" " " "
34	E												" " " "
34	F												" " " "
34	G												" " " "
34	H												Light biological growth Moderate kelp at surf zone
33	A												" " " "
33	B												Light biological growth only
33	C												" " " "
33	D-1												" " " "
33	D-2												" " " "
33	E												" " " "
33	F												" " " "
33	G												" " " "

NO=NONE, MIN=MINIMUM, MOD=MODERATE, MAJ=MAJOR, SEV=SEVER, MECH=MECHANICAL, BIO=BIOLOGICAL, FUNC=FUNCTIONAL

WATER CONSTRUCTION BATTALION CENTER  
 PORT HUENEME, CALIFORNIA 93043

LOCATION: Adak, Alaska DATE: 21 July 1980 DIVERS: Gilliam HM-2, Yarnell EACN

PIER NAME/NO. New supply pier; no. 5 PIER TYPE:  BEARING  FENDER  SHEET

PILE MATERIAL:  TIMBER  STEEL PIPE  STEEL SHEET  CONCRETE  STEEL "H" PILE

TIME OF DAY: 09:20 TIDE: \_\_\_\_\_ WATER DEPTH FROM DATUM = GAUGE DEPTH - TIDE: \_\_\_\_\_

BENT NO.	FILE NO.	PIER DAMAGE		TYPE	DAMAGE	GAUGE	DIMENSIONS OF DAMAGE			COMMENTS
		NO	MIN				NO	NO	HGT	
36	B	XX								Light biological growth
36	A	XX								Light biological growth Moderate kelp at surf zone
35	A	XX								" " " "
35	B	XX								Light biological growth
35	C	XX								" " " "
35	D-1	XX								" " " "
35	D-2	XX								" " " "
35	E	XX								" " " "
35	F	XX								" " " "
35	G	XX								" " " "
35	H	XX								Light biological growth only
34	A	XX								Light biological growth Moderate kelp at surf zone
34	B	XX								Light biological growth only
34	C	XX								" " " "

NO=NONE, MIN=MINIMUM, MOD=MODERATE, MAJ=MAJOR, SEV=SEVERE, MFCU=MECHANICAL, RID=BIOLOGICAL, FUNC=FUNCTIONAL

UNDEVELOPED AREA  
 NAVY CONSTRUCTION BATTALION CENTER  
 PORT HUENEME CALIFORNIA 93043

LOCATION: Atak, Alaska DATE: 21 July 1980 DIVERS: Hunter SM-1, Johnston EQ-2

PIER NAME/NO: New supply pier; no. 5 PILE TYPE:  BEARING  FENDER  SHEET

PILE MATERIAL:  TIMBER  STEEL PIPE  STEEL SHEET  CONCRETE  STEEL "H" PILE

TIME OF DAY: 09:00 TIDE: \_\_\_\_\_ WATER DEPTH FROM DATUM = GAUGE DEPTH - TIDE: \_\_\_\_\_

PENT NO.	PILE NO.	PILE DAMAGE			TYPE DAMAGE	GAUGE DEPTH	DIMENSIONS OF DAMAGE			COMMENTS	
		NO	MIN	MOD			MAJ	SEV	MECH		HGT
37	E-2										Light biological growth
37	F-1										" " " "
37	F-2										" " " "
37	G										Light biological growth Moderate kelp growth at surface
37	H										" " " "
36	H										" " " "
36	G										" " " "
36	F-2										Light biological growth only
36	F-1										" " " "
36	E-2										" " " "
36	E-1										" " " "
36	D-2										" " " "
36	D-1										" " " "
36	C										" " " "

NO=NONE, MIN=MINIMUM, MOD=MODERATE, MAJ=MAJOR, SEV=SEVER, MECH=MECHANICAL, BIO=BIOLOGICAL, FUNC=FUNCTIONAL

LOCATION: Adak, Alaska DATE: 18 July 1980 DIVERS: Armstrong CE-1, Voris CM-3

PIER NAME/NO. Fuel Pier PILE TYPE:  BEARING  FENDER  SHEET  
 PILE MATERIAL:  TIMBER  STEEL PIPE  STEEL SHEET  CONCRETE  STEEL "H" PILE

TIME OF DAY: 12:30 TIDE: WATER DEPTH FROM DATUM = GAUGE DEPTH - TIDE:

BENT NO.	PILE NO.	PILE DAMAGE			TYPE	DAMAGE	GAUGE DEPTH	DIMENSIONS OF DAMAGE		COMMENTS
		NI	NO	SEV				HGT	WIDTH	
R	1	XX								Light biological growth water depth 5'
R	2	XX								Light biological growth water depth 9'
S	1	XX								Light biological growth water depth 5'
S	2	XX								Light biological growth water depth 7'
T	1	XX								Light biological growth water depth 3'
T	2	XX								Light biological growth water depth 4'
U	1	XX								Light biological growth water depth 3'
U	2	XX								" " " " "
W	1		XX				6"	3"	1.5"	Damage 3.5' above waterline
W	2	XX								Light biological growth water depth: 2'
X	1		XX				4"	4"	1.5"	Damage 1' above waterline
X	2		XX				2"	2"	1"	" " " " "

NO=NONE, MIN=MINOR, MOD=MODERATE, MAJ=MAJOR, SEV=SEVERE, MECH=MECHANICAL, BIO=BIOLOGICAL, FUNC=FUNCTIONAL

U.S. GEOLOGICAL SURVEY  
 WATER RESOURCES DIVISION  
 WEST PUEBLO OFFICE  
 WEST PUEBLO, COLORADO 81060

LOCATION: Adak, Alaska DATE: 18 July 1980 DIVERS: Armstrong CE-1, Voris CK-3

PIER NAME/NO. Fuel Pier PILE TYPE:  BEARING  FENDER  SHEET

PILE MATERIAL:  TIMBER  STEEL PIPE  STEEL SHEET  CONCRETE  STEEL "H" PILE

TIME OF DAY: 12:30 TIDE: WATER DEPTH FROM DATUM = GAUGE DEPTH - TIDE:

BENT NO.	PILE NO.	PILE DAMAGE NO./MIN./MOD./MAJ./SEV.	TYPE DAMAGE MECH. BIO/FUNC.	GAUGE DEPTH	DIMENSIONS OF DAMAGE		COMMENTS
					HGT	WIDTH	
44	J	XX					Moderate biological growth water depth 25' moderate kelp
5	1	XX					Moderate biological growth water depth 31' moderate kelp
5	2	XX					Moderate biological growth water depth 30' moderate kelp
6	1	XX					Moderate biological growth water depth 27' moderate kelp
6	2	XX					Moderate biological growth water depth 28' moderate kelp
6	1	XX					Moderate biological growth water depth 23' moderate kelp
6	2	XX					Moderate biological growth water depth 20' moderate kelp
7	1	XX					Moderate biological growth water depth 17' moderate kelp
7	2	XX					Moderate biological growth water depth 15' moderate kelp
8	1	XX					Moderate biological growth water depth 10' moderate kelp
8	2	XX					Moderate biological growth water depth 9' moderate kelp
9	1	XX					Moderate biological growth water depth 14' moderate kelp
9	2	XX					Light biological growth water depth 7'
9	1	XX					Light biological growth water depth 12'

NO=NONE, MIN=MINIMUM, MOD=MODERATE, MAJ=MAJOR, SEV=SEVERE, MECH=MECHANICAL, BIO=BIOLOGICAL, FUNC=FUNCTIONAL

LOCATION: Adak, Alaska DATE: 15 July 1980 DIVERS: Johnston EC-2, Duran EO-3

PIER NAME/NO. Fuel Pier PILE TYPE:  BEARING  FENDER  SHEET  
 PILE MATERIAL:  TIMBER  STEEL PIPE  STEEL SHEET  CONCRETE  STEEL "H" PILE

TIME OF DAY: 14:45 TIDE: WATER DEPTH FROM DATUM = GAUGE DEPTH - TIDE:

PIER NO.	PILE NO.	PILE DAMAGE	TYPE DAMAGE	GAUGE DEPTH	DIMENSIONS OF DAMAGE		COMMENTS
					BIC	FUNC	
34	C	XX					Moderate biological growth water depth 34' moderate kelp
35	D	XX					Moderate biological growth water depth 35' moderate kelp
36	D	XX					" " " " "
37	D	XX					" " " " "
38	D	XX					" " " " "
39	D	XX					Moderate biological growth water depth 32' moderate kelp
40	F	XX					Moderate biological growth water depth 30' moderate kelp
41	D	XX					" " " " "
42	D	XX					Moderate biological growth water depth 28' moderate kelp
43	A	XX					" " " " "
43	B	XX					Moderate biological growth water depth 25' moderate kelp
43	J	XX					" " " " "
44	A	XX					Moderate biological growth water depth 20' moderate kelp
44	D	XX					" " " " "

LOCATION: Adak, Alaska DATE: 15 July 1980 DIVERS: Johnston EO-2, Duran EO-3

PIER NAME/NO. Fuel Pier PILE TYPE:  BEARING  FENDER  SHEET

PILE MATERIAL:  TIMBER  STEEL PIPE  STEEL SHEET  CONCRETE  STEEL "H" PILE

TIME OF DAY: 14:45 TIDE: WATER DEPTH FROM DATUM = GAUGE DEPTH - TIDE:

PIL NO.	PIER NO.	PILE DAMAGE			TYPE DAMAGE	GAUGE DEPTH	DIMENSIONS OF DAMAGE		COMMENTS
		NO	MOD	MAJ			SEV	MECH	
28	A								Moderate biological growth water depth 38' moderate kelp
28	B								Moderate biological growth water depth 35' moderate kelp
28	C								Moderate biological growth water depth 34' moderate kelp
29		XX							
30	A								Moderate biological growth water depth 39' moderate kelp
30	B								Moderate biological growth water depth 34' moderate kelp
30	C								Moderate biological growth water depth 34' moderate kelp
31		XX							
32	A								Moderate biological growth water depth 38' moderate kelp
32	B								" " " " "
32	C								Moderate biological growth water depth 33' moderate kelp
33		XXX							
34	A								Moderate biological growth water depth 41' moderate kelp
34	B								Moderate biological growth water depth 40' moderate kelp

NO=NONE, MIN=MINIMUM, MOD=MODERATE, MAJ=MAJOR, SEV=SEVER, MECH=MECHANICAL, BIO=BIOLOGICAL, FUNC=FUNCTIONAL

UNDERWATER CONSTRUCTION TEAM LTD  
 NAVAL CONSTRUCTION BATTALION CENTER  
 PORT HUENEME, CALIFORNIA 93043

LOCATION: Adak, Alaska DATE: 15 July 1960 DIVERS: Johnston EO-2, Duran EO-3

PIER NAME/NO. Fuel Pier PILE TYPE:  BEARING  FENDER  SHEET

PILE MATERIAL:  TIMBER  STEEL PIPE  STEEL SHEET  CONCRETE  STEEL "H" PILE

TIME OF DAY: 14:45 TIDE: WATER DEPTH FROM DATUM = GAUGE DEPTH - TIDE:

BLNT NO.	PILE NO.	PILE DAMAGE			TYPE DAMAGE			GAUGE DIMENSIONS OF DAMAGE			COMMENTS		
		NO	MIN	MOD	MAJ	SEV	MECH	BIO	FUNC	DEPTH		HGT	WIDTH
20	C	XX											Excessive biological growth water depth 30' excessive kelp
21		XX											
22	A	XX											Excessive biological growth water depth 38' excessive kelp
22	B	XX											" " " " "
22	C	XX											" " " " " water depth 35'
23		XX											
24	A	XX											Excessive biological growth water depth 40' excessive kelp
24	B	XX											Excessive biological growth water depth 38' excessive kelp
24	C	XX											" " " " "
25		XX											
26	A	XX											Excessive biological growth water depth 38' excessive kelp
26	B	XX											Excessive biological growth water depth 36' excessive kelp
26	C	XX											Excessive biological growth water depth 38' excessive kelp
27		XX											

NO=NONE, MIN=MINOR, MOD=MODERATE, MAJ=MAJOR, SEV=SEVER, MECH=MECHANICAL, BIO=BIOLOGICAL, FUNC=FUNCTIONAL

UNDERWATER CONSTRUCTION TEAM TWO  
 NAVAL CONSTRUCTION BATTALION CENTER  
 PORT HUENEME, CALIFORNIA 93043

LOCATION: Adak, Alaska DATE: 15 July 1980 DIVERS: Sparks M-1, Kalu FH-1

PIER NAME/NO. \_\_\_\_\_ PILE TYPE:  BEARING  FENDER  SHEET

PILE MATERIAL:  TIMBER  STEEL PIPE  STEEL SHEET  CONCRETE  STEEL "H" PILE

TIME OF DAY: \_\_\_\_\_ TIDE: \_\_\_\_\_ WATER DEPTH FROM DATUM = GAUGE DEPTH - TIDE: \_\_\_\_\_

BENT NO.	PILE NO.	PILE DAMAGE		TYPE DAMAGE		GAUGE DIMENSIONS OF DAMAGE		COMMENTS	
		NO	MIN	SEV	Mech	BIO	DEPTH		HGT
17	A								Excessive biological growth
17	B								Excessive biological growth
17	C								Excessive biological growth
17	A								Excessive biological growth
17	B								Excessive biological growth
17	C								Excessive biological growth
18	A								Excessive biological growth
18	B								Excessive biological growth
18	C								Excessive biological growth
19	A								Excessive biological growth
19	B								Excessive biological growth
19	C								Excessive biological growth
20	A								Excessive biological growth
20	B								Excessive biological growth

NO=NONE, MIN=MINIMUM, MOD=MODERATE, MAJ=MAJOR, SEV=SEVER, MECH=MECHANICAL, BIO=BIOLOGICAL, FUNC=FUNCTIONAL

OPERABLE COMS SECTION TEAM TWO  
 NAVAL CONSTRUCTION BATTALION CENTER  
 PORT HUENEME, CALIFORNIA 93043

LOCATION: Adak, Alaska DATE: 15 July 1980 DIVERS: Sparks SW-1, Kulu PH-1

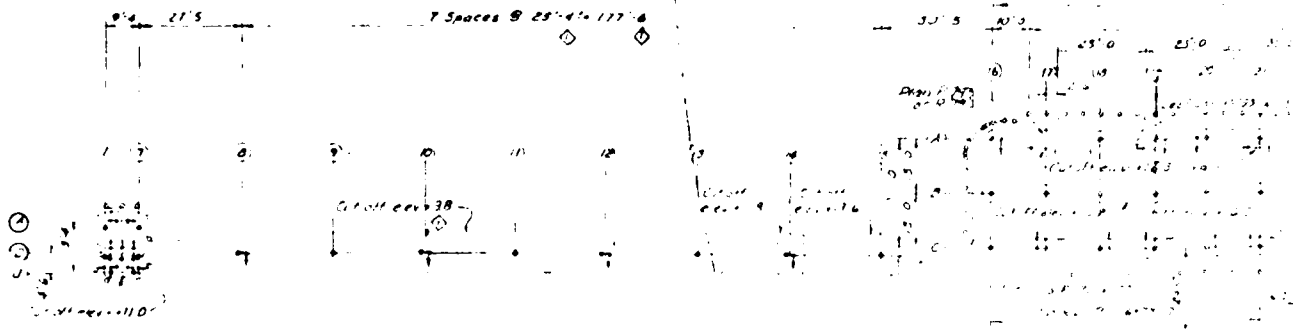
PIER NAME/NO. Fuel Pier PILE TYPE:  BEARING  FENDER  SHEET

PILE MATERIAL:  TIMBER  STEEL PIPE  STEEL SHEET  CONCRETE  STEEL "H" PILE

TIME OF DAY: 12:30 TIDE: WATER DEPTH FROM DATUM = GAUGE DEPTH - TIDE:

BENT NO.	PILE NO.	PILE DAMAGE			TYPE DAMAGE			GAUGE DIMENSIONS OF DAMAGE			COMMENTS			
		NI	NO	MOD	MAJ	SEV	MECH	BIG	FUNC	DEPTH		HGT	WIDTH	PENETR
1	A		XX											Slight biological growth water depth 25'
1	D		XX											" " " "
1	J		XX											" " " "
7	A		XX											" " " "
7	D		XX											Moderate biological growth water depth 25'
7	J		XX											" " " "
8	D		XX											" " " "
9	D		XX											" " " "
10	D		XX											" water depth 30'
11	D		XX											" " " "
12	D		XX											" " " "
13	D		XX											" " " "
14	D		XX											" " " "
15	D		XX											" " " "

NO=NONE, MIN=MINIMUM, MOD=MODERATE, MAJ=MAJOR, SEV=SEVER, MECH=MECHANICAL, BIO= BIOLOGICAL, FUNC=FUNCTIONAL



PILE PLAN  
 FUEL PIER  
 ADAK, ALASKA

Reproduced from  
 best available copy.

①





FROM NAVFAC DWG 71193 (1957)

3

INSPECTION SUMMARY FOR FUEL PIER ADAK, AK

1. UCT TWO Det Adak inspected the fuel pier, north, south catwalks and the approach pier at the Naval Station during the period 15 - 18 July 1980. The inspection data is referenced to Bureau of Yards and Docks drawing #711793.
2. The fuel pier is constructed of 16 inch diameter octagon shaped reinforced concrete piles. There is a total of 39 bents; nineteen bents with three bearing piles per bent on the main pier and 20 bents which support the north and south catwalks. Additionally, there are 17 bents of two piles per bent on the approach pier. A total of 89 piles were inspected from the mud line to the high water mark. In general, the pier is in excellent condition. No stress cracks were noted nor were any spalling and/or rust bleeding evident. Bent W and X on the approach pier do have minor damage due to spalling and flaking of concrete above the high water mark. All piles had biological growth in the splash zone consisting of kelp, barnacles and sea anemones ranging from one inch to eight inches thick.
3. Inspection sheets of all piles are attached as tab (A) of this enclosure. Photos of this inspection are attached as tab (B).

UNDERWATER DIVISION TEAM TWO  
 NAVAL CONSTRUCTION BATTALION CENTER  
 PORT HUENEME, CALIFORNIA 93043

LOCATION: Adak, Alaska DATE: 1<sup>st</sup> July 1980 DIVERS: Gilliam HM-2, Pierce UT-2

PIER NAME/NO. Old supply pier T103 PILE TYPE:  BEARING  FENDER  SHEET

PILE MATERIAL:  TIMBER  STEEL PIPE  STEEL SHEET  CONCRETE  STEEL "H" PILE

TIME OF DAY: 10:10 TIDE: WATER DEPTH FROM DATUM = GAUGE DEPTH - TIDE:

BENT NO.	PILE NO.	PILE DAMAGE			TYPE DAMAGE		GAUGE DEPTH	DIMENSIONS OF DAMAGE		COMMENTS
		NO	MIN	MOD	MAJ	SEV		BIO	FUNC	
21	12									Moderate biological growth Moderate kelp at splash zone
21	13									" " " " "
16	1									" " " " "
16	2									Core sample taken at 10'
16	12									Moderate biological growth Moderate kelp at splash zone
16	13									" " " " "
11	1									" " " " "
11	2									" " " " "
11	12									" " " " "
11	13									Core sample taken at 10'
6	1									Moderate biological growth Moderate kelp at splash zone
6	2									" " " " "
6	12									" " " " "
6	13									Core sample taken at 10'

NO=NONE, MIN=MINIMUM, MOD=MODERATE, MAJ=MAJOR, SEV=SEVER, MECH=MECHANICAL, BIO= BIOLOGICAL, FUNC=FUNCTIONAL

SEAFLOOR WATER GUNS CANNON TEAM TWO  
 NAVAL CONSTRUCTION BATTALION CENTER  
 PORT HUENEME CALIFORNIA 93043

LOCATION: Adak, Alaska DATE: 17 July 1980 DIVERS: Macha CE-1, Duncan PH-1

PIER NAME/NO. Old supply pier T1403 PILE TYPE:  BEARING  FENDER  SHEET

PILE MATERIAL:  TIMBER  STEEL PIPE  STEEL SHEET  CONCRETE  STEEL "H" PILE

TIME OF DAY: 14:40 TIDE: WATER DEPTH FROM DATUM = GAUGE DEPTH - TIDE:

BENT NO.	PILE NO.	PILE DAMAGE			TYPE DAMAGE			GAUGE DEPTH	DIMENSIONS OF DAMAGE		COMMENTS
		NO	MI	MCD	MAJ	SEV	MECH		BIO	HGT	
36	1										Moderate biological growth Moderate kelp at splash zone
36	2										" " " "
36	12										" " " "
36	13										" " " "
31	1										" " " "
31	2										" " " "
31	12										" " " "
31	13										" " " "
26	1										" " " "
26	2										" " " "
26	12										" " " "
26	13										" " " "
21	1										Core sample taken at 10'
21	2										Moderate biological growth Moderate kelp at splash zone

NO=NONE, MIN=MINIMUM, MOD=MODERATE, MAJ=MAJOR, SEV=SEVER, MECH=MECHANICAL, BIO=BIOLOGICAL, FUNC=FUNCTIONAL

UNDERWATER CONSTRUCTION TEAM TWO  
 NAVAL CONSTRUCTION BATTALION CENTER  
 PORT HUENEME, CALIFORNIA 93043

LOCATION: Adak, Alaska DATE: 17 July 1980 DIVERS: Macha CE-1, Dunce PH-1

PIER NAME/NO. Old supply pier T1403 PILE TYPE:  BEARING  FENDER  SH ET  
 PILE MATERIAL:  TIMBER  STEEL PIPE  STEEL SHEET  CONCRETE  STEEL "H" PILE

TIME OF DAY: 14:40 TIDE: WATER DEPTH FROM DATUM = GAUGE DEPTH - TIDE:

BENT NO.	PILE NO.	PILE DAMAGE			TYPE DAMAGE		GAUGE		DIMENSIONS OF DAMAGE			COMMENTS		
		NI	NO	MIN	MOD	MAJ	SEV	MECH	BIO	FUNC	DEPTH		HGT	WIDTH
57	12		XX											Moderate biological growth Moderate kelp at splash zone
57	13		XX											" " " " "
52	1		XX											" " " " "
52	2		XX											" " " " "
52	12		XX											" " " " "
52	13		XXX					10'	3'	3"	4"			Longitudinal crack Moderate biological growth Moderate kelp at splash zone
47	1		XX											" " " " "
47	2		XX											" " " " "
47	12		XX											" " " " "
47	13		XX											" " " " "
42	1		XX											" " " " "
42	2		XX											" " " " "
42	12		XX											" " " " "
42	13		XX											" " " " "

NO=NONE, MIN=MINIMUM, MOD=MODERATE, MAJ=MAJOR, SEV=SEVER, MECH=MECHANICAL, BIO= BIOLOGICAL, FUNC=FUNCTIONAL

NAVAL CONSTRUCTION BATTALION CENTER  
PORT HUENEME, CALIFORNIA 93043

LOCATION: Adak, Alaska DATE: 17 July 1980 DIVERS: Gilliam HM-2, Craig SW-3

PIER NAME/NO. Old supply pier T1403 PILE TYPE:  BEARING  FENDER  SHEET

PILE MATERIAL:  TIMBER  STEEL PIPE  STEEL SHEET  CONCRETE  STEEL "H" PILE

TIME OF DAY: 09:55 TIDE: \_\_\_\_\_ WATER DEPTH FROM DATUM = GAUGE DEPTH - TIDE: \_\_\_\_\_

BENT NO.	PILE NO.	PILE DAMAGE			TYPE MECH	TYPE DAMAGE	GAUGE DEPTH	DIMENSIONS OF DAMAGE			COMMENTS
		NO	MIN	MOD				MAJ	SEV	HGT	
60	11						33'	3"	.5"	1"	Crack at mud line
60	12	XX									Moderate biological growth
59	1	XX									Moderate kelp at splash zone
59	2	XX									" " " "
59	3	XX									" " " "
59	11	XX									" " " "
59	12	XX									" " " "
59	13	XX									" " " "
58	1	XX									" " " "
58	2	XX									" " " "
58	12	XX									" " " "
58	13	XX									" " " "
57	1	XX									" " " "
57	2	XX									" " " "

NO=NONE, MIN=MINIMUM, MOD=MODERATE, MAJ=MAJOR, SEV=SEVER, MECH=MECHANICAL, BIO= BIOLOGICAL, FUNC=FUNCTIONAL

LOCATION: Adak, Alaska DATE: 17 July 1980 DIVERS: Gillion HM-2, Craig SM-3

PIER NAME/NO. Old supply pier T1403 PILE TYPE:  BEARING  FENDER  SHEET

PILE MATERIAL:  TIMBER  STEEL PIPE  STEEL SHEET  CONCRETE  STEEL "H" PILE

TIME OF DAY: 09:55 TIDE: WATER DEPTH FROM DATUM = GAUGE DEPTH - TIDE:

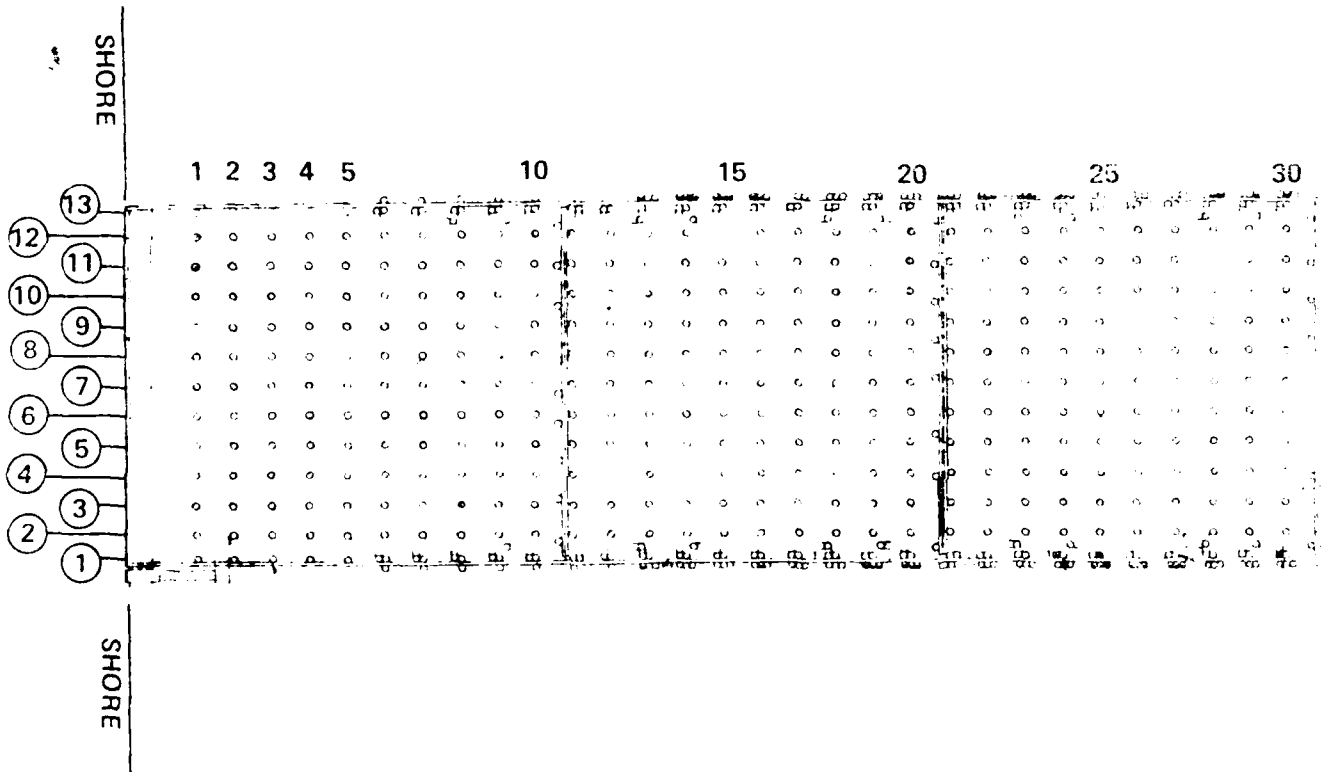
BENT NO.	PILE NO.	PILE DAMAGE			TYPE DAMAGE			GAUGE DIMENSIONS OF DAMAGE			COMMENTS	
		NO	MIN	MAX	SEV	MECH	BIO	FUNC	DEPTH	HGT		WIDTH
61	2	XX										Moderate biological growth
61	3	XX										Moderate kelp at splash zone
61	4	XX										"
61	5	XX										"
61	6	XX										"
61	7	XX										"
61	8	XX										"
61	9	XX										"
61	10	XX										"
61	11	XX										"
61	12	XX										"
60	1	XX										"
60	2	XX										"
60	3	XX										"

NC=NONE, MIN=MINIMUM, MOD=MODERATE, MAJ=MAJOR, SEV=SEVER, MECH=MECHANICAL, BIO=BIOLOGICAL, FUNC=FUNCTIONAL

STATION, A

SUPPLY PIER

PILE FL



PIER CONTAINS 61 BENTS

PILES ARE 16 INCH TIMBER

PIER CONTAINS FIVE FI

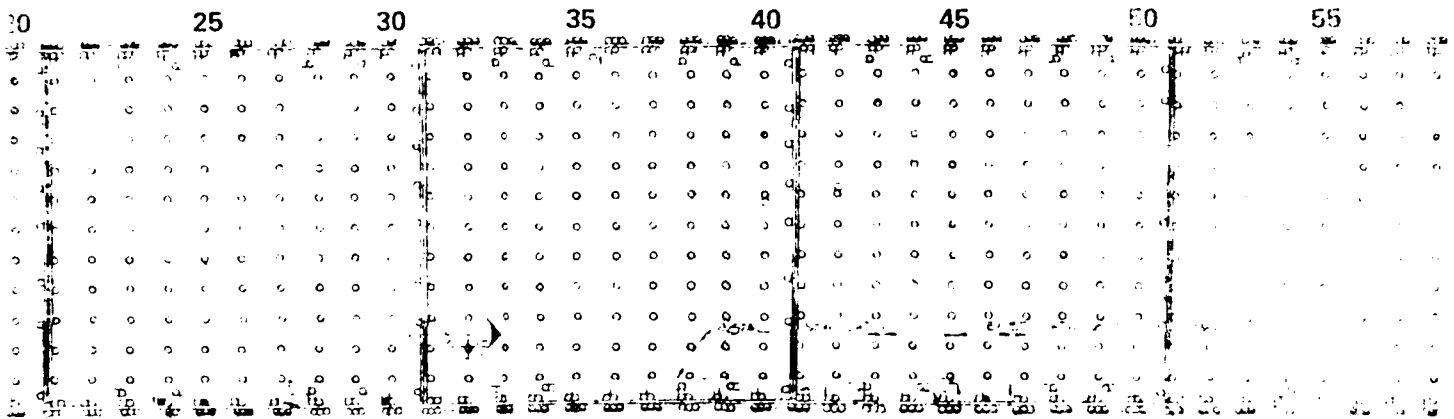
PILE DIMENSION

①

NAVAL STATION, ADAK, ALASKA

SUPPLY PIER T-1403

PILE PLAN



PIER CONTAINS 61 BENTS, 13 PILES PER BENT

PILES ARE 16 INCH TIMBER, CREOSOTE TREATED

PIER CONTAINS FIVE FIREBREAK WALLS

PILE DIMENSIONS 96' X 617'

TAKEN FROM NAVFAC DWG 60

②

40	45	50	55	60
0	0	0	0	0
1	1	1	1	1
2	2	2	2	2
3	3	3	3	3
4	4	4	4	4
5	5	5	5	5
6	6	6	6	6
7	7	7	7	7
8	8	8	8	8
9	9	9	9	9
10	10	10	10	10
11	11	11	11	11
12	12	12	12	12
13	13	13	13	13
14	14	14	14	14
15	15	15	15	15
16	16	16	16	16
17	17	17	17	17
18	18	18	18	18
19	19	19	19	19
20	20	20	20	20
21	21	21	21	21
22	22	22	22	22
23	23	23	23	23
24	24	24	24	24
25	25	25	25	25
26	26	26	26	26
27	27	27	27	27
28	28	28	28	28
29	29	29	29	29
30	30	30	30	30
31	31	31	31	31
32	32	32	32	32
33	33	33	33	33
34	34	34	34	34
35	35	35	35	35
36	36	36	36	36
37	37	37	37	37
38	38	38	38	38
39	39	39	39	39
40	40	40	40	40
41	41	41	41	41
42	42	42	42	42
43	43	43	43	43
44	44	44	44	44
45	45	45	45	45
46	46	46	46	46
47	47	47	47	47
48	48	48	48	48
49	49	49	49	49
50	50	50	50	50
51	51	51	51	51
52	52	52	52	52
53	53	53	53	53
54	54	54	54	54
55	55	55	55	55
56	56	56	56	56
57	57	57	57	57
58	58	58	58	58
59	59	59	59	59
60	60	60	60	60
61	61	61	61	61
62	62	62	62	62
63	63	63	63	63
64	64	64	64	64
65	65	65	65	65
66	66	66	66	66
67	67	67	67	67
68	68	68	68	68
69	69	69	69	69
70	70	70	70	70
71	71	71	71	71
72	72	72	72	72
73	73	73	73	73
74	74	74	74	74
75	75	75	75	75
76	76	76	76	76
77	77	77	77	77
78	78	78	78	78
79	79	79	79	79
80	80	80	80	80
81	81	81	81	81
82	82	82	82	82
83	83	83	83	83
84	84	84	84	84
85	85	85	85	85
86	86	86	86	86
87	87	87	87	87
88	88	88	88	88
89	89	89	89	89
90	90	90	90	90
91	91	91	91	91
92	92	92	92	92
93	93	93	93	93
94	94	94	94	94
95	95	95	95	95
96	96	96	96	96
97	97	97	97	97
98	98	98	98	98
99	99	99	99	99
100	100	100	100	100

3

TAKEN FROM NAVFAC DWG 6077S51

INSPECTION SUMMARY FOR SUPPLY PIER T-1403

1. Supply Pier T-1403 was inspected by UCT TWO Det Adak, Alaska on 17-18 July 1980. This inspection data is refernced to NAVFAC drawing 6077551. The bearing piles supporting pier T-1403 are 16 inch diameter timber. There is a total of 780 piles with five firebreak walls. All firebreak walls appear in excellent condition. Incremental bore samples were taken on bents 6, 11, 16, 21, to determine the extent of creosote protection remaining within the pilings. Results indicated that between two and two and one half inches of creosote protection exists within the pilings sampled. There is from one to three inches of marine growth (consisting of kelp, barnacles, sea anemone) on all piles throughout the pier.
3. Inspection sheets are attached as tab (A) of this enclosure. Photos of the inspection are attached as tab (B).

UNDERWATER CONSTRUCTION TEAM TWO  
 NAVAL CONSTRUCTION BATTALION CENTER  
 PORT HUENEME, CALIFORNIA 93043

LOCATION: Adak, Alaska DATE: 21 July 1980 DIVERS: Hunter SW-1, Johnston EO-2

PIER NAME/NO. New supply pier, no. 5 PILE TYPE:  BEARING  FENDER  SHEET

PILE MATERIAL:  TIMBER  STEEL PIPE  STEEL SHEET  CONCRETE  STEEL "H" PILE

TIME OF DAY: 06:40 TIDE: \_\_\_\_\_ WATER DEPTH FROM DATUM = GAUGE DEPTH - TIDE: \_\_\_\_\_

BENT NO.	PILE NO.	PILE DAMAGE			TYPE DAMAGE			GAUGE DIMENSIONS OF DAMAGE			COMMENTS			
		NO	MIN	MOD	MAJ	SEV	MECH	BIO	FUNC	DEPTH		HGT	WIDTH	PENETR
38	H													Light biological growth Moderate kelp at splash zone
38	G													" " " "
38	F													" " " "
38	E													" " " "
38	D													" " " "
38	C													" " " "
38	B													" " " "
38	A													" " " "
37	A													" " " "
37	B													" " " "
37	C													" " " "
37	D-1													Light biological growth only
37	D-2													" " " "
37	E-1													" " " "

NO=NONE, MIN=MINIMUM, MOD=MODERATE, MAJ=MAJOR, SEV=SEVER, MECH=MECHANICAL, BIO=BIOLOGICAL, FUNC=FUNCTIONAL

END  
FILMED

5-86

DTIC