

MICROCOPY

CHART

8

DEPARTMENT OF THE NAVY JUSTIFICATION OF ESTIMATES FOR FISCAL YEAR 1987



SUBMITTED TO CONGRESS FEBRUARY 1986

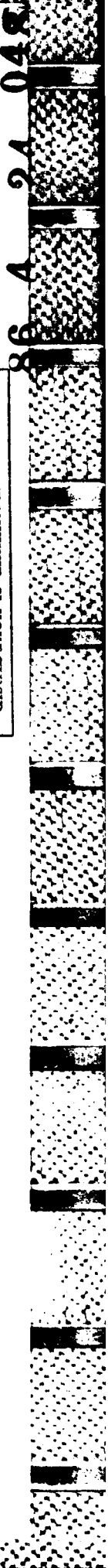
DTIC
ELECTE
APR 25 1986
S* A

RESERVE PERSONNEL,
MARINE CORPS

This document has been approved
for public release and sale; its
distribution is unlimited.

AD-A166 525

DTIC FILE COPY



REPORT DOCUMENTATION PAGE

1a. REPORT SECURITY CLASSIFICATION UNCLASSIFIED		1b. RESTRICTIVE MARKINGS	
2a. SECURITY CLASSIFICATION AUTHORITY		3. DISTRIBUTION / AVAILABILITY OF REPORT APPROVED FOR PUBLIC RELEASE DISTRIBUTION UNLIMITED	
2b. DECLASSIFICATION / DOWNGRADING SCHEDULE		4. PERFORMING ORGANIZATION REPORT NUMBER(S)	
6a. NAME OF PERFORMING ORGANIZATION OFFICE OF THE NAVY COMPTROLLER NCBG-2		6b. OFFICE SYMBOL (if applicable)	
7a. NAME OF MONITORING ORGANIZATION SAME AS 6a		7b. ADDRESS (City, State, and ZIP Code) SAME AS 6c	
6c. ADDRESS (City, State, and ZIP Code) OFFICE OF THE NAVY COMPTROLLER PROGRAM / BUDGET COORDINATION BRANCH WASHINGTON, D.C. 20350		9. PROCUREMENT INSTRUMENT IDENTIFICATION NUMBER	
8a. NAME OF FUNDING / SPONSORING ORGANIZATION SAME AS 6c		8b. OFFICE SYMBOL (if applicable)	
8c. ADDRESS (City, State, and ZIP Code) SAME AS 6c		10. SOURCE OF FUNDING NUMBERS	
		PROGRAM ELEMENT NO.	PROJECT NO.
		TASK NO.	WORK UNIT ACCESSION NO.
11. TITLE (Include Security Classification) DEPARTMENT OF THE NAVY JUSTIFICATION OF ESTIMATES FOR FISCAL YEAR 1987 RESERVE PERSONNEL, MARINE CORPS (U)			
12. PERSONAL AUTHOR(S)			
13a. TYPE OF REPORT FINAL	13b. TIME COVERED FROM 86-10-1 TO 87-9-30	14. DATE OF REPORT (Year, Month, Day) FEBRUARY, 1986	15. PAGE COUNT 103
16. SUPPLEMENTARY NOTATION			
17. COSATI CODES		18. SUBJECT TERMS (Continue on reverse if necessary and identify by block number)	
FIELD	GROUP	SUB-GROUP	
19. ABSTRACT (Continue on reverse if necessary and identify by block number)			
<p>THIS VOLUME CONTAINS JUSTIFICATION MATERIAL SUPPORTING THE PRESIDENT'S FISCAL YEAR 1987 BUDGET PRESENTATION TO CONGRESS.</p> <p><i>Included in summary of findings for analysis</i></p>			
20. DISTRIBUTION / AVAILABILITY OF ABSTRACT <input type="checkbox"/> UNCLASSIFIED/UNLIMITED <input checked="" type="checkbox"/> SAME AS RPT. <input type="checkbox"/> DTIC USERS		21. ABSTRACT SECURITY CLASSIFICATION	
22a. NAME OF RESPONSIBLE INDIVIDUAL ANGIE MORRIS		22b. TELEPHONE (Include Area Code) (202) 697-0747	22c. OFFICE SYMBOL NCBG-2

DEPARTMENT OF THE NAVY
RESERVE PERSONNEL, MARINE CORPS
JUSTIFICATION OF ESTIMATES FOR FISCAL YEAR 1987

TABLE OF CONTENTS

	PAGE
SECTION 1 - SUMMARY OF REQUIREMENTS BY BUDGET PROGRAM	1
SECTION 2 - INTRODUCTION	2
SECTION 3 - SUMMARY TABLES	
Summary of Personnel in Paid Status	4
Reserve Component Personnel on Active Duty	6
Monthly Personnel Strength Plan)	
Fiscal year 1987	7
Fiscal year 1986	8
Fiscal year 1985	9
Schedule of Gains and Losses to Selected Reserve Strengths)	
Summary of Entitlements by Activity and Subactivity	10
Analysis of Appropriation Changes	12
Summary of Basic Pay and Retired Pay Accrual	16
Summary of Basic Allowance for Quarters and Variable Housing Allowance Costs	21
Summary of Travel Costs	23
Schedule of Increases and Decreases	25
Schedule of Increases and Decreases	27
SECTION 4 - DETAIL OF MILITARY PERSONNEL ENTITLEMENTS	
Budget Activity One: Unit and Individual Training, and Support	28
Pay Group A	35
Pay Group B	41
Pay Group C	47
Pay Group F	51
Pay Group P	54
Pay Group D	54

and Support

Accession For	
NTS	GMA&I
DPIC	TAB
Unannounced	
Justification	
By	
Distribution/	
Availability Codes	
Dist	Avail and/or Special
A1	



DEPARTMENT OF THE NAVY
RESERVE PERSONNEL, MARINE CORPS
JUSTIFICATION OF ESTIMATES FOR FISCAL YEAR 1987

TABLE OF CONTENTS (CONT.)

	PAGE
Budget Activity Two: Other Training and Support	
Mobilization Training	56
School Training	60
Special Training	66
Administration and Support	75
Educational Benefits	90
Platoon Leaders Class	93
Junior ROTC	97
 SECTION 5 - SPECIAL ANALYSIS	
Platoon Leaders Class	101

SECTION 1 - SUMMARY OF REQUIREMENTS BY BUDGET PROGRAM

RESERVE PERSONNEL, MARINE CORPS

FY 1987

(THOUSANDS OF DOLLARS)

	FY 1985	FY 1986	FY 1987
DIRECT PROGRAM			
UNIT AND INDIVIDUAL TRAINING	\$191,019	\$198,821	\$208,777
OTHER TRAINING AND SUPPORT	\$78,911	\$88,478	\$106,023
TOTAL DIRECT PROGRAM	\$269,930	\$287,299	\$314,800
REIMBURSABLE PROGRAM			
UNIT AND INDIVIDUAL TRAINING	\$700	\$700	\$700
OTHER TRAINING AND SUPPORT	-	-	-
TOTAL REIMBURSABLE PROGRAM	\$700	\$700	\$700
TOTAL PROGRAM			
UNIT AND INDIVIDUAL TRAINING	\$191,719	\$199,521	\$209,477
OTHER TRAINING AND SUPPORT	\$78,911	\$88,478	\$106,023
TOTAL OBLIGATIONS	\$270,630	\$287,999	\$315,500

Section 2 - Introduction
Reserve Personnel, Marine Corps

Sharing fully in the Total Force concept, the Marine Corps Reserve provides one-third of the manpower and one-fourth of the structure available for mobilization. Our Ready Reserve, consisting of the Selected Marine Corps Reserve (SMCR), and Individual Ready Reserve (IRR), is the primary source of this manpower. The preponderance of SMCR personnel form the Fourth Marine Division (MarDiv), Fourth Marine Aircraft Wing (MAW) and Fourth Force Service Support Group (FSSG), balancing combat, combat support and combat service support forces which are ready to provide the trained units and individuals needed to bring the active Fleet Marine Forces to full wartime capability. The remainder of the SMCR consists of Individual Mobilization Augmentees (IMA's) who fill mobilization billets within the Active Force which are considered critical requirements within the first 10 days of mobilization. The IRR consists of members of the Ready Reserve who are not required to attend mandatory drills or training, but may attend on a voluntary basis. IRR are subject to mobilization. This Budget includes an increase in FY 1987 for a one day involuntary recall of the IRR for annual screening.

The purpose of the Reserve Personnel, Marine Corps (RPMC) appropriation is to provide the required funding to assure accomplishment of the Marine Corps Reserve mission to provide trained units to selectively augment and reinforce the Active Forces, provide a Marine Amphibious Brigade (MAB) Headquarters or, if augmentation/reinforcement is not ordered provide a Fourth Division, Fourth Wing and Fourth FSSG.

In addition to the employment of SMCR units, IMA's will support key mobilization billets within the Active Force on, or shortly after, Mobilization Day (M-Day). Members of the IRR serve as the prime source of qualified individuals to fill shortfalls in Active and Reserve units.

The Marine Corps Reserve initiated aggressive management actions in June of 1984 to "reverse" a downward trend in strength and to increase initial active duty for training to train new individuals to fill critical skill shortages in units created by a more stringent screening process. The additional non-prior service input and increased retention efforts are bringing the Marine Corps Reserve Manpower Program on track, and will allow achievement of wartime strength by FY 1990. The SMCR attained 99.5 percent of the planned FY 1985 end strength of 41,757, finishing the year at 41,586, and the Marine Corps Reserve mobilization potential and unit readiness experienced consistent improvements.

The FY 1987 average strength increases from 41,900 in FY 1986 to 42,800 in FY 1987. The Marine Corps Selected Reserve end strength will increase by 1,381 from 43,019 in FY 1986 to 44,400 in FY 1987. The increases in strength are for support of the standup of three Light Armored Vehicle (LAV) companies four TOW platoons, an Adversary Aircraft (KFIR) Squadron and fill of existing unit personnel shortages.

In addition, personnel readiness has been enhanced by expansion of the Reserve Full-Time Support (FTS) program. FTS strength is budgeted at 1,782 in FY 1987 and will increase to 1,900 by FY 1991. The majority of the FTS end strength increase of 307 in FY 1987 is for support of the Fourth Marine Aircraft Wing (4th MAW), for standup of a Marine Aerial Refueler Transport Squadron, the Adversary Aircraft (KFIR) Squadron and for training support personnel deficiencies in other aircraft squadrons. Additional Full Time Support personnel are requested to support standup of the LAV companies, and the TOW platoons, FSSG Maintenance Units and Headquarters Management Personnel.

New legislation in the FY 1984 Defense Authorization Act (P.L. 98-94) provided for the establishment of accrual accounting for the military retirement system effective 1 October 1984 (FY 1985). Under the retired pay accrual concept, the defense budget no longer reflects payments to retirees. These payments are made from a Military Retirement Trust Fund under the Income Security function of the Federal budget. The military service budgets now include only the accruing liability for military personnel not yet retired. This legislative change increased the Marine Corps budget submission dramatically in FY 1985 and beyond.

SECTION 3 - SUMMARY TABLES

DEPARTMENT OF THE NAVY
RESERVE PERSONNEL, MARINE CORPS
SUMMARY OF PERSONNEL

PERSONNEL IN A PAID STATUS

PAY/TRAINING GROUP	NO. OF DRILLS	NUMBER OF ACTIVE DUTY DAYS TRAINING	FY 1985			FY 1986			FY 1987			FY 1988		
			BEGIN	AVERAGE	END	AVERAGE	END	AVERAGE	END	AVERAGE	END	AVERAGE	END	
PAID DRILL TRAINING														
PAY GROUP A - OFFICERS	48	15	2,560	2,538	2,611	2,699	2,760	2,834	2,870	2,902	2,970			
PAY GROUP A - ENLISTED	48	15	32,299	31,440	32,537	33,082	33,462	34,269	34,825	35,239				
SUB-TOTAL, PAID DRILL			34,859	33,978	35,148	35,781	36,222	37,198	37,139	37,727	38,209			
RESERVE ENLISTMENT PROGRAM (REP)														
PAY GROUP F - ENLISTED		155	4,101	4,045	3,980	3,650	4,100	4,119	4,138	4,121	4,139			
PAY GROUP P - ENLISTED	36		62	251	160	205	181	199	181	205	181			
SUB-TOTAL, RESERVE ENLISTMENT			4,163	4,296	4,140	3,855	4,281	4,318	4,319	4,326	4,320			
INDIVIDUAL MOBILIZATION AUGMENTEES (IMA)														
PAY GROUP A - OFFICERS	48	15	259	321	293	332	331	344	361	378	395			
PAY GROUP A - ENLISTED	48	15	298	320	620	331	328	341	349	354	366			
SUB-TOTAL			557	641	913	663	659	685	710	732	761			
PAY GROUP B - OFFICERS	24	15	162	183	184	164	206	217	228	239	250			
PAY GROUP B - ENLISTED	24	15	41	51	44	138	123	144	164	185	205			
SUB-TOTAL			203	234	228	302	329	361	392	424	455			

DEPARTMENT OF THE NAVY
RESERVE PERSONNEL, MARINE CORPS
SUMMARY OF PERSONNEL (cont.)

PERSONNEL IN A PAID STATUS (CONT.)

PAY TRAINING GROUP	NO. OF DRILLS	NO. OF ATD TRNG DAYS	FY 1985			FY 1986			FY 1987			FY 1988		
			BEGIN	AVERAGE	END	BEGIN	AVERAGE	END	BEGIN	AVERAGE	END	BEGIN	AVERAGE	END
PAY GROUP C - OFFICERS	12	15	19	12	14	21	26	30	33	33	33	33	33	
PAY GROUP C - ENLISTED	12	15	8	12	8	24	27	26	25	28	28	30	30	
SUB-TOTAL			27	24	22	45	53	56	58	61	61	63	63	
PAY GROUP D - OFFICERS		15	4	6	1	0	0	0	0	0	0	0	0	
PAY GROUP D - ENLISTED		15	3	0	0	0	0	0	0	0	0	0	0	
SUB-TOTAL			7	6	1	0	0	0	0	0	0	0	0	
TOTAL IMA'S			794	905	1,164	1,010	1,041	1,102	1,160	1,217	1,217	1,279	1,279	
FULL-TIME ACTIVE DUTY														
OFFICERS		365	171	189	206	223	235	262	290	301	301	315	315	
ENLISTED		365	632	773	928	1,031	1,240	1,320	1,492	1,529	1,529	1,577	1,577	
SUB-TOTAL FULL-TIME ACTIVE DUTY			803	962	1,134	1,254	1,475	1,582	1,782	1,830	1,830	1,892	1,892	
TOTAL SELECTED RESERVE OFFICERS			3,175	3,249	3,309	3,439	3,558	3,687	3,782	3,853	3,853	3,963	3,963	
TOTAL SELECTED RESERVE ENLISTED			37,444	36,892	38,277	38,461	39,461	39,113	40,618	41,247	41,247	41,737	41,737	
TOTAL SELECTED RESERVE (PERSONNEL IN A PAID STATUS)			40,619	40,141	41,586	41,900	43,019	42,800	44,400	45,100	45,100	45,700	45,700	
PERSONNEL IN A NON-PAID STATUS														
TOTAL INDIVIDUAL READY RESERVE OFFICERS			3,242	3,358	3,567	3,763	3,640	3,732	3,850	3,980	3,980	4,200	4,200	
TOTAL INDIVIDUAL READY RESERVE ENLISTED			45,187	43,760	44,288	46,272	48,360	49,852	51,150	54,420	54,420	55,800	55,800	
TOTAL INDIVIDUAL READY RESERVES			48,429	47,118	47,855	50,035	52,000	53,584	55,000	58,400	58,400	60,000	60,000	

DEPARTMENT OF THE NAVY
RESERVE PERSONNEL, MARINE CORPS
RESERVE COMPONENT PERSONNEL ON TOURS OF ACTIVE DUTY, STRENGTH BY GRADE

OFFICERS	FY 1985		FY 1986		FY 1987		FY 1988	
	AVERAGE	END	AVERAGE	END	AVERAGE	END	AVERAGE	END
0-6 COLONEL	11	15	16	16	21	25	25	25
0-5 LIEUTENANT COLONEL	47	48	52	56	58	59	65	72
0-4 MAJOR	58	61	68	73	82	92	96	99
0-3 CAPTAIN	47	52	55	57	64	74	75	77
0-2 FIRST LIEUTENANT	2	5	5	5	6	7	7	8
0-1 SECOND LIEUTENANT	-	-	0	-	0	-	0	-
M-2 CHIEF WARRANT OFFICER	24	25	27	28	31	33	33	34
SUB-TOTAL	189	206	223	235	262	290	301	315

ENLISTED

E-9 SERGEANT MAJOR/MASTER GUNNERY SERGEANT	5	6	7	9	9	9	9	9
E-8 MASTER SERGEANT/FIRST SERGEANT	22	25	29	35	34	36	37	38
E-7 GUNNERY SERGEANT	95	101	105	120	143	176	186	197
E-6 STAFF SERGEANT	170	186	200	235	260	302	317	334
E-5 SERGEANT	332	402	432	507	543	617	623	635
E-4 CORPORAL	119	151	195	258	253	265	267	271
E-3 LANCE CORPORAL	26	50	52	60	60	65	67	69
E-2 PRIVATE FIRST CLASS	4	7	11	16	18	22	23	24
E-1 PRIVATE	0	0	0	0	0	0	0	0
SUB-TOTAL	773	928	1,031	1,240	1,320	1,492	1,529	1,577

TOTAL PERSONNEL ON ACTIVE DUTY

962	1,134	1,254	1,475	1,582	1,782	1,830	1,892
-----	-------	-------	-------	-------	-------	-------	-------

DEPARTMENT OF THE NAVY
RESERVE PERSONNEL, MARINE CORPS
FY 1987 STRENGTH PLAN

	PAY GROUP A				RESERVE ENLISTMENT PROGRAM				INDIVIDUAL MOBILIZATION AUGMENTATION				TOTAL IMA	SUB-TOTAL	FULL-TIME SUPPORT PERSONNEL	TOTAL SELECTED RESERVE	
	OFFICER	ENLISTED	TOTAL	P6-F	P6-P	P6-B	P6-C	P6-D	TOTAL	P6-A	P6-B	P6-C					P6-D
30 SEPTEMBER, 1986	2,760	33,462	36,222	4,100	181	659	329	53	0	1,041	41,544	1,475	43,019				
OCTOBER	2,783	33,560	36,343	4,119	171	662	335	53	0	1,050	41,683	1,490	43,173				
NOVEMBER	2,794	32,865	35,659	3,917	162	665	341	53	0	1,059	40,797	1,505	42,302				
DECEMBER	2,794	32,845	35,639	4,085	155	674	345	54	0	1,073	40,952	1,520	42,472				
JANUARY	2,797	32,683	35,480	4,128	150	676	345	54	0	1,075	40,833	1,530	42,363				
FEBRUARY	2,822	32,564	35,386	4,062	160	681	345	56	0	1,082	40,690	1,540	42,230				
MARCH	2,854	32,399	35,253	4,050	230	684	351	58	0	1,093	40,626	1,550	42,176				
APRIL	2,855	32,332	35,187	4,012	270	693	365	58	0	1,116	40,585	1,570	42,155				
MAY	2,865	32,310	35,175	4,210	255	696	377	58	0	1,131	40,771	1,600	42,371				
JUNE	2,873	32,729	35,602	4,230	240	699	383	58	0	1,140	41,212	1,640	42,852				
JULY	2,873	33,457	36,330	4,240	220	703	388	58	0	1,149	41,939	1,680	43,619				
AUGUST	2,883	33,957	36,840	4,257	191	707	391	58	0	1,156	42,444	1,732	44,176				
30 SEPTEMBER, 1987	2,870	34,269	37,139	4,138	181	710	392	58	0	1,160	42,618	1,782	44,400				
TOTAL AVERAGES	2,834	32,964	35,798	4,119	199	685	361	56	0	1,102	41,218	1,582	42,800				
						OFFICER AVERAGE	344	217	30	0	591	262					
						ENLISTED AVERAGE	341	144	26	0	511	1,320					

DEPARTMENT OF THE NAVY
RESERVE PERSONNEL, MARINE CORPS
FY 1986 STRENGTH PLAN

	RESERVE ENLISTMENT PROGRAM				INDIVIDUAL MOBILIZATION AUGMENTATION				TOTAL IMA	SUB-TOTAL	FULL-TIME SUPPORT PERSONNEL	TOTAL SELECTED RESERVE	
	PAY GROUP A		TOTAL		SUB-TOTAL		TOTAL						
	OFFICER	ENLISTED	PG-F	PG-P	PG-A	PG-B	PG-C	PG-D					
30 SEPTEMBER, 1985 *	2,611	32,537	3,980	160	39,288	913	228	22	1	1,164	40,452	1,134	41,586
OCTOBER *	2,567	31,808	4,067	172	38,614	606	251	21	0	878	39,492	1,150	40,642
NOVEMBER	2,667	32,749	3,845	176	39,437	675	278	36	0	989	40,426	1,151	41,577
DECEMBER	2,670	32,851	3,657	182	39,360	685	289	40	0	1,014	40,374	1,166	41,540
JANUARY	2,673	32,987	3,533	190	39,383	665	305	43	0	1,013	40,396	1,183	41,579
FEBRUARY	2,679	33,216	3,367	219	39,481	655	307	45	0	1,007	40,488	1,203	41,691
MARCH	2,714	33,278	3,260	236	39,488	645	309	48	0	1,002	40,490	1,229	41,719
APRIL	2,730	33,386	3,177	243	39,536	646	317	49	0	1,012	40,548	1,264	41,812
MAY	2,739	33,386	3,321	234	39,680	645	317	50	0	1,012	40,692	1,299	41,991
JUNE	2,742	33,426	3,590	223	39,981	648	318	54	0	1,020	41,001	1,315	42,316
JULY	2,741	33,437	3,890	212	40,280	656	324	56	0	1,036	41,316	1,347	42,663
AUGUST	2,776	33,465	4,050	201	40,492	649	326	59	0	1,034	41,526	1,437	42,963
30 SEPTEMBER, 1986	2,760	33,462	4,100	181	40,503	659	329	53	0	1,041	41,544	1,475	43,019
TOTAL AVERAGES	2,699	33,082	3,650	205	39,636	663	302	45	0	1,010	40,646	1,254	41,900
					OFFICER AVERAGE	332	164	21	0	517		223	
					ENLISTED AVERAGE	331	138	24	0	493		1,031	

* These months reflect actuals.

DEPARTMENT OF THE NAVY
RESERVE PERSONNEL, MARINE CORPS
FY 1985 STRENGTH PLAN

	RESERVE ENLISTMENT PROGRAM				INDIVIDUAL MOBILIZATION AUGMENTATION				TOTAL IMA	SUB-TOTAL	FULL-TIME SUPPORT PERSONNEL	TOTAL SELECTED RESERVE		
	PAY GROUP A		SUB-TOTAL		PG-A		PG-B							
	OFFICER	ENLISTED	TOTAL	PG-F	PG-P	PG-D	PG-C	PG-B						
30 SEPTEMBER, 1984	2,560	32,299	34,859	4,101	62	39,022	557	203	27	7	794	39,816	803	40,619
OCTOBER	2,530	32,318	34,848	4,089	112	39,049	558	206	27	9	800	39,849	789	40,638
NOVEMBER	2,496	31,941	34,437	3,922	143	38,502	566	212	27	8	813	39,315	826	40,141
DECEMBER	2,495	31,712	34,207	3,599	187	37,993	622	211	26	7	866	38,859	857	39,716
JANUARY	2,506	31,803	34,309	3,645	243	38,197	585	226	25	8	844	39,041	902	39,943
FEBRUARY	2,513	31,676	34,189	3,691	287	38,167	602	233	25	7	867	39,034	924	39,958
MARCH	2,523	31,495	34,018	3,322	349	37,689	672	236	25	1	934	38,623	936	39,559
APRIL	2,536	31,187	33,723	3,258	398	37,379	670	243	24	1	938	38,317	1,042	39,359
MAY	2,545	30,790	33,335	3,359	367	37,061	707	244	23	0	974	38,035	1,050	39,085
JUNE	2,559	30,355	32,914	4,778	343	38,035	768	238	23	0	1,029	39,064	1,041	40,105
JULY	2,577	30,480	33,057	5,430	276	38,763	603	270	22	14	909	39,672	1,086	40,758
AUGUST	2,586	31,101	33,687	5,405	193	39,285	606	275	22	14	917	40,202	1,122	41,324
30 SEPTEMBER, 1985	2,611	32,537	35,148	3,980	160	39,288	913	228	22	1	1,164	40,452	1,134	41,586
TOTAL AVERAGES	2,538	31,440	33,978	4,045	251	38,274	641	234	24	6	905	39,179	962	40,141
						OFFICER AVERAGE	321	183	12	6	522			189
						ENLISTED AVERAGE	320	51	12	0	383			773

DEPARTMENT OF THE NAVY
RESERVE PERSONNEL, MARINE CORPS
SCHEDULE OF GAINS AND LOSSES TO PAID SELECTED RESERVE STRENGTHS
OFFICERS

	FY 1985	FY 1986	FY 1987
BEGIN STRENGTH	3,175	3,309	3,558

GAINS			

NONPRIOR SERVICE:			
MALE (ROTC GRADUATES INCLUDED)	-	-	-
FEMALE (ROTC GRADUATES INCLUDED)	-	-	-
PRIOR SERVICE PERSONNEL:			
CIVILIAN LIFE	2	3	3
ACTIVE COMPONENT	-	-	10
ENLISTED COMMISSIONING PROGRAMS	-	-	-
OTHER RESERVE STATUS/COMPONENT (IRR)	659	695	730
TOTAL GAINS	661	698	743

LOSSES			

CIVILIAN LIFE	-	-	-
ACTIVE COMPONENT	18	11	18
RETIRED RESERVES	37	30	32
OTHER RESERVE STATUS/COMPONENT (IRR)	456	403	464
ALL OTHERS	16	5	5
TOTAL LOSSES	527	449	519

ACCOUNTING ADJUSTMENT			

END STRENGTH	3,309	3,558	3,782
	*****	*****	*****

DEPARTMENT OF THE NAVY
RESERVE PERSONNEL, MARINE CORPS
SCHEDULE OF GAINS AND LOSSES TO PAID SELECTED RESERVE STRENGTHS
ENLISTED

	FY 1985	FY 1986	FY 1987
BEGIN STRENGTH	37,444	38,277	39,461

GAINS			

NONPRIOR SERVICE:	(8,839)	(9,000)	(8,400)
MALE (ROTC GRADUATES INCLUDED)	8,597	8,784	8,184
FEMALE (ROTC GRADUATES INCLUDED)	242	216	216
PRIOR SERVICE PERSONNEL:	(6,145)	(5,848)	(5,848)
CIVILIAN LIFE	45	45	45
ACTIVE COMPONENT	1,464	1,573	1,573
OTHER RESERVE STATUS/COMPONENT (IRR & STANDBY)	4,461	4,130	4,130
ALL OTHERS	175	100	100
REENLISTMENTS & EXTENSIONS	3,351	2,400	2,400
TOTAL GAINS	18,335	17,248	16,648

LOSSES			

EXPIRATION OF SELECTED RESERVE SERVICE	6,804	6,400	6,235
ACTIVE COMPONENT	364	424	460
TO OFFICER STATUS	52	51	47
REENLISTMENTS & EXTENSIONS	5,850	5,637	5,436
RETIRED RESERVES	94	96	93
OTHER RESERVE STATUS/COMPONENT (IRR)	277	201	104
ATTRITION (ANNUAL TRAINING DUTY AND UNSCHEDULED LOSSES)	4,046	3,244	3,106
ALL OTHER	15	11	10
TOTAL LOSSES	17,502	16,064	15,491
END STRENGTH	38,277	39,461	40,618

SUMMARY OF ENTITLEMENTS BY ACTIVITY AND SUBACTIVITY
RESERVE PERSONNEL, MARINE CORPS

FY 1987
(DOLLARS IN THOUSANDS)

UNIT AND INDIVIDUAL TRAINING	FY 1985			FY 1986			FY 1987			PAGE NUMBER
	OFFICER	ENLISTED	TOTAL	OFFICER	ENLISTED	TOTAL	OFFICER	ENLISTED	TOTAL	
PAY GROUP A										
ACTIVE DUTY TRAINING	\$6,789	\$22,937	\$29,726	\$7,245	\$24,349	\$31,594	\$7,595	\$24,267	\$31,862	30
INACTIVE DUTY TRAINING										
UNIT TRAINING ASSEMBLIES	\$18,241	\$8,502	\$76,743	\$19,535	\$62,416	\$81,951	\$20,479	\$62,216	\$82,695	31/32
FIGHT TRAINING	\$3,095	\$70	\$3,165	\$3,344	\$75	\$3,419	\$3,408	\$75	\$3,483	31/32
TRAINING PREPARATION	\$502	\$538	\$1,040	\$559	\$580	\$1,139	\$586	\$626	\$1,212	31/32
CLOTHING	\$36	\$1,624	\$1,660	\$38	\$1,708	\$1,746	\$40	\$1,703	\$1,743	33
SUBSISTENCE OF ENLISTED PERSONNEL	-	\$5,283	\$5,283	-	\$5,665	\$5,665	-	\$5,858	\$5,858	33
TRAVEL	\$892	\$8,674	\$9,566	\$961	\$9,115	\$10,076	\$1,043	\$9,411	\$10,454	34
TOTAL DIRECT OBLIGATIONS	\$29,555	\$97,628	\$127,183	\$31,682	\$103,908	\$135,590	\$33,151	\$104,156	\$137,307	
PAY GROUP B										
ACTIVE DUTY TRAINING	\$566	\$60	\$626	\$517	\$169	\$686	\$681	\$175	\$856	37
INACTIVE DUTY TRAINING	\$782	\$79	\$861	\$705	\$222	\$927	\$929	\$230	\$1,159	38
CLOTHING	\$2	\$2	\$4	\$2	\$5	\$7	\$3	\$5	\$8	39
SUBSISTENCE OF ENLISTED PERSONNEL	-	\$6	\$6	-	\$16	\$16	-	\$17	\$17	39/40
TRAVEL	\$84	\$23	\$107	\$78	\$64	\$142	\$106	\$69	\$175	40
TOTAL DIRECT OBLIGATIONS	\$1,434	\$170	\$1,604	\$1,302	\$476	\$1,778	\$1,719	\$496	\$2,215	
PAY GROUP C										
ACTIVE DUTY TRAINING	\$39	\$15	\$54	\$69	\$29	\$98	\$96	\$31	\$127	43
INACTIVE DUTY TRAINING	\$26	\$10	\$36	\$47	\$20	\$67	\$66	\$21	\$87	44
CLOTHING	*	*	\$0	*	\$1	\$1	*	\$1	\$1	45
SUBSISTENCE OF ENLISTED PERSONNEL	-	*	\$0	-	\$2	\$2	-	\$2	\$2	45/46
TRAVEL	\$6	\$5	\$11	\$10	\$11	\$21	\$14	\$12	\$26	46
TOTAL DIRECT OBLIGATIONS	\$71	\$30	\$101	\$126	\$63	\$189	\$176	\$67	\$243	

* DENOTES LESS THAN A THOUSAND

SUMMARY OF ENTITLEMENTS BY ACTIVITY AND SUBACTIVITY
RESERVE PERSONNEL, MARINE CORPS
FY 1987
(DOLLARS IN THOUSANDS)

UNIT AND INDIVIDUAL TRAINING (CONT.)	FY 1985			FY 1986			FY 1987			PAGE NUMBER
	OFFICER	ENLISTED	TOTAL	OFFICER	ENLISTED	TOTAL	OFFICER	ENLISTED	TOTAL	
PAY GROUP F										
ACTIVE DUTY TRAINING	-	\$47,522	\$47,522	-	\$46,687	\$46,687	-	\$52,686	\$52,686	49
CLOTHING	-	\$5,287	\$5,287	-	\$4,960	\$4,960	-	\$6,174	\$6,174	49
SUBSISTENCE OF ENLISTED PERSONNEL	-	\$4,396	\$4,396	-	\$3,860	\$3,860	-	\$4,416	\$4,416	50
TRAVEL	-	\$4,621	\$4,621	-	\$5,524	\$5,524	-	\$5,509	\$5,509	50
TOTAL DIRECT OBLIGATIONS	\$0	\$61,826	\$61,826	\$0	\$61,031	\$61,031	\$0	\$68,785	\$68,785	
PAY GROUP P										
INACTIVE DUTY (UNIT) TRAINING	-	\$234	\$234	-	\$197	\$197	-	\$191	\$191	53
CLOTHING	-	\$16	\$16	-	\$13	\$13	-	\$13	\$13	53
SUBSISTENCE OF ENLISTED PERSONNEL	-	\$37	\$37	-	\$23	\$23	-	\$23	\$23	53
TOTAL DIRECT OBLIGATIONS	\$0	\$287	\$287	\$0	\$233	\$233	\$0	\$227	\$227	
PAY GROUP D										
ACTIVE DUTY TRAINING	\$15	\$0	\$15	\$0	\$0	\$0	\$0	\$0	\$0	55
SUBSISTENCE OF ENLISTED PERSONNEL	-	\$0	\$0	-	\$0	\$0	-	\$0	\$0	
TRAVEL	\$3	\$0	\$3	\$0	\$0	\$0	\$0	\$0	\$0	55
TOTAL DIRECT OBLIGATIONS	\$18	\$0	\$18	\$0	\$0	\$0	\$0	\$0	\$0	
TOTAL UNIT AND INDIVIDUAL TRAINING	\$31,078	\$159,941	\$191,019	\$33,110	\$165,711	\$198,821	\$35,046	\$173,731	\$208,777	

* DENOTES LESS THAN A THOUSAND

SUMMARY OF ENTITLEMENTS BY ACTIVITY AND SUBACTIVITY
RESERVE PERSONNEL, MARINE CORPS
FY 1987
(DOLLARS IN THOUSANDS)

	FY 1985			FY 1986			FY 1987			PAGE NUMBER
	OFFICER	ENLISTED	TOTAL	OFFICER	ENLISTED	TOTAL	OFFICER	ENLISTED	TOTAL	
OTHER TRAINING AND SUPPORT										
MOBILIZATION TRAINING (FY87 MOB TEST)										
ACTIVE DUTY TRAINING	\$1,696	\$430	\$2,126	\$1,549	\$403	\$1,952	\$2,116	\$3,832	\$5,948	58
SUBSISTENCE OF ENLISTED PERSONNEL	-	\$25	\$25	-	\$22	\$22	-	\$24	\$24	59
TRAVEL	\$282	\$190	\$472	\$261	\$180	\$441	\$649	\$3,050	\$3,699	59
TOTAL DIRECT OBLIGATIONS	\$1,978	\$645	\$2,623	\$1,810	\$605	\$2,415	\$2,765	\$6,906	\$9,671	
SCHOOL TRAINING										
REFRESHER/PROFICIENCY TRAINING	\$3,154	\$2,534	\$5,688	\$2,376	\$1,896	\$4,272	\$2,398	\$1,919	\$4,317	62
CAREER DEVELOPMENT TRAINING	\$1,543	\$89	\$1,632	\$1,577	\$57	\$1,634	\$1,527	\$79	\$1,606	63
INITIAL SKILL ACQUISITION	-	\$3,278	\$3,278	-	\$1,785	\$1,785	-	\$1,789	\$1,789	64
UNIT CONVERSION TRAINING	\$37	\$73	\$110	\$37	\$72	\$109	\$37	\$78	\$115	65
TRAINING OF IRR PERSONNEL	\$1,386	-	\$1,386	\$1,231	-	\$1,231	\$1,239	-	\$1,239	64
TOTAL DIRECT OBLIGATIONS	\$6,120	\$5,974	\$12,094	\$5,221	\$3,810	\$9,031	\$5,201	\$3,865	\$9,066	
SPECIAL TRAINING										
EXERCISES	\$1,515	\$579	\$2,094	\$1,776	\$611	\$2,387	\$2,156	\$616	\$2,772	68
CMND/STAFF SUPERVISION & CONFERENCES	\$1,526	\$44	\$1,570	\$1,530	\$38	\$1,568	\$1,542	\$39	\$1,581	69
OPERATIONAL TRAINING	\$568	\$1,032	\$1,600	\$537	\$938	\$1,475	\$545	\$960	\$1,505	70
MANAGEMENT SUPPORT	\$852	\$1,584	\$2,436	\$686	\$1,424	\$2,110	\$689	\$1,431	\$2,120	71
SERVICE MISSION/MISSION SUPPORT	\$2,860	\$3,158	\$6,018	\$1,786	\$2,454	\$4,240	\$2,183	\$2,811	\$4,994	72
COMPETITIVE EVENTS	\$265	\$456	\$721	\$245	\$407	\$652	\$250	\$418	\$668	73
RECRUITMENT/RETENTION	-	\$2,987	\$2,987	-	\$3,125	\$3,125	-	\$2,893	\$2,893	74
TOTAL DIRECT OBLIGATIONS	\$7,586	\$9,840	\$17,426	\$6,560	\$8,997	\$15,557	\$7,365	\$9,168	\$16,533	

SUMMARY OF ENTITLEMENTS BY ACTIVITY AND SUBACTIVITY
RESERVE PERSONNEL, MARINE CORPS
FY 1987
(DOLLARS IN THOUSANDS)

	FY 1985			FY 1986			FY 1987			PAGE NUMBER
	OFFICER	ENLISTED	TOTAL	OFFICER	ENLISTED	TOTAL	OFFICER	ENLISTED	TOTAL	
OTHER TRAINING AND SUPPORT (CONT.)										
ADMINISTRATION AND SUPPORT										
ACTIVE DUTY TRAINING	\$10,668	\$20,721	\$31,389	\$13,301	\$29,140	\$42,441	\$15,784	\$37,453	\$53,237	78
ENLISTED INDIVIDUAL CLOTHING TRAVEL	-	\$32	\$32	-	\$41	\$41	-	\$53	\$53	79
DEATH/DISABILITY/HOSPITAL BENEFITS	\$91	\$285	\$376	\$142	\$347	\$489	\$178	\$413	\$591	79
ENLISTMENT BONUS	\$112	\$788	\$900	\$96	\$882	\$978	\$96	\$882	\$978	80
REENLISTMENT BONUS	-	\$225	\$225	-	\$282	\$282	-	\$320	\$320	81
EDUCATIONAL ASSISTANCE	-	\$985	\$985	-	\$771	\$771	-	\$717	\$717	83
SNCR AFFILIATION BONUS	-	\$1,829	\$1,829	-	\$2,411	\$2,411	-	\$1,293	\$1,293	85
INDIVIDUAL READY RESERVIST BONUS	-	\$159	\$159	-	\$200	\$200	-	\$200	\$200	87
	-	\$125	\$125	-	\$550	\$550	-	\$550	\$550	89
TOTAL DIRECT OBLIGATIONS	\$10,871	\$25,149	\$36,020	\$13,539	\$34,624	\$48,163	\$16,058	\$41,881	\$57,939	
EDUCATIONAL BENEFITS (NEW G.I. BILL)	-	\$3,259	\$3,259	-	\$5,770	\$5,770	-	\$5,000	\$5,000	92
PLATOON LEADERS CLASS										
UNIFORMS: ISSUE-IN-KIND	-	\$514	\$514	-	\$491	\$491	-	\$491	\$491	95
SUMMER CAMP TRAINING	-	\$3,724	\$3,724	-	\$3,631	\$3,631	-	\$3,632	\$3,632	95
SUBSISTENCE ALLOWANCE (SUBSIDY)	-	\$913	\$913	-	\$945	\$945	-	\$1,080	\$1,080	95
SUBSISTENCE OF ENLISTED PERSONNEL TRAVEL	-	\$245	\$245	-	\$234	\$234	-	\$237	\$237	96
	-	\$726	\$726	-	\$729	\$729	-	\$756	\$756	96
TOTAL DIRECT OBLIGATIONS	\$0	\$6,122	\$6,122	\$0	\$6,030	\$6,030	\$0	\$6,196	\$6,196	
JROTC (UNIFORMS, ISSUE-IN-KIND)	-	\$1,367	\$1,367	-	\$1,512	\$1,512	-	\$1,618	\$1,618	100
TOTAL OTHER TRAINING AND SUPPORT	\$26,555	\$52,356	\$78,911	\$27,130	\$61,348	\$88,478	\$31,389	\$74,634	\$106,023	
TOTAL RESERVE PERSONNEL, MARINE CORPS	\$57,633	\$212,297	\$269,930	\$60,240	\$227,059	\$287,299	\$66,435	\$248,365	\$314,800	

ANALYSIS OF APPROPRIATION CHANGES
RESERVE PERSONNEL, MARINE CORPS
FY 1987
(DOLLARS IN THOUSANDS)

UNIT AND INDIVIDUAL TRAINING	FY 86 COL, FY 1986 PRESIDENT'S BUDGET	CONGRESS ACTION	APPRO- PRIATION	INTERNAL REALIGN/ REPROGRAM	SUBTOTAL	PAY RAISE	OTHER PRICE/ PROGRAM CHANGES	FY 86 COL, FY 1987 PRESIDENT'S BUDGET
PAY GROUP A								
ACTIVE DUTY TRAINING	\$31,470	(\$2,158)	\$29,312	\$69	\$29,381	\$928	\$1,285	\$31,594
INACTIVE DUTY TRAINING								
UNIT TRAINING ASSEMBLIES	\$81,157	(\$6,782)	\$74,375	\$647	\$75,022	\$2,416	\$4,513	\$81,951
FLIGHT TRAINING	\$3,385	(\$292)	\$3,093	\$28	\$3,121	\$100	\$198	\$3,419
TRAINING PREPARATION	\$873	(\$78)	\$795	\$264	\$1,059	\$33	\$47	\$1,139
CLOTHING	\$1,734		\$1,734	\$12	\$1,746			\$1,746
SUBSISTENCE OF ENLISTED PERSONNEL	\$5,704		\$5,704	(\$39)	\$5,665			\$5,665
TRAVEL	\$9,635		\$9,635	\$441	\$10,076			\$10,076
TOTAL DIRECT OBLIGATIONS	\$133,958	(\$9,310)	\$124,648	\$1,422	\$126,070	\$3,477	\$6,043	\$135,590
PAY GROUP B								
ACTIVE DUTY TRAINING	\$674	(\$53)	\$621	\$11	\$632	\$20	\$34	\$686
INACTIVE DUTY TRAINING	\$911	(\$73)	\$838	\$14	\$852	\$27	\$48	\$927
CLOTHING	\$7		\$7	\$0	\$7			\$7
SUBSISTENCE OF ENLISTED PERSONNEL	\$16		\$16	\$0	\$16			\$16
TRAVEL	\$124		\$124	\$18	\$142			\$142
TOTAL DIRECT OBLIGATIONS	\$1,732	(\$126)	\$1,606	\$43	\$1,649	\$47	\$82	\$1,778
PAY GROUP C								
ACTIVE DUTY TRAINING	\$59	(\$6)	\$53	\$38	\$91	\$3	\$4	\$98
INACTIVE DUTY TRAINING	\$39	(\$5)	\$34	\$28	\$62	\$2	\$3	\$67
CLOTHING	\$1		\$1	\$0	\$1			\$1
SUBSISTENCE OF ENLISTED PERSONNEL	\$2		\$2	\$0	\$2			\$2
TRAVEL	\$18		\$18	\$3	\$21			\$21
TOTAL DIRECT OBLIGATIONS	\$119	(\$11)	\$108	\$69	\$177	\$5	\$7	\$189

ANALYSIS OF APPROPRIATION CHANGES
RESERVE PERSONNEL, MARINE CORPS
FY 1987
(DOLLARS IN THOUSANDS)

UNIT AND INDIVIDUAL TRAINING (CONT.)	FY 86 COL, FY 1986 PRESIDENT'S BUDGET	CONGRESS ACTION	APPRO- PRIATION	INTERNAL REALIGN/ REPROGRAM	SUBTOTAL	PAY RAISE	OTHER PRICE/ PROGRAM CHANGES	FY 86 COL, FY 1987 PRESIDENT'S BUDGET
PAY GROUP F								
ACTIVE DUTY TRAINING	\$50,513	(\$3,631)	\$46,882	(\$3,907)	\$42,975	\$1,355	\$2,357	\$46,687
CLOTHING	\$4,722		\$4,722	\$238	\$4,960			\$4,960
SUBSISTENCE OF ENLISTED PERSONNEL	\$4,476		\$4,476	(\$616)	\$3,860			\$3,860
TRAVEL	\$5,335		\$5,335	\$189	\$5,524			\$5,524
TOTAL DIRECT OBLIGATIONS	\$65,046	(\$3,631)	\$61,415	(\$4,096)	\$57,319	\$1,355	\$2,357	\$61,031
PAY GROUP P								
INACTIVE DUTY (UNIT) TRAINING	\$208	(\$17)	\$191	(\$11)	\$180	\$6	\$11	\$197
CLOTHING	\$12		\$12	\$1	\$13			\$13
SUBSISTENCE OF ENLISTED PERSONNEL	\$23		\$23	\$0	\$23			\$23
TOTAL DIRECT OBLIGATIONS	\$243	(\$17)	\$226	(\$10)	\$216	\$6	\$11	\$233
PAY GROUP D								
ACTIVE DUTY TRAINING	\$21	(\$6)	\$15	(\$15)	\$0	\$0	\$0	\$0
SUBSISTENCE OF ENLISTED PERSONNEL	\$0		\$0	\$0	\$0			\$0
TRAVEL	\$7		\$7	(\$7)	\$0			\$0
TOTAL DIRECT OBLIGATIONS	\$28	(\$6)	\$22	(\$22)	\$0	\$0	\$0	\$0
TOTAL UNIT AND INDIVIDUAL TRAINING	\$201,126	(\$13,101)	\$188,025	(\$2,593)	\$185,432	\$4,989	\$8,500	\$198,021

ANALYSIS OF APPROPRIATION CHANGES
RESERVE PERSONNEL, MARINE CORPS
FY 1987
(DOLLARS IN THOUSANDS)

	FY 86 COL, FY 1986 PRESIDENT'S BUDGET	CONGRESS ACTION	APPRO- PRIATION	INTERNAL REALIGN/ REPROGRAM	SUBTOTAL	PAY RAISE	OTHER PRICE/ PROGRAM CHANGES	FY 86 COL, FY 1987 PRESIDENT'S BUDGET
OTHER TRAINING AND SUPPORT								
MOBILIZATION TRAINING								
ACTIVE DUTY TRAINING	\$1,954	(\$142)	\$1,812	(\$5)	\$1,807	\$57	\$88	\$1,952
SUBSISTENCE OF ENLISTED PERSONNEL	\$23		\$23	(\$1)	\$22			\$22
TRAVEL	\$425		\$425	\$16	\$441			\$441
TOTAL DIRECT OBLIGATIONS	\$2,402	(\$142)	\$2,260	\$10	\$2,270	\$57	\$88	\$2,415
SCHOOL TRAINING								
REFRESHER/PROFICIENCY TRAINING	\$4,268	(\$249)	\$4,019	(\$1)	\$4,018	\$82	\$172	\$4,272
CAREER DEVELOPMENT TRAINING	\$1,244	(\$86)	\$1,158	\$388	\$1,546	\$38	\$50	\$1,634
INITIAL SKILL ACQUISITION	\$1,180	(\$90)	\$1,090	\$602	\$1,692	\$45	\$48	\$1,785
UNIT CONVERSION TRAINING	\$921	(\$41)	\$880	(\$812)	\$68	\$3	\$38	\$109
TRAINING OF IRR PERSONNEL	\$109	(\$33)	\$76	\$1,120	\$1,196	\$31	\$4	\$1,231
TOTAL DIRECT OBLIGATIONS	\$7,722	(\$499)	\$7,223	\$1,297	\$8,520	\$199	\$312	\$9,031
SPECIAL TRAINING								
EXERCISES	\$2,084	(\$142)	\$1,942	\$328	\$2,270	\$58	\$59	\$2,387
CRND/STAFF SUPERVISION & CONFERENCES	\$1,589	(\$89)	\$1,500	(\$23)	\$1,477	\$34	\$57	\$1,568
OPERATIONAL TRAINING	\$1,602	(\$75)	\$1,527	(\$128)	\$1,399	\$18	\$58	\$1,475
MANAGEMENT SUPPORT	\$2,092	(\$124)	\$1,968	\$15	\$1,983	\$51	\$76	\$2,110
SERVICE MISSION/MISSION SUPPORT	\$4,585	(\$260)	\$4,325	(\$336)	\$3,989	\$97	\$154	\$4,240
COMPETITIVE EVENTS	\$713	(\$32)	\$681	(\$61)	\$620	\$7	\$25	\$652
RECRUITMENT/RETENTION	\$2,634	(\$173)	\$2,461	\$443	\$2,904	\$86	\$135	\$3,125
TOTAL DIRECT OBLIGATIONS	\$15,299	(\$895)	\$14,404	\$238	\$14,642	\$351	\$564	\$15,557

ANALYSIS OF APPROPRIATION CHANGES
RESERVE PERSONNEL, MARINE CORPS
FY 1987
(DOLLARS IN THOUSANDS)

OTHER TRAINING AND SUPPORT (CONT.)	FY 86 COL, FY 1986 PRESIDENT'S BUDGET	CONGRESS ACTION	APPRO- PRIATION	INTERNAL REALIGN/ REPROGRAM	SUBTOTAL	PAY RAISE	OTHER PRICE/ PROGRAM CHANGES	FY 86 COL, FY 1987 PRESIDENT'S BUDGET
ADMINISTRATION AND SUPPORT								
ACTIVE DUTY TRAINING	\$43,503	(\$2,889)	\$40,614	(\$1,133)	\$39,481	\$1,198	\$1,762	\$42,441
ENLISTED INDIVIDUAL CLOTHING	\$32		\$32	\$9	\$41			\$41
TRAVEL	\$538		\$538	(\$49)	\$489			\$489
DEATH/DISABILITY/HOSPITAL BENEFITS	\$301		\$301	\$677	\$978			\$978
ENLISTMENT BONUS	\$339		\$339	(\$57)	\$282			\$282
REENLISTMENT BONUS	\$771		\$771	\$0	\$771			\$771
EDUCATIONAL ASSISTENCE	\$2,761		\$2,761	(\$350)	\$2,411			\$2,411
SMCR AFFILIATION BONUS	\$200		\$200	\$0	\$200			\$200
INDIVIDUAL READY RESERVIST BONUS	\$50		\$50	\$0	\$50			\$50
TOTAL DIRECT OBLIGATIONS	\$48,945	(\$2,839)	\$46,106	(9903)	\$45,203	\$1,198	\$1,762	\$48,163
EDUCATIONAL BENEFITS (NEW G.I. BILL)	\$4,030		\$4,030	\$1,740	\$5,770			\$5,770
PLATOON LEADERS CLASS								
UNIFORMS: ISSUE-IN-KIND	\$842		\$842	(\$351)	\$491			\$491
SUMMER CAMP TRAINING	\$5,403	(\$274)	\$5,129	(\$1,778)	\$3,351	\$106	\$174	\$3,631
SUBSISTENCE ALLOWANCE (SUBSIDY)	\$1,350		\$1,350	(\$405)	\$945			\$945
SUBSISTENCE OF ENLISTED PERSONNEL	\$420		\$420	(\$186)	\$234			\$234
TRAVEL	\$987		\$987	(\$258)	\$729			\$729
TOTAL DIRECT OBLIGATIONS	\$9,002	(\$274)	\$8,728	(92,978)	\$5,750	\$106	\$174	\$6,030
JROTC (UNIFORMS, ISSUE-IN-KIND)	\$1,474		\$1,474	\$38	\$1,512			\$1,512
TOTAL OTHER TRAINING AND SUPPORT	\$68,874	(\$4,649)	\$64,225	(9558)	\$63,667	\$1,911	\$2,900	\$68,478

ANALYSIS OF APPROPRIATION CHANGES
 RESERVE PERSONNEL, MARINE CORPS
 FY 1987
 (DOLLARS IN THOUSANDS)

	FY 86 COL, FY 1986	CONGRESS ACTION	APPRO- PRIATION	INTERNAL REALIGN/ REPROGRAM	SUBTOTAL	PAY RAISE	OTHER PRICE/ PROGRAM CHANGES	FY 86 COL, FY 1986	FY 1987 PRESIDENT'S BUDGET
TOTAL RESERVE PERSONNEL, MARINE CORPS	\$290,000	(\$17,750)	\$272,250	(\$3,151)	\$269,099	\$6,800	\$11,400	\$287,299	
AMOUNT APPLIED TO FINANCE INCREASE COSTS						(\$3,151)			
AMOUNT TRANSFERRED FROM OTHER APPROPRIATIONS						\$3,649	\$11,400	\$15,049	

SUMMARY OF BASIC PAY AND RETIRED PAY ACCRUAL COSTS
RESERVE PERSONNEL, MARINE CORPS

FY1987

(THOUSANDS OF DOLLARS)

	FISCAL YEAR 1985		FISCAL YEAR 1986		FISCAL YEAR 1987	
	BASIC PAY	RETIRED PAY	BASIC PAY	RETIRED PAY	BASIC PAY	RETIRED PAY
PAY GROUP A						
OFFICERS	\$16,777	\$8,506	\$19,099	\$9,683	\$19,985	\$10,132
ENLISTED	\$45,424	\$23,030	\$55,218	\$27,996	\$55,061	\$27,916
SUB-TOTAL	\$62,201	\$31,536	\$74,317	\$37,679	\$75,046	\$38,048
PAY GROUP B						
OFFICERS	\$732	\$371	\$761	\$386	\$1,002	\$508
ENLISTED	\$87	\$44	\$239	\$121	\$248	\$126
SUB-TOTAL	\$819	\$415	\$1,000	\$507	\$1,250	\$634
PAY GROUP C						
OFFICERS	\$39	\$20	\$70	\$35	\$74	\$38
ENLISTED	\$12	\$6	\$12	\$6	\$22	\$11
SUB-TOTAL	\$51	\$26	\$82	\$41	\$96	\$49
PAY GROUP D						
OFFICERS	\$8	\$4	\$0	\$0	\$0	\$0
ENLISTED	\$0	\$0	\$0	\$0	\$0	\$0
SUB-TOTAL	\$8	\$4	\$0	\$0	\$0	\$0
PAY GROUP F						
ENLISTED	\$28,055	\$14,224	\$28,802	\$14,603	\$32,504	\$16,480
PAY GROUP P						
ENLISTED	\$154	\$78	\$131	\$66	\$127	\$64
MOBILIZATION TRAINING						
OFFICERS	\$982	\$498	\$865	\$439	\$1,223	\$620
ENLISTED	\$225	\$114	\$211	\$107	\$2,493	\$1,264
SUB-TOTAL	\$1,207	\$612	\$1,076	\$546	\$3,716	\$1,884

SUMMARY OF BASIC PAY AND RETIRED PAY ACCRUAL COSTS
RESERVE PERSONNEL, MARINE CORPS
FY1987

(THOUSANDS OF DOLLARS)

	FISCAL YEAR 1985		FISCAL YEAR 1986		FISCAL YEAR 1987	
	BASIC PAY	RETIRED PAY	BASIC PAY	RETIRED PAY	BASIC PAY	RETIRED PAY
SCHOOL TRAINING						
OFFICERS	\$2,552	\$1,294	\$2,249	\$1,123	\$2,223	\$1,117
ENLISTED	\$2,497	\$1,266	\$1,489	\$794	\$1,500	\$804
SUB-TOTAL	\$5,049	\$2,560	\$3,738	\$1,917	\$3,723	\$1,921
SPECIAL TRAINING						
OFFICERS	\$3,369	\$1,708	\$3,339	\$1,482	\$3,348	\$1,680
ENLISTED	\$4,034	\$2,045	\$3,357	\$1,891	\$3,784	\$1,902
SUB-TOTAL	\$7,402	\$3,753	\$6,696	\$3,373	\$7,132	\$3,582
ADMINISTRATION & SUPPORT						
OFFICERS	\$5,982	\$3,033	\$7,215	\$3,658	\$8,570	\$4,345
ENLISTED	\$9,886	\$5,012	\$14,090	\$7,144	\$18,116	\$9,185
SUB-TOTAL	\$15,868	\$8,045	\$21,305	\$10,802	\$26,686	\$13,530
PLATOON LEADERS CLASS						
ENLISTED	\$2,183	\$1,107	\$2,129	\$1,079	\$2,129	\$1,079
TOTAL DIRECT COSTS						
OFFICERS	\$30,442	\$15,434	\$33,598	\$16,806	\$36,425	\$18,440
ENLISTED	\$92,556	\$46,926	\$105,678	\$53,807	\$115,984	\$58,831
SUB-TOTAL	\$122,998	\$62,360	\$139,276	\$70,613	\$152,409	\$77,271
REIMBURSABLE PROGRAM						
OFFICERS	\$12	\$6	\$12	\$6	\$12	\$6
TOTAL PROGRAM						
OFFICERS	\$30,454	\$15,440	\$33,610	\$16,812	\$36,437	\$18,446
ENLISTED	\$92,556	\$46,926	\$105,678	\$53,807	\$115,984	\$58,831
TOTAL	\$123,010	\$62,366	\$139,288	\$70,619	\$152,421	\$77,277

SUMMARY OF BASIC ALLOWANCE FOR QUARTERS (BAQ) AND VARIABLE HOUSING ALLOWANCE (VHA) COSTS
RESERVE PERSONNEL, MARINE CORPS
FY1987
(THOUSANDS OF DOLLARS)

	FISCAL YEAR 1985		FISCAL YEAR 1986		FISCAL YEAR 1987	
	BAQ	VHA	BAQ	VHA	BAQ	VHA
PAY GROUP A						
OFFICERS	\$617		\$693		\$727	
ENLISTED	\$2,829		\$3,097		\$3,075	
SUB-TOTAL	\$3,446	\$0	\$3,790	\$0	\$3,802	\$0
PAY GROUP B						
OFFICERS	\$45		\$46		\$60	
ENLISTED	\$10		\$23		\$23	
SUB-TOTAL	\$55	\$0	\$69	\$0	\$83	\$0
PAY GROUP C						
OFFICERS	\$5		\$6		\$6	
ENLISTED	\$2		\$2		\$3	
SUB-TOTAL	\$7	\$0	\$8	\$0	\$9	\$0
PAY GROUP D						
OFFICERS	\$3		\$0		\$0	
ENLISTED	\$0		\$0		\$0	
SUB-TOTAL	\$3	\$0	\$0	\$0	\$0	\$0
PAY GROUP F						
ENLISTED	\$995	\$176	\$947	\$168	\$1,070	\$190
MOBILIZATION TRAINING						
OFFICERS	\$157		\$150		\$166	
ENLISTED	\$53		\$52		\$55	
SUB-TOTAL	\$210	\$0	\$202	\$0	\$221	\$0
SCHOOL TRAINING						
OFFICERS	\$573		\$533		\$522	
ENLISTED	\$539		\$361		\$359	
SUB-TOTAL	\$1,112	\$0	\$894	\$0	\$881	\$0

SUMMARY OF BASIC ALLOWANCE FOR QUARTERS (BAQ) AND VARIABLE HOUSING ALLOWANCE (VHA) COSTS
RESERVE PERSONNEL, MARINE CORPS
FY1987
(THOUSANDS OF DOLLARS)

	FISCAL YEAR 1985		FISCAL YEAR 1986		FISCAL YEAR 1987	
	BAQ	VHA	BAQ	VHA	BAQ	VHA
SPECIAL TRAINING						
OFFICERS	\$792		\$713		\$800	
ENLISTED	\$531		\$487		\$514	
SUB-TOTAL	\$1,323	\$0	\$1,200	\$0	\$1,314	\$0
ADMINISTRATION & SUPPORT						
OFFICERS	\$1,044	\$269	\$1,287	\$329	\$1,521	\$388
ENLISTED	\$2,648	\$682	\$3,801	\$971	\$4,883	\$1,247
SUB-TOTAL	\$3,692	\$951	\$5,088	\$1,300	\$6,404	\$1,635
PLATOON LEADERS CLASS						
ENLISTED	\$240		\$271		\$271	
TOTAL DIRECT COSTS						
OFFICERS	\$3,236	\$269	\$3,428	\$329	\$3,802	\$388
ENLISTED	\$7,847	\$858	\$9,041	\$1,139	\$10,253	\$1,437
TOTAL	\$11,083	\$1,127	\$12,469	\$1,468	\$14,055	\$1,825

SUMMARY OF TRAVEL COSTS
RESERVE PERSONNEL, MARINE CORPS
FY 1987
(THOUSANDS OF DOLLARS)

	FISCAL YEAR 1985	FISCAL YEAR 1986	FISCAL YEAR 1987
	TRAVEL	TRAVEL	TRAVEL
PAY GROUP A			
OFFICERS	\$892	\$961	\$1,043
ENLISTED	\$8,674	\$9,115	\$9,411
SUB-TOTAL	\$9,566	\$10,076	\$10,454
PAY GROUP B			
OFFICERS	\$84	\$78	\$106
ENLISTED	\$23	\$64	\$69
SUB-TOTAL	\$107	\$142	\$175
PAY GROUP C			
OFFICERS	\$6	\$10	\$14
ENLISTED	\$5	\$11	\$12
SUB-TOTAL	\$11	\$21	\$26
PAY GROUP D			
OFFICERS	\$3	\$0	\$0
ENLISTED	\$0	\$0	\$0
SUB-TOTAL	\$3	\$0	\$0
PAY GROUP F			
ENLISTED	\$4,621	\$5,524	\$5,509
MOBILIZATION TRAINING			
OFFICERS	\$282	\$261	\$649
ENLISTED	\$190	\$180	\$3,050
SUB-TOTAL	\$472	\$441	\$3,699
SCHOOL TRAINING			
OFFICERS	\$1,370	\$1,228	\$1,236
ENLISTED	\$1,322	\$1,031	\$1,052
SUB-TOTAL	\$2,692	\$2,259	\$2,288

SUMMARY OF TRAVEL COSTS
RESERVE PERSONNEL, MARINE CORPS
FY1987
(THOUSANDS OF DOLLARS)

	FISCAL YEAR 1985	FISCAL YEAR 1986	FISCAL YEAR 1987
	TRAVEL	TRAVEL	TRAVEL
SPECIAL TRAINING			
OFFICERS	\$1,148	\$1,164	\$1,237
ENLISTED	\$2,385	\$2,352	\$2,490
SUB-TOTAL	\$3,533	\$3,516	\$3,727
ADMINISTRATION & SUPPORT			
OFFICERS	\$91	\$142	\$178
ENLISTED	\$285	\$347	\$413
SUB-TOTAL	\$376	\$489	\$591
PLATOON LEADERS CLASS			
ENLISTED	\$726	\$729	\$756
TOTAL DIRECT COSTS			
OFFICERS	\$3,876	\$3,844	\$4,463
ENLISTED	\$18,231	\$19,353	\$22,762
TOTAL	\$22,107	\$23,197	\$27,225

SCHEDULE OF INCREASES AND DECREASES
(IN THOUSANDS OF DOLLARS)

AMOUNT

\$287,299

FY 1986 DIRECT PROGRAM

INCREASES:

\$19,357

PAY AND ALLOWANCES

The increase is the net result of an average strength increase of 248 officers and 652 enlisted, coupled with an increase of 112 mobilization training participants and 2748 school and special banddays.

CLOTHING

\$1,330

The increase is the net result of an average strength increase of 248 officers and 652 enlisted, coupled with an approved increase in the basic clothing bag rate for new trainees.

MOBILIZATION TEST

\$7,000

During FY 1987, \$7 million has been included to cover an involuntary one day, active duty screening of the entire (Service) Individual Ready Reserve (IRR).

ENLISTED SUBSISTENCE

\$755

The increase is the net result of an average strength increase of 652 enlisted, coupled with the approved increase in the subsistence rates.

TRAVEL

\$828

The increase is the net result of an average strength increase of 248 officers and 652 enlisted, 112 mobilization training participants and 2748 school and special banddays, coupled with inflation applied to the transportation portion of the travel rate.

SUBSISTENCE ALLOWANCE

\$135

The increase is the result of an increase of 150 students enrolling in the Reserve Officer Candidate course.

TOTAL INCREASES:

\$29,405

DECREASES:

(\$1,904)

INCENTIVE PROGRAMS

The decrease is the net result of a decrease in the number of anniversary payments, coupled with a reduction in the number eligible for the new GI Bill.

TOTAL DECREASES:

(\$1,904)

FY 1987 DIRECT PROGRAM

\$314,800

Section 4 - Detail of Military Personnel Entitlements

Appropriation: Reserve Personnel, Marine Corps
Budget Program 1: Unit and Individual Training
Budget Activity 1A: Training, Pay Group A

Actual	Estimate	Estimate
Fiscal Year 1985	Fiscal Year 1986	Fiscal Year 1987
\$127,183	\$155,590	\$137,307

Part I - Purpose and Scope

Pay Group A identifies Selected Marine Corps Reserve personnel authorized to attend 48 Training Assemblies (drills) and 15 days Annual Training. Additional Paid Drills and Additional Flight Training Periods are authorized for selected personnel for improvement of individual skills and increased mobilization readiness.

Training assemblies provide for classroom training, practical application, and specialist training. Training assemblies are conducted as multiple drills of a minimum of eight hours duration (counting as two drills) or a maximum of sixteen hours in one weekend (counting as four drills). Scheduling of multiple drills provides a greater opportunity for field training. Funds requested are based on 9% and 9% attendance at training assemblies for officers and enlisted personnel respectively. Personnel in the Selected Marine Corps Reserve are authorized 14 days annual training, exclusive of travel time. Reservists normally accomplish this training with the units to which they are assigned for mobilization. Funds requested are based on an average tour length of 15 days for 9% of the average officer strength and 94% of the average enlisted strength.

Additional Paid Drills are used for the following purposes:

- (1) Training exercise planning;
- (2) Preparation of lesson plans and training aids for training rehearsals.
- (3) Unit training administration;

Funds requested include 16,700 and 17,900 additional paid drills during FY 1986 and FY 1987, for ground personnel to be used for the above listed purposes.

Additional Flight Training Periods (AFTP's) are used by reservists to maintain and improve flight proficiency. A total of 24,596 and 25,007 AFTP's are programmed during FY 1986 and FY 1987 for use by officer and enlisted reservists.

Pay Group A identifies Selected Marine Corps Reserve personnel authorized to attend 48 training assemblies (drills) and 15 days annual training as Individual Mobilization Augmentees (IMA). These personnel are preassigned to fill mobilization billets on or shortly after M-day. Billets to be filled are broadly categorized to Fleet Marine Force augmentation, non-Fleet Marine Force augmentation, SMCK unit augmentation, and mobilization support.

SCHEDULE OF INCREASES AND DECREASES
(In Thousands of Dollars)
Pay Group A

AMOUNT
\$135,590

FY 1986 DIRECT PROGRAM

Increases:

Officers Pay and Allowances ----- \$1,385

- The increase is the result of an increase in average strength of 147 officers, coupled with an increase of 611 additional training assemblies. The average strength increase is required to stand up four TOW platoons, three LAV companies, and an Adversary Aircraft (KFIR) squadron, and fill existing unit personnel shortages.

Enlisted Subsistence ----- 193

- The increase is the result of a decreased enlisted personnel strength of 108, offset by an increase in the approved subsistence rates.

Travel ----- 378

- The increase is the result of a decreased enlisted personnel strength of 108, offset by an increased officer personnel strength of 147 coupled with inflation applied to the transportation portion of the travel rate.

Total Increases:

1,956

Decreases:

Enlisted Pay and Allowances ----- -236

- The decrease is the result of a decrease in average strength of 108 enlisted, offset by an increase of 1,000 additional training assemblies.

Clothing ----- -3

- The decrease is the result of a decreased enlisted personnel strength of 108, offset by an increase in officer personnel strength of 147.

Total Decreases:

-239

FY 1987 DIRECT PROGRAM:

\$137,307

Pay and Allowances Active Duty for Training, Officers: These funds are requested to provide for pay and allowances for officers attending active duty for training. The rates used in computing requirements include basic pay, retired pay accrual, government's social security contribution, subsistence and quarters allowances, and special and incentive pay as authorized:

(Amounts in Thousands)

	FY 1985		FY 1986		FY 1987	
	Strength	Rate	Strength	Rate	Strength	Rate
Average Strength Units	2,538		2,699		2,834	
Average Strength IMA	321		332		344	
Less Unpaid Status	-		-		-	
Participation Rate	99%		99%		99%	
Paid Participants	2,842	\$2,388.75	3,001	\$2,414.14	3,146	\$2,414.16
		\$ 6,789		\$7,245		\$ 7,595

Change from FY 1986 to FY 1987: The increase of \$350 from \$7,245 in FY 1986 to \$7,595 in FY 1987 is basically the result of an average strength increase of 147.

Pay and Allowances Active Duty for Training, Enlisted Personnel: These funds are requested to provide for pay and allowances of enlisted personnel attending active duty for training. The rates used in computing requirements include basic pay, retired pay accrual, government's social security contribution, quarters allowances, and special and incentive pay as authorized:

(Amounts in Thousands)

	FY 1985		FY 1986		FY 1987	
	Strength	Rate	Strength	Rate	Strength	Rate
Average Strength Units	31,440		33,082		32,964	
Average Strength IMA	320		331		341	
Less Unpaid Status	-2,287		-2,617		-2,613	
Participation Rate	94%		94%		94%	
Paid Participants	27,823	\$ 824.38	28,948	\$ 841.13	28,850	\$ 841.16
		\$22,937		\$24,349		\$24,267

Change from FY 1986 to FY 1987: The decrease of \$82 from \$24,349 in FY 1986 to \$24,267 in FY 1987 is the result of an average strength decrease of 108.

pay. Inactive Duty Training. Officers: These funds are requested to provide for pay and allowances of officers attending inactive duty for training including unit training and additional training assemblies. The rate used in computing the requirement includes basic pay, retired pay accrual, and special and incentive pay when authorized:

(Amounts in Thousands)

	FY 1985		FY 1986		FY 1987	
	Strength/ Assemblies	Rate	Amount	Strength/ Assemblies	Rate	Amount
Inactive Duty Training:						
Average Strength Units	2,538			2,699		
Less unpaid status	321			332		
Participation Rate	-			-		
Paid Participants	<u>2,842</u>	\$6,418.46	\$18,241	<u>3,001</u>	\$6,509.54	\$19,535
				<u>998</u>		<u>3,146</u>
						\$6,509.59
						\$20,479
Additional Training Assemblies						
Flight Training	22,193	\$ 139.47	\$ 3,095	23,096	\$ 144.79	\$ 3,344
Training Preparation	3,928	127.69	502	4,200	133.10	559
						<u>4,400</u>
						\$ 144.98
						\$ 3,408
						<u>586</u>
						\$ 3,903
Subtotal			\$ 3,597			\$ 3,994
TOTAL			\$21,838			\$24,473

Change from FY 1986 to FY 1987:

The increase of \$1,035 from \$23,438 in FY 1986 to \$24,473 in FY 1987 is basically the result of an average strength increase of 147, along with an increase of 611 additional training assemblies.

pay, Inactive Duty Training, Enlisted: These funds are requested to provide for pay and allowances of enlisted personnel attending inactive duty for training including additional training assemblies. The rate used in computing the requirement includes basic pay, retired pay accrual, and special and incentive pay when authorized:

(Amounts in thousands)

	FY 1985		FY 1986		FY 1987	
	Strength/ Assemblies	Rate Amount	Strength/ Assemblies	Rate Amount	Strength/ Assemblies	Rate Amount
Inactive Duty Training:						
Average Strength Units	31,440		33,082		32,964	
Average Strength IMA	320		331		341	
Less unpaid status	-2,287		-2,617		-2,613	
Participation Rate	91%		91%		91%	
Paid Participants	<u>26,936</u>	\$2,171.74	<u>28,024</u>	\$2,227.25	<u>27,933</u>	\$2,227.34
		\$58,502		\$62,416		\$62,216
Additional Training Assemblies						
Flight Training	1,449	\$ 48.14	1,500	\$ 50.02	1,500	\$ 50.03
Training Preparation	<u>12,041</u>	<u>44.64</u>	<u>12,500</u>	<u>46.38</u>	<u>13,500</u>	<u>46.39</u>
		\$ 608		\$ 655		\$ 701
Subtotal						
TOTAL		\$59,110		\$63,071		\$62,917

Change from FY 1986 to FY 1987: The decrease of \$154 from \$63,071 in FY 1986 to \$62,917 in FY 1987 is basically the result of an average strength decrease of 108, offset by an increase of 1,000 additional training assemblies.

Individual Clothing and Uniform Allowances, Officers: These funds will provide for the initial payment and supplemental allowances under the provisions of 37 U.S.C. 415 and 416 to officers for purchase of required uniforms:
(Amounts in Thousands)

	FY 1985		FY 1986		FY 1987	
	Number	Rate	Number	Rate	Number	Rate
Additional Uniform Allowance	715	\$50.00	758	\$50.00	795	\$50.00
		\$ 36		\$ 38		\$ 40

Change from FY 1986 to FY 1987: The increase of \$2 from \$38 in FY 1986 to \$40 in FY 1987 is a result of an increase of 147 officers.

Individual Clothing Allowances, Enlisted: The funds requested will provide for prescribed clothing for enlisted personnel furnished under clothing issue-in-kind system as authorized by the Secretary of Defense under the provisions of 37 U.S.C. 418 - Includes clothing for prior service personnel regaining active drilling status.
(Amounts in Thousands)

	FY 1985		FY 1986		FY 1987	
	Number	Rate	Number	Rate	Number	Rate
Replacement Issue	31,760	\$51.14	33,413	\$51.14	33,305	\$51.14
		\$1,624		\$1,708		\$1,703

Change from FY 1986 to FY 1987: The decrease of \$5 from \$1,708 in FY 1986 to \$1,703 in FY 1987, is a result of the average strength decrease of 108 enlisted personnel.

Subsistence of Enlisted Personnel: These funds are requested to provide for subsistence and subsistence allowances for enlisted personnel on active duty training and inactive duty training periods of eight hours or more in any one calendar day.

	FY 1985		FY 1986		FY 1987	
	Number	Rate	Number	Rate	Number	Rate
<u>Active Duty Requirement:</u>						
Subsistence-in-kind						
Total Enlisted Mandays & Present	389,522		405,272		403,900	
	668		668		668	
Total Active Duty Requirement	257,085	\$ 3.80	267,480	\$ 3.65	266,574	\$ 3.70
		\$ 977		\$ 976		\$ 986
<u>Inactive Duty Requirements:</u>						
Inactive Duty Training Periods of eight hours or more & Present for Meals	1,293,024		1,345,152		1,340,784	
Total Inactive Duty Requirements	748		748		748	
	956,838	\$ 4.50	995,412	\$ 4.71	992,180	\$ 4.91
		\$4,306		\$4,689		\$4,872
Total Subsistence-in-kind		\$5,283		\$5,665		\$5,858

Change from FY 1986 to FY 1987: The increase of \$193 from \$5,665 in FY 1986 to \$5,858 in FY 1987 is a result of the average strength decrease of 108 enlisted personnel, offset by the increase in the approved rates.

Travel, Active Duty for Training, Officers: These funds are requested to provide for travel and per diem allowances for officers to perform active duty training:

		FY 1985		FY 1986		FY 1987	
	Amount	Number	Rate	Number	Rate	Number	Rate
	\$ 892	3,001	\$320.23	\$ 961	3,146	\$331.57	\$ 1,043

(Amounts in Thousands)

Change from FY 1986 to FY 1987: The increase of \$82 from \$961 in FY 1986 to \$1,043 in FY 1987 is the result of the officer average strength increase of 147, along with inflation applied to the transportation portion of the travel rate.

Travel, Active Duty for Training, Enlisted: These funds are requested to provide for travel and per diem allowances for enlisted personnel to perform active duty training:

		FY 1985		FY 1986		FY 1987	
	Amount	Number	Rate	Number	Rate	Number	Rate
	\$ 8,674	28,948	\$314.89	\$ 9,115	28,850	\$326.21	\$ 9,411

(Amounts in Thousands)

Change from FY 1986 to FY 1987: The increase of \$296 from \$9,115 in FY 1986 to \$9,411 in FY 1987 is the result of the enlisted average strength decrease of 108, offset by inflation applied to the transportation portion of the travel rate.

	FY 1985 Est	FY 1986 Est	FY 1987 Est
<u>Reimbursable Requirements:</u>			
Sale of meals to officers during multiple drills	\$ 96	\$ 96	\$ 95
Surcharge Payments	50	50	50
Pay and allowances including travel of reserve officers assigned to Selective Service Units	19	19	20
Total Reimbursable Requirements	\$165	\$165	\$165

(In Thousands of Dollars)

Actual	Estimate	Estimate
Fiscal Year 1985	Fiscal Year 1986	Fiscal Year 1987
\$1,604	\$1,778	\$2,215

Appropriation: Reserve Personnel, Marine Corps
Budget Program 1: Unit and Individual Training
Budget Activity 1B: Training, Pay Group B

Part I - Purpose and Scope

Pay Group B identifies Selected Marine Corps Reserve personnel authorized to attend 24 training assemblies (drills) and 15 days annual training as Individual Mobilization Augmentees (IMA). These personnel are preassigned to fill mobilization billets on or shortly after M-day. Billets to be filled are broadly categorized to Fleet Marine Force augmentation, non-Fleet Marine Force augmentation, SMCR unit augmentation, mobilization station personnel, and mobilization support.

SCHEDULE OF INCREASES AND DECREASES
(In Thousands of Dollars)
Pay Group B

AMOUNT
\$1,778

FY 1986 DIRECT PROGRAM

Increase:		
<u>Officers Pay and Allowances</u>	-----	388
The increase is a result of an increase in average strength of 53 officers.		
<u>Enlisted Pay and Allowances</u>	-----	14
The increase is a result of an increase in average strength of 6 enlisted.		
<u>Clothing</u>	-----	1
The increase is the result of an increase in average strength of 53 officers.		
<u>Enlisted Subsistence</u>	-----	1
The increase is the result of an increase in average enlisted personnel strength of 6, coupled with the approved subsistence rates.		
<u>Travel</u>	-----	33

437

-0-

\$2,215

Total Increases:

Total Decreases:

FY 1987 DIRECT PROGRAM

Pay and Allowance Active Duty for Training, Officers: These funds are requested to provide for pay and allowances for officers attending active duty for training. The rates used in computing the requirements include basic pay, government's social security contribution, subsistence and quarters allowances, retired pay accrual, and special and incentive pay as authorized:

	FY 1985		FY 1986		FY 1987	
	Strength	Rate	Strength	Rate	Strength	Rate
Average Strength	183		164		217	
Participation Rate	99%		99%		99%	
Paid Participants	182	\$3,109.95	162	\$3,188.35	214	\$3,184.09
		\$566		\$517		\$ 681

(Amounts in Thousands)

Change from FY 1986 to FY 1987: The increase of \$164 from \$517 in FY 1986 to \$681 in FY 1987 is due to an increase in average strength of 53 officers.

Pay and Allowances Active Duty for Training, Enlisted Personnel: These funds are requested to provide for pay and allowances of enlisted personnel attending active duty for training. The rates used in computing the requirements include basic pay, government's social security contribution, quarters allowances, retired pay accrual, and special and incentive pay as authorized:

	FY 1985		FY 1986		FY 1987	
	Strength	Rate	Strength	Rate	Strength	Rate
Average Strength	51		138		144	
Participation Rate	98%		98%		98%	
Paid Participants	50	\$1,207.70	136	\$1,242.65	141	\$1,241.13
		\$ 60		\$169		\$ 175

(Amounts in Thousands)

Change from FY 1986 to FY 1987: An increase of \$6 from \$169 in FY 1986 to \$175 in FY 1987 is due to an increase in average strength of 6 enlisted.

Pay, Inactive Duty Training, Officers: These funds are requested to provide for pay of officers attending inactive duty for training. The rate used in computing the requirement includes basic pay and retired pay accrual only:

(Amounts in Thousands)

	FY 1985		FY 1986		FY 1987	
	Strength	Rate	Strength	Rate	Strength	Rate
Average Strength Units	183		164		217	
Participation Rate	99%		99%		99%	
Paid Participants	182	\$4,296.55	162	\$4,351.85	214	\$4,341.12
		\$782		\$705		\$929

Change from FY 1986 to FY 1987: The increase of \$224 from \$705 in FY 1986 to \$929 in FY 1987 is due to an increase in average strength of 53 officers.

Pay, Inactive Duty Training, Enlisted: These funds are requested to provide for pay of enlisted personnel attending inactive duty for training. The rate used in computing the requirement includes basic pay and retired pay accrual only:

(Amounts in Thousands)

	FY 1985		FY 1986		FY 1987	
	Strength	Rate	Strength	Rate	Strength	Rate
Average Strength Units	51		138		144	
Participation Rate	98%		98%		98%	
Paid Participants	50	\$1,588.88	136	\$1,632.35	141	\$1,631.21
		\$ 79		\$222		\$230

Change from FY 1986 to FY 1987: An increase of \$8 from \$222 in FY 1986 to \$230 in FY 1987 is a result of an increase in average strength of 6 enlisted.

Individual Clothing and Uniform Allowances, Officers: These funds provide for the initial payment and supplemental allowances under the provisions of 37 U.S.C. 415 and 416 to officers for purchase of required uniforms:

(Amounts in Thousands)

	FY 1985		FY 1986		FY 1987	
	Number	Rate, Amount	Number	Rate, Amount	Number	Rate, Amount
Additional Uniform Allowance	46	\$50.00 \$2	41	\$50.00 \$2	54	\$50.00 \$3

Change from FY 1986 to FY 1987: The increase of \$1 from \$2 in FY 1985 to \$3 in FY 1986 is a result of an increase of 53 average strength for officers.

Individual Clothing and Uniform Allowances, Enlisted: The funds requested will provide for prescribed clothing for enlisted personnel as authorized by the Secretary of Defense under the provisions of 37 U.S.C. 418:

(Amounts in Thousands)

	FY 1985		FY 1986		FY 1987	
	Number	Rate, Amount	Number	Rate, Amount	Number	Rate, Amount
Replacement Issue	51	\$36.85 \$2	136	\$36.85 \$5	141	\$36.85 \$5

Subsistence of Enlisted Personnel: These funds are requested to provide for subsistence and subsistence allowances for enlisted personnel on active duty training and inactive duty training periods of eight hours or more in any one calendar day.

	FY 1985		FY 1986		FY 1987	
	Number	Rate, Amount	Number	Rate, Amount	Number	Rate, Amount
Active Duty Requirement:						
Active Duty Training Periods	700		1,904		1,974	
& Present for Meals	668		668		668	
Total Active Duty	462	\$ 3.80 \$ 2	1,257	\$ 3.65 \$ 5	1,303	\$ 3.70 \$ 5

(Amounts in Thousands)

	FY 1985		FY 1986		FY 1987	
	Number	Rate	Number	Rate	Number	Rate
Inactive Duty Requirement:						
Inactive Duty Training Periods	1,200		3,264		3,384	
& Present for Meals	748		748		748	
Total Inactive Duty Requirement	888	\$ 4.50	2,415	\$ 4.71	2,704	\$ 4.91

Change from FY 1986 to FY 1987: An increase of \$1 from \$11 in FY 1986 to \$12 in FY 1987 is a result of an increase in average strength of 6 enlisted personnel, along with the approved subsistence rates.

Travel, Active Duty for Training, Officers: These funds are requested to provide for travel and per diem allowances for officers to perform active duty training:

(Amounts in Thousands)

	FY 1985		FY 1986		FY 1987	
	Number	Rate	Number	Rate	Number	Rate
	182	\$463.26	\$84	162	\$480.34	\$ 78
					214	\$497.35
						\$106

Change from FY 1986 to FY 1987: The increase of \$28 from \$78 in FY 1986 to \$106 in FY 1987 is a result of an increase in average strength of 53 officers, along with inflation applied to the transportation portion of the travel rate.

Travel, Active Duty for Training, Enlisted: These funds are requested to provide for travel and per diem allowances for enlisted personnel to perform active duty training:

(Amounts in Thousands)

	FY 1985		FY 1986		FY 1987	
	Number	Rate	Number	Rate	Number	Rate
	50	\$455.65	\$23	136	\$472.51	\$ 64
					141	\$489.52
						\$ 69

Change from FY 1986 to FY 1987: The increase of \$5 from \$64 in FY 1986 to \$69 in FY 1987 is a result of an increase in average strength of 6 enlisted personnel, along with inflation applied to the transportation portion of the travel rate.

Appropriation: Reserve Personnel, Marine Corps
Budget Program 1: Unit and Individual Training
Budget Activity 1C: Training Pay Group C

Actual	Estimate	Estimate
Fiscal Year 1985	Fiscal Year 1986	Fiscal Year 1987
\$101	\$189	\$243

Part I - Purpose and Scope

Pay Group C identifies Selected Marine Corps Reserve personnel authorized to attend 12 training assemblies (drills) and 15 days annual training as Individual Mobilization Augmentees (IMA). These personnel are preassigned to fill mobilization billets on or shortly after M-day. Billets to be filled by Pay Group C IMA's are broadly categorized to provide Fleet Marine Force augmentation, non-Fleet Marine Force augmentation, SMCR unit augmentation, and mobilization support.

SCHEDULE OF INCREASES AND DECREASES
(In Thousands of Dollars)
Pay Group C

AMOUNT
\$189

FY 1986 DIRECT PROGRAM

Increases:

Officer Pay and Allowances ----- 46

The increase is the result of an increase in average Officer strength of 9.

Enlisted Pay and Allowances ----- 3

The increase is the result of an increase in average Enlisted strength of 2.

Travel ----- 5

The increase is the result of an increase in average enlisted strength of 2 and average officer strength of 9, coupled with inflation applied to the transportation portion of the travel rate.

Total Increases: 54

Total Decreases: -0-

FY 1987 DIRECT PROGRAM

\$243

Pay and Allowance Active Duty for Training, Officers: These funds are requested to provide for pay and allowances for officers attending active duty for training. The rates used in computing the requirements include basic pay, government's social security contribution, subsistence and quarters allowances, retired pay accrual, and special and incentive pay as authorized:

	FY 1985		FY 1986		FY 1987	
	Strength	Rate Amount	Strength	Rate Amount	Strength	Rate Amount
Average Strength	12		21		30	
Participation Rate	98%		98%		98%	
Paid Participants	<u>12</u>	\$3,208.37 \$ 39	<u>21</u>	\$3,296.72 \$ 69	<u>29</u>	\$3,297.73 \$ 96

Change from FY 1986 to FY 1987: The increase of \$27 from \$69 in FY 1986 to \$96 in FY 1987 is a result of an increase in average strength of 9 officers.

Pay and Allowances Active Duty for Training, Enlisted Personnel: These funds are requested to provide for pay and allowances of enlisted personnel attending active duty for training. The rates used in computing the requirements include basic pay, government's social security contribution, quarters allowances, retired pay accrual, and special and incentive pay as authorized:

	FY 1985		FY 1986		FY 1987	
	Strength	Rate Amount	Strength	Rate Amount	Strength	Rate Amount
Average Strength	12		24		26	
Participation Rate	98%		98%		98%	
Paid Participants	<u>12</u>	\$1,208.34 \$ 15	<u>24</u>	\$1,224.37 \$ 29	<u>25</u>	\$1,225.26 \$ 31

Change from FY 1986 to FY 1987: The increase of \$2 from \$29 in FY 1986 to \$31 in FY 1987 is a result of an increase in average strength of 2 enlisted.

Pay, Inactive Duty Training, Officers: These funds are requested to provide for pay of officers attending inactive duty for training. The rate used in computing the requirement includes basic pay and retired pay accrual only:

(Amounts in Thousands)

	FY 1985		FY 1986		FY 1987	
	Strength	Rate	Strength	Rate	Strength	Rate
Average Strength Units	12		21		30	
Participation Rate	98%		98%		98%	
Paid Participants	12	\$2,155.60	21	\$2,258.41	29	\$2,259.16
		\$ 26		\$ 47		\$ 66

Change from FY 1986 to FY 1987: The increase of \$19 from \$47 in FY 1986 to \$66 in FY 1987 is a result of an increase in average strength of 9 officers.

Pay, Inactive Duty Training, Enlisted: These funds are requested to provide for pay of enlisted personnel attending inactive duty for training. The rate used in computing the requirement includes basic pay and retired pay accrual only:

(Amounts in Thousands)

	FY 1985		FY 1986		FY 1987	
	Strength	Rate	Strength	Rate	Strength	Rate
Average Strength Units	12		24		26	
Participation Rate	98%		98%		98%	
Paid Participants	12	\$ 801.15	24	\$ 837.24	25	\$ 839.36
		\$ 10		\$ 20		\$ 21

Change from FY 1986 to FY 1987: The increase of \$1 from \$20 in FY 1986 to \$21 in FY 1987 is a result of an increase in average strength of 2 enlisted.

Individual Clothing and Uniform Allowances, Officers: These funds provide for the initial payment and supplemental allowances under the provisions of 37 U.S.C. 415 and 416 to officers for purchase of required uniforms:

(Amounts in Thousands)

	FY 1985		FY 1986		FY 1987	
	Number	Rate	Number	Rate	Number	Rate
Additional Uniform Allowance	3	\$50.00	\$*	5	\$ 50.00	\$ *
					8	\$ 50.00

Individual Clothing and Uniform Allowances, Enlisted: The funds requested will provide for prescribed clothing for enlisted personnel as authorized by the Secretary of Defense under the provisions of 37 U.S.C. 418:

(Amounts in Thousands)

	FY 1985		FY 1986		FY 1987	
	Number	Rate	Number	Rate	Number	Rate
Replacement Issue	12	\$36.85	\$*	24	\$ 36.85	\$ 1
					26	\$ 36.85

Subsistence of Enlisted Personnel: These funds are requested to provide for subsistence and subsistence allowances for enlisted personnel on active duty training and inactive duty training periods of eight hours or more in any one calendar day.

(Amounts in Thousands)

	FY 1985		FY 1986		FY 1987	
	Number	Rate	Number	Rate	Number	Rate
Active Duty Requirement:						
Active Duty Training Periods	168		336		350	
& Present for Meals	668		668		668	
Total Active Duty Requirement	836	\$ 3.80	\$*	1004	1018	\$ 3.70
					231	\$ 3.70

*Less than \$1 thousand

(Amounts in Thousands)

	<u>FY 1985</u>	<u>FY 1986</u>	<u>FY 1987</u>
	<u>Number</u>	<u>Number</u>	<u>Number</u>
	<u>Rate</u>	<u>Rate</u>	<u>Rate</u>
	<u>Amount</u>	<u>Amount</u>	<u>Amount</u>
Inactive Duty Requirement:			
Inactive Duty Training Periods	144	288	300
& Present for Meals	748	748	748
Total Inactive Duty Requirement	107	213	222
	\$ 4.50	\$ 4.71	\$ 4.91
	\$*	\$ 1	\$ 1

These funds are requested to provide for travel and per diem allowances for officers to perform active duty training:

(Amounts in Thousands)

	<u>FY 1985</u>	<u>FY 1986</u>	<u>FY 1987</u>
	<u>Number</u>	<u>Number</u>	<u>Number</u>
	<u>Rate</u>	<u>Rate</u>	<u>Rate</u>
	<u>Amount</u>	<u>Amount</u>	<u>Amount</u>
	12	21	29
	\$ 463.26	\$ 480.34	\$ 497.35
	\$ 6	\$ 10	\$ 14

The increase of \$4 from \$10 in FY 1986 to \$14 in FY 1987 is a result of an increased average officer strength of 9.

These funds are requested to provide for travel and per diem allowances for enlisted personnel to perform active duty training:

(Amounts in Thousands)

	<u>FY 1985</u>	<u>FY 1986</u>	<u>FY 1987</u>
	<u>Number</u>	<u>Number</u>	<u>Number</u>
	<u>Rate</u>	<u>Rate</u>	<u>Rate</u>
	<u>Amount</u>	<u>Amount</u>	<u>Amount</u>
	12	24	25
	\$ 455.65	\$ 472.51	\$ 489.52
	\$ 5	\$ 11	\$ 12

The increase of \$1 from \$11 in FY 1986 to \$12 in FY 1987 is a result of an increased average enlisted strength of 2.

* Less than \$1 thousand

(In Thousands of Dollars)			
Actual	Estimate	Estimate	
Fiscal Year 1985	Fiscal Year 1986	Fiscal Year 1987	
\$61,826	\$61,031	\$68,785	

Appropriation: Reserve Personnel, Marine Corps
 Budget Program 1: Paid Drill and Initial Training
 Budget Activity 1F: Training, Pay Group F

Part I - Purpose and Scope

Title 10, United States Code, Section 511, authorizes a program whereby non-prior service personnel may enlist in the Marine Corps Reserve for a period of eight years, of which not less than twelve weeks must be spent on initial active duty for training. Funds requested in Pay Group "F" are used for pay and allowances and other personnel costs incurred during this period of initial active duty for training. All trainees are enlisted for a pre-identified Military Occupational Specialty (MOS) and receive recruit training at Marine Corps Recruit Depots, during which time they are integrated with Regular Marine Corps Recruits. Aviation trainees proceed to formal schools conducted by the Marine Corps and other services. Ground trainees proceed to either technical, specialist, or Military Occupational Specialty Training.

SCHEDULE OF INCREASES AND DECREASES
(In Thousands of Dollars)
Pay Group F

AMOUNT
\$61,031

FY 1986 DIRECT PROGRAM

Increases:

Enlisted Pay and Allowances ----- 5,999

- The increase is the result of an increase in average number of trainees of 1,090.

Enlisted Subsistence ----- 556

- The increase is the result of an increase in the average number of trainees of 1,090, coupled with an increase in the approved subsistence rates.

Clothing ----- 1,214

- The increase is the result of an increase in the number of trainees receiving the initial clothing and uniform allowance.

Total Increases: 7,769

Decreases:

Travel ----- -15

- The decrease is the result of a decrease in the number of travelers, offset by inflation applied to the transportation portion of the travel rate.

Total Decreases: -15

FY 1987 DIRECT PROGRAM

\$68,785

Pay and Allowances, Active Duty for Training, Enlisted: These funds are requested to provide for pay and allowances of enlisted personnel attending active duty for training. The rate used in computing the requirements includes basic pay, retired pay accrual, government's contribution for social security, and quarters allowance when authorized.

(Amounts in Thousands)

FY 1985		FY 1986		FY 1987	
Number of Trainees	Rate	Number of Trainees	Rate	Number of Trainees	Rate
9,275	\$5,123.69	8,477	\$5,507.51	9,567	\$5,507.06
	\$47,522		\$46,687		\$52,686

Change from FY 1986 to FY 1987: The increase of \$5,999 from \$46,687 in FY 1986 to \$52,686 in FY 1987 is the result of the increase of 1,090 trainees serving an average tour length of 155 days.

Individual Clothing and Uniform Allowance, Enlisted: These funds are requested to provide clothing and uniforms for enlisted personnel attending initial active duty for training.

(Amounts in Thousands)

FY 1985		FY 1986		FY 1987	
Number of Trainees	Rate	Number of Trainees	Rate	Number of Trainees	Rate
9,275	\$569.99	8,477	\$585.10	9,567	\$645.36
	\$5,287		\$4,960		\$6,174

Change from FY 1986 to FY 1987: The increase of \$1,214 from \$4,960 in FY 1986 to \$6,174 in FY 1987 is the result of the increase of 1,090 trainees. (The above rates include funds for alterations.)

Subsistence, Enlisted Personnel: These funds are requested to provide for subsistence for enlisted personnel attending initial active duty training.

(Amounts in Thousands)

	FY 1985		FY 1986		FY 1987	
	Number	Rate	Number	Rate	Number	Rate
Subsistence-in-Kind	1,446,900		1,305,458		1,473,318	
Total Mandays		81%		81%		81%
Percent Present						
Total Subs-in-Kind	1,171,366	\$ 3.75	1,057,421	\$ 3.65	1,193,388	\$ 3.70
		\$ 4,396		\$ 3,860		\$ 4,416

Change from FY 1986 to FY 1987: The increase of \$556 from \$3,860 in FY 1986 to \$4,416 in FY 1987 is the result of the increase of 1,090 trainees, coupled with an increase in the approved subsistence rates.

Travel, Active Duty for Training, Enlisted: These funds are requested for travel for enlisted personnel to perform initial active duty training.

(Amounts in Thousands)

	FY 1985		FY 1986		FY 1987	
	Number	Rate	Number	Rate	Number	Rate
Subsistence-in-Kind	19,045	\$242.61	21,992	\$251.16	21,205	\$259.82
Total Mandays		\$4,621		\$5,524		\$5,509

Change from FY 1986 to FY 1987: The decrease of \$15 from \$5,524 in FY 1986 to \$5,509 in FY 1987 is the result of a decrease in the number travelling, offset by inflation applied to the transportation portion of the travel rates.

Appropriation: Reserve Personnel, Marine Corps
Budget Program 1: Unit and Individual Training
Budget Activity 1P: Training, Pay Group P

Actual	Estimate	Estimate
Fiscal Year 1985	Fiscal Year 1986	Fiscal Year 1987
\$287	\$233	\$227

Part I - Purpose and Scope

Pay Group P identifies enlistees in a drill and pay status prior to Initial Active Duty for Training. Eligible personnel must be high school students due to complete high school and enter active duty for training within nine months after enlistment. Funds requested in Pay Group P are used for pay and allowances, subsistence and the issuance of a partial clothing allowance.

This budget includes funds to support an average strength of 205 enlistees in FY 1986 and 199 enlistees in FY 1987.

SCHEDULE OF INCREASES AND DECREASES
(In Thousands of Dollars)
Pay Group P

AMOUNT
\$ 233

-0-

FY 1986 DIRECT PROGRAM

Total Increases:

Decreases:

Enlisted Pay and Allowances ----- -6

- The decrease is the result of a reduction in the number of training assemblies (-194) due to an average strength decrease of 6.

Total Decreases:

-6

FY 1987 DIRECT PROGRAM:

\$ 227

Pay, Inactive Duty Training, Enlisted: The funds requested are to provide for pay of enlisted personnel attending inactive duty for training while awaiting initial active duty training. The rate used in computing the requirement is based on basic pay and retired pay accrual.

(Amounts in Thousands)

FY 1985	
<u>Assemblies</u>	<u>Rate</u>
8,132	\$28.81
	<u>Amount</u>
	\$ 234

FY 1987	
<u>Assemblies</u>	<u>Rate</u>
6,448	\$29.68
	<u>Amount</u>
	\$ 191

Change from FY 1986 to FY 1987: The decrease of \$6 from \$197 in FY 1986 to \$191 in FY 1987 is a result of a reduction of 194 training assemblies due to an average strength decrease of 6.

Individual Clothing and Uniform Allowances, Enlisted: The funds requested are to provide for prescribed clothing for enlisted personnel as authorized by the Secretary of Defense under the provisions of 37 U.S.C. 418.

(Amounts in Thousands)

FY 1985	
<u>Number</u>	<u>Rate</u>
251	\$62.97
	<u>Amount</u>
	\$ 16

FY 1987	
<u>Number</u>	<u>Rate</u>
199	\$64.61
	<u>Amount</u>
	\$ 13

Subsistence of Enlisted Personnel: The funds requested are to provide for subsistence for enlisted personnel participating in inactive duty period of eight hours or more in any one calendar day.

(Amounts in Thousands)

FY 1985	
<u>Number</u>	<u>Rate</u>
8,132	
6,018	\$ 4.50
	<u>Amount</u>
	\$ 37

FY 1987	
<u>Number</u>	<u>Rate</u>
6,448	
748	\$ 4.91
	<u>Amount</u>
	\$ 23

FY 1986	
<u>Number</u>	<u>Rate</u>
6,642	
748	\$ 4.71
	<u>Amount</u>
	\$ 23

FY 1987	
<u>Number</u>	<u>Rate</u>
6,448	
748	\$ 4.91
	<u>Amount</u>
	\$ 23

Appropriation: Reserve Personnel, Marine Corps
Budget Program 1: Unit and Individual Training
Budget Activity 1D: Training, Pay Group D

(In Thousands of Dollars)

Actual	Estimate	Estimate
Fiscal Year 1985	Fiscal Year 1986	Fiscal Year 1987
\$18	\$-0-	\$-0-

Part I - Purpose and Scope

Pay Group D identifies Selected Marine Corps Reserve personnel authorized to attend 15 days annual training as Individual Mobilization Augmentees (IMA's). These personnel are preassigned to fill mobilization billets on or shortly after M-day. Billets to be filled are broadly categorized to provide Fleet Marine Force augmentation, non-Fleet Marine Force augmentation, SMCR unit augmentation and mobilization support.

In recent years, drilling reservist's participation has declined due to the lack of required points for retirement. The current administrative burden of this pay group is no longer cost effective. Therefore, this pay group is being dropped, with the shift to strength going to other pay groups.

Pay and Allowances Active Duty for Training, Officers: The Fiscal Year 1985 funds provided for pay and allowances of officers attending active duty for training. The rates used in computing requirements include basic pay, retired pay accrual, government's social security contributions, subsistence and quarters allowances, and special and incentive pay as authorized:

FY 1985			FY 1986			FY 1987		
No. of Participants	Rate	Amount	No. of Participants	Rate	Amount	No. of Participants	Rate	Amount
6	\$2,566.83	\$15	-	-	-	-	-	-

Travel, Active Duty for Training, Officers: The Fiscal Year 1985 funds provided for travel and per diem allowances for officers to perform active duty training:

FY 1985			FY 1986			FY 1987		
Number	Rate	Amount	Number	Rate	Amount	Number	Rate	Amount
6	\$ 463.26	\$3	-	-	-	-	-	-

Appropriation: Reserve Personnel, Marine Corps
Budget Program 2: Other Training and Support
Budget Activity 2E: Mobilization Training

Actual	Estimate	Estimate
Fiscal Year 1985	Fiscal Year 1986	Fiscal Year 1987
\$2,623	\$2,415	\$9,671

Part I - Purpose and Scope

This program provides the training necessary to increase and maintain mobilization readiness for certain members of the IRR in order to satisfy mobilization requirements.

Tour lengths average 13 days, which consist of 12 days training, and an average of one day of travel.

During FY 1987, \$7 million has been included to cover an involuntary one day, active duty screening of the entire (Service) Individual Ready Reserve (IRR). IRR members will subsequently be required to serve at least one day of active duty each year to accomplish annual screening requirements.

SCHEDULE OF INCREASES AND DECREASES
(In Thousands of Dollars)
Mobilization Training

AMOUNT
\$2,415

FY 1986 DIRECT PROGRAM

Increases: 567
Officer Pay and Allowances -----

- The increase is the result of the following;

- An increase of 76 officer participants. 167
- The estimated apportionment of the FY 1987 mobilization test. 400

Enlisted Pay and Allowance ----- 3,429

- The increase is the result of the following;

- An increase of 36 enlisted participants. 29
- The estimated apportionment of the FY 1987 mobilization test. 3,400

Subsistence of Enlisted Personnel ----- 2

- The increase is the result of an increase of 36 enlisted participants, coupled with the increase in the approved subsistence rates.

Travel ----- 3,258

- The increase is the result of the following;

- An increase of 76 officer participants coupled with inflation applied to the transportation portion of the travel rate. 38
- An increase of 36 enlisted participants, coupled with inflation applied to the transportation portion of the travel rate. 20
- The estimated officer travel apportionment of the FY 1987 mobilization test. 350
- The estimated enlisted travel apportionment of the FY 1987 mobilization test. 2,850

Total Increases: 7,256

Total Decreases: -0-

FY 1987 DIRECT PROGRAM

\$9,671

Pay and Allowances Active Duty for Training, Officers: These funds are requested to provide for pay and allowances of officers attending active duty for training. The rate used in computing requirements includes basic pay, retired pay accrual, government's social security contributions, subsistence and quarters allowances, and special and incentive pay as authorized:

	FY 1985		FY 1986		FY 1987	
	Number	Rate	Number	Rate	Number	Rate
Officers	804	\$2,109.09	718	\$2,157.38	794	\$2,161.21
Mob Test	-	-	-	-	-	-
Total		\$1,696		\$1,549		\$2,116

Change from FY 1986 to FY 1987: The increase of \$567 from \$1,549 in FY 1986 to \$2,116 in FY 1987 is the result of an increase of 76 officer participants, coupled with the estimated FY 1987 mobilization test apportionment.

Pay and Allowances Active Duty for Training, Enlisted Personnel: These funds are requested to provide for pay and allowances of enlisted personnel attending active duty for training. The rate used in computing requirements includes basic pay, retired pay accrual, government's social security contributions, quarters allowances, and special and incentive pay as authorized.

	FY 1985		FY 1986		FY 1987	
	Number	Rate	Number	Rate	Number	Rate
Enlisted	551	\$ 779.67	504	\$ 799.60	540	\$ 800.01
Mob Test	-	-	-	-	-	-
Total		\$ 430		\$ 403		\$3,832

Change from FY 1986 to FY 1987: The increase of \$3,429 from \$403 in FY 1986 to \$3,832 in FY 1987 is the result of an increase of 36 enlisted participants, coupled with the estimated FY 1987 mobilization test apportionment.

Subsistence of Enlisted Personnel: These funds are requested to provide subsistence allowance for enlisted personnel on active duty training.

FY 1985			FY 1986			FY 1987		
Number	Rate	Amount	Number	Rate	Amount	Number	Rate	Amount
6,612	\$ 3.80	\$ 25	6,048	\$ 3.65	\$ 22	6,480	\$ 3.70	\$ 24

(Amounts in Thousands)

Change from FY 1986 to FY 1987: The increase of \$2 from \$22 in FY 1986 to \$24 in FY 1987 is the result of an increase of 36 enlisted participants, coupled with an increase in the approved subsistence rates.

Travel, Active Duty for Training, Officers: These funds are requested to provide for travel and per diem allowances for officers in performance of active duty training:

FY 1985			FY 1986			FY 1987		
Number	Rate	Amount	Number	Rate	Amount	Number	Rate	Amount
804	\$351.02	\$ 282	718	\$363.20	\$ 261	794	\$376.34	\$ 299
		-			-			350
		\$ 282			\$ 261			\$ 649

(Amounts in Thousands)

Change from FY 1986 to FY 1987: The increase of \$388 from \$261 in FY 1986 to \$649 in FY 1987 is the result of an increase of 76 officer participants, coupled with inflation applied to the transportation portion of the travel rate. Also included is the estimated FY 1987 mobilization test apportionment.

Travel, Active Duty for Training, Enlisted: These funds are requested to provide for travel and per diem allowances for enlisted personnel in performance of active duty training:

FY 1985			FY 1986			FY 1987		
Number	Rate	Amount	Number	Rate	Amount	Number	Rate	Amount
551	\$344.93	\$ 190	504	\$357.98	\$ 180	540	\$371.12	\$ 200
		-			-			2,850
		\$ 190			\$ 180			\$3,050

(Amounts in Thousands)

Change from FY 1986 to FY 1987: The increase of \$2,870 from \$180 in FY 1986 to \$3,050 in FY 1987 is the result of an increase of 36 enlisted participants, coupled with inflation applied to the transportation portion of the travel rate. Also included is the estimated FY 1987 mobilization test apportionment.

(In Thousands of Dollars)			
Actual	Estimate	Estimate	
Fiscal Year 1985	Fiscal Year 1986	Fiscal Year 1987	
\$12,094	\$9,031	\$9,066	

Appropriation: Reserve Personnel, Marine Corps
 Budget Program 2: Other Training and Support
 Budget Activity 2R: School Training

Part I - Purpose and Scope

This program is designed to augment initial active duty training and other previously attained skills by providing additional instruction in a broad range of subjects to Ready Reserve personnel. Career development courses such as Command and Staff, Amphibious Warfare, Staff NCO Academy and Amphibious Planning keep the reservists proficient with new weapons, doctrine, and techniques. Refresher programs bring a reservist up-to-date in his particular Military Occupational Specialty (MOS). This program also provides necessary formal training when an individual is assigned a different MOS or when a unit is assigned a new mission. Also, an intensive period of biennial refresher training and training for transition to new aircraft is provided through this program for aviators in tactical flying units, and the assignment of Individual Ready Reservists to professional and occupational field training.

SCHEDULE OF INCREASES AND DECREASES
(In Thousands of Dollars)
School Training

	AMOUNT
FY 1986 DIRECT PROGRAM	\$ 9,031
Increases:	
<u>Travel</u> -----	62
- The increase is the net result of a participant decrease of 5, offset by inflation applied to the transportation rate.	
Total Increases:	62
Decreases:	
<u>Pay and Allowances</u> -----	-27
- The decrease is the result of a decrease of 75 mandays created by a 5 participant decrease.	
Total Decreases:	-27
FY 1987 DIRECT PROGRAM	\$ 9,066

DETAIL OF REQUIREMENTS -- School Training
(Amounts in Thousands)

REFRESHER AND PROFICIENCY TRAINING: Provides that formal school training necessary to attain and maintain the required level of proficiency in a specific Military Occupational Speciality (MOS) for which a member has been initially qualified. Examples include courses such as artillery refresher, tank refresher, jungle operations, embarkation and administration. These mandays are also utilized for qualification training for aircrew members in specific aircraft; to satisfy ground requirements necessary to maintain flight proficiency and maintenance requirements; and for "hands on" training in the actual performance of those skills peculiar to an individual MOS.

	FY 1985			FY 1986			FY 1987								
	Par-tici-pants	Tour Lngth (Avg)	Man-days	Par-tici-pants	Tour Lngth (Avg)	Man-days	Par-tici-pants	Tour Lngth (Avg)	Man-days						
Officers	1,871	7	13,097	\$240.79	\$3,154	1,439	7	10,073	\$235.88	\$2,376	1,439	7	10,073	\$238.06	\$2,398

Change from FY 1986 to FY 1987: The increase of \$22 from \$2,376 in FY 1986 to \$2,398 in FY 1987 is the result of inflation applied to the transportation rate.

	FY 1985			FY 1986			FY 1987								
	Par-tici-pants	Tour Lngth (Avg)	Man-days	Par-tici-pants	Tour Lngth (Avg)	Man-days	Par-tici-pants	Tour Lngth (Avg)	Man-days						
Enlisted	2,053	10	20,530	\$123.45	\$2,534	1,598	10	15,980	\$118.65	\$1,896	1,598	10	15,980	\$120.09	\$1,919

Change from FY 1986 to FY 1987: The increase of \$23 from \$1,896 in FY 1986 to \$1,919 in FY 1987 is the result of inflation applied to the transportation rate.

<u>Subtotal</u>	3,924	33,627	\$5,688	3,037	26,053	\$4,272	3,037	26,053	\$4,317
-----------------	-------	--------	---------	-------	--------	---------	-------	--------	---------

Reserve Personnel, Marine Corps
School Training (Continued)

CAREER DEVELOPMENT: Provides selected Reserve officers and enlisted personnel formal school training required for their professional growth. Examples include Noncommissioned Officer (NCO) Leadership School, Staff NCO Academy, Amphibious Warfare School, Command and Staff School, Landing Force Planning School, and other high level and top level schools. Formal schools are generally two weeks in duration.

(Amounts in Thousands)

	FY 1985			FY 1986			FY 1987		
	Par-tici-pants (Avg)	Tour Length (Avg)	Man-Rate (Avg) Amount	Par-tici-pants (Avg)	Tour Length (Avg)	Man-Rate (Avg) Amount	Par-tici-pants (Avg)	Tour Length (Avg)	Man-Rate (Avg) Amount
<u>Officers:</u>	506	15	7,590 \$203.29 \$1,543	514	15	7,710 \$204.54 \$1,577	496	15	7,440 \$205.24 \$1,527

Change From FY 1986 to FY 1987: The decrease of \$50 from \$1,577 in FY 1986 to \$1,527 in FY 1987 is the result of a decrease in 270 mandays created by a decrease of 18 participants, offset by inflation applied to the transportation rate.

	FY 1985			FY 1986			FY 1987		
	Par-tici-pants (Avg)	Tour Length (Avg)	Man-Rate (Avg) Amount	Par-tici-pants (Avg)	Tour Length (Avg)	Man-Rate (Avg) Amount	Par-tici-pants (Avg)	Tour Length (Avg)	Man-Rate (Avg) Amount
<u>Enlisted:</u>	55	15	825 \$107.88 \$ 89	36	15	540 \$105.56 \$ 57	49	15	735 \$107.48 \$ 79

Change From FY 1986 to FY 1987: The increase of \$22 from \$57 in FY 1986 to \$79 in FY 1987 is the net result of an increase in 195 mandays created by an increase of 13 participants, coupled with inflation applied to the transportation rate.

Subtotal 561 8,415 \$1,632 550 8,250 \$1,634 545 8,175 \$1,606

Reserve Personnel, Marine Corps
School Training (Continued)

TRAINING OF IRR PERSONNEL: Provides for the assignment of Individual Ready Reservists to professional and occupational field training. Professional two week courses include Amphibious Warfare School, Command and Staff College, Naval War College, Armed Forces Staff College and Landing Force Staff Planning Courses. Occupational field training is accomplished by formal Military Occupational Specialty (MOS) refresher courses in a particular occupational field.

(Amounts in Thousands)

	FY 1985			FY 1986			FY 1987								
	Par-tici-pants	Tour Length (Avg)	Man-days	Rate (Avg)	Amount	Par-tici-pants	Tour Length (Avg)	Man-days	Rate (Avg)	Amount					
Officers	487	13	6,331	\$218.92	\$1,386	432	13	5,616	\$219.20	\$1,231	432	13	5,616	\$220.62	\$1,239

Change From FY 1986 to FY 1987: The increase of \$8 from \$1,231 in FY 1986 to \$1,239 in FY 1987 is the result of inflation applied to the transportation rate.

INITIAL SKILL ACQUISITION: These mandays are utilized by Reserve enlisted personnel to acquire a military skill (other than the MOS attained on Initial Active Duty for Training) for which there is a valid requirement in the unit to which the individual belongs. In addition, these tours provide for foreign language training deemed necessary subsequent to completion of Initial Active Duty for Training.

(Amounts in Thousands)

	FY 1985			FY 1986			FY 1987								
	Par-tici-pants	Tour Length (Avg)	Man-days	Rate (Avg)	Amount	Par-tici-pants	Tour Length (Avg)	Man-days	Rate (Avg)	Amount	Par-tici-pants	Tour Length (Avg)	Man-days	Rate (Avg)	Amount
Enlisted	641	65	41,665	\$ 78.68	\$3,278	346	65	22,490	\$79.37	\$1,785	346	65	22,490	\$ 79.55	\$1,789
<u>Change From FY 1986 to FY 1987:</u>	The increase of \$4 from \$1,785 in FY 1986 to \$1,789 in FY 1987 is the result of inflation applied to the transportation rate.														
Subtotal	1,128		47,996		\$4,664	778		28,106		\$3,016	778		28,106		\$3,028

Reserve Personnel, Marine Corps
School Training (Continued)

UNIT CONVERSION TRAINING: Provides Reservists with that training required when a unit undergoes a change or redesignation in its primary mission.

	FY 1985				FY 1986				FY 1987			
	Par- tici- pants	Tour Length (Avg)	Man- days	Rate (Avg) Amount	Par- tici- pants	Tour Length (Avg)	Man- days	Rate (Avg) Amount	Par- tici- pants	Tour Length (Avg)	Man- days	Rate (Avg) Amount
Officers	13	14	182	\$203.30 \$ 37	13	14	182	\$201.10 \$ 37	13	14	182	\$203.30 \$ 37
	FY 1985				FY 1986				FY 1987			
	Par- tici- pants	Tour Length (Avg)	Man- days	Rate (Avg) Amount	Par- tici- pants	Tour Length (Avg)	Man- days	Rate (Avg) Amount	Par- tici- pants	Tour Length (Avg)	Man- days	Rate (Avg) Amount
Enlisted	50	14	700	\$104.29 \$ 73	50	14	700	\$102.86 \$ 72	50	14	700	\$111.43 \$ 78
<p><u>Change From FY 1986 to FY 1987:</u> The increase of \$6 from \$72 in FY 1986 to \$78 in FY 1987 is the result of inflation applied to the transportation rate.</p>												
Subtotal	63	882	\$ 110	63	882	\$ 109	63	882	\$ 115			
Total	2,877	27,200	\$6,120	2,398	23,581	\$5,221	2,380	23,311	\$5,201			
Enlisted	2,799	63,720	5,974	2,030	39,710	3,810	2,043	39,905	3,865			
Total	5,676	90,920	\$12,094	4,428	63,291	\$9,031	4,423	63,216	\$9,066			

Appropriation: Reserve Personnel, Marine Corps
Budget Program 2: Other Training and Support
Budget Activity 2S: Special Training

Actual	Estimate	Estimate
Fiscal Year 1985	Fiscal Year 1986	Fiscal Year 1987
\$17,426	\$15,557	\$16,533

Part I - Purpose and Scope

This budget activity provides for pay and allowances including employers share of Social Security contribution, subsistence, travel and per diem for officers and enlisted personnel who perform short tours of active duty other than those covered by Pay Groups A, B, C, D, F, P, Mobilization Training and School Training.

The Special Tours are programmed and budgeted in seven separate categories as follows:

- (1) Exercises
- (2) Command/Staff Supervision and Conferences
- (3) Operational Training
- (4) Management Support
- (5) Service Mission/Mission Support
- (6) Competitive Events
- (7) Recruitment and Retention

The following pages indicate the requirements in each of the seven categories and describe in more detail what is covered in each category.

SCHEDULE OF INCREASES AND DECREASES

(In Thousands of Dollars)
Special Training

AMOUNT
\$15,557

FY 1986 DIRECT PROGRAM

Increases:

Pay and Allowances ----- 798

- The increase is the result of an increase of 2,823 mandays created by a 276 participant increase.

Travel ----- 178

- The increase is the net result of the participant increase described above, coupled with inflation applied to the transportation rates.

Total Increases:

976

Total Decreases:

-0-

FY 1987 DIRECT PROGRAM

\$16,533

DETAIL OF REQUIREMENTS -- Special Training
(Amounts in Thousands)

EXERCISES: Provides for Marine Corps Reserve participation in Joint Chiefs of Staff (JCS) directed and coordinated intraservice, and interservice training exercises. Also includes field training exercises and command post exercises.

(Amounts in Thousands)

	FY 1985			FY 1986			FY 1987		
	Par-tici-pants (Avg)	Tour Length (Avg) days	Man-Rate (Avg) Amount	Par-tici-pants (Avg)	Tour Length (Avg) days	Man-Rate (Avg) Amount	Par-tici-pants (Avg)	Tour Length (Avg) days	Man-Rate (Avg) Amount
Officers:	215	40	8,600 \$176.16 \$1,515	247	40	9,880 \$179.73 \$1,776	299	40	11,960 \$180.27 \$2,156
Change From FY 1986 to FY 1987:	The increase of \$380 from \$1,776 in FY 1986 to \$2,156 in FY 1987 is the result of a increase in 2,080 mandays created by a increase of 52 participants, coupled with inflation applied to the transportation rate.								
	FY 1985			FY 1986			FY 1987		
	Par-tici-pants (Avg)	Tour Length (Avg) days	Man-Rate (Avg) Amount	Par-tici-pants (Avg)	Tour Length (Avg) days	Man-Rate (Avg) Amount	Par-tici-pants (Avg)	Tour Length (Avg) days	Man-Rate (Avg) Amount
Enlisted:	342	15	5,130 \$112.87 \$579	369	15	5,535 \$110.44 \$ 611	369	15	5,535 \$111.29 \$ 616
Change From FY 1986 to FY 1987:	The increase of \$5 from \$611 in FY 1986 to \$616 in FY 1987 is the result of inflation applied to the transportation rate.								
Subtotal	557		13,730 \$2,094	616		15,415 \$2,387	668		17,495 \$2,772

Reserve Personnel, Marine Corps
Special Training (Continued)

COMMAND/STAFF SUPERVISION AND CONFERENCES: These tours provide for command/staff inspection and supervision visits made by higher headquarters to subordinate units. The effectiveness of training and the units capability to respond to wartime tasking is evaluated and compliances with directives are checked. Tours also provide for pre-annual training and coordination conferences.

(Amounts in Thousands)

	FY 1985				FY 1986				FY 1987						
	Par- tici- pants	Tour Lngth (Avg)	Man- days	Rate (Avg) Amount	Par- tici- pants	Tour Lngth (Avg)	Man- days	Rate (Avg) Amount	Par- tici- pants	Tour Lngth (Avg)	Man- days	Rate (Avg) Amount			
Officers	774	8	6,192	\$246.46	\$1,526	786	8	6,288	\$243.32	\$1,530	786	8	6,288	\$245.23	\$1,542
<p><u>Change From FY 1986 to FY 1987:</u> The increase of \$12 from \$1,530 in FY 1986 to \$1,542 in FY 1987 is the result of inflation applied to the transportation rate.</p>															
	FY 1985				FY 1986				FY 1987						
	Par- tici- pants	Tour Lngth (Avg)	Man- days	Rate (Avg) Amount	Par- tici- pants	Tour Lngth (Avg)	Man- days	Rate (Avg) Amount	Par- tici- pants	Tour Lngth (Avg)	Man- days	Rate (Avg) Amount			
Enlisted	32	8	256	\$171.88	\$ 44	29	8	232	\$163.79	\$ 38	29	8	232	\$168.10	\$ 39
<p><u>Change From FY 1986 to FY 1987:</u> The increase of \$1 from \$38 in FY 1986 to \$39 in FY 1987 is the result of inflation applied to the transportation rate.</p>															
Subtotal	806		6,448	\$1,570	815		6,520	\$1,568	815		6,520	\$1,581			

Reserve Personnel, Marine Corps
Special Training (Continued)

OPERATIONAL TRAINING: These tours provide training directly related to probable wartime tasking. They include training of an operational nature similar to that performed during inactive duty training (IDT) and annual active duty training (ADT), (exclusive of administrative support). Also, these tours provide Reserve maintenance teams to perform on-site maintenance for supported units and provide Reserve air crews for Reserve Air/Ground exercises and Reserve troop lifts.

(Amounts in Thousands)

	FY 1985				FY 1986				FY 1987						
	Par-tici-pants	Tour Lngth (Avg)	Man-days	Rate (Avg) Amount	Par-tici-pants	Tour Lngth (Avg)	Man-days	Rate (Avg) Amount	Par-tici-pants	Tour Lngth (Avg)	Man-days	Rate (Avg) Amount			
Officers	582	3	1,746	\$325.32	\$ 568	582	3	1,746	\$307.56	\$ 537	582	3	1,746	\$312.14	\$ 545
<u>Change From FY 1986 to FY 1987:</u> The increase of \$8 from \$537 in FY 1986 to \$545 in FY 1987 is the result of inflation applied to the transportation rate.															
	FY 1985				FY 1986				FY 1987						
	Par-tici-pants	Tour Lngth (Avg)	Man-days	Rate (Avg) Amount	Par-tici-pants	Tour Lngth (Avg)	Man-days	Rate (Avg) Amount	Par-tici-pants	Tour Lngth (Avg)	Man-days	Rate (Avg) Amount			
Enlisted	1,491	3	4,473	\$230.72	\$1,032	1,491	3	4,473	\$209.70	\$ 938	1,491	3	4,473	\$214.62	\$ 960
<u>Change From FY 1986 to FY 1987:</u> The increase of \$22 from \$938 in FY 1986 to \$960 in FY 1987 is the result of inflation applied to the transportation rate.															
Subtotal	2,073		6,219		\$1,600	2,073		6,219		\$1,475	2,073		6,219		\$1,505

Reserve Personnel, Marine Corps
Special Training (Continued)

MANAGEMENT SUPPORT: This activity includes support of those managerial and administrative tasks performed in support of projects directly related to training and administering of Marine Corps Reserve activities. Examples are promotion boards, development of instructional materials, exercise planning, training conferences (other than pre-annual training) and development of Marine Corps Reserve policies.

(Amounts in Thousands)

	FY 1985			FY 1986			FY 1987		
	Par-tici-pants	Tour Length (Avg)	Man-Rate (Avg) Amount	Par-tici-pants	Tour Length (Avg)	Man-Rate (Avg) Amount	Par-tici-pants	Tour Length (Avg)	Man-Rate (Avg) Amount
Officers	101	43	4,343 \$196.18 \$ 852	80	43	3,440 \$199.42 \$ 686	80	43	3,440 \$200.29 \$ 689
<u>Change From FY 1986 to FY 1987:</u> The increase of \$3 from \$686 in FY 1986 to \$689 in FY 1987 is the result of inflation applied to the transportation rate.									
	FY 1985			FY 1986			FY 1987		
	Par-tici-pants	Tour Length (Avg)	Man-Rate (Avg) Amount	Par-tici-pants	Tour Length (Avg)	Man-Rate (Avg) Amount	Par-tici-pants	Tour Length (Avg)	Man-Rate (Avg) Amount
Enlisted	558	21	11,718 \$135.19 \$1,584	501	21	10,521 \$135.35 \$1,424	501	21	10,521 \$136.01 \$1,431
<u>Change From FY 1986 to FY 1987:</u> The increase of \$7 from \$1,424 in FY 1986 to \$1,431 in FY 1987 is the result of inflation applied to the transportation rate.									
Subtotal	659	16,061	\$2,436	581	13,961	\$2,110	581	13,961	\$2,120

Reserve Personnel, Marine Corps
Special Training (Continued)

SERVICE MISSION/MISSION SUPPORT (Short Tours): Includes that training, both unit and individual, which accomplishes a specific mission or task, or supports a specific mission or task for any of the Armed Services. Includes Marine Corps Reserve support of active force missions as well as internal support rendered to Marine Corps Reserve units and agencies; for example, umpires in multi-component exercises or special work/projects requiring reserve expertise.

(Amounts in Thousands)

	FY 1985			FY 1986			FY 1987		
	Par- tici- pants	Tour Lngth (Avg) days	Man- Rate (Avg) Amount	Par- tici- pants	Tour Lngth (Avg) days	Man- Rate (Avg) Amount	Par- tici- pants	Tour Lngth (Avg) days	Man- Rate (Avg) Amount
Officers	412	35	14,420 \$198.34 \$2,860	252	35	8,820 \$202.48 \$1,786	308	35	10,780 \$202.50 \$2,183
<u>Change From FY 1986 to FY 1987:</u>	The increase of \$397 from \$1,786 in FY 1986 to \$2,183 in FY 1987 is the result of an increase in 1,960 mandays created by an increase of 56 participants, coupled with inflation applied to the transportation rate.								
	FY 1985			FY 1986			FY 1987		
	Par- tici- pants	Tour Lngth (Avg) days	Man- Rate (Avg) Amount	Par- tici- pants	Tour Lngth (Avg) days	Man- Rate (Avg) Amount	Par- tici- pants	Tour Lngth (Avg) days	Man- Rate (Avg) Amount
Enlisted	1,881	15	28,215 \$111.93 \$3,158	1,494	15	22,410 \$109.50 \$2,454	1,697	15	25,455 \$110.43 \$2,811
<u>Change from FY 1986 to FY 1987:</u>	The increase of \$357 from \$2,454 in FY 1986 to \$2,811 in FY 1987 is the result of an increase in 3,045 mandays created by an increase of 203 participants, coupled with inflation applied to the transportation rate.								
Subtotal	2,293		42,635 \$6,018 1,746			31,230 \$4,240 2,005			36,235 \$4,994

Reserve Personnel, Marine Corps
Special Training (Continued)

COMPETITIVE EVENTS: The objectives of the Competitive Events program are to:

1. Provide for special marksmanship training; conducting clinics; assist in developing marksmanship tests and instruction for olympic/international junior shooter development programs.
2. Provide for participation by individuals in various levels of competition including, on a competitive selection basis, US, international and olympic championships.
3. Provide for support of and participation in annual Interallied Confederation of Reserve Officers (ICOR) Championships and Modern Pentathlon events. These events are for individuals meeting competitive selection standards for attendance at clinics and tryouts; participation in training and fielding of those individuals to represent the US in military and olympic competitions featuring marksmanship, physical endurance events and associated military skills.

(Amounts in Thousands)

	FY 1985			FY 1986			FY 1987					
	Par-tici-pants	Tour Length (Avg)	Man-Rate (Avg)	Par-tici-pants	Tour Length (Avg)	Man-Rate (Avg)	Par-tici-pants	Tour Length (Avg)	Man-Rate (Avg)			
Officers	327	2	654 \$405.20	\$265	327	2	654 \$374.62	\$245	327	2	654 \$382.26	\$250

Change From FY 1986 to FY 1987: The increase of \$5 from \$245 in FY 1986 to \$250 in FY 1987 is the result of inflation applied to the transportation rate.

	FY 1985			FY 1986			FY 1987					
	Par-tici-pants	Tour Length (Avg)	Man-Rate (Avg)	Par-tici-pants	Tour Length (Avg)	Man-Rate (Avg)	Par-tici-pants	Tour Length (Avg)	Man-Rate (Avg)			
Enlisted	745	2	1,490 \$306.04	\$456	745	2	1,490 \$273.15	\$407	745	2	1,490 \$280.54	\$418

Change From FY 1986 to FY 1987: The increase of \$11 from \$407 in FY 1986 to \$418 in FY 1987 is the result of inflation applied to the transportation rate.

Subtotal 1,072 2,144 \$721 1,072 \$652 1,072 2,144 \$668

Reserve Personnel, Marine Corps
Special Training (Continued)

RECRUITMENT AND RETENTION (Non-Prior Service): These tours provide for the ordering of reservists to active duty for up to a maximum of 139 days to augment the Regular Recruitment Service for purposes of recruiting non-prior service individual for the Selected Marine Corps Reserve. It also allows individual members with definitive skills to visit schools, and non-prior service personnel at home and public functions to discuss advantages and benefits inherent in the Marine Reserve mission.

(Amounts in Thousands)

	FY 1985			FY 1986			FY 1987		
	Par- tici- pants	Tour Lngth (Avg)	Man- Rate (Avg) Amount	Par- tici- pants	Tour Lngth (Avg)	Man- Rate (Avg) Amount	Par- tici- pants	Tour Lngth (Avg)	Man- Rate (Avg) Amount
Enlisted	361	139	50,179 \$59.53 \$2,987	419	121	50,726 \$61.60 \$3,125	384	121	46,464 \$62.26 \$ 2,893
<u>Change from FY 1986 to FY 1987:</u> The decrease of \$232 from \$3,125 in FY 1986 to \$2,893 in FY 1987 is the result of a decrease of 4,262 mandays created by a decrease of 35 participants.									
Subtotal	361		50,179 2,987	419		50,726 3,125	384		46,464 2,893
Total									
Officers	2,411		35,955 \$ 7,586	2,274		30,828 \$ 6,560	2,382		34,868 \$ 7,365
Enlisted	5,410		101,461 9,840	5,048		95,387 8,997	5,216		94,170 9,168
	7,821		137,416 \$17,426	7,322		126,215 \$15,557	7,598		129,038 \$16,533

(In Thousands of Dollars)

Actual	Estimate	Estimate
Fiscal Year 1985	Fiscal Year 1986	Fiscal Year 1987
\$36,020	\$48,163	\$57,939

Appropriation: Reserve Personnel, Marine Corps
Budget Program 2: Other Training and Support
Budget Activity 2T: Administration and Support

Part I - Purpose and Scope

The funds requested in this project are to provide for pay and allowances, uniform allowances, subsistence and permanent change of station travel costs of Marine Corps Reserve officers and enlisted personnel serving on active duty as authorized by Sections 265, 672(d), 678, of Title 10, United States Code.

Also included in this estimate are funds for the payment of death gratuities, disability and hospitalization benefits to all officers and enlisted personnel undergoing paid training duty, the costs associated with the Reserve Enlistment/Reenlistment Bonus, Education Assistance Program, Selected Marine Corps Reserve Affiliation Bonus Program, and the Individual Ready Reserve Bonus.

RESERVE COMPONENT PERSONNEL ON EXTENDED TOURS OF ACTIVE DUTY

Section 265. Policies and Regulation: Participation of Reserve Officers in Preparation and Administration

"Within such number and in such grades and assignments as the Secretary concerned may prescribe, each armed force shall have officers of its reserve components on active duty (other than for training) at the seat of government, and at headquarters responsible for reserve affairs, to participate in preparing and administering the policies and regulations affecting those reserve components. While so serving, such an officer is an additional member of any staff with which he is serving."

Section 672D/678 (a) (b). Reserve: For Organizing, Administering, etc., Reserve Components.

(a) A Reserve ordered to active duty under section 672(d) of this title in connection with organizing, administering, recruiting, instructing, or training the reserve components shall be ordered in his reserve grade. While so serving, he continues to be eligible for promotion as a Reserve, if he is otherwise qualified.

(b) To assure that a Reserve on duty under subsection (a) receives periodic refresher training in the categories for which he is qualified, the Secretary concerned may detail him to duty with any armed force, or otherwise as the Secretary sees fit.

	<u>Begin</u>	<u>FY 1985 Estimate</u>	<u>FY 1986 Estimate</u>	<u>FY 1987 Estimate</u>
		<u>Average</u>	<u>Average</u>	<u>Average</u>
	<u>End</u>	<u>End</u>	<u>End</u>	<u>End</u>
<u>Officers</u>				
Sect. 265: Administration	36	36	36	36
<u>Sect. 672D/678:</u>				
Organization	53	68	88	100
Administration	57	54	59	70
Recruiting	14	16	19	22
Instruction or Training	11	15	21	34
Officers Total	171	189	223	262
<u>Enlisted</u>				
Sect. 672D/678				
Organization	195	275	377	469
Administration	108	120	140	237
Recruiters	212	187	207	215
Instruction or Training	117	189	307	399
Enlisted Total	632	773	1,031	1,320
				1,492

SCHEDULE OF INCREASES AND DECREASES
(In Thousands of Dollars)
Administration and Support

AMOUNT
\$48,163

FY 1986 DIRECT PROGRAM

Increases:

Full Time Support (FTS) Officer Pay and Allowances ----- 2,483

The increase is the result of an increase in average strength of 39 officers. The majority of the FTS strength increase is for support of the Fourth Marine Aircraft Wing (4th MAW), for standup of an Aerial Refueler/Transport Squadron, the Adversary Aircraft (KPIR) Squadron, and for training support personnel deficiencies in other aircraft squadrons. Additional Full Time Support personnel are requested to support standup of the LAV companies, and the TOW platoons, FSSG Maintenance Units and Headquarters Management Personnel.

Full Time Support (FTS) Enlisted Pay and Allowances ----- 8,313

The increase is the result of an increase in average strength of 289 enlisted. The majority of the FTS strength increase is for support of the Fourth Marine Aircraft Wing (4th MAW), for standup of an Aerial Refueler/Transport Squadron, the Adversary Aircraft (KPIR) Squadron, and for training support personnel deficiencies in other aircraft squadrons. Additional Full Time Support personnel are requested to support standup of the LAV companies, and the TOW platoons, FSSG Maintenance Units and Headquarters Management Personnel.

FTS PCS Travel ----- 102

The increase is the result of an increase in new contracts awarded, increased location transfers for existing contracts, personnel released from active duty and the inflation rate increase.

Clothing ----- 12

The increase is attributed to the increase of 289 average enlisted personnel.

Total Increases:

10,910

Decreases:

Incentive Bonuses ----- -1,134

The decrease is basically the result of a reduction of anniversary payments.

Total Decreases:

-1,134

FY 1987 DIRECT PROGRAM

\$57,939

Pay and Allowances, Officers: These funds are requested to provide for pay and allowances for officers serving on active duty as authorized by section 265, 672D/678 of title 10 U.S.C. The rate used in computing these requirements includes basic pay, retired pay accrual, government's contribution for social security, subsistence, and quarters allowance, and special and incentive pays, as authorized.

(Amounts in Thousands)									
	FY 1985		FY 1986		FY 1987				
	Number	Rate	Number	Rate	Number	Rate			
Officers	189	\$56,455.50	\$10,668	223	\$59,644.55	\$13,301	262	\$60,245.14	\$15,784

Change from FY 1986 to FY 1987: The increase of \$2,483 from \$13,301 in FY 1986 to \$15,784 in FY 1987 is due to an average strength increase of 39 officers. The majority of the FTS strength increase is for support of the Fourth Marine Aircraft Wing (4th MAW), for standup of an Aerial Refueler/Transport Squadron, the Adversary Aircraft (KFIR) Squadron, and for training support personnel deficiencies in other aircraft squadrons. Additional FTS personnel are requested to support standup of the LAV companies, and the TOW platoons, FSSG maintenance units and Headquarters Management Personnel.

Pay and Allowances, Enlisted: These funds are requested to provide for pay and allowances for enlisted personnel serving on active duty as authorized by Section 672D/678 of Title 10 U.S.C. The rate used in computing these requirements includes basic pay, retired pay accrual, government's contribution for social security, subsistence, quarters allowances, clothing maintenance allowance, and special and incentive pay, as authorized.

(Amounts in Thousands)									
	FY 1985		FY 1986		FY 1987				
	Number	Rate	Number	Rate	Number	Rate			
Enlisted	773	\$26,805.79	\$20,721	1,031	\$28,263.85	\$29,140	1,320	\$28,373.40	\$37,453

Change from FY 1986 to FY 1987: An increase of \$8,313 from \$29,140 in FY 1986 to \$37,453 in FY 1987 is due to an average strength increase of 289 enlisted personnel. The majority of the FTS strength increase is for support of the Fourth Marine Aircraft Wing (4th MAW), for standup of an Aerial Refueler/Transport Squadron, the Adversary Aircraft (KFIR) Squadron, and for training support personnel deficiencies in other aircraft squadrons. Additional FTS personnel are requested to support standup of the LAV companies, and the TOW platoons, FSSG maintenance units and Headquarters Management Personnel.

Permanent Change of Station Travel: These funds are requested to provide travel costs for those members making a permanent change of station. In addition, military member travel costs include movement and storage of household goods, dislocation allowance, and dependent travel.

(Amounts in Thousands)

	FY 1985		FY 1986		FY 1987	
	Number	Rate	Number	Rate	Number	Rate
Officers	50	\$1,815.79	75	\$1,895.68	90	\$1,975.30
Enlisted	300	949.44	350	991.22	400	1,032.85
Total	350	\$376	375	\$489	490	\$591

Change from FY 1986 to FY 1987: The increase of \$102 from \$489 in FY 1986 to \$591 in FY 1987 is due to the increase of 15 officers and 50 enlisted personnel making PCS moves resulting from the increase in new contracts awarded to individuals requiring moves, people ending contracts which require a move, and location transfers for existing contracts. In addition, there is a inflation rate increase.

Individual Clothing, Enlisted: The funds requested will provide for a supplementary clothing allowance for personnel assigned to recruiting.

	FY 1985		FY 1986		FY 1987	
	Number	Rate	Number	Rate	Number	Rate
Enlisted	77	\$ 409.22	107	\$ 386.53	138	\$ 386.93

Change from FY 1986 to FY 1987: The increase of \$12 from \$41 in FY 1986 to \$53 in FY 1987 is the result of an increase of entitled recipients, which are a result of the increase in average strength.

Death Gratuities and Disability and Hospitalization Benefits: Death gratuities are provided to beneficiaries of deceased military personnel. Death gratuities are composed of six months basic pay and incentive and special pay if authorized, the sum of which is not to exceed \$3,000. Members of the Reserve Component who suffer injury or disability or contract disease in line of duty, active or inactive, are entitled to hospitalization and pay and allowances during such hospitalization.

(Amounts in Thousands)

	FY 1985		FY 1986		FY 1987	
	Number	Rate	Number	Rate	Number	Rate
Officers	38	\$2,947.37	32	\$3,000.00	32	\$3,000.00
Enlisted	263	2,996.20	294	3,000.00	294	3,000.00
Total		788 \$900		882 \$ 978		882 \$978

Reserve Incentives - Enlisted: The funds requested are to provide for the payment of an Enlistment Bonus, Reenlistment Bonus, SMCR Affiliation Bonus, Educational Assistance and the Individual Ready Reserve Bonus to selected enlisted members.

Enlistment Bonus: An incentive for enlistment for individuals who enlist for 6 years in the SMCR for a critical skill (MOS) or designated unit. The individual must be: non-prior service, graduate of secondary school or expected to graduate, and not applying for active duty with the regular establishment, in order to qualify. The individual may receive a bonus of \$1,000 upon completion of Initial Active Duty for Training (IADT); to include follow-on qualification; \$250 upon satisfactory completion of the 2nd and 3rd anniversary years; and \$500 upon satisfactory completion of the 4th anniversary year.

(Amounts in Thousands)

	FY 1985		FY 1986		FY 1987	
	Number	Rate Amount	Number	Rate Amount	Number	Rate Amount
<u>New Payments</u>						
Enlistment Bonus	100	\$1,000.00 \$ 100	103	\$1,000.00 \$ 103	160	\$1,000.00 \$ 160
<u>Anniversary Payments</u>						
Enlistment Bonus	446	\$ 280.00 \$ 125	512	\$ 350.00 \$ 179	479	\$ 333.00 \$ 160
Subtotal		\$ 225		\$ 282		\$ 320

Change from FY 1986 to FY 1987: An increase of \$38 from \$282 in FY 1986 to \$320 in FY 1987 is a result of an increase in the number of anniversary payments created prior to the current level program.

ENLISTMENT BONUS

	FY 1985	FY 1986	FY 1987	FY 1988	FY 1989	FY 1990	FY 1991
	NUMBER	AMOUNT	NUMBER	AMOUNT	NUMBER	AMOUNT	AMOUNT

PRIOR OBLIGATIONS	446	\$124,800	352	\$139,250	159	\$79,500	
-------------------	-----	-----------	-----	-----------	-----	----------	--

PRIOR YEAR INITIAL AND SUBSEQUENT ANNIVERSARY PAYMENTS	100	\$100,000	160	\$40,000	160	\$40,000	\$80,000
--	-----	-----------	-----	----------	-----	----------	----------

CURRENT YEAR INITIAL AND SUBSEQUENT ANNIVERSARY PAYMENTS	103	\$103,000	160	\$40,000	160	\$40,000	\$80,000
--	-----	-----------	-----	----------	-----	----------	----------

BUDGET YEAR INITIAL AND SUBSEQUENT ANNIVERSARY PAYMENTS	160	\$160,000	160	\$40,000	160	\$40,000	\$80,000
---	-----	-----------	-----	----------	-----	----------	----------

TOTAL INITIAL AND SUBSEQUENT ANNIVERSARY PAYMENTS	546	\$224,800	639	\$319,500	480	\$160,000	160	\$80,000	0	\$0
---	-----	-----------	-----	-----------	-----	-----------	-----	----------	---	-----

Reenlistment Bonus: An incentive for individuals who reenlist in the Marine Corps Reserve for a period of 3 or 6 years may receive a bonus of \$1,250 or \$2,500 respectively. The bonus may be awarded to a person who is reenlisting/extending in a unit or an MOS as published annually by a Marine Corps directive; has not previously received a reenlistment/extension bonus for service in the Selected Reserve; is not reenlisting/extending to qualify for a civilian position where membership in the Reserve is a condition of employment (persons on temporary assignment excluded); and holds rank/grade commensurate with the billet vacancy; and has been a satisfactory participant in the Selected Reserve for 3 months at time of reenlistment/extension.

(Amounts in Thousands)

	FY 1985		FY 1986		FY 1987	
	Number	Rate	Number	Rate	Number	Rate
<u>New Payments</u>						
Reenlistment Bonus	745	\$758.39	545	\$757.80	545	\$757.80
<u>Anniversary Payments</u>						
Reenlistment Bonus	2,799	150.00	2,386	150.00	2,029	150.00
Subtotal		\$985		\$771		\$717

Change from FY 1986 to FY 1987: A decrease of \$54 from \$771 in FY 1986 to \$717 in FY 1987 is a result of a decrease in anniversary payments for reenlistment bonuses.

REENLISTMENT BONUS

	FY 1985		FY 1986		FY 1987		FY 1988		FY 1989		FY 1990		FY 1991	
	NUMBER	AMOUNT	NUMBER	AMOUNT	NUMBER	AMOUNT	NUMBER	AMOUNT	NUMBER	AMOUNT	NUMBER	AMOUNT	NUMBER	AMOUNT
PRIOR OBLIGATIONS	2799	\$419,500	1841	\$276,150	939	\$140,850	694	\$104,100	312	\$46,800				
PRIOR YEAR INITIAL AND SUBSEQUENT ANNIVERSARY PAYMENTS	745	\$565,000	545	\$81,750	545	\$81,750	545	\$81,750	515	\$77,250	515	\$77,250	515	\$77,250
CURRENT YEAR INITIAL AND SUBSEQUENT ANNIVERSARY PAYMENTS	545	\$413,001	545	\$81,750	545	\$81,750	545	\$81,750	545	\$81,750	545	\$81,750	515	\$77,250
BUDGET YEAR INITIAL AND SUBSEQUENT ANNIVERSARY PAYMENTS					545	\$413,001	545	\$81,750	545	\$81,750	545	\$81,750	515	\$77,250
TOTAL INITIAL AND SUBSEQUENT ANNIVERSARY PAYMENTS	3544	\$984,500	2931	\$770,901	2574	\$717,351	2329	\$349,350	1917	\$287,550	1575	\$236,250	1030	\$154,500

EDUCATION ASSISTANCE

	FY 1985	FY 1986	FY 1987	FY 1988	FY 1989	FY 1990	FY 1991
	NUMBER	AMOUNT	NUMBER	AMOUNT	NUMBER	AMOUNT	NUMBER
		AMOUNT		AMOUNT		AMOUNT	AMOUNT

PRIOR OBLIGATIONS 1499 \$1,499,000 1420 \$1,420,000 633 \$633,000

PRIOR YEAR INITIAL AND
SUBSEQUENT ANNIVERSARY
PAYMENTS

991 \$330,003 991 \$991,000 660 \$660,000 336 \$336,000

CURRENT YEAR INITIAL AND
SUBSEQUENT ANNIVERSARY
PAYMENTS

BUDGET YEAR INITIAL AND
SUBSEQUENT ANNIVERSARY
PAYMENTS

TOTAL INITIAL AND
SUBSEQUENT ANNIVERSARY
PAYMENTS

2490 \$1,829,003 2411 \$2,411,000 1293 \$1,293,000 336 \$336,000 0 \$0 0 \$0 0 \$0

SMCR Affiliation Bonus: An incentive for any enlisted person who is serving or has served on active duty for any period of time and has been discharged or released from such active duty under honorable conditions, and affiliates with a SMCR unit, and has a reserve service obligation under Section 651 of Title 10 or under Section 6(d)(1) of the Military Selective Service Act. This program pays a bonus equal to \$50 a month for each month of obligated service that a former active duty Marine agrees to affiliate with a unit. Marines must affiliate for a designated skill or unit to qualify for this bonus and must sign a Ready Reserve agreement for the period of months remaining on their military service obligation.

(Amount in Thousands)

	FY 1985		FY 1986		FY 1987	
	Number	Rate	Number	Rate	Number	Rate
<u>New Payments</u>						
SMCR Affiliation Bonus	359	\$440.00	454	\$440.00	454	\$440.00
<u>Anniversary Payments</u>						
SMCR Affiliation Bonus	8	160.00	-	-	-	-
Subtotal		\$159		\$200		\$200

AFFILIATION BONUS

	FY 1985	FY 1986	FY 1987	FY 1988	FY 1989	FY 1990	FY 1991
	NUMBER	NUMBER	NUMBER	NUMBER	NUMBER	NUMBER	NUMBER
	AMOUNT	AMOUNT	AMOUNT	AMOUNT	AMOUNT	AMOUNT	AMOUNT
PRIOR OBLIGATIONS	8						
	\$1,280						
PRIOR YEAR INITIAL AND SUBSEQUENT ANNIVERSARY PAYMENTS	359						
	\$157,920						
CURRENT YEAR INITIAL AND SUBSEQUENT ANNIVERSARY PAYMENTS		454					
		\$200,000					
BUDGET YEAR INITIAL AND SUBSEQUENT ANNIVERSARY PAYMENTS			454				
			\$200,000				
TOTAL INITIAL AND SUBSEQUENT ANNIVERSARY PAYMENTS	367	454	454	0	0	0	0
	\$159,200	\$200,000	\$200,000	\$0	\$0	\$0	\$0

Individual Ready Reserve (IRR) Bonus: An incentive to retain pre-trained, prior service, critically skilled personnel in the IRR. This bonus provides a lump sum payment of \$750 to quality Marines upon reenlistment in the IRR for 3 years.

(Amounts in Thousands)

	FY 1985		FY 1986		FY 1987	
	Number	Rate	Number	Rate	Number	Rate
IRR Bonus	208	\$600	917	\$600	917	\$600
		\$125		\$550		\$550

Appropriation: Reserve Personnel, Marine Corps
Budget Program 2: Other Training and Support
Budget Activity 20: Education Benefits

	Actual	Estimate	Estimate
	Fiscal Year 1985	Fiscal Year 1986	Fiscal Year 1987
	\$3,259	\$5,770	\$5,000

Part I - Purpose and Scope

Funds are for the payment to the Department of Defense Education Benefits Fund, a trust fund. The program is governed by Title 10 U.S.C., Chapter 106. This program will fund educational benefit payments in their entirety for eligible individuals in the Selected Reserve. This program is budgeted on an accrual basis. Actual payments to individuals are made by the Veterans Administration from funds transferred from the Trust account.

PART II - JUSTIFICATION OF FUNDS REQUESTED

All individuals enlisting, reenlisting, or extending for not less than six years in the Selected Reserve between July 1, 1985 and June 30, 1988 except those who have received a commission from a Service academy or completed an ROTC scholarship program are eligible to receive educational assistance unless they are entitled for assistance under Chapter 30 of Title 38 U.S.C.. The individuals must also meet initial training and high school diploma or equivalency requirements. Cost estimates are actuarially based and reflect eligibility estimates adjusted by an estimate of ultimate benefit utilization and partially offset by an estimate of interest earned on investments of the Education Benefits Fund. The program will provide for funds adequate to allow for one of three levels of assistance. These levels are \$140.00 per month for full-time educational pursuit, \$105.00 for three quarter time pursuit and \$70.00 for half time pursuit. The maximum total benefit that can be paid is \$5,040.

SCHEDULE OF INCREASES AND DECREASES
(In Thousands of Dollars)
Educational Benefits

	AMOUNT
FY 1986 DIRECT PROGRAM	\$5,770
Total Increases:	-0-
Decreases:	
<u>Educational Benefits</u> -----	-770
<p>- The decrease of \$770 from \$5,770 in FY 1986 to \$5,000 in FY 1987 is the result of a decrease in the number of funded eligible participants, coupled with a reduction in the approved Per Capita Normal Cost.</p>	
Total Decreases:	-770
FY 1987 DIRECT PROGRAM	\$5,000

The following table displays the actuarially based estimates:

(Amounts in Thousands)

Type of Educational Pursuit	FY 1985		FY 1986		FY 1987	
	No. Eligible	Rate	No. Eligible	Rate	No. Eligible	Rate
G.I. Bill Total	2,003	\$1,627	9,148	\$630	8,700	\$575
		\$3,259		\$5,770		\$5,000

Change from FY 1986 to FY 1987: The decrease of \$770 from \$5,770 in FY 1986 to \$5,000 in FY 1987 is the result of a decrease in the estimated Per Capita Normal cost in the amount of \$55.00/eligible reservist, coupled with a decrease of 448 eligible reservists.

AD-A166 525

DEPARTMENT OF THE NAVY JUSTIFICATION OF ESTIMATES FOR
FISCAL YEAR 1987 SU. (U) OFFICE OF THE COMPTROLLER
(NAVY) WASHINGTON DC FEB 86

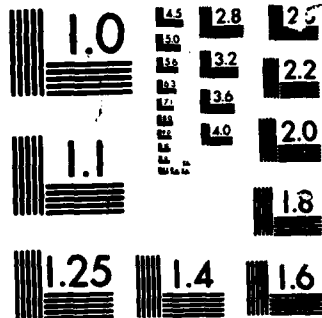
2/2

UNCLASSIFIED

F/G 3/1

NL





MICROCOPY

CHART

(In Thousands of Dollars)

Actual	Estimate	Estimate
Fiscal Year 1985	Fiscal Year 1986	Fiscal Year 1987
\$6,122	\$6,030	\$6,196

Appropriation: Reserve Personnel, Marine Corps
Budget Program 2: Other Training and Support
Budget Activity 2C: Platoon Leaders Class

Part I - Purpose and Scope

Provides for pay, subsistence, travel, and clothing for the Platoon Leaders Class (PLC) and the Woman Officers Candidate Class. These personnel attend two periods of summer training and upon completion of training and graduation from college are commissioned in the Marine Corps Reserve and assigned to active duty for three years. Pay and subsistence rates are based on the actual number of days trainees are on board during the applicable fiscal year. Travel, and clothing costs are based on the number of students entering training during the applicable fiscal year. Funds to cover PLC subsidy authorized by Public Law 92-172 are included in the amount of \$1,080 for FY 1987. This category also provides for clothing for Naval ROTC students, under the Marine Option program, who receive a clothing issue while attending their single period of Marine Corps summer training - Officer Candidates' School (OCS). Pay and subsistence for these personnel is not included in this category because as Naval ROTC students, they are paid with Navy funds.

PLATOON LEADERS CLASS
 SCHEDULE OF INCREASES AND DECREASES
 (In Thousands of Dollars)

AMOUNT
 \$ 6,030

FY 1986 DIRECT PROGRAM

Increases:	
<u>Subsistence Allowance:</u>	----- 135
The increase is the result of 150 additional students enrolling in the program.	
<u>Pay and Allowance:</u>	----- 1
The increase is the result of an increase in the FICA rate.	
<u>Enlisted Subsistence:</u>	----- 3
The increase is the result of the increase in the approved subsistence rates.	
<u>Travel:</u>	----- 27

The increase is the result of inflation applied to the transportation portion of the travel rate.

Total Increases: 166
 Total Decreases: -0-

FY 1987 DIRECT PROGRAM

\$ 6,196

Subsistence Allowance: The funds requested are to provide an allowance of \$100 per month for students enrolled in Reserve Officer Candidate III and IV courses in accordance with the provisions of 37 U.S.C. 209.

(Amounts in Thousands)

FY 1985			FY 1986			FY 1987		
Average Number of Students	Rate	Amount	Average Number of Students	Rate	Amount	Average Number of Students	Rate	Amount
1,014	\$900.00	\$ 913	1,050	\$900.00	\$ 945	1,200	\$900.00	\$1,080

Change from FY 1986 to FY 1987: The increase of \$135 from \$945 in FY 1986 to \$1,080 in FY 1987 is the result of 150 additional students enrolling in the program.

Uniforms Issue-in-kind: The funds requested are to provide uniform issues, including replacement items.

(Amounts in Thousands)

FY 1985			FY 1986			FY 1987		
Number	Rate	Amount	Number	Rate	Amount	Number	Rate	Amount
PLC/MOCC 1,989	\$193.95	\$386	1,952	\$184.86	\$361	1,952	\$184.86	\$361
NROTC 413	309.18	128	445	291.55	130	445	291.55	130
TOTAL		\$514			\$491			\$491

Pay and Allowances: The funds requested are to provide pay and allowances to students attending summer training. The students are entitled to pay at the rate prescribed for an E-5.

(Amounts in Thousands)

FY 1985			FY 1986			FY 1987					
Number	Mandays	Rate	Number	Mandays	Rate	Number	Mandays	Rate			
1,786	79,718	\$46.71	\$3,724	1,689	75,389	\$48.17	\$3,631	1,689	75,389	\$48.18	\$3,632

Change from FY 1986 to FY 1987: The increase of \$1 from \$3,631 in FY 1986 to \$3,632 in FY 1987 is the result of an increase in the FICA rate.

Subsistence of PLC's: These funds are requested to provide subsistence allowances for members in summer camp training programs. The mandays totals includes a 15% absentee rate.

(Amounts in Thousands)

FY 1985		FY 1986		FY 1987	
Mandays	Rate	Mandays	Rate	Mandays	Rate
64,572	\$ 3.80	64,081	\$ 3.65	64,081	\$ 3.70
	Amount		Amount		Amount
	\$ 245		\$ 234		\$ 237

Change from FY 1986 to FY 1987: The increase of \$3 from \$234 in FY 1986 to \$237 in FY 1987 is due to an increase in the approved rates.

Travel of PLC's: The funds requested are to provide for travel and per diem of members to and from summer camp training.

(Amounts in Thousands)

FY 1985		FY 1986		FY 1987	
Number	Rate	Number	Rate	Number	Rate
1,989	\$364.83	1,952	\$373.46	1,952	\$387.05
	Amount		Amount		Amount
	\$ 726		\$ 729		\$ 756

Change from FY 1986 to FY 1987: The increase of \$27 from \$729 in FY 1986 to \$756 in FY 1987 is the result of inflation applied to the transportation portion of the travel rate.

Appropriation: Reserve Personnel, Marine Corps
Budget Program 2: Other Training and Support
Budget Activity 2G: Junior ROTC

(In Thousands of Dollars)

Actual	Estimate	Estimate
Fiscal Year 1985	Fiscal Year 1986	Fiscal Year 1987
\$1,367	\$1,512	\$1,618

Part I - Purpose and Scope

This program provides for the initial issue of uniforms for 547 new students who will be trained in the units of the Junior Marine Corps Reserve Training Corps during FY 1987.

Replacement issue of clothing for students in the 80 established units through FY 1987 is also provided.

SCHEDULE OF INCREASES AND DECREASES
(In Thousand of Dollars)

Junior ROTC

AMOUNT
\$1,512

FY 1986 DIRECT PROGRAM

Increases:

Uniforms, Issue-in-Kind ----- 106

- The increases are due to increases in starting enrollments.

Total Increases:

106

Total Decreases:

-0-

FY 1987 DIRECT PROGRAM

\$1,618

Reserve Personnel, Marine Corps
Junior ROTC (Continued)

Part II - Justification of Funds Requested

The following is a comparison by fiscal years of the program data and costs included in this estimate:

	(In Thousands of Dollars)		
	<u>FY 1985 (Estimate)</u>	<u>FY 1986 (Estimate)</u>	<u>FY 1987 (Estimate)</u>
Average Student Enrollment	8,660	10,767	11,278
Uniforms, Issue-in-Kind	\$1,367	\$1,512	\$1,618

2C(1) Uniforms, Issue-in-Kind: During FY 1987 it is estimated there will be 80 units of the Junior ROTC with an average student enrollment of 141 per unit.

	<u>No. of</u> <u>Uniforms</u>	<u>Rate</u>	<u>Requirement</u>
<u>Initial Issue</u>			
<u>Males</u>	456	\$270.92	\$124
Females	91	308.83	28
<u>Replacement</u>			
<u>Males</u>	10,000	72.50	725
Females	4,000	85.25	341
<u>Alterations</u>			
<u>Males</u>	7,000	34.89	244
Females	3,500	31.94	112
<u>Dress Blues</u>			
<u>Males</u>	198	223.29 (Med. Bag)	44
Total: Junior ROTC -- Direct Program			\$1,618

Reserve Personnel, Marine Corps
Junior ROTC (Continued)

Uniforms, Issue-In-Kind: These funds are required to provide uniforms to members of the Junior ROTC program as required.

(Dollars in Thousands)

	FY 1985		FY 1986		FY 1987	
	Number	Rate	Number	Rate	Number	Rate
Initial Issue	550	\$283.11	685	\$296.05	745	\$297.42
Replacement	8,110	149.38	10,082	129.84	10,533	132.54
Total	8,660	\$1,367	10,767	\$1,512	11,278	\$1,618

Change from FY 1986 to FY 1987: The increase of \$106 in the JROTC program from \$1,512 in FY 1986 to \$1,618 in FY 1987 is due to increases in starting enrollments.

SECTION 5 - SPECIAL ANALYSIS

PLATOON LEADERS CLASS

	FY 1985 Estimate		FY 1986 Estimate		FY 1987 Estimate	
	BEGIN	AVERAGE	BEGIN	AVERAGE	BEGIN	AVERAGE
First Year	1,205	1,070	937	1,352	1,149	945
Second and Subsequent Year	<u>567</u>	<u>523</u>	<u>479</u>	<u>600</u>	<u>540</u>	<u>480</u>
Total Enrollment	1,772	1,593	1,416	1,952	1,689	1,425
Completed Program - Entered on Active Duty			676			600
Completed Program - Active Duty Deferred			<u>40</u>			<u>40</u>
			716			640

END
FILMED

5-86

DTIC