

AD-A186 546

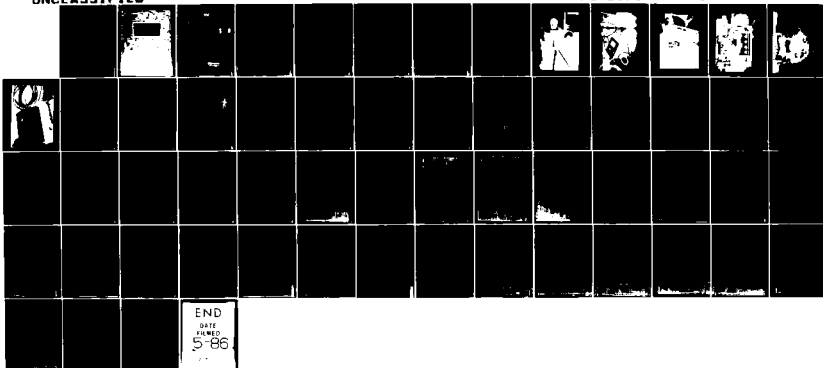
ELECTRO-OPTICAL DEVELOPMENT SYSTEM(U) SCIENCE
APPLICATIONS INTERNATIONAL CORP TUCSON AZ D G CROWE
27 SEP 85 DAAK70-84-C-0034

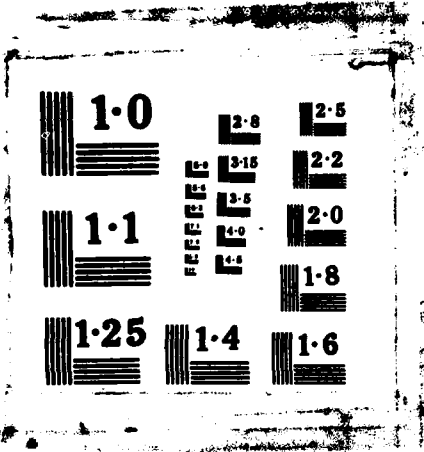
1/1

UNCLASSIFIED

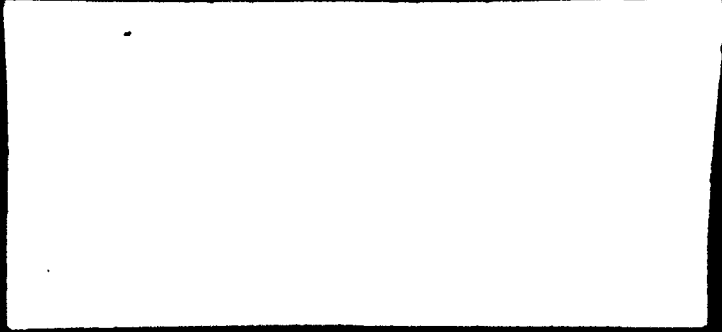
F/G 20/8

NL





AD-A166546



(2)



Science Applications International Corporation

AD-A166 546

ELECTRO-OPTICAL DEVELOPMENT SYSTEM
FINAL REPORT

DTIC
ELECTE
APR 10 1986
S D D

Contract DAAK70-84-C-0034
Period of Performance: 04/16/84 through 09/30/85

Submitted to: Night Vision and Electro-Optical Laboratory
Attention: William Johnson
SPG-SID-DELMY-SD
PERADCON
Ft. Belvoir, VA 22080

Prepared by: David S. Cross
Science Applications International Corp.
1400 E. Broadway, Suite 1100
Tucson, AZ 85711

TABLE OF CONTENTS

<u>PARAGRAPH</u>	<u>TITLE</u>	<u>PAGE</u>
1.0	INTRODUCTION.	1
2.0	LLLTV WIDE-FIELD SMALL-APERTURE SYSTEM.	1
3.0	INTERFACES FOR PORTAL APERTURE IMAGE REFOCUSING (PAIR).	1
4.0	FAST TELEPHOTO LENS	2
5.0	ALTITUDE-AZIMUTH MOUNTS	2
6.0	IMAGING SYSTEM AND HUMAN EYE PERFORMANCE MODELING	10
7.0	DISCUSSION.	10
APPENDICES		
A	MODELING OF SURVEILLANCE SENSORS AND MODELING OF THE HUMAN EYE FOR COVERT NEAR-INFRARED IMAGING.	A1
A.1	SUMMARY	A1
A.2	RADIOMETRIC MODEL	A1
A.3	DATA.	A6
A.4	MODELING RESULTS.	A9
A.5	DISCUSSION.	A15
	REFERENCES.	A16
B	ALTITUDE-AZIMUTH MOUNT DRAWINGS	B1

0003-85-jj1/v

Approved for Release Unannounced Distribution <i>[Signature]</i>	
By _____	
Distribution _____	
Availability Codes	
Dist	Avail and/or Special
<i>AI</i>	

QUALITY INSPECTED
3

LIST OF FIGURES

<u>FIGURE</u>	<u>TITLE</u>	<u>PAGE</u>
1	Fast Telephoto Lens Configurations.	3
2	Prototype Alt.-Azimuth Mount.	4
3	Prototype Proportional Joystick Control	5
4	Prototype Mount With Cover Removed.	6
5	Internal Prototype Mount Electronics.	7
6	Small Operational Mount	8
7	Control Box For Small Mount	9

APPENDICES

A1	Problem Geometry.	A2
A2	Xenon Lamp Spectral Intensity [4]	A7
A3	Schott Glass Filter Transmission [5].	A7
A4	Spectral Response Of The XYBION Camera (ICID-R) Compared To Other Conventional Photocathodes	A8
A5	Spectral Sensitivity Of The Human Eye [1]	A8
A6	Intensified CCD TV Signal-To-Noise Ratio As A Function Of TV Sensor Range And Illuminator Range	A10
A7	Signal-To-Eye-Threshold vs. Range To Illuminator.	A11
A8	TV SNR Excess At The Sensor Over Eye Signal-To-Threshold At The Target For A Sensor Of 75 cm ² Area (3½ inch aperture with central obstruction).	A12
A9	TV SNR Excess At The Sensor Over Eye Signal-To-Threshold At The Target For A Sensor of 300 cm ² Area (7 inch aperture with central obstruction).	A13
A10	TV SNR Excess At The Sensor Over Eye Signal-To-Threshold At The Target For A Sensor Of 675 cm ² Area (11 inch aperture with central obstruction).	A14

1.0 INTRODUCTION

This final report describes the successful delivery of all required items under the contract, as well as additional work not originally anticipated at the time the proposal was written. The relatively long time delay of approximately ten months in contract award meant that customer requirements had evolved since the proposal was prepared. Science Applications International Corporation (SAIC) provided flexible response in order to satisfy evolving requirements, as SAIC has done during previous contracts.

All requested tasks were completed, but not without technical challenges. The sections which follow describe each of these tasks.

2.0 LLLTV WIDE-FIELD SMALL-APERTURE SYSTEM

The original statement of work called for the development of an integrated system utilizing micro-channel plate (MCP) image intensification of a solid-state detector array with C-mount interface to a small diameter cystoscope. This system was delivered utilizing GFE customer components, since the customer had acquired these components during the contracting process. This GFE mode of satisfying the requirement was suggested by the customer in order to free contract resources for other tasks.

3.0 INTERFACES FOR (PORTAL APERTURE IMAGE REFOCUSING) (PAIR)

Five complete PAIR units were built and delivered. This task required devising a sophisticated optical design utilizing nine optical elements, in addition to a unique mechanical housing and coupling mechanism. The entire task was completed within three months due to a pressing customer application. The design details of this device are not included here at customer request.

4.0 FAST TELEPHOTO LENS

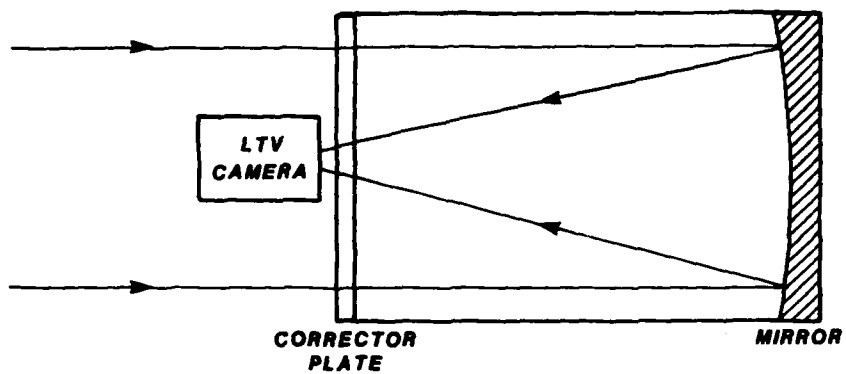
The requirement for a low focal ratio telephoto lens to be used with a low light level television (LLLTV) camera was first addressed by designing a Wright camera configuration (Figure 1A). The fabrication of the corrector plate and mirror was attempted by a private local optical shop specializing in aspheres. The company was unsuccessful in their attempt to fabricate the elements for a fast ($F = 2$) Wright, however, due to the need to manufacture optical elements differing from a spherical surface by about 300 fringes. A different configuration proved necessary.

A successful $F = 1.5$ telephoto lens was fabricated using the Schmidt camera configuration of Figure 1B. This fast focal ratio results in a 78% brightness increase over the Wright design, and an even larger advantage when compared to commercially available optics in the 300 millimeter or longer focal lengths. The one disadvantage of the system is the long tube length which is twice the focal length. Design studies have indicated that good performance would be available over the desired field of view from a shortened Schmidt configuration with total physical length comparable to the focal length, but it was not possible to try this under the present contract.

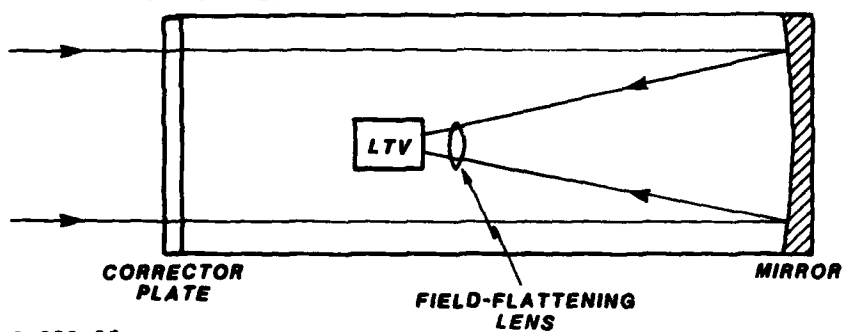
5.0 ALTITUDE-AZIMUTH MOUNTS

Two complete alt.-azimuth mounts were designed, fabricated, and delivered. The first was a prototype which exceeded customer requirements in that it had proportional joystick control with finer motion resolution than needed (Figures 2, 3, 4 and 5). The second version for field use was developed using customer feedback from experience with the prototype. The operational mount (Figures 6 and 7) weighs only about 4.5 pounds compared to 27 pounds for the prototype. This small mount uses a 4 pound control box with simple direction and motion rate controls. Preliminary drawings

A. WRIGHT CAMERA



B. SCHMIDT CAMERA



G-823-85

Figure 1. Fast Telephoto Lens Configurations



Figure 2. Prototype Alt.-Azimuth Mount

000-38-5j1/v

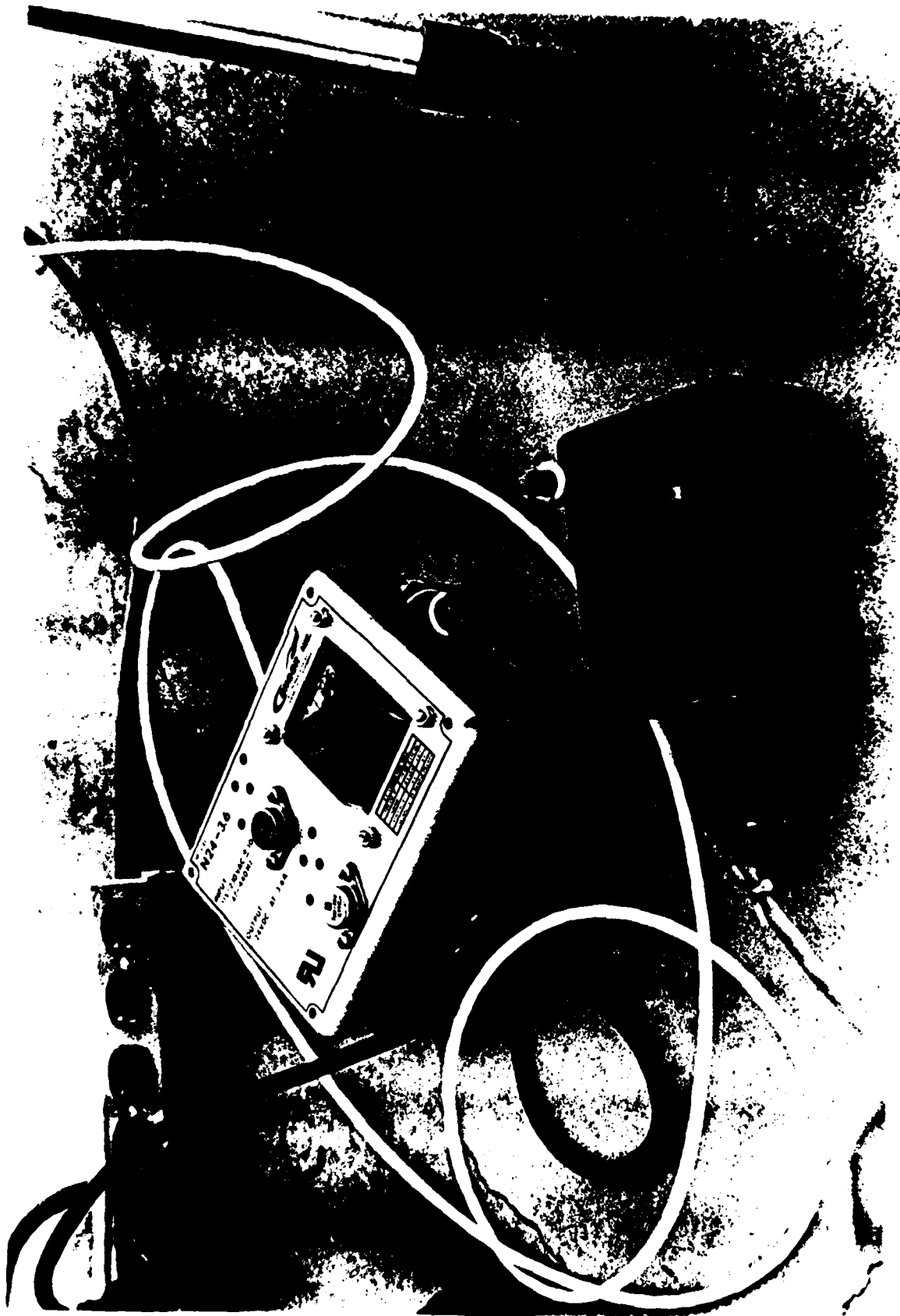


Figure 3. Prototype Proportional Joystick Control

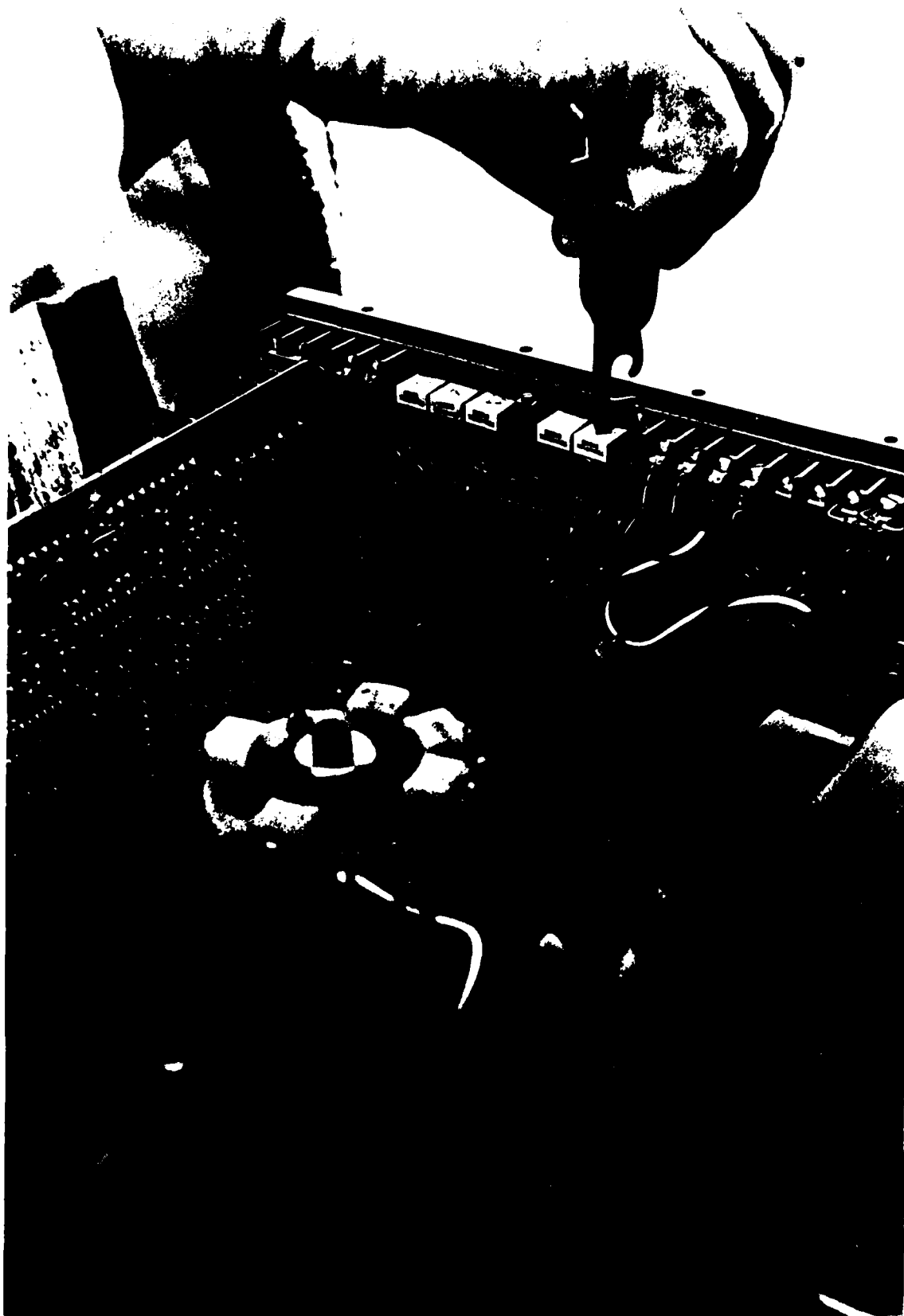


Figure 4. Prototype Mount With Cover Removed

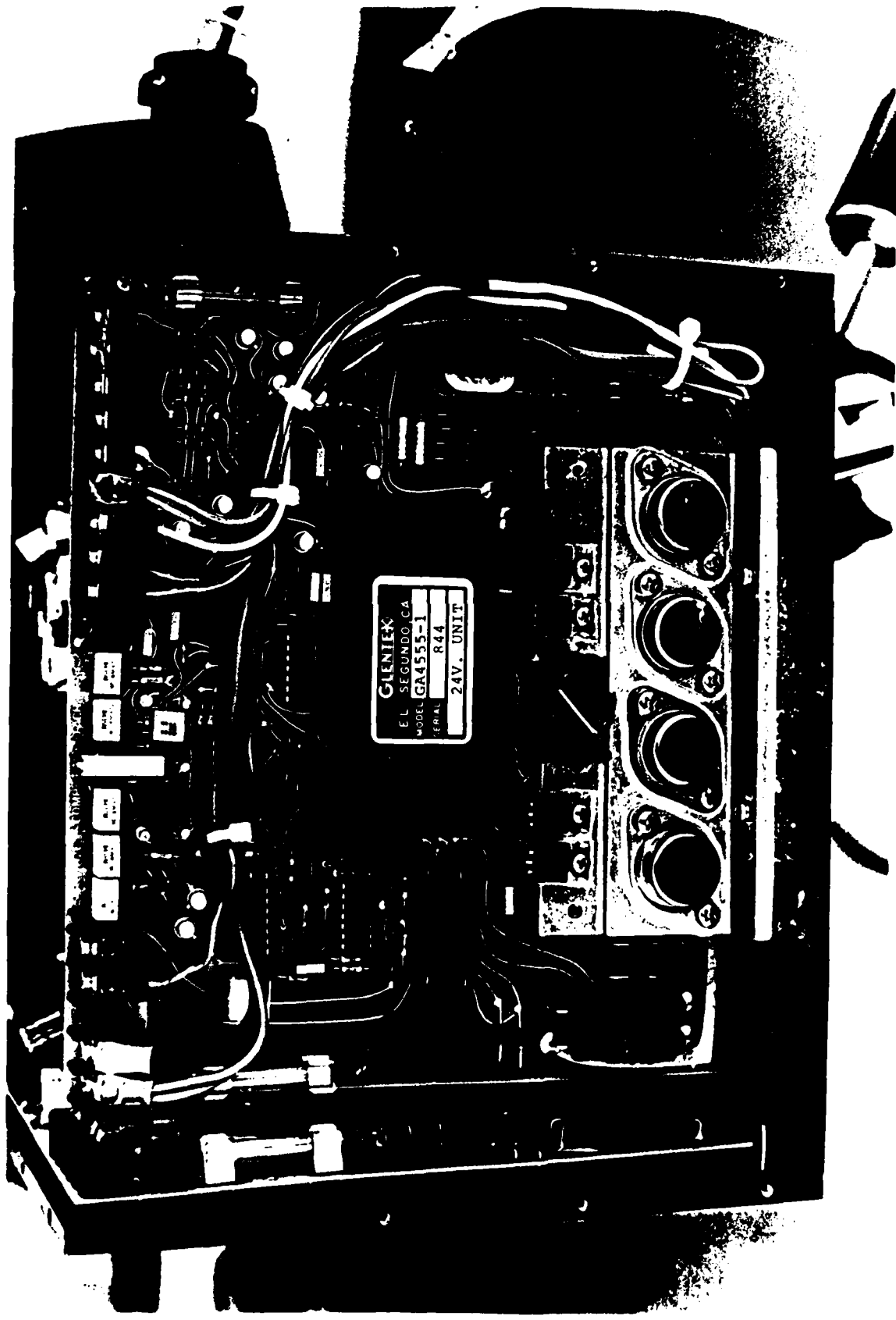


Figure 5. Internal Prototype Mount Electronics

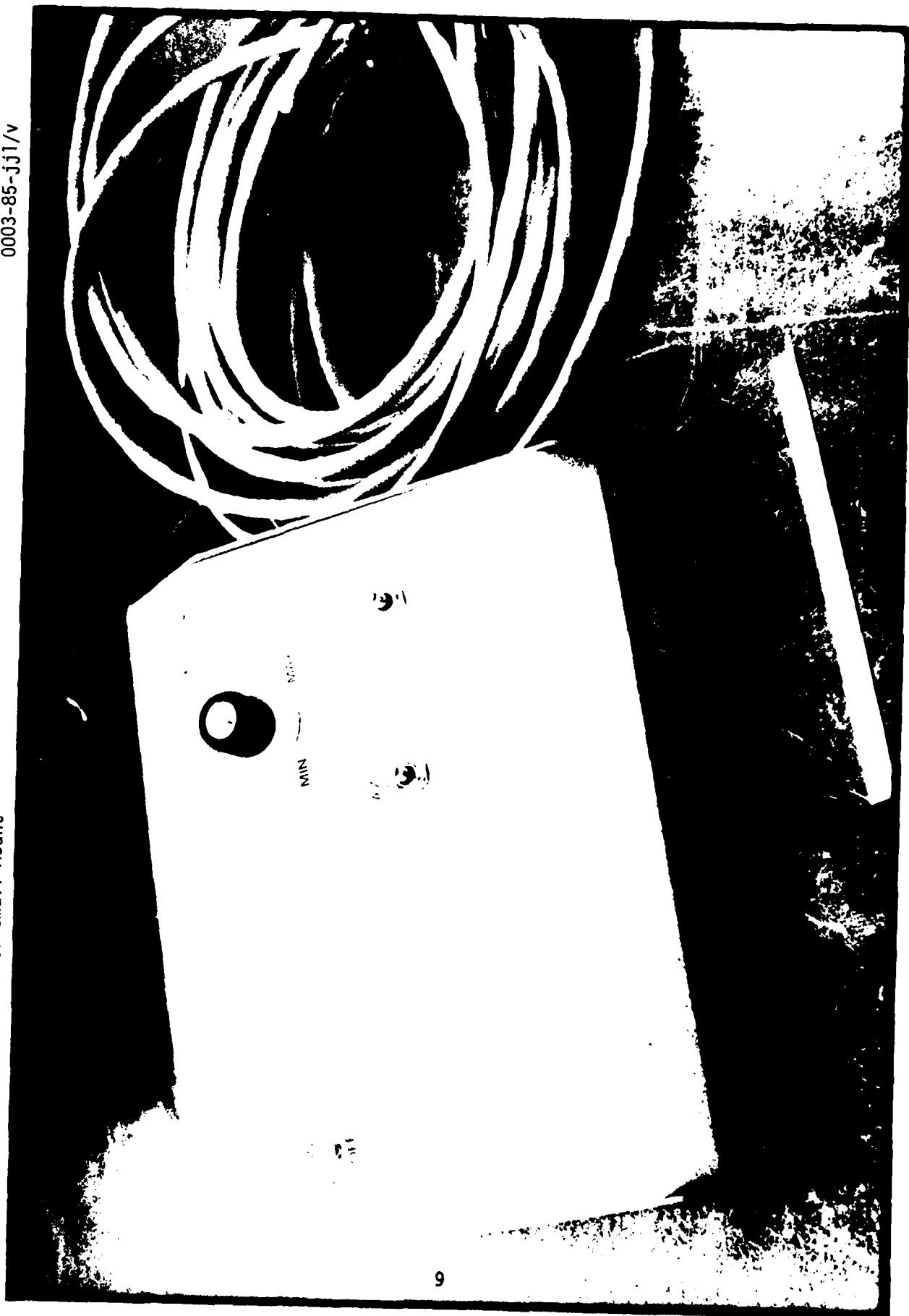


Figure 6. Small Operational Mount

0003-85-jj1/v

0003-85-jj1/v

Figure 7. Control Box For Small Mount



for the small mount are provided in Appendix B.

6.0 IMAGING SYSTEM AND HUMAN EYE PERFORMANCE MODELING

Appendix A details modeling in support of a customer requirement for covert near-infrared imaging.

7.0 DISCUSSION

Responsive support of diverse and evolving customer requirements has been provided including the design, development, and delivery of several new systems. Some of these systems, such as PAIR and the small alt.-azimuth mount are nearly fully developed, while the fast telephoto lens should be refined to reduce its size and decrease scattered light from off-axis sources.

APPENDIX A
MODELING OF SURVEILLANCE SENSORS AND MODELING
OF THE HUMAN EYE FOR COVERT NEAR-INFRARED IMAGING

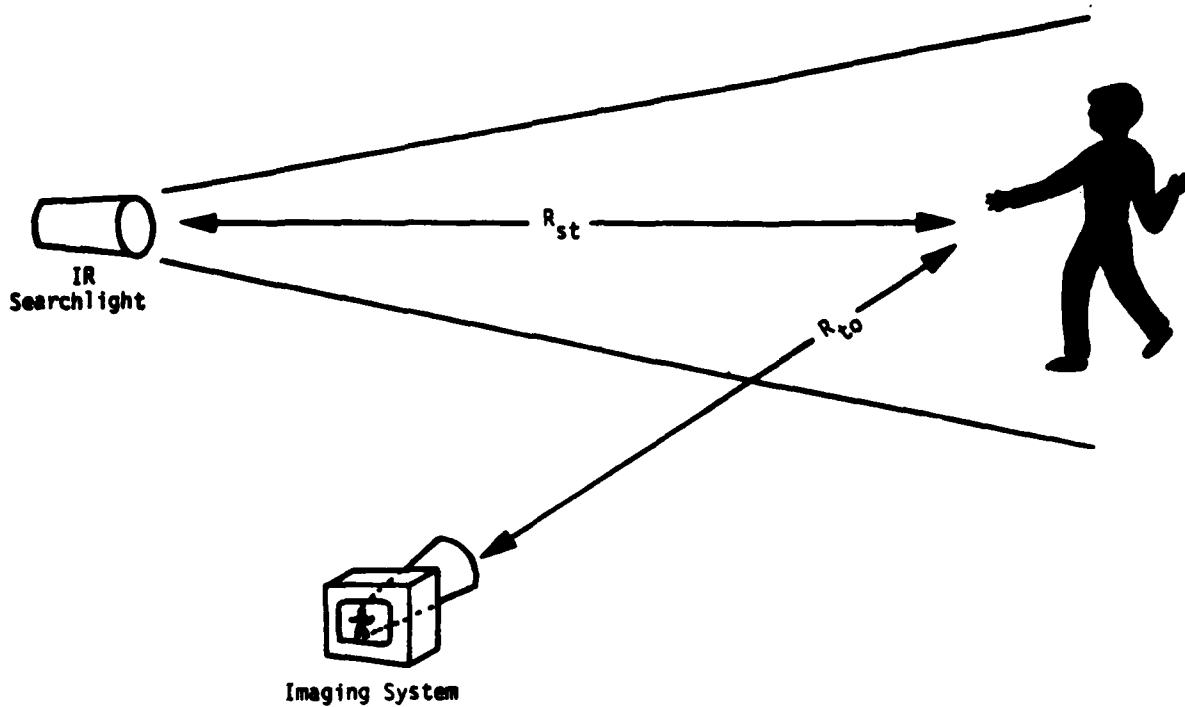
A.1 SUMMARY

It is desired to determine the feasibility of designing an active illuminator/near infrared imager combination which will allow the covert surveillance of humans. The infrared response of the eye extends somewhat further into the red than is often assumed. This eye response to about 1 micrometer wavelength [1] requires more attention to detail in solving the problem than might at first be supposed. An operational illumination system [2] in use for this purpose is in fact easily detected by the eye even though a filter which blocks essentially all of the light shortward of about 800 nanometers is used.

A radiometric model is constructed and exercised to determine if relatively simple modifications to existing equipment can be made which will solve the problem. It has been found that the use of a longer wavelength optical filter only increases the intensified television surveillance system advantage over the eye by about 3dB. The best solution available with the present illuminators is to increase the TV optical aperture area to 675 cm² (the equivalent of about an 11-inch clear aperture optic with central obstruction). This aperture will allow operation to a range of about 200 meters without exceeding the illuminator intensity which is detectable by the eye.

A.2 RADIOMETRIC MODEL

Part of the difficulty in achieving covert illumination arises due to the direct illumination of the human in Figure A1. The eye is looking directly down the collimated searchlight beam, whereas the low light level television (L³TV) must use diffusely reflected indirect illumination. The monochromatic power incident on the eye is:



G-262-85

Figure A1. Problem Geometry

$$\phi_{\text{eye}}(\lambda) = \frac{L_s(\lambda)\tau_f(\lambda)A_s A_{\text{eye}}}{R_{\text{st}}^2} \quad (1)$$

where: $L_s(\lambda)$ is the radiance of the searchlight source,
 $\tau_f(\lambda)$ is the transmissivity of the IR searchlight filter,
 A_s is the source area,
 A_{eye} is the eye aperture area, and
 R_{st} is the searchlight to eye distance.

The power incident on a pixel sized region of the $L^3\text{TV}$ photocathode can be decomposed to clarify the nature of the indirect illumination:

$$\begin{aligned} \phi_{\text{pc}}(\lambda) &= (\text{power incident on a target pixel}) \\ &\times \frac{(\text{target pixel reflectivity})}{(\text{reflectance solid angle})} \\ &\times (\text{solid angle of } L^3\text{TV optics at the target}) \quad (2) \end{aligned}$$

In calculating the power incident on a target pixel, some concern may arise over the highly collimated nature of the searchlight beam. This collimation might be thought to invalidate the apparent R^{-2} dependence which arises in radiative transfer relations similar to Equation (1). It is less likely to include an error in the radiometric model if an expression such as (1) is thought of in terms of geometrical partitioning of the radiant power:

$$\begin{aligned} \phi_{\text{eye}}(\lambda) &= (\text{power emitted by the searchlight}) \\ &\times (\text{fraction of power intercepted by the eye}) \\ &= \phi_s(\lambda) \left(\frac{\Omega_{\text{eye}}}{\Omega_s} \right) = \left(\frac{\phi_s(\lambda)}{\Omega_s} \right) (\Omega_{\text{eye}}) \\ &= \left(L_s(\lambda)\tau_f(\lambda)A_s \right) \left(\frac{A_{\text{eye}}}{R_{\text{st}}^2} \right) \quad (3) \end{aligned}$$

where: Ω_{eye} is the solid angle subtended by the eye at the searchlight, and

Ω_s is the solid angle into which the searchlight emits.

It is assumed here that the searchlight emits uniformly throughout Ω_s to eliminate the necessity of integrating over angular dependence. It is then apparent that as long as

$$\frac{\Omega_{\text{eye}}}{\Omega_s} \leq 1 \quad , \quad (4)$$

the R^{-2} dependence of Equation (3) which arises from the calculation of Ω_{eye} holds. Similarly, Equation (2) may be expressed:

$$\phi_{\text{pc}}(\lambda) = \left(\frac{L_s(\lambda) \tau_f(\lambda) A_s A_t}{R_{st}^2} \right) \left(\frac{\rho_t(\lambda)}{\pi} \right) \left(\frac{A_0}{R_{to}^2} \right) \quad , \quad (5)$$

where: A_t is the target pixel area,

$\rho_t(\lambda)$ is the target pixel reflectivity,

A_0 is the area of the $L^3\text{TV}$ optics,

R_{to} is the target to $L^3\text{TV}$ distance,

and it is assumed that

$$\frac{\Omega_t}{\Omega_s} \leq 1 \quad , \quad (6)$$

with uniform illumination throughout Ω_s .

The signal-to-noise ratio for the eye looking at the searchlight as well as for the $L^3\text{TV}$ detecting the target reflectance signal can now be calculated. The $L^3\text{TV}$ is assumed to be microchannel plate intensified and quantum noise limited in the sense that [3]:

$$\text{SNR}_{L^3\text{TV}} = \sqrt{n \eta_{\text{pc}} F_{\text{MCP}}} \quad , \quad (7)$$

where: n is the number of photons incident on a pixel sized area

of the photocathode,

η_{pc} is the photocathode quantum efficiency, and
 F_{MCP} is the microchannel plate fill factor.

The number of photons is:

$$n = \frac{\lambda \phi_{pc}(\lambda) \Delta t}{hc} \quad , \quad (8)$$

where: Δt is the integration time,

h is Planck's constant (6.63×10^{-34} Jsec),

c is the speed of light, and

$\phi_{pc}(\lambda)$ is given by Equation (5).

The final signal-to-noise expression integrated over the spectral response of the L^3TV is:

$$SNR_{L^3TV} = \left[\Delta t \int_0^{\infty} \frac{\lambda L_s(\lambda) \tau_f(\lambda) A_s A_t A_0 \rho_t(\lambda) \eta_{pc}(\lambda) F_{MCP}}{\pi h c R_{st}^2 R_{to}^2} d\lambda \right]^{1/2} \quad . \quad (9)$$

The signal-to-noise for the eye is taken to be:

$$SNR_{eye} = \left[\int_0^{\infty} \frac{\phi_{eye}(\lambda)}{T_{eye}(\lambda)} d\lambda \right]^{1/2} \quad , \quad (10)$$

where: $T_{eye}(\lambda)$ is the eye threshold.

Therefore,

$$SNR_{eye} = \left[\int_0^{\infty} \frac{L_s(\lambda) \tau_f(\lambda) A_s A_{eye}}{T_{eye}(\lambda) R_{st}^2} d\lambda \right]^{1/2} \quad . \quad (11)$$

While the eye is very much less sensitive than the L^3TV at wavelengths longer than 700 nanometers, the geometric advantage most

clearly seen in the R^{-2} dependence of Equation (11) versus the R^{-4} dependence of Equation (9) indicates some of the difficulty in solving the problem.

A signal-to-noise ratio of little more than 1 may allow eye detection of the searchlight, while the L^3 TV must provide a somewhat higher SNR if identification with a high level of confidence is required. It is reasonable to require that the L^3 TV SNR exceed 6, or $20 \log(6) = 15.6$ dB.

A.3 DATA

The spectral intensity of the xenon searchlight source used in the present operational system will be estimated using Figure A2. The SB-100 searchlight draws 20 amperes at 12 volts, or 240 watts, and is collimated approximately 10x. The figure is measured from an uncollimated 5,000 watt xenon source. Therefore, a scaling factor of 24,000/5,000 will be applied to the vertical axis.

The search light filter is a Schott RG 830 shown in Figure A3. The RG 850 filter can also be modeled.

The photocathode can be modeled with the use of Figure A4 which illustrates the spectral response of the XYBION camera currently in use. A negative electron affinity photocathode device would have increased red response and be more useful for this particular application.

The spectral sensitivity threshold of the human eye is obtained by normalizing Figure A5 to 3×10^{-16} watts at 510 nanometers [1].

Choosing nominal values for the remaining unknowns in Equations (9) and (11):

$$\begin{aligned}\Delta_t &= 1/30 \text{ second (interlaced RS-170)} \\ A_t &= 1 \text{ cm}^2 \text{ (for facial identification)}\end{aligned}$$

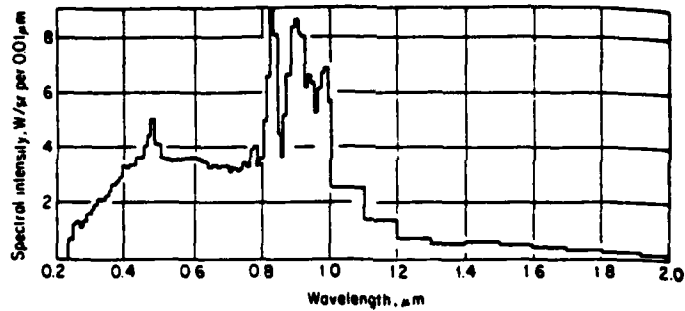


Figure A2. Xenon Lamp Spectral Intensity [4]

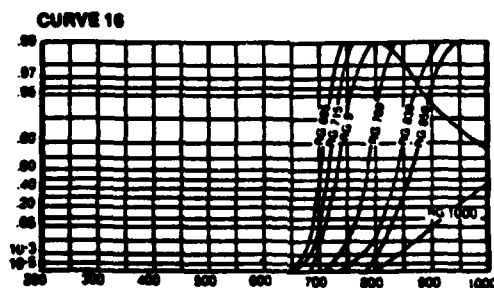


Figure A3. Schott Glass Filter Transmission [5]

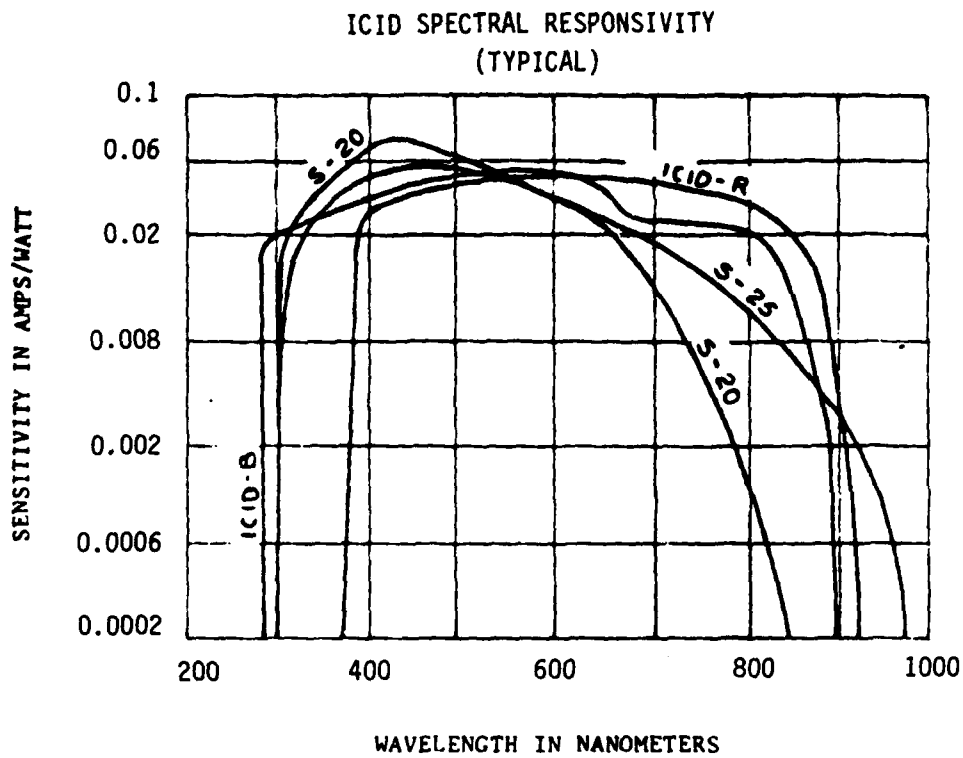


Figure A4. Spectral Response of the XYBION Camera (ICID-R) Compared to Other Conventional Photocathodes

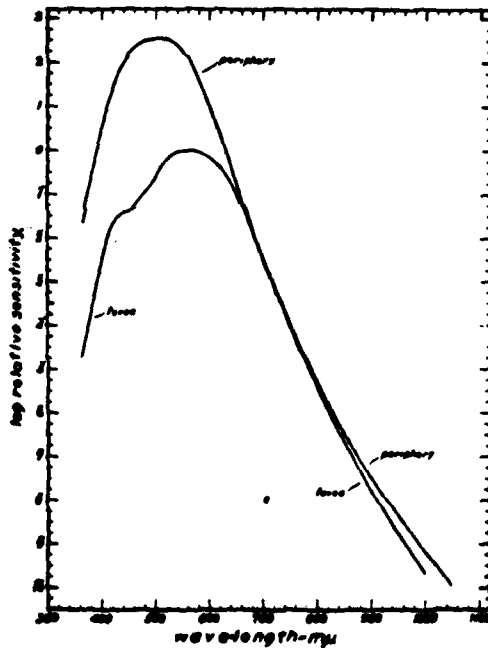


Figure A5. Spectral Sensitivity of the Human Eye [1]

S-142-85

$$\begin{aligned}
 A_0 &= 75 \text{ cm}^2 \\
 \rho_t(\lambda) &= 0.1 \\
 F_{\text{MCP}} &= 0.8 \\
 A_{\text{eye}} &= 40 \text{ mm}^2 \text{ (dark adapted)}
 \end{aligned}$$

A.4 MODELING RESULTS

Figure A6 is an overview of the surveillance system operation to ranges of 200 meters. The fact that the camera dynamic range will not accommodate some of the high SNR's displayed has been ignored to illustrate the functional form of SNR with distance. Applying a fixed SNR ceiling would produce a flat plateau in the high SNR region. Examination of Figure A6 reveals an R^{-2} SNR dependence along the axes and an R^{-4} dependence along the diagonal from the origin to the (200,200) point.

The amount by which the searchlight brightness exceeds the dark-adapted eye threshold is shown as a function of eye to illuminator range in Figure A7. The light source is easily visible under favorable conditions at ranges in excess of 200 meters.

The quantity of interest is the TV SNR when the searchlight intensity is decreased to equal the eye threshold at the target distance. This can be obtained with the present model by taking the difference (in dB space) between the diagonal of Figures A6 and A7. Figure A8 illustrates that for a 3½ inch aperture, the required 15.6 dB sensor advantage over the eye is achieved at a range of a little more than 40 meters for the present system (RG 830 filter). Figure A9 shows that this range approximately doubles for an aperture diameter doubling to 7 inches. This is expected since the ratio of TV SNR to eye SNR (Equations (9) through (11)) has an R^{-2} dependence and the aperture area has a D^2 dependence. Increasing the aperture to 11 inches generates tactically useful ranges as shown in Figure A10.

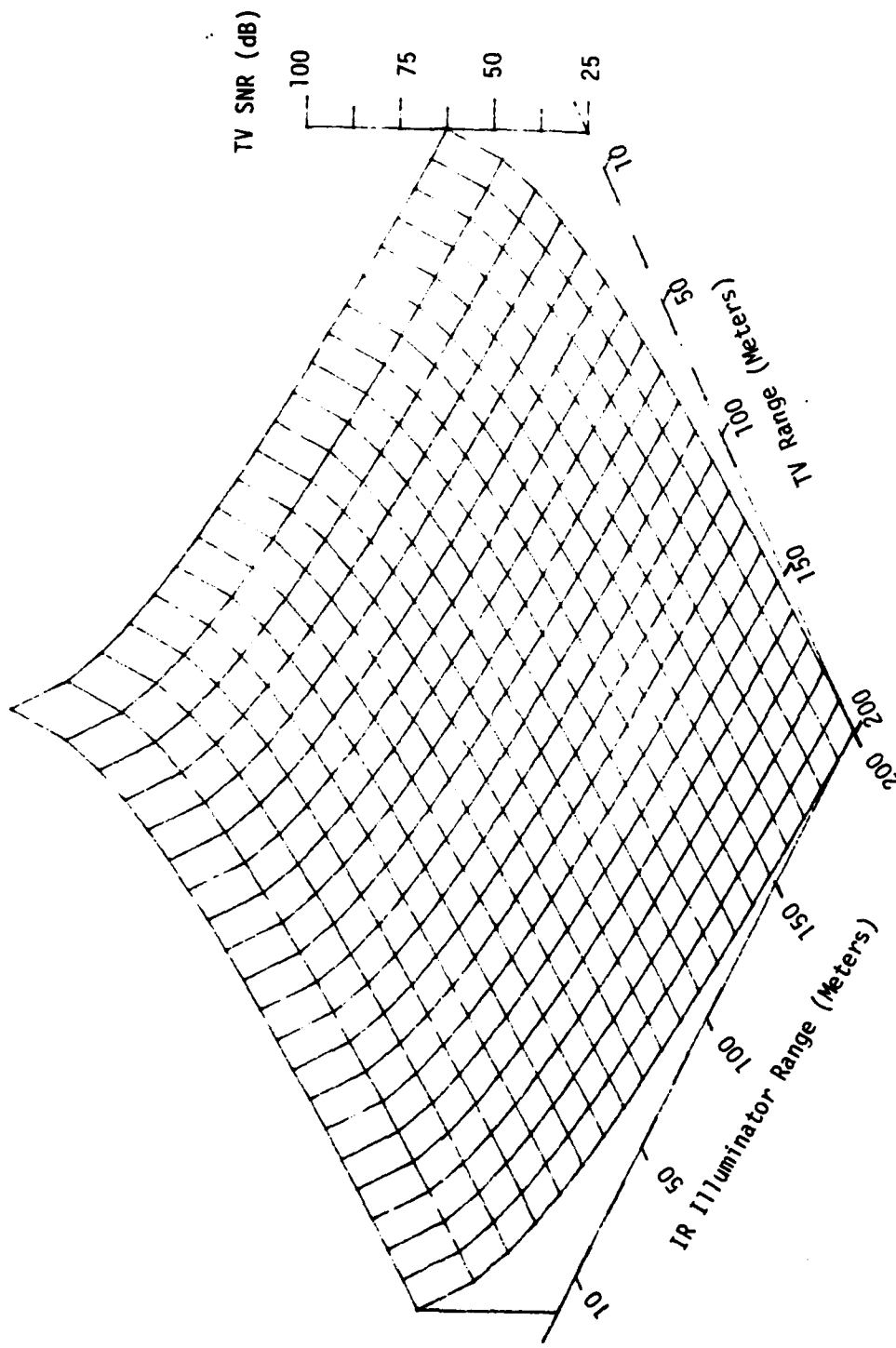


Figure A6. Intensified CCD TV Signal-to-Noise Ratio as a Function of TV Sensor Range and Illuminator Range

S-143-85

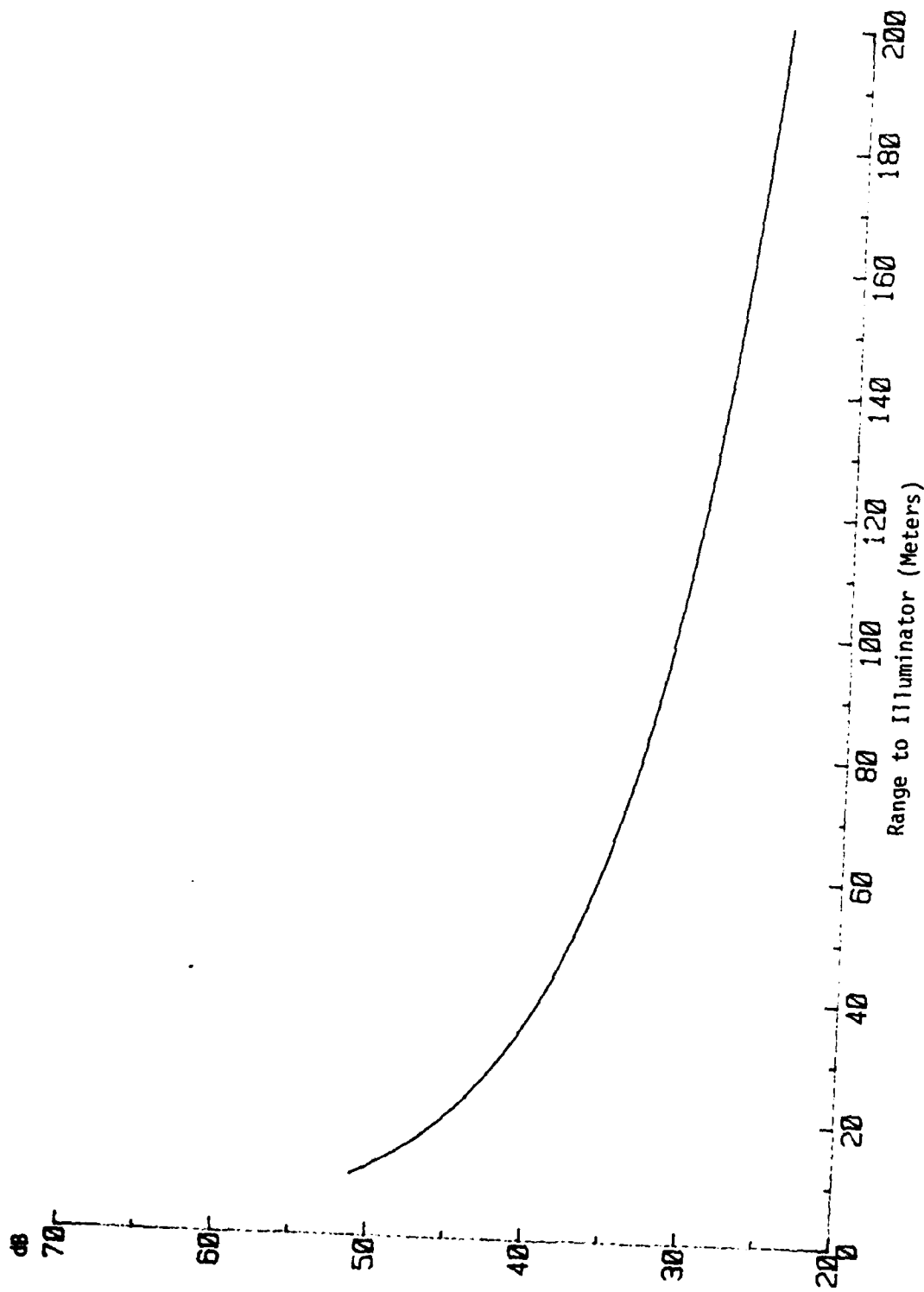


Figure A7. Signal-to-Eye-Threshold vs. Range to Illuminator

S-144-85

0003-85-JJ1/v

A11

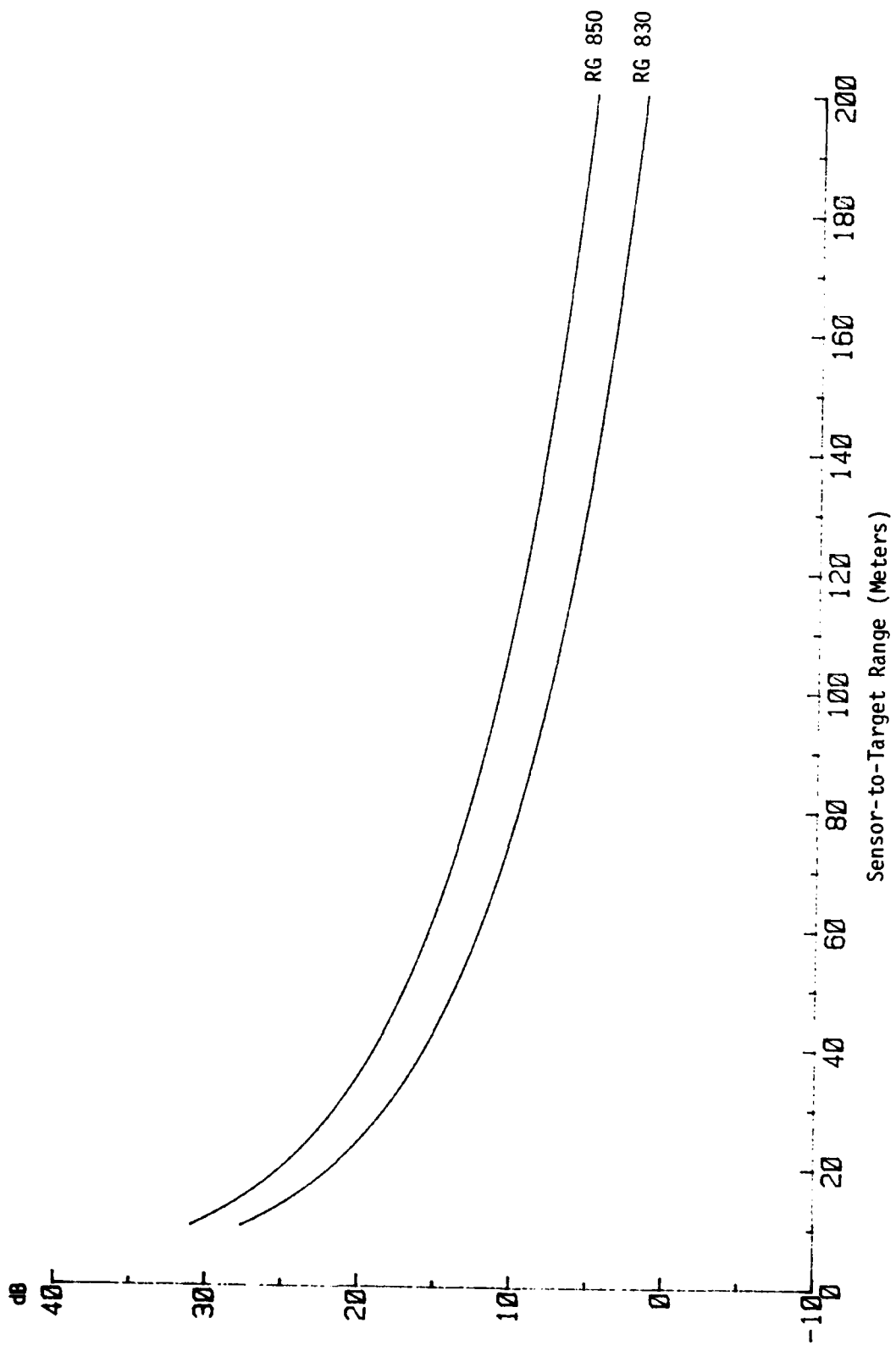


Figure A8. TV SNR Excess at the Sensor Over Eye Signal-to-Threshold at the Target for a Sensor of 75 cm² Area (3½ inch aperture with central obstruction)

S-145-85

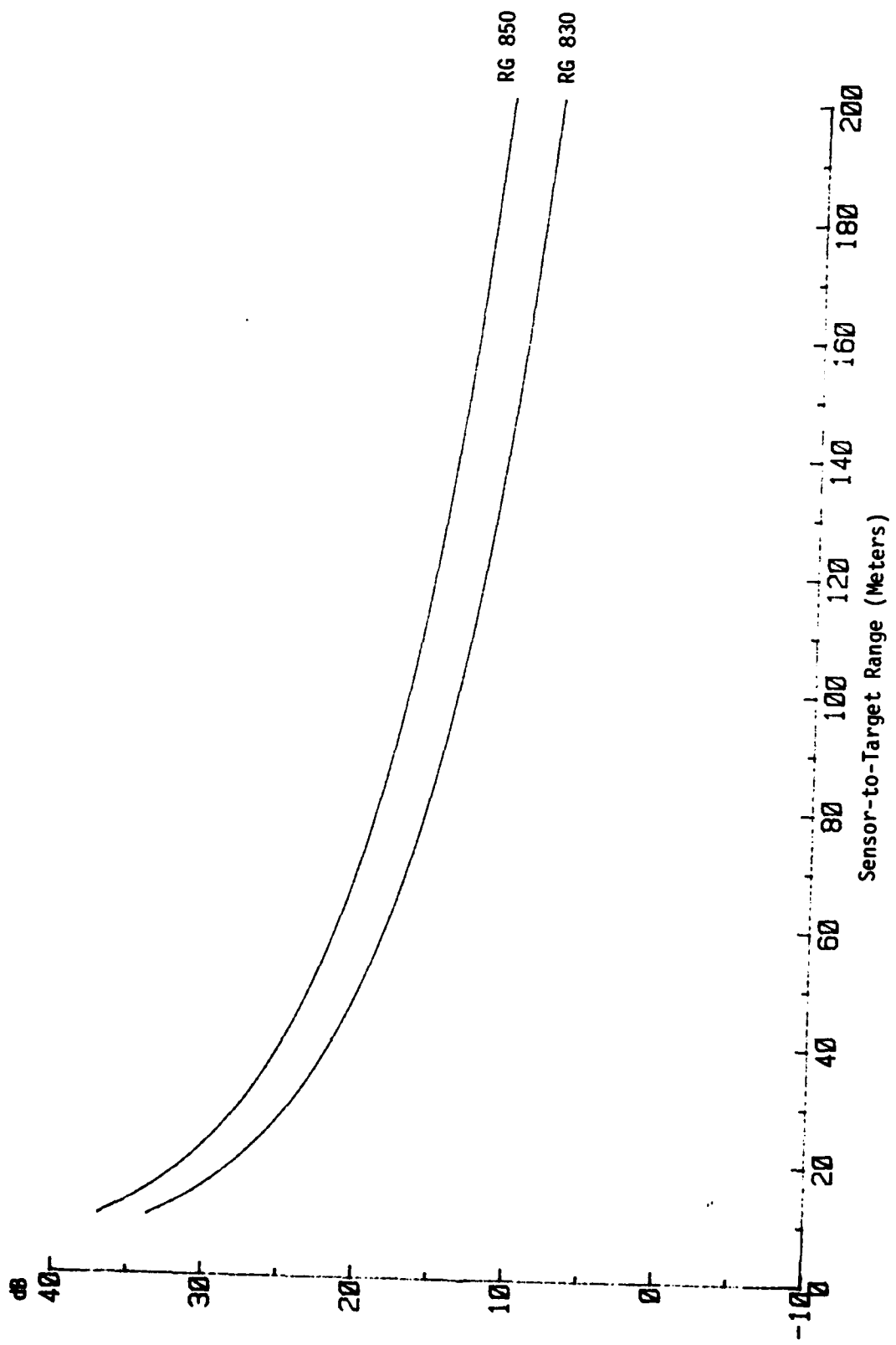


Figure A9. TV SNR Excess at the Sensor Over Eye Signal-to-Threshold at the Target for a Sensor of 300 cm² Area (7 inch aperture with central obstruction)

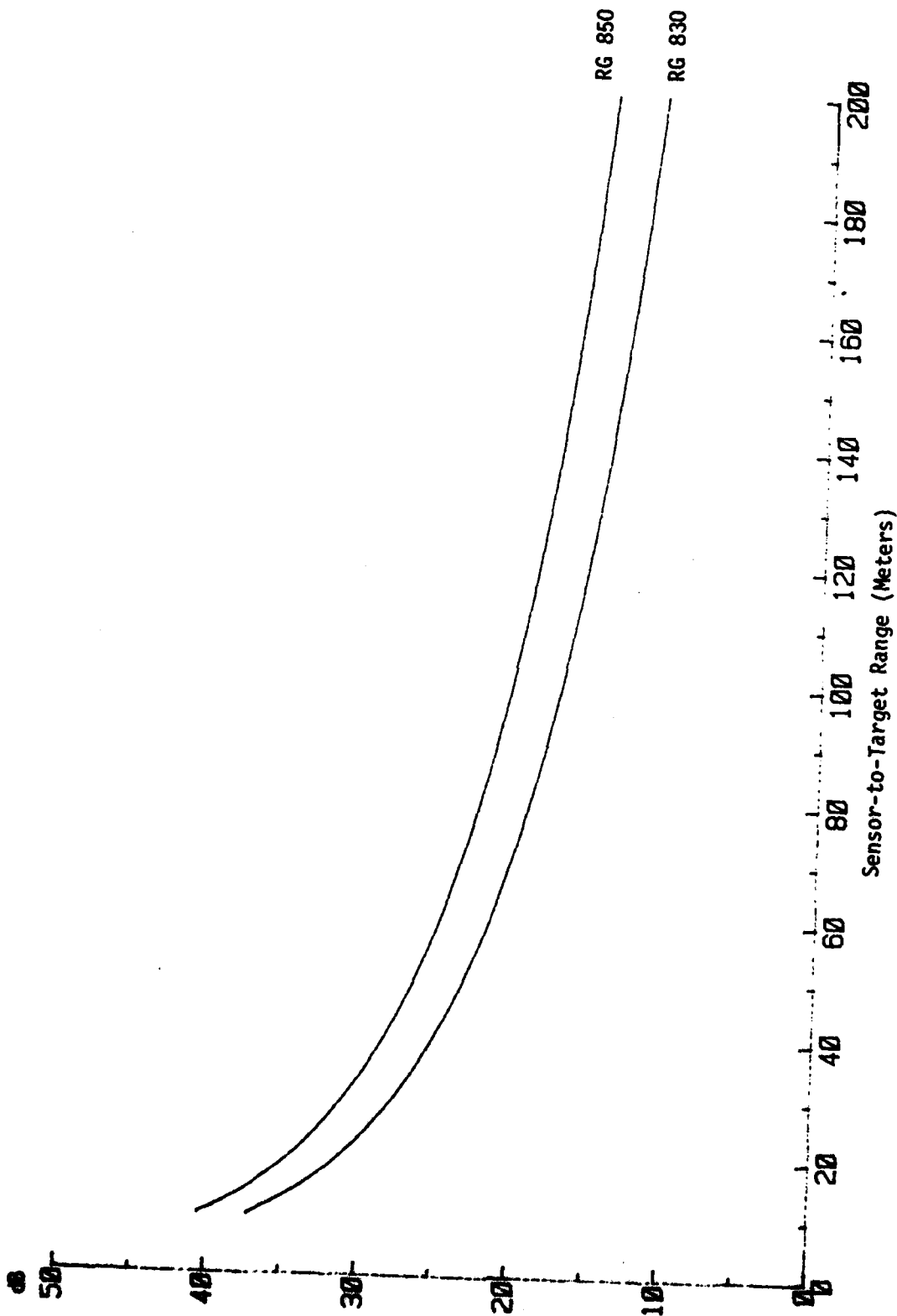


Figure A10. TV SNR Excess at the Sensor Over Eye Signal-to-Threshold at the Target for a Sensor of 675 cm² Area (11 inch aperture with central obstruction)

S-147-85

A.5 DISCUSSION

The eye response to wavelengths beyond 800 nanometers is non-negligible when the R^2 advantage apparent from an examination of Equations (9) and (11) is considered. Varying the illuminator distance independently of the sensor distance has no effect on the problem, since the illuminator to target distance disappears in the ratio of Equations (9) to (10).

The XYBION camera has a decreasing quantum efficiency with wavelength because of the effort XYBION has made to obtain a flat response in the responsivity units of Figure A4. The quantum efficiency can be calculated from the responsivity:

$$\eta = \frac{R_i}{0.808\lambda} \quad , \quad (12)$$

where R_i is in amperes per watt and λ is in micrometers. Photocathodes exist with η in excess of 0.1 at 800 nanometers, while the XYBION has $\eta < 0.05$ at this wavelength.

The only complete solution to the problem while using the current SB-100 illuminators is to increase the aperture area to at least 675 cm^2 while maintaining the minimum illuminator intensity necessary for an acceptable TV SNR.

The only solution which does not require illumination level adjustment is to use a different illuminator and sensor which operate outside the eye's spectral response. A $1.06 \mu\text{m}$ laser illuminator and an S-1 intensifier response is an example of such a system.

APPENDIX A
REFERENCES

1. Griffin, D. R., R. Hubbard and G. Wald, "The Sensitivity of the Human Eye to Infra-Red Radiation", JOSA, Vol. 37, No. 7, pp. 546-554 (July 1947).
2. SB-100 High Intensity Searchlight with Schott RG 830 IR Filter, sold by Fairington Technologies, Inc.
3. Dereniak, E. L. and D. G. Crowe, Optical Radiation Detectors, Chap. 5, Wiley (1984).
4. Handbook of Optics, Fig. 32, Chap. 32, McGraw-Hill (1978).
5. Ealing Optics Catalog, p. 183 (1984/85).
6. Laser Focus Buyer's Guide, p. 451 (1983).

APPENDIX B
ALTITUDE-AZIMUTH MOUNT DRAWINGS

PARTS LIST

Job #0005 UA Azimuth/Altitude Head

Part #	Qty.	Name	Supplier	P/N
0001	1	Shaft, Main Lower		
0002	1	Plate, Bottom		
0003	1	Shaft, Main Upper		
0004	1	Plate, Mount		
0005	1	Plate, Lockdown Cover		
0006	2	Hub, Lockdown		
0007	1	Gear, Azimuth	Browning	P/N BWG24100-1 3/8bore
0008	1	Gear, Altitude	Browning	P/N BWG24100-1 3/8bore
0009	2	Bearing, Main		17mm ID x 40mm OD x 12mm L
0010	1	Housing, Main		
0011	2	Gear, Worm	Boston	GLUH 12924
0012	1	Shaft, Mount Driver		
0013	1	Shaft, Mount Floating		
0014	2	Housing, Worm		
0015	2	Switch, Altitude Stop	Micro Switch	
0016	2	Bearing, Large	Berg	P/N B7-42
0017	4	Bearing, Worm		
0018	2	Shaft, Worm		
0019	2	Bearing, Small	Berg	P/N B7-41
0020	2	Plate, Motor Mount		
0021	1	Housing, Altitude		
0022	1	Plate, Altitude Housing Cover		
0023	2	Motor	Portascap	P/N B 216E
0024	2	Gearbox	Portascap	P/N B-24
0025	1	Support, Mount Plate		

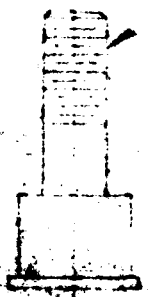
REVISIONS		DATE	APPROVED
ITR	DESCRIPTION		

27 (201) THRU
 20-UNC X .50 WITH ENDS

2.095

1.062

650
 MIN



1.031

2.155

SPINDLE DIMPLES
 W/C DRILL 2PL
 S.B.C.

14142 3/8-24 UNF L.H.
 FULL

CONTRACT NO.		APPROVALS		DATE
		DRAWN D. SMITH		5/25/68
		CHECKED		
UNLESS OTHERWISE SPECIFIED DIMENSIONS ARE IN INCHES TOLERANCES ARE:		FUNCTIONS DECIMALS ANGLES		
		± .01 ± 1°		
		± .002 ± 30.2		
INTERNAL		FINISH		
16 CRES				
DO NOT SCALE DRAWING		SCALE FULL		SHEET 1 OF 1
SIZE CODE IDENT NO.		DRAWING NO.		
A		0005-0001		

REV. NO.

REVISIONS

DESCRIPTION

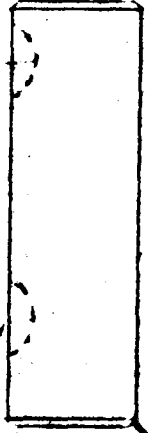
DATE

BY

APPROVED

#201 WOOD 3PL 930

187



.3750 / .3798 DIA

1250

1.25 X .450 DIA. 2PL

QTY FROM PART OR NOMENCLATURE IDENTIFYING NO. OF DESCRIPTION

UNLESS OTHERWISE SPECIFIED DIMENSIONS ARE IN INCHES FRACTIONS DECIMALS ANGLES

1/64 TH. 0.003 10

APPROVALS DATE

DRAWN BY CHECKED ISSUED

303 CRES

DO NOT SCALE DRAWING

CONTRACT NO.

SHAFT, MOUNT DRIVER

SIZE FSCM NO. DWG. NO. REV.

A 0005-0012

SCALE 2/1 SHEET 1 OF 1

APPLICATION

DATE

BY

APPROVED

REVISIONS

DESCRIPTION

LTR

1181

APPROXIMATE POSITION OF
DRAWING

906

.125

Beam Thickness
Press Die



781

2.106

2097 2098
2099

UNLESS OTHERWISE SPECIFIED
DIMENSIONS ARE IN INCHES
FRACTIONS DECIMALS ANGLES

DATE 1/11/60
DRAWN BY J. SMITH
CHECKED BY

CONTRACT NO.

APPROVALS

DATE

SHAPET, YORK

SIZE CODE DESIGNATION DRAWING

A

SCALE 2/1

DO NOT SCALE DRAWING

REVISION

NO. OF

BY

DATE

BY

DATE

BY

DATE

BY

DATE

BY

DATE

BY

DATE

BY

DATE

BY

DATE

BY

DATE

BY

DATE

BY

DATE

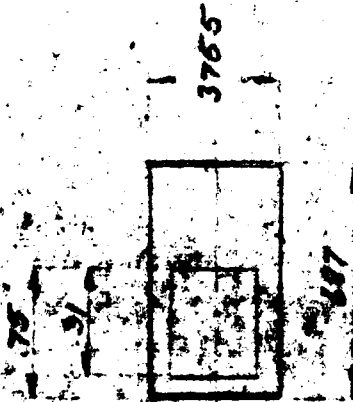
BY

DATE

BY

DATE

REVISIONS
DESCRIPTION



UNLESS OTHERWISE SPECIFIED DIMENSIONS ARE IN INCHES TOLERANCES ARE		CONTRACT NO.	
FRACTIONS DECIMALS ANGLES		APPROVALS	DATE
1/16 1/32 1/64 1/8 1/4 3/8 1/2 3/4 1 1 1/2 2 3 4		DRAWN	
MATERIAL		CHECKED	
PIC STOCK 303			
FINISH			
DO NOT SCALE DRAWING			
TOLERANCE			
FINISH			
SCALE			
SHEET			
OF			

SHAFT, MOUNT FLOATING

SIZE CODE IDENT NO. DRAWING NO.

A 3765-0001

SCALE SHEET OF

REVISIONS

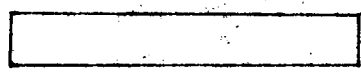
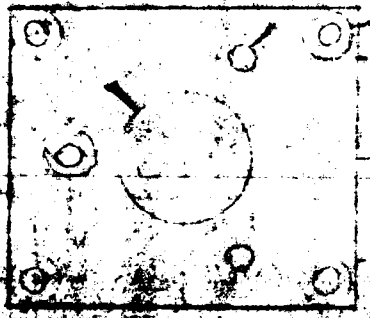
DATE

BY

875

887

.362 .362



.500

1.000

.290 .390

PLATE, MOTOR MOUNT
ESCAPES 214

UNLESS OTHERWISE SPECIFIED
DIMENSIONS ARE IN INCHES
FRACTIONS DECIMALS ANGLES

DESIGN NO.

1/2 XX 1/2 XX 1/2

MATERIAL

FINISH

LEG NOT SCALE DRAWING

APPROVALS

DRAWN

CHECKED

DATE

6-2-55

UNCL. IN

APPLICATION

SIZE CODE IDENT. NO.

A

DRAWING NO.

0005-0020

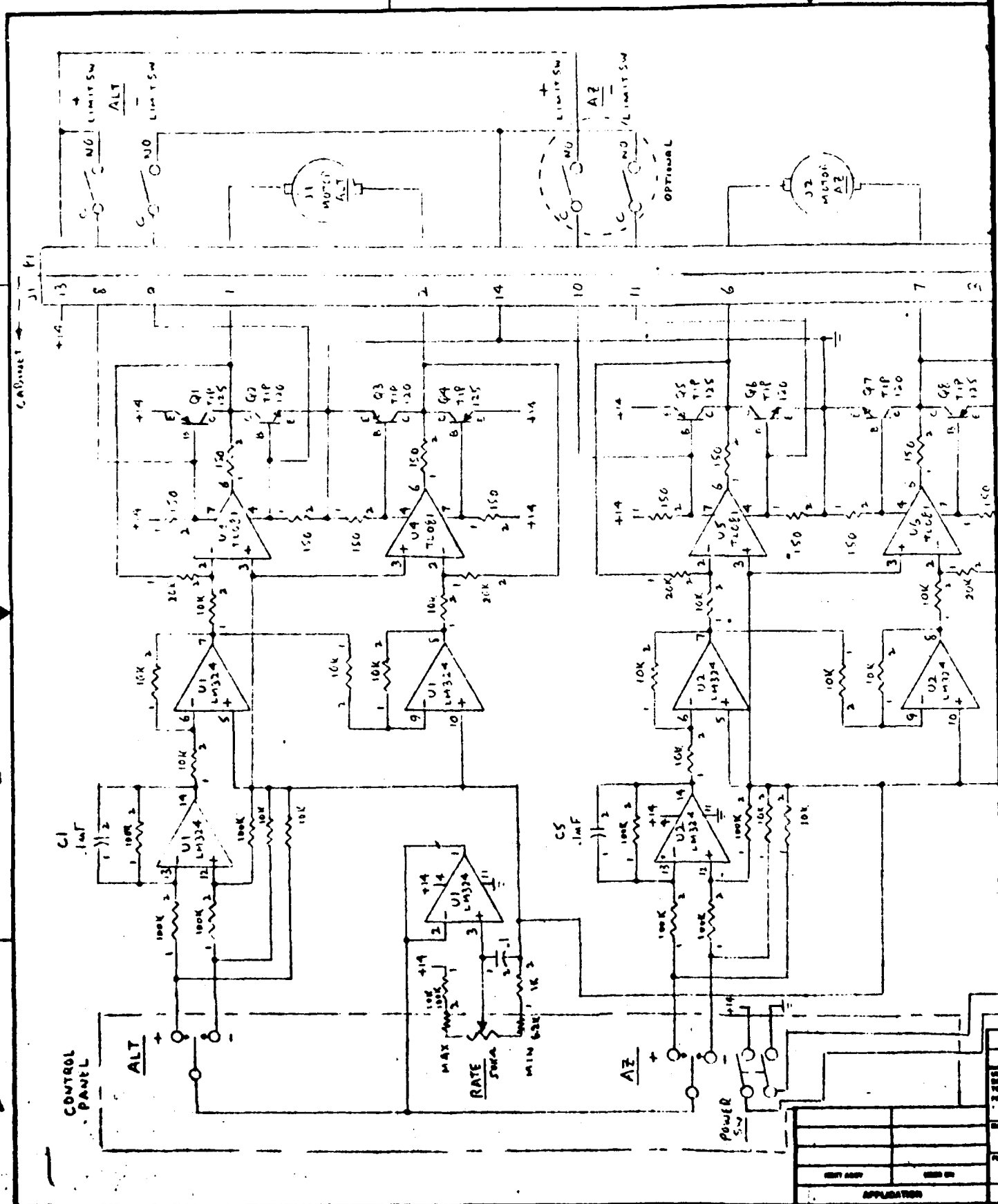
SCALE

1/1

SHEET

1 OF 1



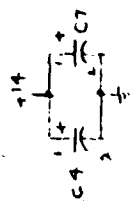
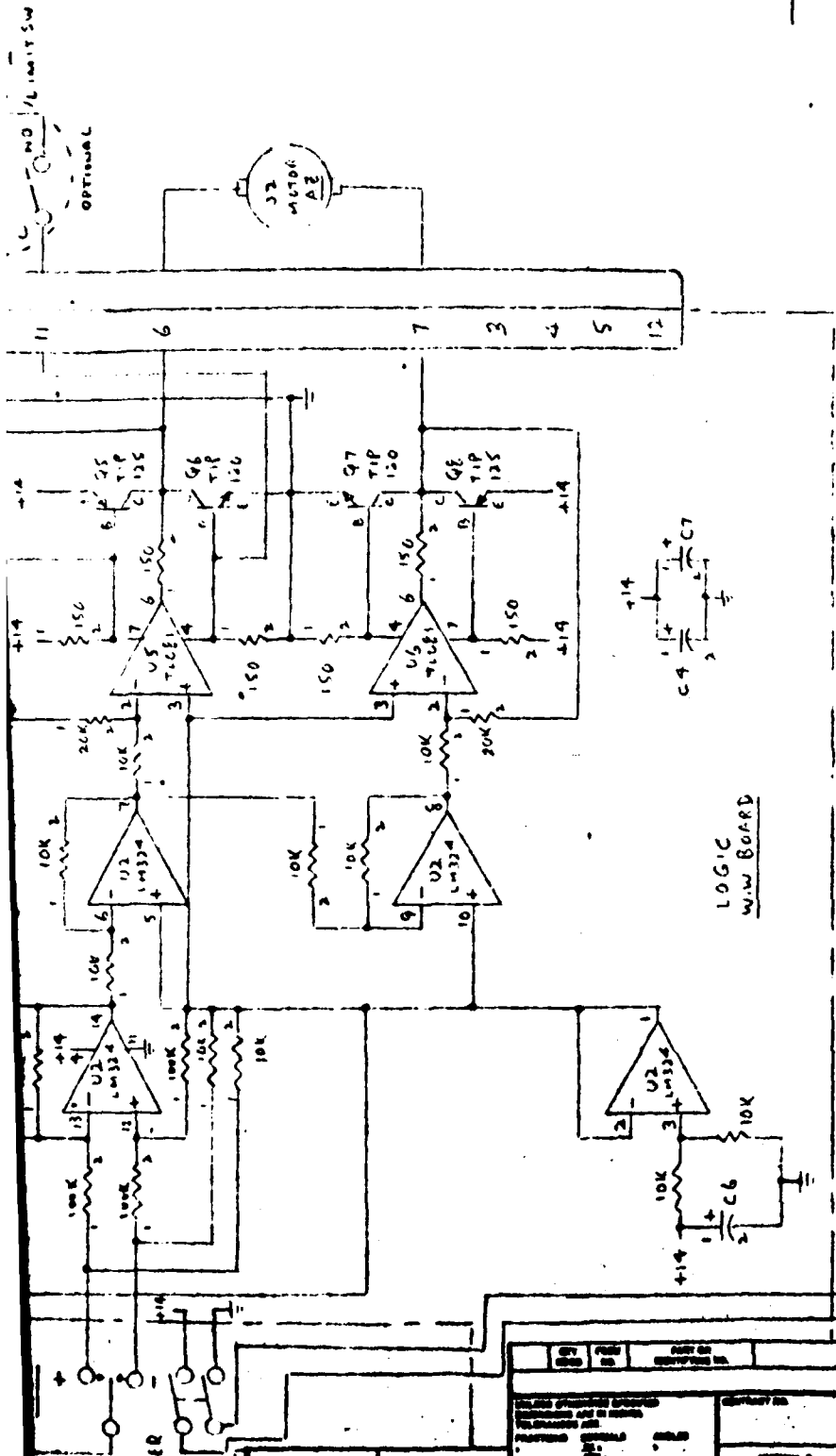


APPLICATION	

2

1

REVISIONS				
NO	REV	DESCRIPTION	DATE	APPROVED



LOGIC
w/w BOARD

BATTERY
+14V

2

PARTS LIST		DATE OF REVISION		DESCRIPTION OF REVISION		APPROVED	

DELTA TAU COMM SYSTEMS SCHEMATIC TELESCOPE POSITIONER	
APPROVED M. BONDAR 6/7/85	DATE 6/7/85
PART NO. C	PART NO. 601972-320
SCALE	SHEET 3 OF 4

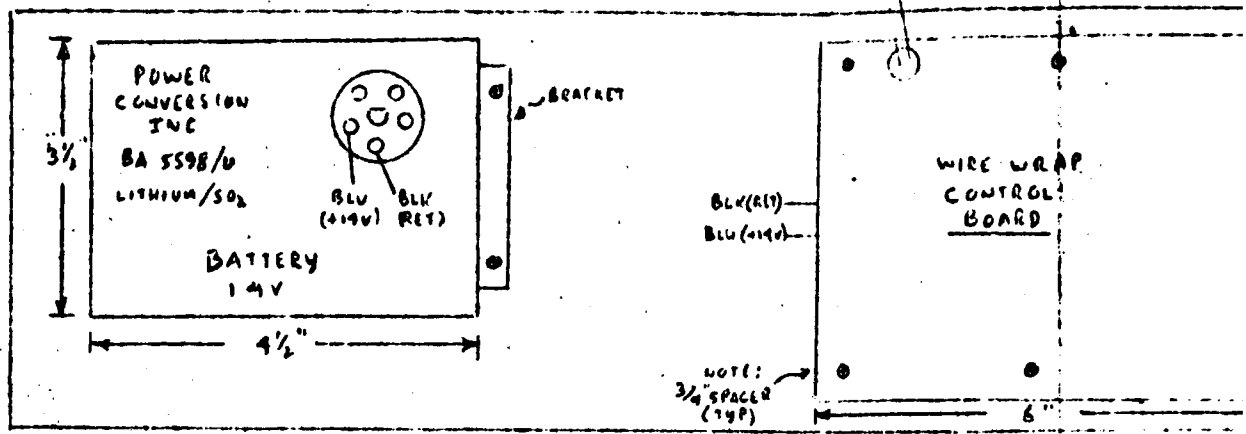
4

3

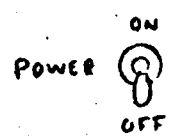
D

INSIDE PLAN VIEW

TO J1 (BACK PANEL)
AND CONTROL PANEL



C



10"

BACK PANEL

J1 (14 PIN ROUND CONNECTOR)

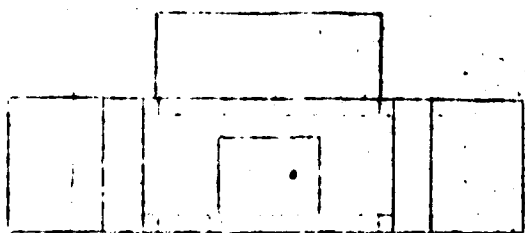


3

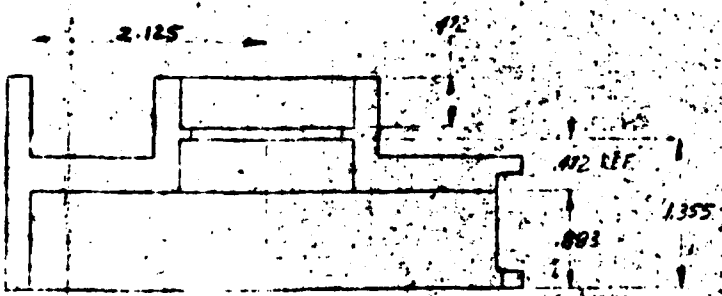
2

1

REVISIONS				
NO.	BY	DESCRIPTION	DATE	APPROVED



1.000



2

1.000 P.A.

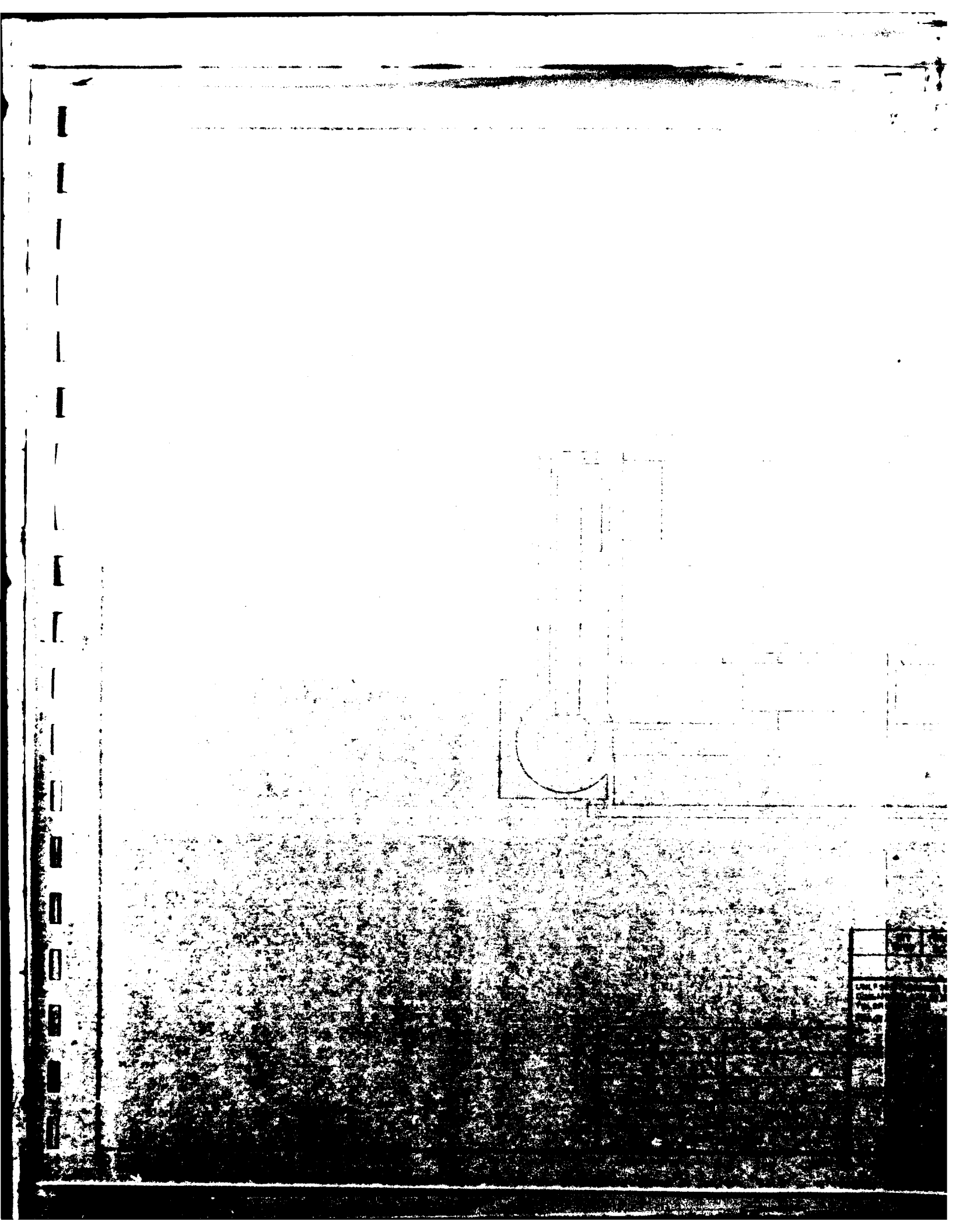
P.A.

NO.	REV.	DATE	DESCRIPTION	BY	CHKD.	DATE

Houslow, Main

2000-0010

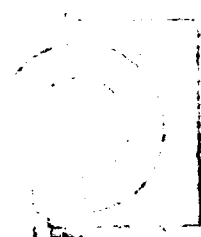
1000-1001



REVISIONS

DATE

APPROVAL



QTY	PCB	PART OR	DESCRIPTION
REQD	NO.	IDENTIFYING NO.	OR DESCRIPTION
PARTS LIST			
UNLESS OTHERWISE SPECIFIED DIMENSIONS ARE IN INCHES TOLERANCES ARE		CONTRACT NO.	
DRAWN BY		DATE	
CHECKED BY		DATE	
APPROVED BY		DATE	

212

TAP 2 1/2" DIA. X 1/2" L.P.
212

COR
4 PL

.575
.927

.750
.781
1.9-7
.250

1000
.425
500
.425

.250

.362 .362

.625

3.000

BORE/REAM THRU
375 NEAR WALL
312 FOR WALL

BY	DATE
ALL DIMENSIONS UNLESS OTHERWISE SPECIFIED TO BE IN INCHES AND FRACTIONS.	

DWG. NO

SH

REV.

REVISIONS

REV.

DESCRIPTION

DATE

APPROVED

.312

DRILL #32 THRU
+ C BORE FOR #4 CAP SCREW
FAR SIDE 4PL.

312

1.126

.125
2PL.

3.000

2

REV

FORM

PART OR IDENTIFIED NO.

SIGNATURE OR DESCRIPTION

DATE

PARTS LIST

ALL DIMENSIONS SPECIFIED
UNLESS NOTED OTHERWISE

FINISHES: 1.000
2.000
3.000

4.000
5.000
6.000

7.000
8.000
9.000

10.000
11.000
12.000

13.000
14.000
15.000

16.000
17.000
18.000

19.000
20.000
21.000

22.000
23.000
24.000

25.000
26.000
27.000

28.000
29.000
30.000

31.000
32.000
33.000

34.000
35.000
36.000

37.000
38.000
39.000

40.000
41.000
42.000

43.000
44.000
45.000

46.000
47.000
48.000

49.000
50.000
51.000

52.000
53.000
54.000

55.000
56.000
57.000

58.000
59.000
60.000

61.000
62.000
63.000

64.000
65.000
66.000

67.000
68.000
69.000

70.000
71.000
72.000

73.000
74.000
75.000

76.000
77.000
78.000

79.000
80.000
81.000

82.000
83.000
84.000

85.000
86.000
87.000

88.000
89.000
90.000

91.000
92.000
93.000

94.000
95.000
96.000

97.000
98.000
99.000

100.000
101.000
102.000

103.000
104.000
105.000

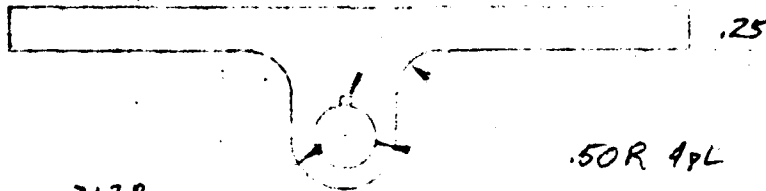
106.000
107.000
108.000

109.000
110.000
111.000

112.000
113.000
114.000

115.000
116.000
117.000

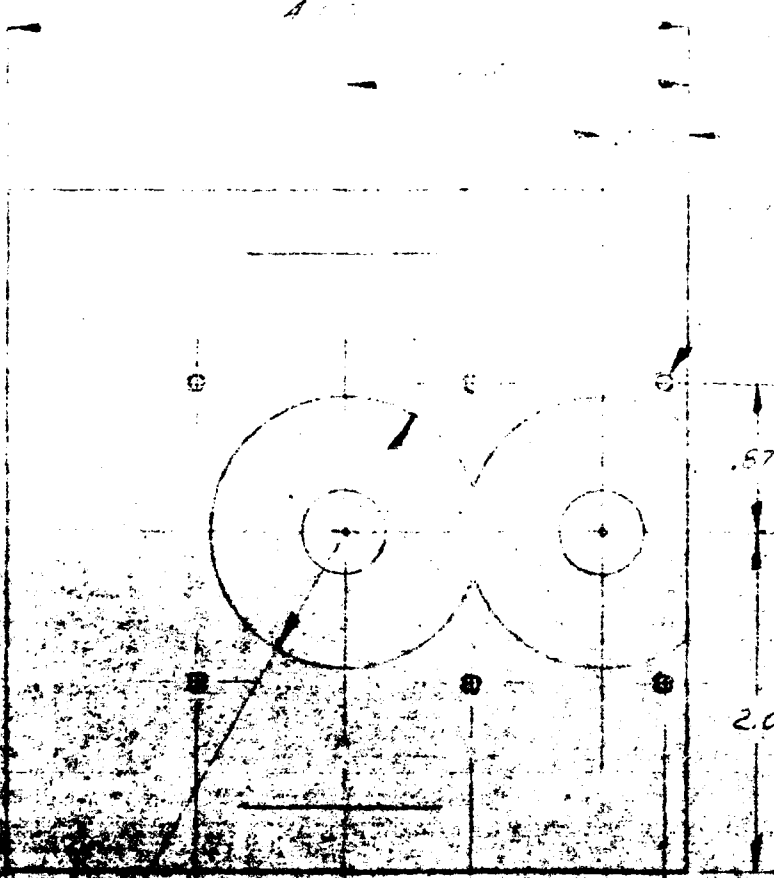
BROACH $\frac{1}{16}$ KEY SLOT



.312R.
6PL

.50R 4PL

REAM .3750 THRU.



4.000

.875

2.000

1.250

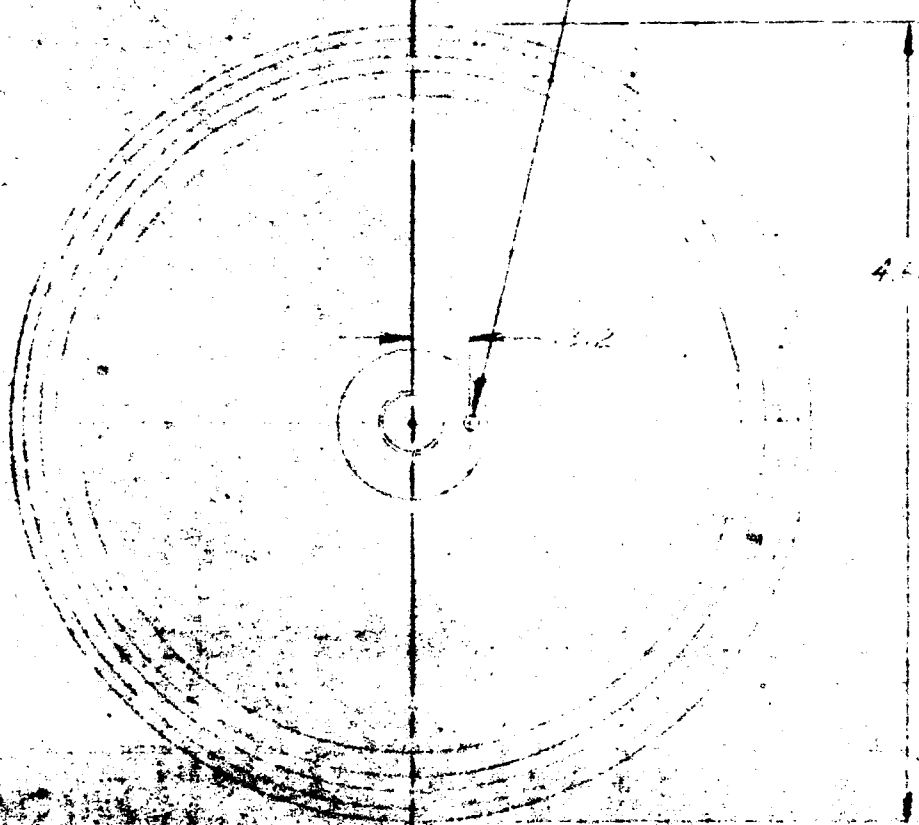
.125 2PL

.375 2PL

REV	DATE	BY	CHKD

PFAM FOR .093-DC WEL
SLIP - FIT $\times .25$ DP.

A



4.4250

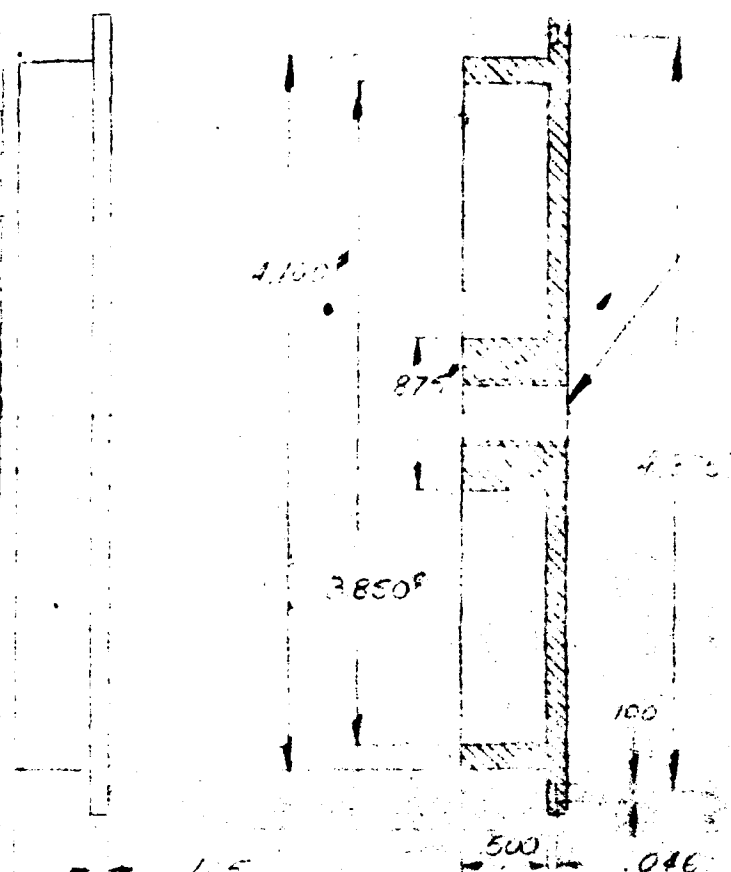
2.12

QTY	PRICE
REQD	NO
UNLESS OTHERWISE SPECIFIED DIMENSIONS ARE IN INCHES TOLERANCES ARE:	
FRAC	DECIMAL

DWG. NO.

REV. DESCRIPTION

VEL
DP.



DRILL 1/8" DIA. 4 L.H. T.H.F.

SECTION A-A

QTY REQD	PCRN NO	PART OR IDENTIFYING NO.	NOMENCLATURE OR DESCRIPTION	INTERNAL SPECIFICATION
----------	---------	-------------------------	-----------------------------	------------------------

PARTS LIST

UNLESS OTHERWISE SPECIFIED DIMENSIONS ARE IN INCHES UNLESS OTHERWISE SPECIFIED	CONTRACT NO.			

DWG. NO. SH REV

REVISIONS

REV	DESCRIPTION	DATE	APPROVED
-----	-------------	------	----------

312



2

QTY RECD	PDCM NO	PART OR IDENTIFYING NO	NOMENCLATURE OR DESCRIPTION	MATERIAL SPECIFICATION
PARTS LIST				
UNLESS OTHERWISE SPECIFIED DIMENSIONS ARE IN INCHES TOLERANCES ARE FRACTIONS DECIMALS ANGLES $\frac{1}{16}$.01 10° $\frac{1}{32}$.003		CONTRACT NO.		
MATERIAL		APPROVALS	DATE	SUPPORT, MOUNT PLATE
6061 ALUM.		DESIGN	DATE	
FINISH		CHECKED	ISSUED	SIZE
BLK ANOD.				PDCM NO.
DO NOT SCALE DRAWING				DWG. NO.
				0005-0025
				REV
				SCALE FULL
				SHEET 1 OF 1

DATE
FILMED
5-8