

AD-A173 167

SELECTED MEDICAL CARE STATISTICS THIRD QUARTER FY-86
(U) WASHINGTON HEADQUARTERS SERVICES (DOD) DC
DIRECTORATE FOR INFORMATION OPERATIONS AND REPORTS

1/1

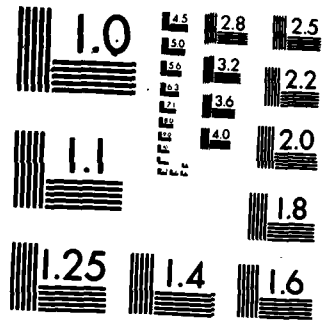
UNCLASSIFIED

30 JUN 86 DIOR/L02-86/03

F/G 6/5

ML





MICROCOPY RESOLUTION TEST CHART
NATIONAL BUREAU OF STANDARDS-1963-A

10

L02

Department of Defense
SELECTED MEDICAL CARE STATISTICS
Third Quarter, FY-86.
Quarter Ending June 30, 1986



DTIC
 ELECTE
 OCT 28 1986
 S B

DISTRIBUTION STATEMENT A
 Approved for Public Release
 Distribution Unlimited

AD-A173 167

DTIC FILE COPY

86 10 8 141

Department of Defense Selected Medical Care Statistics

Quarter Ending June 30, 1986

*Washington Headquarters Services
Directorate for Information
Operations and Reports*

FOR SALE BY THE SUPERINTENDENT OF DOCUMENTS
U.S. GOVERNMENT PRINTING OFFICE
WASHINGTON, D.C. 20540

DTIC and NTIS identification number for this publication is DIOR/LO2-86/03.

FOREWORD

Selected Medical Care Statistics (SMCS) is a quarterly publication prepared by the Washington Headquarters Services, Directorate for Information Operations and Reports (WHS/DIOR) of the Office of the Secretary of Defense.

SMCS presents quarterly summary data concerning medical care provided at fixed military medical facilities located in (1) the United States and (2) outside the United States, in territories, possessions and foreign countries. This publication contains pie charts which are based on the percent of the worldwide DoD total for each of the categories. Admissions and beds occupied by dependents of other uniformed personnel (VHS, CG, NOAA) are less than one percent and are included in the other category.

This publication is generated from a computerized data base developed and maintained in consonance with Department of Defense Instruction (DoDI) 6015.14, November 14, 1977, under Reports Control Symbol DD-COMP(Q)1474 by the Manpower Management Information Division of WHS/DIOR.

Accession For	
NTIS GRA&I	✓
DTIC TAB	[]
Unannounced	[]
Justification	
By	
Distribution/	
Availability Codes	
Avail and/or	
Special	
Dist	A-1

Tables show admissions, discharges, deaths, and live births.

Quality Inspected (stamp)

Admissions, discharges, deaths, and live births.

This information is provided from a computerized data base.

TABLE OF CONTENTS

TABLE NUMBER		PAGE
Table 1.1	Operating Beds/Operating Bassinets/Beds Occupied - Worldwide.....	1
Figure 1.1	Beds Occupied - Percent of DoD Total Worldwide.....	2
Table 1.2	Operating Beds/Operating Bassinets/Beds Occupied - United States.....	3
Table 1.3	Operating Beds/Operating Bassinets/Beds Occupied - Outside United States.....	4
Table 2.1	Admissions - Worldwide.....	5
Figure 2.1	Admissions - Percent of DoD Total Worldwide.....	6
Table 2.2	Admissions - United States.....	7
Table 2.3	Admissions - Outside United States.....	8
Table 3.1	Outpatient Visits and Live Births - Worldwide.....	9
Figure 3.1	Outpatient Visits - Percent of Worldwide Total.....	10
Table 3.2	Outpatient Visits and Live Births - United States.....	11
Table 3.3	Outpatient Visits and Live Births - Outside United States.....	12
	GLOSSARY.....	14

TABLE 1.1
DEPARTMENT OF DEFENSE
SELECTED DATA CONCERNING MEDICAL CARE
PROVIDED AT FIXED MILITARY FACILITIES
FOR QUARTER ENDING
JUNE 1986

OPERATING BEDS - WORLDWIDE		DOD TOTAL	ARMY FACILITIES	NAVY FACILITIES	AIR FORCE FACILITIES
1.	NUMBER OF OPERATING BEDS	17,713	7,807	4,157	5,749
2.	NUMBER OF OPERATING BASSINETS	1,979	612	252	1,115
3.	NUMBER OF BEDS OCCUPIED (DAILY AVERAGE)	13,880	6,629	2,978	4,273
4.	BEDS OCCUPIED BY US ACTIVE DUTY UNIFORMED PERSONNEL - TOTAL	5,344	2,540	1,493	1,311
	A. MILITARY	5,299	2,526	1,475	1,298
	(1) ARMY	2,366	2,195	43	128
	(2) NAVY-MARINE CORPS	1,653	1,160	1,388	105
	(3) AIR FORCE	1,280	171	44	1,065
	B. OTHER UNIFORMED PERSONNEL (PHS,CG,NOAA) - TOTAL	45	14	18	13
5.	BEDS OCCUPIED BY RETIRED US UNIFORMED PERSONNEL - TOTAL	2,179	1,094	353	732
	A. RETIRED MILITARY	2,162	1,088	346	728
	(1) ARMY	930	723	61	146
	(2) NAVY-MARINE CORPS	485	133	243	109
	(3) AIR FORCE	747	232	42	473
	B. OTHER RETIRED UNIFORMED PERSONNEL (PHS,CG,NOAA) - TOTAL	17	6	7	4
6.	BEDS OCCUPIED BY DEPENDENTS OF US ACTIVE DUTY MILITARY PERSONNEL - TOTAL	3,842	1,716	750	1,376
	(1) ARMY	1,549	1,385	38	126
	(2) NAVY-MARINE CORPS	898	131	656	111
	(3) AIR FORCE	1,395	200	56	1,139
7.	BEDS OCCUPIED BY DEPENDENTS OF RETIRED AND DECEASED US MILITARY PERSONNEL - TOTAL	1,922	873	301	748
	(1) ARMY	772	576	50	146
	(2) NAVY-MARINE CORPS	435	104	210	121
	(3) AIR FORCE	715	193	41	481
8.	BEDS OCCUPIED BY DEPENDENTS OF OTHER UNIFORMED PERSONNEL (PHS,CG,NOAA) - TOTAL	55	16	19	20
9.	BEDS OCCUPIED BY ALL OTHER BENEFICIARIES - TOTAL	538	390	62	86

**BEDS OCCUPIED—PERCENT OF DOD TOTAL WORLDWIDE
QUARTER ENDING JUNE 30, 1986**

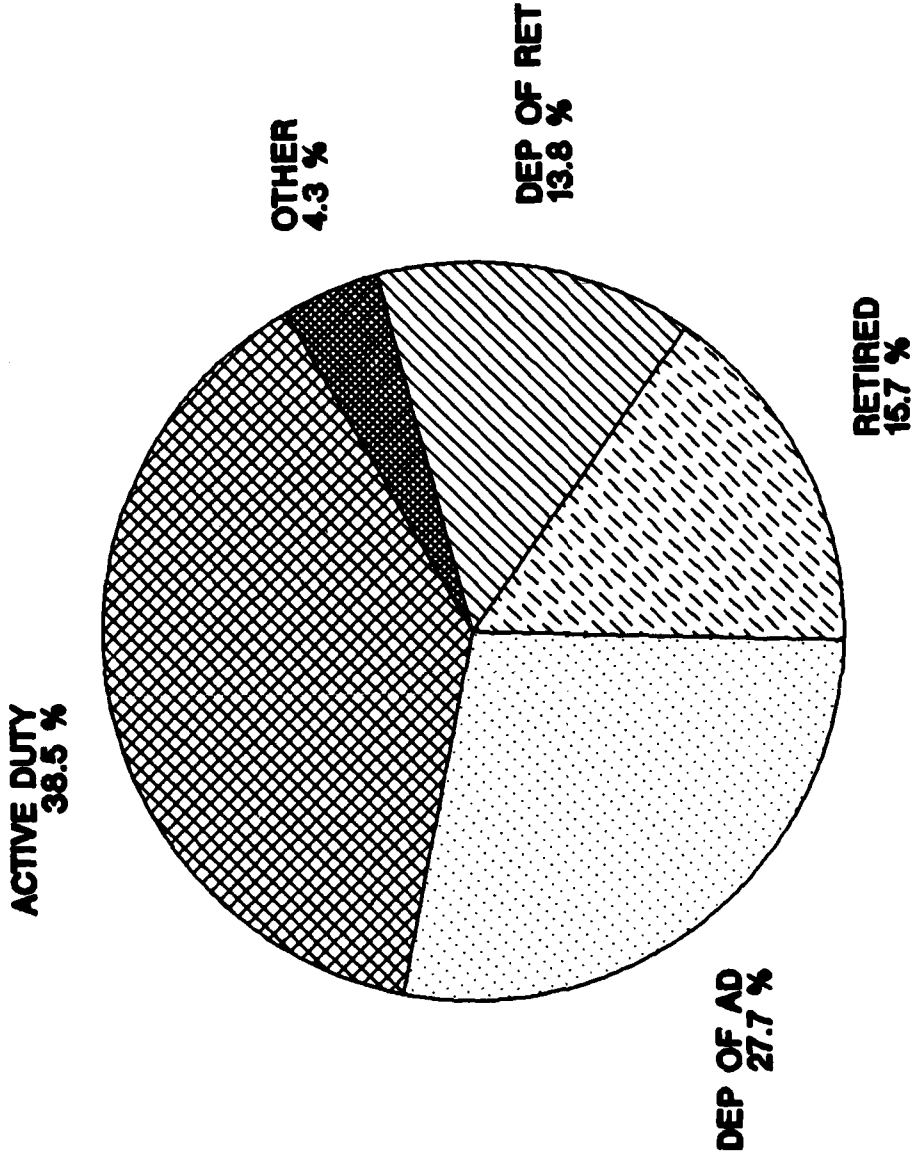


FIGURE 1.1

TABLE 1.2
DEPARTMENT OF DEFENSE
SELECTED DATA CONCERNING MEDICAL CARE
PROVIDED AT FIXED MILITARY FACILITIES
FOR QUARTER ENDING
JUNE 1986

OPERATING BEDS - UNITED STATES		DOD TOTAL	ARMY FACILITIES	NAVY FACILITIES	AIR FORCE FACILITIES
1.	NUMBER OF OPERATING BEDS	15,203	6,436	3,717	5,050
2.	NUMBER OF OPERATING BASSINETS	1,630	459	210	961
3.	NUMBER OF BEDS OCCUPIED (DAILY AVERAGE)	11,833	5,503	2,626	3,704
4.	BEDS OCCUPIED BY US ACTIVE DUTY UNIFORMED PERSONNEL	4,307	1,958	1,286	1,063
A.	MILITARY	4,263	1,944	1,269	1,050
	(1) ARMY	1,793	1,664	36	93
	(2) NAVY-MARINE CORPS	1,432	148	1,202	82
	(3) AIR FORCE	1,038	132	31	875
B.	OTHER UNIFORMED PERSONNEL (PHS,CG,NOAA)	44	14	17	13
5.	BEDS OCCUPIED BY RETIRED US UNIFORMED PERSONNEL	2,110	1,062	343	705
A.	RETIRED MILITARY	2,093	1,056	336	701
	(1) ARMY	893	698	57	138
	(2) NAVY-MARINE CORPS	472	131	238	103
	(3) AIR FORCE	728	227	41	460
B.	OTHER RETIRED UNIFORMED PERSONNEL (PHS,CG,NOAA)	17	6	7	4
6.	BEDS OCCUPIED BY DEPENDENTS OF US ACTIVE DUTY MILITARY PERSONNEL	3,045	1,290	636	1,119
	(1) ARMY	1,148	1,022	31	95
	(2) NAVY-MARINE CORPS	1,793	123	577	93
	(3) AIR FORCE	1,104	145	28	931
7.	BEDS OCCUPIED BY DEPENDENTS OF RETIRED AND DECEASED US MILITARY PERSONNEL	1,879	858	291	730
	(1) ARMY	754	565	45	144
	(2) NAVY-MARINE CORPS	421	103	205	113
	(3) AIR FORCE	704	190	41	473
8.	BEDS OCCUPIED BY DEPENDENTS OF OTHER UNIFORMED PERSONNEL (PHS,CG,NOAA)	54	16	18	20
9.	BEDS OCCUPIED BY ALL OTHER BENEFICIARIES	438	319	52	67

TABLE 1.3
 DEPARTMENT OF DEFENSE
 SELECTED DATA CONCERNING MEDICAL CARE
 PROVIDED AT FIXED MILITARY FACILITIES
 FOR QUARTER ENDING
 JUNE 1986

OPERATING BEDS - OUTSIDE UNITED STATES		DOD TOTAL	ARMY FACILITIES	NAVY FACILITIES	AIR FORCE FACILITIES
1.	NUMBER OF OPERATING BEDS - TOTAL	2,510	1,371	440	699
2.	NUMBER OF OPERATING BASSINETS - TOTAL	349	153	42	154
3.	NUMBER OF BEDS OCCUPIED (DAILY AVERAGE) - TOTAL	2,047	1,126	352	569
4.	BEDS OCCUPIED BY US ACTIVE DUTY UNIFORMED PERSONNEL - TOTAL	1,037	582	207	248
	A. MILITARY - TOTAL	1,036	582	206	248
	(1) ARMY	573	531	7	35
	(2) NAVY-MARINE CORPS	221	12	186	23
	(3) AIR FORCE	242	39	13	190
	B. OTHER UNIFORMED PERSONNEL (PHS,CG,NOAA) - TOTAL	1	0	1	0
5.	BEDS OCCUPIED BY RETIRED US UNIFORMED PERSONNEL - TOTAL	69	32	10	27
	A. RETIRED MILITARY - TOTAL	69	32	10	27
	(1) ARMY	37	25	4	8
	(2) NAVY-MARINE CORPS	13	2	5	6
	(3) AIR FORCE	19	5	1	13
	B. OTHER RETIRED UNIFORMED PERSONNEL (PHS,CG,NOAA) - TOTAL	0	0	0	0
6.	BEDS OCCUPIED BY DEPENDENTS OF US ACTIVE DUTY MILITARY PERSONNEL - TOTAL	797	426	114	257
	(1) ARMY	401	363	7	31
	(2) NAVY-MARINE CORPS	105	8	79	18
	(3) AIR FORCE	291	55	28	208
7.	BEDS OCCUPIED BY DEPENDENTS OF RETIRED AND DECEASED US MILITARY PERSONNEL - TOTAL	43	15	10	18
	(1) ARMY	18	11	5	2
	(2) NAVY-MARINE CORPS	14	1	5	8
	(3) AIR FORCE	11	3	0	8
8.	BEDS OCCUPIED BY DEPENDENTS OF OTHER UNIFORMED PERSONNEL (PHS,CG,NOAA) - TOTAL	1	0	1	0
9.	BEDS OCCUPIED BY ALL OTHER BENEFICIARIES - TOTAL	100	71	10	19

TABLE 2.1
DEPARTMENT OF DEFENSE
SELECTED DATA CONCERNING MEDICAL CARE
PROVIDED AT FIXED MILITARY FACILITIES
FOR QUARTER ENDING
JUNE 1986

ADMISSIONS - WORLDWIDE		DOD TOTAL	ARMY FACILITIES	NAVY FACILITIES	AIR FORCE FACILITIES
10.	NUMBER OF ADMISSIONS	232,188	103,683	52,331	76,174
11.	ADMISSIONS OF US ACTIVE DUTY UNIFORMED PERSONNEL	73,122	31,528	21,116	20,478
	A. MILITARY	72,548	31,397	20,843	20,308
	(1) ARMY	29,756	27,676	581	1,499
	(2) NAVY-MARINE CORPS	22,404	1,671	19,550	1,183
	(3) AIR FORCE	20,388	2,050	712	17,626
	B. OTHER UNIFORMED PERSONNEL (PHS,CG,NOAA)	574	131	273	170
12.	ADMISSIONS OF RETIRED US UNIFORMED PERSONNEL	26,645	12,844	5,163	8,638
	A. ADMISSIONS OF RETIRED MILITARY	26,425	12,767	5,074	8,584
	(1) ARMY	11,300	8,789	871	1,640
	(2) NAVY-MARINE CORPS	6,137	1,405	3,498	1,234
	(3) AIR FORCE	8,988	2,573	705	5,710
	B. ADMISSIONS OF OTHER RETIRED UNIFORMED PERSONNEL (PHS,CG,NOAA)	220	77	89	54
13.	ADMISSIONS OF DEPENDENTS OF US ACTIVE DUTY PERSONNEL (PHS,CG,NOAA)	95,181	40,953	19,928	34,300
	A. ARMY	37,817	33,888	928	3,001
	B. NAVY-MARINE CORPS	23,082	2,984	17,519	2,579
	C. AIR FORCE	34,282	4,081	1,481	28,720
14.	ADMISSIONS OF DEPENDENTS OF RETIRED AND DECEASED US MILITARY PERSONNEL	27,807	11,959	5,001	10,847
	A. ARMY	10,937	8,101	795	2,041
	B. NAVY-MARINE CORPS	6,446	1,365	3,507	1,574
	C. AIR FORCE	10,424	2,493	699	7,232
15.	ADMISSIONS OF DEPENDENTS OF OTHER UNIFORMED PERSONNEL (PHS,CG,NOAA)	1,064	309	383	372
16.	ADMISSIONS OF ALL OTHER BENEFICIARIES	8,369	6,090	740	1,539

**ADMISSIONS-PERCENT OF DOD TOTAL WORLDWIDE
QUARTER ENDING JUNE 30, 1986**

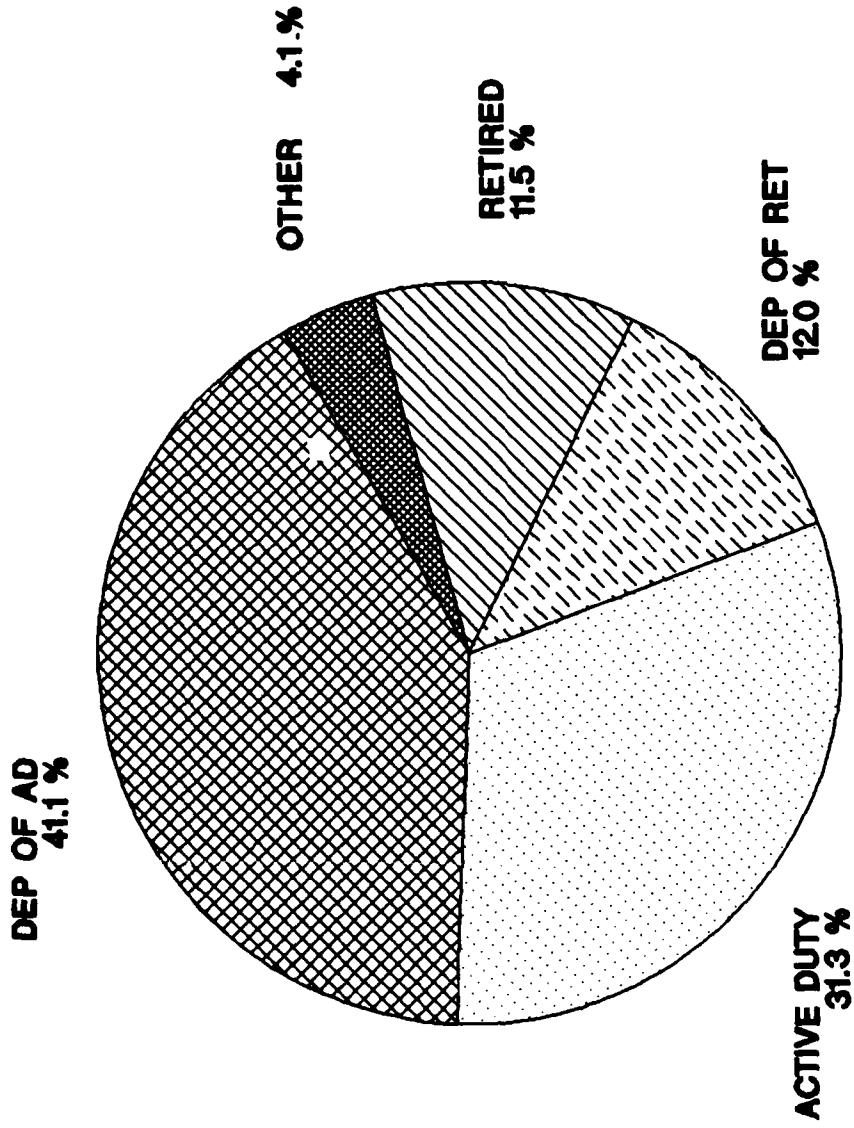


FIGURE 2.1

TABLE 2.2
DEPARTMENT OF DEFENSE
SELECTED DATA CONCERNING MEDICAL CARE
PROVIDED AT FIXED MILITARY FACILITIES
FOR QUARTER ENDING
JUNE 1986

ADMISSIONS - UNITED STATES		DOD TOTAL	ARMY FACILITIES	NAVY FACILITIES	AIR FORCE FACILITIES
10.	NUMBER OF ADMISSIONS	- TOTAL	83,847	45,440	65,391
11.	ADMISSIONS OF US ACTIVE DUTY UNIFORMED PERSONNEL	- TOTAL	23,843	17,995	16,578
	A. MILITARY	- TOTAL	23,713	17,745	16,409
	(1) ARMY	22,132	20,721	460	951
	(2) NAVY-MARINE CORPS	19,287	1,529	16,887	891
	(3) AIR FORCE	16,448	1,463	418	14,567
	B. OTHER UNIFORMED PERSONNEL (PHS,CG,NOAA)	- TOTAL	130	250	169
12.	ADMISSIONS OF RETIRED US UNIFORMED PERSONNEL	- TOTAL	12,468	4,975	8,390
	A. ADMISSIONS OF RETIRED MILITARY	- TOTAL	12,391	4,887	8,338
	(1) ARMY	10,850	8,488	792	1,570
	(2) NAVY-MARINE CORPS	5,990	1,383	3,419	1,188
	(3) AIR FORCE	8,776	2,520	676	5,580
	B. ADMISSIONS OF OTHER RETIRED UNIFORMED PERSONNEL (PHS,CG,NOAA)	- TOTAL	77	88	52
13.	ADMISSIONS OF DEPENDENTS OF US ACTIVE DUTY PERSONNEL (PHS,CG,NOAA)	- TOTAL	30,482	16,817	28,334
	A. ARMY	27,755	24,804	727	2,224
	B. NAVY-MARINE CORPS	20,627	2,874	15,446	2,307
	C. AIR FORCE	27,251	2,804	644	23,803
14.	ADMISSIONS OF DEPENDENTS OF RETIRED AND DECEASED US MILITARY PERSONNEL	- TOTAL	11,710	4,780	10,601
	A. ARMY	10,627	7,913	709	2,005
	B. NAVY-MARINE CORPS	6,233	1,347	3,394	1,492
	C. AIR FORCE	10,231	2,450	677	7,104
15.	ADMISSIONS OF DEPENDENTS OF OTHER UNIFORMED PERSONNEL (PHS,CG,NOAA)	- TOTAL	308	373	365
16.	ADMISSIONS OF ALL OTHER BENEFICIARIES	- TOTAL	5,036	500	1,123

TABLE 2.3
DEPARTMENT OF DEFENSE
SELECTED DATA CONCERNING MEDICAL CARE
PROVIDED AT FIXED MILITARY FACILITIES
FOR QUARTER ENDING
JUNE 1986

	ADMISSIONS - OUTSIDE UNITED STATES	DOD TOTAL	ARMY FACILITIES	NAVY FACILITIES	AIR FORCE FACILITIES
10. NUMBER OF ADMISSIONS	- TOTAL	37,510	19,836	6,891	10,783
11. ADMISSIONS OF US ACTIVE DUTY UNIFORMED PERSONNEL	- TOTAL	14,706	7,685	3,121	3,900
A. MILITARY	- TOTAL	14,681	7,684	3,098	3,899
(1) ARMY		7,624	6,955	121	548
(2) NAVY-MARINE CORPS		3,117	142	2,683	292
(3) AIR FORCE		3,940	587	294	3,059
B. OTHER UNIFORMED PERSONNEL (PHS,CG,NOAA)	- TOTAL	25	1	23	1
12. ADMISSIONS OF RETIRED US UNIFORMED PERSONNEL	- TOTAL	812	376	188	248
A. ADMISSIONS OF RETIRED MILITARY		809	376	187	246
(1) ARMY		450	301	79	70
(2) NAVY-MARINE CORPS		147	22	79	46
(3) AIR FORCE		212	53	29	130
B. ADMISSIONS OF OTHER RETIRED UNIFORMED PERSONNEL (PHS,CG,NOAA)	- TOTAL	3	0	1	2
13. ADMISSIONS OF DEPENDENTS OF US ACTIVE DUTY PERSONNEL (PHS,CG,NOAA)	- TOTAL	19,548	10,471	3,111	5,966
A. ARMY		10,062	9,084	201	777
B. NAVY-MARINE CORPS		2,455	1,110	2,073	272
C. AIR FORCE		7,031	1,277	837	4,917
14. ADMISSIONS OF DEPENDENTS OF RETIRED AND DECEASED US MILITARY PERSONNEL	- TOTAL	716	249	221	246
A. ARMY		310	188	86	36
B. NAVY-MARINE CORPS		213	18	113	82
C. AIR FORCE		193	43	22	128
15. ADMISSIONS OF DEPENDENTS OF OTHER UNIFORMED PERSONNEL (PHS,CG,NOAA)	- TOTAL	18	1	10	7
16. ADMISSIONS OF ALL OTHER BENEFICIARIES	- TOTAL	1,710	1,054	240	416

TABLE 3.1
DEPARTMENT OF DEFENSE
SELECTED DATA CONCERNING MEDICAL CARE
PROVIDED AT FIXED MILITARY FACILITIES
FOR QUARTER ENDING
JUNE 1986

OUTPATIENT VISITS - WORLDWIDE		DOD TOTAL	ARMY FACILITIES	NAVY FACILITIES	AIR FORCE FACILITIES
17.	NUMBER OF OUTPATIENT VISITS	- TOTAL	5,209,010	2,981,355	4,045,885
18.	OUTPATIENT VISITS BY US ACTIVE DUTY UNIFORMED PERSONNEL	- TOTAL	2,067,454	1,297,352	1,344,321
A.	MILITARY	- TOTAL	2,061,902	1,283,987	1,339,940
(1)	ARMY		1,956,925	19,227	47,814
(2)	NAVY-MARINE CORPS		48,326	1,247,601	31,669
(3)	AIR FORCE		56,651	17,159	1,260,457
B.	OTHER UNIFORMED PERSONNEL (PHS,CG,NOAA)	- TOTAL	5,552	13,365	4,381
19.	OUTPATIENT VISITS BY RETIRED US UNIFORMED PERSONNEL	- TOTAL	484,565	237,478	412,439
20.	OUTPATIENT VISITS BY DEPENDENTS OF US ACTIVE DUTY UNIFORMED PERSONNEL	- TOTAL	1,653,985	932,207	1,538,738
A.	DEPENDENTS OF MILITARY PERSONNEL	- TOTAL	1,647,592	918,575	1,528,150
(1)	ARMY		1,443,227	34,858	89,899
(2)	NAVY-MARINE CORPS		86,850	853,776	65,321
(3)	AIR FORCE		117,515	29,941	1,372,930
B.	DEPENDENTS OF OTHER UNIFORMED PERSONNEL (PHS,CG,NOAA)	- TOTAL	6,393	13,632	10,588
21.	OUTPATIENT VISITS BY DEPENDENTS OF RETIRED AND DECEASED US UNIFORMED PERSONNEL	- TOTAL	558,867	235,144	618,730
22.	OUTPATIENT VISITS BY ALL OTHER BENEFICIARIES	- TOTAL	444,139	279,174	131,657
23.	NUMBER OF LIVE BIRTHS	- TOTAL	10,537	5,980	9,545

**OUTPATIENT VISITS-PERCENT OF WORLDWIDE TOTAL
QUARTER ENDING JUNE 30, 1986**

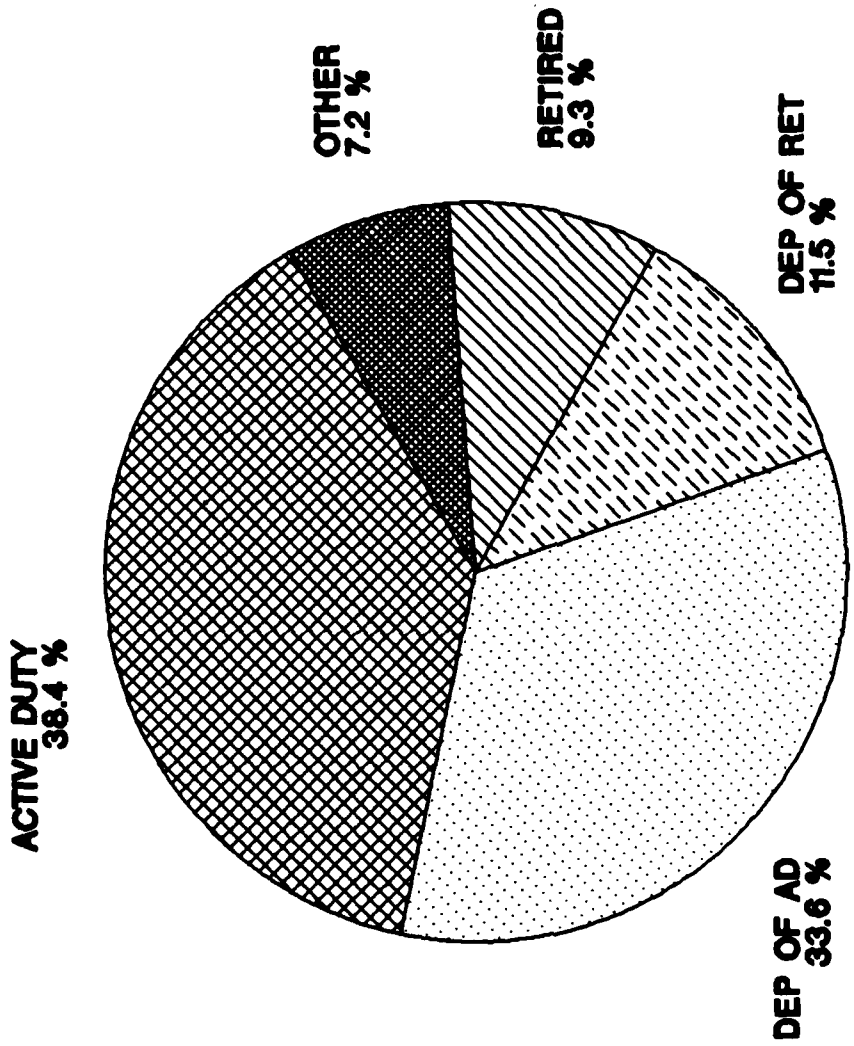


FIGURE 3.1

TABLE 3-2
 DEPARTMENT OF DEFENSE
 SELECTED DATA CONCERNING MEDICAL CARE
 PROVIDED AT FIXED MILITARY FACILITIES
 FOR QUARTER ENDING
 JUNE 1986

-----		-----	-----	-----	-----	-----	-----
OUTPATIENT VISITS - UNITED STATES			DOD	ARMY	NAVY	AIR FORCE	
			TOTAL	FACILITIES	FACILITIES	FACILITIES	
17.	NUMBER OF OUTPATIENT VISITS	- TOTAL	10,270,757	4,144,646	2,689,896	3,436,215	
18.	OUTPATIENT VISITS BY US ACTIVE DUTY UNIFORMED PERSONNEL	- TOTAL	3,747,532	1,526,667	1,154,792	1,066,073	
A.	MILITARY	- TOTAL	3,725,216	1,521,125	1,142,273	1,061,818	
	(1) ARMY		1,481,202	1,434,112	15,902	31,188	
	(2) NAVY-MARINE CORPS		1,184,750	44,435	1,116,069	24,246	
	(3) AIR FORCE		1,059,264	42,578	10,302	1,006,384	
B.	OTHER UNIFORMED PERSONNEL (PHS,CG,NOAA)	- TOTAL	22,316	5,542	12,519	4,255	
19.	OUTPATIENT VISITS BY RETIRED US UNIFORMED PERSONNEL	- TOTAL	1,105,231	471,458	229,766	404,007	
20.	OUTPATIENT VISITS BY DEPENDENTS OF US ACTIVE DUTY UNIFORMED PERSONNEL	- TOTAL	3,282,094	1,205,310	830,344	1,246,440	
A.	DEPENDENTS OF MILITARY PERSONNEL	- TOTAL	3,252,913	1,198,922	817,657	1,236,334	
	(1) ARMY		1,117,526	1,023,877	29,551	64,098	
	(2) NAVY-MARINE CORPS		910,370	82,959	767,823	59,588	
	(3) AIR FORCE		1,225,017	92,086	20,283	1,112,648	
B.	DEPENDENTS OF OTHER UNIFORMED PERSONNEL (PHS,CG,NOAA)	- TOTAL	29,181	6,388	12,687	10,106	
21.	OUTPATIENT VISITS BY DEPENDENTS OF RETIRED AND DECEASED US UNIFORMED PERSONNEL	- TOTAL	1,382,978	546,462	226,693	609,823	
22.	OUTPATIENT VISITS BY ALL OTHER BENEFICIARIES	- TOTAL	752,922	394,749	248,301	109,872	
23.	NUMBER OF LIVE BIRTHS	- TOTAL	20,592	7,608	4,924	8,060	

TABLE 3.3
 DEPARTMENT OF DEFENSE
 SELECTED DATA CONCERNING MEDICAL CARE
 PROVIDED AT FIXED MILITARY FACILITIES
 FOR QUARTER ENDING
 JUNE 1986

	OUTPATIENT VISITS - OUTSIDE UNITED STATES	DOD TOTAL	ARMY FACILITIES	NAVY FACILITIES	AIR FORCE FACILITIES
17. NUMBER OF OUTPATIENT VISITS	- TOTAL	1,965,493	1,064,364	291,459	609,670
18. OUTPATIENT VISITS BY US ACTIVE DUTY UNIFORMED PERSONNEL	- TOTAL	961,595	540,787	142,560	278,248
A. MILITARY	- TOTAL	960,613	540,777	141,714	278,122
(1) ARMY		542,764	522,813	3,325	16,626
(2) NAVY-MARINE CORPS		142,846	3,891	131,532	7,423
(3) AIR FORCE		275,003	14,073	6,857	254,073
B. OTHER UNIFORMED PERSONNEL (PHS, CG, NOAA)	- TOTAL	982	10	846	126
19. OUTPATIENT VISITS BY RETIRED US UNIFORMED PERSONNEL	- TOTAL	29,251	13,107	7,712	8,432
20. OUTPATIENT VISITS BY DEPENDENTS OF US ACTIVE DUTY UNIFORMED PERSONNEL	- TOTAL	842,836	448,675	101,863	292,298
A. DEPENDENTS OF MILITARY PERSONNEL	- TOTAL	841,404	448,670	100,918	291,816
(1) ARMY		450,458	419,350	5,307	25,801
(2) NAVY-MARINE CORPS		95,577	3,891	85,953	5,733
(3) AIR FORCE		295,369	25,429	9,658	260,282
B. DEPENDENTS OF OTHER UNIFORMED PERSONNEL (PHS, CG, NOAA)	- TOTAL	1,432	5	945	482
21. OUTPATIENT VISITS BY DEPENDENTS OF RETIRED AND DECEASED US UNIFORMED PERSONNEL	- TOTAL	29,763	12,405	8,451	8,907
22. OUTPATIENT VISITS BY ALL OTHER BENEFICIARIES	- TOTAL	102,048	49,390	30,873	21,785
23. NUMBER OF LIVE BIRTHS	- TOTAL	5,470	2,929	1,056	1,485

GLOSSARY

Admission. An admission is the act of placing an individual under treatment or observation in a medical center or a hospital. The day of admission is the day on which the medical center or hospital makes a formal acceptance of the patient who is to be provided with room, board, and continuous nursing service in an area of the hospital where patients normally stay at least overnight. If both an admission and discharge occur on the same day, then that day is considered as a day of admission and shall be counted as one occupied bed day. The admission of a newborn is deemed to occur at time of birth.

Live Births. A live birth is the complete expulsion or extraction from its mother of a product of conception, irrespective of the duration of pregnancy which after such separation, breathes or shows any other evidence of life such as beating of the heart, pulsation of the umbilical cord, or definite movement of voluntary muscles, whether or not the umbilical cord has been cut, or the placenta is attached; each such product of such a birth is considered liveborn.

Occupied Bed. A bed assigned as of midnight to a patient, to include a patient on pass or liberty not in excess of 72 hours, and any bassinets assigned to a newborn infant whose mother has been discharged from the hospital. The definition excludes: any bed assigned to a patient subsisting out, on leave, or absent without leave, and any bed occupied by a transient patient.

Operating Bed. A bed that is currently set up and ready in all respects for the care of a patient. It must include supporting space, equipment and staff to operate under normal circumstances. Excluded are nursery bassinets and transient patients' beds.

Operating Bassinet. A bed designed for the care of an infant that is currently set up in the newborn nursery and ready in all respects for use. It must include support space, equipment and staff to operate under normal circumstances. Excluded are infant transporters.

Outpatient Visits. Visits made to each dispensary or separate, organized clinic of a fixed medical treatment facility for medical advice, examination, diagnosis, treatment, evaluation, consultation, or counseling, including visits by military patients who are excused from duty for medical reasons but who have not been admitted for inpatient care in a facility authorized beds for inpatient care and any visits made incident to complete physicals or flight physicals.

END

12-86

DTIC