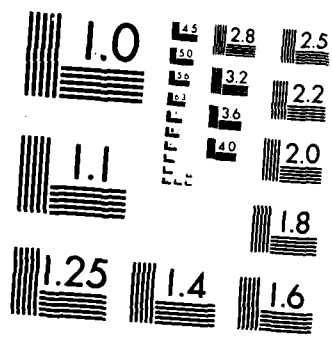


AD-A173 214

ENVIRONMENTAL IMPACT RESEARCH PROGRAM: MANURE SPREADERS 1/1  
SECTION 832 US AR. (U) ARMY ENGINEER WATERWAYS  
EXPERIMENT STATION VICKSBURG MS ENVIR. T B DOERR  
JUL 86 NES/TR/EL-86-47 F/G 2/3 NL

UNCLASSIFIED





MICROCOPY RESOLUTION TEST CHART  
NATIONAL BUREAU OF STANDARDS 1963 A

12

**ENVIRONMENTAL IMPACT  
RESEARCH PROGRAM**

TECHNICAL REPORT EL-86-47

**MANURE SPREADERS**

Section 8.3.2, US ARMY CORPS OF ENGINEERS  
WILDLIFE RESOURCES MANAGEMENT MANUAL

by

Ted B. Doerr

Environmental Laboratory

DEPARTMENT OF THE ARMY

Waterways Experiment Station, Corps of Engineers  
PO Box 631, Vicksburg, Mississippi 39180-0631



**US Army Corps  
of Engineers**

AD-A173 214



DTIC  
ELECTE  
OCT 17 1986  
S D



July 1986  
Final Report

Approved For Public Release. Distribution Unlimited

DTIC FILE COPY

Prepared for DEPARTMENT OF THE ARMY  
US Army Corps of Engineers  
Washington, DC 20314-1000  
Under EIRP Work Unit 31631

86 10 10 188

Unclassified

SECURITY CLASSIFICATION OF THIS PAGE

REPORT DOCUMENTATION PAGE

AD-A17321K

Form Approved OMB No 0704 0188 Exp Date Jun 30 1986

1a REPORT SECURITY CLASSIFICATION <b>Unclassified</b>		1b RESTRICTIVE MARKINGS	
2a SECURITY CLASSIFICATION AUTHORITY		3 DISTRIBUTION/AVAILABILITY OF REPORT  <b>Approved for public release; distribution unlimited.</b>	
2b DECLASSIFICATION/DOWNGRADING SCHEDULE		5 MONITORING ORGANIZATION REPORT NUMBER(S)	
4 PERFORMING ORGANIZATION REPORT NUMBER(S)  <b>Technical Report EL-86-47</b>		5 MONITORING ORGANIZATION REPORT NUMBER(S)	
6a NAME OF PERFORMING ORGANIZATION <b>USAEWES Environmental Laboratory</b>	6b OFFICE SYMBOL (if applicable)	7a NAME OF MONITORING ORGANIZATION	
6c ADDRESS (City, State, and ZIP Code)  <b>PO Box 631 Vicksburg MS 39180-0631</b>		7b ADDRESS (City, State, and ZIP Code)	
8a. NAME OF FUNDING /SPONSORING ORGANIZATION  <b>US Army Corps of Engineers</b>	8b OFFICE SYMBOL (if applicable)	9 PROCUREMENT INSTRUMENT IDENTIFICATION NUMBER	
8c. ADDRESS (City, State, and ZIP Code)  <b>Washington, DC 20314-1000</b>		10 SOURCE OF FUNDING NUMBERS	
		PROGRAM ELEMENT NO	PROJECT NO
		TASK NO	WORK UNIT ACCESSION NO  <b>EIRP 31631</b>
11 TITLE (Include Security Classification) <b>Manure Spreaders: Section 8.3.2, US Army Corps of Engineers Wildlife Resources Management Manual</b>			
12 PERSONAL AUTHOR(S) <b>Doerr, Ted B.</b>			
13a TYPE OF REPORT <b>Final report</b>	13b TIME COVERED FROM _____ TO _____	14 DATE OF REPORT (Year, Month, Day) <b>July 1986</b>	15 PAGE COUNT <b>11</b>
16 SUPPLEMENTARY NOTATION <b>Available from National Technical Information Service, 5285 Port Royal Road, Springfield, VA 22161.</b>			
17 COSATI CODES		18 SUBJECT TERMS (Continue on reverse if necessary and identify by block number)	
FIELD	GROUP	SUB-GROUP	
			<b>Applicators Manure spreaders Spreader</b>
			<b>Conveyer Site reclamation</b>
			<b>Equipment Fertilizer</b>
19. ABSTRACT (Continue on reverse if necessary and identify by block number) An equipment report on manure spreaders is provided as Section 8.3.2 of the US Army Corps of Engineers Wildlife Resources Management Manual. The report is designed to assist the Corps District or project biologist with the selection and use of types of equipment and materials available for habitat development and manipulation. Topics covered include description, operation and maintenance, limitations, and availability.  Manure spreaders are modified single- and dual-axle trailers designed to apply manure and other organic solids to the soil. They are widely used for agriculture and reclamation where soils need more intensive renovation than can be provided by single tillage and inorganic amendments. Management objectives for using manure spreaders are stated, and applications to habitat development projects are discussed. The design and assembly of equipment are described and illustrated, and general specifications are provided. Methods of operation are described, and maintenance and safety requirements are given. Appropriate cautions and limitations are discussed.			
20 DISTRIBUTION/AVAILABILITY OF ABSTRACT <input checked="" type="checkbox"/> UNCLASSIFIED/UNLIMITED <input type="checkbox"/> SAME AS RPT <input type="checkbox"/> DTIC USERS		21 ABSTRACT SECURITY CLASSIFICATION <b>Unclassified</b>	
22a NAME OF RESPONSIBLE INDIVIDUAL		22b TELEPHONE (Include Area Code)	22c OFFICE SYMBOL

PREFACE

This work was sponsored by the Office, Chief of Engineers (OCE), US Army, as part of the Environmental Impact Research Program (EIRP), Work Unit 31631, entitled Management of Corps Lands for Wildlife Resource Improvement. The Technical Monitors for the study were Dr. John Bushman and Mr. Earl Eiker, OCE, and Mr. Dave Mathis, Water Resources Support Center.

This report was prepared by Mr. Ted B. Doerr, Range Science Department, Colorado State University, Fort Collins, Colo. Mr. Doerr was employed by the Environmental Laboratory (EL), US Army Engineer Waterways Experiment Station (WES), under an Intergovernmental Personnel Act contract with Colorado State University during the period this report was prepared. Mr. Chester O. Martin, Team Leader, Wildlife Resources Team, Wetlands and Terrestrial Habitat Group (WTHG), EL, was principal investigator for the work unit. Information on spreaders was provided by personnel from AVCO New Idea Farm Equipment, Coldwater, Ohio; John Deere Company, Moline, Ill.; Schwartz Manufacturing, Lester Prairie, Minn.; and Sperry New Holland, New Holland, Penn. Review and comments were provided by Mr. Martin, WES, and Mr. Larry E. Marcy, Texas A&M University.

The report was prepared under the general supervision of Dr. Hanley K. Smith, Chief, WTHG, EL; Dr. Conrad J. Kirby, Chief, Environmental Resources Division, EL; and Dr. John Harrison, Chief, EL. Dr. Roger T. Saucier, WES, was Program Manager, EIRP. The report was edited by Ms. Jessica S. Ruff of the WES Information Products Division (IPD). Drawings were prepared by Mr. John R. Harris, Scientific Illustrations Section, IPD, under the supervision of Mr. Aubrey W. Stephens, Jr.

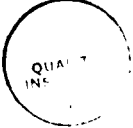
COL Allen F. Grum, USA, was the previous Director of WES. COL Dwayne G. Lee, CE, is the present Commander and Director. Dr. Robert W. Whalin is Technical Director.

This report should be cited as follows:

Doerr, Ted B. 1986. "Manure Spreaders: Section 8.3.2, US Army Corps of Engineers Wildlife Resources Management Manual," Technical Report EL-86-47, US Army Engineer Waterways Experiment Station, Vicksburg, Miss.



Handwritten marks and checkboxes on the right margin.



Availability Codes	
Dist	Avail a d/or special
A-1	

NOTE TO READER

This report is designated as Section 8.3.2 in Chapter 8 -- EQUIPMENT, Part 8.3 -- SOIL AMENDMENT EQUIPMENT, of the US ARMY CORPS OF ENGINEERS WILDLIFE RESOURCES MANAGEMENT MANUAL. Each section of the manual is published as a separate Technical Report but is designed for use as a unit of the manual. For best retrieval, this report should be filed according to section number within Chapter 8.

## MANURE SPREADERS

Section 8.3.2, US ARMY CORPS OF ENGINEERS  
WILDLIFE RESOURCES MANAGEMENT MANUAL

---

DESCRIPTION . . . . .	3	LIMITATIONS . . . . .	5
OPERATION . . . . .	5	AVAILABILITY . . . . .	7
MAINTENANCE . . . . .	5	LITERATURE CITED . . . . .	8

---

Manure spreaders are designed to apply manure and other organic solids to the soil surface. They are rectangular-shaped trailers pulled by a 30- to 100-hp tractor (Larson 1980, Sperry New Holland 1983). Manure and organic matter applications are used to improve soil aeration, water-holding capacity, fertility, and organic matter content to enhance plant establishment and growth. Spreaders are used throughout the United States for agriculture and reclamation where soils need more intensive renovation than can be provided by simple tillage and inorganic amendments.

### DESCRIPTION

Manure spreaders are modified single- and dual-axle trailers with solid sides. The bottom is a conveyor belt (apron) that moves material toward the rear, where the rotary flails beat, break up, and distribute the organic solid (Fig. 1). The bottom flail mechanism is either a large drum with short replaceable teeth or a thin drum or shaft with large replaceable teeth. The optional upper flail is also a thin drum with large replaceable teeth (Schwartz Manufacturing 1983; John Deere Company 1983). Some manure spreaders have a third optional "wide spread" flail to facilitate even spreading of organic material (Sperry New Holland 1983). Flails and conveyors are usually powered by power-take-off (PTO) systems. The John Deere 450 Hydra-push spreader uses a hydraulically powered push board to move organic material to the rear of the trailer. This reduces cleanup and maintenance requirements (John Deere Company 1983).

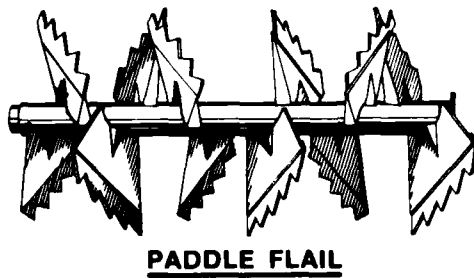
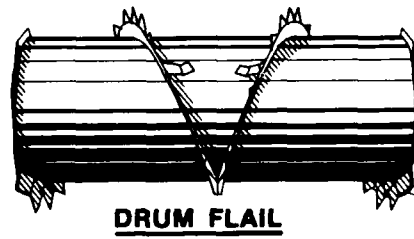
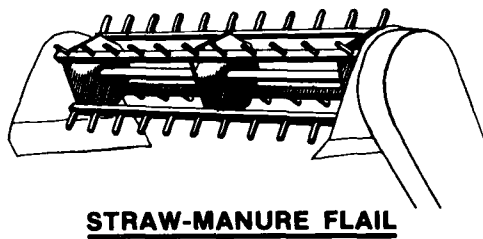
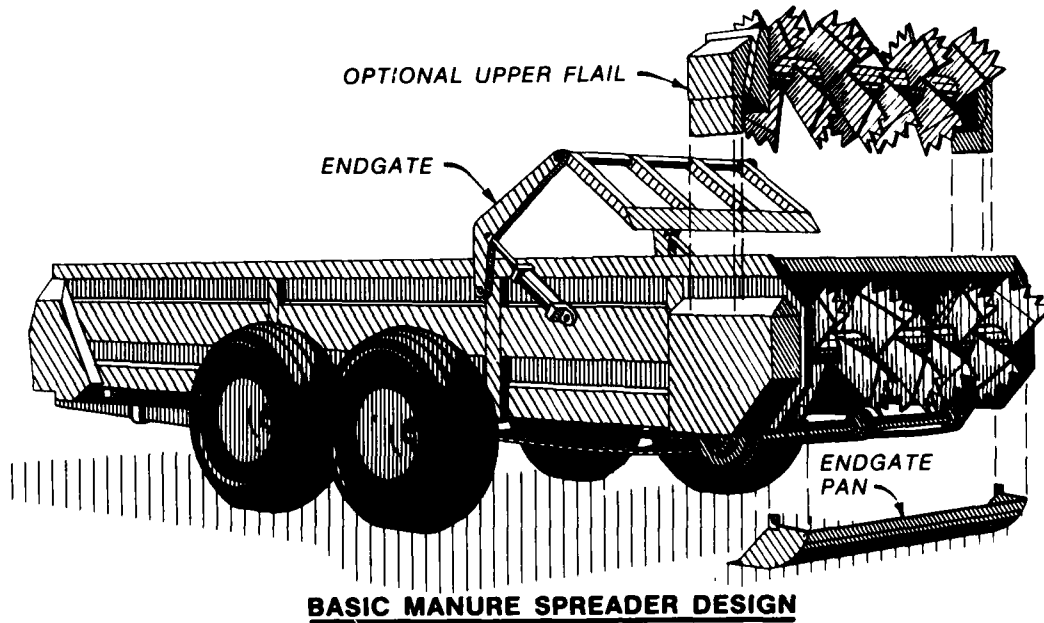


Figure 1. Basic manure spreader design, showing flail types available (adapted from materials provided by John Deere Company, AVCO New Idea, and Sperry New Holland)

Trailers vary in size, and load capacities range from 64 cu ft (Larson 1980) to 570 cu ft (Sperry New Holland 1983). Endgates allow fluid manure and solid organic material to be loaded off-site and transported to the treatment area with minimal material loss. A detachable slurry pan located beneath the bottom flail can be used to improve distribution of more fluid material (Fig. 1). Further specifications are presented in Table 1.

#### OPERATION

The manure spreader is loaded by a front-end loader or conveyor system at a material storage pile. The material is moved to the flails at the rear of the spreader by a conveyor belt or push panel. The application rate is determined by the speed of the tractor and the speed of the conveyor belt moving the material. Spreaders should be calibrated to ensure accurate application rates before use. Most manure spreaders have variable conveyor speeds. Material can either be left on the soil surface, crimped (to keep in place), or incorporated into the soil by rototilling or disking.

Application of organic material with high levels of wood residue may create an imbalance in the carbon-nitrogen ratio. This imbalance will limit plant-available nitrogen. Therefore, higher rates of nitrogen fertilizer may be required than estimates based on soil tests. If sewage sludge is being applied, nutrient levels, cation-exchange capacity, electrical conductivity, and heavy metal levels should be measured prior to use. These tests will show nutrient deficiencies, salt levels, and toxic substances detrimental to vegetation establishment.

#### MAINTENANCE

Manure spreaders should be cleaned after each use. Conveyors, chains, flail teeth, and PTO systems should be checked and repaired following manufacturers' specifications. Periodic lubrication of moving parts is required.

#### LIMITATIONS

Manure spreaders are not adapted for use on areas with rough topography, shallow rocky soils, or brush. Site preparation techniques (brush control, disking, etc.) need to be applied before manure spreaders can be used on these sites. For most projects, rotary spreaders are more useful than manure

Table 1. Specifications for several brands of manure spreaders

Feature	Brand				
	Deere Hydra-push	John Deere	Schwartz	Sperry New Holland	AVCO New Idea
Box capacity					
Struck	142 cu ft	77-245 cu ft	76-203 cu ft	71-340 cu ft	84-356 cu ft
Heaped	286 cu ft	178-471 cu ft	154-368 cu ft	139-570 cu ft	174-596 cu ft
Dimensions (overall)					
Width	7.9 ft	6.8- 9.0 ft	5.7- 8.0 ft	6.5-10.3 ft	7.3-10.7 ft
Length	19.3 ft	16.6-24.6 ft	15.6-23.2 ft	14.7-26.3 ft	16.0-24.8 ft
Height	4.4 ft	3.8- 4.4 ft	3.7- 5.8 ft	3.8- 6.9 ft	4.7- 6.8 ft
Conveyor speed settings	multiple	1-3	2 or 7	2 plus	1 or 5
Operation speed	5-6 mph	5-6 mph	3-6 mph	5 mph	5 mph
Power requirements	60 hp	50-80+ mph	30-85 hp	20-135 hp	40-125 hp
Attachments	Upper flail Endgate Endgate pan	Upper flail Endgate Endgate pan Flail shield	Upper flail Endgate Endgate pan	Upper flail Endgate Endgate pan "Wide spread" flail	Upper flail Endgate Endgate pan

spreaders unless the site requires organic amendments to restore productivity; large quantities of organic material must also be available.

#### AVAILABILITY

Manure spreaders and associated equipment are available from the following retailers:

AVCO  
New Idea Farm Equipment  
420 S. First Street  
Coldwater, Ohio 45828

John Deere Company  
John Deere Road  
Moline, Illinois 61265

Ford Tractor Operations  
2500 E. Maple Road  
Troy, Michigan 48024

Gehl Company  
143 E. Water Street  
West Bend, Wisconsin 53095

International Harvester  
Agricultural Equipment Div.  
401 N. Michigan Avenue  
Chicago, Illinois 60611

Schultz Manufacturing Company  
P. O. Box 388  
Waterloo, Iowa 50704

Schwartz Manufacturing  
P. O. Box 248  
Lester Prairie, Minnesota 55354

Sperry New Holland  
500 Diller Avenue  
New Holland, Pennsylvania 17557

LITERATURE CITED

- John Deere Company. 1983. Loaders, spreaders, and rear blades. Specification sheet, Moline, Ill. 43 pp.
- Larson, J. E. 1980. Revegetation equipment catalogue. USDA For. Serv. Equipment Development Center, Catalogue No. 8042 2501. 198 pp.
- Schwartz Manufacturing. 1983. Manure spreaders. Specification sheet. Lester Prairie, Minn. 5 pp.
- Sperry New Holland. 1983. Box spreaders. Specification sheet. New Holland, Penn. 5 pp.

END

12-86

DTIC