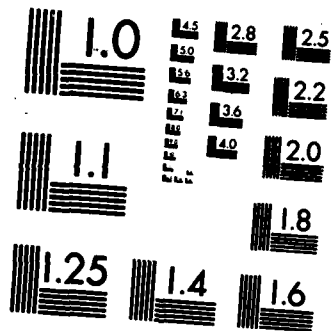


AD-A173 445 REORGANIZATION OF RDT&E WITHIN DMA(U) DEFENSE MAPPING 1/1
AGENCY WASHINGTON DC R A BERG 10 OCT 86

UNCLASSIFIED

F/G 5/1 NL





MICROCOPY RESOLUTION TEST CHART
 NATIONAL BUREAU OF STANDARDS-1963-A

10/10/86

1

AD-A173 445

REORGANIZATION OF RDT&E WITHIN DMA

Dr. Richard A. Berg
Defense Mapping Agency
Washington, D.C. 20305-3000

DTIC
ELECTE
OCT 27 1986
S D

ABSTRACT

DMA has recently made organizational changes in order to be more responsive to the Agency needs for research, development, engineering, acquisition and integrated logistics planning. A reorganization of the HQ DMA R&D staff and functions, together with the formation of a new DMA component, are the changes which have been initiated. The new DMA component, the Development, Engineering and Support Center (DESC), will consolidate and focus DMA's efforts in these vital areas.

BACKGROUND

DMA faces significant challenges in the future due to changes in technology and evolving systems requiring MC&G support. A mandatory conversion program has been underway since 1982. In the early 1990's new production systems, which will take advantage of digital technology, will be installed at the DMA production centers. The development of a modernized DMA production environment is a formidable development task, and it must be followed by extensive transition engineering and integration into existing and new facilities. Planning for maintenance of hardware and software for these new systems must begin early enough to ensure a full operational capability. Strict configuration control must be exercised over existing and interim systems to ensure that newly developed systems will integrate properly.

With respect to MC&G support, advanced systems are often approved for development without consideration to the volume, content or accuracy of MC&G data necessary to support system operations. Contractors and Military Department planners alike presume that DMA already has available MC&G data in unlimited quantity at extremely high resolutions.

It is evident that for DMA to be responsive to its changing environment and to ensure success of the R&D program, organizational changes are necessary. Development is

DTIC FILE COPY

DISTRIBUTION STATEMENT A
Approved for public release;
Distribution Unlimited

36 10 27 064

REPORT DOCUMENTATION PAGE

Form Approved
OMB No. 0704-0188
Exp. Date: Jun 30, 1986

1a. REPORT SECURITY CLASSIFICATION Unclassified		1b. RESTRICTIVE MARKINGS N/A	
2a. SECURITY CLASSIFICATION AUTHORITY N/A		3. DISTRIBUTION/AVAILABILITY OF REPORT Approved for public release; distribution unlimited	
2b. DECLASSIFICATION/DOWNGRADING SCHEDULE N/A			
4. PERFORMING ORGANIZATION REPORT NUMBER(S) N/A		5. MONITORING ORGANIZATION REPORT NUMBER(S) N/A	
6a. NAME OF PERFORMING ORGANIZATION Defense Mapping Agency	6b. OFFICE SYMBOL (if applicable) DMA RET	7a. NAME OF MONITORING ORGANIZATION N/A	
6c. ADDRESS (City, State, and ZIP Code) Washington, D.C. 20305-3000		7b. ADDRESS (City, State, and ZIP Code) N/A	
8a. NAME OF FUNDING/SPONSORING ORGANIZATION Defense Mapping Agency	8b. OFFICE SYMBOL (if applicable) RET	9. PROCUREMENT INSTRUMENT IDENTIFICATION NUMBER N/A	
8c. ADDRESS (City, State, and ZIP Code) Washington, D.C. 20305-3000		10. SOURCE OF FUNDING NUMBERS	
		PROGRAM ELEMENT NO. N/A	PROJECT NO. N/A
		TASK NO. N/A	WORK UNIT ACCESSION NO. N/A
11. TITLE (Include Security Classification) Reorganization of RDT&E Within DMA			
12. PERSONAL AUTHOR(S) Dr. Richard A. Berg			
13a. TYPE OF REPORT Final	13b. TIME COVERED FROM _____ TO _____	14. DATE OF REPORT (Year, Month, Day)	15. PAGE COUNT
16. SUPPLEMENTARY NOTATION Presentation at 1986 MC&G Conference, 8 October 1986.			
17. COSATI CODES		18. SUBJECT TERMS (Continue on reverse if necessary and identify by block number)	
FIELD	GROUP	SUB-GROUP	
		Modernization program. Research, development, engineering, acquisition and integrated logistics planning. Configuration control program. (OVER).	
19. ABSTRACT (Continue on reverse if necessary and identify by block number)			
DMA has recently made organizational changes in order to be more responsive to the Agency needs for research, development, engineering, acquisition and integrated logistics planning. A reorganization of the HQ DMA R&D staff and functions, together with the formation of a new DMA component, are the changes which have been initiated. The new DMA component, the Development, Engineering and Support Center (DESC), will consolidate and focus DMA's efforts in these vital areas.			
20. DISTRIBUTION/AVAILABILITY OF ABSTRACT <input checked="" type="checkbox"/> UNCLASSIFIED/UNLIMITED <input type="checkbox"/> SAME AS RPT. <input type="checkbox"/> DTIC USERS		21. ABSTRACT SECURITY CLASSIFICATION Unclassified	
22a. NAME OF RESPONSIBLE INDIVIDUAL Dr. Richard A. Berg		22b. TELEPHONE (Include Area Code) 202-653-1439	22c. OFFICE SYMBOL HQ DMA/RET

18. SUBJECT TERMS: (Continued)

Hardware and software maintenance program. ADP and investment procurement program. RDT&E.

a. Analyzing advanced system requirements - This is a critical area that needs immediate attention. DMA will maintain close liaison with the Military Departments to promote information exchange and understand sooner the MC&G requirements for advanced systems. To ensure proper liaison DMA will have senior military or civilian personnel assigned to the offices of the Assistant Secretaries for R&D of the Military Departments, the office of the Under Secretary of Defense for Research and Engineering, the Strategic Defense Initiative Office and possibly some Unified and Specified Command R&D offices. This close working relationship is essential to early recognition of MC&G requirements during the concept definition phase of advanced systems.

b. Establishing policy, plans and program review for:

1. The DMA RDT&E program, including all aspects of modernization.
2. Procurement of mission equipment and ADP.
3. Agency-wide engineering support.
4. Technical education and training.
5. Control of system changes throughout the agency.

c. Executing oversight of the Military Departments' R&D in MC&G - DMA must coordinate the efforts of the Military Department R&D organizations to minimize redundant MC&G research and to focus maximum attention to the highest priority problems.

DEVELOPMENT, ENGINEERING AND SUPPORT CENTER

The Development, Engineering and Support Center (DESC) is a new component of DMA consolidating all RDT&E, engineering, acquisition and logistics planning functions in DMA. The nucleus of DESC is the former Special Program Office for Exploitation and Modernization (SPOEM), which directed the Agency's modernization program. The DESC will perform the detailed management of all DMA resources and programs involving research and development, engineering, integrated logistics planning, major production systems acquisition and configuration management. DESC will coordinate these activities among all the DMA components and with HQ DMA/RE.

The DESC will have responsibility for these functions:

a. Formulating and executing all DMA R&D programs - This includes the modernization program as well as follow-on efforts. DESC will plan and manage all 6.2 - 6.4 RDT&E projects and advanced systems development activities. To ensure consistency and standardization in development of new or improved production systems, DESC will operate the developmental configuration control board. Support to oversight of the total DoD MC&G R&D program will also be performed by DESC.

b. Providing Agency wide engineering support - DESC will be responsible for planning and executing changes to the DMA modernized production system. The engineering for transition and integration is an important part of this function. DESC will manage the Agency's technical engineering resources.

c. Providing operational support - DESC will establish and manage a depot maintenance system for the modernized production system. Hardware and software maintenance for the modernized production system, together with the operational configuration control board, will also be a DESC responsibility.

d. Planning and executing the acquisition program - Acquisition of all R&D, mission technical equipment, mission ADP and hardware/software maintenance for the modernized production system will be centralized at DESC. A dedicated cadre of procurement and engineering professionals will manage the complex acquisitions which are anticipated in the future.

e. Planning and executing integrated logistics support - Integrated logistics support systems planning and facilities planning for the modernized production system will be performed by DESC. This initiates a program of life-cycle management of DMA modernized production system assets.

SUMMARY

In summary, the new structures of the DMA RDT&E organizations are more responsive to Agency needs. There will be an increased focus on all research and development tasks with emphasis on improving coordination and program integration within DMA. The new organizations will also result in closer interaction with the Military Departments to ensure that MC&G requirements of the future are met.

END

12-86

DTIC