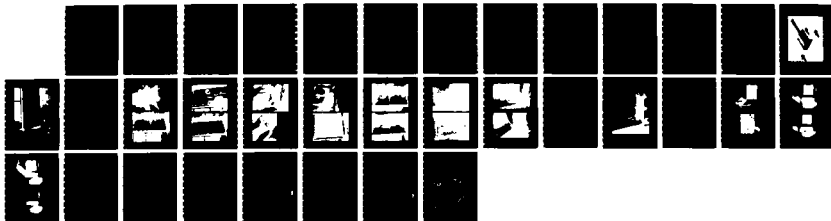


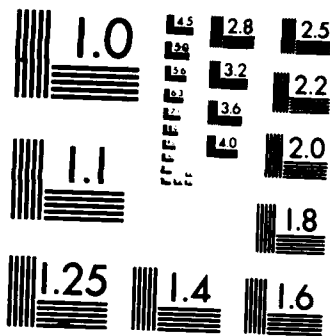
AD-A173 674 CORROSION AND CORROSION CONTROL OF HUSH HOUSE INTERIORS 1/1  
(U) NAVAL CIVIL ENGINEERING LAB PORT HUENEME CA  
J F JENKINS SEP 86 NCEL-TN-1758

UNCLASSIFIED

F/G 11/6

NL





XEROCOPY RESOLUTION TEST CHART  
NATIONAL BUREAU OF STANDARDS-1963-A

# NCEL

Technical Note

September 1986  
By J. F. Jenkins  
Sponsored by Naval Facilities  
Engineering Command

## Corrosion and Corrosion Control of Hush House Interiors

**ABSTRACT** The interior of in-frame gas turbine test facilities, commonly referred to as hush houses, is constructed using galvanized steel box sections filled with fibrous acoustic material and covered with perforated galvanized steel plate. The exposed surfaces of the perforated plate have been found to be subject to corrosion at several hush houses. In this report the severity of the corrosion damage on both the perforated liner plate and the interior of the box sections was evaluated, and the corrosion was found to be not structurally serious at this time. Recommendations for removing trapped water from the interior sections, for preventing the ingress of additional water, and for cosmetically repairing existing corrosion damage were formulated and are presented.

DTIC  
ELECTE  
OCT 29 1986  
S B

DTIC FILE COPY

NAVAL CIVIL ENGINEERING LABORATORY PORT HUENEME CALIFORNIA 93043

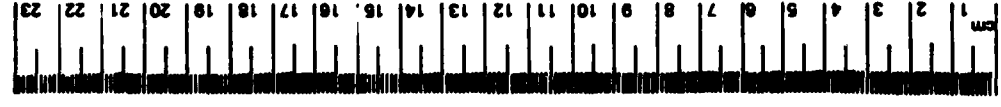
Approved for public release; distribution unlimited.

86 10 28 020

METRIC CONVERSION FACTORS

Approximate Conversions to Metric Measure		Approximate Conversions from Metric Measures						
Symbol	When You Know	Multiply by	To Find	Symbol	When You Know	Multiply by	To Find	Symbol
in	inches	2.5	centimeters	mm	millimeters			in
ft	feet	30	centimeters	cm	centimeters	0.04	inches	in
yd	yards	0.9	meters	m	meters	3.3	feet	ft
mi	miles	1.6	kilometers	km	kilometers	1.1	yards	yd
						0.6	miles	mi
in <sup>2</sup>	square inches	6.5	square centimeters	cm <sup>2</sup>	square centimeters	0.16	square inches	in <sup>2</sup>
ft <sup>2</sup>	square feet	0.09	square meters	m <sup>2</sup>	square meters	1.2	square yards	yd <sup>2</sup>
yd <sup>2</sup>	square yards	0.8	square meters	m <sup>2</sup>	square meters	0.4	square miles	mi <sup>2</sup>
mi <sup>2</sup>	square miles	2.6	square kilometers	km <sup>2</sup>	square kilometers	2.5	acres	
	acres	0.4	hectares	ha	hectares (10,000 m <sup>2</sup> )			
oz	ounces	28	grams	g	grams	0.035	ounces	oz
lb	pounds	0.45	kilograms	kg	kilograms	2.2	pounds	lb
	short tons	0.9	tonnes	t	tonnes (1,000 kg)	1.1	short tons	
	(2,000 lb)							
tblsp	tablespoons	5	milliliters	ml	milliliters	0.03	fluid ounces	fl oz
fl oz	fluid ounces	15	milliliters	ml	liters	2.1	pints	pt
c	cups	30	milliliters	ml	liters	1.06	quarts	qt
pt	pints	0.24	liters	l	liters	0.26	gallons	gal
qt	quarts	0.47	liters	l	cubic meters	36	cubic feet	ft <sup>3</sup>
gal	gallons	0.96	liters	l	cubic meters	1.3	cubic yards	yd <sup>3</sup>
ft <sup>3</sup>	cubic feet	3.8	liters	l				
yd <sup>3</sup>	cubic yards	0.03	cubic meters	m <sup>3</sup>				
		0.76	cubic meters	m <sup>3</sup>				
°F	Fahrenheit temperature	5/9 (after subtracting 32)	Celsius temperature	°C	Celsius temperature	9/5 (then add 32)	Fahrenheit temperature	°F

\*1 in = 2.54 (exactly). For other exact conversions and more detailed tables, see NBS Misc. Publ. 268, Units of Weights and Measures, Price \$2.25, SD Catalog No. C13.10-268.



Unclassified

ADA173674

SECURITY CLASSIFICATION OF THIS PAGE (When Data Entered)

REPORT DOCUMENTATION PAGE		READ INSTRUCTIONS BEFORE COMPLETING FORM
1 REPORT NUMBER TN-1758	2 GOVT ACCESSION NO. DN387290	3 RECIPIENT'S CATALOG NUMBER
4 TITLE (and Subtitle) CORROSION AND CORROSION CONTROL OF HUSH HOUSE INTERIORS		5 TYPE OF REPORT & PERIOD COVERED Final; Mar 1983 - Sep 1985
		6 PERFORMING ORG. REPORT NUMBER
7 AUTHOR(s) J. F. Jenkins		8 CONTRACT OR GRANT NUMBER(s)
9 PERFORMING ORGANIZATION NAME AND ADDRESS NAVAL CIVIL ENGINEERING LABORATORY Port Hueneme, California 93043		10 PROGRAM ELEMENT PROJECT TASK AREA & WORK UNIT NUMBERS YF61.544.091.01.031
11 CONTROLLING OFFICE NAME AND ADDRESS Naval Facilities Engineering Command Alexandria, Virginia 22332		12 REPORT DATE September 1986
		13 NUMBER OF PAGES 28
14 MONITORING AGENCY NAME & ADDRESS (if different from Controlling Office)		15 SECURITY CLASS (of this report) Unclassified
		15a DECLASSIFICATION DOWNGRADING SCHEDULE
16 DISTRIBUTION STATEMENT (of this Report)  Approved for public release; distribution unlimited.		
17 DISTRIBUTION STATEMENT (of the abstract entered in Block 20, if different from Report)		
18 SUPPLEMENTARY NOTES		
19 KEY WORDS (Continue on reverse side if necessary and identify by block number)  Corrosion, Gas turbine engine test facilities, Hush house		
20 ABSTRACT (Continue on reverse side if necessary and identify by block number)  The interior of in-frame gas turbine test facilities, commonly referred to as hush houses, is constructed using galvanized steel box sections filled with fibrous acoustic material and covered with perforated galvanized steel plate. The exposed surfaces of the perforated plate have been found to be subject to corrosion at several hush houses. In this report the severity of the corrosion damage on both the perforated liner plate and the interior of the box sections  continued		

Unclassified

SECURITY CLASSIFICATION OF THIS PAGE(When Data Entered)

20. Continued

was evaluated, and the corrosion was found to be not structurally serious at this time. Recommendations for removing trapped water from the interior sections, for preventing the ingress of additional water, and for cosmetically repairing existing corrosion damage were formulated and are presented.

Library Card

Naval Civil Engineering Laboratory  
CORROSION AND CORROSION CONTROL OF HUSH HOUSE  
INTERIORS (Final), by J. F. Jenkins

TN-1758 28 pp illus September 1986 Unclassified  
1. Corrosion 2. Hush House I. YF61.544.091.01.031

The interior of in-frame gas turbine test facilities, commonly referred to as hush houses, is constructed using galvanized steel box sections filled with fibrous acoustic material and covered with perforated galvanized steel plate. The exposed surfaces of the perforated plate have been found to be subject to corrosion at several hush houses. In this report the severity of the corrosion damage on both the perforated liner plate and the interior of the box sections was evaluated and the corrosion was found to be not structurally serious at this time. Recommendations for removing trapped water from the interior sections, for preventing the ingress of additional water, and for cosmetically repairing existing corrosion damage were formulated and are presented.

Unclassified

SECURITY CLASSIFICATION OF THIS PAGE(When Data Entered)

CONTENTS

	Page
INTRODUCTION . . . . .	1
INITIAL INSPECTION OF HUSH HOUSE INTERIOR . . . . .	1
REMOVAL AND REPLACEMENT OF LINER SECTION . . . . .	2
CONDITION OF TEST SECTION INTERIOR . . . . .	3
LABORATORY EVALUATION OF TEST LINER PANEL . . . . .	3
CONCLUSIONS . . . . .	4
RECOMMENDATIONS . . . . .	5
ACKNOWLEDGMENTS . . . . .	5



Accession For	
NTIS	✓
DTIC	
Unannounced	
Just	
By	
Dist	
Auth	
Dist	
A-1	

## INTRODUCTION

Facilities for the in-frame testing of gas turbine engines, commonly referred to as hush houses (Figure 1), are a relatively new addition to the inventory of Naval shore facilities. Soon after these facilities were introduced to field use, corrosion of the interior perforated galvanized steel liner plates became evident as shown in Figure 2. Several concerns over the potential impact of this corrosion were expressed and can be summarized as follows:

- Is the damage structurally significant?
- Is the corrosion on the interior of the sections more serious than on the exterior?
- Is the corrosion damage a potential source of foreign object damage (FOD) (foreign objects that cause damage to gas turbine engines)?
- What is the cause of the damage?
- Can the damage be arrested?
- Can the appearance of the interior surfaces be restored?

This report is based on the inspection of a typical hush house at the Marine Corps Air Station (MCAS), El Toro and on laboratory investigations performed at the Naval Civil Engineering Laboratory (NCEL).

## INITIAL INSPECTION OF HUSH HOUSE INTERIOR

In June 1983, the exterior of the perforated liner plate was inspected. The corrosion damage was widespread. As shown in Figure 2, it was generally concentrated at the lower portions of the sections and, to a lesser extent, at an area approximately 4 feet above the bottom of the sections. The corrosion damage, which ranged from a light covering of white corrosion products to red rust, was typical of galvanized steel exposed to a rural-type exterior atmosphere. The areas of most severe corrosion damage were adjacent to the firefighting hose and to the hose bibs on the two lateral walls. Above the 8-foot level there were scattered areas with a very thin layer of white corrosion products.

## REMOVAL AND REPLACEMENT OF LINER SECTION

In July 1983, a section of perforated liner plate was removed from the interior of the hush house at MCAS El Toro to inspect the interior of the building section and to obtain a sample of deteriorated liner plate for laboratory analysis. Figure 2 shows the condition of the section prior to removal. Figure 3 shows the location of the section that was removed. The section was selected for two reasons. First, it was one of the most seriously deteriorated sections. Second, the liner sections on the lateral walls were very difficult to remove and replace due to their configuration. In the initial building construction, the wall sections were prefabricated and tilted into place. The restraining beams on the interior of the walls would have interfered with the removal and replacement of the section.

The first step in the removal of the test section was the removal of a vertical angle. The plug welds between the angle and the plate were removed using an air-arc torch, and the angle was cut just above the test section. The angle was then unbolted and removed. This exposed the entire periphery of the test section. The remaining plug and stitch welds attaching the test section were removed using an air-arc torch. Figure 4 shows the test section after all welds were removed.

During the removal of the stitch welds at the bottom of the test section, water leaked from a point where both the liner panel and support section had been cut through. This is shown in Figure 5. Water continued to run from the hole for about 10 minutes.

After all of the welds had been cut, the panel was removed and the acoustic material was exposed and inspected. As shown in Figure 6, the fiberglass material was stained. As shown in Figure 7, the material in the first layer of insulation was inspected for moisture before removal and was found to be dry to the touch. The fiberglass cloth covering the outer section of the acoustic material was, however, water stained. The outer section of the acoustic material was removed and unwrapped. The lower section of the material was significantly deteriorated, and it easily crumbled when handled as shown in Figure 8. The inner section of acoustic material was then removed. Portions of this material adhered to the interior plate of the section (see Figure 9) but were easily removed by light scraping. The acoustic material was retained for future evaluation in a separate work unit.

The panel used to replace the test panel was nearly identical to the test panel. The replacement panel was rectangular, whereas the test panel was trapezoidal. The perforated areas were equal within 1/2 inch. Both panels were hot dip galvanized after perforating. New acoustic material was cut to size and fitted into the test section in two layers. The outer layer was wrapped in new fiberglass cloth prior to installation.

After new acoustic material was installed, the replacement panel was cut to size and welded into place. Areas where the welding damaged the galvanized coating were coated once with TT-P-641 applied with a brush. After the corner angle was bolted into place, it was also coated with TT-P-641. After the panel replacement was completed, the area was cleaned and the hush house was returned to operational status. Figures 10 through 13 show the replacement sequence.

## CONDITION OF TEST SECTION INTERIOR

Figures 14 through 16 show the condition of the interior of the test section. The corrosion damage on the interior of the test section was qualitatively equivalent to the corrosion damage on the exterior of the liner plate, and it was greatest on the lower portions of the section. Figure 17 shows the point of ingress of water that was trapped in the lower support channel of the section. Figure 18 is a sketch of the lower support channel showing where water was trapped. A 1- by 2-inch hole was cut in the top of the support channel to determine how full the section had been. The presence of wet rust on the upper surface of the section interior indicated that the section had been completely filled. However, the loss of material was not significant. The inspection hole was sealed prior to installation of the replacement acoustic material. A second area where water could be trapped and held was found at the midspan support as shown in Figures 19 and 20.

## LABORATORY EVALUATION OF TEST LINER PANEL

The liner panel section that was removed was returned to the Naval Civil Engineering Laboratory for quantitative evaluation of the extent of corrosion damage to the panel and evaluation of cosmetic repair procedures. To quantitatively evaluate the extent of corrosion damage on the panel, the areas displaying various levels of corrosion damage were estimated on both the front (obverse) and back (reverse) of the panel using a transparent grid with 1-inch square sections. Four levels of deterioration were established: none, white corrosion products, tan corrosion products, and red rust. "None" indicated a lack of any evidence of corrosion damage. "White corrosion products" indicated that the outer layer of relatively pure zinc in the outer layers of the galvanized coating was damaged. "Tan corrosion products" indicated that the corrosion damage had extended through the relatively pure zinc outer layers and to the zinc-iron alloy layers adjacent to the original surface of the panel. "Red rust" indicated that the galvanized coating had been consumed and the steel panel had begun to corrode. The results of these measurements are given in Table 1.

To both measure the depth of corrosion damage and to validate the effectiveness of an ultrasonic thickness gage in the measurement of panel thickness from one side, a micrometer and an ultrasonic thickness gage were used to measure the panel thickness at 10 locations where each type of corrosion condition was observed on the front (obverse) side of the panel after the corrosion products were removed with a bristle brush. The results of these measurements are given in Table 2.

Cosmetic repair procedures were developed for removing corrosion products from corroded areas of the liner plate and for recoating the plate to give both corrosion protection and a uniform appearance similar to the original galvanized liner. The procedure and materials selected do not require special skills or equipment and are applicable to in-place perforated liner plates. The coating system selected for evaluation is a standard zinc/zinc oxide organic coating TT-P-641. Hand wire brushing was used to prepare the surface. Where red rust was present the hand wire brushing was augmented by limited hand sanding with 120-grit

silicon-carbide abrasive paper. To evaluate the ability of the coating procedure to coat the outer surface of the perforated panels without either filling the perforations or coating the underlying fiberglass cloth, a test setup (Figure 21) was devised to model the in-place arrangement of the liner plate. The selected coating, a two-component coating consisting of a liquid and a powder, was mixed in accordance with the instructions on the containers prior to application of the paint. The coating was applied using a 3/8-inch nap roller. The roller was loaded with paint, and then the excess paint was removed from the roller by rolling it out into the paint tray. The paint was applied in two thin coats, giving a total dry film thickness of 6 mils (0.006 inch). The coating procedure is illustrated in Figures 22 through 25. As shown in Figure 26, the backing material under the test panel was not contaminated during coating.

#### CONCLUSIONS

Based upon both the field and laboratory studies performed in this task, the following conclusions regarding the liner corrosion problem at MCAS El Toro are offered:

1. At the present time the corrosion of the liner plates and of the interior of the sections is not structurally significant. The thickness loss of the liner plate did not exceed 0.032 inch in the areas of greatest corrosion damage. However, since the thickness of the galvanizing was 0.004 inch on each side, the structural thickness loss did not exceed 0.024 inch or 5%.
2. The condition of the interior of the section was essentially the same as the exterior. With the exception of areas that trap and hold water, the extent of corrosion is effectively the same.
3. At the present time the potential for FOD resulting from the corrosion of the liner plates is very low. The corrosion damage has not proceeded to the point where loss of a section of liner plate or the separation of a complete plate from its supports is likely. The FOD potential from the amounts of corrosion products found on the exterior surfaces of the liner plates is also small.
4. The ultrasonic thickness gage is an effective and accurate tool for measuring perforated liner plates in hush houses.
5. The most likely cause of the corrosion damage observed is the wetting of the interior of the hush house during cleaning. The location of the most serious damage, the condition of the acoustic insulation material, the corrosion of the interior of the test section, and the presence of trapped water all confirm this hypothesis. The corrosion can be arrested by eliminating future wetting of the hush house interior and by draining the water trapped in interior sections.
6. The appearance of the interior surfaces of the hush house can be restored by the in-place coating of the liner panels and other corroded areas with TT-P-641.

## RECOMMENDATIONS

1. Where corrosion is visible on the interior surfaces of the hush house, the extent of damage should be assessed by visual examination and ultrasonic thickness measurements.
2. The potential for wetting of the interior of the hush house during routine operation or cleaning should be eliminated by modifying either the facility or the procedures.
3. As shown in Figure 27, sections where water could be trapped should be drained by drilling drainage holes as noted.
4. The lower sections of the interior should be cleaned and coated as described previously to achieve a uniform finish.

## ACKNOWLEDGMENTS

The author wishes to acknowledge Messrs. Aguilar and Roddenbeck, GySgt Williams of MCAS El Toro, and Mr. Stone of NCEL for their cooperation and assistance in the inspection of the hush house; and Messrs. Gaberson, Kling, Mitchell, and Osgood of NCEL for their efforts in the successful removal and replacement of the test panel.

Table 1. Measurement of Corroded Areas

Rating	Obverse Area		Reverse Area	
	in. <sup>2</sup>	%	in. <sup>2</sup>	%
None	2,338	59	2,445	62
White Corrosion Products	1,149	29	1,028	26
Tan Corrosion Products	356	9	376	9
Red Rust	119	3	113	3
Combined Areas of Tan Corrosion Products and Red Rust	475	12	489	12

Table 2. Thickness Measurements (in.)

Rating	Micrometer			Ultrasonic		
	Minimum	Average	Maximum	Minimum	Average	Maximum
None	0.479	0.481	0.483	0.476	0.477	0.479
White Corrosion Products	0.470	0.474	0.476	0.468	0.476	0.478
Tan Corrosion Products	0.459	0.463	0.469	0.460	0.465	0.469
Red Rust	0.451	0.464	0.473	0.449	0.464	0.474

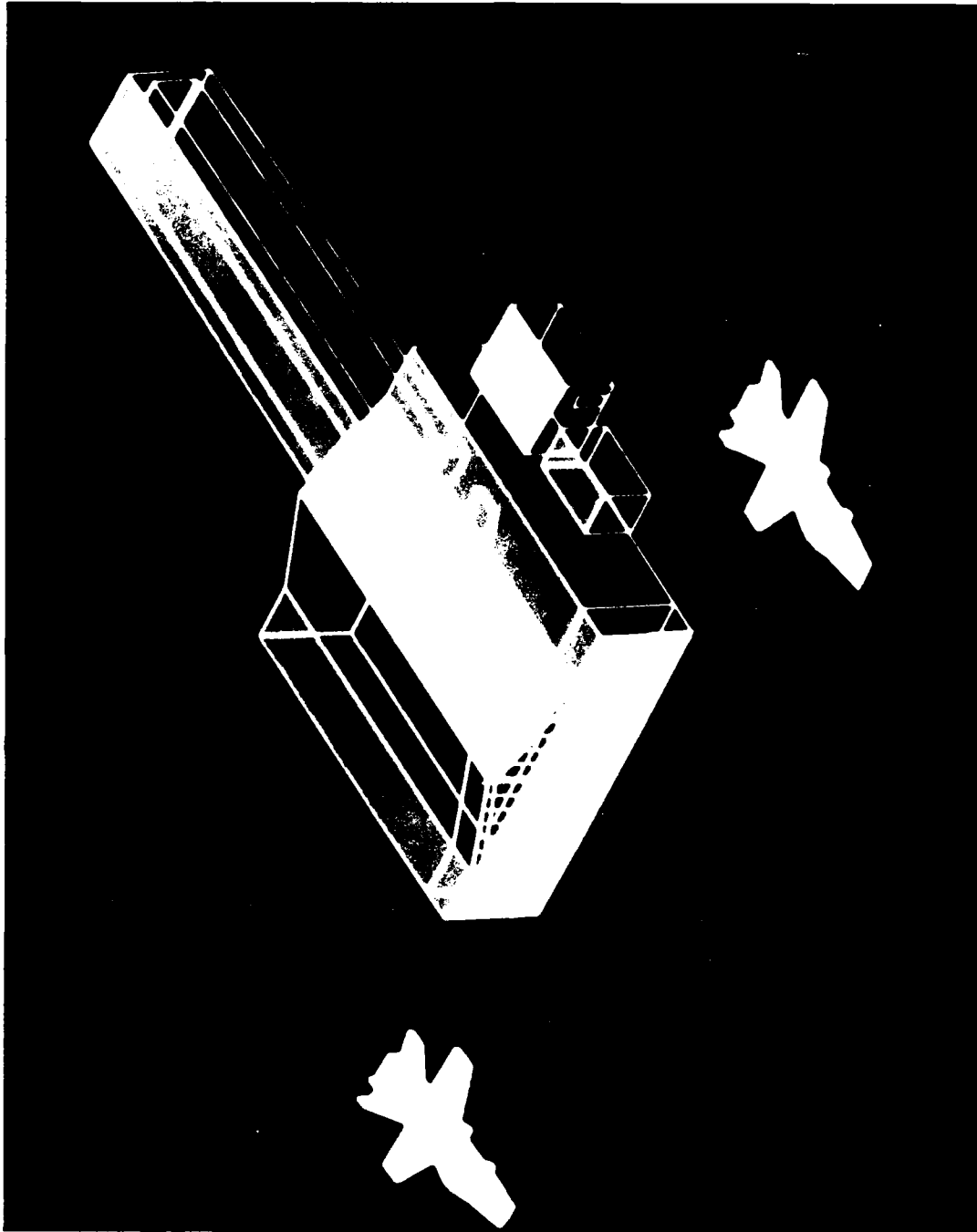


Figure 1. General view of hush house exterior.



Figure 2. Example of liner corrosion at lower section near fire hose.

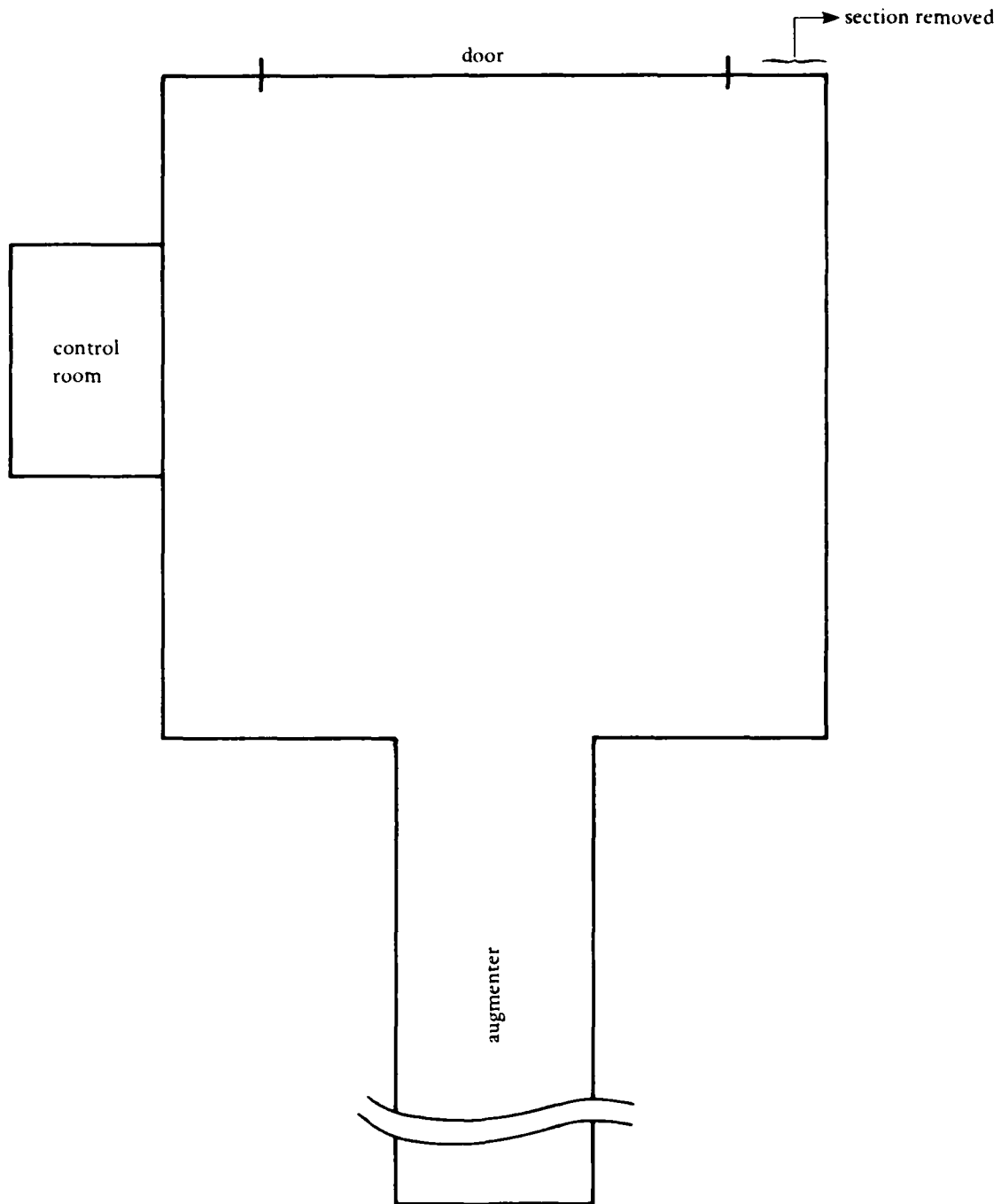


Figure 3. Sketch of the location of the liner plate section removed for analysis.



Figure 5. Water running from interior of section.



Figure 4. Test section with welds removed.

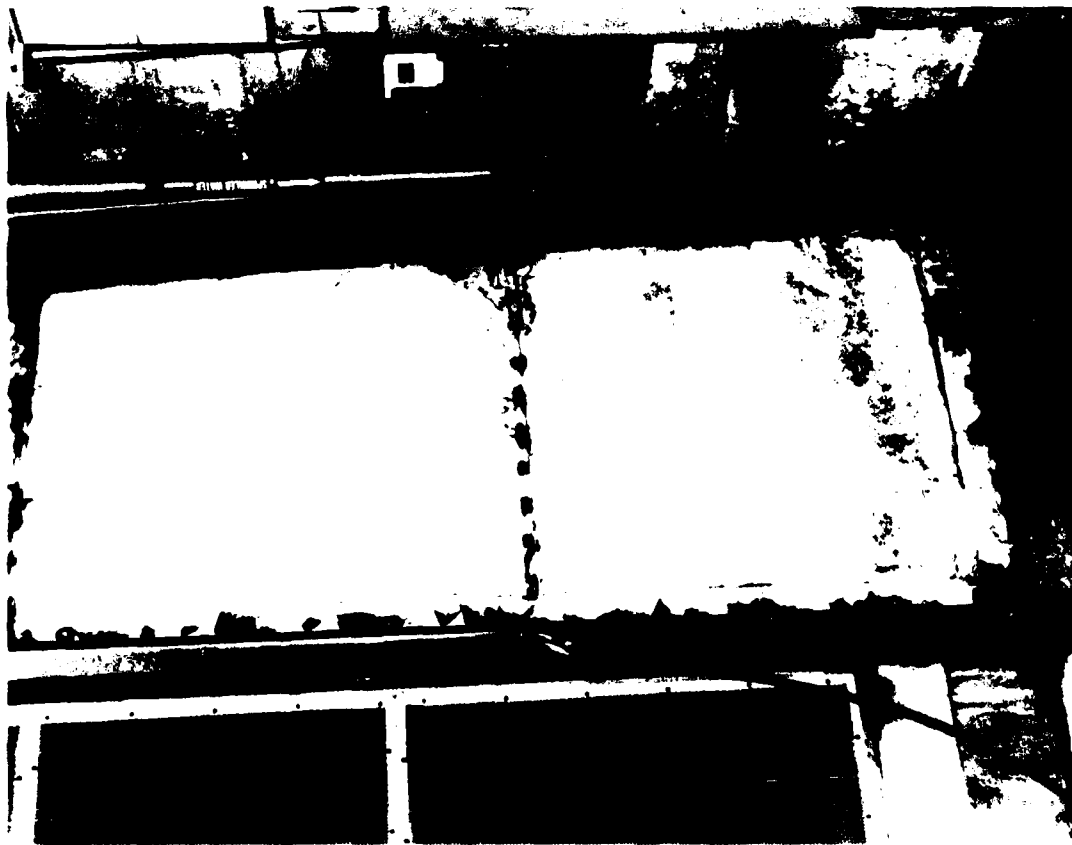


Figure 6. water stains on fiberglass covering.

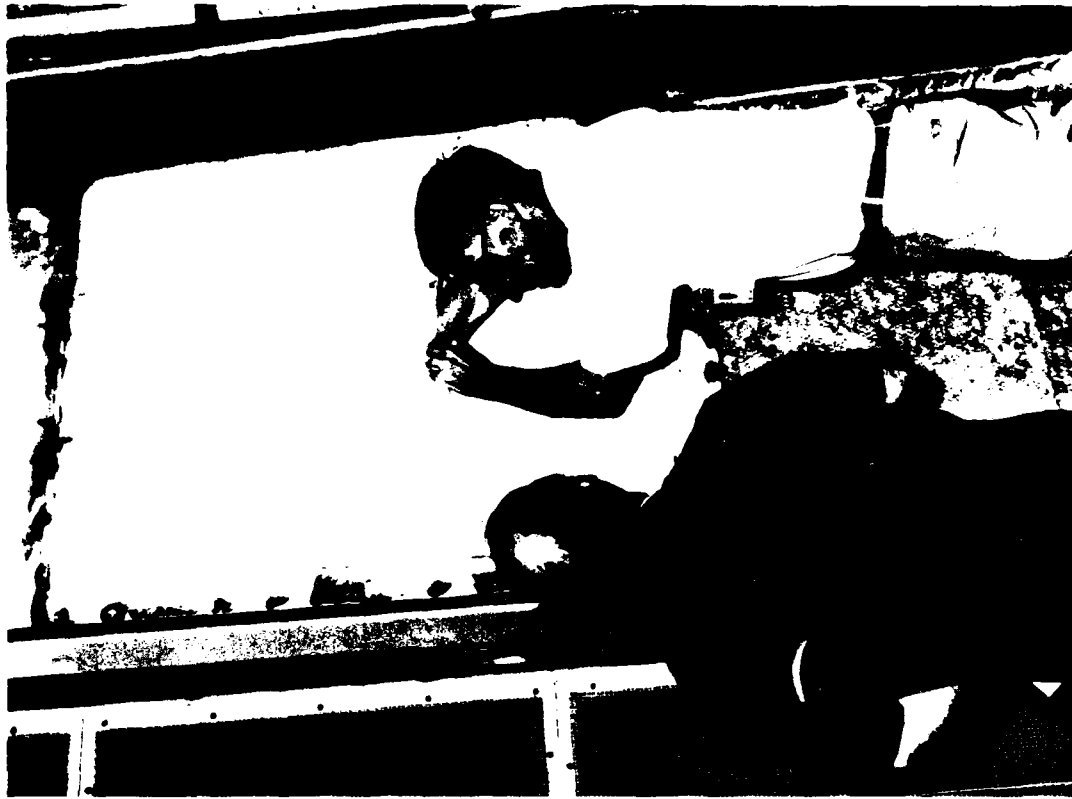


Figure 7. Inspection of acoustic material for moisture.



Figure 8. Acoustic material that crumbled during handling.



Figure 9. Inner layer of acoustic material on inner liner.

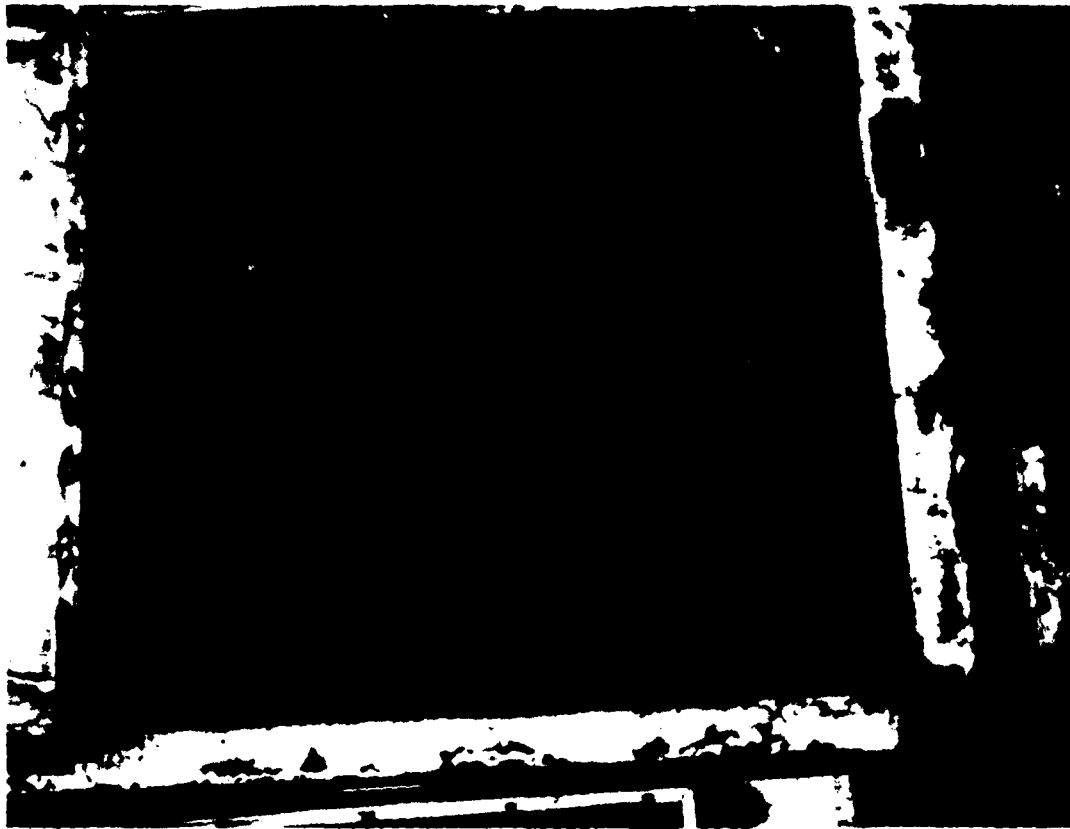


Figure 10. Inner layer of acoustic material in place.



Figure 11. Wrapping outer layer of acoustic insulation with fiberglass cloth.



Figure 13. Completed installation.



Figure 12. Attaching replacement panel.

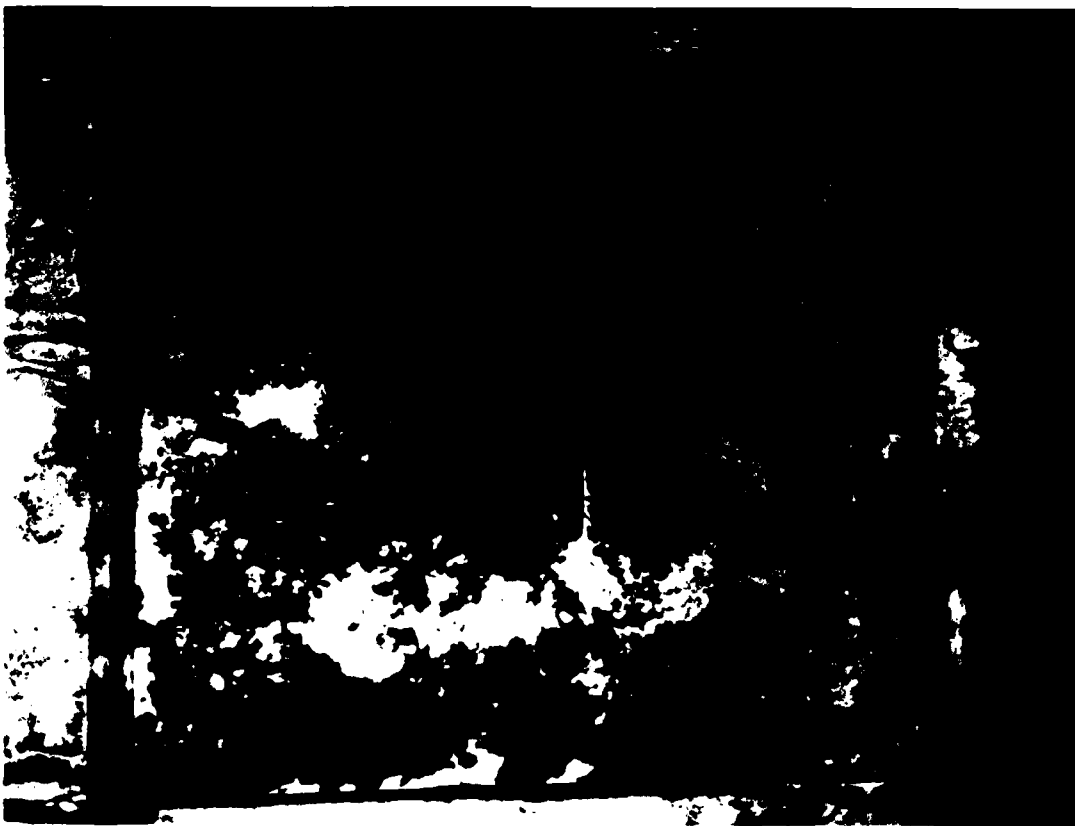


Figure 14. Condition of section interior.



Figure 15. Areas of red rust on interior plate.

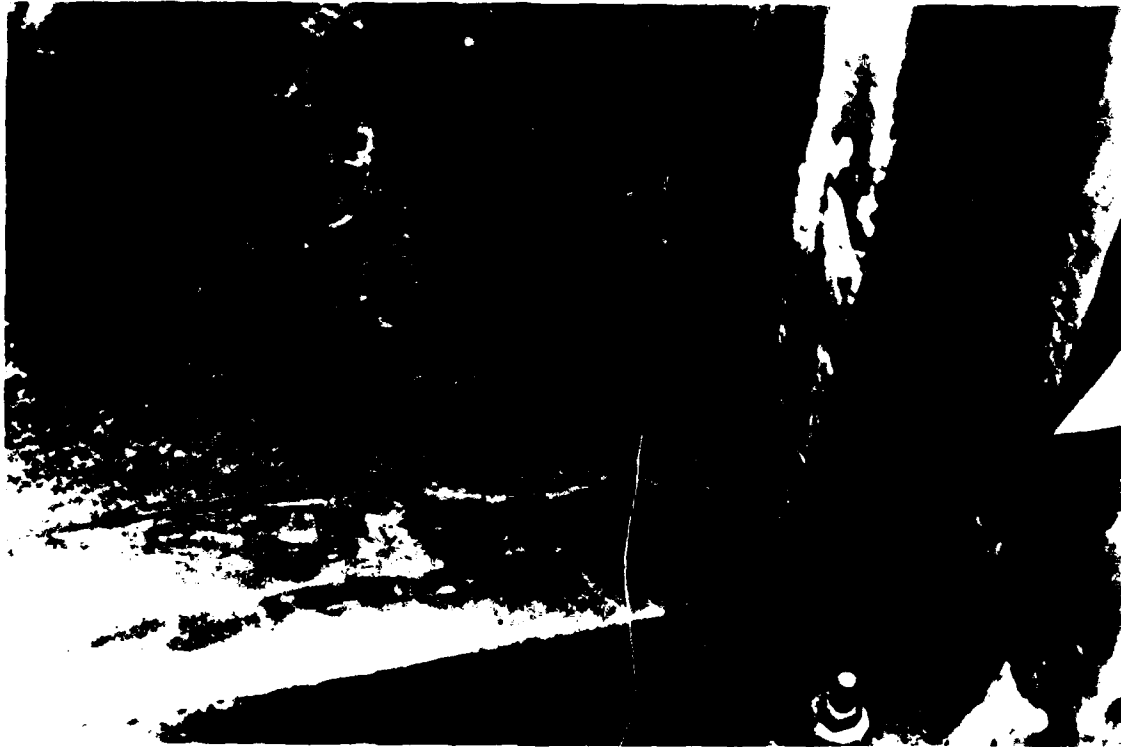


Figure 16. Upper surface of lower support channel showing accumulation of white corrosion products.



Figure 17. Point of water ingress on lower support channel.

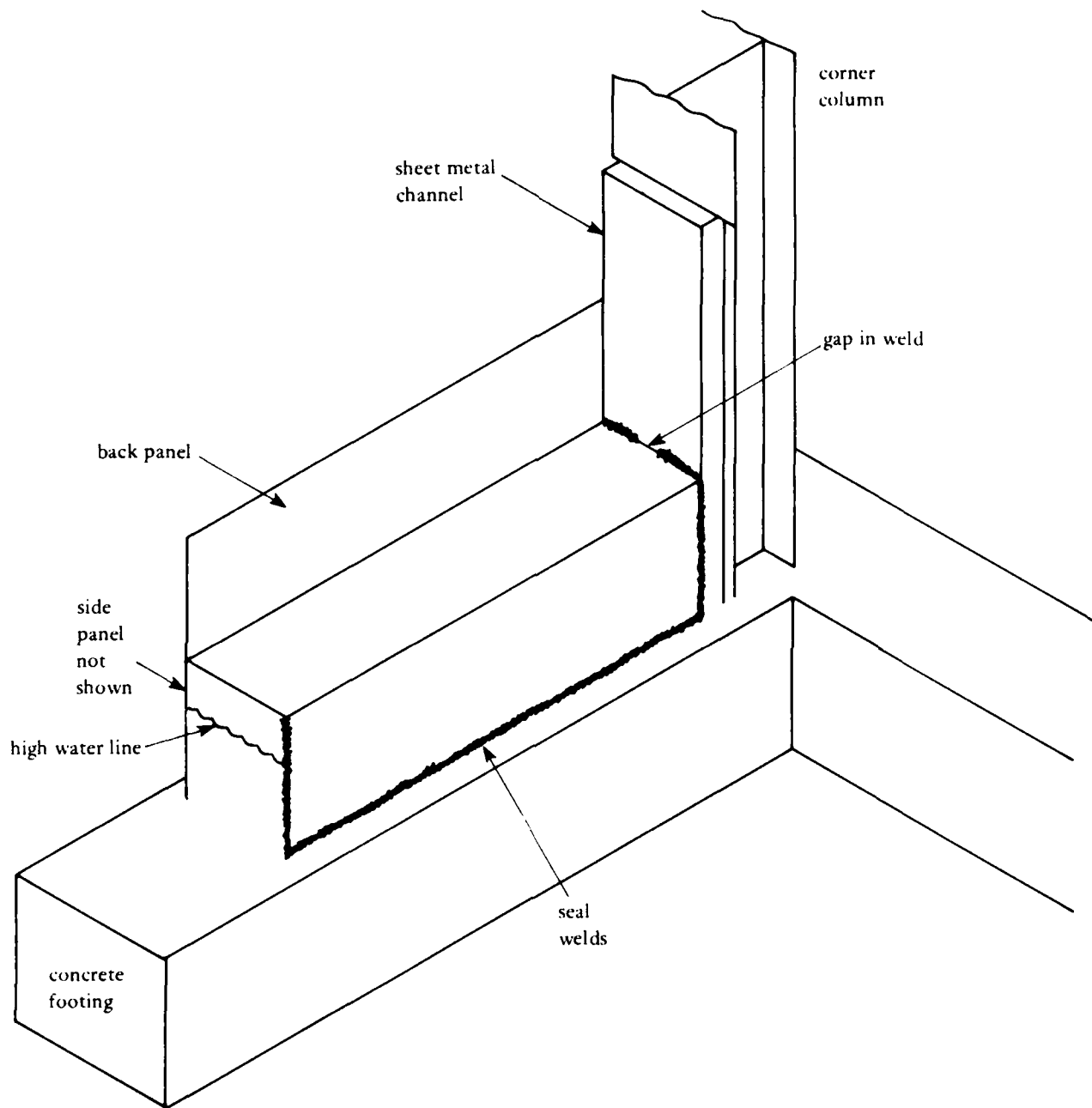


Figure 18. Sketch of lower support channel showing water entrapment mechanism.



Figure 19. Midspan support showing evidence of water entrapment.

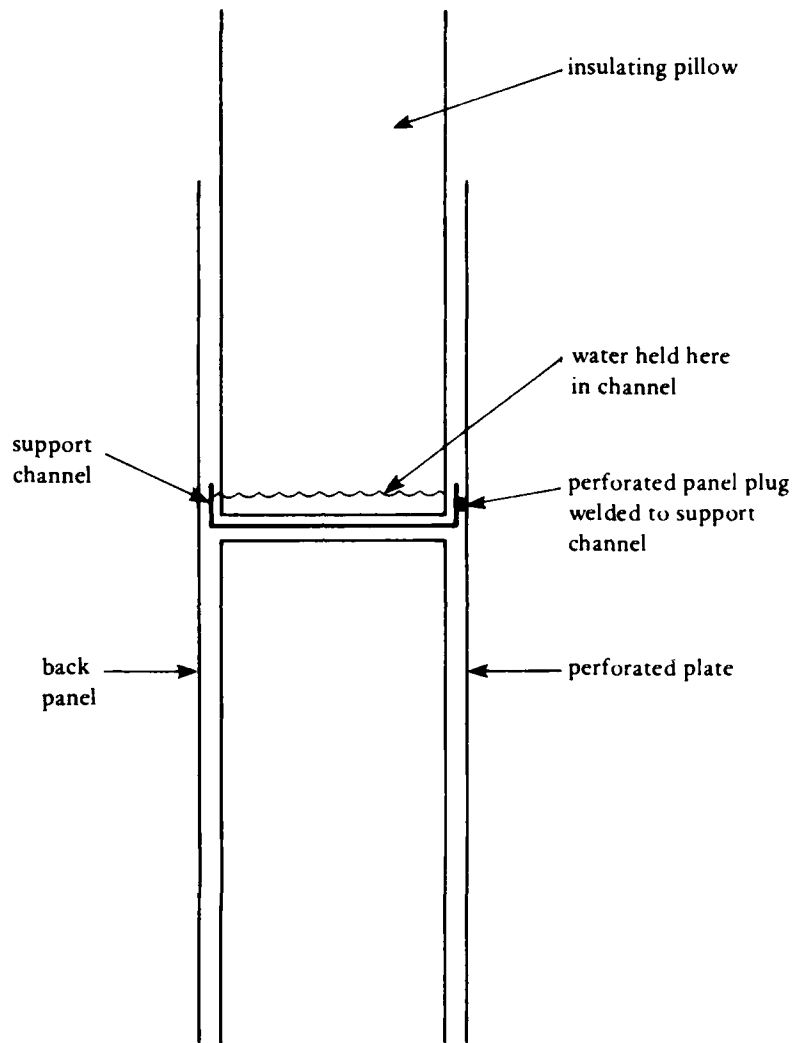


Figure 20. Sketch of midspan support showing water entrapment mechanism.



Figure 21. Setup for evaluation of coating procedure.



Figure 22. Wire brushing the panel.

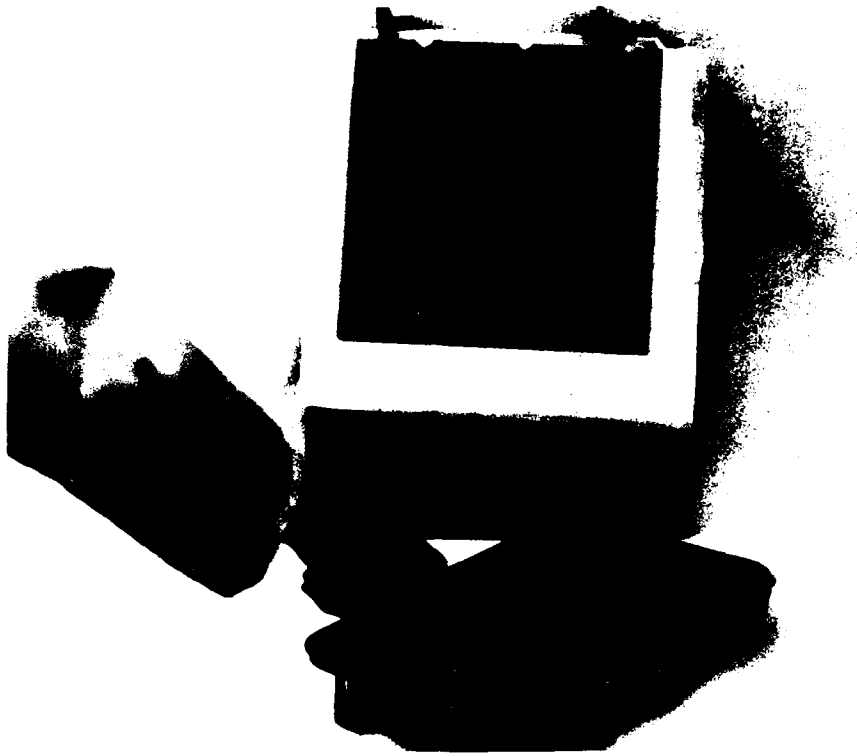


Figure 23. Filling the roller.



Figure 24. Rolling out the excess paint.

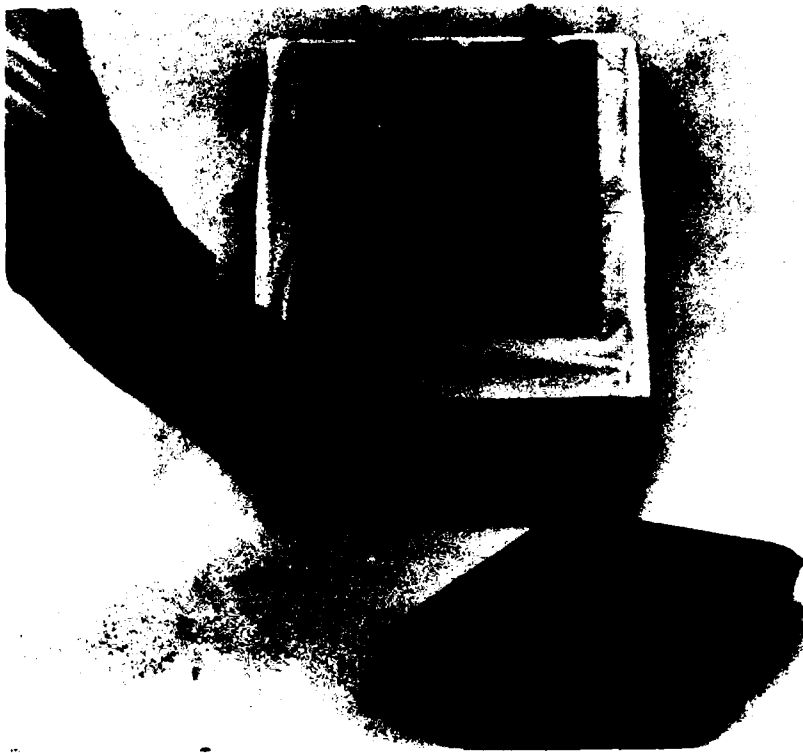


Figure 25. Applying the paint.



Figure 26. Backing material showing absence of paint.

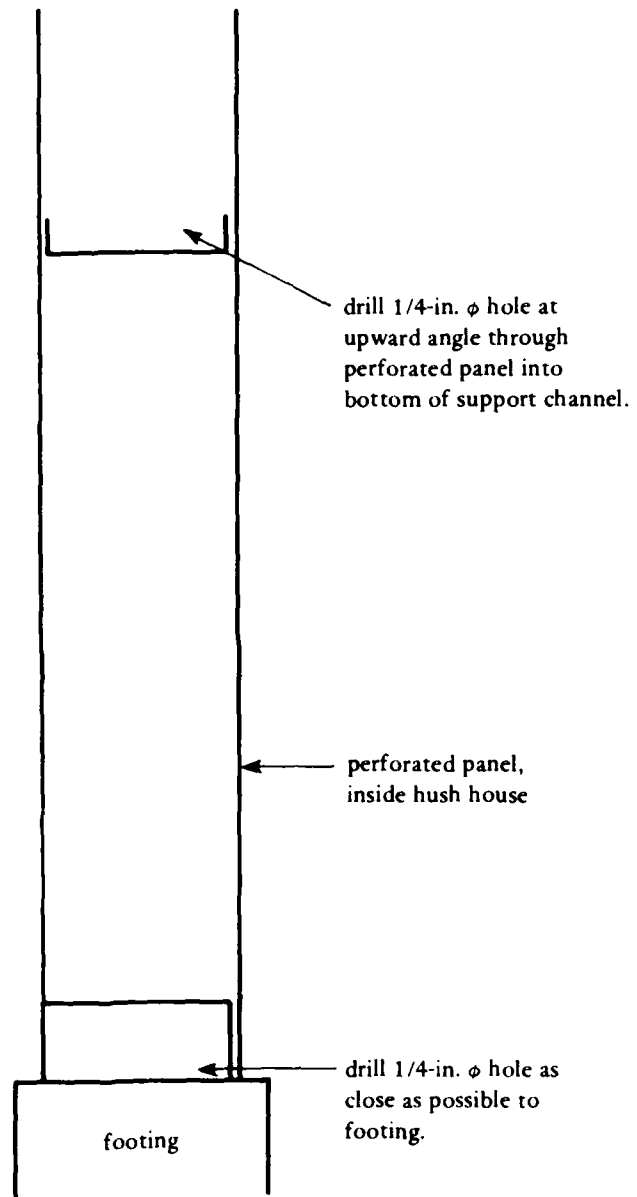


Figure 27. Recommended drainage points.

## DISTRIBUTION LIST

AF ABG DER, Patrick AFB, FL  
AFB AUL LSE 63-465, Maxwell AFB, AL; SAMSO MNND, Norton AFB CA  
AFESC DEB, Tyndall AFB, FL; HQ TST, Tyndall AFB, FL  
ARMY Comm Cmd, Tech Ref Div, Huachuca, AZ; ERADCOM Tech Supp Dir. (DELS-D), Ft Monmouth, NJ  
ARMY ENGR DIST Library, Memphis, TN  
ARMY FESA-EM (Krajewski), Ft Belvoir, VA  
ARMY - CERL Library, Champaign IL  
ARMY DEPOT Letterkenny, Fac Engr (SDSLE-SF), Chambersburg, PA  
ARMY ENG WATERWAYS EXP STA WESGP-E (Green), Vicksburg, MS  
ARMY ENVIRON, HYGIENE AGCY Bio Acous Div, Aberdeen Proving Grnd, MD  
ARMY MTMC MIT-CE, Newport News, VA  
CBC Code 10, Davisville, RI; Code 430, Gullport, MS; PWO, Gullport, MS  
CBU 401, OIC, Great Lakes, IL; 405, OIC, San Diego, CA; 411, OIC, Norfolk, VA; 417, OIC, Oak Harbor, WA  
CNO Code OP-987J, Washington, DC  
COMNAVBEACHGRU ONE, CO, San Diego, CA  
COMOCEANSYSPAC SCE, Pearl Harbor, HI  
DEFFUELSUPPCEN DFSC-OWE, Alexandria VA  
DTIC Alexandria, VA  
DTNSRDC Code 4111 (R. Gierich), Bethesda MD; DET, Code 4120, Annapolis, MD  
ENVIRONMENTAL PROTECTION AGENCY Air Prog Off, Ann Arbor, MI  
FAA CAMI Lib, Oklahoma City, OK  
FCTC LANT, PWO, Virginia Beh, VA  
FMFLANT CEC Offr, Norfolk VA  
GSA Code PCDP, Washington, DC  
MARINE CORPS BASE Code 406, Camp Lejeune, NC  
MCAF Code C144, Quantico, VA  
MCAS Dir, Ops Div, Fac Maint Dept, Cherry Point, NC; PWO, Santa Ana, CA; PWO, Yuma, AZ  
MCDEC Base Maint Offr, Quantico, VA  
MCRD SCE, San Diego CA  
NAF Dir, Engrg Div, PWD, Atsugi, Japan; PWO, Atsugi, Japan  
NAS Code 18300, Lemoore, CA; Code 72E, Willow Grove, PA; Dir, Engrg Div, Meridian, MS; Dir, Maint Control, PWD, South Weymouth, MA; Lead CPO, PWD, Self Help Div, Beeville, TX; P&E (Code 1821H), Miramar, San Diego, CA; PWO, Beeville, TX; PWO, Miramar, San Diego, CA; PWO, Sigonella, Sicily; SCE, Cubi Point, RP; SCE, Norfolk, VA; Whiting Fld, PWO, Milton, FL  
NAVAIRENGCEN Dir, Engrg (Code 182), Lakehurst, NJ; PWO, Lakehurst, NJ  
NAVAIREWORKFAC Code 610, San Diego, CA; Code 612, Jacksonville, FL; Equip Engr Div (Code 61000), Pensacola, FL  
NAVAUDSVCHO Director, Falls Church VA  
NAVAVIONICEN Deputy Dir, PWD (Code D 701), Indianapolis, IN; PW Div, Indianapolis, IN  
NAVCAMS SCE (Code W-60), Wahiawa, HI; SCE, Guam, Mariana Islands  
NAVCOASTSYSCEN Code 2230 (J. Quirk) Panama City, FL; Code 630, Panama City, FL; Code 715 (J. Mittleman) Panama City, FL  
NAVCOMMSTA Dir, Maint Control, PWD, Thurso, UK  
NAVFACENGCEN Code 03, Alexandria, VA  
NAVCOMMSTA PWO, Exmouth, Australia  
NAVCONSTRACEN Code B-1, Port Hueneme, CA  
NAVENVIRHLTHCEN Code 642, Norfolk, VA  
NAVFAC PWO (Code 50), Brawdy Wales, UK  
NAVFACENGCEN Code 04MI, (G. Moy), Alexandria, VA; Code 04M2, Alexandria, VA; Code 0812, Alexandria, VA  
NAVFACENGCEN - CHES DIV, Code 406C, Washington, DC; Code FPO-IPL, Washington, DC; E. Gorman, Washington, DC  
NAVFACENGCEN - LANT DIV, Library, Norfolk, VA  
NAVFACENGCEN - NORTH DIV, Code 04, Philadelphia, PA; Code 04AI, Philadelphia, PA; Code 202.2, Philadelphia, PA  
NAVFACENGCEN - PAC DIV, Library, Pearl Harbor, HI  
NAVFACENGCEN - SOUTH DIV, Code 102, Charleston, SC; Library, Charleston, SC  
NAVFACENGCEN - WEST DIV, Library (Code 04A2.2), San Bruno, CA  
NAVFACENGCEN CONTRACTS DROICC, Lemoore, CA; ROICC, Code 61, Silverdale, WA; ROICC, Point Mugu, CA; ROICC, Twentynine Palms, CA  
NAVHOSP CO, Yokosuka, JA; PWD - Maint Control Div, Philadelphia, PA; PWO, Guam, Mariana Islands

NAVMAG Engr Dir, PWD, Guam, Mariana Islands  
 NAVOCEANSYSCEN Code 964 (Tech Library), San Diego, CA  
 NAVORDMISTESTSTA Ch. Fac Supp Div, White Sands, NM  
 NAVORDSTA Dir, Engr Div, PWD, Indian Head, MD  
 NAVPGSCOL Code 61WL (O. Wilson), Monterey, CA  
 NAVSEASYSCOM Code 05M, Washington, DC; Code 05R12, Washington, DC  
 NAVSECGRUACT PWO, Sabana Seca, PR  
 NAVSECGRUCOM Code G43, Washington, DC  
 NAVSECSTA Code N70, Washington, DC; Dir, Engr, PWD, Washington, DC  
 NAVSHIPREPFAC SCE, Guam  
 NAVSHIPYD Code 450.44, Engr Consv Engr, Charleston, SC; Hd, Maint Control, PWD (Code 420), Vallejo, CA; Library, Portsmouth, NH; PWD (Code 457-HD) Shop 07, Portsmouth, VA; Shop 72, Long Beach, CA  
 NAVSTA A, Sugihara, Pearl Harbor, HI; CO, Brooklyn, NY; Dir, Engr Div, PWD, Guantanamo Bay, Cuba; SCE, Pearl Harbor, HI; Util Engr Offr, Rota, Spain  
 NAVSUPPO Dir, Transp Div, La Maddalena, Italy  
 NAVSURFWPNCEN CO, Dahlgren, VA  
 NAVUSEAWARENGSTA OIC, San Diego, CA  
 NAVWPNCEN Code 24, China Lake, CA; PWO (Code 266), China Lake, CA  
 NAVWPNSFAC Wpns Offr, St. Mawgan, England  
 NAVWPNSTA Code 092, Colts Neck, NJ; Dir, Maint Control, Yorktown, VA  
 NMCB 3, Operations Offr, 40, CO  
 NSC Cheatham Annex, PWO, Williamsburg, VA; SCE, Charleston, SC; Security Offr (Code 02), Pearl Harbor, HI  
 NUSC DET Code 3232 (Varley) New London, CT  
 OFFICE SECRETARY OF DEFENSE ASD, (H&E), Washington, DC  
 PMTC Code 5054-S, Point Mugu, CA  
 PWC Code 101 (Library), Oakland, CA; Code 1013, Oakland, CA; Code 123-C, San Diego, CA; Code 420, Great Lakes, IL; Code 425 (L.N. Kaya, P.E.), Pearl Harbor, HI; Code 500, Norfolk, VA; Code 700, Norfolk, VA; Library (Code 134), Pearl Harbor, HI; Library, Guam, Mariana Islands; Library, Norfolk, VA; Library, Pensacola, FL; Library, Yokosuka JA; Tech Library, Subic Bay, RP  
 SPCC PWO (Code 08X), Mechanicsburg, PA  
 UCT TWO CO, Port Hueneme, CA  
 USAF HOSPITAL SGT Castle AFB, CA  
 USCINC PAC, Code J44, Camp HM Smith, HI  
 USDA For Serv, Equip Dev Cen, San Dimas, CA  
 USS USS FULTON, Code W-3, New York, NY  
 -1 Wpns Offr (Code WRO), Miami, FL  
 ARIZONA STATE UNIVERSITY Design Sci (Kroelinger), Tempe, AZ  
 CLEMSON UNIV, Arch Col (Egan), Clemson, SC  
 IOWA STATE UNIVERSITY Arch Dept (McKrown), Ames, IA  
 LOS ANGELES COUNTY Rd Dept (J Vicelja), Los Angeles, CA  
 PENNSYLVANIA STATE UNIVERSITY Applied Rsch Lab, State College, PA  
 STATE UNIV OF NEW YORK CE Dept (Reinhorn), Buffalo, NY  
 UNIVERSITY OF ILLINOIS Arch Scol (Kim), Champaign, IL  
 UNIVERSITY OF MICHIGAN CE Dept (Richart), Ann Arbor, MI  
 UNIVERSITY OF WASHINGTON App Physics Lab, Seattle, WA; Library, Seattle, WA  
 BABCOCK & WILCOX CO, Tech Lib, Barberton, OH  
 GARD INC, LB Holmes, Niles, IL  
 GRUMMAN AEROSPACE CORP, Tech Info Ctr, Bethpage, NY  
 NUSC DET Library (Code 4533) Newport, RI  
 MC DERMOTT, INC E&M Div, New Orleans, LA  
 TRW SYSTEMS Engr Library, Cleveland, OH  
 UNITED TECHNOLOGIES Hamilton Std Div, Lib, Windsor Locks, CT  
 WESTINGHOUSE ELECTRIC CORP, Library, Pittsburg, PA

## INSTRUCTIONS

The Naval Civil Engineering Laboratory has revised its primary distribution lists. The bottom of the mailing label has several numbers listed. These numbers correspond to numbers assigned to the list of Subject Categories. Numbers on the label corresponding to those on the list indicate the subject category and type of documents you are presently receiving. If you are satisfied, throw this card away (or file it for later reference).

If you want to change what you are presently receiving:

- Delete – mark off number on bottom of label.
- Add – circle number on list.
- Remove my name from all your lists – check box on list.
- Change my address – line out incorrect line and write in correction (**ATTACH MAILING LABEL**).
- Number of copies should be entered after the title of the subject categories you select.

Fold on line below and drop in the mail.

Note: Numbers on label but not listed on questionnaire are for NCEL use only, please ignore them.

Fold on line and staple.

### DEPARTMENT OF THE NAVY

NAVAL CIVIL ENGINEERING LABORATORY  
PORT HUENEME, CALIFORNIA 93043

#### OFFICIAL BUSINESS

PENALTY FOR PRIVATE USE, \$300  
1 IND-NCEL-2700/4 (REV. 12-79)  
0020-LL-L70-0044

POSTAGE AND FEES PAID  
DEPARTMENT OF THE NAVY  
DOD-316



Commanding Officer  
Code L14  
Naval Civil Engineering Laboratory  
Port Hueneme, California 93043

## DISTRIBUTION QUESTIONNAIRE

The Naval Civil Engineering Laboratory is revising its primary distribution lists.

### SUBJECT CATEGORIES

#### 1 SHORE FACILITIES

- 2 Construction methods and materials (including corrosion control, coatings)
- 3 Waterfront structures (maintenance/deterioration control)
- 4 Utilities (including power conditioning)
- 5 Explosives safety
- 6 Construction equipment and machinery
- 7 Fire prevention and control
- 8 Antenna technology
- 9 Structural analysis and design (including numerical and computer techniques)
- 10 Protective construction (including hardened shelters, shock and vibration studies)
- 11 Soil/rock mechanics
- 13 BEQ
- 14 Airfields and pavements
- 15 **ADVANCED BASE AND AMPHIBIOUS FACILITIES**
- 16 Base facilities (including shelters, power generation, water supplies)
- 17 Expedient roads/airfields/bridges
- 18 Amphibious operations (including breakwaters, wave forces)
- 19 Over-the-Beach operations (including containerization, materiel transfer, lighterage and cranes)
- 20 POL storage, transfer and distribution
- 24 **POLAR ENGINEERING**
- 24 Same as Advanced Base and Amphibious Facilities, except limited to cold-region environments

#### 28 ENERGY/POWER GENERATION

- 29 Thermal conservation (thermal engineering of buildings, HVAC systems, energy loss measurement, power generation)
- 30 Controls and electrical conservation (electrical systems, energy monitoring and control systems)
- 31 Fuel flexibility (liquid fuels, coal utilization, energy from solid waste)
- 32 Alternate energy source (geothermal power, photovoltaic power systems, solar systems, wind systems, energy storage systems)
- 33 Site data and systems integration (energy resource data, energy consumption data, integrating energy systems)
- 34 **ENVIRONMENTAL PROTECTION**
- 35 Solid waste management
- 36 Hazardous/toxic materials management
- 37 Wastewater management and sanitary engineering
- 38 Oil pollution removal and recovery
- 39 Air pollution
- 40 Noise abatement
- 44 **OCEAN ENGINEERING**
- 45 Seafloor soils and foundations
- 46 Seafloor construction systems and operations (including diver and manipulator tools)
- 47 Undersea structures and materials
- 48 Anchors and moorings
- 49 Undersea power systems, electromechanical cables, and connectors
- 50 Pressure vessel facilities
- 51 Physical environment (including site surveying)
- 52 Ocean-based concrete structures
- 53 Hyperbaric chambers
- 54 Undersea cable dynamics

### TYPES OF DOCUMENTS

85 Techdata Sheets

86 Technical Reports and Technical Notes

82 NCEL Guide & Updates

None—  
remove my name

83 Table of Contents & Index to TDS

91 Physical Security

PLEASE HELP US PUT THE ZIP IN YOUR  
MAIL! ADD YOUR FOUR NEW ZIP DIGITS  
TO YOUR LABEL (OR FACSIMILE),  
STAPLE INSIDE THIS SELF-MAILER, AND  
RETURN TO US.

(fold here)

**DEPARTMENT OF THE NAVY**

NAVAL CIVIL ENGINEERING LABORATORY  
PORT HUENEME, CALIFORNIA 93043-5003

**OFFICIAL BUSINESS**

PENALTY FOR PRIVATE USE, \$300

1 IND-NCEL 2700/4 (REV 12-75)

0930-LL-L70-0044

POSTAGE AND FEES PAID  
DEPARTMENT OF THE NAVY  
DOD-316



Commanding Officer  
Code L14  
Naval Civil Engineering Laboratory  
Port Hueneme, California 93043-5003

END

12-86

DTIC