

AD-A174 482

GENERATING FUNCTIONAL FOR ELECTRON-PHONON SYSTEMS FROM  
FUNCTIONAL INTEGRAL (U) GEORGIA UNIV ATHENS DEPT OF  
CHEMISTRY J FLORENCIA 05 NOV 86 TR-33 N00014-84-K-0365

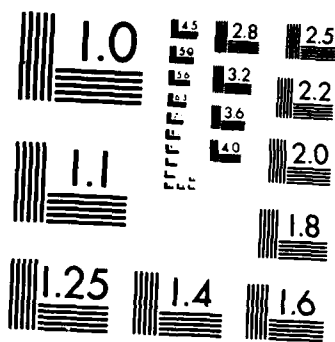
1/1

UNCLASSIFIED

F/G 20/12

NL





MICROCOPY RESOLUTION TEST CHART  
NATIONAL BUREAU OF STANDARDS 1963-A

Unclassified

SECURITY CLASSIFICATION OF THIS PAGE (When Data Entered)

AD-A174 402

| REPORT DOCUMENTATION PAGE  |                       | READ INSTRUCTIONS<br>BEFORE COMPLETING FORM                              |
|--|-----------------------|--|
| 1. REPORT NUMBER<br>Technical Report No. 33  | 2. GOVT ACCESSION NO. | 3. RECIPIENT'S CATALOG NUMBER<br>(12)                                    |
| 4. TITLE (and Subtitle)<br>Generating Functional for Electron-Phonon Systems from Functional Integrals with One-Sided Boundary Conditions  |                       | 5. TYPE OF REPORT & PERIOD COVERED<br>Technical Report                   |
| . AUTHOR(s)<br>Joao Florencia Jr.  |                       | 6. CONTRACT OR GRANT NUMBER(s)<br>N00014-84-K-0365                       |
| 7. PERFORMING ORGANIZATION NAME AND ADDRESS<br>University of Georgia<br>Department of Chemistry<br>Athens, GA 30602  |                       | 10. PROGRAM ELEMENT, PROJECT, TASK AREA & WORK UNIT NUMBERS<br>NR051-861 |
| 8. CONTROLLING OFFICE NAME AND ADDRESS<br>Office of Naval Research<br>Department of the Navy<br>Arlington, VA 22217  |                       | 12. REPORT DATE<br>11/5/86   |
| 14. MONITORING AGENCY NAME & ADDRESS (if different from Controlling Office)  |                       | 13. NUMBER OF PAGES<br>14  |
|  |                       | 15. SECURITY CLASS. (of this report)                                     |
|  |                       | 15a. DECLASSIFICATION/DOWNGRADING SCHEDULE                               |
| 16. DISTRIBUTION STATEMENT (of this Report)<br><br>This document has been approved for public release and sale; its distribution is unlimited.   |                       |  |
| 17. DISTRIBUTION STATEMENT (of the abstract entered in Block 20, if different from Report)   |                       |  |
| 18. SUPPLEMENTARY NOTES<br><br>To be published in <u>Phys. Rev. B</u>  |                       |  |
| 19. KEY WORDS (Continue on reverse side if necessary and identify by block number)<br><br>Thermal Green function, Functional Integrals, Electron-phonon systems  |                       |  |
| 20. ABSTRACT (Continue on reverse side if necessary and identify by block number)<br><br>We derive the generating functional of thermal Green functions for an interacting electron-phonon system through the use of functional integrals in holomorphic representations (c-numbers for phonons and Grassmann numbers for electrons). These integrals are over paths obeying one-sided boundary conditions at either 0 or $\beta=1/kT$ , and do not require normalization factors unlike previous derivations. We recover the Matsubara perturbation formalism without using any results from the standar operator method. |                       |  |

DTIC  
ELECTE  
NOV 20 1986  
S A D

JTIC FILE COPY

DD FORM 1 JAN 73 1473

EDITION OF 1 NOV 68 IS OBSOLETE  
S/N 0102-LF-014-6601

Unclassified  
SECURITY CLASSIFICATION OF THIS PAGE (When Data Entered)

86 11 20 004

OFFICE OF NAVAL RESEARCH

Control N00014-84-K-0365

TECHNICAL REPORT NO. 33

GENERATING FUNCTIONAL FOR ELECTRON-PHONON SYSTEMS FROM FUNCTIONAL  
INTEGRALS WITH ONE-SIDED BOUNDARY CONDITIONS

by

Joao Florencio Jr.

Prepared for publication in

Phys. Rev. B

University of Georgia  
Department of Physics  
Athens, Georgia 30602

November 5, 1986

Reproduction in whole or in part is permitted  
for any purpose of the United States Government.

This document has been approved for public release  
and sale; its distribution is unlimited.



The Matsubara formalism of perturbation theory at finite temperatures plays a distinctive role in the theory of many-body systems.<sup>1</sup> There one uses operator techniques to obtain thermal Green functions of the system as a perturbation expansion. Feynman rules can then be used to evaluate each term of the expansion. From the Green functions one obtains correlation functions, which are closely related to measurable quantities.

An alternative way to obtain the perturbation expansion is by the use of appropriate generating functionals for the thermal Green functions. Their forms are simple enough so that they can be postulated without further justification and yet they are known to reproduce the same results obtained by the operator method. There are, however, some attempts to derive generating functionals by using functional integral methods, namely in the work of Popov<sup>2</sup> and Casher et al<sup>3</sup>. These works, in turn, display some unsatisfactory features. In the work of Popov<sup>2</sup> the field operators are required from the beginning to be periodic (boson case) or antiperiodic (fermion case) in the inverse temperature. These requirements are by no means necessary to obtain the correct Green functions --which are indeed periodic (or antiperiodic) in the inverse temperature-- as one can easily verify this by using the standard operator method.<sup>4</sup> The derivation by Casher et al<sup>3</sup> makes use of an incorrect form of functional integrals in the holomorphic representation for bosons, in which the integrals used are over periodic paths.<sup>5</sup> Finally, it should be pointed out that none of these works give the explicit expression for the generating functional of the Matsubara Green functions which is the object of the present work.

In this paper we use the functional integral method described in Reference 6 to obtain the generating functional for the thermal Green functions of an electron-phonon system. The integration variables are c-numbers for the phonons and Grassmann numbers for the electrons, these variables satisfying one-sided boundary conditions at either 0 or  $\beta$ . The functional integrals used here are known to reproduce the correct partition functions of non-interacting systems of bosons and fermions. They were also used to obtain non-perturbative results for the molecular polaron with quadratic coupling model.<sup>7</sup>

Consider a system of electrons and phonons in a homogeneous medium of volume  $V$ . For simplicity we consider electrons with the same spin and phonons belonging to a single branch. The electron field operators  $\hat{\psi}(x)$  and  $\hat{\psi}^+(x)$  and the phonon field operator  $\hat{\phi}(x)$  can be expressed by the following Fourier expansions<sup>4</sup>:

$$\hat{\psi}(x) = \frac{1}{\sqrt{V}} \sum_k e^{ikx} \hat{a}_k, \quad (1a)$$

$$\hat{\psi}^+(x) = \frac{1}{\sqrt{V}} \sum_k e^{-ikx} \hat{a}_k^+, \quad (1b)$$

and

$$\hat{\phi}(x) = \frac{1}{\sqrt{V}} \sum_q \sqrt{\frac{\omega_q}{2}} (\hat{b}_q e^{iqx} + \hat{b}_q^+ e^{-iqx}). \quad (1c)$$

The operators  $\hat{a}_k$  and  $\hat{a}_k^+$  are Fermi annihilation and creation operators, respectively, whereas  $\hat{b}_q$  and  $\hat{b}_q^+$  are the corresponding Bose operators. The quantities  $\omega_q$  are the unperturbed phonon energies.

The Hamiltonian of the system is given by

$$\hat{H} = \hat{H}_0 + \hat{V} , \quad (2)$$

where

$$\hat{H}_0 = \sum_k \epsilon_k \hat{a}_k^\dagger \hat{a}_k + \sum_q \omega_q (\hat{b}_q^\dagger \hat{b}_q + \frac{1}{2}) \quad (3)$$

is the non-interacting part, and

$$\hat{V} = \int dx \hat{v}(\hat{\Psi}^\dagger(x), \hat{\Psi}(x), \hat{\phi}(x)) \quad (4)$$

is the interaction between electrons and phonons. In the above,  $\epsilon_k$  are the unperturbed single electron energies, and  $\hat{v}$  is the interaction Hamiltonian density.

Now we introduce the temperature-dependent external sources  $\xi$ ,  $\xi^*$  and  $\eta$ , which interact linearly with the electron and phonon operators as follows:

$$\hat{H}_I(\tau) = - \int dx (\hat{\Psi}^\dagger(x) \xi(x, \tau) + \xi^*(x, \tau) \hat{\Psi}(x) + \hat{\phi}(x) \eta(x, \tau)) . \quad (5)$$

The sources  $\xi$  and  $\xi^*$  anticommute with the electron operators and among themselves, whereas  $\eta$  commutes with the phonon operators. These sources need not have actual physical meaning, and at the end we let them to vanish.

The grand-Hamiltonian  $\hat{K}$  of the system in the presence of the sources is given by

$$\hat{K}(\tau) = \hat{H} + \hat{H}_I(\tau) - \mu \hat{n} , \quad (6)$$

where  $\mu$  is the electron chemical potential, and  $\hat{N} = \sum_k \hat{a}_k^\dagger \hat{a}_k$  is the total number of electrons operator.

The generating functional is defined as the following functional of the external sources:

$$Z[\xi^*, \xi, \eta] = \text{Tr} \hat{\rho}[\xi^*, \xi, \eta], \quad (7)$$

where

$$\hat{\rho}[\xi^*, \xi, \eta] = T_\tau \exp\left\{-\int_0^\beta \hat{K}(\tau) d\tau\right\} \quad (8)$$

is the density matrix in the presence of the sources. Here,  $T_\tau$  is the temperature ordering operator. The trace operation can be performed in the holomorphic representation for the electrons and phonons, in which the electrons are represented by Grassmann numbers  $--a_k$  and  $a_k^*$ -- and the phonons by c-numbers  $--b_q$  and  $b_q^*$ . For details of holomorphic representations see, e.g., Faddeev and Slavnov<sup>8</sup> and references therein.

In the holomorphic representation, the right hand side of Eq.(7) is given by

$$\begin{aligned} \text{Tr} \hat{\rho}[\xi^*, \xi, \eta] = & \iiint \rho_{\xi^*, \xi, \eta}(b^*, a^*, b, a) \prod_q \exp(-b_q^* b_q) \frac{db_q^* db_q}{2\pi i} \\ & \times \prod_k \exp(-a_k a_k^*) da_k da_k^*, \end{aligned} \quad (9)$$

where  $\rho_{\xi^*, \xi, \eta}(b^*, a^*, b, a)$  is the kernel of the density matrix operator, and the subscripts denote its functional dependence on the external sources. The density matrix kernel is represented by the following functional integral<sup>6</sup> :

$$\begin{aligned}
\rho_{\xi^*, \xi, \eta}(b^*, a^*, b, a) &= \int_{\substack{a_k^*(\beta) = a_k^* \\ a_k(0) = a_k}} \int_{\substack{b_q^*(\beta) = b_q^* \\ b_q(0) = b_q}} \exp\{\sum_q b_q^*(\beta) b_q(\beta) + \sum_k a_k^*(\beta) a_k(\beta)\} \\
&+ \int_0^\beta \{ -\sum_q b_q^*(u) \dot{b}_q(u) - \sum_k a_k^*(u) \dot{a}_k(u) - K(b^*(u), a^*(u), b(u), a(u), u) \} du \\
&\times \left( \prod_{q,u} \frac{db_q^*(u) db_q(u)}{2\pi i} \right) \left( \prod_{k,u} da_k^*(u) da_k(u) \right), \quad (10)
\end{aligned}$$

where  $K$  is the normal symbol<sup>8</sup> of the operator  $\hat{K}$ , that is,

$$K = \sum_k (\epsilon_k - \mu) a_k^* a_k + \sum_q \omega_q (b_q^* b_q + \frac{1}{2}) + \int dx v(\psi^*, \psi, \phi) - \int dx (\psi^* \xi + \xi^* \psi + \phi \eta). \quad (11)$$

In the above expression,  $v$  is the normal symbol of the interaction density  $\hat{v}$ , and  $\psi^*$ ,  $\psi$  and  $\phi$  are the normal symbols of the field operators  $\hat{\psi}^+$ ,  $\hat{\psi}$  and  $\hat{\phi}$ , respectively. Notice that the functional integral is neither periodic nor antiperiodic in the inverse temperature, rather it obeys one-sided boundary conditions at either 0 or  $\beta$ .

The interaction part can be removed from the integrand, by using the following identity:

$$\begin{aligned}
&\exp\left\{ \int_0^\beta du \int dx [-v(\psi^*, \psi, \phi) + \psi^*(x, u) \xi(x, u) + \xi^*(x, u) \psi(x, u) + \phi(x, u) \eta(x, u)] \right\} \\
&= \exp\left\{ - \int_0^\beta du \int dx v\left(\frac{\delta}{\delta \xi}, \frac{\delta}{\delta \xi^*}, \frac{\delta}{\delta \eta}\right) \right\} \exp\left\{ \int_0^\beta du \int dx [\psi^*(x, u) \xi(x, u) + \xi^*(x, u) \psi(x, u) \right. \\
&\quad \left. + \phi(x, u) \eta(x, u)] \right\}, \quad (12)
\end{aligned}$$

where we have made the following replacements in  $v$ ,

$$\psi^* \rightarrow \frac{\delta}{\delta \xi} \quad (\text{right derivative}),$$

$$\psi \rightarrow \frac{\delta}{\delta \xi^*} \quad (\text{left derivative}),$$

and

$$\phi \rightarrow \frac{\delta}{\delta \eta} .$$

The exponential form containing  $v$  on the right hand side of Eq.(12) is to be understood as a power series expansion.

By using Eq.(12), the functional integrals for the electrons and phonons become decoupled from each other. The density matrix kernel assumes the following form:

$$\rho_{\xi^*, \xi, \eta}(b^*, a^*, b, a) = \exp\left\{-\int_0^\beta du \int dx v\left(\frac{\delta}{\delta \xi}, \frac{\delta}{\delta \xi^*}, \frac{\delta}{\delta \eta}\right)\right\} \rho_\eta^{\text{ph}}(b^*, b) \rho_{\xi^*, \xi}^{\text{el}}(a^*, a) , \quad (13)$$

where  $\rho_\eta^{\text{ph}}$  and  $\rho_{\xi^*, \xi}^{\text{el}}$  are, respectively, the density matrix of non-interacting phonons and electrons in the presence of external sources. They are given, respectively, by

$$\rho_\eta^{\text{ph}}(b^*, b) = \int_{\substack{b_q^*(\beta) = b_q^* \\ b_q(0) = b_q}} \exp \left\{ \sum_q \{ b_q^*(\beta) b_q(\beta) + \int_0^\beta (-b_q^*(u) \dot{b}_q(u) - \omega_q (b_q^*(u) b_q(u) + \frac{1}{2}) - (b_q^*(u) \gamma_q(u) + b_q(u) \gamma_q^*(u)) \} du \right\} \prod_{q, u} \frac{db_q^*(u) db_q(u)}{2\pi i} \quad (14)$$

and

$$\rho_{\xi^*, \xi}^{e1}(a^*, a) = \int_{\substack{a_k^*(\beta) = a_k^* \\ a_k(0) = a_k}} \exp \left\{ \sum_k \{ a_k^*(\beta) a_k(\beta) + \int_0^\beta (-\dot{a}_k^*(u) a_k(u) - (\epsilon_k - u) a_k^*(u) a_k(u) \right. \\ \left. - (a_k^*(u) \zeta_k(u) + \zeta_k^*(u) a_k(u)) \right\} du \} \prod_{k,u} da_k^*(u) da_k(u), \quad (15)$$

where

$$\gamma_q(u) = - \frac{1}{\sqrt{V}} \sqrt{\frac{\omega_q}{2}} \int dx e^{-iqx} \eta(x, u), \quad (16a)$$

$$\gamma_q^*(u) = - \frac{1}{\sqrt{V}} \sqrt{\frac{\omega_q}{2}} \int dx e^{iqx} \eta(x, u), \quad (16b)$$

$$\zeta_k(u) = - \frac{1}{\sqrt{V}} \int dx e^{-ikx} \xi(x, u), \quad (16c)$$

and

$$\zeta_k^*(u) = - \frac{1}{\sqrt{V}} \int dx e^{ikx} \xi^*(x, u). \quad (16d)$$

Both of the integrals (14) and (15) are Gaussian and can be evaluated exactly. Their solutions are simply the values of their integrands at the paths which extremize their actions, i.e., the arguments in the exponential forms<sup>6</sup>. The extremal conditions yield the equations

$$\dot{b}_q(u) + \omega_q b_q(u) + \gamma_q(u) = 0, \quad b_q(0) = b_q \quad (17a)$$

$$\dot{b}_q^*(u) - \omega_q b_q^*(u) - \gamma_q^*(u) = 0, \quad b_q^*(\beta) = b_q^* \quad (17b)$$

$$\dot{a}_k(u) + (\epsilon_k - \mu)a_k(u) + \zeta_k(u) = 0, \quad a_k(0) = a_k \quad (17c)$$

and

$$\dot{a}_k^*(u) - (\epsilon_k - \mu)a_k^*(u) - \zeta_k^*(u) = 0, \quad a_k^*(\beta) = a_k^* \quad (17d)$$

Their respective solutions are

$$b_q(u) = b_q e^{-\omega_q u} - \int_0^u e^{-\omega_q(u-s)} \gamma_q(s) ds, \quad (18a)$$

$$b_q^*(u) = b_q^* e^{\omega_q(u-\beta)} - \int_u^\beta e^{\omega_q(u-s)} \gamma_q^*(s) ds, \quad (18b)$$

$$a_k(u) = a_k e^{-(\epsilon_k - \mu)u} - \int_0^u e^{-(\epsilon_k - \mu)(u-s)} \zeta_k(s) ds, \quad (18c)$$

and

$$a_k^*(u) = a_k^* e^{(\epsilon_k - \mu)(u-\beta)} - \int_u^\beta e^{(\epsilon_k - \mu)(u-s)} \zeta_k^*(s) ds. \quad (18d)$$

Notice that neither these extremal paths nor their respective equations are complex conjugate pairs.

The values of the integrals (14) and (15) are then given, respectively, by

$$\begin{aligned} \rho_n^{ph}(b^*, b) = & \exp\left\{-\frac{\beta\omega_q}{q}\right\} \exp\left\{\frac{\beta\omega_q}{q}\right\} \exp\left\{b_q^* b_q e^{-\beta\omega_q} - b_q^* e^{-\beta\omega_q} \int_0^\beta e^{\omega_q u} \gamma_q(u) du \right. \\ & \left. - b_q \int_0^\beta e^{-\omega_q u} \gamma_q^*(u) du + \int_0^\beta du \int_0^u ds e^{-\omega_q(u-s)} \gamma_q^*(u) \gamma_q(s)\right\} \quad (19) \end{aligned}$$

and

$$\begin{aligned} \rho_{\xi^*, \xi}^{el}(a^*, a) &= \exp\left\{\sum_k \left( a_k^* a_k e^{-\beta(\epsilon_k - \mu)} - a_k^* e^{-\beta(\epsilon_k - \mu)} \int_0^\beta e^{(\epsilon_k - \mu)u} \zeta_k(u) du \right. \right. \\ &\quad \left. \left. - \left( \int_0^\beta e^{-(\epsilon_k - \mu)u} \zeta_k^*(u) du \right) a_k + \int_0^\beta du \int_0^u ds e^{-(\epsilon_k - \mu)(u-s)} \zeta_k^*(u) \zeta_k(s) \right) \right\}. \end{aligned} \quad (20)$$

These are the final results for the density matrix kernels of non-interacting phonons and electrons in the presence of external sources. Next we use the trace formulae to obtain the following partition functions:

$$\begin{aligned} Z_{ph}^0[\eta] &= \int \rho_{\eta}^{ph}(b^*, b) \exp\left\{-\sum_q \frac{db_q^* db_q}{2\pi i}\right\} \\ &= \left( \prod_q \frac{e^{-\frac{1}{2}\beta\omega_q}}{1 - e^{-\beta\omega_q}} \right) \exp\left\{\sum_q \left( (N_q^B + 1) \int_0^\beta du \int_0^u ds e^{-\omega_q(u-s)} \gamma_q^*(u) \gamma_q(s) \right. \right. \\ &\quad \left. \left. + N_q^B \int_0^\beta du \int_u^\beta ds e^{-\omega_q(u-s)} \gamma_q^*(u) \gamma_q(s) \right) \right\} \end{aligned} \quad (21)$$

and

$$\begin{aligned} Z_{el}^0[\xi^*, \xi] &= \int \rho_{\xi^*, \xi}^{el}(a^*, a) \exp\left\{-\sum_k a_k a_k^*\right\} \prod_k da_k da_k^* \\ &= \left( \prod_k (1 + e^{-\beta(\epsilon_k - \mu)}) \right) \exp\left\{\sum_k \left( \int_0^\beta du \int_0^u ds e^{-(\epsilon_k - \mu)(u-s)} \zeta_k^*(u) \zeta_k(s) \right. \right. \\ &\quad \left. \left. - N_k^F \int_0^\beta du \int_0^\beta ds e^{-(\epsilon_k - \mu)(u-s)} \zeta_k^*(u) \zeta_k(s) \right) \right\}, \end{aligned} \quad (22)$$

where

$$N_q^B = \frac{1}{e^{\beta\omega_q} - 1}$$

$$N_k^F = \frac{1}{e^{\beta(\epsilon_k - \mu)} + 1}$$

are, respectively, the familiar Bose and Fermi distribution functions. Notice that the dependence of the partition functions on  $\eta$ ,  $\xi^*$  and  $\xi$  is implicitly understood in the above expressions due to Eqs.(16a-d).

We now use the following identities

$$\sum_q (N_q^B + 1) \int_0^\beta du \int_0^u ds e^{-\omega_q(u-s)} \gamma_q^*(u) \gamma_q(s) = \frac{1}{2} \sum_q (N_q^B + 1) \int_0^\beta du \int_0^\beta ds e^{-\omega_q|u-s|} \gamma_q^*(u) \gamma_q(s), \quad (23a)$$

$$\sum_q N_q^B \int_0^\beta du \int_u^\beta ds e^{-\omega_q(u-s)} \gamma_q^*(u) \gamma_q(s) = \frac{1}{2} \sum_q N_q^B \int_0^\beta du \int_0^\beta ds e^{\omega_q|u-s|} \gamma_q^*(u) \gamma_q(s) \quad (23b)$$

and

$$\sum_k \int_0^\beta du \int_0^u ds e^{-(\epsilon_k - \mu)(u-s)} \zeta_k^*(u) \zeta_k(s) = \sum_k \int_0^\beta du \int_0^\beta ds e^{-(\epsilon_k - \mu)(u-s)} \zeta_k^*(u) \zeta_k(s) \theta(u-s) \quad (23c)$$

where  $\theta$  is the step function, together with Eqs.(16a-d) to express the partition functions (21) and (22) in the following forms:

$$Z_{ph}^0[\eta] = \left( \prod_q \frac{e^{-\frac{1}{2}\beta\omega_q}}{1 - e^{-\beta\omega_q}} \right) \exp\left\{ \frac{1}{2} \int_0^\beta du \int_0^\beta ds \int dx \int dy \eta(x,u) \frac{1}{V} \sum_q \frac{\omega_q}{2} ((N_q^B + 1) e^{iq(x-y)} e^{-\omega_q|u-s|} + N_q^B e^{iq(x-y)} e^{\omega_q|u-s|}) \eta(y,s) \right\} \quad (24)$$

and

$$Z_{el}^0[\xi^*, \xi] = \left( \prod_k (1 + e^{-\beta(\epsilon_k - \mu)}) \right) \exp\left\{ \int_0^\beta du \int_0^\beta ds \int dx \int dy \times \xi^*(x,u) \frac{1}{V} \sum_k e^{ik(x-y)} e^{-(\epsilon_k - \mu)(u-s)} (\theta(u-s) - i n_k^F) \xi(y,s) \right\} \quad (25)$$

Notice that the unperturbed thermal Green functions for electrons and phonons appear explicitly in the above expressions. In addition, the pre-exponential forms are simply the unperturbed partition functions. More explicitly,

$$Z_{ph}^0[\eta] = Z_{ph}^0 \exp\left\{-\frac{1}{2} \int_0^\beta du \int_0^\beta ds \int dx \int dy \eta(x,u) D^{(0)}(x,u;y,s) \eta(y,s)\right\} \quad (26)$$

and

$$Z_{el}^0[\xi^*, \xi] = Z_{el}^0 \exp\left\{-\int_0^\beta du \int_0^\beta ds \int dx \int dy \xi^*(x,u) G^{(0)}(x,u;y,s) \xi(y,s)\right\}, \quad (27)$$

where

$$Z_{ph}^0 = \prod_q \frac{e^{-\frac{1}{2}\beta\omega_q}}{1 - e^{-\beta\omega_q}}, \quad (28)$$

$$Z_{el}^0 = \prod_k (1 + e^{-\beta(\epsilon_k - \mu)}), \quad (29)$$

$$D^{(0)}(x,u;y,s) = -\frac{1}{2V} \sum_q \omega_q \left\{ (N_q^B + 1) e^{iq(x-y)} e^{-\omega_q|u-s|} + N_q^B e^{iq(x-y)} e^{\omega_q|u-s|} \right\}, \quad (30)$$

and

$$G^{(0)}(x,u;y,s) = -\frac{1}{V} \sum_k e^{ik(x-y)} e^{-(\epsilon_k - \mu)(u-s)} (\theta(u-s) - N_k^F). \quad (31)$$

The above expressions for the unperturbed phonon Green function  $D^{(0)}$  and the electron Green function  $G^{(0)}$  are the same found in textbooks.<sup>9</sup> Notice that they were obtained here strictly from functional integral methods. There was no assumption made concerning periodicity or antiperiodicity of the field operators in the imaginary time, yet these

Green functions do obey periodicity  $--D^{(0)}--$  and antiperiodicity  $--G^{(0)}--$  conditions.

Finally, by combining the above results we arrive at the final expression for the generating functional for the interacting system:

$$\begin{aligned}
 Z[\xi^*, \xi, \eta] = & Z^0 \exp\left\{- \int_0^\beta du \int dx v\left(\frac{\delta}{\delta \xi}, \frac{\delta}{\delta \xi^*}, \frac{\delta}{\delta \eta}\right)\right\} \\
 & \times \exp\left\{- \frac{1}{2} \int_0^\beta du \int_0^\beta ds \int dx \int dy \eta(x, u) D^{(0)}(x, u; y, s) \eta(y, s) \right. \\
 & \left. - \int_0^\beta du \int_0^\beta ds \int dx \int dy \xi^*(x, u) G^{(0)}(x, u; y, s) \xi(y, s)\right\} , \quad (32)
 \end{aligned}$$

where  $Z^0 = Z_{ph}^0 Z_{el}^0$ .

The partition function is obtained by first expanding the form containing the interaction  $v$  in a power series, and then performing the functional derivatives required in each term of the series and, finally, setting the sources equal to zero. Of course, one still is left with integrals over the spatial coordinates and the inverse temperature. This procedure amounts to summing all possible diagrams with no external lines.

The two-point Green functions for the electrons and phonons are obtained, respectively, by

$$G(x_1, \tau_1; x_2, \tau_2) = - \frac{1}{Z} \frac{\delta^2 Z}{\delta \xi^*(x_1, \tau_1) \delta \xi(x_2, \tau_2)} \Big|_{\xi^* = \xi = \eta = 0} \quad (33)$$

and

$$D(x_1, \tau_1; x_2, \tau_2) = - \frac{1}{Z} \frac{\delta^2 Z}{\delta \eta(x_1, \tau_1) \delta \eta(x_2, \tau_2)} \Big|_{\xi^* = \xi = \eta = 0} . \quad (34)$$

The diagram expansions of these Green functions will contain only connected diagrams with two external lines. As usual, each line in a given diagram is associated with an unperturbed Green function and the vertices are associated with the interaction  $v$ . The coordinates  $x_1$  and  $x_2$  denote the free ends of the external lines at  $\tau_1$  and  $\tau_2$ , respectively. In these expansions, Wick's theorem is automatically satisfied. Finally, it should be pointed out that Green functions with many-points can also be obtained from (32).

To summarize, we have derived the explicit expression of the generating functional for the temperature dependent perturbation theory of an electron-phonon system. The form (32) which insofar has only been used heuristically is now indeed justified. One should also notice that no use of prior results from the operator method was required to the derivation of the generating functional. In a forthcoming article we use techniques of functional integrals in the holomorphic representation to show how to obtain non-perturbative expansions for the partition functions of systems of bosons and fermions.

#### ACKNOWLEDGMENTS

The author is grateful to Professor B. Goodman for several valuable discussions. He is also indebted to Professor M. H. Lee and the Office of Naval Research for the financial support.

## REFERENCES

1. T. Matsubara, *Prog. Theor. Phys.* 14, 351 (1953).
2. A. Casher, D. Lurié, and M. Revzen, *J. Math. Phys.* 9, 1312 (1968).
3. V. N. Popov, Functional Integrals in Quantum Field Theory and Statistical Physics (Dordrecht: Reidel, 1983).
4. See, e.g., A. A. Abrikosov, L. P. Gorkov, and I. E. Dzyaloshinsky, Methods of Quantum Field Theory in Statistical Physics (Englewood Cliffs: Prentice-Hall, 1963).
5. In the passage from Eq.(7) to Eq.(8) of Ref. 2, the authors mislabel some of the quantities involved: There is no justification for setting  $\alpha_0 = \alpha_N$  in some terms while leaving the combination  $\bar{\alpha}_0 \alpha_1$  unchanged.
6. J. Florencio and B. Goodman, *Phys. Rev. B* 34, 3634 (1986).
7. J. Florencio and B. Goodman, *Phys. Rev. B* 34, 3639 (1986).
8. L. D. Faddeev and A. A. Slavnov, Gauge Fields (Reading: Benjamin/Cummings, 1980).
9. The form (30) can be found, for instance, in Ref. 1, p. 103, whereas the form (31) is in G. Mahan, Many-Particle Physics (Plenum: New York, 1981), p. 130.

A. XY and TI models in higher dimensions at infinite temperature.

The time evolution in the XY model is expected to be quite different from that in the TI model since the two models are inequivalent. If, however, the strength of the external field  $B$  in the one-dimensional TI model is made to approach the coupling constant  $J$ , the time evolution becomes identical to that in the one-dimensional XY model. We have shown that when  $B = J$ , the geometric structure of the Hilbert spaces of  $S_j^x$  in the TI and XY models become identical. The two structures are not identical at any other values of  $B$ . It has been established that the form of the time evolution is a unique function of the geometric structure of the realized Hilbert space.<sup>7</sup> Hence one can understand the origin of the coincidence in the time evolution of  $S_j^x$  at this particular value of  $B$ . In addition, the realized recurrence relation turns out to be simple enough to permit an analytic solution for the entire family of the relaxation functions.

For the XY and TI models in higher dimensions, e.g.  $d = 2$ , one does not presently know anything about their time evolution. While the analytic solution for it poses a challenge to any method, there is a simpler, perhaps more immediate problem. That is, whether the coincidence in the time evolution is unique to one dimension, or whether it also exists in higher dimensions possibly with some  $d$ -dependent values for  $B$ . This problem can be readily tackled by the method of recurrence relations, since the recurrants can be calculated in higher dimensions. According to the method of recurrence relations, it is then sufficient to compare the geometric structures of the realized Hilbert spaces and to find, if it exists, the value of  $B$  for which the two structures become identical to each other.<sup>14,15</sup>

END

1-87

DTIC