

AD-A176 446

SELECTED MEDICAL CARE STATISTICS FOURTH QUARTER FY-86

1/1

(U) WASHINGTON HEADQUARTERS SERVICES (DOD) BY

DIRECTORATE FOR INFORMATION OPERATIONS AND REPORTS

UNCLASSIFIED

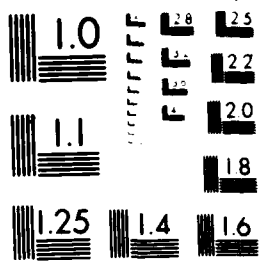
30 SEP 86 DIOR/L02-86/04

F/C 6/5

ML

END





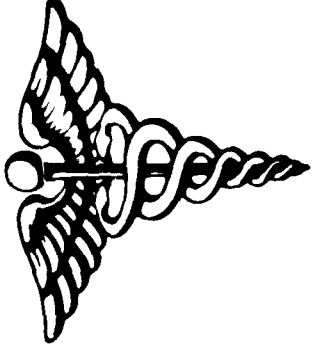
MICROCOPY RESOLUTION TEST CHART
ANSI #1 - 1963 - 10X

12

L02

Department of Defense
SELECTED MEDICAL CARE STATISTICS

Quarter Ending September 30, 1986



DTIC
SELECTED
S FEB 06 1987
D

DISTRIBUTION STATEMENT A
Approved for Public Release
Distribution Unlimited

AD-A176 446
OTIC FILE COPY

224 8 150

Department of Defense Selected Medical Care Statistics

Quarter Ending September 30, 1986

Washington Headquarters Services
Directorate for Information
Operations and Reports

Accession For	
NTIS	<input checked="" type="checkbox"/> CRA&I
DTIC	<input type="checkbox"/> TAB
Unannounced	<input type="checkbox"/>
Justification	
By	
Distribution	
Availability Codes	
Dist	Avail and/or Special
A-1	

~~FOR SALE BY THE SUPERINTENDENT OF DOCUMENTS
U.S. GOVERNMENT PRINTING OFFICE
WASHINGTON, D.C. 20540~~

DTIC and NTIS identification number for this publication is DIOR/O2-86/04.

9 FILE

FOREWORD

Selected Medical Care Statistics (SMCS) is a quarterly publication prepared by the Washington Headquarters Services, Directorate for Information Operations and Reports (WHS/DIOR) of the Office of the Secretary of Defense.

SMCS presents quarterly summary data concerning medical care provided at fixed military medical facilities located in (1) the United States and (2) outside the United States, in territories, possessions and foreign countries. This publication contains pie charts which are based on the percent of the worldwide DoD total for each of the categories. Admissions and beds occupied by dependents of other uniformed personnel (PHS, CG, NOAA) are less than one percent and are included in the other category.

This publication is generated from a computerized data base developed and maintained in consonance with Department of Defense Instruction (DoDI) 6015.14, November 14, 1977, under Reports Control Symbol DD-COMP(Q)1474 by the Manpower Management Information Division of WHS/DIOR.

TABLE OF CONTENTS

TABLE NUMBER		PAGE
Table 1.1	Operating Beds/Operating Bassinets/Beds Occupied - Worldwide.....	1
Figure 1.1	Beds Occupied - Percent of DoD Total Worldwide.....	2
Table 1.2	Operating Beds/Operating Bassinets/Beds Occupied - United States.....	3
Table 1.3	Operating Beds/Operating Bassinets/Beds Occupied - Outside United States.....	4
Table 2.1	Admissions, Worldwide.....	5
Figure 2.1	Admissions - Percent of DoD Total Worldwide.....	6
Table 2.2	Admissions - United States.....	7
Table 2.3	Admissions - Outside United States.....	8
Table 3.1	Outpatient Visits and Live Births - Worldwide.....	9
Figure 3.1	Outpatient Visits - Percent of Worldwide Total.....	10
Table 3.2	Outpatient Visits and Live Births - United States.....	11
Table 3.3	Outpatient Visits and Live Births - Outside United States.....	12
	GLOSSARY	14

TABLE 1
DEPARTMENT OF DEFENSE
SELECTED DATA CONCERNING MEDICAL CARE
PROVIDED AT FIXED MILITARY FACILITIES
FOR QUARTER ENDING
SEPTEMBER 1986

OPERATING BEDS - WORLDWIDE		OOD TOTAL	ARMY FACILITIES	NAVY FACILITIES	AIR FORCE FACILITIES
1.	NUMBER OF OPERATING BEDS	17,645	7,923	4,157	5,565
2.	NUMBER OF OPERATING BASSINETS	1,970	608	247	1,115
3.	NUMBER OF BEDS OCCUPIED (DAILY AVERAGE)	13,778	6,652	2,875	4,251
4.	BEDS OCCUPIED BY US ACTIVE DUTY UNIFORMED PERSONNEL	5,388	2,565	1,514	1,289
	A. MILITARY	5,331	2,567	1,486	1,278
	(1) ARMY	2,382	2,208	44	130
	(2) NAVY-MARINE CORPS	1,692	1,183	1,403	106
	(3) AIR FORCE	1,257	176	38	1,042
	B. OTHER UNIFORMED PERSONNEL (PHS, CG, NOAA)	57	18	28	11
5.	BEDS OCCUPIED BY RETIRED US UNIFORMED PERSONNEL	2,099	1,037	320	742
	A. RETIRED MILITARY	2,082	1,032	314	736
	(1) ARMY	893	693	53	147
	(2) NAVY-MARINE CORPS	460	124	224	112
	(3) AIR FORCE	729	215	37	477
	B. OTHER RETIRED UNIFORMED PERSONNEL (PHS, CG, NOAA)	17	5	6	6
6.	BEDS OCCUPIED BY DEPENDENTS OF US ACTIVE DUTY MILITARY PERSONNEL	3,858	1,756	897	1,405
	(1) ARMY	1,584	1,404	38	142
	(2) NAVY-MARINE CORPS	1,411	141	604	112
	(3) AIR FORCE	1,477	211	55	1,151
7.	BEDS OCCUPIED BY DEPENDENTS OF RETIRED AND DECEASED US MILITARY PERSONNEL	1,806	828	269	709
	(1) ARMY	720	541	41	138
	(2) NAVY-MARINE CORPS	388	93	188	107
	(3) AIR FORCE	698	194	40	464
8.	BEDS OCCUPIED BY DEPENDENTS OF OTHER UNIFORMED PERSONNEL (PHS, CG, NOAA)	44	13	10	21
9.	BEDS OCCUPIED BY ALL OTHER BENEFICIARIES	583	433	65	85

**BEDS OCCUPIED—PERCENT OF DOD TOTAL WORLDWIDE
QUARTER ENDING SEPTEMBER 30, 1986**

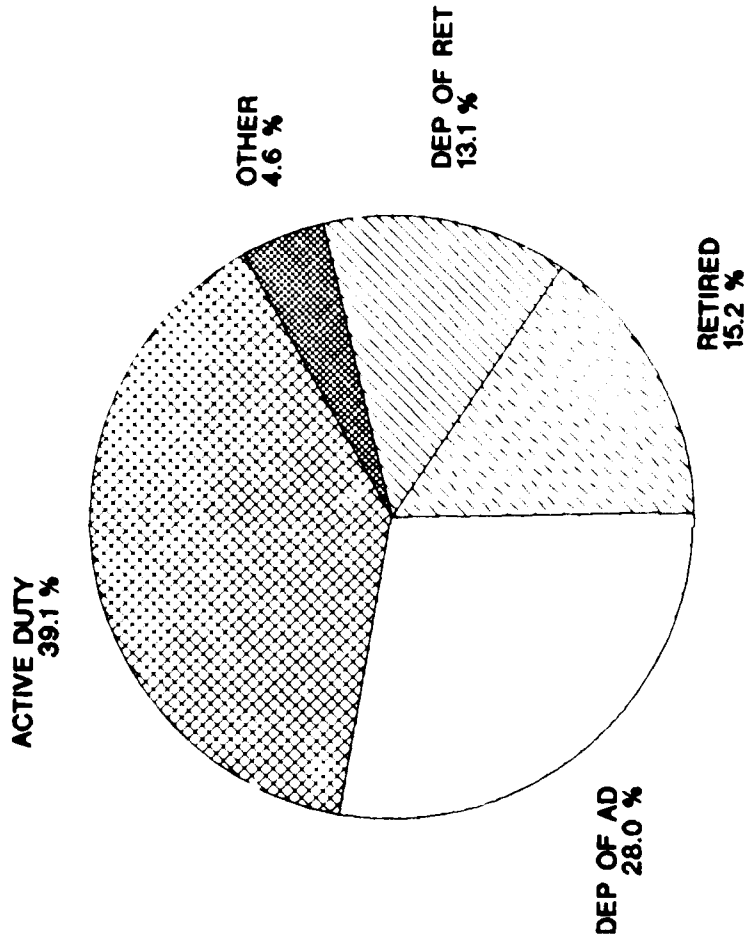


FIGURE 1.1

TABLE 1 2
DEPARTMENT OF DEFENSE
SELECTED DATA CONCERNING MEDICAL CARE
PROVIDED AT FIXED MILITARY FACILITIES
FOR QUARTER ENDING
SEPTEMBER 1986

OPERATING BEDS - UNITED STATES		DOD TOTAL	ARMY FACILITIES	NAVY FACILITIES	AIR FORCE FACILITIES
1	NUMBER OF OPERATING BEDS - TOTAL	15,037	6,436	3,717	4,884
2	NUMBER OF OPERATING BASSINETS - TOTAL	1,619	459	199	961
3	NUMBER OF BEDS OCCUPIED (DAILY AVERAGE) - TOTAL	11,750	5,517	2,520	3,713
4	BEDS OCCUPIED BY US ACTIVE DUTY UNIFORMED PERSONNEL - TOTAL	4,361	1,992	1,317	1,052
A	MILITARY	4,305	1,974	1,290	1,041
	(1) ARMY	1,802	1,671	39	92
	(2) NAVY-MARINE CORPS	1,476	167	1,223	86
	(3) AIR FORCE	1,027	136	28	863
B	OTHER UNIFORMED PERSONNEL (PHS,CG,NOAA) - TOTAL	56	18	27	11
5	BEDS OCCUPIED BY RETIRED US UNIFORMED PERSONNEL - TOTAL	2,034	1,007	308	719
A	RETIRED MILITARY	2,017	1,002	302	713
	(1) ARMY	860	669	50	141
	(2) NAVY-MARINE CORPS	444	122	216	106
	(3) AIR FORCE	713	211	36	466
B	OTHER RETIRED UNIFORMED PERSONNEL (PHS,CG,NOAA) - TOTAL	17	5	6	6
6	BEDS OCCUPIED BY DEPENDENTS OF US ACTIVE DUTY MILITARY PERSONNEL - TOTAL	3,050	1,322	570	1,158
	(1) ARMY	1,173	1,036	31	106
	(2) NAVY-MARINE CORPS	743	132	514	97
	(3) AIR FORCE	1,134	154	25	955
7	BEDS OCCUPIED BY DEPENDENTS OF RETIRED AND DECEASED US MILITARY PERSONNEL - TOTAL	1,767	814	261	692
	(1) ARMY	703	530	39	134
	(2) NAVY-MARINE CORPS	376	92	183	101
	(3) AIR FORCE	688	192	39	457
8	BEDS OCCUPIED BY DEPENDENTS OF OTHER UNIFORMED PERSONNEL (PHS,CG,NOAA) - TOTAL	42	13	9	20
9	BEDS OCCUPIED BY ALL OTHER BENEFICIARIES - TOTAL	496	369	55	72

TABLE 1.3
DEPARTMENT OF DEFENSE
SELECTED DATA CONCERNING MEDICAL CARE
PROVIDED AT FIXED MILITARY FACILITIES
FOR QUARTER ENDING
SEPTEMBER 1986

OPERATING BEDS - OUTSIDE UNITED STATES		DOD TOTAL	ARMY FACILITIES	NAVY FACILITIES	AIR FORCE FACILITIES
1.	NUMBER OF OPERATING BEDS - TOTAL	2,608	1,487	440	681
2.	NUMBER OF OPERATING BASSINETS - TOTAL	351	149	48	154
3.	NUMBER OF BEDS OCCUPIED (DAILY AVERAGE) - TOTAL	2,028	1,135	355	538
4.	BEDS OCCUPIED BY US ACTIVE DUTY UNIFORMED PERSONNEL - TOTAL	1,027	593	197	237
A.	MILITARY - TOTAL	1,026	593	196	237
	(1) ARMY	580	537	5	38
	(2) NAVY-MARINE CORPS	216	16	180	20
	(3) AIR FORCE	230	40	11	179
8.	OTHER UNIFORMED PERSONNEL (PHS,CG,NOAA) - TOTAL	1	0	1	0
5.	BEDS OCCUPIED BY RETIRED US UNIFORMED PERSONNEL - TOTAL	65	30	12	23
A.	RETIRED MILITARY - TOTAL	65	30	12	23
	(1) ARMY	33	24	3	6
	(2) NAVY-MARINE CORPS	16	2	8	6
	(3) AIR FORCE	16	4	1	11
B.	OTHER RETIRED UNIFORMED PERSONNEL (PHS,CG,NOAA) - TOTAL	0	0	0	0
6.	BEDS OCCUPIED BY DEPENDENTS OF US ACTIVE DUTY MILITARY PERSONNEL - TOTAL	808	434	127	247
	(1) ARMY	411	368	7	36
	(2) NAVY-MARINE CORPS	114	9	90	15
	(3) AIR FORCE	283	57	30	196
7.	BEDS OCCUPIED BY DEPENDENTS OF RETIRED AND DECEASED US MILITARY PERSONNEL - TOTAL	39	14	8	17
	(1) ARMY	17	11	2	4
	(2) NAVY-MARINE CORPS	12	1	5	6
	(3) AIR FORCE	10	2	1	7
8.	BEDS OCCUPIED BY DEPENDENTS OF OTHER UNIFORMED PERSONNEL (PHS,CG,NOAA) - TOTAL	2	0	1	1
9.	BEDS OCCUPIED BY ALL OTHER BENEFICIARIES - TOTAL	87	64	10	13

TABLE 2
 DEPARTMENT OF DEFENSE
 SELECTED DATA CONCERNING MEDICAL CARE
 PROVIDED AT FIXED MILITARY FACILITIES
 FOR QUARTER ENDING
 SEPTEMBER 1986

ADMISSIONS - WORLDWIDE		DOD TOTAL	ARMY FACILITIES	NAVY FACILITIES	AIR FORCE FACILITIES
10	NUMBER OF ADMISSIONS	232,764	106,643	50,589	75,532
11	ADMISSIONS OF US ACTIVE DUTY UNIFORMED PERSONNEL	73,015	31,901	21,214	19,900
	A. MILITARY	72,489	31,781	20,939	19,769
	(1) ARMY	30,020	27,874	604	1,542
	(2) NAVY-MARINE CORPS	22,621	1,760	19,617	1,244
	(3) AIR FORCE	19,848	2,147	1,718	16,983
12	OTHER UNIFORMED PERSONNEL (PHS.CG.NOAA)	526	120	275	131
	ADMISSIONS OF RETIRED US UNIFORMED PERSONNEL	26,073	12,600	4,702	8,771
	A. ADMISSIONS OF RETIRED MILITARY	25,868	12,531	4,628	8,711
	(1) ARMY	10,943	8,550	733	1,660
	(2) NAVY-MARINE CORPS	5,860	1,431	3,231	1,278
	(3) AIR FORCE	8,965	2,550	642	5,773
	B. ADMISSIONS OF OTHER RETIRED UNIFORMED PERSONNEL (PHS.CG.NOAA)	205	69	76	60
13	ADMISSIONS OF DEPENDENTS OF US ACTIVE DUTY PERSONNEL (PHS.CG.NOAA)	96,288	42,861	18,895	34,532
	A. ARMY	39,215	35,208	846	3,161
	B. NAVY-MARINE CORPS	22,521	3,555	16,578	2,357
	C. AIR FORCE	34,482	4,298	1,470	28,714
14	ADMISSIONS OF DEPENDENTS OF RETIRED AND DECEASED US MILITARY PERSONNEL	26,591	11,686	4,607	10,298
	A. ARMY	10,521	7,854	731	1,936
	B. NAVY-MARINE CORPS	6,022	1,501	3,205	1,316
	C. AIR FORCE	10,028	2,331	671	6,826
15	ADMISSIONS OF DEPENDENTS OF OTHER UNIFORMED PERSONNEL (PHS.CG.NOAA)	888	261	250	377
16	ADMISSIONS OF ALL OTHER BENEFICIARIES	9,909	7,334	921	1,654

**ADMISSIONS—PERCENT OF DOD TOTAL WORLDWIDE
QUARTER ENDING SEPTEMBER 30, 1986**

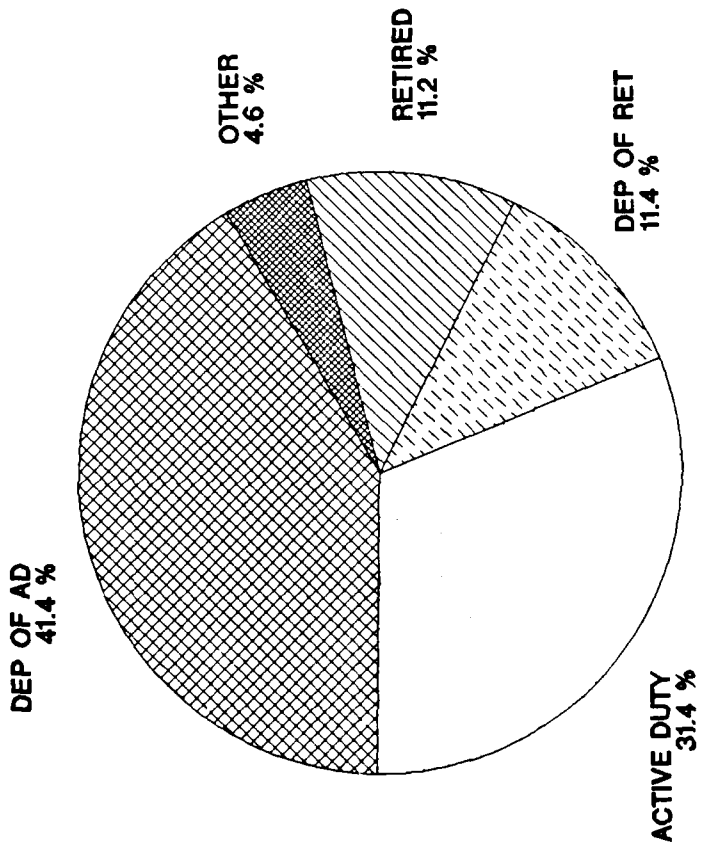


FIGURE 21

TABLE 2 2
DEPARTMENT OF DEFENSE
SELECTED DATA CONCERNING MEDICAL CARE
PROVIDED AT FIXED MILITARY FACILITIES
FOR QUARTER ENDING
SEPTEMBER 1986

	ADMISSIONS - UNITED STATES	DOD TOTAL	ARMY FACILITIES	NAVY FACILITIES	AIR FORCE FACILITIES
10	NUMBER OF ADMISSIONS	194,584	86,309	43,237	65,038
11	ADMISSIONS OF US ACTIVE DUTY UNIFORMED PERSONNEL	58,267	24,043	18,182	16,042
	A MILITARY	57,759	23,923	17,923	15,913
	(1) ARMY	22,407	20,844	539	1,024
	(2) NAVY-MARINE CORPS	19,523	1,589	16,961	973
	(3) AIR FORCE	15,829	1,490	423	13,916
	B OTHER UNIFORMED PERSONNEL (PHS.CG.NOAA)	508	120	259	129
12	ADMISSIONS OF RETIRED US UNIFORMED PERSONNEL	25,200	12,216	4,475	8,509
	A ADMISSIONS OF RETIRED MILITARY	24,998	12,147	4,402	8,449
	(1) ARMY	10,498	8,250	642	1,606
	(2) NAVY-MARINE CORPS	5,774	1,410	3,134	1,230
	(3) AIR FORCE	8,726	2,487	626	5,613
	B ADMISSIONS OF OTHER RETIRED UNIFORMED PERSONNEL (PHS.CG.NOAA)	202	69	73	60
13	ADMISSIONS OF DEPENDENTS OF US ACTIVE DUTY PERSONNEL (PHS.CG.NOAA)	76,066	31,996	15,277	28,793
	A ARMY	28,824	25,792	655	2,387
	B NAVY-MARINE CORPS	19,887	2,238	14,053	2,396
	C AIR FORCE	27,345	2,966	569	24,010
14	ADMISSIONS OF DEPENDENTS OF RETIRED AND DECEASED US MILITARY PERSONNEL	25,935	11,453	4,390	10,092
	A ARMY	10,246	7,699	649	1,898
	B NAVY-MARINE CORPS	5,840	1,280	3,098	1,462
	C AIR FORCE	9,849	2,474	643	6,732
15	ADMISSIONS OF DEPENDENTS OF OTHER UNIFORMED PERSONNEL (PHS.CG.NOAA)	860	261	236	363
16	ADMISSIONS OF ALL OTHER BENEFICIARIES	8,256	6,340	677	1,239

TABLE 2 3
DEPARTMENT OF DEFENSE
SELECTED DATA CONCERNING MEDICAL CARE
PROVIDED AT FIXED MILITARY FACILITIES
FOR QUARTER ENDING
SEPTEMBER 1986

ADMISSIONS - OUTSIDE UNITED STATES		DOC TOTAL	ARMY FACILITIES	NAVY FACILITIES	AIR FORCE FACILITIES
10	NUMBER OF ADMISSIONS	38,180	20,334	7,352	10,494
11	ADMISSIONS OF US ACTIVE DUTY UNIFORMED PERSONNEL	14,748	7,858	3,032	3,858
	A MILITARY	14,730	7,858	3,016	3,856
	(1) ARMY	7,613	7,030	65	518
	(2) NAVY-MARINE CORPS	3,098	171	2,656	271
	(3) AIR FORCE	4,019	657	295	3,067
	B OTHER UNIFORMED PERSONNEL (PHS CG NOAA)	18	0	16	2
12	ADMISSIONS OF RETIRED US UNIFORMED PERSONNEL	873	384	227	262
	A ADMISSIONS OF RETIRED MILITARY	870	384	224	262
	(1) ARMY	487	300	91	54
	(2) NAVY-MARINE CORPS	126	71	117	48
	(3) AIR FORCE	260	63	15	160
	B ADMISSIONS OF OTHER RETIRED UNIFORMED PERSONNEL (PHS CG NOAA)	6	0	3	0
13	ADMISSIONS OF DEPENDENTS OF US ACTIVE DUTY PERSONNEL (PHS CG NOAA)	10,111	10,865	5,618	5,739
	A ARMY	10,111	9,416	191	774
	B NAVY-MARINE CORPS	1,414	117	2,624	161
	C AIR FORCE	1,000	1,112	2,901	4,704
14	ADMISSIONS OF DEPENDENTS OF RETIRED AND DEPARTING US MILITARY PERSONNEL	675	1,032	217	206
	A ARMY	1	155	9	18
	B NAVY-MARINE CORPS	1	1	105	74
	C AIR FORCE	1,000	111	108	94
15	ADMISSIONS OF DEPENDENTS OF OTHER UNIFORMED PERSONNEL (PHS CG NOAA)	12	1	14	14
16	ADMISSIONS OF ALL OTHER BENEFIT ELIGIBLE	1,000	104	144	415

TABLE 3.1
DEPARTMENT OF DEFENSE
SELECTED DATA CONCERNING MEDICAL CARE
PROVIDED AT FIXED MILITARY FACILITIES
FOR QUARTER ENDING
SEPTEMBER 1986

-----		-----		-----		-----		-----	
OUTPATIENT VISITS - WORLDWIDE		DOD		NAVY		ARMY		AIR FORCE	
		TOTAL		FACILITIES		FACILITIES		FACILITIES	
17.	NUMBER OF OUTPATIENT VISITS	-	TOTAL	5,109,668	2,884,216	3,942,091			
18.	OUTPATIENT VISITS BY US ACTIVE DUTY UNIFORMED PERSONNEL	-	TOTAL	4,787,043	1,385,730	1,331,435			
	A. MILITARY	-	TOTAL	4,751,633	1,360,460	1,326,833			
	(1) ARMY			2,030,176	21,055	48,288			
	(2) NAVY-MARINE CORPS			1,402,193	1,321,492	32,993			
	(3) AIR FORCE			1,319,264	17,913	1,245,572			
	B. OTHER UNIFORMED PERSONNEL (PHS.CG.NOAA)	-	TOTAL	35,410	25,270	4,602			
19.	OUTPATIENT VISITS BY RETIRED US UNIFORMED PERSONNEL	-	TOTAL	1,049,309	180,729	400,404			
20.	OUTPATIENT VISITS BY DEPENDENTS OF US ACTIVE DUTY UNIFORMED PERSONNEL	-	TOTAL	3,837,979	739,583	1,480,284			
	A. DEPENDENTS OF MILITARY PERSONNEL	-	TOTAL	3,812,067	729,908	1,470,642			
	(1) ARMY			1,529,459	30,501	87,120			
	(2) NAVY-MARINE CORPS			819,336	669,294	63,371			
	(3) AIR FORCE			1,463,272	30,113	1,320,151			
	B. DEPENDENTS OF OTHER UNIFORMED PERSONNEL (PHS.CG.NOAA)	-	TOTAL	25,912	9,675	9,642			
21.	OUTPATIENT VISITS BY DEPENDENTS OF RETIRED AND DECEASED US UNIFORMED PERSONNEL	-	TOTAL	1,336,256	216,565	586,828			
22.	OUTPATIENT VISITS BY ALL OTHER BENEFICIARIES	-	TOTAL	925,388	361,609	143,140			
23.	NUMBER OF LIVE BIRTHS	-	TOTAL	27,598	5,909	10,115			

**OUTPATIENT VISITS—PERCENT OF WORLDWIDE TOTAL
QUARTER ENDING SEPTEMBER 30, 1986**

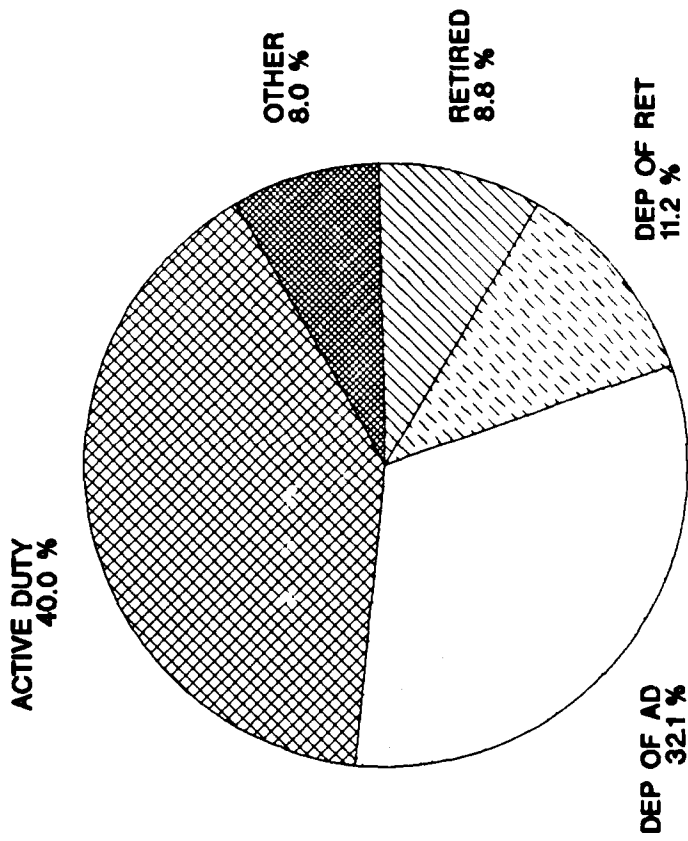


FIGURE 3.1

TABLE 3.2
DEPARTMENT OF DEFENSE
SELECTED DATA CONCERNING MEDICAL CARE
PROVIDED AT FIXED MILITARY FACILITIES
FOR QUARTER ENDING
SEPTEMBER 1986

OUTPATIENT VISITS - UNITED STATES		DOD TOTAL	ARMY FACILITIES	NAVY FACILITIES	AIR FORCE FACILITIES
17.	NUMBER OF OUTPATIENT VISITS	10,024,226	4,075,850	2,609,657	3,338,719
18.	OUTPATIENT VISITS BY US ACTIVE DUTY UNIFORMED PERSONNEL				
	- TOTAL	3,834,438	1,529,012	1,255,069	1,050,357
A.	MILITARY	3,799,902	1,523,492	1,230,516	1,045,894
	(1) ARMY	1,485,886	1,437,867	16,811	31,108
	(2) NAVY-MARINE CORPS	1,272,590	43,659	1,203,604	25,327
	(3) AIR FORCE	1,041,426	41,966	10,001	989,459
B.	OTHER UNIFORMED PERSONNEL (PHS.CG.NOAA)	34,536	5,520	24,553	4,463
19.	OUTPATIENT VISITS BY RETIRED US UNIFORMED PERSONNEL	1,019,273	455,578	171,821	391,874
20.	OUTPATIENT VISITS BY DEPENDENTS OF US ACTIVE DUTY UNIFORMED PERSONNEL	3,034,521	1,192,253	641,997	1,200,271
A.	DEPENDENTS OF MILITARY PERSONNEL	3,009,719	1,185,669	632,974	1,191,076
	(1) ARMY	1,100,879	1,013,040	24,183	63,656
	(2) NAVY-MARINE CORPS	734,144	83,047	593,111	57,986
	(3) AIR FORCE	1,174,696	89,582	15,680	1,069,434
B.	DEPENDENTS OF OTHER UNIFORMED PERSONNEL (PHS.CG.NOAA)	24,802	6,584	9,023	9,195
21.	OUTPATIENT VISITS BY DEPENDENTS OF RETIRED AND DECEASED US UNIFORMED PERSONNEL	1,306,785	523,076	205,490	578,219
22.	OUTPATIENT VISITS BY ALL OTHER BENEFICIARIES	829,209	375,931	335,280	117,998
23.	NUMBER OF LIVE BIRTHS	21,773	8,474	4,668	8,631

TABLE 3.3
 DEPARTMENT OF DEFENSE
 SELECTED DATA CONCERNING MEDICAL CARE
 PROVIDED AT FIXED MILITARY FACILITIES
 FOR QUARTER ENDING
 SEPTEMBER 1986

	OUTPATIENT VISITS - OUTSIDE UNITED STATES	DOD TOTAL	ARMY FACILITIES	NAVY FACILITIES	AIR FORCE FACILITIES
17.	NUMBER OF OUTPATIENT VISITS	- TOTAL 1,911,749	1,033,818	274,559	603,372
18.	OUTPATIENT VISITS BY US ACTIVE DUTY UNIFORMED PERSONNEL	- TOTAL 952,605	540,866	130,661	281,078
A.	MILITARY	- TOTAL 951,731	540,848	129,944	280,939
	(1) ARMY	544,290	522,986	4,144	17,160
	(2) NAVY-MARINE CORPS	129,603	4,049	117,888	7,666
	(3) AIR FORCE	277,838	13,813	7,912	256,113
B.	OTHER UNIFORMED PERSONNEL (PHS,CG,NOAA)	- TOTAL 874	18	717	139
19.	OUTPATIENT VISITS BY RETIRED US UNIFORMED PERSONNEL	- TOTAL 30,036	12,598	8,908	8,530
20.	OUTPATIENT VISITS BY DEPENDENTS OF US ACTIVE DUTY UNIFORMED PERSONNEL	- TOTAL 803,458	425,859	97,586	280,013
A.	DEPENDENTS OF MILITARY PERSONNEL	- TOTAL 802,348	425,848	96,934	279,566
	(1) ARMY	428,580	398,798	6,318	23,464
	(2) NAVY-MARINE CORPS	85,192	3,624	76,183	5,385
	(3) AIR FORCE	288,576	23,426	14,433	250,717
B.	DEPENDENTS OF OTHER UNIFORMED PERSONNEL (PHS,CG,NOAA)	- TOTAL 1,110	11	652	447
21.	OUTPATIENT VISITS BY DEPENDENTS OF RETIRED AND DECEASED US UNIFORMED PERSONNEL	- TOTAL 29,471	9,787	11,075	8,609
22.	OUTPATIENT VISITS BY ALL OTHER BENEFICIARIES	- TOTAL 96,179	44,708	28,329	25,142
23.	NUMBER OF LIVE BIRTHS	- TOTAL 5,825	3,100	1,241	1,484

GLOSSARY

Admission. An admission is the act of placing an individual under treatment or observation in a medical center or a hospital. The day of admission is the day on which the medical center or hospital makes a formal acceptance of the patient who is to be provided with room, board, and continuous nursing service in an area of the hospital where patients normally stay at least overnight. If both an admission and discharge occur on the same day, then that day is considered as a day of admission and shall be counted as one occupied bed day. The admission of a newborn is deemed to occur at time of birth.

Live Births. A live birth is the complete expulsion or extraction from its mother of a product of conception, irrespective of the duration of pregnancy which after such separation, breathes or shows any other evidence of life such as beating of the heart, pulsation of the umbilical cord, or definite movement of voluntary muscles, whether or not the umbilical cord has been cut, or the placenta is attached; each such product of such a birth is considered liveborn.

Occupied Bed. A bed assigned as of midnight to a patient, to include a patient on pass or liberty not in excess of 72 hours, and any bassinets assigned to a newborn infant whose mother has been discharged from the hospital. The definition excludes: any bed assigned to a patient subsisting out, on leave, or absent without leave, and any bed occupied by a transient patient.

Operating Bed. A bed that is currently set up and ready in all respects for the care of a patient. It must include supporting space, equipment and staff to operate under normal circumstances. Excluded are nursery bassinets and transient patients' beds.

Operating Bassinet. A bed designed for the care of an infant that is currently set up in the newborn nursery and ready in all respects for use. It must include support space, equipment and staff to operate under normal circumstances. Excluded are infant transporters.

Outpatient Visits. Visits made to each dispensary or separate, organized clinic of a fixed medical treatment facility for medical advice, examination, diagnosis, treatment, evaluation, consultation, or counseling, including visits by military patients who are excused from duty for medical reasons but who have not been admitted for inpatient care in a facility authorized beds for inpatient care and any visits made incident to complete physicals or flight physicals.

E
ED
87