

NO-A176 624

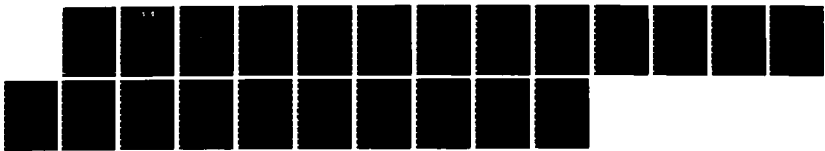
THE UNIVERSAL TRANSVERSE MERCATOR GRID FORMULAS FOR
CARTOGRAPHIC APPLICATIONS PROGRAMMERS(U) DEFENSE
MAPPING AGENCY INTER AMERICAN GEODETIC SURVEY APO NHA.
L P O'BRIEN 31 JUL 86

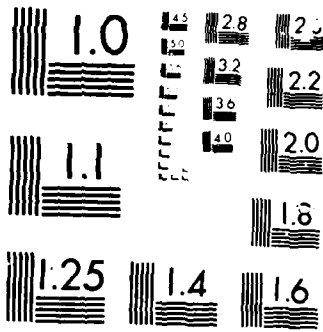
1/1

UNCLASSIFIED

F/G 8/2

NL





1

DTIC
ELECTE
FEB 11 1987
S D
D

AD-A176 624

The Universal Transverse Mercator
Grid Formulas for Cartographic
Applications Programmers

BY LIAM P. O'BRIEN
DMA IAGS Chile Project
31 July, 1986

DTIC FILE COPY

DISTRIBUTION STATEMENT A
Approved for public release;
Distribution Unlimited

86 5300

87 1 8 053

7

REPORT DOCUMENTATION PAGE		READ INSTRUCTIONS BEFORE COMPLETING FORM
1. REPORT NUMBER	2. GOVT ACCESSION NO.	3. RECIPIENT'S CATALOG NUMBER
4. TITLE (and Subtitle) The Universal Transverse Mercator Grid formulas for cartographic applications programmers.		5. TYPE OF REPORT & PERIOD COVERED
7. AUTHOR(s) Liam P. O'Brien		6. PERFORMING ORG. REPORT NUMBER
9. PERFORMING ORGANIZATION NAME AND ADDRESS DMA IAGS Chile Project APO Miami, Fla. 34033		8. CONTRACT OR GRANT NUMBER(s)
11. CONTROLLING OFFICE NAME AND ADDRESS		10. PROGRAM ELEMENT, PROJECT, TASK AREA & WORK UNIT NUMBERS
12. REPORT DATE July 31, 1986		13. NUMBER OF PAGES 18
14. MONITORING AGENCY NAME & ADDRESS (if different from Controlling Office)		15. SECURITY CLASS. (of this report) Unclassified
16. DISTRIBUTION STATEMENT (of this Report)		15a. DECLASSIFICATION/DOWNGRADING SCHEDULE
<div style="border: 1px solid black; padding: 5px; width: fit-content; margin: 0 auto;"> <p>DISTRIBUTION STATEMENT A Approved for public release; Distribution Unlimited</p> </div>		
17. DISTRIBUTION STATEMENT (of the abstract entered in Block 20, if different from Report)		
18. SUPPLEMENTARY NOTES To be translated to the Spanish Language and published in the "Boletin de la Asociación de Estudiantes de Cartografia", December, 1986.		
19. KEY WORDS (Continue on reverse side if necessary and identify by block number) Universal Transverse Mercator grid system is described and the formulas are presented. Sample programs in BASIC are included.		
20. ABSTRACT (Continue on reverse side if necessary and identify by block number) Cartographers frequently need to transform geographic coordinates, via a projection system, to their corresponding rectangular coordinates. The traditional method of using look up tables is no longer efficient. We now can use hand held microcomputers and programmable calculators to do the coordinate transformations. A problem has been the difficulty in locating concise, easy to program transformation formulas.		

(OVER)

This paper presents easy to program formulas for the Universal Transverse Mercator Grid (UTM grid).

The paper begins with a short history of the development of the UTM grid system and then states its basic characteristics.

Following this the forward and inverse transformation formulas are presented. The last section contains two features of aid to the programmer. These are sample programs, written in BASIC and numerical examples.

↑

Cartographers involved in national mapping programs frequently need to transform geographic coordinates, by way of a specific projection system, to their corresponding rectangular coordinates. They may want to plot control points or construct graticules of meridians and of latitude. Until recently this was a time consuming chore. Now, with the proliferation of hand held microcomputers and programmable calculators, this once tedious job is performed quickly and accurately. In the time it took to transform one set of geographic coordinates into rectangular coordinates using projection tables we now can perform many. But there is one problem that is holding back the greater use of hand held computers. This problem is the difficulty in locating concise, easy to program transformation formulas.

The purpose of this article is to provide Cartographers with the transformation equations for the most widely used grid system, the Universal Transverse Mercator grid system (UTM grid).

The equations perform forward transformations; geographic coordinates to UTM grid coordinates, and inverse transformations; UTM grid coordinates to geographic coordinates. These equations are notable for the ease of which they can be programmed.

The article begins with a short history of the development of the UTM grid system and then states its basic characteristics. Following this the forward and inverse transformations are presented. The last section of this article contains two features that will be of aid to the programmer. These are sample programs, written in BASIC for a Casio programmable calculator, and numerical examples using the formulas.

etc on file



Availability Codes	
Dist	Avail and/or Special
A-1	

The history of the development of the UTM grid system

The Transverse Mercator projection is used in the UTM grid system. The Transverse Mercator projection evolved from the regular Mercator projection, named after the Flemish cartographer Gerhardus Mercator (Gerhard Kremer, 1512 - 1594).

The development of the Mercator projection can be represented geometrically by viewing a cylinder that is wrapped around the globe and tangent to the Equator. (see figure 1). A light source approximately 3/4 of the way back along the diameter can be seen as projecting the earth's features out on to the cylinder. The cylinder is then cut and laid out flat to form the map. The feature that is interesting to us here is that there is very little scale distortion close to the standard line, the Equator.

The Transverse Mercator was developed to take advantage of this feature. If you take the cylinder and rotate it 90° you effectively trace a meridian the standard line (see figure 1). This makes the Transverse Mercator useful in mapping narrow, North-South orientated features.

The spherical form of the Transverse Mercator projection was first developed by Johann Heinrich Lambert (1728 - 1777), an Alsatian mathematician, astronomer, physicist and philosopher. His work, *Beiträge*, published in 1772 contained six new map projections and included the Transverse Mercator and the Lambert Conformal Conic. It is interesting to note that the Lambert Conformal Conic and a modified ellipsoidal form of the Transverse Mercator, the UTM, are the two most widely used projections for large and medium scale mapping in Latin America today.

After Lambert, the Transverse Mercator was worked on by the great German mathematician, Johann Karl Friedrich Gauss (1777 - 1855). It wasn't until 1912 and 1919 that L. Krüger published his studies that for the first time stated the

Transverse Mercator ellipsoidal formulas. Because of the work of Gauss and Kruger the Transverse Mercator is sometimes referred to as the Gauss-Kruger projection.

The UTM grid system, which is based on the ellipsoidal form of the Transverse Mercator projection, grew out of the military need for a worldwide plane coordinate system. The ideal universal plane coordinate system was seen as containing the following properties; conformality, continuity over large areas, a minimum number of zones, minimal scale errors, a unique referencing system, uniform transformation formulas and a maximum meridional convergence of five degrees. Based on these criteria, in the late forties the U.S. Army Map Service devised the UTM grid. Today the UTM grid system and its companion system, the Universal Polar Stereographic (UPS), for use in the polar regions, are used extensively in the Americas, Europe and Russia for surveying, mapping and military purposes.

Basic characteristics of the UTM grid system

The UTM grid system is made up of sixty zones each covering six degrees of longitude. The zones are numbered one through sixty starting at 180° west from Greenwich and increasing to the east. The zones extend in latitude from 84°N to 80°S (see figure 2).

Each UTM grid zone is bisected by a central meridian which becomes the Y axis origin of the projection. The central meridian is assigned a value of 500,000 meters in order to avoid the use of negative numbers. Along the central meridian a scale factor of 0.9996 is employed. Because of this the central meridian is not a standard line. The effect of using a scale factor of less than one is to create two standard lines, in this case standard meridians, spaced 180 km east and west of the central meridian. By having two standard meridians the scale retention characteristics of the UTM are greatly improved.

(see figures 3 and 4).

The X axis origin is the Equator. When working in the northern hemisphere the Equator is assigned a value of zero. In the southern hemisphere the Equator is given a false value of 10,000,000 meters. The false value is applied to avoid the use of negative numbers.

The UTM Equations

The following formulas are taken from the publication, "Map Projections used by the U.S. Geological Survey" second edition, 1984. They are presented here in a modified form.

Symbols

a= Semimajor axis of the reference ellipsoid

b= Semiminor axis of the reference ellipsoid

e= Eccentricity $= (1 - b^2/a^2)^{1/2}$.

x= Rectangular coordinate: the distance to the right of the vertical line (the y axis) passing through the origin of the projection, the central meridian.

y= Rectangular coordinate: the distance above the horizontal line (the x axis) passing through the origin of the projection, the Equator.

k= The relative scale factor along a parallel of latitude.

k_c = The scale factor of the central meridian. $k_c = 0.9996$.

ϕ = The latitude of the point. For a latitude south of the Equator apply a minus sign.

ϕ_0 = The latitude of the origin. 0° in the UTM system.

λ = The longitude of the point. For longitude west of Greenwich apply a minus sign.

λ_0 = The longitude of the origin, the central meridian. For longitude west of Greenwich, apply a minus sign.

THE FORWARD EQUATIONS FOR THE UTM GRID

Easting = 500,000 + x

Northing = y, in the northern hemisphere

Northing = 10,000,000 + y, in the southern hemisphere

$$x = k_0 N [A + (1 - T + C)A^3/6 + (5 - 18T + T^2 + 72C - 58e'^2)A^5/120]$$

$$y = k_0 \{ M + N \tan \varphi [A^2/2 + (5 - T + 9C + 4C^2)A^4/24 + (61 - 58T + T^2 + 600C - 330e'^2)A^6/720] \}$$

$$k = k_0 [1 + (1 + C)A^2/2 + (5 - 4T + 42C + 13C^2 - 28e'^2)A^4/24 + (61 - 148T + 16T^2)A^6/720]$$

Where $k_0 = 0.9996$

$$e'^2 = e^2 / (1 - e^2)$$

$$N = a / (1 - e^2 \sin^2 \varphi)^{1/2}$$

$$T = \tan^2 \varphi$$

$$C = e'^2 \cos^2 \varphi$$

$A = \cos \varphi (\lambda - \lambda_0)$, with λ and λ_0 in radians.

$$M = a \left[(1 - e^2/4 - 3e^4/64 - 5e^6/256 - \dots) \varphi - (3e^2/8 + 3e^4/32 + 45e^6/1024 + \dots) \sin 2\varphi + (15e^4/256 + 45e^6/1024 + \dots) \sin 4\varphi - (35e^6/3072 + \dots) \sin 6\varphi + \dots \right]$$

With φ in radians.

THE INVERSE EQUATIONS FOR THE UTM GRID

$\vartheta = \vartheta_1 - (N_1 \tan \vartheta_1 / R_1) [D^2/2 - (5+3T_1 + 10C_1 - 4C_1^2 - 9e'^2) D^4/24 + (61 + 90T_1 + 298C_1 + 45T_1^2 - 252e'^2 - 3C_1^2) D^6/720]$, where ϑ is in radians. To convert to degrees multiply ϑ by $180/\pi$.

$\lambda = \lambda_0 + [D - (1 + 2T_1 + C_1) D^3/6 + (5 - 2C_1 + 28T_1 - 3C_1^2 + 8e'^2 + 24T_1^2) D^5/120] / \cos \vartheta_1$, where λ is in radians. To convert to degrees multiply λ by $180/\pi$.

Where ϑ_1 is the foot point latitude of the perpendicular from the central meridian.

$$\vartheta_1 = \mu + (3e_1/2 - 27e_1^3/32 + \dots) \sin 2u + (21e_1^2/16 - 55e_1^4/32 - \dots)$$

$\sin 4u + (151e_1^3/96 + \dots) \sin 6u + \dots$, where ϑ is computed in radians and then converted to degrees by multiplying by $180/\pi$.

Where

$$e_1 = [1 - (1 - e^2)^{\frac{1}{2}}] / [1 + (1 - e^2)^{\frac{1}{2}}]$$

$\mu = N / [a(1 - e^2/4 - 3e^4/64 - 5e^6/256 - \dots)]$, where μ is in radians.

$$N = y/k_0$$

$$k_0 = .9996$$

With ϑ_1 known, the other terms are calculated for use in the equations ϑ and λ .

$$e'^2 = e^2 / (1 - e^2)$$

$$C_1 = e'^2 \cos^2 \vartheta_1$$

$$T_1 = \tan^2 \vartheta_1$$

$$N_1 = a / (1 - e^2 \sin^2 \vartheta_1)^{\frac{1}{2}}$$

$$R_1 = a(1 - e^2) / (1 - e^2 \sin^2 \vartheta_1)^{\frac{3}{2}}$$

$$D = x / (N_1 k_0)$$

y = The northing in the northern hemisphere

y = The northing - 10,000,000 in the southern hemisphere

x = Easting - 500,000

The UTM coordinate transformation programs

The two programs presented are written in BASIC for the Casio FX-801P Programmable Calculator. They perform the forward and inverse transformations.

The programs operate interactively. The forward transformation begins by inquiring of the user which reference ellipsoid he wishes to use. This is accomplished by the interrogative "A=" and "E CUADRADO=". A is the semimajor axis of the reference ellipsoid and E CUADRADO is the eccentricity squared. These values for four reference ellipsoids common to Latin America are given in table 1. A and e^2 need to be entered only once. The program will skip these inquiries on the second point transformation. After entering the ellipsoid constants the program will ask for the "LAT DEL PUNTO" and the "LON DEL PUNTO" - the latitude and longitude are entered in the following manner. To enter $35^\circ 22' 14.22''$ N you press 35 then execute, 22 then execute and 14.22 and execute. To enter a point located in the southern hemisphere or west of Greenwich, you must apply a minus sign. $75^\circ 34' 20''$ would be entered as -75 execute, -34 execute, -20 execute. Once the latitude and longitude are entered the program will ask for the "MERIDIANO CENTRAL". This is entered as two digits. For example 69° W will be entered as -69 execute. After this the transformation calculations will be performed and the answer displayed.

The display sequence is as follows; "N=" and the Northing will appear. Press the continue key and "E=" and the Easting will appear.

After the Easting is displayed the program will begin again by asking for the latitude, longitude and the central meridian of the next point.

The inverse transformation program, like the forward program starts by asking for "A=" and "E CUADRADO=". The program then asks for the Northing as "NORTE CUTM=", and the Easting as "ESTE CUTM". After this the program will ask for the "MERIDIANO CENTRAL". This is entered as two digits, like in the forward program. Finally, the program will ask for the hemisphere in which the point lies. The statement "HEMISFERIO N O S" will appear. Enter N if you are in the northern hemisphere or S for the south. After the transformations are complete the results will be displayed in the following manner. "LATITUD =" will appear. Press the continue key to display the results. Press continue again and "LONGITUD=" will appear. Press continue to see the results. If you wish to transform more points press continue and the program will ask you for the Northing, Easting, central meridian and hemisphere of the next point.

The UTM Forward Program

```

LIST
10 PAC :MODE 5:IMP
   "A=",B:IMP "E
   CUADRADO=",E
20 IMP "LAT DEL PU
   NTO":G,R,S:IMP
   "LON DEL PUNTO=
   "X,Y,Z
30 G=DEG(G,R,S)/(1
   80/X):F=DEG(X,Y
   ,Z):IMP "MERIDI
   ANO CENTRAL=",E
40 F=E/(1-E):K=.99
   55:M=B/SQR (1-E
   *SIN G):T=TAN
   G/2
50 C=F*COS Q:2:A=C
   OS Q*(F-E)*X/18
   0
60 H=(1-E/4-3*E^2/
   64-5*E^3/256)*Q
70 I=(3*E/8+3*E^2/
   32+45*E^3/1824)
   *SIN (2*Q)
80 J=(15*E^2/256+4
   5*E^3/1824)*SIN
   (4*Q)
90 M=K*(1+I+(15
   *E^3/3872)*SIN
   (6*Q))
100 N=R^2/2+(5-T)*
   C+(C^2)*R^4/24
110 J=K*(61-58*T+T^
   2+M*(C-3)*F)*
   R^6/720
120 Y=K*(M*TAN Q+
   I):IF Q>0 THEN
   140
130 Y=10^7+Y
140 K=K*(1-T+C)*R^3
   /6+(5-18*T+T^2+
   72*C-58*F)*R^5/
   120
150 G=5*10^5+K*M*H
)
160 PRT "N=":Y:PRT
   "E=":C:GOTO 20
    
```

The UTM Inverse Program

```

LIST
10 PAC :IMP "A=":A
   :IMP "E CUADRADO
   "O=":E
20 IMP "NORTE C.U.
   T.R.=":G:IMP "E
   STE C.U.T.R.=":
   S
30 IMP "MERIDIANO
   CENTRAL=":G:IMP
   "HEMISFERIO M
   "O S":Y
40 MODE 5:G=5-5*10
   5:IF Y=M THEN
   50
45 G=0-10^7
50 F=.9996:M=0/K:U
   =A/(1-E/4-3*
   E^2/64-5*E^3/25
   6)
60 B=(1-1-E/4-5*E^
   2/16)/(1-1-E/4-5
   *E^2/16)
70 H=U+(3*B/2-27*B
   ^3/32)*SIN (3*U)
)
80 I=(21*B^2/16-55
   *B^4/32)*SIN (4
   *U)
90 G=H+(15)*B^3
   /56*SIN (6*U)
   *180/X:MODE 4
100 F=E/(1-E):C=F*O
   OS Q:2:N=A/(1-E
   *SIN Q):2:S:T=
   TAN Q/2
110 P=K*(1-E)/(1-E
   *SIN Q):1.5:
   D=5/(M*K)
120 H=0^2/2-(5-S*T+
   1)*C-(C^2)*F)
   *U^4/24
130 J=(61-58*T+29*
   C+45*T^2-352*F-
   3*C^2)*U^6/720
140 J=0-M*TAN Q/P)
   *H*I:=180/X
150 H=5-2*(C+2)*T-3*
   C^2+6*F+2*U^2
160 L=6*(0-(1+2*T+C
   *D^3/6+M*U^5/1
   20)/COS Q:=180/X
170 PRT "LATITUD=":
   DMS J:PRT "LONGE
   ITUD=":DMS L:GO
   TO 20
    
```

Numerical Examples

UTM Forward Equations

Given: Clarke 1866 ellipsoid: $a=6378206.4\text{m}$
 $e^2=0.00676866$

Central meridian:
UTM Zone 18: $\lambda_0=75^\circ$ West longitude

Central meridian
Scale factor: $k_0=0.9996$

Point: $\phi=40^\circ 30'$ North latitude
 $\lambda=73^\circ 30'$ West longitude

Find: x, y, k

$$e'^2 = 0.00676866 / (1 - 0.00676866) = 0.0068148$$

$$N = 6378206.4 / (1 - 0.00676866 \sin^2 40.5^\circ)^{1/2} = 6387330.5\text{m}$$

$$T = \tan^2 40.5^\circ = 0.7294538$$

$$C = 0.0068148 \cos^2 40.5^\circ = 0.0039404$$

$$A = (\cos 40^\circ 30') \times [(-73.5^\circ) - (-75^\circ)] \pi / 180^\circ = 0.0199074$$

$$M = 6378206.4 \left[(1 - 0.00676866/4 - 3 \times 0.00676866^2/64 - 5 \times 0.00676866^4/256) \times (40.5^\circ) - \right. \\ \left. (3 \times 0.00676866/8 + 3 \times 0.00676866^2/32 + 45 \times 0.00676866^4/1024) \times \sin(2 \times 40.5^\circ) - \right. \\ \left. (15 \times 0.00676866^2/256 + 45 \times 0.00676866^4/1024) \times \sin(4 \times 40.5^\circ) - (35 \times 0.00676866^7/3072) \times \right. \\ \left. \sin(6 \times 40.5^\circ) \right] \pi / 180^\circ = 4,484,837.67\text{m}$$

$$x = 0.9996 \times 6387330.5 \times \left[0.0199074 + (1 - 0.7294538 + 0.0039404) \times 0.0199074^3 / 6 - \right. \\ \left. (5 - 18 \times 0.7294538 + 0.7294538^2 + 72 \times 0.0039404 - 58 \times 0.0068148) \times 0.0199074^5 / 120 \right] \\ = 127,106.5\text{m}$$

$$y = 0.9996 \times \left\{ -484837.7 - 0 + 6387330.5 \times 0.8540807 \times \left[0.0199074^2 / 2 + (5 - 0.7294538 + 9 \times \right. \right. \\ \left. \left. 0.0039404 + 4 \times 0.0039404^2) \times 0.0199074^4 / 24 + (61 - 58 \times 0.7294538 + 0.7294538^2 + \right. \right. \\ \left. \left. 600 \times 0.0039404 - 330 \times 0.0068148) \times 0.0199074^6 / 720 \right] \right\} \\ = 4,484,124.4\text{m}$$

$$k = 0.9996 \times \left[1 + (1 + 0.0068148 \cos^2 40.5^\circ) \times 127106.5^2 / (2 \times 0.9996^2 \times 6387330.5^2) \right] \\ = 0.9997989$$

$$\text{Northing} = 4,484,124.4\text{m}$$

$$\text{Easting} = 500,000 + 127,106.5 = 627,106.5\text{m}$$

UTM Inverse Equations

Given: Clarke 1866 ellipsoid: $a=6378206.4\text{m}$
 $e^2=0.00676866$

Central meridian:
 UTM Zone 18: $\lambda_0=75^\circ$ West longitude

Central meridian
 Scale factor: $k_0=0.9996$

Point: Northing = 4484124.4 m
 Easting = 627106.5 m

Find: ϕ, λ

$$x = 627106.5 - 500000 = 127106.5 \text{ m}$$

$$y = 4484124.4 \text{ m}$$

$$e'^2 = 0.00676866 / (1 - 0.00676866) = 0.0068148$$

$$M = 0 + 4484124.4 / 0.9996 = 4485918.8 \text{ m}$$

$$e_1 = [1 - (1 - 0.00676866)^{1/2}] / [1 + (1 - 0.00676866)^{1/2}] = 0.001697916$$

$$\mu = 4485918.8 / [6378206.4 \times (1 - 0.00676866/4 - 3 \times 0.00676866^2/64 - 5 \times 0.00676866^3/256)]$$

$$= 0.7045135 \text{ radian}$$

$$\phi_1 = 0.7045135 + (3 \times 0.001697916/2 - 27 \times 0.001697916^3/32) \sin(2 \times 0.7045135) +$$

$$(21 \times 0.001697916^2/16 - 55 \times 0.001697916^4/32) \sin(4 \times 0.7045135) + (151 \times 0.001697916^5/96)$$

$$\sin(6 \times 0.7045135) = 0.7070283 \text{ radian} = 0.7070283 \times 180^\circ/\pi = 40.5097362^\circ$$

$$C_1 = 0.0068148 \cos^2 40.5097362^\circ = 0.0039393$$

$$T_1 = \tan^2 40.5097362^\circ = 0.7299560$$

$$N_1 = 6378206.4 / (1 - 0.00676866 \sin^2 40.5097362^\circ)^{1/2} = 6387334.2 \text{ m}$$

$$R_1 = 6378206.4 \times (1 - 0.00676866) / (1 - 0.00676866 \sin^2 40.5097362^\circ)^{3/2} = 6,362,271.4 \text{ m}$$

$$D = 127106.5 / (6387334.2 \times 0.9996) = 0.0199077$$

$$\phi = 40.5097362^\circ - (6387334.2 \times 0.8543746 / 6362271.4) \times [0.0199077^2/2 - (5 + 3 \times 0.7299560 + 10$$

$$\times 0.0039393 - 4 \times 0.0039393^2 - 9 \times 0.0068148) \times 0.0199077^4/24 + (61 + 90 \times 0.7299560 + 298$$

$$\times 0.0039393 - 45 \times 0.7299560^2 - 252 \times 0.0068148 - 3 \times 0.0039393^2) \times 0.0199077^6/720 \times 180^\circ/\pi$$

$$= 40.5000000^\circ = 40^\circ 30' \text{ North latitude}$$

$$\lambda = -75^\circ - \{ [0.0199077 - (1 + 2 \times 0.7299560 + 0.0039393) \times 0.0199077^3/6 + (5 - 2 \times 0.0039393 -$$

$$28 \times 0.7299560 - 3 \times 0.0039393^2 + 8 \times 0.0068148 + 24 \times 0.7299560^2) \times 0.0199077^5/120] / \cos$$

$$40.5097362^\circ \} \times 180^\circ/\pi = -75^\circ + 1.5000000^\circ = -73.5^\circ = 73^\circ 30' \text{ West longitude}$$

Table 1

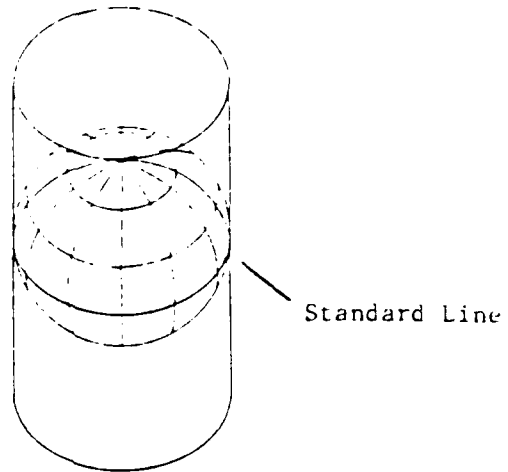
Constants for Reference Ellipsoids Common to Latin America

<u>Reference Ellipsoid</u>	<u>Semimajor Axis a</u>	<u>Excentricity Squared e^2</u>
Clarke 1866	6378206.4	0.0067686580
Internacional	6378388	0.0067226700
South American 1969	6378160	0.0066945419
WGS 72	6378135	0.0066943178

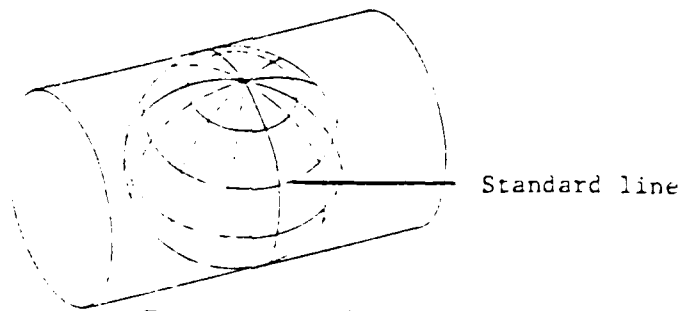
References

1. Army, Department of the, 1967, Grids and Grid References: U.S. Army Tech. Manual TM 5-241-1.
2. Army, Department of the, 1973, Universal Transverse Mercator Grid: U.S. Army Tech. Manual TM-241-8
3. McDonnell, P.W. Jr., 1979, Introduction to Map Projections: New York, Marcel Dekker, Inc.
4. Richardus, Peter, and Adler, R.K. 1972, Map Projections for Geodesists, Cartographers, and Geographers: Amsterdam, North-Holland Pub. Co.
5. Robinson, A.H., Sale, R.D., and Morrison, J.L. 1984, Elements of Cartography (5th ed.): New York, John Wiley and Sons.
6. Snyder, J.P., 1984, Map Projections used by the U.S. Geological Survey (2nd ed.): U.S. Geological Survey.

Figure 1



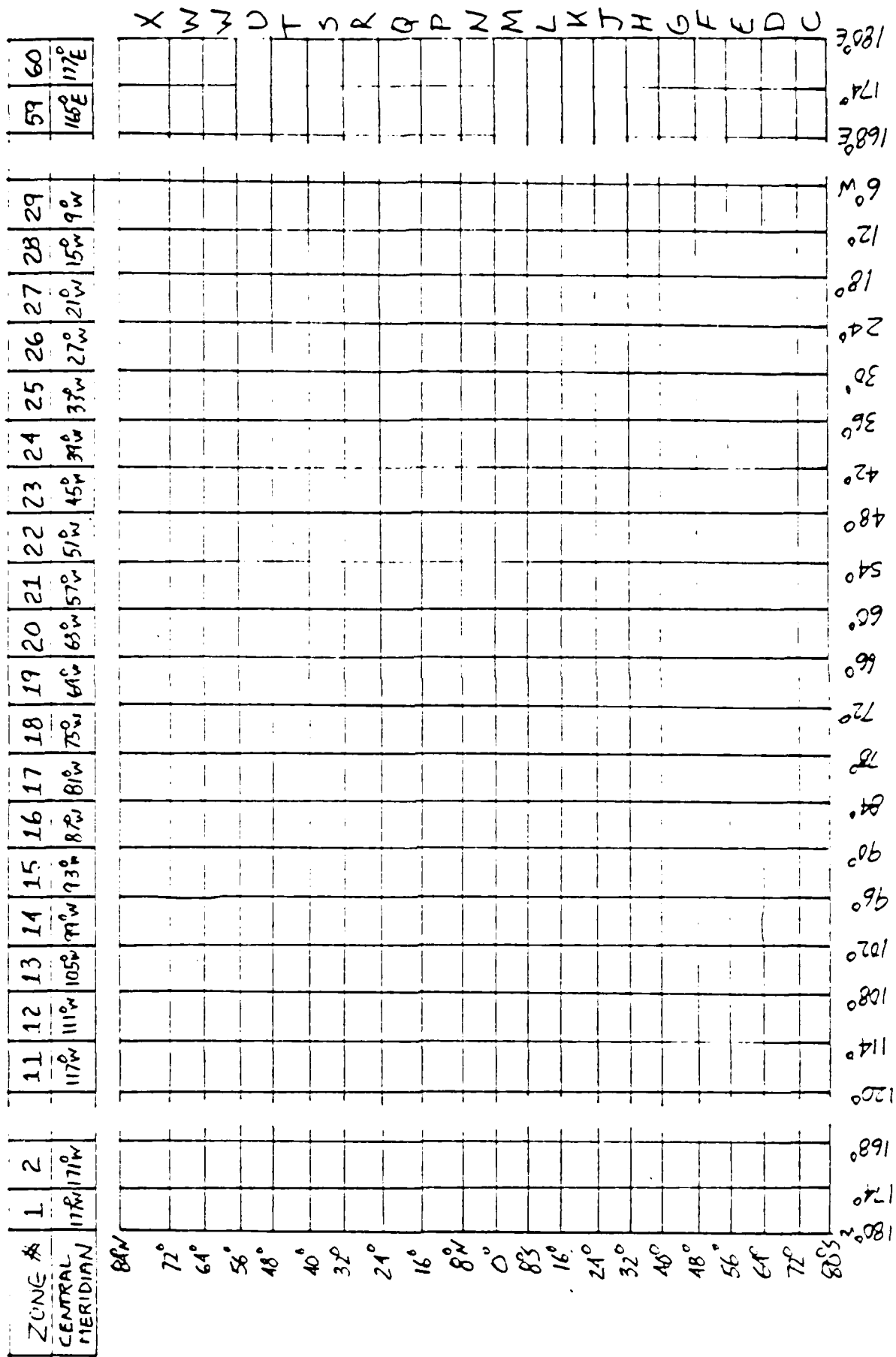
Regular Cylindrical



Transverse Cylindrical

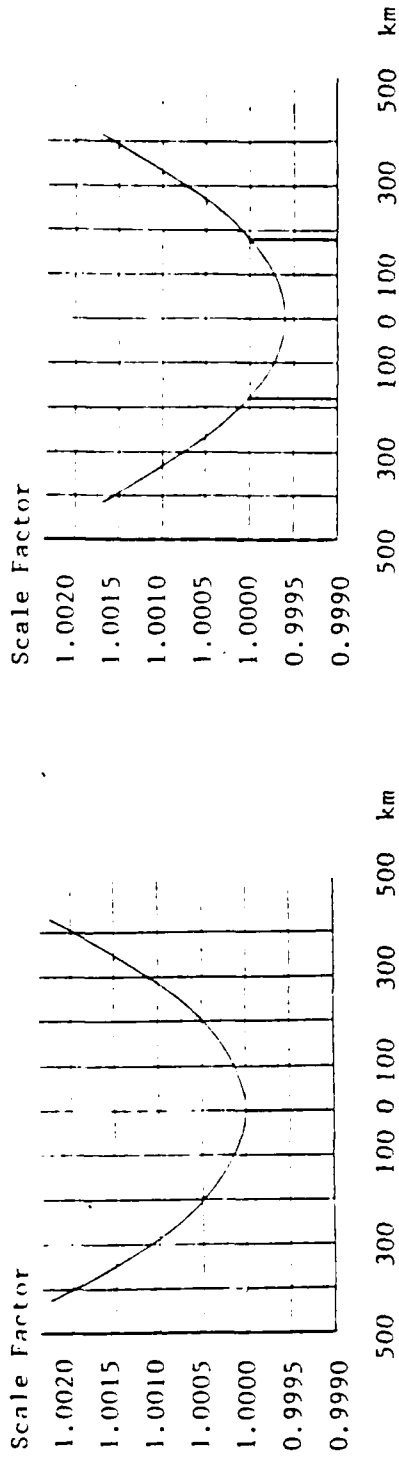
The cylindrical developable surface as seen in its regular and transverse forms.

Figure 2



The UTM numbering system and corresponding central meridians.

Figure 3

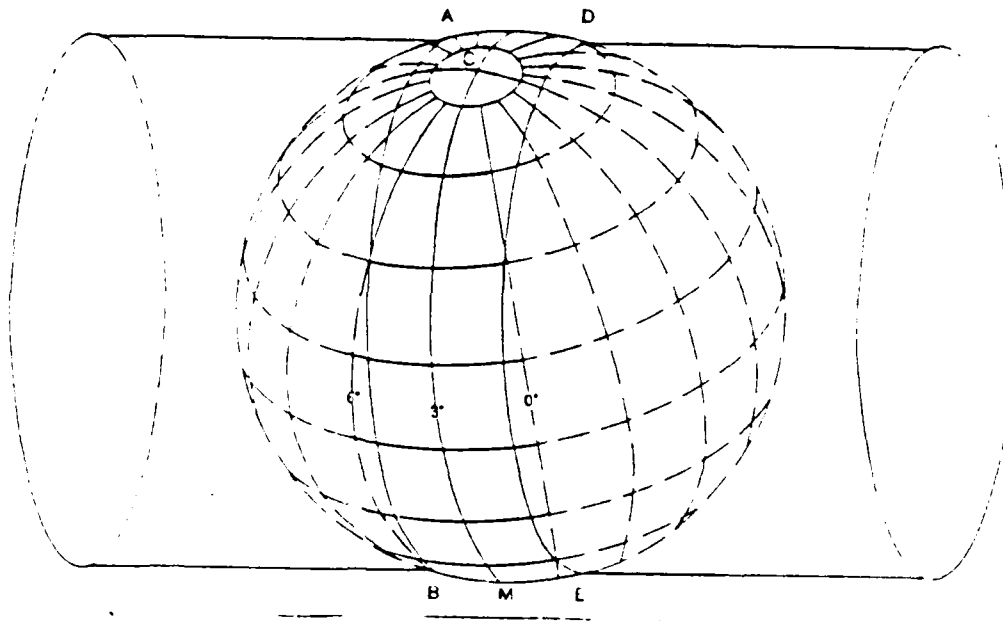


Graph of scale factor deterioration as a function of distance when the central meridian is a standard line in the Transverse Mercator projection.

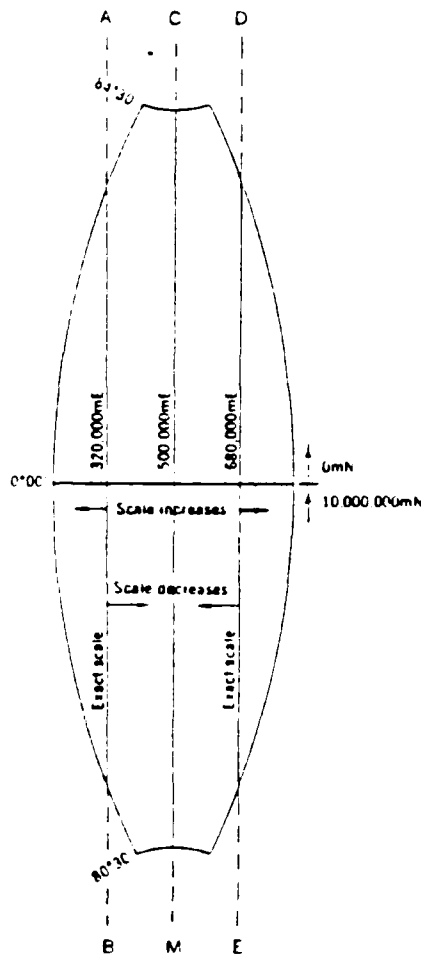
Graph of scale factor deterioration as a function of distance when two standard lines are spaced 180 km East and West of the central meridian in the UTM system.

Graphs are based on Figures 7.9 and 7.10, pages 139 and 140 of reference three.

Figure 4



CM = The Central Meridian.
 AB, DE = The Standard Lines formed by the intersections
 of the cylinder and the spheroid.



END

3-87

DTIC