

AD-A178 951

WORLDWIDE MANPOWER DISTRIBUTION BY GEOGRAPHICAL AREA
FIRST QUARTER FY 87(U) WASHINGTON HEADQUARTERS SERVICES
(DOD) DC DIRECTORATE FOR INF... 31 DEC 86
DIOR/MOS-87/01

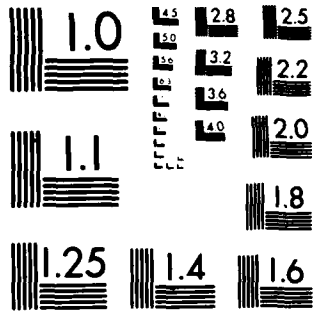
1/1

UNCLASSIFIED

F/G 5/9

NL





MICROCOPY RESOLUTION TEST CHART
NATIONAL BUREAU OF STANDARDS 1963-A



OSD

WASHINGTON HEADQUARTERS SERVICES

(2)

M05

Department of Defense WORLDWIDE MANPOWER DISTRIBUTION BY GEOGRAPHICAL AREA

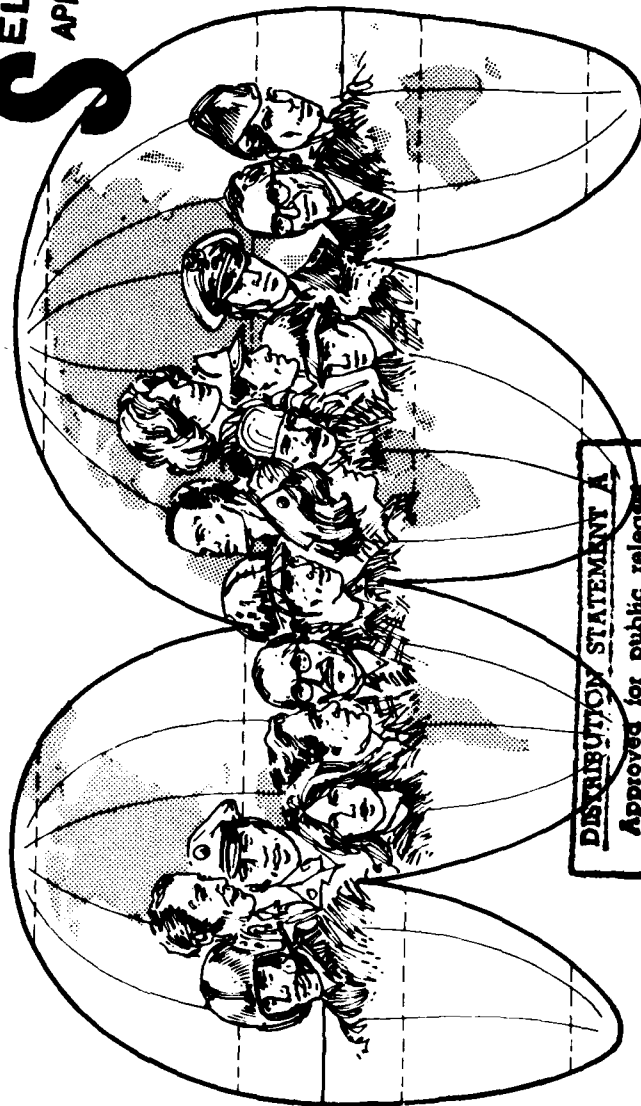
First Quarter FY 87

QUARTER ENDING DECEMBER 31, 1986

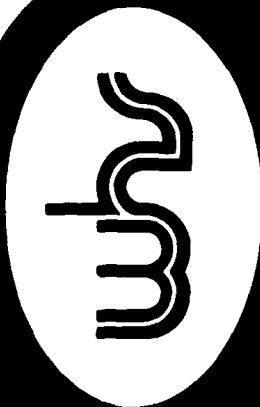
AD-A178 951



DTIC
ELECTE
APR 15 1987
S D



DISTRIBUTION STATEMENT A
Approved for public release
Distribution Unlimited



DIRECTORATE FOR INFORMATION
OPERATIONS AND REPORTS (DIOR)

Department of Defense
Worldwide Manpower Distribution
by Geographical Area
December 31, 1986

Department of Defense
Washington Headquarters Services
Directorate for Information
Operations and Reports



~~FOR SALE BY THE SUPERINTENDENT OF DOCUMENTS
U.S. GOVERNMENT PRINTING OFFICE
WASHINGTON, D.C. 20402~~

DTIC and NTIS identification number for this publication is DIOR/M05-87/01.

Accession For	
NTIS CRA&I	<input checked="" type="checkbox"/>
DTIC TAB	<input type="checkbox"/>
Unannounced	<input type="checkbox"/>
Justification	
By	
Distribution/	
Availability Codes	
Dist	A-1
Avail and/or Special	

FOREWORD

Worldwide Manpower Distribution by Geographical Area is published quarterly and contains summary data on the worldwide distribution of Department of Defense (DoD) active duty military and civilian personnel and their dependents, by country and DoD component. Data concerning the dependents of active duty military and civilian personnel are updated semiannually, in March and September.

TABLE OF CONTENTS

<u>SECTION</u>		<u>PAGE</u>
1	Active Duty Military Strengths by Regional Area and by Country	3
2	Total Civilian Personnel Strengths by Regional Area and by Country - Military Functions	11
3	*Table P14 - Summary of Dependents of Military and Civilian Personnel	27
	*Table P309C - Dependent Strengths by Regional Area and by Country	29
	Glossary	41

*Prepared semiannually, this table is updated in March and September.

SECTION 1

**DEPARTMENT OF DEFENSE
ACTIVE DUTY MILITARY PERSONNEL STRENGTHS
BY REGIONAL AREA AND BY COUNTRY**

TABLE P309A

DEPARTMENT OF DEFENSE
ACTIVE DUTY MILITARY PERSONNEL STRENGTHS BY REGIONAL AREA AND BY COUNTRY

REGIONAL AREA/COUNTRY U. S. TERRITORY AND SPECIAL LOCATIONS	DECEMBER 31, 1986				
	TOTAL	ARMY	NAVY	MARINE CORPS	AIR FORCE
CONTINENTAL UNITED STATES (CONUS)	1,328,956	467,453	275,899	145,932	439,672
ALASKA	21,569	8,267	2,003	171	11,128
HAWAII	47,256	19,002	13,172	9,013	6,069
FEDERATED STATES OF MICRONESIA	55	29	13	0	13
GUAM	8,850	26	4,410	387	4,027
JOHNSTON ATOLL					
MARSHALL ISLANDS	145	138	0	0	7
MIDWAY ISLANDS	35	35	0	0	0
PALAU	10	0	10	0	0
PUERTO RICO	13	0	13	0	0
VIRGIN ISLANDS OF THE U. S.	3,596	448	2,953	155	40
WAKE ISLAND	10	9	0	0	1
TRANSIENTS	8	0	0	0	8
AFLOAT	79,923	30,933	19,414	9,689	19,887
TOTAL - U. S. TERR. AND SPECIAL LOCATIONS	1,677,787	526,340	504,295	166,300	480,852
FOREIGN COUNTRIES (1) WESTERN & SOUTHERN EUROPE					
AUSTRIA	35	6	0	27	2
BELGIUM*	3,325	1,294	129	34	1,868
CYPRUS	13	3	0	10	0
DENMARK*	70	16	20	10	24
FINLAND	19	4	2	11	2
FRANCE*	81	18	8	40	15
GERMANY (FED REPUBLIC & WEST BERLIN)*	246,852	206,290	334	97	40,131
GIBRALTAR	1	0	1	0	0
GREECE*	3,488	559	534	18	2,377
GREENLAND*	3,324	0	0	0	324
ICELAND*	3,091	3	1,694	82	1,312
IRELAND	10	2	0	8	0
ITALY*	15,082	4,241	4,806	274	5,761
LUXEMBOURG*	12	6	0	6	0
MALTA	5	0	0	5	0
NETHERLANDS*	3,072	1,027	19	9	2,017
NORWAY*	223	36	38	23	126
PORTUGAL*	1,630	67	357	13	1,193
SPAIN*	9,136	22	3,800	213	5,101
SWEDEN	17	1	2	8	6

TABLE P309A

DEPARTMENT OF DEFENSE
ACTIVE DUTY MILITARY PERSONNEL STRENGTHS BY REGIONAL AREA AND BY COUNTRY

DECEMBER 31, 1986

REGIONAL AREA/COUNTRY	TOTAL	ARMY	NAVY	MARINE CORPS	AIR FORCE
SWITZERLAND	34	3	0	28	3
TURKEY*	4,923	1,128	111	21	3,663
UNITED KINGDOM*	29,458	233	2,329	414	26,482
VATICAN CITY	6	0	0	6	0
AFLCANT	23,892	0	21,585	2,307	0
TOTAL-WESTERN & SOUTHERN EUROPE	344,799	214,959	35,769	3,664	90,407
(*EUROPEAN NATO)	(320,767)	(214,940)	(14,179)	(1,254)	(90,394)
(*EUROPEAN NATO PERMANENTLY ASSIGNED)	(321,819)	(214,903)	(14,119)	(1,254)	(91,543)
(2) EAST ASIA AND PACIFIC					
AUSTRALIA	726	10	429	9	278
BURMA	12	3	0	7	2
CHINA	31	13	2	13	3
FIJI	2	0	2	0	0
HONG KONG	33	5	12	11	5
INDONESIA	46	10	11	14	11
JAPAN (INCLUDING OKINAWA)	49,218	2,133	7,930	22,589	16,566
MALAYSIA	18	7	1	7	3
NEW ZEALAND	62	1	45	8	8
PHILIPPINES	15,632	63	5,188	1,062	9,319
REPUBLIC OF KOREA	43,004	30,813	392	512	11,287
SINGAPORE	30	4	13	10	3
THAILAND	120	64	11	15	30
AFLCANT	21,566	0	19,720	1,846	0
TOTAL-EAST ASIA & PACIFIC	130,500	33,126	33,756	26,103	37,515
(3) AFRICA, NEAR EAST AND SOUTH ASIA					
AFGHANISTAN	6	0	0	6	0
ALGERIA	10	3	0	6	1
BAHRAIN	119	3	104	5	7
BANGLADESH	9	3	0	6	0
BOTSWANA	1	1	0	0	0
BRITISH INDIAN OCEAN TERRITORY (INCLUDES DIEGO GARCIA)	1,232	3	1,222	0	7
BURKINA FASO	6	0	0	6	0
BURUNDI	2	0	0	2	0
CAMEROON	10	2	0	7	1
CENTRAL AFRICAN REPUBLIC	6	0	0	6	0
CHAD	12	3	0	9	0
CONGO	8	0	2	6	0

TABLE P309A

DEPARTMENT OF DEFENSE
ACTIVE DUTY MILITARY PERSONNEL STRENGTHS BY REGIONAL AREA AND BY COUNTRY

DECEMBER 31, 1986

REGIONAL AREA/COUNTRY	TOTAL	ARMY	NAVY	MARINE CORPS	AIR FORCE
DJIBOUTI	8	1	0	7	0
EGYPT	1,365	1,243	28	27	67
ETHIOPIA	7	0	0	7	0
GABON	5	0	0	5	0
GHANA	10	3	0	7	0
GUINEA	6	0	0	6	0
INDIA	36	4	3	23	6
IRAQ	8	2	0	6	0
ISRAEL	72	25	8	20	19
IVORY COAST	13	3	1	8	1
JORDAN	28	13	0	9	6
KENYA	44	10	11	16	7
KUWAIT	28	15	2	7	4
LEBANON	21	6	0	15	0
LIBERIA	17	5	3	7	0
MADAGASCAR	7	0	2	5	0
MALAWI	3	3	0	0	0
MALI	6	0	0	6	0
MAURITANIA	6	0	0	6	0
MAURITIUS	6	0	0	6	0
MOROCCO	50	14	3	24	9
MOZAMBIQUE	2	2	0	0	0
NEPAL	8	2	0	6	0
NIGER	7	2	0	5	0
NIGERIA	17	4	0	11	2
OMAN	28	2	0	9	17
PAKISTAN	37	10	3	16	8
ST. HELENA (INCLUDES ASCENSION ISLAND)	2	0	0	0	2
SAUDI ARABIA	442	161	43	20	218
SENEGAL	13	1	1	11	0
SEYCHELLES	4	0	0	0	4
SIERRA LEONE	7	0	0	7	0
SOMALIA	31	19	3	6	3
SOUTH AFRICA	20	2	2	13	3
SRI LANKA	10	0	2	8	0
SUDAN	22	6	0	11	5
SYRIA	8	2	0	6	0
TANZANIA	9	0	0	9	0
UNITED REPUBLIC OF	6	0	0	6	0
TOGO	27	13	2	9	3
TUNISIA	5	0	0	5	0
UGANDA	27	10	2	9	5

TABLE P309A

DEPARTMENT OF DEFENSE
ACTIVE DUTY MILITARY PERSONNEL STRENGTHS BY REGIONAL AREA AND BY COUNTRY

REGIONAL AREA/COUNTRY	DECEMBER 31, 1986				
	TOTAL	ARMY	NAVY	MARINE CORPS	AIR FORCE
UNITED ARAB EMIRATES	16	5	1	8	2
YEMEN (SANAA)	17	8	0	6	3
ZAIRE	28	11	0	9	6
ZAMBIA	5	0	0	5	0
ZIMBABWE	8	2	0	6	0
AFLOAT	3,688	0	3,557	131	0
TOTAL-AFRICA, NEAR EAST & SOUTH ASIA	7,632	1,617	5,003	599	413
(4) WESTERN HEMISPHERE					
ANTIGUA	72	0	70	0	2
ARGENTINA	27	5	4	12	6
BAHAMAS	36	6	21	7	2
THE BAHAMAS	24	14	4	6	0
BARBADOS	125	124	1	0	0
BELIZE					
BERMUDA	1,471	0	1,389	82	0
BOLIVIA	16	4	1	8	3
BRAZIL	54	10	40	28	6
CANADA	541	9	401	11	120
CHILE	24	4	4	14	2
COLOMBIA	26	5	4	14	3
COSTA RICA	17	7	0	10	0
CUBA (GUANTANAMO)	2,244	0	1,838	404	2
DOMINICAN REPUBLIC	17	4	2	8	3
ECUADOR	23	5	2	9	7
EL SALVADOR	75	38	4	28	5
GRENADE	7	1	0	6	0
GUATEMALA	21	7	0	13	1
GUYANA	6	0	0	6	0
HAITI	13	4	0	8	1
HONDURAS <u>2/</u>	1,086	1,054	3	16	13
JAMAICA	15	0	3	12	0
MEXICO	31	9	3	12	7
NICARAGUA	14	3	0	10	1
PANAMA	10,046	6,768	482	205	2,591
PARAGUAY	12	3	1	7	1
PERU	36	5	12	12	7
SURINAME	3	3	0	0	0
TRINIDAD AND TOBAGO	6	0	0	6	0
URUGUAY	16	4	2	8	2
VENEZUELA	38	5	4	8	21

2/ Number includes military personnel on TDY for planning and conduct of exercises.

TABLE P309A

DEPARTMENT OF DEFENSE
ACTIVE DUTY MILITARY PERSONNEL STRENGTHS BY REGIONAL AREA AND BY COUNTRY

REGIONAL AREA/COUNTRY	DECEMBER 31, 1986				
	TOTAL	ARMY	NAVY	MARINE CORPS	AIR FORCE
AFLOAT					
TOTAL-WESTERN HEMISPHERE	504	0	0	504	0
(5) ANTARCTICA	16,646	8,101	4,265	1,474	2,806
(6) EASTERN EUROPE	115	0	115	0	0
BULGARIA	10	2	0	6	2
CZECHOSLOVAKIA	13	1	0	9	3
GERMAN DEMOCRATIC REPUBLIC	57	47	0	10	0
HUNGARY	14	4	0	9	1
POLAND	15	3	0	11	1
ROMANIA	13	3	0	9	1
UNION OF SOVIET SOCIALIST REPUBLICS	53	6	4	35	8
YUGOSLAVIA	27	6	1	16	4
TOTAL-EASTERN EUROPE	202	72	5	105	20
(7) UNDISTRIBUTED					
ASHORE					
TOTAL-UNDISTRIBUTED	164	9	155	0	0
TOTAL FOREIGN COUNTRIES					
ASHORE	500,058	257,884	79,068	31,945	131,161
AFLOAT	450,408	257,884	34,206	27,157	131,161
	49,650	0	44,862	4,788	0
TOTAL WORLDWIDE	2,177,845	784,224	583,363	198,245	612,013
ASHORE	1,940,834	784,224	352,093	192,504	612,013
AFLOAT	237,011	0	231,270	5,741	0

NOTE: ASHORE INCLUDES TEMPORARILY SHORE-BASED.

SECTION 2

**DEPARTMENT OF DEFENSE
TOTAL CIVILIAN PERSONNEL STRENGTHS
BY REGIONAL AREA AND BY COUNTRY
MILITARY FUNCTIONS**

TABLE P309B

DEPARTMENT OF DEFENSE
TOTAL CIVILIAN PERSONNEL STRENGTHS BY REGIONAL AREA AND BY COUNTRY
MILITARY FUNCTIONS - SUMMARY

DECEMBER 31, 1986

REGIONAL AREA/COUNTRY	TOTAL		U.S.		FOREIGN		FOREIGN	
	DIRECT HIRE	INDIRECT HIRE	CITIZENS DIRECT HIRE	CITIZENS INDIRECT HIRE	NATIONALS DIRECT HIRE	NATIONALS INDIRECT HIRE	NATIONALS DIRECT HIRE	NATIONALS INDIRECT HIRE
U. S. TERRITORY AND SPECIAL LOCATIONS								
CONTINENTAL UNITED STATES (CONUS)	904,326	155	904,171	155	0	0	0	0
ALASKA	5,011	0	5,011	0	0	0	0	0
HAWAII	20,344	0	20,344	0	0	0	0	0
AMERICAN SAMOA	1	0	1	0	0	0	0	0
FEDERATED STATES OF MICRONESIA	4	3	1	3	0	0	0	0
GUAM	4,641	37	4,608	33	0	0	4	4
JOHNSTON ATOLL	25	0	25	0	0	0	0	0
MARSHALL ISLANDS	70	0	70	0	0	0	0	0
PUERTO RICO	3,069	17	3,052	17	0	0	0	0
VIRGIN ISLANDS OF THE U.S.	102	0	102	0	0	0	0	0
TOTAL-U.S. TERR. AND SPECIAL LOCATIONS	937,593	212	937,385	208	0	0	4	4
(1) WESTERN & SOUTHERN EUROPE								
AUSTRIA	3	1	2	1	0	0	0	0
BELGIUM*	530	1,059	524	6	0	0	1,053	0
DENMARK*	14	12	2	12	0	0	0	0
FRANCE*	19	5	14	5	0	0	0	0
GERMANY (FED. REPUBLIC & WEST BERLIN)*	31,717	59,074	31,705	12	0	0	59,062	0
GREECE*	325	528	295	30	0	0	498	0
GREENLAND*	16	0	16	0	0	0	0	0
ICELAND*	985	842	143	842	0	0	0	0
ITALY*	4,870	3,150	1,741	3,128	0	0	21	0
LUXEMBOURG*	17	0	17	0	0	0	0	0
NETHERLANDS*	356	446	345	11	0	0	435	0
NORWAY*	69	44	25	44	0	0	0	0
PORTUGAL*	1,232	1,043	189	1,043	0	0	0	0
SPAIN*	926	1,929	921	5	0	0	1,924	0
SWITZERLAND	1	0	1	0	0	0	0	0
TURKEY*	774	367	407	367	0	0	0	0
UNITED KINGDOM*	3,595	982	2,704	891	0	0	91	0
TOTAL-WESTERN & SOUTHERN EUROPE	45,449	69,482	39,051	6,398	0	0	63,084	0
*NATO COUNTRIES								
(2) EAST ASIA AND PACIFIC								

TABLE P309B
 DEPARTMENT OF DEFENSE
 TOTAL CIVILIAN PERSONNEL STRENGTHS BY REGIONAL AREA AND BY COUNTRY
 MILITARY FUNCTIONS - SUMMARY

REGIONAL AREA/COUNTRY	DECEMBER 31, 1986					
	TOTAL DIRECT HIRE	TOTAL FOREIGN NATIONALS	U.S. CITIZENS DIRECT HIRE	FOREIGN NATIONALS DIRECT HIRE	FOREIGN NATIONALS INDIRECT HIRE	FOREIGN NATIONALS
AUSTRALIA	265	230	35	230	0	0
FRENCH POLYNESIA	1	1	0	1	0	0
HONG KONG	10	10	0	10	0	0
INDONESIA	27	19	8	19	0	0
JAPAN (INCLUDING OKINAWA)	4,174	17,321	4,155	19	17,302	0
MALAYSIA	1	0	1	0	0	0
NEW ZEALAND	20	14	6	14	0	0
PAPUA NEW GUINEA	1	1	0	1	0	0
PHILIPPINES	16,913	15,408	1,512	15,401	7	0
REPUBLIC OF KOREA	15,531	16,517	2,264	13,267	3,250	0
SINGAPORE	33	23	10	23	0	0
THAILAND	27	18	9	18	0	0
TOTAL-EAST ASIA & PACIFIC	37,003	49,562	8,000	29,003	20,559	0
(3) AFRICA, NEAR EAST AND SOUTH ASIA						
BAHRAIN	81	32	49	32	0	0
BRITISH INDIAN OCEAN TERRITORY (INCLUDES DIEGO GARCIA)	51	40	11	40	0	0
EGYPT	245	220	25	220	0	0
GHANA	1	0	1	0	0	0
INDIA	5	0	0	0	0	0
ISRAEL	16	0	16	0	0	0
JORDAN	3	1	2	1	0	0
KENYA	10	5	5	5	0	0
KUWAIT	9	0	9	0	0	0
LEBANON	2	0	0	0	0	0
LIBERIA	2	2	0	2	0	0
MOROCCO	12	4	8	4	0	0
NIGERIA	3	1	2	1	0	0
OMAN	4	2	2	2	0	0
PAKISTAN	20	18	2	18	0	0
SAUDI ARABIA	453	95	358	95	0	0
SOMALIA	9	2	7	2	0	0
SUDAN	7	3	4	3	0	0
TUNISIA	5	3	2	3	0	0
UNITED ARAB EMIRATES	8	5	3	5	0	0

TABLE P3098

DEPARTMENT OF DEFENSE
TOTAL CIVILIAN PERSONNEL STRENGTHS BY REGIONAL AREA AND BY COUNTRY
MILITARY FUNCTIONS - SUMMARY

REGIONAL AREA/COUNTRY	DECEMBER 31, 1986					
	TOTAL DIRECT HIRE	TOTAL FOREIGN NATIONALS	U.S. CITIZENS DIRECT HIRE	FOREIGN NATIONALS DIRECT HIRE	FOREIGN NATIONALS INDIRECT HIRE	FOREIGN NATIONALS
YEMEN (SANAA)	14	8	6	8	0	0
ZAIRE	5	3	2	3	0	0
ZAMBIA	1	1	0	1	0	0
TOTAL-AFRICA, NEAR EAST & SOUTH ASIA	966	452	514	452	0	0
(4) WESTERN HEMISPHERE						
ANTIGUA	4	0	4	0	0	0
ARGENTINA	7	6	1	6	0	0
BAHAMAS	12	0	12	0	0	0
BARBADOS	1	1	0	1	0	0
BERMUDA	404	102	302	102	0	0
BOLIVIA	5	2	3	2	0	0
BRAZIL	9	5	4	5	0	0
CANADA	196	147	49	147	0	0
CHILE	3	1	2	1	0	0
COLOMBIA	13	11	3	10	1	1
COSTA RICA	6	4	2	4	0	0
CUBA (GUANTANAMO)	963	533	430	533	0	0
DOMINICAN REPUBLIC	10	8	1	9	0	0
ECUADOR	9	6	3	6	0	0
EL SALVADOR	10	3	7	3	0	0
GUATEMALA	5	4	1	4	0	0
HONDURAS	16	9	7	9	0	0
MEXICO	4	3	1	3	0	0
NICARAGUA	3	3	0	3	0	0
PANAMA	5,855	3,819	2,036	3,819	0	0
PARAGUAY	10	7	3	7	0	0
PERU	10	5	5	5	0	0
URUGUAY	5	3	2	3	0	0
VENEZUELA	11	7	4	7	0	0
TOTAL-WESTERN HEMISPHERE	7,571	4,680	2,882	4,689	1	1
(6) EASTERN EUROPE						
UNION OF SOVIET SOCIALIST REPUBLICS	1	0	1	0	0	0
YUGOSLAVIA	1	1	0	1	0	0
TOTAL-EASTERN EUROPE	2	1	1	1	0	0

TABLE P3093

DEPARTMENT OF DEFENSE
 TOTAL CIVILIAN PERSONNEL STRENGTHS BY REGIONAL AREA AND BY COUNTRY
 MILITARY FUNCTIONS - SUMMARY

DECEMBER 31, 1986

REGIONAL AREA/COUNTRY	TOTAL DIRECT HIRE	TOTAL FOREIGN NATIONALS		U.S. CITIZENS DIRECT HIRE		FOREIGN NATIONALS DIRECT HIRE		FOREIGN NATIONALS INDIRECT HIRE	
		FOREIGN NATIONALS	NATIONALS	DIRECT HIRE	DIRECT HIRE	DIRECT HIRE	INDIRECT HIRE	INDIRECT HIRE	NATIONALS
TOTAL FOREIGN COUNTRIES	90,991	124,187		50,448		40,543		83,644	
TOTAL WORLDWIDE	1,028,584	124,399		987,833		40,751		83,648	

NOTE: EXCLUDES SPECIAL EMPLOYMENT CATEGORIES FOR STUDENTS
 AND DISADVANTAGED YOUTH.

TABLE P309B

DEPARTMENT OF DEFENSE
ARMY CIVILIAN PERSONNEL STRENGTHS BY REGIONAL AREA AND BY COUNTRY
MILITARY FUNCTIONS

DECEMBER 31, 1986

REGIONAL AREA/COUNTRY	TOTAL		U.S.		FOREIGN		FOREIGN	
	DIRECT HIRE	FOREIGN NATIONALS	DIRECT HIRE	CITIZENS	DIRECT HIRE	NATIONALS	INDIRECT HIRE	NATIONALS
U. S. TERRITORY AND SPECIAL LOCATIONS								
CONTINENTAL UNITED STATES (CONUS)	302,346	0	302,346	0	0	0	0	0
ALASKA	3,042	0	3,042	0	0	0	0	0
HAWAII	5,445	0	5,445	0	0	0	0	0
AMERICAN SAMOA	1	0	1	0	0	0	0	0
GUAM	13	0	13	0	0	0	0	0
JOHNSTON ATOLL	25	0	25	0	0	0	0	0
MARSHALL ISLANDS	70	0	70	0	0	0	0	0
PUERTO RICO	1,526	0	1,526	0	0	0	0	0
VIRGIN ISLANDS OF THE U.S.	102	0	102	0	0	0	0	0
TOTAL-U.S. TERR. AND SPECIAL LOCATIONS	312,570	0	312,570	0	0	0	0	0
(1) WESTERN & SOUTHERN EUROPE								
AUSTRIA	2	1	1	0	1	0	1	0
BELGIUM*	317	840	312	312	5	835	2	0
DENMARK*	4	2	2	2	2	0	0	0
FRANCE*	12	5	7	7	5	0	5	0
GERMANY (FED. REPUBLIC & WEST BERLIN)*	22,203	51,688	22,192	22,192	11	51,677	13	2
GREECE*	32	15	19	19	13	0	0	0
GREENLAND*	11	0	11	11	0	0	0	0
ITALY*	1,412	1,079	333	333	1,079	0	0	0
LUXEMBOURG*	15	0	15	15	0	0	0	0
NETHERLANDS*	121	346	119	119	2	344	2	0
NORWAY*	5	2	3	3	2	0	0	0
PORTUGAL*	12	8	4	4	8	0	0	0
SPAIN*	11	5	6	6	5	0	0	0
TURKEY*	68	29	39	39	29	0	0	0
UNITED KINGDOM*	611	575	36	36	575	0	0	0
TOTAL-WESTERN & SOUTHERN EUROPE	24,836	54,595	23,099	23,099	1,737	52,858	1,737	52,858
*NATO COUNTRIES								
(2) EAST ASIA AND PACIFIC								
JAPAN (INCLUDING OKINAWA)	1,018	3,405	1,017	1,017	1	3,404	1	0
PHILIPPINES	1	0	1	1	0	0	0	0
REPUBLIC OF KOREA	12,803	14,293	1,760	1,760	11,043	3,250	11,043	3,250
TOTAL-EAST ASIA & PACIFIC	13,822	17,698	2,778	2,778	11,044	6,654	11,044	6,654

TABLE P309B
 DEPARTMENT OF DEFENSE
 ARMY CIVILIAN PERSONNEL STRENGTHS BY REGIONAL AREA AND BY COUNTRY
 MILITARY FUNCTIONS

REGIONAL AREA/COUNTRY	DECEMBER 31, 1986					
	TOTAL DIRECT HIRE	TOTAL FOREIGN NATIONALS	U.S. CITIZENS DIRECT HIRE	FOREIGN NATIONALS DIRECT HIRE	FOREIGN NATIONALS INDIRECT HIRE	FOREIGN NATIONALS INDIRECT HIRE
(3) AFRICA, NEAR EAST AND SOUTH ASIA						
EGYPT	10	5		5		0
GHANA	1	0		1		0
JORDAN	1	1	0	1	1	0
KENYA	4	3	1	3	3	0
KUWAIT	3	0	3	0	0	0
LEBANON	2	2	0	2	2	0
LIBERIA	2	2	0	2	2	0
MOROCCO	10	4	6	4	4	0
NIGERIA	3	1	2	1	1	0
OMAN	3	1	2	2	1	0
SAUDI ARABIA	337	85	252	85	85	0
SOMALIA	1	1	0	1	1	0
SUDAN	3	1	2	1	1	0
TUNISIA	5	3	2	3	3	0
UNITED ARAB EMIRATES	4	2	2	2	2	0
YEMEN (SANA'A)	4	4	0	4	4	0
ZAIRE	4	3	1	3	3	0
TOTAL-AFRICA, NEAR EAST & SOUTH ASIA	397	118	279	118	118	0
(4) WESTERN HEMISPHERE						
ARGENTINA	7	6		6	6	0
BOLIVIA	1	0		1	0	0
BRAZIL	6	3	3	3	3	0
CANADA	13	2	11	2	2	0
COLOMBIA	9	8	1	8	8	0
COSTA RICA	4	3	1	3	3	0
DOMINICAN REPUBLIC	3	3	0	3	3	0
ECUADOR	5	4	1	4	4	0
EL SALVADOR	9	3	6	3	3	0
GUATEMALA	2	2	0	2	2	0
HONDURAS	13	8	5	8	8	0
NICARAGUA	2	2	0	2	2	0
PANAMA	4,205	3,007	1,198	3,007	3,007	0
PARAGUAY	4	4	0	4	4	0

TABLE P309B

DEPARTMENT OF DEFENSE
ARMY CIVILIAN PERSONNEL STRENGTHS BY REGIONAL AREA AND BY COUNTRY
MILITARY FUNCTIONS

REGIONAL AREA/COUNTRY	DECEMBER 31, 1986					
	TOTAL DIRECT HIRE	TOTAL FOREIGN NATIONALS	U.S. CITIZENS DIRECT HIRE	FOREIGN NATIONALS DIRECT HIRE	FOREIGN NATIONALS INDIRECT HIRE	FOREIGN NATIONALS INDIRECT HIRE
PERU	6	4				0
URUGUAY	5	3				0
VENEZUELA	7	5				0
TOTAL-WESTERN HEMISPHERE	4,301	3,067	1,234		3,067	0
(6) EASTERN EUROPE						
UNION OF SOVIET SOCIALIST REPUBLICS						
YUGOSLAVIA	1	0	1			0
TOTAL-EASTERN EUROPE	2	1	1			0
TOTAL FOREIGN COUNTRIES	43,358	75,479	27,391		15,967	59,512
TOTAL WORLDWIDE	355,928	75,479	339,961		15,967	59,512

NOTE: EXCLUDES SPECIAL EMPLOYMENT CATEGORIES FOR STUDENTS AND DISADVANTAGED YOUTH.

TABLE P3098

DEPARTMENT OF DEFENSE
NAVY CIVILIAN PERSONNEL STRENGTHS BY REGIONAL AREA AND BY COUNTRY
MILITARY FUNCTIONS

DECEMBER 31, 1986

REGIONAL AREA/COUNTRY	TOTAL		U.S.		FOREIGN		FOREIGN	
	DIRECT HIRE	FOREIGN NATIONALS	CITIZENS DIRECT HIRE	NATIONALS DIRECT HIRE	NATIONALS DIRECT HIRE	NATIONALS INDIRECT HIRE	INDIRECT HIRE	INDIRECT HIRE
U.S. TERRITORY AND SPECIAL LOCATIONS								
CONTINENTAL UNITED STATES (CONUS)	292,171	91	292,080	91	0	0	0	0
ALASKA	167	0	167	0	0	0	0	0
HAWAII	12,664	0	12,664	0	0	0	0	0
FEDERATED STATES OF MICRONESIA	4	3	1	3	0	0	0	0
GUAM	3,923	37	3,890	33	0	0	4	4
PUERTO RICO	1,477	0	1,477	0	0	0	0	0
TOTAL-U.S. TERR. AND SPECIAL LOCATIONS	310,406	131	310,279	127	0	0	4	4
(1) WESTERN & SOUTHERN EUROPE								
FRANCE*	1	0	1	0	0	0	0	0
GERMANY (FED. REPUBLIC & WEST BERLIN)*	8	0	8	0	0	0	0	0
GREECE*	29	105	29	105	0	0	105	105
ICELAND*	846	758	88	758	0	0	0	0
ITALY*	1,669	1,061	629	1,040	0	0	21	21
PORTUGAL*	57	47	10	47	0	0	0	0
SPAIN*	248	966	248	966	0	0	966	966
UNITED KINGDOM*	515	283	232	283	0	0	0	0
TOTAL-WESTERN & SOUTHERN EUROPE	3,373	3,220	1,245	2,128	0	0	1,092	1,092
*NATO COUNTRIES								
(2) EAST ASIA AND PACIFIC								
AUSTRALIA	258	226	32	226	0	0	0	0
FRENCH POLYNESIA	1	1	0	1	0	0	0	0
HONG KONG	10	10	0	10	0	0	0	0
INDONESIA	23	19	4	19	0	0	0	0
JAPAN (INCLUDING OKINAWA)	1,084	9,203	1,066	18	0	0	9,185	9,185
MALAYSIA	1	0	1	0	0	0	0	0
NEW ZEALAND	20	14	6	14	0	0	0	0
PAPUA NEW GUINEA	1	1	0	1	0	0	0	0
PHILIPPINES	12,731	12,210	527	12,204	0	0	6	6
REPUBLIC OF KOREA	179	137	42	137	0	0	0	0
SINGAPORE	32	23	9	23	0	0	0	0
THAILAND	22	15	7	15	0	0	0	0
TOTAL-EAST ASIA & PACIFIC	14,362	21,859	1,694	12,668	0	0	9,191	9,191

TABLE P309B

DEPARTMENT OF DEFENSE
NAVY CIVILIAN PERSONNEL STRENGTHS BY REGIONAL AREA AND BY COUNTRY
MILITARY FUNCTIONS

REGIONAL AREA/COUNTRY	DECEMBER 31, 1986					
	TOTAL DIRECT HIRE	TOTAL FOREIGN NATIONALS	U S CITIZENS DIRECT HIRE	FOREIGN NATIONALS DIRECT HIRE	FOREIGN NATIONALS INDIRECT HIRE	FOREIGN NATIONALS INDIRECT HIRE
(3) AFRICA, NEAR EAST AND SOUTH ASIA						
BAHRAIN	28	20	8	20	0	0
BRITISH INDIAN OCEAN TERRITORY (INCLUDES DIEGO GARCIA)	50	40	10	40	0	0
EGYPT	199	199	0	199	0	0
INDIA	5	5	0	5	0	0
KUWAIT	4	0	4	0	0	0
MOROCCO	2	0	2	0	0	0
PAKISTAN	7	7	0	7	0	0
SAUDI ARABIA	8	1	7	1	0	0
SOMALIA	1	0	1	0	0	0
TOTAL-AFRICA, NEAR EAST & SOUTH ASIA	304	272	32	272	0	0
(4) WESTERN HEMISPHERE						
BAHAMAS, THE	12	0	12	0	0	0
BARBADOS	1	1	0	1	0	0
BERMUDA	367	101	266	101	0	0
CANADA	140	117	23	117	0	0
CUBA (GUANTANAMO)	904	532	372	532	0	0
DOMINICAN REPUBLIC	3	3	0	3	0	0
NICARAGUA	1	1	0	1	0	0
PANAMA	385	285	100	285	0	0
PERU	1	0	1	0	0	0
TOTAL-WESTERN HEMISPHERE	1,814	1,040	774	1,040	0	0
TOTAL FOREIGN COUNTRIES	19,853	26,391	3,745	16,108	10,283	10,283
TOTAL WORLDWIDE	330,259	26,522	314,024	16,235	10,287	10,287

NOTE: EXCLUDES SPECIAL EMPLOYMENT CATEGORIES FOR STUDENTS
AND DISADVANTAGED YOUTH

TABLE P309B
 DEPARTMENT OF DEFENSE
 AIR FORCE CIVILIAN PERSONNEL STRENGTHS BY REGIONAL AREA AND BY COUNTRY
 MILITARY FUNCTIONS

		DECEMBER 31, 1986					
REGIONAL AREA/COUNTRY	TOTAL DIRECT HIRE	TOTAL FOREIGN NATIONALS	U.S. CITIZENS DIRECT HIRE	FOREIGN NATIONALS DIRECT HIRE	FOREIGN NATIONALS INDIRECT HIRE	FOREIGN NATIONALS INDIRECT HIRE	
U. S. TERRITORY AND SPECIAL LOCATIONS							
CONTINENTAL UNITED STATES (CONUS)	234,101	0	234,101	0	0	0	
ALASKA	1,749	0	1,749	0	0	0	
HAWAII	1,991	0	1,991	0	0	0	
GUAM	688	0	688	0	0	0	
PUERTO RICO	1	0	1	0	0	0	
TOTAL-U.S. TERR. AND SPECIAL LOCATIONS	238,530	0	238,530	0	0	0	
(1) WESTERN & SOUTHERN EUROPE							
BELGIUM*	54	196	54	0	196	0	
DENMARK*	5	5	0	5	0	0	
FRANCE*	5	0	5	0	0	0	
GERMANY (FED. REPUBLIC & WEST BERLIN)*	2,806	6,202	2,806	0	6,202	0	
GREECE*	198	393	181	17	376	0	
GREENLAND*	4	0	4	0	0	0	
ICELAND*	102	78	24	78	0	0	
ITALY*	1,186	912	274	912	0	0	
NETHERLANDS*	102	82	102	0	82	0	
NORWAY*	38	38	0	38	0	0	
PORTUGAL*	1,084	981	103	981	0	0	
SPAIN*	386	864	386	0	864	0	
TURKEY*	532	312	220	312	0	0	
UNITED KINGDOM*	1,579	24	1,555	24	0	0	
TOTAL-WESTERN & SOUTHERN EUROPE	8,081	10,087	5,714	2,367	7,720	0	
*NATO COUNTRIES							
(2) EAST ASIA AND PACIFIC							
AUSTRALIA	3	1	2	1	0	0	
INDONESIA	2	0	2	0	0	0	
JAPAN (INCLUDING OKINAWA)	852	4,544	852	0	4,544	0	
PHILIPPINES	3,504	3,102	402	3,102	0	0	
REPUBLIC OF KOREA	2,233	2,024	209	2,024	0	0	
THAILAND	1	0	1	0	0	0	
TOTAL-EAST ASIA & PACIFIC	6,595	9,671	1,468	5,127	4,544	0	

TABLE P309B

DEPARTMENT OF DEFENSE
AIR FORCE CIVILIAN PERSONNEL STRENGTHS BY REGIONAL AREA AND BY COUNTRY
MILITARY FUNCTIONS

DECEMBER 31, 1986

REGIONAL AREA/COUNTRY	TOTAL DIRECT HIRE	TOTAL FOREIGN NATIONALS		U.S. CITIZENS		FOREIGN NATIONALS		FOREIGN NATIONALS	
		FOREIGN NATIONALS	INDIRECT HIRE	DIRECT HIRE	INDIRECT HIRE	DIRECT HIRE	INDIRECT HIRE	DIRECT HIRE	INDIRECT HIRE
(3) AFRICA, NEAR EAST AND SOUTH ASIA									
BAHRAIN	1	0	0	1	0	0	0	0	0
EGYPT	36	16	0	20	16	0	0	0	0
ISRAEL	16	0	0	16	0	0	0	0	0
JORDAN	2	0	0	2	0	0	0	0	0
KENYA	5	2	0	3	2	2	0	0	0
KUWAIT	2	0	0	2	0	0	0	0	0
OMAN	1	1	0	0	1	0	0	0	0
PAKISTAN	13	11	0	2	11	0	0	0	0
SAUDI ARABIA	101	9	0	92	9	0	0	0	0
SOMALIA	7	1	0	6	1	0	0	0	0
SUDAN	4	2	0	2	2	0	0	0	0
UNITED ARAB EMIRATES	4	3	0	1	3	0	0	0	0
YEMEN (SANA'A)	10	4	0	6	4	0	0	0	0
ZA'IRE	1	0	0	1	0	0	0	0	0
TOTAL-AFRICA, NEAR EAST & SOUTH ASIA	203	49	0	154	49	0	0	0	0
(4) WESTERN HEMISPHERE									
CANADA	4	0	0	4	0	0	0	0	0
COLOMBIA	1	0	0	1	0	0	0	0	0
HONDURAS	1	0	0	1	0	0	0	0	0
PANAMA	657	492	0	165	492	0	0	0	0
TOTAL-WESTERN HEMISPHERE	663	492	0	171	492	0	0	0	0
TOTAL FOREIGN COUNTRIES	15,542	20,299	7,507	8,035	12,264	8,035	12,264	8,035	12,264
TOTAL WORLDWIDE	254,072	20,299	246,037	8,035	12,264	8,035	12,264	8,035	12,264

NOTE: EXCLUDES SPECIAL EMPLOYMENT CATEGORIES FOR STUDENTS AND DISADVANTAGED YOUTH.

TABLE P309B

DEPARTMENT OF DEFENSE
OTHER DOD ORGANIZATIONS
CIVILIAN PERSONNEL STRENGTHS BY REGIONAL AREA AND BY COUNTRY
MILITARY FUNCTIONS

REGIONAL AREA/COUNTRY	DECEMBER 31, 1986					
	TOTAL DIRECT HIRE	TOTAL FOREIGN NATIONALS	U S CITIZENS DIRECT HIRE	FOREIGN NATIONALS DIRECT HIRE	FOREIGN NATIONALS INDIRECT HIRE	FOREIGN NATIONALS INDIRECT HIRE
U. S. TERRITORY AND SPECIAL LOCATIONS						
CONTINENTAL UNITED STATES (CONUS)	75,708	64	75,644	64	0	0
ALASKA	53	0	53	0	0	0
HAWAII	244	0	244	0	0	0
GUAM	17	0	17	0	0	0
PUERTO RICO	65	17	48	17	0	0
TOTAL-U.S. TERR. AND SPECIAL LOCATIONS	76,087	81	76,006	81	0	0
(1) WESTERN & SOUTHERN EUROPE						
AUSTRIA	1	0	1	0	0	0
BELGIUM*	159	23	158	1	22	0
DENMARK*	5	5	0	5	0	0
FRANCE*	1	0	1	0	0	0
GERMANY (FED. REPUBLIC & WEST BERLIN)*	6,700	1,184	6,699	1	1,183	0
GREECE*	66	15	66	0	15	0
GREENLAND*	1	0	1	0	0	0
ICELAND*	37	6	31	6	0	0
ITALY*	603	98	505	98	0	0
LUXEMBOURG*	2	0	2	0	0	0
NETHERLANDS*	133	18	124	9	9	0
NORWAY*	26	4	22	4	0	0
PORTUGAL*	79	7	72	7	0	0
SPAIN*	281	94	281	0	94	0
SWITZERLAND	1	0	1	0	0	0
TURKEY*	174	26	148	26	0	0
UNITED KINGDOM*	890	100	881	9	91	0
TOTAL-WESTERN & SOUTHERN EUROPE	9,159	1,580	8,993	166	1,414	0
*NATO COUNTRIES						
(2) EAST ASIA AND PACIFIC						
AUSTRALIA	4	3	1	3	0	0
INDONESIA	2	0	2	0	0	0
JAPAN (INCLUDING OKINAWA)	1,220	169	1,220	0	169	0

TABLE P309B
 DEPARTMENT OF DEFENSE
 OTHER DOD ORGANIZATIONS
 CIVILIAN PERSONNEL STRENGTHS BY REGIONAL AREA AND BY COUNTRY
 MILITARY FUNCTIONS

REGIONAL AREA/COUNTRY	DECEMBER 31, 1986					
	TOTAL DIRECT HIRE	TOTAL FOREIGN NATIONALS	U.S. CITIZENS DIRECT HIRE	FOREIGN NATIONALS DIRECT HIRE	FOREIGN NATIONALS INDIRECT HIRE	FOREIGN NATIONALS INDIRECT HIRE
PHILIPPINES	677	96	582	85	1	0
REPUBLIC OF KOREA	316	63	253	63	0	0
SINGAPORE	1	0	1	0	0	0
THAILAND	4	3	1	3	0	0
TOTAL - EAST ASIA & PACIFIC	2,224	334	2,060	164	170	0
(3) AFRICA, NEAR EAST AND SOUTH ASIA						
BAHRAIN	52	12	40	12	0	0
BRITISH INDIAN OCEAN TERRITORY (INCLUDES DIEGO GARCIA)	1	0	1	0	0	0
KENYA	1	0	1	0	0	0
SAUDI ARABIA	7	0	7	0	0	0
ZAMBIA	1	1	0	1	0	0
TOTAL - AFRICA, NEAR EAST & SOUTH ASIA	62	13	49	13	0	0
(4) WESTERN HEMISPHERE						
ANTIGUA	4	0	4	0	0	0
BERMUDA	37	1	36	1	0	0
BOLIVIA	4	2	2	2	0	0
BRAZIL	3	2	1	2	0	0
CANADA	39	28	11	28	0	0
CHILE	3	1	2	1	0	0
COLOMBIA	3	3	1	2	1	0
COSTA RICA	2	1	1	1	0	0
CUBA (GUANTANAMO)	59	1	58	1	0	0
DOMINICAN REPUBLIC	4	3	1	3	0	0
ECUADOR	4	2	2	2	0	0
EL SALVADOR	1	0	1	0	0	0
GUATEMALA	3	2	1	2	0	0
HONDURAS	2	1	1	1	0	0
MEXICO	4	3	1	3	0	0
PANAMA	608	35	573	35	0	0
PARAGUAY	6	3	3	3	0	0

TABLE P3098

DEPARTMENT OF DEFENSE
OTHER DOD ORGANIZATIONS
CIVILIAN PERSONNEL STRENGTHS BY REGIONAL AREA AND BY COUNTRY
MILITARY FUNCTIONS

REGIONAL AREA/COUNTRY	DECEMBER 31, 1986					
	TOTAL DIRECT HIRE	TOTAL FOREIGN NATIONALS	U.S. CITIZENS DIRECT HIRE	FOREIGN NATIONALS DIRECT HIRE	FOREIGN NATIONALS INDIRECT HIRE	FOREIGN NATIONALS INDIRECT HIRE
PERU	3	1	2	1	0	0
VENEZUELA	4	2	2	2	0	0
TOTAL -WESTERN HEMISPHERE	793	91	703	90	1	1
TOTAL FOREIGN COUNTRIES	12,238	2,018	11,805	433	1,585	1,585
TOTAL WORLDWIDE	88,325	2,099	87,811	514	1,585	1,585

NOTE: EXCLUDES SPECIAL EMPLOYMENT CATEGORIES FOR STUDENTS
AND DISADVANTAGED YOUTH

SECTION 3

**DEPARTMENT OF DEFENSE
DEPENDENTS OF
MILITARY AND CIVILIAN PERSONNEL**

TABLE P14
 DEPARTMENT OF DEFENSE
 SUMMARY OF DEPENDENTS OF MILITARY & CIVILIAN PERSONNEL
 SEPTEMBER 30, 1986

A. TYPE OF DEPENDENTS OF ACTIVE DUTY MILITARY PERSONNEL					
DEPENDENT RELATIONSHIP	TOTAL DEPARTMENT OF DEFENSE	ARMY	NAVY	MARINE CORPS	ATR FORCE
SPOUSES	1,177,255	412,982	291,825	87,658	384,790
CHILDREN	1,667,431	671,822	379,308	118,243	498,058
PARENTS	35,116	27,620	3,007	600	3,889
ALL OTHER	38,215	37,976	239	0	0
TOTAL DEPENDENTS	2,918,017	1,150,400	674,379	206,501	886,737

B. LOCATION OF DEPENDENTS OF ACTIVE DUTY MILITARY PERSONNEL					
LOCATION	TOTAL DEPARTMENT OF DEFENSE	ARMY	NAVY	MARINE CORPS	ATR FORCE
CONTINENTAL U. S.	2,420,969	915,019	606,503	190,125	709,322
ALASKA	27,277	10,622	1,351	80	15,224
HAWAII	53,428	15,739	19,761	8,182	9,746
U. S. TERRITORIES	15,337	965	8,655	266	5,451
FOREIGN COUNTRIES	401,006	208,055	38,109	7,848	146,994
WORLDWIDE	2,918,017	1,150,400	674,379	206,501	886,737

TABLE P14 (concluded)
 DEPARTMENT OF DEFENSE
 SUMMARY OF DEPENDENTS OF MILITARY & CIVILIAN PERSONNEL
 SEPTEMBER 30, 1986

C. DEPENDENTS OF U.S. CITIZENS CIVILIAN EMPLOYEES A/

LOCATION	TOTAL DEPARTMENT OF DEFENSE	ARMY	NAVY	AIR FORCE	OTHER DOD ORGANIZATIONS
ALASKA	653	457	183	0	13
HAWAII	779	131	583	0	65
U.S. TERRITORIES	681	82	460	82	57
FOREIGN COUNTRIES	29,356	18,635	3,948	6,167	606
ALL LOCATIONS ABOVE	31,469	19,305	5,174	6,249	741

A/ FOR ALASKA, HAWAII AND U.S. TERRITORIES EXCLUDED ARE DEPENDENTS OF CITIZENS WHO ARE EMPLOYED IN THE STATE OR TERRITORY OF THEIR RESIDENCE

TABLE P309C
DEPARTMENT OF DEFENSE
DEPENDENT STRENGTHS BY REGIONAL AREA AND BY COUNTRY

SEPTEMBER 30, 1986

REGIONAL AREA/COUNTRY	TOTAL DEPENDENTS OF MILITARY AND CIVILIAN EMPLOYEES					AIR FORCE	MARINE CORPS	NAVY	OTHER DOD ORGANIZATIONS
	TOTAL	ARMY	NAVY	MARINE CORPS	AIR FORCE				
U S TERRITORY AND SPECIAL LOCATIONS									
CONTINENTAL UNITED STATES (CONUS)	2,420,969	915,019	606,503	190,125	709,322	0			
ALASKA	27,930	11,079	1,534	80	15,224	13			
HAWAII	54,207	15,870	20,344	8,182	9,746	65			
AMERICAN SAMOA	5	5	0	0	0	0			
GUAM	11,894	31	6,222	176	5,458	7			
PUERTO RICO	4,062	978	2,875	90	5,744	45			
TRUST TERRITORY OF THE PACIFIC ISLANDS	8	3	0	0	0	5			
VIRGIN ISLANDS OF THE U.S.	48	30	18	0	0	0			
WAKE ISLAND	1	0	0	0	1	0			
TOTAL-U.S. TERR. & SPECIAL LOCATIONS	2,519,124	943,015	637,496	198,653	739,825	135			
(1) WESTERN & SOUTHERN EUROPE									
AUSTRIA	17	13	1	0	3	0			
BELGIUM*	4,145	2,612	160	26	1,265	82			
CYPRUS	8	6	0	2	0	0			
DENMARK*	94	34	20	7	33	0			
FINLAND	15	8	2	3	2	0			
FRANCE*	87	24	18	7	36	2			
GERMANY (FED. REPUBLIC & WEST BERLIN)*	237,826	186,548	352	92	50,560	274			
GIBRALTAR	2	0	2	0	0	0			
GREECE*	3,289	470	329	7	2,473	10			
GREENLAND*	1	0	0	0	1	0			
ICELAND*	2,142	0	1,353	38	751	0			
IRELAND	9	4	5	0	0	0			
ITALY*	16,195	4,936	5,902	141	5,203	13			
LUXEMBOURG*	5	0	0	2	0	3			
NETHERLANDS*	3,650	1,030	30	7	2,582	1			
NORWAY*	334	52	39	31	212	0			
PORTUGAL*	2,085	27	439	0	1,618	1			
SPAIN*	11,218	26	3,754	124	7,312	2			
SWEDEN	24	2	5	0	17	0			
SWITZERLAND	13	1	0	7	5	0			
TURKEY*	4,282	540	29	6	3,707	0			
UNITED KINGDOM*	37,690	339	4,395	244	32,697	15			

TABLE P309C
 DEPARTMENT OF DEFENSE
 DEPENDENT STRENGTHS BY REGIONAL AREA AND BY COUNTRY
 SEPTEMBER 30, 1986

REGIONAL AREA/COUNTRY	TOTAL DEPENDENTS OF MILITARY AND CIVILIAN EMPLOYEES						OTHER DOD ORGANIZATIONS
	TOTAL	ARMY	NAVY	MARINE CORPS	AIR FORCE		
TOTAL-WESTERN & SOUTHERN EUROPE	323,131	196,672	16,835	744	108,477	403	
*NATO COUNTRIES							
(2) EAST ASIA AND PACIFIC							
ASHMORE AND CARTIER ISLANDS							
AUSTRALIA	736	0	313	0	414	0	0
BURMA	11	6	0	2	3	0	0
CHINA	25	9	8	3	5	0	0
HONG KONG	67	35	17	6	9	0	0
INDONESIA	71	13	34	2	22	0	0
JAPAN (INCLUDING OKINAWA)	44,310	3,767	11,146	6,268	23,095	34	0
DEMOCRATIC PEOPLES REPUBLIC OF KOREA	1	0	1	0	0	0	0
MALAYSIA	26	17	0	1	8	0	0
NEW ZEALAND	75	2	52	155	19	0	0
PHILIPPINES	21,502	41	8,398	90	12,894	14	0
REPUBLIC OF KOREA	16,049	11,972	435		3,541	11	0
SINGAPORE	43	5	23	3	6	6	0
THAILAND	150	55	21	1	72	1	0
WALLIS AND FUTUNA	1	0	1	0	0	0	0
WESTERN SAMOA	3	0	3	0	0	0	0
TOTAL-EAST ASIA & PACIFIC	83,071	15,925	20,453	6,539	40,088	66	0
(3) AFRICA, NEAR EAST AND SOUTH ASIA							
ALGERIA	16	10	0	2	4	0	0
BAHRAIN	85	0	64	4	6	11	0
BANGLADESH	13	9	0	4	0	0	0
BURKINA FASO	2	0	0	2	0	0	0
CAMEROON	7	4	0	2	1	0	0
CHAD	3	2	0	1	0	0	0
CONGO	1	0	0	1	0	0	0
DJIBOUTI	1	0	0	1	0	0	0
EGYPT	106	6	33	5	62	0	0
ETHIOPIA	4	0	0	4	0	0	0
GHANA	5	4	1	0	0	0	0
INDIA	33	7	4	5	17	0	0

TABLE P309C
DEPARTMENT OF DEFENSE
DEPENDENT STRENGTHS BY REGIONAL AREA AND BY COUNTRY

SEPTEMBER 30, 1986

REGIONAL AREA/COUNTRY	TOTAL DEPENDENTS OF MILITARY AND CIVILIAN EMPLOYEES						OTHER DOO ORGANIZATIONS
	TOTAL	ARMY	NAVY	MARINE CORPS	AIR FORCE		
ISRAEL	57	11	0	7	39	0	0
IVORY COAST	15	6	0	4	5	0	0
JORDAN	60	54	0	2	4	0	0
KENYA	14	0	3	8	3	0	0
KUWAIT	14	1	10	0	3	0	0
LEBANON	10	0	0	0	0	0	0
LIBERIA	23	18	2	0	3	0	0
MADAGASCAR	3	0	0	3	0	0	0
MALAWI	5	5	0	0	0	0	0
MAURITANIA	2	0	0	2	0	0	0
MAURITIUS	3	0	0	3	0	0	0
MOROCCO	19	7	0	4	8	0	0
NEPAL	6	2	0	4	0	0	0
NIGER	4	4	0	0	0	0	0
NIGERIA	10	1	2	2	5	0	0
OMAN	12	0	0	7	5	0	0
PAKISTAN	35	14	0	6	15	0	0
REPUBLIC OF CAPE VERDE	3	0	3	0	0	0	0
ST. HELENA (INCLUDES ASCENSION ISLAND)	3	0	0	0	3	0	0
SAUDI ARABIA	1,442	1,108	18	8	293	15	0
SENEGAL	3	0	2	1	0	0	0
SEYCHELLES	3	0	0	0	3	0	0
SOMALIA	17	3	4	0	10	0	0
SOUTH AFRICA	26	7	5	5	9	0	0
SRI LANKA	5	0	5	0	0	0	0
SUDAN	1	0	0	0	1	0	0
SYRIA	11	7	0	0	0	0	0
TANZANIA, UNITED REPUBLIC OF	3	0	0	3	0	0	0
TOGO	2	0	0	2	0	0	0
TUNISIA	31	20	0	2	9	0	0
UNITED ARAB EMIRATES	6	0	0	3	3	0	0
YEMEN (SANA'A)	6	2	0	4	0	0	0
ZAIRE	34	21	0	1	12	0	0
ZAMBIA	3	0	0	3	0	0	0
ZIMBABWE	8	7	0	1	0	0	0
TOTAL-AFRICA, NEAR EAST & SOUTH ASIA	2,175	1,350	156	120	523	26	0

TABLE P309C
DEPARTMENT OF DEFENSE
DEPENDENT STRENGTHS BY REGIONAL AREA AND BY COUNTRY

SEPTEMBER 30, 1986

TOTAL DEPENDENTS OF MILITARY AND CIVILIAN EMPLOYEES

REGIONAL AREA/COUNTRY	TOTAL	ARMY	NAVY	MARINE CORPS	AIR FORCE	OTHER DOD ORGANIZATIONS
(4) WESTERN HEMISPHERE						
ANTIGUA	52	0	51	0	1	0
ANGUILLA	2	0	2	0	0	0
ARGENTINA	32	10	6	0	16	0
BAHAMAS	48	0	44	1	3	0
BARBADOS	16	13	3	0	0	0
BELIZE	8	5	3	0	0	0
BERMUDA	1,227	0	1,180	47	0	0
BOLIVIA	45	23	2	4	7	9
BRAZIL	70	41	11	4	13	1
CANADA	676	8	469	0	186	13
CHILE	29	7	8	5	5	4
COLOMBIA	45	41	2	0	2	0
COSTA RICA	19	14	1	3	0	1
CUBA (GUANTANAMO)	2,306	0	2,135	169	1	1
DOMINICAN REPUBLIC	43	9	19	4	10	1
ECUADOR	43	18	6	4	12	3
EL SALVADOR	39	31	0	2	5	1
GRENADA	3	0	0	3	0	0
GUATEMALA	25	16	1	8	0	0
GUYANA	5	0	5	0	0	0
HAITI	17	1	15	0	1	0
HONDURAS	58	30	2	4	22	0
JAMAICA	18	0	15	3	0	0
MEXICO	70	21	32	3	14	0
NETHERLANDS ANTILLES	3	0	3	0	0	0
NICARAGUA	4	1	0	0	3	0
PANAMA	16,696	12,253	562	155	3,663	63
PARAGUAY	25	13	2	3	3	4
PERU	58	21	14	3	17	3
ST CHRISTOPHER-NEVIS-ANGUILLA	1	0	1	0	0	0
SURINAME	8	8	0	0	0	0
TRINIDAD AND TOBAGO	4	0	4	0	0	0
URUGUAY	20	16	0	0	4	0
VENEZUELA	77	31	0	0	39	7
TOTAL-WESTERN HEMISPHERE	21,792	12,631	4,598	425	4,027	111

TABLE P309C

DEPARTMENT OF DEFENSE
DEPENDENT STRENGTHS BY REGIONAL AREA AND BY COUNTRY

SEPTEMBER 30, 1986

REGIONAL AREA/COUNTRY	TOTAL DEPENDENTS OF MILITARY AND CIVILIAN EMPLOYEES						OTHER DOD ORGANIZATIONS
	TOTAL	ARMY	NAVY	MARINE CORPS	AIR FORCE		
(6) EASTERN EUROPE							
BULGARIA	15	4	0	2	9	0	
CZECHOSLOVAKIA	5	1	0	1	3	0	
GERMAN DEMOCRATIC REPUBLIC	68	67	1	0	0	0	
HUNGARY	9	6	0	2	1	0	
POLAND	9	6	0	0	3	0	
ROMANIA	6	3	0	0	0	0	
UNION OF SOVIET SOCIALIST REPUBLICS	54	15	11	8	20	0	
YUGOSLAVIA	27	10	3	4	10	0	
TOTAL-EASTERN EUROPE	193	112	15	20	46	0	
TOTAL FOREIGN COUNTRIES	430,362	226,690	42,057	7,848	153,161	606	
TOTAL WORLDWIDE	2,949,486	1,169,705	679,553	206,501	892,986	741	

NOTE: DEPENDENTS OF CIVILIAN EMPLOYEES EXCLUDES DEPENDENTS OF U.S. CITIZEN RESIDENTS AND EMPLOYED IN THE STATE OR TERRITORY OF THEIR RESIDENCE IN ALASKA, HAWAII, AND U.S.

TABLE P309C

DEPARTMENT OF DEFENSE
DEPENDENT STRENGTHS BY REGIONAL AREA AND BY COUNTRY

SEPTEMBER 30, 1986

DEPENDENTS OF ACTIVE DUTY MILITARY

REGIONAL AREA/COUNTRY	TOTAL	ARMY	NAVY	MARINE CORPS	AIR FORCE
U S TERRITORY AND SPECIAL LOCATIONS					
CONTINENTAL UNITED STATES (CONUS)	2,420,969	915,019	606,503	190,125	709,322
ALASKA	27,277	10,622	1,351	80	15,224
HAWAII	53,428	15,739	19,761	8,182	9,746
AMERICAN SAMOA	5	5	0	0	0
GUAM	11,518	31	5,935	176	5,376
PUERTO RICO	3,762	896	2,702	90	74
TRUST TERRITORY OF THE PACIFIC ISLANDS	3	3	0	0	0
VIRGIN ISLANDS OF THE U S	48	30	18	0	0
WAKE ISLAND	1	0	0	0	1
TOTAL-U S TERR & SPECIAL LOCATIONS	2,517,011	942,345	636,270	198,653	739,743
(1) WESTERN & SOUTHERN EUROPE					
AUSTRIA	17	13	1	0	3
BELGIUM*	3,772	2,361	160	26	1,225
CYPRUS	8	6	0	2	0
DENMARK*	94	34	20	7	33
FINLAND	15	8	2	3	2
FRANCE*	77	20	18	7	32
GERMANY (FED REPUBLIC & WEST BERLIN)*	225,842	176,212	348	92	49,190
GIBRALTAR	2	0	2	0	0
GREECE*	3,139	470	295	7	2,367
GREENLAND*	1	0	0	0	1
ICELAND*	2,100	0	1,311	38	751
IRELAND	9	4	5	0	0
ITALY*	15,072	4,584	5,249	141	5,098
LUXEMBOURG*	2	0	0	2	0
NETHERLANDS*	3,464	909	30	7	2,518
NORWAY*	334	52	39	31	212
PORTUGAL*	2,002	26	437	0	1,539
SPAIN*	10,434	26	3,388	124	6,896
SWEDEN	24	2	5	0	17
SWITZERLAND	13	1	0	7	5
TURKEY*	4,161	540	29	6	3,586
UNITED KINGDOM*	36,169	319	4,190	244	31,416

TABLE P309C

DEPARTMENT OF DEFENSE
DEPENDENT STRENGTHS BY REGIONAL AREA AND BY COUNTRY

SEPTEMBER 30, 1988

DEPENDENTS OF ACTIVE DUTY MILITARY

REGIONAL AREA/COUNTRY	TOTAL	ARMY	NAVY	MARINE CORPS	AIR FORCE
TOTAL-WESTERN & SOUTHERN EUROPE	306,751	185,587	15,529	744	104,891
*NATO COUNTRIES					
(2) EAST ASIA AND PACIFIC					
ASHMORE AND CARTIER ISLANDS				0	0
AUSTRALIA	1	0	1	0	0
BURMA	733	3	310	6	414
CHINA	11	6	0	2	3
HONG KONG	25	9	8	3	5
INDONESIA	67	35	17	6	9
	66	13	29	2	22
JAPAN (INCLUDING OKINAWA)					
DEMOCRATIC PEOPLES REPUBLIC OF KOREA	40,458	2,710	10,101	6,268	21,379
MALAYSIA	1	0	1	0	0
NEW ZEALAND	26	17	0	1	8
PHILIPPINES	75	2	52	2	19
REPUBLIC OF KOREA	20,167	41	7,554	155	12,417
	14,196	10,380	404	90	3,322
SINGAPORE	25	5	13	3	4
THAILAND	147	55	20	1	71
WALLIS AND FUTUNA	1	0	1	0	0
WESTERN SAMOA	3	0	3	0	0
TOTAL-EAST ASIA & PACIFIC	76,002	13,276	18,514	6,539	37,673
(3) AFRICA, NEAR EAST AND SOUTH ASIA					
ALGERIA	16	10	0	2	4
BAHRAIN	74	0	64	4	6
BANGLADESH	13	9	0	4	0
BURKINA FASO	2	0	0	2	0
CAMEROON	7	4	0	2	1
CHAD	3	2	0	1	0
CONGO	1	0	0	1	0
DJIBOUTI	1	0	0	1	0
EGYPT	87	6	33	5	43
ETHIOPIA	4	0	0	4	0
GHANA	5	4	1	0	0
INDIA	33	7	4	5	17

TABLE P309C

DEPARTMENT OF DEFENSE
DEPENDENT STRENGTHS BY REGIONAL AREA AND BY COUNTRY

SEPTEMBER 30, 1986

DEPENDENTS OF ACTIVE DUTY MILITARY

REGIONAL AREA/COUNTRY	TOTAL	ARMY	NAVY	MARINE CORPS	AIR FORCE
ISRAEL	37	11	0	7	19
IVORY COAST	15	6	0	4	5
JORDAN	60	54	0	2	4
KENYA	14	0	3	8	3
KUWAIT	8	1	4	0	3
LEBANON	10	10	0	0	0
LIBERIA	23	18	2	0	3
MADAGASCAR	3	0	0	3	0
MALAWI	5	5	0	0	0
MAURITANIA	2	0	0	2	0
MAURITIUS	3	0	0	3	0
MOROCCO	19	7	0	7	8
NEPAL	6	2	0	4	0
NIGER	4	4	0	0	0
NIGERIA	10	1	2	2	5
OMAN	12	0	0	7	5
PAKISTAN	35	14	0	6	15
REPUBLIC OF CAPE VERDE	3	0	3	0	0
ST. HELENA (INCLUDES ASCENSION ISLAND)	3	0	0	0	3
SAUDI ARABIA	389	112	18	8	251
SENEGAL	3	0	2	1	0
SEYCHELLES	3	0	0	0	3
SOMALIA	12	3	4	0	5
SOUTH AFRICA	26	7	5	5	9
SRI LANKA	5	0	5	0	0
SUDAN	1	0	0	0	1
SYRIA	11	7	0	4	0
TANZANIA, UNITED REPUBLIC OF	3	0	0	3	0
TOGO	2	0	0	2	0
TUNISIA	30	20	0	2	8
UNITED ARAB EMIRATES	6	0	0	3	3
YEMEN (SANA'A)	6	2	0	4	0
ZAIRE	34	21	0	1	12
ZAMBIA	3	0	0	3	0
ZIMBABWE	8	7	0	1	0
TOTAL-AFRICA, NEAR EAST & SOUTH ASIA	1,060	354	150	120	436

TABLE P309C

DEPARTMENT OF DEFENSE
DEPENDENT STRENGTHS BY REGIONAL AREA AND BY COUNTRY

SEPTEMBER 30, 1986

DEPENDENTS OF ACTIVE DUTY MILITARY

REGIONAL AREA/COUNTRY	TOTAL	ARMY	NAVY	MARINE CORPS	AIR FORCE
(4) WESTERN HEMISPHERE					
ANTIGUA	52	0	51	0	1
ANGUILLA	2	0	2	0	0
ARGENTINA	32	10	6	0	16
BAHAMAS, THE	38	0	34	1	3
BARBADOS	16	13	3	0	0
BELIZE	8	5	3	0	0
BERMUDA	907	0	860	47	0
BOLIVIA	31	18	2	4	7
BRAZIL	67	39	11	4	13
CANADA	651	8	459	0	184
CHILE	25	7	8	5	5
COLOMBIA	13	9	2	0	2
COSTA RICA	18	14	1	3	0
CUBA (GUANTANAMO)	1,963	0	1,793	169	0
DOMINICAN REPUBLIC	42	9	19	4	10
ECUADOR	40	18	6	4	12
EL SALVADOR	38	31	0	2	5
GRENADA	3	0	0	3	0
GUATEMALA	25	16	1	8	0
GUYANA	5	0	5	0	0
HAITI	17	1	15	0	1
HONDURAS	56	28	2	4	22
JAMAICA	18	0	15	3	0
MEXICO	70	21	32	3	14
NETHERLANDS ANTILLES	3	0	3	0	0
NICARAGUA	4	1	0	0	3
PANAMA	12,677	8,389	547	155	3,586
PARAGUAY	21	13	2	3	3
PERU	55	21	14	3	17
ST CHRISTOPHER-NEVIS-ANGUILLA	1	0	1	0	0
SURINAME	8	8	0	0	0
TRINIDAD AND TOBAGO	4	0	4	0	0
URUGUAY	20	16	0	0	4
VENEZUELA	70	31	0	0	39
TOTAL-WESTERN HEMISPHERE	17,000	8,726	3,901	425	3,948

TABLE P309C

DEPARTMENT OF DEFENSE
DEPENDENT STRENGTHS BY REGIONAL AREA AND BY COUNTRY

SEPTEMBER 30, 1986

DEPENDENTS OF ACTIVE DUTY MILITARY

REGIONAL AREA/COUNTRY	TOTAL	ARMY	NAVY	MARINE CORPS	AIR FORCE
(6) EASTERN EUROPE					
BULGARIA	15	4	0	2	9
CZECHOSLOVAKIA	5	1	0	1	3
GERMAN DEMOCRATIC REPUBLIC	68	67	1	0	0
HUNGARY	9	6	0	2	1
POLAND	9	6	0	0	3
ROMANIA	6	3	0	3	0
UNION OF SOVIET SOCIALIST REPUBLICS	54	15	11	8	20
YUGOSLAVIA	27	10	3	4	10
TOTAL-EASTERN EUROPE	193	112	15	20	46
MILITARY DEPENDENTS IN FOREIGN COUNTRIES					
COMMAND SPONSORED	372,564	193,077	34,476	3,142	141,869
NON-COMMAND SPONSORED	28,545	14,978	3,633	4,708	5,228
TOTAL-FOREIGN COUNTRIES	401,006	208,055	38,109	7,848	146,994
TOTAL WORLDWIDE	2,918,017	1,150,400	674,379	206,501	886,737

TABLE P309C

DEPARTMENT OF DEFENSE
DEPENDENT STRENGTHS BY REGIONAL AREA AND BY COUNTRY

SEPTEMBER 30, 1986

DEPENDENTS OF U.S. CITIZEN CIVILIAN EMPLOYEES

REGIONAL AREA/COUNTRY	TOTAL	ARMY	NAVY	AIR FORCE	OTHER DOD ORGANIZATIONS
U. S. TERRITORY AND SPECIAL LOCATIONS					
ALASKA	653	457	183	0	13
HAWAII	779	131	583	0	65
GUAM	376	0	287	82	7
PUERTO RICO	300	82	173	0	45
TRUST TERRITORY OF THE PACIFIC ISLANDS	5	0	0	0	5
TOTAL-U.S. TERR. & SPECIAL LOCATIONS	2,113	670	1,226	82	135
(1) WESTERN & SOUTHERN EUROPE					
BELGIUM*	373	251	0	40	82
FRANCE*	10	4	0	4	2
GERMANY (FED. REPUBLIC & WEST BERLIN)*	11,984	10,336	4	1,370	274
GREECE*	150	0	34	106	10
ICELAND*	42	0	42	0	0
ITALY*	1,123	352	653	105	13
LUXEMBOURG*	3	0	0	0	3
NETHERLANDS*	186	121	0	64	1
PORTUGAL*	83	1	2	79	1
SPAIN*	784	0	366	416	2
TURKEY*	121	0	0	121	0
UNITED KINGDOM*	1,521	20	205	1,281	15
TOTAL-WESTERN & SOUTHERN EUROPE	16,380	11,085	1,306	3,586	403
*NATO COUNTRIES					
(2) EAST ASIA AND PACIFIC					
AUSTRALIA	3	0	3	0	0
INDONESIA	5	0	5	0	0
JAPAN (INCLUDING OKINAWA)	3,852	1,057	1,045	1,716	34
PHILIPPINES	1,335	0	844	477	14
REPUBLIC OF KOREA	1,853	1,592	31	219	11
SINGAPORE	18	0	10	2	6
THAILAND	3	0	1	1	1
TOTAL-EAST ASIA & PACIFIC	7,069	2,649	1,939	2,415	66

TABLE P309C

DEPARTMENT OF DEFENSE
DEPENDENT STRENGTHS BY REGIONAL AREA AND BY COUNTRY

SEPTEMBER 30, 1986

DEPENDENTS OF U.S. CITIZEN CIVILIAN EMPLOYEES

REGIONAL AREA/COUNTRY	TOTAL	ARMY	NAVY	AIR FORCE	OTHER DOD ORGANIZATIONS
(3) AFRICA, NEAR EAST AND SOUTH ASIA					
BAHRAIN	11	0	0	0	11
EGYPT	19	0	0	19	0
ISRAEL	20	0	0	20	0
KUWAIT	6	0	6	0	0
SAUDI ARABIA	1,053	986	0	42	15
SOMALIA	5	0	0	5	0
TUNISIA	1	0	0	1	0
TOTAL - AFRICA, NEAR EAST & SOUTH ASIA	1,115	986	6	87	26
(4) WESTERN HEMISPHERE					
BAHAMAS, THE	10	0	10	0	0
BERMUDA	320	0	320	0	0
BOLIVIA	14	5	0	0	9
BRAZIL	3	2	0	0	1
CANADA	25	0	10	2	13
CHILE	4	0	0	0	4
COLOMBIA	32	32	0	0	0
COSTA RICA	1	0	0	0	1
CUBA (GUANTANAMO)	343	0	342	0	1
DOMINICAN REPUBLIC	1	0	0	0	1
ECUADOR	3	0	0	0	3
EL SALVADOR	1	0	0	0	1
HONDURAS	2	2	0	0	0
PANAMA	4,019	3,864	15	77	63
PARAGUAY	4	0	0	0	4
PERU	3	0	0	0	3
VENEZUELA	7	0	0	0	7
TOTAL - WESTERN HEMISPHERE	4,792	3,905	697	79	111
TOTAL FOREIGN COUNTRIES	29,356	18,635	3,948	6,167	606
TOTAL WORLDWIDE	31,469	19,305	5,174	6,249	741

GLOSSARY OF TERMS

Active Duty. Full-time duty in the active service of a uniformed service, including duty on the active list, full-time training duty, annual training duty, and attendance while in the active service, at a school designated as a service school or by law or by the Secretary concerned.

Actual Strength. The number of personnel in or projected to be in an organization or account at a specified point in time.

Assigned Strength. Actual strength of an entire service, not necessarily equal to combined unit actual strengths since individuals may be assigned but not joined.

Authorized Strength. The total strength authorized by Congress (for internal Service applications only).

Continental United States. Unless otherwise qualified, means the 48 contiguous states and the District of Columbia.

Direct Hire Civilians. Employees hired directly by an agency of the Department of Defense (DoD). Included are foreign nationals hired by the Department of Defense to support DoD activities in their home countries.

Indirect Hire Civilians. Foreign nationals assigned to support U.S. forces through contracts or agreements with foreign governments (or agencies thereof). These personnel are employees of the foreign governments involved.

Military Afloat. Navy and Marine Corps military personnel aboard ship. Also includes Navy and Marine Corps military personnel who are assigned to afloat and mobile units, such as aircraft squadrons, construction battalions, and fleet and air command staffs, and who are aboard ship.

Military Functions. Activities normally associated with the uniformed services.

Military Temporarily Shore-Based. Navy and Marine Corps military personnel assigned to afloat and mobile units, such as aircraft squadrons, construction battalions, and fleet and air command staffs, and who are temporarily based ashore for a period that will exceed 30 days.

Operating Location. Operating location is defined as the geographic location where military or civilian employees of the Department of Defense are physically located for the performance of duties.

OTHER DEPARTMENT OF DEFENSE ORGANIZATIONS

- *Office of the Secretary of Defense (OSD)
- *Joint Chiefs of Staff (JCS)
- *Inspector General of the Department of Defense

Department of Defense Agencies:

- *Defense Advanced Research Projects Agency (DARPA)
- Defense Communications Agency (DCA)
- Defense Contract Audit Agency (DCAA)
- *Defense Investigative Service (DIS)
- Defense Legal Services Agency (DLSA)
- Defense Logistics Agency (DLA)
- Defense Mapping Agency (DMA)
- Defense Nuclear Agency (DNA)
- *Defense Security Assistance Agency (DSAA)
- Joint Tactical Command, Control & Communications Agency (JTCCCA)
- *Strategic Defense Initiative Organization

*Organizations serviced by OSD.

Department of Defense Field Activities:

- *American Forces Information Service (AFIS)
- *Defense Information Service Activity (DISA)
- *Defense Medical Systems Support Center (DMSSC)
- *Defense Technology Security Administration (DTSA)
- *Department of Defense Dependents Schools
(DODDS) (Headquarters Only)
- *Office of Civilian Health and Medical Program
Office (OCHAMPUS)
- *Office of Economic Adjustment (OEA)

*U.S. Court of Military Appeals

Uniformed Services University of the Health Sciences (USUHS)

Recorded Duty Station. Actual physical location where active duty on a military personnel perform duty on a permanent basis.

Transients. All military members who are available for duty while executing permanent change of station (PCS) orders. Transients shall comprise all military personnel in a travel, proceed, leave enroute or temporary duty enroute status on PCS orders to execute an accession, separation, training, operational or rotational move.

*Organizations serviced by OSD