

AD-A181 789

INTEGRATED INFORMATION SUPPORT SYSTEM (IISS) VOLUME 5

1/1

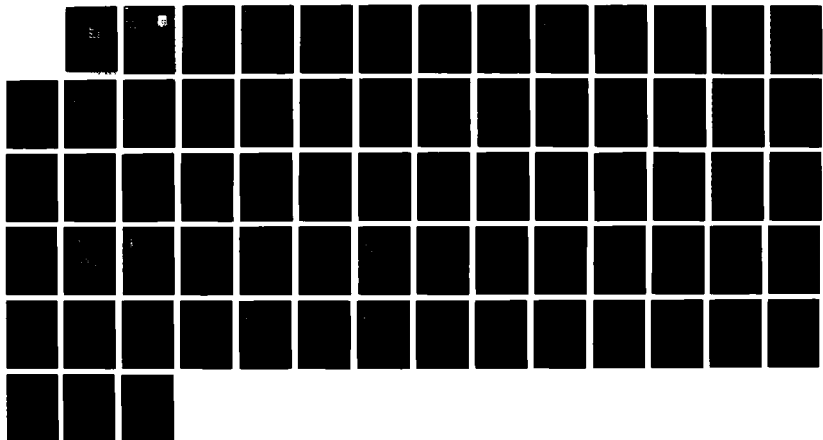
COMMON DATA MODEL 5. (U) GENERAL ELECTRIC CO

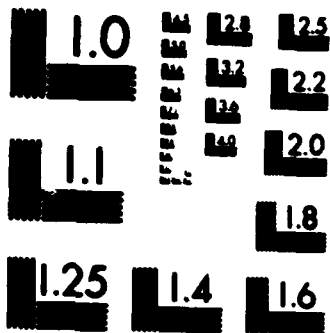
SCHENECTADY NY PRODUCTION RESOURCES CONSU.

UNCLASSIFIED

M L APICELLA ET AL. 01 NOV 85 PS-620141256 F/8 12/5

NL





MICROCOPY RESOLUTION TEST CHART  
NATIONAL BUREAU OF STANDARDS 1963-A

**DTIC FILE COPY**

2

**AFVAL-TR-86-4006  
Volume V  
Part 21**

**AD-A181 709**



**INTEGRATED INFORMATION  
SUPPORT SYSTEM (IISS)  
Volume V - Common Data Model Subsystem  
Part 21 - MDML Precompiler Generate Total Request Processor  
Product Specification**

**General Electric Company  
Production Resources Consulting  
One River Road  
Schenectady, New York 12345**

**Final Report for Period 22 September 1980 - 31 July 1985  
November 1985**

**Approved for public release; distribution is unlimited.**

**MATERIALS LABORATORY  
AIR FORCE WRIGHT AERONAUTICAL LABORATORIES  
AIR FORCE SYSTEMS COMMAND  
WRIGHT-PATTERSON AFB, OH 45433-6553**

**87**

**6 30 008A**


**DTIC  
ELECTED  
JUN 30 1987**

NOTICE

When Government drawings, specifications, or other data are used for any purpose other than in connection with a definitely related Government procurement operation, the United States Government thereby incurs no responsibility nor any obligation whatsoever; and the fact that the government may have formulated, furnished, or in any way supplied the said drawings, specifications, or other data, is not to be regarded by implication or otherwise as in any manner licensing the holder or any other person or corporation, or conveying any rights or permission to manufacture, use, or sell any patented invention that may in any way be related thereto.


This report has been reviewed by the Office of Public Affairs (ASD/PA) and is releasable to the National Technical Information Service (NTIS). At NTIS, it will be available to the general public, including foreign nations.

This technical report has been reviewed and is approved for publication.

  
\_\_\_\_\_  
DAVID L. JUDSON, PROJECT MANAGER  
AFWAL/MLTC  
WRIGHT PATTERSON AFB OH 45433

5 Aug 1986  
DATE

FOR THE COMMANDER:

  
\_\_\_\_\_  
GERALD C. SHUMAKER, BRANCH CHIEF  
AFWAL/MLTC  
WRIGHT PATTERSON AFB OH 45433

7 Aug 86  
DATE

"If your address has changed, if you wish to be removed from our mailing list, or if the addressee is no longer employed by your organization please notify AFWAL/MLTC, W-PAFB, OH 45433 to help us maintain a current mailing list."

Copies of this report should not be returned unless return is required by security considerations contractual obligations, or notice on a specific document.

Unclassified

A181 709

SECURITY CLASSIFICATION OF THIS PAGE

REPORT DOCUMENTATION PAGE

1a REPORT SECURITY CLASSIFICATION <b>Unclassified</b>		1b RESTRICTIVE MARKINGS	
2a SECURITY CLASSIFICATION AUTHORITY		3 DISTRIBUTION AVAILABILITY OF REPORT  Approved for public release; distribution is unlimited.	
2b DECLASSIFICATION/DOWNGRADING SCHEDULE			
4 PERFORMING ORGANIZATION REPORT NUMBER(S)		5 MONITORING ORGANIZATION REPORT NUMBER(S)  AFVAL-TR-86-4006 Vol V, Part 21	
6a NAME OF PERFORMING ORGANIZATION <b>General Electric Company Production Resources Consulting</b>	6b OFFICE SYMBOL <i>(if applicable)</i>	7a NAME OF MONITORING ORGANIZATION  AFVAL/MLTC	
6c ADDRESS (City, State and ZIP Code)  <b>1 River Road Schenectady, NY 12346</b>		7b ADDRESS (City, State and ZIP Code)  WPAFB, OH 45433-6533	
8a NAME OF FUNDING/SPONSORING ORGANIZATION <b>Materials Laboratory Air Force Systems Command, USAF</b>	8b OFFICE SYMBOL <i>(if applicable)</i> <b>AFVAL/MLTC</b>	9 PROCUREMENT INSTRUMENT IDENTIFICATION NUMBER  <b>F33615-80-C-8155</b>	
8c ADDRESS (City, State and ZIP Code)  <b>Wright-Patterson AFB, Ohio 45433</b>		10 SOURCE OF FUNDING NOS	
		PROGRAM ELEMENT NO. <b>78011F</b>	PROJECT NO. <b>7500</b>
		TASK NO. <b>62</b>	WORK UNIT NO. <b>01</b>
11 TITLE (Include Security Classification) <i>(See Reverse)</i>			
12 PERSONAL AUTHOR(S) <b>Apicella, H. L. and Singh, S.</b>			
13a TYPE OF REPORT <b>Final Technical Report</b>	13b TIME COVERED <b>22 Sept 1980 - 31 July 1985</b>	14 DATE OF REPORT (Yr., Mo., Day) <b>1985 November</b>	15 PAGE COUNT <b>69</b>
16 SUPPLEMENTARY NOTATION  <b>ICAM Project Priority 8201</b>		The computer software contained herein are theoretical and/or references that in no way reflect Air Force-owned or -developed computer software.	
17 COSAT CODES		18 SUBJECT TERMS (Continue on reverse if necessary and identify by block number)	
FIELD	GROUP	SUB GR	
1508	0905		
19 ABSTRACT (Continue on reverse if necessary and identify by block number)  <b>This document is the product specification establishing the design implementation of the IISS Configuration Item PRE9.4 which will generate a processor to satisfy data requests from a TOTAL database.</b>  <i>(Page 1-1)</i>			
20 DISTRIBUTION AVAILABILITY OF ABSTRACT <b>UNCLASSIFIED/UNLIMITED <input checked="" type="checkbox"/> SAME AS RPT. <input type="checkbox"/> DTIC USERS <input type="checkbox"/></b>		21 ABSTRACT SECURITY CLASSIFICATION  <b>Unclassified</b>	
22a NAME OF RESPONSIBLE INDIVIDUAL  <b>David L. Judson</b>		22b TELEPHONE NUMBER <i>(Include Area Code)</i> <b>813-255-8076</b>	22c OFFICE SYMBOL  <b>AFVAL/MLTC</b>

11. Title

Integrated Information Support System (IISS)  
Vol V - Common Data Model Subsystem  
Part 21 - NDML Precompiler Generate Total Request  
Processor Product Specification

A S D 86 1455  
17 Jul 1986



Accession For	
NTIS <input checked="" type="checkbox"/>	
DIA <input type="checkbox"/>	
Unrestricted	
Justification	
By	
Distribution	
Availability Codes	
Dist	Avail and/or Special
A1	

PREFACE

This product specification covers the work performed under Air Force Contract F33615-80-C-5155 (ICAM Project 6201). This contract is sponsored by the Materials Laboratory, Air Force Systems Command, Wright-Patterson Air Force Base, Ohio. It was administered under the technical direction of Mr. Gerald C. Shumaker, ICAM Program Manager, Manufacturing Technology Division, through Project Manager, Mr. David Judson. The Prime Contractor was Production Resources Consulting of the General Electric Company, Schenectady, New York, under the direction of Mr. Alan Rubenstein. The General Electric Project Manager was Mr. Myron Huribut of Industrial Automation Systems Department, Albany, New York.

Certain work aimed at improving Test Bed Technology has been performed by other contracts with Project 6201 performing integrating functions. This work consisted of enhancements to Test Bed software and establishment and operation of Test Bed hardware and communications for developers and other users. Documentation relating to the Test Bed from all of these contractors and projects have been integrated under Project 6201 for publication and treatment as an integrated set of documents. The particular contributors to each document are noted on the Report Documentation Page (DD1473). A listing and description of the entire project documentation system and how they are related is contained in document FTR620100001, Project Overview.

The subcontractors and their contributing activities were as follows:

TASK 4.2

<u>Subcontractors</u>	<u>Role</u>
Boeing Military Aircraft Company (BMAC)	Reviewer.
D. Appleton Company (DACOM)	Responsible for IDEF support, state-of-the-art literature search.
General Dynamics/ Ft. Worth	Responsible for factory view function and information models.

PS 620141256  
1 November 1985

<u>Subcontractors</u>	<u>Role</u>
Illinois Institute of Technology	Responsible for factory view function research (IITRI) and information models of small and medium-size business.
North American Rockwell	Reviewer.
Northrop Corporation	Responsible for factory view function and information models.
Pritsker and Associates	Responsible for IDEF2 support.
SofTech	Responsible for IDEFO support.

TASKS 4.3 - 4.9 (TEST BED)

<u>Subcontractors</u>	<u>Role</u>
Boeing Military Aircraft Company (EMAC)	Responsible for consultation on applications of the technology and on IBM computer technology.
Computer Technology Associates (CTA)	Assisted in the areas of communications systems, system design and integration methodology, and design of the Network Transaction Manager.
Control Data Corporation (CDC)	Responsible for the Common Data Model (CDM) implementation and part of the CDM design (shared with DACOM).
D. Appleton Company (DACOM)	Responsible for the overall CDM Subsystem design integration and test plan, as well as part of the design of the CDM (shared with CDC). DACOM also developed the Integration Methodology and did the schema mappings for the Application Subsystems.

<u>Subcontractors</u>	<u>Role</u>
Digital Equipment Corporation (DEC)	Consulting and support of the performance testing and on DEC software and computer systems operation.
McDonnell Douglas Automation Company (McAuto)	Responsible for the support and enhancements to the Network Transaction Manager Subsystem during 1984/1985 period.
On-Line Software International (OSI)	Responsible for programming the Communications Subsystem on the IBM and for consulting on the IBM.
Rath and Strong Systems Products (RSSP) (In 1985 became McCormack & Lodge)	Responsible for assistance in the implementation and use of the MRP II package (PIOS) that they supplied.
SofTech, Inc.	Responsible for the design and implementation of the Network Transaction Manager (NTM) in 1981/1984 period.
Software Performance Engineering (SPE)	Responsible for directing the work on performance evaluation and analysis.
Structural Dynamics Research Corporation (SDRC)	Responsible for the User Interface and Virtual Terminal Interface Subsystems.

Other prime contractors under other projects who have contributed to Test Bed Technology, their contributing activities and responsible projects are as follows:

<u>Contractors</u>	<u>ICAM Project</u>	<u>Contributing Activities</u>
Boeing Military Aircraft Company (BMAC)	1701, 2201, 2202	Enhancements for IBM node use. Technology Transfer to Integrated Sheet Metal Center (ISMC).

<u>Contractors</u>	<u>ICAM Project</u>	<u>Contributing Activities</u>
Control Data Corporation (CDC)	1502, 1701	IISS enhancements to Common Data Model Processor (CDMP).
D. Appleton Company (DACOM)	1502	IISS enhancements to Integration Methodology.
General Electric	1502	Operation of the Test Bed and communications equipment.
Hughes Aircraft Company (HAC)	1701	Test Bed enhancements.
Structural Dynamics Research Corporation (SDRC)	1502, 1701, 1703	IISS enhancements to User Interface/Virtual Terminal Interface (UI/VTI).
Systran	1502	Test Bed enhancements. Operation of Test Bed.

TABLE OF CONTENTS

		<u>Page</u>
<b>SECTION 1.0</b>	<b>SCOPE</b> .....	1-1
1.1	Identification .....	1-1
1.2	Functional Summary .....	1-1
<b>SECTION 2.0</b>	<b>DOCUMENTS</b> .....	2-1
2.1	Reference Documents .....	2-1
2.2	Terms and Abbreviations .....	2-1
<b>SECTION 3.0</b>	<b>REQUIREMENTS</b> .....	3-1
3.1	Structural Description .....	3-1
3.2	Functional Flow .....	3-1
3.3	Interfaces .....	3-2
3.3.1	Inputs/Outputs .....	3-3
3.4	Program Interrupts .....	3-3
3.5	Timing and Sequencing Description ...	3-3
3.6	Special Control Features .....	3-3
3.7	Storage Allocation .....	3-4
3.7.1	Database Definition .....	3-4
3.7.1.1	File Description .....	3-4
3.7.1.2	Table Description .....	3-4
3.7.1.3	Item Description .....	3-4
3.8	Object Code Creation .....	3-4
3.9	Adaptation Data .....	3-4
3.10	Detail Design Description .....	3-4
3.10.1	Main Program List .....	3-5
3.10.2	Module List .....	3-7
3.10.3	External Routines List .....	3-9
3.10.4	Include File List .....	3-11
3.10.5	Where Include File Used List .....	3-13
3.10.6	Where External Routine Used List ..	3-18
3.10.7	Main Program Parts List .....	3-23
3.10.8	Module Documentation .....	3-25
3.10.9	Include File Description .....	3-30
3.10.10	Hierarchy Chart .....	3-48
3.11	Program Listings Comments .....	3-55
<b>SECTION 4.0</b>	<b>QUALITY ASSURANCE PROVISIONS</b> .....	4-1
4.1	Introduction and Definitions .....	4-1
4.2	Computer Programming and Test Evaluation .....	4-1

SECTION 1

SCOPE

1.1 Identification

This specification establishes the design of Function PRE9.4, "Generate TOTAL Request Processor", one of the major functions of the Configuration Item (CI) "Precompiler" to be built and formally accepted by the ICAM Program Office. This CI constitutes one of the subsystems of the Common Data Model Processor (CDMP).

1.2 Functional Summary

The purpose of this Computer Program Configuration Item (CPCI) is to generate a COBOL program that will satisfy a retrieval or update NDML subtransaction against a TOTAL database.

The following functions will be performed by this CPCI:

1. Generate the Data Division section of the Request Processor.
  - a) Generate file description and record layout if the NDML request resulted in a retrieval subtransaction.
2. Generate the Working Storage section of the Request Processor. These working storage variables will be used for:
  - a) Conceptual/internal transformation of retrieval search parameters or update values,
  - b) Internal/conceptual transformation of retrieved data fields,
  - c) DBMS status checks and reserved words,
  - d) Retrieved qualification variables.
  - e) TOTAL file descriptions and data field descriptions.
3. Generate the Procedure Division section of the Request Processor. It will include all the code to access a particular TOTAL database in order to satisfy the NDML request. This code will consist of:

PS 620141256  
1 November 1985

- a) Interface code to the Request Processor Main program at runtime.
- b) Code to transform the retrieval search parameters or update values from conceptual to internal format.
- c) Code using DBMS specific calls to access the database to retrieve data or update data.
- d) Code to transform the retrieved data from internal to conceptual format.
- e) Code to save the retrieved data on a sequential file.
- f) Code to check DBMS status and report errors during runtime execution.

## SECTION 2

### DOCUMENTS

#### 2.1 Reference Documents

1. ICAM Documentation Standards: IDS15012000A, 28 December 1981.
2. D. Appleton Co., CDM Administrator's Manual; UM620141000, March 1984.
3. D. Appleton Co., CDM1-IDEF, Model of the Common Data Model; CCS620141000, 15 May 1985.
4. D. Appleton Co., Computer Program Development Specification (DS) for ICAM Integrated Support System (IISS) Configuration Item: NDML Precompiler; DS620141200, October 1984.
5. D. Appleton Co., Embedded NDML Programmer's Reference Manual; PRM620141200, March 1985.
6. Softech, Inc., NTM Programmer's Guide; UM620140001, July 1984.
7. Control Data Corp., Computer Development Specification (DS) for ICAM Integrated Support System (IISS) Configuration Item: NDDL Command Processor; DS620141100, June 1985.

#### 2.2 Terms and Abbreviations

Attribute Use Class: (AUC)

Conceptual Schema: (CS)

Common Data Model Processor: (CDMP)

Common Data Model: (CDM) Describes common data application process formats, form definitions, etc, of the IISS and includes conceptual schema, external, internal schemas, and schema transformation operators.

Data Field: (DF) An element of data in the external schema. It is by this name that an NDML programmer references

data.

Database Management System: (DBMS)

Distributed Request Supervisor: (DRS) This IISS CDM subsystem configuration item controls the execution of distributed NDML queries and non distributed updates.

Domain: A logical definition of legal attribute class values.

Domain Constraint: Predicate that applies to a single domain.

External Schema: (ES)

Forms: Structured views which may be imposed on windows or other forms. A form is composed of fields where each field is a form, item, or window.

Forms Processor: (FP) A set of callable execution time routines available to an application program for form processing.

Internal Schema: (IS)

Integrated Information Support System: (IISS) A test computing environment used to investigate, demonstrate and test the concepts of information management and information integration in the context of Aerospace Manufacturing. The IISS addresses the problems of integration of data resident on heterogeneous databases supported by heterogeneous computers interconnected via a local Area Network.

Mapping: The correspondence of independent objects in two schemas: ES to CS or CS to IS.

Network Transaction Manager: (NTM) Performs the coordination, communication and housekeeping functions required to integrate the application processes and system services resident on the various hosts into a cohesive system.

Neutral Data Manipulation Language: (NDML) A language developed by the IISS project to provide uniform access to common data, regardless of database manager or distribution criteria. It provides distributed retrieved and single node updates.

PS 620141256  
1 November 1985

ORACLE: Relational DBMS based on the SQL (Structured Query Language, a product of ORACLE Corp, Menlo Park, CA). The CDM is an ORACLE database.

Parcel: A sequential file containing section source code of the input application program.

Request Processor: (RP) A COBOL program that will satisfy a retrieval or update NDML subtransaction against a particular Database Management System.

User Interface: (UI) Controls the user's terminal and interfaces with the rest of the system.

Virtual Terminal Interface: (VTI) Performs the interfacing between different terminals and the UI. This is done by defining a specific set of terminal features and protocols which must be supported by UI software which constitutes the Virtual Terminal Definition. Specific terminals are then mapped against the Virtual Terminal software by specific software modules written for each type of real terminal supported.

**SECTION 3**  
**REQUIREMENTS**

**3.1 Structural Description**

A graphic portrayal of this CPCI is included in Section 3.10. This chart shows the hierarchical relationships of each module making up this CPCI.

This CPCI uses a number of lower level modules to handle specific operations such as:

1. Generate conceptual schema data definitions for retrieved data fields (CDRFT).
2. Generate internal schema data definitions for runtime search parameters (CDPRM).
3. Generate internal schema data definitions for retrieved data fields (CDRDF).
4. Generate conceptual schema data definitions for runtime search parameters or update values (CDMSG).
5. Generate Working Storage and Procedure Division code for the conceptual schema to internal schema transformation of runtime search parameters or update values (CDCI).
6. Generate Working Storage and Procedure Division code for the internal schema to conceptual schema transformation of retrieved data fields (CDIC).
7. Generate internal schema data definitions for qualified data fields (CDQDF).
8. Combine two work files into one file containing the Request Processor program (CDCWF).
9. Generate macros with the proper substitution parameters (CDMACR).

**3.2 Functional Flow**

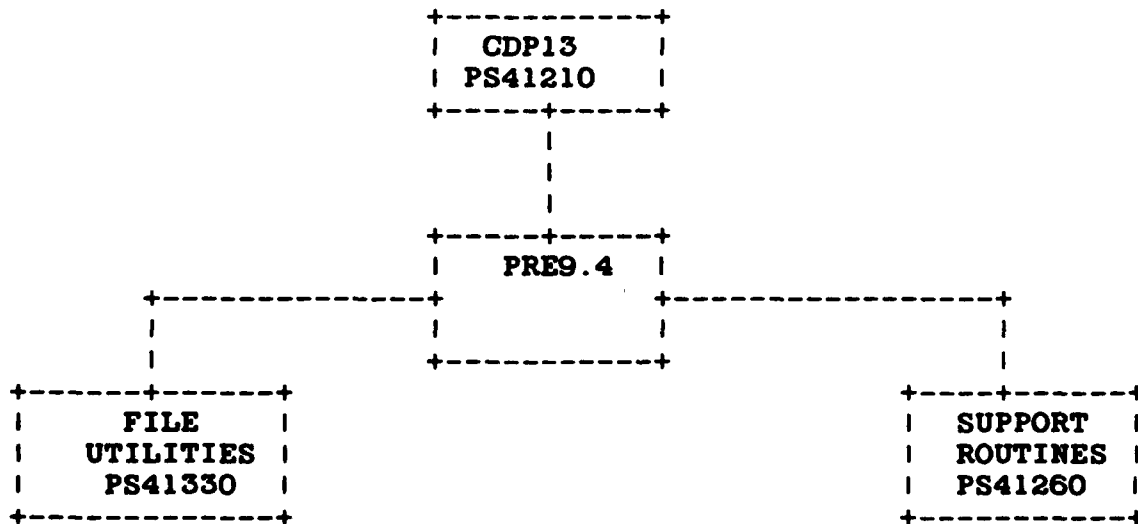
This CPCI implements the logic defined in the Development

Specification for this CPCI. Details of inputs/outputs and relationships between modules are to be found in Section 3.10.

This CPCI has been designated to operate in a batch or interactive mode. It must operate in the system environment established for IISS; that is, use of the Network Transaction Manager. It must use the ORACLE Database Management System installed on a DEC VAX computer.

### 3.3 Interfaces

The following diagram depicts the interface of PRE9.4 with other CPCI's in the program



### 3.3.1 Inputs/Outputs

The following table depicts the inputs and outputs of this CPCI. A detail description for each item can be found in the DS for this CPCI.

Function: PRE9.4

<u>INPUT</u>	<u>OUTPUT</u>
Database Identification Number	Source Code File Name
Database Name	Function Status
Library Name	
Target Host	
Current host	
Request Processor Name	
Current Subtransaction	
Internal Schema Action List	
Internal Schema Qualify List	
Conceptual Schema Action List	
Conceptual Schema Qualify List	
Result Field Table	
Set Table	
Generic CODASYL Command Table	
Record Key Table	
Application Process Information Table	
ORACLE Logon Data Area	
Error File Name	

### 3.4 Program Interrupts

Not applicable to this CPCI.

### 3.5 Timing and Sequencing Description

This CPCI is called upon by the Request Processor Control Module, CDP13, for every TOTAL subtransaction identified by the current NDML request being precompiled.

### 3.6 Special Control Features

Not applicable to this CPCI.

### **3.7 Storage Allocation**

#### **3.7.1 Database Definition**

The database used by this CPCI is the Common Data Model (CDM) database. This model is defined by the CDM1, the IDEF-1 model of the CDM, Reference Document Number 3. The database was constructed using ORACLE.

##### **3.7.1.1 File Description**

No permanent files have been defined for this CPCI. It may use temporary scratch files for the generated program source code.

##### **3.7.1.2 Table Description**

All tables used by this CPCI have been defined by the Development Specification for this CPCI.

##### **3.7.1.3 Item Description**

Not applicable to this CPCI.

### **3.8 Object Code Creation**

The object code for this CPCI will be created by the system integration test team by using defined IISS Software Configuration Management procedures. This CPCI will use the COBOL language compiler.

### **3.9 Adaptation Data**

This CPCI has been coded using ANSI COBOL and FORTRAN. The intent was to provide a transportable system. Any system environment supporting these languages, a virtual memory management scheme, the COMM and NTM subsystems of IISS and the ORACLE Database Management System should be able to support this CPCI. Every possible attempt has been to localize and identify any machine or environment dependent modules through the original design of the IISS and application of Configuration Management Procedures.

### **3.10 Detail Design Description**

The following sections have been computer generated for this CPCI.

### 3.10.1 Main Program List

The following is a list of all "Main Programs" which are modules that are not called by any other module being documented here. These modules are either program entry points or, if they are hooked into another set of programs via subroutine calls, they are the points the external programs can call and therefore enter through. To differentiate between the two types of entry points, look at the individual Module Documentation (section 3.10.8) and look at Module Type for each of the Main Program modules listed. Note whether the routine is a Program, Subroutine, or Function. If it is a Program, it is truly a main program entry point. If not, then it is merely called by other programs not being documented here.

PS 620141256  
1 November 1985

**GENERATE TOTAL RP Main Program List**

**Module Name**  
-----

**Purpose**  
-----

**CDQPT**

**GENERATE REQUEST PROCESSOR FOR TOTAL DATA  
BASE**

PS 620141256  
1 November 1985

### 3.10.2 Module List

The following is a list of all the modules being documented here along with their purpose. Each module has a unique name, no matter what language it was written in.

PS 620141256  
1 November 1985

**GENERATE TOTAL RP Module List**

**Module Name**  
-----

**Purpose**  
-----

**CDQPT**

**GENERATE REQUEST PROCESSOR FOR TOTAL DATA  
BASE**

PS 620141256  
1 November 1985

### **3.10.3 External Routines List**

The following is a list of all routines or functions not documented here that are called by modules that are documented here. The first caller, in alphabetical order, is listed as well. The specification in which any module is documented may be found in the Module Documentation Index (Document Number CM 620100001). See section 3.10.6 for a list of the modules that call each of these external routines.

PS 620141256  
1 November 1985

GENERATE TOTAL RP External Routines List

Module Name -----	First User -----
CDCI	CDQPT
CDCWF	CDQPT
CDIC	CDQPT
CDIMD	CDQPT
CDMACR	CDQPT
CDMSG	CDQPT
CDPIC	CDQPT
CDPRM	CDQPT
CDQDF	CDQPT
CDQPOP	CDQPT
CDRDF	CDQPT
CDRFT	CDQPT
ERRPRO	CDQPT
GENFIL	CDQPT
OBINDN	CDQPT
OCLOSE	CDQPT
ODFINN	CDQPT
OEXEC	CDQPT
OFETCH	CDQPT
OOPEN	CDQPT
OSQL3	CDQPT
RPTERR	CDQPT

#### 3.10.4 Include File List

The following is a list of all include files called in by modules being documented here. Each include file has a unique name regardless of the language being used. The purpose of each include file is listed as well. A more complete description of each include file is given in section 3.10.9. The purpose listed is the one that is in the source code of the include file.

A purpose of "\*\*\*\* PURPOSE NOT FOUND BY STRIPPER \*\*\*\*" indicates that a purpose statement was not written into the include file itself. The most common reason for this is that the include file comes from system libraries that were not developed by the project, such as 'C' libraries that are provided with the 'C' compiler.

See section 3.10.6 for a set of lists which show all the modules which call in each of these include files.

GENERATE TOTAL RP Include File List

File Name -----	Purpose -----
APGC	GENERIC CODASYL COMMAND TABLE
APINFO	ACCESS PATH INFORMATION TABLE
APRK	TABLE OF RECORD KEYS FOR CODASYL ACCESS PATHS
COBOLOP	WORKING STORAGE VARIABLES OPERATOR TRANSLATION
CSAL	CONCEPTUAL SCHEMA ACTION LIST
CSQUAL	CONCEPTUAL SCHEMA QUALIFY LIST
ERRCDM	IISS ERROR STATUS CODES FOR CDMF MODULES
ERRPRO	PROCESS ERROR INCLUDE FILE
INSTITBL	TABLE CONTAINING ALL GENERIC CODASYL COMMANDS
ISAL	INTERNAL SCHEMA ACTION LIST
ISQUAL	INTERNAL SCHEMA QUALIFY LIST
ORCLEDA	WS DEFINITION FOR THE ORACLE LOGIN AREA
QPG02	WS FOR REQUEST PROCESSOR GENERATOR
RFTABLE	THE RESULT FIELD TABLE
SBSTLST	WS DEFINITION FOR THE SUBSTITUTION LIST TABLE
SETTAB	LIST OF SETS OWNER-MEMBER RELATIONSHIPS
STDRESP	WS DEFINITION FOR STANDARD STATUS VARIABLE

PS 620141256  
1 November 1985

**3.10.5 Where Include File Used List**

The following lists each include file from 3.10.4 and all the modules documented in this specification which include them. The purpose of each module is listed as well.

**GENERATE TOTAL RP Where-include-file-used List**

<b>Include File -----</b>	<b>Module Name -----</b>	<b>Module Purpose -----</b>
<b>APGC</b>	<b>CDQPT</b>	<b>GENERATE REQUEST PROCESSOR FOR TOTAL DATA BASE</b>
<b>APINFO</b>	<b>CDQPT</b>	<b>GENERATE REQUEST PROCESSOR FOR TOTAL DATA BASE</b>
<b>APRK</b>	<b>CDQPT</b>	<b>GENERATE REQUEST PROCESSOR FOR TOTAL DATA BASE</b>
<b>COBOLOP</b>	<b>CDQPT</b>	<b>GENERATE REQUEST PROCESSOR FOR TOTAL DATA BASE</b>
<b>CSAL</b>	<b>CDQPT</b>	<b>GENERATE REQUEST PROCESSOR FOR TOTAL DATA BASE</b>
<b>CSQUAL</b>	<b>CDQPT</b>	<b>GENERATE REQUEST PROCESSOR FOR TOTAL DATA BASE</b>

PS 620141256  
1 November 1985

**GENERATE TOTAL RP Where-include-file-used List**

<b>Include File</b>	<b>Module Name</b>	<b>Module Purpose</b>
-----	-----	-----
<b>ERRCDM</b>	<b>CDQPT</b>	<b>GENERATE REQUEST PROCESSOR FOR TOTAL DATA BASE</b>
<b>ERRPRO</b>	<b>CDQPT</b>	<b>GENERATE REQUEST PROCESSOR FOR TOTAL DATA BASE</b>
<b>INSTTBL</b>	<b>CDQPT</b>	<b>GENERATE REQUEST PROCESSOR FOR TOTAL DATA BASE</b>
<b>ISAL</b>	<b>CDQPT</b>	<b>GENERATE REQUEST PROCESSOR FOR TOTAL DATA BASE</b>
<b>ISQUAL</b>	<b>CDQPT</b>	<b>GENERATE REQUEST PROCESSOR FOR TOTAL DATA BASE</b>
<b>ORCLEDA</b>		

**GENERATE TOTAL RP Where-include-file-used List**

<b>Include File</b> -----	<b>Module Name</b> -----	<b>Module Purpose</b> -----
	CDQPT	GENERATE REQUEST PROCESSOR FOR TOTAL DATA BASE
QPG02	CDQPT	GENERATE REQUEST PROCESSOR FOR TOTAL DATA BASE
RFTABLE	CDQPT	GENERATE REQUEST PROCESSOR FOR TOTAL DATA BASE
SBSTLST	CDQPT	GENERATE REQUEST PROCESSOR FOR TOTAL DATA BASE
SETTAB	CDQPT	GENERATE REQUEST PROCESSOR FOR TOTAL DATA BASE
STDRESP	CDQPT	GENERATE REQUEST PROCESSOR FOR TOTAL DATA BASE

PS 620141256  
1 November 1985

GENERATE TOTAL RP Where-include-file-used List

Include File -----	Module Name -----	Module Purpose -----
--------------------------	-------------------------	----------------------------

PS 620141256  
1 November 1985

### 3.10.6 Where External Routine Used List

The following lists each external function or routine listed in 3.10.3 and all the documented modules which call it. The purpose of each module is listed as well.

**GENERATE TOTAL RP Where-external-routine-used List**

<b>System Module -----</b>	<b>Module Name -----</b>	<b>Module Purpose -----</b>
<b>CDCI</b>	<b>CDQPT</b>	<b>GENERATE REQUEST PROCESSOR FOR TOTAL DATA BASE</b>
<b>CDCWF</b>	<b>CDQPT</b>	<b>GENERATE REQUEST PROCESSOR FOR TOTAL DATA BASE</b>
<b>CDIC</b>	<b>CDQPT</b>	<b>GENERATE REQUEST PROCESSOR FOR TOTAL DATA BASE</b>
<b>CDIMD</b>	<b>CDQPT</b>	<b>GENERATE REQUEST PROCESSOR FOR TOTAL DATA BASE</b>
<b>CDMACR</b>	<b>CDQPT</b>	<b>GENERATE REQUEST PROCESSOR FOR TOTAL DATA BASE</b>
<b>CDMSG</b>	<b>CDQPT</b>	<b>GENERATE REQUEST PROCESSOR FOR TOTAL DATA BASE</b>
<b>CDPIC</b>	<b>CDQPT</b>	<b>GENERATE REQUEST PROCESSOR FOR TOTAL DATA BASE</b>

PS 620141256  
1 November 1985

GENERATE TOTAL RP Where-external-routine-used List

System Module -----	Module Name -----	Module Purpose -----
CDPRM	CDQPT	GENERATE REQUEST PROCESSOR FOR TOTAL DATA BASE
CDQDF	CDQPT	GENERATE REQUEST PROCESSOR FOR TOTAL DATA BASE
CDQPOP	CDQPT	GENERATE REQUEST PROCESSOR FOR TOTAL DATA BASE
CDRDF	CDQPT	GENERATE REQUEST PROCESSOR FOR TOTAL DATA BASE
CDRFT	CDQPT	GENERATE REQUEST PROCESSOR FOR TOTAL DATA BASE
ERRPRO	CDQPT	GENERATE REQUEST PROCESSOR FOR TOTAL DATA BASE
GENFIL		

**GENERATE TOTAL RP Where-external-routine-used List**

<b>System Module</b> -----	<b>Module Name</b> -----	<b>Module Purpose</b> -----
	<b>CDQPT</b>	<b>GENERATE REQUEST PROCESSOR FOR TOTAL DATA BASE</b>
<b>OBINDN</b>	<b>CDQPT</b>	<b>GENERATE REQUEST PROCESSOR FOR TOTAL DATA BASE</b>
<b>OCLOSE</b>	<b>CDQPT</b>	<b>GENERATE REQUEST PROCESSOR FOR TOTAL DATA BASE</b>
<b>ODFINN</b>	<b>CDQPT</b>	<b>GENERATE REQUEST PROCESSOR FOR TOTAL DATA BASE</b>
<b>OEXEC</b>	<b>CDQPT</b>	<b>GENERATE REQUEST PROCESSOR FOR TOTAL DATA BASE</b>
<b>OFETCH</b>	<b>CDQPT</b>	<b>GENERATE REQUEST PROCESSOR FOR TOTAL DATA BASE</b>
<b>OOPEN</b>	<b>CDQPT</b>	<b>GENERATE REQUEST PROCESSOR FOR TOTAL DATA BASE</b>

PS 620141256  
1 November 1985

**GENERATE TOTAL RP Where-external-routine-used List**

<b>System Module</b> -----	<b>Module Name</b> -----	<b>Module Purpose</b> -----
<b>OSQL3</b>	<b>CDQPT</b>	<b>GENERATE REQUEST PROCESSOR FOR TOTAL DATA BASE</b>
<b>RPTERR</b>	<b>CDQPT</b>	<b>GENERATE REQUEST PROCESSOR FOR TOTAL DATA BASE</b>

### 3.10.7 Main Program Parts List

The following lists each Main Program listed in 3.10.1 and all the modules which are called either by that module itself or by any of the documented modules which it calls. It is possible for a non-main module to be listed more than once if it is called by multiple modules. The called modules, in this case known as program parts, are marked as to whether they are documented here. If so, the phrase "well-defined module" appears by the module name, if not it is an "external routine". The Purpose of the Main Program module is listed as well.

PS 620141256  
1 November 1985

GENERATE TOTAL RP Main Program Parts List

Main Pgm Name -----	Module Name -----	Module Type -----
CDQPT		Purpose--> GENERATE REQUEST PROCESSOR FOR TOTAL DATA BASE
	CDCI	External routine
	CDCWF	External routine
	CDIC	External routine
	CDIMD	External routine
	CDMACR	External routine
	CDMSG	External routine
	CDPIC	External routine
	CDPRM	External routine
	CDQDF	External routine
	CDQPOP	External routine
	CDRDF	External routine
	CDRFT	External routine
	ERRPRO	External routine
	GENFIL	External routine
	OBINDN	External routine
	OCLOSE	External routine
	ODFINN	External routine
	OEXEC	External routine
	OFETCH	External routine
	OOPEN	External routine
	OSQL3	External routine
	RPTERR	External routine

### 3.10.8 Module Documentation

The following documentation describes information which is specific to each individual module being documented in this specification as listed in section 3.10.2. It provides a compact way of getting information that would be otherwise buried within each module's source code.

The specific items in this module documentation have the following meanings:

**NAME:** Name of program Module.

**PURPOSE:** Purpose of Module as detailed in the source code.

**LANGUAGE:** Programming language source code is written in.  
The choices are:  
VAX-11 FORTRAN  
C (I/S-1 Workbench 'C')  
VAX-11 COBOL

**MODULE TYPE:** Whether a Program, Subroutine, or Function.

**SOURCE FILE:** Name of Source File from file specification.

**SOURCE FILE TYPE:** Source File Extension from file specification.

**HOST:** Whether this is a host-dependent routine (VAX or IBM) or blank if host-independent.

**SUBSYSTEM:** IISS sub-system this file resides in.

**SUBDIRECTORY:** Sub-directory of that subsystem in which this file resides.

**DOCUMENTATION GROUP:** Name of documentation group of which this source file is a member.

**DESCRIPTION:** A description of the module as obtained

from the source code.

- ARGUMENTS:** The arguments with which this routine is called if it is a Subroutine or a Function.
- INCLUDE FILES:** A list of all the files that are included into this module as well as their purposes.
- ROUTINES CALLED:** Subroutines or Functions, either documented or external, called by this module, if any.
- CALLED DIRECTLY BY:** The documented routines which call this module, if any.
- USED IN MAIN PROGRAM(S):** The documented Main Programs which contain this module in their parts list according to the list in section 3.10.7.

The Module Documentation is arranged alphabetically according to Module Name.

PS 620141256  
1 November 1985

**GENERATE TOTAL RP Module Documentation**

**NAME:** CDQPT  
**PURPOSE:** GENERATE REQUEST PROCESSOR FOR TOTAL DATA  
BASE  
**LANGUAGE:** VAX-11 COBOL  
**MODULE TYPE:** SUBROUTINE  
**SOURCE FILE:** CDQPT  
**SOURCE FILE TYPE:** .COB  
**HOST:**  
**SUBSYSTEM:** CDM  
**SUBDIRECTORY:**  
**DOCUMENTATION GROUP:** PS41256

**DESCRIPTION:**

-----  
- THIS PROGRAM IS A COMPILE-TIME MODULE WHOSE PURPOSE IS TO GENERATE THE COBOL SOURCE CODE NECESSARY TO SATISFY AN NDML SUBTRANSACTION REQUEST AGAINST A TOTAL DATABASE. THE TOTAL QP EXTRACTS DATA THROUGH LINKPATHS USING TOTAL AS THE DBMS AND IBM AS THE HOST COMPUTER, AND THEN REFORMATS THE DATA INTO A SEQUENTIAL FILE.

NOTE: JANUARY 6, 1985 CHANGES. ALL "MOVES" TO LIBRARY-NAME HAVE BEEN REMOVED AND THE ITEM WILL BE A PARAMTER PASSED FROM CDP13 WHEN THIS ROUTINE IS CALLED.

**ARGUMENTS:**

-----  
QPGT-DBID = DSPLY [9(5)]  
QPGT-DBMOD-NAME = DSPLY [X(6)]  
LIBRARY-NAME = DSPLY [X(30)]  
HOST = DSPLY [X(3)]  
MY-HOST = DSPLY [X(3)]  
QPGT-QP-NAME = DSPLY [X(10)]  
QPGT-SUBTRANS-ID = DSPLY [999]  
IS-ACTION-LIST = RECRD  
IS-QUALIFY-LIST = RECRD  
CS-ACTION-LIST = RECRD  
CS-QUALIFY-LIST = RECRD  
RFT = RECRD

SET-TABLE = RECRD  
GC-TABLE = RECRD  
RECORD-KEY-TABLE = RECRD  
AP-INFO-TABLE = RECRD  
ORACLE-LDA = RECRD  
ERRO-FILE = DSPLY [X(30)]  
GEN-FILE-NAME = DSPLY [X(30)]  
RETURN-STATUS = DSPLY [X(5)]

INCLUDE FILES:

-----  
QPGO2 - WS FOR REQUEST PROCESSOR GENERATOR  
ERRCDM - IISS ERROR STATUS CODES FOR CDMF MODULES  
INSTTEL - TABLE CONTAINING ALL GENERIC CODASYL COMMANDS  
SBSTLST - WS DEFINITION FOR THE SUBSTITUTION LIST TABLE  
STDRESP - WS DEFINITION FOR STANDARD STATUS VARIABLE  
COBOLOP - WORKING STORAGE VARIABLES OPERATOR TRANSLATION  
ISAL - INTERNAL SCHEMA ACTION LIST  
ISQUAL - INTERNAL SCHEMA QUALIFY LIST  
RFTABLE - THE RESULT FIELD TABLE  
CSAL - CONCEPTUAL SCHEMA ACTION LIST  
CSQUAL - CONCEPTUAL SCHEMA QUALIFY LIST  
SETTAB - LIST OF SETS OWNER-MEMBER RELATIONSHIPS  
APGC - GENERIC CODASYL COMMAND TABLE  
APINFO - ACCESS PATH INFORMATION TABLE  
APRK - TABLE OF RECORD KEYS FOR CODASYL ACCESS PATHS  
ORCLEDA - WS DEFINITION FOR THE ORACLE LOGIN AREA  
ERRPRO - PROCESS ERROR INCLUDE FILE

ROUTINES CALLED:

-----  
GENFIL  
OOPEN  
OSQL3  
ODFINN  
OBINDN  
OEXEC  
OFETCH  
OCLOSE  
CDRFT  
CDPRM  
CDRDF  
CDQDF  
CDPIC  
CDIMD

PS 620141256  
1 November 1985

CDMSG  
CDCI  
CDIC  
CDQPOP  
CDCVF  
CDNACR  
RPTERR  
ERRPRO

PS 620141256  
1 November 1985

**3.10.9 Include File Descriptions**

The following list contains a purpose and description of each include file listed in 3.10.4 as specified in the source code. The language it is written in is also given.

PS 620141256  
1 November 1985

**GENERATE TOTAL RP Include File Description**

**FILE NAME: APGC**  
**PURPOSE: GENERIC CODASYL COMMAND TABLE**  
**LANGUAGE: VAX-11 COBOL**

**DESCRIPTION:**  
-----

**HOLDS THE GENERIC CODASYL DML COMMANDS FOR AN  
ACCESS PATH OF A NDML REQUEST**

PS 620141256  
1 November 1985

**GENERATE TOTAL RP Include File Description**

**FILE NAME: APINFO**  
**PURPOSE: ACCESS PATH INFORMATION TABLE**  
**LANGUAGE: VAX-11 COBOL**

**DESCRIPTION:**  
-----

**THIS IS A COLLECTION OF INFORMATION STORED IN A  
NUMBER OF VARIOUS TABLES USED BY THE ACCESS PATH TABLE  
AND THE GENERIC CODASYL TABLE. SEE CDMP SPEC. PREG**

**APINFO.INC**

PS 620141256  
1 November 1985

**GENERATE TOTAL RP Include File Description**

**FILE NAME: APRK**  
**PURPOSE: TABLE OF RECORD KEYS FOR CODASYL ACCESS PATHS**  
**LANGUAGE: VAX-11 COBOL**

**DESCRIPTION:**  
-----

**CONTAINS INFORMATION FOR THE KEYS OF  
RECORDS CONTAINED IN THE CURRENT ACCESS  
PATH**

PS 620141256  
1 November 1985

**GENERATE TOTAL RP Include File Description**

**FILE NAME: COBOLOP**  
**PURPOSE: WORKING STORAGE VARIABLES OPERATOR TRANSLATION**  
**LANGUAGE: VAX-11 COBOL**

**DESCRIPTION:**  
-----

PS 620141256  
1 November 1985

GENERATE TOTAL RP Include File Description

FILE NAME: CSAL  
PURPOSE: CONCEPTUAL SCHEMA ACTION LIST  
LANGUAGE: VAX-11 COBOL

DESCRIPTION:  
-----

TABLE TO HOLD CONCEPTUAL DATA ABOUT THE REQUEST

\*\*\*\*\* THE CONCEPTUAL SCHEMA ACTION LIST

PS 620141256  
1 November 1985

**GENERATE TOTAL RP Include File Description**

**FILE NAME: CSQUAL**  
**PURPOSE: CONCEPTUAL SCHEMA QUALIFY LIST**  
**LANGUAGE: VAX-11 COBOL**

**DESCRIPTION:**  
-----

**CONTAINS CONCEPTUAL SCHEMA INFORMATION FOR  
THE REQUESTS QUALIFICATION**

**THE CONCEPTUAL SCHEMA QUALIFY LIST**

PS 620141256  
1 November 1985

**GENERATE TOTAL RP Include File Description**

**FILE NAME: ERRCDM**  
**PURPOSE: IISS ERROR STATUS CODES FOR CDMP MODULES**  
**LANGUAGE: VAX-11 COBOL**

**DESCRIPTION:**

-----  
CONTAINS ALL ERROR CODES USED BY CDMP \*  
MODULES FOR ERROR HANDLING \*

PS 620141256  
1 November 1985

**GENERATE TOTAL RP Include File Description**

**FILE NAME: ERRPRO**  
**PURPOSE: PROCESS ERROR INCLUDE FILE**  
**LANGUAGE: VAX-11 COBOL**

**DESCRIPTION:**  
-----

PS 620141256  
1 November 1985

**GENERATE TOTAL RP Include File Description**

**FILE NAME: INSTTBL**  
**PURPOSE: TABLE CONTAINING ALL GENERIC CODASYL COMMANDS**  
**LANGUAGE: VAX-11 COBOL**

**DESCRIPTION:**  
-----

**DECODE FOR THE GENERIC CODASYL COMMANDS**

PS 620141256  
1 November 1985

GENERATE TOTAL RP Include File Description

FILE NAME: ISAL  
PURPOSE: INTERNAL SCHEMA ACTION LIST  
LANGUAGE: VAX-11 COBOL

DESCRIPTION:  
-----

CONTAINS INTERNAL SCHEMA INFORMATION ABOUT AN  
NDML REQUEST

THE INTERNAL SCHEMA ACTION LIST

PS 620141256  
1 November 1985

**GENERATE TOTAL RP Include File Description**

**FILE NAME: ISQUAL**  
**PURPOSE: INTERNAL SCHEMA QUALIFY LIST**  
**LANGUAGE: VAX-11 COBOL**

**DESCRIPTION:**  
-----

**CONTAINS INTERNAL SCHEMA INFORMATION FOR AN  
NDML QULIFICATION**

**THE INTERNAL SCHEMA QUALIFY LIST**

PS 620141256  
1 November 1985

**GENERATE TOTAL RP Include File Description**

**FILE NAME: ORCLEDA**  
**PURPOSE: WS DEFINITION FOR THE ORACLE LOGIN AREA**  
**LANGUAGE: VAX-11 COBOL**

**DESCRIPTION:**

-----

**THE ORACLE LOGON DATA AREA**

PS 620141256  
1 November 1985

**GENERATE TOTAL RP Include File Description**

**FILE NAME: QPG02**  
**PURPOSE: WS FOR REQUEST PROCESSOR GENERATOR**  
**LANGUAGE: VAX-11 COBOL**

**DESCRIPTION:**  
-----

PS 620141256  
1 November 1985

**GENERATE TOTAL RP Include File Description**

**FILE NAME: RFTABLE**  
**PURPOSE: THE RESULT FIELD TABLE**  
**LANGUAGE: VAX-11 COBOL**

**DESCRIPTION:**  
-----

**CONTAINS CONCEPTUAL SCHEMA INFORMATION ABOUT  
THE RESULTS OF AN NDML REQUEST**

PS 620141256  
1 November 1985

**GENERATE TOTAL RP Include File Description**

**FILE NAME: SBSTLST**  
**PURPOSE: WS DEFINITION FOR THE SUBSTITUTION LIST TABLE**  
**LANGUAGE: VAX-11 COBOL**

**DESCRIPTION:**  
-----

**SUBSTITUTION-LIST REPRESENTS THE INPUT TABLE  
OF SUBSTITUTION PARAMETERS FOR THE CDMACR  
MACRO EXPANSION SUBROUTINE**

PS 620141256  
1 November 1985

GENERATE TOTAL RP Include File Description

FILE NAME: SETTAB  
PURPOSE: LIST OF SETS OWNER-MEMBER RELATIONSHIPS  
LANGUAGE: VAX-11 COBOL

DESCRIPTION:  
-----

SET TABLE TO KEEP TRACK OF CODASYL NDML REQUESTS  
IN TERMS OF OWNER AND MEMBER RELATIONSHIPS

PS 620141256  
1 November 1985

**GENERATE TOTAL RP Include File Description**

**FILE NAME** STDRESP  
**PURPOSE:** WS DEFINITION FOR STANDARD STATUS VARIABLE  
**LANGUAGE:** VAX-11 COBOL

**DESCRIPTION:**  
-----

**THE STANDARD 'PROCESS COMPLETE' MESSAGE**

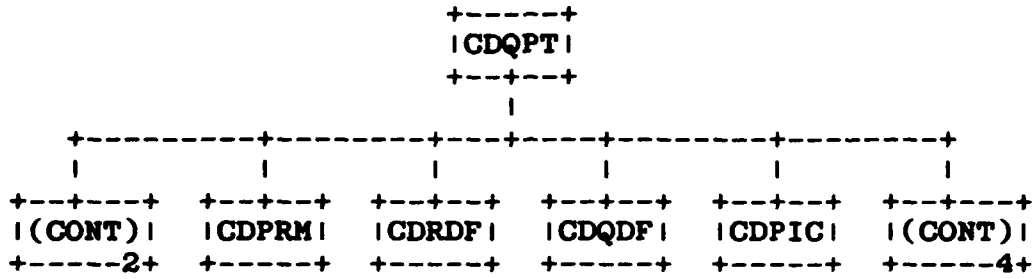
### 3.10.10 Hierarchy Chart

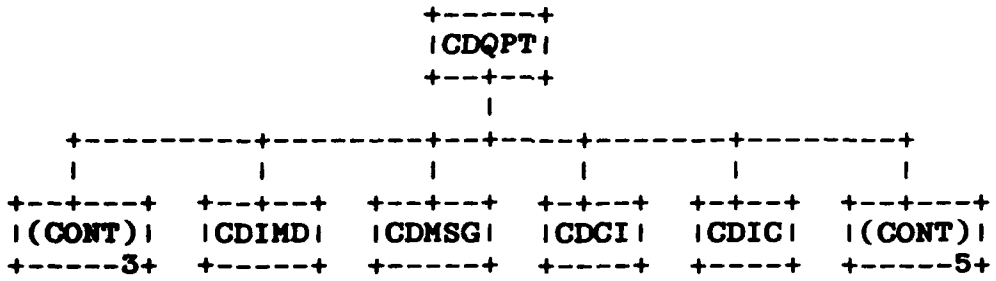
The following hierarchy charts show the relationships between all of the modules mentioned in the above documentation. A module may call a subroutine several times within its code, but the call will only be shown once as a single relationship on this hierarchy chart. All modules shown at the top of the first page are considered Main Programs as described in section 3.10.1 above.

There is an internal paging scheme as marked by the numbers in the upper right corner of each page. An index after the last page of the chart shows where a routine and its calls are first defined. If a routine has no page reference, it either makes no calls or is an external routine. A continuation box on the end of a tree limb shows where that the tree continues on the page numbered mentioned. A number in a box with a routine name points to the page where the routine is further defined within the hierarchy tree. If there is no number in a box, the routine either makes no calls or is an external routine.

```
      +-----+  
      |CDQPT|  
      +-----+  
      |  
+-----+-----+-----+-----+-----+  
|         |         |         |         |         |  
+-----+ +-----+ +-----+ +-----+ +-----+ +-----+  
|GENFIL| |OOPEN| |OSQL3| |ODFINN| |OBINDN| |(CONT)|  
+-----+ +-----+ +-----+ +-----+ +-----+ +-----+  
                                         -2+
```

```
      +-----+  
      |CDQPT|  
      +-----+  
      |  
+-----+-----+-----+-----+-----+-----+  
|         |         |         |         |         |         |  
+-----+ +-----+ +-----+ +-----+ +-----+ +-----+  
|(CONT)| |OEXEC| |OFETCH| |OCLOSE| |CDRFT| |(CONT)|  
+-----1+ +-----+ +-----+ +-----+ +-----+ +-----3+
```





+-----+					
CDQPT					
+---+---+					
+-----+					
+---+---+	+---+---+	+---+---+	+---+---+	+---+---+	+---+---+
(CONT)	CDQPOP	CDCWF	CDMACR	RPTERR	ERRPRO
+---+---+	+---+---+	+---+---+	+---+---+	+---+---+	+---+---+
4					

PS 620141256  
1 November 1985

CDCI  
CDCWF  
CDIC  
CDIND  
CDMACR  
CDMSG  
CDPIC  
CDPRM  
CDQDF  
CDQPOP  
CDQPT.....1  
CDRDF  
CDRFT  
ERRPRO  
GENFIL  
OBINDN  
OCLOSE  
ODFINN  
OEXEC  
OFETCH  
OOPEN  
OSQL3  
RPTERR

PS 620141256  
1 November 1985

**3.11 Program Listings Comments**

This information is contained in the Module Descriptions in section 3.10.

## SECTION 4

### QUALITY ASSURANCE PROVISIONS

#### 4.1 Introduction and Definitions

"Testing" is a systematic process that may be preplanned and explicitly stated. Test techniques and procedures may be defined in advance, and a sequence of test steps may be specified. "Debugging" is the process of isolation and correction of the cause of an error.

"Antibugging" is defined as the philosophy of writing programs in such a way as to make bugs less likely to occur and when they do occur, to make them more noticeable to the programmer and the user. In other words, as much error checking as is practical and possible in each routine should be performed.

#### 4.2 Computer Programming Test and Evaluation

The quality assurance provisions for test consists of the normal testing techniques that are accomplished during the construction process. They consist of design and code walk-throughs, unit testing, and integration testing. These tests are performed by the design team. Structured design, design walk-through and the incorporation of "antibugging" facilitate this testing by exposing and addressing problem areas before they become coded "bugs."

ENO

7-87

Ditic