

AD-A182 825

SELECTED MEDICAL CARE STATISTICS QUARTER ENDING MARCH
31 1987 (U) WASHINGTON HEADQUARTERS SERVICES (DOD) DC
DIRECTORATE FOR INFORMATION OPERATIONS AND REPORTS
31 MAR 87 DIOR/L02-87/02

1/1

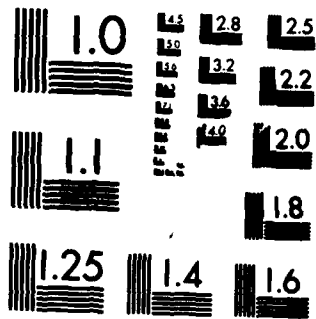
UNCLASSIFIED

F/G 6/3

NL

6

END
PAGE
1/1



MICROCOPY RESOLUTION TEST CHART
NATIONAL BUREAU OF STANDARDS-1963-A



OSD

AD-A182 825

11

L02

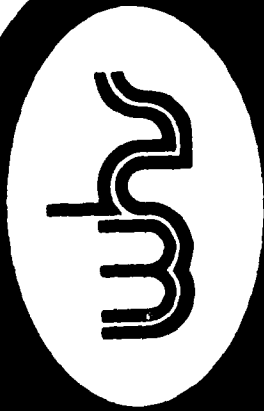
Department of Defense
SELECTED MEDICAL CARE STATISTICS

Quarter Ending March 31, 1987



DTIC
ELECTE
JUL 17 1987
S & D

DISTRIBUTION STATEMENT A
Approved for public release
Distribution Unlimited



DIRECTORATE FOR INFORMATION
OPERATIONS AND REPORTS (DIOR)

DEFENSE SUPPORT SERVICES

Department of Defense Selected Medical Care Statistics

Quarter Ending March 31, 1987

*Washington Headquarters Services
Directorate for Information
Operations and Reports*

~~FOR SALE BY THE SUPERINTENDENT OF DOCUMENTS
U.S. GOVERNMENT PRINTING OFFICE
WASHINGTON, DC 20402~~

Accession For	
NTIS CRA&I	<input checked="" type="checkbox"/>
DTIC TAB	<input type="checkbox"/>
Unannounced Justification	<input type="checkbox"/>
By	
Distribution/	
Availability Codes	
Dist	A-1
Availability Codes	Available for Special



DTIC and NTIS identification number for this publication is DIOR/LO2-87/02.

FOREWORD

Selected Medical Care Statistics (SMCS) is a quarterly publication prepared by the Washington Headquarters Services, Directorate for Information Operations and Reports (WHS/DIOR) of the Office of the Secretary of Defense.

SMCS presents quarterly summary data concerning medical care provided at fixed military medical facilities located in (1) the United States and (2) outside the United States, in territories, possessions and foreign countries. This publication contains pie charts which are based on the percent of the worldwide DoD total for each of the categories. Admissions and beds occupied by dependents of other uniformed personnel (PHS, CG, NOAA) are less than one percent and are included in the other category. *(Keywords: Statistical data; tables; data; admissions; independent visits)*

This publication is generated from a computerized data base developed and maintained in consonance with Department of Defense Instruction (DoDI) 6015.14, November 14, 1977, under Reports Control Symbol DD-COMP(Q)1474 by the Manpower Management Information Division of WHS/DIOR.

John Smith

TABLE OF CONTENTS

TABLE NUMBER		PAGE
Table 1.1	Operating Beds/Operating Bassinets/Beds Occupied - Worldwide.....	1
Figure 1.1	Beds Occupied - Percent of DoD Total Worldwide.....	2
Table 1.2	Operating Beds/Operating Bassinets/Beds Occupied - United States.....	3
Table 1.3	Operating Beds/Operating Bassinets/Beds Occupied - Outside United States.....	4
Table 2.1	Admissions - Worldwide.....	5
Figure 2.1	Admissions - Percent of DoD Total Worldwide.....	6
Table 2.2	Admissions - United States.....	7
Table 2.3	Admissions - Outside United States.....	8
Table 3.1	Outpatient Visits and Live Births - Worldwide.....	9
Figure 3.1	Outpatient Visits - Percent of Worldwide Total.....	10
Table 3.2	Outpatient Visits and Live Births - United States.....	11
Table 3.3	Outpatient Visits and Live Births - Outside United States.....	12
	GLOSSARY.....	14

TABLE 1.1
DEPARTMENT OF DEFENSE
SELECTED DATA CONCERNING MEDICAL CARE
PROVIDED AT FIXED MILITARY FACILITIES
FOR QUARTER ENDING
MARCH 1987

OPERATING BEDS - WORLDWIDE		DOD TOTAL	ARMY FACILITIES	NAVY FACILITIES	AIR FORCE FACILITIES
1.	NUMBER OF OPERATING BEDS - TOTAL	17,536	7,923	4,157	5,456
2.	NUMBER OF OPERATING BASSINETS - TOTAL	1,947	608	232	1,107
3.	NUMBER OF BEDS OCCUPIED (DAILY AVERAGE) - TOTAL	13,950	6,783	2,756	4,411
4.	BEDS OCCUPIED BY US ACTIVE DUTY UNIFORMED PERSONNEL - TOTAL	5,495	2,610	1,489	1,386
	A. MILITARY - TOTAL	5,440	2,597	1,470	1,373
	(1) ARMY	2,440	2,253	52	135
	(2) NAVY-MARINE CORPS	1,663	1,663	1,373	127
	(3) AIR FORCE	1,337	181	45	1,111
	B. OTHER UNIFORMED PERSONNEL (PHS,CG,NOAA) - TOTAL	55	13	29	13
5.	BEDS OCCUPIED BY RETIRED US UNIFORMED PERSONNEL - TOTAL	2,235	1,117	326	792
	A. RETIRED MILITARY - TOTAL	2,215	1,110	319	786
	(1) ARMY	965	751	53	161
	(2) NAVY-MARINE CORPS	454	118	220	116
	(3) AIR FORCE	796	241	46	509
	B. OTHER RETIRED UNIFORMED PERSONNEL (PHS,CG,NOAA) - TOTAL	20	7	7	6
6.	BEDS OCCUPIED BY DEPENDENTS OF US ACTIVE DUTY MILITARY PERSONNEL - TOTAL	3,764	1,776	597	1,391
	(1) ARMY	1,574	1,413	25	136
	(2) NAVY-MARINE CORPS	1,798	145	527	126
	(3) AIR FORCE	1,392	218	45	1,129
7.	BEDS OCCUPIED BY DEPENDENTS OF RETIRED AND DECEASED US MILITARY PERSONNEL - TOTAL	1,844	843	260	741
	(1) ARMY	746	554	41	151
	(2) NAVY-MARINE CORPS	396	95	187	114
	(3) AIR FORCE	702	194	32	476
8.	BEDS OCCUPIED BY DEPENDENTS OF OTHER UNIFORMED PERSONNEL (PHS,CG,NOAA) - TOTAL	44	16	11	17
9.	BEDS OCCUPIED BY ALL OTHER BENEFICIARIES - TOTAL	568	421	63	84

**BEDS OCCUPIED—PERCENT OF DOD TOTAL WORLDWIDE
QUARTER ENDING MARCH 31, 1987**

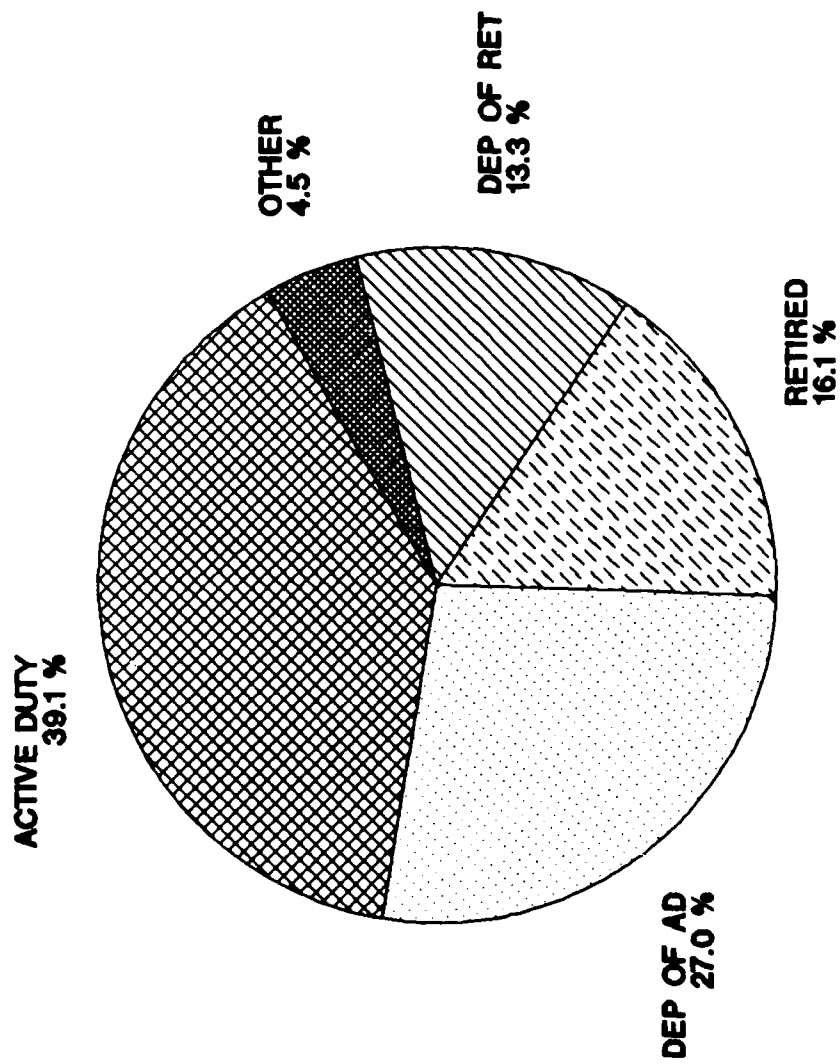


FIGURE 1.1

TABLE 1.2
DEPARTMENT OF DEFENSE
SELECTED DATA CONCERNING MEDICAL CARE
PROVIDED AT FIXED MILITARY FACILITIES
FOR QUARTER ENDING
MARCH 1987

OPERATING BEDS - UNITED STATES		DOD TOTAL	ARMY FACILITIES	NAVY FACILITIES	AIR FORCE FACILITIES
1.	NUMBER OF OPERATING BEDS - TOTAL	14,931	6,436	3,717	4,778
2.	NUMBER OF OPERATING BASSINETS - TOTAL	1,605	459	193	953
3.	NUMBER OF BEDS OCCUPIED (DAILY AVERAGE) - TOTAL	11,851	5,594	2,420	3,837
4.	BEDS OCCUPIED BY US ACTIVE DUTY UNIFORMED PERSONNEL - TOTAL	4,424	1,995	1,296	1,133
	A. MILITARY - TOTAL	4,371	1,982	1,268	1,121
	(1) ARMY	1,844	1,695	46	103
	(2) NAVY-MARINE CORPS	1,444	150	1,188	106
	(3) AIR FORCE	1,083	137	34	912
5.	BEDS OCCUPIED BY RETIRED US UNIFORMED PERSONNEL - TOTAL	53	13	28	12
	A. RETIRED MILITARY - TOTAL	2,157	1,077	316	764
	(1) ARMY	924	721	50	153
	(2) NAVY-MARINE CORPS	439	115	215	109
	(3) AIR FORCE	774	234	44	496
6.	BEDS OCCUPIED BY DEPENDENTS OF US ACTIVE DUTY MILITARY PERSONNEL - TOTAL	20	7	7	6
	B. OTHER RETIRED UNIFORMED PERSONNEL (PHS,CG,NOAA) - TOTAL	2,962	1,331	495	1,136
	(1) ARMY	1,175	1,051	19	105
	(2) NAVY-MARINE CORPS	694	136	454	104
	(3) AIR FORCE	1,093	144	22	927
7.	BEDS OCCUPIED BY DEPENDENTS OF RETIRED AND DECEASED US MILITARY PERSONNEL - TOTAL	1,795	827	247	721
	(1) ARMY	728	543	37	148
	(2) NAVY-MARINE CORPS	381	94	179	108
	(3) AIR FORCE	686	190	31	465
8.	BEDS OCCUPIED BY DEPENDENTS OF OTHER UNIFORMED PERSONNEL (PHS,CG,NOAA) - TOTAL	44	16	11	17
9.	BEDS OCCUPIED BY ALL OTHER BENEFICIARIES - TOTAL	469	348	55	66

TABLE 1.3
DEPARTMENT OF DEFENSE
SELECTED DATA CONCERNING MEDICAL CARE
PROVIDED AT FIXED MILITARY FACILITIES
FOR QUARTER ENDING
MARCH 1987

OPERATING BEDS - OUTSIDE UNITED STATES		DOD TOTAL	ARMY FACILITIES	NAVY FACILITIES	AIR FORCE FACILITIES
1.	NUMBER OF OPERATING BEDS	2,605	1,487	440	678
2.	NUMBER OF OPERATING BASSINETS	342	149	39	154
3.	NUMBER OF BEDS OCCUPIED (DAILY AVERAGE)	2,099	1,189	336	574
4.	BEDS OCCUPIED BY US ACTIVE DUTY UNIFORMED PERSONNEL	1,071	615	203	253
	A. MILITARY	1,069	615	202	252
	(1) ARMY	596	558	6	32
	(2) NAVY-MARINE CORPS	219	13	185	21
	(3) AIR FORCE	254	44	11	199
	B. OTHER UNIFORMED PERSONNEL (PHS,CG,NOAA)	2	0	1	1
5.	BEDS OCCUPIED BY RETIRED US UNIFORMED PERSONNEL	78	40	10	28
	A. RETIRED MILITARY	78	40	10	28
	(1) ARMY	41	30	3	8
	(2) NAVY-MARINE CORPS	15	3	5	7
	(3) AIR FORCE	22	7	2	13
	B. OTHER RETIRED UNIFORMED PERSONNEL (PHS,CG,NOAA)	0	0	0	0
6.	BEDS OCCUPIED BY DEPENDENTS OF US ACTIVE DUTY MILITARY PERSONNEL	802	445	102	255
	(1) ARMY	399	362	6	31
	(2) NAVY-MARINE CORPS	104	9	73	22
	(3) AIR FORCE	299	74	23	202
7.	BEDS OCCUPIED BY DEPENDENTS OF RETIRED AND DECEASED US MILITARY PERSONNEL	49	16	13	20
	(1) ARMY	18	11	4	3
	(2) NAVY-MARINE CORPS	15	1	8	6
	(3) AIR FORCE	16	4	1	11
8.	BEDS OCCUPIED BY DEPENDENTS OF OTHER UNIFORMED PERSONNEL (PHS,CG,NOAA)	0	0	0	0
9.	BEDS OCCUPIED BY ALL OTHER BENEFICIARIES	99	73	3	18

TABLE 2.1
DEPARTMENT OF DEFENSE
SELECTED DATA CONCERNING MEDICAL CARE
PROVIDED AT FIXED MILITARY FACILITIES
FOR QUARTER ENDING
MARCH 1987

	ADMISSIONS - WORLDWIDE	DOD TOTAL	ARMY FACILITIES	NAVY FACILITIES	AIR FORCE FACILITIES
10. NUMBER OF ADMISSIONS	- TOTAL	238,760	110,364	51,773	76,623
11. ADMISSIONS OF US ACTIVE DUTY UNIFORMED PERSONNEL	- TOTAL	77,493	34,670	21,719	21,104
A. MILITARY	- TOTAL	76,840	34,516	21,403	20,921
(1) ARMY		32,540	30,498	576	1,466
(2) NAVY-MARINE CORPS		23,174	1,847	20,170	1,157
(3) AIR FORCE		21,126	2,171	657	18,298
B. OTHER UNIFORMED PERSONNEL (PHS,CG,NOAA)	- TOTAL	653	154	316	183
12. ADMISSIONS OF RETIRED US UNIFORMED PERSONNEL	- TOTAL	28,176	13,781	4,986	9,409
A. ADMISSIONS OF RETIRED MILITARY	- TOTAL	27,925	13,685	4,888	9,352
(1) ARMY		12,013	9,358	816	1,839
(2) NAVY-MARINE CORPS		6,119	1,439	3,365	1,315
(3) AIR FORCE		9,793	2,888	707	6,198
B. ADMISSIONS OF OTHER RETIRED UNIFORMED PERSONNEL (PHS,CG,NOAA)	- TOTAL	251	96	98	57
13. ADMISSIONS OF DEPENDENTS OF US ACTIVE DUTY PERSONNEL (PHS,CG,NOAA)	- TOTAL	95,859	43,075	19,276	33,508
A. ARMY		39,339	35,607	760	2,972
B. NAVY-MARINE CORPS		22,989	3,133	17,288	2,568
C. AIR FORCE		33,531	4,335	1,228	27,968
14. ADMISSIONS OF DEPENDENTS OF RETIRED AND DECEASED US MILITARY PERSONNEL	- TOTAL	27,402	12,152	4,676	10,574
A. ARMY		10,904	8,193	761	1,950
B. NAVY-MARINE CORPS		6,131	1,338	3,283	1,510
C. AIR FORCE		10,367	2,621	632	7,114
15. ADMISSIONS OF DEPENDENTS OF OTHER UNIFORMED PERSONNEL (PHS,CG,NOAA)	- TOTAL	977	315	321	341
16. ADMISSIONS OF ALL OTHER BENEFICIARIES	- TOTAL	8,853	6,371	795	1,687

**ADMISSIONS—PERCENT OF DOD TOTAL WORLDWIDE
QUARTER ENDING MARCH 31, 1987**

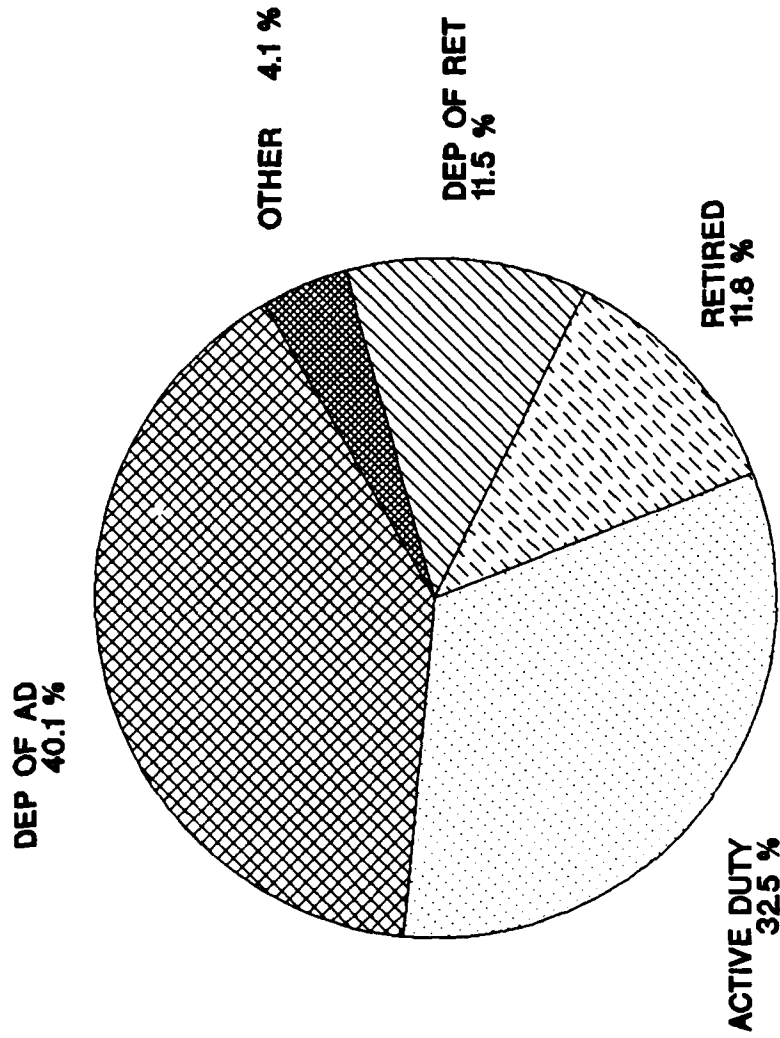


FIGURE 2.1

TABLE 2.2
DEPARTMENT OF DEFENSE
SELECTED DATA CONCERNING MEDICAL CARE
PROVIDED AT FIXED MILITARY FACILITIES
FOR QUARTER ENDING
MARCH 1987

ADMISSIONS - UNITED STATES		DOD TOTAL	ARMY FACILITIES	NAVY FACILITIES	AIR FORCE FACILITIES
10.	NUMBER OF ADMISSIONS	201,016	90,069	45,085	65,862
11.	ADMISSIONS OF US ACTIVE DUTY UNIFORMED PERSONNEL	62,288	26,569	18,824	16,895
	A. MILITARY	61,664	26,415	18,533	16,716
	(1) ARMY	24,721	23,239	495	987
	(2) NAVY-MARINE CORPS	20,139	1,670	17,592	877
	(3) AIR FORCE	16,804	1,506	17,446	14,852
	B. OTHER UNIFORMED PERSONNEL (PHS,CG,NOAA)	624	154	291	179
12.	ADMISSIONS OF RETIRED US UNIFORMED PERSONNEL	27,225	13,355	4,758	9,112
	A. ADMISSIONS OF RETIRED MILITARY	26,976	13,261	4,660	9,055
	(1) ARMY	11,530	9,032	733	1,765
	(2) NAVY-MARINE CORPS	5,904	1,413	3,248	1,243
	(3) AIR FORCE	9,542	2,816	679	6,047
	B. ADMISSIONS OF OTHER RETIRED UNIFORMED PERSONNEL (PHS,CG,NOAA)	249	94	98	57
13.	ADMISSIONS OF DEPENDENTS OF US ACTIVE DUTY PERSONNEL (PHS,CG,NOAA)	76,614	32,507	16,180	27,927
	A. ARMY	29,467	26,616	605	2,246
	B. NAVY-MARINE CORPS	20,289	2,994	14,990	2,305
	C. AIR FORCE	26,858	2,897	585	23,376
14.	ADMISSIONS OF DEPENDENTS OF RETIRED AND DECEASED US MILITARY PERSONNEL	26,719	11,909	4,464	10,346
	A. ARMY	10,633	8,029	687	1,917
	B. NAVY-MARINE CORPS	5,953	1,322	3,181	1,450
	C. AIR FORCE	10,133	2,558	596	6,979
15.	ADMISSIONS OF DEPENDENTS OF OTHER UNIFORMED PERSONNEL (PHS,CG,NOAA)	951	315	299	337
16.	ADMISSIONS OF ALL OTHER BENEFICIARIES	7,219	5,414	560	1,245

TABLE 2.3
DEPARTMENT OF DEFENSE
SELECTED DATA CONCERNING MEDICAL CARE
PROVIDED AT FIXED MILITARY FACILITIES
FOR QUARTER ENDING
MARCH 1987

	ADMISSIONS - OUTSIDE UNITED STATES	DOD TOTAL	ARMY FACILITIES	NAVY FACILITIES	AIR FORCE FACILITIES
10. NUMBER OF ADMISSIONS	- TOTAL	37,744	20,295	6,688	10,761
11. ADMISSIONS OF US ACTIVE DUTY UNIFORMED PERSONNEL	- TOTAL	15,205	8,101	2,895	4,209
A. MILITARY	- TOTAL	15,176	8,101	2,870	4,205
(1) ARMY		7,819	7,259	81	479
(2) NAVY-MARINE CORPS		3,035	177	2,578	280
(3) AIR FORCE		4,322	665	2,211	3,446
B. OTHER UNIFORMED PERSONNEL (PHS,CG,NOAA)	- TOTAL	29	0	25	4
12. ADMISSIONS OF RETIRED US UNIFORMED PERSONNEL	- TOTAL	951	426	228	297
A. ADMISSIONS OF RETIRED MILITARY		949	424	228	297
(1) ARMY		483	326	83	74
(2) NAVY-MARINE CORPS		215	26	117	72
(3) AIR FORCE		251	72	28	151
B. ADMISSIONS OF OTHER RETIRED UNIFORMED PERSONNEL (PHS,CG,NOAA)	- TOTAL	2	2	0	0
13. ADMISSIONS OF DEPENDENTS OF US ACTIVE DUTY PERSONNEL (PHS,CG,NOAA)	- TOTAL	19,245	10,568	3,086	5,581
A. ARMY		9,872	8,991	155	726
B. NAVY-MARINE CORPS		2,700	139	2,298	263
C. AIR FORCE		6,673	1,438	643	4,592
14. ADMISSIONS OF DEPENDENTS OF RETIRED AND DECEASED US MILITARY PERSONNEL	- TOTAL	683	243	212	228
A. ARMY		271	164	74	33
B. NAVY-MARINE CORPS		178	16	102	60
C. AIR FORCE		234	63	36	135
15. ADMISSIONS OF DEPENDENTS OF OTHER UNIFORMED PERSONNEL (PHS,CG,NOAA)	- TOTAL	26	0	22	4
16. ADMISSIONS OF ALL OTHER BENEFICIARIES	- TOTAL	1,634	957	235	442

TABLE 3.1
DEPARTMENT OF DEFENSE
SELECTED DATA CONCERNING MEDICAL CARE
PROVIDED AT FIXED MILITARY FACILITIES
FOR QUARTER ENDING
MARCH 1987

	OUTPATIENT VISITS - WORLDWIDE	DOD TOTAL	ARMY FACILITIES	NAVY FACILITIES	AIR FORCE FACILITIES
17.	NUMBER OF OUTPATIENT VISITS	11,959,807	5,078,161	2,731,118	4,150,528
18.	OUTPATIENT VISITS BY US ACTIVE DUTY UNIFORMED PERSONNEL	4,725,819	1,994,714	1,337,973	1,393,132
	A. MILITARY	4,693,602	1,989,294	1,315,357	1,388,951
	(1) ARMY	1,957,720	1,884,130	21,591	51,999
	(2) NAVY-MARINE CORPS	1,361,763	48,676	1,279,413	33,674
	(3) AIR FORCE	1,374,119	56,488	14,353	1,303,278
	B. OTHER UNIFORMED PERSONNEL (PHS,CG,NOAA)	32,217	5,420	22,616	4,181
19.	OUTPATIENT VISITS BY RETIRED US UNIFORMED PERSONNEL	1,065,104	481,658	167,070	416,376
20.	OUTPATIENT VISITS BY DEPENDENTS OF US ACTIVE DUTY UNIFORMED PERSONNEL	4,050,389	1,726,564	711,916	1,611,909
	A. DEPENDENTS OF MILITARY PERSONNEL	4,020,954	1,718,636	701,549	1,600,769
	(1) ARMY	1,619,704	1,498,504	27,342	93,858
	(2) NAVY-MARINE CORPS	812,733	96,083	649,612	67,038
	(3) AIR FORCE	1,588,517	124,049	24,595	1,439,873
	B. DEPENDENTS OF OTHER UNIFORMED PERSONNEL (PHS,CG,NOAA)	29,435	7,928	10,367	11,140
21.	OUTPATIENT VISITS BY DEPENDENTS OF RETIRED AND DECEASED US UNIFORMED PERSONNEL	1,329,821	542,909	187,254	599,658
22.	OUTPATIENT VISITS BY ALL OTHER BENEFICIARIES	788,674	332,316	326,905	129,453
23.	NUMBER OF LIVE BIRTHS	24,711	10,012	5,466	9,233

**OUTPATIENT VISITS—PERCENT OF WORLDWIDE TOTAL
QUARTER ENDING MARCH 31, 1987**

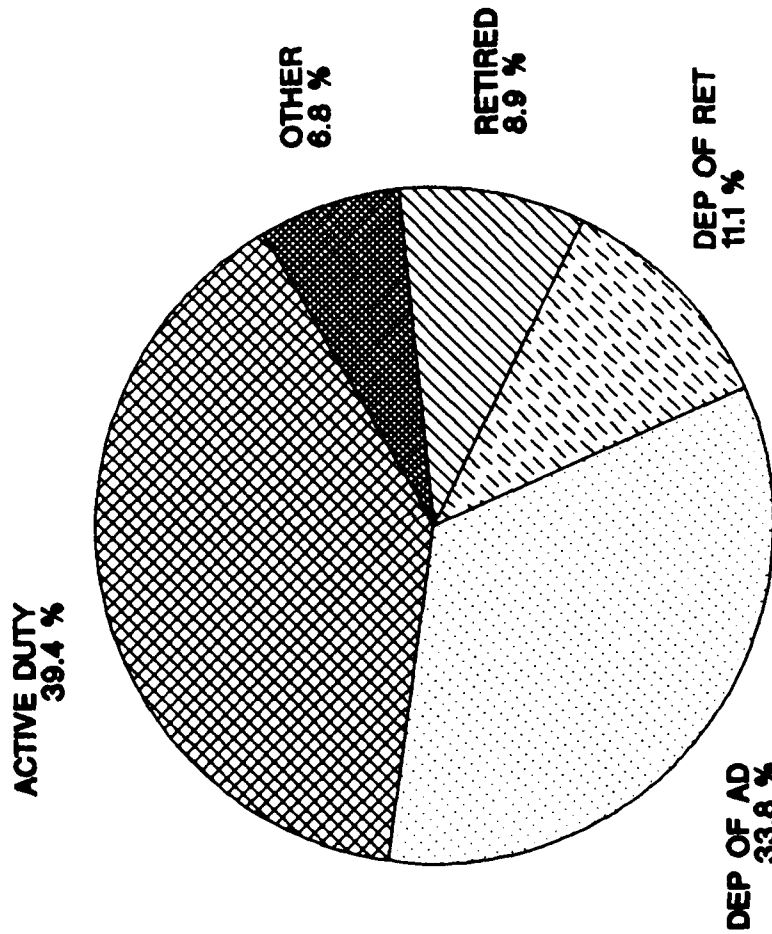


FIGURE 3.1

TABLE 3.2
DEPARTMENT OF DEFENSE
SELECTED DATA CONCERNING MEDICAL CARE
PROVIDED AT FIXED MILITARY FACILITIES
FOR QUARTER ENDING
MARCH 1987

	OUTPATIENT VISITS - UNITED STATES	DOD TOTAL	ARMY FACILITIES	NAVY FACILITIES	AIR FORCE FACILITIES
17. NUMBER OF OUTPATIENT VISITS	- TOTAL	10,036,774	4,065,542	2,461,710	3,509,522
18. OUTPATIENT VISITS BY US ACTIVE DUTY UNIFORMED PERSONNEL	- TOTAL	3,811,499	1,498,697	1,210,338	1,102,464
A. MILITARY	- TOTAL	3,780,175	1,493,289	1,188,368	1,098,518
(1) ARMY		1,459,879	1,407,726	18,697	33,456
(2) NAVY-MARINE CORPS		1,230,270	44,118	1,160,576	25,576
(3) AIR FORCE		1,090,026	41,445	9,095	1,039,486
B. OTHER UNIFORMED PERSONNEL (PHS,CG,NOAA)	- TOTAL	31,324	5,408	21,970	3,946
19. OUTPATIENT VISITS BY RETIRED US UNIFORMED PERSONNEL	- TOTAL	1,034,842	487,953	159,640	407,249
20. OUTPATIENT VISITS BY DEPENDENTS OF US ACTIVE DUTY UNIFORMED PERSONNEL	- TOTAL	3,203,422	1,283,163	615,693	1,304,566
A. DEPENDENTS OF MILITARY PERSONNEL	- TOTAL	3,175,352	1,275,245	606,047	1,294,060
(1) ARMY		1,177,796	1,086,964	22,444	68,388
(2) NAVY-MARINE CORPS		722,635	91,751	569,812	61,072
(3) AIR FORCE		1,274,921	96,530	13,791	1,164,600
B. DEPENDENTS OF OTHER UNIFORMED PERSONNEL (PHS,CG,NOAA)	- TOTAL	28,070	7,918	9,646	10,506
21. OUTPATIENT VISITS BY DEPENDENTS OF RETIRED AND DECEASED US UNIFORMED PERSONNEL	- TOTAL	1,304,005	534,237	179,120	590,648
22. OUTPATIENT VISITS BY ALL OTHER BENEFICIARIES	- TOTAL	683,006	281,492	296,919	104,595
23. NUMBER OF LIVE BIRTHS	- TOTAL	19,369	7,207	4,338	7,824

TABLE 3.3
DEPARTMENT OF DEFENSE
SELECTED DATA CONCERNING MEDICAL CARE
PROVIDED AT FIXED MILITARY FACILITIES
FOR QUARTER ENDING
MARCH 1987

	OUTPATIENT VISITS - OUTSIDE UNITED STATES	DOD TOTAL	ARMY FACILITIES	NAVY FACILITIES	AIR FORCE FACILITIES
17. NUMBER OF OUTPATIENT VISITS	- TOTAL	1,923,033	1,012,618	269,408	641,006
18. OUTPATIENT VISITS BY US ACTIVE DUTY UNIFORMED PERSONNEL	- TOTAL	914,320	486,017	127,635	290,668
A. MILITARY	- TOTAL	913,427	496,005	126,989	290,433
(1) ARMY		497,841	476,404	2,894	18,543
(2) NAVY-MARINE CORPS		131,493	4,558	118,837	8,098
(3) AIR FORCE		284,093	15,043	5,258	263,792
B. OTHER UNIFORMED PERSONNEL (PHS,CG,NOAA)	- TOTAL	893	12	646	235
19. OUTPATIENT VISITS BY RETIRED US UNIFORMED PERSONNEL	- TOTAL	30,262	13,705	7,430	9,127
20. OUTPATIENT VISITS BY DEPENDENTS OF US ACTIVE DUTY UNIFORMED PERSONNEL	- TOTAL	846,967	443,401	96,223	307,343
A. DEPENDENTS OF MILITARY PERSONNEL	- TOTAL	845,602	443,391	95,502	306,709
(1) ARMY		441,908	411,540	4,898	25,470
(2) NAVY-MARINE CORPS		90,088	4,332	79,800	5,966
(3) AIR FORCE		313,596	27,519	10,804	275,273
B. DEPENDENTS OF OTHER UNIFORMED PERSONNEL (PHS,CG,NOAA)	- TOTAL	1,365	10	721	634
21. OUTPATIENT VISITS BY DEPENDENTS OF RETIRED AND DECEASED US UNIFORMED PERSONNEL	- TOTAL	25,816	8,672	8,134	9,010
22. OUTPATIENT VISITS BY ALL OTHER BENEFICIARIES	- TOTAL	105,668	50,824	29,988	24,858
23. NUMBER OF LIVE BIRTHS	- TOTAL	5,342	2,805	1,128	1,409

GLOSSARY

Admission. An admission is the act of placing an individual under treatment or observation in a medical center or a hospital. The day of admission is the day on which the medical center or hospital makes a formal acceptance of the patient who is to be provided with room, board, and continuous nursing service in an area of the hospital where patients normally stay at least overnight. If both an admission and discharge occur on the same day, then that day is considered as a day of admission and shall be counted as one occupied bed day. The admission of a newborn is deemed to occur at time of birth.

Live Births. A live birth is the complete expulsion or extraction from its mother of a product of conception, irrespective of the duration of pregnancy which after such separation, breathes or shows any other evidence of life such as beating of the heart, pulsation of the umbilical cord, or definite movement of voluntary muscles, whether or not the umbilical cord has been cut, or the placenta is attached; each such product of such a birth is considered liveborn.

Occupied Bed. A bed assigned as of midnight to a patient, to include a patient on pass or liberty not in excess of 72 hours, and any bassinets assigned to a newborn infant whose mother has been discharged from the hospital. The definition excludes: any bed assigned to a patient subsisting out, on leave, or absent without leave, and any bed occupied by a transient patient.

Operating Bed. A bed that is currently set up and ready in all respects for the care of a patient. It must include supporting space, equipment and staff to operate under normal circumstances. Excluded are nursery bassinets and transient patients' beds.

Operating Bassinet. A bed designed for the care of an infant that is currently set up in the newborn nursery and ready in all respects for use. It must include support space, equipment and staff to operate under normal circumstances. Excluded are infant transporters.

Outpatient Visits. Visits made to each dispensary or separate, organized clinic of a fixed medical treatment facility for medical advice, examination, diagnosis, treatment, evaluation, consultation, or counseling, including visits by military patients who are excused from duty for medical reasons but who have not been admitted for inpatient care in a facility authorized beds for inpatient care and any visits made incident to complete physicals or flight physicals.

**DAT
ILM**