

AD-A103 247

CRYSTALLIZATION RELATIONSHIPS BETWEEN  
POLY(BIS(PHENOXY)PHOSPHAZENE)-(PBPP) CRYSTALS(U)  
PITTSBURGH UNIV PA SCHOOL OF ENGINEERING  
M KOJIMA ET AL. 15 JUL 87 TR-2

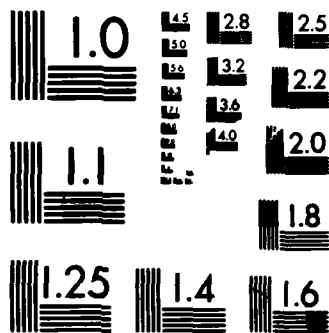
1/1

UNCLASSIFIED

F/G 7/3

ML





MICROCOPY RESOLUTION TEST CHART  
NATIONAL BUREAU OF STANDARDS-1963-A

AD-A183 247

DTIC FILE COPY

12

OFFICE OF NAVAL RESEARCH

Contract N00014-85-K-0358

Technical Report No. 2

**CRYSTALLIZATION RELATIONSHIPS BETWEEN  
POLY[BIS(PHENOXY)PHOSPHAZENE]-(PBPP) CRYSTALS**

Manuscript Prepared for Publication in Polymer (London)

by

M. Kojima and J. H. Magill  
Department of Material Science and  
Chemical/Petroleum Engineering  
University of Pittsburgh  
Pittsburgh, Pennsylvania 15261

DTIC  
SELECTED  
JUL 31 1987  
S E D

Reproduction in whole or in part is permitted for any purpose of the United States Government

This document has been approved for public release and sale: its distribution is unlimited

DA 7 29 043

## REPORT DOCUMENTATION PAGE

1a. REPORT SECURITY CLASSIFICATION <b>NONE</b>		1b. RESTRICTIVE MARKINGS <b>NONE</b>		
2a. SECURITY CLASSIFICATION AUTHORITY <b>NONE</b>		3. DISTRIBUTION / AVAILABILITY OF REPORT  <b>Unlimited</b>		
2b. DECLASSIFICATION / DOWNGRADING SCHEDULE <b>NONE</b>				
4. PERFORMING ORGANIZATION REPORT NUMBER(S) <b>ONR # 2</b>		5. MONITORING ORGANIZATION REPORT NUMBER(S) <b>ONR N00014-85-K-0358</b>		
6a. NAME OF PERFORMING ORGANIZATION <b>University of Pittsburgh</b>	6b. OFFICE SYMBOL (if applicable)	7a. NAME OF MONITORING ORGANIZATION <b>Office of Naval Research</b>		
6c. ADDRESS (City, State, and ZIP Code) <b>848 Benedum Engineering Hall School of Engineering Univ. of Pittsburgh, Pgh, PA 15261</b>		7b. ADDRESS (City, State, and ZIP Code) <b>800 North Quincy Avenue Arlington, VA 22217</b>		
8a. NAME OF FUNDING / SPONSORING ORGANIZATION <b>Office of Naval Research</b>	8b. OFFICE SYMBOL (if applicable)	9. PROCUREMENT INSTRUMENT IDENTIFICATION NUMBER		
8c. ADDRESS (City, State, and ZIP Code) <b>800 N. Quincy Avenue Arlington, VA 22217</b>		10. SOURCE OF FUNDING NUMBERS		
		PROGRAM ELEMENT NO.	PROJECT NO.	TASK NO. <b>413C-013</b>
11. TITLE (Include Security Classification) <b>Crystallization Relationships Between Poly[bis(phenoxy)phosphazene]-(PBPP) Crystals</b>				
12. PERSONAL AUTHOR(S) <b>M. Kojima and J. H. Magill</b>				
13a. TYPE OF REPORT <b>Technical</b>	13b. TIME COVERED FROM _____ TO _____	14. DATE OF REPORT (Year, Month, Day) <b>July 15, 1987</b>	15. PAGE COUNT <b>16</b>	
16. SUPPLEMENTARY NOTATION <b>Submitted to Polymer (London) 1987</b>				
17. COSATI CODES		18. SUBJECT TERMS (Continue on reverse if necessary and identify by block number)		
FIELD	GROUP			SUB-GROUP
19. ABSTRACT (Continue on reverse if necessary and identify by block number)				
<p>Whenever solution grown <math>\alpha</math>-form (3-D) crystals of PBPP were heated in the thermotropic region between <math>T(1)</math> and <math>T_m</math> (the isotropic temperature) they convert to the 2D pseudo-hexagonal, <math>\beta</math>-form crystals. Upon rapid quenching into liquid nitrogen the <math>\beta</math> form "frozen-in" still remains upon warming to room temperature. Further heating close to <math>T(1)</math> produces a 3-D hexagonal modification (<math>\epsilon</math>-form) which is a morphological modification of the monoclinic <math>\alpha</math>-form of PBPP confirmed already by electron diffraction measurements.</p>				
20. DISTRIBUTION / AVAILABILITY OF ABSTRACT <input checked="" type="checkbox"/> UNCLASSIFIED/UNLIMITED <input type="checkbox"/> SAME AS RPT <input type="checkbox"/> DTIC USERS		21. ABSTRACT SECURITY CLASSIFICATION		
22a. NAME OF RESPONSIBLE INDIVIDUAL <b>Dr. Kenneth J. Wynne</b>		22b. TELEPHONE (Include Area Code) <b>202-696-4409</b>	22c. OFFICE SYMBOL	

**CRYSTALLIZATION RELATIONSHIPS BETWEEN  
POLY[BIS(PHENOXY)PHOSPHAZENE]-(PBPP) CRYSYALS**

**M. Kojima and J. H. Magill**

**Materials Science and Engineering Department  
School of Engineering  
University of Pittsburgh  
Pittsburgh, PA 15261**

**ABSTRACT**

Whenever solution grown  $\alpha$ -form (3D) crystals of PBPP were heated in the thermotropic region between  $T(1)$  and  $T_m$  (the isotropic temperature) they convert to the 2D pseudo-hexagonal,  $\delta$ -form crystals. Upon rapid quenching into liquid nitrogen the  $\delta$  form "frozen-in" still remains upon warming to room temperature. Further heating close to  $T(1)$  produces a 3-D hexagonal modification ( $\epsilon$ -form) which is a morphological modification of the monoclinic  $\alpha$ -form of PBPP confirmed already by electron diffraction measurements.

**INTRODUCTION**

Structural and morphological investigations of semi-crystalline polyphosphazenes have been made in order to examine and to clarify the nature of the behavior through the thermotropic transition (1) - (9). Solution grown crystals have been described (1) - (8) and some crystalline modifications were elucidated (1), (3), (6), (7). PBPP crystals can be grown from xylene or cyclohexanone solvents to form monoclinic ( $\alpha$ -form) crystals. Whenever these crystals are heated through  $T(1)$  and then cooled again to room temperature, 2D pseudo-hexagonal  $\delta$ -form and 3D orthorhombic  $\gamma$ -form coexist (3). Crystallographic relationships amongst these modifications of PBPP have been established (2). Our intent in the present work has been to obtain more detailed structural and morphological information relevant to the  $T(1)$  phase transition in polyphosphazenes. This paper is concerned with the formation of morphological modifications of PBPP crystals formed from the disordered state that exists between  $T(1)$  and  $T_m$ .

Accession For	
NTIS GRA&I	<input checked="" type="checkbox"/>
DTIC TAB	<input type="checkbox"/>
Unannounced	<input type="checkbox"/>
Justification	
By _____	
Distribution/	
Availability Codes	
Dist	Avail and/or Special
A-1	



## EXPERIMENTAL

### Materials:

Chemically pure unfractionated poly[bis(phenoxy)phosphazene]-PBPP of narrow molecular weight ( $M_w/M_n < 3$ ) and another sample of broader ( $M_w/M_n > 6$ ) molecular weight distribution was used in this study.

### Solution Grown Crystals:

Crystals were grown from 0.015 wt% PBPP in xylene solution at 65°C for 20 hr. After crystallization, the crystals were washed with fresh xylene at 65°C in order to remove or prevent potentially crystallizable low molecular weight polymer from contaminating the crystals.

### Preparations for Electron Microscopy:

(i) PBPP Crystals supported on carbon film on microscope grids, were heated mostly at 180°C for 1 hr., but temperatures as high as 250°C, were sometimes used. All heat treatments were conducted in nitrogen, followed by quenching into liquid nitrogen. Alternatively cooling to room temperature at a rate of 2°C/min. was also used.

(ii) In other experiments crystals were heated isothermally at 100°C and 120°C respectively (ie below  $T(1)$ ) and at others were maintained 150°C above  $T(1)$  for 1 hr. before being cooled down slowly to room temperature.

### Electron Microscopy:

Samples were examined with a JEOL JEM-200 CX electron microscope at 200KV. Samples were shadowed sometimes with Pd/Au (40/60) metal alloy to enhance specimen contrast.

## RESULTS AND DISCUSSION

Well-defined lathe-shaped PBPP crystals have been reported from dilute xylene solution of polymer (1). Figure 1 shows a series of electron diffraction patterns of PBPP crystals following a variety of thermal treatments. Whenever  $\alpha$ -form crystals (Fig. 1a) are heated above  $T(1)$ , their thermotropic transition temperature, a 2D pseudohexagonal disordered phase is obtained (Fig. 1b). Upon cooling this specimen slowly to room temperature for instance from  $180^{\circ}\text{C}$ , a 3D orthorhombic  $\gamma$ -form results (Fig. 1c) (2), (3).

The electron diffraction of the  $\delta$ -form quenched into liquid nitrogen from above  $T(1)$  is seen to be "frozen-in" and this disordered state even exists at room temperature (see insert in Fig. 3). Note that the glass transition of this material is  $6^{\circ}\text{C}$  (10).

Figure 2 is an electron micrograph of PBPP crystals comprised of lathe-shaped crystals obtained from xylene solution by isothermal crystallization at temperature between  $50^{\circ}\text{C}$  and  $70^{\circ}\text{C}$ . The morphology depends somewhat upon the molecular weight of PBPP (1). Crystals so produced exhibit corrugations across the lateral surface direction as seen in Fig. 2. The "corrugations" seem to be formed during crystallization (more clearly seen in Fig. 2(b)) even though we do not yet understand this morphology. Whenever PBPP crystals are heated above  $T(1)$ , they thicken erratically and this process is seen to be a concomitant with surface roughening of the crystals (3,8). Following quenching into liquid nitrogen from above  $T(1)$ , the same crystalline shapes as are found in the original  $\alpha$ -form crystals persist, with a hint of the surface corrugation still remaining (see Fig. 3).

Both of these morphologies found for the quenched PBPP and for the untreated  $\alpha$ -form PBPP crystals remain unaltered unless the specimens are heated above  $T(1)$ . However, when quenched PBPP is heated above  $T(1)$  and cooled

subsequently to room temperature, the surface morphology changes slightly (less rough in appearance) suggesting some improvement in crystallinity perhaps, with the appearance of the accompanying corrugations. Note that corrugations are more apparent whenever an improvement in crystallinity occurs, for example after heating and slow cooling (Fig. 4), and the electron diffraction pattern shows the 3D  $\gamma$ -form to exist at room temperature. Figure 5(a) is an electron diffraction pattern of the quenched crystal in Fig. 4 formed after heating the sample at 120°C, below T(1) for 1 hr., followed by cooling it to room temperature. It shows a hexagonal symmetry. This result indicates that a new 3D crystal modification is formed from the pseudo-hexagonal 2D crystal. This pattern shown in Fig. 5(a) may be indexed based upon the  $\alpha$ -form unit cell of the PBPP crystal. The results are listed in Table 1 and are also represented diagrammatically in Fig. 5(b).

Below T(1) the  $\alpha$ -form remains upon heat treatment. Whenever transformation occurs from the  $\alpha$ -form to the  $\delta$ -form via T(1) transition temperature, the following crystallographic relationships between both modifications persist: namely the  $[320]_{\alpha}$  and the  $[110]_{\alpha}$  directions remain parallel to the  $[120]_{\delta}$  and the  $[100]_{\delta}$  directions respectively (2).

It has been reported that there are two molecular chains per unit cell and the chain direction lies almost directly along the  $[110]$  direction for the orthorhombic poly[di-(3,4-dimethylphenoxy)phosphazene]-PDMP crystal(11). PBPP is supposed to take on similar structural characteristics as PDMP, involving two molecular chains with four monomer units per cell respectively, the chains being located at the corners and at the center of the monoclinic unit cell. When the  $\alpha$ -crystals transform into the  $\delta$ -form molecular chains may "translate" within the  $(110)_{\alpha}$  plane, during the disordering transformation process. The axial relationship between unit cells of the  $\alpha$ - and the  $\delta$ -form crystals is illustrated in Fig. 6 along

with the superposed locations of the molecular chains in both of these crystal forms of PBPP. The inter-chain separation is  $11.2\text{\AA}$  in the 2D hexagonal modification (2). It is important to note that the d-spacing of  $(100)_\delta$  plane,  $11.2\text{\AA}$ , coincides with that of  $(110)_\alpha$  in the  $\alpha$ -form crystal. During the  $\alpha \rightarrow \gamma$  transformation it appears that the  $11.2\text{\AA}$ , d-spacing common to both forms, is maintained in the  $[110]_\alpha$  or  $[100]_\delta$  direction of the monoclinic or 2D hexagonal modification. These conclusions were established from electron diffraction patterns taken from the same portion of PBPP crystals before and after the transformation (2). These relationships between the  $\alpha$ - and the  $\delta$ -forms provide an explanation for the hexagonal symmetry noted in electron diffraction pattern of Fig. 5.

We presume that the 2D hexagonal modification, obtained by quenching from above  $T(1)$ , crystallizes to the 3D  $\alpha$ -form modification under the proper heat treatment conditions. Molecular chains in the "disordered" states presumably "translate" within the  $\{100\}_\delta$  planes but maintain the inter-chain separation at  $11.2\text{\AA}$ . On the other hand, whenever PBPP crystallizes as the monoclinic  $\alpha$ -form from solution, the molecular chains must grow along the  $[\bar{3}20]$  direction which is the long axis direction of these lathe-shaped crystals, and chain folding must occur predominately within the  $(110)$  plane (2). Consequently, when molecular chains reorganize from the disordered hexagonal state into the monoclinic  $\alpha$ -form they may move along the  $\{100\}_\delta$  planes in a reverse fashion to that which happens whenever the  $\alpha \rightarrow \delta$  phase transition occurs. The  $\delta$ -hexatic phase of PBPP seen in Fig. 3 (insert) processes six equivalent  $(100)$  planes. Reorganization of the molecular chains in the  $\delta$ -form simultaneously occurs via advancement along the six  $\{100\}_\delta$  planes. These  $\{100\}_\delta$  planes also correspond to  $(110)_\alpha$  planes as already outlined, thus it seems likely that the chains rearrange to make the  $\alpha$ -form

modification. Figure 7 shows how the axial relationship of two  $\alpha$ -form crystals may originate from the  $(100)_\delta$  and the  $(\bar{1}20)_\delta$  planes respectively using the reciprocal unit cell illustration of the  $\alpha$ -forms. Each  $[110]_\alpha$  direction makes an angle of  $60^\circ$ . In fact, all  $(hko)$  and/or  $(\bar{h}\bar{k}o)$  reflections except  $(1\bar{1}0)$  and  $(3\bar{1}0)$  reflections which are located very close to the  $a^*$  axis in the  $a^*b^*$  reciprocal net are observed in Fig. 5(b) and spacings are given in Table 1. This behavior may also be interpreted to mean that orientational growth occurs in the  $\langle 110 \rangle_\alpha$  directions corresponding to the six  $\langle 100 \rangle_\delta$  directions of the hexagonal form of PBPP. Thus the formation of the hexagonally symmetrical pattern of Fig. 5(a) can be explained. It therefore seems that this peculiar pattern does exist as a new morphological modification of the  $\alpha$ -form PBPP crystal specified here as the  $\epsilon$ -form. Note that the  $\epsilon$ -form can be obtained from the  $\delta$ -form PBPP only whenever the latter is warmed to just below  $T(1)$ , i.e. when the system is thermally activated. The  $\delta$ -form that exists between  $T(1)$  and  $T_m$  does not give rise the  $\epsilon$ -form directly upon cooling. Only the kinetically favored and more stable  $\gamma$ -form is obtained directly upon cooling the  $\delta$ -form specimen below  $T(1)$ .

## CONCLUSION

1. The 2D PBPP modification ( $\delta$ -form) exists at room temperature whenever it is quenched from above  $T(1)$  to liquid nitrogen temperature and then warmed up to room temperature.
2. The 3D  $\epsilon$ -crystal modification persists after heating the  $\delta$ -modification to just below  $T(1)$  followed by cooling down to room temperature.
3. Electron diffraction patterns obtained from the heated  $\delta$  form PBPP slightly below  $T(1)$  exhibits hexagonal symmetry. All reflections have been indexed using  $\alpha$ -form unit cell of the PBPP crystal.
4. The hexagonal 3D  $\epsilon$ -crystals appear to be a morphological modification of the well known  $\alpha$ -form of PBPP.
5. The  $\epsilon$ -form can be obtained only by annealing the quenched  $\delta$ -form PBPP just below, but close to  $T(1)$ .
6. Normal and slow cooling of the  $\delta$ -form from above  $T(1)$  to room temperature and below it, gives the 3D  $\delta$ -form of PBPP.

## REFERENCES

1. M. Kojima and J. H. Magill, *Polymer Comm.*, **24**, 329 (1983).
2. M. Kojima, H. Satake, T. Masuko and J. H. Magill, *J. Materials Sci.*, (to be published) (1987).
3. M. Kojima and J. H. Magill, "Morphology of Polymers", B. Sedlacek ed., p.439 Walter de Gruyter & Co., Berlin, NY, (1986).
4. M. Kojima and J. H. Magill, *Polymer* **26**, 1971 (1985).
5. J. H. Magill and C. Riekel, *Makromol. Chem. Rapid Comm.*, **7**, 287 (1986).
6. M. Kojima and J. H. Magill, *Makromol. Chem.*, **186**, 649 (1985).
7. S. V. Meille, W. Porzio, A. Bolognesi and M. Gleria, *Makromol. Chem. Rapid Comm.*, **8**, 43 (1987).
8. M. Kojima, W. Kluge and J. H. Magill, *Macromolecules*, **17**, 1421 (1984).
9. M. Kojima and J. H. Magill, *Polymer Comm.*, **25**, 273 (1984).
10. D. C. Sun and J. H. Magill, *Polymer* **xx**, in press (1987).
11. C. W. Burkhart, P. C. Gillett, J. B. Lando and J. J. Beres, *J. Polymer Sci., Polym. Phys. ed.*, **21**, 2349 (1983).

## Acknowledgements

Partial support for this study was provided by the National Science Foundation, Polymer Program (DMR 8509412) and Chemistry Division of ONR #N00014-85-K-0358.

## FIGURE LEGENDS

- Figure 1** Electron diffraction patterns of solution grown PBPP crystals showing the effect of thermal history on morphology in (a) as-crystallized, at room temperature ( $\alpha$ -form), (b) at 180°C ( $\delta$ -form), (c) after slow cooling from 180°C to room temperature ( $\gamma$ -form).
- Figure 2** Transmission (a) and scanning (b) electron micrograph of PBPP crystals formed from xylene solution.
- Figure 3** Room temperature electron micrograph of PBPP crystals after quenching into liquid nitrogen from 180°C. Note the electron diffraction insert obtained at room temperature.
- Figure 4** Electron micrograph of PBPP crystals obtained after quenching from 180°C into liquid nitrogen followed by heating to 120°C for 1 hr., and afterwards cooling to room temperature.
- Figure 5** (a) Electron diffraction pattern of PBPP crystals in Fig. 4 and (b) schematic representation of (a) with indexed reflections.
- Figure 6** Relationship between the  $\alpha$ -form (●) and the  $\delta$ -form (○) PBPP showing crystallographic axes.
- Figure 7** Relationship between the two  $\alpha$ - forms ascribed as originating from the {100} planes of the  $\delta$ -form PBPP shown using the reciprocal unit cell.

## TABLES

- Table 1** Calculated d-spacings with Miller indices for the  $\alpha$ -form of PBPP and observed d-spacings for the hexagonally symmetric reflections shown in Figure 5.

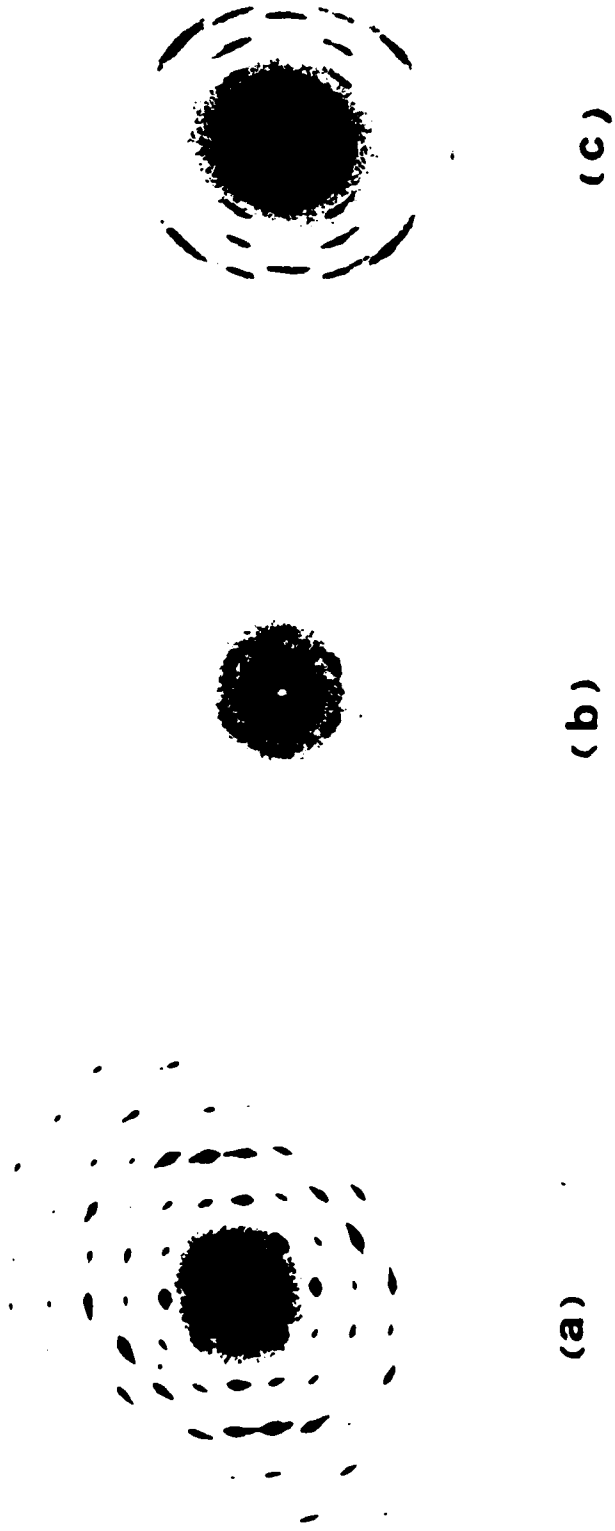
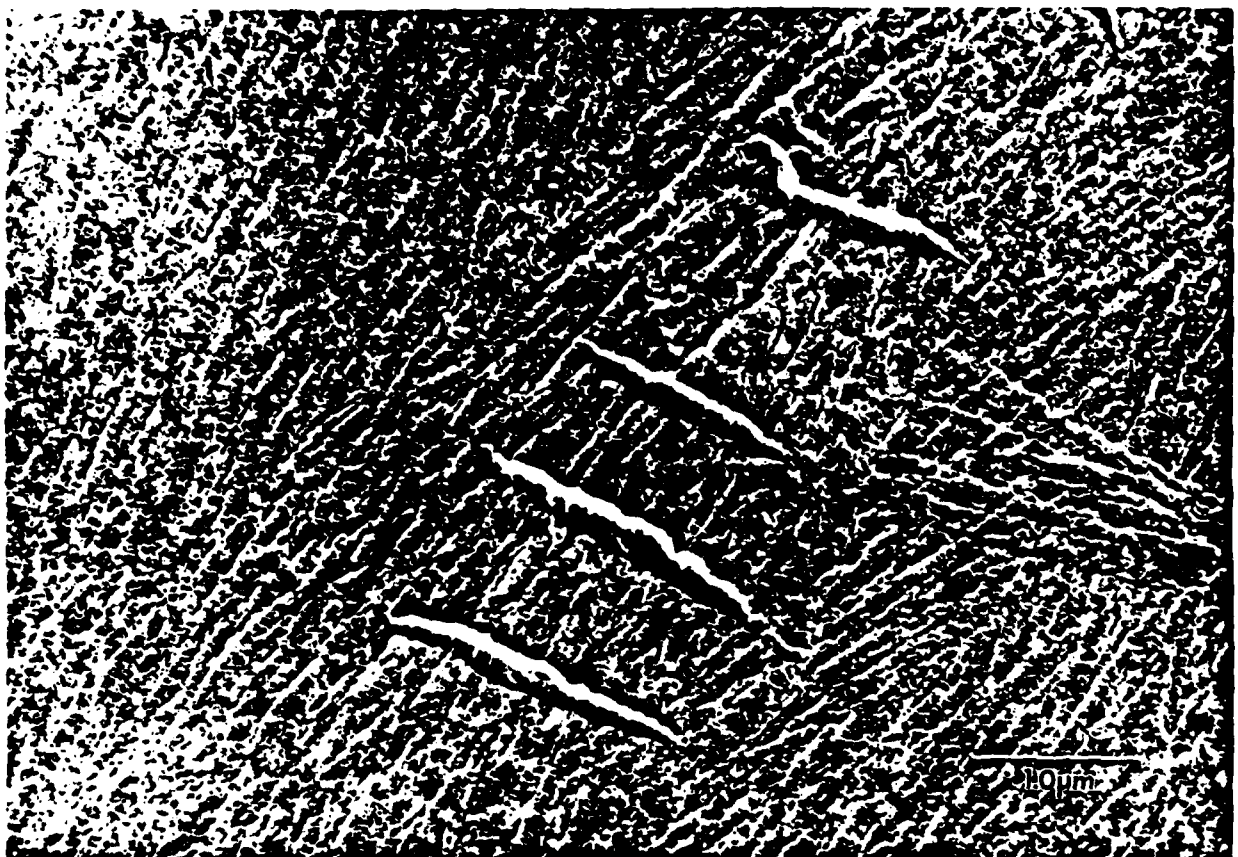


Figure 1 Electron diffraction patterns of solution grown PBPP crystals showing the effect of thermal history on morphology in (a) as-crystallized, at room temperature ( $\alpha$ -form), (b) at 180°C ( $\delta$ -form), (c) after slow cooling from 180°C to room temperature ( $\gamma$ -form).

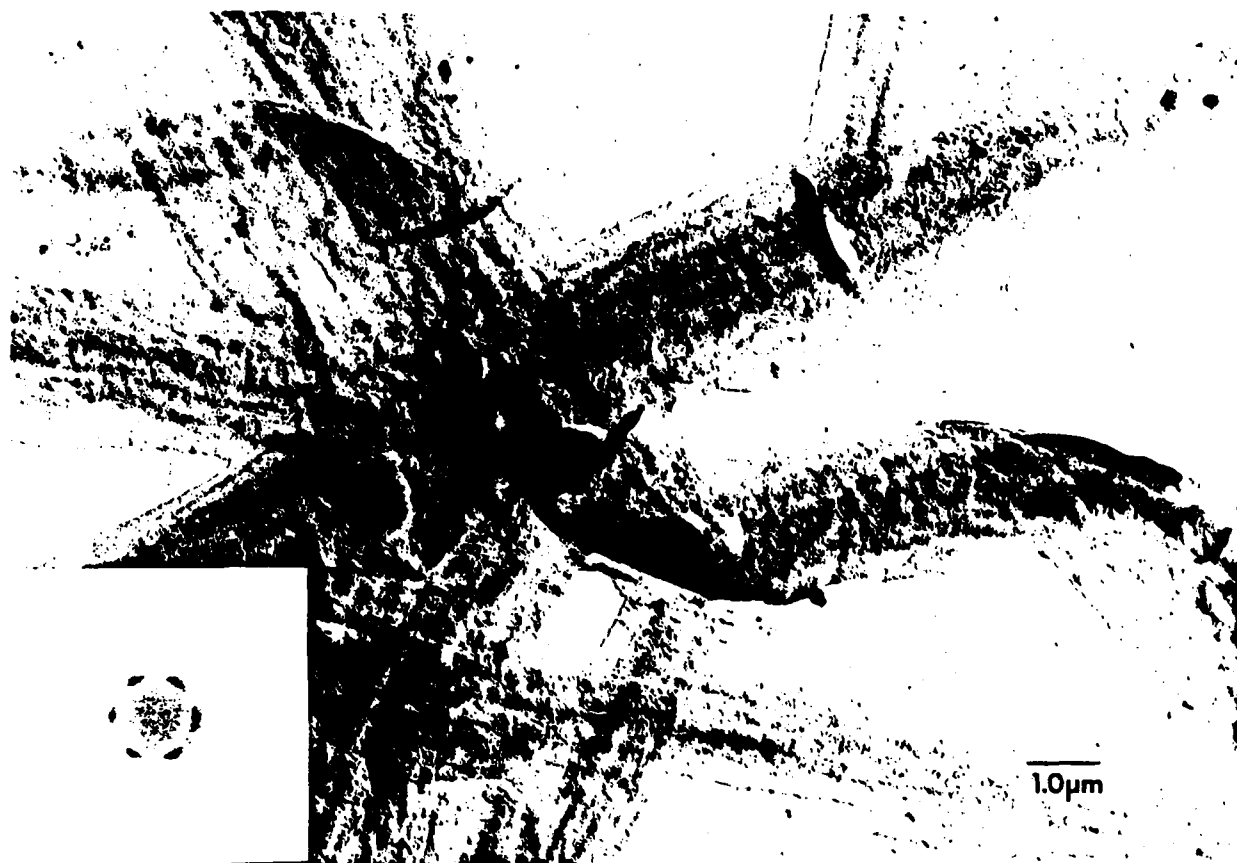


(a)



(b)

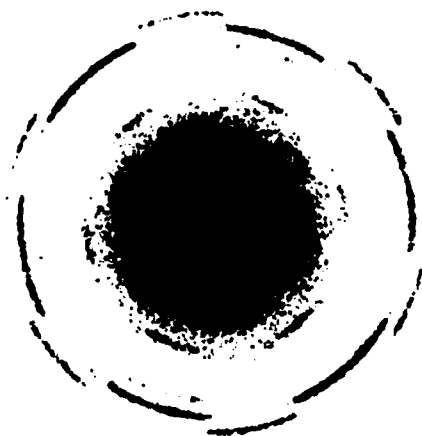
Figure 2 Transmission (a) and scanning (b) electron micrograph of PBPP crystals formed from xylene solution.



**Figure 3** Room temperature electron micrograph of PBPP crystals after quenching into liquid nitrogen from 180°C. Note the electron diffraction insert obtained at room temperature.



**Figure 4** Electron micrograph of PBPP crystals obtained after quenching from 180°C into liquid nitrogen followed by heating to 120°C for 1 hr., and afterwards cooling to room temperature.



( a )

Figure 5 (a) Electron diffraction pattern of PBPP crystals in Fig. 4 and (b) schematic representation of (a) with indexed reflections.



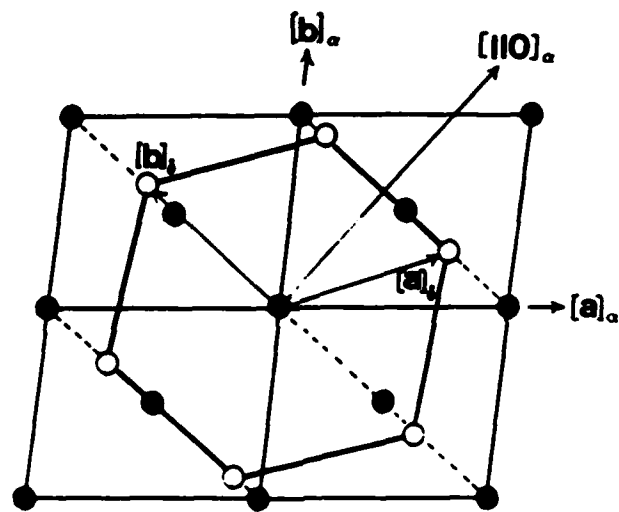


Figure 6 Relationship between the  $\alpha$ -form (●) and the  $\delta$ -form (○) PBPP showing crystallographic axes.

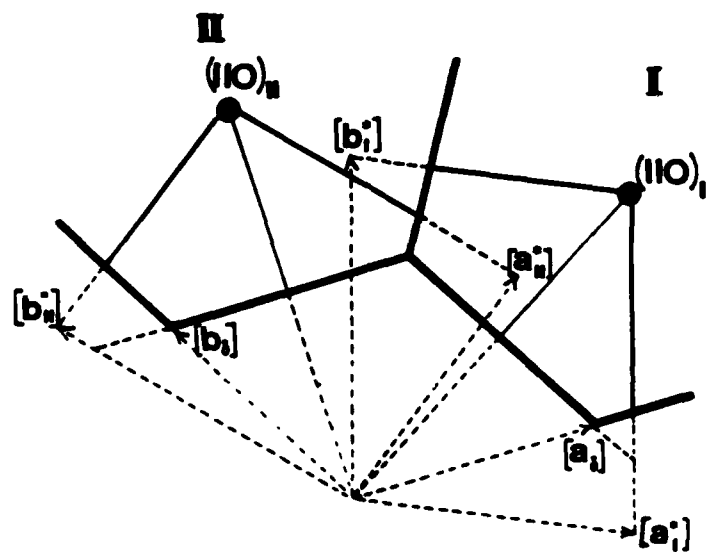


Figure 7 Relationship between the two  $\alpha$ -forms ascribed as originating from the  $\{100\}$  planes of the  $\delta$ -form PBPP shown using the reciprocal unit cell

Table 1 Calculated d-spacing with Miller indices for the  $\alpha$ -form of PBPP and observed d-spacings ( $A^{15}$ ) for the hexagonally symmetric reflections shown in Figure 5.

$\alpha$ -Form			Obs.	
$a=16.5$	$b=13.7$			
(hkl)	d	I	d	I
110	11.2	VS	11.2	
1 $\bar{1}$ 0	9.95	VS	10.2	
200	8.23	S	8.26	
210	7.47	M		-
020	6.85	S	6.89	
120	6.62	W		-
300	5.49	MS		
3 $\bar{1}$ 0	4.90	S	4.97	
130	4.54	M	4.56	
230	4.22	W	4.26	
330	3.74	W	3.78	

TECHNICAL REPORT DISTRIBUTION LIST, GEN

	<u>No. Copies</u>		<u>No. Copies</u>
Office of Naval Research Attn: Code 413 800 N. Quincy Street Arlington, Virginia 22217	2	Dr. David Young Code 334 NORDA NSTL, Mississippi 39529	1
Dr. Bernard Douda Naval Weapons Support Center Code 5042 Crane, Indiana 47522	1	Naval Weapons Center Attn: Dr. Ron Atkins Chemistry Division China Lake, California 93555	1
Commander, Naval Air Systems Command Attn: Code 310C (H. Rosenwasser) Washington, D.C. 20360	1	Scientific Advisor Commandant of the Marine Corps Code RD-1 Washington, D.C. 20380	1
Naval Civil Engineering Laboratory Attn: Dr. R. W. Drisko Port Hueneme, California 93401	1	U.S. Army Research Office Attn: CRD-AA-IP P.O. Box 12211 Research Triangle Park, NC 27709	1
Defense Technical Information Center Building 5, Cameron Station Alexandria, Virginia 22314	12	Mr. John Boyle Materials Branch Naval Ship Engineering Center Philadelphia, Pennsylvania 19112	1
DTNSRDC Attn: Dr. G. Bosmajian Applied Chemistry Division Annapolis, Maryland 21401	1	Naval Ocean Systems Center Attn: Dr. S. Yamamoto Marine Sciences Division San Diego, California 91232	1
Dr. William Tolles Superintendent Chemistry Division, Code 6100 Naval Research Laboratory Washington, D.C. 20375	1		

END

9-87

Dtic