

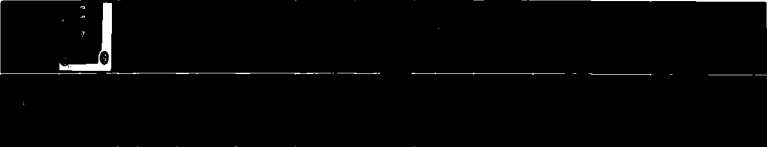
AD-A185 135

SELECTED MEDICAL CARE STATISTICS QUARTER ENDING JUNE
<30> <1987> (U) WASHINGTON HEADQUARTERS SERVICES (DOD)
DC DIRECTORATE FOR INFORMATION OPERATIONS AND REPORTS
30 JUN 87 DIOC/L02-87/03 F/G 6/3

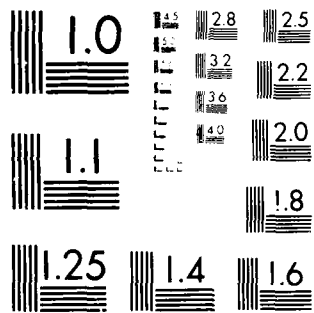
1/1

UNCLASSIFIED

ML



END
DATE
FILMED
11 '87
DTIC



MICROCOPY RESOLUTION TEST CHART
NATIONAL BUREAU OF STANDARDS-1963-A



OSD

WASHINGTON HEADQUARTERS SERVICES

AD-A185 135

OTC FILE COPY

12

L02

Department of Defense SELECTED MEDICAL CARE STATISTICS

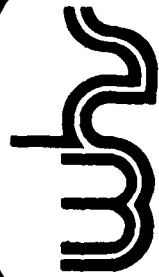
Quarter Ending June 30, 1987



DTIC
ELECTE
OCT 22 1987
S D

DISTRIBUTION STATEMENT A
Approved for public release;
Distribution Unlimited

87 10 1 187



DIRECTORATE FOR INFORMATION
OPERATIONS AND REPORTS (DIOR)

Department of Defense Selected Medical Care Statistics

Quarter Ending June 30, 1987

Washington Headquarters Services
Directorate for Information
Operations and Reports



Accession For	NTIS	CRA&I	<input checked="" type="checkbox"/>
	DTIC	TAR	<input type="checkbox"/>
	Unannounced	and	<input type="checkbox"/>
	Justification		
By			
Distribution			
Availability Codes			
DTIC	Availability	or	Special
	A-1		

~~FOR SALE BY THE SUPERINTENDENT OF DOCUMENTS
U.S. GOVERNMENT PRINTING OFFICE
WASHINGTON, D.C. 20402~~

DTIC and NTIS identification number for this publication is DIOR/LO2-87/03.

FOREWORD

Selected Medical Care Statistics (SMCS) is a quarterly publication prepared by the Washington Headquarters Services, Directorate for Information Operations and Reports (WHS/DIOR) of the Office of the Secretary of Defense.

SMCS presents quarterly summary data concerning medical care provided at fixed military medical facilities located in (1) the United States and (2) outside the United States, in territories, possessions and foreign countries. This publication contains pie charts which are based on the percent of the worldwide DoD total for each of the categories. Admissions and beds occupied by dependents of other uniformed personnel (PHS, CG, NOAA) are less than one percent and are included in the other category.

This publication is generated from a computerized data base developed and maintained in consonance with Department of Defense Instruction (DoDI) 6015.14, November 14, 1977, under Reports Control Symbol DD-COMP(Q)1474 by the Manpower Management Information Division of WHS/DIOR.

TABLE OF CONTENTS

TABLE NUMBER		PAGE
Table 1.1	Operating Beds/Operating Bassinets/Beds Occupied - Worldwide.....	1
Figure 1.1	Beds Occupied - Percent of DoD Total Worldwide.....	3
Table 1.2	Operating Beds/Operating Bassinets/Beds Occupied - United States.....	4
Table 1.3	Operating Beds/Operating Bassinets/Beds Occupied - Outside United States.....	6
Table 2.1	Admissions - Worldwide.....	8
Figure 2.1	Admissions - Percent of DoD Total Worldwide.....	10
Table 2.2	Admissions - United States.....	11
Table 2.3	Admissions - Outside United States.....	13
Table 3.1	Outpatient Visits and Live Births - Worldwide.....	15
Figure 3.1	Outpatient Visits - Percent of Worldwide Total.....	17
Table 3.2	Outpatient Visits and Live Births - United States.....	18
Table 3.3	Outpatient Visits and Live Births - Outside United States.....	20
	GLOSSARY.....	23

**TABLE 1.1
DEPARTMENT OF DEFENSE
SELECTED DATA CONCERNING MEDICAL CARE
PROVIDED AT FIXED MILITARY FACILITIES
FOR QUARTER ENDING JUNE 30, 1987**

	OPERATING BEDS - WORLDWIDE	DOD TOTAL	ARMY FACILITIES	NAVY FACILITIES	AIR FORCE FACILITIES
1	NUMBER OF OPERATING BEDS - TOTAL	17,536	7,923	4,157	5,456
2	NUMBER OF OPERATING BASSINETS - TOTAL	1,944	608	232	1,104
3	NUMBER OF BEDS OCCUPIED (DAILY AVERAGE) - TOTAL	13,190	6,447	2,647	4,096
4	BEDS OCCUPIED BY US ACTIVE DUTY UNIFORMED PERSONNEL - TOTAL	5,234	2,465	1,478	1,291
A	MILITARY - TOTAL	5,183	2,451	1,453	1,279
	(1) ARMY	2,294	2,108	44	142
	(2) NAVY-MARINE CORPS	1,636	160	1,369	107
	(3) AIR FORCE	1,253	183	40	1,030
B	OTHER UNIFORMED PERSONNEL (PHS CG NOAA) - TOTAL	51	14	25	12
5	BEDS OCCUPIED BY RETIRED US UNIFORMED PERSONNEL - TOTAL	2,060	1,052	294	714
A	RETIRED MILITARY - TOTAL	2,042	1,047	287	708
	(1) ARMY	900	704	46	150
	(2) NAVY-MARINE CORPS	428	119	200	109
	(3) AIR FORCE	714	224	41	449
B	OTHER RETIRED UNIFORMED PERSONNEL (PHS CG NOAA) - TOTAL	18	5	7	6

**TABLE 1.1
DEPARTMENT OF DEFENSE
SELECTED DATA CONCERNING MEDICAL CARE
PROVIDED AT FIXED MILITARY FACILITIES
FOR QUARTER ENDING JUNE 30, 1987**

OPERATING BEDS - WORLDWIDE	DOD TOTAL	ARMY FACILITIES	NAVY FACILITIES	AIR FORCE FACILITIES
6. BEDS OCCUPIED BY DEPENDENTS OF US ACTIVE DUTY MILITARY PERSONNEL	3 567	1 697	565	1 305
(1) ARMY	1 511	1 352	29	130
(2) NAVY-MARINE CORPS	747	140	491	116
(3) AIR FORCE	1 309	205	45	1 059
TOTAL				
7. BEDS OCCUPIED BY DEPENDENTS OF RETIRED AND DECEASED US MILITARY PERSONNEL	1 735	818	236	681
(1) ARMY	722	543	35	144
(2) NAVY-MARINE CORPS	355	91	168	96
(3) AIR FORCE	658	184	33	441
TOTAL				
8. BEDS OCCUPIED BY DEPENDENTS OF OTHER UNIFORMED PERSONNEL (PHO, CG, NOAA)	43	15	11	17
TOTAL				
9. BEDS OCCUPIED BY ALL OTHER BENEFICIARIES	551	400	63	88
TOTAL				

**BEDS OCCUPIED—PERCENT OF DOD TOTAL WORLDWIDE
QUARTER ENDING JUNE 30, 1987**

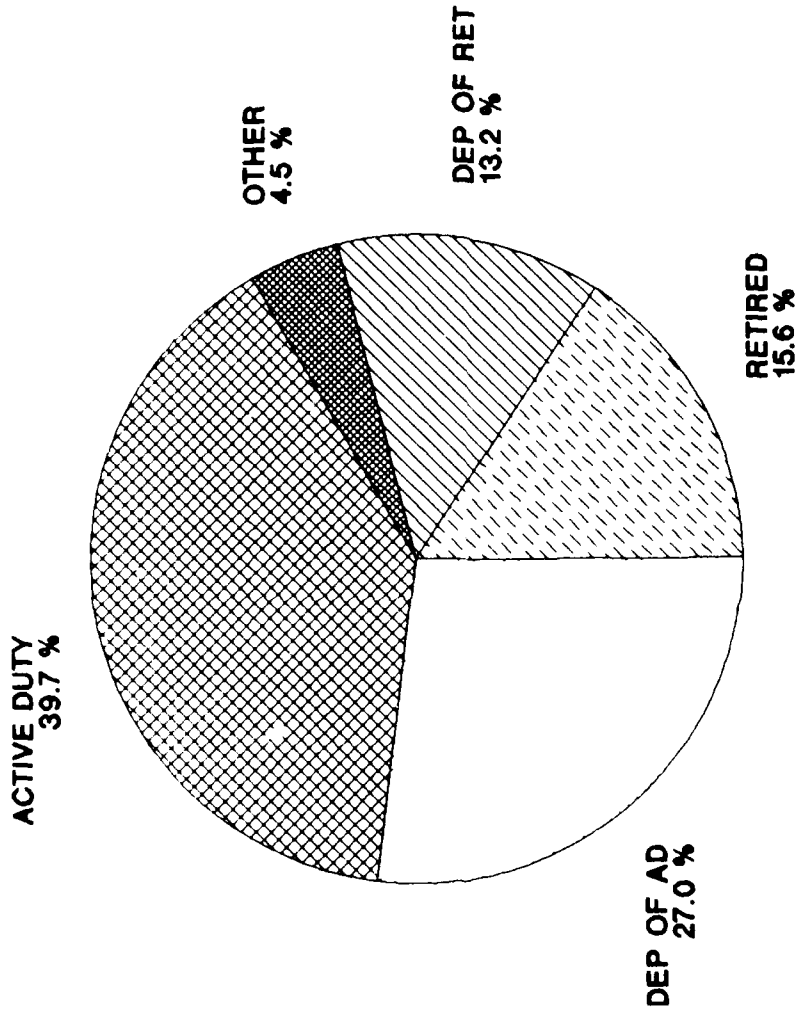


FIGURE 1.1

**TABLE 1.2
DEPARTMENT OF DEFENSE
SELECTED DATA CONCERNING MEDICAL CARE
PROVIDED AT FIXED MILITARY FACILITIES
FOR QUARTER ENDING JUNE 30, 1987**

OPERATING BEDS - UNITED STATES		DOD TOTAL	ARMY FACILITIES	NAVY FACILITIES	AIR FORCE FACILITIES
1	NUMBER OF OPERATING BEDS - TOTAL	14,931	6,436	3,717	4,778
2	NUMBER OF OPERATING BASSINETS - TOTAL	1,602	459	193	950
3	NUMBER OF BEDS OCCUPIED (DAILY AVERAGE) - TOTAL	11,179	5,303	2,314	3,562
4	BEDS OCCUPIED BY US ACTIVE DUTY UNIFORMED PERSONNEL - TOTAL	4,191	1,861	1,277	1,053
A	MILITARY - TOTAL	4,141	1,847	1,253	1,041
	(1) ARMY	1,712	1,563	40	109
	(2) NAVY-MARINE CORPS	1,421	147	1,186	88
	(3) AIR FORCE	1,008	137	27	844
B	OTHER UNIFORMED PERSONNEL (PHS.CG.NOAA) - TOTAL	50	14	24	12
5	BEDS OCCUPIED BY RETIRED US UNIFORMED PERSONNEL - TOTAL	1,995	1,020	283	692
A	RETIRED MILITARY - TOTAL	1,978	1,015	277	686
	(1) ARMY	866	680	42	144
	(2) NAVY-MARINE CORPS	417	118	195	104
	(3) AIR FORCE	695	217	40	438
B	OTHER RETIRED UNIFORMED PERSONNEL (PHS.CG.NOAA) - TOTAL	17	5	6	6

**TABLE 1.2
DEPARTMENT OF DEFENSE
SELECTED DATA CONCERNING MEDICAL CARE
PROVIDED AT FIXED MILITARY FACILITIES
FOR QUARTER ENDING JUNE 30, 1987**

OPERATING BEDS - UNITED STATES	DOD TOTAL	ARMY FACILITIES	NAVY FACILITIES	AIR FORCE FACILITIES
b BEDS OCCUPIED BY DEPENDENTS OF US ACTIVE DUTY MILITARY PERSONNEL	- TOTAL 2,800	1,271	463	1,066
(1) ARMY	1,119	996	24	99
(2) NAVY-MARINE CORPS	646	131	419	96
(3) AIR FORCE	1,035	144	20	871
c BEDS OCCUPIED BY DEPENDENTS OF RETIRED AND DECEASED US MILITARY PERSONNEL	- TOTAL 1,692	802	226	664
(1) ARMY	706	533	34	139
(2) NAVY-MARINE CORPS	342	89	162	91
(3) AIR FORCE	644	180	30	434
d BEDS OCCUPIED BY DEPENDENTS OF OTHER UNIFORMED PERSONNEL (PHS CG NOAA)	- TOTAL 43	15	11	17
e BEDS OCCUPIED BY ALL OTHER BENEFICIARIES	- TOTAL 458	334	54	70

TABLE 1.3
DEPARTMENT OF DEFENSE
SELECTED DATA CONCERNING MEDICAL CARE
PROVIDED AT FIXED MILITARY FACILITIES
FOR QUARTER ENDING JUNE 30, 1987

	OPERATING BEDS - OUTSIDE UNITED STATES	DOD TOTAL	ARMY FACILITIES	NAVY FACILITIES	AIR FORCE FACILITIES
1	NUMBER OF OPERATING BEDS - TOTAL	2,605	1,487	440	678
2	NUMBER OF OPERATING BASSINETS - TOTAL	342	149	39	154
3	NUMBER OF BEDS OCCUPIED (DAILY AVERAGE) - TOTAL	2,011	1,144	333	534
4	BEDS OCCUPIED BY US ACTIVE DUTY UNIFORMED PERSONNEL - TOTAL	1,043	604	201	238
	A MILITARY - TOTAL	1,042	604	200	238
	(1) ARMY	582	545	4	33
	(2) NAVY-MARINE CORPS	215	13	183	19
	(3) AIR FORCE	245	46	13	186
B	OTHER UNIFORMED PERSONNEL (PHS CG, NOAA) - TOTAL	1	0	1	0
5	BEDS OCCUPIED BY RETIRED US UNIFORMED PERSONNEL - TOTAL	65	32	11	22
	A RETIRED MILITARY - TOTAL	64	32	10	22
	(1) ARMY	34	24	4	6
	(2) NAVY-MARINE CORPS	11	1	5	5
	(3) AIR FORCE	19	7	1	11
B	OTHER RETIRED UNIFORMED PERSONNEL (PHS, CG, NOAA) - TOTAL	1	0	1	0

**TABLE 1.3
DEPARTMENT OF DEFENSE
SELECTED DATA CONCERNING MEDICAL CARE
PROVIDED AT FIXED MILITARY FACILITIES
FOR QUARTER ENDING JUNE 30, 1987**

	OPERATING BEDS - OUTSIDE UNITED STATES	DOD TOTAL	ARMY FACILITIES	NAVY FACILITIES	AIR FORCE FACILITIES
6	BEDS OCCUPIED BY DEPENDENTS OF US ACTIVE DUTY MILITARY PERSONNEL - TOTAL	767	426	102	239
	(1) ARMY	392	356	5	31
	(2) NAVY-MARINE CORPS	101	9	72	20
	(3) AIR FORCE	274	61	25	188
7	BEDS OCCUPIED BY DEPENDENTS OF RETIRED AND DECEASED US MILITARY PERSONNEL - TOTAL	43	16	10	17
	(1) ARMY	16	10	1	5
	(2) NAVY-MARINE CORPS	13	2	6	5
	(3) AIR FORCE	14	4	3	7
8	BEDS OCCUPIED BY DEPENDENTS OF OTHER UNIFORMED PERSONNEL (PHS, CG, NOAA) - TOTAL	0	0	0	0
9	BEDS OCCUPIED BY ALL OTHER BENEFICIARIES - TOTAL	93	66	9	18

TABLE 2.1
DEPARTMENT OF DEFENSE
SELECTED DATA CONCERNING MEDICAL CARE
PROVIDED AT FIXED MILITARY FACILITIES
FOR QUARTER ENDING JUNE 30, 1987

	ADMISSIONS - WORLDWIDE	DDO TOTAL	ARMY FACILITIES	NAVY FACILITIES	AIR FORCE FACILITIES
10	NUMBER OF ADMISSIONS	230,386	105,938	51,794	72,654
11	ADMISSIONS OF US ACTIVE DUTY UNIFORMED PERSONNEL	73,616	31,687	22,327	19,602
	A MILITARY	73,005	31,544	22,035	19,426
	(1) ARMY	29,757	27,585	645	1,527
	(2) NAVY-MARINE CORPS	23,557	1,763	20,663	1,131
	(3) AIR FORCE	19,691	2,196	727	16,768
	B OTHER UNIFORMED PERSONNEL (PHS.CG.NOAA)	611	143	292	176
12	ADMISSIONS OF RETIRED US UNIFORMED PERSONNEL	26,351	13,255	4,636	8,460
	A ADMISSIONS OF RETIRED MILITARY	26,122	13,183	4,544	8,395
	(1) ARMY	11,167	8,856	684	1,627
	(2) NAVY-MARINE CORPS	5,956	1,560	3,208	1,188
	(3) AIR FORCE	8,999	2,767	652	5,580
	B ADMISSIONS OF OTHER RETIRED UNIFORMED PERSONNEL (PHS.CG.NOAA)	229	72	92	65
13	ADMISSIONS OF DEPENDENTS OF US ACTIVE DUTY PERSONNEL (PHS.CG.NOAA)	94,468	42,626	19,307	32,535
	A ARMY	38,760	35,091	854	2,815
	B NAVY-MARINE CORPS	22,791	3,212	17,078	2,501
	C AIR FORCE	32,917	4,323	1,375	27,219

**TABLE 2.1
DEPARTMENT OF DEFENSE
SELECTED DATA CONCERNING MEDICAL CARE
PROVIDED AT FIXED MILITARY FACILITIES
FOR QUARTER ENDING JUNE 30, 1987**

ADMISSIONS - WORLDWIDE		DOD TOTAL	ARMY FACILITIES	NAVY FACILITIES	AIR FORCE FACILITIES
14	ADMISSIONS OF DEPENDENTS OF RETIRED AND DECEASED US MILITARY PERSONNEL	- TOTAL	11,939	4,314	9,980
	A ARMY	10,610	7,966	658	1,986
	B NAVY-MARINE CORPS	5,850	1,377	3,079	1,394
	C AIR FORCE	9,773	2,596	577	6,600
15	ADMISSIONS OF DEPENDENTS OF OTHER UNIFORMED PERSONNEL (PHS, CG, NOAA)	- TOTAL	989	335	341
16	ADMISSIONS OF ALL OTHER BENEFICIARIES	- TOTAL	8,729	6,118	1,736

**ADMISSIONS-PERCENT OF DOD TOTAL WORLDWIDE
QUARTER ENDING JUNE 30, 1987**

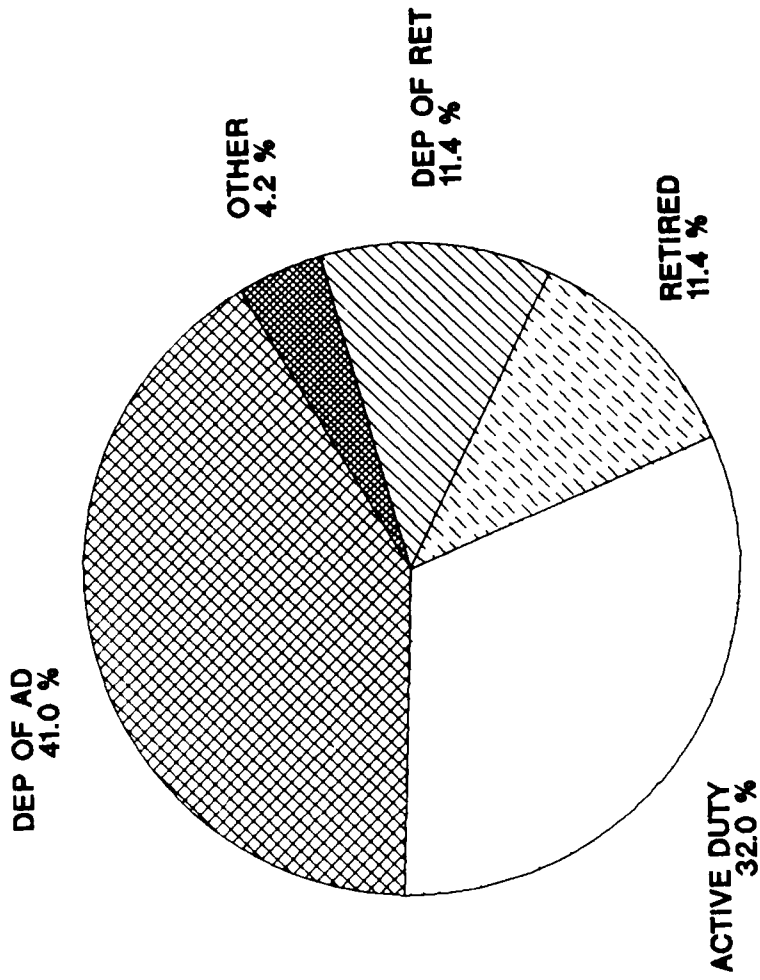


FIGURE 2.1

**TABLE 2.2
DEPARTMENT OF DEFENSE
SELECTED DATA CONCERNING MEDICAL CARE
PROVIDED AT FIXED MILITARY FACILITIES
FOR QUARTER ENDING JUNE 30, 1987**

ADMISSIONS - UNITED STATES		DOD TOTAL	ARMY FACILITIES	NAVY FACILITIES	AIR FORCE FACILITIES
10	NUMBER OF ADMISSIONS	- TOTAL	85,985	44,433	62,293
11	ADMISSIONS OF US ACTIVE DUTY UNIFORMED PERSONNEL	- TOTAL	23,778	18,991	15,775
A	MILITARY	- TOTAL	23,635	18,719	15,605
	(1) ARMY	22,100	20,536	552	1,012
	(2) NAVY-MARINE CORPS	20,201	1,609	17,710	882
	(3) AIR FORCE	15,658	1,490	457	13,711
B	OTHER UNIFORMED PERSONNEL (PHS.CG.NDAA)	585	143	272	170
12	ADMISSIONS OF RETIRED US UNIFORMED PERSONNEL	- TOTAL	12,876	4,425	8,206
A	ADMISSIONS OF RETIRED MILITARY	25,284	12,804	4,337	8,143
	(1) ARMY	10,753	8,566	616	1,571
	(2) NAVY-MARINE CORPS	5,766	1,539	3,092	1,135
	(3) AIR FORCE	8,765	2,699	629	5,437
B	ADMISSIONS OF OTHER RETIRED UNIFORMED PERSONNEL (PHS.CG.NDAA)	223	72	88	63
13	ADMISSIONS OF DEPENDENTS OF US ACTIVE DUTY PERSONNEL (PHS.CG.NDAA)	- TOTAL	32,128	15,952	26,941
A	ARMY	28,858	26,083	654	2,121
B	NAVY-MARINE CORPS	20,038	3,079	14,744	2,215
C	AIR FORCE	26,125	2,966	554	22,605

**TABLE 2.2
DEPARTMENT OF DEFENSE
SELECTED DATA CONCERNING MEDICAL CARE
PROVIDED AT FIXED MILITARY FACILITIES
FOR QUARTER ENDING JUNE 30, 1987**

ADMISSIONS - UNITED STATES		DOD TOTAL	ARMY FACILITIES	NAVY FACILITIES	AIR FORCE FACILITIES
04	ADMISSIONS OF DEPENDENTS OF RETIRED AND DECEASED US MILITARY PERSONNEL	- TOTAL 25,552	11,684	4,127	9,741
	A ARMY	10,312	7,792	591	1,929
	B NAVY-MARINE CORPS	5,666	1,359	2,973	1,334
	C AIR FORCE	9,574	2,533	563	6,478
05	ADMISSIONS OF DEPENDENTS OF OTHER UNIFORMED PERSONNEL (PHS CG NOAA)	- TOTAL 944	313	296	335
06	ADMISSIONS OF ALL OTHER BENEFICIARIES	- TOTAL 7,143	5,206	642	1,295

**TABLE 2.3
DEPARTMENT OF DEFENSE
SELECTED DATA CONCERNING MEDICAL CARE
PROVIDED AT FIXED MILITARY FACILITIES
FOR QUARTER ENDING MARCH 31, 1987**

ADMISSIONS - OUTSIDE UNITED STATES		DOD TOTAL	ARMY FACILITIES	NAVY FACILITIES	AIR FORCE FACILITIES
10	NUMBER OF ADMISSIONS - TOTAL	37 675	19 953	7 361	10 361
11	ADMISSIONS OF US ACTIVE DUTY UNIFORMED PERSONNEL - TOTAL	15 072	7 909	3 336	3 827
	A MILITARY	15 046	7 909	3 316	3 821
	(1) ARMY	7 657	7 049	93	515
	(2) NAVY-MARINE CORPS	3 356	154	2 953	249
	(3) AIR FORCE	4 033	706	270	3 057
	B OTHER UNIFORMED PERSONNEL (PHS CG NOAA) - TOTAL	26	0	20	6
12	ADMISSIONS OF RETIRED US UNIFORMED PERSONNEL - TOTAL	844	379	211	254
	A ADMISSIONS OF RETIRED MILITARY	838	379	207	252
	(1) ARMY	414	290	68	56
	(2) NAVY-MARINE CORPS	190	21	116	53
	(3) AIR FORCE	234	68	23	143
	B ADMISSIONS OF OTHER RETIRED UNIFORMED PERSONNEL (PHS CG NOAA) - TOTAL	6	0	4	2
13	ADMISSIONS OF DEPENDENTS OF US ACTIVE DUTY PERSONNEL (PHS CG NOAA) - TOTAL	19 447	10 498	3 355	5 594
	A ARMY	9 902	9 008	200	694
	B NAVY-MARINE CORPS	2,753	133	2 334	286
	C AIR FORCE	6,792	1 357	821	4 614

TABLE 2.3
DEPARTMENT OF DEFENSE
SELECTED DATA CONCERNING MEDICAL CARE
PROVIDED AT FIXED MILITARY FACILITIES
FOR QUARTER ENDING MARCH 31, 1987

	ADMISSIONS - OUTSIDE UNITED STATES	DOD TOTAL	ARMY FACILITIES	NAVY FACILITIES	AIR FORCE FACILITIES
14	ADMISSIONS OF DEPENDENTS OF RETIRED AND DECEASED US MILITARY PERSONNEL - TOTAL	681	255	187	239
	A ARMY	298	174	67	57
	B NAVY-MARINE CORPS	184	18	106	60
	C AIR FORCE	199	63	14	122
15	ADMISSIONS OF DEPENDENTS OF OTHER UNIFORMED PERSONNEL (PHS, CG, NOAA) - TOTAL	45	0	39	6
16	ADMISSIONS OF ALL OTHER BENEFICIARIES - TOTAL	1 586	912	233	441

**TABLE 3.1
DEPARTMENT OF DEFENSE
SELECTED DATA CONCERNING MEDICAL CARE
PROVIDED AT FIXED MILITARY FACILITIES
FOR QUARTER ENDING JUNE 30, 1987**

OUTPATIENT VISITS - WORLDWIDE		DOD TOTAL	ARMY FACILITIES	NAVY FACILITIES	AIR FORCE FACILITIES
17	NUMBER OF OUTPATIENT VISITS - TOTAL	12 002 354	5 267 556	2 702 406	4 032 392
18	OUTPATIENT VISITS BY US ACTIVE DUTY UNIFORMED PERSONNEL - TOTAL	4 822 365	2 080 276	1 375 594	1 366 495
A	MILITARY - TOTAL	4 790 686	2 075 154	1 353 026	1 362 506
(1)	ARMY	2 041 574	1 966 595	20 114	54 865
(2)	NAVY-MARINE CORPS	1 403 212	52 044	1 317 039	34 129
(3)	AIR FORCE	1 345 900	56 515	15 873	1 273 512
B	OTHER UNIFORMED PERSONNEL (PHS CG NOAA) - TOTAL	31 679	5 122	22 568	3 989
19	OUTPATIENT VISITS BY RETIRED US UNIFORMED PERSONNEL - TOTAL	1 051 928	484 438	158 793	408 697
20	OUTPATIENT VISITS BY DEPENDENTS OF US ACTIVE DUTY UNIFORMED PERSONNEL - TOTAL	3 897 262	1 687 463	670 132	1 539 667
A	DEPENDENTS OF MILITARY PERSONNEL - TOTAL	3 869 759	1 679 446	661 276	1 529 037
(1)	ARMY	1 575 343	1 456 104	26 426	92 813
(2)	NAVY-MARINE CORPS	774 866	98 353	608 789	67 724
(3)	AIR FORCE	1 519 550	124 989	26 061	1 368 500
B	DEPENDENTS OF OTHER UNIFORMED PERSONNEL (PHS CG NOAA) - TOTAL	27 503	8 017	8 856	10 630

**TABLE 3.1
DEPARTMENT OF DEFENSE
SELECTED DATA CONCERNING MEDICAL CARE
PROVIDED AT FIXED MILITARY FACILITIES
FOR QUARTER ENDING JUNE 30, 1987**

OUTPATIENT VISITS - WORLDWIDE	DOD TOTAL	ARMY FACILITIES	NAVY FACILITIES	AIR FORCE FACILITIES
1. PATIENTS RECEIVED AT DEPARTMENT OF DEFENSE FIXED MILITARY FACILITIES	1,439,494	553,649	1,794,761	590,969
2. PATIENTS RECEIVED AT DEPARTMENT OF DEFENSE FIXED MILITARY FACILITIES	467,500	467,500	318,411	126,564
3. NUMBER OF VISITS PER PATIENT	1.573	1.160	5.296	9.138

**OUTPATIENT VISITS-PERCENT OF WORLDWIDE TOTAL
QUARTER ENDING JUNE 30, 1987**

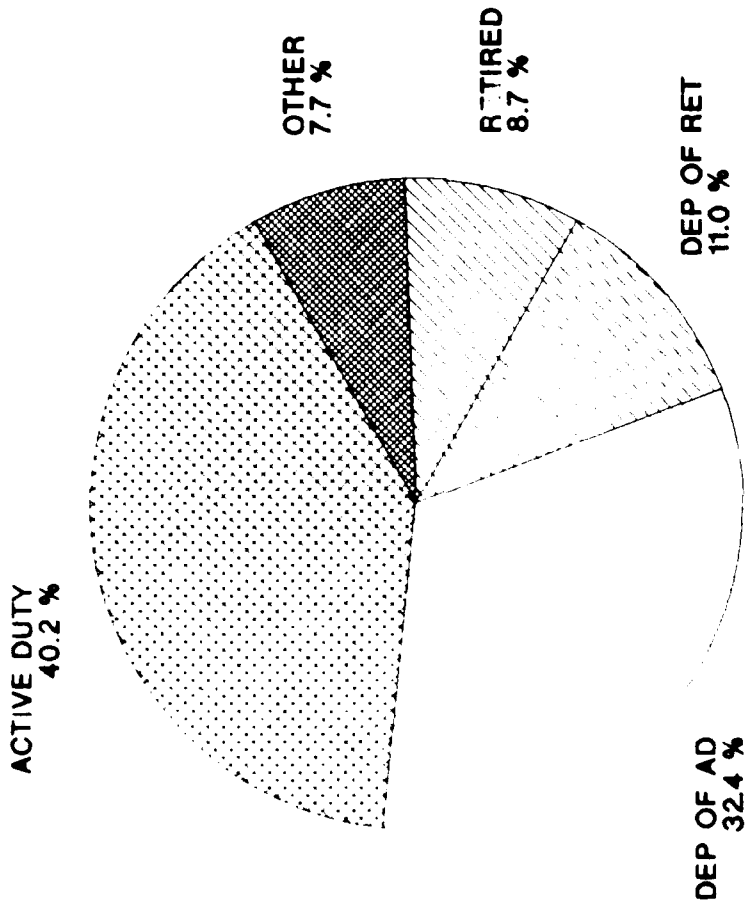


FIGURE 3.1

**TABLE 3.2
DEPARTMENT OF DEFENSE
SELECTED DATA CONCERNING MEDICAL CARE
PROVIDED AT FIXED MILITARY FACILITIES
FOR QUARTER ENDING JUNE 30, 1987**

OUTPATIENT VISITS - UNITED STATES		DOD TOTAL	ARMY FACILITIES	NAVY FACILITIES	AIR FORCE FACILITIES
17	NUMBER OF OUTPATIENT VISITS				
18	OUTPATIENT VISITS BY US ACTIVE DUTY UNIFORMED PERSONNEL	- TOTAL 10,083,875	4,226,590	2,457,551	3,399,734
A	MILITARY	- TOTAL 3,876,468	1,545,881	1,253,416	1,077,171
(1)	ARMY	- TOTAL 3,845,740	1,540,781	1,231,538	1,073,421
(2)	NAVY-MARINE CORPS	1,502,615	1,450,946	17,084	34,585
(3)	AIR FORCE	1,278,757	47,625	1,205,088	26,044
B	OTHER UNIFORMED PERSONNEL (PHS CG NOAA)	1,064,368	42,210	9,366	1,012,792
19	OUTPATIENT VISITS BY RETIRED US UNIFORMED PERSONNEL	- TOTAL 30,728	5,100	21,878	3,750
20	OUTPATIENT VISITS BY DEPENDENTS OF US ACTIVE DUTY UNIFORMED PERSONNEL	- TOTAL 1,022,981	471,136	152,765	399,080
A	DEPENDENTS OF MILITARY PERSONNEL	- TOTAL 3,077,311	1,255,927	583,345	1,238,039
(1)	ARMY	- TOTAL 3,050,762	1,247,916	574,930	1,227,916
(2)	NAVY-MARINE CORPS	1,144,356	1,055,334	21,704	67,318
(3)	AIR FORCE	694,922	94,108	539,444	61,370
B	DEPENDENTS OF OTHER UNIFORMED PERSONNEL (PHS CG NOAA)	1,211,484	98,474	13,782	1,099,228
	- TOTAL	26,549	8,011	8,415	10,123

**TABLE 3.2
DEPARTMENT OF DEFENSE
SELECTED DATA CONCERNING MEDICAL CARE
PROVIDED AT FIXED MILITARY FACILITIES
FOR QUARTER ENDING JUNE 30, 1987**

OUTPATIENT VISITS - UNITED STATES	DOD TOTAL	ARMY FACILITIES	NAVY FACILITIES	AIR FORCE FACILITIES
21 OUTPATIENT VISITS BY DEPENDENTS OF RETIRED AND DECEASED US UNIFORMED PERSONNEL	1 298 485	544 621	172 505	581 359
22 OUTPATIENT VISITS BY ALL OTHER BENEFICIARIES	808 630	409 025	295 520	104 085
23 NUMBER OF LIVE BIRTHS	19 775	7 755	4 310	7 710

**TABLE 3.3
DEPARTMENT OF DEFENSE
SELECTED DATA CONCERNING MEDICAL CARE
PROVIDED AT FIXED MILITARY FACILITIES
FOR QUARTER ENDING JUNE 30, 1987**

OUTPATIENT VISITS - OUTSIDE UNITED STATES	DOD TOTAL	ARMY FACILITIES	NAVY FACILITIES	AIR FORCE FACILITIES
07 NUMBER OF OUTPATIENT VISITS - TOTAL	1,918,479	1,040,966	244,855	632,658
08	-	-	-	-
OUTPATIENT VISITS BY US ACTIVE DUTY UNIFORMED PERSONNEL	945,897	534,395	122,178	289,324
A MILITARY	944,946	534,373	121,488	289,085
(1) ARMY	538,959	515,649	3,030	20,280
(2) NAVY-MARINE CORPS	124,455	4,419	111,951	8,085
(3) AIR FORCE	281,532	14,305	6,507	260,720
B OTHER UNIFORMED PERSONNEL (PHS, CG, NOAA)	951	22	690	239
09 OUTPATIENT VISITS BY RETIRED US UNIFORMED PERSONNEL - TOTAL	28,947	13,302	6,028	9,617
20 OUTPATIENT VISITS BY DEPENDENTS OF US ACTIVE DUTY UNIFORMED PERSONNEL	819,951	431,536	86,787	301,628
A DEPENDENTS OF MILITARY PERSONNEL	818,997	431,530	86,346	301,121
(1) ARMY	430,987	400,770	4,722	25,495
(2) NAVY-MARINE CORPS	79,944	4,245	69,345	6,354
(3) AIR FORCE	308,066	26,515	12,279	269,272
B DEPENDENTS OF OTHER UNIFORMED PERSONNEL (PHS, CG, NOAA)	954	6	441	507

**TABLE 3.3
DEPARTMENT OF DEFENSE
SELECTED DATA CONCERNING MEDICAL CARE
PROVIDED AT FIXED MILITARY FACILITIES
FOR QUARTER ENDING JUNE 30, 1987**

	OUTPATIENT VISITS - OUTSIDE UNITED STATES	DOD TOTAL	ARMY FACILITIES	NAVY FACILITIES	AIR FORCE FACILITIES
E1	OUTPATIENT VISITS BY DEPENDENTS OF RETIRED AND DECEASED US UNIFORMED PERSONNEL - TOTAL	25 809	9 228	6 971	9 610
E2	OUTPATIENT VISITS BY ALL OTHER BENEFICIARIES - TOTAL	97 875	52 505	22 891	22 479
E3	NUMBER OF LIVE BIRTHS - TOTAL	5 257	2 849	980	1 428

GLOSSARY

Admission. An admission is the act of placing an individual under treatment or observation in a medical center or a hospital. The day of admission is the day on which the medical center or hospital makes a formal acceptance of the patient who is to be provided with room, board, and continuous nursing service in an area of the hospital where patients normally stay at least overnight. If both an admission and discharge occur on the same day, then that day is considered as a day of admission and shall be counted as one occupied bed day. The admission of a newborn is deemed to occur at time of birth.

Live Births. A live birth is the complete expulsion or extraction from its mother of a product of conception, irrespective of the duration of pregnancy which after such separation, breathes or shows any other evidence of life such as beating of the heart, pulsation of the umbilical cord, or definite movement of voluntary muscles, whether or not the umbilical cord has been cut, or the placenta is attached; each such product of such a birth is considered liveborn.

Occupied Bed. A bed assigned as of midnight to a patient, to include a patient on pass or liberty not in excess of 72 hours, and any bassinets assigned to a newborn infant whose mother has been discharged from the hospital. The definition excludes: any bed assigned to a patient subsisting out, on leave, or absent without leave, and any bed occupied by a transient patient.

Operating Bed. A bed that is currently set up and ready in all respects for the care of a patient. It must include supporting space, equipment and staff to operate under normal circumstances. Excluded are nursery bassinets and transient patients' beds.

Operating Bassinet. A bed designed for the care of an infant that is currently set up in the newborn nursery and ready in all respects for use. It must include support space, equipment and staff to operate under normal circumstances. Excluded are infant transporters.

Outpatient Visits. Visits made to each dispensary or separate, organized clinic of a fixed medical treatment facility for medical advice, examination, diagnosis, treatment, evaluation, consultation, or counseling, including visits by military patients who are excused from duty for medical reasons but who have not been admitted for inpatient care in a facility authorized beds for inpatient care and any visits made incident to complete physicals or flight physicals.

DATE
ILMED
88