

AD-A185 438

HEC-1 AND HEC-2 APPLICATIONS ON THE MICROCOMPUTER(U)
HYDROLOGIC ENGINEERING CENTER DAVIS CA H W DOTSON
AUG 87 HEC-TP-117

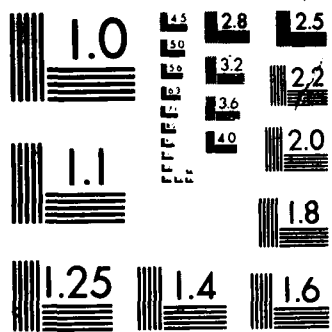
1/1

UNCLASSIFIED

F/G 12/6

NL





MICROCOPY RESOLUTION TEST CHART
NATIONAL BUREAU OF STANDARDS 1963-A

AD-A185 438



US Army Corps
of Engineers

The Hydrologic
Engineering Center

12

DTIC FILE COPY

HEC-1 and HEC-2 Applications on the Microcomputer

DTIC
ELECTE
OCT 08 1987
S D

DISTRIBUTION STATEMENT A
Approved for public release
Distribution Unlimited

Technical Paper No. 117

August 1987

02 10 1 360

Papers in this series have resulted from technical activities of the Hydrologic Engineering Center. Versions of some of these have been published in technical journals or in conference proceedings. The purpose of this series is to make the information available for use in the Center's training program and for distribution within the Corps of Engineers.

The findings in this report are not to be construed as an official Department of the Army position unless so designated by other authorized documents.

The contents of this report are not to be used for advertising, publication, or promotional purposes. Citation of trade names does not constitute an official endorsement or approval of the use of such commercial products.

REPORT DOCUMENTATION PAGE		READ INSTRUCTIONS BEFORE COMPLETING FORM
1. REPORT NUMBER Technical Paper No. 117	2. GOVT ACCESSION NO. ADP 117 138	3. REPORT NUMBER
4. TITLE (and Subtitle) HEC-1 and HEC-2 Applications on the Microcomputer		5. TYPE OF REPORT & PERIOD COVERED
7. AUTHOR(s) Harry Dotson		6. PERFORMING ORG. REPORT NUMBER
9. PERFORMING ORGANIZATION NAME AND ADDRESS U.S. Army Corps of Engineers The Hydrologic Engineering Center 609 Second Street, Davis, CA 95616		8. CONTRACT OR GRANT NUMBER(s)
11. CONTROLLING OFFICE NAME AND ADDRESS		10. PROGRAM ELEMENT, PROJECT, TASK AREA & WORK UNIT NUMBER
14. MONITORING AGENCY NAME & ADDRESS (if different from Controlling Office)		12. REPORT DATE August 1987
		13. NUMBER OF PAGES 6
		15. SECURITY CLASS. (of this report) Unclassified
		15a. DECLASSIFICATION/DOWNGRADING SCHEDULE
16. DISTRIBUTION STATEMENT (of this Report) Distribution of this paper is unlimited.		
17. DISTRIBUTION STATEMENT (of the abstract entered in Block 20, if different from Report)		
18. SUPPLEMENTARY NOTES Presented at the ASCE Symposium on Engineering Hydrology, 3-6 August 1987, Williamsburg, Virginia.		
19. KEY WORDS (Continue on reverse side if necessary and identify by block number) Microcomputers, HEC-1 Computer Program, HEC-2 Computer Program, Water Surface Profile Computations, Rainfall-Runoff Simulation, Computer Graphics, Full-Screen Editing, Menu Program.		
20. ABSTRACT (Continue on reverse side if necessary and identify by block number) The hydrologic Engineering Center (HEC) has developed versions of the HEC-1 Flood Hydrograph Package and the HEC-2 Water Surface Profiles Programs for MS/PC-DOS compatible microcomputers (PC). The increased speed, memory and storage capacity of the latest PCs make the use of these large FORTRAN programs highly practical in the PC environment. Typical tasks that are required when using these batch oriented programs include creating, checking and editing input data; executing the program;		

and summarizing and displaying the results. The HEC has developed a menu driven user interface or shell program to integrate several application programs, an editor and other utility programs to assist the user in accomplishing these tasks. The interface takes advantage of the unique capabilities and user friendliness found in the PC environment. In addition to the HEC-1 and HEC-2 programs, the integrated package includes a program (SUMPO) for creating summary tables of HEC-2 results, a program (PLOT2) that plots cross sections and water surface profiles, and a PC version of the Corps of Engineers editor (COED), which features full screen editing and on-line help screens and documentation. The application of these programs is described and demonstrated using the menu driven interface.

HEC-1 AND HEC-2 APPLICATIONS ON THE MICROCOMPUTER

Harry W. Dotson*, M.ASCE

ABSTRACT

The Hydrologic Engineering Center (HEC) has developed versions of the HEC-1 Flood Hydrograph Package and the HEC-2 Water Surface Profiles programs for MS/PC-DOS compatible microcomputers (PC). The increased speed, memory and storage capacity of the latest PCs make the use of these large FORTRAN programs highly practical in the PC environment.

Typical tasks that are required when using these batch oriented programs include creating, checking and editing input data; executing the program; and summarizing and displaying the results. The HEC has developed a menu driven user interface or shell program to integrate several application programs, an editor and other utility programs to assist the user in accomplishing these tasks. The interface takes advantage of the unique capabilities and user friendliness found in the PC environment. In addition to the HEC-1 and HEC-2 programs, the integrated package includes a program (SUMPO) for creating summary tables of HEC-2 results, a program (PLOT2) that plots cross sections and water surface profiles, and a PC version of the Corps of Engineers editor (COED), which features full screen editing and on-line help screens and documentation. The application of these programs is described and demonstrated using the menu driven interface.

INTRODUCTION

The Hydrologic Engineering Center (HEC) has converted several of their engineering application programs to the microcomputer (PC). In order to take advantage of the unique capabilities of the PC and to assist the user in working with these programs, the HEC has developed menu driven, user interfaces for several of their PC application programs. This paper describes the use and features of the menu driven interfaces developed for the Flood Hydrograph Package (HEC-1) and the Water Surface Profiles (HEC-2) programs.

*Hydraulic Engineer, Training Division, The Hydrologic Engineering Center, 609 Second Street, Davis, CA 95616

Presented at the ASCE Symposium on Engineering Hydrology, August 1987, Williamsburg, VA



A-1

HEC-1 APPLICATIONS WITH MENU1

The HEC-1 program menu interface (MENU1) allows the user to define input and output file names, create and edit input data files, run the HEC-1 program and display program output to the printer or console. The opening menu screen for MENU1, listing these choices, is shown on Figure 1.

```

                                HEC1 Package Menu
                                -----
                                1. Define Input/Output files
                                2. Create/Edit Input file
                                3. Run HEC1
                                4. Display Output to console
                                5. Exit to DOS

                                INPUT (specify)      OUTPUT CON
                                -----
                                Press number of desired option or ↑ ↓ with <ENTER>

```

Figure 1. MENU1 Opening Screen

Menu options shown are selected either by using the cursor keys or by simply entering the number of the selection desired. The first choice on the menu allows the user to define input and output file names. If this choice is selected a window appears on the screen so that the user can type in the names of the input and output files. An alternative to typing in the names is to enter a question mark (?) and a directory of file names in the current directory will appear in a window on the screen. The user can then select from this directory of file names by using the cursor keys. The second choice on the menu allows the user to create a new or edit an existing input data file using the Corps of Engineers editor (COED). COED has been modified by HEC so that it will perform not only as a powerful line editor but a full screen editor as well. COED also includes extensive, easy to use on-line documentation. Additional enhancements have also been added to allow right justified data entry in 10-8 column fields and program specific variable identification and description. This latter capability will be discussed in a subsequent section. The third choice on the menu is to run the HEC-1 program. If the input and output file names have been selected, the program will begin execution using these file names. If the file names have not been specified, the program will ask for these names prior to execution. Once

the HEC-1 program has finished execution, the user is returned to the menu. The fourth choice on the menu allows the user to display the HEC-1 program output file on the screen or send the output to the printer. This choice is made by pressing the space bar to toggle between the console and the printer. A utility program is used to display the output (or any file specified) to the screen and allows scrolling up and down, right and left, searching and many other features. A program called PROUT is used to send output to the printer with carriage control recognition. The last choice on the menu returns the user to DOS.

DATA ENTRY AND EDITING USING COED

A special feature has been added to the COED program that assists the user in preparing input data for specific HEC application programs. This feature includes variable name and field location prompting, automatic tab stops and right justification of input for each variable field, checking for inappropriate (non-numeric) data entry where applicable, and cursor position sensitive input variable definitions. These features are invoked while in the full screen mode by entering the Help Program command and the name of the program for which the input data applies. When the cursor is placed on a line having a two character record ID in the first two columns, the name of the variables for that record are shown in their appropriate position at the bottom of the screen. When the cursor is on a variable position and the Help Variable command is issued, the definition of that variable appears in a window on the screen. Figure 2 illustrates this feature for the variable ITIME in field three of the IT record for the HEC-1 program.

```

* . . . . .
* IT 03 ITIME
*
* Integer number for hour and minute of the
* beginning of the first time interval (e.g.,
* 1645 is input for 4:45 pm).
*
* (( Press the SPACE bar to continue ))--
* . . . . .
ID U
ID M
ID 25 26 NOV 1958 EVENT
IT 03 25NOV58 0600 58
IO 1 2
OU 17 14
PG SOCRM
IN 03 25NOV58 0/00
PI 0 00 0 01 0 04 0 02 0 06 0 09 0 14 0 19 0 11 0 10
PI 0 15 0 24 0 21 0 22 0 14 0 16 0 42 0 00 0 00 0 00
KRWAWLEY MIDDLE CREEK NEAR HAWLEY GAGE
BA 00 4
BF 00 0 1 1 01
PT SOCRM
IT MM MM I DATE I TIME M Q M DATE M TIME
Help F1 Insert Line Data Justify Caps-Lk Col:24 Line:11

```

Figure 2. COED Help Program and Help Variable Feature

HEC-2 APPLICATIONS USING MENU2

MENU2 is the menu driven user interface that assists the user when making HEC-2 program applications. MENU2 is similar to the MENU1 interface described previously. It allows the user to define input and output files, create and edit input data files, and display the results. The MENU2 package also uses COED and its associated Help Program and Help Variable capabilities specifically designed for the HEC-2 program. In addition, MENU2 interfaces three supplementary programs, called EDIT2, SUMPO, and PLOT2 that can be used with the HEC-2 program to check input data, create summary tables from HEC-2 results, and plot cross sections and water surface profiles, respectively. The space bar is used from menu item three to toggle the selection of the HEC-2 program or any of these three supplemental programs. Each of these additional features are described in the following paragraphs.

CHECKING HEC-2 INPUT DATA USING EDIT2

The EDIT2 program allows the user to check HEC-2 program input data for errors prior to execution. The program uses the HEC-2 input data file as its input and checks the entire file for fatal errors, as well as possible errors and inconsistencies. The optional ED record can be specified as the first record in the input to set EDIT2 program options for listing input, output format, and change the range of elevation differences that the program checks for in the cross-sectional data. An input listing, if not suppressed, and error messages are written to the specified output file. After the results of the EDIT2 run are reviewed, COED can be used to correct the HEC-2 input data prior to execution.

CREATING SUMMARY TABLES OF HEC-2 RESULTS USING SUMPO

The SUMPO program is used to create convenient summary tables using the computed results from HEC-2 multiple water surface profile runs. The user first runs the HEC-2 program, which creates a binary file of results. This binary file becomes the input file for the SUMPO program. The SUMPO program menus, which are similar to those described for MENU2, can be used to select standard, predefined summary tables or to create user defined summary tables by selecting the variables to be displayed. User selected summary table variable lists can be stored for later use. The screen including a window for selecting standard summary tables, which appears after selecting choice 2 from the opening SUMPO menu, is shown on Figure 3.

```

1. Define files & printer width
2. Select pre-defined summary tables

```

Cross-section output at bridges	100
Four cross-section output at bridges	105
Encroachment data	110
Channel improvement	120
Standard summary	150
Floodway data	200
Floodway insurance zone data	201
Recall saved variable table	(specify)
Return to previous menu	

INPUT: (specify)	OUTPUT: COM	PRINTER WIDTH: 132
<ENTER> to select summary table ; ↑ ↓ moves cursor		

Figure 3. SUMPO Standard Summary Table Selection Menu

PLOTTING CROSS SECTIONS AND PROFILES USING PLOT2

Graphical interpretations of cross-sectional data and water surface profile computations are an effective way of reviewing HEC-2 program input and results. The PLOT2 program provides the capability of creating plots of cross sections from the HEC-2 program input and profiles of water surface elevation or any of the other variables available from HEC-2 program results written to the binary file. The plots are created by using a series of menus similar to those described for MENU2 and SUMPO. The opening menu for PLOT2 present a choice of plotting profiles, plotting cross sections or exiting the program. If plot profiles is selected, a second menu appears giving the user the choice of defining profile options, defining plotting options, plotting the profile or returning to the main menu. This Plot Profiles Menu also allows the user to specify the names of the HEC-2 program input and binary files. If define profile options is selected, an additional menu is displayed. This menu allows the user to select the variable to be plotted, whether the invert profile is to be plotted, and the starting and ending cross section for the profile to be plotted. If the user selects the define plotting options choice from the Plot Profiles Menu, a menu is displayed that allows the definition of labels and legends, and specification of the plotting device to be used. Device choices are the color graphics adapter, the enhanced graphics adapter, or the HP 7475 pen plotter. Once the desired profile and plotting options have been selected, the user can select the begin plotting option from the Plot Profiles Menu to plot the defined profile.

The procedure for plotting cross sections is similar to that described for plotting profiles. Choice 2, plot cross-sections is selected from the PLOT2 opening menu. A second menu appears for defining cross-section and plotting options and specifying file names. The cross section options consist of whether to plot water surface, bridge geometry, n-values, encroachments or channel improvements on the cross section. The plotting option selection is for defining plot labels, grid and plotting device. An example cross-section plot is shown on Figure 4.

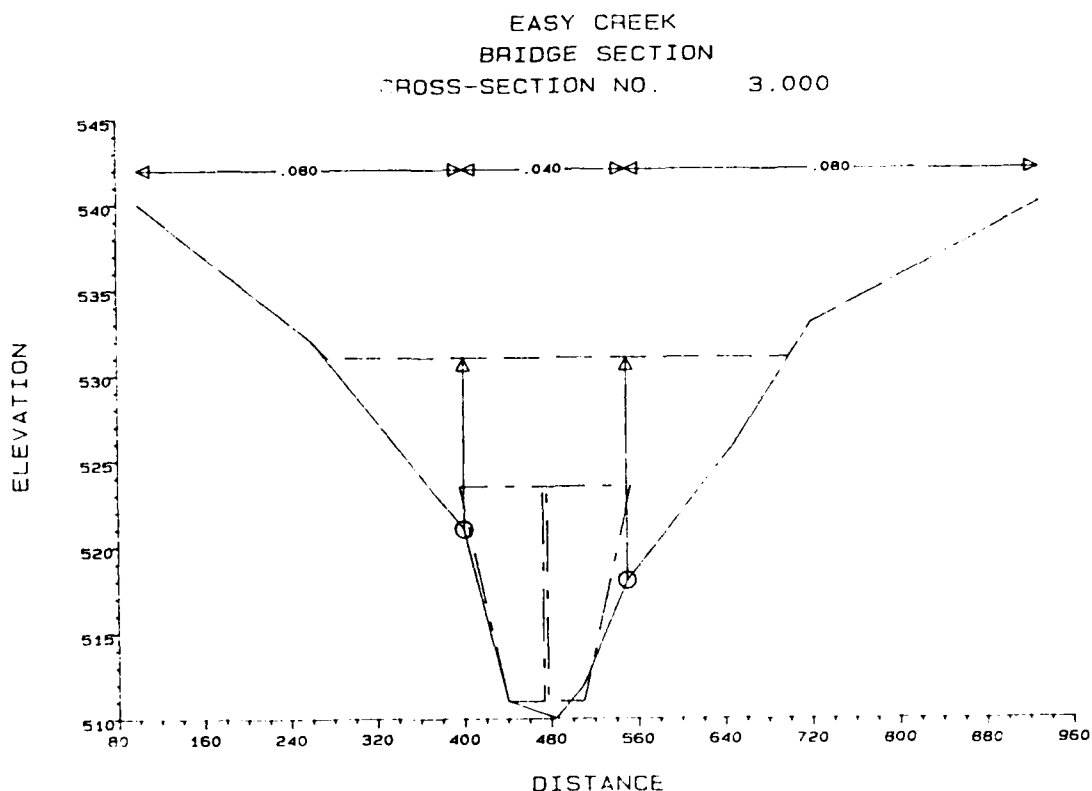


Figure 4. Example Cross-Section Plot Using PLOT2

REFERENCES

1. Bonner, Vernon R., 1987, "Computing Water Surface Profiles with HEC-2 on a Personal Computer," Draft Training Document No. 26, The Hydrologic Engineering Center, Davis, CA.
2. The Hydrologic Engineering Center, 1985, "HEC-1, Flood Hydrograph Package," Users Manual, Davis, CA.
3. The Hydrologic Engineering Center, 1987, "COED, Corps of Engineers Editor," User Document, Davis CA.
4. The Hydrologic Engineering Center, 1982, "HEC-2, Water Surface Profiles," Users Manual, Davis, CA.

TECHNICAL PAPERS (TP)

Technical papers are written by the staff of the HEC, sometimes in collaboration with persons from other organizations, for presentation at various conferences, meetings, seminars and other professional gatherings.

This listing includes publications starting in 1978.

<u>HEC NUMBER</u>	<u>TITLE</u>	<u>HEC PRICE</u>	<u>NTIS NUMBER</u>
		<u>\$2.00 Each</u>	
TP-52	Potential Use of Digital Computer Ground Water Models, D. L. Gundlach, Apr 78, 38 pp.		AD-A106 251
TP-53	Development of Generalized Free Surface Flow Models Using Finite Element Techniques, D. M. Gee and R. C. MacArthur, Jul 78, 21 pp.		AD-A106 252
TP-54	Adjustment of Peak Discharge Rates for Urbanization, D. L. Gundlach, Sep 78, 7 pp.		AD-A106 253
TP-55	The Development and Servicing of Spatial Data Management Techniques in the Corps of Engineers, R. P. Webb and D. W. Davis, Jul 78, 26 pp.		AD-A106 254
TP-56	Experiences of the Hydrologic Engineering Center in Maintaining Widely Used Hydrologic and Water Resource Computer Models, B. S. Eichert, Nov 78, 16 pp.		AD-A106 255
TP-57	Flood Damage Assessments Using Spatial Data Management Techniques, D. W. Davis and R. P. Webb, May 78, 27 pp.		AD-A106 256
TP-58	A Model for Evaluating Runoff-Quality in Metropolitan Master Planning, L. A. Roesner, H. M. Nichandros, R. P. Shubinski, A. D. Feldman, J. W. Abbott, and A. O. Friedland, Apr 74, 81 pp.		AD-A106 257

TECHNICAL PAPERS (TP) (Continued)

<u>HEC NUMBER</u>	<u>TITLE</u>	<u>HEC PRICE</u>	<u>NTIS NUMBER</u>
		<u>\$2.00 Each</u>	
TP-59	Testing of Several Runoff Models on an Urban Watershed, J. Abbott, Oct 78, 53 pp.		AD-A106 258
TP-60	Operational Simulation of a Reservoir System with Pumped Storage, G. F. McMahon, V. R. Bonner and B. S. Eichert, Feb 79, 32 pp.		AD-A106 259
TP-61	Technical Factors in Small Hydropower Planning, D. W. Davis, Feb 79, 35 pp.		AD-A109 757
TP-62	Flood Hydrograph and Peak Flow Frequency Analysis, A. D. Feldman, Mar 79 21 pp.		AD-A109 758
TP-63	HEC Contribution to Reservoir System Operation, B. S. Eichert and V. R. Bonner, Aug 79, 28 pp.		AD-A109 759
TP-64	Determining Peak-Discharge Frequencies in an Urbanizing Watershed: A Case Study, S. F. Daly and J. C. Peters, Jul 79, 15 pp.		AD-A109 760
TP-65	Feasibility Analysis in Small Hydropower Planning, D. W. Davis and B. W. Smith, Aug 79, 20 pp.		AD-A109 761
TP-66	Reservoir Storage Determination by Computer Simulation of Flood Control and Conservation Systems, B. S. Eichert, Oct 79, 10 pp.		AD-A109 762
TP-67	Hydrologic Land Use Classification Using LANDSAT, P. J. Cermak, A. D. Feldman and R. P. Webb, Oct 79, 26 pp.		AD-A109 763
TP-68	Interactive Nonstructural Flood-Control Planning, D. T. Ford, Jun 80, 12 pp.		AD-A109 764

TECHNICAL PAPERS (TP)(Continued)

<u>HEC NUMBER</u>	<u>TITLE</u>	<u>HEC PRICE</u>	<u>NTIS NUMBER</u>
		<u>\$2.00 Each</u>	
TP-69	Critical Water Surface by Minimum Specific Energy Using the Parabolic Method, B. S. Eichert, 1981, 15 pp.		AD-A951 599
TP-70	Corps of Engineers Experience with Automatic Calibration of a Precipitation-Runoff Model, D. T. Ford, E. C. Morris, and A. D. Feldman, May 80, 12 pp.		AD-A109 765
TP-71	Determination of Land Use from Satellite Imagery for Input to Hydrologic Models, R. P. Webb, R. Cermak, and A. D. Feldman, Apr 80, 18 pp.		AD-A109 766
TP-72	Application of the Finite Element Method to Vertically Stratified Hydrodynamic Flow and Water Quality, R. C. MacArthur and W. R. Norton, May 80, 12 pp.		AD-A109 767
TP-73	Flood Mitigation Planning Using HEC-SAM, D. W. Davis, Jun 80, 17 pp.		AD-A109 756
TP-74	Hydrographs by Single Linear Reservoir Model, J. T. Pederson, J. C. Peters, and O. J. Helweg, May 80, 17 pp.		AD-A109 768
TP-75	HEC Activities in Reservoir Analysis, V. R. Bonner, Jun 80, 10 pp.		AD-A109 769
TP-76	Institutional Support of Water Resource Models, J. C. Peters, May 80, 23 pp.		AD-A109 770
TP-77	Investigation of Soil Conservation Service Urban Hydrology Techniques, D. G. Altman, W. H. Espey, Jr. and A. D. Feldman, May 80, 14 pp.		AD-A109 771
TP-78	Potential for Increasing the Output of Existing Hydroelectric Plants, D. W. Davis and J. J. Buckley, Jun 81, 20 pp.		AD-A109 772

TECHNICAL PAPERS (TP) (Continued)

<u>HEC NUMBER</u>	<u>TITLE</u>	<u>HEC PRICE</u>	<u>NTIS NUMBER</u>
		<u>\$2.00 Each</u>	
TP-79	Potential Energy and Capacity Gains from Flood Control Storage Reallocation at Existing U. S. Hydropower Reservoirs, B. S. Eichert and V. R. Bonner, Jun 81, 18 pp.		AD-A109 787
TP-80	Use of Non-Sequential Techniques in the Analysis of Power Potential at Storage Projects, G. M. Franc, Jun 81, 18 pp.		AD-A109 788
TP-81	Data Management Systems for Water Resources Planning, D. W. Davis, Aug 81, 12 pp.		AD-A114 650
TP-82	The New HEC-1 Flood Hydrograph Package, A. D. Feldman, P. B. Ely and D. M. Goldman, May 81, 28 pp.		AD-A114 360
TP-83	River and Reservoir Systems Water Quality Modeling Capability, R. G. Willey, Apr 82, 15 pp.		AD-A114 192
TP-84	Generalized Real-Time Flood Control System Model, B. S. Eichert and A. F. Pabst, Apr 82, 18 pp.		AD-A114 359
TP-85	Operation Policy Analysis: Sam Rayburn Reservoir, D. T. Ford, R. Garland and C. Sullivan, Oct 81, 16 pp.		AD-A123 526
TP-86	Training the Practitioner: The Hydrologic Engineering Center Program, W. K. Johnson, Oct 81, 20 pp.		AD-A123 568
TP-87	Documentation Needs for Water Resources Models, W. K. Johnson, Aug 82, 16 pp.		AD-A123 558
TP-88	Reservoir System Regulation for Water Quality Control, R.G. Willey, Mar 83, 18 pp.		AD-A130 829
TP-89	A Software System to Aid in Making Real-Time Water Control Decisions, A. F. Pabst and J. C. Peters, Sep 83, 17 pp.		AD-A138 616

TECHNICAL PAPERS (TP)(Continued)

<u>HEC NUMBER</u>	<u>TITLE</u>	<u>HEC PRICE</u>	<u>NTIS NUMBER</u>
		<u>\$2.00 Each</u>	
TP-90	Calibration, Verification and Application of a Two-Dimensional Flow Model, D. M. Gee, Sep 83, 6 pp.		AD-A135 668
TP-91	HEC Software Development and Support, B. S. Eichert, Nov 83, 12 pp.		AD-A139 009
TP-92	Hydrologic Engineering Center Planning Models D. T. Ford and D. W. Davis, Dec 83, 17 pp.		AD-A139 010
TP-93	Flood Routing Through a Flat, Complex Floodplain Using A One-Dimensional Unsteady Flow Computer Program, J. C. Peters, Dec 83, 8 pp.		AD-A139 011
TP-94	Dredged-Material Disposal Management Model, D. T. Ford, Jan 84, 18 pp.		AD-A139 008
TP-95	Infiltration and Soil Moisture Redistribution in HEC-1, A. D. Feldman, Jan 84,		AD-A141 626
TP-96	The Hydrologic Engineering Center Experience in Nonstructural Planning, W. K. Johnson and D. W. Davis, Feb 84, 7 pp.		AD-A141 860
TP-97	Prediction of the Effects of a Flood Control Project on a Meandering Stream, D. M. Gee, Mar 84, 12 pp.		AD-A141 951
TP-98	Evolution in Computer Programs Causes Evolution in Training Needs: The Hydrologic Engineering Center Experience, V. R. Bonner, Jul 84, 20 pp.		AD-A145 601
TP-99	Reservoir System Analysis for Water Quality, J. H. Duke, D. J. Smith and R. G. Willey, Aug 84, 27 pp.		AD-A145 680

TECHNICAL PAPERS (TP)(Continued)

<u>HEC NUMBER</u>	<u>TITLE</u>	<u>HEC PRICE</u>	<u>NTIS NUMBER</u>
		<u>\$2.00 Each</u>	
TP-100	Probable Maximum Flood Estimation - Eastern United States, P. B. Ely and J. C. Peters, Jun 84, 5 pp.		AD-A146 536
TP-101	Use of Computer Program HEC-5 For Water Supply Analysis, R. J. Hayes and Bill S. Eichert, Aug 84, 7 pp.		AD-A146 535
TP-102	Role of Calibration in the Application of HEC-6 of HEC-6, D. Michael Gee, Dec 84, 19 pp.		AD-A149 269
TP-103	Engineering and Economic Considerations in Formulating Nonstructural Plans, M. W. Burnham, Jan 85, 16 pp.		A150 154
TP-104	Modeling Water Resources Systems for Water Quality, R. G. Willey, D. J. Smith and J. H. Duke, Feb 85, 10 pp.		AD-A154 288
TP-105	Use of a Two-Dimensional Flow Model to Quantify Aquatic Habitat, D. M. Gee and D. B. Wilcox, Apr 85, 10 pp.		AD-A154 287
TP-106	Flood-Runoff Forecasting with HEC1F, J. C. Peters and P. B. Ely, May 85, 7 pp.		AD-A154 286
TP-107	Dredged-Material Disposal System Capacity Expansion, D. T. Ford, Aug 85, 23 pp.		AD-A171 090
TP-108	Role of Small Computers in Two-Dimensional Flow Modeling, D. M. Gee, Oct 85, 6 pp.		AD-159 666
TP-109	One-Dimensional Model for Mud Flows, D. R. Schamber, and R. C. MacArthur, Oct 85, 6 pp.		AD-159 921
TP-110	Subdivision Froude Number, David H. Schoellhamer, John C. Peters, and Bruce E. Larock, Oct 85, 6 pp.		AD-A160 486
TP-111	HEC-5Q: System Water Quality Modeling, R. G. Willey, Jan 86, 13 pp.		AD-164 832
TP-112	New Developments in HEC Programs for Flood Control, V. R. Bonner, Aug 86, 18 pp.		AD-A172 495
TP-113	Modeling and Managing Water Resource Systems for Water Quality, R. G. Willey, Jan 86, 15 pp.		AD-A177065

- TP-114 Accuracy of Computed Water Surface Profiles
(Executive Summary), M. W. Burnham and
D. W. Davis, Dec 86, 24 pp. AD-A176334
- TP-115 Application of Spatial-Data Management Techni-
ques in Corps Planning, D. W. Davis and
D. T. Ford, Dec 86, 14 pp. AD-A176300
- TP-116 The Hydrologic Engineering Center's Activities
in Watershed Modeling, Gary W. Brunner, July 87,
14 pp.

END

11-87

DTIC