

ND-A186 117

EFFECT OF PEEL ANGLE ON PEEL FORCE(U) AKRON UNIV OH
INST OF POLYMER SCIENCE R 5 MILLER OCT 87 TR-10
N00014-85-K-0222

1/1

UNCLASSIFIED

F/G 11/1

NL



10

11

125

1

2

3

4

5

6

AD-A186 117

DTIC FILE COPY

Very faint, illegible text in the upper middle section of the page.

Very faint, illegible text in the middle section of the page.

Very faint, illegible text in the middle section of the page.

Very faint, illegible text in the lower middle section of the page.

Very faint, illegible text in the lower section of the page.

DTIC
ELECTE
OCT 16 1987
S H D

87 10-17-87

| REPORT DOCUMENTATION PAGE | | READ INSTRUCTIONS BEFORE COMPLETING FORM | |
|--|-------------------------------------|--|--|
| 1. REPORT NUMBER Technical Report No. 10 | 2. GOVT ACCESSION NO. AD-A186117 | 3. RECIPIENT'S CATALOG NUMBER | |
| 4. TITLE (and Subtitle) Effect of Peel Angle on Peel Force | | 5. TYPE OF REPORT & PERIOD COVERED Technical Report | |
| | | 6. PERFORMING ORG. REPORT NUMBER | |
| 7. AUTHOR(s) A. N. Gent and S. Kaang | | 8. CONTRACT OR GRANT NUMBER(s) N00014-85-K-0222 | |
| 9. PERFORMING ORGANIZATION NAME AND ADDRESS Institute of Polymer Science The University of Akron Akron, Ohio 44325 | | 10. PROGRAM ELEMENT, PROJECT, TASK AREA & WORK UNIT NUMBERS 4327-555 | |
| 11. CONTROLLING OFFICE NAME AND ADDRESS Office of Naval Research Power Program Arlington, VA 22217-5000 | | 12. REPORT DATE October 1987 | |
| | | 13. NUMBER OF PAGES 22 | |
| 14. MONITORING AGENCY NAME & ADDRESS (if different from Controlling Office) | | 15. SECURITY CLASS. (of this report) Unclassified | |
| | | 15a. DECLASSIFICATION/DOWNGRADING SCHEDULE | |
| 16. DISTRIBUTION STATEMENT (of this Report) According to attached distribution list. Approved for public release; distribution unrestricted. | | | |
| 17. DISTRIBUTION STATEMENT (of the abstract entered in Block 20, if different from Report) | | | |
| 18. SUPPLEMENTARY NOTES Submitted for publication in: Journal of Adhesion | | | |
| 19. KEY WORDS (Continue on reverse side if necessary and identify by block number) Adhesion, Adhesives, Bending, Detachment, Fracture energy, Fracture mechanics, Peel angle, Peeling, Separation, Strength | | | |
| 20. ABSTRACT (Continue on reverse side if necessary and identify by block number) Measurements of peel force P per unit width are reported for samples of three adhesive tapes, adhering to two different substrates. In all cases, the work of detachment per unit area of bonded interface was found to depend upon the angle θ of detachment, increasing as θ increases. This effect is | | | |

attributed to dissipation of energy in bending the tape away from the substrate at the line of detachment, to a greater degree as θ increases. Extrapolation to $\theta = 0$ is suggested as a simple way of minimizing contributions to the observed work of detachment that arise from bending an imperfectly-elastic adhering layer as it is peeled away from a flat rigid substrate. But at small peel angles the tape tends to stretch appreciably. Peeling at 45° is recommended to minimize both effects.



| | |
|--------------------|-------------------------------------|
| Accession For | |
| NTIS GRA&I | <input checked="" type="checkbox"/> |
| DTIC TAB | <input type="checkbox"/> |
| Unannounced | <input type="checkbox"/> |
| Justification | |
| By | |
| Distribution/ | |
| Availability Codes | |
| Avail and/or | |
| Special | |
| Dist: | |
| A-1 | |

1. Introduction

The peel test is commonly used to determine the strength of an adhesive joint (1-6). Scientifically, it has two distinct advantages compared to other test methods: bond failure proceeds at a controlled rate, and the peel force is a direct measure of the work of detachment (7-10). From a practical viewpoint, the peel test is valuable because it is simple to carry out and because it represents a mode of failure under service conditions, e.g., for adhesive tapes. However, variations in the way the test is carried out; in particular, variations in the angle α at which the adhering layer is detached, have been found to give quite different values for the work of detachment (see refs. 2 and 11, for example, and the results given below).

This anomalous behavior has been attributed to changes in the distribution of tensile stress set up in the interface on peeling at various angles, represented by an angle-dependent stress factor K (11). Alternatively, it has been attributed to a change in the mode of failure, from primarily shear failure at small peel angles to primarily tensile failure at large angles (2). Neither of these explanations seem fully acceptable; the former because within the limitations of stress analysis the factor K can be shown to be necessarily close to unity at all angles of peel (12), and the latter because failure of soft elastic solids under applied shear forces is commonly found to take place by tensile rupture, under the action of the major tensile stress

component (13, 14). Instead, an additional contribution to the work of detachment is thought to arise from energy expended irreversibly in bending the adhering layer away from the substrate, when the layer is imperfectly elastic (12, 15-17). This additional work will be greater at larger peel angles because the layer will be subjected to more severe bending then.

In order to illustrate the possible magnitude of the contribution from bending energy losses to the observed peel force, some experimental results are given here for three commercial adhesive tapes peeled away from rigid substrates at various angles. An extrapolation procedure is then proposed for determining the work of detachment in the absence of bending energy losses. The results are also compared with those obtained by other methods, which correspond to peeling detachment at low peel angles, or with only small bending strains set up in the detaching strip.

2. Theoretical considerations

The peel force \underline{P} per unit width of a detaching strip provides a continuous measure of the work \underline{G}_a expended in detachment per unit of bonded area. The relation between \underline{P} and \underline{G}_a is not generally a simple one, however. It can be derived from energy considerations, as follows.

Consider growth of the debond by a distance \underline{c} (Figure 1). The distance \underline{d} travelled by the force \underline{P} in its own direction is given by

$$d = c(1 + e - \cos \alpha) \quad (1)$$

from geometrical considerations, Figure 1, where e is the fractional elongation of the detached strip under the peel force P and α is the peel angle. Thus, the energy balance becomes (10):

$$P(1 + e - \cos \alpha) = (U + G_a) \quad (2)$$

where U denotes the energy expended per unit length in stretching the strip to an elongation e . (Note that it has not been assumed that the deformation process is a linear or an elastic one up to this point.)

We now make the simplifying assumption that the relation between the stretching force P and corresponding extension e is a linear one, with a slope, i.e., tensile stiffness of the adhering layer, of K , so that

$$U = P^2/2K. \quad (3)$$

Equation (2) then becomes:

$$G_a = P(1 - \cos \alpha) + (P^2/2K) \quad (4)$$

The second term, denoted \underline{G}_a hereafter, on the right-hand side of equation 4 is negligibly small when $e \approx 1 - \cos \alpha$. In the experiments described below, carried out with *three* commercial adhesive tapes, this condition was satisfied for values of peel angle α of 45° or greater. Thus, for relatively inextensible tapes or for peel angles greater than about 45° , the work of detachment is given by

$$G_a = P(1 - \cos \alpha) \quad (5)$$

to a good approximation. If the work \underline{G}_a of detachment is a property of the bond and independent of the way in which

detachment is effected, then we would expect the peel strength to be inversely proportional to $(1 - \cos \theta)$. But marked deviations are frequently found from this theoretical dependence. They are the subject of the present study.

4. Experimental details

Three commercial adhesive tapes were used in the experiments: A, a vinyl-backed electrical tape (3M Scotch brand No. 88), B, another similar tape (3M Scotch brand No. 35), and C, a window mounting tape with a stiff plastic backing (3M Catalog No. 2145). Because of the different elastic moduli of the materials used as backings the three tapes had quite different stiffnesses K in tension: about 3.5 kN/m for tapes A and B and about 85 kN/m for tape C, per unit width of tape (16). They were applied to two flat rigid substrates; a glass plate and a Teflon plate; and peeled off about 15 min later at various angles in such a way that the line of detachment advanced at a constant rate of 0.17 mm/s.

In order to reduce the amount of bending at the line of detachment some experiments were carried out with tape C as shown schematically in Figure 2, the tape being peeled off around a steel roller having a diameter of 12.7 mm. The tape was backed with a strip of 3M Scotch brand Magic transparent tape, Catalog No. 119, in these experiments, to prevent it adhering to the roller. The additional backing layer was found not to affect the peel strength of tape C, in other experiments. Weights were added to the roller in order to pull the tape into conformity with it at the line of detachment from the substrate. Values of the work of detachment G_a were calculated in these cases from the relation:

$$G_a = 2P - W \quad (6)$$

where \underline{P} is the peel force per unit width of tape and \underline{W} is the weight of the roller plus any added weights. In no case was the total force \underline{P} sufficiently large in the experiments with a roller to cause a significant extension of the tape.

All of the experiments were carried out at ambient temperature, about 24°C.

4. Experimental results

Values of the detachment energy \underline{G}_a for tapes B and C adhering to a glass substrate are plotted against the peel angle α in Figure 3. They are seen to depend strongly upon the peel angle, especially at large angles, rising from about 70 J/m² to about 230 J/m² for tape B and from about 240 J/m² to about 700 J/m² for tape C as the peel angle was increased from small values to 180°. Similar results were obtained with a Teflon substrate, as shown in Figure 4, although the values of \underline{G}_a were much smaller in this case: 40 - 140 J/m² for tape A and 35 - 90 J/m² for tape C.

Results obtained by peeling tape C away from a glass substrate around a rigid roller are shown in Figure 5. When the total weight was increased from the small weight of the roller itself, the detachment energy was found to decrease substantially, tending towards an asymptotic value of about 270 J/m² at large added weights, i.e., when the tape was forced to conform to the gentle curvature of the roller and the degree of bending was minimized. Thus, when the tape was

subjected to only slight bending during detachment, either by employing small peel angles or by peeling around a roller, then the work of detachment was relatively low. When the tape underwent severe bending, then the work of detachment was high.

A quantitative comparison of the values obtained for G_a under various test conditions is given in Table 1. In all cases, the work of detachment at 180° was found to be about three times as large as that at low peel angles. When peeling of tape C was carried out at 180° around a roller, however, then the work of detachment was reduced to the same value as at 0° . Thus, the degree of bending imposed on the peeling strip is a major factor in determining the magnitude of the work of detachment, as surmised previously (12, 15-17). It is responsible for large changes in the observed value as the peel angle is increased.

In order to remove the contribution of bending energy losses to the observed peel strength it seems advisable to adopt one of two measures. Either the peel angle should be chosen to be relatively small; say, 45° ; or peeling should be carried out using a roller to minimize the curvature of the peeled strip. This latter condition is not easily achieved, however, because the local curvature at the line of detachment is not necessarily equal to that of the roller unless the tape is forced to conform. And when large forces are applied to the tape, additional work G_a may be expended in stretching it, equation 4, and must be taken into account.

Similarly, at small peel angles the peel force is much greater, equation 5, and additional work G_a must again be allowed for. A suitable compromise, therefore, is to employ a reasonably small angle of peel, 45° , and to monitor the extension of the peeled strip to ensure that it does not exceed 10-15 per cent. Under these circumstances, the work G_a due to stretching is less than 20 per cent of the total work of detachment. Also, work expended in bending the strip appears to be generally small, as shown in Figures 3 and 4. Thus, the measured work is almost entirely due to simple detachment and can be compared directly with values obtained using other test methods which do not involve significant bending or stretching deformations of the detached material (16, 17). Good agreement is obtained in this way, Table 1.

5. Conclusions

In order to determine the work of detachment with only minor contributions from bending energy losses in the detaching layer, or in its backing, the peel angle should be small. But the peeling strip will tend to stretch significantly when the angle approaches 0° . A satisfactory compromise is to employ a peel angle of 45° , and to monitor the tensile strain set up in the peeling strip to ensure that it does not exceed 10 - 15 per cent.

References

1. J. J. Spiess, Adh. Treat. Engng., 27, 64 (1960).
2. D. H. Kaelble, Trans. Soc. Rheol., 4, 45 (1960).
3. D. H. Kaelble, Adhesives Age, 3, 47 (1961).
4. J. L. Gardner, J. Appl. Polymer Sci., 7, 643 (1963).
5. J. Johnston, Adhesives Age, 11(4), 26 (1968).
6. D. W. Aubrey, G. N. Weidling and T. Wong, J. Appl. Polymer Sci., 13, 2193 (1969).
7. R. S. Rivlin, Paint Technol., 9, 215 (1944).
8. T. Hata, Kobunshi Kagaku, 4, 67 (1947).
9. B. V. Deryagin and N. A. Krotova, Doklady Akad. Nauk SSSR., 61, 849 (1948).
10. P. B. Lindley, J. Instn. Rubber Industry, 5, 243 (1971).
11. D. H. Kaelble and C. L. Ho, Trans. Soc. Rheol., 18, 219 (1974).
12. A. N. Gent and G. R. Hamed, J. Adhesion, 7, 91 (1975).
13. W. G. Knauss, Int. J. Fract. Mech., 6, 183 (1970).
14. A. Ahagon, A. N. Gent, H. J. Kim and Y. Kumagai, Rubb. Chem. Technol., 48, 896 (1975).
15. A. N. Gent and G. R. Hamed, J. Appl. Polymer Sci., 21, 2817 (1977).
16. A. N. Gent and S. Kaang, J. Appl. Polymer Sci., 32, 4689 (1986).
17. A. N. Gent and L. H. Lewandowski, J. Appl. Polymer Sci., 33, 1567 (1987).

Table 1: Values of the work G_a of detachment under different test conditions.

| | $G_a(\alpha=0^\circ)^a$ (J/m ²) | $G_a(\alpha=90^\circ)$ (J/m ²) | $G_a(\alpha=180^\circ)$ (J/m ²) | $G_a(\alpha=180^\circ)$ using a roller (J/m ²) | G_a (small α) (16, 17) (J/m ²) |
|-----------|--|---|--|--|--|
| Tape A | | | | | |
| on glass | 50 | 80 | 150 | --- | 34 |
| Tape B | | | | | |
| on glass | 70 | 110 | 230 | --- | --- |
| Tape C | | | | | |
| on glass | 240 | 270 | 700 | 270 | 215 |
| Tape A | | | | | |
| on Teflon | 43 | 74 | 138 | --- | 36 |
| Tape B | | | | | |
| on Teflon | 18 | 47 | 98 | --- | 17 |
| Tape C | | | | | |
| on Teflon | 37 | 48 | 86 | --- | 34 |

^a obtained by extrapolation

Figure Captions

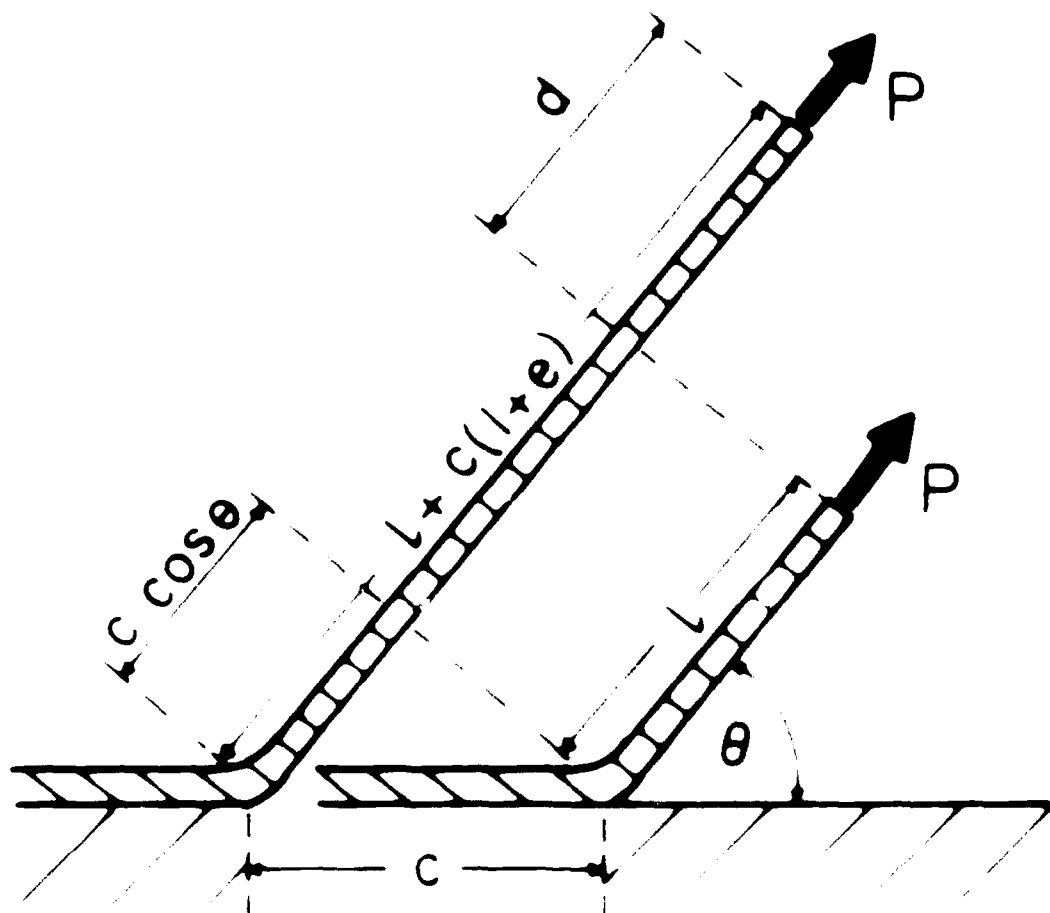
Figure 1: Mechanics of peeling

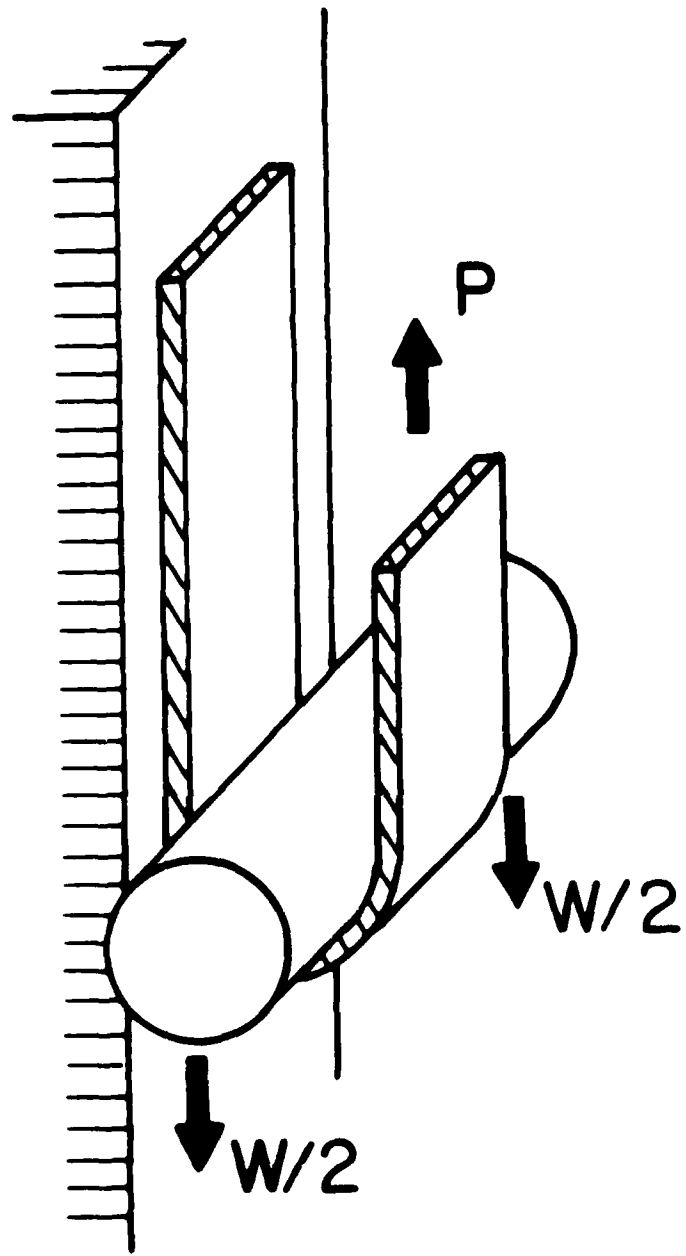
Figure 2: Peeling around a weighted roller. F is the peel force and W is the weight of the roller plus added weights, per unit width of tape

Figure 3: Work G_a of detachment vs peel angle for tapes B and C adhering to glass

Figure 4: Work G_a of detachment vs peel angle for tapes A and C adhering to Teflon

Figure 5: Work G_a of detachment of tape C from glass, peeled off around a weighted roller of total weight W per unit width of tape





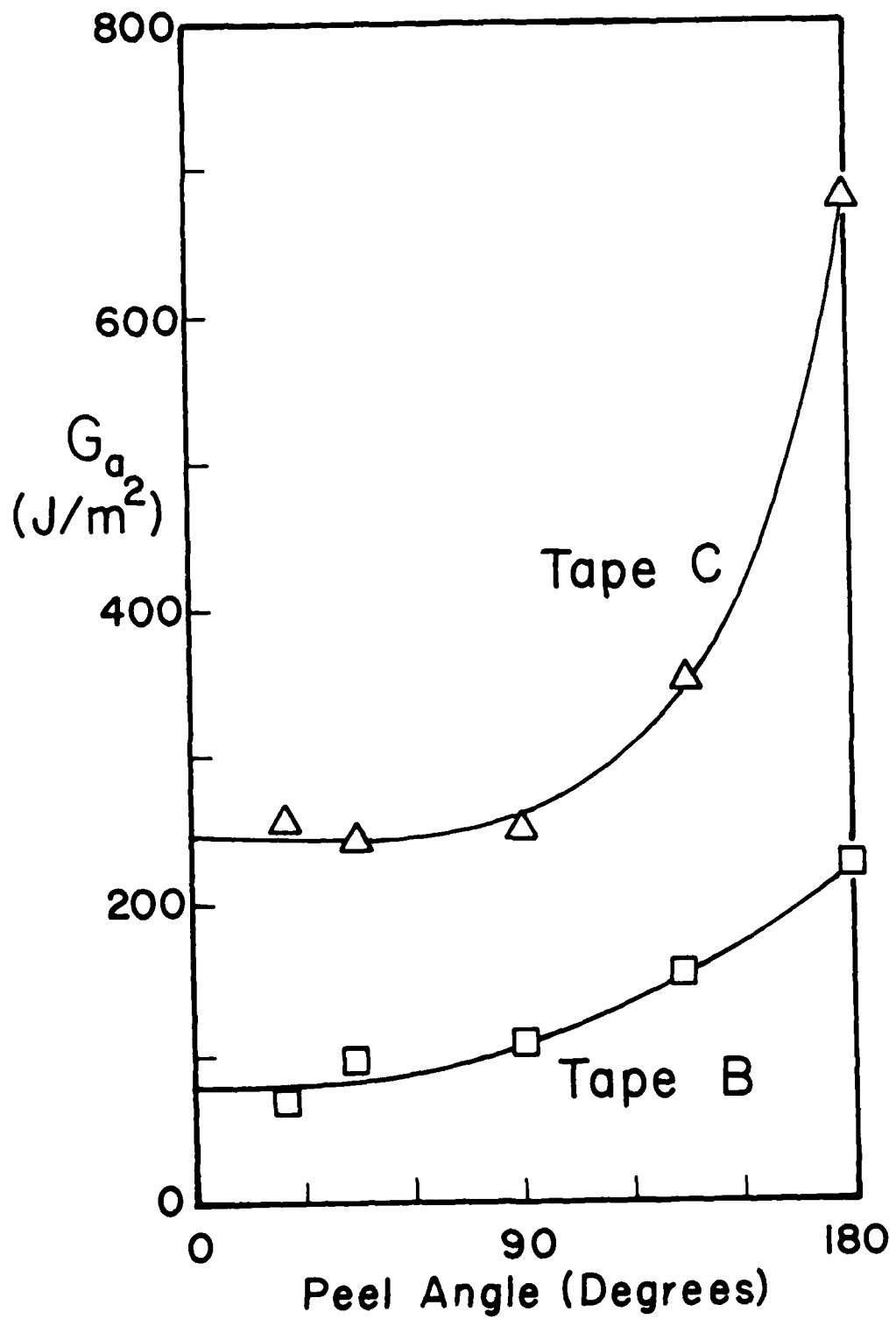


Figure 3.

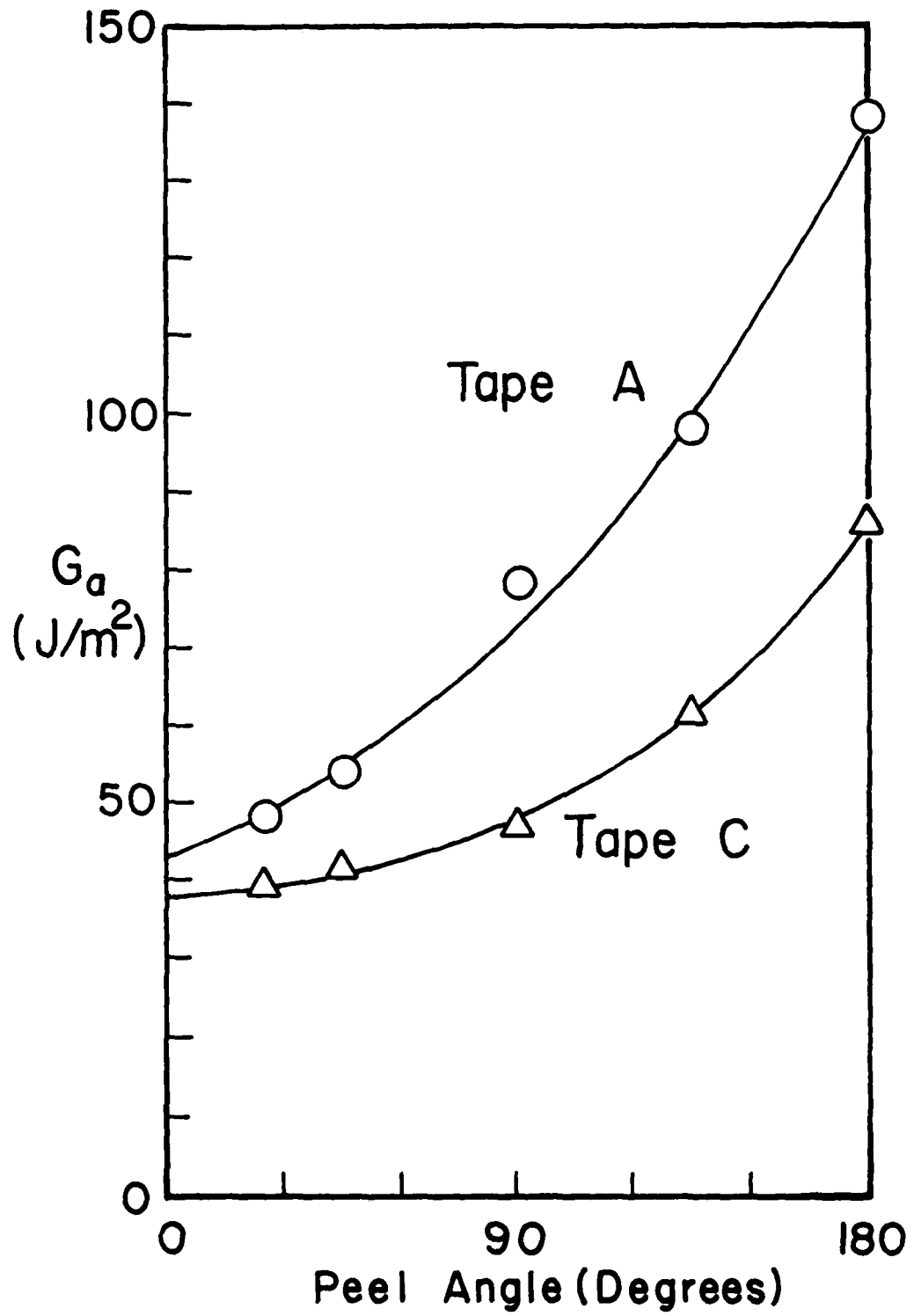


Figure 4.

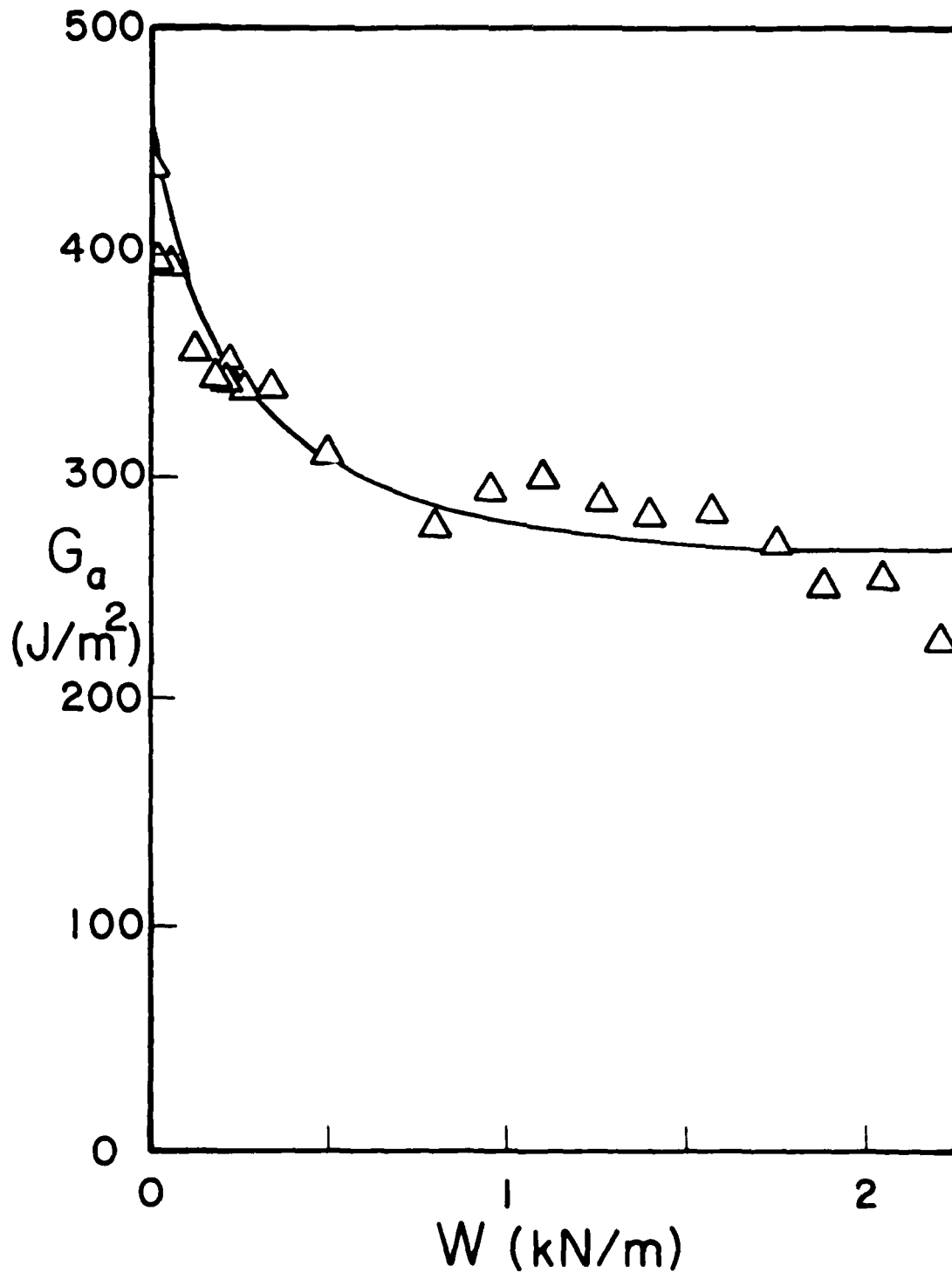


Figure 3.

(DYN)

DISTRIBUTION LIST

Dr. R.S. Miller
Office of Naval Research
Code 432P
Arlington, VA 22217
(10 copies)

Dr. J. Pastine
Naval Sea Systems Command
Code 06R
Washington, DC 20362

Dr. Kenneth D. Hartman
Hercules Aerospace Division
Hercules Incorporated
Alleghany Ballistic Lab
P.O. Box 210
Cumberland, MD 20502

Mr. Otto K. Heiney
AFATL-DLJG
Elgin AFB, FL 32542

Dr. Merrill K. King
Atlantic Research Corp.
5390 Cherokee Avenue
Alexandria, VA 22312

Dr. R.L. Lou
Aerojet Strategic Propulsion Co.
Bldg. 05025 - Dept 5400 - MS 167
P.O. Box 15699C
Sacramento, CA 95813

Dr. R. Olsen
Aerojet Strategic Propulsion Co.
Bldg. 05025 - Dept 5400 - MS 167
P.O. Box 15699C
Sacramento, CA 95813

Dr. Randy Peters
Aerojet Strategic Propulsion Co.
Bldg. 05025 - Dept 5400 - MS 167
P.O. Box 15699C
Sacramento, CA 95813

Dr. D. Mann
U.S. Army Research Office
Engineering Division
Box 12211
Research Triangle Park, NC 27709-1211

Dr. L.V. Schmidt
Office of Naval Technology
Code 07CT
Arlington, VA 22217

JHU Applied Physics Laboratory
ATTN: CPIA (Mr. T.W. Christian)
Johns Hopkins Rd.
Laurel, MD 20707

Dr. R. McGuire
Lawrence Livermore Laboratory
University of California
Code L-324
Livermore, CA 94550

P.A. Miller
736 Leavenworth Street, #6
San Francisco, CA 94109

Dr. W. Moniz
Naval Research Lab.
Code 6120
Washington, DC 20375

Dr. K.F. Mueller
Naval Surface Weapons Center
Code R11
White Oak
Silver Spring, MD 20910

Prof. M. Nicol
Dept. of Chemistry & Biochemistry
University of California
Los Angeles, CA 90024

Mr. L. Roslund
Naval Surface Weapons Center
Code R10C
White Oak, Silver Spring, MD 20910

Dr. David C. Sayles
Ballistic Missile Defense
Advanced Technology Center
P.O. Box 1500
Huntsville, AL 35807

(DYN)

DISTRIBUTION LIST

Mr. R. Geisler
ATTN: DY/MS-24
AFRPL
Edwards AFB, CA 93523

Naval Air Systems Command
ATTN: Mr. Bertram P. Sobers
NAVAIR-320G
Jefferson Plaza 1, RM 472
Washington, DC 20361

R.B. Steele
Aerojet Strategic Propulsion Co.
P.O. Box 15699C
Sacramento, CA 95813

Mr. M. Stosz
Naval Surface Weapons Center
Code R10B
White Oak
Silver Spring, MD 20910

Mr. E.S. Sutton
Thiokol Corporation
Elkton Division
P.O. Box 241
Elkton, MD 21921

Dr. Grant Thompson
Morton Thiokol, Inc.
Wasatch Division
MS 240 P.O. Box 524
Brigham City, UT 84302

Dr. R.S. Valentini
United Technologies Chemical Systems
P.O. Box 50015
San Jose, CA 95150-0015

Dr. R.F. Walker
Chief, Energetic Materials Division
DRSMC-LCE (D), B-3022
USA ARDC
Dover, NJ 07801

Dr. Janet Wall
Code 012
Director, Research Administration
Naval Postgraduate School
Monterey, CA 93943

Director
US Army Ballistic Research Lab.
ATTN: DRXBR-IBD
Aberdeen Proving Ground, MD 21005

Commander
US Army Missile Command
ATTN: DRSMI-RKL
Walter W. Wharton
Redstone Arsenal, AL 35898

Dr. Ingo W. May
Army Ballistic Research Lab.
ARRADCOM
Code DRXBR - IBD
Aberdeen Proving Ground, MD 21005

Dr. E. Zimet
Office of Naval Technology
Code 071
Arlington, VA 22217

Dr. Ronald L. Derr
Naval Weapons Center
Code 389
China Lake, CA 93555

T. Boggs
Naval Weapons Center
Code 389
China Lake, CA 93555

Lee C. Estabrook, P.E.
Morton Thiokol, Inc.
P.O. Box 30058
Shreveport, Louisiana 71130

Dr. J.R. West
Morton Thiokol, Inc.
P.O. Box 30058
Shreveport, Louisiana 71130

Dr. D.D. Dillehay
Morton Thiokol, Inc.
Longhorn Division
Marshall, TX 75670

G.T. Bowman
Atlantic Research Corp.
2511 Wellington Road
Gainesville, VA 22065

(DYN)

DISTRIBUTION LIST

R.E. Shenton
Atlantic Research Corp.
7511 Wellington Road
Gainesville, VA 22065

Mike Barnes
Atlantic Research Corp.
7511 Wellington Road
Gainesville, VA 22065

Dr. Lionel Dickinson
Naval Explosive Ordnance
Disposal Tech. Center
Code D
Indian Head, MD 20340

Prof. J.T. Dickinson
Washington State University
Dept. of Physics 4
Pullman, WA 99164-2814

M.H. Miles
Dept. of Physics
Washington State University
Pullman, WA 99164-2814

Dr. T.F. Davidson
Vice President, Technical
Morton Thiokol, Inc.
Aerospace Group
3340 Airport Rd.
Ogden, UT 84405

Mr. J. Consaga
Naval Surface Weapons Center
Code R-16
Indian Head, MD 20640

Naval Sea Systems Command
ATTN: Mr. Charles M. Christensen
NAVSEA-62R2
Crystal Plaza, Bldg. 6, Rm 806
Washington, DC 20362

Mr. R. Beauregard
Naval Sea Systems Command
SEA 64E
Washington, DC 20362

Brian Wheatley
Atlantic Research Corp.
7511 Wellington Road
Gainesville, VA 22065

Mr. G. Edwards
Naval Sea Systems Command
Code 62R32
Washington, DC 20362

C. Dickinson
Naval Surface Weapons Center
White Oak, Code R-13
Silver Spring, MD 20910

Prof. John Deutch
MIT
Department of Chemistry
Cambridge, MA 02139

Dr. E.H. deButts
Hercules Aerospace Co.
P.O. Box 27408
Salt Lake City, UT 84127

David A. Flanigan
Director, Advanced Technology
Morton Thiokol, Inc.
Aerospace Group
3340 Airport Rd.
Ogden, UT 84405

Dr. L.H. Caveny
Air Force Office of Scientific
Research
Directorate of Aerospace Sciences
Bolling Air Force Base
Washington, DC 20332

W.G. Roger
Code 5253
Naval Ordnance Station
Indian Head, MD 20640

Dr. Donald L. Ball
Air Force Office of Scientific
Research
Directorate of Chemical &
Atmospheric Sciences
Bolling Air Force Base
Washington, DC 20332

(DYN)

DISTRIBUTION LIST

Dr. Anthony J. Matuszko
Air Force Office of Scientific Research
Directorate of Chemical & Atmospheric
Sciences
Bolling Air Force Base
Washington, DC 20332

Dr. Michael Chaykovsky
Naval Surface Weapons Center
Code R11
White Oak
Silver Spring, MD 20910

J.J. Rocchio
USA Ballistic Research Lab.
Aberdeen Proving Ground, MD 21005-5066

B. Swanson
INC-4 MS C-346
Los Alamos National Laboratory
Los Alamos, New Mexico 87545

Dr. James T. Bryant
Naval Weapons Center
Code 3205B
China Lake, CA 93555

Dr. L. Rothstein
Assistant Director
Naval Explosives Dev. Engineering Dept.
Naval Weapons Station
Yorktown, VA 23691

Dr. M.J. Kamlet
Naval Surface Weapons Center
Code R11
White Oak, Silver Spring, MD 20910

Dr. Henry Webster, III
Manager, Chemical Sciences Branch
ATTN: Code 5063
Crane, IN 47522

Dr. A.L. Slafkosky
Scientific Advisor
Commandant of the Marine Corps
Code RD-1
Washington, DC 20380

Dr. H.G. Adolph
Naval Surface Weapons Center
Code R11
White Oak
Silver Spring, MD 20910

U.S. Army Research Office
Chemical & Biological Sciences
Division
P.O. Box 12211
Research Triangle Park, NC 27709

Dr. John S. Wilkes, Jr.
FJSRL/NC
USAF Academy, CO 80840

Dr. H. Rosenwasser
AIR-320R
Naval Air Systems Command
Washington, DC 20361

Dr. Joyce J. Kaufman
The Johns Hopkins University
Department of Chemistry
Baltimore, MD 21218

Dr. A. Nielsen
Naval Weapons Center
Code 385
China Lake, CA 93555

(DYN)

DISTRIBUTION LIST

K.D. Pae
High Pressure Materials Research Lab.
Rutgers University
P.O. Box 909
Piscataway, NJ 08854

Prof. Edward Price
Georgia Institute of Tech.
School of Aerospace Engineering
Atlanta, GA 30332

Dr. John K. Dienes
T-3, B216
Los Alamos National Lab.
P.O. Box 1663
Los Alamos, NM 87544

J.A. Birkett
Naval Ordnance Station
Code 5253K
Indian Head, MD 20640

A.N. Gent
Institute Polymer Science
University of Akron
Akron, OH 44325

Prof. R.W. Armstrong
University of Maryland
Dept. of Mechanical Engineering
College Park, MD 20742

Dr. D.A. Shockey
SRI International
333 Ravenswood Ave.
Menlo Park, CA 94025

Herb Richter
Code 385
Naval Weapons Center
China Lake, CA 93555

Dr. R.B. Kruse
Morton Thiokol, Inc.
Huntsville Division
Huntsville, AL 35807-7501

J.T. Rosenberg
SRI International
333 Ravenswood Ave.
Menlo Park, CA 94025

G. Butcher
Hercules, Inc.
P.O. Box 98
Magna, UT 84044

G.A. Zimmerman
Aerojet Tactical Systems
P.O. Box 13400
Sacramento, CA 95813

W. Waesche
Atlantic Research Corp.
7511 Wellington Road
Gainesville, VA 22065

Prof. Kenneth Kuo
Pennsylvania State University
Dept. of Mechanical Engineering
University Park, PA 16802

Dr. R. Bernecker
Naval Surface Weapons Center
Code R13
White Oak
Silver Spring, MD 20910

T.L. Boggs
Naval Weapons Center
Code 3891
China Lake, CA 93555

(DYN)

DISTRIBUTION LIST

| | |
|---|--|
| Dr. C.S. Coffey Naval Surface Weapons Center Code R13 White Oak Silver Spring, MD 20910 | J.M. Culver Strategic Systems Projects Office SSPO/SP-2731 Crystal Mall #3, RM 1048 Washington, DC 20376 |
| D. Curran SRI International 333 Ravenswood Avenue Menlo Park, CA 94025 | Prof. G.D. Duvall Washington State University Department of Physics Pullman, WA 99163 |
| E.L. Throckmorton Code SP-2731 Strategic Systems Program Office Crystal Mall #3, RM 1048 Washington, DC 23076 | Dr. E. Martin Naval Weapons Center Code 3858 China Lake, CA 93555 |
| R.G. Rosemeier Brimrose Corporation 7720 Belair Road Baltimore, MD 20742 | Dr. M. Farber 135 W. Maple Avenue Monrovia, CA 91016 |
| C. Gotzmer Naval Surface Weapons Center Code R-11 White Oak Silver Spring, MD 20910 | W.L. Egan Naval Surface Weapons Center White Oak, Bldg. 343 Silver Spring, MD 20910 |
| G.A. Lo 3251 Hanover Street B204 Lockheed Palo Alto Research Lab Palo Alto, CA 94304 | Defense Technical Information Center Bldg. 5, Cameron Station Alexandria, VA 22314 (12 copies) |
| R.A. Schapery Civil Engineering Department Texas A&M University College Station, TX 77843 | Dr. Robert Polvani National Bureau of Standards Metallurgy Division Washington, D.C. 20234 |
| Dr. Y. Gupta Washington State University Department of Physics Pullman, WA 99163 | Director Naval Research Laboratory Attn: Code 2627 Washington, DC 20375 (6 copies) |
| | Administrative Contracting Officer (see contract for address) (1 copy) |

END

12-87

DTIC