

AD-A186 644

UNDERSTANDING ALGEBRA EQUATION SOLVING STRATEGIES(U)
CARNEGIE-MELLON UNIV PITTSBURGH PA DEPT OF PSYCHOLOGY
K VANLEHN ET AL 86 JUL 87 PCG-2 N00014-86-K-0349

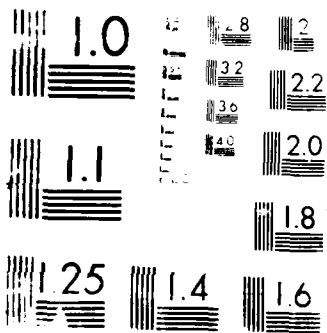
1/1

UNCLASSIFIED

F/G 12/1

NL





12

DTIC FILE COPY

AD-A186 644

**Understanding Algebra Equation
Solving Strategies**

Technical Report PCG-2

Kurt VanLehn and William Ball

Departments of Psychology and Computer Science
Carnegie-Mellon University
Schenley Park,
Pittsburgh, PA 15213 U.S.A.

**DEPARTMENT
of
PSYCHOLOGY**



DTIC
ELECTE
OCT 22 1987

ckd

Carnegie-Mellon University

DISTRIBUTION STATEMENT A
Approved for public release
Distribution Unlimited

87 10 13 023

12

Understanding Algebra Equation Solving Strategies

Technical Report PCG-2

Kurt VanLehn and William Ball

Departments of Psychology and Computer Science
Carnegie-Mellon University
Schenley Park,
Pittsburgh, PA 15213 U.S.A.

6 July 1987

Running head: Algebra strategies

DTIC
ELECTE
OCT 22 1987
S D

This research was supported by the Personnel and Training Research Programs, Psychological Sciences Division, Office of Naval Research, under Contract number N00014-86-K-0349. Approved for public release; distribution unlimited.

Abstract

A task analysis of linear algebraic equation solving is presented. The problem space is shown to have an elegant mathematical form. Several strategies for searching the problem space are delineated, and their properties discussed. The forward search strategy, which appears to be the one most commonly taught in high-school textbooks, tends to generate non-optimal solution paths. An operator-subgoaling search strategy tends to generate shorter paths. Bundy and Welham's waterfall loop strategy is shown to be a variant of operator-subgoaling that is more amenable for use by humans. This task analysis suggests that the waterfall loop strategy may be better for teaching to high-school students than the forward search strategy.



SEARCHED	
SERIALIZED	✓
INDEXED	
FILED	
APR 19 1968	
FBI - MEMPHIS	
A-1	

1. Introduction

This brief note presents an analysis of a small portion of high school algebra, the solving of linear equations in one variable. The analysis is based on the formal properties of the task, rather than data from human subjects. Two results are presented. First, the structure of the task domain is uncovered, and shown to have some elegant properties. Second, there is suggestive evidence that forward search, which appears to be the strategy most commonly taught in high school algebra, is a less efficient search strategy than operator subgoaling, a strategy based directed on the structure of the task domain, in that it tends to generate longer solution paths. This suggests that operator subgoaling may be a better strategy for teaching high school algebra students. However, operator subgoaling seems to require more cognitive resources of the student than forward search. Bundy and Welham's (1981) waterfall loop strategy, which is a type of operator subgoaling, is shown to offer reduced requirements for cognitive resources. It thus combines the advantages of short solution paths with low cognitive load.

Although these results are suggestive, empirical work is needed in order to build a case for changing the pedagogical practices of high school algebra. A tenuous, but still interesting conjecture is that teaching students the *structure* of the solution space, as described herein, may lead them to a better *understanding* of the process of solving algebra equations.

2. The problem space of simple algebraic equation solving

Solving an algebra equation can be viewed as search in a problem space (Newell & Simon, 1972). A problem space is defined by a set of states, a set of operators for moving from one state to another, an initial state, and a description for the desired final state. For algebra, a state is just an algebraic equation, and a operator is just an algebraic transformation, such as subtracting a term from both sides of the equation. The initial state is the given equation, e.g., $6-5(x+3)+7x = 3-x$. A final state is any equation that has just one occurrence of the variable and the variable is isolated, that is, it stands alone on the left or right side of the equation.

Different initial states (ie. different equations to be solved) engender different specific problem spaces. However, all the problem spaces in this task domain have the same basic topological form. This section discusses that form.

The form is hierarchical. We will define a hierarchy of state types, such that a state of type N is an equivalence class of states of type $N+1$. The lowest state type, state type 1, consists of the actual

equations. Thus, $1+x = 3$ and $x+1 = 3$ are distinct type 1 states. A type 2 state is an equivalence class of type 1 states that can be reached by the algebraic transformations for commutativity, associativity, arithmetic combination, reversing the sides of an equation, and simplifying a double unary minus. Thus, the following equations are all in the same type 2 class:

$$x+1 = 30/3$$

$$1+x = 30/3$$

$$1+x = 10$$

$$1+x = -(-10)$$

$$10 = 1+x$$

$$10 = x+1$$

$$11-1 = x+1$$

$$100^{-1/2} = x+1$$

Because there are infinitely many ways to express numbers as arithmetic expressions, there are infinitely many type 1 states in a type 2 state.

Type 3 states are defined as the equivalence class of type 2 states under the algebraic transformations that "do the same thing" to both sides of the equations, such as adding the same term to both sides of the equation. Such equivalence classes have an interesting structure. It is easiest to discuss it with the aid of several simple examples.

Figure 1 shows eight type 2 states that constitute a type 3 state. They are arranged in a cube in order to show the relationships among them. The edges that are parallel to the horizontal axis are represent the operations of multiplying or dividing by a . The vertical axis edges represent multiplying or dividing by b . The remaining edges represent multiplying or dividing by c . The diagonals of the cube (not drawn) correspond to inverting both sides of the equation.

Figure 2 displays another type 3 state, where the equations are related by adding and subtracting from both sides. The edges represent adding and subtracting by, respectively, a , b or c . The diagonals represent negating both sides of the equation.

In general, all equations formed from three atomic subexpressions and an invertible binary operator will engender a type 3 state that has either type 2 states arranged in a cube. However, if the subexpressions are not atomic, but are themselves expressions, then a type 3 state consists of two or more cubes that

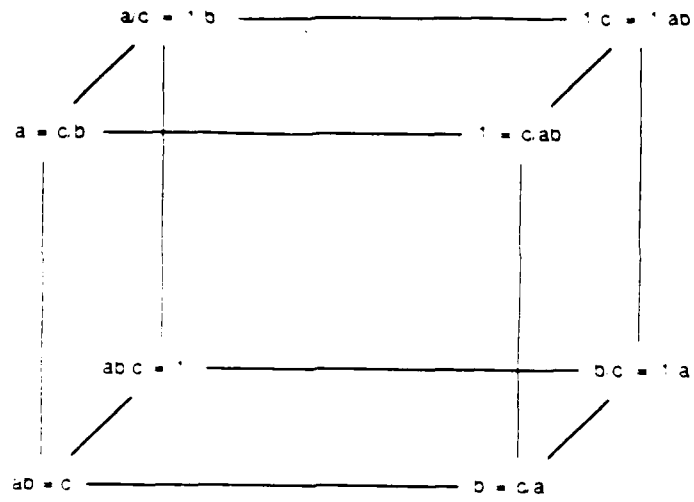


Figure 1: Type 3 state for multiplication and division

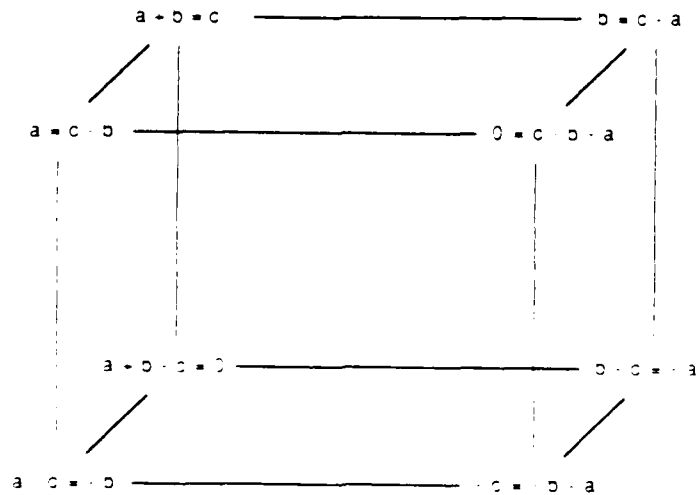


Figure 2: Type 3 state for addition and subtraction

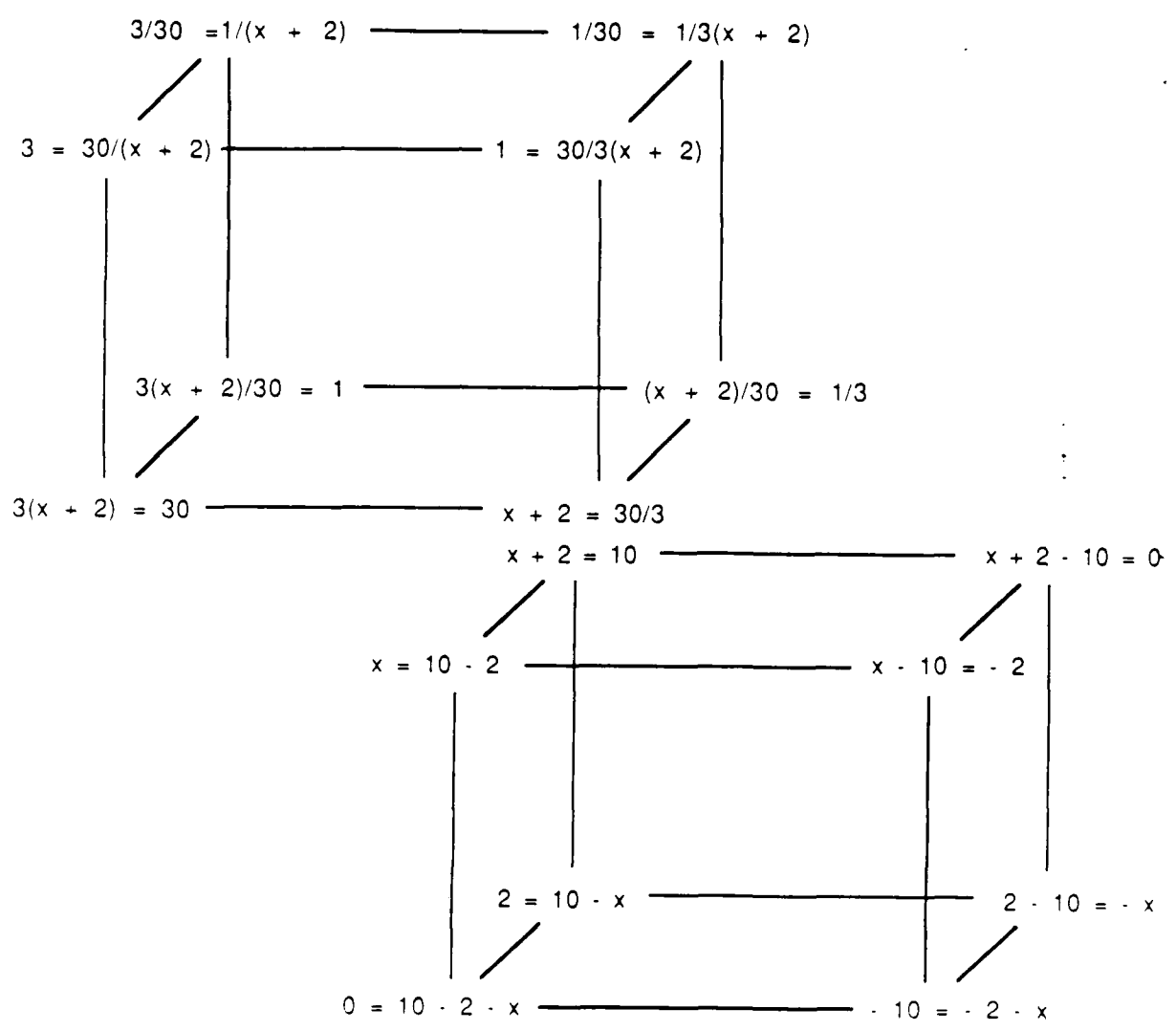


Figure 3: Type 3 state for the equation $3(x+1) = 30$.

share vertices. Figure 3 illustrates such a state for the equation $3(x+1) = 30$. The upper cube treats the subexpression $(x+1)$ as atomic, while the bottom cube treats $3/30$ as atomic. The multiplication cube shares the vertex that stands for the equation $x+1 = 3/30$ with the addition cube. In general, there are three vertices in every cube that can be shared, viz. those where a subexpression that is treated as atomic relative to the cube's operations appears isolated on one side of the equality. When a subexpression is isolated, its operator is the top operator on one side of the equation, and thus can found a new "do it to both sides" cube.

In principle, one can add (or multiply, etc.) any expression to both sides of an equation. Thus, adding $234x$ to both sides of $2(x+1) = 30$ is legal. However, most algebra equations can be solved by applying both-sides operations using only subexpressions that appear in the equation. If we restrict the problem space by only allowing the both-sides operators to use subexpressions from the equation, then a type 3 state always consists of a set of one or more cubes, connected by shared vertices. With this restriction, a type 3 state has the following properties:

- All its constituent type 2 states are equations with exactly the same atomic terms (i.e., modulo arithmetic evaluation, which merges number together).
- Any atomic term can be isolated by operations that stay inside the type 3 state.

These properties follow directly from the fact that each operation neither destroys terms nor creates terms, and that all operations are invertible, given that the equations are linear equations.

These two properties together imply that if any equation in a type 3 state has a single occurrence of the variable, then they all do, and furthermore, that one of the type 2 equations has the variable isolated on one side of the equation. Thus, a type 3 state is a "final" state if it contains an equation with a single occurrence of the unknown. For example, the equation $3(x+1) = 30$ corresponds to a final type 3 state: mere "both sides" operations are all that is required to convert it to the desired form.

To put the property more generally, all the equations in the type 3 state have the same number of occurrences of the unknown variable. A type 3 state can be assigned a heuristic value equal to the number of occurrences of the unknown, and this value can be used to guide the search among type 3 states by always choosing operations reduce this value. This strategy is discussed further below.

The only way to change the set of atomic expressions in an equation is to use some form of distribution or its converse, combination. These operations are illustrated below:

$$x(a+b) = c \leftarrow \rightarrow ax+bx = c$$

$$c = (a+b)/x \leftarrow \rightarrow c = a/x+b/x$$

$$x^ax^b = c \leftarrow \rightarrow x^{a+b} = c$$

These distribution operations form the type 3 state transitions. Thus, the whole problem space for linear¹ algebra equation solving can be reduced dramatically to a problem space of type 3 states connected by type 3 operators, with the final type 3 state having just a single occurrence of the variable. This idea forms the basis of the operator subgoaling strategy, which is discussed in the next section.

3. Two search strategies

This section discusses two search strategies, then compares them. The first strategy derives from the problem space analysis presented above. The idea is to search through the type 3 states using a simple hill climbing strategy -- move to an adjacent type 3 state that minimizes the number of occurrences of the variable -- then search through the final type 3 state to find a final type 2 state.

Although this sounds quite simple, it is complicated by the fact that the combine-term operations, which are the operators used to move between type 3 states, require that the terms to be combined are cousins in the expression tree. That is, when the expression is viewed as an operator tree (see figure 4), the two occurrences of the variable must be direct descendents of sibling nodes. In the equation $3x+4x+4 = 7$ it is possible to coalesce the occurrences of the variable, but in the equation $3x+4(x+1) = 7$ it is not possible to apply the combine-terms operation. Thus the strategy requires *operator subgoaling*, wherein the solver adopts the new goal of transforming the equation into a form suitable for applying the combine-terms operator. In this case, the subgoal is to transform the subexpression $4(x+1)$ into a sum with x contained in one of its terms. This can be accomplished by applying the distribution operator, which corresponds to a transition between two adjacent type 3 states, both of which have same heuristic value. In some cases, the subgoal can be accomplished by staying inside the type 3 state, as when $3x = 7-4x$ is transformed to $3x+4x = 7$. Such subgoaling can become rather complicated. Because the dominant form of activity is operator subgoaling, this strategy is named *operator subgoaling*.

As mentioned earlier, final states can be specified as a conjunction of two properties: (1) there is one occurrence of the variable, and (2) it occurs isolated on the left or right side of the equation. The operator

¹The analysis can probably be extended to a much larger class of equations. Bundy and Weibham's (1981) equation solving system, which will be shown later to use a special case of this strategy, can solve rational polynomials containing trigonometric and hyperbolic functions.

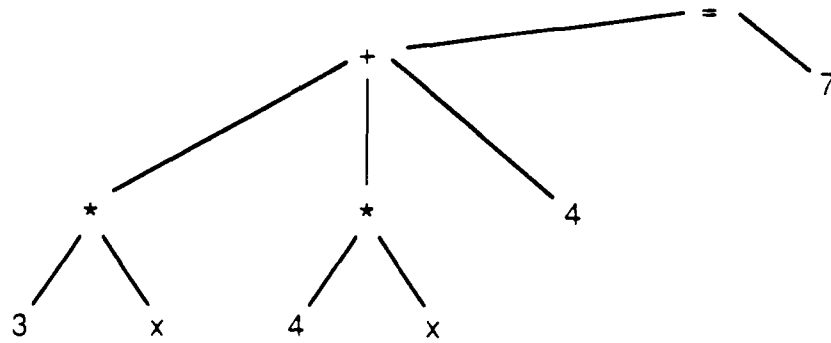


Figure 4: Expression tree for the equation $3x+4x+4=7$. The "*" means multiply.

subgoaling strategy achieves the single-occurrence goal first, then works on the isolation goal. The search strategy that seems to be taught in high school emphasizes the isolation subgoal. In the textbooks we have examined, students are taught to clear radicals, fractions, and parentheses first, then combine terms. (See figure 5 for one popular textbook's description of the strategy it teaches). This isolate-then-combine strategy has the advantage that it is easily implemented as a visually-cued forward search. The search heuristics are rules such as "If you see some parentheses, then use the distribution operator to remove them." Because the heuristics are cued by visual features of the equation, they may be easier to remember.

However, the forward search strategy leads to inefficient solutions in some cases:

<u>Forward Search Solution</u>	<u>Optimal Solution</u>
$3(x+2) = 30$	$3(x+2) = 30$
$3x+6 = 30$	$x+2 = 10$
$3x = 24$	$x = 8$
$x = 8$	

The optimal solution path in this case would be generated by the operator subgoaling strategy. The forward search's strategy is non-optimal because it moves out of the initial type 3 state, which is also a final state, and into an adjacent type 3 state, which is also a final state. In this case, it is better to stay in the initial type 3 state. Here are some more cases where the forward search strategy does poorly:

SOLVING AN EQUATION HAVING ONE VARIABLE

1. Clear the equation of fractions, if any, by multiplying both members by the L.C.D. of all fractions in the equations.
2. Remove parentheses.
3. Clear the equation of decimals, if any, by multiplying both members by the appropriate power of 10.

If it is a first-degree equation.

4. Collect all terms containing the variable so they are in the left member. Collect all other terms in the right member.
5. Simplify both members.
6. Divide each member by the coefficient of the variable.
7. Check your result by replacing the variable in the original equation.

If it is a second-degree equation,

4. Collect the terms so they are in the left member. The right member should be zero.
5. Simplify the left member.
6. Factor the left member.
7. Set each factor containing the variable equal to zero and solve each resulting equation.
8. Check your results by replacing the variable in the original equation.

Figure 5: A procedure from a popular high school textbook, Welchons et al. (1981), pg. 419.

$$4(3b+4)-3x = 147$$

Removing the parentheses is unnecessary

$$(3b+4)(3x+7) = -4-3b$$

Shortest path is to divide by $3b+4$

$$27(3x+7x+9) = 102$$

Shortest path is to divide out the 27 first

We believe that it can be shown that the operator subgoalting strategy always produces shorter solution paths than forward search, or a path of equal length. This belief is based mostly on our inability to find a counterexample. Further work is needed on this important question.

4. Comparing the two strategies

For human solvers, it is important to find shorter paths, but not so much because it saves time, but rather because it reduces the chance of error. Experienced solvers make most of their errors during the execution of operations, as opposed to using incorrect or inappropriate operations (Lewis, 1981). The fewer the operations needed to achieve a solution, the less chance of error.

However, shortness of path is not the only relevant criterion upon which a search strategy should be chosen. The strategy should be easy to use and easy to learn. The operator subgoalting strategy may not be particularly easy to use, because it seems to require a goal stack. That is, the solvers must remember what goal they were working on so that they can resume working on it when they get done with the subgoal. The extra memory load of maintaining a goal stack may make the operator subgoalting strategy more difficult to use than the forward search strategy, which requires no goal stack because its selection of operators is determined entirely by the current state.

The waterfall loop strategy (Bundy & Welham, 1981) offers the best of both strategies. It is essentially an operator subgoalting strategy, which means that it tends to generate optimal solution paths, but it is implemented by several heuristics that are driven almost entirely by the current state, thus minimizing potential memory load. The waterfall loop strategy has three "meta" rules:

- *Isolation*: If the equation has just one occurrence of the variable, then apply a both-sides operator appropriate to the arithmetic operation that is the root of the expression tree on the side of the equation containing the variable.
- *Combination*: If the equation has two occurrences of the variable that are cousins in the tree, then combine them.
- *Attraction*: If the equation has multiple, non-cousin occurrences of the variable, select two that are nearest in the tree, and apply a transformation that will make them nearer.

The first of these meta-rules that matches the equation is fired, then the loop repeats on the new

equation. That is, control falls through to the rule that matches, then loops back.

The waterfall loop strategy has the same goal structure as the operator subgoaling strategy. Isolation and combination are the top level goals of algebra equation solving, and attraction is a subgoal of combination. The waterfall loop differs from operator subgoaling in that it uses no goal stack as temporary state for its processing. It is driven entirely by the appearance of the equation. So it too is a visually cued, forward search strategy. But its *design* makes it a form of operator subgoaling.

The waterfall loop therefore combines the best properties of both forward search and operator subgoaling. It tends to generate optimal solution paths, and it is visually cued. The differences between it and the usual procedure taught in schools is that its cues concern the number of occurrences of the variable and their relative position in the equation tree. The forward search procedure is cued by the presence of large features, such as parentheses and radicals.

Obviously, these comments about ease of use must be viewed as suggestive only. Experimental work, preferably with both expert and novices human solvers, is needed to compare the two strategies.

5. Suggestions for further research

This brief note, although sparse on results, opens a number of interesting avenues for research. Two have been mentioned already: a formal demonstration of the optimality of the operator subgoaling strategy over the forward search strategy, and an empirical demonstration of its superior ease of use. Similarly, we need to experimentally compare the learnability of the two strategies.

A possibly more important question is whether this new view of algebraic equation solving as simple hillclimbing in the type 3 problem space allows students to truly *understand* the task domain. Certainly, we feel that we understand algebraic strategies better for having understood the structure of the problem space. Perhaps this view will help the students as well.

To put the suggestion in more concrete form, suppose one built an algebra equation solving system along the lines of AlgebraLand (Brown, 1983) that used a menu-driven interface to allow the student to select operations, which the system would then apply. AlgebraLand keeps track of the path the student follows and displays it; if the student backs up, then the display is a tree, otherwise it is a path. Brown claims that this may facilitate the acquisition of improved search strategies. This claim is consistent with research by Anderson and his colleagues (Anderson, Boyle & Yost, 1985; Anderson, Boyle & Reser,

1985), which shows that similar displays of solution trees seems to help geometry students learn strategies for finding proofs in plane geometry. The basic message from both sets of researchers is that displaying the solution path in a way that emphasizes its tacit structure helps students learn a search strategy based on that structure. Now, suppose that we displayed the search of an algebra student in a manner similar to the cubes of figures 1, 2 and 3. We conjecture that this display will help students come to understand algebra strategy in a new, more beneficial way.

References

- Anderson, J.R., Boyle, C.F. & Reiser, B. (1985). Intelligent tutoring systems. *Science*, 228(4698), 456-462.
- Anderson, J. R., Boyle, C., & Yost, G. (1985). The geometry tutor. In *Proceedings of Ninth International Joint Conference on Artificial Intelligence*. Los Altos, CA: Morgan-Kaufman, 1-7
- Brown, J.S. (1983). Process versus product: A perspective on tools for communal and informal electronic learning. In *Report from the learning lab: Education in the electronic age*. New York, NY: Educational Broadcasting Company.
- Bundy, A., and Welham, B. (1981). Using meta-level inference for selective application of multiple rewrite rule sets in algebraic manipulation. *Artificial Intelligence*, 16, 189-211.
- Lewis, C. (1981). Skill in algebra. In J. R. Anderson (Ed.), *Cognitive Skills and their Acquisition*. Hillsdale, NJ: Lawrence Erlbaum.
- Newell, A. & Simon, H. A. (1972). *Human Problem Solving*. Englewood Cliffs, NJ: Prentice-Hall.
- Weichens, A.M., Krickenberger, W.R., Pearson, H.R., Duffy, A.G., M& MacCaffery, J.M. (1981). *Algebra: Book 1*. Lexington, MA: Ginn.

Dr Phillip L Ackerman
 University of Minnesota
 Department of Psychology
 Minneapolis MN 55455

Dr Beth Adelson
 Department of Computer Science
 Tufts University
 Medford MA 02155

Dr Robert Ahlers
 Code N711
 Human Factors Laboratory
 Naval Training Systems Center
 Orlando FL 32813

Dr Ed Aiken
 Navy Personnel R&D Center
 San Diego CA 92152-6800

Dr Robert Aiken
 Temple University
 School of Business Administration
 Department of Computer and
 Information Sciences
 Philadelphia PA 19122

Dr James Algine
 University of Florida
 Gainesville FL 32605

Dr John Allen
 Department of Psychology
 George Mason University
 4400 University Drive
 Fairfax VA 22030

Dr William E Alley
 AFMRL/MOT
 Brooks AFB TX 78235

Dr John R Anderson
 Department of Psychology
 Carnegie-Mellon University
 Pittsburgh PA 15213

Dr Thomas H Anderson
 Center for the Study of Reading
 174 Children's Research Center
 51 Gerty Drive
 Champaign IL 61820

Dr Steve Andriole
 George Mason University
 School of Information
 Technology & Engineering
 4400 University Drive
 Fairfax VA 22030

Technical Director ARI
 5001 Eisenhower Avenue
 Alexandria VA 22333

Dr Alan Beddeley
 Medical Research Council
 Applied Psychology Unit
 15 Chaucer Road
 Cambridge CB2 2EF
 ENGLAND

Dr Patricia Beckett
 University of Colorado
 Department of Psychology
 Box 345
 Boulder CO 80309

Dr Eva L Baker
 UCLA Center for the Study
 of Evaluation
 145 Moore Hall
 University of California
 Los Angeles CA 90024

Dr Meryl S Baker
 Navy Personnel R&D Center
 San Diego CA 92152-6800

Dr Isaac Bejar
 Educational Testing Service
 Princeton NJ 08540

Leo Beltracchi
 United States Nuclear
 Regulatory Commission
 Washington DC 20555

Dr Mark H Bickhard
 University of Texas
 EDB 504 ED Psych
 Austin TX 78712

Dr John Black
 Teachers College
 Columbia University
 525 West 121st Street
 New York NY 10027

Dr Arthur S Blaiswes
 Code N711
 Naval Training Systems Center
 Orlando FL 32813

Dr Robert Blanchard
 Navy Personnel R&D Center
 San Diego CA 92152-6800

Dr R Darrell Bock
 University of Chicago
 NORC
 6030 South Ellis
 Chicago IL 60637

Dr Jeff Bonar
 Learning R&D Center
 University of Pittsburgh
 Pittsburgh PA 15260

Dr Richard Bröby
 NTSC Code 10
 Orlando FL 32751

Dr Jomilla H Braddock II
 Center for the Social
 Organization of Schools
 The Johns Hopkins University
 3505 North Charles Street
 Baltimore MD 21218

Dr Robert Breaux
 Code N-095R
 Naval Training Systems Center
 Orlando FL 32813

Dr Ann Brown
 Center for the Study of Reading
 University of Illinois
 51 Gerty Drive
 Champaign IL 61820

Commanding Officer
 CAPT Lorin W Brown
 MROTC Unit
 Illinois Institute of Technology
 3100 S Federal Street
 Chicago IL 60616-3793

Dr John S Brown
 XEROX Palo Alto Research
 Center
 3333 Coyote Road
 Palo Alto CA 94304

Dr John Bruer
 The James S McDonnell
 Foundation
 University Club Tower Suite 1610
 1034 South Brentwood Blvd
 St Louis MO 63117

Dr Bruce Buchanan
 Computer Science Department
 Stanford University
 Stanford CA 94305

Dr Patricia A Buller
 OERI
 555 New Jersey Ave NW
 Washington DC 20208

Dr Tom Caffery
 Dept of Psychology
 University of South Carolina
 Columbia SC 29208

Dr Joseph C Campione
 Center for the Study of Reading
 University of Illinois
 51 Gerty Drive
 Champaign IL 61820

Joanne Capper
 Center for Research into Practice
 1710 Connecticut Ave NW
 Washington DC 20009

Dr Susan Carey
 Harvard Graduate School of
 Education
 337 Gutman Library
 Appian Way
 Cambridge MA 02138

Dr Pat Carpenter
Carnegie-Mellon University
Department of Psychology
Pittsburgh, PA 15213

Dr John M Carroll
IBM Watson Research Center
User Interface Institute
P O Box 218
Yorktown Heights, NY 10598

LCDR Robert Carter
Office of the Chief
of Naval Operations
OP-01B
Pentagon
Washington, DC 20350-2000

Dr Alphonse Chapenis
8415 Bellona Lane
Suite 210
Buxton Towers
Baltimore, MD 21204

Dr Davide Charney
English Department
Penn State University
University Park, PA 16802

Dr Paul R Chatelier
OUSDRE
Pentagon
Washington, DC 20350-2000

Dr Michelene Chi
Learning R & D Center
University of Pittsburgh
3939 O'Hara Street
Pittsburgh, PA 15213

Dr L J Chmura
Computer Science and Systems
Code 7590
Information Technology Division
Naval Research Laboratory
Washington, DC 20375

Mr Raymond E Christal
AFHRL/MOE
Brooks AFB TX 78235

Dr William Clency
Stanford University
Knowledge Systems Laboratory
701 Welch Road, Bldg C
Palo Alto, CA 94304

Dr Charles Clifton
Tobin Hall
Department of Psychology
University of
Massachusetts
Amherst, MA 01003

Dr Allan M Collins
Bolt Beranek & Newman Inc
50 Moulton Street
Cambridge MA 02138

Dr Stanley Collyer
Office of Naval Technology
Code 222
800 M Quincy Street
Arlington VA 22217-5000

Dr Lynn A Cooper
Learning R&D Center
University of Pittsburgh
3939 O'Hara Street
Pittsburgh PA 15213

LT Judy Crookshanks
Chief of Naval Operations
OP-112G5
Washington DC 20370-2700

Phil Cunniff
Commanding Officer Code 75-2
Naval Undersea Warfare Engineering
Keyport, WA 98345

Dr Cary Czuchron
Intelligent Instructional Systems
Texas Instruments AI Lab
P O Box 660245
Dallas, TX 75266

Brian Dellman
3400 TTW/ITGXS
Lowry AFB CO 80230-5006

Dr Metairie Dehn
Department of Computer and
Information Science
University of Oregon
Eugene, OR 97403

Dr Gerald F DeJong
Artificial Intelligence Group
Coordinated Science Laboratory
University of Illinois
Urbana, IL 61801

Goery Delacote
Directeur de L Informatique
Scientifique et Technique
CNRS
15 Quai Anatole France
75700 Paris FRANCE

Dr Thomas E DeZern
Project Engineer AI
General Dynamics
PO Box 748
Fort Worth, TX 76101

Dr Andrea di Sessa
University of California
School of Education
Tolman Hall
Berkeley CA 94720

Dr R K Dismukes
Associate Director for Life Sciences
AFOSR
Bolling AFB
Washington DC 20332

Dr Stephanie Doan
Code 6021
Naval Air Development Center
Warminster, PA 18974-5000

Defense Technical
Information Center
Cameron Station Bldg 5
Alexandria VA 22314
Attn TC
(12 Copies)

Dr Thomas M Duffy
Communications Design Center
Carnegie-Mellon University
Schenley Park
Pittsburgh PA 15213

Dr Richard Duran
University of California
Santa Barbara, CA 93106

Edward E Eddowes
CNATRA N301
Naval Air Station
Corpus Christi TX 78419

Dr John Ellis
Navy Personnel R&D Center
San Diego CA 92252

Dr Jeffrey Elmas
University of California
San Diego
Department of Linguistics C-008
La Jolla, CA 92093

Dr Susan Embretson
University of Kansas
Psychology Department
426 Fraser
Lawrence KS 66045

Dr Randy Engle
Department of Psychology
University of South Carolina
Columbia SC 29208

Dr William Epstein
University of Wisconsin
W J Brogden Psychology Bldg
1202 W Johnson Street
Madison WI 53706

ERIC Facility-Acquisitions
4833 Rugby Avenue
Bethesda MD 20014

Dr K Anders Ericsson
University of Colorado
Department of Psychology
Boulder CO 80309

Dr Beatrice J Farr
Army Research Institute
5001 Eisenhower Avenue
Alexandria, VA 22333

Dr Marshall J Farr
Ferr-Sight Co
2520 North Vernon Street
Arlington, VA 22207

Dr Paul Feltozich
Southern Illinois University
School of Medicine
Medical Education Department
P O Box 3926
Springfield IL 62708

Mr Wallace Faurzeig
Educational Technology
Bolt Beranek & Newman
10 Moulton St
Cambridge MA 02238

Dr Gerhard Fischer
University of Colorado
Department of Computer Science
Boulder CO 80309

J D Fletcher
9931 Corsica Street
Vienna VA 22180

Dr Linda Flower
Carnegie-Mellon University
Department of English
Pittsburgh PA 15213

Dr Kenneth D Forbus
University of Illinois
Department of Computer Science
1304 West Springfield Avenue
Urbana IL 61801

Dr Barbara A Fox
University of Colorado
Department of Linguistics
Boulder CO 80309

Dr Carl H Frederiksen
McGill University
3700 McTavish Street
Montreal Quebec H3A 1Y2
CANADA

Dr John R Frederiksen
Bolt Beranek & Newman
50 Moulton Street
Cambridge MA 02138

Dr Michael Genesereth
Stanford University
Computer Science Department
Stanford, CA 94305

Dr Dedre Gentner
University of Illinois
Department of Psychology
603 E Daniel St
Champaign IL 61820

Lee Gladwin
Route 3 -- Box 225
Winchester VA 22601

Dr Robert Gleaser
Learning Research
& Development Center
University of Pittsburgh
3939 O Hara Street
Pittsburgh PA 15260

Dr Arthur M Glenberg
University of Wisconsin
W J Brogden Psychology Bldg
1202 W Johnson Street
Madison WI 53706

Dr Marvin D Glock
13 Stone Hall
Cornell University
Ithaca NY 14853

Dr Sam Glucksberg
Department of Psychology
Princeton University
Princeton NJ 08540

Dr Joseph Goguen
Computer Science Laboratory
SRI International
333 Ravenswood Avenue
Menlo Park CA 94025

Dr Susan Goldman
University of California
Santa Barbara CA 93106

Dr Daniel Gopher
Industrial Engineering
& Management
TECHNION
Haifa 32000
ISRAEL

Dr Sherrie Gott
AFHRL/MODJ
Brooks AFB, TX 78235

Jordan Grafman Ph D
2021 Lyttonsville Road
Silver Spring MD 20910

Dr Wayne Gray
Army Research Institute
5001 Eisenhower Avenue
Alexandria VA 22333

Dr Bert Green
Johns Hopkins University
Department of Psychology
Charles & 34th Street
Baltimore MD 21218

Dr James G Greeno
University of California
Berkeley CA 94720

Prof Edward Haertel
School of Education
Stanford University
Stanford CA 94305

Dr Henry M Halff
Halff Resources Inc
4918 33rd Road North
Arlington VA 22207

Janice Hart
Office of the Chief
of Naval Operations
OP-11MD
Department of the Navy
Washington, D C 20350-2000

Mr William Hartung
PEAM Product Manager
Army Research Institute
5001 Eisenhower Avenue
Alexandria VA 22333

Dr Wayne Herryey
Center for Learning Technology
Educational Development Center
55 Chapel Street
Newton, MA 02180

Prof John R Hayea
Carnegie-Mellon University
Department of Psychology
Schenley Park
Pittsburgh PA 15213

Dr Barbara Hayes-Roth
Department of Computer Science
Stanford University
Stanford, CA 95305

Dr Joan I Heller
505 Haddon Road
Oakland CA 94606

Dr Shelly Heller
Department of Electrical Engi-
neering & Computer Science
George Washington University
Washington DC 20052

Dr Jim Hollan
Intelligent Systems Group
Institute for
Cognitive Science (C-015)
UCSD
La Jolla CA 92093

Dr Melissa Holland
Army Research Institute for the
Behavioral and Social Science
5001 Eisenhower Avenue
Alexandria VA 22333

Ms Julia S Hough
Lawrence Erlbaum Associates
6012 Greene Street
Philadelphia PA 19144

Dr James Howard
Dept of Psychology
Human Performance Laboratory
Catholic University of
America
Washington DC 20064

Dr Earl Hunt
Department of Psychology
University of Washington
Seattle WA 98105

Dr Ed Hutchins
Intelligent Systems Group
Institute for
Cognitive Science (C-015)
UCSD
La Jolla CA 92093

Dr Dillon Inouye
WICAT Education Institute
Provo UT 84057

Dr Alice Isen
Department of Psychology
University of Maryland
College Park MD 21228

Dr R J K Jacob
Computer Science and Systems
Code 7590
Information Technology Division
Naval Research Laboratory
Washington DC 20375

Dr Zachary Jacobson
Bureau of Management Consulting
365 Laurier Avenue West
Ottawa Ontario N1A 0S5
CANADA

Dr Robert Jannarone
Department of Psychology
University of South Carolina
Columbia SC 29208

Dr Claude Janvier
Directeur, CIRADE
Université du Québec à Montréal
P O Box 6088 St A
Montréal Québec H3C 3P8
CANADA

Dr Robin Jeffries
Hewlett-Packard Laboratories
P O Box 10490
Palo Alto CA 94303-0971

Margaret Jerome
c/o Dr Peter Chandler
63 The Drive
Hove
Sussex
UNITED KINGDOM

Dr Douglas H Jones
Thatcher Jones Associates
P O Box 6640
10 Trafalgar Court
Lawrenceville NJ 08648

Dr Marcel Just
Carnegie Mellon University
Department of Psychology
Schenley Park
Pittsburgh PA 15213

Dr Ruth Kanfer
University of Minnesota
Department of Psychology
Elliott Hall
75 E River Road
Minneapolis MN 55455

Dr Milton S Katz
Army Research Institute
5001 Eisenhower Avenue
Alexandria VA 22333

Dr Dennis Kibler
University of California
Department of Information
and Computer Science
Irvine CA 92717

Dr David Kieras
University of Michigan
Technical Communication
College of Engineering
1223 E Engineering Building
Ann Arbor MI 48109

Dr Peter Kincaid
Training Analysis
& Evaluation Group
Department of the Navy
Orlando FL 32813

Dr Paula Kirk
Oakridge Associated Universities
University Programs Division
P O Box 117
Oakridge TN 37831-0117

Dr David Klahr
Carnegie-Mellon University
Department of Psychology
Schenley Park
Pittsburgh PA 15213

Dr Stephen Kosslyn
Harvard University
1236 William James Hall
33 Kirkland St
Cambridge MA 02138

Dr Kenneth Kotovsky
Department of Psychology
Community College of
Allegheny County
800 Allegheny Avenue
Pittsburgh PA 15233

Dr Benjamin Kuipers
University of Texas at Austin
Department of Computer Sciences
T S Painter Hall 328
Austin TX 78712

Dr Pat Langley
University of California
Department of Information
and Computer Science
Irvine CA 92717

M Diane Langston
Communications Design Center
Carnegie-Mellon University
Schenley Park
Pittsburgh PA 15213

Dr Jill Larkin
Carnegie-Mellon University
Department of Psychology
Pittsburgh PA 15213

Dr R W Lawler
ARI & S 10
5001 Eisenhower Avenue
Alexandria VA 22333 5600

Dr Alan M Lesgold
Learning Research and
Development Center
University of Pittsburgh
Pittsburgh PA 15260

Dr Jim Levin
Department of
Educational Psychology
210 Education Building
1310 South Sixth Street
Champaign IL 61820-6990

Dr John Levine
Learning R&D Center
University of Pittsburgh
Pittsburgh PA 15260

Dr Clayton Lewis
University of Colorado
Department of Computer Science
Campus Box 430
Boulder CO 80309

Library
Naval War College
Newport RI 02940

Library
Naval Training Systems Center
Orlando FL 32813

Dr Charlotte Linde
Structural Semantics
P O Box 707
Palo Alto CA 94320

Dr Marcia C Linn
Lawrence Hall of Science
University of California
Berkeley CA 94720

Dr Frederic M Lord
Educational Testing Service
Princeton NJ 08541

Dr Sandra P Marshall
Dept of Psychology
San Diego State University
San Diego CA 92182

Dr Richard E Meyer
Department of Psychology
University of California
Santa Barbara CA 93106

Dr Jay McClelland
Department of Psychology
Carnegie-Mellon University
Pittsburgh, PA 15213

Dr Joe McLachlan
Navy Personnel R&D Center
San Diego CA 92152-6800

Dr James S McMichael
Navy Personnel Research
and Development Center
Code 05
San Diego CA 92152

Dr Barbara Means
Human Resources
Research Organization
1100 South Washington
Alexandria VA 22314

Dr Arthur Melmed
U S Department of Education
724 Brown
Washington DC 20208

Dr George A Miller
Department of Psychology
Green Hall
Princeton University
Princeton NJ 08540

Dr James R Miller
MCC
9430 Research Blvd
Echelon Building #1 Suite 231
Austin TX 78759

Dr Mark Miller
Computer-Thought Corporation
1721 West Plano Parkway
Plano, TX 75075

Dr Andrew R Molnar
Scientific and Engineering
Personnel and Education
National Science Foundation
Washington DC 20550

Dr William Montague
NPRDC Code 13
San Diego CA 92152-6800

Dr Randy Munaw
Program Manager
Training Research Division
HUMARRO
1100 S Washington
Alexandria VA 22314

Dr Allen Munro
Behavioral Technology
Laboratories - USC
1045 S Elene Ave 4th Floor
Redondo Beach CA 90277

Dr T Niblett
The Turing Institute
36 North Menover Street
Glasgow G1 2AD Scotland
UNITED KINGDOM

Dr Richard E Nisbett
University of Michigan
Institute for Social Research
Room 5281
Ann Arbor MI 48109

Dr Mary Jo Nissen
University of Minnesota
N216 Elliott Hall
Minneapolis MN 55455

Dr A F Norcio
Computer Science and Systems
Code 7590
Information Technology Division
Naval Research Laboratory
Washington DC 20375

Dr Donald A Norman
Institute for Cognitive
Science C-015
University of California San Diego
La Jolla California 92093

Director Training Laboratory
NPRDC (Code 05)
San Diego CA 92152-6800

Director Manpower and Personnel
Laboratory
NPRDC (Code 06)
San Diego CA 92152-6800

Director Human Factors
& Organizational Systems Lab
NPRDC (Code 07)
San Diego CA 92152-6800

Library NPRDC
Code P201L
San Diego CA 92152-6800

Technical Director
Navy Personnel R&D Center
San Diego CA 92152-6800

Dr Harold F O'Neil Jr
School of Education - MPH 801
Department of Educational
Psychology & Technology
University of Southern California
Los Angeles, CA 90089-0031

Dr Michael Oberlin
Naval Training Systems Center
Code 711
Orlando FL 32813-7100

Dr Stellan Ohlsson
Learning R & D Center
University of Pittsburgh
3939 O'Hara Street
Pittsburgh PA 15213

Director Research Programs
Office of Naval Research
800 North Quincy Street
Arlington, VA 22217-5000

Office of Naval Research
Code 1133
800 N Quincy Street
Arlington VA 22217-5000

Office of Naval Research
Code 1142PS
800 N Quincy Street
Arlington VA 22217-5000

Director Technology Programs
Office of Naval Research
Code 12
800 North Quincy Street
Arlington, VA 22217-5000

Psychologist
Office of Naval Research
Branch Office, London
Box 39
FPO New York NY 09510

Special Assistant for Marine
Corps Matters
ONR Code 00MC
800 N Quincy St
Arlington VA 22217-5000

Psychologist
Office of Naval Research
Resident Representative
UCSD
University of California,
San Diego
La Jolla CA 92093-0001

Assistant for Planning MANTR,
OP 01B6
Washington DC 20370

Office of Naval Research
Code 1142CS
800 N Quincy Street
Arlington, VA 22217-5000
(6 Copies)

Office of Naval Research
Code 11R
800 N Quincy Street
Arlington, VA 22217-5000

Assistant for MPT Research
Development and Studies
OP 0187
Washington DC 20370

Dr Judith Orsano
Army Research Institute
5001 Eisenhower Avenue
Alexandria, VA 22333

CDR R T Parlette
Chief of Naval Operations
OP-112G
Washington DC 20370-2000

Dr James Paulson
Department of Psychology
Portland State University
P O Box 751
Portland, OR 97207

Dr Douglas Pearce
DCIEM
Box 2000
Downsview, Ontario
CANADA

Dr James W Pellegrino
University of California
Santa Barbara
Department of Psychology
Santa Barbara, CA 93106

Dr Virginia E Pendergrass
Code 711
Naval Training Systems Center
Orlando, FL 32813-7100

Dr Nancy Pennington
University of Chicago
Graduate School of Business
1101 E 58th St
Chicago, IL 60637

Military Assistant for Training and
Personnel Technology
OUSD (R & E)
Room 3D129, The Pentagon
Washington DC 20301-1080

Dr Ray Perez
ARI (PERI-11)
5001 Eisenhower Avenue
Alexandria, VA 22333

Dr David N Perkins
Educational Technology Center
337 Galtman Library
Appian Way
Cambridge, MA 02130

Dr Steven Pinker
Department of Psychology
E10-010
MIT
Cambridge, MA 02139

Dr Tjeerd Plomp
Twente University of Technology
Department of Education
P O Box 217
7500 AE ENSCHEDE
THE NETHERLANDS

Dr Martha Polson
Department of Psychology
Campus Box 346
University of Colorado
Boulder CO 80309

Dr Peter Polson
University of Colorado
Department of Psychology
Boulder CO 80309

Dr Michael I Posner
Department of Neurology
Washington University
Medical School
St Louis, MO 63110

Dr Joseph Psotka
ATTN PERI-1C
Army Research Institute
5001 Eisenhower Ave
Alexandria, VA 22333

Dr Mark D Reckese
ACT
P O Box 168
Iowa City IA 52243

Dr Lynne Reder
Department of Psychology
Carnegie-Mellon University
Schenley Park
Pittsburgh, PA 15213

Dr Wesley Reigan
AFHRL/MOD
Brooks AFB, TX 78235

Dr Fred Reif
Physics Department
University of California
Berkeley, CA 94720

Dr Lauren Resnick
Learning R & D Center
University of Pittsburgh
3939 O'Hara Street
Pittsburgh, PA 15213

Dr Gil Ricard
Mail Stop C04-14
Grumman Aerospace Corp
Bethpage, NY 11714

Mark Richer
1041 Lake Street
San Francisco, CA 94118

Dr Linda G Roberts
Science, Education and
Transportation Program
Office of Technology Assessment
Congress of the United States
Washington, DC 20510

Dr Andrew M Rose
American Institutes
for Research
1055 Thomas Jefferson St., NW
Washington, DC 20007

Dr David Rumlhart
Center for Human
Information Processing
Univ of California
La Jolla, CA 92093

Dr James F Seaford
Department of Psychology
George Mason University
4400 University Drive
Fairfax, VA 22030

Dr Walter Schneider
Learning R&D Center
University of Pittsburgh
3939 O'Hara Street
Pittsburgh, PA 15260

Dr Alan H Schoenfeld
University of California
Department of Education
Berkeley CA 94720

Dr Janet Schofield
Learning R&D Center
University of Pittsburgh
Pittsburgh, PA 15260

Karen A Schriver
Department of English
Carnegie-Mellon University
Pittsburgh, PA 15213

Dr Marc Sebrechts
Department of Psychology
Wesleyan University
Middletown CT 06475

Dr Judith Segal
OERI
555 New Jersey Ave, NW
Washington DC 20208

Dr Colleen M Seifert
Intelligent Systems Group
Institute for
Cognitive Science (C-015)
UCSD
La Jolla CA 92093

Dr Ramsay W Selden
Assessment Center
(CCSO)
Suite 379
400 N Capitol, NW
Washington DC 20001

Dr Sylvio A S Shalto
 Department of
 Computer Science
 Towson State University
 Towson, MD 21204

Dr Ben Shoemaker
 Dept of Computer Science
 University of Maryland
 College Park, MD 20742

Dr Lee Shulman
 Stanford University
 1040 Cathcart Way
 Stanford CA 94305

Dr Rendell Shumaker
 Naval Research Laboratory
 Code 7510
 4555 Overlook Avenue S W
 Washington DC 20375-5000

Dr Valerie Shute
 AFHRL/MOE
 Brooks AFB TX 78235

Dr Robert S Siegler
 Carnegie-Mellon University
 Department of Psychology
 Schenley Park
 Pittsburgh PA 15213

Dr Zita M Simutis
 Instructional Technology
 Systems Area
 ARI
 3001 Eisenhower Avenue
 Alexandria, VA 22333

Dr M Wallace Sineiko
 Manpower Research
 and Advisory Services
 Smithsonian Institution
 801 North Pitt Street
 Alexandria, VA 22314

Dr Derek Sleeman
 Dept of Computing Science
 King's College
 Old Aberdeen
 AB9 2UB
 UNITED KINGDOM

Dr Richard E Snow
 Department of Psychology
 Stanford University
 Stanford CA 94306

Dr Elliot Soloway
 Yale University
 Computer Science Department
 P O Box 3338
 New Haven CT 06520

Dr Kathryn T Spoehr
 Brown University
 Department of Psychology
 Providence RI 02912

James J Staszewski
 Research Associate
 Carnegie-Mellon University
 Department of Psychology
 Schenley Park
 Pittsburgh PA 15213

Dr Robert Sternberg
 Department of Psychology
 Yale University
 Box 11A Yale Station
 New Haven CT 06520

Dr Albert Stevens
 Bolt Beranek & Newman Inc
 10 Moulton St
 Cambridge MA 02238

Dr Paul J Sliche
 Senior Staff Scientist
 Training Research Division
 HwMRR0
 1100 S Washington
 Alexandria VA 22314

Dr Thomas Slichti
 Navy Personnel R&D Center
 San Diego CA 92152-6800

Dr John Tangney
 AFOSR/NL
 Bolling AFB DC 20332

Dr Kikumi Tatsuoka
 CERL
 252 Engineering Research
 Laboratory
 Urbana, IL 61801

Dr Robert P Taylor
 Teachers College
 Columbia University
 New York NY 10027

Dr Perry W Thorndyke
 FMC Corporation
 Central Engineering Labs
 1185 Coleman Avenue Box 580
 Santa Clara CA 95052

Dr Sharon Tkacz
 Army Research Institute
 5001 Eisenhower Avenue
 Alexandria VA 22333

Dr Douglas Towne
 Behavioral Technology Labs
 1845 S Elena Ave
 Redondo Beach CA 90277

Dr Paul Twohig
 Army Research Institute
 5001 Eisenhower Avenue
 Alexandria VA 22333

Dr Kurt Van Lehn
 Department of Psychology
 Carnegie-Mellon University
 Schenley Park
 Pittsburgh PA 15213

Dr Jerry Vogt
 Navy Personnel R&D Center
 Code 51
 San Diego, CA 92152-6800

Dr Beth Warren
 Bolt Beranek & Newman Inc
 50 Moulton Street
 Cambridge, MA 02138

Dr Barbara White
 Bolt Beranek & Newman Inc
 10 Moulton Street
 Cambridge MA 02238

LCDR Cory deGroot Whitehead
 Chief of Naval Operations
 OP-112G1
 Washington, DC 20370-2000

Dr Heather Wild
 Naval Air Development
 Center
 Code 6021
 Warminster, PA 18974-5000

Dr William Clancy
 Stanford University
 Knowledge Systems Laboratory
 701 Welch Road, Bldg C
 Palo Alto, CA 94304

Dr Michael Williams
 IntelliCorp
 1975 El Camino Real West
 Mountain View CA 94040-2218

Dr Robert A Wisner
 U S Army Institute for the
 Behavioral and Social Science
 5001 Eisenhower Avenue
 Alexandria VA 22333

Dr Martin F Wiskoff
 Navy Personnel R & D Center
 San Diego CA 92152-6800

Dr Dan Wolz
 AFHRL/MOE
 Brooks AFB TX 78235

Dr Wallace Wulfeck, III
 Navy Personnel R&D Center
 San Diego CA 92152-6800

Dr Joe Yonetake
 AFHRL/LRT
 Lowry AFB CO 80230

Dr Joseph L Young
 Memory & Cognitive
 Processes
 National Science Foundation
 Washington DC 20550

Dr Steven Zornetzer
Office of Naval Research
Code 114
800 M Quincey St
Arlington VA 22217-5000

END

DATE

FILM

JAN
1988