

AD-A188 024

SELECTED MEDICAL CARE STATISTICS (U) WASHINGTON
HEADQUARTERS SERVICES (DOD) DC DIRECTORATE FOR
INFORMATION OPERATIONS AND REPORTS 30 SEP 87
DIOR/L82-87/04

1/1

UNCLASSIFIED

F/G 5/2

ML

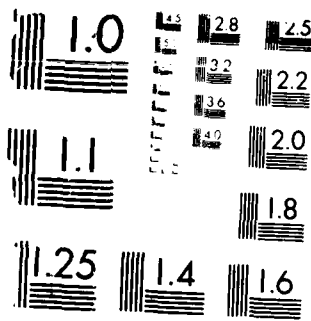
END

DATE

FORMED

2 87

11



1951-1952 RESOLUTION TEST CHART



AD-A188 024

12

DTIC FILE COPY

L02

Department of Defense
SELECTED MEDICAL CARE STATISTICS

Quarter Ending September 30, 1987

DTIC
SELECTE
S **D**
JAN 26 1988
C&D



DISTRIBUTION STATEMENT A
Approved for public release
Distribution Unlimited

DIRECTORATE FOR INFORMATION
OPERATIONS AND REPORTS (DIOR)

Department of Defense Selected Medical Care Statistics

Quarter Ending September 30, 1987

Washington Headquarters Services
Directorate for Information
Operations and Reports

FOR SALE BY THE SUPERINTENDENT OF DOCUMENTS
U.S. GOVERNMENT PRINTING OFFICE
WASHINGTON, D.C. 20402

Accessible to:	
NTIS	✓
DTIC	✓
DTIC TAB	
Unannounced	
Justification	
By	
Date	
Author	
Subject	
Doc. No.	AF1

DTIC and NTIS identification number for this publication is DIOR/LO2-87/04.

FOREWORD

Selected Medical Care Statistics (SMCS) is a quarterly publication prepared by the Washington Headquarters Services, Directorate for Information Operations and Reports (WHS/DIOR) of the Office of the Secretary of Defense.

SMCS presents quarterly summary data concerning medical care provided at fixed military medical facilities located in (1) the United States and (2) outside the United States, in territories, possessions and foreign countries. This publication contains pie charts which are based on the percent of the worldwide DoD total for each of the categories. Admissions and beds occupied by dependents of other uniformed personnel (PHS, CG, NÓAA) are less than one percent and are included in the other category.

This publication is generated from a computerized data base developed and maintained in consonance with Department of Defense Instruction (DoDI) 6015.14, November 14, 1977, under Reports Control Symbol HA(Q)1474 by the Manpower Management Information Division of WHS/DIOR.

TABLE OF CONTENTS

TABLE NUMBER		PAGE
Table 1.1	Operating Beds/Operating Bassinets/Beds Occupied - Worldwide.....	1
Figure 1.1	Beds Occupied - Percent of DoD Total Worldwide.....	3
Table 1.2	Operating Beds/Operating Bassinets/Beds Occupied - United States.....	4
Table 1.3	Operating Beds/Operating Bassinets/Beds Occupied - Outside United States.....	6
Table 2.1	Admissions - Worldwide.....	8
Figure 2.1	Admissions - Percent of DoD Total Worldwide.....	10
Table 2.2	Admissions - United States.....	11
Table 2.3	Admissions - Outside United States.....	13
Table 3.1	Outpatient Visits and Live Births - Worldwide.....	15
Figure 3.1	Outpatient Visits - Percent of Worldwide Total.....	17
Table 3.2	Outpatient Visits and Live Births - United States.....	18
Table 3.3	Outpatient Visits and Live Births - Outside United States.....	20
	GLOSSARY.....	23

TABLE 1.1
DEPARTMENT OF DEFENSE
SELECTED DATA CONCERNING MEDICAL CARE
PROVIDED AT FIXED MILITARY FACILITIES
FOR QUARTER ENDING SEPTEMBER 30, 1987

OPERATING BEDS - WORLDWIDE	DOD TOTAL	ARMY FACILITIES	NAVY FACILITIES	AIR FORCE FACILITIES
1. NUMBER OF OPERATING BEDS - TOTAL	17,119	7,641	4,156	5,322
2. NUMBER OF OPERATING BASSINETS - TOTAL	1,892	590	232	1,070
3. NUMBER OF BEDS OCCUPIED (DAILY AVERAGE) - TOTAL	12,925	6,366	2,572	3,987
4. BEDS OCCUPIED BY US ACTIVE DUTY UNIFORMED PERSONNEL - TOTAL	5,197	2,440	1,446	1,311
A. MILITARY - TOTAL	5,151	2,430	1,419	1,302
(1) ARMY	2,303	2,097	45	161
(2) NAVY-MARINE CORPS	1,603	154	1,326	123
(3) AIR FORCE	1,245	179	48	1,018
B. OTHER UNIFORMED PERSONNEL (PHS, CG, NOAA) - TOTAL	46	10	27	9
5. BEDS OCCUPIED BY RETIRED US UNIFORMED PERSONNEL - TOTAL	1,951	998	270	683
A. RETIRED MILITARY - TOTAL	1,936	993	264	679
(1) ARMY	845	662	39	144
(2) NAVY-MARINE CORPS	415	116	192	107
(3) AIR FORCE	676	215	33	428
B. OTHER RETIRED UNIFORMED PERSONNEL (PHS, CG, NOAA) - TOTAL	15	5	6	4

**TABLE 1.1
DEPARTMENT OF DEFENSE
SELECTED DATA CONCERNING MEDICAL CARE
PROVIDED AT FIXED MILITARY FACILITIES
FOR QUARTER ENDING SEPTEMBER 30, 1987**

OPERATING BEDS - WORLDWIDE	DOD TOTAL	ARMY FACILITIES	NAVY FACILITIES	AIR FORCE FACILITIES
6 BEDS OCCUPIED BY DEPENDENTS OF US ACTIVE DUTY MILITARY PERSONNEL	- TOTAL 3,504	1,688	558	1,258
(1) ARMY	1,513	1,339	33	141
(2) NAVY-MARINE CORPS	747	148	483	116
(3) AIR FORCE	1,244	201	42	1,001
7 BEDS OCCUPIED BY DEPENDENTS OF RETIRED AND DECEASED US MILITARY PERSONNEL	- TOTAL 1,637	787	226	624
(1) ARMY	679	516	35	128
(2) NAVY-MARINE CORPS	341	93	161	87
(3) AIR FORCE	617	178	30	409
8 BEDS OCCUPIED BY DEPENDENTS OF OTHER UNIFORMED PERSONNEL (PHS, CG NOAA)	- TOTAL 43	14	12	17
9 BEDS OCCUPIED BY ALL OTHER BENEFICIARIES	- TOTAL 593	439	60	94

**BEDS OCCUPIED—PERCENT OF DOD TOTAL WORLDWIDE
QUARTER ENDING SEPTEMBER 30, 1987**

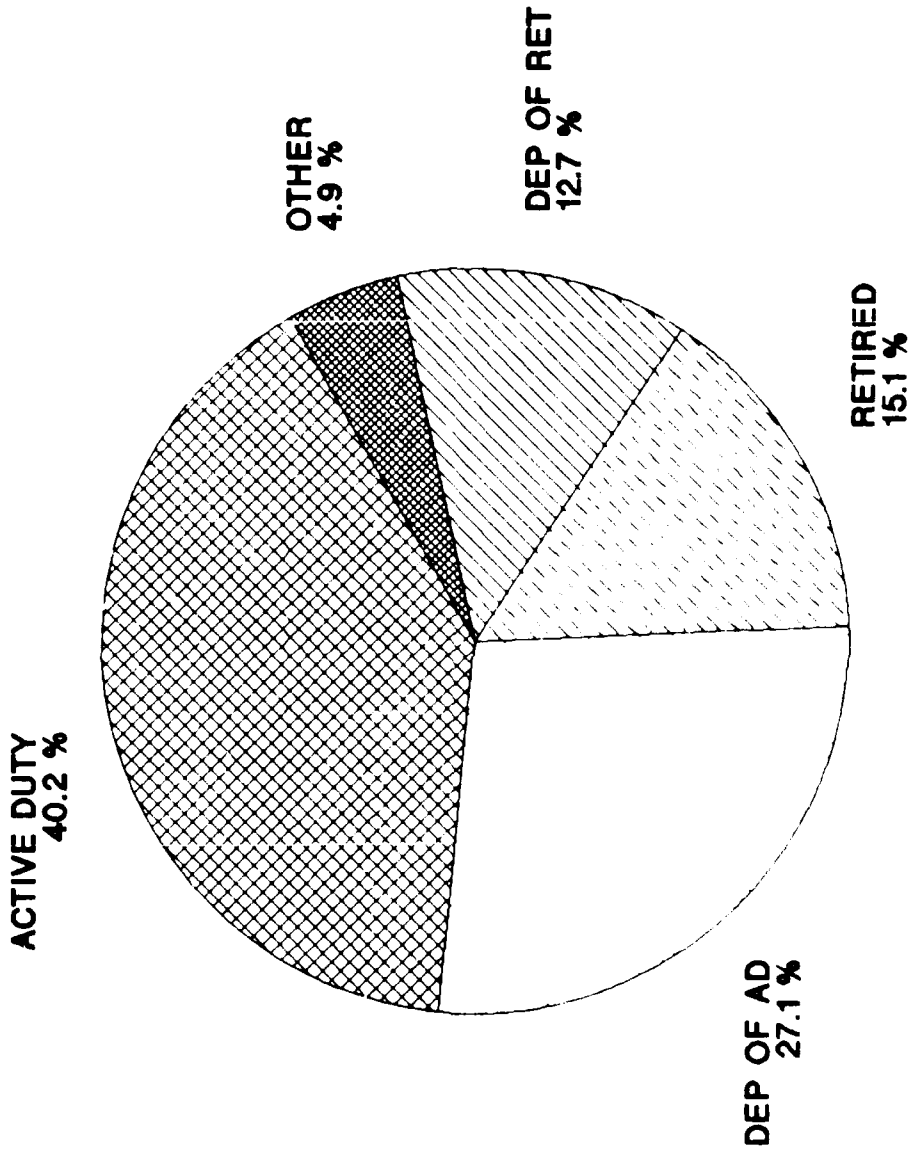


FIGURE 1.1

**TABLE 1.2
DEPARTMENT OF DEFENSE
SELECTED DATA CONCERNING MEDICAL CARE
PROVIDED AT FIXED MILITARY FACILITIES
FOR QUARTER ENDING SEPTEMBER 30, 1987**

OPERATING BEDS - UNITED STATES	DOD TOTAL	ARMY FACILITIES	NAVY FACILITIES	AIR FORCE FACILITIES
1. NUMBER OF OPERATING BEDS - TOTAL	14,635	6,262	3,717	4,656
2. NUMBER OF OPERATING BASSINETS - TOTAL	1,551	442	193	916
3. NUMBER OF BEDS OCCUPIED (DAILY AVERAGE) - TOTAL	10,963	5,253	2,256	3,454
4. BEDS OCCUPIED BY US ACTIVE DUTY UNIFORMED PERSONNEL - TOTAL	4,181	1,860	1,251	1,070
A. MILITARY - TOTAL	4,136	1,850	1,225	1,061
(1) ARMY	1,743	1,577	39	127
(2) NAVY-MARINE CORPS	1,389	141	1,149	99
(3) AIR FORCE	1,004	132	37	835
B. OTHER UNIFORMED PERSONNEL (PHS, CG, NOAA) - TOTAL	45	10	26	9
5. BEDS OCCUPIED BY RETIRED US UNIFORMED PERSONNEL - TOTAL	1,890	969	257	664
A. RETIRED MILITARY - TOTAL	1,876	964	252	660
(1) ARMY	818	640	37	141
(2) NAVY-MARINE CORPS	399	114	183	102
(3) AIR FORCE	659	210	32	417
B. OTHER RETIRED UNIFORMED PERSONNEL (PHS, CG, NOAA) - TOTAL	14	5	5	4

**TABLE 1.2
DEPARTMENT OF DEFENSE
SELECTED DATA CONCERNING MEDICAL CARE
PROVIDED AT FIXED MILITARY FACILITIES
FOR QUARTER ENDING SEPTEMBER 30, 1987**

OPERATING BEDS - UNITED STATES	DOD TOTAL	ARMY FACILITIES	NAVY FACILITIES	AIR FORCE FACILITIES
6. BEDS OCCUPIED BY DEPENDENTS OF US ACTIVE DUTY MILITARY PERSONNEL	- TOTAL	1,264	468	1,018
(1) ARMY	1,116	983	26	107
(2) NAVY-MARINE CORPS	660	140	420	100
(3) AIR FORCE	974	141	22	811
7. BEDS OCCUPIED BY DEPENDENTS OF RETIRED AND DECEASED US MILITARY PERSONNEL	- TOTAL	769	217	606
(1) ARMY	658	503	32	123
(2) NAVY-MARINE CORPS	329	91	156	82
(3) AIR FORCE	605	175	29	401
8. BEDS OCCUPIED BY DEPENDENTS OF OTHER UNIFORMED PERSONNEL (PHS, CG, NOAA)	- TOTAL	14	11	17
9. BEDS OCCUPIED BY ALL OTHER BENEFICIARIES	- TOTAL	377	52	79

TABLE 1.3
DEPARTMENT OF DEFENSE
SELECTED DATA CONCERNING MEDICAL CARE
PROVIDED AT FIXED MILITARY FACILITIES
FOR QUARTER ENDING SEPTEMBER 30, 1987

		DOD TOTAL	ARMY FACILITIES	NAVY FACILITIES	AIR FORCE FACILITIES
1	NUMBER OF OPERATING BEDS - TOTAL	2,484	1,379	439	666
2	NUMBER OF OPERATING BASSINETS - TOTAL	341	148	39	154
3	NUMBER OF BEDS OCCUPIED (DAILY AVERAGE) - TOTAL	1,962	1,113	316	533
4	BEDS OCCUPIED BY US ACTIVE DUTY UNIFORMED PERSONNEL - TOTAL	1,016	580	195	241
	A. MILITARY - TOTAL	1,015	580	194	241
	(1) ARMY	560	520	6	34
	(2) NAVY-MARINE CORPS	214	13	177	24
	(3) AIR FORCE	241	47	11	183
	B. OTHER UNIFORMED PERSONNEL (PHS.CG.NOAA) - TOTAL	1	0	1	0
5	BEDS OCCUPIED BY RETIRED US UNIFORMED PERSONNEL - TOTAL	61	29	13	19
	A. RETIRED MILITARY - TOTAL	60	29	12	19
	(1) ARMY	27	22	2	3
	(2) NAVY-MARINE CORPS	16	2	9	5
	(3) AIR FORCE	17	5	1	11
	B. OTHER RETIRED UNIFORMED PERSONNEL (PHS.CG.NOAA) - TOTAL	1	0	1	0

**TABLE 1.3
DEPARTMENT OF DEFENSE
SELECTED DATA CONCERNING MEDICAL CARE
PROVIDED AT FIXED MILITARY FACILITIES
FOR QUARTER ENDING SEPTEMBER 30, 1987**

	OPERATING BEDS - OUTSIDE UNITED STATES	DOD TOTAL	ARMY FACILITIES	NAVY FACILITIES	AIR FORCE FACILITIES
6	BEDS OCCUPIED BY DEPENDENTS OF US ACTIVE DUTY MILITARY PERSONNEL - TOTAL	754	424	90	240
	(1) ARMY	397	356	7	34
	(2) NAVY-MARINE CORPS	87	8	63	16
	(3) AIR FORCE	270	60	20	190
7	BEDS OCCUPIED BY DEPENDENTS OF RETIRED AND DECEASED US MILITARY PERSONNEL - TOTAL	45	18	9	18
	(1) ARMY	21	13	3	5
	(2) NAVY-MARINE CORPS	12	2	5	5
	(3) AIR FORCE	12	3	1	8
8	BEDS OCCUPIED BY DEPENDENTS OF OTHER UNIFORMED PERSONNEL (PHS, CG, NOAA) - TOTAL	1	0	1	0
9	BEDS OCCUPIED BY ALL OTHER BENEFICIARIES - TOTAL	85	62	8	15

**TABLE 2.1
DEPARTMENT OF DEFENSE
SELECTED DATA CONCERNING MEDICAL CARE
PROVIDED AT FIXED MILITARY FACILITIES
FOR QUARTER ENDING SEPTEMBER 30, 1987**

	ADMISSIONS - WORLDWIDE	DOD TOTAL	ARMY FACILITIES	NAVY FACILITIES	AIR FORCE FACILITIES
00	NUMBER OF ADMISSIONS - TOTAL	230,710	108,899	50,646	71,165
01	ADMISSIONS OF US ACTIVE DUTY UNIFORMED PERSONNEL - TOTAL	75,471	33,205	22,506	19,760
A	MILITARY - TOTAL	74,760	33,085	22,066	19,609
	(1) ARMY	31,491	29,199	588	1,704
	(2) NAVY-MARINE CORPS	23,496	1,763	20,518	1,215
	(3) AIR FORCE	19,773	2,123	960	16,690
B	OTHER UNIFORMED PERSONNEL (PHS,CG,NOAA) - TOTAL	711	120	440	151
02	ADMISSIONS OF RETIRED US UNIFORMED PERSONNEL - TOTAL	26,398	13,235	4,839	8,323
A	ADMISSIONS OF RETIRED MILITARY	26,160	13,161	4,732	8,267
	(1) ARMY	11,074	8,737	695	1,642
	(2) NAVY-MARINE CORPS	6,179	1,564	3,404	1,211
	(3) AIR FORCE	8,907	2,860	633	5,414
B	ADMISSIONS OF OTHER RETIRED UNIFORMED PERSONNEL (PHS CG NOAA) - TOTAL	238	75	107	56
03	ADMISSIONS OF DEPENDENTS OF US ACTIVE DUTY PERSONNEL (PHS CG NOAA) - TOTAL	92,626	43,009	18,063	31,554
A	ARMY	39,249	35,314	866	3,069
B	NAVY-MARINE CORPS	21,515	3,380	15,565	2,570
C	AIR FORCE	31,862	4,315	1,632	25,915

**TABLE 2.1
DEPARTMENT OF DEFENSE
SELECTED DATA CONCERNING MEDICAL CARE
PROVIDED AT FIXED MILITARY FACILITIES
FOR QUARTER ENDING SEPTEMBER 30, 1987**

ADMISSIONS - WORLDWIDE	DOD TOTAL	ARMY FACILITIES	NAVY FACILITIES	AIR FORCE FACILITIES
14. ADMISSIONS OF DEPENDENTS OF RETIRED AND DECEASED US MILITARY PERSONNEL - TOTAL	25,107	11,745	4,051	9,311
A. ARMY	10,221	7,871	634	1,716
B. NAVY-MARINE CORPS	5,574	1,372	2,879	1,323
C. AIR FORCE	9,312	2,502	538	6,272
15. ADMISSIONS OF DEPENDENTS OF OTHER UNIFORMED PERSONNEL (PHS, CG, NOAA) - TOTAL	939	278	328	333
16. ADMISSIONS OF ALL OTHER BENEFICIARIES - TOTAL	10,169	7,426	859	1,884

**ADMISSIONS-PERCENT OF DOD TOTAL WORLDWIDE
QUARTER ENDING SEPTEMBER 30, 1987**

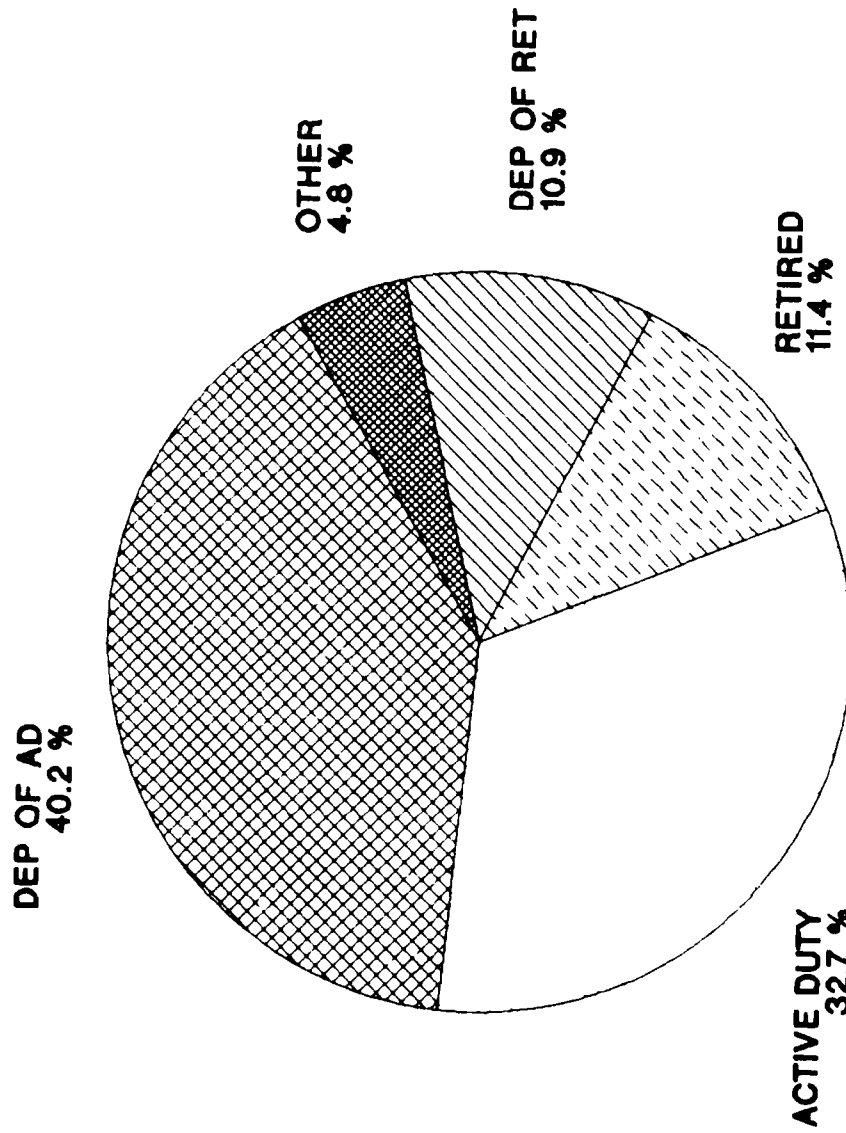


FIGURE 2.1

TABLE 2.2
DEPARTMENT OF DEFENSE
SELECTED DATA CONCERNING MEDICAL CARE
PROVIDED AT FIXED MILITARY FACILITIES
FOR QUARTER ENDING SEPTEMBER 30, 1987

ADMISSIONS - UNITED STATES	DOD TOTAL	ARMY FACILITIES	NAVY FACILITIES	AIR FORCE FACILITIES
10. NUMBER OF ADMISSIONS - TOTAL	192,554	88,924	43,319	60,311
11. ADMISSIONS OF US ACTIVE DUTY UNIFORMED PERSONNEL - TOTAL	59,925	25,277	19,067	15,581
A. MILITARY - TOTAL	59,245	25,158	18,655	15,432
(1) ARMY	23,755	22,109	506	1,140
(2) NAVY-MARINE CORPS	20,069	1,600	17,557	912
(3) AIR FORCE	15,421	1,449	592	13,380
B. OTHER UNIFORMED PERSONNEL (PHS, CG, NOAA) - TOTAL	680	119	412	149
12. ADMISSIONS OF RETIRED US UNIFORMED PERSONNEL - TOTAL	25,599	12,876	4,637	8,086
A. ADMISSIONS OF RETIRED MILITARY	25,365	12,801	4,534	8,030
(1) ARMY	10,683	8,464	626	1,593
(2) NAVY-MARINE CORPS	6,004	1,547	3,300	1,157
(3) AIR FORCE	8,678	2,790	608	5,280
B. ADMISSIONS OF OTHER RETIRED UNIFORMED PERSONNEL (PHS, CG, NOAA) - TOTAL	234	75	103	56
13. ADMISSIONS OF DEPENDENTS OF US ACTIVE DUTY PERSONNEL (PHS, CG, NOAA) - TOTAL	73,061	32,482	14,768	25,811
A. ARMY	29,209	26,280	639	2,290
B. NAVY-MARINE CORPS	19,167	3,255	13,581	2,331
C. AIR FORCE	24,685	2,947	548	21,190

**TABLE 2.2
DEPARTMENT OF DEFENSE
SELECTED DATA CONCERNING MEDICAL CARE
PROVIDED AT FIXED MILITARY FACILITIES
FOR QUARTER ENDING SEPTEMBER 30, 1987**

ADMISSIONS - UNITED STATES	DOD TOTAL	ARMY FACILITIES	NAVY FACILITIES	AIR FORCE FACILITIES
14. ADMISSIONS OF DEPENDENTS OF RETIRED AND DECEASED US MILITARY PERSONNEL - TOTAL	24,426	11,472	3,867	9,087
A. ARMY	9,905	7,685	561	1,659
B. NAVY-MARINE CORPS	5,403	1,342	2,791	1,270
C. AIR FORCE	9,118	2,445	515	6,158
15. ADMISSIONS OF DEPENDENTS OF OTHER UNIFORMED PERSONNEL (PHS, CG, NOAA) - TOTAL	895	275	294	326
16. ADMISSIONS OF ALL OTHER BENEFICIARIES - TOTAL	8,648	6,542	686	1,420

**TABLE 2.3
DEPARTMENT OF DEFENSE
SELECTED DATA CONCERNING MEDICAL CARE
PROVIDED AT FIXED MILITARY FACILITIES
FOR QUARTER ENDING SEPTEMBER 30, 1987**

ADMISSIONS - OUTSIDE UNITED STATES	DOD TOTAL	ARMY FACILITIES	NAVY FACILITIES	AIR FORCE FACILITIES
10. NUMBER OF ADMISSIONS - TOTAL	38,156	19,975	7,327	10,854
11. ADMISSIONS OF US ACTIVE DUTY UNIFORMED PERSONNEL - TOTAL	15,546	7,928	3,439	4,179
A. MILITARY - TOTAL	15,515	7,927	3,411	4,177
(1) ARMY	7,736	7,090	82	564
(2) NAVY-MARINE CORPS	3,427	163	2,961	303
(3) AIR FORCE	4,352	674	368	3,310
B. OTHER UNIFORMED PERSONNEL (PHS,CG,NOAA) - TOTAL	31	1	28	2
12. ADMISSIONS OF RETIRED US UNIFORMED PERSONNEL - TOTAL	799	360	202	237
A. ADMISSIONS OF RETIRED MILITARY	795	360	198	237
(1) ARMY	391	273	69	49
(2) NAVY-MARINE CORPS	175	17	104	54
(3) AIR FORCE	229	70	25	134
B. ADMISSIONS OF OTHER RETIRED UNIFORMED PERSONNEL (PHS,CG,NOAA) - TOTAL	4	0	4	0
13. ADMISSIONS OF DEPENDENTS OF US ACTIVE DUTY PERSONNEL (PHS,CG,NOAA) - TOTAL	19,565	10,527	3,295	5,743
A. ARMY	10,040	9,034	227	779
B. NAVY-MARINE CORPS	2,348	125	1,984	239
C. AIR FORCE	7,177	1,368	1,084	4,725

TABLE 2.3
DEPARTMENT OF DEFENSE
SELECTED DATA CONCERNING MEDICAL CARE
PROVIDED AT FIXED MILITARY FACILITIES
FOR QUARTER ENDING SEPTEMBER 30, 1987

ADMISSIONS - OUTSIDE UNITED STATES	DOD TOTAL	ARMY FACILITIES	NAVY FACILITIES	AIR FORCE FACILITIES
14. ADMISSIONS OF DEPENDENTS OF RETIRED AND DECEASED US MILITARY PERSONNEL - TOTAL	681	273	184	224
A. ARMY	316	186	73	57
B. NAVY-MARINE CORPS	171	30	88	53
C. AIR FORCE	194	57	23	114
15. ADMISSIONS OF DEPENDENTS OF OTHER UNIFORMED PERSONNEL (PHS, CG, NOAA) - TOTAL	44	3	34	7
16. ADMISSIONS OF ALL OTHER BENEFICIARIES - TOTAL	1,521	884	173	464

**TABLE 3.1
DEPARTMENT OF DEFENSE
SELECTED DATA CONCERNING MEDICAL CARE
PROVIDED AT FIXED MILITARY FACILITIES
FOR QUARTER ENDING SEPTEMBER 30, 1987**

OUTPATIENT VISITS - WORLDWIDE	DOD TOTAL	ARMY FACILITIES	NAVY FACILITIES	AIR FORCE FACILITIES
17. NUMBER OF OUTPATIENT VISITS - TOTAL	11,450,251	5,172,994	2,415,259	3,861,998
18. OUTPATIENT VISITS BY US ACTIVE DUTY UNIFORMED PERSONNEL - TOTAL	4,710,431	2,079,448	1,283,675	1,347,308
A. MILITARY - TOTAL	4,679,646	2,074,288	1,262,524	1,342,834
(1) ARMY	2,042,229	1,968,684	19,168	54,377
(2) NAVY-MARINE CORPS	1,310,611	49,228	1,228,997	32,386
(3) AIR FORCE	1,326,806	56,376	14,359	1,256,071
B. OTHER UNIFORMED PERSONNEL (PHS, CG, NOAA) - TOTAL	30,785	5,160	21,151	4,474
19. OUTPATIENT VISITS BY RETIRED US UNIFORMED PERSONNEL - TOTAL	988,138	473,980	130,759	383,399
20. OUTPATIENT VISITS BY DEPENDENTS OF US ACTIVE DUTY UNIFORMED PERSONNEL - TOTAL	3,686,605	1,659,561	576,560	1,450,484
A. DEPENDENTS OF MILITARY PERSONNEL - TOTAL	3,662,543	1,651,869	570,039	1,440,635
(1) ARMY	1,549,958	1,436,737	23,218	90,003
(2) NAVY-MARINE CORPS	683,694	96,377	523,301	64,016
(3) AIR FORCE	1,428,891	118,755	23,520	1,286,616
B. DEPENDENTS OF OTHER UNIFORMED PERSONNEL (PHS, CG, NOAA) - TOTAL	24,062	7,692	6,521	9,849

**TABLE 3.1
DEPARTMENT OF DEFENSE
SELECTED DATA CONCERNING MEDICAL CARE
PROVIDED AT FIXED MILITARY FACILITIES
FOR QUARTER ENDING SEPTEMBER 30, 1987**

OUTPATIENT VISITS - WORLDWIDE	DOD TOTAL	ARMY FACILITIES	NAVY FACILITIES	AIR FORCE FACILITIES
21 OUTPATIENT VISITS BY DEPENDENTS OF RETIRED AND DECEASED US UNIFORMED PERSONNEL - TOTAL	1,253,205	549,325	145,173	558,707
22 OUTPATIENT VISITS BY ALL OTHER BENEFICIARIES - TOTAL	811,872	410,680	279,092	122,100
23 NUMBER OF LIVE BIRTHS - TOTAL	26,250	11,042	6,134	9,074

**OUTPATIENT VISITS—PERCENT OF WORLDWIDE TOTAL
QUARTER ENDING SEPTEMBER 30, 1987**

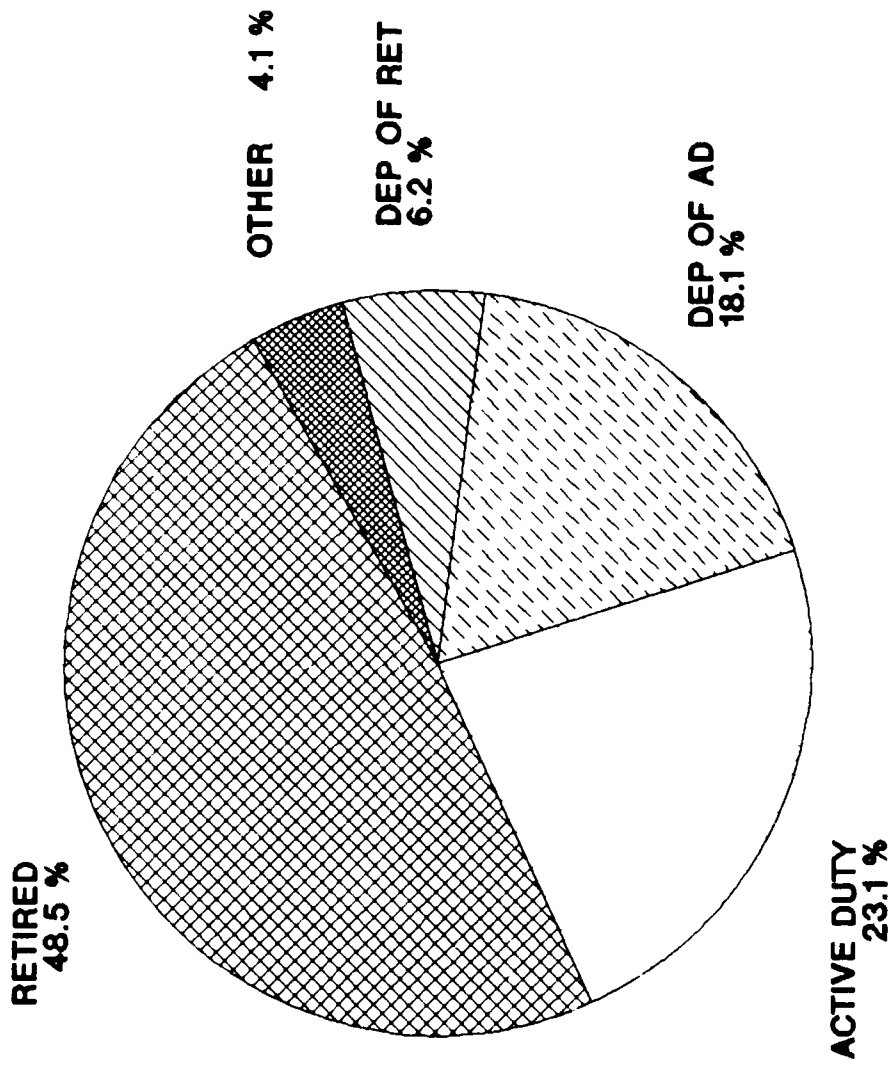


FIGURE 3.1

**TABLE 3.2
DEPARTMENT OF DEFENSE
SELECTED DATA CONCERNING MEDICAL CARE
PROVIDED AT FIXED MILITARY FACILITIES
FOR QUARTER ENDING SEPTEMBER 30, 1987**

	OUTPATIENT VISITS - UNITED STATES	DOD TOTAL	ARMY FACILITIES	NAVY FACILITIES	AIR FORCE FACILITIES
17	NUMBER OF OUTPATIENT VISITS - TOTAL	9,530,619	4,149,217	2,134,487	3,246,915
18	OUTPATIENT VISITS BY US ACTIVE DUTY UNIFORMED PERSONNEL	3,754,248	1,552,095	1,147,215	1,054,938
	A. MILITARY - TOTAL	3,724,531	1,546,954	1,126,948	1,050,629
	(1) ARMY	1,507,328	1,458,894	14,685	33,749
	(2) NAVY-MARINE CORPS	1,173,764	45,303	1,104,164	24,297
	(3) AIR FORCE	1,043,439	42,757	8,099	992,583
	B. OTHER UNIFORMED PERSONNEL (PHS, CG, NOAA) - TOTAL	29,717	5,141	20,267	4,309
19	OUTPATIENT VISITS BY RETIRED US UNIFORMED PERSONNEL - TOTAL	960,250	461,402	124,264	374,584
20	OUTPATIENT VISITS BY DEPENDENTS OF US ACTIVE DUTY UNIFORMED PERSONNEL - TOTAL	2,873,617	1,232,743	473,956	1,166,918
	A. DEPENDENTS OF MILITARY PERSONNEL - TOTAL	2,850,669	1,225,075	468,131	1,157,463
	(1) ARMY	1,123,091	1,039,244	18,151	65,696
	(2) NAVY-MARINE CORPS	589,181	92,262	438,717	58,202
	(3) AIR FORCE	1,138,397	93,569	11,263	1,033,565
	B. DEPENDENTS OF OTHER UNIFORMED PERSONNEL (PHS, CG, NOAA) - TOTAL	22,948	7,668	5,825	9,455

**TABLE 3.2
DEPARTMENT OF DEFENSE
SELECTED DATA CONCERNING MEDICAL CARE
PROVIDED AT FIXED MILITARY FACILITIES
FOR QUARTER ENDING SEPTEMBER 30, 1987**

	OUTPATIENT VISITS - UNITED STATES	DOD TOTAL	ARMY FACILITIES	NAVY FACILITIES	AIR FORCE FACILITIES
21	OUTPATIENT VISITS BY DEPENDENTS OF RETIRED AND DECEASED US UNIFORMED PERSONNEL - TOTAL	1,228,034	540,392	137,919	549,723
22	OUTPATIENT VISITS BY ALL OTHER BENEFICIARIES - TOTAL	714,470	362,585	251,133	100,752
23	NUMBER OF LIVE BIRTHS - TOTAL	20,667	8,052	5,052	7,563

**TABLE 3.3
DEPARTMENT OF DEFENSE
SELECTED DATA CONCERNING MEDICAL CARE
PROVIDED AT FIXED MILITARY FACILITIES
FOR QUARTER ENDING SEPTEMBER 30, 1987**

OUTPATIENT VISITS - OUTSIDE UNITED STATES	DOD TOTAL	ARMY FACILITIES	NAVY FACILITIES	AIR FORCE FACILITIES
17. NUMBER OF OUTPATIENT VISITS - TOTAL	1,919,632	1,023,777	280,772	615,083
18. OUTPATIENT VISITS BY US ACTIVE DUTY UNIFORMED PERSONNEL	956,183	527,353	136,460	292,370
A. MILITARY	955,115	527,334	135,576	292,205
(1) ARMY	534,901	509,790	4,483	20,628
(2) NAVY-MARINE CORPS	136,847	3,925	124,833	8,089
(3) AIR FORCE	283,367	13,619	6,260	263,488
B. OTHER UNIFORMED PERSONNEL (PHS,CG,NOAA) - TOTAL	1,068	19	884	165
19. OUTPATIENT VISITS BY RETIRED US UNIFORMED PERSONNEL - TOTAL	27,888	12,578	6,495	8,815
20. OUTPATIENT VISITS BY DEPENDENTS OF US ACTIVE DUTY UNIFORMED PERSONNEL	812,988	426,818	102,604	283,566
A. DEPENDENTS OF MILITARY PERSONNEL	811,874	426,794	101,908	283,172
(1) ARMY	426,867	397,493	5,067	24,307
(2) NAVY-MARINE CORPS	94,513	4,115	84,584	5,814
(3) AIR FORCE	290,494	25,186	12,257	253,051
B. DEPENDENTS OF OTHER UNIFORMED PERSONNEL (PHS,CG,NOAA) - TOTAL	1,114	24	696	394

**TABLE 3.3
DEPARTMENT OF DEFENSE
SELECTED DATA CONCERNING MEDICAL CARE
PROVIDED AT FIXED MILITARY FACILITIES
FOR QUARTER ENDING SEPTEMBER 30, 1987**

OUTPATIENT VISITS - OUTSIDE UNITED STATES	DOD TOTAL	ARMY FACILITIES	NAVY FACILITIES	AIR FORCE FACILITIES
21 OUTPATIENT VISITS BY DEPENDENTS OF RETIRED AND DECEASED US UNIFORMED PERSONNEL	TOTAL 25 171	8 933	7 254	8 984
22 OUTPATIENT VISITS BY ALL OTHER BENEFICIARIES	TOTAL 97 402	48 095	27 959	21 348
23 NUMBER OF LIVE BIRTHS	TOTAL 5 583	2 990	1 082	1 511

GLOSSARY

Admission. An admission is the act of placing an individual under treatment or observation in a medical center or a hospital. The day of admission is the day on which the medical center or hospital makes a formal acceptance of the patient who is to be provided with room, board, and continuous nursing service in an area of the hospital where patients normally stay at least overnight. If both an admission and discharge occur on the same day, then that day is considered as a day of admission and shall be counted as one occupied bed day. The admission of a newborn is deemed to occur at time of birth.

Live Births. A live birth is the complete expulsion or extraction from its mother of a product of conception, irrespective of the duration of pregnancy which after such separation, breathes or shows any other evidence of life such as beating of the heart, pulsation of the umbilical cord, or definite movement of voluntary muscles, whether or not the umbilical cord has been cut, or the placenta is attached; each such product of such a birth is considered liveborn.

Occupied Bed. A bed assigned as of midnight to a patient, to include a patient on pass or liberty not in excess of 72 hours, and any bassinets assigned to a newborn infant whose mother has been discharged from the hospital. The definition excludes: any bed assigned to a patient subsisting out, on leave, or absent without leave, and any bed occupied by a transient patient.

Operating Bed. A bed that is currently set up and ready in all respects for the care of a patient. It must include supporting space, equipment and staff to operate under normal circumstances. Excluded are nursery bassinets and transient patients' beds.

Operating Bassinet. A bed designed for the care of an infant that is currently set up in the newborn nursery and ready in all respects for use. It must include support space, equipment and staff to operate under normal circumstances. Excluded are infant transporters.

Outpatient Visits. Visits made to each dispensary or separate, organized clinic of a fixed medical treatment facility for medical advice, examination, diagnosis, treatment, evaluation, consultation, or counseling, including visits by military patients who are excused from duty for medical reasons but who have not been admitted for inpatient care in a facility authorized beds for inpatient care and any visits made incident to complete physicals or flight physicals.

**DAT
FILM
2008**