

AD-A188 355

COINCIDENT LIDAR AND AIRCRAFT OBSERVATIONS OF
ENTRAINMENT INTO THERMALS AND MIXED LAYERS(U) AIR FORCE
GLOBAL WEATHER CENTRAL OFFUTT AFB NE T D CRUM ET AL
JUL 87 AFMC/JA-87/001

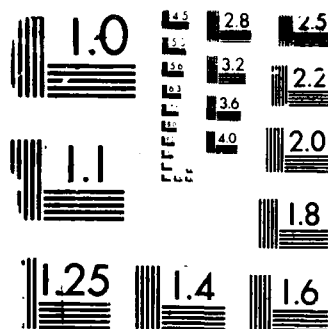
1/1

UNCLASSIFIED

F/G 4/2

NL





MICROCOPY RESOLUTION TEST CHART

1

AD-A188 355

UNCLASSIFIED

REPORT DOCUMENTATION PAGE

DTIC FILE COPY

- 1a. Report Security Classification: UNCLASSIFIED
- 3. Distribution/Availability of Report: *Approved for public release; distribution is unlimited.*
Not available from DTIC; see Item 16.
- 4. Performing Organization Report Number: AFGWC/JA-87/001
- 6a. Name of Performing Organization: Air Force Global Weather Central
- 6b. Office Symbol: SDD
- 6c. Address: Offutt AFB, NE 68113-5000
- 11. Title: Coincident Lidar and Aircraft Observations of Entrainment into Thermals and Mixed Layers
- 12. Personal Authors: Maj Timothy D. Crum (AFGWC/SDD), Roland B. Stull, and Edwin W. Eloranta
- 13a. Type of Report: Journal Article
- 14. Date of Report: July 1987
- 15. Page Count: 16
- 16. Supplementary Notation: Announcement only; not available from DTIC. Published in Journal of Climate and Applied Meteorology, Vol 26, No 7, July 1987, © 1987 American Meteorological Society.
- 17. COSATI Codes: Field--04, Group--02
- 18. Subject Terms: WEATHER, WEATHER RECONNAISSANCE AIRCRAFT, PHYSICS, ATMOSPHERIC PHYSICS, METEOROLOGY, METEOROLOGICAL PHENOMENA, METEOROLOGICAL INSTRUMENTS, atmospheric profiles, temperature, moisture, thermal fields, convective boundary layer, horizontal moisture zone, vertical velocity, lateral entrainment, intromission zone, weather instrumentation, weather measuring instruments, lidar, aircraft weather observations.
- 19. Abstract: Coincident observations of the daytime convective boundary layer over Oklahoma were made with the NCAR Queen Air aircraft and the University of Wisconsin ground-based lidar. The two data sets have been merged to provide a unique visual representation of the temperature, moisture, vertical velocity, turbulent kinetic energy and the momentum fluxes in a field of thermals. These data show that horizontal moisture profiles observed in thermals penetrating the entrainment zone tend to exhibit more of a top-hat profile than the corresponding temperature or vertical velocity profiles. The specific humidities observed at various heights including cloud base 1) are frequently nearly constant along the horizontal tracks within each thermal; 2) show thermal-to-thermal variability; and 3) have values nearly the same as found in the surface layer. This paper also proposes the concept of an "intromission zone" describing the zone of lateral entrainment at the edges of active thermals. For the data studied here, a lateral entrainment velocity of 0.3 ms^{-1} was observed (Author). *See report for details*
- 20. Distribution/Availability of Abstract: Same as report; see Item 16.
- 21. Abstract Security Classification: Unclassified
- 22a. Name of Responsible Individual: Col John W. Oliver
- 22b. Telephone: 402 294-3380 Autovon 271-3380
- 22c. Office Symbol: AFGWC/DO, Offutt AFB, NE 68113-5000

DTIC
ELECTE
JAN 12 1988
S D

DD FORM 1473

DTIC
COPY
INSPECTED
6

Accession For	<input checked="" type="checkbox"/> <input type="checkbox"/> <input type="checkbox"/>					
NTIS CRA&I						
DTIC TAB						
Unannounced						
Justification						
By						
Distribution /						
Availability Codes						
Avail and/or Special						
Dist						A-121

08 1 5 065

UNCLASSIFIED

END

DATE

FILMD

3-88

DTIC