

AD-A108 609

PRIME CONTRACT AWARDS BY STATE FISCAL YEAR 1987(U)
WASHINGTON HEADQUARTERS SERVICES (DOD) DC DIRECTORATE
FOR INFORMATION OPERATIONS AND REPORTS 1987

1/1

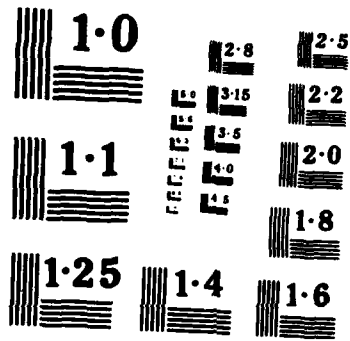
UNCLASSIFIED

DIOR/P09-87/82

F/G 5/1

NL





PRIME CONTRACT AWARDS BY STATE

Fiscal Year 1987

Accession For	
NTIS CRA&I	<input checked="" type="checkbox"/>
DTIC TAB	<input type="checkbox"/>
Unannounced	<input type="checkbox"/>
Justification	
By _____	
Distribution/	
Availability Codes	
Dist	Availability Codes
A-1	

Department of Defense
Washington Headquarters Services
Directorate for Information
Operations and Reports



~~For sale by the Superintendent of Documents, U.S. Government Printing Office, Washington, D.C. 20540~~

DTIC and NTIS identification number for this publication is DIOR/P09-87/02

3 Sem annual

FOREWORD

Prime Contract Awards by State is published semiannually.

This report provides information on Department of Defense procurement actions. Data are broken down into three categories:

- 1) Total U.S. Actions;
- 2) Actions Not Distributed by State; and
- 3) Total State Actions, which is further divided into separate totals for each state.

TABLE OF CONTENTS

Introduction.	1
Tables:	
Table 1. Net Value and Percent Distribution of DOD Procurement Actions, by State: FY 1987, FY 1986, and Fourth Quarter FY 1987 and FY 1986	3
Table 2. Net Value and Percent Distribution of DOD Military Procurement Actions, by State: FY 1987, FY 1986 and Fourth Quarter FY 1987 and FY 1986.	4
Table 3. Net Value and Percent Distribution of DOD Military Procurement Actions, by State, According to Defense Component: FY 1987	5
Table 4. Net Value and Percent Distribution of DOD Military Procurement Actions, by State: FY 1987, FY 1986, and FY 1985	6
Table 5. Net Value and Percent Distribution of DOD Civil Functions Procurement Actions, by State: FY 1987, FY 1986, and FY 1985	7

INTRODUCTION

Prime Contract Awards by State provides a wide variety of information on all Department of Defense (DOD) procurement actions. Both military and civil functions (i.e., Army Corps of Engineers--Civil Works) procurements are represented. The data are presented by state and include the net value of procurements awarded to each state as well as each state's percentage of the total for all state procurements.

The total net value of procurement actions for Fiscal Year (FY) 1987 and FY 1986 are shown for all of DOD in Table 1 and for its military components only in Table 2. These tables also provide, for comparison purposes, data for the fourth quarter of FY 1987 and FY 1986. The total net value of military procurement actions for FY 1987 (presented in Table 2) are displayed according to defense component in Table 3. Table 4 displays the total net value of military procurement actions for FY 1985 through FY 1987. Data on the total net value of civil functions procurement actions for FY 1985 through FY 1987 are provided in Table 5.

NOTES ON COVERAGE

Data in this report reflect the net value of debit and credit procurement actions over \$25,000, i.e., terminations, price changes, or other downward adjustments which are deducted from a contractor's total award amount, while modifications and other positive adjustments are treated as increases. Procurement actions include definitive contracts; the obligated portions of letter contracts; and job orders, task orders, delivery orders, or any other orders against existing contracts. Contracts for research and development, services, construction, and supplies and equipment are included. Contracts awarded by DOD to other Government agencies as intragovernmental orders and foreign military sales (reimbursable sales to foreign governments) are also included.

The data base from which information for this report is collected does not include data on those parts of indefinite quantity contracts (except for petroleum products) that have not been translated into specific orders to businesses, those contracts that have not yet become mutually binding agreements between the Government and the contractor, or prime contracts awarded by other U.S. government agencies and financed with DOD funds.

Totals

The United States total in the tables includes all contracts awarded for work performed in the United States. The United States as used here includes the 50 states, the District of Columbia, U.S. possessions, the Commonwealth of Puerto Rico, the Trust Territories of the Pacific, and other areas subject to complete U.S. sovereignty.

The subtotal "Not Distributed by State" includes all contract actions of \$25,000 or less for performance in the United States. This subtotal also includes all contract actions, regardless of size, for performance in the U.S. possessions, the Commonwealth of Puerto Rico, the Trust Territories of the Pacific, and other areas subject to complete U.S. sovereignty, and all contract actions for performance in classified locations.

State subtotals include the net value of procurement actions over \$25,000 awarded to each state and the District of Columbia.

Location of Contracts

Contract work is not necessarily performed in the state where the contract is awarded. Most manufacturing contracts have been attributed to the contractor's location where the product will be processed and assembled. When contract work has been performed at more than one plant, the contract has been attributed to the location where the largest dollar amount of work was produced. Both construction and service contracts have been attributed to the state where the work is to be performed. Contracts for transportation and communications services have been attributed to the state where the contractor's home office is located. For purchases from wholesale or other distribution firms, the location is the contractor's business address.

HIGHLIGHTS

There has been a slight decline in total DOD procurement for prime contract awards in the United States since FY 1985. Total prime contract awards in the United States for Fiscal Year 1987 totaled \$147,146.2 million, a decrease of \$2,138.1 million or -1.4 percent from FY 1986. One year earlier, total prime contract awards in the United States for Fiscal Year 1986 totaled \$149,284.2 million, a decrease of \$4,247.2 million or -2.8 percent from FY 1985. The state that showed the largest dollar amount of change was California with a decrease of \$3,223.2 million or -11.6 percent. While California maintains the highest DOD procurement percentage among the states, its percentage has fallen to 18.4 percent in FY 1987 from 20.4 percent in FY 1986 and from 20.8 percent in FY 1985.

In FY 1987, procurement decreased in twenty-six states (median decrease -\$154.4 million) and increased in twenty-five states (median increase of \$133.4 million). Overall, the average and median change of procurement for all states in FY 1987 was -\$54.2 million and -\$2.2 million, respectively. The following ten states had the largest amount of procurement award dollar change from FY 1986 to FY 1987 (shown from largest increase or decrease to smallest increase or decrease):

(AMOUNTS IN THOUSANDS OF DOLLARS)

STATE	FY 1987 AMOUNT	AMOUNT OF INCREASE OR DECREASE FROM FY 1986	PERCENT OF CHANGE FROM FY 1986
CALIFORNIA	\$24,514,511	\$ -3,223,239	-11.6
VIRGINIA	7,807,482	2,405,456	44.5
TEXAS	8,654,123	-2,286,104	-20.9
COLORADO	2,716,215	819,230	43.2
KANSAS	1,244,903	-709,603	-36.3
OHIO	4,549,702	-651,225	-12.5
WASHINGTON	3,112,025	586,775	23.2
ARIZONA	3,210,836	578,437	22.0
MICHIGAN	1,865,981	-487,121	-20.7
UTAH	1,183,069	468,921	65.7

**Table 1. Net Value and Percent Distribution of DoD Procurement
Actions, by State: FY 1987, FY 1986, and Fourth Quarters
FY 1987 and FY 1986^{1,2}**

(Amounts in Thousands)

STATE	FISCAL YEAR TO DATE				THREE MONTH PERIOD			
	1987 (OCT 86-SEP 87)		1986 (OCT 85-SEP 86)		FISCAL YEAR 1987 (JUL-SEP 1987)		FISCAL YEAR 1986 (JUL-SEP 1986)	
	AMOUNT	PERCENT	AMOUNT	PERCENT	AMOUNT	PERCENT	AMOUNT	PERCENT
TOTAL, U.S.	\$147,146,150		\$149,284,206		\$51,507,798		\$47,379,297	
NOT DISTRIBUTED BY STATE	13,883,787		13,258,078		4,875,604		4,770,498	
STATE TOTALS	133,262,363	100.0	136,026,128	100.0	46,632,194	100.0	42,608,799	100.0
Alabama	1,660,857	1.2	1,603,851	1.2	512,237	1.1	527,969	1.2
Alaska	555,074	0.4	564,681	0.4	203,747	0.4	239,399	0.6
Arizona	3,210,836	2.4	2,632,399	1.9	854,654	1.8	1,441,780	3.4
Arkansas	737,852	0.6	886,697	0.7	141,091	0.3	114,337	0.3
California	24,514,511	18.4	27,737,750	20.4	9,719,525	20.8	8,108,577	19.0
Colorado	2,716,215	2.0	1,896,985	1.4	842,762	1.8	721,432	1.7
Connecticut	5,030,505	3.8	5,441,063	4.0	2,255,017	4.8	1,534,150	3.6
Delaware	197,945	0.1	224,478	0.2	42,699	0.1	34,629	0.1
District of Columbia	1,271,879	1.0	956,793	0.7	657,687	1.4	326,390	0.8
Florida	5,797,498	4.4	5,664,138	4.2	1,694,452	3.6	1,783,309	4.2
Georgia	3,512,483	2.6	3,764,109	2.8	750,031	1.6	640,295	1.5
Hawaii	461,449	0.3	562,843	0.4	197,913	0.4	245,792	0.6
Idaho	74,157	0.1	62,910	*	18,079	*	24,435	0.1
Illinois	1,924,355	1.4	1,734,752	1.3	863,310	1.9	604,371	1.4
Indiana	2,230,767	1.7	2,490,142	1.8	679,357	1.5	1,174,520	2.8
Iowa	600,094	0.5	579,819	0.4	336,870	0.7	265,995	0.6
Kansas	1,244,903	0.9	1,954,506	1.4	458,411	1.0	910,952	2.1
Kentucky	462,067	0.3	557,188	0.4	190,134	0.4	135,677	0.3
Louisiana	1,685,391	1.3	1,497,656	1.1	532,590	1.1	304,359	0.7
Maine	830,458	0.6	584,195	0.4	476,808	1.0	94,481	0.2
Maryland	4,752,454	3.6	4,536,515	3.3	1,694,026	3.6	2,017,200	4.7
Massachusetts	8,685,102	6.5	8,734,860	6.4	2,327,615	5.0	1,984,908	4.7
Michigan	1,865,981	1.4	2,353,102	1.7	837,777	1.8	860,117	2.0
Minnesota	2,426,194	1.8	2,354,596	1.7	755,569	1.6	1,086,888	2.6
Mississippi	1,473,722	1.1	1,633,739	1.2	474,091	1.0	924,140	2.2
Missouri	5,996,537	4.5	5,547,581	4.1	2,361,299	5.1	1,440,923	3.4
Montana	93,489	0.1	62,000	*	43,389	0.1	13,127	*
Nebraska	256,702	0.2	225,595	0.2	91,637	0.2	93,406	0.2
Nevada	232,119	0.2	141,419	0.1	83,691	0.2	50,042	0.1
New Hampshire	468,940	0.4	471,171	0.3	294,089	0.6	234,561	0.6
New Jersey	3,282,518	2.5	3,226,454	2.4	1,465,479	3.1	1,202,496	2.8
New Mexico	583,669	0.4	565,072	0.4	224,965	0.5	135,968	0.3
New York	9,624,803	7.2	9,908,384	7.3	2,988,025	6.4	2,498,631	5.9
North Carolina	1,242,663	0.9	1,049,033	0.8	540,989	1.2	490,671	1.2
North Dakota	158,329	0.1	229,223	0.2	50,624	0.1	94,219	0.2
Ohio	4,549,702	3.4	5,200,927	3.8	1,123,762	2.4	1,474,787	3.5
Oklahoma	607,866	0.5	774,616	0.6	254,259	0.5	296,629	0.7
Oregon	286,582	0.2	340,069	0.3	82,780	0.2	185,432	0.4
Pennsylvania	3,844,665	2.9	4,191,663	3.1	1,197,212	2.6	1,159,190	2.7
Rhode Island	477,934	0.4	393,572	0.3	115,823	0.2	128,934	0.3
South Carolina	571,069	0.4	521,073	0.4	203,565	0.4	218,521	0.5
South Dakota	57,559	*	127,633	0.1	27,198	0.1	24,129	0.1
Tennessee	985,921	0.7	1,156,601	0.9	201,347	0.4	216,092	0.5
Texas	8,654,123	6.5	10,940,227	8.0	3,431,021	7.4	2,730,327	6.4
Utah	1,183,069	0.9	714,148	0.5	469,035	1.0	291,084	0.7
Vermont	113,256	0.1	123,611	0.1	64,024	0.1	61,536	0.1
Virginia	7,807,482	5.9	5,402,026	4.0	2,780,525	6.0	2,244,374	5.3
Washington	3,112,025	2.3	2,525,250	1.9	659,790	1.4	708,233	1.7
West Virginia	150,068	0.1	105,445	0.1	39,213	0.1	36,289	0.1
Wisconsin	951,146	0.7	981,416	0.7	276,276	0.6	445,673	1.0
Wyoming	47,378	*	92,152	0.1	45,725	0.1	27,423	0.1

1 For clarification on the limitations and conditions of coverage, see the introduction.

2 All figures include civil functions procurement actions. See Table 5.

Note: An asterisk in the percent column represents a figure of less than 0.05 percent. Percentages may not add up due to rounding.

**Table 2. Net Value and Percent Distribution of DoD Military Procurement
Actions, by State: FY 1987, FY 1986, and Fourth Quarters
FY 1987 and FY 1986¹**

(Amounts in Thousands)

STATE	FISCAL YEAR TO DATE				THREE MONTH PERIOD			
	1987 (OCT 86-SEP 87)		1986 (OCT 85-SEP 86)		FISCAL YEAR 1987 (JUL-SEP 1987)		FISCAL YEAR 1986 (JUL-SEP 1986)	
	AMOUNT	PERCENT	AMOUNT	PERCENT	AMOUNT	PERCENT	AMOUNT	PERCENT
TOTAL, U.S.	\$145,181,003		\$147,577,932		\$50,784,128		\$46,797,043	
NOT DISTRIBUTED BY STATE	13,554,944		12,960,696		4,768,911		4,665,294	
STATE TOTALS	131,626,059	100.0	134,617,236	100.0	46,015,217	100.0	42,131,749	100.0
Alabama	1,608,895	1.2	1,563,148	1.2	503,873	1.1	521,359	1.2
Alaska	527,037	0.4	555,473	0.4	194,212	0.4	235,207	0.6
Arizona	3,184,190	2.4	2,632,077	2.0	833,325	1.8	1,441,593	3.4
Arkansas	696,504	0.5	854,251	0.6	128,173	0.3	106,499	0.3
California	24,429,660	18.6	27,659,508	20.5	9,682,497	21.0	8,059,119	19.1
Colorado	2,714,461	2.1	1,892,848	1.4	842,085	1.8	719,502	1.7
Connecticut	5,029,522	3.8	5,439,058	4.0	2,254,327	4.9	1,533,726	3.6
Delaware	188,692	0.1	221,478	0.2	42,447	0.1	32,229	0.1
District of Columbia	1,261,185	1.0	947,540	0.7	656,465	1.4	325,613	0.8
Florida	5,732,656	4.4	5,629,387	4.2	1,678,703	3.6	1,776,174	4.2
Georgia	3,457,797	2.6	3,727,999	2.8	717,772	1.6	618,533	1.5
Hawaii	454,261	0.3	561,989	0.4	191,605	0.4	245,370	0.6
Idaho	64,318	*	53,337	*	17,888	*	21,899	0.1
Illinois	1,823,474	1.4	1,610,614	1.2	814,431	1.8	589,647	1.4
Indiana	2,227,744	1.7	2,484,268	1.8	677,851	1.5	1,173,193	2.8
Iowa	594,629	0.5	562,138	0.4	334,992	0.7	254,716	0.6
Kansas	1,239,903	0.9	1,950,682	1.4	457,734	1.0	910,068	2.2
Kentucky	425,273	0.3	497,908	0.4	177,757	0.4	125,708	0.3
Louisiana	1,468,815	1.1	1,270,377	0.9	477,371	1.0	257,541	0.6
Maine	827,082	0.6	583,606	0.4	473,822	1.0	94,451	0.2
Maryland	4,712,445	3.6	4,510,060	3.4	1,683,216	3.7	2,002,319	4.8
Massachusetts	8,675,284	6.6	8,726,846	6.5	2,325,022	5.1	1,979,821	4.7
Michigan	1,843,748	1.4	2,324,147	1.7	829,459	1.8	849,635	2.0
Minnesota	2,400,681	1.8	2,328,062	1.7	746,442	1.6	1,073,259	2.5
Mississippi	1,375,028	1.0	1,553,596	1.2	430,349	0.9	896,099	2.1
Missouri	5,947,845	4.5	5,517,604	4.1	2,342,234	5.1	1,430,453	3.4
Montana	92,770	0.1	59,931	*	43,039	0.1	12,768	*
Nebraska	247,689	0.2	213,342	0.2	85,610	0.2	85,405	0.2
Nevada	232,024	0.2	141,054	0.1	83,691	0.2	49,934	0.1
New Hampshire	468,316	0.4	469,308	0.3	293,924	0.6	233,665	0.6
New Jersey	3,220,703	2.4	3,201,064	2.4	1,453,785	3.2	1,181,842	2.8
New Mexico	577,750	0.4	562,148	0.4	224,406	0.5	134,413	0.3
New York	9,591,185	7.3	9,878,201	7.3	2,965,957	6.4	2,476,144	5.9
North Carolina	1,210,335	0.9	1,019,872	0.8	520,983	1.1	476,382	1.1
North Dakota	154,304	0.1	223,773	0.2	49,427	0.1	91,682	0.2
Ohio	4,516,486	3.4	5,170,561	3.8	1,116,952	2.4	1,465,168	3.5
Oklahoma	588,416	0.4	754,849	0.6	248,219	0.5	290,594	0.7
Oregon	229,733	0.2	282,862	0.2	64,308	0.1	169,809	0.4
Pennsylvania	3,773,961	2.9	4,153,542	3.1	1,165,656	2.5	1,138,994	2.7
Rhode Island	476,974	0.4	392,419	0.3	115,823	0.3	128,232	0.3
South Carolina	561,207	0.4	507,345	0.4	199,033	0.4	213,172	0.5
South Dakota	49,914	*	123,403	0.1	22,858	*	22,837	0.1
Tennessee	957,219	0.7	1,126,894	0.8	187,244	0.4	199,742	0.5
Texas	8,544,786	6.5	10,847,791	8.1	3,383,207	7.4	2,704,382	6.4
Utah	1,182,706	0.9	713,063	0.5	468,736	1.0	290,514	0.7
Vermont	112,933	0.1	122,453	0.1	63,849	0.1	60,872	0.1
Virginia	7,757,218	5.9	5,370,268	4.0	2,755,310	6.0	2,237,506	5.3
Washington	3,060,467	2.3	2,487,630	1.8	643,763	1.4	696,931	1.7
West Virginia	124,166	0.1	72,497	0.1	27,906	0.1	28,271	0.1
Wisconsin	937,393	0.7	973,108	0.7	271,747	0.6	441,475	1.0
Wyoming	46,275	*	91,857	0.1	45,732	0.1	27,282	0.1

¹ For clarification on the limitations and conditions of coverage, see the introduction.

Note: An asterisk in the percent column represents a figure of less than 0.05 percent. Percentages may not add up due to rounding.

Table 3. Net Value and Percent Distribution of DoD Military Procurement Actions, by State, According to Defense Component: FY 1987¹

(Amounts in Thousands)

STATE	TOTAL ²		ARMY	NAVY	AIR FORCE	DEFENSE LOGISTICS AGENCY
	AMOUNT	PERCENT				
TOTAL, U.S.	\$145,181,003		\$33,150,045	\$53,541,935	\$44,661,301	\$9,692,401
NOT DISTRIBUTED BY STATE	13,554,944		3,883,769	3,598,596	3,624,296	2,203,206
STATE TOTALS	131,626,059	100.0	29,266,277	49,943,339	41,037,005	7,489,195
Alabama	1,608,895	1.2	1,086,269	113,450	234,922	143,592
Alaska	527,037	0.4	186,249	97,645	160,888	63,442
Arizona	3,184,190	2.4	1,557,191	550,898	959,347	30,192
Arkansas	696,504	0.5	348,134	200,164	87,423	60,672
California	24,429,660	18.6	3,734,565	10,429,669	8,315,630	1,250,675
Colorado	2,714,461	2.1	308,417	317,359	2,009,048	18,071
Connecticut	5,029,522	3.8	1,245,628	2,893,672	791,486	93,049
Delaware	188,692	0.1	33,524	19,538	25,482	110,105
District of Columbia	1,261,185	1.0	150,243	769,856	151,243	46,765
Florida	5,732,656	4.4	1,287,135	1,145,623	3,113,639	78,789
Georgia	3,457,797	2.6	424,109	246,118	2,680,202	99,058
Hawaii	454,261	0.3	140,373	230,473	61,466	13,216
Idaho	64,318	*	31,165	4,638	14,967	13,433
Illinois	1,823,474	1.4	525,473	269,624	701,279	265,504
Indiana	2,227,744	1.7	1,265,608	319,064	512,784	127,679
Iowa	594,629	0.5	24,314	141,447	234,940	192,258
Kansas	1,239,903	0.9	288,864	75,968	850,946	22,332
Kentucky	425,273	0.3	207,883	19,735	19,980	177,462
Louisiana	1,468,815	1.1	268,393	895,253	30,396	274,477
Maine	827,082	0.6	36,810	746,980	24,274	18,813
Maryland	4,712,445	3.6	590,930	2,032,958	1,279,205	81,399
Massachusetts	8,675,284	6.6	3,381,682	2,680,314	2,264,997	152,815
Michigan	1,843,748	1.4	971,048	334,849	348,156	158,910
Minnesota	2,400,681	1.8	642,177	1,248,578	320,241	70,161
Mississippi	1,375,028	1.0	290,551	884,417	76,646	122,490
Missouri	5,947,845	4.5	692,571	3,588,138	1,558,077	81,414
Montana	92,770	0.1	61,205	541	20,240	10,819
Nebraska	247,689	0.2	49,242	10,894	122,882	51,333
Nevada	232,024	0.2	57,027	82,957	71,003	14,438
New Hampshire	468,316	0.4	61,950	265,486	119,148	13,743
New Jersey	3,220,703	2.4	692,976	1,474,746	674,481	297,759
New Mexico	577,750	0.4	210,132	39,237	296,520	13,209
New York	9,591,185	7.3	778,533	5,905,497	2,115,649	463,386
North Carolina	1,210,335	0.9	329,736	483,737	109,662	175,482
North Dakota	154,304	0.1	80,865	202	50,030	22,703
Ohio	4,516,486	3.4	1,343,227	627,106	2,284,208	248,605
Oklahoma	588,416	0.4	217,154	45,111	198,395	126,082
Oregon	229,733	0.2	69,686	74,017	43,210	32,004
Pennsylvania	3,773,961	2.9	1,259,143	1,392,876	590,694	409,417
Rhode Island	476,974	0.4	12,914	401,794	18,121	27,760
South Carolina	561,207	0.4	132,617	213,819	58,873	149,428
South Dakota	49,914	*	18,880	542	19,792	10,847
Tennessee	957,219	0.7	320,083	83,438	369,471	177,223
Texas	8,544,786	6.5	1,501,052	1,817,781	4,149,195	1,001,533
Utah	1,182,706	0.9	114,500	247,300	749,293	34,679
Vermont	112,933	0.1	10,708	51,204	44,550	6,471
Virginia	7,757,218	5.9	1,243,562	5,182,675	582,833	171,028
Washington	3,060,467	2.3	388,750	1,128,525	1,448,374	80,076
West Virginia	124,166	0.1	40,959	53,384	6,259	23,496
Wisconsin	937,393	0.7	539,141	103,168	133,524	151,997
Wyoming	46,275	*	13,129	872	17,326	14,904

¹ For clarification on the limitations and conditions of coverage, see the introduction.

² Total includes all departments shown, plus other Defense agencies.

Note: An asterisk in the percent column represents a figure of less than 0.05 percent. Percentages may not add up due to rounding.

Table 4. Net Value and Percent Distribution of DoD Military Procurement Actions, by State: FY 1987, FY 1986, and FY 1985¹

(Amounts in Thousands)

STATE	FISCAL YEAR 1987		FISCAL YEAR 1986		FISCAL YEAR 1985	
	AMOUNT	PERCENT	AMOUNT	PERCENT	AMOUNT	PERCENT
TOTAL, U.S.	\$145,181,003		\$147,577,932		\$151,771,621	
NOT DISTRIBUTED BY STATE	13,554,944		12,960,696		13,175,642	
STATE TOTALS	131,626,059	100.0	134,617,236	100.0	138,595,979	100.0
Alabama	1,608,895	1.2	1,563,148	1.2	1,378,999	1.0
Alaska	527,037	0.4	555,473	0.4	518,669	0.4
Arizona	3,184,190	2.4	2,632,077	2.0	2,000,414	1.4
Arkansas	696,504	0.5	854,251	0.6	783,768	0.6
California	24,429,660	18.6	27,659,508	20.5	29,036,422	21.0
Colorado	2,714,461	2.1	1,892,848	1.4	1,558,852	1.1
Connecticut	5,029,522	3.8	5,439,058	4.0	5,540,829	4.0
Delaware	188,692	0.1	221,478	0.2	259,236	0.2
District of Columbia	1,261,185	1.0	947,540	0.7	1,090,448	0.8
Florida	5,732,656	4.4	5,629,387	4.2	5,229,226	3.8
Georgia	3,457,797	2.6	3,727,999	2.8	3,461,051	2.5
Hawaii	454,261	0.3	561,989	0.4	616,884	0.4
Idaho	64,318	*	53,337	*	40,653	*
Illinois	1,823,474	1.4	1,610,614	1.2	1,585,167	1.1
Indiana	2,227,744	1.7	2,484,268	1.8	3,172,026	2.3
Iowa	594,629	0.5	562,138	0.4	576,271	0.4
Kansas	1,239,903	0.9	1,950,682	1.4	2,130,180	1.5
Kentucky	425,273	0.3	497,908	0.4	477,717	0.3
Louisiana	1,468,815	1.1	1,270,377	0.9	1,939,863	1.4
Maine	827,082	0.6	583,606	0.4	955,447	0.7
Maryland	4,712,445	3.6	4,510,060	3.4	4,578,676	3.3
Massachusetts	8,675,284	6.6	8,726,846	6.5	7,707,010	5.6
Michigan	1,843,748	1.4	2,324,147	1.7	2,770,422	2.0
Minnesota	2,400,681	1.8	2,328,062	1.7	2,277,859	1.6
Mississippi	1,375,028	1.0	1,553,596	1.2	1,212,887	0.9
Missouri	5,947,845	4.5	5,517,604	4.1	7,559,771	5.5
Montana	92,770	0.1	59,931	*	99,678	0.1
Nebraska	247,689	0.2	213,342	0.2	181,661	0.1
Nevada	232,024	0.2	141,054	0.1	127,481	0.1
New Hampshire	468,316	0.4	469,308	0.3	677,730	0.5
New Jersey	3,220,703	2.4	3,201,064	2.4	3,831,795	2.8
New Mexico	577,750	0.4	562,148	0.4	489,569	0.4
New York	9,591,185	7.3	9,878,201	7.3	10,007,004	7.2
North Carolina	1,210,335	0.9	1,019,872	0.8	994,162	0.7
North Dakota	154,304	0.1	223,773	0.2	202,702	0.1
Ohio	4,516,486	3.4	5,170,561	3.8	4,613,821	3.3
Oklahoma	588,416	0.4	754,849	0.6	583,653	0.4
Oregon	229,733	0.2	282,862	0.2	194,950	0.1
Pennsylvania	3,773,961	2.9	4,153,542	3.1	4,122,966	3.0
Rhode Island	476,974	0.4	392,419	0.3	428,167	0.3
South Carolina	561,207	0.4	507,345	0.4	464,441	0.3
South Dakota	49,914	*	123,403	0.1	75,048	0.1
Tennessee	957,219	0.7	1,126,894	0.8	749,061	0.5
Texas	8,544,786	6.5	10,847,791	8.1	10,451,631	7.5
Utah	1,182,706	0.9	713,063	0.5	788,102	0.6
Vermont	112,933	0.1	122,453	0.1	161,276	0.1
Virginia	7,757,218	5.9	5,370,268	4.0	6,151,866	4.4
Washington	3,060,467	2.3	2,487,630	1.8	3,498,041	2.5
West Virginia	124,166	0.1	72,497	0.1	58,302	*
Wisconsin	937,393	0.7	973,108	0.7	1,059,646	0.8
Wyoming	46,275	*	91,857	0.1	124,449	0.1

¹ For clarification on the limitations and conditions of coverage, see the introduction.
 Note: An asterisk in the percent column represents a figure of less than 0.05 percent. Percentages may not add up due to rounding.

Table 5. Net Value and Percent Distribution of DoD Civil Functions Procurement Actions, by State: FY 1987, FY 1986, and FY 1985 ^{1,2}

(Amounts in Thousands)

STATE	FISCAL YEAR 1987		FISCAL YEAR 1986		FISCAL YEAR 1985	
	AMOUNT	PERCENT	AMOUNT	PERCENT	AMOUNT	PERCENT
TOTAL, U.S.	\$1,965,147		\$1,706,274		\$1,759,822	
NOT DISTRIBUTED BY STATE	328,843		297,382		259,520	
STATE TOTALS	1,636,304	100.0	1,408,892	100.0	1,500,302	100.0
Alabama	51,962	3.2	40,703	2.9	38,943	2.6
Alaska	28,037	1.7	9,208	0.7	31,734	2.1
Arizona	26,646	1.6	322	*	5,324	0.4
Arkansas	41,348	2.5	32,446	2.3	25,829	1.7
California	84,851	5.2	78,242	5.6	78,144	5.2
Colorado	1,754	0.1	4,137	0.3	4,519	0.3
Connecticut	983	0.1	2,005	0.1	2,619	0.2
Delaware	9,253	0.6	3,000	0.2	2,172	0.1
District of Columbia	10,694	0.7	9,253	0.7	13,101	0.9
Florida	64,842	4.0	34,751	2.5	42,013	2.8
Georgia	54,686	3.3	36,110	2.6	59,278	4.0
Hawaii	7,188	0.4	854	0.1	9,269	0.6
Idaho	9,839	0.6	9,573	0.7	9,777	0.7
Illinois	100,881	6.2	124,138	8.8	108,227	7.2
Indiana	3,023	0.2	5,874	0.4	4,746	0.3
Iowa	5,465	0.3	17,681	1.3	13,491	0.9
Kansas	5,000	0.3	3,824	0.3	8,754	0.6
Kentucky	36,794	2.2	59,280	4.2	27,794	1.9
Louisiana	216,576	13.2	227,279	16.1	235,508	15.7
Maine	3,376	0.2	589	*	1,306	0.1
Maryland	40,009	2.4	26,455	1.9	29,430	2.0
Massachusetts	9,818	0.6	8,014	0.6	6,536	0.4
Michigan	22,233	1.4	28,955	2.1	18,580	1.2
Minnesota	25,513	1.6	26,534	1.9	20,059	1.3
Mississippi	98,694	6.0	80,143	5.7	96,766	6.4
Missouri	48,692	3.0	29,977	2.1	52,942	3.5
Montana	719	*	2,069	0.1	2,305	0.2
Nebraska	9,013	0.6	12,253	0.9	11,799	0.8
Nevada	95	*	365	*	134	*
New Hampshire	624	*	1,863	0.1	458	*
New Jersey	61,815	3.8	25,390	1.8	30,347	2.0
New Mexico	5,919	0.4	2,924	0.2	2,715	0.2
New York	33,618	2.1	30,183	2.1	25,698	1.7
North Carolina	32,328	2.0	29,161	2.1	34,399	2.3
North Dakota	4,025	0.2	5,450	0.4	3,833	0.3
Ohio	33,216	2.0	30,366	2.2	34,506	2.3
Oklahoma	19,450	1.2	19,767	1.4	18,725	1.2
Oregon	56,849	3.5	57,207	4.1	60,935	4.1
Pennsylvania	70,704	4.3	38,121	2.7	25,762	1.7
Rhode Island	960	0.1	1,153	0.1	3,102	0.2
South Carolina	9,862	0.6	13,728	1.0	25,845	1.7
South Dakota	7,645	0.5	4,230	0.3	2,498	0.2
Tennessee	28,702	1.8	29,707	2.1	44,359	3.0
Texas	109,337	6.7	92,436	6.6	109,925	7.3
Utah	363	*	1,085	0.1	692	*
Vermont	323	*	1,158	0.1	2,153	0.1
Virginia	50,264	3.1	31,758	2.3	14,902	1.0
Washington	51,558	3.2	37,620	2.7	61,323	4.1
West Virginia	25,902	1.6	32,948	2.3	32,034	2.1
Wisconsin	13,753	0.8	8,308	0.6	4,855	0.3
Wyoming	1,103	0.1	295	*	137	*

1 For clarification on the limitations and conditions of coverage, see the introduction.

2 Data in this table include civil functions procurement actions of the Corps of Engineers, Department of the Army, involving flood control and river and harbor work. (Civil functions procurement actions are also included in the data in Table 1.)

Note: An asterisk in the percent column represents a figure of less than 0.05 percent. Percentages may not add up due to rounding.

END

FILMED

MARCH, 19 88

DTIC