

AD-A188 771

WORLDWIDE DISTRIBUTIONS OF SHIPBOARD SURFACE  
METEOROLOGICAL OBSERVATIONS FOR EM PROPAGATION ANALYSIS  
(U) NAVAL OCEAN SYSTEMS CENTER SAN DIEGO CA

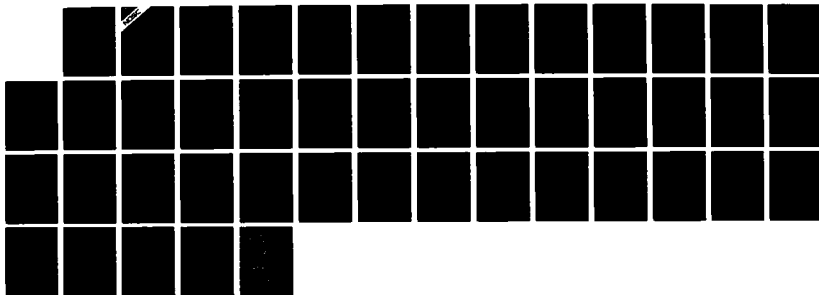
1/1

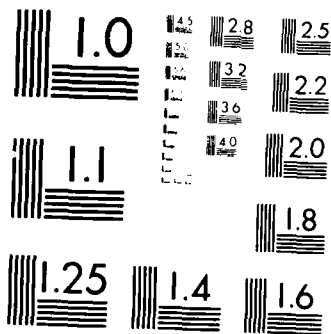
UNCLASSIFIED

K D ANDERSON SEP 87 NOSC/TD-1150

F/G 4/2

NL





MICROCOPY RESOLUTION TEST CHART  
NATIONAL BUREAU OF STANDARDS-1963-A

DTIC FILE COPY

NOSC TD 1150

# NOSC

NAVAL OCEAN SYSTEMS CENTER San Diego, California 92152-5000

4

NOSC TD 1150

Technical Document 1150  
September 1987

## Worldwide Distributions of Shipboard Surface Meteorological Observations for EM Propagation Analysis

K. D. Anderson

AD-A188 771



DTIC  
ELECTE  
DEC 16 1987  
S H D

Approved for public release. distribution is unlimited

87 12 10 006

**NAVAL OCEAN SYSTEMS CENTER**  
San Diego, California 92152-5000

---

**E. G. SCHWEIZER, CAPT, USN**  
Commander

**R. M. HILLYER**  
Technical Director

**ADMINISTRATIVE INFORMATION**

The work described in this report was completed for the Office of Naval Technology (ONT) by Code 543 of the Naval Ocean Systems Center.

Released by  
H.V. Hitney, Head  
Tropospheric Branch

Under authority of  
J.H. Richter, Head  
Ocean and Atmospheric Sciences  
Division

*AD-888 771*

**REPORT DOCUMENTATION PAGE**

1a REPORT SECURITY CLASSIFICATION <b>UNCLASSIFIED</b>		1b RESTRICTIVE MARKINGS	
2a SECURITY CLASSIFICATION AUTHORITY		3 DISTRIBUTION AVAILABILITY OF REPORT Approved for public release; distribution is unlimited.	
2b DECLASSIFICATION/DOWNGRADING SCHEDULE			
4 PERFORMING ORGANIZATION REPORT NUMBER(S) NOSC TD 1150		5 MONITORING ORGANIZATION REPORT NUMBER(S)	
6a NAME OF PERFORMING ORGANIZATION Naval Ocean Systems Center	6b OFFICE SYMBOL <i>if applicable:</i>	7a NAME OF MONITORING ORGANIZATION	
7a ADDRESS (City, State and ZIP Code) San Diego, CA 92152-5000		7b ADDRESS (City, State and ZIP Code)	
8a NAME OF FUNDING/SPONSORING ORGANIZATION Office of Naval Technology	8b OFFICE SYMBOL <i>if applicable:</i> ONT	9 PROCUREMENT INSTRUMENT IDENTIFICATION NUMBER	
8c ADDRESS (City, State and ZIP Code) Arlington, VA 22217		10 SOURCE OF FUNDING NUMBERS	
		PROGRAM ELEMENT NO 62435N	PROJECT NO SXB3
		TASK NO	AGENCY ACCESSION NO DN888 715
11 TITLE (include Security Classification) Worldwide Distributions of Shipboard Surface Meteorological Observations for EM Propagation Analysis			
12 PERSONAL AUTHOR K.D. Anderson			
13a TYPE OF REPORT Final	13b TIME COVERED FROM 1970 TO 1984	14 DATE OF REPORT Year Month Day September 1987	15 PAGE COUNT 46
16 SUPPLEMENTARY NOTES			
17a SUBJECT TERMS		17b SUBJECT TERMS (continued from 17a, if necessary, and identify by block number)	
FIELD	GROUP	SUB GROUP	
		Marsden squares	
		meteorological observations	
		period of record (POR)	
18 ABSTRACT (include page range of abstract, if necessary, and identify by block number)  The Naval Ocean Systems Center (NOSC) sponsored the National Climatic Data Center, Asheville, North Carolina to produce a subset analysis of its Standard Tape Deck Family 11 (STD-11) database.			
19a FORM AND APPLICABLE ANNOUNCEMENT		19b FORM AND SECURITY CLASSIFICATION	
<input type="checkbox"/> UNCLASSIFIED NUMBER	<input checked="" type="checkbox"/> JAMA REPORT	<b>UNCLASSIFIED</b>	
20 AUTHOR (include block number) K.D. Anderson		21 TELEPHONE (include extension) (619)225-7247	22 OFFICE SYMBOL Code 543



## BACKGROUND

The Naval Ocean Systems Center (NOSC) sponsored the National Climatic Data Center, Asheville, North Carolina to produce a subset analysis of its Standard Tape Deck Family 11 (STD-11) database. The STD-11 database consists of over 150 years of worldwide surface meteorological observations such as wind speed, present weather, air temperature, and other meteorological quantities. These observations were assembled from ship logs, ship weather reporting forms, published ship observations, automatic buoys, teletype reports, and card decks purchased from foreign meteorological services.

The subset analysis, known as DUCT63, covers 293 Marsden squares and spans 15 years of surface observations from 1970 through 1984. A Marsden square is a region of the earth's surface defined by a grid of 10 degrees latitude by 10 degrees longitude and is assigned a unique identification number. Figure 1 shows the location and the numerical assignment of all Marsden squares. For example, Marsden square 1 is defined as the region bounded by the prime meridian to 10 degrees west longitude and from the equator to 10 degrees north latitude. Not all of the 648 possible Marsden squares are included in the DUCT63 analysis for two reasons. First, the analysis is specifically concerned with the maritime environment. Marsden squares not containing a region of ocean are excluded from the data. Second, a requirement of at least 100 valid observations per month was imposed to reduce the effects of any spurious meteorological measurements on the distributions. Figure 1 shows the location of the Marsden squares contained within the DUCT 63 analysis as the region enclosed by the heavy border.

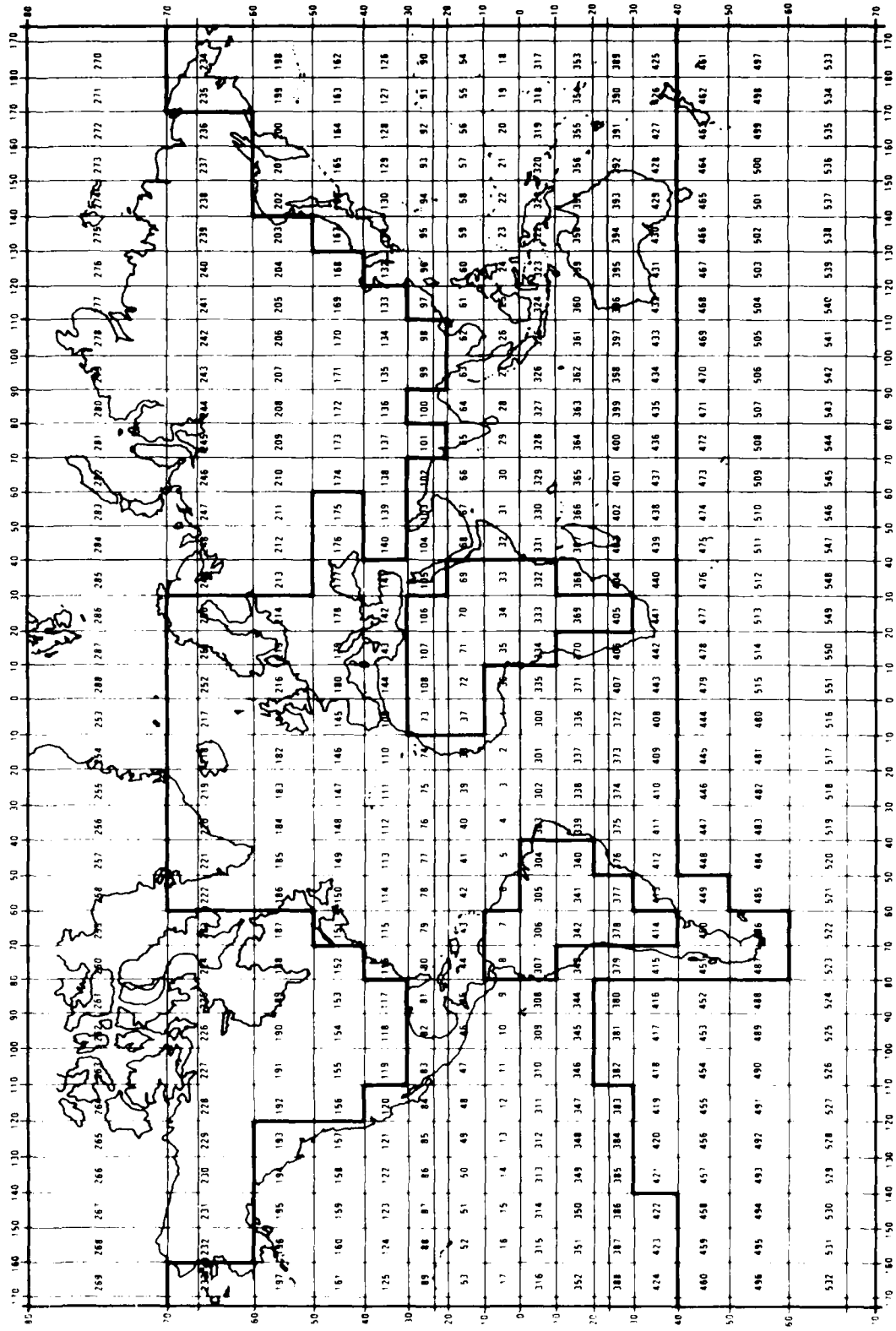


Figure 1. Geographical location of Marsden square data in the DUCT63 analysis.

## GENERAL DUCT63 DATABASE DESCRIPTION

The DUCT63 analysis contains distributions of meteorological quantities and surface-to-surface attenuation rates for frequencies of 35 and 94 GHz. These distributions are expressed as tables of either a probability or a percentage of time that the quantity is observed within a specified range. The distributions include diurnal effects where day or daytime categories imply a positive solar angle within the Marsden square at the time of the meteorological observation. Night categories are times of observation between one hour after the local sunset and one hour before the local sunrise. Observations taken in the interval between the day and night categories are excluded from the data set.

There are two forms of distributions: a probability (or percent of time) distribution for a specific quantity (e.g., wind speed) and a joint probability distribution of two quantities. The latter form, also called a cross distribution, is specifically designed for use by NOSC in its research efforts.

Each page of tables is labeled with the Marsden square number and the period of record (POR). The POR is expressed as QQR-SSTT where QQ is the starting year, RR is the starting month, SS is the ending year and TT is the ending month. Generally, the POR is 7001-8412 indicating that the data is comprised of observations taken between January 1970 and December 1984. The probability distributions of specific quantities include the mean value of the quantity and the number of valid observations that the distribution is derived from. The cross distributions indicate the number of valid observations.

## DUCT63 DATABASE QUANTITIES

The following quantities are distributed within the DUCT63 analysis and are tabularized on microfiche in the same order:

- Paulus evaporation duct height (meters)
- Paulus evaporation duct height crossed with Jeske duct height
- Wind speed (meters per second)
- Absolute humidity (grams per cubic meter)
- Modified air-sea temperature difference (degree C)
- Rain rate (scaled millimeters per hour)
- Attenuation rate (gaseous) at 35 GHz (scaled dB km)
- Attenuation rate (gaseous) at 94 GHz (scaled dB km)
- Attenuation rate (total) at 35 GHz (scaled dB km)
- Attenuation rate (total) at 94 GHz (scaled dB km)
- Paulus evaporation duct height crossed with wind speed

The quantities of evaporation duct height and the modified air-sea temperature difference are tabularized only in connection to the general user of the data. Details of the specific quantities and their tabularization characteristics are described in the following paragraphs.

## PAULUS EVAPORATION DUCT HEIGHT

The Paulus formulation of evaporation duct height calculations (reference 1) is a modification to the classical Jeske method (reference 2). The major difference in the approaches is that the Paulus technique attempts to account for inaccuracies in air temperature observations which are caused by thermal influence of the ship. The distributions of duct height are in 2-meter intervals from 0 to 40 meters and two additional categories - duct heights greater than 40 meters and duct heights that are not calculable (undefined). Figures 2 through 4 are the results from Marsden square 1. Note the label indicating the mean sub square (mean sub sq) 25. Marsden squares are subdivided into 1-degree sub squares and this label (25) shows the mean location of all of the observations within the analysis for this square. Under each distribution are the values of the mean height and the first through third quartile. From figure 2, a duct height in the interval of 10 to 12 meters for a January day is observed 14.4 percent of the time (the probability is 0.144). The mean height of the duct for a March night period is 11.0 meters. There were 2,229 valid observations found in constructing the distribution for the April day period.

## PAULUS EVAPORATION DUCT HEIGHT CROSSED WITH JESKE DUCT HEIGHT

Figures 5 through 7 tabulate the joint probability of a duct height computed by the Paulus and Jeske methods for Marsden square 1. The distributions are in 2 meter intervals as described above. To obtain a reasonable format of the tables, the true probability is scaled by a factor 10,000. For example, the joint probability of finding a Paulus and Jeske duct height in the interval of 10 to 12 meters in Marsden square 1 during daylight hours is given in figure 5 as 0.0749. Also, the total number of valid observations used to construct figure 5 is given at the bottom of the table and is 23,552.

## WIND SPEED

Figures 8 through 10 show the distributions of wind speed, in meters per second (m/s), for Marsden square 1. From figure 8, the mean wind speed during January night conditions is 3.7 m/s which is derived from 1,739 valid observations. A wind speed between 5 and 6 m/s is observed 12.2 percent of the time during February daylight hours.

## ABSOLUTE HUMIDITY

Figures 11 through 13 show examples of absolute humidity distributions. The categories are in grams per cubic meter ( $\text{g m}^3$ ). During March daylight hours, the mean absolute humidity is  $22.6 \text{ g m}^3$ . Absolute humidity is observed 48.6 percent of the time for the interval 21 to 23  $\text{g m}^3$ .

## MODIFIED AIR-SEA TEMPERATURE DIFFERENCE

Reference 1 defines the modified air-sea temperature difference. Its purpose for inclusion within the DUC163 database is to aid NOSC research efforts in the climatological description of evaporation duct heights. Figures 14 through 16 show examples of the distribution format.

## **RAIN RATE**

Figures 17 through 19 show rain-rate distributions for Marsden square 1. Rain rate is not a directly reported quantity in the STD-11 database. Rather, it is computed from the present weather code by techniques developed by Goroch (reference 3). The categories of distribution are tabularized scaled by a factor of 100. From figure 17, the rain rate is reported to occur 0.4 percent of the time in the range of 1.26 to 1.51 millimeters per hour (mm/hr) during a January day time period. The mean rain rate for a March day time period is reported as 0.067 mm/hr and is derived from 1,712 reports of present weather.

## **GASEOUS ATTENUATION RATE AT 35 GHz**

Figures 20 through 22 are the distributions of gaseous attenuation rate at a frequency of 35 GHz for Marsden square 1. This quantity is derived from observations of air temperature, relative humidity, and visibility.

The reported visibility is used to calculate a value of the liquid water content based on the work of Johnson reported by Cook (reference 4). Methods described by Liebe (reference 5) are used to calculate the attenuation rate. Since the meteorological data is surface data, the attenuation rate is valid only for surface-to-surface propagation. It is not applicable for use with slant paths.

In the tables, the labeled attenuation rates are scaled by a factor of 1,000. From figure 20, the mean attenuation rate for a January night is 0.2593 dB/km. The distribution indicates that an attenuation rate between 0.226 and 0.251 dB/km is observed to occur 26.7 percent of the time.

## **GASEOUS ATTENUATION RATE AT 94 GHz**

The description above applies to the tables shown in figures 23 through 25 with two exceptions. First, the frequency is 94 GHz and second, the scaling factor is 100, not 1,000 as above. From figure 23, the surface-to-surface attenuation rate (at 94 GHz) is observed to fall between 1.01 and 1.26 dB/km 58.9 percent of the time during a February night period. The mean value is 1.24 dB/km.

## **TOTAL ATTENUATION AT 35 GHz**

The major difference between the attenuation rate described for this quantity and the attenuation rate described above is that the total attenuation includes the effects of rain rate. The contributions from rain rate are modeled after the work of Falcone (reference 6).

Figures 26 through 28 are the results for Marsden square 1. From figure 26, the mean attenuation rate for an April day period is 0.3028 dB/km (the categories are scaled by a factor of 1,000). The distribution for the same period indicates an attenuation rate between 0.251 and 0.276 dB/km is observed 50.7 percent of the time.

## **TOTAL ATTENUATION AT 94 GHz**

The comments of the preceding section are directly applicable for the total attenuation rate at 94 GHz. Again, it should be stressed that the meteorological data are observed at the surface and the attenuation rates described are strictly applicable to a surface-to-surface path. That is, the data are not applicable to a slant path.

Figures 29 through 31 present tables of the total attenuation rate at a frequency of 94 GHz for Marsden square 1. From figure 29, the attenuation rate for an April day period is observed 53.1 percent of the time in the interval 1.01 to 1.26 dB/km. The mean attenuation rate is 1.408 dB/km for the same period.

## **PAULUS DUCT HEIGHT CROSSED WITH WIND SPEED**

Similar to the cross distribution discussed previously, figures 32 through 34 present the cross distribution of the Paulus duct height and wind speed. These tables are designed primarily for use by NOSC in the determination of evaporation ducting.

MEAN DUCT HEIGHT: 1 MEAN SUB 50-25 PAULUS DUCT HEIGHT DISTRIBUTION FOR = 7001-8412 REV: 6.3

DUCT HEIGHT (METERS)	JANUARY		FEBRUARY		MARCH		APRIL		DUCT HEIGHT (METERS)
	DAY %	NIGHT %	DAY %	NIGHT %	DAY %	NIGHT %	DAY %	NIGHT %	
00-02	1.7	1.8	1.7	1.7	1.5	1.7	5	7	00-02
02-04	1.9	4.7	2.7	4.7	1.5	3.5	1.2	1.9	02-04
04-06	2.1	9.6	4.7	9.6	4.7	8.9	6.1	9.2	04-06
06-08	2.3	10.3	5.9	10.3	9.3	10.5	7.8	8.0	06-08
08-10	2.5	11.2	9.0	11.2	11.2	13.8	11.6	14.6	08-10
10-12	2.7	14.0	11.0	13.6	14.7	21.6	17.0	19.0	10-12
12-14	2.9	15.8	13.8	15.8	15.3	15.7	15.1	18.3	12-14
14-16	3.1	17.7	14.7	15.8	14.5	11.3	12.7	13.6	14-16
16-18	3.3	18.6	15.6	11.9	11.3	8.2	10.9	17.8	16-18
18-20	3.5	20.5	12.4	6.4	11.3	3.0	8.3	4.0	18-20
20-22	3.7	23.4	8.6	4.6	8.1	1.2	3.6	1.6	20-22
22-24	3.9	26.3	5.7	3.7	2.7	.3	2.2	.8	22-24
24-26	4.1	29.2	2.1	.0	.9	.0	1.1	.6	24-26
26-28	4.3	32.1	.9	.0	.9	.0	.8	.1	26-28
28-30	4.5	35.0	.1	.0	.2	.0	.4	.0	28-30
30-32	4.7	37.9	.0	.0	.0	.0	.0	.0	30-32
32-34	4.9	40.8	.0	.0	.0	.0	.0	.0	32-34
34-36	5.1	43.7	.0	.0	.0	.0	.0	.0	34-36
36-38	5.3	46.6	.0	.0	.0	.0	.0	.0	36-38
38-40	5.5	49.5	.0	.0	.0	.0	.0	.0	38-40
>= 40	5.7	52.4	.0	.0	.0	.0	.0	.0	>= 40
UNDEFINED	5.9	55.3	.0	.0	.0	.0	.0	.0	UNDEFINED

MEAN HEIGHT	1ST OIL HGT	2ND OIL HGT	3RD OIL HGT
10.9	11.1	11.0	11.7
8.2	7.7	8.0	8.7
11.0	11.2	11.1	11.7
13.6	14.3	13.9	14.5

VALID OBS: 1672 1739 1497 1617 1712 1443 2229 1055 VALID OBS

MAXIMUM DUCT HEIGHT SET TO: 50. METRES

Figure 2 Paulus evaporator on duct height.

MARDEN SQUARE: 1		MEAN SEB SQ-15				PAULUS DUCT HEIGHT DISTRIBUTION				FOR = 7001-8412		REV: 6.3	
DUCT HEIGHT (METERS)	DUCT HEIGHT (METERS)	MAY		JUNE		JULY		AUGUST		DUCT HEIGHT (METERS)			
		DAY %	NIGHT %	DAY %	NIGHT %	DAY %	NIGHT %	DAY %	NIGHT %	DAY %	NIGHT %	DAY %	NIGHT %
00-02		.4	2	.0	.8	1.4	3.0	2.5	2.9	00-02			
02-04		.7	1.4	1.1	1.2	2.6	4.2	3.1	5.0	02-04			
04-06		3.6	3.5	3.6	2.7	5.1	6.0	5.8	8.0	04-06			
06-08		6.2	5.2	6.3	7.7	6.1	9.3	9.3	12.7	06-08			
08-10		10.4	10.8	10.4	11.2	9.8	10.3	13.3	13.9	08-10			
10-12		14.6	15.4	13.3	15.3	11.0	14.0	15.6	15.9	10-12			
12-14		14.5	17.3	12.7	15.7	14.5	16.2	14.8	15.5	12-14			
14-16		13.9	17.5	13.0	15.4	13.9	15.4	12.9	11.5	14-16			
16-18		12.8	11.9	13.2	11.7	13.0	10.3	9.1	6.9	16-18			
18-20		9.7	8.6	11.4	8.8	8.3	6.0	6.6	4.8	18-20			
20-22		5.9	5.3	7.0	5.0	6.8	3.2	4.5	1.9	20-22			
22-24		4.0	1.9	5.0	2.6	4.0	1.3	1.6	.9	22-24			
24-26		1.7	.5	2.0	1.3	2.2	.5	.4	.2	24-26			
26-28		1.9	.0	2.9	1.6	.8	.3	.2	.0	26-28			
28-30		.5	.1	.2	.0	.2	.0	.2	.1	28-30			
30-32		.3	.2	.2	.0	.1	.0	.2	.0	30-32			
32-34		.1	.0	.1	.0	.0	.0	.0	.0	32-34			
34-36		.0	.0	.0	.0	.0	.0	.0	.0	34-36			
36-38		.0	.0	.0	.0	.0	.0	.0	.0	36-38			
38-40		.0	.0	.0	.0	.0	.0	.0	.0	38-40			
>= 40		.0	.0	.0	.0	.0	.0	.0	.0	>= 40			
UNDEFINED		.0	.0	.0	.0	.0	.0	.0	.0	UNDEFINED			
MEAN HGT:		14.3	13.5	14.6	13.6	13.8	12.0	12.2	10.9	MEAN HGT			
1ST QTL HGT:		10.5	10.5	10.6	10.2	10.0	8.5	8.6	7.4	1ST QTL HGT			
2ND QTL HGT:		14.0	13.5	14.5	13.4	13.9	12.4	12.1	10.9	2ND QTL HGT			
3RD QTL HGT:		17.7	16.6	18.3	16.9	17.6	15.6	15.6	14.2	3RD QTL HGT			
VALID OBS:		2671	1392	2456	1246	2302	1126	2542	1275	VALID OBS			
MAXIMUM DUCT HEIGHT SET TO:		50.	MEETRES										

Figure 3. Paulus evaporation duct height.

MISSION SQUARE: 1		MEAN SUB SQ=25		PAULUS DUCT HEIGHT DISTRIBUTION				FOR = 7001-8412		REV: 6.3	
DUCT HEIGHT (METERS)	SEPT DAY	SEPT NIGHT	OCT DAY	OCT NIGHT	NOV DAY	NOV NIGHT	DEC DAY	DEC NIGHT	DUCT HEIGHT (METERS)		
										MEAN HGT	MAXIMUM DUCT HEIGHT SET TO:
00-02	2.1	2.4	1.1	1.8	1.1	3.3	1.5	2.7	00-02		
02-04	4.0	4.3	1.2	1.8	1.1	1.1	1.5	1.7	02-04		
04-06	7.4	7.4	3.0	4.8	3.8	4.2	6.2	6.5	04-06		
06-08	9.4	13.5	5.5	8.8	5.9	9.1	8.7	7.9	06-08		
08-10	14.5	15.4	10.0	16.4	9.4	16.9	10.7	14.8	08-10		
10-12	13.8	19.5	13.3	19.6	16.5	22.2	15.1	24.4	10-12		
12-14	15.0	15.1	17.2	19.9	18.6	20.2	17.6	18.2	12-14		
14-16	13.3	11.5	16.5	17.1	18.1	14.6	14.6	12.8	14-16		
16-18	10.0	6.5	15.4	16.8	12.2	6.6	12.0	7.0	16-18		
18-20	5.3	2.5	8.6	2.5	7.2	3.3	6.3	3.7	18-20		
20-22	2.8	.8	5.1	1.5	3.5	3.9	3.1	1.5	20-22		
22-24	1.6	.6	1.9	1.5	2.0	.4	2.0	1.8	22-24		
24-26	.6	.1	.9	.2	.8	.2	.8	.2	24-26		
26-28	.2	.1	.3	.1	.3	.0	.4	.2	26-28		
28-30	.1	.2	.0	.0	.3	.0	.2	.1	28-30		
30-32	.0	.0	.1	.0	.0	.0	.2	.0	30-32		
32-34	.0	.0	.0	.0	.0	.1	.0	.0	32-34		
34-36	.0	.0	.0	.0	.0	.0	.0	.0	34-36		
36-38	.0	.0	.0	.0	.0	.0	.0	.0	36-38		
38-40	.0	.0	.0	.0	.0	.0	.0	.0	38-40		
>= 40	.0	.0	.0	.0	.0	.0	.0	.0	>= 40		
UNDEFINED	.0	.0	.0	.0	.0	.0	.0	.0	UNDEFINED		
MEAN HGT:	11.8	10.7	13.7	11.8	13.4	11.7	12.9	11.7	MEAN HGT		
1ST QTL HGT:	8.3	7.6	10.6	9.2	10.6	9.2	9.5	9.2	1ST QTL HGT		
2ND QTL HGT:	11.8	10.7	13.9	11.8	13.4	11.7	12.8	11.5	2ND QTL HGT		
3RD QTL HGT:	15.3	13.7	16.9	14.5	16.2	14.1	16.0	14.2	3RD QTL HGT		
VALID OBS:	2000	1412	1556	1942	1496	1871	1329	1606	VALID OBS		

Figure 4. Paulus evaporation duct height.

MAXIMUM DUCT HEIGHT SET TO: 50. METRES

MARSDEN SQUARE: 1  
 FOR: 7001-8412

PAULUS DUCT HEIGHT VS  
 JESKE DUCT HEIGHT

REVISION: 6.3

DUCT HEIGHT (M) <	PROBABILITY*1E4: DAYTIME																DUCT HEIGHT (M)					
	2-	4-	6-	8-	10-	12-	14-	16-	18-	20-	22-	24-	26-	28-	30-	32-		34-	36-	38-	40	UNDF
00-02	97	0	0	0	0	0	0	0	0	0	0	0	0	0	0	0	0	0	0	0	0	
02-04	17	118	9	2	1	1	1	3	0	0	1	2	3	2	2	2	1	1	0	1	12	0
04-06	19	4	278	35	8	5	4	2	4	3	4	5	2	3	2	2	2	2	2	2	101	0
06-08	17	2	9	416	58	25	9	8	4	4	2	2	6	5	5	3	2	2	2	1	169	0
08-10	15	3	6	5	612	115	37	19	17	8	7	6	10	4	5	4	3	5	4	3	231	0
10-12	12	3	3	2	9	749	144	63	36	25	20	14	13	8	5	5	4	4	4	0	306	0
12-14	11	0	2	2	2	6	714	177	79	43	34	21	28	18	16	6	10	7	5	2	323	0
14-16	4	1	1	2	1	2	4	636	174	75	47	33	17	17	16	13	11	6	4	6	334	0
16-18	1	0	0	2	1	0	2	1	515	156	71	41	32	22	15	11	12	9	8	11	267	0
18-20	0	0	0	0	0	0	1	2	0	323	111	55	29	20	14	16	9	5	8	6	197	0
20-22	0	0	0	0	0	0	0	0	0	0	174	69	34	22	14	9	3	8	4	4	122	0
22-24	0	0	0	0	0	0	0	0	0	0	0	89	29	17	13	12	5	5	3	4	89	0
24-26	0	0	0	0	0	0	0	0	0	0	0	0	32	14	8	2	2	5	1	2	43	0
26-28	0	0	0	0	0	0	0	0	0	0	0	0	0	14	3	4	4	1	0	1	23	0
28-30	0	0	0	0	0	0	0	0	0	0	0	0	0	0	5	1	1	0	0	0	13	0
30-32	0	0	0	0	0	0	0	0	0	0	0	0	0	0	0	2	0	1	0	0	7	0
32-34	0	0	0	0	0	0	0	0	0	0	0	0	0	0	0	0	0	0	0	0	5	0
34-36	0	0	0	0	0	0	0	0	0	0	0	0	0	0	0	0	0	0	0	0	0	0
36-38	0	0	0	0	0	0	0	0	0	0	0	0	0	0	0	0	0	0	0	0	0	0
38-40	0	0	0	0	0	0	0	0	0	0	0	0	0	0	0	0	0	0	0	0	0	0
>= 40	0	0	0	0	0	0	0	0	0	0	0	0	0	0	0	0	0	0	0	0	0	0
UNDF	0	0	0	0	0	0	0	0	0	0	0	0	0	0	0	0	0	0	0	0	0	0

# OBS : 23552( 23552) SCALED: 23552.01 RATIO : 1.000

Figure 5 Paulus duct height crossed with Jeske.

REVISION: 6.3

PAULUS DUCT HEIGHT VS  
JESKE DUCT HEIGHT

MAKINEN SQUARE: 1  
FOR: 7091-8412

DUCT HEIGHT (M)	2-	4-	6-	8-	10-	12-	14-	16-	18-	20-	22-	24-	26-	28-	30-	32-	34-	36-	38-	40>	40 UNDF	DUCT HEIGHT (M)
00-02	121	0	1	0	0	0	0	0	0	0	0	0	0	0	0	0	0	0	0	0	0	00-02
02-04	14	209	16	3	2	1	2	1	1	2	0	0	0	1	2	1	1	1	1	0	9	02-04
04-06	14	4	496	45	5	4	2	1	2	3	2	2	2	2	0	3	1	1	2	4	51	04-06
06-08	8	1	9	677	90	24	10	11	10	2	3	3	3	1	3	2	1	1	2	2	72	06-08
08-10	8	2	4	5	1012	138	45	23	21	5	6	6	9	3	4	3	2	2	3	2	112	08-10
10-12	3	2	1	6	3	1306	222	65	43	24	16	19	9	7	9	7	2	2	3	5	145	10-12
12-14	1	2	0	0	1	3	1125	243	78	52	27	15	26	16	9	5	7	2	3	3	103	12-14
14-16	0	0	0	0	0	2	1	889	199	72	40	30	13	7	4	7	4	7	4	5	76	14-16
16-18	0	0	0	0	0	0	1	2	479	122	53	22	23	8	6	5	2	5	1	2	48	16-18
18-20	0	0	0	0	0	0	0	0	0	262	60	25	16	7	6	4	6	2	3	3	29	18-20
20-22	0	0	0	0	0	0	0	0	0	1	122	29	19	4	0	2	1	2	2	3	19	20-22
22-24	0	0	0	0	0	0	0	0	0	0	0	55	14	3	2	1	1	0	0	1	6	22-24
24-26	0	0	0	0	0	0	0	0	0	0	0	0	13	9	2	1	0	0	0	2	2	24-26
26-28	0	0	0	0	0	0	0	0	0	0	0	0	0	7	0	0	0	0	0	0	3	26-28
28-30	0	0	0	0	0	0	0	0	0	0	0	0	0	0	1	0	0	0	0	1	1	28-30
30-32	0	0	0	0	0	0	0	0	0	0	0	0	0	0	0	2	0	0	0	0	0	30-32
32-34	0	0	0	0	0	0	0	0	0	0	0	0	0	0	0	0	0	0	0	0	0	32-34
34-36	0	0	0	0	0	0	0	0	0	0	0	0	0	0	0	0	0	0	0	0	0	34-36
36-38	0	0	0	0	0	0	0	0	0	0	0	0	0	0	0	0	0	0	0	0	0	36-38
38-40	0	0	0	0	0	0	0	0	0	0	0	0	0	0	0	0	0	0	0	0	0	38-40
>= 40	0	0	0	0	0	0	0	0	0	0	0	0	0	0	0	0	0	0	0	0	0	>= 40
UNDF	0	0	0	0	0	0	0	0	0	0	0	0	0	0	0	0	0	0	0	0	0	UNDF

# OBS : 17724( 17724)    SCALED: 17723.98    RATIO : 1.000

Figure 6. Paulus duct height crossed with Jeske.

MAKSDEN SQUARE: 1  
 FOR: 7001-8412

PAULUS DUCT HEIGHT VS  
 JESKE DUCT HEIGHT

REVISION: 6.3

DUCT HEIGHT (M) <	2-	4-	6-	8-	10-	12-	14-	16-	18-	20-	22-	24-	26-	28-	30-	32-	34-	36-	38-	40>	40 UNDF	DUCT HEIGHT (M)
	PROBABILITY*IEA: COMBINED																					
	JESKE DUCT HEIGHT										JESKE DUCT HEIGHT											
00-02	107	0	0	0	0	0	0	0	0	0	0	0	0	0	0	0	0	0	0	0	0	00-02
02-04	16	157	12	3	1	1	2	1	2	1	0	0	1	2	2	2	1	1	0	0	11	02-04
04-06	17	4	372	39	7	4	3	2	2	3	3	4	2	2	2	2	2	1	2	3	79	04-06
06-08	13	2	9	528	72	25	9	9	9	3	4	2	3	4	4	4	2	1	2	1	127	06-08
08-10	12	2	5	5	783	125	40	21	19	7	7	6	9	4	5	4	3	4	4	3	180	08-10
10-12	8	3	2	4	7	988	177	64	39	25	18	16	11	7	7	6	4	3	4	2	237	10-12
12-14	7	1	1	1	1	5	891	205	78	47	31	18	27	17	13	6	9	5	4	3	228	12-14
14-16	2	0	0	1	0	2	2	745	185	73	44	31	15	13	11	10	8	7	4	6	223	14-16
16-18	0	0	0	1	0	0	1	1	500	141	63	32	28	16	11	9	8	7	5	7	173	16-18
18-20	0	0	0	0	0	0	0	1	0	297	89	42	23	15	10	11	8	4	6	5	125	18-20
20-22	0	0	0	0	0	0	0	0	0	0	152	52	28	15	8	6	2	5	3	4	78	20-22
22-24	0	0	0	0	0	0	0	0	0	0	0	75	23	11	8	7	3	2	2	2	53	22-24
24-26	0	0	0	0	0	0	0	0	0	0	0	0	24	12	5	2	1	2	0	1	26	24-26
26-28	0	0	0	0	0	0	0	0	0	0	0	0	0	11	2	2	2	0	0	0	15	26-28
28-30	0	0	0	0	0	0	0	0	0	0	0	0	0	0	3	1	0	0	0	0	8	28-30
30-32	0	0	0	0	0	0	0	0	0	0	0	0	0	0	0	2	0	0	0	0	4	30-32
32-34	0	0	0	0	0	0	0	0	0	0	0	0	0	0	0	0	0	0	0	0	3	32-34
34-36	0	0	0	0	0	0	0	0	0	0	0	0	0	0	0	0	0	0	0	0	0	34-36
36-38	0	0	0	0	0	0	0	0	0	0	0	0	0	0	0	0	0	0	0	0	0	36-38
38-40	0	0	0	0	0	0	0	0	0	0	0	0	0	0	0	0	0	0	0	0	0	38-40
>= 40	0	0	0	0	0	0	0	0	0	0	0	0	0	0	0	0	0	0	0	0	0	>= 40
UNDF	0	0	0	0	0	0	0	0	0	0	0	0	0	0	0	0	0	0	0	0	0	UNDF

# OBS : 41276( 41276) SCALED: 41275.98 RATIO : 1.000

Figure 7. Paulus duct height crossed with Jeske.

MAXIMUM SQUARE: 1  
FOR: 7001-8412

WIND SPEED (M/SEC)

REVISION: 6.3

WIND SPEED (M/S)	JANUARY		FEBRUARY		MARCH		APRIL		WIND SPEED (M/S)
	DAY %	NIGHT %	DAY %	NIGHT %	DAY %	NIGHT %	DAY %	NIGHT %	
WIND < 0	.0	.0	.0	.0	.0	.0	.0	.0	WIND < 0
0< WIND < 1	7.4	7.6	6.5	7.9	5.7	6.9	7.2	7.8	0< WIND < 1
1< WIND < 2	12.3	11.6	14.0	12.1	13.3	12.3	11.4	11.8	1< WIND < 2
2< WIND < 3	21.1	22.1	18.2	17.9	21.7	24.0	23.9	23.5	2< WIND < 3
3< WIND < 4	12.6	12.5	12.2	14.3	15.8	13.8	12.2	14.1	3< WIND < 4
4< WIND < 5	18.3	17.9	18.7	18.7	19.9	21.7	18.7	20.5	4< WIND < 5
5< WIND < 6	13.3	13.8	12.2	13.7	10.6	10.5	10.5	9.4	5< WIND < 6
6< WIND < 7	8.5	8.6	10.2	8.8	6.4	5.5	8.4	6.6	6< WIND < 7
7< WIND < 8	3.2	3.0	4.8	4.1	3.4	3.3	3.9	3.3	7< WIND < 8
8< WIND < 9	1.9	1.8	2.4	1.4	1.8	.9	2.0	2.0	8< WIND < 9
9< WIND < 10	.7	.4	.5	.5	.6	.7	.9	.4	9< WIND < 10
10< WIND < 11	.5	.3	.1	.3	.5	.3	.4	.2	10< WIND < 11
11< WIND < 12	.2	.0	.1	.0	.0	.1	.0	.0	11< WIND < 12
12< WIND < 13	.1	.1	.1	.1	.1	.0	.3	.1	12< WIND < 13
13< WIND < 14	.1	.1	.1	.0	.1	.0	.0	.1	13< WIND < 14
14< WIND < 15	.0	.0	.0	.0	.1	.0	.0	.0	14< WIND < 15
15< WIND < 16	.0	.0	.1	.2	.0	.0	.0	.2	15< WIND < 16
16< WIND < 17	.0	.0	.0	.0	.1	.0	.0	.0	16< WIND < 17
17< WIND < 18	.0	.0	.0	.0	.0	.0	.0	.0	17< WIND < 18
18< WIND < 19	.0	.0	.0	.0	.0	.0	.0	.0	18< WIND < 19
19< WIND < 20	.0	.0	.0	.0	.0	.0	.0	.0	19< WIND < 20
20< WIND	.0	.1	.0	.0	.0	.0	.0	.0	20< WIND
MEAN:	3.7	3.7	3.8	3.7	3.6	3.5	3.7	3.6	MEAN
VALID OBS:	1672	1739	1497	1617	1712	1443	2229	1055	VALID OBS

Figure 8. Wind speed.

MARSDEN SQUARE: 1  
FOR: 7001-84 L2

WIND SPEED (M/SEC)

REVISION: 6.3

WIND SPEED (M/S)	MAY		JUNE		JULY		AUGUST		WIND SPEED (M/S)
	DAY %	NIGHT %	DAY %	NIGHT %	DAY %	NIGHT %	DAY %	NIGHT %	
WIND < 0	.0	.0	.0	.0	.0	.0	.0	.0	WIND < 0
0< WIND < 1	3.5	3.3	1.1	.7	1.7	2.3	1.7	1.8	0< WIND < 1
1< WIND < 2	7.9	6.2	3.3	2.4	5.0	5.3	5.4	3.7	1< WIND < 2
2< WIND < 3	15.3	16.0	9.7	8.4	10.1	10.1	11.6	12.5	2< WIND < 3
3< WIND < 4	12.1	10.1	6.9	7.5	8.8	8.8	10.2	9.6	3< WIND < 4
4< WIND < 5	19.3	21.4	19.5	20.5	18.4	24.8	21.1	24.4	4< WIND < 5
5< WIND < 6	13.0	14.4	15.4	18.0	17.0	16.4	14.3	15.9	5< WIND < 6
6< WIND < 7	13.1	13.4	19.0	19.3	16.9	13.3	15.4	13.2	6< WIND < 7
7< WIND < 8	6.6	8.0	10.5	9.6	9.0	8.9	9.3	9.2	7< WIND < 8
8< WIND < 9	5.1	4.6	7.2	6.3	5.9	3.6	4.5	4.4	8< WIND < 9
9< WIND < 10	2.6	2.0	4.7	3.7	3.4	3.8	3.8	3.0	9< WIND < 10
10< WIND < 11	.7	.4	1.6	2.2	2.3	1.7	1.6	1.2	10< WIND < 11
11< WIND < 12	.5	.1	.6	.4	.7	.5	.3	.2	11< WIND < 12
12< WIND < 13	.1	.1	.4	.5	.4	.2	.6	.9	12< WIND < 13
13< WIND < 14	.1	.1	.0	.2	.3	.0	.1	.1	13< WIND < 14
14< WIND < 15	.0	.0	.1	.0	.0	.0	.0	.0	14< WIND < 15
15< WIND < 16	.1	.1	.1	.1	.0	.0	.1	.0	15< WIND < 16
16< WIND < 17	.0	.0	.0	.0	.0	.0	.0	.0	16< WIND < 17
17< WIND < 18	.0	.0	.0	.0	.0	.0	.0	.0	17< WIND < 18
18< WIND < 19	.0	.0	.0	.0	.0	.1	.0	.0	18< WIND < 19
19< WIND < 20	.0	.0	.0	.0	.0	.0	.0	.0	19< WIND < 20
20< WIND	.0	.0	.0	.2	.0	.1	.0	.0	20< WIND
MEAN:	4.6	4.6	5.6	5.6	5.3	5.1	5.1	5.1	MEAN
VALID OBS:	2671	1392	2456	1246	2302	1126	2542	1275	VALID OBS

Figure 9. Wind speed.

MASSIER SQUARE: 1  
 10R-01-5412

WIND SPEED (M/SBC)

REVISION: 6.3

WIND SPEED (M/S)	SEPTEMBER		OCTOBER		NOVEMBER		DECEMBER		WIND SPEED (M/S)
	DAY %	NIGHT %	DAY %	NIGHT %	DAY %	NIGHT %	DAY %	NIGHT %	
WIND < 0	.0	.0	.0	.0	.0	.0	.0	.0	WIND < 0
0< WIND < 1	3.3	1.6	2.3	1.5	4.1	2.8	8.7	5.9	0< WIND < 1
1< WIND < 2	6.6	5.5	3.9	3.8	9.5	7.9	15.0	10.8	1< WIND < 2
2< WIND < 3	13.0	14.2	13.8	12.5	21.3	19.3	21.1	24.1	2< WIND < 3
3< WIND < 4	11.5	10.3	9.5	10.0	12.8	14.6	12.6	13.6	3< WIND < 4
4< WIND < 5	20.3	21.7	22.9	26.4	20.5	24.2	17.9	19.9	4< WIND < 5
5< WIND < 6	19.1	14.8	14.1	16.9	13.6	14.6	11.4	11.2	5< WIND < 6
6< WIND < 7	13.5	15.0	17.8	14.9	9.3	9.8	7.6	8.2	6< WIND < 7
7< WIND < 8	7.1	8.6	8.0	7.7	5.7	3.9	2.9	3.2	7< WIND < 8
8< WIND < 9	4.5	3.8	2.8	3.0	1.5	1.4	1.7	1.6	8< WIND < 9
9< WIND < 10	3.2	2.2	3.2	2.2	1.1	.7	.6	.9	9< WIND < 10
10< WIND < 11	.7	1.3	1.1	.8	.3	.3	.4	.2	10< WIND < 11
11< WIND < 12	.3	.1	.1	.1	.1	.2	.0	.2	11< WIND < 12
12< WIND < 13	.6	.6	.1	.0	.0	.0	.0	.0	12< WIND < 13
13< WIND < 14	.0	.1	.0	.1	.0	.1	.1	.0	13< WIND < 14
14< WIND < 15	.0	.0	.1	.1	.0	.1	.0	.1	14< WIND < 15
15< WIND < 16	.1	.1	.1	.1	.0	.0	.0	.0	15< WIND < 16
16< WIND < 17	.0	.0	.0	.0	.0	.0	.0	.0	16< WIND < 17
17< WIND < 18	.0	.0	.0	.0	.0	.0	.0	.0	17< WIND < 18
18< WIND < 19	.0	.0	.0	.0	.0	.0	.0	.0	18< WIND < 19
19< WIND < 20	.0	.0	.1	.0	.0	.0	.0	.0	19< WIND < 20
20< WIND	.0	.0	.0	.0	.1	.1	.0	.0	20< WIND
MEAN:	4.8	4.9	5.0	4.9	4.0	4.1	3.5	3.7	MEAN
VALID OBS:	2090	1412	1556	1942	1496	1871	1329	1606	VALID OBS

Figure 10. Wind speed.

MARKSDEM SQUARE: 1  
 FOR: 7001-8412

ABSOLUTE HUMIDITY (G/M\*\*3)

REVISION: 6.3

ABSOLUTE HUMIDITY G/M**3	JANUARY		FEBRUARY		MARCH		APRIL		ABSOLUTE HUMIDITY G/M**3
	DAY %	NIGHT %	DAY %	NIGHT %	DAY %	NIGHT %	DAY %	NIGHT %	
ABSH < 1	.0	.0	.0	.0	.0	.0	.0	.0	ABSH < 1
1< ABSH < 3	.0	.0	.0	.0	.0	.0	.0	.0	1< ABSH < 3
3< ABSH < 5	.0	.0	.0	.0	.0	.0	.0	.0	3< ABSH < 5
5< ABSH < 7	.0	.0	.0	.0	.0	.0	.0	.0	5< ABSH < 7
7< ABSH < 9	.0	.0	.0	.0	.0	.0	.0	.0	7< ABSH < 9
9< ABSH < 11	.1	.0	.0	.0	.0	.0	.0	.0	9< ABSH < 11
11< ABSH < 13	.2	.0	.0	.0	.0	.0	.0	.0	11< ABSH < 13
13< ABSH < 15	.4	.3	.1	.0	.1	.0	.0	.0	13< ABSH < 15
15< ABSH < 17	.8	.9	.2	.4	.3	.3	.3	.2	15< ABSH < 17
17< ABSH < 19	3.2	2.6	1.5	2.7	1.5	1.5	1.7	1.5	17< ABSH < 19
19< ABSH < 21	20.5	24.1	13.8	16.3	13.4	15.8	14.8	15.2	19< ABSH < 21
21< ABSH < 23	47.7	47.7	52.6	56.0	48.6	48.1	49.0	49.6	21< ABSH < 23
23< ABSH < 25	22.1	20.9	24.1	21.2	26.6	27.2	24.3	26.0	23< ABSH < 25
25< ABSH < 27	4.4	3.3	6.5	3.0	7.2	6.2	7.3	6.8	25< ABSH < 27
27< ABSH < 29	.5	.2	.9	.5	2.0	.8	2.0	.8	27< ABSH < 29
29< ABSH < 31	.1	.0	.3	.0	.3	.0	.4	.0	29< ABSH < 31
31< ABSH < 33	.0	.0	.0	.0	.0	.0	.0	.0	31< ABSH < 33
33< ABSH < 35	.0	.0	.0	.0	.0	.0	.0	.0	33< ABSH < 35
35< ABSH < 37	.0	.0	.0	.0	.0	.0	.0	.0	35< ABSH < 37
37< ABSH < 39	.0	.0	.0	.0	.0	.0	.0	.0	37< ABSH < 39
39< ABSH < 41	.0	.0	.0	.0	.0	.0	.0	.0	39< ABSH < 41
41< ABSH	.0	.0	.0	.0	.0	.0	.0	.0	41< ABSH
MEAN:	22.0	21.9	22.5	22.2	22.6	22.4	22.5	22.5	MEAN
VALID OBS:	1672	1739	1497	1617	1712	1443	2229	1055	VALID OBS

Figure 11. Absolute humidity.

MANHATTEN SQUARE:  
FOG 7001-3412

1

ABSOLUTE HUMIDITY (G/M\*\*3)

REVISION: 6.3

ABSOLUTE HUMIDITY G/M**3	MAY		JUNE		JULY		AUGUST		ABSOLUTE HUMIDITY G/M**3
	DAY %	NIGHT %	DAY %	NIGHT %	DAY %	NIGHT %	DAY %	NIGHT %	
ABSH < 1	.0	.0	.0	.0	.0	.0	.0	.0	ABSH < 1
1< ABSH < 3	.0	.0	.0	.0	.0	.0	.0	.0	1< ABSH < 3
3< ABSH < 5	.0	.0	.0	.0	.0	.0	.0	.0	3< ABSH < 5
5< ABSH < 7	.0	.0	.0	.0	.0	.0	.0	.0	5< ABSH < 7
7< ABSH < 9	.0	.0	.0	.0	.0	.0	.0	.0	7< ABSH < 9
9< ABSH < 11	.0	.0	.0	.0	.0	.0	.0	.0	9< ABSH < 11
11< ABSH < 13	1	.0	.0	.0	.1	.1	.0	.0	11< ABSH < 13
13< ABSH < 15	.0	.0	.2	.0	.4	.3	.6	.4	13< ABSH < 15
15< ABSH < 17	.3	.4	2.3	2.6	10.9	11.5	11.3	12.3	15< ABSH < 17
17< ABSH < 19	3.6	3.2	17.7	18.7	44.1	44.8	38.2	42.3	17< ABSH < 19
19< ABSH < 21	24.9	25.0	49.7	50.5	36.4	35.8	41.3	38.0	19< ABSH < 21
21< ABSH < 23	52.9	56.0	25.5	25.1	6.6	6.7	7.7	6.7	21< ABSH < 23
23< ABSH < 25	15.2	13.2	3.8	2.4	1.2	.8	.8	.3	23< ABSH < 25
25< ABSH < 27	2.3	1.9	.7	.7	.2	.0	.0	.0	25< ABSH < 27
27< ABSH < 29	.7	.1	.2	.0	.1	.1	.0	.0	27< ABSH < 29
29< ABSH < 31	.1	.0	.0	.0	.0	.0	.0	.0	29< ABSH < 31
31< ABSH < 33	.0	.0	.0	.0	.0	.0	.0	.0	31< ABSH < 33
33< ABSH < 35	.0	.0	.0	.0	.0	.0	.0	.0	33< ABSH < 35
35< ABSH < 37	.0	.0	.0	.0	.0	.0	.0	.0	35< ABSH < 37
37< ABSH < 39	.0	.0	.0	.0	.0	.0	.0	.0	37< ABSH < 39
39< ABSH < 41	.0	.0	.0	.0	.0	.0	.0	.0	39< ABSH < 41
41< ABSH	.0	.0	.0	.0	.0	.0	.0	.0	41< ABSH
MEAN:	21.8	21.7	20.3	20.2	18.9	18.8	18.9	18.8	MEAN
VALID OBS:	2671	1392	2456	1246	2302	1126	2542	1275	VALID OBS

Figure 12. Absolute humidity

MARSDEN SQUARE: 1  
 FOR: 7001-8412

ABSOLUTE HUMIDITY (G/M\*\*3)

REVISION: 6.3

ABSOLUTE HUMIDITY G/M**3	SEPTEMBER		OCTOBER		NOVEMBER		DECEMBER		ABSOLUTE HUMIDITY G/M**3
	DAY %	NIGHT %	DAY %	NIGHT %	DAY %	NIGHT %	DAY %	NIGHT %	
ABSH < 1	.0	.0	.0	.0	.0	.0	.0	.0	ABSH < 1
1< ABSH < 3	.0	.0	.0	.0	.0	.0	.0	.0	1< ABSH < 3
3< ABSH < 5	.0	.0	.0	.0	.0	.0	.0	.0	3< ABSH < 5
5< ABSH < 7	.0	.0	.0	.0	.0	.0	.0	.0	5< ABSH < 7
7< ABSH < 9	.0	.0	.0	.0	.0	.0	.0	.0	7< ABSH < 9
9< ABSH < 11	.0	.0	.0	.0	.0	.0	.0	.0	9< ABSH < 11
11< ABSH < 13	.0	.0	.0	.0	.0	.0	.2	.0	11< ABSH < 13
13< ABSH < 15	.1	.2	.1	.3	.0	.0	.3	.4	13< ABSH < 15
15< ABSH < 17	4.6	4.0	1.5	1.8	.5	.1	.7	1.2	15< ABSH < 17
17< ABSH < 19	26.3	27.0	14.1	14.6	3.9	4.7	5.3	3.6	17< ABSH < 19
19< ABSH < 21	52.9	53.3	48.8	52.7	36.7	36.7	32.1	29.8	19< ABSH < 21
21< ABSH < 23	15.1	14.6	29.6	27.7	44.7	47.2	45.8	52.2	21< ABSH < 23
23< ABSH < 25	.8	.8	4.5	2.8	12.2	9.7	11.5	10.2	23< ABSH < 25
25< ABSH < 27	.1	.2	1.2	.2	1.6	1.7	3.0	2.3	25< ABSH < 27
27< ABSH < 29	.0	.0	.1	.0	.4	.0	1.2	.1	27< ABSH < 29
29< ABSH < 31	.0	.0	.0	.0	.0	.0	.0	.0	29< ABSH < 31
31< ABSH < 33	.0	.0	.0	.0	.0	.0	.0	.0	31< ABSH < 33
33< ABSH < 35	.0	.0	.0	.0	.0	.0	.0	.0	33< ABSH < 35
35< ABSH < 37	.0	.0	.0	.0	.0	.0	.0	.0	35< ABSH < 37
37< ABSH < 39	.0	.0	.0	.0	.0	.0	.0	.0	37< ABSH < 39
39< ABSH < 41	.0	.0	.0	.0	.0	.0	.0	.0	39< ABSH < 41
41< ABSH	.0	.0	.0	.0	.0	.0	.0	.0	41< ABSH
MEAN:	19.6	19.6	20.5	20.3	21.4	21.3	21.5	21.5	MEAN
VALID OBS:	2090	1412	1556	1942	1496	1871	1329	1606	VALID OBS

Figure 13. Absolute humidity.

MANHATTAN SQUARE:  
 PAR:7001-8412

MODIFIED AIR-SEA TEMPERATURE (C)

REVISION: 6.3

MAIR-SEA TEMP DEG C	JANUARY		FEBRUARY		MARCH		APRIL		MAIR-SEA TEMP DEG C
	DAY %	NIGHT %	DAY %	NIGHT %	DAY %	NIGHT %	DAY %	NIGHT %	
MA-S <-10	.0	.0	.0	.0	.0	.0	.0	.0	MA-S <-10
-10< MA-S <-9	.0	.0	.0	.0	.0	.0	.0	.0	-10< MA-S <-9
-9< MA-S <-8	.0	.0	.0	.0	.0	.0	.0	.0	-9< MA-S <-8
-8< MA-S <-7	.0	.0	.0	.0	.1	.0	.0	.0	-8< MA-S <-7
-7< MA-S <-6	.0	.1	.0	.0	.0	.1	.2	.2	-7< MA-S <-6
-6< MA-S <-5	.0	.4	.0	.2	.2	.3	.4	.4	-6< MA-S <-5
-5< MA-S <-4	.5	.6	.4	.9	.6	1.0	1.1	.9	-5< MA-S <-4
-4< MA-S <-3	2.2	2.8	.7	2.0	1.9	3.0	4.4	4.0	-4< MA-S <-3
-3< MA-S <-2	3.5	7.2	3.1	6.3	4.1	7.7	8.8	10.9	-3< MA-S <-2
-2< MA-S <-1	13.3	23.7	7.4	16.8	11.3	19.9	19.2	25.8	-2< MA-S <-1
-1< MA-S < 0	79.2	63.8	86.4	70.7	80.2	65.6	64.6	56.1	-1< MA-S < 0
0< MA-S < 1	1.0	1.1	1.3	1.8	.9	2.0	.9	1.4	0< MA-S < 1
1< MA-S < 2	.2	.2	.5	.5	.3	.3	.1	.1	1< MA-S < 2
2< MA-S < 3	.1	.1	.0	.4	.1	.1	.1	.1	2< MA-S < 3
3< MA-S < 4	.1	.0	.1	.2	.2	.0	.1	.1	3< MA-S < 4
4< MA-S < 5	.0	.1	.1	.0	.0	.0	.0	.0	4< MA-S < 5
5< MA-S < 6	.0	.1	.1	.0	.0	.0	.0	.0	5< MA-S < 6
6< MA-S < 7	.0	.0	.0	.0	.0	.0	.0	.0	6< MA-S < 7
7< MA-S < 8	.0	.0	.0	.0	.0	.0	.0	.0	7< MA-S < 8
8< MA-S < 9	.0	.0	.0	.0	.0	.0	.0	.0	8< MA-S < 9
9< MA-S < 10	.0	.0	.0	.0	.0	.0	.0	.0	9< MA-S < 10
10< MA-S	.0	.0	.0	.0	.0	.0	.0	.0	10< MA-S

MEAN:

MEAN

VALID OBS: 1072

VALID OBS 1055

Figure 14. Monthly air-sea temperature difference

MARSDEN SQUARE:  
FOR: 7001-8412

MODIFIED AIR-SEA TEMPERATURE (C)

REVISION: 6.3

MAIR-SEA TEMP DEG C	MAY		JUNE		JULY		AUGUST		MAIR-SEA TEMP DEG C
	DAY %	NIGHT %	DAY %	NIGHT %	DAY %	NIGHT %	DAY %	NIGHT %	
MA-S < -10	.0	.0	.0	.0	.0	.0	.0	.0	MA-S < -10
-10< MA-S < -9	.0	.0	.0	.0	.0	.0	.0	.0	-10< MA-S < -9
-9< MA-S < -8	.0	.0	.0	.0	.0	.0	.0	.0	-9< MA-S < -8
-8< MA-S < -7	.0	.1	.0	.0	.0	.1	.0	.2	-8< MA-S < -7
-7< MA-S < -6	.5	.0	.0	.0	.0	.1	.0	.1	-7< MA-S < -6
-6< MA-S < -5	.4	.6	.2	.2	.1	.4	.2	.3	-6< MA-S < -5
-5< MA-S < -4	1.4	.7	.8	1.2	.9	1.0	.4	.8	-5< MA-S < -4
-4< MA-S < -3	4.4	4.7	3.8	3.9	2.6	3.1	1.4	2.0	-4< MA-S < -3
-3< MA-S < -2	10.5	13.7	8.1	10.5	7.6	10.5	4.7	7.1	-3< MA-S < -2
-2< MA-S < -1	23.7	29.8	22.6	28.0	20.7	27.1	15.5	23.5	-2< MA-S < -1
-1< MA-S < 0	57.7	49.4	59.7	50.7	64.4	52.6	72.1	57.1	-1< MA-S < 0
0< MA-S < 1	.9	.7	4.3	5.3	2.5	3.2	4.1	6.9	0< MA-S < 1
1< MA-S < 2	.4	.1	.4	.2	.7	1.3	1.0	1.5	1< MA-S < 2
2< MA-S < 3	.2	.1	.1	.0	.1	.6	.4	.3	2< MA-S < 3
3< MA-S < 4	.0	.0	.0	.0	.3	.0	.2	.2	3< MA-S < 4
4< MA-S < 5	.0	.0	.0	.0	.0	.1	.0	.0	4< MA-S < 5
5< MA-S < 6	.0	.0	.0	.0	.0	.0	.0	.0	5< MA-S < 6
6< MA-S < 7	.0	.0	.0	.0	.0	.0	.0	.0	6< MA-S < 7
7< MA-S < 8	.0	.0	.0	.0	.0	.0	.0	.0	7< MA-S < 8
8< MA-S < 9	.0	.0	.0	.0	.0	.0	.0	.0	8< MA-S < 9
9< MA-S < 10	.0	.0	.0	.0	.0	.0	.0	.0	9< MA-S < 10
10< MA-S	.0	.0	.0	.0	.0	.0	.0	.0	10< MA-S
MEAN:	-1.5	-1.5	-1.3	-1.3	-1.2	-1.3	-1.1	-1.2	MEAN
VALID OBS:	2671	1392	2456	1246	2302	1126	2542	1275	VALID OBS

Figure 15 Modified air-sea temperature difference.

WORLDWIDE CLIMATE  
1941-1942

MODIFIED AIR-SEA TEMPERATURE (C)

REVISION: 6.3

AIR-SEA TEMP DEG C	SEPTEMBER		OCTOBER		NOVEMBER		DECEMBER		AIR-SEA TEMP DEG C
	DAY %	NIGHT %	DAY %	NIGHT %	DAY %	NIGHT %	DAY %	NIGHT %	
MA-S < -10	.0	.0	.0	.0	.0	.0	.0	.0	MA-S < -10
-10< MA-S < -9	.0	.0	.0	.0	.0	.0	.0	.0	-10< MA-S < -9
-9< MA-S < -8	.0	.0	.0	.0	.0	.0	.0	.0	-9< MA-S < -8
-8< MA-S < -7	.0	.0	.0	.0	.0	.0	.0	.0	-8< MA-S < -7
-7< MA-S < -6	.0	.0	.1	.0	.0	.1	.0	.1	-7< MA-S < -6
-6< MA-S < -5	.2	.4	.1	.2	.1	.1	.0	.2	-6< MA-S < -5
-5< MA-S < -4	.1	.0	.3	.4	.3	.4	.4	.6	-5< MA-S < -4
-4< MA-S < -3	1.9	2.5	1.3	2.2	1.3	2.2	1.2	2.4	-4< MA-S < -3
-3< MA-S < -2	3.8	5.7	4.0	6.6	4.5	7.7	4.7	8.8	-3< MA-S < -2
-2< MA-S < -1	13.5	18.8	12.6	25.0	14.5	28.1	15.0	26.2	-2< MA-S < -1
-1< MA-S < 0	75.0	64.7	79.4	62.3	78.4	60.1	77.7	61.2	-1< MA-S < 0
0< MA-S < 1	3.8	5.4	1.3	2.5	.7	1.3	.7	.4	0< MA-S < 1
1< MA-S < 2	.9	1.6	.5	.6	.1	.1	.2	.0	1< MA-S < 2
2< MA-S < 3	.6	.2	.3	.1	.1	.1	.2	.1	2< MA-S < 3
3< MA-S < 4	.1	.1	.1	.1	.0	.0	.1	.1	3< MA-S < 4
4< MA-S < 5	.0	.1	.1	.1	.0	.0	.0	.0	4< MA-S < 5
5< MA-S < 6	.0	.0	.0	.0	.0	.0	.0	.0	5< MA-S < 6
6< MA-S < 7	.0	.0	.0	.0	.0	.0	.0	.0	6< MA-S < 7
7< MA-S < 8	.0	.0	.0	.1	.0	.0	.0	.0	7< MA-S < 8
8< MA-S < 9	.0	.0	.0	.0	.0	.0	.0	.0	8< MA-S < 9
9< MA-S < 10	.0	.0	.0	.0	.0	.0	.0	.0	9< MA-S < 10
10< MA-S	.0	.0	.0	.0	.0	.0	.0	.0	10< MA-S

MEAN:  
VALID OBS:

MEAN  
VALID OBS

-1.1	-1.1	-1.2	-1.3	-1.3	-1.3	-1.2	-1.3	-1.2	-1.3	MEAN
2090	1412	1556	1942	1496	1871	1329	1606	1329	1606	VALID OBS

Figure 16 Modified air-sea temperature difference

MANHATTAN SQUARE:  
 LOC: 7001-8412

1

RAIN RATE (MM/HR\*100)

REVISION: 6.3

RAIN RATE	JANUARY DAY %	JANUARY NIGHT %	FEBRUARY DAY %	FEBRUARY NIGHT %	MARCH DAY %	MARCH NIGHT %	APRIL DAY %	APRIL NIGHT %	RAIN RATE
RAIN < 1	96.4	96.0	96.8	96.3	96.4	95.8	93.5	95.8	RAIN < 1
1< RAIN < 26	.0	.0	.0	.0	.0	.0	.0	.0	1< RAIN < 26
26< RAIN < 51	.0	.0	.0	.0	.0	.0	.0	.0	26< RAIN < 51
51< RAIN < 76	.0	.0	.0	.0	1.5	1.2	1.7	1.2	51< RAIN < 76
76< RAIN <101	.0	.0	.0	.1	.0	.0	.6	.0	76< RAIN <101
101< RAIN <126	.0	.0	1.2	1.7	.4	.5	.0	.0	101< RAIN <126
126< RAIN <151	.4	.7	.0	.0	.0	.1	.9	.2	126< RAIN <151
151< RAIN <176	.6	1.2	.0	.0	.1	.0	.2	.0	151< RAIN <176
176< RAIN <201	.1	.0	.0	.1	.6	.8	.0	.0	176< RAIN <201
201< RAIN <226	.0	.0	.4	.2	.1	.0	.6	.6	201< RAIN <226
226< RAIN <251	.0	.0	.0	.0	.2	.7	.3	.5	226< RAIN <251
251< RAIN <276	.2	.3	.0	.0	.3	.2	.1	.0	251< RAIN <276
276< RAIN <301	.7	.6	.2	.1	.0	.0	.6	.3	276< RAIN <301
301< RAIN <326	.2	.1	.5	.2	.0	.0	.4	.4	301< RAIN <326
326< RAIN <351	.0	.0	.2	.5	.1	.1	.1	.0	326< RAIN <351
351< RAIN <376	.0	.0	.1	.0	.0	.1	.0	.0	351< RAIN <376
376< RAIN <401	.1	.0	.1	.1	.0	.0	.0	.0	376< RAIN <401
401< RAIN <426	.2	.0	.1	.1	.0	.0	.2	.0	401< RAIN <426
426< RAIN <451	.2	.1	.1	.2	.2	.1	.2	.0	426< RAIN <451
451< RAIN <476	.1	.1	.1	.2	.1	.1	.0	.2	451< RAIN <476
476< RAIN <501	.1	.1	.0	.0	.0	.0	.0	.0	476< RAIN <501
501< RAIN	.8	.7	.2	.3	.3	.3	.5	.9	501< RAIN
MEAN:	14.2	13.0	8.7	10.2	6.7	8.2	14.2	11.5	MEAN
VALID OBS:	1672	1739	1497	1617	1712	1443	2229	1055	VALID OBS

Figure 17. Rain rate.

MARSDEN SQUARE:  
 FOR: 7001-8412

RAIN RATE (MM/HR\*100)

REVISION: 6.3

RAIN RATE	MAY		JUNE		JULY		AUGUST		RAIN RATE
	DAY %	NIGHT %	DAY %	NIGHT %	DAY %	NIGHT %	DAY %	NIGHT %	
RAIN < 1	89.2	92.1	92.8	93.6	96.3	97.2	95.8	96.6	RAIN < 1
1< RAIN < 26	.0	.0	.0	.0	.0	.0	.0	.0	1< RAIN < 26
26< RAIN < 51	.0	.0	.0	.0	.0	.0	.0	.0	26< RAIN < 51
51< RAIN < 76	3.4	3.3	.0	.0	.1	.2	.1	.0	51< RAIN < 76
76< RAIN < 101	.3	.0	.0	.1	1.2	.4	1.5	1.7	76< RAIN < 101
101< RAIN < 126	.0	.0	1.8	1.7	.8	.4	.4	.8	101< RAIN < 126
126< RAIN < 151	1.6	.9	1.1	1.4	.1	.0	.0	.0	126< RAIN < 151
151< RAIN < 176	.0	.0	.0	.0	.0	.0	.3	.2	151< RAIN < 176
176< RAIN < 201	.2	.1	.0	.1	.1	.1	.1	.1	176< RAIN < 201
201< RAIN < 226	2.5	1.7	.3	.1	.0	.1	.0	.0	201< RAIN < 226
226< RAIN < 251	.1	.1	.3	.3	.0	.1	.2	.0	226< RAIN < 251
251< RAIN < 276	.1	.1	.4	.1	.2	.3	.7	.2	251< RAIN < 276
276< RAIN < 301	.3	.4	.2	.0	.1	.1	.4	.3	276< RAIN < 301
301< RAIN < 326	.5	.3	.3	.1	.3	.2	.2	.1	301< RAIN < 326
326< RAIN < 351	.0	.0	.4	.4	.1	.2	.0	.0	326< RAIN < 351
351< RAIN < 376	.0	.0	.3	.4	.0	.0	.1	.0	351< RAIN < 376
376< RAIN < 401	.1	.0	.5	.3	.1	.2	.0	.0	376< RAIN < 401
401< RAIN < 426	.4	.2	.2	.2	.1	.0	.1	.0	401< RAIN < 426
426< RAIN < 451	.2	.1	.1	.2	.0	.0	.0	.0	426< RAIN < 451
451< RAIN < 476	.0	.0	.2	.0	.0	.1	.0	.0	451< RAIN < 476
476< RAIN < 501	.1	.0	.1	.3	.0	.0	.0	.0	476< RAIN < 501
501< RAIN	.8	.6	1.0	.8	.4	.5	.1	.0	501< RAIN
MEAN:	22.0	15.2	21.4	18.2	8.5	7.9	8.5	4.5	MEAN
VALID OBS:	2671	1392	2456	1246	2302	1126	2542	1275	VALID OBS

Figure 18. Rain rate.

MARSDEN SQUARE:  
FOR: 7001-8412

1

RAIN RATE (MM/HR\*100)

REVISION: 6.3

RAIN RATE	SEPTEMBER DAY %	SEPTEMBER NIGHT %	OCTOBER DAY %	OCTOBER NIGHT %	NOVEMBER DAY %	NOVEMBER NIGHT %	DECEMBER DAY %	DECEMBER NIGHT %	RAIN RATE
RAIN < 1	94.8	96.2	94.9	95.2	95.6	96.3	96.5	96.8	RAIN < 1
1< RAIN < 26	.0	.0	.0	.0	.0	.0	.0	.0	1< RAIN < 26
26< RAIN < 51	.0	.0	.0	.0	.0	.0	.0	.0	26< RAIN < 51
51< RAIN < 76	.0	.0	.0	.0	.0	.0	.0	.0	51< RAIN < 76
76< RAIN <101	.0	.0	.0	.0	.0	.0	.1	.1	76< RAIN <101
101< RAIN <126	1.8	1.6	2.0	2.8	2.2	1.4	1.2	1.4	101< RAIN <126
126< RAIN <151	.7	.4	.1	.0	.0	.0	.0	.0	126< RAIN <151
151< RAIN <176	.0	.0	.0	.0	.0	.0	.0	.0	151< RAIN <176
176< RAIN <201	.0	.0	.1	.0	.1	.0	.1	.0	176< RAIN <201
201< RAIN <226	.2	.2	.1	.2	.6	.3	.5	.2	201< RAIN <226
226< RAIN <251	.3	.1	.1	.0	.1	.1	.1	.0	226< RAIN <251
251< RAIN <276	.0	.0	.0	.0	.0	.0	.0	.0	251< RAIN <276
276< RAIN <301	.0	.0	.0	.1	.0	.0	.1	.0	276< RAIN <301
301< RAIN <326	.1	.0	.2	.3	.1	.1	.4	.1	301< RAIN <326
326< RAIN <351	.6	.4	1.2	.4	.7	.6	.5	.5	326< RAIN <351
351< RAIN <376	.5	.5	.4	.4	.2	.3	.0	.0	351< RAIN <376
376< RAIN <401	.2	.1	.1	.1	.0	.0	.0	.1	376< RAIN <401
401< RAIN <426	.0	.0	.1	.0	.0	.0	.0	.1	401< RAIN <426
426< RAIN <451	.1	.0	.2	.0	.1	.3	.0	.2	426< RAIN <451
451< RAIN <476	.0	.0	.0	.1	.0	.1	.0	.1	451< RAIN <476
476< RAIN <501	.2	.0	.0	.1	.0	.2	.3	.1	476< RAIN <501
501< RAIN	.5	.4	.6	.5	.3	.4	.4	.5	501< RAIN
MEAN:	14.0	10.5	14.5	11.4	10.3	11.2	9.9	10.1	MEAN
VALID OBS:	2090	1412	1556	1942	1496	1871	1329	1606	VALID OBS

Figure 19 Rain rate.

NORSELEN SQUARE:  
 FOR: 7001-8412

1

GAS ATTEN: 35 GHZ (DB/KM\*1000)

REVISION: 6.3

GAS ATTEN 35 GHZ	JANUARY DAY %	JANUARY NIGHT %	FEBRUARY DAY %	FEBRUARY NIGHT %	MARCH DAY %	MARCH NIGHT %	APRIL DAY %	APRIL NIGHT %	GAS ATTEN 35 GHZ
G 35 < 1	.0	.0	.0	.0	.0	.0	.0	.0	G 35 < 1
1 < G 35 < 26	.0	.0	.0	.0	.0	.0	.0	.0	1 < G 35 < 26
26 < G 35 < 51	.0	.0	.0	.0	.0	.0	.0	.0	26 < G 35 < 51
51 < G 35 < 76	.0	.0	.0	.0	.0	.0	.0	.0	51 < G 35 < 76
76 < G 35 < 101	.0	.0	.0	.0	.0	.0	.0	.0	76 < G 35 < 101
101 < G 35 < 126	.0	.0	.0	.0	.0	.0	.0	.0	101 < G 35 < 126
126 < G 35 < 151	.1	.0	.0	.0	.0	.0	.0	.0	126 < G 35 < 151
151 < G 35 < 176	.4	.1	.0	.0	.1	.0	.0	.0	151 < G 35 < 176
176 < G 35 < 201	.6	.7	.1	.2	.3	.1	.3	.2	176 < G 35 < 201
201 < G 35 < 226	2.8	2.4	1.4	1.7	.9	1.2	1.3	.9	201 < G 35 < 226
226 < G 35 < 251	26.4	26.7	20.7	19.7	21.3	19.4	21.9	19.8	226 < G 35 < 251
251 < G 35 < 276	53.9	55.2	58.7	61.6	54.7	57.2	54.7	57.2	251 < G 35 < 276
276 < G 35 < 301	14.1	13.6	16.8	15.3	18.9	19.5	17.5	19.1	276 < G 35 < 301
301 < G 35 < 326	1.6	1.3	1.9	1.5	3.4	2.5	3.7	2.9	301 < G 35 < 326
326 < G 35 < 351	.1	.0	.3	.0	.4	.0	.5	.0	326 < G 35 < 351
351 < G 35 < 376	.0	.0	.0	.0	.0	.0	.0	.0	351 < G 35 < 376
376 < G 35 < 401	.0	.0	.0	.0	.0	.0	.0	.0	376 < G 35 < 401
401 < G 35 < 426	.0	.0	.0	.0	.0	.0	.0	.0	401 < G 35 < 426
426 < G 35 < 451	.0	.0	.0	.0	.0	.0	.0	.0	426 < G 35 < 451
451 < G 35 < 476	.0	.0	.0	.0	.0	.0	.0	.0	451 < G 35 < 476
476 < G 35 < 501	.0	.0	.0	.0	.0	.0	.0	.0	476 < G 35 < 501
501 < G 35	.0	.0	.0	.0	.0	.0	.0	.0	501 < G 35

MEAN:

258.8 259.3 262.8 261.5 264.1 263.8 263.5 264.1

VALID OBS:

1672 1739 1497 1617 1712 1443 2229 1055

MEAN

VALID OBS

Figure 20. 35 GHz attenuation rate (gaseous).

MAPSDEN SQUARE:  
 FOR: 7001-8412

1

GAS ATTN: 35 GHZ (DB/KM\*1000)

REVISION: 6.3

GAS ATTN 35 GHZ	MAY		JUNE		JULY		AUGUST		GAS ATTN 35 GHZ
	DAY %	NIGHT %	DAY %	NIGHT %	DAY %	NIGHT %	DAY %	NIGHT %	
G 35 < 1	.0	.0	.0	.0	.0	.0	.0	.0	G 35 < 1
1 < G 35 < 26	.0	.0	.0	.0	.0	.0	.0	.0	1 < G 35 < 26
26 < G 35 < 51	.0	.0	.0	.0	.0	.0	.0	.0	26 < G 35 < 51
51 < G 35 < 76	.0	.0	.0	.0	.0	.0	.0	.0	51 < G 35 < 76
76 < G 35 < 101	.0	.0	.0	.0	.0	.0	.0	.0	76 < G 35 < 101
101 < G 35 < 126	.0	.0	.0	.0	.0	.0	.0	.0	101 < G 35 < 126
126 < G 35 < 151	.0	.0	.0	.0	.0	.0	.0	.0	126 < G 35 < 151
151 < G 35 < 176	.1	.0	.0	.0	.1	.1	.1	.0	151 < G 35 < 176
176 < G 35 < 201	.1	.2	.9	.8	3.0	2.6	2.9	2.6	176 < G 35 < 201
201 < G 35 < 226	3.1	2.4	14.1	14.0	41.1	41.4	35.6	37.1	201 < G 35 < 226
226 < G 35 < 251	31.8	29.1	57.3	57.8	47.5	47.2	52.3	52.2	226 < G 35 < 251
251 < G 35 < 276	54.6	60.5	25.2	25.4	7.2	8.3	8.6	7.9	251 < G 35 < 276
276 < G 35 < 301	8.9	7.2	2.2	1.9	.9	.3	.6	.2	276 < G 35 < 301
301 < G 35 < 326	1.2	.6	.4	.2	.1	.1	.0	.0	301 < G 35 < 326
326 < G 35 < 351	.2	.0	.0	.0	.0	.0	.0	.0	326 < G 35 < 351
351 < G 35 < 376	.0	.0	.0	.0	.0	.0	.0	.0	351 < G 35 < 376
376 < G 35 < 401	.0	.0	.0	.0	.0	.0	.0	.0	376 < G 35 < 401
401 < G 35 < 426	.0	.0	.0	.0	.0	.0	.0	.0	401 < G 35 < 426
426 < G 35 < 451	.0	.0	.0	.0	.0	.0	.0	.0	426 < G 35 < 451
451 < G 35 < 476	.0	.0	.0	.0	.0	.0	.0	.0	451 < G 35 < 476
476 < G 35 < 501	.0	.0	.0	.0	.0	.0	.0	.0	476 < G 35 < 501
501 < G 35	.0	.0	.0	.0	.0	.0	.0	.0	501 < G 35

MEAN:

256.7 256.7

242.6 242.4

229.4 229.7

230.6 230.0

MEAN

VALID OBS:

2671

1392

1246

1126

1275

VALID OBS

Figure 21. 35 GHz attenuation rate (gaseous).

MARSHEN SQUARE:  
FOR: 1001-3412

1

GAS ATTN: 35 GHZ (DB/KM\*1000)

REVISION: 6.3

GAS ATTN 35 GHZ	SEPTEMBER		OCTOBER		NOVEMBER		DECEMBER		GAS ATTN 35 GHZ
	DAY %	NIGHT %	DAY %	NIGHT %	DAY %	NIGHT %	DAY %	NIGHT %	
G 35 < 1	.0	.0	.0	.0	.0	.0	.0	.0	G 35 < 1
1< G 35 < 26	.0	.0	.0	.0	.0	.0	.0	.0	1< G 35 < 26
26< G 35 < 51	.0	.0	.0	.0	.0	.0	.0	.0	26< G 35 < 51
51< G 35 < 76	.0	.0	.0	.0	.0	.0	.0	.0	51< G 35 < 76
76< G 35 < 101	.0	.0	.0	.0	.0	.0	.0	.0	76< G 35 < 101
101< G 35 < 126	.0	.0	.0	.0	.0	.0	.0	.0	101< G 35 < 126
126< G 35 < 151	.0	.0	.0	.0	.0	.0	.0	.0	126< G 35 < 151
151< G 35 < 176	.0	.0	.0	.1	.0	.0	.3	.2	151< G 35 < 176
176< G 35 < 201	1.1	.6	.7	.6	.2	.0	.7	.8	176< G 35 < 201
201< G 35 < 226	21.2	18.6	10.0	10.2	2.7	2.5	4.2	2.9	201< G 35 < 226
226< G 35 < 251	61.3	64.1	57.3	58.9	47.7	41.4	41.5	34.6	226< G 35 < 251
251< G 35 < 276	15.8	16.2	28.2	28.7	42.0	48.7	44.0	53.4	251< G 35 < 276
276< G 35 < 301	.5	.4	3.4	1.6	6.8	6.8	7.4	7.0	276< G 35 < 301
301< G 35 < 326	.0	.1	.4	.1	.6	.5	1.9	1.0	301< G 35 < 326
326< G 35 < 351	.0	.0	.0	.0	.0	.0	.1	.0	326< G 35 < 351
351< G 35 < 376	.0	.0	.0	.0	.0	.0	.0	.0	351< G 35 < 376
376< G 35 < 401	.0	.0	.0	.0	.0	.0	.0	.0	376< G 35 < 401
401< G 35 < 426	.0	.0	.0	.0	.0	.0	.0	.0	401< G 35 < 426
426< G 35 < 451	.0	.0	.0	.0	.0	.0	.0	.0	426< G 35 < 451
451< G 35 < 476	.0	.0	.0	.0	.0	.0	.0	.0	451< G 35 < 476
476< G 35 < 501	.0	.0	.0	.0	.0	.0	.0	.0	476< G 35 < 501
501< G 35	.0	.0	.0	.0	.0	.0	.0	.0	501< G 35

MEAN:

237.1 237.8

245.0 244.1

252.5 253.6

253.4 254.4

MEAN

VALID OBS:

2090 1412

1556 1942

1496 1871

1329 1606

VALID OBS

Figure 22. 35 GHz attenuation rate (gaseous).

MISSION SOURCE:  
 FCR:7001-8412

GAS ATTN: 94 GHZ (DB/NM\*100)

REVISION: 6.3

GAS ATTN 94 GHZ	JANUARY		FEBRUARY		MARCH		APRIL		GAS ATTN 94 GHZ
	DAY %	NIGHT %	DAY %	NIGHT %	DAY %	NIGHT %	DAY %	NIGHT %	
G 94 < 1	.0	.0	.0	.0	.0	.0	.0	.0	G 94 < 1
1< G 94 < 26	.0	.0	.0	.0	.0	.0	.0	.0	1< G 94 < 26
26< G 94 < 51	.0	.0	.0	.0	.0	.0	.0	.0	26< G 94 < 51
51< G 94 < 76	.4	.1	.0	.0	.0	.0	.0	.0	51< G 94 < 76
76< G 94 <101	1.9	1.8	.7	1.0	.6	.6	.6	.5	76< G 94 <101
101< G 94 <126	62.5	61.8	59.2	58.9	56.3	54.8	58.0	55.1	101< G 94 <126
126< G 94 <151	34.9	36.3	39.3	39.8	41.6	44.1	39.8	43.8	126< G 94 <151
151< G 94 <176	.3	.1	.8	.3	1.5	.6	1.5	.7	151< G 94 <176
176< G 94 <201	.0	.0	.0	.0	.0	.0	.0	.0	176< G 94 <201
201< G 94 <226	.0	.0	.0	.0	.0	.0	.0	.0	201< G 94 <226
226< G 94 <251	.0	.0	.0	.0	.0	.0	.0	.0	226< G 94 <251
251< G 94 <276	.0	.0	.0	.0	.0	.0	.0	.0	251< G 94 <276
276< G 94 <301	.0	.0	.0	.0	.0	.0	.0	.0	276< G 94 <301
301< G 94 <326	.0	.0	.0	.0	.0	.0	.0	.0	301< G 94 <326
326< G 94 <351	.0	.0	.0	.0	.0	.0	.0	.0	326< G 94 <351
351< G 94 <376	.0	.0	.0	.0	.0	.0	.0	.0	351< G 94 <376
376< G 94 <401	.0	.0	.0	.0	.0	.0	.0	.0	376< G 94 <401
401< G 94 <426	.0	.0	.0	.0	.0	.0	.0	.0	401< G 94 <426
426< G 94 <451	.0	.0	.0	.0	.0	.0	.0	.0	426< G 94 <451
451< G 94 <476	.0	.0	.0	.0	.0	.0	.0	.0	451< G 94 <476
476< G 94 <501	.0	.0	.0	.0	.0	.0	.0	.0	476< G 94 <501
501< G 94	.0	.0	.0	.0	.0	.0	.0	.0	501< G 94

MEAN:

122.5 122.8 124.6 124.0 125.2 125.1 124.9 125.3

MEAN

1672 1739 1497 1617 1712 1443 2229 1055

VALID OBS:

VALID OBS

Figure 23 94 GHz attenuation rate (gaseous).

MARSHAN SQUARE:  
 FURG001-9412

1

GAS ATIN: 94 GHZ (DB/MM\*100)

REVISION: 6.3

GAS ATIN 94 GHZ	MAY DAY %	MAY NIGHT %	JUNE DAY %	JUNE NIGHT %	JULY DAY %	JULY NIGHT %	AUGUST DAY %	AUGUST NIGHT %	GAS ATIN 94 GHZ
0 94 < 1	.0	.0	.0	.0	.0	.0	.0	.0	G 94 < 1
1 0 94 < 26	.0	.0	.0	.0	.0	.0	.0	.0	1 < G 94 < 26
26 0 94 < 51	.0	.0	.0	.0	.0	.0	.0	.0	26 < G 94 < 51
51 0 94 < 76	.1	.0	.0	.0	.1	.0	.0	.0	51 < G 94 < 76
76 0 94 < 101	1.1	1.3	6.3	5.8	22.0	22.1	19.6	20.9	76 < G 94 < 101
101 0 94 < 126	71.7	72.6	86.6	88.4	75.4	75.8	78.2	77.6	101 < G 94 < 126
126 0 94 < 151	26.7	26.1	7.0	5.8	2.4	2.0	2.1	1.5	126 < G 94 < 151
151 0 94 < 176	.4	.1	.1	.0	.1	.1	.0	.0	151 < G 94 < 176
176 0 94 < 201	.0	.0	.0	.0	.0	.0	.0	.0	176 < G 94 < 201
201 0 94 < 226	.0	.0	.0	.0	.0	.0	.0	.0	201 < G 94 < 226
226 0 94 < 251	.0	.0	.0	.0	.0	.0	.0	.0	226 < G 94 < 251
251 0 94 < 276	.0	.0	.0	.0	.0	.0	.0	.0	251 < G 94 < 276
276 0 94 < 301	.0	.0	.0	.0	.0	.0	.0	.0	276 < G 94 < 301
301 0 94 < 326	.0	.0	.0	.0	.0	.0	.0	.0	301 < G 94 < 326
326 0 94 < 351	.0	.0	.0	.0	.0	.0	.0	.0	326 < G 94 < 351
351 0 94 < 376	.0	.0	.0	.0	.0	.0	.0	.0	351 < G 94 < 376
376 0 94 < 401	.0	.0	.0	.0	.0	.0	.0	.0	376 < G 94 < 401
401 0 94 < 426	.0	.0	.0	.0	.0	.0	.0	.0	401 < G 94 < 426
426 0 94 < 451	.0	.0	.0	.0	.0	.0	.0	.0	426 < G 94 < 451
451 0 94 < 476	.0	.0	.0	.0	.0	.0	.0	.0	451 < G 94 < 476
476 0 94 < 501	.0	.0	.0	.0	.0	.0	.0	.0	476 < G 94 < 501
501 0 94	.0	.0	.0	.0	.0	.0	.0	.0	501 < G 94
MEAN:	121.4	121.5	114.2	114.1	107.3	107.5	107.9	107.6	MEAN
VALID OBS:	2671	1892	2456	1246	2302	1126	2542	1275	VALID OBS

Figure 24 94 GHZ Attenuation rate (gasous)

REVISION: 6.3

GAS ATTN: 94 GHZ (DB/RM\*100)

MANUAL SOURCE: 1

GAS ATTN 94 GHZ	SEPTEMBER		OCTOBER		NOVEMBER		DECEMBER		GAS ATTN 94 GHZ
	DAY	NIGHT	DAY	NIGHT	DAY	NIGHT	DAY	NIGHT	
G 94 < 1	.0	.0	.0	.0	.0	.0	.0	.0	G 94 < 1
1 < G 94 < 26	.0	.0	.0	.0	.0	.0	.0	.0	1 < G 94 < 26
26 < G 94 < 51	.0	.0	.0	.0	.0	.0	.0	.0	26 < G 94 < 51
51 < G 94 < 76	.0	.0	.0	.0	.0	.0	.2	.0	51 < G 94 < 76
76 < G 94 < 101	9.9	9.3	3.2	3.9	1.1	.7	2.2	2.4	76 < G 94 < 101
101 < G 94 < 126	87.7	88.7	87.5	89.3	81.0	81.3	76.1	76.0	101 < G 94 < 126
126 < G 94 < 151	2.4	1.9	9.2	6.8	17.7	18.0	20.6	21.6	126 < G 94 < 151
151 < G 94 < 176	.0	.0	.1	.0	.1	.0	.9	.1	151 < G 94 < 176
176 < G 94 < 201	.0	.0	.0	.0	.0	.0	.0	.0	176 < G 94 < 201
201 < G 94 < 226	.0	.0	.0	.0	.0	.0	.0	.0	201 < G 94 < 226
226 < G 94 < 251	.0	.0	.0	.0	.0	.0	.0	.0	226 < G 94 < 251
251 < G 94 < 276	.0	.0	.0	.0	.0	.0	.0	.0	251 < G 94 < 276
276 < G 94 < 301	.0	.0	.0	.0	.0	.0	.0	.0	276 < G 94 < 301
301 < G 94 < 326	.0	.0	.0	.0	.0	.0	.0	.0	301 < G 94 < 326
326 < G 94 < 351	.0	.0	.0	.0	.0	.0	.0	.0	326 < G 94 < 351
351 < G 94 < 376	.0	.0	.0	.0	.0	.0	.0	.0	351 < G 94 < 376
376 < G 94 < 401	.0	.0	.0	.0	.0	.0	.0	.0	376 < G 94 < 401
401 < G 94 < 426	.0	.0	.0	.0	.0	.0	.0	.0	401 < G 94 < 426
426 < G 94 < 451	.0	.0	.0	.0	.0	.0	.0	.0	426 < G 94 < 451
451 < G 94 < 476	.0	.0	.0	.0	.0	.0	.0	.0	451 < G 94 < 476
476 < G 94 < 501	.0	.0	.0	.0	.0	.0	.0	.0	476 < G 94 < 501
501 < G 94	.0	.0	.0	.0	.0	.0	.0	.0	501 < G 94

MEAN:	111.3	111.7	115.4	115.0	119.3	119.9	119.8	120.3	MEAN
VALID OBS:	2090	1412	1556	1942	1496	1871	1329	1606	VALID OBS

Figure 25 94 GHz attenuation rate (gaseous)

WASSON CAGE:  
FCR: 2001-5412

TOT ATIN: 35 GHz (DB/RM\*1000)

REVISION: 6.3

TOT ATIN 35 GHz	JANUARY DAY	JANUARY NIGHT	FEBRUARY DAY	FEBRUARY NIGHT	MARCH DAY	MARCH NIGHT	APRIL DAY	APRIL NIGHT	TOT ATIN 35 GHz
1	.0	.0	.0	.0	.0	.0	.0	.0	T 35 < 1
1	.0	.0	.0	.0	.0	.0	.0	.0	1 < T 35 < 26
26<	.0	.0	.0	.0	.0	.0	.0	.0	26< T 35 < 51
51<	.0	.0	.0	.0	.0	.0	.0	.0	51< T 35 < 76
76<	.0	.0	.0	.0	.0	.0	.0	.0	76< T 35 < 101
101<	.0	.0	.0	.0	.0	.0	.0	.0	101< T 35 < 126
126<	.1	.0	.0	.0	.0	.0	.0	.0	126< T 35 < 151
151<	.3	.1	.0	.0	.1	.0	.0	.0	151< T 35 < 176
176<	.7	.7	.1	.2	.3	.1	.3	.2	176< T 35 < 201
201<	2.6	2.1	1.3	1.6	.8	1.0	1.3	.8	201< T 35 < 226
226<	24.8	21.9	19.7	18.6	19.8	17.9	20.1	19.0	226< T 35 < 251
251<	52.2	53.9	56.9	59.2	52.9	54.8	50.7	55.0	251< T 35 < 276
276<	14.1	13.0	16.5	15.2	18.8	19.6	17.0	18.2	276< T 35 < 301
301<	1.5	1.2	1.9	1.4	3.5	2.4	3.7	2.7	301< T 35 < 326
326<	.1	.0	.3	.0	.4	.0	.5	.0	326< T 35 < 351
351<	.0	.0	.0	.0	.1	.1	.0	.0	351< T 35 < 376
376<	.0	.0	.0	.0	.4	.3	.0	.0	376< T 35 < 401
401<	.0	.0	.0	.0	.9	.6	.4	.3	401< T 35 < 426
426<	.0	.0	.0	.0	.1	.1	1.2	.3	426< T 35 < 451
451<	.0	.0	.0	.0	.0	.1	.5	.7	451< T 35 < 476
476<	.0	.0	.0	.1	.0	.0	.1	.0	476< T 35 < 501
501<	3.7	4.0	3.2	3.7	2.1	3.0	4.2	2.9	501< T 35

MEAN:	299.1	295.9	286.9	290.1	282.4	286.5	302.8	296.4	MEAN
VALID OBS:	1663	1335	1493	1616	1711	1441	2224	1053	VALID OBS

Figure 26 35 GHz Attenuation Data (10/20/01)

MEASURED SQUARE:  
FOREF001-8412

TOT ATTN: 35 GHZ (DB/RM\*1000)

REVISION: 6.3

TOT ATTN 35 GHZ	MAY		JUNE		JULY		AUGUST		TOT ATTN 35 GHZ
	DAY	NIGHT	DAY	NIGHT	DAY	NIGHT	DAY	NIGHT	
T 35 < 1	.0	.0	.0	.0	.0	.0	.0	.0	T 35 < 1
1< T 35 < 26	.0	.0	.0	.0	.0	.0	.0	.0	1< T 35 < 26
26< T 35 < 51	.0	.0	.0	.0	.0	.0	.0	.0	26< T 35 < 51
51< T 35 < 76	.0	.0	.0	.0	.0	.0	.0	.0	51< T 35 < 76
76< T 35 < 101	.0	.0	.0	.0	.0	.0	.0	.0	76< T 35 < 101
101< T 35 < 126	.0	.0	.0	.0	.0	.0	.0	.0	101< T 35 < 126
126< T 35 < 151	.0	.0	.0	.0	.0	.0	.0	.0	126< T 35 < 151
151< T 35 < 176	.1	.0	.0	.0	.1	.1	.1	.0	151< T 35 < 176
176< T 35 < 201	.1	.2	.9	.5	3.0	2.6	2.9	2.5	176< T 35 < 201
201< T 35 < 226	2.9	2.4	13.9	13.4	40.6	41.4	35.3	36.4	201< T 35 < 226
226< T 35 < 251	28.9	27.3	53.8	55.0	44.9	45.1	49.1	50.2	226< T 35 < 251
251< T 35 < 276	47.5	55.1	21.9	22.9	6.7	7.7	7.8	7.3	251< T 35 < 276
276< T 35 < 301	8.3	6.6	1.9	1.6	.9	.3	.6	.2	276< T 35 < 301
301< T 35 < 326	1.1	.5	.4	.2	.1	.1	.0	.1	301< T 35 < 326
326< T 35 < 351	.2	.0	.0	.0	.0	.0	.0	.0	326< T 35 < 351
351< T 35 < 376	.0	.0	.0	.0	.0	.0	.0	.0	351< T 35 < 376
376< T 35 < 401	.0	.0	.0	.0	.0	.0	.0	.0	376< T 35 < 401
401< T 35 < 426	1.0	.9	.0	.0	.2	.2	.1	.1	401< T 35 < 426
426< T 35 < 451	1.8	1.7	.0	.0	.1	.2	.3	.2	426< T 35 < 451
451< T 35 < 476	.8	.6	.0	.1	.6	.0	.6	.9	451< T 35 < 476
476< T 35 < 501	.1	.1	.0	.0	.5	.4	.4	.8	476< T 35 < 501
501< T 35	7.1	4.6	7.2	6.4	2.3	2.0	2.7	1.5	501< T 35
MEAN:	317.3	298.6	302.3	293.5	252.9	251.8	254.1	242.1	MEAN
VALID OBS:	2665	1390	2449	1240	2300	1124	2533	1272	VALID OBS

Figure 27. 35 GHz attenuation rate (total).

MARSHEN SQUARE:  
FOG 7101-5412

TOT ATTN: 35 GHZ (DB/KM\*1000)

REVISION: 6.3

TOT ATTN 35 GHZ	SEPTEMBER DAY %	SEPTEMBER NIGHT %	OCTOBER DAY %	OCTOBER NIGHT %	NOVEMBER DAY %	NOVEMBER NIGHT %	DECEMBER DAY %	DECEMBER NIGHT %	TOT ATTN 35 GHZ
T 35 < 1	.0	.0	.0	.0	.0	.0	.0	.0	T 35 < 1
1 < T 35 < 26	.0	.0	.0	.0	.0	.0	.0	.0	1 < T 35 < 26
26 < T 35 < 51	.0	.0	.0	.0	.0	.0	.0	.0	26 < T 35 < 51
51 < T 35 < 76	.0	.0	.0	.0	.0	.0	.0	.0	51 < T 35 < 76
76 < T 35 < 101	.0	.0	.0	.0	.0	.0	.0	.0	76 < T 35 < 101
101 < T 35 < 126	.0	.0	.0	.0	.0	.0	.0	.0	101 < T 35 < 126
126 < T 35 < 151	.0	.0	.0	.0	.0	.0	.0	.0	126 < T 35 < 151
151 < T 35 < 176	.0	.0	.0	.1	.0	.0	.3	.2	151 < T 35 < 176
176 < T 35 < 201	1.1	.6	.7	.6	.2	.0	.6	.8	176 < T 35 < 201
201 < T 35 < 226	20.9	18.6	9.8	10.0	2.7	2.5	3.7	2.8	201 < T 35 < 226
226 < T 35 < 251	56.9	62.0	54.5	56.1	45.5	40.2	40.1	33.2	226 < T 35 < 251
251 < T 35 < 276	15.1	14.7	26.1	26.8	40.0	46.3	42.2	52.0	251 < T 35 < 276
276 < T 35 < 301	.6	.4	3.3	1.6	6.6	6.8	7.4	6.7	276 < T 35 < 301
301 < T 35 < 326	.0	.1	.5	.1	.6	.5	1.9	1.0	301 < T 35 < 326
326 < T 35 < 351	.0	.0	.0	.0	.0	.0	.1	.0	326 < T 35 < 351
351 < T 35 < 376	.0	.0	.0	.0	.0	.0	.0	.0	351 < T 35 < 376
376 < T 35 < 401	.0	.0	.0	.0	.0	.0	.0	.0	376 < T 35 < 401
401 < T 35 < 426	.0	.0	.0	.0	.0	.0	.0	.0	401 < T 35 < 426
426 < T 35 < 451	.0	.0	.0	.0	.0	.0	.0	.0	426 < T 35 < 451
451 < T 35 < 476	.0	.0	.0	.0	.0	.0	.0	.0	451 < T 35 < 476
476 < T 35 < 501	.0	.0	.1	.1	.0	.0	.0	.2	476 < T 35 < 501
501 < T 35	5.3	3.7	5.1	4.7	4.4	3.8	3.6	3.1	501 < T 35

MEAN: 276.3 267.0 285.6 275.9 279.6 285.4 281.5 283.1 MEAN

VALID OBS: 2086 1407 1553 1939 1494 1870 1318 1588 VALID OBS

Figure 28. 35 GHz attenuation rate (total)

MAXIMUM SOURCE: 1  
 FOR: 7001-8412

TOT ATTN: 94 GHZ (DB/KM\*100)

REVISION: 6.3

TOT ATTN 94 GHZ	JANUARY DAY %	JANUARY NIGHT %	FEBRUARY DAY %	FEBRUARY NIGHT %	MARCH DAY %	MARCH NIGHT %	APRIL DAY %	APRIL NIGHT %	TOT ATTN 94 GHZ
T 94 < 1	.0	.0	.0	.0	.0	.0	.0	.0	T 94 < 1
1< T 94 < 26	.0	.0	.0	.0	.0	.0	.0	.0	1< T 94 < 26
26< T 94 < 51	.0	.0	.0	.0	.0	.0	.0	.0	26< T 94 < 51
51< T 94 < 76	.4	.1	.0	.0	.0	.0	.0	.0	51< T 94 < 76
76< T 94 < 101	1.6	1.8	.7	.9	.5	.6	.6	.5	76< T 94 < 101
101< T 94 < 126	59.5	59.1	56.6	56.2	53.4	51.5	53.1	53.5	101< T 94 < 126
126< T 94 < 151	34.6	35.0	38.7	38.8	40.9	43.1	38.3	41.4	126< T 94 < 151
151< T 94 < 176	.3	.1	.8	.3	1.5	.6	1.4	.5	151< T 94 < 176
176< T 94 < 201	.0	.0	.0	.0	.2	.3	.0	.0	176< T 94 < 201
201< T 94 < 226	.0	.0	.0	.0	1.3	.8	1.3	.3	201< T 94 < 226
226< T 94 < 251	.0	.0	.0	.2	.0	.1	1.0	.9	226< T 94 < 251
251< T 94 < 276	.1	.0	.7	1.2	.4	.2	.0	.0	251< T 94 < 276
276< T 94 < 301	.1	.4	.5	.3	.0	.3	.4	.2	276< T 94 < 301
301< T 94 < 326	.5	.9	.1	.1	.0	.1	.7	.0	301< T 94 < 326
326< T 94 < 351	.4	.7	.0	.1	.2	.6	.0	.0	326< T 94 < 351
351< T 94 < 376	.0	.0	.4	.1	.4	.2	.2	.1	351< T 94 < 376
376< T 94 < 401	.0	.0	.0	.1	.1	.4	.5	.7	376< T 94 < 401
401< T 94 < 426	.2	.4	.0	.0	.3	.5	.3	.4	401< T 94 < 426
426< T 94 < 451	.8	.5	.3	.1	.1	.0	.4	.2	426< T 94 < 451
451< T 94 < 476	.1	.1	.3	.4	.0	.1	.6	.3	451< T 94 < 476
476< T 94 < 501	.0	.0	.3	.4	.1	.1	.1	.1	476< T 94 < 501
501< T 94	1.4	1.0	.7	.9	.5	.6	1.1	1.0	501< T 94

MEAN:	136.8	136.1	134.0	134.9	132.9	134.7	140.8	137.6	MEAN
VALID OBS:	1668	1795	1493	1616	1711	1441	2224	1053	VALID OBS

Figure 29 94 GHZ attenuation rate (total).

MANUSCRIPT NUMBER:  
 FOR: 701-3412

IOF ATIN: 94 GHZ (DE/RM\*100)

REVISION: 6.3

IOF ATIN 94 GHZ	MAY DAY %	MAY NIGHT %	JUNE DAY %	JUNE NIGHT %	JULY DAY %	JULY NIGHT %	AUGUST DAY %	AUGUST NIGHT %	TOT ATIN 94 GHZ
F 94 < 1	.0	.0	.0	.0	.0	.0	.0	.0	T 94 < 1
1< T 94 < 26	.0	.0	.0	.0	.0	.0	.0	.0	1< T 94 < 26
26< T 94 < 51	.0	.0	.0	.0	.0	.0	.0	.0	26< T 94 < 51
51< T 94 < 76	.1	.0	.0	.0	.1	.0	.0	.0	51< T 94 < 76
76< T 94 < 101	1.0	1.3	6.2	5.2	21.9	21.9	19.6	20.7	76< T 94 < 101
101< T 94 < 126	64.1	67.5	80.2	83.4	71.8	73.2	74.1	74.8	101< T 94 < 126
126< T 94 < 151	23.5	23.2	6.2	5.0	2.4	2.0	2.0	1.1	126< T 94 < 151
151< T 94 < 176	.4	.1	.1	.0	.1	.1	.0	.1	151< T 94 < 176
176< T 94 < 201	.0	.0	.0	.0	.0	.0	.0	.0	176< T 94 < 201
201< T 94 < 226	2.1	2.2	.0	.0	.3	.3	.2	.2	201< T 94 < 226
226< T 94 < 251	1.6	1.1	.0	.1	1.3	.5	1.3	1.7	226< T 94 < 251
251< T 94 < 276	.1	.0	1.2	1.2	.4	.2	.4	.6	251< T 94 < 276
276< T 94 < 301	1.1	.5	1.5	1.7	.2	.0	.0	.0	276< T 94 < 301
301< T 94 < 326	.6	.4	.3	.2	.0	.0	.2	.2	301< T 94 < 326
326< T 94 < 351	.1	.1	.1	.1	.1	.1	.2	.1	326< T 94 < 351
351< T 94 < 376	1.5	.4	.2	.1	.0	.1	.0	.0	351< T 94 < 376
376< T 94 < 401	1.3	1.2	.3	.2	.0	.1	.2	.0	376< T 94 < 401
401< T 94 < 426	.2	.1	.4	.2	.2	.2	.8	.2	401< T 94 < 426
426< T 94 < 451	.3	.4	.3	.0	.2	.3	.4	.4	426< T 94 < 451
451< T 94 < 476	.6	.2	.2	.4	.3	.3	.1	.0	451< T 94 < 476
476< T 94 < 501	.0	.2	.4	.3	.0	.0	.0	.0	476< T 94 < 501
501< T 94	1.6	1.0	2.2	1.9	.7	.8	.4	.0	501< T 94
MEAN:	146.5	139.0	136.8	133.5	116.6	115.8	117.8	113.4	MEAN
VALID OBS:	2655	1390	2449	1240	2300	1124	2533	1272	VALID OBS

Figure 30 - 94 GHz ground station data (total)

TABLE 31 (Cont'd)

101 APRIL 94 GEE (DB/KM\*100)

REVISION: 6.3

TOT AWIN 94 GEE	SEPTEMBER		OCTOBER		NOVEMBER		DECEMBER		TOT AWIN 94 GEE
	DAY	NIGHT	DAY	NIGHT	DAY	NIGHT	DAY	NIGHT	
1 < T 94 < 1	.0	.0	.0	.0	.0	.0	.0	.0	T 94 < 1
1 < T 94 < 26	.0	.0	.0	.0	.0	.0	.0	.0	1 < T 94 < 26
26 < T 94 < 51	.0	.0	.0	.0	.0	.0	.0	.0	26 < T 94 < 51
51 < T 94 < 76	.0	.0	.0	.0	.0	.0	.2	.0	51 < T 94 < 76
76 < T 94 < 101	9.7	9.4	3.1	3.8	1.1	.7	1.9	2.3	76 < T 94 < 101
101 < T 94 < 126	82.6	85.0	83.1	85.1	77.2	78.2	73.5	73.0	101 < T 94 < 126
126 < T 94 < 151	2.5	1.9	8.6	6.2	17.1	17.3	19.9	21.3	126 < T 94 < 151
151 < T 94 < 176	.0	.0	.1	.0	.1	.0	.9	.1	151 < T 94 < 176
176 < T 94 < 201	.0	.0	.0	.0	.0	.0	.0	.0	176 < T 94 < 201
201 < T 94 < 226	.0	.0	.0	.0	.0	.0	.0	.0	201 < T 94 < 226
226 < T 94 < 251	.0	.0	.1	.2	.0	.0	.1	.3	226 < T 94 < 251
251 < T 94 < 276	1.3	1.2	1.3	2.1	1.6	.9	.9	1.1	251 < T 94 < 276
276 < T 94 < 301	1.1	.6	.7	.6	.6	.5	.4	.1	276 < T 94 < 301
301 < T 94 < 326	.1	.0	.0	.0	.1	.1	.0	.0	301 < T 94 < 326
326 < T 94 < 351	.0	.0	.1	.0	.1	.0	.1	.0	326 < T 94 < 351
351 < T 94 < 376	.2	.1	.1	.2	.5	.3	.4	.1	351 < T 94 < 376
376 < T 94 < 401	.3	.2	.1	.1	.2	.1	.2	.1	376 < T 94 < 401
401 < T 94 < 426	.0	.0	.1	.0	.1	.0	.0	.0	401 < T 94 < 426
426 < T 94 < 451	.0	.0	.0	.1	.0	.1	.2	.0	426 < T 94 < 451
451 < T 94 < 476	.3	.2	.6	.4	.4	.2	.3	.2	451 < T 94 < 476
476 < T 94 < 501	.6	.4	1.2	.6	.5	.5	.5	.4	476 < T 94 < 501
501 < T 94	1.2	.9	1.0	.8	.4	1.2	.7	.9	501 < T 94
MEAN:	126.6	122.7	131.0	127.6	130.4	131.8	130.6	130.7	MEAN
VALID OBS:	2086	1407	1553	1939	1494	1870	1318	1588	VALID OBS

Figure 31 94 GHz attenuation rate (total)



MARSDEN SQUARE: 1  
 FOR: 7001-8412

PAULUS DUCT HEIGHT VS  
 WIND SPEED (M/SEC)

REVISION: 6.3

DUCT HEIGHT (M)	PAULUS DUCT HEIGHT VS WIND SPEED (M/SEC)																DUCT HEIGHT (M)							
	0-	1-	2-	3-	4-	5-	6-	7-	8-	9-	10-	11-	12-	13-	14-	15-		16-	17-	18-	19-	20-	20>	
00-02	0	14	10	18	15	26	14	12	4	3	0	1	0	1	0	0	0	0	0	0	0	0	0	00-02
02-04	0	132	60	26	12	16	11	9	6	1	0	1	0	0	0	0	0	0	0	0	0	0	0	02-04
04-06	0	236	182	104	37	36	21	20	6	6	1	0	0	1	0	0	0	0	0	0	0	0	0	04-06
06-08	0	34	279	276	113	121	68	30	8	5	2	0	0	0	0	0	0	0	0	0	0	0	0	06-08
08-10	0	1	189	533	240	245	122	52	19	11	5	0	0	0	1	0	0	0	0	0	0	0	0	08-10
10-12	0	0	56	547	394	465	229	125	54	27	5	1	1	0	1	0	0	0	0	0	0	0	0	10-12
12-14	0	0	3	182	257	630	342	181	77	28	20	3	0	1	1	0	0	0	0	0	0	0	0	12-14
14-16	0	0	2	32	84	436	337	279	122	44	20	5	2	1	0	0	0	0	0	0	0	0	0	14-16
16-18	0	0	1	3	13	161	169	216	125	51	27	9	1	1	0	0	0	0	0	0	0	0	0	16-18
18-20	0	0	0	2	4	33	72	130	79	54	32	11	2	3	0	0	1	0	0	0	0	0	0	18-20
20-22	0	0	0	0	1	7	19	47	57	25	25	19	1	1	0	0	0	0	0	0	0	0	0	20-22
22-24	0	0	0	0	1	2	6	14	16	16	14	9	1	2	0	0	0	0	0	0	0	0	0	22-24
24-26	0	0	0	0	0	1	1	6	7	1	3	4	2	1	0	0	0	0	0	0	0	0	0	24-26
26-28	0	0	0	0	0	0	1	1	3	1	2	1	0	0	0	0	0	0	0	0	0	0	0	26-28
28-30	0	0	0	0	0	0	0	1	0	0	0	0	0	1	0	0	0	0	0	0	0	0	0	28-30
30-32	0	0	0	0	0	0	0	0	1	0	0	0	0	0	0	0	0	0	0	0	0	0	0	30-32
32-34	0	0	0	0	0	0	0	0	0	0	0	0	0	0	0	0	0	0	0	0	0	0	0	32-34
34-36	0	0	0	0	0	0	0	0	0	0	0	0	0	0	0	0	0	0	0	0	0	0	0	34-36
36-38	0	0	0	0	0	0	0	0	0	0	0	0	0	0	0	0	0	0	0	0	0	0	0	36-38
38-40	0	0	0	0	0	0	0	0	0	0	0	0	0	0	0	0	0	0	0	0	0	0	0	38-40
>= 40	0	0	0	0	0	0	0	0	0	0	0	0	0	0	0	0	0	0	0	0	0	0	0	>= 40
UNDF	0	0	0	0	0	0	0	0	0	0	0	0	0	0	0	0	0	0	0	0	0	0	0	UNDF

# OBS : 17724( 17724)    SCAIED: 17723.99    RATIO : 1.000

Figure 33 Paulus crossed with wind



## REFERENCES

1. Paulus, R.A., 29 June 1984, Practical Application of the IREPS Evaporation Duct Model, NOSC Technical Report 966.
2. Jeske, H., February 1971, "The State of Radar Range Prediction Over Sea." Tropospheric Radio Wave Propagation - Part II, NATO-AGARD.
3. Goroeh, A.K., May 1984, Rain Rate Climatologies Over Maritime Regions, Naval Environmental Research Prediction Facility Technical Report 84-04.
4. Cook, J., Private Communication.
5. Liebe, H.F., November-December 1981, "Modeling Attenuation and Phase of Radio Waves in Air at Frequencies Below 1,000 GHz", *Radio Science*, Vol 16, No 6.
6. Falcone, V.J., 15 October 1979, Atmospheric Attenuation of Millimeter and Submillimeter Waves: Models and Computer Code, AFGL-TR-79-0253.

END

FILMED

MARCH, 19 88

DTIC