

AD-A193 211

EFFECT OF THE MATRIX ON THE CREEP-BEHAVIOR OF
CARBON-CARBON COMPOSITE(U) CALIFORNIA UNIV LOS ANGELES
DEPT OF MATERIALS SCIENCE AND ENG. G H SINES ET AL.

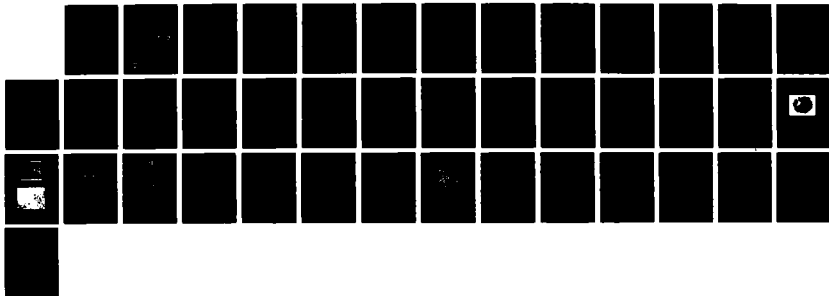
1/1

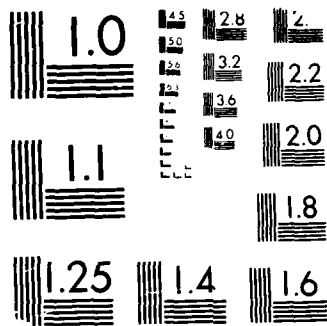
UNCLASSIFIED

NOV 87 UCLA-ENG-87-44 N00014-85-K-0667

F/G 11/4

NL





MICROCOPY RESOLUTION TEST CHART

10001 JANUARY 1963-A

**UCLA
School
of
Engineering
and
Applied
Science**

4

DTIC FILE

AD-A193 211

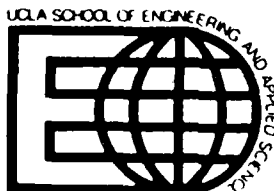
DTIC
ELECTE
MAR 14 1988
S H D

**Effect of the Matrix on the
Creep-Behavior of
Carbon-Carbon Composite**

by George H. Sines, Zheng Yang, Brian D. Vickers

ONR-N00014-85-K-0667
L.H.Peebles, Monitor

UCLA-ENG-87-44
November 1987



88 8 17 9 52

DISTRIBUTION STATEMENT A

Approved for public release;
Distribution Unlimited

EFFECT OF THE MATRIX ON THE
CREEP-BEHAVIOR OF CARBON-CARBON COMPOSITES

by

George H. Sines, Zheng Yang, and Brian D. Vickers

Department of Material Science and Engineering
School of Engineering and Applied Science
University of California
Los Angeles

Technical Report

Prepared for
Department of the Navy
Office of Naval Research
Arlington, Virginia 22217

Monitor, Dr. L.H. Peebles, Jr.

Contract No. N00014-85-K-0667

November 1987

REPORT DOCUMENTATION PAGE

1a. REPORT SECURITY CLASSIFICATION unclassified		1b. RESTRICTIVE MARKINGS AD-A193211	
2a. SECURITY CLASSIFICATION AUTHORITY		3. DISTRIBUTION / AVAILABILITY OF REPORT unlimited	
2b. DECLASSIFICATION / DOWNGRADING SCHEDULE			
4. PERFORMING ORGANIZATION REPORT NUMBER(S) UCLA-ENG-87-44		5. MONITORING ORGANIZATION REPORT NUMBER(S)	
6a. NAME OF PERFORMING ORGANIZATION UCLA Dept of Mat Sci & Engr School of Engr and Applied Sci	6b. OFFICE SYMBOL (if applicable)	7a. NAME OF MONITORING ORGANIZATION Monitor, Dr. L.H. Peebles, Jr. Office of Naval Research	
6c. ADDRESS (City, State, and ZIP Code) Los Angeles, Calif. 90024		7b. ADDRESS (City, State, and ZIP Code) Arlington, Virginia 22217	
8a. NAME OF FUNDING / SPONSORING ORGANIZATION	8b. OFFICE SYMBOL (if applicable)	9. PROCUREMENT INSTRUMENT IDENTIFICATION NUMBER N00014-85-K-0667	
8c. ADDRESS (City, State, and ZIP Code)		10. SOURCE OF FUNDING NUMBERS	
		PROGRAM ELEMENT NO.	PROJECT NO.
		TASK NO.	WORK UNIT ACCESSION NO.
11. TITLE (Include Security Classification) Effect of the Matrix on the Creep-Behavior of Carbon-Carbon Composites			
12. PERSONAL AUTHOR(S) George H. Sines, Zheng Yang, Brian D. Vickers			
13a. TYPE OF REPORT technical	13b. TIME COVERED FROM TO	14. DATE OF REPORT (Year, Month, Day) November 1987	15. PAGE COUNT 33
16. SUPPLEMENTARY NOTATION			
17. COSATI CODES		18. SUBJECT TERMS (Continue on reverse if necessary and identify by block number)	
FIELD	GROUP	Carbon-Carbon Composites Creep-Behavior	
		Carbon Fibers Creep Testing	
		Carbon Matrix	
19. ABSTRACT (Continue on reverse if necessary and identify by block number) Creep specimens and experiments were designed to determine the properties of carbon-carbon composites at high temperatures (over 2310°C) and at high stress levels (over 770 MPa). During the course of these experiments it was observed that the carbon matrix greatly increases the creep resistance of carbon fibers in properly impregnated, uniaxial composites. Results show how a composite specimen crept 3.6% after 5.9 hrs. of testing while a matrix-free specimen, at the same test conditions, ruptured with 138% strain after only 0.39 hrs. This improvement is attributed to the alignment of the mesophase layers of the carbon matrix, which distribute tensile loads more evenly amongst the filaments and which may also alter the filaments' stress state by restricting transverse strains. Also of interest was the large primary creep response associated with the composite at these high stress and temperature levels. Because it was such a large percentage of the entire response, this initial, (over)			
20. DISTRIBUTION / AVAILABILITY OF ABSTRACT <input checked="" type="checkbox"/> UNCLASSIFIED/UNLIMITED <input type="checkbox"/> SAME AS RPT <input type="checkbox"/> DTIC USERS		21. ABSTRACT SECURITY CLASSIFICATION unclassified	
22a. NAME OF RESPONSIBLE INDIVIDUAL		22b. TELEPHONE (Include Area Code)	22c. OFFICE SYMBOL

19. (continued)

transient creep should become the main design parameter of any attempt to relax bundle stresses in the fabrication of carbon-carbon billets.



Accession For	
NTIS GRA&I	<input checked="" type="checkbox"/>
DTIC TAB	<input type="checkbox"/>
Unannounced	<input type="checkbox"/>
Justification	
By	
Distribution/	
Availability Codes	
Dist	Avail and/or Special
A-1	

ABSTRACT

Creep specimens and experiments were designed to determine the properties of carbon-carbon composites at high temperatures (over 2310 C) and at high stress levels (over 770 MPa). During the course of these experiments it was observed that the carbon matrix greatly increases the creep resistance of carbon fibers in properly impregnated, uniaxial composites. Results show how a composite specimen crept 3.6% after 5.9 hrs. of testing while a matrix-free specimen, at the same test conditions, ruptured with 138% strain after only 0.39 hrs. This improvement is attributed to the alignment of the mesophase layers of the carbon matrix, which distribute tensile loads more evenly amongst the filaments and which may also alter the filaments' stress state by restricting transverse strains. Also of interest was the large primary creep response associated with the composite specimens at these high stress and temperature levels. Because it was such a large percentage of the entire response, this initial, transient creep should become the main design parameter of any attempt to relax bundle stresses in the fabrication of carbon-carbon billets.

ACKNOWLEDGEMENTS

The authors would like to thank Leslie Feldman of The Aerospace Corporation for his thoughtful advice, Philip Ehrens for fig. 3c, and especially Fred Weiler for his help with the equipment and instrumentation.

TABLE OF CONTENTS

Abstract	ii
Acknowledgements	iii
List of Figures & Tables	v
Introduction	1
Experimental	3
Results and Discussion	9
Conclusion	14
Figures and Tables	16
References	28

LIST OF FIGURES AND TABLES

Fig. 1 Diagram of creep specimen.....16
Fig. 2 Specimen carbonization schedule.....17
Fig. 3 Photographs of a specimen cross section..18
Fig. 4 Diagram of a graphite sheath.....20
Fig. 5 Diagram of experimental apparatus.....21
Fig. 6 Diagram of loading beam.....23
Fig. 7 Elongation vs. Time plot.....24
Fig. 8 Photograph of post-creep specimen.....26

Tab. 1 Summary of data.....27

INTRODUCTION

Cylindrical weave, carbon-carbon composites have successfully been utilized as integral throat and entrance components for advanced rocket nozzle applications. Possessors of unique thermo-mechanical properties, their use has improved the reliability and performance of these systems. However, problems have occurred during their fabrication as a number of carbon-carbon composite billets have either fractured or developed severe structural anomalies [1]. Generally accepted as responsible for these problems are the high thermal stresses caused by repeated heatings to the high graphitization temperatures of processing [2,3].

The emergence of advanced composite materials over the past twenty years is well-documented, [eg. see Fitzer, ref. 4, for a thorough review of carbon-carbon composites]. In the area of carbon-carbon research a great deal of effort has been spent in trying to understand what happens to these composite billets during their fabrication. Investigators have looked at fiber and matrix properties [5,6], stress distributions in the billet during heating and cooling [2,7], failure mechanisms and crack morphology [1,3] etc ... Our group has been focusing on the creep of carbon-carbon composites at high stress levels and at high temperatures [7,8], as these are the conditions which the billet encounters during its fabrication. The quantitative information derived from our study is needed so that time-temperature processing paths might be designed which would minimize thermal stresses via creep. During the course of experiments developed to measure carbon-carbon composite creep, some interesting qualitative observations were made regarding the role of the carbon matrix on the creep-behavior of the carbon yarn.

Creep studies of carbon-carbon composites are few, [refs.7,8,9,10,11,12,13 are all that we are aware of], and they do not consider how the two carbon phases interact. As

for advanced composites in general, a fairly extensive amount of theoretical and experimental work on creep-behavior is available, [see refs. 14 and 15 for example], but again, attention given to the interactions of the composite's constituents is lacking. Typically, the creep behavior of advanced composites is modeled in the following ways: For composites with discontinuous fibers the matrix usually assumes the role of limiting factor because its melting point is generally lower than the fibers. For continuous composites, two cases are considered: that of rigid fibers in a creeping matrix and that of creeping fibers in a creeping matrix [14]. These models, however, do not seem applicable to carbon-carbon composites.

With the above serving as a backdrop, this paper reports that the carbon matrix substantially improves the creep resistance of the carbon fibers and that this improvement is a strong function of the degree of interfacial bonding. In conjunction with reporting these findings, the testing methods and specimens developed to measure creep in uniaxial, carbon-carbon composites are also described. These methods and specimens are being used in a study in progress on the activation energy and stress exponent of creep.

EXPERIMENTAL

The proper design and preparation of the experiment's creep specimens was vital if meaningful data were to be gathered. The design of the specimens had to satisfy these two requirements: that the specimens be strong enough to permit testing at high stress levels and that an accurate gage length be established. There was also two important factors regarding the specimens' preparation: that there be adequate impregnation and interfacial bonding of the carbon yarn by the carbon matrix, and that oxidation be avoided during the pyrolysis process. These procedures, which are about to be described, are derived from the work done by Quan [7] and Mack [8], with several modifications made by the authors.

Graphite fiber yarn, as received from Hercules Incorporated, (designated as HMPVA-3K with 3000 PAN-based graphite filaments per yarn; nominal filament diameter of 7 microns), were looped and cut to size, (as shown in fig.1), with a single yarn extending the length of the specimen. Cotton ties were used to hold the specimen's shape during pyrolysis as their organic composition allowed them to maintain their strength at high temperatures in an inert atmosphere before turning to carbon. The six-yarn reinforced sections, which defined the one inch test section, formed strong loops at the ends which permitted testing at high stress levels. The specimens were further reinforced by two small graphite blocks which prevented the end loops of the impregnated graphite yarn from splitting open while under load.

Processing these tied, graphite fiber specimens into carbon-carbon composite test specimens involved the following series of steps. First, the as-received yarn had a protective sizing on it which was found to greatly hinder matrix bonding if not properly removed. The most effective method was one which thermally removed the sizing from the

yarn at a temperature of 350 C for ten minutes in an inert atmosphere.

Coal tar pitch, (produced by the Allied Chemical Corp. and designated as CP277-15V), was the medium used as matrix precursor. This pitch was first preheated at a temperature of 300 C for approximately two hours in a nitrogen atmosphere to drive off many of the volatiles and impurities contained within. It was then finely ground and used as impregnate.

Impregnation of the specimen was done at a temperature of 250 C in a nitrogen atmosphere in a horizontal tube furnace. The tied specimens were placed in a steel trough, buried beneath a mound of ground pitch, and then were slowly wetted by the impregnate which melted with the rising temperature. After approximately three hours of immersion in this molten pitch bath, the specimens were removed, gently stretched so as to straighten and then carbonized.

Carbonization of the impregnated specimens was done by heating to a temperature of 900 C in a nitrogen atmosphere. (The carbonization schedule is shown in fig. 2.) Heating occurred over a 58 hour period, during which the coal tar pitch slowly passed through its mesophase state (about 450 C) as it hardened. A slow heating rate was needed to limit the percolation of any residual pitch volatiles within the specimen so that distortions of the matrix microstructure from bubble pores might be restrained. Completion of the carbonization process yielded uniaxial, carbon matrix-carbon (graphite) fiber, creep specimens ready to be graphitized and tested.

The preparation of the creep specimens in this manner yielded sufficiently dense specimens with well-bonded filaments. (This judgment was supported by simple four point bend tests performed on trial specimens - they fractured brittlely.) It should be noted that only one impregnation-carbonization cycle was necessary to achieve proper densification. This is in contrast with the fabrication of a typical carbon-carbon billet which goes through several high pressure cycles to fill cooling cracks and to replace volatilized material [3]. The relatively

small scale of the test specimens along with the absence of transverse fibers and matrix pockets helps to account for this processing advantage. Cross sections of our test specimens are shown in fig. 3.

That only one combination of fiber and coal-tar pitch was used for the test specimens should not effect the generality of the results as far as the influence of the matrix on the yarns' creep-behavior is concerned. This assertion is supported by White and Sheaffer [16] who observed consistent patterns of wetting and mesophase alignment regardless of fiber type. Their work also showed that the pressure during the pyrolysis process had little effect on the matrix's microstructure, with bloating still active in the matrix even at 15 ksi. (The pressure on our test specimens were slightly above atmospheric and some bubble pores were discovered.) Finally, rupture tests performed by Mack [8] on similarly prepared specimens had tensile strength values between 185 and 260 ksi at room temperature.

To show how the matrix affects the fiber's creep behavior, a specimen was needed with a test section composed of graphite yarn without the carbon matrix. This condition was partially achieved accidentally when a solvent, (methyl-ethyl-ketone, or MEK), was used to remove the sizing in place of the thermal method. But the MEK, instead of removing the sizing, only dissolve it and then leave behind a sizing residue on the specimens' surfaces as it evaporated. This residue would greatly inhibit impregnation with the resulting specimens left relatively free of any properly bonded matrix. This condition was further exacerbated when the MEK was reused several times; the result being a progressive increase of residue left in and on the specimens and increasingly poorer impregnation. The poor performance of the specimens prepared in this manner was the first indication of the strengthening effects that the carbon matrix could have on the creep resistance of properly impregnated graphite yarn.

To fully demonstrate this strengthening effect a specimen with a gage section completely free of matrix was required. To create such a specimen, special care had to be

taken during pyrolysis to prevent any fiber wetting during impregnation and any carbon vapor deposition during carbonization. This was accomplished by tightly covering the single yarn test section with a graphite casing, (see fig.4). By using this casing the rest of the specimen - namely its reinforced sections - could still be properly processed so that it would be strong enough to sustain the test loads.

The testing apparatus used for these experiments centered around an electric resistance, graphite element furnace, (from Astro Furnace, model number 2570), which we modified for our purposes. The graphitization of the specimens and their subsequent creep testing were performed in an inert atmosphere, helium, to avoid any oxidation of the heating elements, fixtures and specimens. (Testing in an Argon atmosphere suffered from arcing at high temperatures.) An optical pyrometer, (A Honeywell Radiamatic, type R13), was used to control and measure temperature. A linear variable differential transducer, (or LVDT, from Schaevitz Engineering, model number 200DC-D), measured changes in length, whether they be the result of temperature, of applied loads, or of creep. A diagram of the furnace and its features are shown in fig. 5.

Test loads were applied to a specially designed loading beam which pivoted on two knife edges, (see fig. 6 for details). This loading beam, anchored to the base of the furnace shell by a hanging frame, was supported in a manner which prevented any lateral or twisting motions. Its design had several advantages: the test specimens could be loaded without shock via the slow release of the restraining screw which supported the beam; the specimens were also prevented from swinging in the furnace during testing and during load changes so the optical pyrometer's focus could not be disturbed; and the LVDT, because it could be mounted on the beam - and away from the loading axis, made the equipment more accessible, easier to adjust, and more sensitive since beam displacement at the LVDT's location was a magnification of the specimen's elongation.

The declaration that the creep specimens had a knowable gage length is not a trivial pronouncement. To legitimize

this one inch, gage length claim, two important test conditions had to be accounted for: the temperature and the stress distribution. First, the temperature profile of the furnace was approximated as parabolic. Its hot zone, centered on each specimens, test section, was assumed to remain relatively constant in temperature over the length of the test section, (a reasonable approximation according to the temperature distribution analysis done by Feldman, ref.11). Regarding stress, since the cross-sectional area of the specimens' reinforced sections were six times greater than that of their test sections, the stress experienced by the test sections was necessarily six times greater. When one includes a knowledge of the stress exponent, (this value, as determined from our creep results so far, appears to fall in the range of 7 to 8), the assumption that creep was confined to the one inch test section was quite reasonable. Verification came from creep tests performed on specimens without a test section, - i.e., the specimens had a cross section of six yarns along their entire length. These specimens showed no elongation when tested at load and temperature levels which did generate creep in specimens with one bundle test sections.

The creep experiments were performed in the following manner: First, each test specimen was vertically supported in the furnace by two pin and clevis test fixtures which were machined from graphite blocks. This assembly was contained within the furnace, sealed, and then the atmosphere inside the furnace was purged with helium. After the initial purge, a steady helium pressure of approximately two inches of water was maintained for the duration of the test. An initial pre-load of 227 grams was hung from the loading beam and supported by the specimen while the furnace was manually controlled to the desired test temperature. Thermal expansion of the specimen and of the furnace and fixtures was measured by the LVDT during the heating period. When the test temperature was reached, deemed stabilized, and held for approximately 20 mins., the test load was applied - first to the loading beam and then slowly to the specimen by lowering the restraining screw. At this time, ($t=0$ in the graphs), creep began to be recorded as elongation vs. time. Graphitization of the specimen, dependent on both stress and temperature, occurred during

the heat up and the holding; there may have also been a small amount of graphitization after the application of the test load. (Temperature fluctuations during testing were estimated as 1 to 5 C and were quickly corrected manually when they occurred.)

RESULTS AND DISCUSSION

Figure 7 details the results from tests conducted on three different types of specimens: a fully impregnated, mono-yarn specimen as represented by curve 2C; a partially impregnated (MEK treated) specimen as represented by curve 5b; and two 'dry' specimens, curves F3 and F2, which represent specimens whose test sections consisted of a single, matrix free, graphite yarn. These four tests were all performed at the same test temperature of 2310 C (4190 F), and at the same test load of 9072 grams (20 lbs) which is equivalent to a net fiber stress of 770 MPa (112 ksi). The thermal response portion of the curve reflects the simultaneous effects of thermal expansion and graphitization of the specimens, and the thermal expansion of the furnace and fixtures. Likewise, the elastic response portion is the response of the specimens and fixtures to the applied load at $t=0$ hrs. Both of these responses of the four specimens were comparable, hence the representation by single curves.

What are not comparable are the specimens' creep responses. The matrix-free filaments of the 'dry' specimens' test sections stretched and ruptured quickly, showing no steady state behavior at these stress levels. Faring a little better was the partially impregnated specimen, as creep stages were apparent, albeit short-lived, with the strain at rupture approximately an order of magnitude less than its 'dry' counterpart. These results are in marked contrast with the composite specimen 2C. Whereas the 'dry' specimen had already ruptured after elongating approximately 138%, specimen 2C had at the same elapsed time strained only about 1% and was still in its primary creep stage. After 5.9 hours, 2C had elongated by only 3.6% and showed no signs of an impending failure. See table 1 for a numerical summary of the results. It should be noted that the reported 138% rupture strain for specimen F2 is an approximation, (despite the presentation of three significant figures), determined from ruler measurements after the ruptured sections were put 'back together'.

Still, a fraction of the yarn's filaments actually stretched about this amount before finally rupturing.

The above results may run counter to one's general preconception that continuous composites should be less creep resistant than their matrix-free fibers, (eg., see the illustrations of Lilholt, ref.14); especially when one takes into account the fact that the carbon yarn is the principal load bearing phase, (see ref. 4, pg. 164), and that the carbon matrix is quite brittle with many transverse cracks present. Unfortunately, (or fortunately depending on one's perspective), carbon-carbon composites do not readily lend themselves to these type of advance composite generalizations. This is due to the unique, formation properties of the carbon matrix - properties which help to distinguish it from other matrix materials.

This characteristic strengthening of the carbon fibers is attributed to the matrix microstructure of aligned carbonaceous mesophase - ie. the parallel orientation of the 'liquid crystal', graphite basal planes with the filament surfaces during pyrolysis [1]. This alignment creates a 'sheath effect' and, as reported by White and Sheaffer [6,16], this 'sheath effect' is the dominant formation mechanism of the matrix microstructure - being responsible for the interfacial bonding. The proper wetting and alignment of the mesophase during impregnation and carbonization improves the matrix's ability to graphitize and thus has a direct bearing on its ability to distribute forces between fibers (filaments) and, consequently, on the improved use of the composite [17].

Based on the above observations and the results of these creep tests, these microstructural arguments can be extended to the creep-behavior of carbon-carbon composites. The carbon yarn, when left 'dry' as specimens F3 and F2 were, was unable to properly distribute the testing loads thereby leaving individual filaments to creep and rupture haphazardly with the subsequent rapid creep failure of the entire yarn. This could be observed during the actual monitoring of the test as small, but perceptible, discontinuous jumps in elongation occurred in the recording. (This has also been observed by Feldman [11]. It should be

noted that impregnating the carbon yarn does not mean that the applied loads are perfectly distributed between the filaments, as these discontinuous jumps were also observed for the composite specimen - but they were less frequent and smaller.) Thus, stress transfer between the composite's constituents is regarded as an important element of carbon-carbon composite creep resistance.

Examinations of post-creep specimens offer some visual evidence supporting this conclusion. Scanning electron micrographs by Feldman [9], clearly show extensive filament necking in regions exposed by transverse matrix cracks. Our own photographs of post-creep, composite cross-sections, (see fig. 8), show how well-bonded filaments generally experience little or no diametral changes, (though the strains are quite small for these composite specimens anyway). It thus appears that unbonded filaments, exposed via cracks or by stress induced debonding, are much more susceptible to creep; that the matrix of well impregnated and bonded yarn has a cumulative strengthening effect across the specimen's thickness because of better load distribution between the filaments; and that yarn which is only partially impregnated, (curve 5b), is only partially strengthened.

Yet stress transfer may not be the complete story. In addition to the above discussion we propose that this 'carbon sheath' microstructure can also improve the carbon yarn's creep resistance by altering each bonded filament's stress state. The reasoning behind this assertion is fairly straightforward. The carbonaceous mesophase, when firmly layered on the filaments' surfaces, i.e., well-bonded, acts to constrain the transverse strains, thereby imposing a triaxial stress state. With a triaxial stress state filament plastic flow in the axial direction would be delayed until higher stress levels had been reached or debonding had occurred.

A simple analogy can be interjected here by considering a piece of candy - say some taffy - as representative of a carbon yarn filament. If one took a long narrow piece of taffy, heated it, and then pulled on it, it would stretch, neck and rupture without a great deal of effort. Now with another piece of this taffy, give its surface a thin hard

candy coating. Assuming that the properties of this coating do not change at the 'test' temperature, one is now required to pull much harder on this composite candy in order to stretch it since the taffy is now constrained from constricting by its coating. If this coating should suddenly crack during the 'test', a uniaxial stress state would be reintroduced, with necking and rupture again occurring quite readily. With this in mind consider the predicament of the 'dry' specimens. Their filaments, already unevenly loaded because of the absence of matrix, are further burdened by a uniaxial stress state because of the missing 'sheath effect'. It is thus not very surprising that these matrix-free specimens creep and rupture much more quickly than their properly impregnated counterparts.

Finally, there is some preliminary creep data to report as measured from curve 2C. The steady state creep rate is measured as 0.00368 hr^{-1} with a total strain of 3.6% after 5.9 hours of testing. Of special interest from a processing perspective is the data gathered from the primary creep (stage I) portion of curve 2C. Approximately 2.75 hours had elapsed before steady state creep could be considered as the dominant feature. At this time the specimen had already elongated by 2.3% - a large percentage of its total measured elongation. (Indeed, after only one hour the specimen had crept approximately 1.5%.) Other carbon-carbon composite creep investigators do not report observing such a large primary response. The explanation for this could be that the specimens they used could only be tested at low stress levels [7,9,11].

This considerable initial response should be considered if creep is to be used to relax stresses in the yarns of cylindrical weave billets during fabrication. (Maintaining the structural integrity of, say, the radial yarns is desirable because their presence improves the billets survival chances during its fabrication - although a recent analysis by Jortner [18] shows how damaged radials can still act to reduce the risk of billet failure.) In Quan et al. [7], analysis was based on a linear (steady state) creep

responses. In light of the above observations, this analysis should be reworked so that it takes advantage of the large primary creep stage.

CONCLUSION

In an effort to improve the understanding of the thermomechanical behavior of carbon-carbon composites the following was accomplished:

Testing apparatus and specimens were designed which permitted uniaxial creep testing at high temperatures (2310 C) and stress levels (112 ksi) - levels which are comparable to those experienced by carbon-carbon billets during their fabrication.

As a result of processing techniques developed by the authors, substantially dense carbon-carbon specimens with good bonding between matrix and filaments could be obtained in a single impregnation-carbonization-graphitization cycle without the use of an autoclave. This is in contrast to typical billet fabrication techniques which use several high pressure, high temperature, cycles.

During the course of on-going experiments to determine the stress exponent and creep activation energy the following observation was made: that the carbon matrix significantly improves the creep resistance of the carbon fibers. This contradicts the prevalent thought that the creep of fibers should be only slightly influenced by the matrix when the matrix's mechanical properties are inferior to those of the fibers.

This improvement in carbon fiber creep resistance can be attributed to the alignment of the carbonaceous mesophase layers in the matrix. This type of microstructure creates a 'sheath effect' which distributes loads more evenly and which may also impose a triaxial stress state in the filaments, and thus inhibit plastic flow.

The creep response of a composite specimen is noticeable for its rather large primary stage, as compared to its steady state response. The implications involved

here lie with the fabrication of carbon-carbon billets and the proposal that creep be used to relieve the stresses in the radial fibers. Instead of designing time-temperature processing paths on steady state creep predictions, more of the attention should be given to the initial, primary, response.

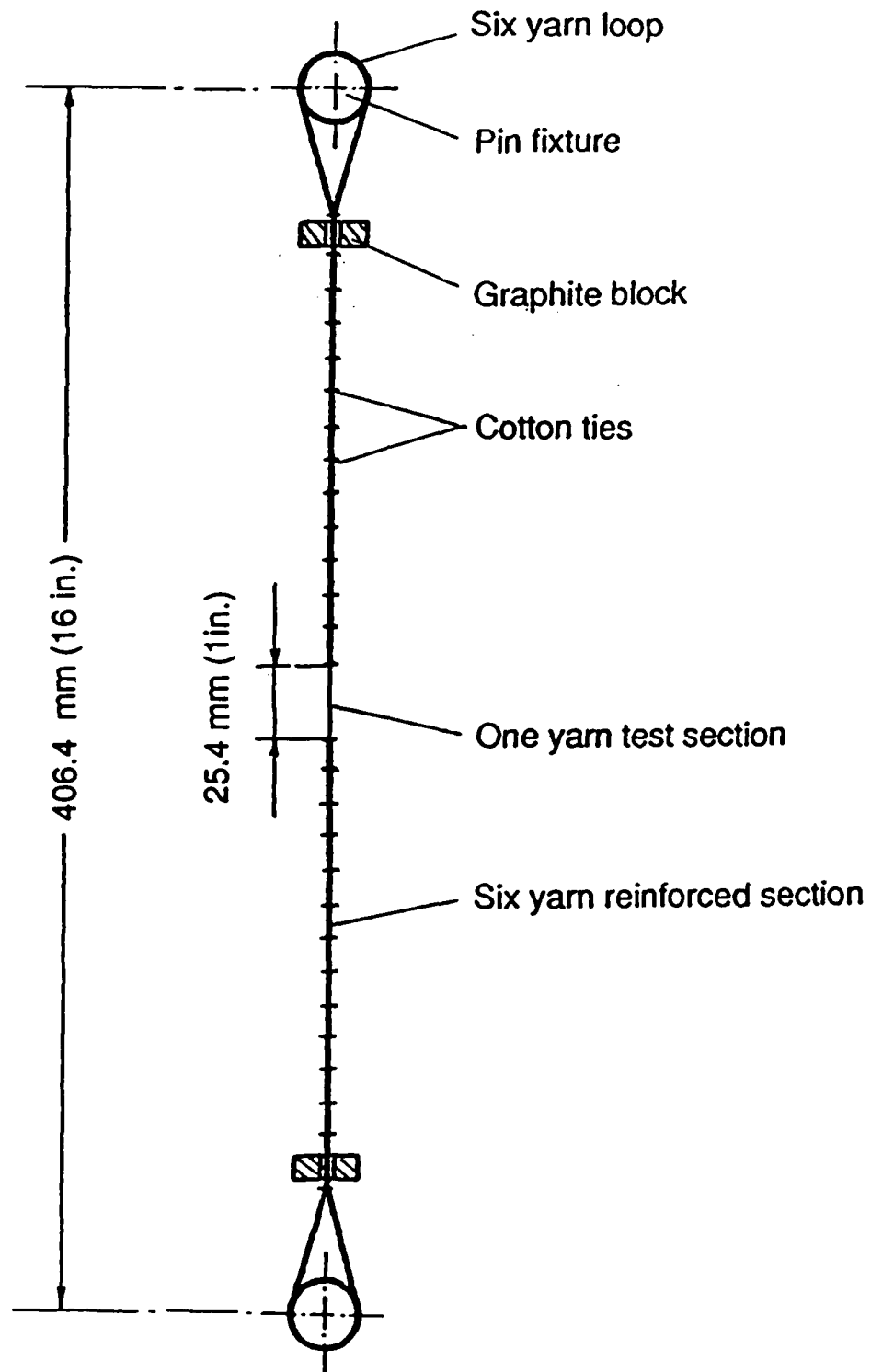


Fig. 1. Diagram of a uniaxial creep specimen. A single carbon yarn makes up the test section and extends the length of the specimen.

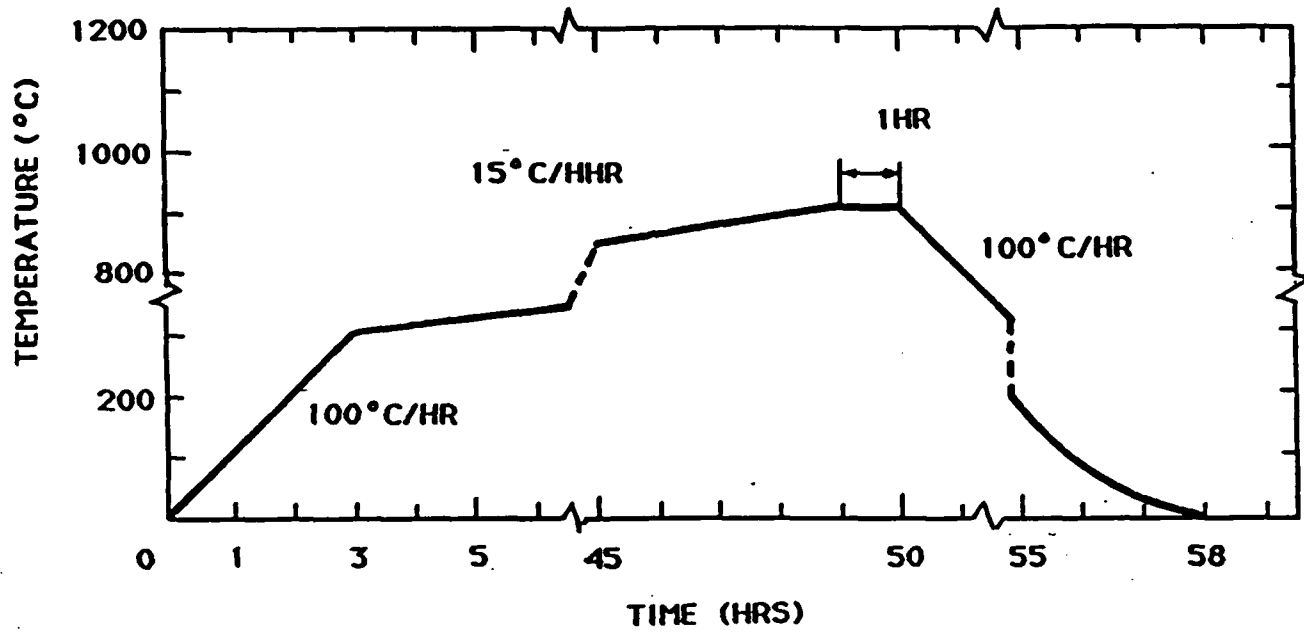
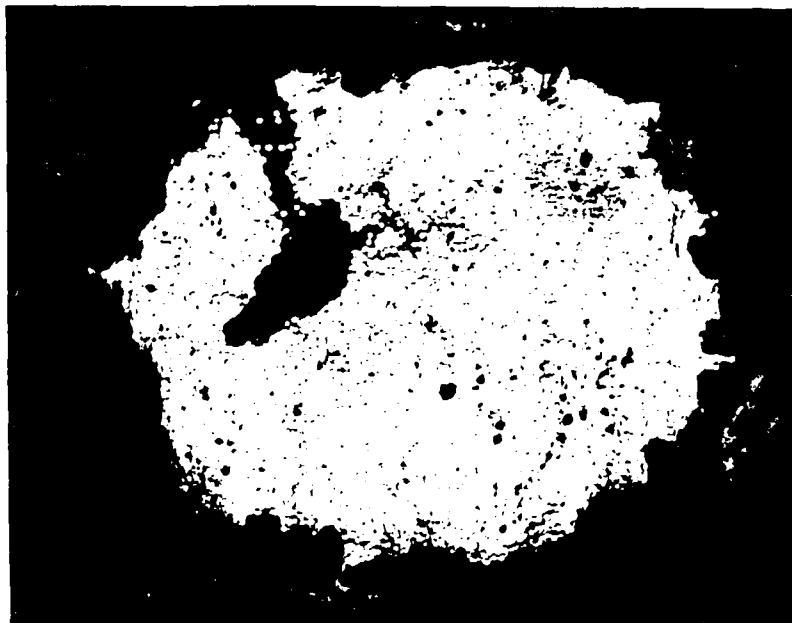


Fig. 2. Heating schedule for the carbonization of the creep specimen .

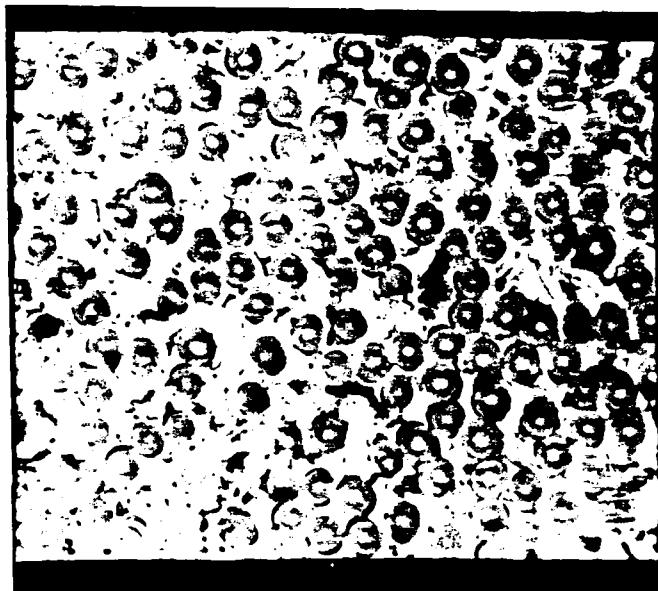


(a)



100um

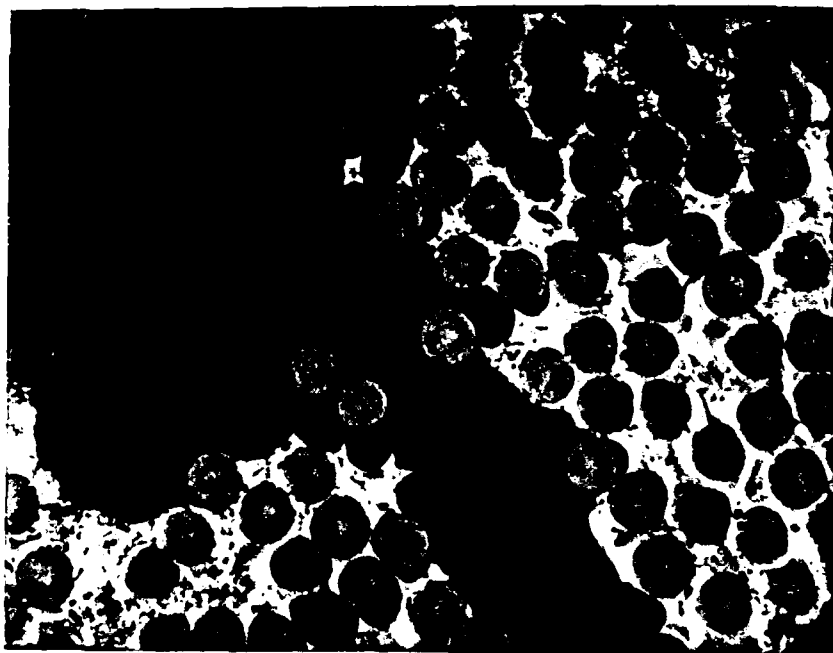
Fig. 3. (a) Photograph (130x) of a cross-section of a carbonized test section. Note the unavoidable bubble pore in the upper left corner. (b) Magnified view (670x) showing the bonded filaments. (c) Magnified view (750x) showing the bonded filaments at the edge of the bubble pore.



(b)



20um



(c)



20um

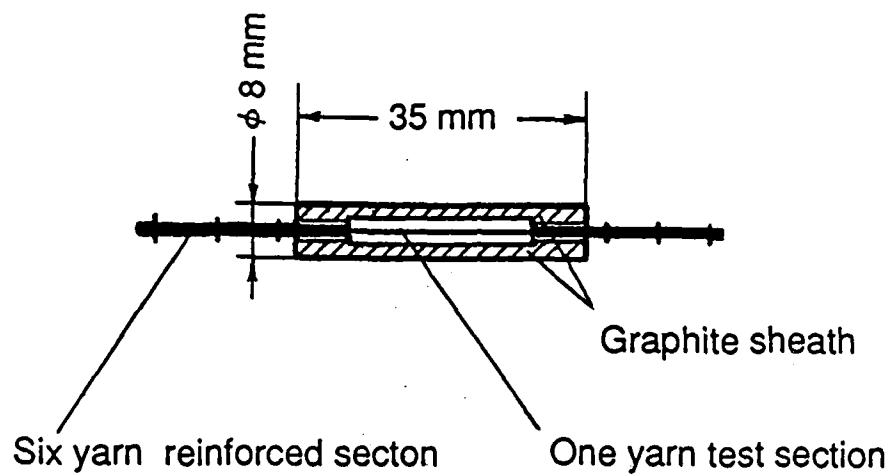


Fig. 4. Diagram of the graphite sheath used to cover the specimen's test section during the impregnation and carbonization of a 'dry' specimen.

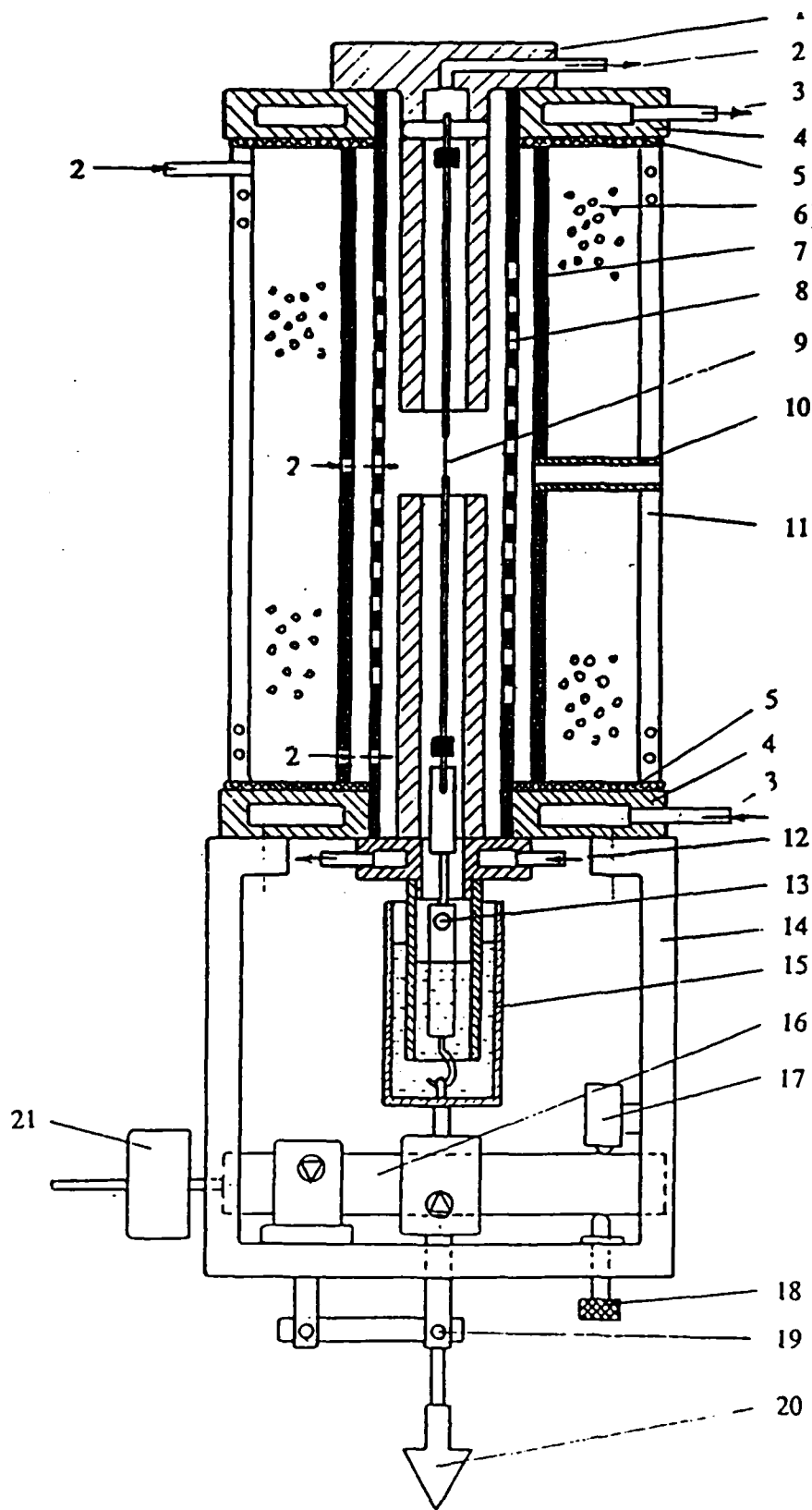


Fig. 5. Diagram of the high temperature furnace and the loading apparatus used for the creep experiments. (See the following page for number identification.)

1. Upper graphite test fixture (with pin to support test specimen)
2. Helium Inlets/outlet
3. Water Coolant Inlet/Outlet and Electrical Power Terminal
4. Upper/Lower Bulkhead Assembly
5. Electrical Insulator
6. Graphite Felt Pad Thermal Insulation
7. Graphite Shield
8. Graphite Heating Element
9. Uniaxial Creep Specimen
10. Window for Optical Pyrometer
11. Outer Furnace Shell (water cooled by internal piping)
12. Lower Water Cooled Jacket
13. Specimen-Rotating Beam Linkage (including universal joint)
14. Loading Frame
15. Water Seal
16. Loading Beam
17. LVDT
18. Screw Support
19. Guide Link
20. Dead Weight Load
21. Counter Balance

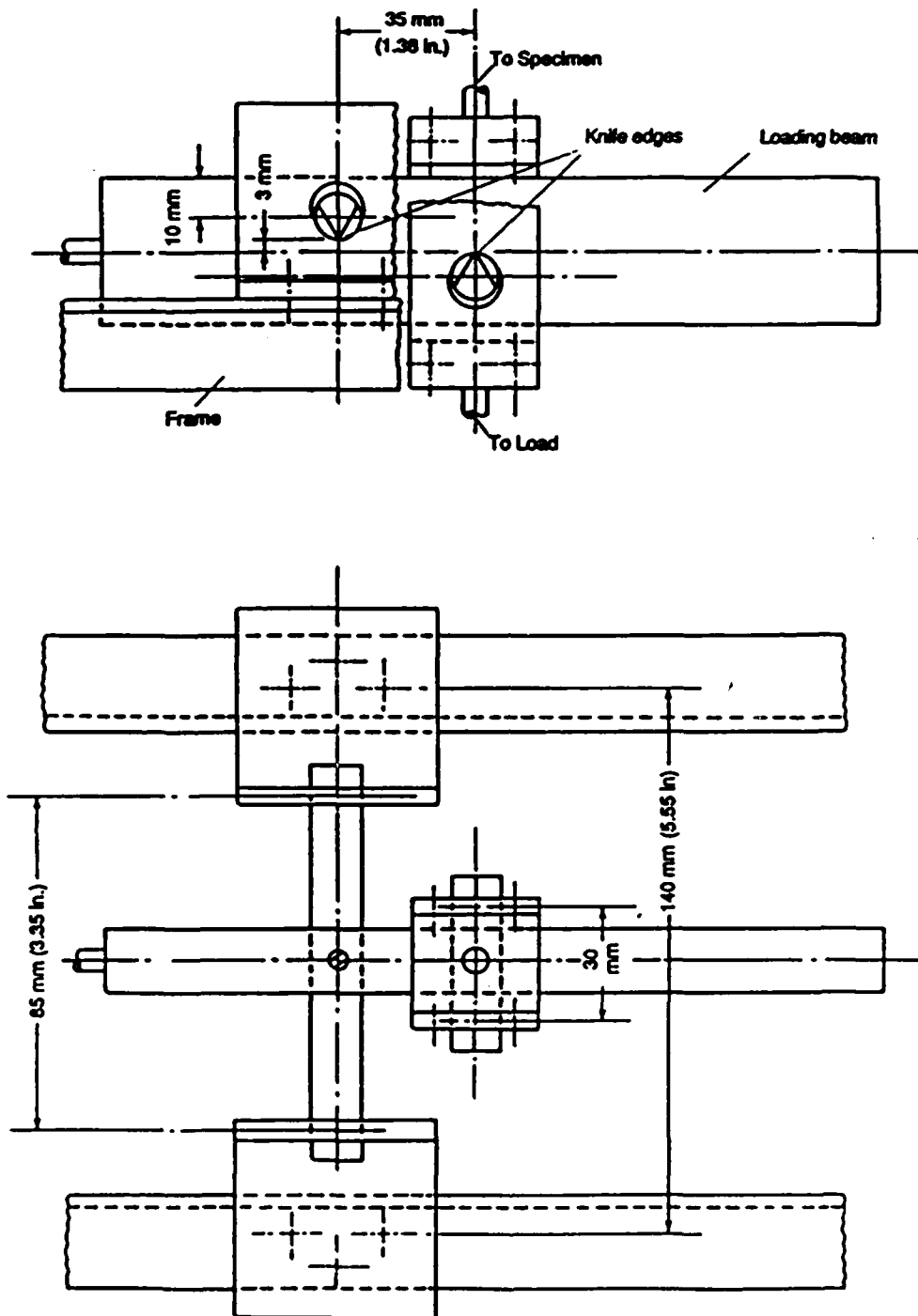


Fig. 6. Diagram showing the details of the loading beam. Knife edges were used to maintain alignment.

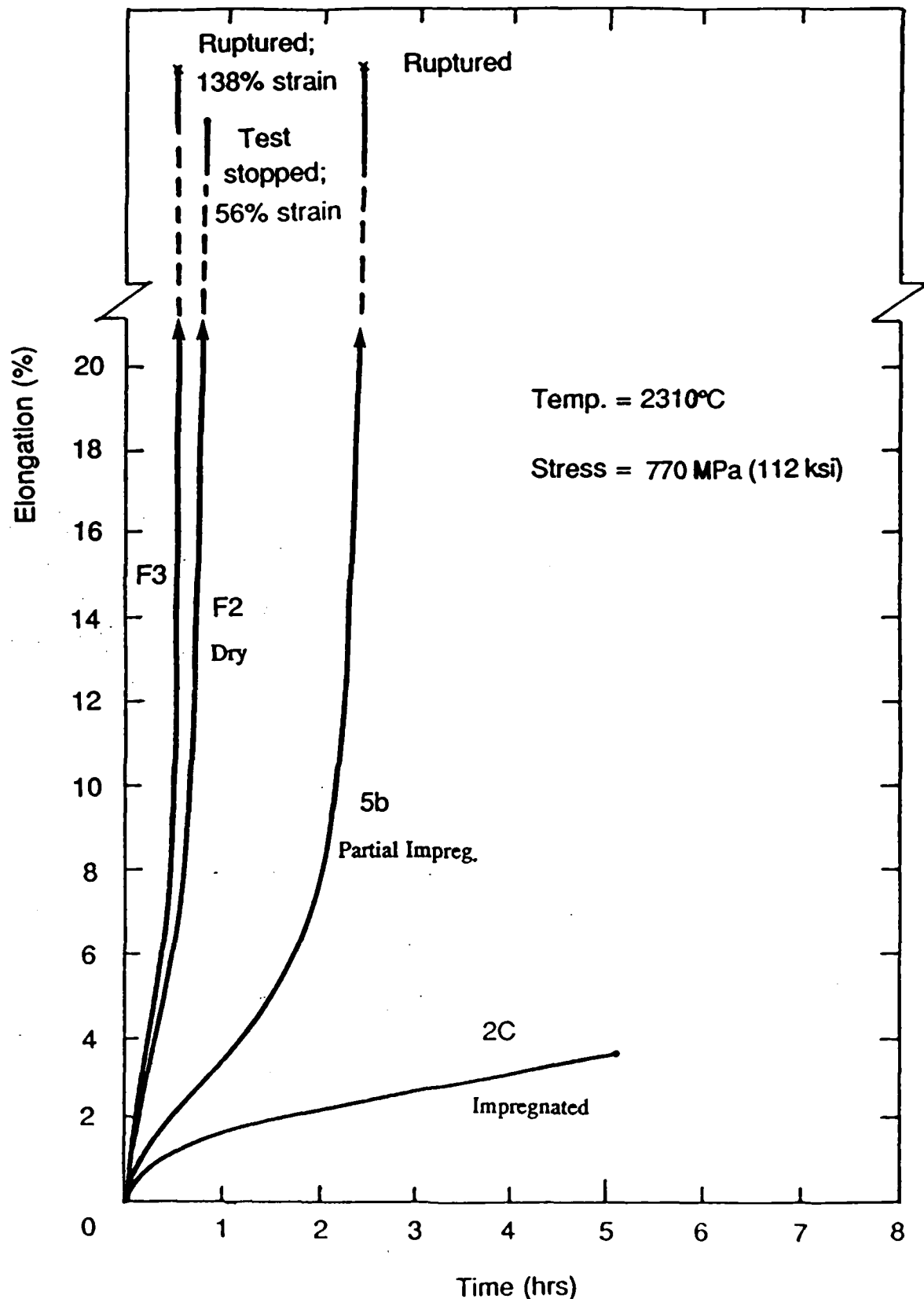
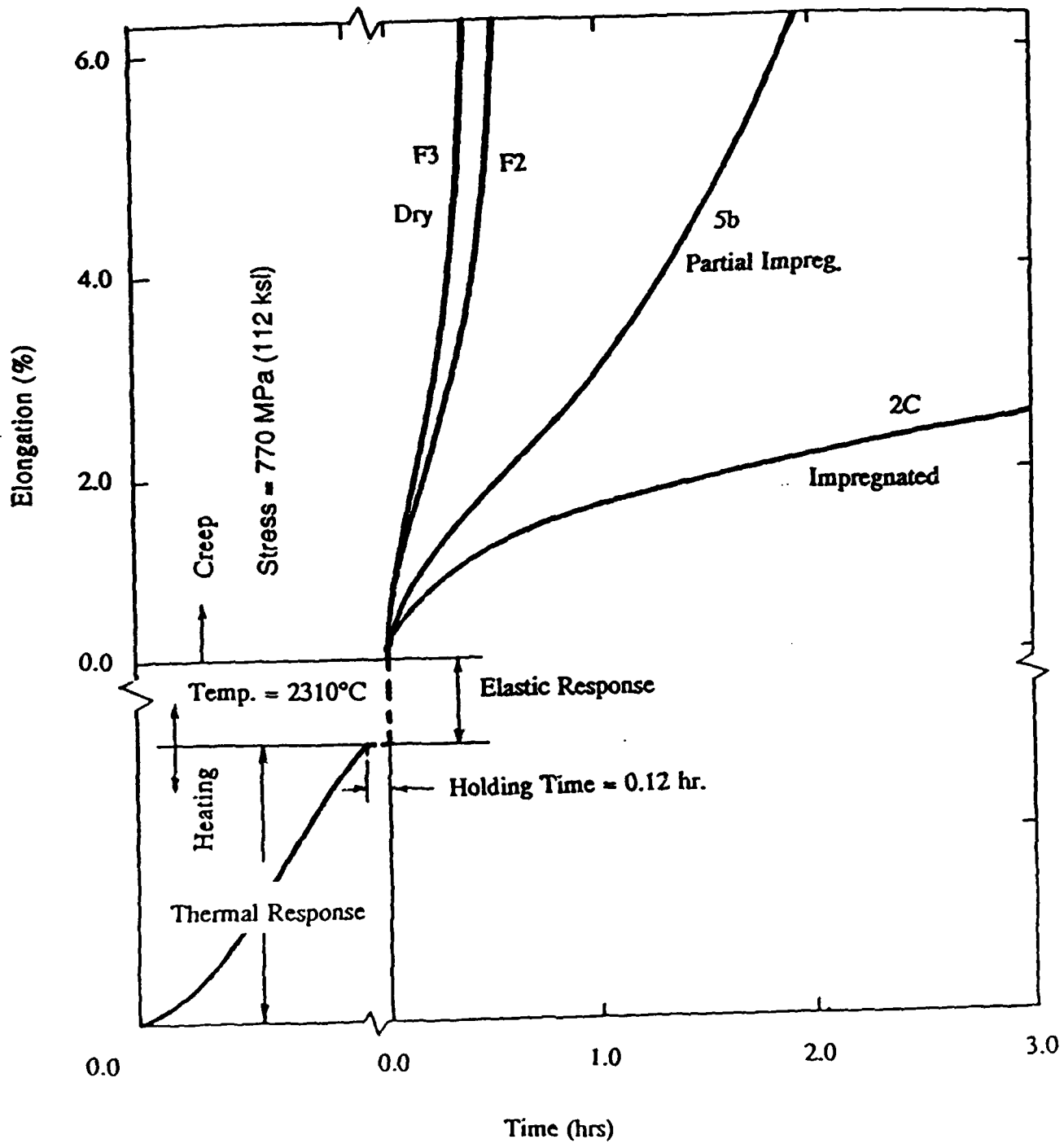
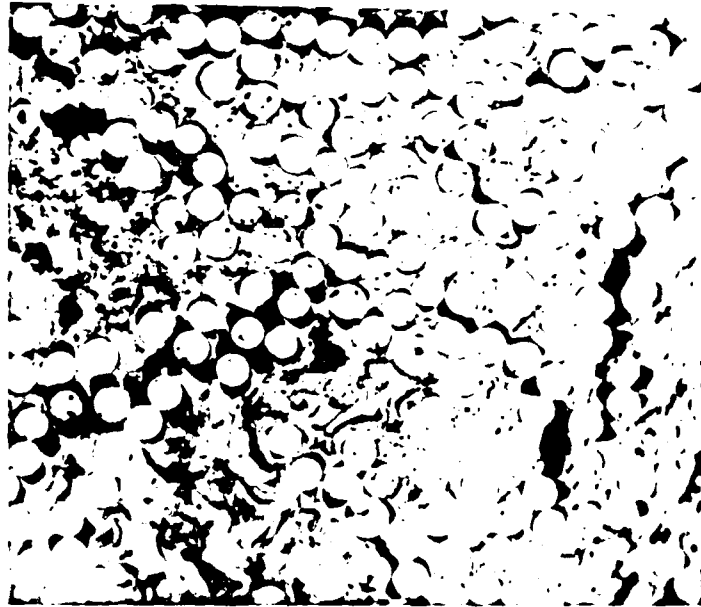


Fig. 7. (a) Elongation vs. Time plot showing the creep responses of the 'dry', partially impregnated, and fully impregnated specimens. (b) Enlarged view (see next page) of the initial responses as well as the pre-creep history of the specimens.



(b)



20um

Fig. 8. Post-creep photograph of the test section of specimen 2C. There appears to be a higher percentage of debonded filaments than in the pre-creep photographs. (670x)

Table 1

Temperature = 2310°C Net Fiber Stress = 770 MPa (112 ksi)

Dry Bundle

Specimen F2: 56% strain when test was stopped after 0.73 hrs.

Specimen F3: 138% strain after 0.39 hrs and after rupture occurred.

Partial Impregnated

Specimen 5b: 18.8% strain after 2.35 hrs before rupture occurred.

Full Impregnated

Specimen 2C: 3.6% strain when test was stopped after 5.9 hrs.

Table 1. Summary of the data from fig. 7.

REFERENCES

1. Evangelides, J.S., Sines, G.H., Batdorf, S.B., "Damage Mechanisms and Modeling of Carbon-Carbon Composites", UCLA-ENG-7975, May. 1, 1981, University of California, Los Angeles, Department of Material Science and Engineering, 150 pages.
2. Sines, G.H., Cohen, B.J., "Stresses During Fabrication of Cylindrically Woven Carbon-Carbon Composites", from Thermomechanical Behavior of High Temperature Composites, ed. Jortner, J., ASME Publication AD-04, 63-76, 1982.
3. Kuhansedgh, B.J., "Fabrication Stresses and Crack Morphology of the Three Dimensional Cylindrically Woven Carbon-Carbon Composites", UCLA Masters Thesis, 1981, University of California, Los Angeles, Department of Material Science and Engineering, 92 pages.
4. Fitzer, E., "The Future of Carbon-Carbon Composites", Carbon, 25, 163-190 (1987).
5. Jortner, J., "Effects of Weak Interfaces on Thermostructural Behavior of Carbon-Carbon Composites", ONR-N0014-82-C-0405, March 31, 1985, Jortner Research and Engineering, Inc, 62 pages.
6. White, J.L., Sheaffer, P.M., "Mesophase Behavior Fundamental to the Processing of Carbon-Carbon Composites", Report No. TR-0084(4728-01)-2, Dec. 1983, The Aerospace Corporation, 44 pages.
7. Quan, D., Sines, G.H., Batdorf, S.B., "The Effects of Radial Yarns - Three-Dimensionally Reinforced Carbon-Carbon Composites", ONR-N0014-77-C-0505, July 1984; University of California, Los Angeles; Department of Material Science and Engineering, 89 pages.
8. Mack, S.D., Sines, G.H., "High Temperature Mechanical Testing of a Cylindrical Weave Carbon-Carbon Composite", ONR-N0014-77-0505, July 1985, University of California, Los Angeles; Department of Material Science and Engineering, 73 pages.
9. Feldman, L.A., "High Temperature Creep Effects in Carbon Yarns and Composites", Report No. TOR-0086A(2728-02)-1, Dec. 5, 1986, The Aerospace Corporation, 12 pages.

10. Feldman, L.A., "High Temperature Creep of Carbon yarns: First Annual Report", Report No. TOR-0083(3728-02)-1, Sept. 5, 1983, The Aerospace Corporation, 23 pages.
11. Feldman, L.A., "High Temperature Creep of Carbon Yarns: Second Annual Report", Report No. TOR-0084A(5728-02)-1, July 15, 1985, The Aerospace Corporation, 85 pages.
12. Pears, C.D., "A Technical Note on Yarn Properties that Relate to Processing", Current Awareness Bulletin, Special Edition, Carbon-Carbon Composite Materials, No. 7, June 25, 1980, Battelle Columbus Laboratories, Southern Research Institute, 18 pages.
13. Kalinkin, Y.A., et al., "Creep in a Carbon-Carbon Material", Translated from Atomnaya Energiya (Soviet Atomic Energy), 53, 268-269, (1982).
14. Lilholt, H., "Creep of Fibrous Composite Materials", Composites Science and Technology, 22, 277-294, (1985).
15. McLean M., "Creep Deformation of a Metal Matrix Composite", Composites Science and Technology, 23, 37-52, (1985).
16. White, J.L., Sheaffer, P.M., "Mesophase Behavior Fundamental to the Processing of Carbon-Carbon Composites", Report No. TOR-0086(6728-01)-3, June 3, 1986, The Aerospace Corporation, 60 pages.
17. Feldman, L.A., Gyetvay, S.R., and Meyer, R.A., "The Influence of Heat Treatment of the Matrix on the Physical Properties of Carbon-Carbon Composites", Report No. TOR-0086(6728-02)-1, May 2, 1986, The Aerospace Corporation, 16 pages.
18. Jortner, J., "Stresses During Heat Treatment of 3D Carbon-Carbon Cylinders", Interim Technical Report to ONR, Contract No. N00014-82-C-0405, in preparation.

DNR DISTRIBUTION (CARBON-CARBON)

02-12-1988 AT 14:46

Page 1

ORGANIZATION	LASTNAME	FIRSTNAME	CITY	STATE	ZIPCODE
	Batdorf	S. B.	Laguna Hills	CA	92653
	White	J. L.	Del Mar	CA	92014
ACUREX/AEROTHERM	Carlson	D. L.	Mountain View	CA	94039
ACUREX/AEROTHERM	Zimmer	J. E.	Mountain View	CA	94039
AEROJET STRATEGIC PROPULSION CO	Suhoza	Jim	Sacramento	CA	95813
AEROJET STRATEGIC PROPULSION COMPANY	Payne	William	Sacramento	CA	95813
AEROSPACE CORPORATION	Feldman	L.	Los Angeles	CA	90009
AEROSPACE CORPORATION	Meyer	Robert A.	Los Angeles	CA	90009
AEROSPACE CORPORATION	Rellick	G. S.	Los Angeles	CA	90009
AEROSPACE CORPORATION	Wolff	Ernest	Los Angeles	CA	90009
AFOSR/NC	Ulrich	D. R.	Bolling AFB	DC	20332
AFWAL/ML	Librarian		Wright-Patterson AFB	OH	45433
AFWAL/MLBC	Abrams	Frances	Wright-Patterson AFB	OH	45433
AFWAL/MLBC	Schmidt	D.	Wright-Patterson AFB	OH	45433
AFWAL/MLBC	Theibert	L. Scott	Wright-Patterson AFB	OH	45433
AFWAL/MLBE	Craig	R. E.	Wright-Patterson AFB	OH	45433
AFWAL/MLBM	Pagano	M. J.	Wright-Patterson AFB	OH	45433
AFWAL/MLLM	Kerans	R.	Wright-Patterson AFB	OH	45433
AIR FORCE ROCKET PROPULSION LABORATORY	Hildreth	J.	Edwards AFB	CA	93523
AIR FORCE ROCKET PROPULSION LABORATORY	Tepe	L.	Edwards AFB	CA	93523
AMMRC	Uhlir	Donald A.	Watertown	MA	02172
AMOCO PERFORMANCE PRODUCTS, INC.	Bacon	Roger	Parma	OH	44130
ARMY MATERIALS & MECHANICS RES. CENTER	Dignan	J.	Watertown	MA	02172
ARMY RESEARCH OFFICE	Meyer	George	Research Triangle Pk	NC	27709
ATLANTIC RESEARCH CORPORATION	Baetz	J.	Alexandria	VA	22314
AVCO Corporation	Laskaris	T.	Lowell	MA	01851
AVCO Corporation	Rolincik	P.	Wilmington	MA	01887
AVCO Systems Division	Taverna	Art	Wilmington	MA	01887
B.F. GOODRICH R&D CENTER	Stover	E.	Brecksville	OH	44191
BATTELLE COLUMBUS LABORATORIES	Jelinek	Frank J.	Columbus	Ohio	43201
BOEING AEROSPACE CO	Nelson	James M.	Seattle	WA	98124
CALIFORNIA RESEARCH & TECHNOLOGY, INC.	Kreyenhagen	K. N.	Chatsworth	CA	91311
CASE WESTERN RESERVE UNIVERSITY	Moet	A.	Cleveland	OH	44106
DCASMA-Santa Ana	Crowe	L. L.	Santa Ana	CA	92712-2700
DEFENSE NUCLEAR AGENCY	Kohler	D.	Washington	DC	20305
DEFENSE TECHNICAL INFORMATION CENTER	*****		Alexandria	VA 22314	22314
DOW CORNING CORPORATION	Hauth	W. E.	Midland	MI	48640
EFFECTS TECHNOLOGY, INC.	Adler	W.	Santa Barbara	CA	93105
EHRENPREIS CONSULTING ENGINEERS	Ehrenpreis	David	Fort Lee	NJ	07024
EXION ENTERPRISES, INC.	Riggs	D.	Fountain Inn	SC	29644
FAILURE ANALYSIS ASSOCIATES	Frankle	Robert	Palo Alto	CA	94303
FIBER MATERIALS, INC.	Burns	Robert L.	Biddeford	ME	04005
FIBER MATERIALS, INC.	Lander	L. L.	Biddeford	ME	04005
SA Technologies	Sheehan	James	San Diego	CA	92138
GENERAL DYNAMICS	Uhl	David	Ft. Worth	TX	76101
GENERAL DYNAMICS COMVAIR	McNamara	Raymond	San Diego	CA	92138
GENERAL ELECTRIC COMPANY	Franke	Robert	Cincinnati	OH	45215
GENERAL ELECTRIC COMPANY	Hall	Kenneth J.	Philadelphia	PA	19101
GENERAL ELECTRIC SPACE DIVISION -RSO	Gebhardt	J.	Philadelphia	PA	19101

ONR DISTRIBUTION (CARBON-CARBON)

02-12-1986 AT 14:46

Page 2

ORGANIZATION	LASTNAME	FIRSTNAME	CITY	STATE	ZIPCODE
HERCULES CORPORATION	Christensen	P.	Magna	UT	84044
HITCO	Dyson	L.	Gardena	CA	90249
HITCO	Fordham	Paul A.	Gardena	CA	90249
IIT Research Institute	Larsen	D. C.	Chicago	Illinois	60610
INSTITUTE FOR DEFENSE ANALYSIS	Kearns	T. F.	Alexandria	VA	22311
JET PROPULSION LABORATORY	Librarian		Pasadena	CA	91103
JORTNER RESEARCH & ENGINEERING, INC.	Jortner	Julius	Costa Mesa	CA	92628
KAISER	Fischer	M.	San Leandro	CA	94577
KAISER AEROTECH	Davis	H. O.	San Leandro	CA	94577
LAWRENCE LIVERMORE LABORATORIES	Maimoni	A.	Livermore	CA	94550
LOCKHEED MISSILES & SPACE CO, INC	Weiler	Frank	Palo Alto	CA	94304-1191
LOCKHEED MISSILES & SPACE COMPANY, INC.	Pinoli	Pat C.	Palo Alto	CA	94304
LOCKHEED MISSILES AND SPACE COMPANY	Osaka	W.	Sunnyvale	CA	94088
LOCKHEED PALO ALTO RESEARCH LAB	Crossman	Frank	PALO Alt	CA	94304
MARTIN MARIETTA AEROSPACE	Koo	F. H.	Orlando	FL	32855
MATERIALS SCIENCES CORPORATION	Kibler	J. J.	Springhouse	PA	19477
MATERIALS SCIENCES CORPORATION	Rosen	B. Walter	Springhouse	PA	19477
MCDONNELL DOUGLAS ASTRONAUTICS CO.	Greszczuk	L. B.	Huntington Beach	CA	92647
MCDONNELL DOUGLAS ASTRONAUTICS CO.	Penton	A. P.	Huntington Beach	CA	92647
MCDONNELL DOUGLAS RESEARCH LABORATORY	Holman	H.	St. Louis	MO	63166
NADC	Barker	William	Warminster	PA	18974
NASA Langley	Houston	R. J.	Langley	VA	23665
NASA Langley	Maahs	Howard	Langley	VA	23665
NASA Langley	Rumler	D.	Langley	VA	23665
NASA Marshall Space Flight Center	Nowakowski	Michael	Huntsville	AL	35812
NASA Marshall Space Flight Center	Powers	B.	Huntsville	AL	35812
NAVAL RESEARCH LABORATORY	Badaliance	Robert	Washington	DC	20375
NAVAL RESEARCH LABORATORY	Director		Washington	DC	20375
NAVAL SEA SYSTEMS COMMAND	Kinna	M.	Washington	DC	20302
NAVAL WEAPONS CENTER	Schwartz	Robert	China Lake	CA	93555
NSWC/WOL	Edwards	R. J.	Silver Spring	MD	20910
NSWC/WOL	Rowe	Charles R.	Silver Spring	MD	20910
NSWC/WOL	Thompson	J.	Silver Spring	MD	20910
OFFICE OF NAVAL RESEARCH	*****		Pasadena	CA	91106
OFFICE OF NAVAL RESEARCH	Diness	A. M.	Arlington	VA	22217
OFFICE OF NAVAL RESEARCH	Kushner	A. S.	Arlington	VA	22217
OFFICE OF NAVAL RESEARCH	Peebles	L. H.	Arlington	VA	22217
OFFICE OF NAVAL RESEARCH	Pohanka	Robert	Arlington	VA	22217
OSD/DOR&E	Persh	J.	Washington	DC	20301
PDA Engineering	Cruse	J. G.	Santa Ana	CA	92705
PDA Engineering	Stanton	E. L.	Santa Ana	CA	92705
PRATT & WHITNEY AIRCRAFT	Miller	Robert L.	West Palm Beach	FL	33402
PRATT & WHITNEY AIRCRAFT	Schmid	Tom	West Palm Beach	FL	33402
PURDUE UNIVERSITY	Sun	C. T.	West Lafayette	IN	47907
RENSELAER POLYTECHNIC INSTITUTE	Diefendorf	R. J.	Troy	NY	12181
ROCKETDYNE DIVISION, ROCKWELL INTERNL	Hawkinson	E. L.	Canoga Park	CA	91304
ROCKWELL INT'L SCIENCE CENTER	Muir	Art	Thousand Oaks	CA	91360
SAMSO/MNMR	Bailey	D.	Norton AFB	CA	92409
SAMSO/MNMR	Brocato	T.	Norton AFB	CA	92409

ORGANIZATION	LASTNAME	FIRSTNAME	CITY	STATE	ZIPCODE
SANDIA LABORATORIES	Northrup	D.	Albuquerque	NM	87185
SCIENCE APPLICATIONS INT'L CORPORATION	Clayton	F. I.	Irvine	CA	92715
SCIENCE APPLICATIONS INT'L CORPORATION	Loomis	Willard	Irvine	CA	92715
SOUTHERN ILLINOIS UNIVERSITY	Wright	Maurice	Carbondale	IL	62901-4303
SOUTHERN RESEARCH INSTITUTE	Koenig	John	Birmingham	AL	35205
SOUTHERN RESEARCH INSTITUTE	Pears	C.	Birmingham	AL	35205
SOUTHERN RESEARCH INSTITUTE	Starrett	H. Stuart	Birmingham	AL	35205
STACKPOLE FIBERS COMPANY, INC.	Fleming	G.	Lowell	MA	01852
STRATEGIC SYSTEMS PROJECT OFFICE (PM-1)	Commander		Washington	DC	20376
SYSTEMS, SCIENCE AND SOFTWARE	Burtman	G.	La Jolla	CA	92037
THIOKOL	Broman	G.	Brigham City	UT	84302
TRW Systems	Kotlensky	Ma.	San Bernardino	CA	92402
U.S. ENERGY RESEARCH DIV. ADMINISTRATION	Littman	A.	Washington	DC	20331
UNION CARBIDE CORPORATION	Bowman	J.	Cleveland	OH	44101
UNION CARBIDE CORPORATION	Taylor	A.	Oak Ridge	TN	37839
UNITED TECHNOLOGIES RESEARCH CENTER	Gallaso	F.	Hartford	CT	06100
UNITED TECHNOLOGIES RESEARCH CENTER	Strife	J. R.	East Hartford	CT	06108
UNITED TECHNOLOGIES-CSD	Ellis	Russ	Sunnyvale	CA	94088
UNIVERSITY OF CALIFORNIA	Sines	George	Los Angeles	CA	90024
UNIVERSITY OF DELAWARE	Chou	Tsu-Wei	Newark	DE	19716
UNIVERSITY OF ILLINOIS AT CHICAGO	Chudnovsky	A.	Chicago	IL	60680
UNIVERSITY OF OKLAHOMA	Bert	C. W.	Norman	Oklahoma	73019
UNIVERSITY OF WASHINGTON	Fischbach	D.	Seattle	WA	98195
UNIVERSITY OF WYOMING	Adams	D. F.	Laramie	WY	82071
VIRGINIA POLYTECHNIC INSTITUTE	Hasselman	D. P. H.	Blacksburg	VA	24061
VIRGINIA POLYTECHNIC INSTITUTE	Jones	Robert M.	Blacksburg	VA	24061
VIRGINIA POLYTECHNIC INSTITUTE &	Reifsnider	K. L.	Blacksburg	VA	24061
VOUGHT CORPORATION	Volk	H.	Dallas	TX	75211
WILLIAMS INTERNATIONAL	Cruzen	Scott	Walled Lake	MI	48088

TOTAL

Printed 127 of the 140 records.

END

DATE

FILMED

DTIC

July 88